



Full wwPDB X-ray Structure Validation Report ⓘ

Mar 8, 2018 – 10:41 pm GMT

PDB ID : 3E6P
Title : Crystal structure of human meizothrombin desF1
Authors : Papaconstantinou, M.E.; Gandhi, P.; Chen, Z.; Bah, A.; Di Cera, E.
Deposited on : 2008-08-15
Resolution : 2.10 Å(reported)

This is a Full wwPDB X-ray Structure Validation Report for a publicly released PDB entry.

We welcome your comments at validation@mail.wwpdb.org

A user guide is available at

<https://www.wwpdb.org/validation/2017/XrayValidationReportHelp>

with specific help available everywhere you see the ⓘ symbol.

The following versions of software and data (see [references ⓘ](#)) were used in the production of this report:

MolProbity : 4.02b-467
Mogul : 1.7.3 (157068), CSD as539be (2018)
Xtriage (Phenix) : 1.13
EDS : trunk30967
Percentile statistics : 20171227.v01 (using entries in the PDB archive December 27th 2017)
Refmac : 5.8.0158
CCP4 : 7.0 (Gargrove)
Ideal geometry (proteins) : Engh & Huber (2001)
Ideal geometry (DNA, RNA) : Parkinson et al. (1996)
Validation Pipeline (wwPDB-VP) : trunk30967

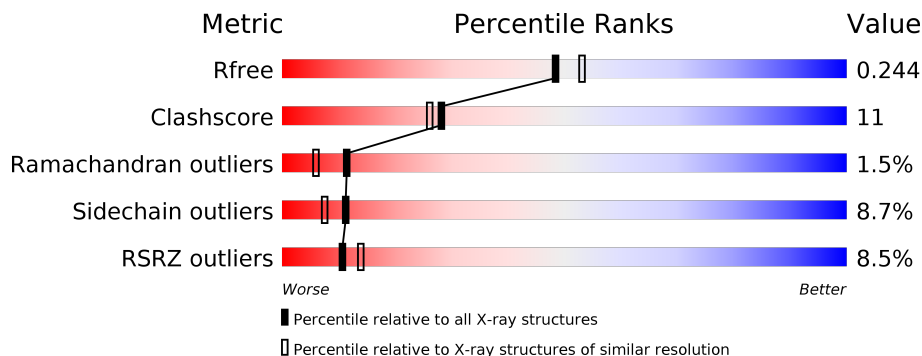
1 Overall quality at a glance

The following experimental techniques were used to determine the structure:

X-RAY DIFFRACTION

The reported resolution of this entry is 2.10 Å.

Percentile scores (ranging between 0-100) for global validation metrics of the entry are shown in the following graphic. The table shows the number of entries on which the scores are based.



Metric	Whole archive (#Entries)	Similar resolution (#Entries, resolution range(Å))
R_{free}	111664	4608 (2.10-2.10)
Clashscore	122126	5109 (2.10-2.10)
Ramachandran outliers	120053	5059 (2.10-2.10)
Sidechain outliers	120020	5060 (2.10-2.10)
RSRZ outliers	108989	4497 (2.10-2.10)

The table below summarises the geometric issues observed across the polymeric chains and their fit to the electron density. The red, orange, yellow and green segments on the lower bar indicate the fraction of residues that contain outliers for ≥ 3 , 2, 1 and 0 types of geometric quality criteria. A grey segment represents the fraction of residues that are not modelled. The numeric value for each fraction is indicated below the corresponding segment, with a dot representing fractions $\leq 5\%$. The upper red bar (where present) indicates the fraction of residues that have poor fit to the electron density. The numeric value is given above the bar.

Mol	Chain	Length	Quality of chain
1	L	158	<div> <div>9%</div> <div> <div></div> <div>66%</div> <div>22%</div> <div>6%</div> <div>5%</div> </div> </div>
2	H	259	<div> <div>6%</div> <div> <div></div> <div>76%</div> <div>19%</div> <div>.</div> <div>.</div> </div> </div>

The following table lists non-polymeric compounds, carbohydrate monomers and non-standard residues in protein, DNA, RNA chains that are outliers for geometric or electron-density-fit criteria:

Mol	Type	Chain	Res	Chirality	Geometry	Clashes	Electron density
6	NAG	H	305	-	-	-	X

2 Entry composition [i](#)

There are 7 unique types of molecules in this entry. The entry contains 3483 atoms, of which 0 are hydrogens and 0 are deuteriums.

In the tables below, the ZeroOcc column contains the number of atoms modelled with zero occupancy, the AltConf column contains the number of residues with at least one atom in alternate conformation and the Trace column contains the number of residues modelled with at most 2 atoms.

- Molecule 1 is a protein called Prothrombin.

Mol	Chain	Residues	Atoms					ZeroOcc	AltConf	Trace
1	L	150	Total	C	N	O	S	285	1	0
			1181	726	200	248	7			

- Molecule 2 is a protein called Prothrombin.

Mol	Chain	Residues	Atoms					ZeroOcc	AltConf	Trace
2	H	251	Total	C	N	O	S	0	0	0
			2030	1295	359	362	14			

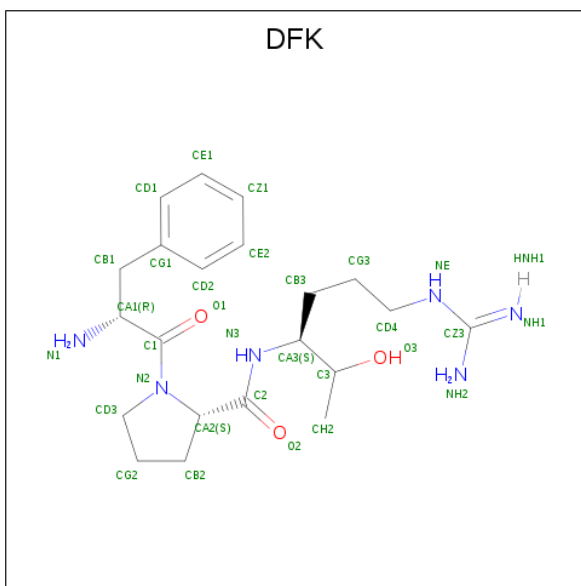
- Molecule 3 is SULFATE ION (three-letter code: SO4) (formula: O₄S).



Mol	Chain	Residues	Atoms			ZeroOcc	AltConf
3	L	1	Total	O	S	0	0
			5	4	1		

- Molecule 4 is D-PHENYLALANYL-N-[(1S)-4-{[(Z)-AMINO(IMINO)METHYL]AMINO}-1-(CHLOROACETYL)BUTYL]-L-PROLINAMIDE (three-letter code: DFK) (formula:

$C_{21}H_{34}N_6O_3$).

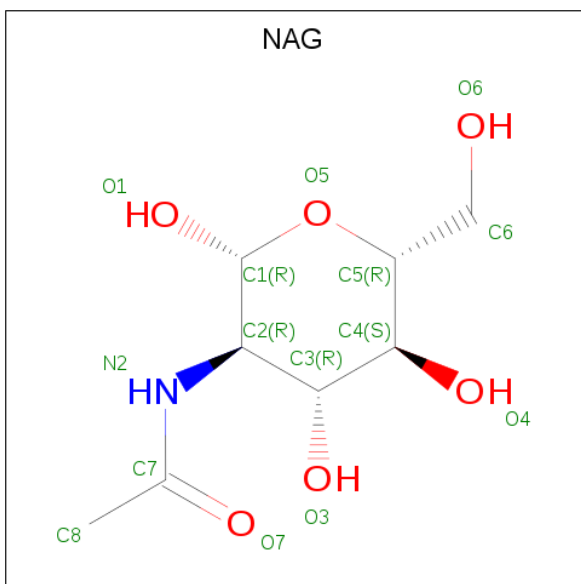


Mol	Chain	Residues	Atoms				ZeroOcc	AltConf
4	H	1	Total	C	N	O	0	0
			30	21	6	3		

- Molecule 5 is SODIUM ION (three-letter code: NA) (formula: Na).

Mol	Chain	Residues	Atoms		ZeroOcc	AltConf
5	H	1	Total	Na	0	0
			1	1		

- Molecule 6 is N-ACETYL-D-GLUCOSAMINE (three-letter code: NAG) (formula: $C_8H_{15}NO_6$).



Mol	Chain	Residues	Atoms				ZeroOcc	AltConf
6	H	1	Total	C	N	O	0	0
			14	8	1	5		
6	H	1	Total	C	N	O	0	0
			14	8	1	5		

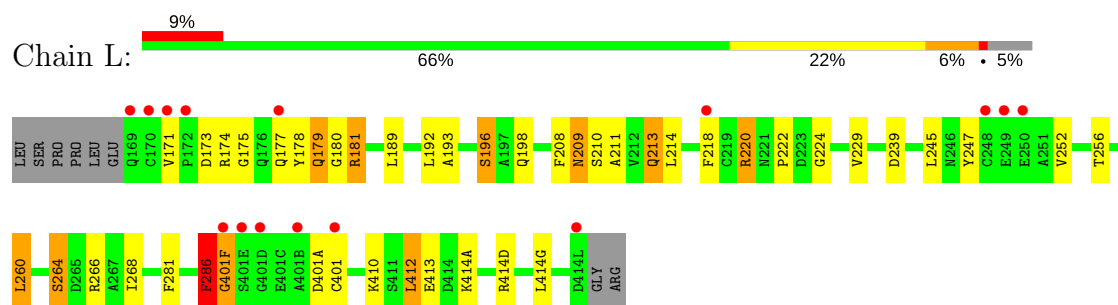
- Molecule 7 is water.

Mol	Chain	Residues	Atoms		ZeroOcc	AltConf
7	L	58	Total	O	0	0
			58	58		
7	H	150	Total	O	0	0
			150	150		

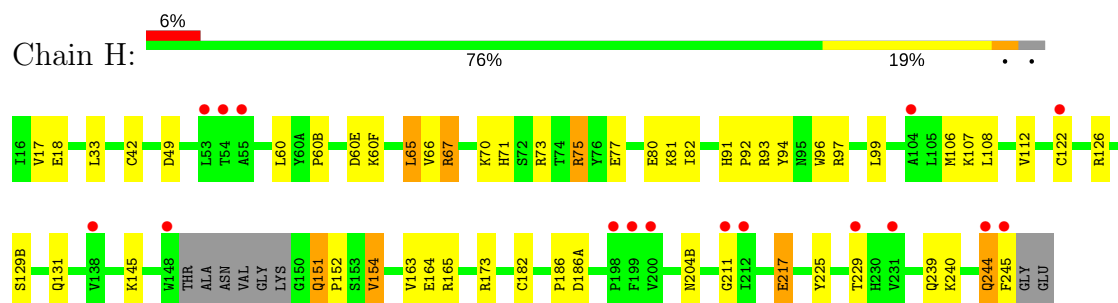
3 Residue-property plots [i](#)

These plots are drawn for all protein, RNA and DNA chains in the entry. The first graphic for a chain summarises the proportions of the various outlier classes displayed in the second graphic. The second graphic shows the sequence view annotated by issues in geometry and electron density. Residues are color-coded according to the number of geometric quality criteria for which they contain at least one outlier: green = 0, yellow = 1, orange = 2 and red = 3 or more. A red dot above a residue indicates a poor fit to the electron density ($RSRZ > 2$). Stretches of 2 or more consecutive residues without any outlier are shown as a green connector. Residues present in the sample, but not in the model, are shown in grey.

• Molecule 1: Prothrombin



• Molecule 2: Prothrombin



4 Data and refinement statistics

Property	Value	Source
Space group	P 41 21 2	Depositor
Cell constants a, b, c, α , β , γ	121.34Å 121.34Å 100.20Å 90.00° 90.00° 90.00°	Depositor
Resolution (Å)	32.58 – 2.10 32.59 – 2.10	Depositor EDS
% Data completeness (in resolution range)	92.2 (32.58-2.10) 92.1 (32.59-2.10)	Depositor EDS
R_{merge}	0.11	Depositor
R_{sym}	(Not available)	Depositor
$\langle I/\sigma(I) \rangle$ ¹	1.84 (at 2.10Å)	Xtriage
Refinement program	REFMAC 5.4.0066	Depositor
R, R_{free}	0.211 , 0.249 0.209 , 0.244	Depositor DCC
R_{free} test set	2026 reflections (5.01%)	wwPDB-VP
Wilson B-factor (Å ²)	38.3	Xtriage
Anisotropy	0.023	Xtriage
Bulk solvent k_{sol} (e/Å ³), B_{sol} (Å ²)	0.36 , 49.5	EDS
L-test for twinning ²	$\langle L \rangle = 0.47$, $\langle L^2 \rangle = 0.30$	Xtriage
Estimated twinning fraction	No twinning to report.	Xtriage
F_o, F_c correlation	0.95	EDS
Total number of atoms	3483	wwPDB-VP
Average B, all atoms (Å ²)	43.0	wwPDB-VP

Xtriage's analysis on translational NCS is as follows: *The largest off-origin peak in the Patterson function is 4.02% of the height of the origin peak. No significant pseudotranslation is detected.*

¹Intensities estimated from amplitudes.

²Theoretical values of $\langle |L| \rangle$, $\langle L^2 \rangle$ for acentric reflections are 0.5, 0.333 respectively for untwinned datasets, and 0.375, 0.2 for perfectly twinned datasets.

5 Model quality

5.1 Standard geometry

Bond lengths and bond angles in the following residue types are not validated in this section: NA, NAG, DFK, SO4

The Z score for a bond length (or angle) is the number of standard deviations the observed value is removed from the expected value. A bond length (or angle) with $|Z| > 5$ is considered an outlier worth inspection. RMSZ is the root-mean-square of all Z scores of the bond lengths (or angles).

Mol	Chain	Bond lengths		Bond angles	
		RMSZ	$\# Z > 5$	RMSZ	$\# Z > 5$
1	L	0.77	1/1205 (0.1%)	0.96	4/1630 (0.2%)
2	H	0.88	1/2082 (0.0%)	0.95	7/2813 (0.2%)
All	All	0.84	2/3287 (0.1%)	0.96	11/4443 (0.2%)

Chiral center outliers are detected by calculating the chiral volume of a chiral center and verifying if the center is modelled as a planar moiety or with the opposite hand. A planarity outlier is detected by checking planarity of atoms in a peptide group, atoms in a mainchain group or atoms of a sidechain that are expected to be planar.

Mol	Chain	#Chirality outliers	#Planarity outliers
1	L	0	2
2	H	0	2
All	All	0	4

All (2) bond length outliers are listed below:

Mol	Chain	Res	Type	Atoms	Z	Observed(Å)	Ideal(Å)
2	H	217	GLU	C-N	14.24	1.58	1.33
1	L	286	PHE	C-N	5.95	1.43	1.33

All (11) bond angle outliers are listed below:

Mol	Chain	Res	Type	Atoms	Z	Observed(°)	Ideal(°)
2	H	217	GLU	O-C-N	-15.01	97.68	123.20
1	L	286	PHE	CA-C-O	-13.29	92.20	120.10
1	L	286	PHE	CB-CA-C	-10.92	88.56	110.40
2	H	67	ARG	NE-CZ-NH1	-10.58	115.01	120.30
1	L	286	PHE	CA-C-N	10.02	136.25	116.20
2	H	75	ARG	NE-CZ-NH2	-6.94	116.83	120.30
2	H	65	LEU	CA-CB-CG	6.63	130.55	115.30

Continued on next page...

Continued from previous page...

Mol	Chain	Res	Type	Atoms	Z	Observed(°)	Ideal(°)
1	L	286	PHE	N-CA-C	-5.90	95.07	111.00
2	H	67	ARG	NE-CZ-NH2	5.65	123.12	120.30
2	H	75	ARG	NE-CZ-NH1	5.33	122.97	120.30
2	H	217	GLU	CA-C-N	5.13	126.46	116.20

There are no chirality outliers.

All (4) planarity outliers are listed below:

Mol	Chain	Res	Type	Group
2	H	217	GLU	Mainchain,Peptide
1	L	286	PHE	Mainchain,Peptide

5.2 Too-close contacts

In the following table, the Non-H and H(model) columns list the number of non-hydrogen atoms and hydrogen atoms in the chain respectively. The H(added) column lists the number of hydrogen atoms added and optimized by MolProbity. The Clashes column lists the number of clashes within the asymmetric unit, whereas Symm-Clashes lists symmetry related clashes.

Mol	Chain	Non-H	H(model)	H(added)	Clashes	Symm-Clashes
1	L	1181	0	1068	30	0
2	H	2030	0	2001	34	0
3	L	5	0	0	0	0
4	H	30	0	30	1	0
5	H	1	0	0	0	0
6	H	28	0	25	2	0
7	H	150	0	0	5	0
7	L	58	0	0	3	0
All	All	3483	0	3124	62	0

The all-atom clashscore is defined as the number of clashes found per 1000 atoms (including hydrogen atoms). The all-atom clashscore for this structure is 11.

All (62) close contacts within the same asymmetric unit are listed below, sorted by their clash magnitude.

Atom-1	Atom-2	Interatomic distance (Å)	Clash overlap (Å)
2:H:173:ARG:HD3	7:H:1144:HOH:O	1.60	1.02
2:H:239:GLN:HG2	7:H:1136:HOH:O	1.71	0.90
1:L:179:GLN:HA	1:L:220:ARG:HH21	1.45	0.81

Continued on next page...

Continued from previous page...

Atom-1	Atom-2	Interatomic distance (Å)	Clash overlap (Å)
2:H:81:LYS:HG2	2:H:112:VAL:HG23	1.64	0.80
1:L:401:CYS:O	2:H:122:CYS:SG	2.40	0.79
1:L:174:ARG:NH1	1:L:224:GLY:O	2.17	0.78
2:H:145:LYS:HE2	7:H:1143:HOH:O	1.83	0.77
1:L:193:ALA:O	1:L:196:SER:HB3	1.85	0.75
2:H:186:PRO:O	2:H:186(A):ASP:HB2	1.89	0.72
2:H:81:LYS:HG2	2:H:112:VAL:CG2	2.19	0.71
1:L:213:GLN:NE2	7:L:1204:HOH:O	2.21	0.68
2:H:75:ARG:NH2	7:H:1061:HOH:O	2.27	0.66
1:L:192:LEU:HD21	1:L:198:GLN:HE21	1.61	0.64
2:H:67:ARG:HD2	2:H:80:GLU:OE1	2.01	0.60
1:L:229:VAL:HG21	1:L:245:LEU:CD1	2.31	0.60
1:L:401:CYS:C	2:H:122:CYS:SG	2.81	0.58
1:L:220:ARG:HH11	1:L:220:ARG:CG	2.17	0.57
1:L:179:GLN:CA	1:L:220:ARG:HH21	2.17	0.56
2:H:186:PRO:O	2:H:186(A):ASP:CB	2.54	0.56
1:L:229:VAL:HG22	1:L:247:TYR:OH	2.06	0.56
2:H:70:LYS:HE2	2:H:77:GLU:OE2	2.06	0.55
1:L:414(G):LEU:CD1	7:L:1138:HOH:O	2.55	0.55
2:H:165:ARG:HD3	7:H:1070:HOH:O	2.07	0.54
1:L:181:ARG:HH11	1:L:181:ARG:HG2	1.73	0.54
2:H:94:TYR:CZ	2:H:96:TRP:HB3	2.43	0.53
2:H:60:LEU:HD11	6:H:304:NAG:H82	1.92	0.52
1:L:229:VAL:CG2	1:L:245:LEU:HD12	2.41	0.51
1:L:414(G):LEU:HD13	7:L:1138:HOH:O	2.11	0.51
6:H:304:NAG:H62	6:H:305:NAG:N2	2.26	0.50
2:H:164:GLU:CD	2:H:164:GLU:H	2.15	0.49
1:L:229:VAL:HG21	1:L:245:LEU:HD11	1.95	0.48
1:L:208:PHE:CD1	1:L:222:PRO:HB2	2.49	0.48
2:H:211:GLY:HA2	2:H:229:THR:O	2.14	0.48
2:H:33:LEU:HD11	2:H:106:MET:CE	2.44	0.47
1:L:410:LYS:HB3	1:L:412:LEU:HD22	1.96	0.47
2:H:60(B):PRO:HG2	2:H:96:TRP:CZ2	2.50	0.47
2:H:73:ARG:HD3	2:H:152:PRO:O	2.15	0.46
1:L:239:ASP:HA	2:H:97:ARG:HH12	1.80	0.46
1:L:178:TYR:CZ	1:L:180:GLY:HA3	2.51	0.46
2:H:73:ARG:CZ	2:H:151:GLN:HB3	2.46	0.45
1:L:218:PHE:HB2	1:L:220:ARG:HH12	1.80	0.45
2:H:65:LEU:HG	2:H:82:ILE:CG2	2.46	0.45
4:H:301:DFK:CD1	4:H:301:DFK:HD32	2.47	0.44
2:H:107:LYS:HE3	2:H:245:PHE:CE1	2.52	0.44

Continued on next page...

Continued from previous page...

Atom-1	Atom-2	Interatomic distance (Å)	Clash overlap (Å)
1:L:171:VAL:CG1	1:L:175:GLY:HA2	2.48	0.43
2:H:17:VAL:HG12	2:H:18:GLU:HG2	2.00	0.43
1:L:209:ASN:HD22	1:L:210:SER:N	2.16	0.43
2:H:240:LYS:O	2:H:244:GLN:HB2	2.18	0.43
2:H:66:VAL:HG21	2:H:108:LEU:HD21	2.01	0.43
1:L:218:PHE:HB2	1:L:220:ARG:NH1	2.34	0.43
1:L:220:ARG:HH11	1:L:220:ARG:HG2	1.83	0.43
2:H:93:ARG:HH11	2:H:93:ARG:HD3	1.63	0.42
2:H:70:LYS:CE	2:H:77:GLU:OE2	2.67	0.42
1:L:181:ARG:NH1	1:L:181:ARG:HG2	2.35	0.41
2:H:163:VAL:HG21	2:H:225:TYR:CD1	2.55	0.41
1:L:220:ARG:CG	1:L:220:ARG:NH1	2.83	0.41
2:H:71:HIS:CD2	2:H:154:VAL:HG22	2.56	0.41
1:L:401(F):GLY:HA3	2:H:49:ASP:OD1	2.21	0.41
1:L:173:ASP:OD2	1:L:177:GLN:NE2	2.46	0.41
2:H:91:HIS:HA	2:H:92:PRO:HD2	1.93	0.41
2:H:65:LEU:HG	2:H:82:ILE:HG23	2.03	0.40
1:L:414(D):ARG:HB2	1:L:414(D):ARG:HE	1.73	0.40

There are no symmetry-related clashes.

5.3 Torsion angles [i](#)

5.3.1 Protein backbone [i](#)

In the following table, the Percentiles column shows the percent Ramachandran outliers of the chain as a percentile score with respect to all X-ray entries followed by that with respect to entries of similar resolution.

The Analysed column shows the number of residues for which the backbone conformation was analysed, and the total number of residues.

Mol	Chain	Analysed	Favoured	Allowed	Outliers	Percentiles	
1	L	149/158 (94%)	118 (79%)	25 (17%)	6 (4%)	3	1
2	H	247/259 (95%)	233 (94%)	14 (6%)	0	100	100
All	All	396/417 (95%)	351 (89%)	39 (10%)	6 (2%)	11	6

All (6) Ramachandran outliers are listed below:

Mol	Chain	Res	Type
1	L	268	ILE
1	L	256	THR
1	L	401(F)	GLY
1	L	211	ALA
1	L	260	LEU
1	L	264	SER

5.3.2 Protein sidechains ⓘ

In the following table, the Percentiles column shows the percent sidechain outliers of the chain as a percentile score with respect to all X-ray entries followed by that with respect to entries of similar resolution.

The Analysed column shows the number of residues for which the sidechain conformation was analysed, and the total number of residues.

Mol	Chain	Analysed	Rotameric	Outliers	Percentiles	
1	L	125/131 (95%)	107 (86%)	18 (14%)	3	1
2	H	219/225 (97%)	207 (94%)	12 (6%)	24	21
All	All	344/356 (97%)	314 (91%)	30 (9%)	11	7

All (30) residues with a non-rotameric sidechain are listed below:

Mol	Chain	Res	Type
1	L	179	GLN
1	L	181	ARG
1	L	189	LEU
1	L	196	SER
1	L	209	ASN
1	L	213	GLN
1	L	214	LEU
1	L	220	ARG
1	L	252	VAL
1	L	260	LEU
1	L	264	SER
1	L	266	ARG
1	L	281	PHE
1	L	286	PHE
1	L	401(A)	ASP
1	L	412	LEU
1	L	413	GLU
1	L	414(A)	LYS

Continued on next page...

Continued from previous page...

Mol	Chain	Res	Type
2	H	42	CYS
2	H	60(E)	ASP
2	H	60(F)	LYS
2	H	99	LEU
2	H	126	ARG
2	H	129(B)	SER
2	H	131	GLN
2	H	151	GLN
2	H	154	VAL
2	H	182	CYS
2	H	204(B)	ASN
2	H	244	GLN

Some sidechains can be flipped to improve hydrogen bonding and reduce clashes. All (5) such sidechains are listed below:

Mol	Chain	Res	Type
1	L	198	GLN
1	L	209	ASN
1	L	213	GLN
2	H	204(B)	ASN
2	H	209	GLN

5.3.3 RNA [i](#)

There are no RNA molecules in this entry.

5.4 Non-standard residues in protein, DNA, RNA chains [i](#)

There are no non-standard protein/DNA/RNA residues in this entry.

5.5 Carbohydrates [i](#)

There are no carbohydrates in this entry.

5.6 Ligand geometry [i](#)

Of 5 ligands modelled in this entry, 1 is monoatomic - leaving 4 for Mogul analysis.

In the following table, the Counts columns list the number of bonds (or angles) for which Mogul statistics could be retrieved, the number of bonds (or angles) that are observed in the model and the number of bonds (or angles) that are defined in the Chemical Component Dictionary. The Link column lists molecule types, if any, to which the group is linked. The Z score for a bond length (or angle) is the number of standard deviations the observed value is removed from the expected value. A bond length (or angle) with $|Z| > 2$ is considered an outlier worth inspection. RMSZ is the root-mean-square of all Z scores of the bond lengths (or angles).

Mol	Type	Chain	Res	Link	Bond lengths			Bond angles		
					Counts	RMSZ	$\# Z > 2$	Counts	RMSZ	$\# Z > 2$
4	DFK	H	301	2	30,31,31	0.63	0	37,41,41	1.16	3 (8%)
6	NAG	H	304	2,6	14,14,15	0.46	0	17,19,21	1.71	1 (5%)
6	NAG	H	305	6	14,14,15	0.73	1 (7%)	17,19,21	1.20	2 (11%)
3	SO4	L	303	-	4,4,4	0.13	0	6,6,6	0.25	0

In the following table, the Chirals column lists the number of chiral outliers, the number of chiral centers analysed, the number of these observed in the model and the number defined in the Chemical Component Dictionary. Similar counts are reported in the Torsion and Rings columns. '-' means no outliers of that kind were identified.

Mol	Type	Chain	Res	Link	Chirals	Torsions	Rings
4	DFK	H	301	2	-	0/31/41/41	0/2/2/2
6	NAG	H	304	2,6	-	0/6/23/26	0/1/1/1
6	NAG	H	305	6	-	0/6/23/26	0/1/1/1
3	SO4	L	303	-	-	0/0/0/0	0/0/0/0

All (1) bond length outliers are listed below:

Mol	Chain	Res	Type	Atoms	Z	Observed(Å)	Ideal(Å)
6	H	305	NAG	C1-C2	2.13	1.55	1.52

All (6) bond angle outliers are listed below:

Mol	Chain	Res	Type	Atoms	Z	Observed(°)	Ideal(°)
4	H	301	DFK	CB3-CA3-N3	-2.77	106.66	110.33
4	H	301	DFK	CB3-CG3-CD4	-2.22	105.27	112.06
6	H	305	NAG	C4-C3-C2	2.27	114.35	111.02
6	H	305	NAG	O5-C5-C6	3.00	111.90	107.15
4	H	301	DFK	CG2-CB2-CA2	3.03	110.42	104.19
6	H	304	NAG	C1-O5-C5	5.88	120.28	112.19

There are no chirality outliers.

There are no torsion outliers.

There are no ring outliers.

3 monomers are involved in 3 short contacts:

Mol	Chain	Res	Type	Clashes	Symm-Clashes
4	H	301	DFK	1	0
6	H	304	NAG	2	0
6	H	305	NAG	1	0

5.7 Other polymers [i](#)

There are no such residues in this entry.

5.8 Polymer linkage issues [i](#)

There are no chain breaks in this entry.

6 Fit of model and data [i](#)

6.1 Protein, DNA and RNA chains [i](#)

In the following table, the column labelled ‘#RSRZ > 2’ contains the number (and percentage) of RSRZ outliers, followed by percent RSRZ outliers for the chain as percentile scores relative to all X-ray entries and entries of similar resolution. The OWAB column contains the minimum, median, 95th percentile and maximum values of the occupancy-weighted average B-factor per residue. The column labelled ‘Q < 0.9’ lists the number of (and percentage) of residues with an average occupancy less than 0.9.

Mol	Chain	Analysed	<RSRZ>	#RSRZ>2	OWAB(Å ²)	Q<0.9
1	L	114/158 (72%)	0.68	15 (13%) 3 4	35, 53, 80, 113	0
2	H	251/259 (96%)	0.28	16 (6%) 19 24	26, 38, 53, 64	0
All	All	365/417 (87%)	0.41	31 (8%) 11 14	26, 42, 65, 113	0

All (31) RSRZ outliers are listed below:

Mol	Chain	Res	Type	RSRZ
2	H	148	TRP	6.4
1	L	250	GLU	5.6
1	L	170	CYS	5.2
1	L	248	CYS	4.8
1	L	169	GLN	4.6
1	L	249	GLU	4.5
1	L	177	GLN	3.9
2	H	122	CYS	3.9
1	L	401(E)	SER	3.7
2	H	212	ILE	3.5
1	L	401(F)	GLY	3.5
2	H	245	PHE	3.3
1	L	414(L)	ASP	3.2
2	H	244	GLN	3.1
1	L	401	CYS	2.9
2	H	211	GLY	2.9
2	H	54	THR	2.8
2	H	53	LEU	2.8
2	H	198	PRO	2.7
2	H	138	VAL	2.6
2	H	199	PHE	2.4
2	H	200	VAL	2.4
2	H	104	ALA	2.4
2	H	229	THR	2.4

Continued on next page...

Continued from previous page...

Mol	Chain	Res	Type	RSRZ
1	L	172	PRO	2.4
2	H	231	VAL	2.4
1	L	218	PHE	2.3
2	H	55	ALA	2.3
1	L	171	VAL	2.2
1	L	401(D)	GLY	2.2
1	L	401(B)	ALA	2.1

6.2 Non-standard residues in protein, DNA, RNA chains [i](#)

There are no non-standard protein/DNA/RNA residues in this entry.

6.3 Carbohydrates [i](#)

There are no carbohydrates in this entry.

6.4 Ligands [i](#)

In the following table, the Atoms column lists the number of modelled atoms in the group and the number defined in the chemical component dictionary. The B-factors column lists the minimum, median, 95th percentile and maximum values of B factors of atoms in the group. The column labelled 'Q< 0.9' lists the number of atoms with occupancy less than 0.9.

Mol	Type	Chain	Res	Atoms	RSCC	RSR	B-factors(Å ²)	Q<0.9
6	NAG	H	305	14/15	0.70	0.52	100,104,106,107	0
6	NAG	H	304	14/15	0.79	0.21	75,80,86,95	0
3	SO4	L	303	5/5	0.91	0.13	92,92,93,94	0
4	DFK	H	301	30/30	0.98	0.10	27,32,35,38	0
5	NA	H	302	1/1	0.98	0.04	36,36,36,36	0

6.5 Other polymers [i](#)

There are no such residues in this entry.