



Full wwPDB X-ray Structure Validation Report ⓘ

Mar 9, 2018 – 10:25 am GMT

PDB ID : 1E7U
Title : Structure determinants of phosphoinositide 3-kinase inhibition by wortmannin, LY294002, quercetin, myricetin and staurosporine
Authors : Walker, E.H.; Perisic, O.; Ried, C.; Stephens, L.; Williams, R.L.
Deposited on : 2000-09-08
Resolution : 2.00 Å(reported)

This is a Full wwPDB X-ray Structure Validation Report for a publicly released PDB entry.

We welcome your comments at validation@mail.wwpdb.org

A user guide is available at

<https://www.wwpdb.org/validation/2017/XrayValidationReportHelp>

with specific help available everywhere you see the ⓘ symbol.

The following versions of software and data (see [references ⓘ](#)) were used in the production of this report:

MolProbity : 4.02b-467
Mogul : 1.7.3 (157068), CSD as539be (2018)
Xtriage (Phenix) : 1.13
EDS : trunk30967
Percentile statistics : 20171227.v01 (using entries in the PDB archive December 27th 2017)
Refmac : 5.8.0158
CCP4 : 7.0 (Gargrove)
Ideal geometry (proteins) : Engh & Huber (2001)
Ideal geometry (DNA, RNA) : Parkinson et al. (1996)
Validation Pipeline (wwPDB-VP) : trunk30967

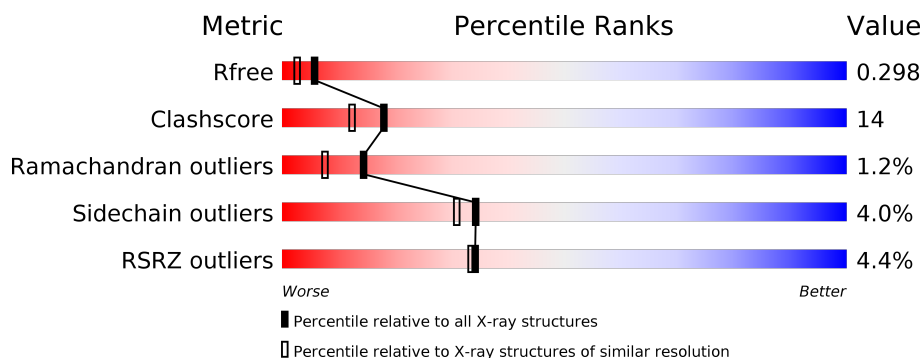
1 Overall quality at a glance

The following experimental techniques were used to determine the structure:

X-RAY DIFFRACTION

The reported resolution of this entry is 2.00 Å.

Percentile scores (ranging between 0-100) for global validation metrics of the entry are shown in the following graphic. The table shows the number of entries on which the scores are based.



Metric	Whole archive (#Entries)	Similar resolution (#Entries, resolution range(Å))
R_{free}	111664	7193 (2.00-2.00)
Clashscore	122126	8267 (2.00-2.00)
Ramachandran outliers	120053	8166 (2.00-2.00)
Sidechain outliers	120020	8165 (2.00-2.00)
RSRZ outliers	108989	7011 (2.00-2.00)

The table below summarises the geometric issues observed across the polymeric chains and their fit to the electron density. The red, orange, yellow and green segments on the lower bar indicate the fraction of residues that contain outliers for ≥ 3 , 2, 1 and 0 types of geometric quality criteria. A grey segment represents the fraction of residues that are not modelled. The numeric value for each fraction is indicated below the corresponding segment, with a dot representing fractions $\leq 5\%$. The upper red bar (where present) indicates the fraction of residues that have poor fit to the electron density. The numeric value is given above the bar.

Mol	Chain	Length	Quality of chain
1	A	961	<div> <div>4%</div> <div>63%</div> <div>25%</div> <div>•</div> <div>9%</div> </div>

2 Entry composition [i](#)

There are 3 unique types of molecules in this entry. The entry contains 7249 atoms, of which 0 are hydrogens and 0 are deuteriums.

In the tables below, the ZeroOcc column contains the number of atoms modelled with zero occupancy, the AltConf column contains the number of residues with at least one atom in alternate conformation and the Trace column contains the number of residues modelled with at most 2 atoms.

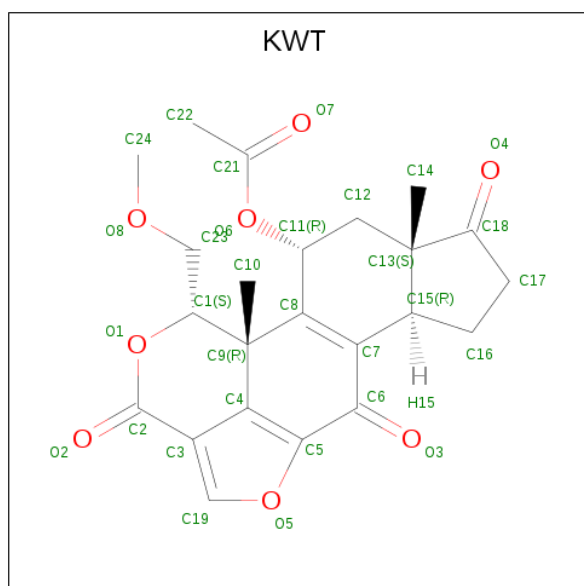
- Molecule 1 is a protein called PHOSPHATIDYLINOSITOL 3-KINASE CATALYTIC SUB-UNIT.

Mol	Chain	Residues	Atoms					ZeroOcc	AltConf	Trace
			Total	C	N	O	S			
1	A	872	7054	4530	1205	1282	37	0	0	0

There are 2 discrepancies between the modelled and reference sequences:

Chain	Residue	Modelled	Actual	Comment	Reference
A	143	ALA	PRO	expression tag	UNP O02697
A	505	ALA	ARG	conflict	UNP O02697

- Molecule 2 is (1S,6BR,9AS,11R,11BR)-9A,11B-DIMETHYL-1-[(METHYLOXY)METHYL]-3,6,9-TRIOXO-1,6,6B,7,8,9,9A,10,11,11B-DECAHYDRO-3H-FURO[4,3,2-DE]INDENO[4,5-H][2]BENZOPYRAN-11-YL ACETATE (three-letter code: KWT) (formula: C₂₃H₂₄O₈).



Mol	Chain	Residues	Atoms			ZeroOcc	AltConf
			Total	C	O		
2	A	1	31	23	8	0	0

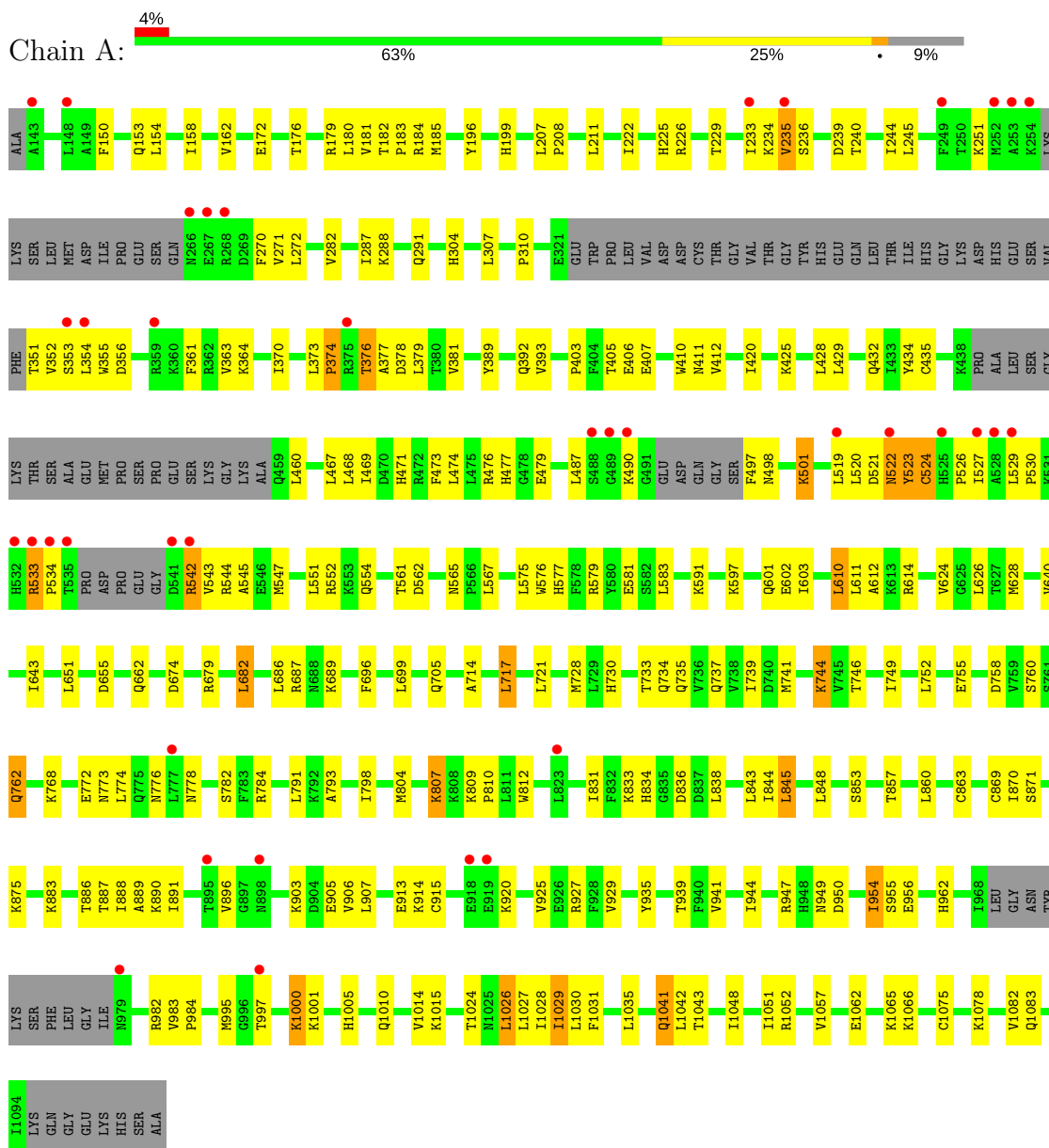
- Molecule 3 is water.

Mol	Chain	Residues	Atoms		ZeroOcc	AltConf
3	A	164	Total 164	O 164	0	0

3 Residue-property plots

These plots are drawn for all protein, RNA and DNA chains in the entry. The first graphic for a chain summarises the proportions of the various outlier classes displayed in the second graphic. The second graphic shows the sequence view annotated by issues in geometry and electron density. Residues are color-coded according to the number of geometric quality criteria for which they contain at least one outlier: green = 0, yellow = 1, orange = 2 and red = 3 or more. A red dot above a residue indicates a poor fit to the electron density ($RSRZ > 2$). Stretches of 2 or more consecutive residues without any outlier are shown as a green connector. Residues present in the sample, but not in the model, are shown in grey.

• Molecule 1: PHOSPHATIDYLINOSITOL 3-KINASE CATALYTIC SUBUNIT



4 Data and refinement statistics

Property	Value	Source
Space group	C 1 2 1	Depositor
Cell constants a, b, c, α , β , γ	145.33Å 67.66Å 106.65Å 90.00° 95.05° 90.00°	Depositor
Resolution (Å)	72.38 – 2.00 72.38 – 1.98	Depositor EDS
% Data completeness (in resolution range)	94.3 (72.38-2.00) 95.7 (72.38-1.98)	Depositor EDS
R_{merge}	0.08	Depositor
R_{sym}	(Not available)	Depositor
$\langle I/\sigma(I) \rangle$ ¹	1.49 (at 1.98Å)	Xtriage
Refinement program	CNS 1.0	Depositor
R, R_{free}	0.254 , 0.298 0.253 , 0.298	Depositor DCC
R_{free} test set	2711 reflections (3.95%)	wwPDB-VP
Wilson B-factor (Å ²)	40.6	Xtriage
Anisotropy	0.114	Xtriage
Bulk solvent k_{sol} (e/Å ³), B_{sol} (Å ²)	0.34 , 42.4	EDS
L-test for twinning ²	$\langle L \rangle = 0.48$, $\langle L^2 \rangle = 0.31$	Xtriage
Estimated twinning fraction	No twinning to report.	Xtriage
F_o, F_c correlation	0.94	EDS
Total number of atoms	7249	wwPDB-VP
Average B, all atoms (Å ²)	49.0	wwPDB-VP

Xtriage's analysis on translational NCS is as follows: *The largest off-origin peak in the Patterson function is 5.55% of the height of the origin peak. No significant pseudotranslation is detected.*

¹Intensities estimated from amplitudes.

²Theoretical values of $\langle |L| \rangle$, $\langle L^2 \rangle$ for acentric reflections are 0.5, 0.333 respectively for untwinned datasets, and 0.375, 0.2 for perfectly twinned datasets.

5 Model quality [i](#)

5.1 Standard geometry [i](#)

Bond lengths and bond angles in the following residue types are not validated in this section: KWT

The Z score for a bond length (or angle) is the number of standard deviations the observed value is removed from the expected value. A bond length (or angle) with $|Z| > 5$ is considered an outlier worth inspection. RMSZ is the root-mean-square of all Z scores of the bond lengths (or angles).

Mol	Chain	Bond lengths		Bond angles	
		RMSZ	$\# Z > 5$	RMSZ	$\# Z > 5$
1	A	0.38	0/7202	0.58	0/9742

Chiral center outliers are detected by calculating the chiral volume of a chiral center and verifying if the center is modelled as a planar moiety or with the opposite hand. A planarity outlier is detected by checking planarity of atoms in a peptide group, atoms in a mainchain group or atoms of a sidechain that are expected to be planar.

Mol	Chain	#Chirality outliers	#Planarity outliers
1	A	0	1

There are no bond length outliers.

There are no bond angle outliers.

There are no chirality outliers.

All (1) planarity outliers are listed below:

Mol	Chain	Res	Type	Group
1	A	523	TYR	Sidechain

5.2 Too-close contacts [i](#)

In the following table, the Non-H and H(model) columns list the number of non-hydrogen atoms and hydrogen atoms in the chain respectively. The H(added) column lists the number of hydrogen atoms added and optimized by MolProbity. The Clashes column lists the number of clashes within the asymmetric unit, whereas Symm-Clashes lists symmetry related clashes.

Mol	Chain	Non-H	H(model)	H(added)	Clashes	Symm-Clashes
1	A	7054	0	7126	206	0
2	A	31	0	23	0	0

Continued on next page...

Continued from previous page...

Mol	Chain	Non-H	H(model)	H(added)	Clashes	Symm-Clashes
3	A	164	0	0	7	0
All	All	7249	0	7149	206	0

The all-atom clashscore is defined as the number of clashes found per 1000 atoms (including hydrogen atoms). The all-atom clashscore for this structure is 14.

All (206) close contacts within the same asymmetric unit are listed below, sorted by their clash magnitude.

Atom-1	Atom-2	Interatomic distance (Å)	Clash overlap (Å)
1:A:833:LYS:HD3	1:A:838:LEU:HD21	1.38	1.05
1:A:760:SER:HB2	1:A:762:GLN:HE21	1.39	0.88
1:A:1035:LEU:HD12	1:A:1048:ILE:HD13	1.55	0.88
1:A:949:ASN:H	1:A:1083:GLN:HE22	1.23	0.83
1:A:833:LYS:CD	1:A:838:LEU:HD21	2.10	0.80
1:A:497:PHE:HB3	1:A:1042:LEU:HB3	1.62	0.79
1:A:744:LYS:HB2	1:A:744:LYS:NZ	1.99	0.77
1:A:196:TYR:OH	1:A:728:MET:HE3	1.84	0.77
1:A:226:ARG:HB3	1:A:229:THR:HB	1.65	0.77
1:A:772:GLU:HG2	1:A:798:ILE:HD13	1.67	0.76
1:A:351:THR:HG22	1:A:352:VAL:HG23	1.68	0.75
1:A:689:LYS:HG2	1:A:728:MET:CE	2.18	0.73
1:A:207:LEU:HD11	1:A:288:LYS:HD2	1.70	0.72
1:A:425:LYS:HA	1:A:469:ILE:HD12	1.72	0.72
1:A:352:VAL:HG13	1:A:527:ILE:HD12	1.71	0.72
1:A:154:LEU:O	1:A:158:ILE:HG12	1.92	0.70
1:A:576:TRP:O	1:A:579:ARG:HG3	1.91	0.70
1:A:1048:ILE:O	1:A:1051:ILE:HG22	1.94	0.67
1:A:403:PRO:HG2	3:A:2029:HOH:O	1.96	0.65
1:A:949:ASN:N	1:A:1083:GLN:HE22	1.94	0.65
1:A:583:LEU:HD13	1:A:610:LEU:HD22	1.79	0.65
1:A:804:MET:HE1	1:A:812:TRP:HE3	1.61	0.64
1:A:1024:THR:O	1:A:1028:ILE:HG12	1.97	0.64
1:A:432:GLN:HB3	1:A:460:LEU:CD1	2.27	0.64
1:A:208:PRO:HD2	1:A:211:LEU:HD12	1.79	0.64
1:A:1010:GLN:O	1:A:1014:VAL:HG23	1.98	0.63
1:A:611:LEU:O	1:A:614:ARG:HG3	1.98	0.63
1:A:807:LYS:HD2	1:A:807:LYS:H	1.63	0.63
1:A:768:LYS:O	1:A:772:GLU:HG3	1.98	0.63
1:A:271:VAL:HB	1:A:310:PRO:HG3	1.80	0.63
1:A:887:THR:HG21	1:A:950:ASP:OD1	1.99	0.62
1:A:567:LEU:HD21	1:A:591:LYS:HD2	1.82	0.62

Continued on next page...

Continued from previous page...

Atom-1	Atom-2	Interatomic distance (Å)	Clash overlap (Å)
1:A:689:LYS:HG2	1:A:728:MET:HE1	1.79	0.62
1:A:733:THR:HG22	1:A:737:GLN:HE21	1.65	0.61
1:A:353:SER:HB3	1:A:526:PRO:HA	1.81	0.61
1:A:689:LYS:HG2	1:A:728:MET:HE2	1.83	0.61
1:A:602:GLU:H	1:A:602:GLU:CD	2.04	0.60
1:A:640:VAL:O	1:A:643:ILE:HG12	2.01	0.60
1:A:844:ILE:O	1:A:848:LEU:HD13	2.00	0.60
1:A:949:ASN:HB2	1:A:1083:GLN:NE2	2.17	0.60
1:A:158:ILE:HD11	1:A:721:LEU:HD12	1.84	0.60
1:A:235:VAL:HG11	1:A:244:ILE:CD1	2.32	0.60
1:A:591:LYS:HG2	3:A:2055:HOH:O	2.02	0.60
1:A:354:LEU:HB3	1:A:529:LEU:HD11	1.84	0.59
1:A:432:GLN:HB3	1:A:460:LEU:HD11	1.85	0.58
1:A:983:VAL:CG2	1:A:984:PRO:HD2	2.34	0.58
1:A:601:GLN:HG3	1:A:602:GLU:N	2.17	0.57
1:A:947:ARG:HH21	1:A:962:HIS:HB3	1.69	0.57
1:A:196:TYR:OH	1:A:728:MET:CE	2.52	0.57
1:A:887:THR:HG22	1:A:889:ALA:H	1.68	0.57
1:A:689:LYS:HE2	1:A:728:MET:HE2	1.85	0.57
1:A:687:ARG:HH11	1:A:687:ARG:HG3	1.70	0.57
1:A:755:GLU:HG2	1:A:807:LYS:O	2.04	0.57
1:A:235:VAL:HG12	1:A:239:ASP:OD2	2.05	0.57
1:A:351:THR:N	1:A:524:CYS:HB3	2.20	0.57
1:A:746:THR:HA	1:A:752:LEU:HD12	1.87	0.57
1:A:240:THR:O	1:A:244:ILE:HG12	2.06	0.56
1:A:1041:GLN:H	1:A:1041:GLN:NE2	2.03	0.56
1:A:891:ILE:HG22	1:A:906:VAL:HG12	1.87	0.56
1:A:744:LYS:HB2	1:A:744:LYS:HZ2	1.70	0.56
1:A:915:CYS:SG	1:A:920:LYS:HE2	2.46	0.56
1:A:181:VAL:HG12	1:A:185:MET:CE	2.37	0.55
1:A:760:SER:OG	1:A:762:GLN:HG2	2.07	0.55
1:A:887:THR:HG22	1:A:889:ALA:N	2.21	0.54
1:A:845:LEU:HD23	1:A:869:CYS:HB3	1.90	0.54
1:A:561:THR:HG21	1:A:565:ASN:ND2	2.23	0.54
1:A:158:ILE:CD1	1:A:717:LEU:HD13	2.38	0.54
1:A:807:LYS:H	1:A:807:LYS:CD	2.20	0.54
1:A:474:LEU:CD2	1:A:527:ILE:HG12	2.38	0.54
1:A:182:THR:HB	1:A:183:PRO:HD3	1.90	0.54
1:A:542:ARG:HD3	1:A:544:ARG:HH21	1.73	0.53
1:A:1000:LYS:HE3	1:A:1000:LYS:HA	1.89	0.53
1:A:804:MET:CE	1:A:812:TRP:HE3	2.21	0.53

Continued on next page...

Continued from previous page...

Atom-1	Atom-2	Interatomic distance (Å)	Clash overlap (Å)
1:A:741:MET:HE3	1:A:774:LEU:HD22	1.91	0.53
1:A:158:ILE:HD12	1:A:717:LEU:HB3	1.90	0.53
1:A:804:MET:HB3	1:A:810:PRO:HD2	1.90	0.53
1:A:245:LEU:HD21	1:A:272:LEU:HG	1.92	0.52
1:A:730:HIS:O	1:A:734:GLN:HG2	2.08	0.52
1:A:939:THR:HG21	3:A:2153:HOH:O	2.09	0.52
1:A:533:ARG:HG2	1:A:612:ALA:HB2	1.92	0.52
1:A:501:LYS:HZ2	1:A:501:LYS:HB3	1.73	0.52
1:A:887:THR:HB	1:A:890:LYS:HG3	1.92	0.52
1:A:914:LYS:HD2	1:A:956:GLU:HG2	1.91	0.52
1:A:158:ILE:HD13	1:A:717:LEU:HD13	1.92	0.51
1:A:903:LYS:HB2	1:A:906:VAL:HG23	1.92	0.51
1:A:1026:LEU:O	1:A:1029:ILE:HG22	2.10	0.51
1:A:1035:LEU:HB3	1:A:1043:THR:HG21	1.93	0.51
1:A:983:VAL:HG22	1:A:984:PRO:HD2	1.93	0.51
1:A:361:PHE:HB2	1:A:420:ILE:HD13	1.93	0.51
1:A:361:PHE:HA	1:A:420:ILE:HD11	1.93	0.51
1:A:1029:ILE:O	1:A:1029:ILE:HD13	2.11	0.51
1:A:809:LYS:N	1:A:810:PRO:HD3	2.26	0.51
1:A:744:LYS:HB2	1:A:744:LYS:HZ3	1.74	0.50
1:A:364:LYS:HE2	1:A:411:ASN:OD1	2.12	0.50
1:A:1052:ARG:HH11	1:A:1052:ARG:HG2	1.75	0.50
1:A:903:LYS:HB2	1:A:906:VAL:CG2	2.42	0.50
1:A:597:LYS:HB2	1:A:603:ILE:HD12	1.93	0.49
1:A:379:LEU:HD13	1:A:435:CYS:SG	2.53	0.49
1:A:239:ASP:O	1:A:287:ILE:HG23	2.13	0.49
1:A:886:THR:HG22	1:A:887:THR:H	1.77	0.49
1:A:579:ARG:HB3	1:A:610:LEU:HD11	1.93	0.49
1:A:271:VAL:HG23	1:A:282:VAL:CG1	2.43	0.49
1:A:887:THR:HB	1:A:890:LYS:CG	2.42	0.49
1:A:853:SER:O	1:A:857:THR:HG23	2.12	0.48
1:A:354:LEU:HD22	1:A:529:LEU:HD21	1.96	0.48
1:A:235:VAL:HG11	1:A:244:ILE:HD13	1.95	0.48
1:A:150:PHE:HA	1:A:153:GLN:HE21	1.78	0.48
1:A:662:GLN:HE21	1:A:1030:LEU:HD22	1.77	0.48
1:A:995:MET:O	1:A:1005:HIS:HB2	2.14	0.48
1:A:741:MET:O	1:A:744:LYS:HG2	2.14	0.48
1:A:651:LEU:HD22	1:A:655:ASP:HB3	1.96	0.48
1:A:176:THR:HG23	1:A:674:ASP:HB2	1.96	0.47
1:A:1041:GLN:H	1:A:1041:GLN:CD	2.17	0.47
1:A:467:LEU:O	1:A:476:ARG:HD2	2.14	0.47

Continued on next page...

Continued from previous page...

Atom-1	Atom-2	Interatomic distance (Å)	Clash overlap (Å)
1:A:547:MET:HE2	1:A:551:LEU:HB3	1.96	0.47
1:A:180:LEU:C	1:A:183:PRO:HD2	2.35	0.47
1:A:699:LEU:HB2	1:A:717:LEU:HG	1.96	0.47
1:A:179:ARG:NH2	1:A:679:ARG:HH22	2.13	0.47
1:A:925:VAL:O	1:A:929:VAL:HG23	2.15	0.47
1:A:162:VAL:HG12	1:A:714:ALA:HB1	1.97	0.47
1:A:935:TYR:O	1:A:939:THR:HG22	2.15	0.47
1:A:497:PHE:HB3	1:A:1042:LEU:HD22	1.96	0.47
1:A:479:GLU:HG2	1:A:519:LEU:HD13	1.96	0.46
1:A:410:TRP:O	1:A:412:VAL:HG23	2.15	0.46
1:A:1062:GLU:O	1:A:1066:LYS:HD3	2.15	0.46
1:A:181:VAL:HG12	1:A:185:MET:HE1	1.96	0.46
1:A:728:MET:HE1	3:A:2107:HOH:O	2.13	0.46
1:A:997:THR:HG23	1:A:1001:LYS:O	2.16	0.46
1:A:363:VAL:HG23	1:A:520:LEU:HD12	1.98	0.46
1:A:735:GLN:O	1:A:739:ILE:HD12	2.16	0.45
1:A:271:VAL:HG23	1:A:282:VAL:HG11	1.98	0.45
1:A:812:TRP:HA	1:A:831:ILE:HD13	1.98	0.45
1:A:429:LEU:HB2	1:A:468:LEU:HD21	1.98	0.45
1:A:863:CYS:HB3	1:A:927:ARG:HH11	1.80	0.45
1:A:225:HIS:NE2	1:A:304:HIS:HD2	2.15	0.45
1:A:888:ILE:HB	1:A:949:ASN:OD1	2.17	0.45
1:A:1052:ARG:HG3	1:A:1057:VAL:HG21	1.99	0.45
1:A:405:THR:HG23	1:A:407:GLU:O	2.17	0.45
1:A:749:ILE:CG2	1:A:752:LEU:HG	2.48	0.44
1:A:773:ASN:HA	1:A:776:ASN:ND2	2.31	0.44
1:A:773:ASN:HA	1:A:776:ASN:HD22	1.83	0.44
1:A:158:ILE:CD1	1:A:721:LEU:HD12	2.47	0.44
1:A:1014:VAL:HG11	1:A:1065:LYS:HG3	2.00	0.44
1:A:982:ARG:O	1:A:1078:LYS:HE2	2.18	0.44
1:A:545:ALA:HA	1:A:581:GLU:OE1	2.17	0.44
1:A:1052:ARG:O	1:A:1057:VAL:HG23	2.18	0.44
1:A:233:ILE:N	1:A:233:ILE:HD12	2.33	0.44
1:A:393:VAL:O	1:A:393:VAL:HG23	2.18	0.44
1:A:954:ILE:HD13	1:A:955:SER:N	2.32	0.44
1:A:477:HIS:HB2	1:A:521:ASP:O	2.19	0.43
1:A:583:LEU:HD13	1:A:610:LEU:CD2	2.45	0.43
1:A:941:VAL:O	1:A:1051:ILE:HD12	2.19	0.43
1:A:860:LEU:HD21	1:A:1015:LYS:HE2	2.01	0.43
1:A:744:LYS:NZ	1:A:744:LYS:CB	2.78	0.43
1:A:887:THR:CG2	1:A:950:ASP:HA	2.49	0.43

Continued on next page...

Continued from previous page...

Atom-1	Atom-2	Interatomic distance (Å)	Clash overlap (Å)
1:A:474:LEU:HD23	1:A:527:ILE:HG12	1.99	0.43
1:A:886:THR:HG22	1:A:887:THR:N	2.34	0.43
1:A:1035:LEU:HD12	1:A:1048:ILE:CD1	2.38	0.43
1:A:199:HIS:HB3	3:A:2014:HOH:O	2.19	0.42
1:A:233:ILE:HG22	1:A:234:LYS:N	2.34	0.42
1:A:477:HIS:HD2	1:A:522:ASN:ND2	2.17	0.42
1:A:1028:ILE:HD12	1:A:1051:ILE:HG23	2.02	0.42
1:A:544:ARG:HD2	1:A:577:HIS:O	2.19	0.42
1:A:291:GLN:OE1	1:A:291:GLN:HA	2.18	0.42
1:A:389:TYR:O	1:A:392:GLN:HG2	2.19	0.42
1:A:575:LEU:HD21	1:A:591:LYS:HB3	2.00	0.42
1:A:696:PHE:HA	1:A:717:LEU:HD21	2.01	0.42
1:A:772:GLU:HG2	1:A:798:ILE:CD1	2.43	0.42
1:A:809:LYS:O	1:A:834:HIS:HE1	2.02	0.42
1:A:370:ILE:O	1:A:370:ILE:HG23	2.20	0.42
1:A:782:SER:HA	1:A:793:ALA:O	2.20	0.42
1:A:381:VAL:HA	1:A:434:TYR:O	2.19	0.42
1:A:547:MET:HE1	1:A:552:ARG:HA	2.02	0.42
1:A:705:GLN:NE2	1:A:875:LYS:H	2.17	0.42
1:A:784:ARG:HH11	1:A:784:ARG:HG2	1.85	0.42
1:A:1014:VAL:CG1	1:A:1065:LYS:HG3	2.50	0.42
1:A:1031:PHE:CE2	1:A:1035:LEU:HD11	2.55	0.42
1:A:682:LEU:HD22	1:A:686:LEU:HD12	2.01	0.42
1:A:184:ARG:HD3	3:A:2009:HOH:O	2.19	0.41
1:A:804:MET:CE	1:A:812:TRP:HB2	2.50	0.41
1:A:222:ILE:O	1:A:222:ILE:HG13	2.20	0.41
1:A:497:PHE:O	1:A:498:ASN:HB3	2.20	0.41
1:A:354:LEU:HD22	1:A:529:LEU:HD11	2.03	0.41
1:A:373:LEU:HD23	1:A:406:GLU:N	2.35	0.41
1:A:376:THR:O	1:A:378:ASP:N	2.53	0.41
1:A:624:VAL:O	1:A:628:MET:HG2	2.20	0.41
1:A:949:ASN:H	1:A:1083:GLN:NE2	2.03	0.41
1:A:235:VAL:HG11	1:A:244:ILE:HD12	2.03	0.41
1:A:543:VAL:O	1:A:544:ARG:C	2.59	0.41
1:A:983:VAL:CG2	1:A:1075:CYS:SG	3.09	0.41
1:A:554:GLN:HA	1:A:554:GLN:NE2	2.36	0.41
1:A:597:LYS:HB2	1:A:603:ILE:CD1	2.51	0.41
1:A:172:GLU:HG3	1:A:471:HIS:CG	2.56	0.41
1:A:235:VAL:HG12	1:A:236:SER:H	1.86	0.41
1:A:1082:VAL:HB	3:A:2163:HOH:O	2.21	0.41
1:A:498:ASN:ND2	1:A:1042:LEU:HD23	2.36	0.40

Continued on next page...

Continued from previous page...

Atom-1	Atom-2	Interatomic distance (Å)	Clash overlap (Å)
1:A:562:ASP:OD2	1:A:1052:ARG:HD3	2.22	0.40
1:A:939:THR:OG1	1:A:944:ILE:HG13	2.20	0.40
1:A:428:LEU:HD23	1:A:467:LEU:HA	2.03	0.40
1:A:762:GLN:H	1:A:762:GLN:CD	2.23	0.40
1:A:181:VAL:HG12	1:A:185:MET:HE2	2.04	0.40
1:A:270:PHE:CD2	1:A:307:LEU:HG	2.57	0.40
1:A:381:VAL:HG12	1:A:434:TYR:O	2.22	0.40
1:A:529:LEU:HA	1:A:530:PRO:HD3	1.96	0.40
1:A:870:ILE:HG22	1:A:871:SER:O	2.22	0.40
1:A:425:LYS:HE3	1:A:473:PHE:CZ	2.56	0.40

There are no symmetry-related clashes.

5.3 Torsion angles [i](#)

5.3.1 Protein backbone [i](#)

In the following table, the Percentiles column shows the percent Ramachandran outliers of the chain as a percentile score with respect to all X-ray entries followed by that with respect to entries of similar resolution.

The Analysed column shows the number of residues for which the backbone conformation was analysed, and the total number of residues.

Mol	Chain	Analysed	Favoured	Allowed	Outliers	Percentiles
1	A	858/961 (89%)	799 (93%)	49 (6%)	10 (1%)	14 7

All (10) Ramachandran outliers are listed below:

Mol	Chain	Res	Type
1	A	377	ALA
1	A	524	CYS
1	A	534	PRO
1	A	542	ARG
1	A	251	LYS
1	A	778	ASN
1	A	896	VAL
1	A	374	PRO
1	A	490	LYS
1	A	376	THR

5.3.2 Protein sidechains ⓘ

In the following table, the Percentiles column shows the percent sidechain outliers of the chain as a percentile score with respect to all X-ray entries followed by that with respect to entries of similar resolution.

The Analysed column shows the number of residues for which the sidechain conformation was analysed, and the total number of residues.

Mol	Chain	Analysed	Rotameric	Outliers	Percentiles	
1	A	782/857 (91%)	751 (96%)	31 (4%)	34	31

All (31) residues with a non-rotameric sidechain are listed below:

Mol	Chain	Res	Type
1	A	235	VAL
1	A	355	TRP
1	A	356	ASP
1	A	374	PRO
1	A	487	LEU
1	A	501	LYS
1	A	522	ASN
1	A	523	TYR
1	A	533	ARG
1	A	610	LEU
1	A	626	LEU
1	A	682	LEU
1	A	717	LEU
1	A	744	LYS
1	A	758	ASP
1	A	762	GLN
1	A	791	LEU
1	A	807	LYS
1	A	836	ASP
1	A	843	LEU
1	A	845	LEU
1	A	883	LYS
1	A	905	GLU
1	A	907	LEU
1	A	913	GLU
1	A	954	ILE
1	A	1000	LYS
1	A	1026	LEU
1	A	1027	LEU
1	A	1029	ILE

Continued on next page...

Continued from previous page...

Mol	Chain	Res	Type
1	A	1041	GLN

Some sidechains can be flipped to improve hydrogen bonding and reduce clashes. All (27) such sidechains are listed below:

Mol	Chain	Res	Type
1	A	153	GLN
1	A	169	HIS
1	A	199	HIS
1	A	218	ASN
1	A	299	ASN
1	A	304	HIS
1	A	391	GLN
1	A	459	GLN
1	A	477	HIS
1	A	483	HIS
1	A	522	ASN
1	A	554	GLN
1	A	565	ASN
1	A	601	GLN
1	A	658	HIS
1	A	705	GLN
1	A	737	GLN
1	A	762	GLN
1	A	769	GLN
1	A	773	ASN
1	A	776	ASN
1	A	778	ASN
1	A	834	HIS
1	A	951	ASN
1	A	1007	GLN
1	A	1041	GLN
1	A	1083	GLN

5.3.3 RNA ⓘ

There are no RNA molecules in this entry.

5.4 Non-standard residues in protein, DNA, RNA chains ⓘ

There are no non-standard protein/DNA/RNA residues in this entry.

5.5 Carbohydrates [i](#)

There are no carbohydrates in this entry.

5.6 Ligand geometry [i](#)

1 ligand is modelled in this entry.

In the following table, the Counts columns list the number of bonds (or angles) for which Mogul statistics could be retrieved, the number of bonds (or angles) that are observed in the model and the number of bonds (or angles) that are defined in the Chemical Component Dictionary. The Link column lists molecule types, if any, to which the group is linked. The Z score for a bond length (or angle) is the number of standard deviations the observed value is removed from the expected value. A bond length (or angle) with $|Z| > 2$ is considered an outlier worth inspection. RMSZ is the root-mean-square of all Z scores of the bond lengths (or angles).

Mol	Type	Chain	Res	Link	Bond lengths			Bond angles		
					Counts	RMSZ	# $ Z > 2$	Counts	RMSZ	# $ Z > 2$
2	KWT	A	1833	1	28,35,35	3.20	12 (42%)	30,57,57	4.71	11 (36%)

In the following table, the Chirals column lists the number of chiral outliers, the number of chiral centers analysed, the number of these observed in the model and the number defined in the Chemical Component Dictionary. Similar counts are reported in the Torsion and Rings columns. '-' means no outliers of that kind were identified.

Mol	Type	Chain	Res	Link	Chirals	Torsions	Rings
2	KWT	A	1833	1	-	0/7/75/75	0/5/5/5

All (12) bond length outliers are listed below:

Mol	Chain	Res	Type	Atoms	Z	Observed(Å)	Ideal(Å)
2	A	1833	KWT	C12-C13	2.13	1.57	1.54
2	A	1833	KWT	C12-C11	2.18	1.57	1.52
2	A	1833	KWT	C23-C1	2.51	1.56	1.50
2	A	1833	KWT	O6-C21	2.71	1.41	1.35
2	A	1833	KWT	C8-C7	2.81	1.41	1.35
2	A	1833	KWT	C7-C6	3.24	1.54	1.47
2	A	1833	KWT	C10-C9	3.25	1.58	1.53
2	A	1833	KWT	C3-C4	3.29	1.42	1.39
2	A	1833	KWT	C3-C2	3.79	1.59	1.49
2	A	1833	KWT	C15-C7	4.81	1.59	1.52
2	A	1833	KWT	O1-C2	5.26	1.43	1.35
2	A	1833	KWT	C9-C4	12.05	1.64	1.53

All (11) bond angle outliers are listed below:

Mol	Chain	Res	Type	Atoms	Z	Observed($^{\circ}$)	Ideal($^{\circ}$)
2	A	1833	KWT	C12-C13-C15	-5.50	103.02	109.51
2	A	1833	KWT	C16-C17-C18	-3.51	102.25	105.69
2	A	1833	KWT	O1-C2-O2	2.22	120.18	117.58
2	A	1833	KWT	C1-O1-C2	2.33	125.89	119.44
2	A	1833	KWT	C17-C18-C13	2.45	110.94	108.59
2	A	1833	KWT	C14-C13-C18	2.51	109.85	105.20
2	A	1833	KWT	C14-C13-C15	2.84	117.24	112.04
2	A	1833	KWT	C5-C6-C7	2.87	119.86	118.14
2	A	1833	KWT	C11-O6-C21	3.89	123.05	117.08
2	A	1833	KWT	C19-C3-C4	13.03	132.14	110.89
2	A	1833	KWT	C3-C4-C5	19.51	124.84	108.01

There are no chirality outliers.

There are no torsion outliers.

There are no ring outliers.

No monomer is involved in short contacts.

5.7 Other polymers [i](#)

There are no such residues in this entry.

5.8 Polymer linkage issues [i](#)

There are no chain breaks in this entry.

6 Fit of model and data ⓘ

6.1 Protein, DNA and RNA chains ⓘ

In the following table, the column labelled ‘#RSRZ> 2’ contains the number (and percentage) of RSRZ outliers, followed by percent RSRZ outliers for the chain as percentile scores relative to all X-ray entries and entries of similar resolution. The OWAB column contains the minimum, median, 95th percentile and maximum values of the occupancy-weighted average B-factor per residue. The column labelled ‘Q< 0.9’ lists the number of (and percentage) of residues with an average occupancy less than 0.9.

Mol	Chain	Analysed	<RSRZ>	#RSRZ>2	OWAB(Å ²)	Q<0.9
1	A	872/961 (90%)	0.33	38 (4%) 34 33	24, 47, 81, 101	0

All (38) RSRZ outliers are listed below:

Mol	Chain	Res	Type	RSRZ
1	A	777	LEU	6.9
1	A	533	ARG	5.6
1	A	254	LYS	5.5
1	A	898	ASN	5.1
1	A	266	ASN	5.1
1	A	522	ASN	5.1
1	A	527	ILE	4.8
1	A	375	ARG	4.7
1	A	895	THR	4.4
1	A	918	GLU	4.2
1	A	823	LEU	4.1
1	A	535	THR	3.8
1	A	525	HIS	3.7
1	A	354	LEU	3.7
1	A	542	ARG	3.7
1	A	529	LEU	3.6
1	A	143	ALA	3.4
1	A	489	GLY	3.1
1	A	919	GLU	2.9
1	A	541	ASP	2.9
1	A	488	SER	2.8
1	A	490	LYS	2.7
1	A	534	PRO	2.7
1	A	233	ILE	2.7
1	A	268	ARG	2.7
1	A	353	SER	2.7
1	A	979	ASN	2.6

Continued on next page...

Continued from previous page...

Mol	Chain	Res	Type	RSRZ
1	A	532	HIS	2.6
1	A	528	ALA	2.6
1	A	148	LEU	2.5
1	A	267	GLU	2.4
1	A	359	ARG	2.4
1	A	249	PHE	2.3
1	A	235	VAL	2.3
1	A	253	ALA	2.3
1	A	252	MET	2.1
1	A	997	THR	2.1
1	A	519	LEU	2.1

6.2 Non-standard residues in protein, DNA, RNA chains [i](#)

There are no non-standard protein/DNA/RNA residues in this entry.

6.3 Carbohydrates [i](#)

There are no carbohydrates in this entry.

6.4 Ligands [i](#)

In the following table, the Atoms column lists the number of modelled atoms in the group and the number defined in the chemical component dictionary. The B-factors column lists the minimum, median, 95th percentile and maximum values of B factors of atoms in the group. The column labelled 'Q<0.9' lists the number of atoms with occupancy less than 0.9.

Mol	Type	Chain	Res	Atoms	RSCC	RSR	B-factors(\AA^2)	Q<0.9
2	KWT	A	1833	31/31	0.88	0.20	34,39,59,63	0

6.5 Other polymers [i](#)

There are no such residues in this entry.