



Full wwPDB X-ray Structure Validation Report ⓘ

Jul 21, 2019 – 08:41 AM EDT

PDB ID : 3E7F
Title : Crystal structure of 6-phosphogluconolactonase from *Trypanosoma brucei* complexed with 6-phosphogluconic acid
Authors : Poggi, L.; Delarue, M.; Duclert-Savatier, N.; Stoven, V.
Deposited on : 2008-08-18
Resolution : 2.20 Å(reported)

This is a Full wwPDB X-ray Structure Validation Report for a publicly released PDB entry.

We welcome your comments at validation@mail.wwpdb.org

A user guide is available at

<https://www.wwpdb.org/validation/2017/XrayValidationReportHelp>

with specific help available everywhere you see the ⓘ symbol.

The following versions of software and data (see [references ⓘ](#)) were used in the production of this report:

MolProbity : 4.02b-467
Mogul : 1.8.0 (224370), CSD as540be (2019)
Xtriage (Phenix) : 1.13
EDS : 2.3.2
buster-report : 1.1.7 (2018)
Percentile statistics : 20171227.v01 (using entries in the PDB archive December 27th 2017)
Refmac : 5.8.0158
CCP4 : 7.0 (Gargrove)
Ideal geometry (proteins) : Engh & Huber (2001)
Ideal geometry (DNA, RNA) : Parkinson et al. (1996)
Validation Pipeline (wwPDB-VP) : 2.3.2

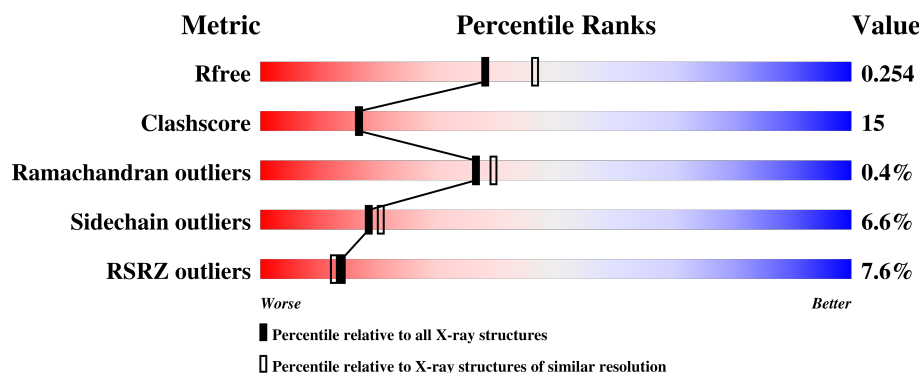
1 Overall quality at a glance

The following experimental techniques were used to determine the structure:

X-RAY DIFFRACTION

The reported resolution of this entry is 2.20 Å.

Percentile scores (ranging between 0-100) for global validation metrics of the entry are shown in the following graphic. The table shows the number of entries on which the scores are based.



Metric	Whole archive (#Entries)	Similar resolution (#Entries, resolution range(Å))
R_{free}	111664	4343 (2.20-2.20)
Clashscore	122126	5027 (2.20-2.20)
Ramachandran outliers	120053	4952 (2.20-2.20)
Sidechain outliers	120020	4953 (2.20-2.20)
RSRZ outliers	108989	4245 (2.20-2.20)

The table below summarises the geometric issues observed across the polymeric chains and their fit to the electron density. The red, orange, yellow and green segments on the lower bar indicate the fraction of residues that contain outliers for ≥ 3 , 2, 1 and 0 types of geometric quality criteria. A grey segment represents the fraction of residues that are not modelled. The numeric value for each fraction is indicated below the corresponding segment, with a dot representing fractions $\leq 5\%$. The upper red bar (where present) indicates the fraction of residues that have poor fit to the electron density. The numeric value is given above the bar.

Mol	Chain	Length	Quality of chain
1	A	265	<div> <div>8%</div> <div>66%</div> <div>28%</div> <div>..</div> </div>
1	B	265	<div> <div>7%</div> <div>71%</div> <div>26%</div> <div>..</div> </div>

The following table lists non-polymeric compounds, carbohydrate monomers and non-standard residues in protein, DNA, RNA chains that are outliers for geometric or electron-density-fit criteria:

Mol	Type	Chain	Res	Chirality	Geometry	Clashes	Electron density
3	6PG	A	843	-	X	-	-

2 Entry composition [i](#)

There are 4 unique types of molecules in this entry. The entry contains 4402 atoms, of which 0 are hydrogens and 0 are deuteriums.

In the tables below, the ZeroOcc column contains the number of atoms modelled with zero occupancy, the AltConf column contains the number of residues with at least one atom in alternate conformation and the Trace column contains the number of residues modelled with at most 2 atoms.

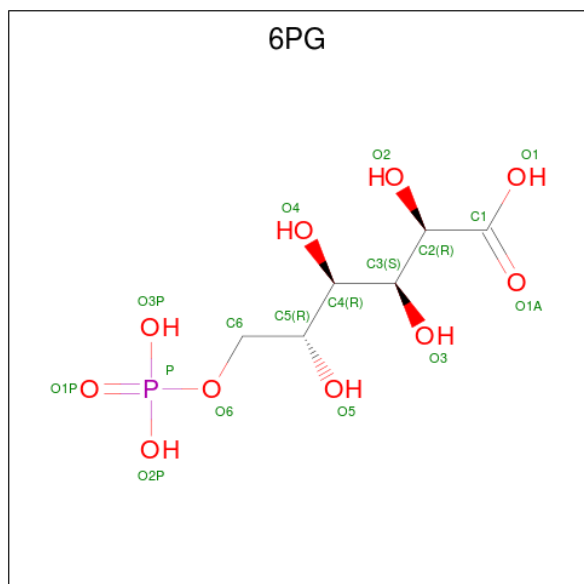
- Molecule 1 is a protein called 6-phosphogluconolactonase.

Mol	Chain	Residues	Atoms					ZeroOcc	AltConf	Trace
1	A	260	Total	C	N	O	S	0	0	0
			1959	1240	336	374	9			
1	B	263	Total	C	N	O	S	0	0	0
			1976	1250	339	378	9			

- Molecule 2 is ZINC ION (three-letter code: ZN) (formula: Zn).

Mol	Chain	Residues	Atoms		ZeroOcc	AltConf
2	B	1	Total	Zn	0	0
			1	1		
2	A	1	Total	Zn	0	0
			1	1		

- Molecule 3 is 6-PHOSPHOGLUCONIC ACID (three-letter code: 6PG) (formula: C₆H₁₃O₁₀P).



Mol	Chain	Residues	Atoms				ZeroOcc	AltConf
3	A	1	Total	C	O	P	0	0
			17	6	10	1		
3	B	1	Total	C	O	P	0	0
			17	6	10	1		

- Molecule 4 is water.

Mol	Chain	Residues	Atoms		ZeroOcc	AltConf
4	A	204	Total	O	0	0
			204	204		
4	B	227	Total	O	0	0
			227	227		

4 Data and refinement statistics

Property	Value	Source
Space group	P 1 21 1	Depositor
Cell constants a, b, c, α , β , γ	49.66Å 87.00Å 64.91Å 90.00° 96.43° 90.00°	Depositor
Resolution (Å)	23.96 – 2.20 23.96 – 2.20	Depositor EDS
% Data completeness (in resolution range)	99.2 (23.96-2.20) 99.3 (23.96-2.20)	Depositor EDS
R_{merge}	(Not available)	Depositor
R_{sym}	(Not available)	Depositor
$\langle I/\sigma(I) \rangle$ ¹	1.39 (at 2.19Å)	Xtriage
Refinement program	BUSTER-TNT 2.1.1, REFMAC 5.2.0019	Depositor
R, R_{free}	0.174 , 0.249 0.174 , 0.254	Depositor DCC
R_{free} test set	1393 reflections (5.03%)	wwPDB-VP
Wilson B-factor (Å ²)	27.5	Xtriage
Anisotropy	0.454	Xtriage
Bulk solvent k_{sol} (e/Å ³), B_{sol} (Å ²)	0.38 , 68.5	EDS
L-test for twinning ²	$\langle L \rangle = 0.49$, $\langle L^2 \rangle = 0.32$	Xtriage
Estimated twinning fraction	No twinning to report.	Xtriage
F_o, F_c correlation	0.96	EDS
Total number of atoms	4402	wwPDB-VP
Average B, all atoms (Å ²)	33.0	wwPDB-VP

Xtriage's analysis on translational NCS is as follows: *The largest off-origin peak in the Patterson function is 5.56% of the height of the origin peak. No significant pseudotranslation is detected.*

¹Intensities estimated from amplitudes.

²Theoretical values of $\langle |L| \rangle$, $\langle L^2 \rangle$ for acentric reflections are 0.5, 0.333 respectively for untwinned datasets, and 0.375, 0.2 for perfectly twinned datasets.

5 Model quality [i](#)

5.1 Standard geometry [i](#)

Bond lengths and bond angles in the following residue types are not validated in this section: ZN, 6PG

The Z score for a bond length (or angle) is the number of standard deviations the observed value is removed from the expected value. A bond length (or angle) with $|Z| > 5$ is considered an outlier worth inspection. RMSZ is the root-mean-square of all Z scores of the bond lengths (or angles).

Mol	Chain	Bond lengths		Bond angles	
		RMSZ	$\# Z > 5$	RMSZ	$\# Z > 5$
1	A	0.63	1/1999 (0.1%)	0.80	1/2716 (0.0%)
1	B	0.63	0/2016	0.81	2/2741 (0.1%)
All	All	0.63	1/4015 (0.0%)	0.80	3/5457 (0.1%)

All (1) bond length outliers are listed below:

Mol	Chain	Res	Type	Atoms	Z	Observed(Å)	Ideal(Å)
1	A	21	CYS	CB-SG	-5.13	1.73	1.81

All (3) bond angle outliers are listed below:

Mol	Chain	Res	Type	Atoms	Z	Observed(°)	Ideal(°)
1	B	125	ARG	NE-CZ-NH2	-8.99	115.81	120.30
1	B	125	ARG	NE-CZ-NH1	6.69	123.65	120.30
1	A	4	LYS	C-N-CD	5.32	139.57	128.40

There are no chirality outliers.

There are no planarity outliers.

5.2 Too-close contacts [i](#)

In the following table, the Non-H and H(model) columns list the number of non-hydrogen atoms and hydrogen atoms in the chain respectively. The H(added) column lists the number of hydrogen atoms added and optimized by MolProbity. The Clashes column lists the number of clashes within the asymmetric unit, whereas Symm-Clashes lists symmetry related clashes.

Mol	Chain	Non-H	H(model)	H(added)	Clashes	Symm-Clashes
1	A	1959	0	1968	65	0
1	B	1976	0	1979	60	0

Continued on next page...

Continued from previous page...

Mol	Chain	Non-H	H(model)	H(added)	Clashes	Symm-Clashes
2	A	1	0	0	0	0
2	B	1	0	0	0	0
3	A	17	0	11	1	0
3	B	17	0	10	3	0
4	A	204	0	0	11	0
4	B	227	0	0	6	0
All	All	4402	0	3968	121	0

The all-atom clashscore is defined as the number of clashes found per 1000 atoms (including hydrogen atoms). The all-atom clashscore for this structure is 15.

All (121) close contacts within the same asymmetric unit are listed below, sorted by their clash magnitude.

Atom-1	Atom-2	Interatomic distance (Å)	Clash overlap (Å)
1:A:212:ARG:HH21	1:B:212:ARG:NH2	1.81	0.79
1:B:12:THR:HG22	1:B:15:GLU:H	1.47	0.78
1:A:258:GLU:O	1:A:261:GLU:HG3	1.83	0.78
1:A:212:ARG:HH21	1:B:212:ARG:HH22	1.32	0.75
1:A:212:ARG:NH2	1:B:212:ARG:NH2	2.33	0.75
1:A:174:GLN:HB3	4:A:390:HOH:O	1.87	0.74
1:A:256:ASP:OD1	1:A:259:ILE:HG22	1.86	0.74
1:B:22:ARG:O	1:B:26:GLU:HG3	1.88	0.74
1:B:77:ARG:NH2	3:B:843:6PG:O2P	2.22	0.72
1:A:53:ALA:HB2	1:A:94:VAL:HG21	1.72	0.70
1:B:255:LEU:HB3	1:B:259:ILE:CG2	2.22	0.70
1:B:12:THR:CG2	1:B:15:GLU:HG3	2.23	0.69
1:B:67:ARG:NH2	1:B:102:ASP:OD2	2.26	0.68
1:B:192:GLU:HG3	1:B:193:THR:N	2.09	0.67
1:A:224:LYS:HE3	4:A:293:HOH:O	1.95	0.66
1:A:144:GLY:O	1:A:146:ALA:N	2.29	0.65
1:A:236:HIS:O	4:A:328:HOH:O	2.14	0.65
1:B:84:THR:HG23	4:B:321:HOH:O	1.96	0.65
1:A:14:GLN:O	1:A:54:ARG:NH2	2.30	0.64
1:A:144:GLY:C	1:A:145:GLU:HG3	2.18	0.64
1:A:53:ALA:HB2	1:A:94:VAL:CG2	2.26	0.64
1:A:212:ARG:HG2	1:A:212:ARG:HH11	1.63	0.63
1:B:12:THR:HG22	1:B:15:GLU:HG3	1.81	0.62
1:A:253:PHE:HB3	1:A:255:LEU:HD21	1.82	0.61
1:A:235:ALA:HB2	1:A:242:ARG:NH1	2.15	0.61
1:A:17:SER:OG	1:A:54:ARG:NH1	2.33	0.61
1:B:12:THR:HG23	1:B:14:GLN:OE1	2.00	0.61

Continued on next page...

Continued from previous page...

Atom-1	Atom-2	Interatomic distance (Å)	Clash overlap (Å)
1:A:146:ALA:HB1	4:A:355:HOH:O	2.00	0.61
1:A:144:GLY:C	1:A:146:ALA:H	2.05	0.60
1:A:242:ARG:NH1	4:A:382:HOH:O	2.33	0.60
1:B:12:THR:HB	1:B:15:GLU:HG3	1.83	0.60
1:A:191:SER:HB3	4:A:366:HOH:O	2.01	0.59
1:B:70:ARG:HD2	1:B:105:PHE:CE1	2.37	0.59
1:B:92:ARG:HA	1:B:96:LEU:HB2	1.86	0.58
1:B:33:SER:HA	1:B:36:TRP:CD2	2.39	0.57
1:A:219:THR:HG22	1:A:256:ASP:HB3	1.85	0.57
1:B:165:HIS:HB2	1:B:169:ILE:O	2.04	0.57
1:B:194:MET:HE3	3:B:843:6PG:H61	1.87	0.56
1:A:260:ALA:HB1	4:A:332:HOH:O	2.06	0.55
1:B:258:GLU:HG2	4:B:412:HOH:O	2.07	0.55
1:B:258:GLU:OE1	1:B:258:GLU:N	2.36	0.55
1:B:219:THR:O	1:B:223:LYS:HD2	2.08	0.54
1:A:135:ALA:HA	1:A:140:LEU:HD21	1.91	0.53
1:A:12:THR:HB	1:A:13:PRO:HD2	1.91	0.53
1:A:86:SER:HB3	1:A:89:ASN:HB2	1.91	0.53
1:B:12:THR:CB	1:B:15:GLU:HG3	2.38	0.53
1:A:165:HIS:NE2	3:A:843:6PG:O3P	2.42	0.53
1:B:7:ILE:HG21	1:B:263:LEU:CD2	2.38	0.53
1:A:12:THR:HB	1:A:13:PRO:CD	2.39	0.53
1:B:62:LEU:HA	1:B:66:LYS:HG3	1.91	0.52
1:B:70:ARG:HG2	1:B:72:PHE:CE1	2.45	0.52
1:A:215:ILE:HG22	1:A:217:LEU:CD2	2.40	0.52
1:A:138:LEU:HB3	1:A:139:PRO:HD2	1.91	0.51
1:A:141:LYS:HD2	1:A:142:SER:N	2.26	0.51
1:A:96:LEU:HA	1:A:99:ILE:HG12	1.92	0.51
1:A:212:ARG:HG2	1:A:212:ARG:NH1	2.26	0.50
1:B:145:GLU:O	1:B:146:ALA:HB3	2.12	0.50
1:A:16:LEU:CD2	1:A:217:LEU:HD13	2.41	0.50
1:A:195:LYS:HB3	1:A:196:PRO:HA	1.94	0.50
1:B:120:SER:HB3	1:B:199:TRP:CZ2	2.47	0.50
1:B:219:THR:HB	1:B:256:ASP:OD2	2.11	0.49
1:B:247:CYS:HB3	4:B:329:HOH:O	2.12	0.49
1:B:25:VAL:O	1:B:29:GLU:HG3	2.14	0.48
1:A:232:ALA:O	1:A:245:ARG:NH2	2.47	0.47
1:B:62:LEU:HD22	1:B:68:ALA:HB2	1.96	0.47
1:A:40:ILE:HA	1:A:155:VAL:O	2.13	0.47
1:A:47:THR:HB	1:A:48:PRO:HD3	1.96	0.47
4:A:308:HOH:O	1:B:32:GLY:HA3	2.14	0.47

Continued on next page...

Continued from previous page...

Atom-1	Atom-2	Interatomic distance (Å)	Clash overlap (Å)
1:A:150:VAL:HG21	1:A:207:THR:HA	1.97	0.46
1:B:107:PHE:CE2	1:B:130:TYR:CD2	3.03	0.46
1:B:177:LYS:HE3	4:B:273:HOH:O	2.15	0.46
1:A:53:ALA:HA	1:A:94:VAL:HG22	1.96	0.46
1:A:226:VAL:O	1:A:230:ILE:HG13	2.14	0.46
1:A:33:SER:HA	1:A:36:TRP:CD2	2.51	0.46
1:A:12:THR:CB	1:A:13:PRO:CD	2.94	0.45
1:B:8:SER:OG	1:B:254:LEU:HD22	2.16	0.45
1:A:139:PRO:HA	1:B:140:LEU:O	2.16	0.45
1:A:88:TYR:CD1	1:A:106:PRO:HB3	2.51	0.45
1:B:8:SER:OG	1:B:10:HIS:NE2	2.45	0.45
1:B:195:LYS:HG2	1:B:197:LYS:HE2	1.99	0.45
1:B:198:VAL:HG23	4:B:359:HOH:O	2.17	0.44
1:B:8:SER:HG	1:B:10:HIS:CE1	2.33	0.44
1:A:160:LEU:HG	1:A:226:VAL:HG11	1.99	0.44
1:A:70:ARG:HD3	1:A:105:PHE:CE1	2.52	0.44
1:A:261:GLU:HG2	4:A:431:HOH:O	2.17	0.44
1:B:171:PRO:HA	1:B:240:VAL:CG2	2.47	0.44
1:B:143:VAL:O	1:B:147:GLY:HA3	2.17	0.44
1:B:70:ARG:HD2	1:B:105:PHE:HE1	1.82	0.44
1:A:124:MET:HG3	1:A:187:VAL:HG11	1.99	0.44
1:B:223:LYS:NZ	3:B:843:6PG:H2	2.33	0.44
1:A:10:HIS:NE2	1:A:254:LEU:HD13	2.33	0.44
1:A:255:LEU:HB3	1:A:259:ILE:HG23	1.99	0.44
1:B:125:ARG:HD3	1:B:125:ARG:HA	1.41	0.44
1:B:33:SER:HA	1:B:36:TRP:CE2	2.53	0.43
4:A:308:HOH:O	1:B:34:GLN:HB2	2.18	0.43
1:A:18:ALA:O	1:A:22:ARG:HB2	2.19	0.43
1:B:7:ILE:HG21	1:B:263:LEU:HD23	1.99	0.43
1:A:9:VAL:HA	1:A:255:LEU:O	2.20	0.42
1:A:49:LYS:HG3	1:A:90:MET:SD	2.60	0.42
1:B:120:SER:O	1:B:124:MET:HG3	2.20	0.42
1:B:92:ARG:NE	4:B:416:HOH:O	2.52	0.42
1:A:8:SER:HG	1:A:10:HIS:CE1	2.36	0.42
1:A:92:ARG:HA	1:A:96:LEU:HB2	2.02	0.42
1:A:144:GLY:C	1:A:146:ALA:N	2.72	0.42
1:A:224:LYS:HB3	1:A:224:LYS:HE2	1.47	0.42
1:B:47:THR:HB	1:B:48:PRO:HD3	2.02	0.42
1:B:96:LEU:HA	1:B:99:ILE:HG12	2.02	0.42
1:A:171:PRO:HA	1:A:240:VAL:CG2	2.49	0.41
1:B:40:ILE:HA	1:B:155:VAL:O	2.21	0.41

Continued on next page...

Continued from previous page...

Atom-1	Atom-2	Interatomic distance (Å)	Clash overlap (Å)
1:A:223:LYS:HB2	1:A:259:ILE:HD12	2.01	0.41
1:A:86:SER:HB3	1:A:89:ASN:CB	2.51	0.41
1:B:7:ILE:HG21	1:B:263:LEU:HD21	2.02	0.41
1:A:60:LEU:HD22	1:A:64:ARG:HB2	2.03	0.41
1:A:205:PRO:O	1:A:209:MET:HG3	2.21	0.41
1:B:150:VAL:HG22	1:B:210:GLN:HG3	2.03	0.41
1:B:138:LEU:HD12	1:B:151:PRO:HB2	2.02	0.41
1:B:21:CYS:O	1:B:25:VAL:HG23	2.21	0.41
1:B:6:THR:O	1:B:252:SER:HA	2.21	0.40
1:A:174:GLN:NE2	4:A:348:HOH:O	2.55	0.40
1:A:139:PRO:O	1:A:151:PRO:HA	2.22	0.40
1:B:125:ARG:NH1	1:B:128:GLU:OE2	2.55	0.40

There are no symmetry-related clashes.

5.3 Torsion angles ⓘ

5.3.1 Protein backbone ⓘ

In the following table, the Percentiles column shows the percent Ramachandran outliers of the chain as a percentile score with respect to all X-ray entries followed by that with respect to entries of similar resolution.

The Analysed column shows the number of residues for which the backbone conformation was analysed, and the total number of residues.

Mol	Chain	Analysed	Favoured	Allowed	Outliers	Percentiles	
1	A	258/265 (97%)	239 (93%)	17 (7%)	2 (1%)	21	20
1	B	261/265 (98%)	253 (97%)	8 (3%)	0	100	100
All	All	519/530 (98%)	492 (95%)	25 (5%)	2 (0%)	36	39

All (2) Ramachandran outliers are listed below:

Mol	Chain	Res	Type
1	A	145	GLU
1	A	148	PRO

5.3.2 Protein sidechains ⓘ

In the following table, the Percentiles column shows the percent sidechain outliers of the chain as a percentile score with respect to all X-ray entries followed by that with respect to entries of similar resolution.

The Analysed column shows the number of residues for which the sidechain conformation was analysed, and the total number of residues.

Mol	Chain	Analysed	Rotameric	Outliers	Percentiles	
1	A	211/216 (98%)	194 (92%)	17 (8%)	13	13
1	B	212/216 (98%)	201 (95%)	11 (5%)	25	31
All	All	423/432 (98%)	395 (93%)	28 (7%)	18	20

All (28) residues with a non-rotameric sidechain are listed below:

Mol	Chain	Res	Type
1	A	2	SER
1	A	9	VAL
1	A	12	THR
1	A	14	GLN
1	A	21	CYS
1	A	46	SER
1	A	54	ARG
1	A	60	LEU
1	A	62	LEU
1	A	128	GLU
1	A	136	SER
1	A	141	LYS
1	A	145	GLU
1	A	160	LEU
1	A	217	LEU
1	A	234	THR
1	A	254	LEU
1	B	12	THR
1	B	21	CYS
1	B	31	SER
1	B	47	THR
1	B	62	LEU
1	B	64	ARG
1	B	66	LYS
1	B	83	SER
1	B	125	ARG
1	B	192	GLU

Continued on next page...

Continued from previous page...

Mol	Chain	Res	Type
1	B	261	GLU

Some sidechains can be flipped to improve hydrogen bonding and reduce clashes. All (4) such sidechains are listed below:

Mol	Chain	Res	Type
1	A	14	GLN
1	B	34	GLN
1	B	89	ASN
1	B	262	ASN

5.3.3 RNA [i](#)

There are no RNA molecules in this entry.

5.4 Non-standard residues in protein, DNA, RNA chains [i](#)

There are no non-standard protein/DNA/RNA residues in this entry.

5.5 Carbohydrates [i](#)

There are no carbohydrates in this entry.

5.6 Ligand geometry [i](#)

Of 4 ligands modelled in this entry, 2 are monoatomic - leaving 2 for Mogul analysis.

In the following table, the Counts columns list the number of bonds (or angles) for which Mogul statistics could be retrieved, the number of bonds (or angles) that are observed in the model and the number of bonds (or angles) that are defined in the Chemical Component Dictionary. The Link column lists molecule types, if any, to which the group is linked. The Z score for a bond length (or angle) is the number of standard deviations the observed value is removed from the expected value. A bond length (or angle) with $|Z| > 2$ is considered an outlier worth inspection. RMSZ is the root-mean-square of all Z scores of the bond lengths (or angles).

Mol	Type	Chain	Res	Link	Bond lengths			Bond angles		
					Counts	RMSZ	# $ Z > 2$	Counts	RMSZ	# $ Z > 2$
3	6PG	A	843	-	13,16,16	2.08	4 (30%)	19,23,23	1.94	6 (31%)
3	6PG	B	843	-	13,16,16	2.34	6 (46%)	19,23,23	2.41	8 (42%)

In the following table, the Chirals column lists the number of chiral outliers, the number of chiral centers analysed, the number of these observed in the model and the number defined in the Chemical Component Dictionary. Similar counts are reported in the Torsion and Rings columns. '-' means no outliers of that kind were identified.

Mol	Type	Chain	Res	Link	Chirals	Torsions	Rings
3	6PG	A	843	-	-	15/18/22/22	-
3	6PG	B	843	-	-	9/18/22/22	-

All (10) bond length outliers are listed below:

Mol	Chain	Res	Type	Atoms	Z	Observed(Å)	Ideal(Å)
3	B	843	6PG	C6-C5	4.69	1.58	1.51
3	A	843	6PG	C6-C5	4.59	1.58	1.51
3	B	843	6PG	C3-C2	4.32	1.59	1.53
3	A	843	6PG	C3-C2	3.37	1.58	1.53
3	B	843	6PG	P-O3P	2.94	1.66	1.54
3	A	843	6PG	C4-C3	2.42	1.58	1.53
3	A	843	6PG	P-O3P	2.28	1.63	1.54
3	B	843	6PG	O2-C2	2.14	1.46	1.42
3	B	843	6PG	C4-C3	2.05	1.57	1.53
3	B	843	6PG	O4-C4	2.03	1.47	1.43

All (14) bond angle outliers are listed below:

Mol	Chain	Res	Type	Atoms	Z	Observed(°)	Ideal(°)
3	B	843	6PG	O6-C6-C5	5.50	124.04	109.36
3	B	843	6PG	C6-C5-C4	4.20	120.47	112.17
3	A	843	6PG	O2-C2-C3	4.17	116.83	107.39
3	B	843	6PG	P-O6-C6	-3.64	108.28	118.30
3	B	843	6PG	O6-P-O1P	3.23	115.53	106.47
3	B	843	6PG	O2-C2-C3	3.16	114.53	107.39
3	A	843	6PG	O4-C4-C3	3.12	116.78	109.46
3	A	843	6PG	O3-C3-C2	3.03	115.51	108.95
3	B	843	6PG	O5-C5-C4	2.73	115.80	109.11
3	A	843	6PG	C4-C3-C2	2.54	118.10	113.57
3	A	843	6PG	O5-C5-C6	2.38	115.35	109.97
3	B	843	6PG	O3-C3-C2	2.24	113.78	108.95
3	A	843	6PG	P-O6-C6	-2.06	112.62	118.30
3	B	843	6PG	O2P-P-O1P	-2.04	102.47	110.53

There are no chirality outliers.

All (24) torsion outliers are listed below:

Mol	Chain	Res	Type	Atoms
3	B	843	6PG	O3-C3-C4-O4
3	B	843	6PG	C3-C4-C5-C6
3	B	843	6PG	C3-C4-C5-O5
3	B	843	6PG	O4-C4-C5-C6
3	B	843	6PG	O4-C4-C5-O5
3	B	843	6PG	O5-C5-C6-O6
3	A	843	6PG	C1-C2-C3-C4
3	A	843	6PG	O2-C2-C3-C4
3	A	843	6PG	O2-C2-C3-O3
3	A	843	6PG	C2-C3-C4-C5
3	A	843	6PG	C2-C3-C4-O4
3	A	843	6PG	O3-C3-C4-C5
3	A	843	6PG	O3-C3-C4-O4
3	A	843	6PG	C3-C4-C5-C6
3	A	843	6PG	O4-C4-C5-O5
3	A	843	6PG	C4-C5-C6-O6
3	A	843	6PG	O5-C5-C6-O6
3	A	843	6PG	C3-C4-C5-O5
3	A	843	6PG	O4-C4-C5-C6
3	B	843	6PG	C2-C3-C4-O4
3	B	843	6PG	O3-C3-C4-C5
3	A	843	6PG	C5-C6-O6-P
3	A	843	6PG	C1-C2-C3-O3
3	B	843	6PG	C6-O6-P-O1P

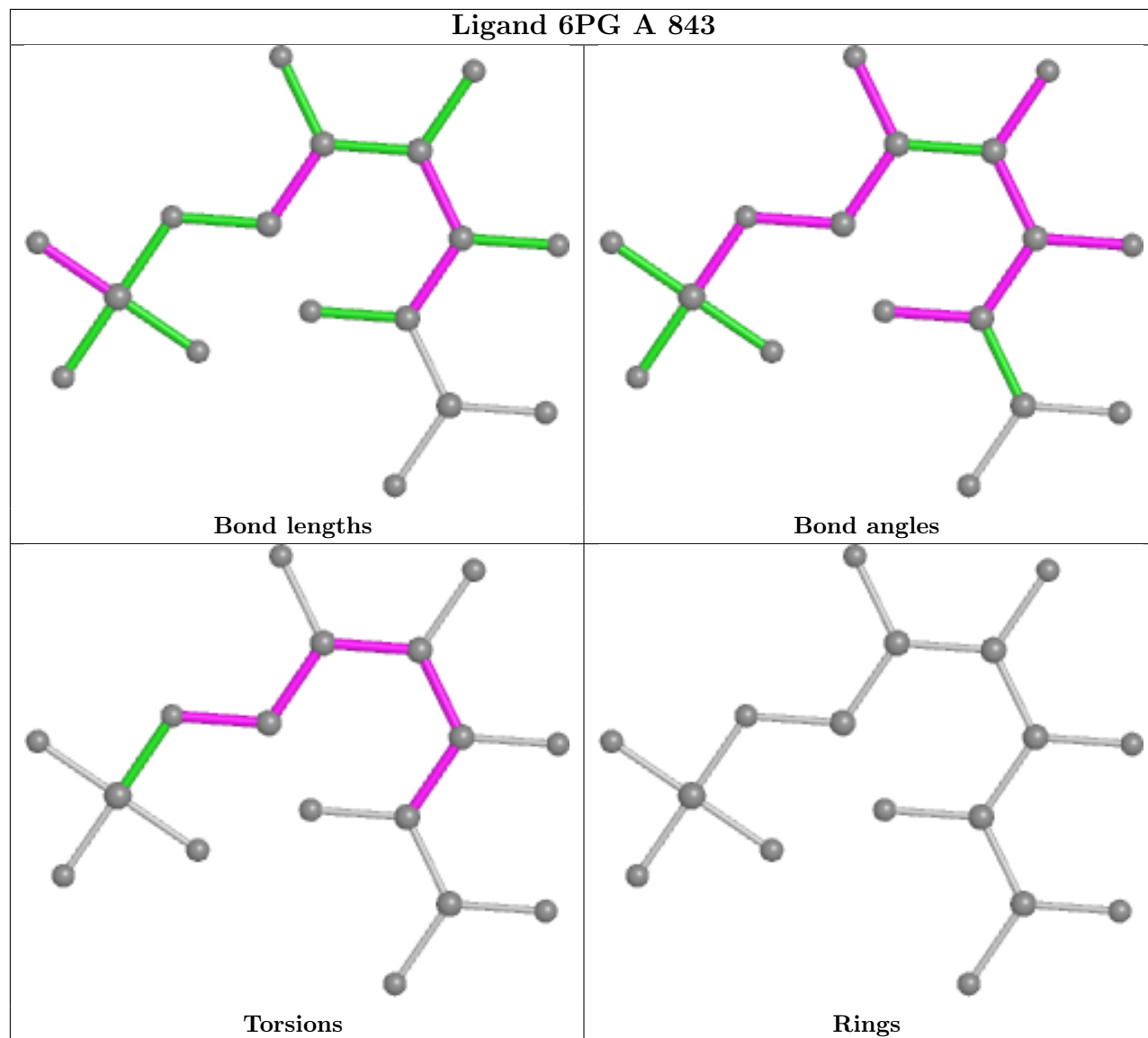
There are no ring outliers.

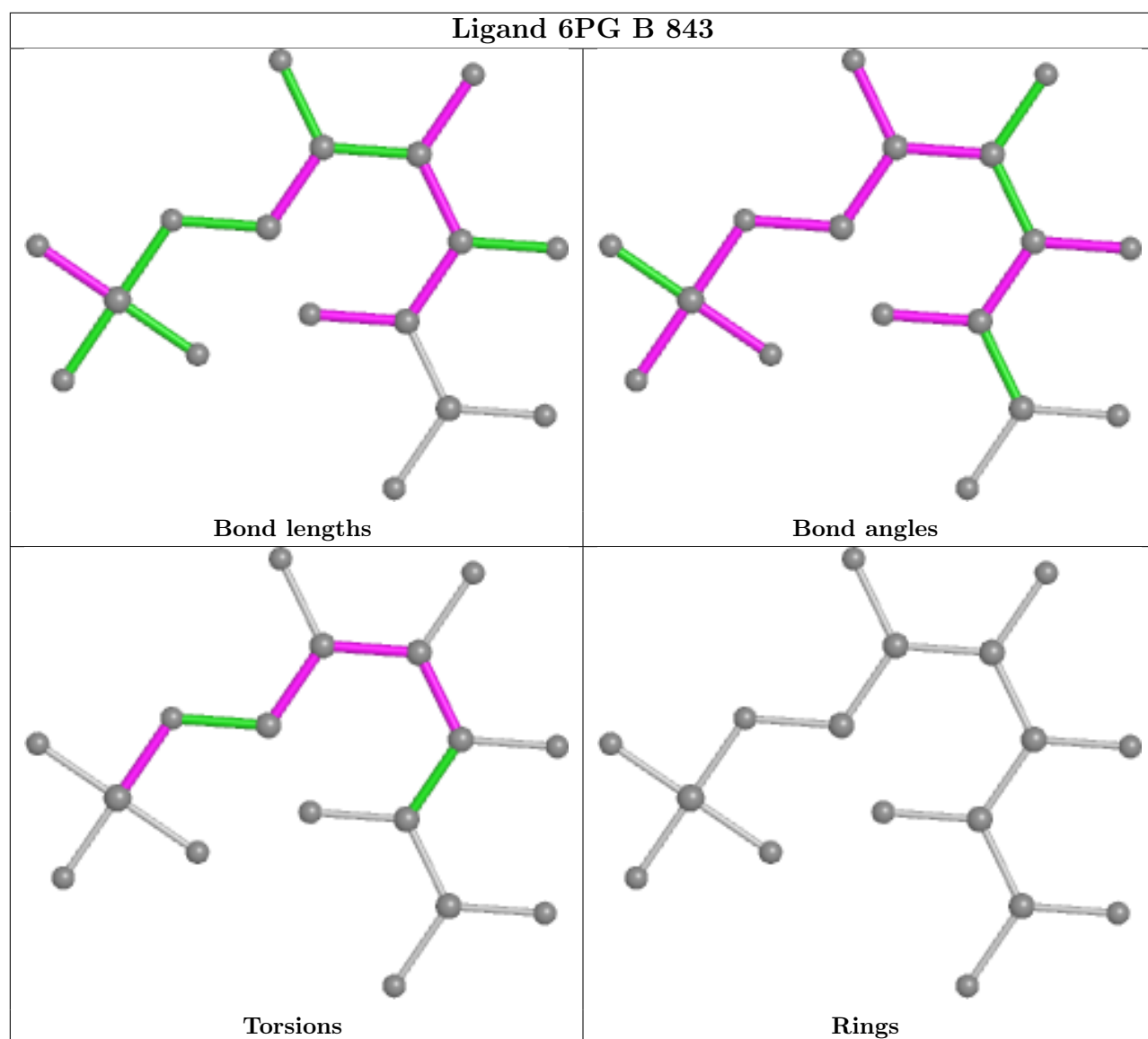
2 monomers are involved in 4 short contacts:

Mol	Chain	Res	Type	Clashes	Symm-Clashes
3	A	843	6PG	1	0
3	B	843	6PG	3	0

The following is a two-dimensional graphical depiction of Mogul quality analysis of bond lengths, bond angles, torsion angles, and ring geometry for all instances of the Ligand of Interest. In addition, ligands with molecular weight > 250 and outliers as shown on the validation Tables will also be included. For torsion angles, if less than 5% of the Mogul distribution of torsion angles is within 10 degrees of the torsion angle in question, then that torsion angle is considered an outlier. Any bond that is central to one or more torsion angles identified as an outlier by Mogul will be highlighted in the graph. For rings, the root-mean-square deviation (RMSD) between the ring in question and similar rings identified by Mogul is calculated over all ring torsion angles. If the average RMSD is greater than 60 degrees and the minimal RMSD between the ring in question and any Mogul-identified rings is also greater than 60 degrees, then that ring is considered an outlier. The outliers are highlighted in purple. The color gray indicates Mogul did not find sufficient

equivalents in the CSD to analyse the geometry.





5.7 Other polymers [i](#)

There are no such residues in this entry.

5.8 Polymer linkage issues [i](#)

There are no chain breaks in this entry.

6 Fit of model and data

6.1 Protein, DNA and RNA chains

In the following table, the column labelled ‘#RSRZ > 2’ contains the number (and percentage) of RSRZ outliers, followed by percent RSRZ outliers for the chain as percentile scores relative to all X-ray entries and entries of similar resolution. The OWAB column contains the minimum, median, 95th percentile and maximum values of the occupancy-weighted average B-factor per residue. The column labelled ‘Q < 0.9’ lists the number of (and percentage) of residues with an average occupancy less than 0.9.

Mol	Chain	Analysed	<RSRZ>	#RSRZ>2	OWAB(Å ²)	Q<0.9
1	A	260/265 (98%)	0.19	22 (8%) 11 9	17, 30, 55, 85	0
1	B	263/265 (99%)	0.09	18 (6%) 17 16	17, 27, 50, 71	0
All	All	523/530 (98%)	0.14	40 (7%) 14 12	17, 29, 51, 85	0

All (40) RSRZ outliers are listed below:

Mol	Chain	Res	Type	RSRZ
1	A	144	GLY	7.9
1	A	145	GLU	5.9
1	B	264	ALA	5.5
1	B	2	SER	5.5
1	A	147	GLY	5.4
1	A	4	LYS	4.8
1	A	14	GLN	4.7
1	A	234	THR	4.7
1	B	144	GLY	4.6
1	B	11	ALA	4.2
1	B	145	GLU	4.1
1	B	146	ALA	4.1
1	B	14	GLN	4.0
1	A	115	SER	4.0
1	B	4	LYS	3.7
1	B	193	THR	3.5
1	A	13	PRO	3.4
1	A	158	LEU	3.4
1	A	233	ASP	2.8
1	B	42	LEU	2.8
1	A	114	PRO	2.7
1	B	192	GLU	2.7
1	B	158	LEU	2.7
1	A	42	LEU	2.6

Continued on next page...

Continued from previous page...

Mol	Chain	Res	Type	RSRZ
1	A	11	ALA	2.6
1	B	147	GLY	2.6
1	A	2	SER	2.5
1	B	157	LEU	2.5
1	B	143	VAL	2.4
1	A	84	THR	2.4
1	A	146	ALA	2.4
1	A	157	LEU	2.3
1	A	235	ALA	2.3
1	B	12	THR	2.2
1	B	234	THR	2.1
1	A	41	ALA	2.1
1	A	12	THR	2.1
1	A	43	ALA	2.0
1	A	156	VAL	2.0
1	B	82	ASP	2.0

6.2 Non-standard residues in protein, DNA, RNA chains [i](#)

There are no non-standard protein/DNA/RNA residues in this entry.

6.3 Carbohydrates [i](#)

There are no carbohydrates in this entry.

6.4 Ligands [i](#)

In the following table, the Atoms column lists the number of modelled atoms in the group and the number defined in the chemical component dictionary. The B-factors column lists the minimum, median, 95th percentile and maximum values of B factors of atoms in the group. The column labelled 'Q< 0.9' lists the number of atoms with occupancy less than 0.9.

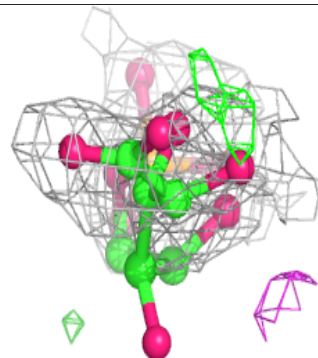
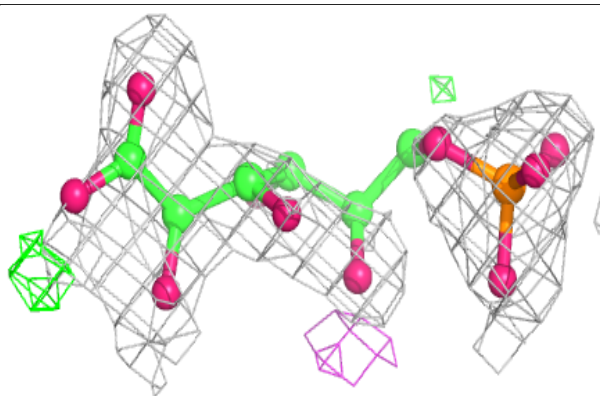
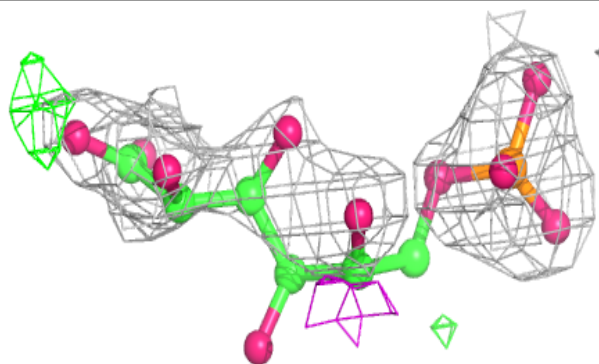
Mol	Type	Chain	Res	Atoms	RSCC	RSR	B-factors(\AA^2)	Q<0.9
3	6PG	A	843	17/17	0.76	0.26	75,79,80,81	0
3	6PG	B	843	17/17	0.77	0.27	71,74,76,76	0
2	ZN	A	301	1/1	1.00	0.05	32,32,32,32	0
2	ZN	B	300	1/1	1.00	0.06	31,31,31,31	0

The following is a graphical depiction of the model fit to experimental electron density of all instances of the Ligand of Interest. In addition, ligands with molecular weight > 250 and outliers

as shown on the geometry validation Tables will also be included. Each fit is shown from different orientation to approximate a three-dimensional view.

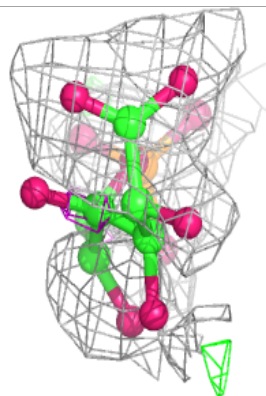
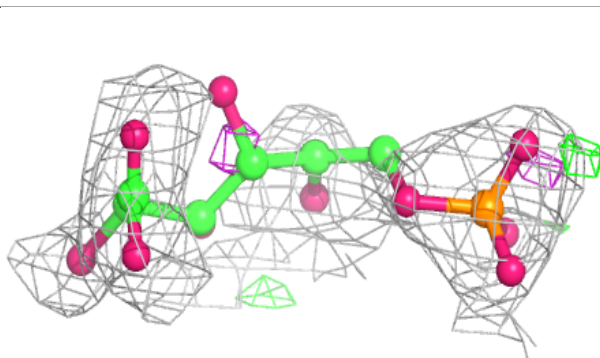
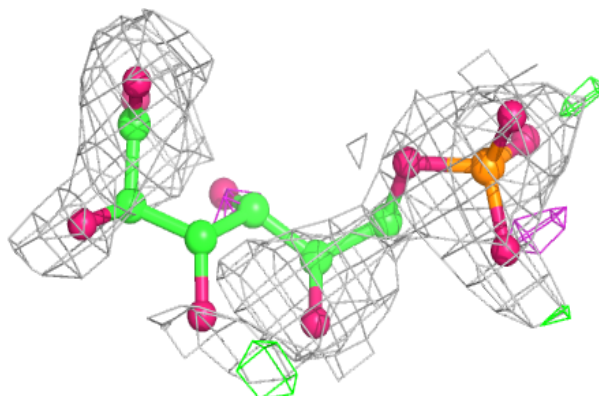
Electron density around 6PG A 843:

$2mF_o-DF_c$ (at 0.7 rmsd) in gray
 mF_o-DF_c (at 3 rmsd) in purple (negative)
and green (positive)



Electron density around 6PG B 843:

$2mF_o-DF_c$ (at 0.7 rmsd) in gray
 mF_o-DF_c (at 3 rmsd) in purple (negative)
and green (positive)



6.5 Other polymers [i](#)

There are no such residues in this entry.