



# Full wwPDB X-ray Structure Validation Report ⓘ

Mar 19, 2019 – 01:17 AM EDT

PDB ID : 6E8X  
Title : CA IX mimic Complexed with Steroidal Sulfamate Compound STX 140  
Authors : Andring, J.T.; Mckenna, R.  
Deposited on : 2018-07-31  
Resolution : 1.60 Å(reported)

This is a Full wwPDB X-ray Structure Validation Report for a publicly released PDB entry.

We welcome your comments at [validation@mail.wwpdb.org](mailto:validation@mail.wwpdb.org)

A user guide is available at

<https://www.wwpdb.org/validation/2017/XrayValidationReportHelp>

with specific help available everywhere you see the ⓘ symbol.

---

The following versions of software and data (see [references ⓘ](#)) were used in the production of this report:

MolProbity : 4.02b-467  
Mogul : 1.8.0 (224370), CSD as540be (2019)  
Xtriage (Phenix) : 1.13  
EDS : rb-20031633  
Percentile statistics : 20171227.v01 (using entries in the PDB archive December 27th 2017)  
Refmac : 5.8.0158  
CCP4 : 7.0 (Gargrove)  
Ideal geometry (proteins) : Engh & Huber (2001)  
Ideal geometry (DNA, RNA) : Parkinson et al. (1996)  
Validation Pipeline (wwPDB-VP) : rb-20031633

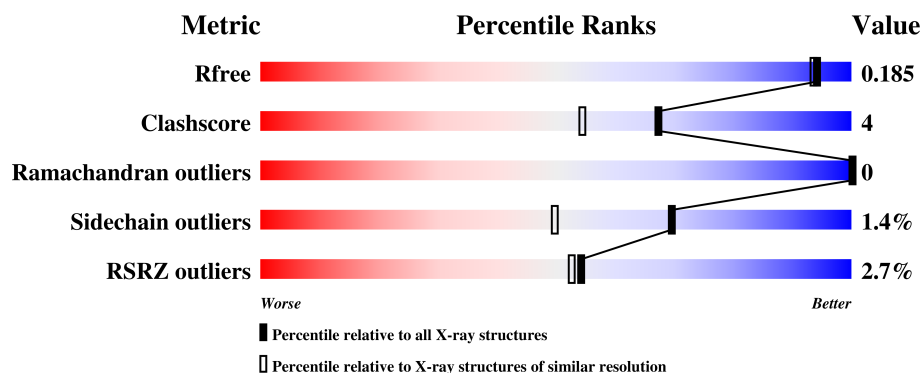
# 1 Overall quality at a glance

The following experimental techniques were used to determine the structure:

*X-RAY DIFFRACTION*

The reported resolution of this entry is 1.60 Å.

Percentile scores (ranging between 0-100) for global validation metrics of the entry are shown in the following graphic. The table shows the number of entries on which the scores are based.



Metric	Whole archive (#Entries)	Similar resolution (#Entries, resolution range(Å))
$R_{free}$	111664	2957 (1.60-1.60)
Clashscore	122126	3202 (1.60-1.60)
Ramachandran outliers	120053	3117 (1.60-1.60)
Sidechain outliers	120020	3116 (1.60-1.60)
RSRZ outliers	108989	2883 (1.60-1.60)

The table below summarises the geometric issues observed across the polymeric chains and their fit to the electron density. The red, orange, yellow and green segments on the lower bar indicate the fraction of residues that contain outliers for  $\geq 3$ , 2, 1 and 0 types of geometric quality criteria. A grey segment represents the fraction of residues that are not modelled. The numeric value for each fraction is indicated below the corresponding segment, with a dot representing fractions  $\leq 5\%$ . The upper red bar (where present) indicates the fraction of residues that have poor fit to the electron density. The numeric value is given above the bar.

Mol	Chain	Length	Quality of chain
1	A	257	<div> <div>3%</div> <div>89%</div> <div>10%</div> </div>

## 2 Entry composition

There are 4 unique types of molecules in this entry. The entry contains 2270 atoms, of which 0 are hydrogens and 0 are deuteriums.

In the tables below, the ZeroOcc column contains the number of atoms modelled with zero occupancy, the AltConf column contains the number of residues with at least one atom in alternate conformation and the Trace column contains the number of residues modelled with at most 2 atoms.

- Molecule 1 is a protein called Carbonic anhydrase 2.

Mol	Chain	Residues	Atoms					ZeroOcc	AltConf	Trace
1	A	257	Total	C	N	O	S	0	14	0
			2145	1371	369	403	2			

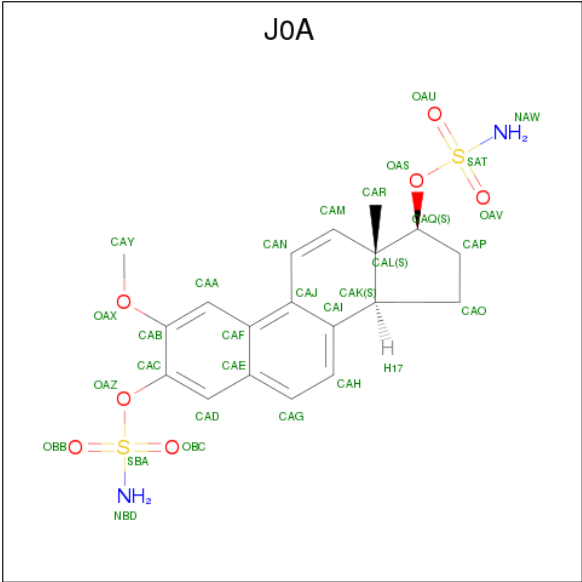
There are 7 discrepancies between the modelled and reference sequences:

Chain	Residue	Modelled	Actual	Comment	Reference
A	65	SER	ALA	engineered mutation	UNP P00918
A	67	GLN	ASN	engineered mutation	UNP P00918
A	69	THR	GLU	engineered mutation	UNP P00918
A	91	LEU	ILE	engineered mutation	UNP P00918
A	131	VAL	PHE	engineered mutation	UNP P00918
A	170	GLU	LYS	engineered mutation	UNP P00918
A	204	ALA	LEU	engineered mutation	UNP P00918

- Molecule 2 is ZINC ION (three-letter code: ZN) (formula: Zn).

Mol	Chain	Residues	Atoms		ZeroOcc	AltConf
2	A	1	Total	Zn	0	0
			1	1		

- Molecule 3 is (13alpha,17alpha)-2-methoxyestra-1,3,5,7,9,11-hexaene-3,17-diyl disulfamate (three-letter code: J0A) (formula: C<sub>19</sub>H<sub>22</sub>N<sub>2</sub>O<sub>7</sub>S<sub>2</sub>).



Mol	Chain	Residues	Atoms					ZeroOcc	AltConf
3	A	1	Total	C	N	O	S	0	0
			30	19	2	7	2		

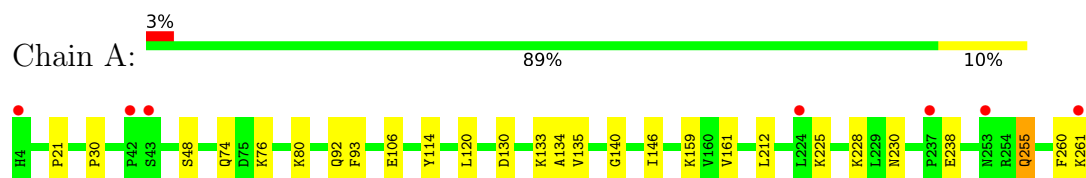
- Molecule 4 is water.

Mol	Chain	Residues	Atoms		ZeroOcc	AltConf
4	A	94	Total	O	0	0
			94	94		

### 3 Residue-property plots [i](#)

These plots are drawn for all protein, RNA and DNA chains in the entry. The first graphic for a chain summarises the proportions of the various outlier classes displayed in the second graphic. The second graphic shows the sequence view annotated by issues in geometry and electron density. Residues are color-coded according to the number of geometric quality criteria for which they contain at least one outlier: green = 0, yellow = 1, orange = 2 and red = 3 or more. A red dot above a residue indicates a poor fit to the electron density ( $RSRZ > 2$ ). Stretches of 2 or more consecutive residues without any outlier are shown as a green connector. Residues present in the sample, but not in the model, are shown in grey.

- Molecule 1: Carbonic anhydrase 2



## 4 Data and refinement statistics

Property	Value	Source
Space group	P 1 21 1	Depositor
Cell constants a, b, c, $\alpha$ , $\beta$ , $\gamma$	42.51Å 41.72Å 72.66Å 90.00° 104.01° 90.00°	Depositor
Resolution (Å)	18.92 – 1.60 18.92 – 1.60	Depositor EDS
% Data completeness (in resolution range)	99.3 (18.92-1.60) 99.3 (18.92-1.60)	Depositor EDS
$R_{merge}$	0.06	Depositor
$R_{sym}$	(Not available)	Depositor
$\langle I/\sigma(I) \rangle$ <sup>1</sup>	2.03 (at 1.60Å)	Xtriage
Refinement program	PHENIX 1.10pre_2097	Depositor
R, $R_{free}$	0.166 , 0.189 0.162 , 0.185	Depositor DCC
$R_{free}$ test set	1639 reflections (5.01%)	wwPDB-VP
Wilson B-factor (Å <sup>2</sup> )	13.5	Xtriage
Anisotropy	0.007	Xtriage
Bulk solvent $k_{sol}$ (e/Å <sup>3</sup> ), $B_{sol}$ (Å <sup>2</sup> )	0.35 , 48.1	EDS
L-test for twinning <sup>2</sup>	$\langle  L  \rangle = 0.50$ , $\langle L^2 \rangle = 0.33$	Xtriage
Estimated twinning fraction	0.024 for h,-k,-h-l	Xtriage
$F_o, F_c$ correlation	0.96	EDS
Total number of atoms	2270	wwPDB-VP
Average B, all atoms (Å <sup>2</sup> )	18.0	wwPDB-VP

Xtriage's analysis on translational NCS is as follows: *The largest off-origin peak in the Patterson function is 8.72% of the height of the origin peak. No significant pseudotranslation is detected.*

<sup>1</sup>Intensities estimated from amplitudes.

<sup>2</sup>Theoretical values of  $\langle |L| \rangle$ ,  $\langle L^2 \rangle$  for acentric reflections are 0.5, 0.333 respectively for untwinned datasets, and 0.375, 0.2 for perfectly twinned datasets.

## 5 Model quality

### 5.1 Standard geometry

Bond lengths and bond angles in the following residue types are not validated in this section: J0A, ZN

The Z score for a bond length (or angle) is the number of standard deviations the observed value is removed from the expected value. A bond length (or angle) with  $|Z| > 5$  is considered an outlier worth inspection. RMSZ is the root-mean-square of all Z scores of the bond lengths (or angles).

Mol	Chain	Bond lengths		Bond angles	
		RMSZ	$\# Z  > 5$	RMSZ	$\# Z  > 5$
1	A	0.63	3/2226 (0.1%)	0.72	1/3020 (0.0%)

Chiral center outliers are detected by calculating the chiral volume of a chiral center and verifying if the center is modelled as a planar moiety or with the opposite hand. A planarity outlier is detected by checking planarity of atoms in a peptide group, atoms in a mainchain group or atoms of a sidechain that are expected to be planar.

Mol	Chain	#Chirality outliers	#Planarity outliers
1	A	0	2

All (3) bond length outliers are listed below:

Mol	Chain	Res	Type	Atoms	Z	Observed(Å)	Ideal(Å)
1	A	114	TYR	C-O	-5.32	1.13	1.23
1	A	255	GLN	C-O	-5.04	1.13	1.23
1	A	260	PHE	C-O	-5.04	1.13	1.23

All (1) bond angle outliers are listed below:

Mol	Chain	Res	Type	Atoms	Z	Observed(°)	Ideal(°)
1	A	130	ASP	CB-CG-OD1	5.47	123.22	118.30

There are no chirality outliers.

All (2) planarity outliers are listed below:

Mol	Chain	Res	Type	Group
1	A	21	PRO	Mainchain

## 5.2 Too-close contacts ⓘ

In the following table, the Non-H and H(model) columns list the number of non-hydrogen atoms and hydrogen atoms in the chain respectively. The H(added) column lists the number of hydrogen atoms added and optimized by MolProbity. The Clashes column lists the number of clashes within the asymmetric unit, whereas Symm-Clashes lists symmetry related clashes.

Mol	Chain	Non-H	H(model)	H(added)	Clashes	Symm-Clashes
1	A	2145	0	2088	17	0
2	A	1	0	0	0	0
3	A	30	0	0	2	0
4	A	94	0	0	0	0
All	All	2270	0	2088	18	0

The all-atom clashscore is defined as the number of clashes found per 1000 atoms (including hydrogen atoms). The all-atom clashscore for this structure is 4.

All (18) close contacts within the same asymmetric unit are listed below, sorted by their clash magnitude.

Atom-1	Atom-2	Interatomic distance (Å)	Clash overlap (Å)
1:A:230:ASN:HD21	1:A:238:GLU:HG3	1.54	0.70
1:A:230:ASN:ND2	1:A:238:GLU:HG3	2.13	0.63
1:A:135[B]:VAL:HG21	3:A:302:J0A:CAO	2.32	0.59
1:A:93:PHE:HB3	1:A:120:LEU:HD23	1.85	0.58
1:A:48:SER:HB3	1:A:80[A]:LYS:HG2	1.86	0.57
1:A:159:LYS:HE2	1:A:159:LYS:H	1.73	0.54
1:A:146:ILE:HG12	1:A:212:LEU:HD12	1.90	0.52
1:A:74:GLN:H	1:A:76:LYS:NZ	2.08	0.51
1:A:30:PRO:HG3	1:A:106:GLU:HB3	1.95	0.47
1:A:74:GLN:O	1:A:76:LYS:NZ	2.48	0.47
1:A:161:VAL:CG1	1:A:225:LYS:HD2	2.45	0.47
1:A:76:LYS:HB2	1:A:76:LYS:HE2	1.72	0.45
1:A:159:LYS:CE	1:A:159:LYS:H	2.30	0.42
1:A:228:LYS:HD3	1:A:228:LYS:HA	1.78	0.41
3:A:302:J0A:CAY	3:A:302:J0A:OAZ	2.68	0.41
1:A:74:GLN:HB2	1:A:76:LYS:HZ2	1.85	0.41
1:A:133[A]:LYS:HD2	1:A:133[A]:LYS:HA	1.83	0.40
1:A:134:ALA:O	1:A:140:GLY:HA3	2.21	0.40

There are no symmetry-related clashes.



## 5.3 Torsion angles

### 5.3.1 Protein backbone

In the following table, the Percentiles column shows the percent Ramachandran outliers of the chain as a percentile score with respect to all X-ray entries followed by that with respect to entries of similar resolution.

The Analysed column shows the number of residues for which the backbone conformation was analysed, and the total number of residues.

Mol	Chain	Analysed	Favoured	Allowed	Outliers	Percentiles	
1	A	269/257 (105%)	262 (97%)	7 (3%)	0	100	100

There are no Ramachandran outliers to report.

### 5.3.2 Protein sidechains

In the following table, the Percentiles column shows the percent sidechain outliers of the chain as a percentile score with respect to all X-ray entries followed by that with respect to entries of similar resolution.

The Analysed column shows the number of residues for which the sidechain conformation was analysed, and the total number of residues.

Mol	Chain	Analysed	Rotameric	Outliers	Percentiles	
1	A	237/222 (107%)	234 (99%)	3 (1%)	71	53

All (3) residues with a non-rotameric sidechain are listed below:

Mol	Chain	Res	Type
1	A	92	GLN
1	A	255	GLN
1	A	261	LYS

Some sidechains can be flipped to improve hydrogen bonding and reduce clashes. All (1) such sidechains are listed below:

Mol	Chain	Res	Type
1	A	253	ASN

### 5.3.3 RNA

There are no RNA molecules in this entry.

## 5.4 Non-standard residues in protein, DNA, RNA chains [i](#)

There are no non-standard protein/DNA/RNA residues in this entry.

## 5.5 Carbohydrates [i](#)

There are no carbohydrates in this entry.

## 5.6 Ligand geometry [i](#)

Of 2 ligands modelled in this entry, 1 is monoatomic - leaving 1 for Mogul analysis.

In the following table, the Counts columns list the number of bonds (or angles) for which Mogul statistics could be retrieved, the number of bonds (or angles) that are observed in the model and the number of bonds (or angles) that are defined in the Chemical Component Dictionary. The Link column lists molecule types, if any, to which the group is linked. The Z score for a bond length (or angle) is the number of standard deviations the observed value is removed from the expected value. A bond length (or angle) with  $|Z| > 2$  is considered an outlier worth inspection. RMSZ is the root-mean-square of all Z scores of the bond lengths (or angles).

Mol	Type	Chain	Res	Link	Bond lengths			Bond angles		
					Counts	RMSZ	$\# Z  > 2$	Counts	RMSZ	$\# Z  > 2$
3	J0A	A	302	2	31,33,33	9.35	21 (67%)	41,53,53	4.82	26 (63%)

In the following table, the Chirals column lists the number of chiral outliers, the number of chiral centers analysed, the number of these observed in the model and the number defined in the Chemical Component Dictionary. Similar counts are reported in the Torsion and Rings columns. '-' means no outliers of that kind were identified.

Mol	Type	Chain	Res	Link	Chirals	Torsions	Rings
3	J0A	A	302	2	-	0/12/39/39	0/4/4/4

All (21) bond length outliers are listed below:

Mol	Chain	Res	Type	Atoms	Z	Observed(Å)	Ideal(Å)
3	A	302	J0A	CAL-CAQ	-4.33	1.48	1.55
3	A	302	J0A	OAS-CAQ	-3.73	1.38	1.47
3	A	302	J0A	CAC-CAB	-3.45	1.33	1.40
3	A	302	J0A	CAF-CAE	-3.05	1.37	1.43
3	A	302	J0A	OAZ-CAC	-2.85	1.36	1.42
3	A	302	J0A	CAJ-CAF	-2.75	1.40	1.45
3	A	302	J0A	CAG-CAE	-2.35	1.36	1.41
3	A	302	J0A	CAD-CAE	-2.25	1.36	1.42

*Continued on next page...*

*Continued from previous page...*

Mol	Chain	Res	Type	Atoms	Z	Observed(Å)	Ideal(Å)
3	A	302	J0A	OAZ-SBA	2.96	1.64	1.61
3	A	302	J0A	CAL-CAM	3.80	1.56	1.51
3	A	302	J0A	CAO-CAP	4.03	1.65	1.54
3	A	302	J0A	CAG-CAH	5.20	1.47	1.36
3	A	302	J0A	CAJ-CAN	5.52	1.55	1.45
3	A	302	J0A	SBA-NBD	5.72	1.65	1.58
3	A	302	J0A	CAH-CAI	6.24	1.47	1.39
3	A	302	J0A	SAT-NAW	10.87	1.70	1.58
3	A	302	J0A	OBC-SBA	16.21	1.55	1.42
3	A	302	J0A	CAN-CAM	16.59	1.56	1.33
3	A	302	J0A	OBB-SBA	23.25	1.61	1.42
3	A	302	J0A	OAV-SAT	24.40	1.62	1.42
3	A	302	J0A	OAU-SAT	25.61	1.63	1.42

All (26) bond angle outliers are listed below:

Mol	Chain	Res	Type	Atoms	Z	Observed(°)	Ideal(°)
3	A	302	J0A	OBC-SBA-OBB	-15.66	105.16	119.97
3	A	302	J0A	OBC-SBA-NBD	-8.61	96.13	109.14
3	A	302	J0A	OAX-CAB-CAA	-8.36	114.79	125.22
3	A	302	J0A	OAV-SAT-OAU	-7.17	113.18	119.97
3	A	302	J0A	CAP-CAO-CAK	-6.58	94.36	104.21
3	A	302	J0A	CAF-CAJ-CAN	-5.71	118.97	123.94
3	A	302	J0A	CAG-CAE-CAD	-5.43	112.53	122.04
3	A	302	J0A	CAC-CAD-CAE	-3.79	113.58	120.07
3	A	302	J0A	OAZ-CAC-CAD	-3.61	112.66	118.81
3	A	302	J0A	OAU-SAT-NAW	-3.56	103.76	109.14
3	A	302	J0A	CAB-CAA-CAF	-3.12	114.99	120.65
3	A	302	J0A	CAJ-CAI-CAK	-3.05	115.07	119.97
3	A	302	J0A	OAZ-SBA-OBB	-2.64	97.25	105.27
3	A	302	J0A	CAG-CAH-CAI	-2.63	117.51	121.24
3	A	302	J0A	OAS-SAT-OAV	2.03	112.39	106.37
3	A	302	J0A	OAZ-CAC-CAB	2.67	121.39	118.11
3	A	302	J0A	CAG-CAE-CAF	2.85	122.87	119.12
3	A	302	J0A	OAV-SAT-NAW	3.36	114.22	109.14
3	A	302	J0A	OAZ-SBA-NBD	3.54	115.38	106.61
3	A	302	J0A	CAD-CAE-CAF	4.22	124.49	119.25
3	A	302	J0A	OBB-SBA-NBD	5.73	117.80	109.14
3	A	302	J0A	OAX-CAB-CAC	5.79	123.47	115.41
3	A	302	J0A	CAD-CAC-CAB	5.80	125.86	120.07
3	A	302	J0A	CAY-OAX-CAB	6.00	126.41	117.53
3	A	302	J0A	OAZ-SBA-OBC	6.91	126.27	105.27

*Continued on next page...*

*Continued from previous page...*

Mol	Chain	Res	Type	Atoms	Z	Observed(°)	Ideal(°)
3	A	302	J0A	CAC-OAZ-SBA	8.05	133.94	118.50

There are no chirality outliers.

There are no torsion outliers.

There are no ring outliers.

1 monomer is involved in 2 short contacts:

Mol	Chain	Res	Type	Clashes	Symm-Clashes
3	A	302	J0A	2	0

## 5.7 Other polymers [i](#)

There are no such residues in this entry.

## 5.8 Polymer linkage issues [i](#)

There are no chain breaks in this entry.

## 6 Fit of model and data [i](#)

### 6.1 Protein, DNA and RNA chains [i](#)

In the following table, the column labelled ‘#RSRZ> 2’ contains the number (and percentage) of RSRZ outliers, followed by percent RSRZ outliers for the chain as percentile scores relative to all X-ray entries and entries of similar resolution. The OWAB column contains the minimum, median, 95<sup>th</sup> percentile and maximum values of the occupancy-weighted average B-factor per residue. The column labelled ‘Q< 0.9’ lists the number of (and percentage) of residues with an average occupancy less than 0.9.

Mol	Chain	Analysed	<RSRZ>	#RSRZ>2	OWAB(Å <sup>2</sup> )	Q<0.9
1	A	257/257 (100%)	-0.02	7 (2%) 54 53	6, 15, 36, 63	0

All (7) RSRZ outliers are listed below:

Mol	Chain	Res	Type	RSRZ
1	A	253	ASN	4.5
1	A	4[A]	HIS	3.8
1	A	42	PRO	3.4
1	A	237	PRO	2.8
1	A	43	SER	2.4
1	A	261	LYS	2.2
1	A	224	LEU	2.1

### 6.2 Non-standard residues in protein, DNA, RNA chains [i](#)

There are no non-standard protein/DNA/RNA residues in this entry.

### 6.3 Carbohydrates [i](#)

There are no carbohydrates in this entry.

### 6.4 Ligands [i](#)

In the following table, the Atoms column lists the number of modelled atoms in the group and the number defined in the chemical component dictionary. The B-factors column lists the minimum, median, 95<sup>th</sup> percentile and maximum values of B factors of atoms in the group. The column labelled ‘Q< 0.9’ lists the number of atoms with occupancy less than 0.9.

Mol	Type	Chain	Res	Atoms	RSCC	RSR	B-factors(Å <sup>2</sup> )	Q<0.9
3	J0A	A	302	30/30	0.81	0.42	13,52,75,78	0

*Continued on next page...*

*Continued from previous page...*

Mol	Type	Chain	Res	Atoms	RSCC	RSR	B-factors( $\text{\AA}^2$ )	Q<0.9
2	ZN	A	301	1/1	1.00	0.04	8,8,8,8	0

## 6.5 Other polymers [i](#)

There are no such residues in this entry.