



Full wwPDB X-ray Structure Validation Report ⓘ

Feb 21, 2018 – 04:07 pm GMT

PDB ID : 1EB2
Title : Trypsin inhibitor complex (BPO)
Authors : Wilkinson, K.W.; Young, S.C.; Liebeschuetz, J.W.; Brady, R.L.
Deposited on : 2001-07-18
Resolution : 2.00 Å(reported)

This is a Full wwPDB X-ray Structure Validation Report for a publicly released PDB entry.

We welcome your comments at validation@mail.wwpdb.org

A user guide is available at

<https://www.wwpdb.org/validation/2017/XrayValidationReportHelp>

with specific help available everywhere you see the ⓘ symbol.

The following versions of software and data (see [references ⓘ](#)) were used in the production of this report:

MolProbity : 4.02b-467
Mogul : 1.7.3 (157068), CSD as539be (2018)
Xtriage (Phenix) : **NOT EXECUTED**
EDS : **NOT EXECUTED**
Percentile statistics : 20171227.v01 (using entries in the PDB archive December 27th 2017)
Ideal geometry (proteins) : Engh & Huber (2001)
Ideal geometry (DNA, RNA) : Parkinson et al. (1996)
Validation Pipeline (wwPDB-VP) : trunk30686

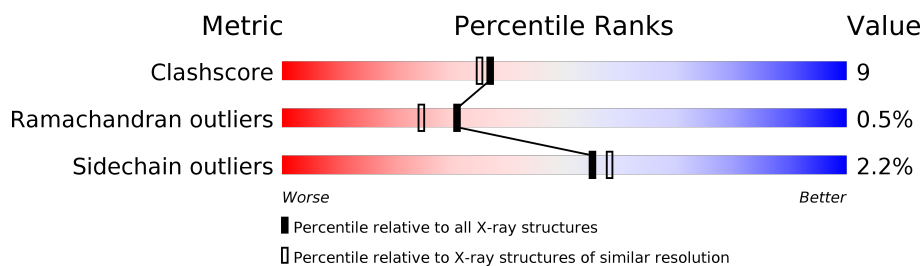
1 Overall quality at a glance

The following experimental techniques were used to determine the structure:

X-RAY DIFFRACTION

The reported resolution of this entry is 2.00 Å.

Percentile scores (ranging between 0-100) for global validation metrics of the entry are shown in the following graphic. The table shows the number of entries on which the scores are based.



Metric	Whole archive (#Entries)	Similar resolution (#Entries, resolution range(Å))
Clashscore	122078	8264 (2.00-2.00)
Ramachandran outliers	120005	8163 (2.00-2.00)
Sidechain outliers	119972	8162 (2.00-2.00)

The table below summarises the geometric issues observed across the polymeric chains and their fit to the electron density. The red, orange, yellow and green segments on the lower bar indicate the fraction of residues that contain outliers for ≥ 3 , 2, 1 and 0 types of geometric quality criteria. A grey segment represents the fraction of residues that are not modelled. The numeric value for each fraction is indicated below the corresponding segment, with a dot representing fractions $\leq 5\%$. The upper red bar (where present) indicates the fraction of residues that have poor fit to the electron density. The numeric value is given above the bar.

Note EDS was not executed.

Mol	Chain	Length	Quality of chain
1	A	223	 87% 12% ..

2 Entry composition [i](#)

There are 5 unique types of molecules in this entry. The entry contains 1932 atoms, of which 0 are hydrogens and 0 are deuteriums.

In the tables below, the ZeroOcc column contains the number of atoms modelled with zero occupancy, the AltConf column contains the number of residues with at least one atom in alternate conformation and the Trace column contains the number of residues modelled with at most 2 atoms.

- Molecule 1 is a protein called TRYPSIN.

Mol	Chain	Residues	Atoms					ZeroOcc	AltConf	Trace
			Total	C	N	O	S			
1	A	223	1629	1012	279	324	14	0	0	0

- Molecule 2 is SULFATE ION (three-letter code: SO4) (formula: O₄S).

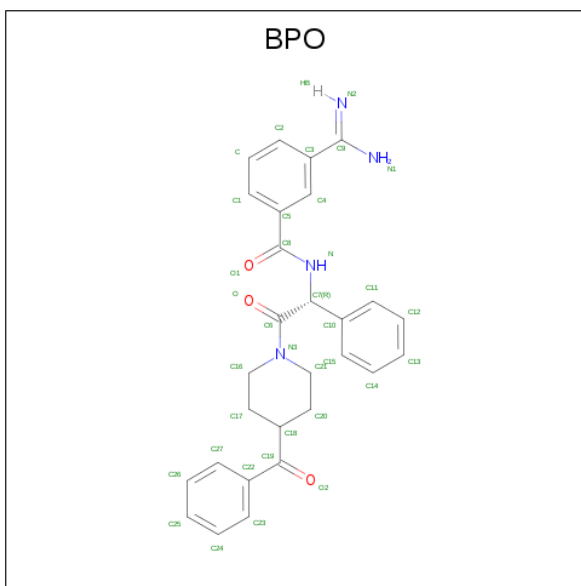


Mol	Chain	Residues	Atoms			ZeroOcc	AltConf
			Total	O	S		
2	A	1	5	4	1	0	0

- Molecule 3 is CALCIUM ION (three-letter code: CA) (formula: Ca).

Mol	Chain	Residues	Atoms		ZeroOcc	AltConf
			Total	Ca		
3	A	1	1	1	0	0

- Molecule 4 is 3-[(Z)-AMINO(IMINO)METHYL]-N-[2-(4-BENZOYL-1-PIPERIDINYL)-2-O

XO-1-PHENYLETHYL]BENZAMIDE (three-letter code: BPO) (formula: $C_{28}H_{28}N_4O_3$).

Mol	Chain	Residues	Atoms				ZeroOcc	AltConf
4	A	1	Total	C	N	O	0	0
			35	28	4	3		

- Molecule 5 is water.

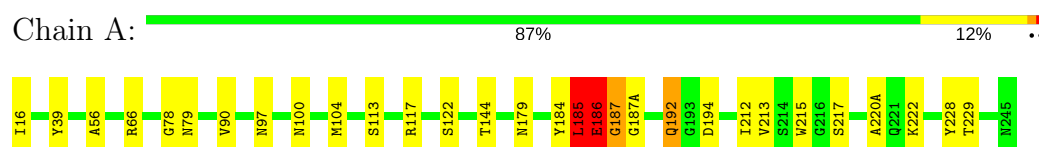
Mol	Chain	Residues	Atoms	ZeroOcc	AltConf
5	A	262	Total O 262 262	0	0

3 Residue-property plots [i](#)

These plots are drawn for all protein, RNA and DNA chains in the entry. The first graphic for a chain summarises the proportions of the various outlier classes displayed in the second graphic. The second graphic shows the sequence view annotated by issues in geometry and electron density. Residues are color-coded according to the number of geometric quality criteria for which they contain at least one outlier: green = 0, yellow = 1, orange = 2 and red = 3 or more. A red dot above a residue indicates a poor fit to the electron density ($RSRZ > 2$). Stretches of 2 or more consecutive residues without any outlier are shown as a green connector. Residues present in the sample, but not in the model, are shown in grey.

Note EDS was not executed.

• Molecule 1: TRYPSIN



4 Data and refinement statistics

Xtriage (Phenix) and EDS were not executed - this section is therefore incomplete.

Property	Value	Source
Space group	P 21 21 21	Depositor
Cell constants a, b, c, α , β , γ	60.08Å 63.83Å 70.04Å 90.00° 90.00° 90.00°	Depositor
Resolution (Å)	15.00 – 2.00	Depositor
% Data completeness (in resolution range)	91.6 (15.00-2.00)	Depositor
R_{merge}	0.06	Depositor
R_{sym}	(Not available)	Depositor
Refinement program	X-PLOR 3.0	Depositor
R, R_{free}	0.178 , 0.244	Depositor
Estimated twinning fraction	No twinning to report.	Xtriage
Total number of atoms	1932	wwPDB-VP
Average B, all atoms (Å ²)	22.0	wwPDB-VP

5 Model quality

5.1 Standard geometry

Bond lengths and bond angles in the following residue types are not validated in this section: CA, SO4, BPO

The Z score for a bond length (or angle) is the number of standard deviations the observed value is removed from the expected value. A bond length (or angle) with $|Z| > 5$ is considered an outlier worth inspection. RMSZ is the root-mean-square of all Z scores of the bond lengths (or angles).

Mol	Chain	Bond lengths		Bond angles	
		RMSZ	$\# Z > 5$	RMSZ	$\# Z > 5$
1	A	0.70	1/1660 (0.1%)	1.29	10/2250 (0.4%)

Chiral center outliers are detected by calculating the chiral volume of a chiral center and verifying if the center is modelled as a planar moiety or with the opposite hand. A planarity outlier is detected by checking planarity of atoms in a peptide group, atoms in a mainchain group or atoms of a sidechain that are expected to be planar.

Mol	Chain	#Chirality outliers	#Planarity outliers
1	A	0	2

All (1) bond length outliers are listed below:

Mol	Chain	Res	Type	Atoms	Z	Observed(Å)	Ideal(Å)
1	A	186	GLU	N-CA	-5.05	1.36	1.46

All (10) bond angle outliers are listed below:

Mol	Chain	Res	Type	Atoms	Z	Observed(°)	Ideal(°)
1	A	185	LEU	CA-C-O	7.55	135.96	120.10
1	A	186	GLU	N-CA-C	7.42	131.04	111.00
1	A	185	LEU	C-N-CA	7.21	139.74	121.70
1	A	66	ARG	NE-CZ-NH2	6.70	123.65	120.30
1	A	187	GLY	N-CA-C	-6.67	96.43	113.10
1	A	39	TYR	CB-CG-CD2	-6.23	117.26	121.00
1	A	185	LEU	O-C-N	-5.94	113.19	122.70
1	A	186	GLU	CB-CA-C	-5.62	99.16	110.40
1	A	194	ASP	CB-CG-OD1	-5.22	113.60	118.30
1	A	39	TYR	CB-CG-CD1	5.12	124.07	121.00

There are no chirality outliers.

All (2) planarity outliers are listed below:

Mol	Chain	Res	Type	Group
1	A	185	LEU	Peptide
1	A	186	GLU	Mainchain

5.2 Too-close contacts

In the following table, the Non-H and H(model) columns list the number of non-hydrogen atoms and hydrogen atoms in the chain respectively. The H(added) column lists the number of hydrogen atoms added and optimized by MolProbity. The Clashes column lists the number of clashes within the asymmetric unit, whereas Symm-Clashes lists symmetry related clashes.

Mol	Chain	Non-H	H(model)	H(added)	Clashes	Symm-Clashes
1	A	1629	0	1588	28	0
2	A	5	0	0	0	0
3	A	1	0	0	0	0
4	A	35	0	27	6	0
5	A	262	0	0	5	0
All	All	1932	0	1615	28	0

The all-atom clashscore is defined as the number of clashes found per 1000 atoms (including hydrogen atoms). The all-atom clashscore for this structure is 9.

All (28) close contacts within the same asymmetric unit are listed below, sorted by their clash magnitude.

Atom-1	Atom-2	Interatomic distance (Å)	Clash overlap (Å)
1:A:186:GLU:HA	5:A:2218:HOH:O	1.42	1.17
1:A:79:ASN:HD21	1:A:117:ARG:HH11	1.25	0.84
1:A:184:TYR:HB3	1:A:186:GLU:HB2	1.62	0.79
1:A:97:ASN:O	4:A:1248:BPO:H24	1.87	0.75
1:A:79:ASN:ND2	1:A:117:ARG:HH11	1.85	0.74
1:A:186:GLU:CA	5:A:2218:HOH:O	2.12	0.68
1:A:184:TYR:CB	1:A:186:GLU:HB2	2.23	0.68
1:A:187:GLY:HA2	1:A:220(A):ALA:O	1.96	0.65
1:A:186:GLU:HG3	5:A:2218:HOH:O	1.98	0.62
1:A:79:ASN:HD21	1:A:117:ARG:NH1	1.96	0.62
1:A:186:GLU:HB3	1:A:187:GLY:O	2.00	0.61
1:A:192:GLN:HE22	4:A:1248:BPO:C11	2.13	0.60
1:A:56:ALA:HB1	1:A:90:VAL:HG13	1.85	0.59
1:A:100:ASN:HD21	1:A:179:ASN:HD22	1.55	0.53
1:A:186:GLU:CG	5:A:2218:HOH:O	2.59	0.49

Continued on next page...

Continued from previous page...

Atom-1	Atom-2	Interatomic distance (Å)	Clash overlap (Å)
1:A:187(A):GLY:H	1:A:220(A):ALA:HB1	1.78	0.49
1:A:192:GLN:HE22	4:A:1248:BPO:C12	2.27	0.48
1:A:217:SER:HA	4:A:1248:BPO:H161	1.96	0.47
1:A:184:TYR:HB3	1:A:186:GLU:CB	2.39	0.46
1:A:56:ALA:HA	1:A:104:MET:HB2	1.97	0.46
1:A:215:TRP:CE3	4:A:1248:BPO:H27	2.51	0.45
1:A:215:TRP:CZ2	4:A:1248:BPO:H26	2.54	0.42
1:A:78:GLY:O	1:A:79:ASN:HB2	2.20	0.42
1:A:16:ILE:O	1:A:144:THR:HA	2.20	0.41
1:A:222:LYS:HE2	5:A:2242:HOH:O	2.20	0.41
1:A:185:LEU:HA	1:A:185:LEU:HD23	1.85	0.41
1:A:212:ILE:HB	1:A:229:THR:HB	2.03	0.41
1:A:213:VAL:HA	1:A:228:TYR:CD1	2.56	0.40

There are no symmetry-related clashes.

5.3 Torsion angles [i](#)

5.3.1 Protein backbone [i](#)

In the following table, the Percentiles column shows the percent Ramachandran outliers of the chain as a percentile score with respect to all X-ray entries followed by that with respect to entries of similar resolution.

The Analysed column shows the number of residues for which the backbone conformation was analysed, and the total number of residues.

Mol	Chain	Analysed	Favoured	Allowed	Outliers	Percentiles	
1	A	221/223 (99%)	216 (98%)	4 (2%)	1 (0%)	31	25

All (1) Ramachandran outliers are listed below:

Mol	Chain	Res	Type
1	A	186	GLU

5.3.2 Protein sidechains [i](#)

In the following table, the Percentiles column shows the percent sidechain outliers of the chain as a percentile score with respect to all X-ray entries followed by that with respect to entries of similar resolution.

The Analysed column shows the number of residues for which the sidechain conformation was analysed, and the total number of residues.

Mol	Chain	Analysed	Rotameric	Outliers	Percentiles
1	A	184/184 (100%)	180 (98%)	4 (2%)	55 58

All (4) residues with a non-rotameric sidechain are listed below:

Mol	Chain	Res	Type
1	A	113	SER
1	A	122	SER
1	A	186	GLU
1	A	192	GLN

Some sidechains can be flipped to improve hydrogen bonding and reduce clashes. All (3) such sidechains are listed below:

Mol	Chain	Res	Type
1	A	79	ASN
1	A	100	ASN
1	A	192	GLN

5.3.3 RNA [i](#)

There are no RNA molecules in this entry.

5.4 Non-standard residues in protein, DNA, RNA chains [i](#)

There are no non-standard protein/DNA/RNA residues in this entry.

5.5 Carbohydrates [i](#)

There are no carbohydrates in this entry.

5.6 Ligand geometry [i](#)

Of 3 ligands modelled in this entry, 1 is monoatomic - leaving 2 for Mogul analysis.

In the following table, the Counts columns list the number of bonds (or angles) for which Mogul statistics could be retrieved, the number of bonds (or angles) that are observed in the model and the number of bonds (or angles) that are defined in the Chemical Component Dictionary. The Link column lists molecule types, if any, to which the group is linked. The Z score for a bond

length (or angle) is the number of standard deviations the observed value is removed from the expected value. A bond length (or angle) with $|Z| > 2$ is considered an outlier worth inspection. RMSZ is the root-mean-square of all Z scores of the bond lengths (or angles).

Mol	Type	Chain	Res	Link	Bond lengths			Bond angles		
					Counts	RMSZ	# Z > 2	Counts	RMSZ	# Z > 2
2	SO4	A	1246	-	4,4,4	0.73	0	6,6,6	0.25	0
4	BPO	A	1248	-	38,38,38	1.33	2 (5%)	49,52,52	1.99	16 (32%)

In the following table, the Chirals column lists the number of chiral outliers, the number of chiral centers analysed, the number of these observed in the model and the number defined in the Chemical Component Dictionary. Similar counts are reported in the Torsion and Rings columns. '-' means no outliers of that kind were identified.

Mol	Type	Chain	Res	Link	Chirals	Torsions	Rings
2	SO4	A	1246	-	-	0/0/0/0	0/0/0/0
4	BPO	A	1248	-	-	0/32/42/42	0/4/4/4

All (2) bond length outliers are listed below:

Mol	Chain	Res	Type	Atoms	Z	Observed(Å)	Ideal(Å)
4	A	1248	BPO	C8-N	3.65	1.42	1.34
4	A	1248	BPO	C6-N3	4.69	1.41	1.34

All (16) bond angle outliers are listed below:

Mol	Chain	Res	Type	Atoms	Z	Observed(°)	Ideal(°)
4	A	1248	BPO	C20-C18-C19	-5.08	100.18	110.42
4	A	1248	BPO	C7-N-C8	-3.09	117.28	122.46
4	A	1248	BPO	C24-C23-C22	-2.58	117.32	120.35
4	A	1248	BPO	C21-N3-C6	-2.38	114.52	123.29
4	A	1248	BPO	C14-C15-C10	-2.30	117.72	120.64
4	A	1248	BPO	O1-C8-C5	-2.24	117.01	120.93
4	A	1248	BPO	C4-C3-C9	-2.23	116.55	120.37
4	A	1248	BPO	C17-C18-C19	-2.15	106.10	110.42
4	A	1248	BPO	C6-C7-N	2.07	114.61	108.41
4	A	1248	BPO	C15-C10-C11	2.15	120.99	118.30
4	A	1248	BPO	C2-C3-C9	2.42	123.58	120.65
4	A	1248	BPO	C25-C24-C23	2.80	124.04	120.20
4	A	1248	BPO	C16-C17-C18	2.89	115.25	110.37
4	A	1248	BPO	C21-N3-C16	3.73	119.66	112.61
4	A	1248	BPO	O-C6-C7	4.22	124.83	120.10
4	A	1248	BPO	C17-C16-N3	5.43	118.81	110.81

There are no chirality outliers.

There are no torsion outliers.

There are no ring outliers.

1 monomer is involved in 6 short contacts:

Mol	Chain	Res	Type	Clashes	Symm-Clashes
4	A	1248	BPO	6	0

5.7 Other polymers [i](#)

There are no such residues in this entry.

5.8 Polymer linkage issues [i](#)

There are no chain breaks in this entry.

6 Fit of model and data

6.1 Protein, DNA and RNA chains

EDS was not executed - this section is therefore empty.

6.2 Non-standard residues in protein, DNA, RNA chains

EDS was not executed - this section is therefore empty.

6.3 Carbohydrates

EDS was not executed - this section is therefore empty.

6.4 Ligands

EDS was not executed - this section is therefore empty.

6.5 Other polymers

EDS was not executed - this section is therefore empty.