



Full wwPDB X-ray Structure Validation Report ⓘ

Mar 8, 2018 – 08:21 pm GMT

PDB ID : 2EXB
Title : Crystal structure of penicillin binding protein 4 (dacB) from Escherichia coli, complexed with FLOMOX
Authors : Kishida, H.; Unzai, S.; Roper, D.I.; Lloyd, A.; Park, S.-Y.; Tame, J.R.H.
Deposited on : 2005-11-08
Resolution : 1.75 Å(reported)

This is a Full wwPDB X-ray Structure Validation Report for a publicly released PDB entry.

We welcome your comments at validation@mail.wwpdb.org

A user guide is available at

<https://www.wwpdb.org/validation/2017/XrayValidationReportHelp>

with specific help available everywhere you see the ⓘ symbol.

The following versions of software and data (see [references ⓘ](#)) were used in the production of this report:

MolProbity : 4.02b-467
Mogul : 1.7.3 (157068), CSD as539be (2018)
Xtriage (Phenix) : 1.13
EDS : trunk30967
Percentile statistics : 20171227.v01 (using entries in the PDB archive December 27th 2017)
Refmac : 5.8.0158
CCP4 : 7.0 (Gargrove)
Ideal geometry (proteins) : Engh & Huber (2001)
Ideal geometry (DNA, RNA) : Parkinson et al. (1996)
Validation Pipeline (wwPDB-VP) : trunk30967

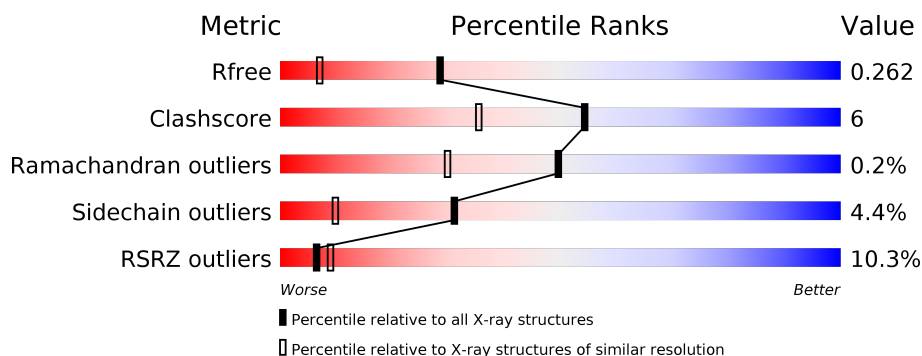
1 Overall quality at a glance

The following experimental techniques were used to determine the structure:

X-RAY DIFFRACTION

The reported resolution of this entry is 1.75 Å.

Percentile scores (ranging between 0-100) for global validation metrics of the entry are shown in the following graphic. The table shows the number of entries on which the scores are based.



Metric	Whole archive (#Entries)	Similar resolution (#Entries, resolution range(Å))
R_{free}	111664	1952 (1.76-1.76)
Clashscore	122126	2072 (1.76-1.76)
Ramachandran outliers	120053	2050 (1.76-1.76)
Sidechain outliers	120020	2050 (1.76-1.76)
RSRZ outliers	108989	1913 (1.76-1.76)

The table below summarises the geometric issues observed across the polymeric chains and their fit to the electron density. The red, orange, yellow and green segments on the lower bar indicate the fraction of residues that contain outliers for ≥ 3 , 2, 1 and 0 types of geometric quality criteria. A grey segment represents the fraction of residues that are not modelled. The numeric value for each fraction is indicated below the corresponding segment, with a dot representing fractions $\leq 5\%$. The upper red bar (where present) indicates the fraction of residues that have poor fit to the electron density. The numeric value is given above the bar.

Mol	Chain	Length	Quality of chain
1	A	458	

2 Entry composition [i](#)

There are 4 unique types of molecules in this entry. The entry contains 3621 atoms, of which 0 are hydrogens and 0 are deuteriums.

In the tables below, the ZeroOcc column contains the number of atoms modelled with zero occupancy, the AltConf column contains the number of residues with at least one atom in alternate conformation and the Trace column contains the number of residues modelled with at most 2 atoms.

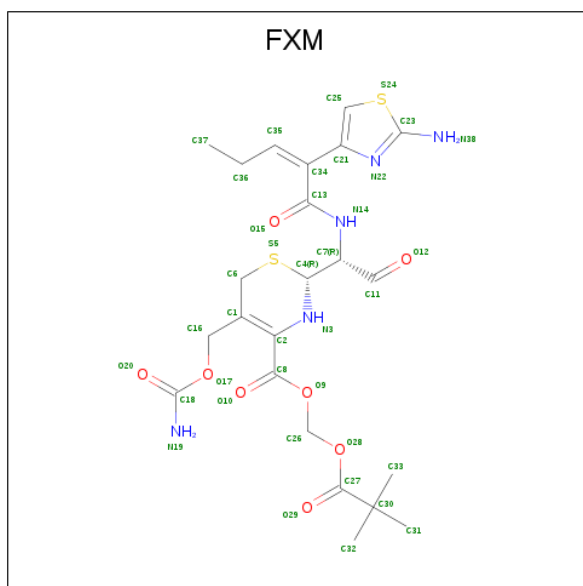
- Molecule 1 is a protein called Penicillin-binding protein 4.

Mol	Chain	Residues	Atoms					ZeroOcc	AltConf	Trace
			Total	C	N	O	S			
1	A	446	3402	2153	596	636	17	0	3	0

There are 2 discrepancies between the modelled and reference sequences:

Chain	Residue	Modelled	Actual	Comment	Reference
A	20	MET	-	INITIATING METHIONINE	UNP P24228
A	261	TYR	ASP	ENGINEERED MUTATION	UNP P24228

- Molecule 2 is 2,2-dimethylpropanoyloxymethyl (2R)-5-(aminocarbonyloxymethyl)-2-[(1R)-1-[[[(Z)-2-(2-azanyl-1,3-thiazol-4-yl)pent-2-enoyl]amino]-2-oxidanylidene-ethyl]-3,6-dihydro-2H-1,3-thiazine-4-carboxylate (three-letter code: FXM) (formula: C₂₃H₃₁N₅O₈S₂).



Mol	Chain	Residues	Atoms					ZeroOcc	AltConf
			Total	C	N	O	S		
2	A	1	38	23	5	8	2	0	0

- Molecule 3 is GLYCEROL (three-letter code: GOL) (formula: $C_3H_8O_3$).



Mol	Chain	Residues	Atoms			ZeroOcc	AltConf
3	A	1	Total	C	O	0	0
			6	3	3		

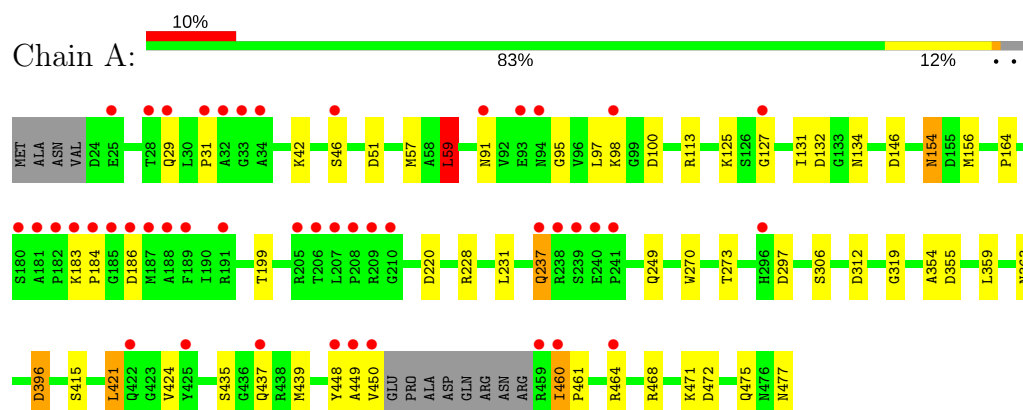
- Molecule 4 is water.

Mol	Chain	Residues	Atoms		ZeroOcc	AltConf
4	A	175	Total	O	0	0
			175	175		

3 Residue-property plots [i](#)

These plots are drawn for all protein, RNA and DNA chains in the entry. The first graphic for a chain summarises the proportions of the various outlier classes displayed in the second graphic. The second graphic shows the sequence view annotated by issues in geometry and electron density. Residues are color-coded according to the number of geometric quality criteria for which they contain at least one outlier: green = 0, yellow = 1, orange = 2 and red = 3 or more. A red dot above a residue indicates a poor fit to the electron density ($RSRZ > 2$). Stretches of 2 or more consecutive residues without any outlier are shown as a green connector. Residues present in the sample, but not in the model, are shown in grey.

- Molecule 1: Penicillin-binding protein 4



4 Data and refinement statistics

Property	Value	Source
Space group	P 41 21 2	Depositor
Cell constants a, b, c, α , β , γ	95.66Å 95.66Å 115.40Å 90.00° 90.00° 90.00°	Depositor
Resolution (Å)	20.00 – 1.75 36.82 – 1.75	Depositor EDS
% Data completeness (in resolution range)	100.0 (20.00-1.75) 95.1 (36.82-1.75)	Depositor EDS
R_{merge}	0.05	Depositor
R_{sym}	(Not available)	Depositor
$\langle I/\sigma(I) \rangle$ ¹	1.31 (at 1.75Å)	Xtriage
Refinement program	REFMAC 5.2.0003	Depositor
R, R_{free}	0.209 , 0.261 0.212 , 0.262	Depositor DCC
R_{free} test set	2638 reflections (5.09%)	wwPDB-VP
Wilson B-factor (Å ²)	29.2	Xtriage
Anisotropy	0.160	Xtriage
Bulk solvent k_{sol} (e/Å ³), B_{sol} (Å ²)	0.40 , 47.5	EDS
L-test for twinning ²	$\langle L \rangle = 0.49$, $\langle L^2 \rangle = 0.32$	Xtriage
Estimated twinning fraction	No twinning to report.	Xtriage
F_o, F_c correlation	0.95	EDS
Total number of atoms	3621	wwPDB-VP
Average B, all atoms (Å ²)	35.0	wwPDB-VP

Xtriage's analysis on translational NCS is as follows: *The largest off-origin peak in the Patterson function is 3.57% of the height of the origin peak. No significant pseudotranslation is detected.*

¹Intensities estimated from amplitudes.

²Theoretical values of $\langle |L| \rangle$, $\langle L^2 \rangle$ for acentric reflections are 0.5, 0.333 respectively for untwinned datasets, and 0.375, 0.2 for perfectly twinned datasets.

5 Model quality

5.1 Standard geometry

Bond lengths and bond angles in the following residue types are not validated in this section: FXM, GOL

The Z score for a bond length (or angle) is the number of standard deviations the observed value is removed from the expected value. A bond length (or angle) with $|Z| > 5$ is considered an outlier worth inspection. RMSZ is the root-mean-square of all Z scores of the bond lengths (or angles).

Mol	Chain	Bond lengths		Bond angles	
		RMSZ	$\# Z > 5$	RMSZ	$\# Z > 5$
1	A	0.77	0/3470	0.88	13/4711 (0.3%)

There are no bond length outliers.

All (13) bond angle outliers are listed below:

Mol	Chain	Res	Type	Atoms	Z	Observed(°)	Ideal(°)
1	A	220	ASP	CB-CG-OD2	8.08	125.57	118.30
1	A	170	ASP	CB-CG-OD2	6.60	124.24	118.30
1	A	100	ASP	CB-CG-OD2	6.58	124.22	118.30
1	A	59	LEU	CA-CB-CG	6.16	129.46	115.30
1	A	312	ASP	CB-CG-OD2	6.14	123.83	118.30
1	A	472	ASP	CB-CG-OD2	5.88	123.59	118.30
1	A	396	ASP	CB-CG-OD2	5.85	123.57	118.30
1	A	297	ASP	CB-CG-OD2	5.68	123.41	118.30
1	A	51	ASP	CB-CG-OD2	5.50	123.25	118.30
1	A	355	ASP	CB-CG-OD2	5.30	123.07	118.30
1	A	113	ARG	NE-CZ-NH2	-5.19	117.71	120.30
1	A	132	ASP	CB-CG-OD2	5.15	122.94	118.30
1	A	364	LEU	CA-CB-CG	5.06	126.94	115.30

There are no chirality outliers.

There are no planarity outliers.

5.2 Too-close contacts

In the following table, the Non-H and H(model) columns list the number of non-hydrogen atoms and hydrogen atoms in the chain respectively. The H(added) column lists the number of hydrogen atoms added and optimized by MolProbity. The Clashes column lists the number of clashes within the asymmetric unit, whereas Symm-Clashes lists symmetry related clashes.

Mol	Chain	Non-H	H(model)	H(added)	Clashes	Symm-Clashes
1	A	3402	0	3392	36	0
2	A	38	0	29	6	0
3	A	6	0	8	1	0
4	A	175	0	0	2	0
All	All	3621	0	3429	39	0

The all-atom clashscore is defined as the number of clashes found per 1000 atoms (including hydrogen atoms). The all-atom clashscore for this structure is 6.

All (39) close contacts within the same asymmetric unit are listed below, sorted by their clash magnitude.

Atom-1	Atom-2	Interatomic distance (Å)	Clash overlap (Å)
1:A:421:LEU:HD11	2:A:501:FXM:H373	1.45	0.98
1:A:57:MET:HB3	1:A:364:LEU:HD22	1.62	0.80
1:A:184:PRO:HG3	1:A:237:GLN:NE2	2.08	0.68
1:A:42:LYS:HG3	1:A:437:GLN:NE2	2.08	0.68
1:A:354:ALA:H	1:A:363:ASN:ND2	1.92	0.67
1:A:199:THR:HB	1:A:228:ARG:HG3	1.76	0.67
1:A:184:PRO:HG3	1:A:237:GLN:HE21	1.61	0.66
1:A:29:GLN:HE21	1:A:468:ARG:HD3	1.59	0.65
2:A:501:FXM:O15	2:A:501:FXM:H361	1.96	0.65
1:A:359:LEU:HA	2:A:501:FXM:H362	1.84	0.60
1:A:29:GLN:NE2	1:A:468:ARG:HH11	2.02	0.58
1:A:29:GLN:HE21	1:A:468:ARG:CD	2.16	0.58
1:A:421:LEU:HB2	1:A:424:VAL:HB	1.86	0.58
1:A:415:SER:OG	3:A:601:GOL:H11	2.04	0.57
1:A:146:ASP:O	1:A:164:PRO:HD2	2.05	0.57
1:A:471:LYS:O	1:A:475:GLN:HG2	2.05	0.56
2:A:501:FXM:O15	2:A:501:FXM:C36	2.54	0.53
1:A:42:LYS:CG	1:A:437:GLN:NE2	2.72	0.52
1:A:154:ASN:H	1:A:154:ASN:ND2	2.07	0.52
1:A:42:LYS:HG3	1:A:437:GLN:HE21	1.74	0.52
1:A:448:TYR:C	1:A:450:VAL:H	2.13	0.51
1:A:460:ILE:HB	1:A:461:PRO:HD3	1.94	0.49
1:A:59:LEU:HD22	4:A:1004:HOH:O	2.12	0.48
1:A:134:ASN:HD22	1:A:273:THR:H	1.60	0.48
1:A:183:LYS:O	1:A:186:ASP:HB2	2.13	0.48
1:A:435:SER:OG	1:A:477:ASN:O	2.32	0.47
1:A:376:TYR:CE2	1:A:380:HIS:CE1	3.03	0.46
1:A:131:ILE:O	1:A:270:TRP:HA	2.16	0.46
1:A:421:LEU:HD11	2:A:501:FXM:C37	2.33	0.45
1:A:42:LYS:HA	1:A:439:MET:HG2	1.99	0.45

Continued on next page...

Continued from previous page...

Atom-1	Atom-2	Interatomic distance (Å)	Clash overlap (Å)
1:A:319:GLY:HA3	4:A:1043:HOH:O	2.17	0.45
1:A:95:GLY:HA2	1:A:127:GLY:O	2.17	0.45
1:A:154:ASN:H	1:A:154:ASN:HD22	1.66	0.44
1:A:448:TYR:C	1:A:450:VAL:N	2.71	0.44
1:A:449:ALA:O	1:A:450:VAL:HB	2.18	0.44
1:A:354:ALA:H	1:A:363:ASN:HD21	1.66	0.43
2:A:501:FXM:H25	2:A:501:FXM:H35	1.72	0.43
1:A:156:MET:HE3	1:A:156:MET:HB2	1.97	0.41
1:A:156:MET:HE2	1:A:249:GLN:NE2	2.36	0.40

There are no symmetry-related clashes.

5.3 Torsion angles [i](#)

5.3.1 Protein backbone [i](#)

In the following table, the Percentiles column shows the percent Ramachandran outliers of the chain as a percentile score with respect to all X-ray entries followed by that with respect to entries of similar resolution.

The Analysed column shows the number of residues for which the backbone conformation was analysed, and the total number of residues.

Mol	Chain	Analysed	Favoured	Allowed	Outliers	Percentiles
1	A	442/458 (96%)	434 (98%)	7 (2%)	1 (0%)	49 30

All (1) Ramachandran outliers are listed below:

Mol	Chain	Res	Type
1	A	460	ILE

5.3.2 Protein sidechains [i](#)

In the following table, the Percentiles column shows the percent sidechain outliers of the chain as a percentile score with respect to all X-ray entries followed by that with respect to entries of similar resolution.

The Analysed column shows the number of residues for which the sidechain conformation was analysed, and the total number of residues.

Mol	Chain	Analysed	Rotameric	Outliers	Percentiles	
1	A	360/370 (97%)	344 (96%)	16 (4%)	31	10

All (16) residues with a non-rotameric sidechain are listed below:

Mol	Chain	Res	Type
1	A	31	PRO
1	A	46	SER
1	A	59	LEU
1	A	91	ASN
1	A	97	LEU
1	A	98	LYS
1	A	125	LYS
1	A	154	ASN
1	A	176	VAL
1	A	231	LEU
1	A	237	GLN
1	A	306	SER
1	A	364	LEU
1	A	396	ASP
1	A	421	LEU
1	A	464	ARG

Some sidechains can be flipped to improve hydrogen bonding and reduce clashes. All (20) such sidechains are listed below:

Mol	Chain	Res	Type
1	A	29	GLN
1	A	41	GLN
1	A	53	HIS
1	A	130	GLN
1	A	134	ASN
1	A	154	ASN
1	A	237	GLN
1	A	249	GLN
1	A	277	GLN
1	A	343	GLN
1	A	350	ASN
1	A	363	ASN
1	A	380	HIS
1	A	382	ASN
1	A	385	ASN
1	A	400	GLN
1	A	407	GLN

Continued on next page...

Continued from previous page...

Mol	Chain	Res	Type
1	A	422	GLN
1	A	426	ASN
1	A	437	GLN

5.3.3 RNA ⓘ

There are no RNA molecules in this entry.

5.4 Non-standard residues in protein, DNA, RNA chains ⓘ

There are no non-standard protein/DNA/RNA residues in this entry.

5.5 Carbohydrates ⓘ

There are no carbohydrates in this entry.

5.6 Ligand geometry ⓘ

2 ligands are modelled in this entry.

In the following table, the Counts columns list the number of bonds (or angles) for which Mogul statistics could be retrieved, the number of bonds (or angles) that are observed in the model and the number of bonds (or angles) that are defined in the Chemical Component Dictionary. The Link column lists molecule types, if any, to which the group is linked. The Z score for a bond length (or angle) is the number of standard deviations the observed value is removed from the expected value. A bond length (or angle) with $|Z| > 2$ is considered an outlier worth inspection. RMSZ is the root-mean-square of all Z scores of the bond lengths (or angles).

Mol	Type	Chain	Res	Link	Bond lengths			Bond angles		
					Counts	RMSZ	$\# Z > 2$	Counts	RMSZ	$\# Z > 2$
2	FXM	A	501	1	32,39,39	4.44	14 (43%)	35,54,54	3.62	18 (51%)
3	GOL	A	601	-	5,5,5	0.44	0	5,5,5	0.87	0

In the following table, the Chirals column lists the number of chiral outliers, the number of chiral centers analysed, the number of these observed in the model and the number defined in the Chemical Component Dictionary. Similar counts are reported in the Torsion and Rings columns. '-' means no outliers of that kind were identified.

Mol	Type	Chain	Res	Link	Chirals	Torsions	Rings
2	FXM	A	501	1	-	2/32/55/55	0/1/2/2

Continued on next page...

Continued from previous page...

Mol	Type	Chain	Res	Link	Chirals	Torsions	Rings
3	GOL	A	601	-	-	0/4/4/4	0/0/0/0

All (14) bond length outliers are listed below:

Mol	Chain	Res	Type	Atoms	Z	Observed(Å)	Ideal(Å)
2	A	501	FXM	C36-C35	-5.52	1.40	1.50
2	A	501	FXM	O17-C16	-3.35	1.37	1.44
2	A	501	FXM	C21-C34	-3.09	1.39	1.47
2	A	501	FXM	O28-C27	2.04	1.37	1.33
2	A	501	FXM	C16-C1	2.47	1.54	1.50
2	A	501	FXM	C1-C2	2.64	1.40	1.34
2	A	501	FXM	C2-C8	2.69	1.52	1.46
2	A	501	FXM	O28-C26	2.79	1.47	1.42
2	A	501	FXM	C34-C13	3.49	1.56	1.49
2	A	501	FXM	C7-C11	4.67	1.56	1.50
2	A	501	FXM	O17-C18	7.76	1.46	1.35
2	A	501	FXM	C18-N19	8.22	1.49	1.33
2	A	501	FXM	C35-C34	9.22	1.41	1.34
2	A	501	FXM	O20-C18	16.83	1.45	1.21

All (18) bond angle outliers are listed below:

Mol	Chain	Res	Type	Atoms	Z	Observed(°)	Ideal(°)
2	A	501	FXM	O17-C18-O20	-13.55	110.11	123.08
2	A	501	FXM	O20-C18-N19	-7.76	112.50	125.49
2	A	501	FXM	C16-O17-C18	-7.03	107.99	115.73
2	A	501	FXM	C1-C6-S5	-5.24	105.35	115.08
2	A	501	FXM	O28-C27-O29	-3.30	117.65	124.51
2	A	501	FXM	C26-O28-C27	-2.77	110.40	117.22
2	A	501	FXM	C7-N14-C13	-2.68	117.72	122.14
2	A	501	FXM	O10-C8-C2	-2.68	118.70	123.94
2	A	501	FXM	O15-C13-C34	-2.49	118.20	122.08
2	A	501	FXM	O9-C8-O10	-2.18	119.29	123.31
2	A	501	FXM	C21-C25-S24	-2.12	109.19	111.79
2	A	501	FXM	C4-N3-C2	2.13	123.34	118.32
2	A	501	FXM	O17-C16-C1	2.88	120.20	106.86
2	A	501	FXM	N38-C23-N22	2.96	127.06	123.21
2	A	501	FXM	O9-C8-C2	3.41	117.28	112.37
2	A	501	FXM	O17-C18-N19	3.41	115.39	111.09
2	A	501	FXM	C34-C13-N14	3.46	120.02	116.00
2	A	501	FXM	O28-C27-C30	4.13	121.18	112.60

There are no chirality outliers.

All (2) torsion outliers are listed below:

Mol	Chain	Res	Type	Atoms
2	A	501	FXM	C26-O9-C8-O10
2	A	501	FXM	C16-O17-C18-O20

There are no ring outliers.

2 monomers are involved in 7 short contacts:

Mol	Chain	Res	Type	Clashes	Symm-Clashes
2	A	501	FXM	6	0
3	A	601	GOL	1	0

5.7 Other polymers [i](#)

There are no such residues in this entry.

5.8 Polymer linkage issues [i](#)

There are no chain breaks in this entry.

6 Fit of model and data ⓘ

6.1 Protein, DNA and RNA chains ⓘ

In the following table, the column labelled ‘#RSRZ> 2’ contains the number (and percentage) of RSRZ outliers, followed by percent RSRZ outliers for the chain as percentile scores relative to all X-ray entries and entries of similar resolution. The OWAB column contains the minimum, median, 95th percentile and maximum values of the occupancy-weighted average B-factor per residue. The column labelled ‘Q< 0.9’ lists the number of (and percentage) of residues with an average occupancy less than 0.9.

Mol	Chain	Analysed	<RSRZ>	#RSRZ>2	OWAB(Å ²)	Q<0.9
1	A	446/458 (97%)	0.54	46 (10%) 6 9	20, 32, 53, 76	1 (0%)

All (46) RSRZ outliers are listed below:

Mol	Chain	Res	Type	RSRZ
1	A	459	ARG	8.5
1	A	450	VAL	6.8
1	A	189	PHE	6.4
1	A	460	ILE	6.4
1	A	449	ALA	5.9
1	A	184	PRO	5.4
1	A	182	PRO	5.2
1	A	183	LYS	5.1
1	A	185	GLY	4.9
1	A	179	TYR	4.7
1	A	187	MET	4.6
1	A	188	ALA	4.5
1	A	448	TYR	4.3
1	A	91	ASN	4.1
1	A	437	GLN	3.9
1	A	239	SER	3.7
1	A	46	SER	3.5
1	A	25	GLU	3.3
1	A	240	GLU	3.1
1	A	32	ALA	3.1
1	A	209	ARG	3.1
1	A	210	GLY	3.1
1	A	33	GLY	3.1
1	A	186	ASP	3.0
1	A	93	GLU	2.9
1	A	28	THR	2.9
1	A	422	GLN	2.8

Continued on next page...

Continued from previous page...

Mol	Chain	Res	Type	RSRZ
1	A	29	GLN	2.8
1	A	237	GLN	2.7
1	A	191	ARG	2.6
1	A	238	ARG	2.6
1	A	181	ALA	2.5
1	A	94	ASN	2.5
1	A	241	PRO	2.5
1	A	296	HIS	2.4
1	A	98	LYS	2.4
1	A	208	PRO	2.3
1	A	464	ARG	2.3
1	A	425	TYR	2.2
1	A	207	LEU	2.2
1	A	34	ALA	2.2
1	A	206	THR	2.1
1	A	31	PRO	2.0
1	A	205	ARG	2.0
1	A	180	SER	2.0
1	A	127	GLY	2.0

6.2 Non-standard residues in protein, DNA, RNA chains [i](#)

There are no non-standard protein/DNA/RNA residues in this entry.

6.3 Carbohydrates [i](#)

There are no carbohydrates in this entry.

6.4 Ligands [i](#)

In the following table, the Atoms column lists the number of modelled atoms in the group and the number defined in the chemical component dictionary. The B-factors column lists the minimum, median, 95th percentile and maximum values of B factors of atoms in the group. The column labelled 'Q< 0.9' lists the number of atoms with occupancy less than 0.9.

Mol	Type	Chain	Res	Atoms	RSCC	RSR	B-factors(\AA^2)	Q<0.9
2	FXM	A	501	38/38	0.71	0.25	32,61,76,77	0
3	GOL	A	601	6/6	0.92	0.15	39,46,48,52	0

6.5 Other polymers [i](#)

There are no such residues in this entry.