



Full wwPDB X-ray Structure Validation Report ⓘ

Mar 8, 2018 – 11:24 pm GMT

PDB ID : 2EXX
Title : Crystal structure of HSCARG from Homo sapiens in complex with NADP
Authors : Dai, X.; Chen, Q.; Yao, D.; Liang, Y.; Dong, Y.; Gu, X.; Zheng, X.; Luo, M.
Deposited on : 2005-11-09
Resolution : 2.40 Å(reported)

This is a Full wwPDB X-ray Structure Validation Report for a publicly released PDB entry.

We welcome your comments at validation@mail.wwpdb.org

A user guide is available at

<https://www.wwpdb.org/validation/2017/XrayValidationReportHelp>

with specific help available everywhere you see the ⓘ symbol.

The following versions of software and data (see [references ⓘ](#)) were used in the production of this report:

MolProbity : 4.02b-467
Mogul : 1.7.3 (157068), CSD as539be (2018)
Xtriage (Phenix) : 1.13
EDS : trunk30967
Percentile statistics : 20171227.v01 (using entries in the PDB archive December 27th 2017)
Refmac : 5.8.0158
CCP4 : 7.0 (Gargrove)
Ideal geometry (proteins) : Engh & Huber (2001)
Ideal geometry (DNA, RNA) : Parkinson et al. (1996)
Validation Pipeline (wwPDB-VP) : trunk30967

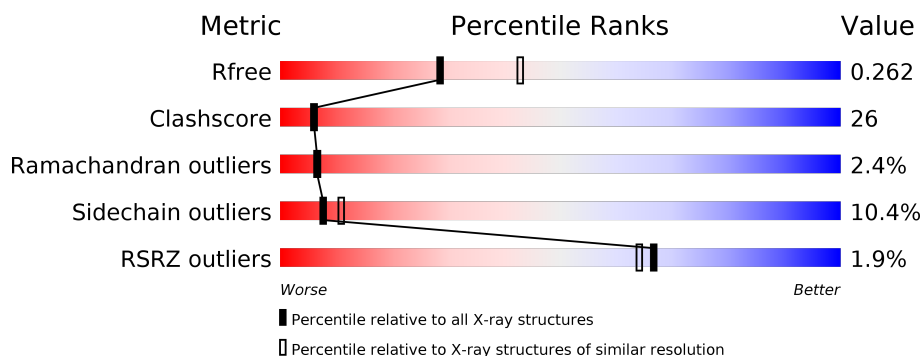
1 Overall quality at a glance

The following experimental techniques were used to determine the structure:

X-RAY DIFFRACTION

The reported resolution of this entry is 2.40 Å.

Percentile scores (ranging between 0-100) for global validation metrics of the entry are shown in the following graphic. The table shows the number of entries on which the scores are based.



Metric	Whole archive (#Entries)	Similar resolution (#Entries, resolution range(Å))
R_{free}	111664	3481 (2.40-2.40)
Clashscore	122126	3956 (2.40-2.40)
Ramachandran outliers	120053	3897 (2.40-2.40)
Sidechain outliers	120020	3898 (2.40-2.40)
RSRZ outliers	108989	3386 (2.40-2.40)

The table below summarises the geometric issues observed across the polymeric chains and their fit to the electron density. The red, orange, yellow and green segments on the lower bar indicate the fraction of residues that contain outliers for ≥ 3 , 2, 1 and 0 types of geometric quality criteria. A grey segment represents the fraction of residues that are not modelled. The numeric value for each fraction is indicated below the corresponding segment, with a dot representing fractions $\leq 5\%$. The upper red bar (where present) indicates the fraction of residues that have poor fit to the electron density. The numeric value is given above the bar.

Mol	Chain	Length	Quality of chain
1	A	306	 67% 27% 6%
1	B	306	 4% 45% 38% 8% 9%

2 Entry composition

There are 4 unique types of molecules in this entry. The entry contains 4736 atoms, of which 0 are hydrogens and 0 are deuteriums.

In the tables below, the ZeroOcc column contains the number of atoms modelled with zero occupancy, the AltConf column contains the number of residues with at least one atom in alternate conformation and the Trace column contains the number of residues modelled with at most 2 atoms.

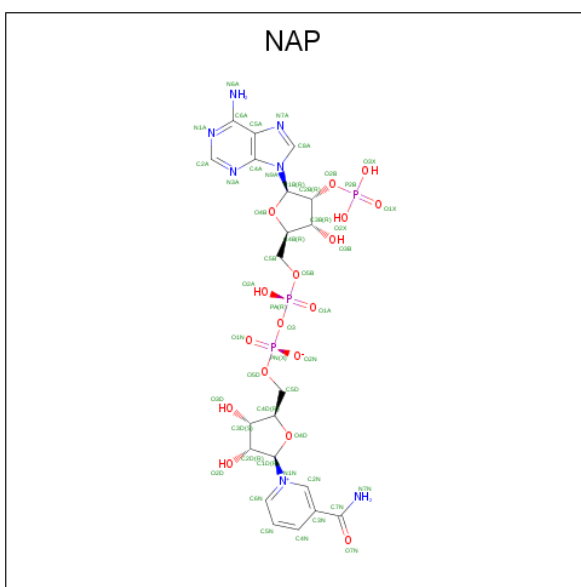
- Molecule 1 is a protein called HSCARG protein.

Mol	Chain	Residues	Atoms					ZeroOcc	AltConf	Trace
1	A	305	Total	C	N	O	S	0	0	0
			2392	1523	416	442	11			
1	B	279	Total	C	N	O	S	0	0	0
			2200	1398	384	408	10			

There are 14 discrepancies between the modelled and reference sequences:

Chain	Residue	Modelled	Actual	Comment	Reference
A	-6	LEU	-	CLONING ARTIFACT	GB 13938446
A	-5	TYR	-	CLONING ARTIFACT	GB 13938446
A	-4	LYS	-	CLONING ARTIFACT	GB 13938446
A	-3	LYS	-	CLONING ARTIFACT	GB 13938446
A	-2	ALA	-	CLONING ARTIFACT	GB 13938446
A	-1	GLY	-	CLONING ARTIFACT	GB 13938446
A	0	LEU	-	CLONING ARTIFACT	GB 13938446
B	-6	LEU	-	CLONING ARTIFACT	GB 13938446
B	-5	TYR	-	CLONING ARTIFACT	GB 13938446
B	-4	LYS	-	CLONING ARTIFACT	GB 13938446
B	-3	LYS	-	CLONING ARTIFACT	GB 13938446
B	-2	ALA	-	CLONING ARTIFACT	GB 13938446
B	-1	GLY	-	CLONING ARTIFACT	GB 13938446
B	0	LEU	-	CLONING ARTIFACT	GB 13938446

- Molecule 2 is NADP NICOTINAMIDE-ADENINE-DINUCLEOTIDE PHOSPHATE (three-letter code: NAP) (formula: C₂₁H₂₈N₇O₁₇P₃).



Mol	Chain	Residues	Atoms					ZeroOcc	AltConf
2	A	1	Total	C	N	O	P	0	0
			48	21	7	17	3		

- Molecule 3 is GLYCEROL (three-letter code: GOL) (formula: $\text{C}_3\text{H}_8\text{O}_3$).



Mol	Chain	Residues	Atoms			ZeroOcc	AltConf
3	A	1	Total	C	O	0	0
			6	3	3		

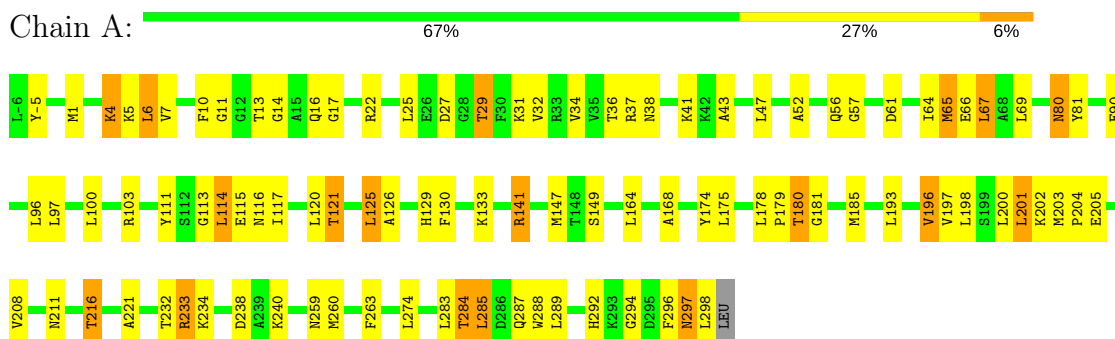
- Molecule 4 is water.

Mol	Chain	Residues	Atoms		ZeroOcc	AltConf
4	A	63	Total 63	O 63	0	0
4	B	27	Total 27	O 27	0	0

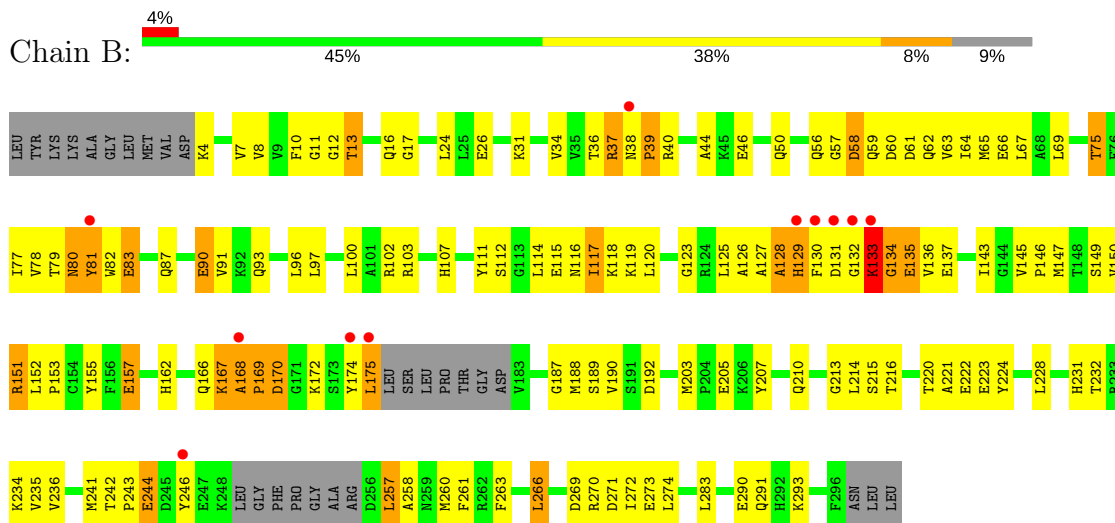
3 Residue-property plots

These plots are drawn for all protein, RNA and DNA chains in the entry. The first graphic for a chain summarises the proportions of the various outlier classes displayed in the second graphic. The second graphic shows the sequence view annotated by issues in geometry and electron density. Residues are color-coded according to the number of geometric quality criteria for which they contain at least one outlier: green = 0, yellow = 1, orange = 2 and red = 3 or more. A red dot above a residue indicates a poor fit to the electron density ($RSRZ > 2$). Stretches of 2 or more consecutive residues without any outlier are shown as a green connector. Residues present in the sample, but not in the model, are shown in grey.

• Molecule 1: HSCARG protein



• Molecule 1: HSCARG protein



4 Data and refinement statistics

Property	Value	Source
Space group	F 2 3	Depositor
Cell constants a, b, c, α , β , γ	223.30Å 223.30Å 223.30Å 90.00° 90.00° 90.00°	Depositor
Resolution (Å)	30.00 – 2.40 34.05 – 2.41	Depositor EDS
% Data completeness (in resolution range)	(Not available) (30.00-2.40) 95.3 (34.05-2.41)	Depositor EDS
R_{merge}	(Not available)	Depositor
R_{sym}	(Not available)	Depositor
$\langle I/\sigma(I) \rangle$ ¹	6.19 (at 2.42Å)	Xtriage
Refinement program	CNS 1.1	Depositor
R, R_{free}	0.233 , 0.265 0.232 , 0.262	Depositor DCC
R_{free} test set	1687 reflections (4.96%)	wwPDB-VP
Wilson B-factor (Å ²)	28.9	Xtriage
Anisotropy	0.000	Xtriage
Bulk solvent k_{sol} (e/Å ³), B_{sol} (Å ²)	0.37 , 19.1	EDS
L-test for twinning ²	$\langle L \rangle = 0.47$, $\langle L^2 \rangle = 0.29$	Xtriage
Estimated twinning fraction	0.093 for k,h,-l	Xtriage
F_o, F_c correlation	0.91	EDS
Total number of atoms	4736	wwPDB-VP
Average B, all atoms (Å ²)	30.0	wwPDB-VP

Xtriage's analysis on translational NCS is as follows: *The largest off-origin peak in the Patterson function is 1.95% of the height of the origin peak. No significant pseudotranslation is detected.*

¹Intensities estimated from amplitudes.

²Theoretical values of $\langle |L| \rangle$, $\langle L^2 \rangle$ for acentric reflections are 0.5, 0.333 respectively for untwinned datasets, and 0.375, 0.2 for perfectly twinned datasets.

5 Model quality [i](#)

5.1 Standard geometry [i](#)

Bond lengths and bond angles in the following residue types are not validated in this section: GOL, NAP

The Z score for a bond length (or angle) is the number of standard deviations the observed value is removed from the expected value. A bond length (or angle) with $|Z| > 5$ is considered an outlier worth inspection. RMSZ is the root-mean-square of all Z scores of the bond lengths (or angles).

Mol	Chain	Bond lengths		Bond angles	
		RMSZ	$\# Z > 5$	RMSZ	$\# Z > 5$
1	A	0.39	0/2438	0.69	0/3292
1	B	0.39	0/2240	0.69	2/3021 (0.1%)
All	All	0.39	0/4678	0.69	2/6313 (0.0%)

There are no bond length outliers.

All (2) bond angle outliers are listed below:

Mol	Chain	Res	Type	Atoms	Z	Observed(°)	Ideal(°)
1	B	81	TYR	N-CA-C	6.26	127.90	111.00
1	B	167	LYS	N-CA-C	-6.26	94.11	111.00

There are no chirality outliers.

There are no planarity outliers.

5.2 Too-close contacts [i](#)

In the following table, the Non-H and H(model) columns list the number of non-hydrogen atoms and hydrogen atoms in the chain respectively. The H(added) column lists the number of hydrogen atoms added and optimized by MolProbity. The Clashes column lists the number of clashes within the asymmetric unit, whereas Symm-Clashes lists symmetry related clashes.

Mol	Chain	Non-H	H(model)	H(added)	Clashes	Symm-Clashes
1	A	2392	0	2427	93	0
1	B	2200	0	2219	156	0
2	A	48	0	24	9	0
3	A	6	0	8	1	0
4	A	63	0	0	2	0
4	B	27	0	0	0	0
All	All	4736	0	4678	246	0

The all-atom clashscore is defined as the number of clashes found per 1000 atoms (including hydrogen atoms). The all-atom clashscore for this structure is 26.

All (246) close contacts within the same asymmetric unit are listed below, sorted by their clash magnitude.

Atom-1	Atom-2	Interatomic distance (Å)	Clash overlap (Å)
1:A:11:GLY:HA2	2:A:3698:NAP:O3B	1.57	1.04
1:B:166:GLN:C	1:B:168:ALA:H	1.61	1.01
1:B:172:LYS:HE2	1:B:224:TYR:HB3	1.42	1.01
1:B:168:ALA:HB1	1:B:169:PRO:HD2	1.41	1.00
1:B:37:ARG:H	1:B:37:ARG:HD3	1.29	0.94
1:B:168:ALA:CB	1:B:169:PRO:HD2	2.00	0.92
1:B:175:LEU:HD23	1:B:175:LEU:H	1.32	0.91
1:B:166:GLN:C	1:B:168:ALA:N	2.24	0.90
1:B:220:THR:HG22	1:B:222:GLU:H	1.37	0.90
1:B:13:THR:HG22	1:B:37:ARG:NH2	1.88	0.88
1:B:56:GLN:CD	1:B:56:GLN:H	1.79	0.86
1:B:57:GLY:HA3	1:B:64:ILE:HG21	1.58	0.85
1:B:8:VAL:HB	1:B:75:THR:HG23	1.56	0.85
1:B:46:GLU:HG3	1:B:50:GLN:NE2	1.95	0.82
1:A:36:THR:HG22	1:A:38:ASN:H	1.44	0.81
1:B:168:ALA:O	1:B:170:ASP:N	2.12	0.81
1:B:168:ALA:HB1	1:B:169:PRO:CD	2.11	0.81
1:A:216:THR:CG2	1:A:284:THR:HA	2.12	0.79
1:B:57:GLY:CA	1:B:64:ILE:HD13	2.13	0.79
1:A:216:THR:HG21	1:A:283:LEU:O	1.82	0.79
1:A:180:THR:HG21	1:A:221:ALA:H	1.48	0.79
1:B:37:ARG:H	1:B:37:ARG:CD	1.92	0.78
1:A:232:THR:O	1:A:233:ARG:HG2	1.84	0.77
1:B:37:ARG:N	1:B:37:ARG:HD3	1.98	0.77
1:B:175:LEU:N	1:B:175:LEU:HD23	2.01	0.75
1:B:107:HIS:O	1:B:146:PRO:HG2	1.88	0.73
1:B:57:GLY:HA2	1:B:64:ILE:HD13	1.70	0.73
1:B:13:THR:HG22	1:B:37:ARG:CZ	2.18	0.73
1:B:128:ALA:O	1:B:129:HIS:HB2	1.88	0.73
1:A:14:GLY:HA3	2:A:3698:NAP:H51A	1.70	0.73
1:A:193:LEU:O	1:A:196:VAL:HG13	1.89	0.72
1:A:65:MET:HE3	1:A:65:MET:HA	1.71	0.72
1:B:58:ASP:N	1:B:58:ASP:OD2	2.23	0.71
1:B:12:GLY:HA3	1:B:34:VAL:HG13	1.72	0.70
1:A:65:MET:HA	1:A:65:MET:CE	2.22	0.70
1:B:116:ASN:HD22	1:B:119:LYS:H	1.38	0.69
1:B:69:LEU:HD21	1:B:75:THR:HG21	1.72	0.69

Continued on next page...

Continued from previous page...

Atom-1	Atom-2	Interatomic distance (Å)	Clash overlap (Å)
1:A:296:PHE:O	1:A:298:LEU:HD12	1.91	0.69
1:A:168:ALA:HB2	1:A:175:LEU:HD13	1.73	0.69
1:A:4:LYS:HE3	1:A:5:LYS:N	2.07	0.69
1:B:7:VAL:HG11	1:B:24:LEU:HD23	1.74	0.69
1:B:132:GLY:O	1:B:133:LYS:O	2.10	0.68
1:B:83:GLU:OE1	1:B:83:GLU:HA	1.91	0.67
1:B:151:ARG:NH1	1:B:151:ARG:HG3	2.08	0.67
1:A:4:LYS:HE3	1:A:4:LYS:HA	1.76	0.67
1:B:8:VAL:HB	1:B:75:THR:CG2	2.25	0.66
1:B:46:GLU:HG3	1:B:50:GLN:HE22	1.58	0.66
1:B:134:GLY:O	1:B:136:VAL:N	2.28	0.66
1:B:228:LEU:HD22	1:B:236:VAL:HG21	1.75	0.66
1:B:153:PRO:HG3	1:B:214:LEU:O	1.96	0.66
1:B:220:THR:HG22	1:B:222:GLU:N	2.09	0.66
1:A:66:GLU:O	1:A:67:LEU:HB2	1.95	0.65
1:B:78:VAL:HG12	1:B:80:ASN:H	1.62	0.65
1:A:296:PHE:O	1:A:298:LEU:N	2.30	0.65
1:B:155:TYR:CG	1:B:190:VAL:HG22	2.32	0.64
1:B:57:GLY:HA3	1:B:64:ILE:HD13	1.80	0.64
1:B:102:ARG:HD2	1:B:143:ILE:HG23	1.80	0.64
1:B:272:ILE:HG13	1:B:273:GLU:N	2.11	0.64
1:B:10:PHE:CD2	1:B:77:ILE:HG22	2.32	0.64
1:A:216:THR:HG21	1:A:284:THR:HA	1.81	0.63
1:A:11:GLY:CA	2:A:3698:NAP:O3B	2.41	0.63
1:A:284:THR:HG22	1:A:287:GLN:H	1.63	0.62
1:A:13:THR:HG21	1:A:41:LYS:NZ	2.14	0.62
1:B:151:ARG:HB2	1:B:213:GLY:HA2	1.82	0.61
1:B:77:ILE:HD11	1:B:111:TYR:CD2	2.35	0.61
1:A:117:ILE:O	1:A:121:THR:HB	2.02	0.60
1:B:143:ILE:HG22	1:B:145:VAL:HG23	1.83	0.60
1:B:153:PRO:CG	1:B:214:LEU:O	2.50	0.60
1:A:4:LYS:CA	1:A:4:LYS:HE3	2.32	0.60
1:A:126:ALA:H	1:A:259:ASN:HD22	1.49	0.60
1:B:231:HIS:CE1	1:B:290:GLU:HG2	2.37	0.59
1:B:232:THR:HG22	1:B:234:LYS:HB2	1.84	0.59
1:B:243:PRO:O	1:B:244:GLU:HB2	2.03	0.59
1:B:151:ARG:HH11	1:B:151:ARG:HG3	1.66	0.59
1:A:36:THR:O	1:A:56:GLN:HA	2.02	0.59
1:A:10:PHE:HZ	1:A:69:LEU:HD21	1.68	0.59
1:A:27:ASP:OD2	1:A:29:THR:OG1	2.21	0.58
1:B:151:ARG:HH11	1:B:151:ARG:CG	2.17	0.58

Continued on next page...

Continued from previous page...

Atom-1	Atom-2	Interatomic distance (Å)	Clash overlap (Å)
1:B:79:THR:HG21	1:B:90:GLU:HG2	1.83	0.58
1:B:133:LYS:HD2	1:B:133:LYS:N	2.19	0.58
1:B:157:GLU:H	1:B:157:GLU:CD	2.05	0.58
1:A:121:THR:HG21	1:A:125:LEU:HD12	1.85	0.58
1:B:131:ASP:HA	1:B:133:LYS:HZ2	1.69	0.58
1:B:69:LEU:HD12	1:B:100:LEU:HD23	1.85	0.58
1:B:81:TYR:HD2	1:B:114:LEU:HB2	1.67	0.57
1:B:153:PRO:HD2	1:B:188:MET:CE	2.34	0.57
1:B:36:THR:HG22	1:B:38:ASN:N	2.20	0.57
1:A:126:ALA:H	1:A:259:ASN:ND2	2.03	0.57
1:B:131:ASP:CG	1:B:132:GLY:H	2.07	0.57
1:A:6:LEU:HD23	1:A:7:VAL:N	2.20	0.57
1:A:178:LEU:O	1:A:180:THR:N	2.38	0.56
1:B:4:LYS:O	1:B:31:LYS:HE2	2.06	0.56
1:A:4:LYS:HG3	1:A:31:LYS:HD3	1.86	0.56
1:A:121:THR:HG21	1:A:125:LEU:H	1.71	0.56
1:B:168:ALA:CB	1:B:169:PRO:CD	2.73	0.56
1:A:4:LYS:HE3	1:A:5:LYS:H	1.70	0.56
1:A:284:THR:HB	1:A:287:GLN:OE1	2.05	0.56
1:B:170:ASP:HA	1:B:235:VAL:O	2.06	0.55
1:A:294:GLY:O	1:A:297:ASN:ND2	2.38	0.55
1:A:4:LYS:CE	1:A:4:LYS:HA	2.31	0.55
1:B:231:HIS:HE1	1:B:290:GLU:HG2	1.71	0.55
1:B:39:PRO:HG3	1:B:56:GLN:HB3	1.88	0.55
1:A:121:THR:CG2	1:A:125:LEU:H	2.19	0.55
1:B:133:LYS:CE	1:B:151:ARG:HH21	2.19	0.55
1:B:131:ASP:CG	1:B:132:GLY:N	2.59	0.55
1:A:65:MET:HG2	1:A:97:LEU:HD21	1.89	0.55
1:B:172:LYS:NZ	1:B:228:LEU:HD13	2.22	0.55
1:B:82:TRP:NE1	1:B:260:MET:HG2	2.22	0.55
1:B:79:THR:O	1:B:79:THR:HG22	2.07	0.54
1:A:16:GLN:HG3	2:A:3698:NAP:O1N	2.07	0.54
1:B:12:GLY:HA3	1:B:34:VAL:CG1	2.38	0.54
1:B:189:SER:HB3	1:B:192:ASP:OD2	2.08	0.54
1:A:41:LYS:HE3	1:B:62:GLN:OE1	2.08	0.54
1:B:56:GLN:N	1:B:56:GLN:CD	2.55	0.53
1:A:168:ALA:HB2	1:A:175:LEU:CD1	2.37	0.53
1:B:115:GLU:OE2	1:B:151:ARG:NH1	2.41	0.53
1:B:257:LEU:O	1:B:260:MET:HB2	2.09	0.53
1:A:66:GLU:OE2	1:A:103:ARG:NH2	2.42	0.53
1:A:284:THR:HG23	4:A:3744:HOH:O	2.09	0.53

Continued on next page...

Continued from previous page...

Atom-1	Atom-2	Interatomic distance (Å)	Clash overlap (Å)
1:B:228:LEU:O	1:B:232:THR:HB	2.09	0.53
1:A:36:THR:HG23	2:A:3698:NAP:O3X	2.09	0.53
1:B:37:ARG:O	1:B:39:PRO:HD3	2.08	0.53
1:B:134:GLY:O	1:B:135:GLU:C	2.47	0.52
1:B:111:TYR:O	1:B:149:SER:HA	2.10	0.52
1:B:187:GLY:O	1:B:216:THR:HG22	2.10	0.52
1:B:40:ARG:HH11	1:B:40:ARG:HG2	1.73	0.52
1:A:203:MET:N	1:A:204:PRO:HD3	2.25	0.52
1:A:57:GLY:HA2	1:A:64:ILE:HG21	1.93	0.51
1:B:134:GLY:O	1:B:137:GLU:N	2.43	0.51
1:B:131:ASP:C	1:B:133:LYS:H	2.13	0.51
1:B:175:LEU:N	1:B:175:LEU:CD2	2.71	0.51
1:B:79:THR:HG21	1:B:90:GLU:CG	2.41	0.51
1:B:69:LEU:HD21	1:B:75:THR:CG2	2.41	0.51
1:B:66:GLU:OE1	1:B:103:ARG:NH2	2.43	0.51
1:B:16:GLN:NE2	1:B:152:LEU:HD13	2.26	0.50
1:A:296:PHE:C	1:A:298:LEU:HD12	2.32	0.50
1:B:128:ALA:HB1	1:B:130:PHE:H	1.76	0.50
1:A:13:THR:HG21	1:A:41:LYS:HZ3	1.73	0.50
1:B:91:VAL:CG1	1:B:135:GLU:HG2	2.41	0.50
1:B:153:PRO:HD2	1:B:188:MET:HE1	1.94	0.50
1:A:90:GLU:OE2	1:A:133:LYS:HE2	2.12	0.49
1:B:123:GLY:C	1:B:128:ALA:HB2	2.33	0.49
1:A:117:ILE:HG23	1:A:125:LEU:CD1	2.43	0.49
1:B:291:GLN:O	1:B:291:GLN:HG3	2.13	0.49
1:B:10:PHE:HB3	1:B:59:GLN:HG2	1.95	0.49
1:B:175:LEU:CD1	1:B:260:MET:HB2	2.42	0.48
1:B:133:LYS:HE2	1:B:151:ARG:HH21	1.79	0.48
1:A:34:VAL:HG21	1:A:47:LEU:HD13	1.96	0.47
1:A:65:MET:HG2	1:A:97:LEU:CD2	2.43	0.47
1:B:169:PRO:O	1:B:235:VAL:O	2.31	0.47
1:B:232:THR:HG22	1:B:234:LYS:CB	2.44	0.47
1:B:243:PRO:CG	1:B:261:PHE:CD1	2.97	0.47
1:B:37:ARG:HG3	1:B:37:ARG:HH11	1.79	0.47
1:A:164:LEU:HD11	1:A:298:LEU:HD13	1.95	0.47
1:A:4:LYS:NZ	1:A:29:THR:O	2.36	0.47
1:A:80:ASN:HA	2:A:3698:NAP:O3D	2.15	0.47
1:A:41:LYS:NZ	2:A:3698:NAP:O1X	2.47	0.47
1:A:41:LYS:HE2	1:B:96:LEU:HD22	1.96	0.47
1:B:214:LEU:O	1:B:270:ARG:HD2	2.14	0.47
1:A:10:PHE:CZ	1:A:69:LEU:HD21	2.49	0.47

Continued on next page...

Continued from previous page...

Atom-1	Atom-2	Interatomic distance (Å)	Clash overlap (Å)
1:A:238:ASP:O	1:A:240:LYS:HG2	2.15	0.47
1:B:263:PHE:O	1:B:266:LEU:HB2	2.14	0.47
1:A:180:THR:HG21	1:A:221:ALA:N	2.25	0.46
1:B:16:GLN:HE21	1:B:152:LEU:HD13	1.80	0.46
1:A:178:LEU:HD22	1:A:185:MET:HE1	1.96	0.46
1:B:153:PRO:HD2	1:B:188:MET:HE2	1.96	0.46
1:A:1:MET:HA	1:A:1:MET:CE	2.45	0.46
1:B:257:LEU:C	1:B:257:LEU:HD23	2.36	0.46
1:B:216:THR:HG21	1:B:283:LEU:O	2.16	0.46
1:B:8:VAL:O	1:B:75:THR:HG22	2.16	0.46
1:A:216:THR:HG23	1:A:284:THR:HA	1.95	0.46
1:B:61:ASP:O	1:B:65:MET:HG3	2.14	0.46
1:A:141:ARG:NH2	1:A:211:ASN:OD1	2.48	0.46
1:A:96:LEU:HD13	1:A:96:LEU:C	2.37	0.46
1:B:166:GLN:O	1:B:167:LYS:HB2	2.16	0.46
1:A:4:LYS:HG3	1:A:31:LYS:CD	2.46	0.45
1:B:91:VAL:HG11	1:B:135:GLU:HG2	1.98	0.45
1:A:111:TYR:O	1:A:149:SER:HA	2.16	0.45
1:B:39:PRO:O	1:B:44:ALA:HB3	2.17	0.45
1:A:197:VAL:O	1:A:201:LEU:HD22	2.16	0.45
2:A:3698:NAP:C7N	3:A:2647:GOL:H2	2.47	0.45
1:B:77:ILE:HG13	1:B:77:ILE:O	2.16	0.45
1:B:82:TRP:HH2	1:B:263:PHE:HB2	1.81	0.45
1:B:7:VAL:O	1:B:7:VAL:HG13	2.17	0.45
1:B:132:GLY:C	1:B:133:LYS:O	2.54	0.45
1:B:220:THR:HB	1:B:223:GLU:HG3	1.99	0.45
1:B:157:GLU:CD	1:B:190:VAL:HG23	2.37	0.45
1:B:205:GLU:H	1:B:205:GLU:CD	2.19	0.45
1:B:56:GLN:NE2	1:B:56:GLN:H	2.15	0.45
1:B:87:GLN:OE1	1:B:117:ILE:HG23	2.16	0.45
1:B:11:GLY:O	1:B:17:GLY:HA3	2.17	0.44
1:B:13:THR:HB	1:B:36:THR:HG23	1.99	0.44
1:A:31:LYS:NZ	1:A:31:LYS:HB3	2.33	0.44
1:B:131:ASP:O	1:B:133:LYS:N	2.49	0.44
1:B:215:SER:O	1:B:272:ILE:HA	2.18	0.44
1:B:123:GLY:O	1:B:128:ALA:HB2	2.18	0.44
1:B:131:ASP:HB2	1:B:133:LYS:HZ3	1.83	0.44
1:B:241:MET:HB3	1:B:246:TYR:CZ	2.52	0.44
1:A:13:THR:HG23	1:A:43:ALA:HB3	1.99	0.43
1:B:246:TYR:CD2	1:B:257:LEU:HD21	2.53	0.43
1:A:22:ARG:HD3	4:A:3726:HOH:O	2.18	0.43

Continued on next page...

Continued from previous page...

Atom-1	Atom-2	Interatomic distance (Å)	Clash overlap (Å)
1:A:121:THR:HG21	1:A:125:LEU:N	2.34	0.43
1:B:10:PHE:HD2	1:B:77:ILE:HG22	1.81	0.43
1:A:174:TYR:CE2	1:A:234:LYS:HD3	2.53	0.43
1:A:25:LEU:HD11	1:A:52:ALA:HB2	2.00	0.43
1:A:11:GLY:C	1:A:17:GLY:HA3	2.38	0.43
1:A:4:LYS:C	1:A:4:LYS:HE3	2.38	0.43
1:A:56:GLN:NE2	1:B:63:VAL:HG21	2.34	0.43
1:B:175:LEU:HD11	1:B:260:MET:HB2	2.01	0.43
1:A:288:TRP:O	1:A:292:HIS:HB2	2.19	0.42
1:A:234:LYS:HZ2	1:A:298:LEU:C	2.22	0.42
1:A:130:PHE:CE1	1:A:260:MET:HG3	2.54	0.42
1:B:232:THR:O	1:B:234:LYS:HG3	2.19	0.42
1:B:243:PRO:O	1:B:244:GLU:CB	2.67	0.42
1:A:113:GLY:O	1:A:114:LEU:HD13	2.19	0.42
1:A:117:ILE:CG2	1:A:125:LEU:CD1	2.98	0.42
1:B:63:VAL:O	1:B:67:LEU:HG	2.19	0.42
1:A:180:THR:HG23	1:A:181:GLY:O	2.20	0.42
1:A:81:TYR:CD2	1:A:129:HIS:HB3	2.54	0.42
1:A:285:LEU:HD22	1:A:289:LEU:CD1	2.50	0.42
1:B:155:TYR:CD1	1:B:190:VAL:HG22	2.55	0.42
1:B:207:TYR:O	1:B:210:GLN:HB2	2.20	0.42
1:B:220:THR:CG2	1:B:221:ALA:N	2.83	0.42
1:B:7:VAL:HG11	1:B:24:LEU:CD2	2.46	0.41
1:B:112:SER:HA	1:B:150:VAL:O	2.20	0.41
1:B:157:GLU:CG	1:B:190:VAL:HG23	2.51	0.41
1:A:115:GLU:HG3	1:A:263:PHE:CZ	2.55	0.41
1:B:126:ALA:O	1:B:127:ALA:HB3	2.20	0.41
1:A:41:LYS:CE	1:B:96:LEU:HD22	2.49	0.41
1:B:290:GLU:OE2	1:B:293:LYS:NZ	2.54	0.41
1:A:198:LEU:O	1:A:202:LYS:HG2	2.21	0.41
1:A:38:ASN:O	1:A:41:LYS:HB2	2.20	0.41
1:B:271:ASP:OD2	1:B:274:LEU:HB2	2.20	0.41
1:A:115:GLU:HB2	1:A:120:LEU:HD21	2.02	0.41
1:A:36:THR:HG22	1:A:37:ARG:N	2.36	0.41
1:B:232:THR:HG22	1:B:234:LYS:HG3	2.03	0.41
1:B:81:TYR:OH	1:B:152:LEU:HG	2.21	0.41
1:B:272:ILE:CG1	1:B:273:GLU:N	2.82	0.41
1:B:77:ILE:HD11	1:B:111:TYR:HD2	1.80	0.41
1:A:61:ASP:CG	1:A:64:ILE:HG12	2.41	0.41
1:B:36:THR:HG22	1:B:38:ASN:H	1.86	0.41
1:B:7:VAL:HG12	1:B:31:LYS:O	2.20	0.41

Continued on next page...

Continued from previous page...

Atom-1	Atom-2	Interatomic distance (Å)	Clash overlap (Å)
1:B:232:THR:HG22	1:B:234:LYS:CG	2.51	0.40
1:B:133:LYS:NZ	1:B:151:ARG:NH2	2.69	0.40
1:B:257:LEU:HD23	1:B:258:ALA:N	2.37	0.40
1:A:133:LYS:NZ	2:A:3698:NAP:H1D	2.36	0.40

There are no symmetry-related clashes.

5.3 Torsion angles

5.3.1 Protein backbone

In the following table, the Percentiles column shows the percent Ramachandran outliers of the chain as a percentile score with respect to all X-ray entries followed by that with respect to entries of similar resolution.

The Analysed column shows the number of residues for which the backbone conformation was analysed, and the total number of residues.

Mol	Chain	Analysed	Favoured	Allowed	Outliers	Percentiles	
1	A	303/306 (99%)	295 (97%)	5 (2%)	3 (1%)	17	25
1	B	273/306 (89%)	249 (91%)	13 (5%)	11 (4%)	3	2
All	All	576/612 (94%)	544 (94%)	18 (3%)	14 (2%)	6	7

All (14) Ramachandran outliers are listed below:

Mol	Chain	Res	Type
1	A	67	LEU
1	A	297	ASN
1	B	128	ALA
1	B	133	LYS
1	B	135	GLU
1	B	169	PRO
1	B	244	GLU
1	B	168	ALA
1	B	39	PRO
1	A	179	PRO
1	B	80	ASN
1	B	170	ASP
1	B	157	GLU
1	B	134	GLY

5.3.2 Protein sidechains ⓘ

In the following table, the Percentiles column shows the percent sidechain outliers of the chain as a percentile score with respect to all X-ray entries followed by that with respect to entries of similar resolution.

The Analysed column shows the number of residues for which the sidechain conformation was analysed, and the total number of residues.

Mol	Chain	Analysed	Rotameric	Outliers	Percentiles	
1	A	255/256 (100%)	230 (90%)	25 (10%)	9	13
1	B	235/256 (92%)	209 (89%)	26 (11%)	7	9
All	All	490/512 (96%)	439 (90%)	51 (10%)	8	11

All (51) residues with a non-rotameric sidechain are listed below:

Mol	Chain	Res	Type
1	A	-5	TYR
1	A	4	LYS
1	A	6	LEU
1	A	29	THR
1	A	32	VAL
1	A	65	MET
1	A	80	ASN
1	A	100	LEU
1	A	114	LEU
1	A	116	ASN
1	A	121	THR
1	A	125	LEU
1	A	141	ARG
1	A	147	MET
1	A	180	THR
1	A	196	VAL
1	A	200	LEU
1	A	201	LEU
1	A	205	GLU
1	A	208	VAL
1	A	216	THR
1	A	233	ARG
1	A	274	LEU
1	A	284	THR
1	A	285	LEU
1	B	13	THR
1	B	26	GLU

Continued on next page...

Continued from previous page...

Mol	Chain	Res	Type
1	B	37	ARG
1	B	58	ASP
1	B	60	ASP
1	B	75	THR
1	B	83	GLU
1	B	90	GLU
1	B	93	GLN
1	B	97	LEU
1	B	117	ILE
1	B	118	LYS
1	B	120	LEU
1	B	125	LEU
1	B	129	HIS
1	B	133	LYS
1	B	147	MET
1	B	151	ARG
1	B	162	HIS
1	B	174	TYR
1	B	175	LEU
1	B	203	MET
1	B	242	THR
1	B	257	LEU
1	B	266	LEU
1	B	269	ASP

Some sidechains can be flipped to improve hydrogen bonding and reduce clashes. All (14) such sidechains are listed below:

Mol	Chain	Res	Type
1	A	16	GLN
1	A	56	GLN
1	A	59	GLN
1	A	80	ASN
1	A	87	GLN
1	A	93	GLN
1	A	116	ASN
1	A	259	ASN
1	A	297	ASN
1	B	16	GLN
1	B	50	GLN
1	B	89	GLN
1	B	116	ASN
1	B	292	HIS

5.3.3 RNA ⓘ

There are no RNA molecules in this entry.

5.4 Non-standard residues in protein, DNA, RNA chains ⓘ

There are no non-standard protein/DNA/RNA residues in this entry.

5.5 Carbohydrates ⓘ

There are no carbohydrates in this entry.

5.6 Ligand geometry ⓘ

2 ligands are modelled in this entry.

In the following table, the Counts columns list the number of bonds (or angles) for which Mogul statistics could be retrieved, the number of bonds (or angles) that are observed in the model and the number of bonds (or angles) that are defined in the Chemical Component Dictionary. The Link column lists molecule types, if any, to which the group is linked. The Z score for a bond length (or angle) is the number of standard deviations the observed value is removed from the expected value. A bond length (or angle) with $|Z| > 2$ is considered an outlier worth inspection. RMSZ is the root-mean-square of all Z scores of the bond lengths (or angles).

Mol	Type	Chain	Res	Link	Bond lengths			Bond angles		
					Counts	RMSZ	$\# Z > 2$	Counts	RMSZ	$\# Z > 2$
3	GOL	A	2647	-	5,5,5	0.65	0	5,5,5	0.71	0
2	NAP	A	3698	-	44,52,52	1.35	5 (11%)	53,80,80	2.67	15 (28%)

In the following table, the Chirals column lists the number of chiral outliers, the number of chiral centers analysed, the number of these observed in the model and the number defined in the Chemical Component Dictionary. Similar counts are reported in the Torsion and Rings columns. '-' means no outliers of that kind were identified.

Mol	Type	Chain	Res	Link	Chirals	Torsions	Rings
3	GOL	A	2647	-	-	0/4/4/4	0/0/0/0
2	NAP	A	3698	-	-	0/27/67/67	0/5/5/5

All (5) bond length outliers are listed below:

Mol	Chain	Res	Type	Atoms	Z	Observed(Å)	Ideal(Å)
2	A	3698	NAP	C6N-N1N	2.61	1.42	1.35
2	A	3698	NAP	C4A-N3A	2.66	1.39	1.35

Continued on next page...

Continued from previous page...

Mol	Chain	Res	Type	Atoms	Z	Observed(Å)	Ideal(Å)
2	A	3698	NAP	O4B-C1B	3.23	1.45	1.41
2	A	3698	NAP	C2A-N3A	3.67	1.38	1.32
2	A	3698	NAP	C4N-C3N	3.68	1.45	1.39

All (15) bond angle outliers are listed below:

Mol	Chain	Res	Type	Atoms	Z	Observed(°)	Ideal(°)
2	A	3698	NAP	O3X-P2B-O1X	-6.70	84.44	110.60
2	A	3698	NAP	C4B-O4B-C1B	-6.38	103.18	109.83
2	A	3698	NAP	O5D-PN-O1N	-5.86	86.19	109.07
2	A	3698	NAP	O3X-P2B-O2B	-5.47	81.50	105.99
2	A	3698	NAP	O2N-PN-O5D	-5.29	83.15	107.75
2	A	3698	NAP	O3X-P2B-O2X	-5.11	87.36	107.59
2	A	3698	NAP	N3A-C2A-N1A	-4.04	125.41	128.86
2	A	3698	NAP	O4B-C1B-C2B	-2.04	103.05	106.60
2	A	3698	NAP	C2A-N1A-C6A	2.14	122.39	118.75
2	A	3698	NAP	O2A-PA-O1A	2.91	126.91	112.14
2	A	3698	NAP	O2N-PN-O1N	2.94	127.10	112.14
2	A	3698	NAP	O2B-P2B-O1X	3.45	122.71	109.39
2	A	3698	NAP	O2X-P2B-O1X	3.62	124.74	110.60
2	A	3698	NAP	PN-O3-PA	4.27	146.97	132.63
2	A	3698	NAP	O4B-C4B-C5B	6.12	129.76	109.39

There are no chirality outliers.

There are no torsion outliers.

There are no ring outliers.

2 monomers are involved in 9 short contacts:

Mol	Chain	Res	Type	Clashes	Symm-Clashes
3	A	2647	GOL	1	0
2	A	3698	NAP	9	0

5.7 Other polymers [i](#)

There are no such residues in this entry.

5.8 Polymer linkage issues [i](#)

There are no chain breaks in this entry.

6 Fit of model and data [i](#)

6.1 Protein, DNA and RNA chains [i](#)

In the following table, the column labelled ‘#RSRZ> 2’ contains the number (and percentage) of RSRZ outliers, followed by percent RSRZ outliers for the chain as percentile scores relative to all X-ray entries and entries of similar resolution. The OWAB column contains the minimum, median, 95th percentile and maximum values of the occupancy-weighted average B-factor per residue. The column labelled ‘Q< 0.9’ lists the number of (and percentage) of residues with an average occupancy less than 0.9.

Mol	Chain	Analysed	<RSRZ>	#RSRZ>2	OWAB(Å ²)	Q<0.9
1	A	305/306 (99%)	-0.13	0 100 100	10, 23, 40, 54	0
1	B	279/306 (91%)	0.23	11 (3%) 39 38	14, 33, 61, 77	0
All	All	584/612 (95%)	0.04	11 (1%) 66 64	10, 28, 54, 77	0

All (11) RSRZ outliers are listed below:

Mol	Chain	Res	Type	RSRZ
1	B	130	PHE	6.3
1	B	174	TYR	4.1
1	B	81	TYR	4.0
1	B	131	ASP	3.5
1	B	246	TYR	3.4
1	B	168	ALA	3.2
1	B	38	ASN	3.1
1	B	133	LYS	2.3
1	B	175	LEU	2.3
1	B	129	HIS	2.2
1	B	132	GLY	2.1

6.2 Non-standard residues in protein, DNA, RNA chains [i](#)

There are no non-standard protein/DNA/RNA residues in this entry.

6.3 Carbohydrates [i](#)

There are no carbohydrates in this entry.

6.4 Ligands [i](#)

In the following table, the Atoms column lists the number of modelled atoms in the group and the number defined in the chemical component dictionary. The B-factors column lists the minimum, median, 95th percentile and maximum values of B factors of atoms in the group. The column labelled 'Q< 0.9' lists the number of atoms with occupancy less than 0.9.

Mol	Type	Chain	Res	Atoms	RSCC	RSR	B-factors(\AA^2)	Q<0.9
3	GOL	A	2647	6/6	0.88	0.19	20,27,29,30	0
2	NAP	A	3698	48/48	0.95	0.17	14,26,32,37	0

6.5 Other polymers [i](#)

There are no such residues in this entry.