



Full wwPDB X-ray Structure Validation Report ⓘ

Mar 9, 2018 – 04:45 pm GMT

PDB ID : 5F4L
Title : HIV-1 gp120 complex with JP-III-048
Authors : Liang, S.; Hendrickson, W.A.
Deposited on : 2015-12-03
Resolution : 2.70 Å(reported)

This is a Full wwPDB X-ray Structure Validation Report for a publicly released PDB entry.

We welcome your comments at validation@mail.wwpdb.org

A user guide is available at

<https://www.wwpdb.org/validation/2017/XrayValidationReportHelp>

with specific help available everywhere you see the ⓘ symbol.

The following versions of software and data (see [references ⓘ](#)) were used in the production of this report:

MolProbity : 4.02b-467
Mogul : 1.7.3 (157068), CSD as539be (2018)
Xtriage (Phenix) : 1.13
EDS : trunk30967
Percentile statistics : 20171227.v01 (using entries in the PDB archive December 27th 2017)
Refmac : 5.8.0158
CCP4 : 7.0 (Gargrove)
Ideal geometry (proteins) : Engh & Huber (2001)
Ideal geometry (DNA, RNA) : Parkinson et al. (1996)
Validation Pipeline (wwPDB-VP) : trunk30967

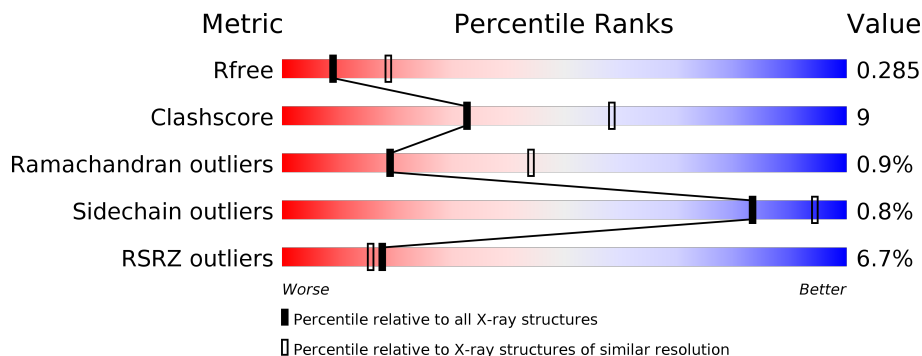
1 Overall quality at a glance

The following experimental techniques were used to determine the structure:

X-RAY DIFFRACTION

The reported resolution of this entry is 2.70 Å.

Percentile scores (ranging between 0-100) for global validation metrics of the entry are shown in the following graphic. The table shows the number of entries on which the scores are based.



Metric	Whole archive (#Entries)	Similar resolution (#Entries, resolution range(Å))
R_{free}	111664	2449 (2.70-2.70)
Clashscore	122126	2756 (2.70-2.70)
Ramachandran outliers	120053	2716 (2.70-2.70)
Sidechain outliers	120020	2716 (2.70-2.70)
RSRZ outliers	108989	2376 (2.70-2.70)

The table below summarises the geometric issues observed across the polymeric chains and their fit to the electron density. The red, orange, yellow and green segments on the lower bar indicate the fraction of residues that contain outliers for ≥ 3 , 2, 1 and 0 types of geometric quality criteria. A grey segment represents the fraction of residues that are not modelled. The numeric value for each fraction is indicated below the corresponding segment, with a dot representing fractions $\leq 5\%$. The upper red bar (where present) indicates the fraction of residues that have poor fit to the electron density. The numeric value is given above the bar.

Mol	Chain	Length	Quality of chain
1	A	350	<div> <div>5%</div> <div> <div></div> <div>81%</div> <div>14%</div> <div>• •</div> </div> </div>
1	B	350	<div> <div>7%</div> <div> <div></div> <div>72%</div> <div>22%</div> <div>• •</div> </div> </div>

2 Entry composition [i](#)

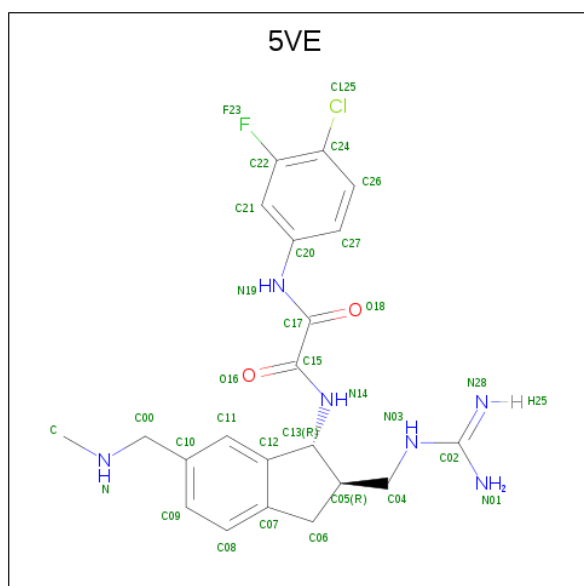
There are 3 unique types of molecules in this entry. The entry contains 5395 atoms, of which 0 are hydrogens and 0 are deuteriums.

In the tables below, the ZeroOcc column contains the number of atoms modelled with zero occupancy, the AltConf column contains the number of residues with at least one atom in alternate conformation and the Trace column contains the number of residues modelled with at most 2 atoms.

- Molecule 1 is a protein called ENVELOPE GLYCOPROTEIN GP120 of HIV-1 clade C.

Mol	Chain	Residues	Atoms					ZeroOcc	AltConf	Trace
1	A	336	Total	C	N	O	S	0	1	0
			2643	1653	463	507	20			
1	B	335	Total	C	N	O	S	0	0	0
			2627	1642	459	506	20			

- Molecule 2 is {N}'-[(1 {R},2 {R})-2-(carbamimidamidomethyl)-6-(methylaminomethyl)-2,3-dihydro-1 {H}-inden-1-yl]- {N}-(4-chloranyl-3-fluoranyl-phenyl)ethanediamide (three-letter code: 5VE) (formula: C₂₁H₂₄ClFN₆O₂).

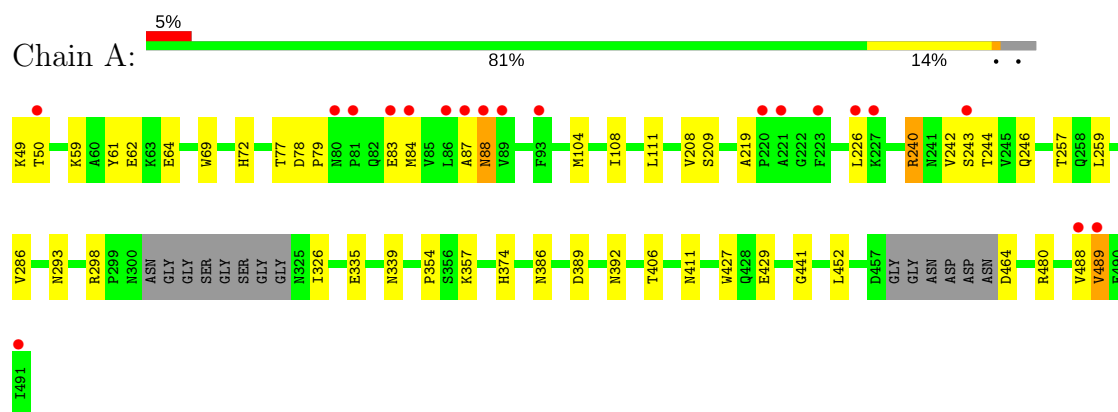


Mol	Chain	Residues	Atoms		ZeroOcc	AltConf
3	A	39	Total 39	O 39	0	0
3	B	24	Total 24	O 24	0	0

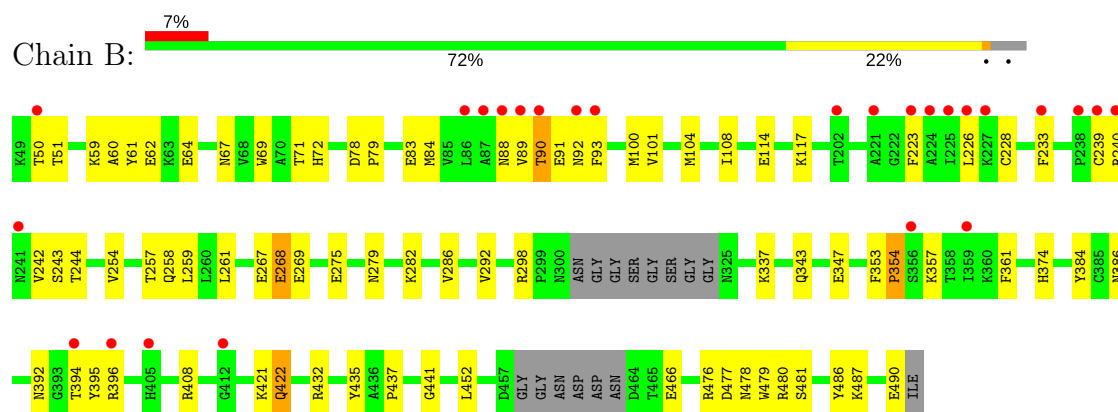
3 Residue-property plots [i](#)

These plots are drawn for all protein, RNA and DNA chains in the entry. The first graphic for a chain summarises the proportions of the various outlier classes displayed in the second graphic. The second graphic shows the sequence view annotated by issues in geometry and electron density. Residues are color-coded according to the number of geometric quality criteria for which they contain at least one outlier: green = 0, yellow = 1, orange = 2 and red = 3 or more. A red dot above a residue indicates a poor fit to the electron density ($RSRZ > 2$). Stretches of 2 or more consecutive residues without any outlier are shown as a green connector. Residues present in the sample, but not in the model, are shown in grey.

- Molecule 1: ENVELOPE GLYCOPROTEIN GP120 of HIV-1 clade C



- Molecule 1: ENVELOPE GLYCOPROTEIN GP120 of HIV-1 clade C



4 Data and refinement statistics

Property	Value	Source
Space group	C 2 2 21	Depositor
Cell constants a, b, c, α , β , γ	67.16Å 127.81Å 192.47Å 90.00° 90.00° 90.00°	Depositor
Resolution (Å)	38.44 – 2.70 48.12 – 2.70	Depositor EDS
% Data completeness (in resolution range)	99.9 (38.44-2.70) 100.0 (48.12-2.70)	Depositor EDS
R_{merge}	0.12	Depositor
R_{sym}	(Not available)	Depositor
$\langle I/\sigma(I) \rangle$ ¹	2.75 (at 2.69Å)	Xtriage
Refinement program	PHENIX 1.8.4_1496	Depositor
R, R_{free}	0.248 , 0.288 0.251 , 0.285	Depositor DCC
R_{free} test set	1135 reflections (4.89%)	wwPDB-VP
Wilson B-factor (Å ²)	57.6	Xtriage
Anisotropy	0.581	Xtriage
Bulk solvent k_{sol} (e/Å ³), B_{sol} (Å ²)	0.33 , 47.2	EDS
L-test for twinning ²	$\langle L \rangle = 0.46$, $\langle L^2 \rangle = 0.29$	Xtriage
Estimated twinning fraction	No twinning to report.	Xtriage
F_o, F_c correlation	0.91	EDS
Total number of atoms	5395	wwPDB-VP
Average B, all atoms (Å ²)	63.0	wwPDB-VP

Xtriage's analysis on translational NCS is as follows: *The largest off-origin peak in the Patterson function is 3.66% of the height of the origin peak. No significant pseudotranslation is detected.*

¹Intensities estimated from amplitudes.

²Theoretical values of $\langle |L| \rangle$, $\langle L^2 \rangle$ for acentric reflections are 0.5, 0.333 respectively for untwinned datasets, and 0.375, 0.2 for perfectly twinned datasets.

5 Model quality

5.1 Standard geometry

Bond lengths and bond angles in the following residue types are not validated in this section: 5VE

The Z score for a bond length (or angle) is the number of standard deviations the observed value is removed from the expected value. A bond length (or angle) with $|Z| > 5$ is considered an outlier worth inspection. RMSZ is the root-mean-square of all Z scores of the bond lengths (or angles).

Mol	Chain	Bond lengths		Bond angles	
		RMSZ	$\# Z > 5$	RMSZ	$\# Z > 5$
1	A	0.25	0/2701	0.46	0/3665
1	B	0.27	0/2682	0.47	0/3640
All	All	0.26	0/5383	0.46	0/7305

There are no bond length outliers.

There are no bond angle outliers.

There are no chirality outliers.

There are no planarity outliers.

5.2 Too-close contacts

In the following table, the Non-H and H(model) columns list the number of non-hydrogen atoms and hydrogen atoms in the chain respectively. The H(added) column lists the number of hydrogen atoms added and optimized by MolProbity. The Clashes column lists the number of clashes within the asymmetric unit, whereas Symm-Clashes lists symmetry related clashes.

Mol	Chain	Non-H	H(model)	H(added)	Clashes	Symm-Clashes
1	A	2643	0	2572	40	0
1	B	2627	0	2548	58	0
2	A	31	0	0	1	0
2	B	31	0	0	0	0
3	A	39	0	0	12	1
3	B	24	0	0	7	1
All	All	5395	0	5120	98	1

The all-atom clashscore is defined as the number of clashes found per 1000 atoms (including hydrogen atoms). The all-atom clashscore for this structure is 9.

All (98) close contacts within the same asymmetric unit are listed below, sorted by their clash

magnitude.

Atom-1	Atom-2	Interatomic distance (Å)	Clash overlap (Å)
1:A:339:ASN:ND2	3:A:601:HOH:O	1.89	1.05
1:B:477:ASP:O	3:B:601:HOH:O	1.87	0.90
1:A:208:VAL:O	3:A:602:HOH:O	1.91	0.88
1:A:77:THR:OG1	3:A:603:HOH:O	1.98	0.81
1:B:84:MET:HB3	1:B:244:THR:HB	1.65	0.78
1:B:481:SER:N	3:B:601:HOH:O	1.94	0.75
1:B:477:ASP:OD2	3:B:602:HOH:O	2.04	0.75
1:A:335:GLU:OE2	3:A:604:HOH:O	2.09	0.71
1:A:240:ARG:HD2	1:A:240:ARG:C	2.11	0.69
1:B:432:ARG:NH1	3:B:603:HOH:O	2.13	0.68
1:B:243:SER:OG	1:B:244:THR:N	2.26	0.66
1:B:298:ARG:NH2	1:B:441:GLY:O	2.27	0.65
1:A:411:ASN:ND2	3:A:609:HOH:O	2.28	0.65
1:A:87:ALA:HA	1:A:240:ARG:HH12	1.61	0.65
1:A:429:GLU:OE1	3:A:605:HOH:O	2.13	0.64
1:B:92:ASN:O	1:B:487:LYS:NZ	2.31	0.64
1:B:90:THR:HG23	1:B:240:ARG:CD	2.29	0.62
1:B:64:GLU:OE1	1:B:67:ASN:ND2	2.31	0.61
1:B:83:GLU:HG3	1:B:243:SER:OG	2.01	0.59
1:B:357:LYS:HD3	1:B:466:GLU:HG2	1.85	0.58
1:B:90:THR:HG23	1:B:240:ARG:HD2	1.87	0.57
1:A:480:ARG:NH2	3:A:613:HOH:O	2.37	0.57
1:B:114:GLU:O	1:B:117:LYS:NZ	2.38	0.56
1:A:386:ASN:ND2	3:A:610:HOH:O	2.34	0.56
1:B:480:ARG:N	3:B:601:HOH:O	2.39	0.56
1:B:386:ASN:ND2	3:B:607:HOH:O	2.36	0.55
1:B:361:PHE:O	1:B:392:ASN:HA	2.05	0.55
1:A:392:ASN:OD1	1:A:406:THR:OG1	2.16	0.54
1:B:422:GLN:HG2	1:B:435:TYR:O	2.07	0.54
1:A:69:TRP:CD1	1:A:72:HIS:HE1	2.25	0.54
1:B:88:ASN:C	1:B:240:ARG:HH12	2.12	0.54
1:B:286:VAL:HB	1:B:452:LEU:HB2	1.90	0.53
1:A:240:ARG:O	1:A:242:VAL:HG23	2.09	0.53
1:A:357:LYS:HZ2	1:A:464:ASP:N	2.07	0.53
1:B:394:THR:HG21	1:B:396:ARG:HH21	1.73	0.53
1:B:292:VAL:HG22	1:B:337:LYS:HG3	1.91	0.52
1:A:286:VAL:HB	1:A:452:LEU:HB2	1.91	0.52
1:B:62:GLU:HG3	1:B:64:GLU:H	1.75	0.52
1:B:93:PHE:HB2	1:B:233:PHE:CZ	2.45	0.52
1:B:267:GLU:O	1:B:268:GLU:HB2	2.11	0.51
1:B:228:CYS:HA	1:B:242:VAL:HG22	1.93	0.50

Continued on next page...

Continued from previous page...

Atom-1	Atom-2	Interatomic distance (Å)	Clash overlap (Å)
1:B:104:MET:O	1:B:108:ILE:HG12	2.11	0.50
1:B:50:THR:OG1	1:B:51:THR:N	2.44	0.50
1:A:104:MET:O	1:A:108:ILE:HG12	2.11	0.49
1:B:384:TYR:CE1	1:B:421:LYS:HB2	2.47	0.49
1:B:422:GLN:HE21	1:B:437:PRO:HA	1.76	0.49
1:A:298:ARG:NH2	1:A:441:GLY:O	2.45	0.49
1:A:49:LYS:HD2	1:A:50:THR:N	2.27	0.49
1:B:254:VAL:HG11	1:B:261:LEU:HB2	1.95	0.49
1:A:240:ARG:HD2	1:A:240:ARG:O	2.13	0.48
1:B:89:VAL:N	1:B:240:ARG:HH12	2.11	0.48
1:B:93:PHE:HB2	1:B:233:PHE:HZ	1.78	0.48
1:A:257:THR:O	1:A:259:LEU:N	2.44	0.48
1:A:50:THR:HG22	1:A:488:VAL:HG21	1.96	0.48
1:B:60:ALA:HA	1:B:71:THR:HG21	1.95	0.48
1:B:257:THR:O	1:B:259:LEU:N	2.46	0.47
1:B:223:PHE:CD1	1:B:490:GLU:HG3	2.49	0.47
1:B:343:GLN:O	1:B:347:GLU:HG3	2.15	0.47
1:B:101:VAL:HG13	1:B:479:TRP:HB2	1.95	0.47
1:B:347:GLU:HG2	1:B:395:TYR:OH	2.14	0.47
1:B:394:THR:HG21	1:B:396:ARG:NH2	2.29	0.47
1:A:62:GLU:HG3	1:A:64:GLU:H	1.78	0.47
1:B:93:PHE:CE1	1:B:239:CYS:HB3	2.50	0.47
1:B:408:ARG:N	1:B:408:ARG:HD3	2.30	0.46
1:B:476:ARG:HA	1:B:479:TRP:CD1	2.51	0.46
1:A:259:LEU:HB2	1:A:374:HIS:CE1	2.51	0.45
1:B:50:THR:HB	1:B:223:PHE:CZ	2.51	0.45
1:A:69:TRP:HA	1:A:72:HIS:ND1	2.30	0.45
1:B:59:LYS:HD2	1:B:61:TYR:CZ	2.52	0.45
1:B:223:PHE:CE1	1:B:490:GLU:HG3	2.51	0.44
1:B:50:THR:HB	1:B:223:PHE:CE1	2.53	0.44
1:A:87:ALA:CA	1:A:240:ARG:HH12	2.29	0.44
1:A:427:TRP:HB3	2:A:501:5VE:C17	2.47	0.44
1:B:478:ASN:C	3:B:601:HOH:O	2.56	0.43
1:A:226:LEU:HD21	1:A:489:VAL:HG11	2.00	0.43
1:A:69:TRP:CD1	1:A:111:LEU:HA	2.53	0.43
1:B:78:ASP:HA	1:B:79:PRO:HD2	1.81	0.43
1:A:293:ASN:ND2	3:A:608:HOH:O	2.51	0.43
1:A:298:ARG:HD2	1:A:326:ILE:O	2.19	0.43
1:A:78:ASP:HA	1:A:79:PRO:HD3	1.85	0.43
1:B:259:LEU:HB2	1:B:374:HIS:CE1	2.54	0.43
1:B:279:ASN:ND2	1:B:282:LYS:HG3	2.33	0.43

Continued on next page...

Continued from previous page...

Atom-1	Atom-2	Interatomic distance (Å)	Clash overlap (Å)
1:B:353:PHE:HA	1:B:354:PRO:HD2	1.71	0.42
1:B:422:GLN:NE2	1:B:437:PRO:HA	2.34	0.42
1:B:69:TRP:HA	1:B:72:HIS:CE1	2.55	0.42
1:B:91:GLU:HG3	1:B:226:LEU:HD23	2.01	0.42
1:A:219:ALA:O	1:A:246:GLN:NE2	2.52	0.42
1:A:83:GLU:HG2	1:A:243:SER:OG	2.20	0.42
1:A:357:LYS:O	3:A:606:HOH:O	2.22	0.41
1:A:411:ASN:ND2	3:A:619:HOH:O	2.53	0.41
1:B:422:GLN:HE21	1:B:437:PRO:CA	2.34	0.41
1:B:100:MET:HE1	1:B:486:TYR:HB2	2.03	0.41
1:B:89:VAL:N	1:B:240:ARG:NH1	2.69	0.41
1:A:84:MET:HB3	1:A:244:THR:HB	2.01	0.41
1:A:88:ASN:N	1:A:240:ARG:NH1	2.68	0.41
1:A:389:ASP:HB2	3:A:626:HOH:O	2.20	0.41
1:A:64:GLU:HA	1:A:209:SER:HB3	2.03	0.41
1:A:59:LYS:HB3	1:A:61:TYR:CE1	2.55	0.40

All (1) symmetry-related close contacts are listed below. The label for Atom-2 includes the symmetry operator and encoded unit-cell translations to be applied.

Atom-1	Atom-2	Interatomic distance (Å)	Clash overlap (Å)
3:A:633:HOH:O	3:B:622:HOH:O[5_555]	2.02	0.18

5.3 Torsion angles ⓘ

5.3.1 Protein backbone ⓘ

In the following table, the Percentiles column shows the percent Ramachandran outliers of the chain as a percentile score with respect to all X-ray entries followed by that with respect to entries of similar resolution.

The Analysed column shows the number of residues for which the backbone conformation was analysed, and the total number of residues.

Mol	Chain	Analysed	Favoured	Allowed	Outliers	Percentiles	
1	A	331/350 (95%)	315 (95%)	14 (4%)	2 (1%)	27	54
1	B	329/350 (94%)	307 (93%)	18 (6%)	4 (1%)	14	35
All	All	660/700 (94%)	622 (94%)	32 (5%)	6 (1%)	19	44

All (6) Ramachandran outliers are listed below:

Mol	Chain	Res	Type
1	B	354	PRO
1	A	354	PRO
1	B	269	GLU
1	A	88	ASN
1	B	268	GLU
1	B	258	GLN

5.3.2 Protein sidechains ⓘ

In the following table, the Percentiles column shows the percent sidechain outliers of the chain as a percentile score with respect to all X-ray entries followed by that with respect to entries of similar resolution.

The Analysed column shows the number of residues for which the sidechain conformation was analysed, and the total number of residues.

Mol	Chain	Analysed	Rotameric	Outliers	Percentiles	
1	A	299/305 (98%)	297 (99%)	2 (1%)	85	95
1	B	297/305 (97%)	294 (99%)	3 (1%)	78	92
All	All	596/610 (98%)	591 (99%)	5 (1%)	83	94

All (5) residues with a non-rotameric sidechain are listed below:

Mol	Chain	Res	Type
1	A	240	ARG
1	A	489	VAL
1	B	90	THR
1	B	275	GLU
1	B	422	GLN

Some sidechains can be flipped to improve hydrogen bonding and reduce clashes. All (1) such sidechains are listed below:

Mol	Chain	Res	Type
1	B	422	GLN

5.3.3 RNA ⓘ

There are no RNA molecules in this entry.

5.4 Non-standard residues in protein, DNA, RNA chains [i](#)

There are no non-standard protein/DNA/RNA residues in this entry.

5.5 Carbohydrates [i](#)

There are no carbohydrates in this entry.

5.6 Ligand geometry [i](#)

2 ligands are modelled in this entry.

In the following table, the Counts columns list the number of bonds (or angles) for which Mogul statistics could be retrieved, the number of bonds (or angles) that are observed in the model and the number of bonds (or angles) that are defined in the Chemical Component Dictionary. The Link column lists molecule types, if any, to which the group is linked. The Z score for a bond length (or angle) is the number of standard deviations the observed value is removed from the expected value. A bond length (or angle) with $|Z| > 2$ is considered an outlier worth inspection. RMSZ is the root-mean-square of all Z scores of the bond lengths (or angles).

Mol	Type	Chain	Res	Link	Bond lengths			Bond angles		
					Counts	RMSZ	$\# Z > 2$	Counts	RMSZ	$\# Z > 2$
2	5VE	A	501	-	33,33,33	2.59	11 (33%)	40,46,46	1.72	6 (15%)
2	5VE	B	501	-	33,33,33	2.60	12 (36%)	40,46,46	1.78	6 (15%)

In the following table, the Chirals column lists the number of chiral outliers, the number of chiral centers analysed, the number of these observed in the model and the number defined in the Chemical Component Dictionary. Similar counts are reported in the Torsion and Rings columns. '-' means no outliers of that kind were identified.

Mol	Type	Chain	Res	Link	Chirals	Torsions	Rings
2	5VE	A	501	-	-	0/19/32/32	0/3/3/3
2	5VE	B	501	-	-	0/19/32/32	0/3/3/3

All (23) bond length outliers are listed below:

Mol	Chain	Res	Type	Atoms	Z	Observed(Å)	Ideal(Å)
2	B	501	5VE	C00-N	-5.88	1.38	1.46
2	A	501	5VE	C00-N	-5.83	1.38	1.46
2	A	501	5VE	C06-C05	-4.12	1.46	1.53
2	B	501	5VE	C06-C05	-4.10	1.46	1.53
2	A	501	5VE	C13-N14	-3.07	1.40	1.46
2	B	501	5VE	C13-N14	-3.00	1.40	1.46

Continued on next page...

Continued from previous page...

Mol	Chain	Res	Type	Atoms	Z	Observed(Å)	Ideal(Å)
2	B	501	5VE	C02-N01	-2.01	1.26	1.34
2	B	501	5VE	C09-C08	2.24	1.42	1.38
2	B	501	5VE	C27-C20	2.27	1.43	1.39
2	A	501	5VE	C09-C08	2.28	1.42	1.38
2	A	501	5VE	C27-C20	2.35	1.43	1.39
2	A	501	5VE	C24-C22	2.68	1.42	1.38
2	B	501	5VE	C24-C22	2.72	1.42	1.38
2	B	501	5VE	C21-C22	2.82	1.42	1.37
2	A	501	5VE	C21-C22	2.82	1.42	1.37
2	A	501	5VE	C00-C10	4.13	1.60	1.51
2	B	501	5VE	C00-C10	4.22	1.60	1.51
2	A	501	5VE	C17-N19	4.71	1.46	1.35
2	B	501	5VE	C17-N19	4.72	1.46	1.35
2	A	501	5VE	C15-N14	5.40	1.45	1.34
2	B	501	5VE	C15-N14	5.45	1.45	1.34
2	B	501	5VE	C02-N03	6.93	1.46	1.33
2	A	501	5VE	C02-N03	6.98	1.47	1.33

All (12) bond angle outliers are listed below:

Mol	Chain	Res	Type	Atoms	Z	Observed(°)	Ideal(°)
2	A	501	5VE	C12-C13-N14	-3.48	109.28	114.55
2	A	501	5VE	C12-C11-C10	-2.90	119.15	121.98
2	B	501	5VE	C12-C11-C10	-2.86	119.19	121.98
2	B	501	5VE	C20-N19-C17	-2.62	122.99	127.53
2	B	501	5VE	C12-C13-N14	-2.51	110.74	114.55
2	B	501	5VE	C06-C07-C12	-2.44	108.24	111.01
2	A	501	5VE	C06-C07-C12	-2.36	108.33	111.01
2	A	501	5VE	C20-N19-C17	-2.03	124.02	127.53
2	A	501	5VE	C15-C17-N19	4.17	119.17	112.28
2	B	501	5VE	C15-C17-N19	4.26	119.31	112.28
2	A	501	5VE	C17-C15-N14	6.42	119.34	113.31
2	B	501	5VE	C17-C15-N14	7.00	119.89	113.31

There are no chirality outliers.

There are no torsion outliers.

There are no ring outliers.

1 monomer is involved in 1 short contact:

Mol	Chain	Res	Type	Clashes	Symm-Clashes
2	A	501	5VE	1	0

5.7 Other polymers [i](#)

There are no such residues in this entry.

5.8 Polymer linkage issues [i](#)

There are no chain breaks in this entry.

6 Fit of model and data

6.1 Protein, DNA and RNA chains

In the following table, the column labelled ‘#RSRZ > 2’ contains the number (and percentage) of RSRZ outliers, followed by percent RSRZ outliers for the chain as percentile scores relative to all X-ray entries and entries of similar resolution. The OWAB column contains the minimum, median, 95th percentile and maximum values of the occupancy-weighted average B-factor per residue. The column labelled ‘Q < 0.9’ lists the number of (and percentage) of residues with an average occupancy less than 0.9.

Mol	Chain	Analysed	<RSRZ>	#RSRZ>2	OWAB(Å ²)	Q<0.9
1	A	336/350 (96%)	0.29	19 (5%) 24 22	29, 53, 93, 120	0
1	B	335/350 (95%)	0.58	26 (7%) 13 11	42, 68, 98, 130	0
All	All	671/700 (95%)	0.43	45 (6%) 18 16	29, 61, 96, 130	0

All (45) RSRZ outliers are listed below:

Mol	Chain	Res	Type	RSRZ
1	B	88	ASN	8.2
1	B	89	VAL	7.5
1	B	87	ALA	6.9
1	A	491	ILE	4.9
1	B	86	LEU	4.7
1	A	86	LEU	4.5
1	B	90	THR	4.4
1	B	239	CYS	3.9
1	A	88	ASN	3.8
1	A	87	ALA	3.8
1	A	489	VAL	3.6
1	B	93	PHE	3.3
1	A	223	PHE	3.1
1	A	84	MET	3.1
1	B	226	LEU	3.1
1	A	81	PRO	3.1
1	A	488	VAL	3.1
1	A	89	VAL	3.0
1	A	226	LEU	2.9
1	B	241	ASN	2.8
1	A	220	PRO	2.8
1	A	227	LYS	2.7
1	B	50	THR	2.7
1	A	80	ASN	2.7

Continued on next page...

Continued from previous page...

Mol	Chain	Res	Type	RSRZ
1	B	227	LYS	2.6
1	B	223	PHE	2.6
1	B	221	ALA	2.5
1	B	359	ILE	2.5
1	B	92	ASN	2.5
1	B	240	ARG	2.5
1	B	356	SER	2.5
1	B	224	ALA	2.4
1	B	394	THR	2.4
1	A	93	PHE	2.3
1	A	243	SER	2.2
1	A	221	ALA	2.2
1	A	50	THR	2.2
1	B	202	THR	2.2
1	B	412	GLY	2.1
1	B	233	PHE	2.1
1	B	225	ILE	2.1
1	B	396	ARG	2.1
1	A	83	GLU	2.1
1	B	238	PRO	2.0
1	B	405	HIS	2.0

6.2 Non-standard residues in protein, DNA, RNA chains ⓘ

There are no non-standard protein/DNA/RNA residues in this entry.

6.3 Carbohydrates ⓘ

There are no carbohydrates in this entry.

6.4 Ligands ⓘ

In the following table, the Atoms column lists the number of modelled atoms in the group and the number defined in the chemical component dictionary. The B-factors column lists the minimum, median, 95th percentile and maximum values of B factors of atoms in the group. The column labelled 'Q< 0.9' lists the number of atoms with occupancy less than 0.9.

Mol	Type	Chain	Res	Atoms	RSCC	RSR	B-factors(\AA^2)	Q<0.9
2	5VE	A	501	31/31	0.86	0.25	41,49,60,82	0
2	5VE	B	501	31/31	0.91	0.19	42,53,73,74	0

6.5 Other polymers [i](#)

There are no such residues in this entry.