



Full wwPDB X-ray Structure Validation Report ⓘ

Mar 8, 2018 – 08:17 pm GMT

PDB ID : 4F6T
Title : The crystal structure of the molybdenum storage protein (MoSto) from Azotobacter vinelandii loaded with various polyoxometalates
Authors : Kowalewski, B.; Poppe, J.; Schneider, K.; Demmer, U.; Warkentin, E.; Ermler, U.
Deposited on : 2012-05-15
Resolution : 1.60 Å(reported)

This is a Full wwPDB X-ray Structure Validation Report for a publicly released PDB entry.

We welcome your comments at validation@mail.wwpdb.org

A user guide is available at

<https://www.wwpdb.org/validation/2017/XrayValidationReportHelp>

with specific help available everywhere you see the ⓘ symbol.

The following versions of software and data (see [references ⓘ](#)) were used in the production of this report:

MolProbity : 4.02b-467
Mogul : 1.7.3 (157068), CSD as539be (2018)
Xtriage (Phenix) : 1.13
EDS : trunk30967
Percentile statistics : 20171227.v01 (using entries in the PDB archive December 27th 2017)
Refmac : 5.8.0158
CCP4 : 7.0 (Gargrove)
Ideal geometry (proteins) : Engh & Huber (2001)
Ideal geometry (DNA, RNA) : Parkinson et al. (1996)
Validation Pipeline (wwPDB-VP) : trunk30967

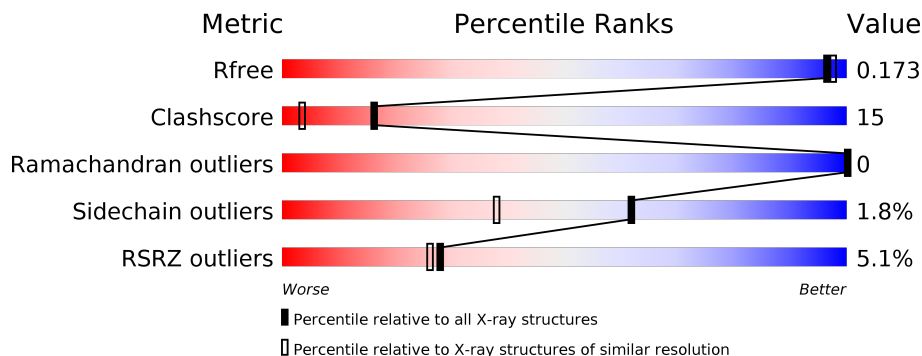
1 Overall quality at a glance

The following experimental techniques were used to determine the structure:

X-RAY DIFFRACTION

The reported resolution of this entry is 1.60 Å.

Percentile scores (ranging between 0-100) for global validation metrics of the entry are shown in the following graphic. The table shows the number of entries on which the scores are based.



Metric	Whole archive (#Entries)	Similar resolution (#Entries, resolution range(Å))
R_{free}	111664	2957 (1.60-1.60)
Clashscore	122126	3202 (1.60-1.60)
Ramachandran outliers	120053	3117 (1.60-1.60)
Sidechain outliers	120020	3116 (1.60-1.60)
RSRZ outliers	108989	2883 (1.60-1.60)

The table below summarises the geometric issues observed across the polymeric chains and their fit to the electron density. The red, orange, yellow and green segments on the lower bar indicate the fraction of residues that contain outliers for ≥ 3 , 2, 1 and 0 types of geometric quality criteria. A grey segment represents the fraction of residues that are not modelled. The numeric value for each fraction is indicated below the corresponding segment, with a dot representing fractions $\leq 5\%$. The upper red bar (where present) indicates the fraction of residues that have poor fit to the electron density. The numeric value is given above the bar.

Mol	Chain	Length	Quality of chain
1	B	268	<div> <div>7%</div> <div>81%</div> <div>16%</div> <div>•</div> </div>
2	A	244	<div> <div>3%</div> <div>91%</div> <div>7%</div> <div>•</div> </div>

The following table lists non-polymeric compounds, carbohydrate monomers and non-standard residues in protein, DNA, RNA chains that are outliers for geometric or electron-density-fit criteria:

Mol	Type	Chain	Res	Chirality	Geometry	Clashes	Electron density
7	6M0	B	305	-	-	X	-

2 Entry composition [i](#)

There are 9 unique types of molecules in this entry. The entry contains 4609 atoms, of which 0 are hydrogens and 0 are deuteriums.

In the tables below, the ZeroOcc column contains the number of atoms modelled with zero occupancy, the AltConf column contains the number of residues with at least one atom in alternate conformation and the Trace column contains the number of residues modelled with at most 2 atoms.

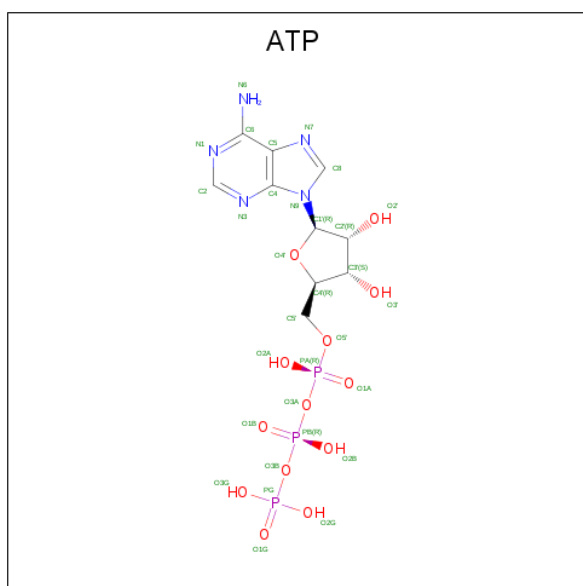
- Molecule 1 is a protein called Molybdenum storage protein subunit beta.

Mol	Chain	Residues	Atoms					ZeroOcc	AltConf	Trace
1	B	268	Total	C	N	O	S	0	13	0
			2045	1304	359	374	8			

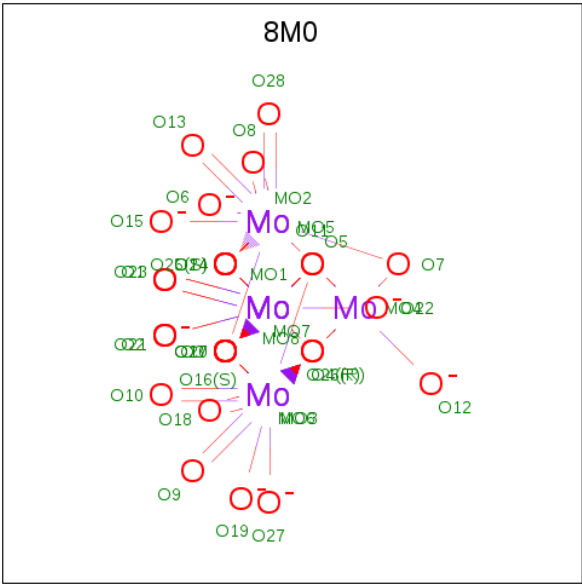
- Molecule 2 is a protein called Molybdenum storage protein subunit alpha.

Mol	Chain	Residues	Atoms					ZeroOcc	AltConf	Trace
2	A	244	Total	C	N	O	S	0	8	0
			1867	1185	349	330	3			

- Molecule 3 is ADENOSINE-5'-TRIPHOSPHATE (three-letter code: ATP) (formula: $C_{10}H_{16}N_5O_{13}P_3$).

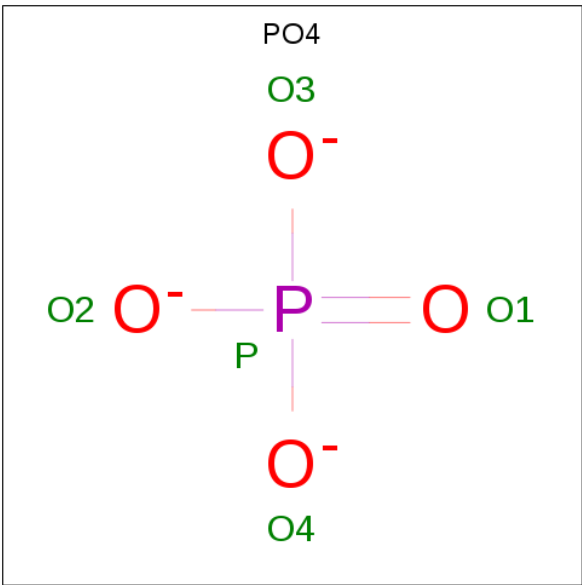


- Molecule 4 is bis(mu4-oxo)-tetrakis(mu3-oxo)-hexakis(mu2-oxo)-hexadeca-oxo-octamolybdenum (VI) (three-letter code: 8M0) (formula: Mo₈O₂₈).



Mol	Chain	Residues	Atoms			ZeroOcc	AltConf
4	B	1	Total	Mo	O	0	0
			36	8	28		
4	A	1	Total	Mo	O	0	0
			34	8	26		

- Molecule 5 is PHOSPHATE ION (three-letter code: PO4) (formula: O₄P).

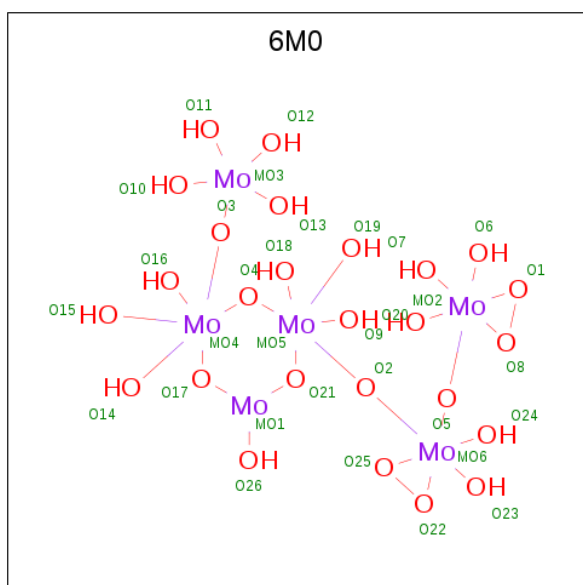


Mol	Chain	Residues	Atoms	ZeroOcc	AltConf
5	B	1	Total O P 5 4 1	0	0
5	A	1	Total P 1 1	0	0

- Molecule 6 is MAGNESIUM ION (three-letter code: MG) (formula: Mg).

Mol	Chain	Residues	Atoms	ZeroOcc	AltConf
6	B	1	Total Mg 1 1	0	0
6	A	1	Total Mg 1 1	0	0

- Molecule 7 is MO(6)-O(26) Cluster (three-letter code: 6M0) (formula: $\text{H}_{16}\text{Mo}_6\text{O}_{26}$).



Mol	Chain	Residues	Atoms	ZeroOcc	AltConf
7	B	1	Total Mo O 31 6 25	0	0

- Molecule 8 is MOLYBDENUM ATOM (three-letter code: MO) (formula: Mo).

Mol	Chain	Residues	Atoms	ZeroOcc	AltConf
8	A	1	Total Mo 1 1	0	0

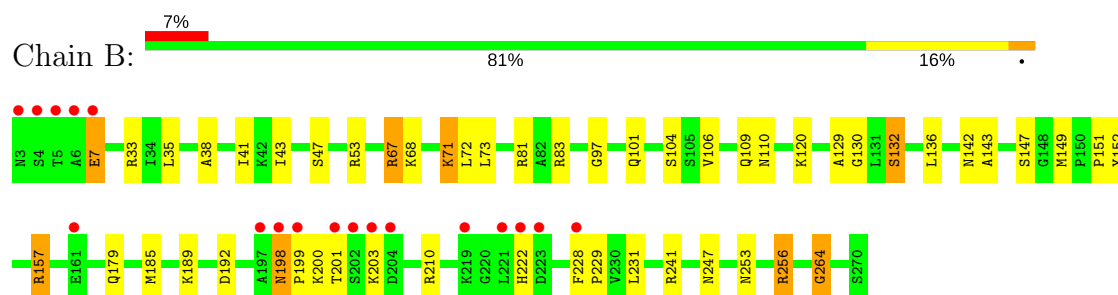
- Molecule 9 is water.

Mol	Chain	Residues	Atoms		ZeroOcc	AltConf
9	B	278	Total 278	O 278	0	0
9	A	246	Total 247	O 247	0	1

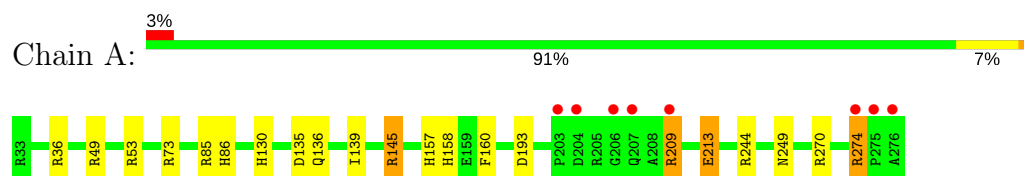
3 Residue-property plots [i](#)

These plots are drawn for all protein, RNA and DNA chains in the entry. The first graphic for a chain summarises the proportions of the various outlier classes displayed in the second graphic. The second graphic shows the sequence view annotated by issues in geometry and electron density. Residues are color-coded according to the number of geometric quality criteria for which they contain at least one outlier: green = 0, yellow = 1, orange = 2 and red = 3 or more. A red dot above a residue indicates a poor fit to the electron density ($RSRZ > 2$). Stretches of 2 or more consecutive residues without any outlier are shown as a green connector. Residues present in the sample, but not in the model, are shown in grey.

- Molecule 1: Molybdenum storage protein subunit beta



- Molecule 2: Molybdenum storage protein subunit alpha



4 Data and refinement statistics

Property	Value	Source
Space group	P 63 2 2	Depositor
Cell constants a, b, c, α , β , γ	115.74Å 115.74Å 233.62Å 90.00° 90.00° 120.00°	Depositor
Resolution (Å)	46.00 – 1.60 46.06 – 1.60	Depositor EDS
% Data completeness (in resolution range)	90.0 (46.00-1.60) 90.0 (46.06-1.60)	Depositor EDS
R_{merge}	0.09	Depositor
R_{sym}	(Not available)	Depositor
$\langle I/\sigma(I) \rangle$ ¹	2.44 (at 1.60Å)	Xtriage
Refinement program	REFMAC	Depositor
R, R_{free}	0.139 , 0.173 0.140 , 0.173	Depositor DCC
R_{free} test set	5467 reflections (4.99%)	wwPDB-VP
Wilson B-factor (Å ²)	14.2	Xtriage
Anisotropy	0.355	Xtriage
Bulk solvent k_{sol} (e/Å ³), B_{sol} (Å ²)	0.40 , 59.5	EDS
L-test for twinning ²	$\langle L \rangle = 0.49$, $\langle L^2 \rangle = 0.32$	Xtriage
Estimated twinning fraction	No twinning to report.	Xtriage
F_o, F_c correlation	0.96	EDS
Total number of atoms	4609	wwPDB-VP
Average B, all atoms (Å ²)	22.0	wwPDB-VP

Xtriage's analysis on translational NCS is as follows: *The largest off-origin peak in the Patterson function is 3.81% of the height of the origin peak. No significant pseudotranslation is detected.*

¹Intensities estimated from amplitudes.

²Theoretical values of $\langle |L| \rangle$, $\langle L^2 \rangle$ for acentric reflections are 0.5, 0.333 respectively for untwinned datasets, and 0.375, 0.2 for perfectly twinned datasets.

5 Model quality [i](#)

5.1 Standard geometry [i](#)

Bond lengths and bond angles in the following residue types are not validated in this section: MG, PO4, ATP, 8M0, MO, 6M0

The Z score for a bond length (or angle) is the number of standard deviations the observed value is removed from the expected value. A bond length (or angle) with $|Z| > 5$ is considered an outlier worth inspection. RMSZ is the root-mean-square of all Z scores of the bond lengths (or angles).

Mol	Chain	Bond lengths		Bond angles	
		RMSZ	$\# Z > 5$	RMSZ	$\# Z > 5$
1	B	1.36	8/2121 (0.4%)	1.12	12/2878 (0.4%)
2	A	1.35	2/1931 (0.1%)	1.06	8/2630 (0.3%)
All	All	1.35	10/4052 (0.2%)	1.09	20/5508 (0.4%)

All (10) bond length outliers are listed below:

Mol	Chain	Res	Type	Atoms	Z	Observed(Å)	Ideal(Å)
1	B	47	SER	CB-OG	-9.58	1.29	1.42
1	B	152	TYR	CE1-CZ	6.37	1.46	1.38
1	B	7	GLU	CG-CD	6.07	1.61	1.51
2	A	213	GLU	CD-OE1	5.89	1.32	1.25
1	B	132[A]	SER	C-O	5.78	1.34	1.23
1	B	132[B]	SER	C-O	5.78	1.34	1.23
1	B	241	ARG	CZ-NH1	5.30	1.40	1.33
1	B	264	GLY	C-O	5.26	1.32	1.23
1	B	185	MET	CB-CG	5.12	1.67	1.51
2	A	73	ARG	CZ-NH1	5.01	1.39	1.33

All (20) bond angle outliers are listed below:

Mol	Chain	Res	Type	Atoms	Z	Observed(°)	Ideal(°)
1	B	33	ARG	NE-CZ-NH2	-12.99	113.80	120.30
1	B	33	ARG	NE-CZ-NH1	8.95	124.77	120.30
2	A	49	ARG	NE-CZ-NH2	-8.80	115.90	120.30
1	B	53	ARG	NE-CZ-NH2	-8.47	116.06	120.30
1	B	53	ARG	NE-CZ-NH1	8.41	124.50	120.30
2	A	53	ARG	NE-CZ-NH2	-8.08	116.26	120.30
1	B	256[A]	ARG	NE-CZ-NH2	-7.85	116.38	120.30
1	B	256[B]	ARG	NE-CZ-NH2	-7.85	116.38	120.30
1	B	241	ARG	NE-CZ-NH1	-6.96	116.82	120.30

Continued on next page...

Continued from previous page...

Mol	Chain	Res	Type	Atoms	Z	Observed(°)	Ideal(°)
2	A	73	ARG	NE-CZ-NH1	6.26	123.43	120.30
1	B	157[A]	ARG	NE-CZ-NH1	-6.22	117.19	120.30
1	B	157[B]	ARG	NE-CZ-NH1	-6.22	117.19	120.30
2	A	49	ARG	NE-CZ-NH1	6.00	123.30	120.30
1	B	210[A]	ARG	NE-CZ-NH1	5.95	123.27	120.30
1	B	210[B]	ARG	NE-CZ-NH1	5.95	123.27	120.30
2	A	135	ASP	CB-CG-OD2	5.64	123.38	118.30
2	A	145	ARG	NE-CZ-NH2	-5.24	117.68	120.30
2	A	160	PHE	CB-CG-CD2	5.15	124.40	120.80
2	A	85	ARG	NE-CZ-NH2	-5.05	117.77	120.30
1	B	71	LYS	CD-CE-NZ	-5.04	100.10	111.70

There are no chirality outliers.

There are no planarity outliers.

5.2 Too-close contacts ⓘ

In the following table, the Non-H and H(model) columns list the number of non-hydrogen atoms and hydrogen atoms in the chain respectively. The H(added) column lists the number of hydrogen atoms added and optimized by MolProbity. The Clashes column lists the number of clashes within the asymmetric unit, whereas Symm-Clashes lists symmetry related clashes.

Mol	Chain	Non-H	H(model)	H(added)	Clashes	Symm-Clashes
1	B	2045	0	2150	49	1
2	A	1867	0	1938	16	1
3	A	31	0	12	0	0
3	B	31	0	12	1	0
4	A	34	0	0	1	0
4	B	36	0	0	4	0
5	A	1	0	0	0	0
5	B	5	0	0	0	0
6	A	1	0	0	0	0
6	B	1	0	0	0	0
7	B	31	0	0	60	0
8	A	1	0	0	0	0
9	A	247	0	0	6	1
9	B	278	0	0	19	2
All	All	4609	0	4112	125	3

The all-atom clashscore is defined as the number of clashes found per 1000 atoms (including hydrogen atoms). The all-atom clashscore for this structure is 15.

All (125) close contacts within the same asymmetric unit are listed below, sorted by their clash magnitude.

Atom-1	Atom-2	Interatomic distance (Å)	Clash overlap (Å)
7:B:305:6M0:O8	7:B:305:6M0:O1	1.75	1.04
7:B:305:6M0:MO5	7:B:305:6M0:O20	1.28	1.03
7:B:305:6M0:MO4	7:B:305:6M0:O15	1.27	1.01
7:B:305:6M0:O17	7:B:305:6M0:MO4	1.30	1.00
7:B:305:6M0:O25	7:B:305:6M0:O22	1.80	0.99
7:B:305:6M0:MO5	7:B:305:6M0:O21	1.32	0.99
7:B:305:6M0:O2	7:B:305:6M0:O22	1.82	0.98
7:B:305:6M0:O5	7:B:305:6M0:O8	1.82	0.97
7:B:305:6M0:O12	7:B:305:6M0:MO3	1.33	0.97
7:B:305:6M0:O13	7:B:305:6M0:MO3	1.34	0.96
7:B:305:6M0:MO2	7:B:305:6M0:O8	1.37	0.95
1:B:149:MET:HE3	9:B:614:HOH:O	1.66	0.94
1:B:149:MET:HE1	9:B:604:HOH:O	1.66	0.93
3:B:301:ATP:O3G	9:B:557:HOH:O	1.87	0.92
7:B:305:6M0:O6	9:B:612:HOH:O	1.89	0.91
7:B:305:6M0:O17	7:B:305:6M0:O14	1.88	0.89
7:B:305:6M0:MO6	7:B:305:6M0:O24	1.42	0.88
7:B:305:6M0:MO2	7:B:305:6M0:O9	1.46	0.86
7:B:305:6M0:MO6	7:B:305:6M0:O25	1.47	0.84
1:B:35[A]:LEU:HD11	1:B:130:GLY:O	1.80	0.82
7:B:305:6M0:O23	7:B:305:6M0:O25	1.98	0.81
7:B:305:6M0:O2	7:B:305:6M0:O21	2.00	0.79
7:B:305:6M0:O21	7:B:305:6M0:O18	2.01	0.78
7:B:305:6M0:O2	7:B:305:6M0:O25	2.02	0.78
7:B:305:6M0:O23	7:B:305:6M0:O5	2.01	0.78
4:B:302:8M0:O8	2:A:158:HIS:HD2	1.70	0.74
1:B:149:MET:HE1	9:B:601:HOH:O	1.87	0.73
7:B:305:6M0:O7	9:B:518:HOH:O	2.07	0.72
7:B:305:6M0:MO6	7:B:305:6M0:O23	1.61	0.72
7:B:305:6M0:O7	7:B:305:6M0:O8	2.08	0.72
7:B:305:6M0:O13	7:B:305:6M0:O1	2.08	0.71
2:A:209[B]:ARG:NH2	9:A:638:HOH:O	2.19	0.71
7:B:305:6M0:O5	7:B:305:6M0:O6	2.10	0.70
1:B:222:HIS:HD2	1:B:231:LEU:HD12	1.56	0.70
7:B:305:6M0:O17	7:B:305:6M0:O3	2.10	0.69
1:B:71:LYS:HG2	1:B:142:ASN:HD21	1.58	0.69
7:B:305:6M0:O13	7:B:305:6M0:O10	2.11	0.69
1:B:228:PHE:CD2	1:B:229:PRO:HD3	2.28	0.69
7:B:305:6M0:MO5	7:B:305:6M0:O18	1.64	0.68
7:B:305:6M0:O12	7:B:305:6M0:O3	2.11	0.68

Continued on next page...

Continued from previous page...

Atom-1	Atom-2	Interatomic distance (Å)	Clash overlap (Å)
7:B:305:6M0:MO6	7:B:305:6M0:O22	1.65	0.68
7:B:305:6M0:O5	7:B:305:6M0:O25	2.13	0.67
7:B:305:6M0:O11	9:B:518:HOH:O	2.13	0.66
1:B:81:ARG:HE	1:B:109:GLN:HE22	1.41	0.66
7:B:305:6M0:O17	7:B:305:6M0:O16	2.14	0.66
1:B:201:THR:HG22	1:B:201:THR:O	1.96	0.65
7:B:305:6M0:O8	7:B:305:6M0:O6	2.13	0.65
7:B:305:6M0:O5	7:B:305:6M0:MO2	1.68	0.65
1:B:149:MET:CE	9:B:604:HOH:O	2.31	0.64
7:B:305:6M0:MO6	7:B:305:6M0:O5	1.69	0.64
7:B:305:6M0:O3	7:B:305:6M0:O15	2.15	0.64
4:B:302:8M0:O9	7:B:305:6M0:MO1	1.69	0.64
7:B:305:6M0:O4	7:B:305:6M0:O21	2.15	0.64
7:B:305:6M0:O4	7:B:305:6M0:MO4	1.69	0.63
1:B:41[B]:ILE:HD11	1:B:43:ILE:HD11	1.81	0.63
2:A:274:ARG:HH21	2:A:274:ARG:HB2	1.65	0.62
2:A:244[B]:ARG:CZ	9:A:507:HOH:O	2.47	0.62
7:B:305:6M0:O3	7:B:305:6M0:MO4	1.69	0.62
7:B:305:6M0:O20	7:B:305:6M0:O18	2.18	0.61
7:B:305:6M0:O19	7:B:305:6M0:O22	2.18	0.61
1:B:67:ARG:HE	1:B:68[B]:LYS:NZ	1.98	0.61
1:B:157[A]:ARG:CZ	9:B:478:HOH:O	2.48	0.61
9:B:583:HOH:O	2:A:86:HIS:HE1	1.84	0.60
7:B:305:6M0:O19	7:B:305:6M0:O21	2.20	0.60
1:B:68[B]:LYS:NZ	9:B:584:HOH:O	2.18	0.60
7:B:305:6M0:MO6	7:B:305:6M0:O2	1.71	0.59
2:A:145:ARG:HG2	9:A:562:HOH:O	2.02	0.59
1:B:157[B]:ARG:NH2	9:B:613:HOH:O	2.18	0.58
7:B:305:6M0:O4	7:B:305:6M0:O15	2.22	0.57
1:B:192:ASP:O	1:B:264:GLY:HA2	2.06	0.56
1:B:201:THR:CG2	1:B:201:THR:O	2.53	0.56
4:B:302:8M0:O15	2:A:157:HIS:HD2	1.89	0.55
1:B:149:MET:CE	9:B:601:HOH:O	2.48	0.55
1:B:151:PRO:HB3	4:B:302:8M0:O4	2.07	0.55
1:B:35[B]:LEU:HD21	1:B:136:LEU:HD13	1.89	0.55
1:B:189:LYS:HE2	9:B:663:HOH:O	2.07	0.55
7:B:305:6M0:O4	7:B:305:6M0:O20	2.26	0.53
7:B:305:6M0:O13	7:B:305:6M0:O3	2.27	0.53
7:B:305:6M0:O13	7:B:305:6M0:O11	2.26	0.53
1:B:71:LYS:NZ	1:B:136:LEU:O	2.42	0.53
7:B:305:6M0:O4	7:B:305:6M0:O3	2.28	0.52

Continued on next page...

Continued from previous page...

Atom-1	Atom-2	Interatomic distance (Å)	Clash overlap (Å)
1:B:97:GLY:O	1:B:101:GLN:HG3	2.10	0.52
7:B:305:6M0:O6	9:B:571:HOH:O	2.19	0.52
1:B:104:SER:HA	1:B:149:MET:HG3	1.92	0.51
1:B:81:ARG:HE	1:B:109:GLN:NE2	2.08	0.51
2:A:213:GLU:HG2	2:A:270[A]:ARG:NH1	2.26	0.51
1:B:106:VAL:HA	1:B:109:GLN:HE21	1.75	0.51
1:B:67:ARG:HE	1:B:68[B]:LYS:CE	2.24	0.50
1:B:35[A]:LEU:CD1	1:B:130:GLY:O	2.57	0.50
2:A:36:ARG:NH2	9:A:482:HOH:O	2.45	0.49
1:B:192:ASP:HA	1:B:247:ASN:HB2	1.94	0.49
2:A:193:ASP:HA	2:A:249:ASN:HB2	1.95	0.48
1:B:132[A]:SER:OG	1:B:136:LEU:CD1	2.61	0.48
7:B:305:6M0:O16	7:B:305:6M0:O3	2.31	0.48
1:B:71:LYS:HG2	1:B:142:ASN:ND2	2.26	0.48
7:B:305:6M0:O2	7:B:305:6M0:O20	2.31	0.48
1:B:179:GLN:HG2	2:A:157:HIS:HB3	1.96	0.47
1:B:73[B]:LEU:HD23	1:B:129:ALA:HB1	1.97	0.47
2:A:130:HIS:HB2	4:A:303:8M0:O21	2.15	0.46
1:B:157[A]:ARG:NH2	9:B:478:HOH:O	2.46	0.46
7:B:305:6M0:O23	7:B:305:6M0:O24	2.34	0.46
1:B:38:ALA:HB1	1:B:73[B]:LEU:CD1	2.44	0.46
1:B:72:LEU:O	1:B:143:ALA:HA	2.16	0.46
2:A:209[A]:ARG:NH2	9:A:603:HOH:O	2.47	0.46
2:A:244[B]:ARG:HG2	9:A:561:HOH:O	2.14	0.46
7:B:305:6M0:O12	7:B:305:6M0:O11	2.33	0.46
7:B:305:6M0:O5	7:B:305:6M0:O24	2.34	0.45
1:B:228:PHE:N	1:B:229:PRO:CD	2.79	0.45
1:B:256[B]:ARG:NH2	9:B:481:HOH:O	2.26	0.45
1:B:198:ASN:HD22	1:B:199:PRO:HD2	1.80	0.45
7:B:305:6M0:O12	7:B:305:6M0:O1	2.36	0.44
1:B:83:ARG:HD3	9:B:665:HOH:O	2.18	0.43
2:A:213:GLU:HG2	2:A:270[A]:ARG:HH11	1.82	0.43
1:B:228:PHE:CG	1:B:229:PRO:HD3	2.54	0.42
1:B:81:ARG:HH22	1:B:110:ASN:ND2	2.17	0.42
1:B:67:ARG:HE	1:B:68[B]:LYS:HZ2	1.67	0.42
1:B:67:ARG:NE	1:B:68[B]:LYS:HE3	2.36	0.41
2:A:139[B]:ILE:HD13	2:A:139[B]:ILE:HG21	1.87	0.41
7:B:305:6M0:O4	7:B:305:6M0:O18	2.38	0.41
1:B:222:HIS:CD2	1:B:231:LEU:HD12	2.46	0.41
1:B:198:ASN:ND2	1:B:200:LYS:H	2.19	0.40
1:B:147:SER:OG	9:B:560:HOH:O	2.22	0.40

Continued on next page...

Continued from previous page...

Atom-1	Atom-2	Interatomic distance (Å)	Clash overlap (Å)
1:B:67:ARG:HE	1:B:68[B]:LYS:HE3	1.86	0.40
7:B:305:6M0:O16	7:B:305:6M0:O15	2.39	0.40
1:B:81:ARG:HH22	1:B:110:ASN:HD21	1.69	0.40

All (3) symmetry-related close contacts are listed below. The label for Atom-2 includes the symmetry operator and encoded unit-cell translations to be applied.

Atom-1	Atom-2	Interatomic distance (Å)	Clash overlap (Å)
2:A:136[B]:GLN:NE2	9:A:639:HOH:O[2_655]	1.78	0.42
1:B:120[B]:LYS:NZ	9:B:446:HOH:O[2_655]	1.78	0.42
9:B:652:HOH:O	9:B:652:HOH:O[8_555]	2.14	0.06

5.3 Torsion angles ⓘ

5.3.1 Protein backbone ⓘ

In the following table, the Percentiles column shows the percent Ramachandran outliers of the chain as a percentile score with respect to all X-ray entries followed by that with respect to entries of similar resolution.

The Analysed column shows the number of residues for which the backbone conformation was analysed, and the total number of residues.

Mol	Chain	Analysed	Favoured	Allowed	Outliers	Percentiles	
1	B	279/268 (104%)	272 (98%)	7 (2%)	0	100	100
2	A	250/244 (102%)	245 (98%)	5 (2%)	0	100	100
All	All	529/512 (103%)	517 (98%)	12 (2%)	0	100	100

There are no Ramachandran outliers to report.

5.3.2 Protein sidechains ⓘ

In the following table, the Percentiles column shows the percent sidechain outliers of the chain as a percentile score with respect to all X-ray entries followed by that with respect to entries of similar resolution.

The Analysed column shows the number of residues for which the sidechain conformation was analysed, and the total number of residues.

Mol	Chain	Analysed	Rotameric	Outliers	Percentiles	
1	B	218/205 (106%)	213 (98%)	5 (2%)	53	27
2	A	195/187 (104%)	192 (98%)	3 (2%)	67	46
All	All	413/392 (105%)	405 (98%)	8 (2%)	62	36

All (8) residues with a non-rotameric sidechain are listed below:

Mol	Chain	Res	Type
1	B	7	GLU
1	B	67	ARG
1	B	198	ASN
1	B	203	LYS
1	B	253	ASN
2	A	209[A]	ARG
2	A	209[B]	ARG
2	A	274	ARG

Some sidechains can be flipped to improve hydrogen bonding and reduce clashes. All (10) such sidechains are listed below:

Mol	Chain	Res	Type
1	B	21	GLN
1	B	101	GLN
1	B	109	GLN
1	B	110	ASN
1	B	142	ASN
1	B	198	ASN
1	B	222	HIS
2	A	86	HIS
2	A	157	HIS
2	A	158	HIS

5.3.3 RNA ⓘ

There are no RNA molecules in this entry.

5.4 Non-standard residues in protein, DNA, RNA chains ⓘ

There are no non-standard protein/DNA/RNA residues in this entry.

5.5 Carbohydrates [i](#)

There are no carbohydrates in this entry.

5.6 Ligand geometry [i](#)

Of 10 ligands modelled in this entry, 1 is modelled with single atom and 3 are monoatomic - leaving 6 for Mogul analysis.

In the following table, the Counts columns list the number of bonds (or angles) for which Mogul statistics could be retrieved, the number of bonds (or angles) that are observed in the model and the number of bonds (or angles) that are defined in the Chemical Component Dictionary. The Link column lists molecule types, if any, to which the group is linked. The Z score for a bond length (or angle) is the number of standard deviations the observed value is removed from the expected value. A bond length (or angle) with $|Z| > 2$ is considered an outlier worth inspection. RMSZ is the root-mean-square of all Z scores of the bond lengths (or angles).

Mol	Type	Chain	Res	Link	Bond lengths			Bond angles		
					Counts	RMSZ	# Z > 2	Counts	RMSZ	# Z > 2
3	ATP	A	301	6	27,33,33	1.31	4 (14%)	27,52,52	2.36	4 (14%)
4	8M0	A	303	2,5	20,46,48	7.64	8 (40%)	0,140,150	0.00	-
3	ATP	B	301	-	27,33,33	1.03	2 (7%)	27,52,52	1.74	5 (18%)
4	8M0	B	302	6	22,48,48	8.07	12 (54%)	0,150,150	0.00	-
5	PO4	B	303	-	4,4,4	1.13	1 (25%)	6,6,6	0.61	0
7	6M0	B	305	-	2,33,34	9.77	2 (100%)	0,81,83	0.00	-

In the following table, the Chirals column lists the number of chiral outliers, the number of chiral centers analysed, the number of these observed in the model and the number defined in the Chemical Component Dictionary. Similar counts are reported in the Torsion and Rings columns. '-' means no outliers of that kind were identified.

Mol	Type	Chain	Res	Link	Chirals	Torsions	Rings
3	ATP	A	301	6	-	0/18/38/38	0/3/3/3
4	8M0	A	303	2,5	-	0/0/290/300	0/0/13/13
3	ATP	B	301	-	-	0/18/38/38	0/3/3/3
4	8M0	B	302	6	-	0/0/300/300	0/0/13/13
5	PO4	B	303	-	-	0/0/0/0	0/0/0/0
7	6M0	B	305	-	-	0/0/67/69	0/0/3/3

All (29) bond length outliers are listed below:

Mol	Chain	Res	Type	Atoms	Z	Observed(Å)	Ideal(Å)
7	B	305	6M0	O17-MO4	-9.92	1.30	1.91

Continued on next page...

Continued from previous page...

Mol	Chain	Res	Type	Atoms	Z	Observed(Å)	Ideal(Å)
7	B	305	6M0	O21-MO5	-9.61	1.32	1.91
3	A	301	ATP	PG-O3G	-2.01	1.46	1.54
3	B	301	ATP	C2-N3	2.08	1.35	1.32
5	B	303	PO4	P-O1	2.14	1.55	1.50
3	A	301	ATP	PG-O3B	2.41	1.63	1.60
3	A	301	ATP	C5-C4	2.77	1.46	1.40
3	B	301	ATP	C5-C4	2.95	1.47	1.40
4	A	303	8M0	O14-MO5	3.08	2.01	1.89
4	A	303	8M0	O1-MO1	3.26	1.74	1.68
4	B	302	8M0	O8-MO2	3.42	1.74	1.68
3	A	301	ATP	C2-N3	3.47	1.37	1.32
4	A	303	8M0	O8-MO2	3.89	1.75	1.68
4	B	302	8M0	O13-MO5	4.68	1.77	1.71
4	A	303	8M0	O13-MO5	6.53	1.81	1.67
4	B	302	8M0	O25-MO8	6.78	2.14	1.88
4	B	302	8M0	O18-MO6	6.84	1.80	1.68
4	A	303	8M0	O23-MO7	7.35	1.81	1.68
4	A	303	8M0	O18-MO6	7.49	1.81	1.68
4	B	302	8M0	O26-MO4	7.93	2.18	1.88
4	B	302	8M0	O28-MO5	8.07	1.81	1.71
4	B	302	8M0	O1-MO1	10.05	1.86	1.68
4	B	302	8M0	O23-MO7	11.00	1.88	1.68
4	B	302	8M0	O10-MO3	12.29	1.87	1.71
4	B	302	8M0	O9-MO3	15.15	1.90	1.71
4	B	302	8M0	O20-MO8	15.82	1.89	1.74
4	B	302	8M0	O7-MO4	17.85	1.91	1.74
4	A	303	8M0	O7-MO4	21.23	1.95	1.74
4	A	303	8M0	O20-MO8	22.87	1.96	1.74

All (9) bond angle outliers are listed below:

Mol	Chain	Res	Type	Atoms	Z	Observed(°)	Ideal(°)
3	A	301	ATP	N3-C2-N1	-9.26	120.94	128.86
3	B	301	ATP	N3-C2-N1	-6.14	123.61	128.86
3	A	301	ATP	C4'-O4'-C1'	-4.92	104.70	109.83
3	B	301	ATP	O3'-C3'-C4'	-2.64	103.41	111.06
3	A	301	ATP	O5'-C5'-C4'	-2.25	101.16	109.00
3	B	301	ATP	C4-C5-N7	-2.08	107.40	109.41
3	B	301	ATP	C2-N1-C6	2.33	122.71	118.75
3	B	301	ATP	O3G-PG-O2G	2.36	116.91	107.59
3	A	301	ATP	C2-N1-C6	3.12	124.04	118.75

There are no chirality outliers.

There are no torsion outliers.

There are no ring outliers.

4 monomers are involved in 65 short contacts:

Mol	Chain	Res	Type	Clashes	Symm-Clashes
4	A	303	8M0	1	0
3	B	301	ATP	1	0
4	B	302	8M0	4	0
7	B	305	6M0	60	0

5.7 Other polymers [i](#)

There are no such residues in this entry.

5.8 Polymer linkage issues [i](#)

There are no chain breaks in this entry.

6 Fit of model and data [i](#)

6.1 Protein, DNA and RNA chains [i](#)

In the following table, the column labelled ‘#RSRZ > 2’ contains the number (and percentage) of RSRZ outliers, followed by percent RSRZ outliers for the chain as percentile scores relative to all X-ray entries and entries of similar resolution. The OWAB column contains the minimum, median, 95th percentile and maximum values of the occupancy-weighted average B-factor per residue. The column labelled ‘Q < 0.9’ lists the number of (and percentage) of residues with an average occupancy less than 0.9.

Mol	Chain	Analysed	<RSRZ>	#RSRZ>2	OWAB(Å ²)	Q<0.9
1	B	268/268 (100%)	-0.29	18 (6%) 18 17	12, 18, 42, 68	0
2	A	244/244 (100%)	-0.48	8 (3%) 46 43	10, 15, 35, 56	0
All	All	512/512 (100%)	-0.38	26 (5%) 28 26	10, 16, 40, 68	0

All (26) RSRZ outliers are listed below:

Mol	Chain	Res	Type	RSRZ
1	B	3	ASN	7.6
1	B	203	LYS	6.4
1	B	201	THR	5.6
2	A	276	ALA	5.5
1	B	202	SER	5.4
1	B	6	ALA	4.9
2	A	275	PRO	4.5
1	B	222	HIS	4.5
1	B	204	ASP	4.3
2	A	274	ARG	4.2
1	B	5	THR	4.1
1	B	4	SER	3.6
2	A	203	PRO	3.5
1	B	199	PRO	3.2
1	B	223	ASP	3.2
1	B	7	GLU	3.2
1	B	228	PHE	3.1
2	A	207	GLN	2.9
1	B	198	ASN	2.8
2	A	206	GLY	2.8
1	B	197	ALA	2.8
1	B	161	GLU	2.7
2	A	209[A]	ARG	2.4
1	B	219	LYS	2.2

Continued on next page...

Continued from previous page...

Mol	Chain	Res	Type	RSRZ
2	A	204	ASP	2.0
1	B	221	LEU	2.0

6.2 Non-standard residues in protein, DNA, RNA chains [i](#)

There are no non-standard protein/DNA/RNA residues in this entry.

6.3 Carbohydrates [i](#)

There are no carbohydrates in this entry.

6.4 Ligands [i](#)

In the following table, the Atoms column lists the number of modelled atoms in the group and the number defined in the chemical component dictionary. The B-factors column lists the minimum, median, 95th percentile and maximum values of B factors of atoms in the group. The column labelled 'Q< 0.9' lists the number of atoms with occupancy less than 0.9.

Mol	Type	Chain	Res	Atoms	RSCC	RSR	B-factors(\AA^2)	Q<0.9
7	6M0	B	305	31/32	0.97	0.14	25,42,74,80	31
5	PO4	B	303	5/5	0.97	0.14	46,47,49,49	0
3	ATP	B	301	31/31	0.98	0.10	11,18,27,29	22
5	PO4	A	305	1/5	0.98	0.54	69,69,69,69	0
6	MG	B	304	1/1	0.99	0.09	27,27,27,27	0
3	ATP	A	301	31/31	0.99	0.05	12,17,20,21	0
4	8M0	B	302	36/36	1.00	0.09	7,12,17,28	34
6	MG	A	302	1/1	1.00	0.03	15,15,15,15	0
4	8M0	A	303	34/36	1.00	0.06	10,13,15,16	0
8	MO	A	304	1/1	1.00	0.04	12,12,12,12	0

6.5 Other polymers [i](#)

There are no such residues in this entry.