



# Full wwPDB X-ray Structure Validation Report ⓘ

Jun 17, 2019 – 03:10 PM EDT

PDB ID : 6F6T  
Title : Phenylalanine ammonia-lyase (PAL) from Petroselinum crispum complexed with S-APPA  
Authors : Bata, Z.; Leveles, I.; Vertessy, G.B.; Poppe, L.  
Deposited on : 2017-12-06  
Resolution : 1.90 Å(reported)

This is a Full wwPDB X-ray Structure Validation Report for a publicly released PDB entry.

We welcome your comments at [validation@mail.wwpdb.org](mailto:validation@mail.wwpdb.org)

A user guide is available at

<https://www.wwpdb.org/validation/2017/XrayValidationReportHelp>

with specific help available everywhere you see the ⓘ symbol.

---

The following versions of software and data (see [references ⓘ](#)) were used in the production of this report:

MolProbity : 4.02b-467  
Mogul : 1.8.0 (224370), CSD as540be (2019)  
Xtriage (Phenix) : 1.13  
EDS : 2.3.2  
buster-report : 1.1.7 (2018)  
Percentile statistics : 20171227.v01 (using entries in the PDB archive December 27th 2017)  
Refmac : 5.8.0158  
CCP4 : 7.0 (Gargrove)  
Ideal geometry (proteins) : Engh & Huber (2001)  
Ideal geometry (DNA, RNA) : Parkinson et al. (1996)  
Validation Pipeline (wwPDB-VP) : 2.3.2

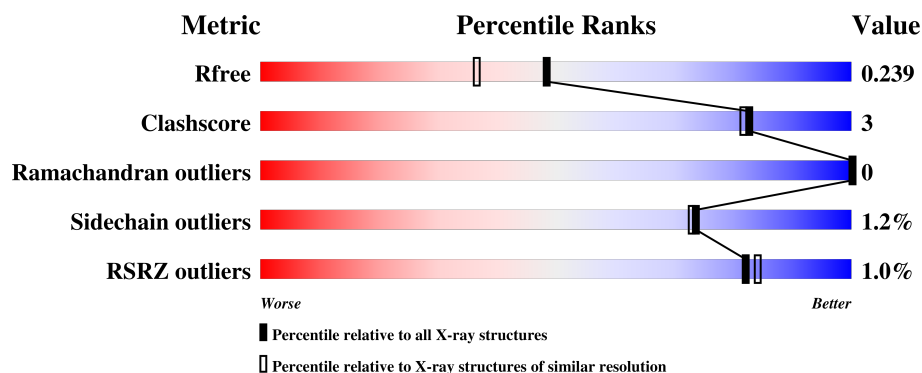
# 1 Overall quality at a glance

The following experimental techniques were used to determine the structure:

*X-RAY DIFFRACTION*

The reported resolution of this entry is 1.90 Å.

Percentile scores (ranging between 0-100) for global validation metrics of the entry are shown in the following graphic. The table shows the number of entries on which the scores are based.



Metric	Whole archive (#Entries)	Similar resolution (#Entries, resolution range(Å))
$R_{free}$	111664	5502 (1.90-1.90)
Clashscore	122126	6115 (1.90-1.90)
Ramachandran outliers	120053	6048 (1.90-1.90)
Sidechain outliers	120020	6048 (1.90-1.90)
RSRZ outliers	108989	5379 (1.90-1.90)

The table below summarises the geometric issues observed across the polymeric chains and their fit to the electron density. The red, orange, yellow and green segments on the lower bar indicate the fraction of residues that contain outliers for  $\geq 3$ , 2, 1 and 0 types of geometric quality criteria. A grey segment represents the fraction of residues that are not modelled. The numeric value for each fraction is indicated below the corresponding segment, with a dot representing fractions  $\leq 5\%$ . The upper red bar (where present) indicates the fraction of residues that have poor fit to the electron density. The numeric value is given above the bar.

Mol	Chain	Length	Quality of chain
1	A	714	<div> <div></div> <div>87% 7% 5%</div> </div>
1	B	714	<div> <div></div> <div>88% 6% 5%</div> </div>

## 2 Entry composition

There are 3 unique types of molecules in this entry. The entry contains 10962 atoms, of which 0 are hydrogens and 0 are deuteriums.

In the tables below, the ZeroOcc column contains the number of atoms modelled with zero occupancy, the AltConf column contains the number of residues with at least one atom in alternate conformation and the Trace column contains the number of residues modelled with at most 2 atoms.

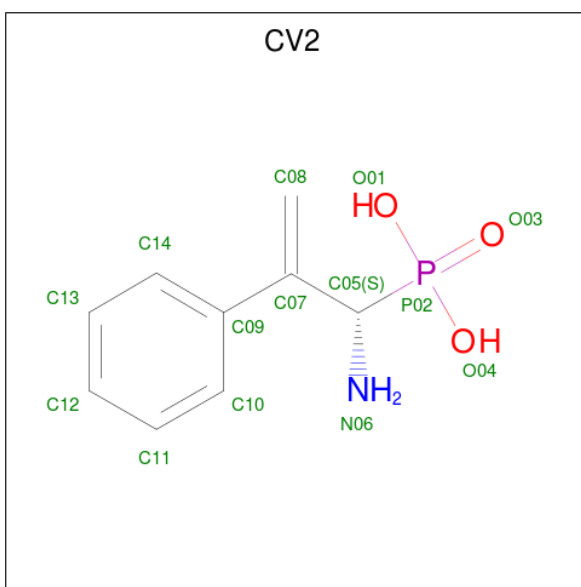
- Molecule 1 is a protein called Phenylalanine ammonia-lyase 1.

Mol	Chain	Residues	Atoms					ZeroOcc	AltConf	Trace
1	A	675	Total	C	N	O	S	0	4	0
			5156	3254	885	994	23			
1	B	677	Total	C	N	O	S	0	6	0
			5175	3267	889	995	24			

There are 10 discrepancies between the modelled and reference sequences:

Chain	Residue	Modelled	Actual	Comment	Reference
A	203	MDO	ALA	chromophore	UNP P24481
A	203	MDO	SER	chromophore	UNP P24481
A	203	MDO	GLY	chromophore	UNP P24481
A	704	SER	CYS	engineered mutation	UNP P24481
A	716	SER	CYS	engineered mutation	UNP P24481
B	203	MDO	ALA	chromophore	UNP P24481
B	203	MDO	SER	chromophore	UNP P24481
B	203	MDO	GLY	chromophore	UNP P24481
B	704	SER	CYS	engineered mutation	UNP P24481
B	716	SER	CYS	engineered mutation	UNP P24481

- Molecule 2 is (S)-(1-amino-2-phenylallyl)phosphonic acid (three-letter code: CV2) (formula:  $C_9H_{12}NO_3P$ ) (labeled as "Ligand of Interest" by author).



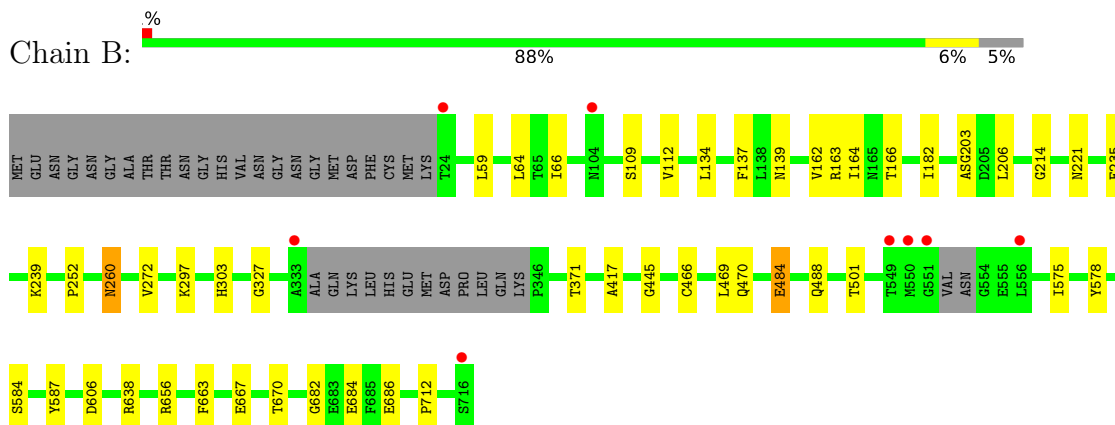
Mol	Chain	Residues	Atoms					ZeroOcc	AltConf
2	A	1	Total	C	N	O	P	0	0
			14	9	1	3	1		
2	B	1	Total	C	N	O	P	0	0
			14	9	1	3	1		

- Molecule 3 is water.

Mol	Chain	Residues	Atoms		ZeroOcc	AltConf
3	A	283	Total	O	0	12
			295	295		
3	B	296	Total	O	0	12
			308	308		



- Molecule 1: Phenylalanine ammonia-lyase 1



## 4 Data and refinement statistics

Property	Value	Source
Space group	C 2 2 21	Depositor
Cell constants a, b, c, $\alpha$ , $\beta$ , $\gamma$	118.74Å 161.10Å 141.65Å 90.00° 90.00° 90.00°	Depositor
Resolution (Å)	95.58 – 1.90 95.58 – 1.90	Depositor EDS
% Data completeness (in resolution range)	99.9 (95.58-1.90) 85.9 (95.58-1.90)	Depositor EDS
$R_{merge}$	(Not available)	Depositor
$R_{sym}$	(Not available)	Depositor
$\langle I/\sigma(I) \rangle$ <sup>1</sup>	0.55 (at 1.90Å)	Xtriage
Refinement program	PHENIX 1.11.1_2575	Depositor
R, $R_{free}$	0.192 , 0.239 0.192 , 0.239	Depositor DCC
$R_{free}$ test set	5353 reflections (5.03%)	wwPDB-VP
Wilson B-factor (Å <sup>2</sup> )	19.3	Xtriage
Anisotropy	0.409	Xtriage
Bulk solvent $k_{sol}$ (e/Å <sup>3</sup> ), $B_{sol}$ (Å <sup>2</sup> )	0.35 , 45.3	EDS
L-test for twinning <sup>2</sup>	$\langle  L  \rangle = 0.50$ , $\langle L^2 \rangle = 0.33$	Xtriage
Estimated twinning fraction	No twinning to report.	Xtriage
$F_o, F_c$ correlation	0.95	EDS
Total number of atoms	10962	wwPDB-VP
Average B, all atoms (Å <sup>2</sup> )	28.0	wwPDB-VP

Xtriage's analysis on translational NCS is as follows: *The largest off-origin peak in the Patterson function is 3.57% of the height of the origin peak. No significant pseudotranslation is detected.*

<sup>1</sup>Intensities estimated from amplitudes.

<sup>2</sup>Theoretical values of  $\langle |L| \rangle$ ,  $\langle L^2 \rangle$  for acentric reflections are 0.5, 0.333 respectively for untwinned datasets, and 0.375, 0.2 for perfectly twinned datasets.

## 5 Model quality [i](#)

### 5.1 Standard geometry [i](#)

Bond lengths and bond angles in the following residue types are not validated in this section: CV2, MDO

The Z score for a bond length (or angle) is the number of standard deviations the observed value is removed from the expected value. A bond length (or angle) with  $|Z| > 5$  is considered an outlier worth inspection. RMSZ is the root-mean-square of all Z scores of the bond lengths (or angles).

Mol	Chain	Bond lengths		Bond angles	
		RMSZ	$\# Z  > 5$	RMSZ	$\# Z  > 5$
1	A	0.38	0/5244	0.52	0/7096
1	B	0.38	0/5270	0.53	0/7130
All	All	0.38	0/10514	0.52	0/14226

Chiral center outliers are detected by calculating the chiral volume of a chiral center and verifying if the center is modelled as a planar moiety or with the opposite hand. A planarity outlier is detected by checking planarity of atoms in a peptide group, atoms in a mainchain group or atoms of a sidechain that are expected to be planar.

Mol	Chain	#Chirality outliers	#Planarity outliers
1	A	0	1

There are no bond length outliers.

There are no bond angle outliers.

There are no chirality outliers.

All (1) planarity outliers are listed below:

Mol	Chain	Res	Type	Group
1	A	203	MDO	Peptide

### 5.2 Too-close contacts [i](#)

In the following table, the Non-H and H(model) columns list the number of non-hydrogen atoms and hydrogen atoms in the chain respectively. The H(added) column lists the number of hydrogen atoms added and optimized by MolProbity. The Clashes column lists the number of clashes within the asymmetric unit, whereas Symm-Clashes lists symmetry related clashes.

Mol	Chain	Non-H	H(model)	H(added)	Clashes	Symm-Clashes
1	A	5156	0	5157	30	0
1	B	5175	0	5184	25	0
2	A	14	0	0	0	0
2	B	14	0	0	0	0
3	A	295	0	0	2	0
3	B	308	0	0	1	0
All	All	10962	0	10341	55	0

The all-atom clashscore is defined as the number of clashes found per 1000 atoms (including hydrogen atoms). The all-atom clashscore for this structure is 3.

All (55) close contacts within the same asymmetric unit are listed below, sorted by their clash magnitude.

Atom-1	Atom-2	Interatomic distance (Å)	Clash overlap (Å)
1:A:557:HIS:HB2	1:A:558:PRO:HD2	1.62	0.81
1:B:139:ASN:HD22	1:B:221:ASN:HD21	1.42	0.66
1:A:350[A]:ARG:NH1	3:A:906:HOH:O	2.36	0.59
1:A:112:VAL:HG13	1:A:252:PRO:HB3	1.85	0.59
1:A:557:HIS:HB2	1:A:558:PRO:CD	2.34	0.57
1:B:663:PHE:HA	1:B:667:GLU:HB2	1.87	0.56
1:A:670:THR:HG23	1:A:684:GLU:HB3	1.88	0.55
1:A:562:CYS:HB3	1:A:600:HIS:CG	2.42	0.55
1:B:139:ASN:ND2	1:B:221:ASN:HD21	2.05	0.54
1:A:484:GLU:HB3	1:A:488:GLN:HG3	1.90	0.54
1:A:466:CYS:O	1:A:470:GLN:HG2	2.10	0.51
1:B:670:THR:HG23	1:B:684:GLU:HB3	1.93	0.51
1:A:36:ALA:HB1	1:A:372[B]:LYS:HD2	1.93	0.50
1:B:466:CYS:O	1:B:470:GLN:HG2	2.11	0.50
1:A:665:ARG:HD3	1:A:670:THR:O	2.12	0.49
1:A:44:GLU:OE1	3:A:902:HOH:O	2.19	0.49
1:A:273:LEU:HD13	1:A:371:THR:HA	1.95	0.49
1:A:648:ILE:HG23	1:A:651:ARG:HH21	1.77	0.49
1:B:112:VAL:HG13	1:B:252:PRO:HB3	1.95	0.48
1:B:235:GLU:O	1:B:239:LYS:HG2	2.13	0.48
1:A:203:MDO:O	1:A:206:LEU:N	2.44	0.48
1:B:303:HIS:CE1	1:B:712:PRO:HG3	2.49	0.47
1:A:559:SER:HB3	1:A:615:ILE:HG12	1.96	0.47
1:B:484:GLU:HB3	1:B:488:GLN:HG3	1.97	0.47
1:A:370:SER:HB3	1:A:408:SER:HB2	1.97	0.46
1:B:162:VAL:O	1:B:166[B]:THR:HG22	2.15	0.46
1:A:663:PHE:CE2	1:A:697:ILE:HD13	2.50	0.46
1:B:682:GLY:O	1:B:686:GLU:HG2	2.16	0.46

*Continued on next page...*



*Continued from previous page...*

Atom-1	Atom-2	Interatomic distance (Å)	Clash overlap (Å)
1:A:109:SER:HB2	1:A:112:VAL:HB	1.98	0.45
1:A:583:CYS:HB3	1:A:627:LYS:HG2	1.97	0.45
1:A:682:GLY:O	1:A:686:GLU:HG2	2.16	0.45
1:B:272:VAL:HG11	1:B:501:THR:HG22	1.99	0.45
1:B:417:ALA:HA	1:B:469:LEU:HG	1.97	0.45
1:B:203:MDO:HB22	1:B:260:ASN:HD21	1.83	0.44
1:B:214:GLY:HA3	3:B:993:HOH:O	2.18	0.43
1:A:163:ARG:HA	1:A:163:ARG:HD2	1.78	0.43
1:B:164:ILE:HD11	1:B:182:ILE:HG22	2.00	0.43
1:B:163:ARG:NH2	1:B:166[B]:THR:HG21	2.34	0.43
1:B:327:GLY:HA3	1:B:656:ARG:HD2	2.00	0.43
1:B:59:LEU:HD21	1:B:64:LEU:HD13	2.00	0.42
1:B:445:GLY:O	1:B:638[B]:ARG:NH2	2.46	0.42
1:A:549:THR:HB	1:A:557:HIS:N	2.35	0.42
1:B:134:LEU:HA	1:B:137:PHE:CE2	2.54	0.42
1:B:203:MDO:O	1:B:206:LEU:N	2.44	0.42
1:A:440:PRO:HD2	1:A:525:LEU:HD13	2.02	0.41
1:A:374:ILE:HA	1:A:374:ILE:HD13	1.88	0.41
1:A:648:ILE:CG2	1:A:651:ARG:HH21	2.33	0.41
1:A:303:HIS:CE1	1:A:712:PRO:HG3	2.56	0.41
1:B:66:ILE:HD13	1:B:371:THR:HG23	2.02	0.41
1:A:373:MET:HG2	1:A:404:PRO:HB3	2.03	0.41
1:B:578:TYR:HA	1:B:587:TYR:CD2	2.56	0.41
1:A:384:ASN:OD1	1:A:385:PRO:HA	2.20	0.41
1:B:109:SER:HB2	1:B:112:VAL:HB	2.03	0.41
1:A:225:VAL:HG22	1:A:231:ILE:HD13	2.03	0.40
1:A:359:TRP:CD1	1:A:422:LEU:HB2	2.56	0.40

There are no symmetry-related clashes.

## 5.3 Torsion angles

### 5.3.1 Protein backbone

In the following table, the Percentiles column shows the percent Ramachandran outliers of the chain as a percentile score with respect to all X-ray entries followed by that with respect to entries of similar resolution.

The Analysed column shows the number of residues for which the backbone conformation was analysed, and the total number of residues.

Mol	Chain	Analysed	Favoured	Allowed	Outliers	Percentiles	
1	A	672/714 (94%)	661 (98%)	11 (2%)	0	100	100
1	B	676/714 (95%)	666 (98%)	10 (2%)	0	100	100
All	All	1348/1428 (94%)	1327 (98%)	21 (2%)	0	100	100

There are no Ramachandran outliers to report.

### 5.3.2 Protein sidechains ⓘ

In the following table, the Percentiles column shows the percent sidechain outliers of the chain as a percentile score with respect to all X-ray entries followed by that with respect to entries of similar resolution.

The Analysed column shows the number of residues for which the sidechain conformation was analysed, and the total number of residues.

Mol	Chain	Analysed	Rotameric	Outliers	Percentiles	
1	A	554/591 (94%)	547 (99%)	7 (1%)	71	70
1	B	558/591 (94%)	552 (99%)	6 (1%)	76	75
All	All	1112/1182 (94%)	1099 (99%)	13 (1%)	74	73

All (13) residues with a non-rotameric sidechain are listed below:

Mol	Chain	Res	Type
1	A	67	SER
1	A	102	SER
1	A	139	ASN
1	A	260	ASN
1	A	382	ASN
1	A	549	THR
1	A	671	GLU
1	B	260	ASN
1	B	297	LYS
1	B	484	GLU
1	B	575	ILE
1	B	584	SER
1	B	606	ASP

Some sidechains can be flipped to improve hydrogen bonding and reduce clashes. All (7) such sidechains are listed below:

Mol	Chain	Res	Type
1	A	104	ASN
1	A	153	HIS
1	A	260	ASN
1	A	595	GLN
1	B	139	ASN
1	B	260	ASN
1	B	396	HIS

### 5.3.3 RNA ⓘ

There are no RNA molecules in this entry.

## 5.4 Non-standard residues in protein, DNA, RNA chains ⓘ

2 non-standard protein/DNA/RNA residues are modelled in this entry.

In the following table, the Counts columns list the number of bonds (or angles) for which Mogul statistics could be retrieved, the number of bonds (or angles) that are observed in the model and the number of bonds (or angles) that are defined in the Chemical Component Dictionary. The Link column lists molecule types, if any, to which the group is linked. The Z score for a bond length (or angle) is the number of standard deviations the observed value is removed from the expected value. A bond length (or angle) with  $|Z| > 2$  is considered an outlier worth inspection. RMSZ is the root-mean-square of all Z scores of the bond lengths (or angles).

Mol	Type	Chain	Res	Link	Bond lengths			Bond angles		
					Counts	RMSZ	# $ Z  > 2$	Counts	RMSZ	# $ Z  > 2$
1	MDO	A	203	1,2	12,13,14	3.37	7 (58%)	14,18,20	3.39	7 (50%)
1	MDO	B	203	1,2	12,13,14	3.59	6 (50%)	14,18,20	3.55	8 (57%)

In the following table, the Chirals column lists the number of chiral outliers, the number of chiral centers analysed, the number of these observed in the model and the number defined in the Chemical Component Dictionary. Similar counts are reported in the Torsion and Rings columns. '-' means no outliers of that kind were identified.

Mol	Type	Chain	Res	Link	Chirals	Torsions	Rings
1	MDO	A	203	1,2	-	2/4/23/24	0/1/1/1
1	MDO	B	203	1,2	-	2/4/23/24	0/1/1/1

All (13) bond length outliers are listed below:

Mol	Chain	Res	Type	Atoms	Z	Observed(Å)	Ideal(Å)
1	B	203	MDO	C1-N2	7.42	1.43	1.32

*Continued on next page...*

*Continued from previous page...*

Mol	Chain	Res	Type	Atoms	Z	Observed(Å)	Ideal(Å)
1	A	203	MDO	C1-N2	6.57	1.42	1.32
1	A	203	MDO	C1-N3	6.19	1.47	1.37
1	B	203	MDO	C1-N3	6.09	1.47	1.37
1	B	203	MDO	CA2-C2	5.28	1.54	1.43
1	A	203	MDO	CA2-C2	4.39	1.52	1.43
1	B	203	MDO	C2-N3	3.31	1.47	1.39
1	A	203	MDO	C2-N3	3.01	1.47	1.39
1	A	203	MDO	CA3-C	2.79	1.58	1.49
1	B	203	MDO	CA3-C	2.75	1.58	1.49
1	A	203	MDO	CA3-N3	-2.29	1.42	1.47
1	B	203	MDO	CA-C1	2.29	1.54	1.51
1	A	203	MDO	CA-C1	2.14	1.54	1.51

All (15) bond angle outliers are listed below:

Mol	Chain	Res	Type	Atoms	Z	Observed(°)	Ideal(°)
1	B	203	MDO	CA2-C2-N3	6.00	106.22	103.35
1	B	203	MDO	CB-CA-N	5.79	128.40	109.65
1	A	203	MDO	O2-C2-CA2	-5.73	127.74	130.96
1	A	203	MDO	CB-CA-N	5.49	127.43	109.65
1	B	203	MDO	O2-C2-CA2	-5.33	127.97	130.96
1	B	203	MDO	CA2-N2-C1	5.25	110.23	105.41
1	A	203	MDO	CA2-N2-C1	5.08	110.07	105.41
1	A	203	MDO	CA2-C2-N3	4.64	105.57	103.35
1	A	203	MDO	N3-C1-N2	-3.85	108.79	111.45
1	A	203	MDO	CA-C1-N3	3.73	129.22	124.75
1	B	203	MDO	CA-C1-N3	3.50	128.94	124.75
1	A	203	MDO	CA3-N3-C1	3.36	131.13	127.20
1	B	203	MDO	CA3-N3-C1	3.10	130.83	127.20
1	B	203	MDO	N3-C1-N2	-2.85	109.48	111.45
1	B	203	MDO	C2-CA2-N2	-2.65	107.06	108.92

There are no chirality outliers.

All (4) torsion outliers are listed below:

Mol	Chain	Res	Type	Atoms
1	B	203	MDO	N2-C1-CA-CB
1	A	203	MDO	N2-C1-CA-CB
1	B	203	MDO	N3-C1-CA-CB
1	A	203	MDO	N3-C1-CA-CB

There are no ring outliers.

2 monomers are involved in 3 short contacts:

Mol	Chain	Res	Type	Clashes	Symm-Clashes
1	A	203	MDO	1	0
1	B	203	MDO	2	0

## 5.5 Carbohydrates [i](#)

There are no carbohydrates in this entry.

## 5.6 Ligand geometry [i](#)

2 ligands are modelled in this entry.

In the following table, the Counts columns list the number of bonds (or angles) for which Mogul statistics could be retrieved, the number of bonds (or angles) that are observed in the model and the number of bonds (or angles) that are defined in the Chemical Component Dictionary. The Link column lists molecule types, if any, to which the group is linked. The Z score for a bond length (or angle) is the number of standard deviations the observed value is removed from the expected value. A bond length (or angle) with  $|Z| > 2$  is considered an outlier worth inspection. RMSZ is the root-mean-square of all Z scores of the bond lengths (or angles).

Mol	Type	Chain	Res	Link	Bond lengths			Bond angles		
					Counts	RMSZ	# Z  > 2	Counts	RMSZ	# Z  > 2
2	CV2	A	801	1	12,14,14	1.57	3 (25%)	13,20,20	1.04	1 (7%)
2	CV2	B	801	1	12,14,14	1.75	2 (16%)	13,20,20	1.05	1 (7%)

In the following table, the Chirals column lists the number of chiral outliers, the number of chiral centers analysed, the number of these observed in the model and the number defined in the Chemical Component Dictionary. Similar counts are reported in the Torsion and Rings columns. '-' means no outliers of that kind were identified.

Mol	Type	Chain	Res	Link	Chirals	Torsions	Rings
2	CV2	A	801	1	-	0/9/14/14	0/1/1/1
2	CV2	B	801	1	-	3/9/14/14	0/1/1/1

All (5) bond length outliers are listed below:

Mol	Chain	Res	Type	Atoms	Z	Observed(Å)	Ideal(Å)
2	B	801	CV2	C09-C07	4.98	1.53	1.49
2	A	801	CV2	C09-C07	3.44	1.52	1.49
2	A	801	CV2	P02-O04	-2.58	1.50	1.54
2	A	801	CV2	P02-O01	-2.26	1.51	1.54

*Continued on next page...*

*Continued from previous page...*

Mol	Chain	Res	Type	Atoms	Z	Observed(Å)	Ideal(Å)
2	B	801	CV2	P02-O01	-2.09	1.51	1.54

All (2) bond angle outliers are listed below:

Mol	Chain	Res	Type	Atoms	Z	Observed(°)	Ideal(°)
2	B	801	CV2	O01-P02-O03	-3.03	105.70	113.43
2	A	801	CV2	C14-C09-C07	-2.70	118.30	121.13

There are no chirality outliers.

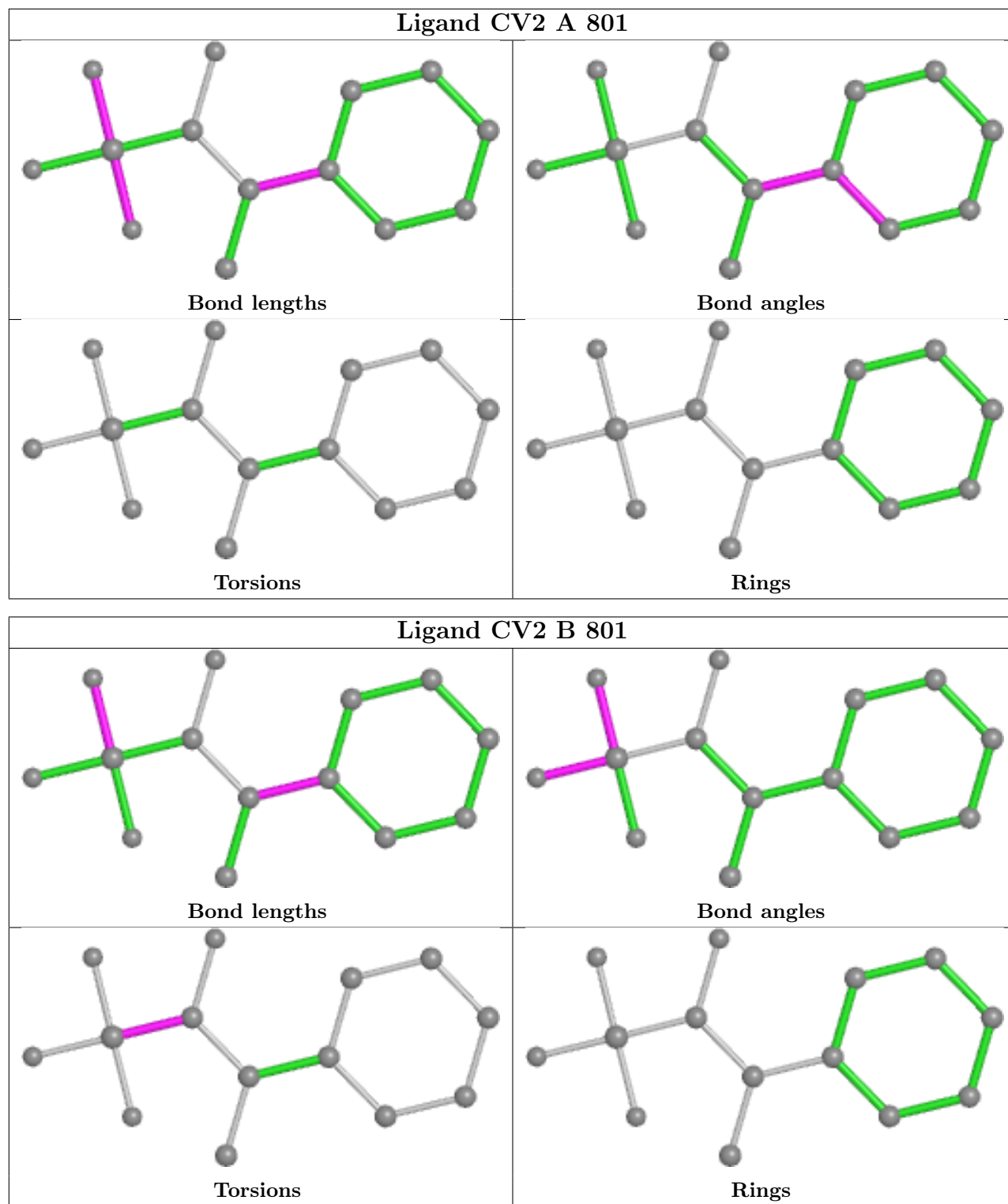
All (3) torsion outliers are listed below:

Mol	Chain	Res	Type	Atoms
2	B	801	CV2	C07-C05-P02-O03
2	B	801	CV2	C07-C05-P02-O04
2	B	801	CV2	C07-C05-P02-O01

There are no ring outliers.

No monomer is involved in short contacts.

The following is a two-dimensional graphical depiction of Mogul quality analysis of bond lengths, bond angles, torsion angles, and ring geometry for all instances of the Ligand of Interest. In addition, ligands with molecular weight > 250 and outliers as shown on the validation Tables will also be included. For torsion angles, if less than 5% of the Mogul distribution of torsion angles is within 10 degrees of the torsion angle in question, then that torsion angle is considered an outlier. Any bond that is central to one or more torsion angles identified as an outlier by Mogul will be highlighted in the graph. For rings, the root-mean-square deviation (RMSD) between the ring in question and similar rings identified by Mogul is calculated over all ring torsion angles. If the average RMSD is greater than 60 degrees and the minimal RMSD between the ring in question and any Mogul-identified rings is also greater than 60 degrees, then that ring is considered an outlier. The outliers are highlighted in purple. The color gray indicates Mogul did not find sufficient equivalents in the CSD to analyse the geometry.



## 5.7 Other polymers [i](#)

There are no such residues in this entry.

## 5.8 Polymer linkage issues ⓘ

There are no chain breaks in this entry.



## 6 Fit of model and data [i](#)

### 6.1 Protein, DNA and RNA chains [i](#)

In the following table, the column labelled ‘#RSRZ> 2’ contains the number (and percentage) of RSRZ outliers, followed by percent RSRZ outliers for the chain as percentile scores relative to all X-ray entries and entries of similar resolution. The OWAB column contains the minimum, median, 95<sup>th</sup> percentile and maximum values of the occupancy-weighted average B-factor per residue. The column labelled ‘Q< 0.9’ lists the number of (and percentage) of residues with an average occupancy less than 0.9.

Mol	Chain	Analysed	<RSRZ>	#RSRZ>2	OWAB(Å <sup>2</sup> )	Q<0.9
1	A	674/714 (94%)	-0.13	5 (0%) 87 89	18, 27, 48, 77	0
1	B	676/714 (94%)	-0.15	8 (1%) 79 81	17, 26, 46, 71	0
All	All	1350/1428 (94%)	-0.14	13 (0%) 82 84	17, 26, 47, 77	0

All (13) RSRZ outliers are listed below:

Mol	Chain	Res	Type	RSRZ
1	B	550	MET	4.7
1	A	557	HIS	4.6
1	B	716	SER	4.0
1	A	346	PRO	3.9
1	A	558	PRO	3.9
1	B	24	THR	3.4
1	B	556	LEU	2.6
1	A	559	SER	2.3
1	A	103	MET	2.3
1	B	549	THR	2.3
1	B	333	ALA	2.2
1	B	104	ASN	2.1
1	B	551	GLY	2.0

### 6.2 Non-standard residues in protein, DNA, RNA chains [i](#)

In the following table, the Atoms column lists the number of modelled atoms in the group and the number defined in the chemical component dictionary. The B-factors column lists the minimum, median, 95<sup>th</sup> percentile and maximum values of B factors of atoms in the group. The column labelled ‘Q< 0.9’ lists the number of atoms with occupancy less than 0.9.

Mol	Type	Chain	Res	Atoms	RSCC	RSR	B-factors(Å <sup>2</sup> )	Q<0.9
1	MDO	A	203	13/14	0.88	0.15	18,21,26,40	0

*Continued on next page...*

*Continued from previous page...*

Mol	Type	Chain	Res	Atoms	RSCC	RSR	B-factors( $\text{\AA}^2$ )	Q<0.9
1	MDO	B	203	13/14	0.91	0.13	18,22,28,31	0

### 6.3 Carbohydrates [i](#)

There are no carbohydrates in this entry.

### 6.4 Ligands [i](#)

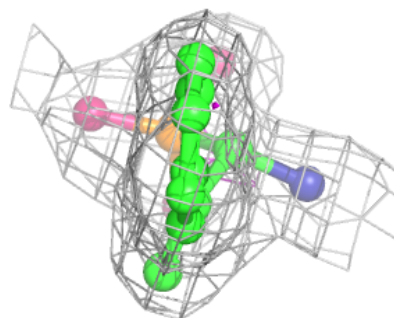
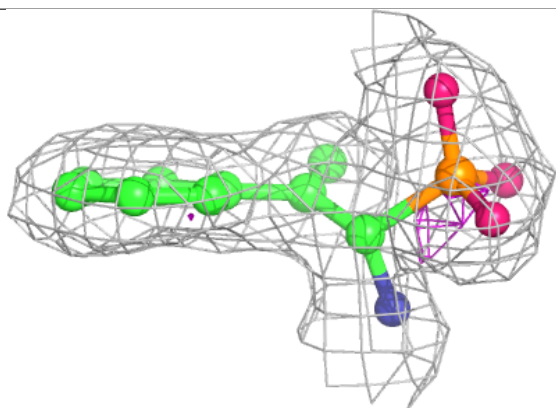
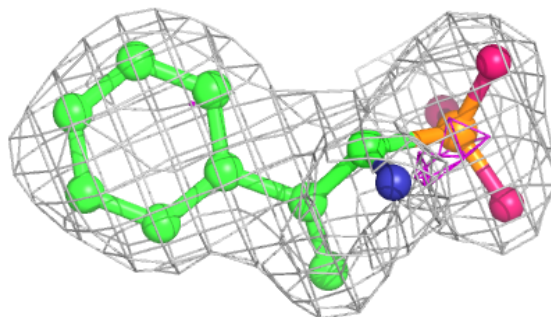
In the following table, the Atoms column lists the number of modelled atoms in the group and the number defined in the chemical component dictionary. The B-factors column lists the minimum, median, 95<sup>th</sup> percentile and maximum values of B factors of atoms in the group. The column labelled 'Q< 0.9' lists the number of atoms with occupancy less than 0.9.

Mol	Type	Chain	Res	Atoms	RSCC	RSR	B-factors( $\text{\AA}^2$ )	Q<0.9
2	CV2	A	801	14/14	0.95	0.11	22,27,32,32	0
2	CV2	B	801	14/14	0.96	0.10	22,25,34,36	0

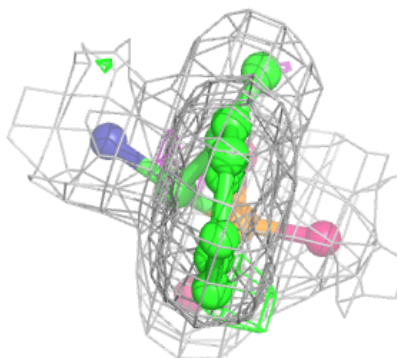
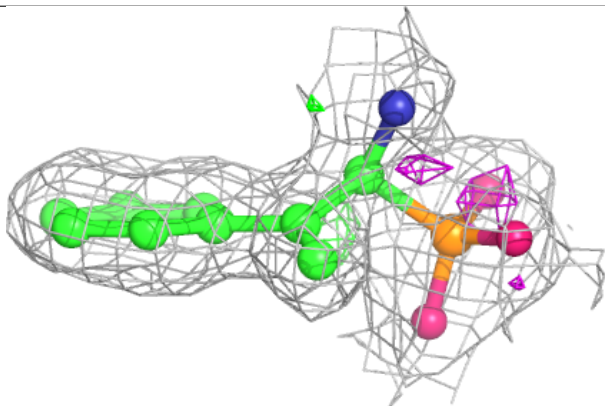
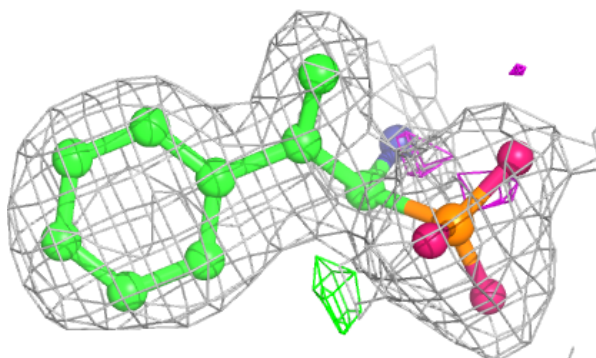
The following is a graphical depiction of the model fit to experimental electron density of all instances of the Ligand of Interest. In addition, ligands with molecular weight > 250 and outliers as shown on the geometry validation Tables will also be included. Each fit is shown from different orientation to approximate a three-dimensional view.

**Electron density around CV2 A 801:**

$2mF_o-DF_c$  (at 0.7 rmsd) in gray  
 $mF_o-DF_c$  (at 3 rmsd) in purple (negative)  
and green (positive)

**Electron density around CV2 B 801:**

$2mF_o-DF_c$  (at 0.7 rmsd) in gray  
 $mF_o-DF_c$  (at 3 rmsd) in purple (negative)  
and green (positive)



## 6.5 Other polymers [i](#)

There are no such residues in this entry.