



Full wwPDB X-ray Structure Validation Report ⓘ

Mar 9, 2018 – 11:35 pm GMT

PDB ID : 4F8B
Title : Crystal Structure of the Covalent Thioimide Intermediate of Unimodular Nitrile Reductase QueF
Authors : Stec, B.; Swairjo, M.A.
Deposited on : 2012-05-17
Resolution : 2.50 Å(reported)

This is a Full wwPDB X-ray Structure Validation Report for a publicly released PDB entry.

We welcome your comments at validation@mail.wwpdb.org

A user guide is available at

<https://www.wwpdb.org/validation/2017/XrayValidationReportHelp>

with specific help available everywhere you see the ⓘ symbol.

The following versions of software and data (see [references ⓘ](#)) were used in the production of this report:

MolProbity : 4.02b-467
Mogul : 1.7.3 (157068), CSD as539be (2018)
Xtriage (Phenix) : 1.13
EDS : trunk30967
Percentile statistics : 20171227.v01 (using entries in the PDB archive December 27th 2017)
Refmac : 5.8.0158
CCP4 : 7.0 (Gargrove)
Ideal geometry (proteins) : Engh & Huber (2001)
Ideal geometry (DNA, RNA) : Parkinson et al. (1996)
Validation Pipeline (wwPDB-VP) : trunk30967

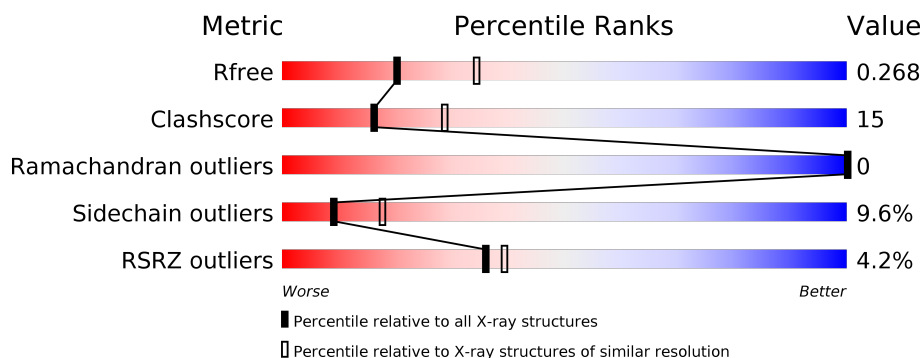
1 Overall quality at a glance

The following experimental techniques were used to determine the structure:

X-RAY DIFFRACTION

The reported resolution of this entry is 2.50 Å.

Percentile scores (ranging between 0-100) for global validation metrics of the entry are shown in the following graphic. The table shows the number of entries on which the scores are based.



Metric	Whole archive (#Entries)	Similar resolution (#Entries, resolution range(Å))
R_{free}	111664	4155 (2.50-2.50)
Clashscore	122126	4827 (2.50-2.50)
Ramachandran outliers	120053	4735 (2.50-2.50)
Sidechain outliers	120020	4737 (2.50-2.50)
RSRZ outliers	108989	4058 (2.50-2.50)

The table below summarises the geometric issues observed across the polymeric chains and their fit to the electron density. The red, orange, yellow and green segments on the lower bar indicate the fraction of residues that contain outliers for ≥ 3 , 2, 1 and 0 types of geometric quality criteria. A grey segment represents the fraction of residues that are not modelled. The numeric value for each fraction is indicated below the corresponding segment, with a dot representing fractions $\leq 5\%$. The upper red bar (where present) indicates the fraction of residues that have poor fit to the electron density. The numeric value is given above the bar.

Mol	Chain	Length	Quality of chain
1	A	165	<div> <div>5%</div> <div> <div></div> <div>52%</div> <div>26%</div> <div>5%</div> <div>16%</div> </div> </div>
1	B	165	<div> <div>2%</div> <div> <div></div> <div>64%</div> <div>21%</div> <div>•</div> <div>12%</div> </div> </div>
1	C	165	<div> <div>4%</div> <div> <div></div> <div>59%</div> <div>25%</div> <div>•</div> <div>12%</div> </div> </div>
1	D	165	<div> <div>4%</div> <div> <div></div> <div>63%</div> <div>22%</div> <div>•</div> <div>12%</div> </div> </div>
1	E	165	<div> <div>4%</div> <div> <div></div> <div>62%</div> <div>22%</div> <div>•</div> <div>12%</div> </div> </div>

2 Entry composition [i](#)

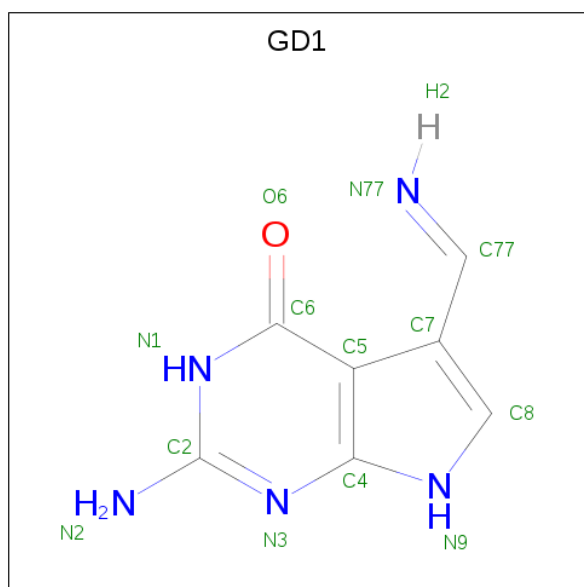
There are 6 unique types of molecules in this entry. The entry contains 6272 atoms, of which 0 are hydrogens and 0 are deuteriums.

In the tables below, the ZeroOcc column contains the number of atoms modelled with zero occupancy, the AltConf column contains the number of residues with at least one atom in alternate conformation and the Trace column contains the number of residues modelled with at most 2 atoms.

- Molecule 1 is a protein called NADPH-dependent 7-cyano-7-deazaguanine reductase.

Mol	Chain	Residues	Atoms					ZeroOcc	AltConf	Trace
1	A	139	Total	C	N	O	S	0	0	0
			1161	754	183	214	10			
1	B	145	Total	C	N	O	S	0	0	0
			1213	783	193	227	10			
1	C	145	Total	C	N	O	S	0	1	0
			1222	788	194	230	10			
1	D	145	Total	C	N	O	S	0	0	0
			1213	783	193	227	10			
1	E	145	Total	C	N	O	S	0	0	0
			1213	783	193	227	10			

- Molecule 2 is 2-amino-5-[(Z)-iminomethyl]-3,7-dihydro-4H-pyrrolo[2,3-d]pyrimidin-4-one (three-letter code: GD1) (formula: C₇H₇N₅O).



Mol	Chain	Residues	Atoms				ZeroOcc	AltConf
2	B	1	Total	C	N	O	0	0
			13	7	5	1		

Continued on next page...

Mol	Chain	Residues	Atoms				ZeroOcc	AltConf
2	C	1	Total 13	C 7	N 5	O 1	0	0
2	D	1	Total 13	C 7	N 5	O 1	0	0
2	E	1	Total 13	C 7	N 5	O 1	0	0

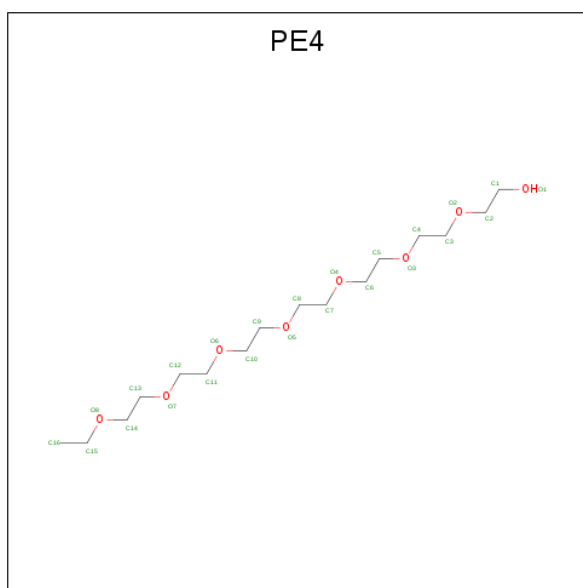
- | Mol | Chain | Residues | Atoms | ZeroOcc | AltConf |
|-----|-------|----------|-----------------|---------|---------|
| 3 | B | 1 | Total Mg
1 1 | 0 | 0 |
| 3 | D | 1 | Total Mg
1 1 | 0 | 0 |
| 3 | C | 1 | Total Mg
1 1 | 0 | 0 |
| 3 | E | 1 | Total Mg
1 1 | 0 | 0 |

-
- Chemical structure of phosphate (PO_4) showing the central phosphorus atom (P) bonded to four oxygen atoms (O). The structure is labeled with atom IDs: O1, O2, O3, O4, and P. The oxygen atoms are arranged in a tetrahedral geometry around the phosphorus atom. The bonds are color-coded: single bonds are purple, and double bonds are orange.

Mol	Chain	Residues	Atoms			ZeroOcc	AltConf
4	B	1	Total	O	P	0	0
			5	4	1		

- 
- WORLD WIDE
PDB
PROTEIN DATA BANK

ETHOXY]-ETHOXY}-ETHANOL (three-letter code: PE4) (formula: C₁₆H₃₄O₈).



Mol	Chain	Residues	Atoms			ZeroOcc	AltConf
5	D	1	Total	C	O	0	0
			24	16	8		

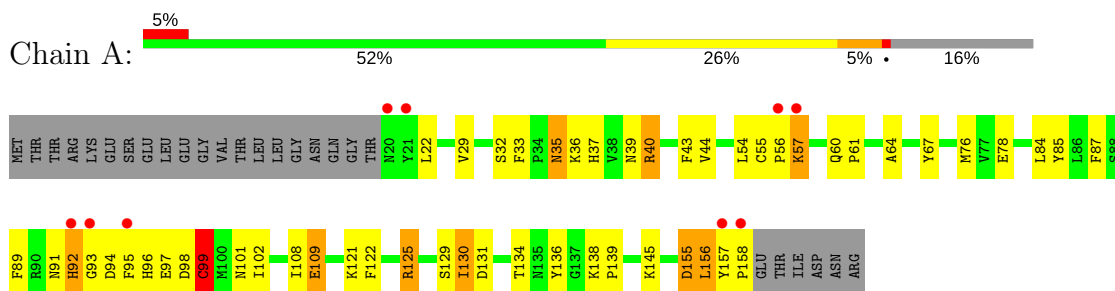
- Molecule 6 is water.

Mol	Chain	Residues	Atoms	ZeroOcc	AltConf
6	A	32	Total O 32 32	0	0
6	B	41	Total O 41 41	0	0
6	C	38	Total O 38 38	0	0
6	D	32	Total O 32 32	0	0
6	E	22	Total O 22 22	0	0

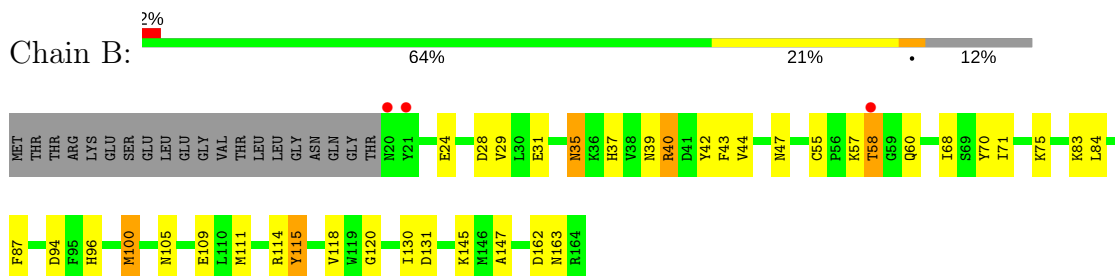
3 Residue-property plots [i](#)

These plots are drawn for all protein, RNA and DNA chains in the entry. The first graphic for a chain summarises the proportions of the various outlier classes displayed in the second graphic. The second graphic shows the sequence view annotated by issues in geometry and electron density. Residues are color-coded according to the number of geometric quality criteria for which they contain at least one outlier: green = 0, yellow = 1, orange = 2 and red = 3 or more. A red dot above a residue indicates a poor fit to the electron density ($RSRZ > 2$). Stretches of 2 or more consecutive residues without any outlier are shown as a green connector. Residues present in the sample, but not in the model, are shown in grey.

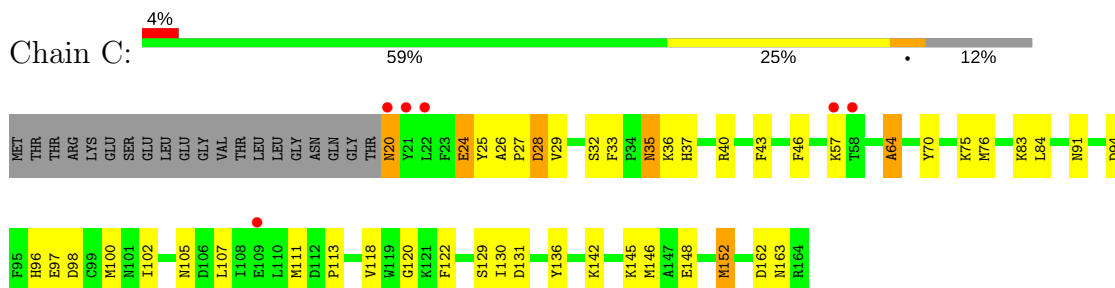
- Molecule 1: NADPH-dependent 7-cyano-7-deazaguanine reductase



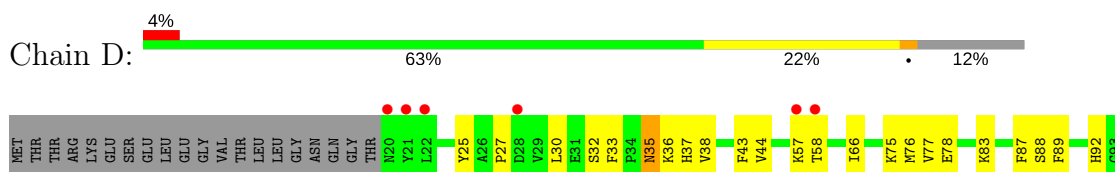
- Molecule 1: NADPH-dependent 7-cyano-7-deazaguanine reductase



- Molecule 1: NADPH-dependent 7-cyano-7-deazaguanine reductase

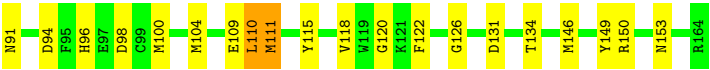


- Molecule 1: NADPH-dependent 7-cyano-7-deazaguanine reductase





● Molecule 1: NADPH-dependent 7-cyano-7-deazaguanine reductase



4 Data and refinement statistics

Property	Value	Source
Space group	P 32 2 1	Depositor
Cell constants a, b, c, α , β , γ	93.51Å 93.51Å 193.70Å 90.00° 90.00° 120.00°	Depositor
Resolution (Å)	41.56 – 2.50 41.56 – 2.50	Depositor EDS
% Data completeness (in resolution range)	98.7 (41.56-2.50) 98.8 (41.56-2.50)	Depositor EDS
R_{merge}	0.10	Depositor
R_{sym}	(Not available)	Depositor
$\langle I/\sigma(I) \rangle$ ¹	4.00 (at 2.51Å)	Xtriage
Refinement program	REFMAC 5.2.0019	Depositor
R, R_{free}	0.189 , 0.272 0.198 , 0.268	Depositor DCC
R_{free} test set	1720 reflections (5.03%)	wwPDB-VP
Wilson B-factor (Å ²)	44.2	Xtriage
Anisotropy	0.307	Xtriage
Bulk solvent k_{sol} (e/Å ³), B_{sol} (Å ²)	0.34 , 40.4	EDS
L-test for twinning ²	$\langle L \rangle = 0.49$, $\langle L^2 \rangle = 0.33$	Xtriage
Estimated twinning fraction	0.027 for -h,-k,l	Xtriage
F_o, F_c correlation	0.94	EDS
Total number of atoms	6272	wwPDB-VP
Average B, all atoms (Å ²)	42.0	wwPDB-VP

Xtriage's analysis on translational NCS is as follows: *The largest off-origin peak in the Patterson function is 4.56% of the height of the origin peak. No significant pseudotranslation is detected.*

¹Intensities estimated from amplitudes.

²Theoretical values of $\langle |L| \rangle$, $\langle L^2 \rangle$ for acentric reflections are 0.5, 0.333 respectively for untwinned datasets, and 0.375, 0.2 for perfectly twinned datasets.

5 Model quality [i](#)

5.1 Standard geometry [i](#)

Bond lengths and bond angles in the following residue types are not validated in this section: PE4, GD1, PO4, MG

The Z score for a bond length (or angle) is the number of standard deviations the observed value is removed from the expected value. A bond length (or angle) with $|Z| > 5$ is considered an outlier worth inspection. RMSZ is the root-mean-square of all Z scores of the bond lengths (or angles).

Mol	Chain	Bond lengths		Bond angles	
		RMSZ	# Z >5	RMSZ	# Z >5
1	A	1.19	3/1199 (0.3%)	0.98	2/1623 (0.1%)
1	B	1.19	2/1251 (0.2%)	0.99	4/1692 (0.2%)
1	C	1.15	3/1260 (0.2%)	0.89	0/1704
1	D	1.16	1/1251 (0.1%)	0.93	0/1692
1	E	1.18	1/1251 (0.1%)	0.93	1/1692 (0.1%)
All	All	1.17	10/6212 (0.2%)	0.94	7/8403 (0.1%)

All (10) bond length outliers are listed below:

Mol	Chain	Res	Type	Atoms	Z	Observed(Å)	Ideal(Å)
1	C	136	TYR	CD1-CE1	-5.77	1.30	1.39
1	B	115	TYR	CE1-CZ	5.63	1.45	1.38
1	A	99	CYS	CB-SG	-5.44	1.73	1.81
1	A	109	GLU	CD-OE1	5.43	1.31	1.25
1	E	55	CYS	CB-SG	5.30	1.91	1.82
1	C	91	ASN	CB-CG	5.14	1.62	1.51
1	B	31	GLU	CG-CD	5.08	1.59	1.51
1	C	64	ALA	CA-CB	5.05	1.63	1.52
1	A	78	GLU	CG-CD	5.05	1.59	1.51
1	D	148	GLU	CD-OE1	5.05	1.31	1.25

All (7) bond angle outliers are listed below:

Mol	Chain	Res	Type	Atoms	Z	Observed(°)	Ideal(°)
1	B	114	ARG	NE-CZ-NH1	5.94	123.27	120.30
1	A	40	ARG	NE-CZ-NH2	-5.86	117.37	120.30
1	B	40	ARG	NE-CZ-NH2	-5.43	117.58	120.30
1	B	100	MET	CG-SD-CE	-5.33	91.66	100.20
1	A	40	ARG	NE-CZ-NH1	5.10	122.85	120.30
1	E	150	ARG	NE-CZ-NH2	-5.07	117.77	120.30

Continued on next page...

Continued from previous page...

Mol	Chain	Res	Type	Atoms	Z	Observed(°)	Ideal(°)
1	B	114	ARG	NE-CZ-NH2	-5.06	117.77	120.30

There are no chirality outliers.

There are no planarity outliers.

5.2 Too-close contacts

In the following table, the Non-H and H(model) columns list the number of non-hydrogen atoms and hydrogen atoms in the chain respectively. The H(added) column lists the number of hydrogen atoms added and optimized by MolProbity. The Clashes column lists the number of clashes within the asymmetric unit, whereas Symm-Clashes lists symmetry related clashes.

Mol	Chain	Non-H	H(model)	H(added)	Clashes	Symm-Clashes
1	A	1161	0	1103	43	0
1	B	1213	0	1149	33	0
1	C	1222	0	1154	46	0
1	D	1213	0	1149	31	0
1	E	1213	0	1149	44	0
2	B	13	0	5	0	0
2	C	13	0	5	0	0
2	D	13	0	5	0	0
2	E	13	0	5	1	0
3	B	1	0	0	0	0
3	C	1	0	0	0	0
3	D	1	0	0	0	0
3	E	1	0	0	0	0
4	B	5	0	0	0	0
5	D	24	0	34	0	0
6	A	32	0	0	7	0
6	B	41	0	0	8	0
6	C	38	0	0	3	0
6	D	32	0	0	2	0
6	E	22	0	0	2	0
All	All	6272	0	5758	183	0

The all-atom clashscore is defined as the number of clashes found per 1000 atoms (including hydrogen atoms). The all-atom clashscore for this structure is 15.

All (183) close contacts within the same asymmetric unit are listed below, sorted by their clash magnitude.

Atom-1	Atom-2	Interatomic distance (Å)	Clash overlap (Å)
1:D:100:MET:HE2	1:D:120:GLY:CA	1.64	1.28
1:D:100:MET:CE	1:D:120:GLY:HA3	1.66	1.25
1:A:155:ASP:O	1:A:158:PRO:HD3	1.50	1.12
1:A:39:ASN:HB2	6:A:230:HOH:O	1.53	1.06
6:B:329:HOH:O	1:C:152:MET:HG3	1.56	1.04
1:C:70:TYR:CD2	1:C:111:MET:HE1	1.93	1.02
1:E:70:TYR:CZ	1:E:111:MET:HE1	1.93	1.01
1:D:100:MET:CE	1:D:120:GLY:CA	2.31	0.97
1:E:26:ALA:O	1:E:29:VAL:HG12	1.68	0.92
1:C:35:ASN:ND2	1:C:37:HIS:H	1.68	0.92
1:E:70:TYR:CE2	1:E:111:MET:HE2	2.05	0.92
1:E:70:TYR:CE2	1:E:111:MET:CE	2.57	0.88
1:A:130:ILE:HD12	1:E:42:TYR:CE2	2.10	0.85
1:C:100:MET:HE2	1:C:118:VAL:HG12	1.58	0.84
1:C:70:TYR:CE2	1:C:111:MET:HE1	2.14	0.81
1:A:35:ASN:ND2	1:A:37:HIS:H	1.78	0.81
1:D:100:MET:HE2	1:D:120:GLY:HA3	0.84	0.80
1:D:78:GLU:OE2	2:E:201:GD1:N9	2.12	0.79
1:B:70:TYR:CE2	1:B:111:MET:HE1	2.16	0.79
1:B:35:ASN:ND2	1:B:37:HIS:H	1.81	0.78
1:B:70:TYR:CE2	1:B:111:MET:CE	2.67	0.77
1:E:46:PHE:HE1	1:E:48:CYS:HB2	1.48	0.77
1:E:70:TYR:CZ	1:E:111:MET:CE	2.67	0.77
1:E:46:PHE:CE1	1:E:48:CYS:HB2	2.19	0.76
1:D:35:ASN:ND2	1:D:37:HIS:H	1.83	0.76
1:E:40:ARG:HD2	1:E:42:TYR:CE2	2.20	0.75
1:C:70:TYR:CE2	1:C:111:MET:CE	2.70	0.75
1:E:76:MET:HA	1:E:111:MET:HE3	1.71	0.71
1:E:39:ASN:ND2	1:E:39:ASN:H	1.89	0.71
1:D:75:LYS:O	1:D:111:MET:HE2	1.91	0.70
6:B:321:HOH:O	1:C:148:GLU:HG2	1.92	0.69
1:D:37:HIS:HE1	6:D:313:HOH:O	1.75	0.69
1:A:101:ASN:OD1	1:A:134:THR:HG21	1.93	0.68
1:D:92:HIS:HB2	6:D:320:HOH:O	1.93	0.68
1:B:87:PHE:HE2	6:B:306:HOH:O	1.76	0.67
1:E:40:ARG:HD2	1:E:42:TYR:CZ	2.30	0.67
1:E:115:TYR:CG	1:E:146:MET:CE	2.78	0.67
1:C:100:MET:HE2	1:C:118:VAL:CG1	2.25	0.67
1:E:62:ASP:OD2	1:E:96:HIS:HE1	1.76	0.67
1:C:162:ASP:O	1:C:163:ASN:HB2	1.93	0.67
1:E:70:TYR:CE2	1:E:111:MET:HE1	2.28	0.67
1:C:26:ALA:O	1:C:29:VAL:HG12	1.96	0.65

Continued on next page...

Continued from previous page...

Atom-1	Atom-2	Interatomic distance (Å)	Clash overlap (Å)
1:A:95:PHE:O	1:A:99:CYS:HB2	1.98	0.64
1:E:149:TYR:CE2	1:E:153:ASN:ND2	2.65	0.64
1:C:70:TYR:CD2	1:C:111:MET:CE	2.79	0.62
1:C:24:GLU:OE1	1:C:24:GLU:N	2.33	0.61
1:D:107:LEU:O	1:D:111:MET:HG3	1.99	0.61
1:B:105:ASN:CB	6:B:334:HOH:O	2.49	0.61
1:A:97:GLU:HB2	1:E:40:ARG:CZ	2.32	0.60
1:D:36:LYS:HE3	1:E:98:ASP:OD1	2.01	0.60
1:C:40:ARG:NH2	1:D:105:ASN:OD1	2.35	0.59
1:D:100:MET:CE	1:D:120:GLY:N	2.65	0.59
1:C:146:MET:HG3	1:D:152:MET:HG3	1.86	0.57
1:B:29:VAL:HG11	1:B:84:LEU:HB2	1.86	0.57
1:B:35:ASN:HD22	1:B:37:HIS:H	1.53	0.57
1:B:39:ASN:HB2	6:B:330:HOH:O	2.04	0.57
1:D:100:MET:HE2	1:D:120:GLY:N	2.18	0.57
1:A:130:ILE:HD12	1:E:42:TYR:HE2	1.69	0.57
1:B:105:ASN:HB2	6:B:334:HOH:O	2.03	0.57
1:B:100:MET:HE3	1:B:118:VAL:CG1	2.35	0.57
1:A:155:ASP:O	1:A:158:PRO:CD	2.41	0.56
1:C:100:MET:CE	1:C:118:VAL:HG12	2.34	0.56
1:B:40:ARG:NH2	1:C:105:ASN:OD1	2.26	0.56
1:A:91:ASN:HB3	6:A:224:HOH:O	2.05	0.56
1:A:57:LYS:HB2	1:A:57:LYS:HZ2	1.69	0.55
1:E:40:ARG:NH1	1:E:42:TYR:OH	2.28	0.54
6:B:329:HOH:O	1:C:152:MET:CG	2.30	0.54
1:C:35:ASN:HD22	1:C:36:LYS:N	2.05	0.54
1:A:55:CYS:SG	1:A:56:PRO:HD2	2.48	0.54
1:C:29:VAL:HG21	1:C:84:LEU:CB	2.38	0.53
1:A:97:GLU:OE1	1:E:40:ARG:HD3	2.07	0.53
1:E:37:HIS:HD2	6:E:310:HOH:O	1.90	0.53
1:D:75:LYS:O	1:D:111:MET:CE	2.56	0.53
1:C:100:MET:CE	1:C:118:VAL:CG1	2.86	0.52
1:C:111:MET:HE2	1:C:113:PRO:HB3	1.92	0.52
1:A:130:ILE:CD1	1:E:42:TYR:CE2	2.88	0.52
1:A:130:ILE:CG2	6:A:216:HOH:O	2.58	0.52
1:C:35:ASN:ND2	1:C:37:HIS:N	2.50	0.52
1:C:96:HIS:HB3	1:C:122:PHE:CE1	2.45	0.51
1:A:155:ASP:O	1:A:156:LEU:C	2.47	0.51
1:B:70:TYR:CE2	1:B:111:MET:HE2	2.44	0.51
1:B:70:TYR:CZ	1:B:111:MET:HE1	2.45	0.51
1:D:100:MET:HE1	1:D:120:GLY:CA	2.34	0.51

Continued on next page...

Continued from previous page...

Atom-1	Atom-2	Interatomic distance (Å)	Clash overlap (Å)
1:A:130:ILE:HG22	6:A:216:HOH:O	2.10	0.51
1:D:83:LYS:HD3	1:E:126:GLY:HA3	1.93	0.51
1:C:33:PHE:CE2	1:C:76:MET:HG3	2.46	0.51
1:E:44:VAL:HG22	1:E:70:TYR:CE1	2.46	0.51
1:D:77:VAL:N	1:D:111:MET:HE1	2.26	0.51
1:A:131:ASP:HB3	6:A:211:HOH:O	2.12	0.50
1:A:157:TYR:HB2	6:A:217:HOH:O	2.11	0.50
1:E:120:GLY:O	1:E:131:ASP:HA	2.12	0.50
1:C:70:TYR:CE2	1:C:111:MET:HE3	2.45	0.49
1:B:100:MET:HE3	1:B:118:VAL:HG12	1.93	0.49
1:E:70:TYR:OH	1:E:111:MET:HE1	2.12	0.49
1:C:98:ASP:O	1:C:102:ILE:HG13	2.11	0.49
1:A:67:TYR:HE1	1:A:121:LYS:HD2	1.77	0.49
1:B:83:LYS:HD2	1:B:87:PHE:CE1	2.47	0.49
1:C:35:ASN:C	1:C:35:ASN:HD22	2.15	0.49
1:B:70:TYR:HA	1:B:115:TYR:O	2.11	0.49
1:B:75:LYS:O	1:B:111:MET:HE3	2.13	0.49
1:A:35:ASN:HD22	1:A:35:ASN:C	2.17	0.49
1:A:125:ARG:CG	1:A:125:ARG:HH11	2.26	0.48
1:A:155:ASP:HA	1:A:158:PRO:HG3	1.95	0.48
1:E:77:VAL:N	1:E:111:MET:HE3	2.27	0.48
1:A:98:ASP:O	1:A:102:ILE:HG13	2.14	0.48
1:E:96:HIS:HB3	1:E:122:PHE:CE1	2.49	0.48
1:A:92:HIS:HB2	6:A:210:HOH:O	2.13	0.48
1:C:29:VAL:HG21	1:C:84:LEU:HB3	1.95	0.48
1:D:136:TYR:CD1	1:D:136:TYR:C	2.87	0.48
1:A:125:ARG:HH11	1:A:125:ARG:HG3	1.79	0.47
1:C:35:ASN:HD22	1:C:37:HIS:H	1.59	0.47
1:A:57:LYS:HZ2	1:A:57:LYS:CB	2.26	0.47
1:A:130:ILE:HD12	1:E:42:TYR:CD2	2.50	0.47
1:C:20:ASN:HB2	6:C:328:HOH:O	2.13	0.47
1:D:33:PHE:CE2	1:D:76:MET:HG3	2.50	0.47
1:D:32:SER:HA	1:D:76:MET:O	2.15	0.47
1:B:96:HIS:CD2	1:B:130:ILE:HD12	2.50	0.46
1:A:156:LEU:HD12	1:A:156:LEU:HA	1.26	0.46
1:D:25:TYR:HA	1:D:88:SER:O	2.15	0.46
1:D:77:VAL:H	1:D:111:MET:HE1	1.80	0.46
1:A:64:ALA:HB2	1:A:122:PHE:CD2	2.50	0.46
1:B:162:ASP:O	1:B:163:ASN:HB2	2.15	0.46
1:E:115:TYR:CD1	1:E:146:MET:CE	2.98	0.46
1:A:35:ASN:C	1:A:35:ASN:ND2	2.67	0.46

Continued on next page...

Continued from previous page...

Atom-1	Atom-2	Interatomic distance (Å)	Clash overlap (Å)
1:C:29:VAL:HG21	1:C:84:LEU:HB2	1.98	0.46
1:B:120:GLY:O	1:B:131:ASP:HA	2.16	0.45
1:C:64:ALA:HB2	1:C:122:PHE:CG	2.50	0.45
1:C:28:ASP:OD1	1:C:28:ASP:N	2.30	0.45
1:B:70:TYR:HE2	1:B:111:MET:CE	2.26	0.45
1:C:83:LYS:HD3	1:D:126:GLY:HA3	1.99	0.45
1:D:87:PHE:C	1:D:89:PHE:H	2.18	0.45
1:B:55:CYS:HB3	1:B:58:THR:OG1	2.17	0.45
1:E:100:MET:HE3	1:E:118:VAL:CG1	2.47	0.45
1:E:115:TYR:CD1	1:E:146:MET:HE3	2.52	0.45
1:D:66:ILE:HG12	1:D:100:MET:HE1	1.99	0.44
1:A:32:SER:HA	1:A:76:MET:O	2.18	0.44
1:B:100:MET:CE	1:B:118:VAL:HG12	2.47	0.44
1:D:25:TYR:CZ	1:D:27:PRO:HG3	2.52	0.44
1:A:54:LEU:HD23	1:A:54:LEU:HA	1.72	0.44
1:C:96:HIS:CD2	1:C:130:ILE:HD12	2.52	0.44
1:E:39:ASN:N	1:E:39:ASN:ND2	2.60	0.44
1:E:91:ASN:HB3	6:E:317:HOH:O	2.17	0.44
1:B:100:MET:HE1	1:B:120:GLY:CA	2.47	0.44
1:E:110:LEU:O	1:E:110:LEU:HG	2.17	0.44
1:C:107:LEU:O	1:C:111:MET:HB2	2.18	0.43
1:B:42:TYR:O	1:B:71:ILE:HA	2.18	0.43
1:C:64:ALA:HB2	1:C:122:PHE:CD2	2.53	0.43
1:C:32:SER:HA	1:C:76:MET:O	2.19	0.43
1:A:33:PHE:CE2	1:A:76:MET:HG3	2.53	0.43
1:A:35:ASN:HD22	1:A:36:LYS:N	2.16	0.43
1:C:25:TYR:CZ	1:C:27:PRO:HG3	2.52	0.43
1:C:75:LYS:NZ	6:C:327:HOH:O	2.51	0.43
1:C:75:LYS:HD2	6:C:327:HOH:O	2.18	0.42
1:B:105:ASN:HB3	6:B:334:HOH:O	2.17	0.42
1:B:47:ASN:HB2	1:C:129:SER:OG	2.19	0.42
1:E:115:TYR:CG	1:E:146:MET:HE3	2.52	0.42
1:B:68:ILE:HG12	1:B:118:VAL:HG22	2.01	0.42
1:E:66:ILE:HG23	1:E:100:MET:CE	2.49	0.42
1:E:76:MET:CA	1:E:111:MET:HE3	2.46	0.42
1:E:66:ILE:HG23	1:E:100:MET:HE3	2.02	0.42
1:C:35:ASN:C	1:C:35:ASN:ND2	2.73	0.42
1:C:46:PHE:HE1	1:C:70:TYR:HE1	1.68	0.42
1:A:96:HIS:ND1	1:A:130:ILE:HG12	2.35	0.42
1:B:44:VAL:HG21	1:C:97:GLU:HG2	2.02	0.42
1:D:154:HIS:CD2	1:D:155:ASP:HB2	2.55	0.41

Continued on next page...

Continued from previous page...

Atom-1	Atom-2	Interatomic distance (Å)	Clash overlap (Å)
1:E:35:ASN:HD22	1:E:36:LYS:N	2.18	0.41
1:D:30:LEU:HD23	1:D:30:LEU:HA	1.97	0.41
1:A:87:PHE:C	1:A:89:PHE:H	2.24	0.41
1:A:61:PRO:O	1:A:125:ARG:NH2	2.53	0.41
1:A:93:GLY:O	1:A:94:ASP:OD2	2.38	0.41
1:B:70:TYR:HE2	1:B:111:MET:HE1	1.78	0.41
1:E:37:HIS:N	1:E:37:HIS:CD2	2.87	0.41
1:A:84:LEU:O	1:A:85:TYR:C	2.58	0.41
1:B:115:TYR:HE1	1:B:147:ALA:HA	1.85	0.41
1:D:138:LYS:HA	1:D:139:PRO:HD3	1.90	0.41
1:A:108:ILE:O	1:A:109:GLU:C	2.59	0.40
1:A:87:PHE:C	1:A:89:PHE:N	2.75	0.40
1:B:100:MET:HE1	1:B:120:GLY:HA3	2.03	0.40
1:E:96:HIS:O	1:E:100:MET:HG2	2.21	0.40
1:A:138:LYS:HA	1:A:139:PRO:HD3	1.96	0.40
1:C:120:GLY:O	1:C:131:ASP:HA	2.22	0.40
1:E:104:MET:SD	1:E:134:THR:HG23	2.60	0.40
1:B:96:HIS:HD2	1:B:130:ILE:HD12	1.87	0.40

There are no symmetry-related clashes.

5.3 Torsion angles [i](#)

5.3.1 Protein backbone [i](#)

In the following table, the Percentiles column shows the percent Ramachandran outliers of the chain as a percentile score with respect to all X-ray entries followed by that with respect to entries of similar resolution.

The Analysed column shows the number of residues for which the backbone conformation was analysed, and the total number of residues.

Mol	Chain	Analysed	Favoured	Allowed	Outliers	Percentiles	
1	A	137/165 (83%)	130 (95%)	7 (5%)	0	100	100
1	B	143/165 (87%)	140 (98%)	3 (2%)	0	100	100
1	C	144/165 (87%)	140 (97%)	4 (3%)	0	100	100
1	D	143/165 (87%)	141 (99%)	2 (1%)	0	100	100
1	E	143/165 (87%)	141 (99%)	2 (1%)	0	100	100
All	All	710/825 (86%)	692 (98%)	18 (2%)	0	100	100

There are no Ramachandran outliers to report.

5.3.2 Protein sidechains ⓘ

In the following table, the Percentiles column shows the percent sidechain outliers of the chain as a percentile score with respect to all X-ray entries followed by that with respect to entries of similar resolution.

The Analysed column shows the number of residues for which the sidechain conformation was analysed, and the total number of residues.

Mol	Chain	Analysed	Rotameric	Outliers	Percentiles	
1	A	129/152 (85%)	112 (87%)	17 (13%)	4	8
1	B	135/152 (89%)	125 (93%)	10 (7%)	15	29
1	C	136/152 (90%)	126 (93%)	10 (7%)	15	29
1	D	135/152 (89%)	121 (90%)	14 (10%)	8	15
1	E	135/152 (89%)	122 (90%)	13 (10%)	9	18
All	All	670/760 (88%)	606 (90%)	64 (10%)	9	18

All (64) residues with a non-rotameric sidechain are listed below:

Mol	Chain	Res	Type
1	A	22	LEU
1	A	29	VAL
1	A	35	ASN
1	A	40	ARG
1	A	43	PHE
1	A	44	VAL
1	A	57	LYS
1	A	60	GLN
1	A	92	HIS
1	A	99	CYS
1	A	125	ARG
1	A	129	SER
1	A	130	ILE
1	A	136	TYR
1	A	145	LYS
1	A	155	ASP
1	A	156	LEU
1	B	24	GLU
1	B	28	ASP
1	B	35	ASN
1	B	43	PHE

Continued on next page...

Continued from previous page...

Mol	Chain	Res	Type
1	B	57	LYS
1	B	58	THR
1	B	60	GLN
1	B	94	ASP
1	B	109	GLU
1	B	145	LYS
1	C	20	ASN
1	C	24	GLU
1	C	28	ASP
1	C	35	ASN
1	C	43	PHE
1	C	57	LYS
1	C	94	ASP
1	C	142	LYS
1	C	145	LYS
1	C	152	MET
1	D	35	ASN
1	D	38	VAL
1	D	43	PHE
1	D	44	VAL
1	D	57	LYS
1	D	58	THR
1	D	94	ASP
1	D	98	ASP
1	D	109	GLU
1	D	111	MET
1	D	136	TYR
1	D	145	LYS
1	D	155	ASP
1	D	156	LEU
1	E	21	TYR
1	E	22	LEU
1	E	28	ASP
1	E	35	ASN
1	E	36	LYS
1	E	37	HIS
1	E	39	ASN
1	E	57	LYS
1	E	79	SER
1	E	94	ASP
1	E	109	GLU
1	E	110	LEU

Continued on next page...

Continued from previous page...

Mol	Chain	Res	Type
1	E	111	MET

Some sidechains can be flipped to improve hydrogen bonding and reduce clashes. All (15) such sidechains are listed below:

Mol	Chain	Res	Type
1	A	35	ASN
1	A	91	ASN
1	A	154	HIS
1	B	35	ASN
1	B	154	HIS
1	C	35	ASN
1	C	91	ASN
1	C	154	HIS
1	D	35	ASN
1	E	35	ASN
1	E	37	HIS
1	E	39	ASN
1	E	91	ASN
1	E	96	HIS
1	E	153	ASN

5.3.3 RNA [i](#)

There are no RNA molecules in this entry.

5.4 Non-standard residues in protein, DNA, RNA chains [i](#)

There are no non-standard protein/DNA/RNA residues in this entry.

5.5 Carbohydrates [i](#)

There are no carbohydrates in this entry.

5.6 Ligand geometry [i](#)

Of 10 ligands modelled in this entry, 4 are monoatomic - leaving 6 for Mogul analysis.

In the following table, the Counts columns list the number of bonds (or angles) for which Mogul statistics could be retrieved, the number of bonds (or angles) that are observed in the model and

the number of bonds (or angles) that are defined in the Chemical Component Dictionary. The Link column lists molecule types, if any, to which the group is linked. The Z score for a bond length (or angle) is the number of standard deviations the observed value is removed from the expected value. A bond length (or angle) with $|Z| > 2$ is considered an outlier worth inspection. RMSZ is the root-mean-square of all Z scores of the bond lengths (or angles).

Mol	Type	Chain	Res	Link	Bond lengths			Bond angles		
					Counts	RMSZ	# Z > 2	Counts	RMSZ	# Z > 2
2	GD1	B	201	1	11,14,14	1.58	1 (9%)	11,20,20	3.20	8 (72%)
4	PO4	B	203	-	4,4,4	1.97	3 (75%)	6,6,6	1.01	0
2	GD1	C	201	1	11,14,14	1.80	2 (18%)	11,20,20	3.15	5 (45%)
2	GD1	D	201	1	11,14,14	1.72	1 (9%)	11,20,20	3.33	7 (63%)
5	PE4	D	203	-	23,23,23	0.68	0	22,22,22	0.47	0
2	GD1	E	201	1	11,14,14	1.95	2 (18%)	11,20,20	3.19	8 (72%)

In the following table, the Chirals column lists the number of chiral outliers, the number of chiral centers analysed, the number of these observed in the model and the number defined in the Chemical Component Dictionary. Similar counts are reported in the Torsion and Rings columns. '-' means no outliers of that kind were identified.

Mol	Type	Chain	Res	Link	Chirals	Torsions	Rings
2	GD1	B	201	1	-	0/0/2/2	0/2/2/2
4	PO4	B	203	-	-	0/0/0/0	0/0/0/0
2	GD1	C	201	1	-	0/0/2/2	0/2/2/2
2	GD1	D	201	1	-	0/0/2/2	0/2/2/2
5	PE4	D	203	-	-	0/21/21/21	0/0/0/0
2	GD1	E	201	1	-	0/0/2/2	0/2/2/2

All (9) bond length outliers are listed below:

Mol	Chain	Res	Type	Atoms	Z	Observed(Å)	Ideal(Å)
4	B	203	PO4	P-O2	-2.12	1.46	1.54
4	B	203	PO4	P-O4	-2.12	1.46	1.54
4	B	203	PO4	P-O3	-2.09	1.47	1.54
2	C	201	GD1	C6-N1	2.23	1.37	1.33
2	E	201	GD1	C6-N1	3.07	1.38	1.33
2	B	201	GD1	O6-C6	4.16	1.35	1.24
2	D	201	GD1	O6-C6	4.85	1.36	1.24
2	E	201	GD1	O6-C6	5.09	1.37	1.24
2	C	201	GD1	O6-C6	5.17	1.37	1.24

All (28) bond angle outliers are listed below:

Mol	Chain	Res	Type	Atoms	Z	Observed(°)	Ideal(°)
2	C	201	GD1	C5-C6-N1	-6.58	118.03	124.07
2	B	201	GD1	N3-C2-N1	-5.78	118.93	127.41
2	D	201	GD1	N3-C2-N1	-5.41	119.48	127.41
2	D	201	GD1	C5-C6-N1	-5.37	119.14	124.07
2	E	201	GD1	C5-C6-N1	-4.86	119.61	124.07
2	E	201	GD1	N3-C2-N1	-4.74	120.46	127.41
2	E	201	GD1	C7-C77-N77	-4.20	115.90	122.24
2	C	201	GD1	N3-C2-N1	-4.16	121.31	127.41
2	B	201	GD1	C5-C6-N1	-3.19	121.14	124.07
2	C	201	GD1	C7-C5-C4	-3.02	101.30	106.56
2	D	201	GD1	C7-C5-C4	-2.90	101.52	106.56
2	E	201	GD1	C7-C5-C4	-2.62	102.00	106.56
2	B	201	GD1	C6-C5-C4	-2.40	113.67	115.02
2	B	201	GD1	C7-C5-C4	-2.14	102.83	106.56
2	E	201	GD1	N2-C2-N1	2.12	120.59	117.25
2	B	201	GD1	N2-C2-N3	2.19	121.76	117.75
2	B	201	GD1	C8-C7-C5	2.19	110.18	106.93
2	D	201	GD1	N2-C2-N1	2.57	121.29	117.25
2	C	201	GD1	C8-C7-C5	2.59	110.76	106.93
2	E	201	GD1	C8-C7-C5	2.76	111.02	106.93
2	D	201	GD1	C8-C7-C5	2.86	111.17	106.93
2	E	201	GD1	C2-N3-C4	3.15	118.84	115.16
2	D	201	GD1	C2-N3-C4	3.67	119.44	115.16
2	E	201	GD1	C6-N1-C2	3.99	121.80	116.06
2	B	201	GD1	C6-N1-C2	4.54	122.58	116.06
2	C	201	GD1	C6-N1-C2	4.64	122.73	116.06
2	B	201	GD1	C2-N3-C4	4.64	120.58	115.16
2	D	201	GD1	C6-N1-C2	4.95	123.17	116.06

There are no chirality outliers.

There are no torsion outliers.

There are no ring outliers.

1 monomer is involved in 1 short contact:

Mol	Chain	Res	Type	Clashes	Symm-Clashes
2	E	201	GD1	1	0

5.7 Other polymers [i](#)

There are no such residues in this entry.

5.8 Polymer linkage issues

There are no chain breaks in this entry.

6 Fit of model and data

6.1 Protein, DNA and RNA chains

In the following table, the column labelled ‘#RSRZ> 2’ contains the number (and percentage) of RSRZ outliers, followed by percent RSRZ outliers for the chain as percentile scores relative to all X-ray entries and entries of similar resolution. The OWAB column contains the minimum, median, 95th percentile and maximum values of the occupancy-weighted average B-factor per residue. The column labelled ‘Q< 0.9’ lists the number of (and percentage) of residues with an average occupancy less than 0.9.

Mol	Chain	Analysed	<RSRZ>	#RSRZ>2	OWAB(Å ²)	Q<0.9
1	A	139/165 (84%)	0.01	9 (6%) 19 20	27, 40, 73, 83	0
1	B	145/165 (87%)	-0.30	3 (2%) 63 66	20, 36, 53, 82	0
1	C	145/165 (87%)	-0.01	6 (4%) 37 40	26, 38, 57, 80	0
1	D	145/165 (87%)	-0.14	6 (4%) 37 40	27, 38, 61, 84	0
1	E	145/165 (87%)	-0.04	6 (4%) 37 40	27, 42, 63, 93	0
All	All	719/825 (87%)	-0.09	30 (4%) 36 39	20, 40, 65, 93	0

All (30) RSRZ outliers are listed below:

Mol	Chain	Res	Type	RSRZ
1	A	158	PRO	7.5
1	E	20	ASN	7.3
1	E	21	TYR	6.8
1	D	22	LEU	4.9
1	C	21	TYR	4.3
1	D	20	ASN	3.8
1	A	95	PHE	3.7
1	E	22	LEU	3.7
1	B	21	TYR	3.0
1	A	21	TYR	2.9
1	D	21	TYR	2.9
1	A	57	LYS	2.8
1	D	57	LYS	2.7
1	A	93	GLY	2.7
1	B	20	ASN	2.7
1	E	58	THR	2.6
1	A	56	PRO	2.6
1	A	20	ASN	2.5
1	B	58	THR	2.5
1	A	92	HIS	2.4

Continued on next page...

Continued from previous page...

Mol	Chain	Res	Type	RSRZ
1	C	20	ASN	2.4
1	D	58	THR	2.4
1	C	22	LEU	2.3
1	E	39	ASN	2.3
1	C	57	LYS	2.3
1	D	28	ASP	2.2
1	E	28	ASP	2.2
1	C	109[A]	GLU	2.2
1	A	157	TYR	2.2
1	C	58	THR	2.2

6.2 Non-standard residues in protein, DNA, RNA chains [i](#)

There are no non-standard protein/DNA/RNA residues in this entry.

6.3 Carbohydrates [i](#)

There are no carbohydrates in this entry.

6.4 Ligands [i](#)

In the following table, the Atoms column lists the number of modelled atoms in the group and the number defined in the chemical component dictionary. The B-factors column lists the minimum, median, 95th percentile and maximum values of B factors of atoms in the group. The column labelled 'Q< 0.9' lists the number of atoms with occupancy less than 0.9.

Mol	Type	Chain	Res	Atoms	RSCC	RSR	B-factors(Å ²)	Q<0.9
3	MG	B	202	1/1	0.68	0.12	53,53,53,53	0
5	PE4	D	203	24/24	0.83	0.23	63,89,94,94	0
2	GD1	E	201	13/13	0.85	0.25	68,69,70,71	0
2	GD1	B	201	13/13	0.88	0.28	56,58,59,60	0
3	MG	D	202	1/1	0.89	0.07	29,29,29,29	0
2	GD1	C	201	13/13	0.90	0.22	62,63,63,63	0
2	GD1	D	201	13/13	0.92	0.19	67,69,70,70	0
3	MG	E	202	1/1	0.94	0.06	36,36,36,36	0
3	MG	C	202	1/1	0.94	0.12	38,38,38,38	0
4	PO4	B	203	5/5	0.95	0.08	66,68,69,70	0

6.5 Other polymers [i](#)

There are no such residues in this entry.