



Full wwPDB X-ray Structure Validation Report ⓘ

Mar 9, 2018 – 02:52 pm GMT

PDB ID : 4FE2
Title : X-Ray Structure of SAICAR Synthetase (PurC) from *Streptococcus pneumoniae* complexed with AIR, ADP, Asp and Mg²⁺
Authors : Wolf, N.; Abad-Zapatero, C.; Johnson, M.E.; Fung, L.M.-W.
Deposited on : 2012-05-29
Resolution : 2.29 Å(reported)

This is a Full wwPDB X-ray Structure Validation Report for a publicly released PDB entry.

We welcome your comments at validation@mail.wwpdb.org

A user guide is available at

<https://www.wwpdb.org/validation/2017/XrayValidationReportHelp>

with specific help available everywhere you see the ⓘ symbol.

The following versions of software and data (see [references ⓘ](#)) were used in the production of this report:

MolProbity : 4.02b-467
Mogul : 1.7.3 (157068), CSD as539be (2018)
Xtriage (Phenix) : 1.13
EDS : trunk30967
Percentile statistics : 20171227.v01 (using entries in the PDB archive December 27th 2017)
Refmac : 5.8.0158
CCP4 : 7.0 (Gargrove)
Ideal geometry (proteins) : Engh & Huber (2001)
Ideal geometry (DNA, RNA) : Parkinson et al. (1996)
Validation Pipeline (wwPDB-VP) : trunk30967

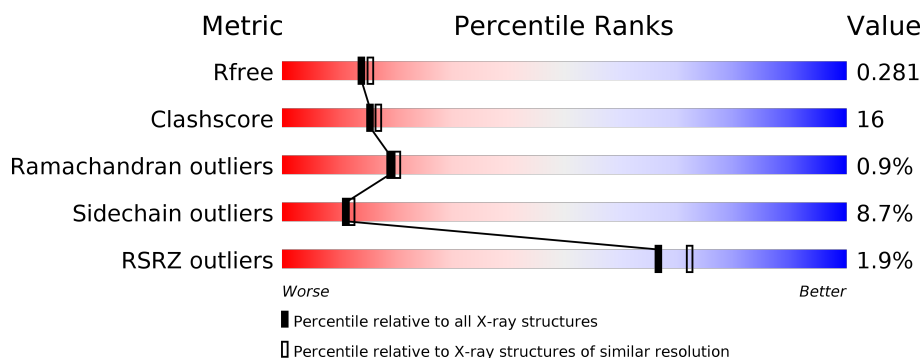
1 Overall quality at a glance

The following experimental techniques were used to determine the structure:

X-RAY DIFFRACTION

The reported resolution of this entry is 2.29 Å.

Percentile scores (ranging between 0-100) for global validation metrics of the entry are shown in the following graphic. The table shows the number of entries on which the scores are based.



Metric	Whole archive (#Entries)	Similar resolution (#Entries, resolution range(Å))
R_{free}	111664	6121 (2.30-2.26)
Clashscore	122126	6842 (2.30-2.26)
Ramachandran outliers	120053	6755 (2.30-2.26)
Sidechain outliers	120020	6755 (2.30-2.26)
RSRZ outliers	108989	5992 (2.30-2.26)

The table below summarises the geometric issues observed across the polymeric chains and their fit to the electron density. The red, orange, yellow and green segments on the lower bar indicate the fraction of residues that contain outliers for ≥ 3 , 2, 1 and 0 types of geometric quality criteria. A grey segment represents the fraction of residues that are not modelled. The numeric value for each fraction is indicated below the corresponding segment, with a dot representing fractions $\leq 5\%$. The upper red bar (where present) indicates the fraction of residues that have poor fit to the electron density. The numeric value is given above the bar.

Mol	Chain	Length	Quality of chain
1	A	255	
1	B	255	

The following table lists non-polymeric compounds, carbohydrate monomers and non-standard residues in protein, DNA, RNA chains that are outliers for geometric or electron-density-fit criteria:

Mol	Type	Chain	Res	Chirality	Geometry	Clashes	Electron density
5	144	A	308	-	-	X	-
5	144	B	304	-	-	X	-
7	ASP	A	306	-	-	X	-

2 Entry composition

There are 9 unique types of molecules in this entry. The entry contains 4356 atoms, of which 0 are hydrogens and 0 are deuteriums.

In the tables below, the ZeroOcc column contains the number of atoms modelled with zero occupancy, the AltConf column contains the number of residues with at least one atom in alternate conformation and the Trace column contains the number of residues modelled with at most 2 atoms.

- Molecule 1 is a protein called Phosphoribosylaminoimidazole-succinocarboxamide synthase.

Mol	Chain	Residues	Atoms					ZeroOcc	AltConf	Trace
1	A	233	Total	C	N	O	S	0	0	0
			1894	1220	308	364	2			
1	B	235	Total	C	N	O	S	0	0	0
			1908	1228	310	367	3			

There are 40 discrepancies between the modelled and reference sequences:

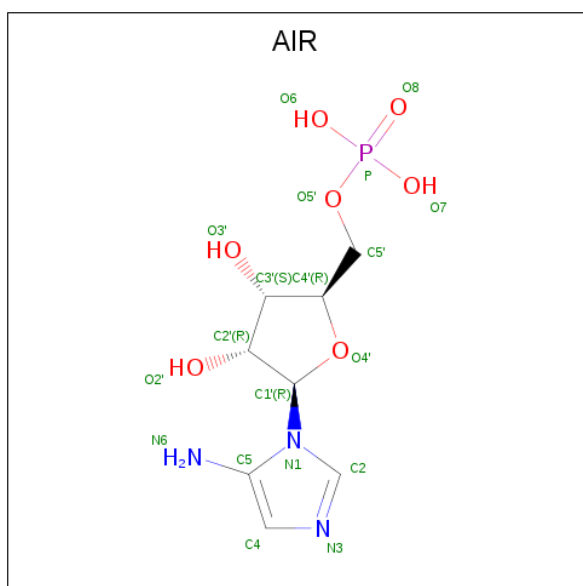
Chain	Residue	Modelled	Actual	Comment	Reference
A	-19	MET	-	EXPRESSION TAG	UNP Q07296
A	-18	GLY	-	EXPRESSION TAG	UNP Q07296
A	-17	SER	-	EXPRESSION TAG	UNP Q07296
A	-16	SER	-	EXPRESSION TAG	UNP Q07296
A	-15	HIS	-	EXPRESSION TAG	UNP Q07296
A	-14	HIS	-	EXPRESSION TAG	UNP Q07296
A	-13	HIS	-	EXPRESSION TAG	UNP Q07296
A	-12	HIS	-	EXPRESSION TAG	UNP Q07296
A	-11	HIS	-	EXPRESSION TAG	UNP Q07296
A	-10	HIS	-	EXPRESSION TAG	UNP Q07296
A	-9	SER	-	EXPRESSION TAG	UNP Q07296
A	-8	SER	-	EXPRESSION TAG	UNP Q07296
A	-7	GLY	-	EXPRESSION TAG	UNP Q07296
A	-6	LEU	-	EXPRESSION TAG	UNP Q07296
A	-5	VAL	-	EXPRESSION TAG	UNP Q07296
A	-4	PRO	-	EXPRESSION TAG	UNP Q07296
A	-3	ARG	-	EXPRESSION TAG	UNP Q07296
A	-2	GLY	-	EXPRESSION TAG	UNP Q07296
A	-1	SER	-	EXPRESSION TAG	UNP Q07296
A	0	HIS	-	EXPRESSION TAG	UNP Q07296
B	-19	MET	-	EXPRESSION TAG	UNP Q07296
B	-18	GLY	-	EXPRESSION TAG	UNP Q07296
B	-17	SER	-	EXPRESSION TAG	UNP Q07296
B	-16	SER	-	EXPRESSION TAG	UNP Q07296
B	-15	HIS	-	EXPRESSION TAG	UNP Q07296

Continued on next page...

Continued from previous page...

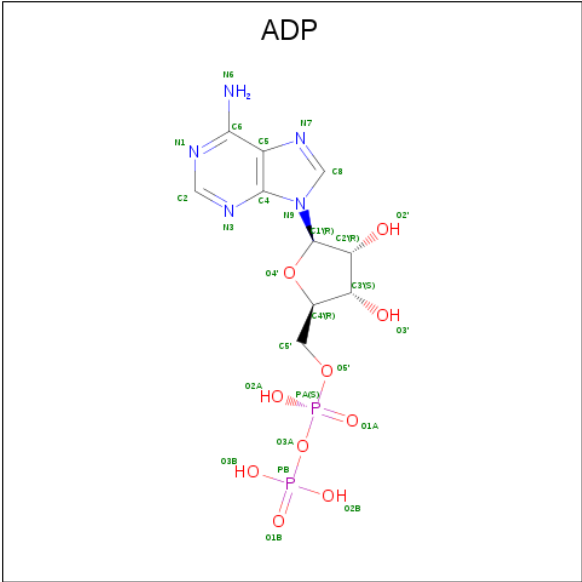
Chain	Residue	Modelled	Actual	Comment	Reference
B	-14	HIS	-	EXPRESSION TAG	UNP Q07296
B	-13	HIS	-	EXPRESSION TAG	UNP Q07296
B	-12	HIS	-	EXPRESSION TAG	UNP Q07296
B	-11	HIS	-	EXPRESSION TAG	UNP Q07296
B	-10	HIS	-	EXPRESSION TAG	UNP Q07296
B	-9	SER	-	EXPRESSION TAG	UNP Q07296
B	-8	SER	-	EXPRESSION TAG	UNP Q07296
B	-7	GLY	-	EXPRESSION TAG	UNP Q07296
B	-6	LEU	-	EXPRESSION TAG	UNP Q07296
B	-5	VAL	-	EXPRESSION TAG	UNP Q07296
B	-4	PRO	-	EXPRESSION TAG	UNP Q07296
B	-3	ARG	-	EXPRESSION TAG	UNP Q07296
B	-2	GLY	-	EXPRESSION TAG	UNP Q07296
B	-1	SER	-	EXPRESSION TAG	UNP Q07296
B	0	HIS	-	EXPRESSION TAG	UNP Q07296

- Molecule 2 is 5-AMINOIMIDAZOLE RIBONUCLEOTIDE (three-letter code: AIR) (formula: $C_8H_{14}N_3O_7P$).



Mol	Chain	Residues	Atoms					ZeroOcc	AltConf
2	A	1	Total	C	N	O	P	0	0
			19	8	3	7	1		
2	B	1	Total	C	N	O	P	0	0
			19	8	3	7	1		

- Molecule 3 is ADENOSINE-5'-DIPHOSPHATE (three-letter code: ADP) (formula: $C_{10}H_{15}N_5O_{10}P_2$).

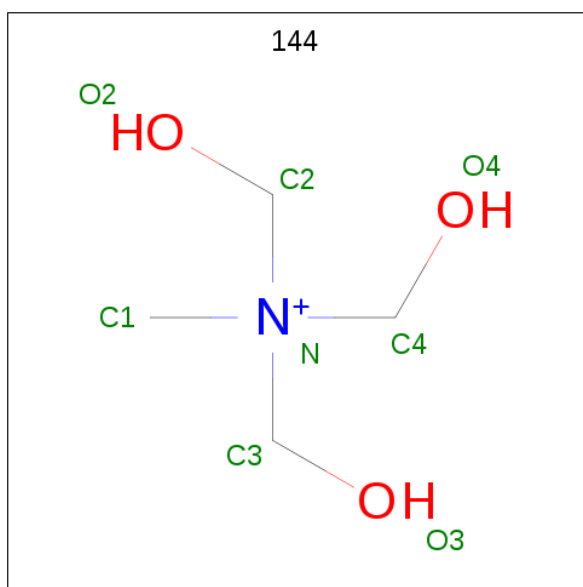


Mol	Chain	Residues	Atoms					ZeroOcc	AltConf
3	A	1	Total	C	N	O	P	0	0
			27	10	5	10	2		
3	B	1	Total	C	N	O	P	0	0
			27	10	5	10	2		

- Molecule 4 is MAGNESIUM ION (three-letter code: MG) (formula: Mg).

Mol	Chain	Residues	Atoms		ZeroOcc	AltConf
4	B	1	Total	Mg	0	0
			1	1		
4	A	1	Total	Mg	0	0
			1	1		

- Molecule 5 is TRIS-HYDROXYMETHYL-METHYL-AMMONIUM (three-letter code: 144) (formula: C₄H₁₂NO₃).

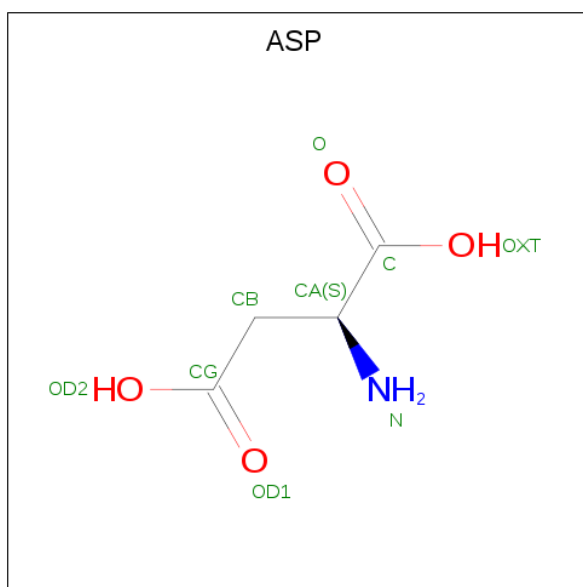


Mol	Chain	Residues	Atoms				ZeroOcc	AltConf
5	A	1	Total	C	N	O	0	0
			8	4	1	3		
5	A	1	Total	C	N	O	0	0
			8	4	1	3		
5	A	1	Total	C	N	O	0	0
			8	4	1	3		
5	B	1	Total	C	N	O	0	0
			8	4	1	3		

- Molecule 6 is CHLORIDE ION (three-letter code: CL) (formula: Cl).

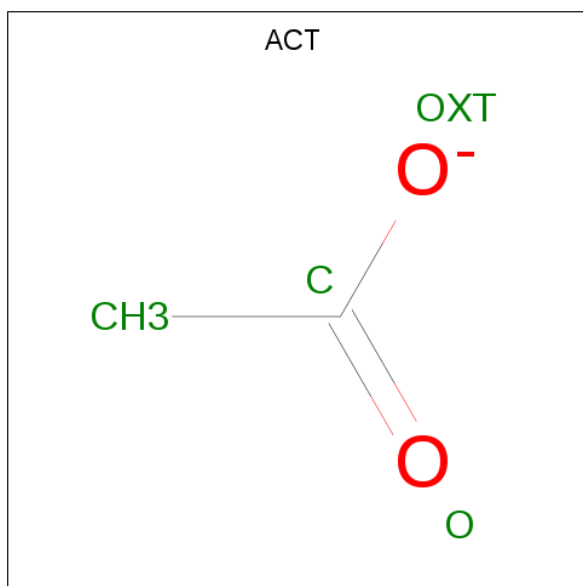
Mol	Chain	Residues	Atoms		ZeroOcc	AltConf
6	A	1	Total	Cl	0	0
			1	1		

- Molecule 7 is ASPARTIC ACID (three-letter code: ASP) (formula: C₄H₇NO₄).



Mol	Chain	Residues	Atoms				ZeroOcc	AltConf
7	A	1	Total	C	N	O	0	0
			9	4	1	4		

- Molecule 8 is ACETATE ION (three-letter code: ACT) (formula: $C_2H_3O_2$).



Mol	Chain	Residues	Atoms			ZeroOcc	AltConf
8	B	1	Total	C	O	0	0
			4	2	2		

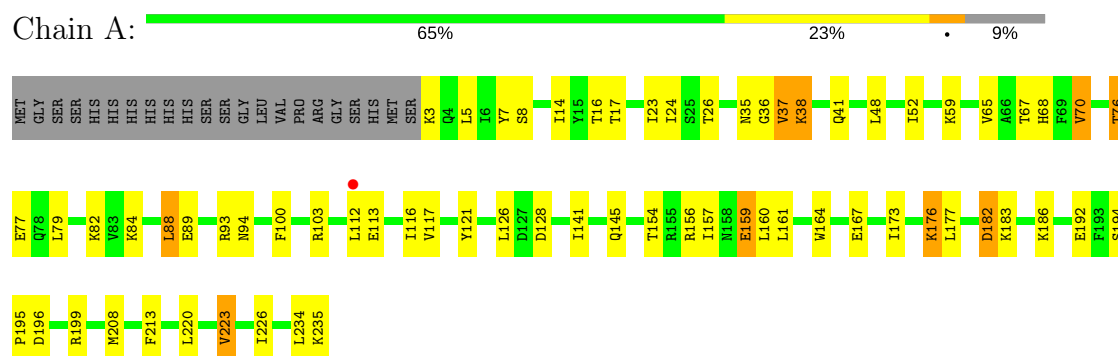
- Molecule 9 is water.

Mol	Chain	Residues	Atoms		ZeroOcc	AltConf
9	A	210	Total 210	O 210	0	0
9	B	204	Total 204	O 204	0	0

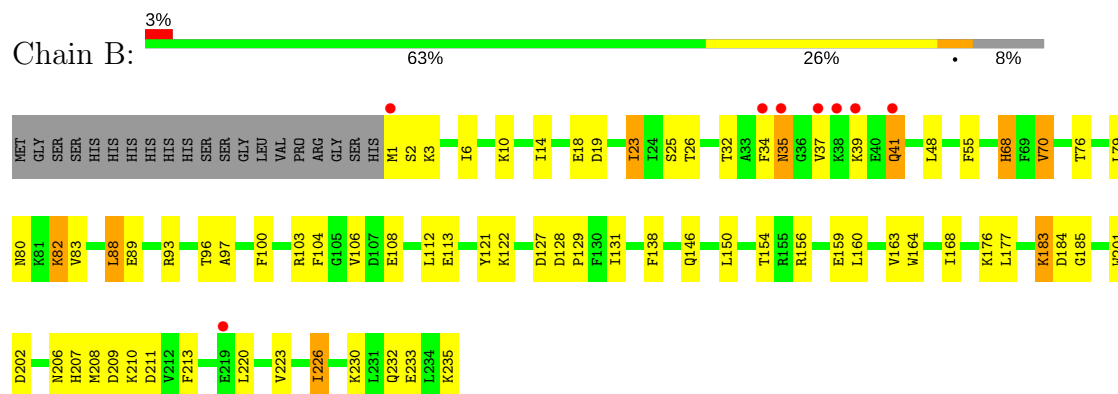
3 Residue-property plots [i](#)

These plots are drawn for all protein, RNA and DNA chains in the entry. The first graphic for a chain summarises the proportions of the various outlier classes displayed in the second graphic. The second graphic shows the sequence view annotated by issues in geometry and electron density. Residues are color-coded according to the number of geometric quality criteria for which they contain at least one outlier: green = 0, yellow = 1, orange = 2 and red = 3 or more. A red dot above a residue indicates a poor fit to the electron density ($RSRZ > 2$). Stretches of 2 or more consecutive residues without any outlier are shown as a green connector. Residues present in the sample, but not in the model, are shown in grey.

- Molecule 1: Phosphoribosylaminoimidazole-succinocarboxamide synthase



- Molecule 1: Phosphoribosylaminoimidazole-succinocarboxamide synthase



4 Data and refinement statistics

Property	Value	Source
Space group	P 1 21 1	Depositor
Cell constants a, b, c, α , β , γ	46.07Å 65.02Å 86.05Å 90.00° 92.09° 90.00°	Depositor
Resolution (Å)	85.99 – 2.29 37.58 – 2.29	Depositor EDS
% Data completeness (in resolution range)	98.5 (85.99-2.29) 98.5 (37.58-2.29)	Depositor EDS
R_{merge}	0.08	Depositor
R_{sym}	0.08	Depositor
$\langle I/\sigma(I) \rangle$ ¹	5.86 (at 2.29Å)	Xtriage
Refinement program	REFMAC 5.6.0117	Depositor
R, R_{free}	0.196 , 0.284 0.195 , 0.281	Depositor DCC
R_{free} test set	1164 reflections (5.11%)	wwPDB-VP
Wilson B-factor (Å ²)	23.4	Xtriage
Anisotropy	0.811	Xtriage
Bulk solvent k_{sol} (e/Å ³), B_{sol} (Å ²)	0.35 , 51.4	EDS
L-test for twinning ²	$\langle L \rangle = 0.50$, $\langle L^2 \rangle = 0.33$	Xtriage
Estimated twinning fraction	0.027 for h,-k,-l	Xtriage
F_o, F_c correlation	0.94	EDS
Total number of atoms	4356	wwPDB-VP
Average B, all atoms (Å ²)	27.0	wwPDB-VP

Xtriage's analysis on translational NCS is as follows: *The largest off-origin peak in the Patterson function is 19.18% of the height of the origin peak. No significant pseudotranslation is detected.*

¹Intensities estimated from amplitudes.

²Theoretical values of $\langle |L| \rangle$, $\langle L^2 \rangle$ for acentric reflections are 0.5, 0.333 respectively for untwinned datasets, and 0.375, 0.2 for perfectly twinned datasets.

5 Model quality ⓘ

5.1 Standard geometry ⓘ

Bond lengths and bond angles in the following residue types are not validated in this section: 144, ADP, CL, MG, AIR, ACT

The Z score for a bond length (or angle) is the number of standard deviations the observed value is removed from the expected value. A bond length (or angle) with $|Z| > 5$ is considered an outlier worth inspection. RMSZ is the root-mean-square of all Z scores of the bond lengths (or angles).

Mol	Chain	Bond lengths		Bond angles	
		RMSZ	$\# Z > 5$	RMSZ	$\# Z > 5$
1	A	0.86	0/1929	0.87	1/2599 (0.0%)
1	B	0.83	1/1943 (0.1%)	0.90	4/2617 (0.2%)
All	All	0.84	1/3872 (0.0%)	0.89	5/5216 (0.1%)

All (1) bond length outliers are listed below:

Mol	Chain	Res	Type	Atoms	Z	Observed(Å)	Ideal(Å)
1	B	164	TRP	CD2-CE2	5.70	1.48	1.41

All (5) bond angle outliers are listed below:

Mol	Chain	Res	Type	Atoms	Z	Observed(°)	Ideal(°)
1	A	182	ASP	CB-CG-OD1	6.48	124.13	118.30
1	B	156	ARG	NE-CZ-NH2	-5.85	117.38	120.30
1	B	88	LEU	CA-CB-CG	5.52	128.00	115.30
1	B	156	ARG	NE-CZ-NH1	5.24	122.92	120.30
1	B	103	ARG	NE-CZ-NH2	-5.03	117.79	120.30

There are no chirality outliers.

There are no planarity outliers.

5.2 Too-close contacts ⓘ

In the following table, the Non-H and H(model) columns list the number of non-hydrogen atoms and hydrogen atoms in the chain respectively. The H(added) column lists the number of hydrogen atoms added and optimized by MolProbity. The Clashes column lists the number of clashes within the asymmetric unit, whereas Symm-Clashes lists symmetry related clashes.

Mol	Chain	Non-H	H(model)	H(added)	Clashes	Symm-Clashes
1	A	1894	0	1884	51	0
1	B	1908	0	1901	69	0
2	A	19	0	12	2	0
2	B	19	0	12	0	0
3	A	27	0	12	3	0
3	B	27	0	12	4	0
4	A	1	0	0	0	0
4	B	1	0	0	0	0
5	A	24	0	36	9	0
5	B	8	0	12	7	0
6	A	1	0	0	0	0
7	A	9	0	3	5	0
8	B	4	0	3	0	0
9	A	210	0	0	12	0
9	B	204	0	0	13	0
All	All	4356	0	3887	124	0

The all-atom clashscore is defined as the number of clashes found per 1000 atoms (including hydrogen atoms). The all-atom clashscore for this structure is 16.

All (124) close contacts within the same asymmetric unit are listed below, sorted by their clash magnitude.

Atom-1	Atom-2	Interatomic distance (Å)	Clash overlap (Å)
1:B:208:MET:CE	1:B:226:ILE:HG21	1.74	1.18
1:B:129:PRO:HB3	5:B:304:144:H11	1.35	1.09
1:B:100:PHE:HD2	9:B:549:HOH:O	1.39	1.04
1:B:223:VAL:O	1:B:226:ILE:HG22	1.57	1.03
1:A:156:ARG:HD2	5:A:307:144:H32	1.36	1.03
1:B:208:MET:HE1	1:B:226:ILE:HG21	1.40	1.00
2:A:301:AIR:HC4	7:A:306:ASP:N	1.77	0.99
1:B:89:GLU:HG2	9:B:559:HOH:O	1.64	0.96
1:B:129:PRO:CB	5:B:304:144:H11	1.96	0.96
5:A:307:144:H31	9:A:579:HOH:O	1.68	0.93
1:B:23:ILE:HD13	1:B:82:LYS:HG3	1.50	0.92
1:A:94:ASN:O	5:A:308:144:H12	1.67	0.92
1:B:208:MET:CE	1:B:226:ILE:CG2	2.48	0.91
1:B:70:VAL:HG13	1:B:79:LEU:O	1.71	0.90
5:A:308:144:H41	9:A:523:HOH:O	1.73	0.87
1:B:213:PHE:HB2	1:B:220:LEU:HD12	1.61	0.83
1:B:10:LYS:HG3	3:B:302:ADP:O2B	1.78	0.83
1:A:235:LYS:HB3	9:A:513:HOH:O	1.77	0.82
1:A:159:GLU:HG2	9:A:481:HOH:O	1.82	0.80

Continued on next page...

Continued from previous page...

Atom-1	Atom-2	Interatomic distance (Å)	Clash overlap (Å)
1:A:103:ARG:HA	5:B:304:144:H42	1.69	0.75
1:B:100:PHE:CD2	9:B:549:HOH:O	2.24	0.73
1:B:93:ARG:HD3	9:B:404:HOH:O	1.87	0.72
1:A:84:LYS:HE3	9:A:450:HOH:O	1.89	0.71
1:B:32:THR:HG22	1:B:39:LYS:HG2	1.73	0.70
1:B:208:MET:HE3	1:B:226:ILE:CG2	2.22	0.69
1:A:94:ASN:O	5:A:308:144:C1	2.40	0.69
1:B:208:MET:HE3	1:B:226:ILE:HG21	1.75	0.68
1:A:65:VAL:HG22	9:A:579:HOH:O	1.94	0.68
1:A:70:VAL:HG13	1:A:79:LEU:O	1.94	0.67
1:B:68:HIS:HD2	3:B:302:ADP:HN61	1.40	0.67
1:A:14:ILE:HG23	1:A:23:ILE:HD13	1.76	0.67
1:A:89:GLU:HG2	1:A:176:LYS:HD3	1.77	0.66
1:B:2:SER:OG	1:B:18:GLU:HG2	1.96	0.66
1:B:208:MET:HA	1:B:223:VAL:HG11	1.76	0.66
1:B:208:MET:HA	1:B:223:VAL:CG1	2.26	0.64
1:A:156:ARG:CD	5:A:307:144:H32	2.21	0.63
1:A:113:GLU:HB3	9:A:462:HOH:O	1.99	0.62
1:B:34:PHE:O	1:B:37:VAL:HG23	1.99	0.62
1:B:55:PHE:HE1	1:B:235:LYS:HG3	1.63	0.62
1:A:76:THR:HG22	1:A:77:GLU:HG3	1.83	0.60
1:B:122:LYS:C	1:B:122:LYS:HD3	2.21	0.59
1:B:210:LYS:HE3	9:B:565:HOH:O	2.02	0.59
3:A:302:ADP:O1B	7:A:306:ASP:HB2	2.03	0.58
1:B:129:PRO:HB3	5:B:304:144:C1	2.22	0.58
1:A:37:VAL:O	1:A:38:LYS:CB	2.51	0.58
1:A:194:SER:OG	1:A:196:ASP:HB2	2.05	0.57
1:B:2:SER:OG	1:B:18:GLU:CG	2.53	0.57
1:B:25:SER:OG	1:B:80:ASN:ND2	2.37	0.57
1:B:23:ILE:CD1	1:B:82:LYS:HE2	2.35	0.57
1:A:112:LEU:O	5:A:308:144:H11	2.03	0.57
1:B:183:LYS:HD2	1:B:184:ASP:CG	2.25	0.56
1:B:55:PHE:CE1	1:B:235:LYS:HG3	2.41	0.56
1:A:23:ILE:HG23	1:A:82:LYS:HB2	1.88	0.56
1:A:26:THR:HG23	1:A:76:THR:CG2	2.36	0.56
1:B:26:THR:HG23	1:B:76:THR:CG2	2.37	0.55
1:A:154:THR:HG23	1:A:177:LEU:HD12	1.89	0.54
1:A:234:LEU:HD22	9:A:508:HOH:O	2.07	0.54
1:A:208:MET:CE	1:A:223:VAL:HG22	2.38	0.54
1:B:183:LYS:HD2	1:B:184:ASP:OD1	2.07	0.54
1:A:121:TYR:O	1:A:128:ASP:HA	2.06	0.54

Continued on next page...

Continued from previous page...

Atom-1	Atom-2	Interatomic distance (Å)	Clash overlap (Å)
1:B:68:HIS:CD2	3:B:302:ADP:HN61	2.22	0.54
1:B:96:THR:HB	9:B:549:HOH:O	2.07	0.54
1:B:208:MET:HE2	1:B:226:ILE:HD12	1.89	0.53
1:B:232:GLN:O	1:B:235:LYS:HB2	2.07	0.53
1:B:121:TYR:O	1:B:128:ASP:HA	2.10	0.51
1:A:164:TRP:HB3	1:A:234:LEU:HD11	1.92	0.50
1:B:154:THR:HG23	1:B:177:LEU:HD12	1.93	0.50
1:B:230:LYS:O	1:B:233:GLU:HG2	2.11	0.50
1:B:209:ASP:OD2	1:B:211:ASP:HB2	2.11	0.50
1:A:116:ILE:HD11	1:B:138:PHE:HB2	1.93	0.50
1:A:176:LYS:HE3	9:A:409:HOH:O	2.11	0.49
1:B:97:ALA:HA	1:B:108:GLU:HG2	1.95	0.49
1:B:207:HIS:HD2	9:B:474:HOH:O	1.96	0.49
1:A:126:LEU:HD13	1:B:104:PHE:HA	1.94	0.48
5:B:304:144:H41	9:B:543:HOH:O	2.14	0.48
2:A:301:AIR:C4	7:A:306:ASP:N	2.63	0.48
1:A:3:LYS:HE3	1:A:16:THR:HG23	1.96	0.47
1:A:176:LYS:HZ3	7:A:306:ASP:HA	1.80	0.47
1:A:37:VAL:HG12	1:A:38:LYS:H	1.79	0.47
1:B:208:MET:HE3	1:B:223:VAL:HG13	1.95	0.47
1:B:202:ASP:OD1	1:B:202:ASP:C	2.53	0.47
1:A:89:GLU:CG	1:A:176:LYS:HD3	2.44	0.46
1:A:157:ILE:O	1:A:161:LEU:HG	2.15	0.46
1:B:122:LYS:HB2	9:B:559:HOH:O	2.14	0.46
1:B:41:GLN:HG2	9:B:446:HOH:O	2.15	0.46
1:A:84:LYS:HD2	9:A:577:HOH:O	2.15	0.46
1:B:226:ILE:HD13	1:B:230:LYS:HD3	1.98	0.46
1:A:5:LEU:HD21	1:A:8:SER:HB2	1.98	0.46
1:B:129:PRO:CA	5:B:304:144:H11	2.46	0.46
1:B:70:VAL:HG13	1:B:79:LEU:C	2.36	0.45
1:B:23:ILE:HD13	1:B:82:LYS:HE2	1.97	0.45
1:B:23:ILE:HD11	1:B:82:LYS:HE2	1.98	0.45
1:B:129:PRO:CB	5:B:304:144:C1	2.82	0.44
1:B:122:LYS:HG2	9:B:520:HOH:O	2.15	0.44
1:A:17:THR:HG22	1:A:24:ILE:HD12	1.98	0.44
1:A:59:LYS:NZ	9:A:508:HOH:O	2.50	0.44
1:A:182:ASP:HB2	9:A:570:HOH:O	2.18	0.44
1:B:159:GLU:O	1:B:163:VAL:HG23	2.18	0.44
1:B:35:ASN:HB2	9:B:530:HOH:O	2.18	0.44
1:B:185:GLY:CA	9:B:523:HOH:O	2.66	0.43
1:B:26:THR:HG23	1:B:76:THR:HG22	2.00	0.43

Continued on next page...

Continued from previous page...

Atom-1	Atom-2	Interatomic distance (Å)	Clash overlap (Å)
1:B:201:TRP:HA	1:B:206:ASN:O	2.19	0.43
1:A:52:ILE:HG21	1:A:195:PRO:HD3	2.01	0.43
1:A:176:LYS:NZ	7:A:306:ASP:OXT	2.50	0.43
1:A:37:VAL:O	1:A:38:LYS:HB3	2.17	0.42
1:A:213:PHE:HB2	1:A:220:LEU:HD12	2.01	0.42
1:B:6:ILE:CD1	1:B:23:ILE:HD11	2.49	0.42
1:A:112:LEU:H	5:A:308:144:C1	2.32	0.42
1:A:173:ILE:HB	1:A:199:ARG:HB2	2.02	0.41
1:A:88:LEU:HD13	1:A:141:ILE:HG21	2.02	0.41
1:B:208:MET:HE2	1:B:226:ILE:CG2	2.44	0.41
1:B:146:GLN:O	1:B:150:LEU:HG	2.21	0.41
1:A:7:TYR:CD2	3:A:302:ADP:H4'	2.56	0.41
1:A:36:GLY:C	1:A:37:VAL:O	2.59	0.41
1:A:70:VAL:CG1	1:A:79:LEU:O	2.64	0.41
1:B:112:LEU:O	1:B:113:GLU:C	2.57	0.41
1:A:7:TYR:HD2	3:A:302:ADP:H4'	1.86	0.41
1:B:121:TYR:HB2	1:B:131:ILE:HD13	2.03	0.41
1:B:19:ASP:OD1	1:B:19:ASP:C	2.59	0.41
1:A:176:LYS:HE2	1:A:176:LYS:HB3	1.82	0.41
1:B:6:ILE:HD11	1:B:23:ILE:HD11	2.03	0.41
1:A:94:ASN:HB3	5:A:308:144:H22	2.03	0.41
1:A:93:ARG:CZ	1:A:100:PHE:HB2	2.52	0.40
1:B:83:VAL:HG22	3:B:302:ADP:C6	2.55	0.40

There are no symmetry-related clashes.

5.3 Torsion angles [i](#)

5.3.1 Protein backbone [i](#)

In the following table, the Percentiles column shows the percent Ramachandran outliers of the chain as a percentile score with respect to all X-ray entries followed by that with respect to entries of similar resolution.

The Analysed column shows the number of residues for which the backbone conformation was analysed, and the total number of residues.

Mol	Chain	Analysed	Favoured	Allowed	Outliers	Percentiles	
1	A	231/255 (91%)	217 (94%)	11 (5%)	3 (1%)	13	12
1	B	233/255 (91%)	219 (94%)	13 (6%)	1 (0%)	36	43

Continued on next page...

Continued from previous page...

Mol	Chain	Analysed	Favoured	Allowed	Outliers	Percentiles	
All	All	464/510 (91%)	436 (94%)	24 (5%)	4 (1%)	19	20

All (4) Ramachandran outliers are listed below:

Mol	Chain	Res	Type
1	A	37	VAL
1	B	35	ASN
1	A	35	ASN
1	A	38	LYS

5.3.2 Protein sidechains ⓘ

In the following table, the Percentiles column shows the percent sidechain outliers of the chain as a percentile score with respect to all X-ray entries followed by that with respect to entries of similar resolution.

The Analysed column shows the number of residues for which the sidechain conformation was analysed, and the total number of residues.

Mol	Chain	Analysed	Rotameric	Outliers	Percentiles	
1	A	205/224 (92%)	187 (91%)	18 (9%)	11	12
1	B	207/224 (92%)	190 (92%)	17 (8%)	12	14
All	All	412/448 (92%)	377 (92%)	35 (8%)	11	13

All (35) residues with a non-rotameric sidechain are listed below:

Mol	Chain	Res	Type
1	A	41	GLN
1	A	48	LEU
1	A	67	THR
1	A	68	HIS
1	A	70	VAL
1	A	76	THR
1	A	88	LEU
1	A	117	VAL
1	A	145	GLN
1	A	159	GLU
1	A	160	LEU
1	A	167	GLU
1	A	176	LYS
1	A	183	LYS

Continued on next page...

Continued from previous page...

Mol	Chain	Res	Type
1	A	186	LYS
1	A	192	GLU
1	A	223	VAL
1	A	226	ILE
1	B	1	MET
1	B	3	LYS
1	B	14	ILE
1	B	23	ILE
1	B	41	GLN
1	B	48	LEU
1	B	68	HIS
1	B	70	VAL
1	B	82	LYS
1	B	88	LEU
1	B	106	VAL
1	B	127	ASP
1	B	160	LEU
1	B	168	ILE
1	B	176	LYS
1	B	183	LYS
1	B	226	ILE

Some sidechains can be flipped to improve hydrogen bonding and reduce clashes. All (7) such sidechains are listed below:

Mol	Chain	Res	Type
1	A	30	GLN
1	B	4	GLN
1	B	21	ASN
1	B	61	ASN
1	B	68	HIS
1	B	78	GLN
1	B	80	ASN

5.3.3 RNA ⓘ

There are no RNA molecules in this entry.

5.4 Non-standard residues in protein, DNA, RNA chains ⓘ

There are no non-standard protein/DNA/RNA residues in this entry.

5.5 Carbohydrates [i](#)

There are no carbohydrates in this entry.

5.6 Ligand geometry [i](#)

Of 13 ligands modelled in this entry, 3 are monoatomic - leaving 10 for Mogul analysis.

In the following table, the Counts columns list the number of bonds (or angles) for which Mogul statistics could be retrieved, the number of bonds (or angles) that are observed in the model and the number of bonds (or angles) that are defined in the Chemical Component Dictionary. The Link column lists molecule types, if any, to which the group is linked. The Z score for a bond length (or angle) is the number of standard deviations the observed value is removed from the expected value. A bond length (or angle) with $|Z| > 2$ is considered an outlier worth inspection. RMSZ is the root-mean-square of all Z scores of the bond lengths (or angles).

Mol	Type	Chain	Res	Link	Bond lengths			Bond angles		
					Counts	RMSZ	# Z > 2	Counts	RMSZ	# Z > 2
2	AIR	A	301	-	15,20,20	0.90	1 (6%)	18,30,30	1.45	3 (16%)
3	ADP	A	302	4	25,29,29	1.20	4 (16%)	25,45,45	2.33	6 (24%)
5	144	A	304	-	1,7,7	0.65	0	3,9,9	0.12	0
7	ASP	A	306	4	1,8,8	0.17	0	1,10,10	0.22	0
5	144	A	307	-	1,7,7	0.49	0	3,9,9	0.24	0
5	144	A	308	-	1,7,7	1.14	0	3,9,9	1.11	0
2	AIR	B	301	-	15,20,20	1.01	1 (6%)	18,30,30	1.68	4 (22%)
3	ADP	B	302	4	25,29,29	1.53	4 (16%)	25,45,45	2.41	8 (32%)
5	144	B	304	-	1,7,7	1.26	0	3,9,9	0.54	0
8	ACT	B	305	-	1,3,3	1.91	0	0,3,3	0.00	-

In the following table, the Chirals column lists the number of chiral outliers, the number of chiral centers analysed, the number of these observed in the model and the number defined in the Chemical Component Dictionary. Similar counts are reported in the Torsion and Rings columns. '-' means no outliers of that kind were identified.

Mol	Type	Chain	Res	Link	Chirals	Torsions	Rings
2	AIR	A	301	-	-	0/6/26/26	0/2/2/2
3	ADP	A	302	4	-	0/12/32/32	0/3/3/3
5	144	A	304	-	-	0/0/9/9	0/0/0/0
7	ASP	A	306	4	-	0/2/8/8	0/0/0/0
5	144	A	307	-	-	0/0/9/9	0/0/0/0
5	144	A	308	-	-	0/0/9/9	0/0/0/0
2	AIR	B	301	-	-	0/6/26/26	0/2/2/2
3	ADP	B	302	4	-	0/12/32/32	0/3/3/3
5	144	B	304	-	-	0/0/9/9	0/0/0/0

Continued on next page...

Continued from previous page...

Mol	Type	Chain	Res	Link	Chirals	Torsions	Rings
8	ACT	B	305	-	-	0/0/0/0	0/0/0/0

All (10) bond length outliers are listed below:

Mol	Chain	Res	Type	Atoms	Z	Observed(Å)	Ideal(Å)
3	A	302	ADP	O4'-C1'	2.12	1.44	1.41
3	B	302	ADP	C4-N3	2.23	1.38	1.35
3	A	302	ADP	PB-O3A	2.30	1.63	1.60
3	A	302	ADP	C5-C4	2.63	1.46	1.40
3	A	302	ADP	C4-N3	2.75	1.39	1.35
2	A	301	AIR	O4'-C1'	2.83	1.45	1.41
2	B	301	AIR	O4'-C1'	2.90	1.45	1.41
3	B	302	ADP	O4'-C1'	3.38	1.46	1.41
3	B	302	ADP	C5-C4	3.55	1.48	1.40
3	B	302	ADP	PB-O3A	3.68	1.65	1.60

All (21) bond angle outliers are listed below:

Mol	Chain	Res	Type	Atoms	Z	Observed(°)	Ideal(°)
3	A	302	ADP	N3-C2-N1	-8.35	121.72	128.86
3	B	302	ADP	N3-C2-N1	-7.46	122.48	128.86
3	B	302	ADP	C4'-O4'-C1'	-4.89	104.73	109.83
3	B	302	ADP	O3'-C3'-C4'	-4.00	99.48	111.06
3	A	302	ADP	PA-O3A-PB	-3.06	122.35	132.63
2	B	301	AIR	O6-P-O5'	-2.78	99.33	106.73
3	B	302	ADP	PA-O3A-PB	-2.75	123.38	132.63
3	A	302	ADP	O4'-C4'-C5'	-2.72	100.32	109.39
3	B	302	ADP	C4-C5-N7	-2.71	106.79	109.41
2	B	301	AIR	N3-C2-N1	-2.54	108.39	112.18
3	A	302	ADP	O5'-PA-O1A	-2.51	99.27	109.07
2	A	301	AIR	N3-C2-N1	-2.24	108.83	112.18
2	B	301	AIR	P-O5'-C5'	2.17	124.27	118.30
2	A	301	AIR	P-O5'-C5'	2.63	125.55	118.30
3	A	302	ADP	C2-N1-C6	2.64	123.23	118.75
3	B	302	ADP	O3B-PB-O2B	2.66	118.11	107.59
2	A	301	AIR	C4-N3-C2	2.70	109.99	105.78
3	B	302	ADP	O2'-C2'-C3'	2.71	120.49	111.83
3	A	302	ADP	O2'-C2'-C3'	3.09	121.73	111.83
3	B	302	ADP	C2-N1-C6	3.40	124.53	118.75
2	B	301	AIR	C4-N3-C2	4.20	112.34	105.78

There are no chirality outliers.

There are no torsion outliers.

There are no ring outliers.

7 monomers are involved in 27 short contacts:

Mol	Chain	Res	Type	Clashes	Symm-Clashes
2	A	301	AIR	2	0
3	A	302	ADP	3	0
7	A	306	ASP	5	0
5	A	307	144	3	0
5	A	308	144	6	0
3	B	302	ADP	4	0
5	B	304	144	7	0

5.7 Other polymers [i](#)

There are no such residues in this entry.

5.8 Polymer linkage issues [i](#)

There are no chain breaks in this entry.

6 Fit of model and data [i](#)

6.1 Protein, DNA and RNA chains [i](#)

In the following table, the column labelled ‘#RSRZ > 2’ contains the number (and percentage) of RSRZ outliers, followed by percent RSRZ outliers for the chain as percentile scores relative to all X-ray entries and entries of similar resolution. The OWAB column contains the minimum, median, 95th percentile and maximum values of the occupancy-weighted average B-factor per residue. The column labelled ‘Q < 0.9’ lists the number of (and percentage) of residues with an average occupancy less than 0.9.

Mol	Chain	Analysed	<RSRZ>	#RSRZ>2	OWAB(Å ²)	Q<0.9
1	A	233/255 (91%)	-0.07	1 (0%) 92 94	13, 23, 42, 63	0
1	B	235/255 (92%)	0.10	8 (3%) 45 51	13, 25, 52, 99	0
All	All	468/510 (91%)	0.01	9 (1%) 66 72	13, 24, 46, 99	0

All (9) RSRZ outliers are listed below:

Mol	Chain	Res	Type	RSRZ
1	B	37	VAL	5.8
1	B	34	PHE	3.6
1	B	38	LYS	3.3
1	B	41	GLN	2.8
1	B	39	LYS	2.5
1	A	112	LEU	2.4
1	B	1	MET	2.3
1	B	35	ASN	2.1
1	B	219	GLU	2.1

6.2 Non-standard residues in protein, DNA, RNA chains [i](#)

There are no non-standard protein/DNA/RNA residues in this entry.

6.3 Carbohydrates [i](#)

There are no carbohydrates in this entry.

6.4 Ligands [i](#)

In the following table, the Atoms column lists the number of modelled atoms in the group and the number defined in the chemical component dictionary. The B-factors column lists the minimum,

median, 95th percentile and maximum values of B factors of atoms in the group. The column labelled 'Q< 0.9' lists the number of atoms with occupancy less than 0.9.

Mol	Type	Chain	Res	Atoms	RSCC	RSR	B-factors(Å ²)	Q<0.9
5	144	A	304	8/8	0.61	0.29	52,56,57,59	0
5	144	A	308	8/8	0.78	0.26	36,40,44,49	0
7	ASP	A	306	9/9	0.80	0.26	45,47,51,57	0
5	144	B	304	8/8	0.83	0.25	40,48,49,51	0
5	144	A	307	8/8	0.88	0.19	44,51,52,53	0
8	ACT	B	305	4/4	0.92	0.21	38,42,45,47	0
4	MG	A	303	1/1	0.94	0.12	30,30,30,30	0
3	ADP	B	302	27/27	0.95	0.10	17,23,34,37	0
3	ADP	A	302	27/27	0.95	0.11	16,23,27,29	0
4	MG	B	303	1/1	0.95	0.05	27,27,27,27	0
2	AIR	B	301	19/19	0.96	0.11	22,27,32,35	0
2	AIR	A	301	19/19	0.97	0.13	21,27,34,36	0
6	CL	A	305	1/1	0.99	0.07	22,22,22,22	0

6.5 Other polymers [i](#)

There are no such residues in this entry.