



Full wwPDB X-ray Structure Validation Report ⓘ

Mar 10, 2018 – 09:12 am GMT

PDB ID : 2FS8
Title : Human beta-tryptase II with inhibitor CRA-29382
Authors : Somoza, J.R.
Deposited on : 2006-01-21
Resolution : 2.50 Å(reported)

This is a Full wwPDB X-ray Structure Validation Report for a publicly released PDB entry.

We welcome your comments at validation@mail.wwpdb.org

A user guide is available at

<https://www.wwpdb.org/validation/2017/XrayValidationReportHelp>

with specific help available everywhere you see the ⓘ symbol.

The following versions of software and data (see [references ⓘ](#)) were used in the production of this report:

MolProbity : 4.02b-467
Mogul : 1.7.3 (157068), CSD as539be (2018)
Xtriage (Phenix) : 1.13
EDS : trunk30967
Percentile statistics : 20171227.v01 (using entries in the PDB archive December 27th 2017)
Refmac : 5.8.0158
CCP4 : 7.0 (Gargrove)
Ideal geometry (proteins) : Engh & Huber (2001)
Ideal geometry (DNA, RNA) : Parkinson et al. (1996)
Validation Pipeline (wwPDB-VP) : trunk30967

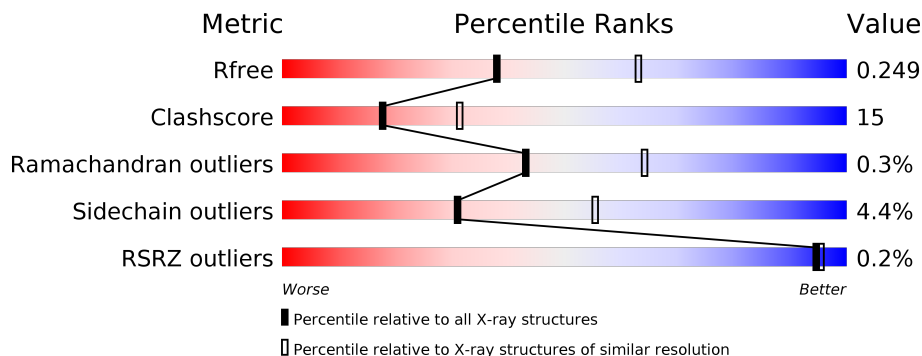
1 Overall quality at a glance

The following experimental techniques were used to determine the structure:

X-RAY DIFFRACTION

The reported resolution of this entry is 2.50 Å.

Percentile scores (ranging between 0-100) for global validation metrics of the entry are shown in the following graphic. The table shows the number of entries on which the scores are based.



Metric	Whole archive (#Entries)	Similar resolution (#Entries, resolution range(Å))
R_{free}	111664	4155 (2.50-2.50)
Clashscore	122126	4827 (2.50-2.50)
Ramachandran outliers	120053	4735 (2.50-2.50)
Sidechain outliers	120020	4737 (2.50-2.50)
RSRZ outliers	108989	4058 (2.50-2.50)

The table below summarises the geometric issues observed across the polymeric chains and their fit to the electron density. The red, orange, yellow and green segments on the lower bar indicate the fraction of residues that contain outliers for ≥ 3 , 2, 1 and 0 types of geometric quality criteria. A grey segment represents the fraction of residues that are not modelled. The numeric value for each fraction is indicated below the corresponding segment, with a dot representing fractions $\leq 5\%$. The upper red bar (where present) indicates the fraction of residues that have poor fit to the electron density. The numeric value is given above the bar.

Mol	Chain	Length	Quality of chain
1	A	245	<div> <div>71%</div> <div>26%</div> <div>..</div> </div>
1	B	245	<div> <div>75%</div> <div>22%</div> <div>..</div> </div>
1	C	245	<div> <div>71%</div> <div>27%</div> <div>..</div> </div>
1	D	245	<div> <div>68%</div> <div>28%</div> <div>..</div> </div>

2 Entry composition [i](#)

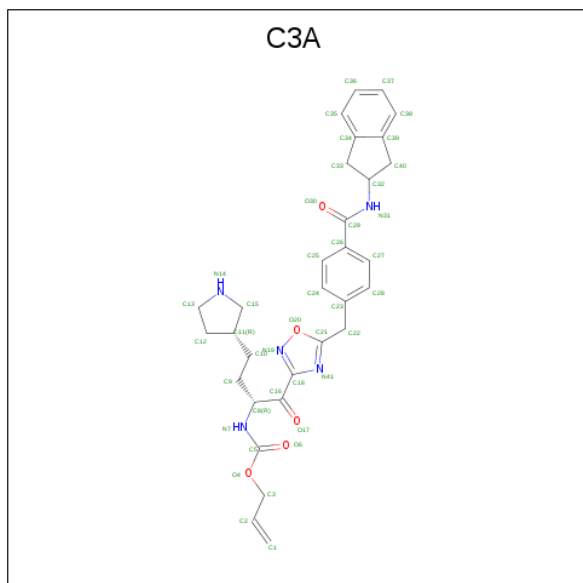
There are 3 unique types of molecules in this entry. The entry contains 8040 atoms, of which 0 are hydrogens and 0 are deuteriums.

In the tables below, the ZeroOcc column contains the number of atoms modelled with zero occupancy, the AltConf column contains the number of residues with at least one atom in alternate conformation and the Trace column contains the number of residues modelled with at most 2 atoms.

- Molecule 1 is a protein called Tryptase beta-2.

Mol	Chain	Residues	Atoms					ZeroOcc	AltConf	Trace
1	A	243	Total	C	N	O	S	0	0	0
			1920	1230	338	340	12			
1	B	243	Total	C	N	O	S	0	0	0
			1920	1230	338	340	12			
1	C	243	Total	C	N	O	S	0	0	0
			1920	1230	338	340	12			
1	D	243	Total	C	N	O	S	0	0	0
			1920	1230	338	340	12			

- Molecule 2 is ALLYL {(1S)-1-[(5-{4-[(2,3-DIHYDRO-1H-INDEN-2-YLAMINO)CARBONYL]BENZYL}-1,2,4-OXADIAZOL-3-YL)CARBONYL]-3-PYRROLIDIN-3-YLPROPYL}CARBAMATE (three-letter code: C3A) (formula: C₃₁H₃₅N₅O₅).



Mol	Chain	Residues	Atoms				ZeroOcc	AltConf
2	A	1	Total	C	N	O	0	0
			41	31	5	5		

Continued on next page...

Continued from previous page...

Mol	Chain	Residues	Atoms				ZeroOcc	AltConf
2	B	1	Total	C	N	O	0	0
			41	31	5	5		
2	C	1	Total	C	N	O	0	0
			41	31	5	5		
2	D	1	Total	C	N	O	0	0
			41	31	5	5		

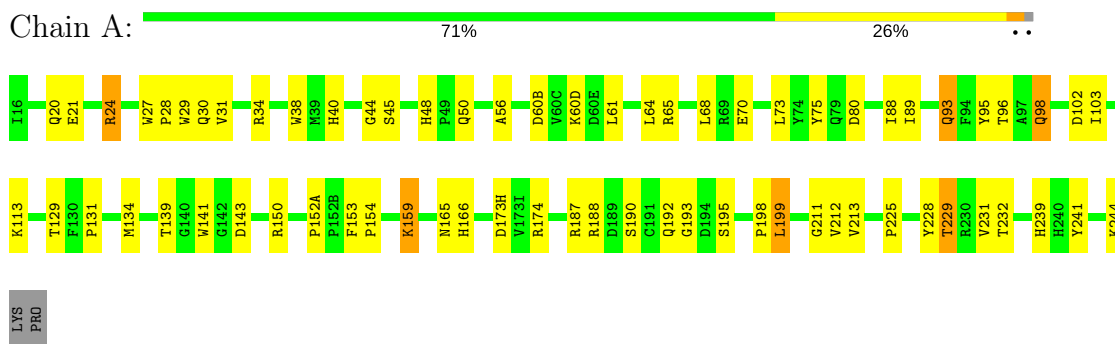
- Molecule 3 is water.

Mol	Chain	Residues	Atoms		ZeroOcc	AltConf
3	A	52	Total	O	0	0
			52	52		
3	B	43	Total	O	0	0
			43	43		
3	C	66	Total	O	0	0
			66	66		
3	D	35	Total	O	0	0
			35	35		

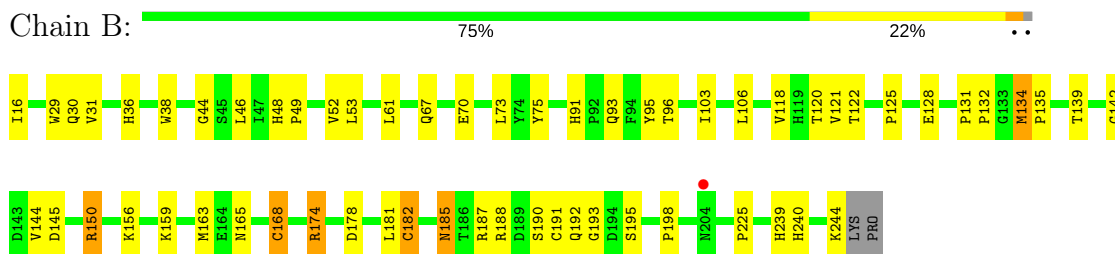
3 Residue-property plots

These plots are drawn for all protein, RNA and DNA chains in the entry. The first graphic for a chain summarises the proportions of the various outlier classes displayed in the second graphic. The second graphic shows the sequence view annotated by issues in geometry and electron density. Residues are color-coded according to the number of geometric quality criteria for which they contain at least one outlier: green = 0, yellow = 1, orange = 2 and red = 3 or more. A red dot above a residue indicates a poor fit to the electron density ($RSRZ > 2$). Stretches of 2 or more consecutive residues without any outlier are shown as a green connector. Residues present in the sample, but not in the model, are shown in grey.

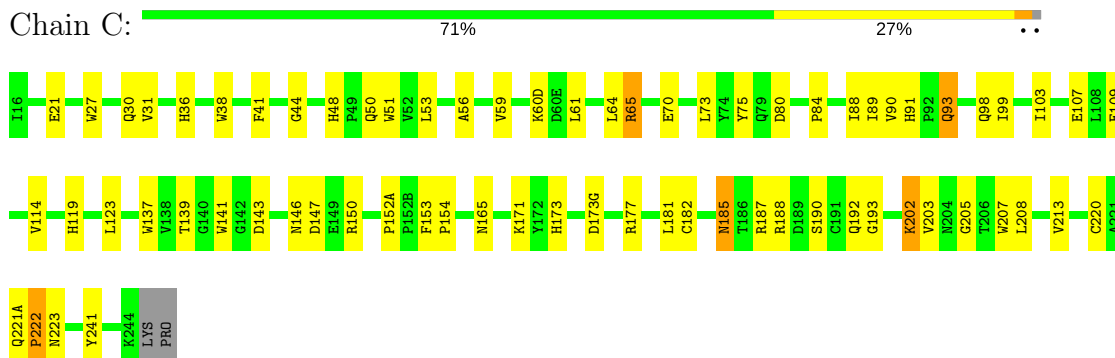
• Molecule 1: Tryptase beta-2



• Molecule 1: Tryptase beta-2



• Molecule 1: Tryptase beta-2



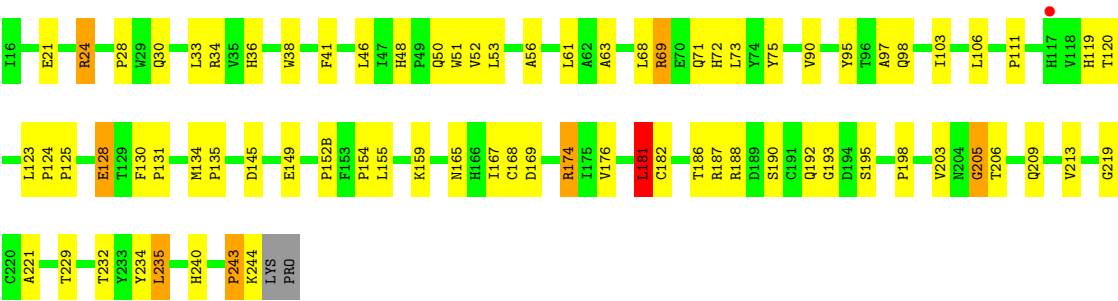
• Molecule 1: Tryptase beta-2

Chain D:

68%

28%

..



4 Data and refinement statistics

Property	Value	Source
Space group	P 31	Depositor
Cell constants a, b, c, α , β , γ	78.20Å 78.20Å 165.52Å 90.00° 90.00° 120.00°	Depositor
Resolution (Å)	42.78 – 2.50 42.77 – 2.50	Depositor EDS
% Data completeness (in resolution range)	92.7 (42.78-2.50) 92.7 (42.77-2.50)	Depositor EDS
R_{merge}	0.10	Depositor
R_{sym}	(Not available)	Depositor
$\langle I/\sigma(I) \rangle$ ¹	2.11 (at 2.51Å)	Xtriage
Refinement program	CNS	Depositor
R, R_{free}	0.205 , 0.250 0.205 , 0.249	Depositor DCC
R_{free} test set	3931 reflections (10.06%)	wwPDB-VP
Wilson B-factor (Å ²)	27.6	Xtriage
Anisotropy	0.357	Xtriage
Bulk solvent k_{sol} (e/Å ³), B_{sol} (Å ²)	0.32 , 11.8	EDS
L-test for twinning ²	$\langle L \rangle = 0.50$, $\langle L^2 \rangle = 0.33$	Xtriage
Estimated twinning fraction	0.016 for -h,-k,l 0.480 for h,-h-k,-l 0.019 for -k,-h,-l	Xtriage
F_o, F_c correlation	0.94	EDS
Total number of atoms	8040	wwPDB-VP
Average B, all atoms (Å ²)	29.0	wwPDB-VP

Xtriage's analysis on translational NCS is as follows: *The largest off-origin peak in the Patterson function is 4.11% of the height of the origin peak. No significant pseudotranslation is detected.*

¹Intensities estimated from amplitudes.

²Theoretical values of $\langle |L| \rangle$, $\langle L^2 \rangle$ for acentric reflections are 0.5, 0.333 respectively for untwinned datasets, and 0.375, 0.2 for perfectly twinned datasets.

5 Model quality [i](#)

5.1 Standard geometry [i](#)

Bond lengths and bond angles in the following residue types are not validated in this section: C3A

The Z score for a bond length (or angle) is the number of standard deviations the observed value is removed from the expected value. A bond length (or angle) with $|Z| > 5$ is considered an outlier worth inspection. RMSZ is the root-mean-square of all Z scores of the bond lengths (or angles).

Mol	Chain	Bond lengths		Bond angles	
		RMSZ	$\# Z > 5$	RMSZ	$\# Z > 5$
1	A	0.53	0/1985	0.77	3/2720 (0.1%)
1	B	0.50	1/1985 (0.1%)	0.71	0/2720
1	C	0.48	0/1985	0.71	0/2720
1	D	0.49	0/1985	0.70	1/2720 (0.0%)
All	All	0.50	1/7940 (0.0%)	0.72	4/10880 (0.0%)

Chiral center outliers are detected by calculating the chiral volume of a chiral center and verifying if the center is modelled as a planar moiety or with the opposite hand. A planarity outlier is detected by checking planarity of atoms in a peptide group, atoms in a mainchain group or atoms of a sidechain that are expected to be planar.

Mol	Chain	#Chirality outliers	#Planarity outliers
1	A	0	1
1	B	0	1
1	D	0	1
All	All	0	3

All (1) bond length outliers are listed below:

Mol	Chain	Res	Type	Atoms	Z	Observed(Å)	Ideal(Å)
1	B	195	SER	CB-OG	6.23	1.50	1.42

All (4) bond angle outliers are listed below:

Mol	Chain	Res	Type	Atoms	Z	Observed(°)	Ideal(°)
1	A	173(H)	ASP	CB-CG-OD2	10.08	127.38	118.30
1	A	173(H)	ASP	CB-CG-OD1	-5.66	113.20	118.30
1	D	181	LEU	CA-CB-CG	5.42	127.76	115.30
1	A	199	LEU	N-CA-C	-5.18	97.01	111.00

There are no chirality outliers.

All (3) planarity outliers are listed below:

Mol	Chain	Res	Type	Group
1	A	95	TYR	Sidechain
1	B	95	TYR	Sidechain
1	D	95	TYR	Sidechain

5.2 Too-close contacts

In the following table, the Non-H and H(model) columns list the number of non-hydrogen atoms and hydrogen atoms in the chain respectively. The H(added) column lists the number of hydrogen atoms added and optimized by MolProbity. The Clashes column lists the number of clashes within the asymmetric unit, whereas Symm-Clashes lists symmetry related clashes.

Mol	Chain	Non-H	H(model)	H(added)	Clashes	Symm-Clashes
1	A	1920	0	1854	47	0
1	B	1920	0	1854	51	0
1	C	1920	0	1854	57	0
1	D	1920	0	1854	68	0
2	A	41	0	31	5	0
2	B	41	0	34	4	0
2	C	41	0	33	9	0
2	D	41	0	33	10	0
3	A	52	0	0	3	0
3	B	43	0	0	2	0
3	C	66	0	0	4	0
3	D	35	0	0	4	0
All	All	8040	0	7547	224	0

The all-atom clashscore is defined as the number of clashes found per 1000 atoms (including hydrogen atoms). The all-atom clashscore for this structure is 15.

All (224) close contacts within the same asymmetric unit are listed below, sorted by their clash magnitude.

Atom-1	Atom-2	Interatomic distance (Å)	Clash overlap (Å)
1:D:24:ARG:HH11	1:D:24:ARG:HG2	1.16	1.09
1:D:125:PRO:HD2	1:D:128:GLU:OE1	1.60	1.00
1:B:185:ASN:ND2	1:B:188:ARG:H	1.61	0.97
1:A:24:ARG:HH11	1:A:24:ARG:HB3	1.30	0.94
1:C:146:ASN:HD21	1:C:220:CYS:H	1.17	0.91
1:A:102:ASP:O	1:A:229:THR:HG21	1.71	0.90

Continued on next page...

Continued from previous page...

Atom-1	Atom-2	Interatomic distance (Å)	Clash overlap (Å)
1:B:239:HIS:HB3	1:B:244:LYS:HE2	1.54	0.87
1:A:21:GLU:HG3	1:A:154:PRO:HB2	1.54	0.87
1:B:91:HIS:HD2	1:B:93:GLN:H	1.25	0.84
1:B:185:ASN:HD21	1:B:188:ARG:H	1.23	0.82
2:C:997:C3A:O6	3:C:1047:HOH:O	1.99	0.81
1:A:24:ARG:NH1	1:A:24:ARG:HB3	1.97	0.80
1:D:24:ARG:HH11	1:D:24:ARG:CG	1.94	0.79
1:A:48:HIS:HD2	1:A:50:GLN:H	1.31	0.79
1:D:21:GLU:HG3	1:D:154:PRO:HB2	1.64	0.78
1:A:129:THR:HG23	1:A:131:PRO:HD3	1.64	0.78
1:D:24:ARG:HG2	1:D:24:ARG:NH1	1.86	0.78
1:C:192:GLN:HA	2:C:997:C3A:O17	1.85	0.77
1:A:159:LYS:O	1:A:188:ARG:HD3	1.86	0.76
1:B:163:MET:HB2	1:B:182:CYS:SG	2.26	0.76
1:D:24:ARG:CD	1:D:24:ARG:H	1.98	0.74
1:C:61:LEU:HD21	1:C:88:ILE:HG13	1.69	0.74
1:C:202:LYS:HE3	1:C:205:GLY:HA2	1.68	0.74
1:B:190:SER:O	2:B:998:C3A:H132	1.88	0.73
1:D:192:GLN:HA	2:D:996:C3A:O17	1.89	0.73
1:B:192:GLN:HA	2:B:998:C3A:O17	1.89	0.72
1:B:134:MET:SD	1:B:135:PRO:HD2	2.30	0.72
1:B:174:ARG:HG2	1:B:174:ARG:HH11	1.55	0.71
1:D:243:PRO:C	1:D:244:LYS:HD2	2.11	0.71
1:A:190:SER:O	2:A:999:C3A:H132	1.90	0.71
1:A:61:LEU:CD2	1:A:88:ILE:HG12	2.21	0.69
1:D:24:ARG:NE	1:D:24:ARG:H	1.90	0.69
1:C:137:TRP:HZ3	3:C:1052:HOH:O	1.74	0.69
1:C:48:HIS:HD2	1:C:50:GLN:H	1.42	0.68
1:B:185:ASN:HD21	1:B:188:ARG:N	1.91	0.68
1:A:61:LEU:HD21	1:A:88:ILE:HG12	1.76	0.66
1:C:59:VAL:O	1:C:60(D):LYS:HE2	1.94	0.66
1:D:181:LEU:C	1:D:181:LEU:HD12	2.16	0.66
1:C:114:VAL:HG13	1:C:119:HIS:HB3	1.78	0.65
1:C:84:PRO:HB2	1:C:109:GLU:OE2	1.96	0.65
1:D:190:SER:O	2:D:996:C3A:H132	1.96	0.65
1:D:24:ARG:HA	1:D:71:GLN:NE2	2.12	0.64
1:D:232:THR:HA	1:D:235:LEU:HD22	1.80	0.64
1:B:174:ARG:HG2	1:B:174:ARG:NH1	2.11	0.64
1:C:203:VAL:HG21	1:C:208:LEU:HD12	1.79	0.64
1:C:91:HIS:CE1	1:C:93:GLN:HB2	2.33	0.64
2:D:996:C3A:N7	2:D:996:C3A:N41	2.45	0.64

Continued on next page...

Continued from previous page...

Atom-1	Atom-2	Interatomic distance (Å)	Clash overlap (Å)
1:A:93:GLN:HE21	1:A:93:GLN:HA	1.63	0.63
1:D:36:HIS:HB2	1:D:38:TRP:CH2	2.34	0.63
1:D:159:LYS:O	1:D:188:ARG:HD3	1.98	0.63
1:A:48:HIS:CD2	1:A:50:GLN:H	2.16	0.63
1:A:192:GLN:HA	2:A:999:C3A:O17	1.99	0.63
1:C:190:SER:O	2:C:997:C3A:H132	2.00	0.62
1:B:191:CYS:HA	2:B:998:C3A:H122	1.83	0.61
2:C:997:C3A:O4	2:C:997:C3A:N41	2.33	0.61
1:C:143:ASP:OD1	1:C:150:ARG:HD3	2.01	0.61
1:C:21:GLU:HG3	1:C:154:PRO:HB2	1.82	0.61
1:B:67:GLN:NE2	1:B:70:GLU:HG3	2.16	0.60
1:C:146:ASN:HD21	1:C:220:CYS:N	1.96	0.60
1:C:185:ASN:HD22	1:C:185:ASN:C	2.05	0.60
1:B:52:VAL:HB	1:B:106:LEU:HB2	1.82	0.60
1:B:36:HIS:HB2	1:B:38:TRP:CH2	2.36	0.60
1:D:181:LEU:HD12	1:D:182:CYS:N	2.17	0.59
1:C:150:ARG:HH11	1:C:150:ARG:HG2	1.68	0.58
1:B:29:TRP:CG	1:B:121:VAL:HB	2.39	0.58
1:D:124:PRO:O	1:D:235:LEU:HD21	2.04	0.57
1:B:61:LEU:HD11	3:B:1020:HOH:O	2.04	0.57
1:D:52:VAL:HB	1:D:106:LEU:HB2	1.86	0.57
1:D:48:HIS:CD2	1:D:50:GLN:H	2.22	0.57
1:D:24:ARG:HA	1:D:71:GLN:HE21	1.69	0.56
1:A:30:GLN:HE22	1:A:198:PRO:HD2	1.69	0.56
1:C:48:HIS:CD2	1:C:50:GLN:H	2.23	0.56
1:D:48:HIS:HD2	1:D:50:GLN:H	1.53	0.55
1:C:64:LEU:HB2	2:C:997:C3A:H37	1.88	0.55
1:B:144:VAL:HG12	1:B:156:LYS:HE2	1.89	0.55
1:B:150:ARG:HD2	3:B:1031:HOH:O	2.06	0.55
1:B:185:ASN:C	1:B:185:ASN:HD22	2.11	0.54
1:D:193:GLY:N	2:D:996:C3A:O17	2.34	0.54
1:B:142:GLY:HA2	1:B:193:GLY:HA3	1.89	0.54
1:A:64:LEU:CD2	1:A:88:ILE:HD11	2.38	0.54
1:B:240:HIS:O	1:B:240:HIS:ND1	2.40	0.54
1:A:193:GLY:N	2:A:999:C3A:O17	2.38	0.53
1:C:150:ARG:NH1	1:C:150:ARG:HG2	2.22	0.53
1:D:72:HIS:HB3	1:D:152(B):PRO:O	2.09	0.53
1:D:53:LEU:HD11	1:D:103:ILE:HD11	1.90	0.52
1:A:75:TYR:HB2	1:B:75:TYR:CE1	2.44	0.52
1:C:146:ASN:ND2	1:C:220:CYS:H	1.97	0.52
1:C:185:ASN:ND2	1:C:188:ARG:H	2.08	0.52

Continued on next page...

Continued from previous page...

Atom-1	Atom-2	Interatomic distance (Å)	Clash overlap (Å)
1:C:75:TYR:CE2	1:D:75:TYR:HB2	2.45	0.52
1:B:29:TRP:CD2	1:B:121:VAL:HB	2.44	0.51
1:B:67:GLN:HE21	1:B:70:GLU:HG3	1.75	0.51
1:A:211:GLY:HA2	1:A:231:VAL:HG23	1.92	0.51
1:C:202:LYS:HE3	1:C:205:GLY:CA	2.40	0.51
1:C:53:LEU:HD11	1:C:103:ILE:HD11	1.93	0.51
1:C:31:VAL:HG22	1:C:44:GLY:C	2.31	0.51
1:A:27:TRP:N	1:A:28:PRO:HD3	2.26	0.51
1:B:118:VAL:O	1:B:118:VAL:HG23	2.11	0.51
1:D:145:ASP:HB3	1:D:149:GLU:HG2	1.93	0.51
1:D:50:GLN:OE1	1:D:111:PRO:HG3	2.10	0.51
1:A:166:HIS:HD2	3:A:1050:HOH:O	1.94	0.50
1:B:188:ARG:HH11	1:B:188:ARG:HG2	1.77	0.50
1:C:56:ALA:HB2	1:C:103:ILE:O	2.11	0.50
1:B:144:VAL:O	1:B:145:ASP:HB2	2.11	0.50
1:C:41:PHE:CE2	2:C:997:C3A:H402	2.47	0.49
1:D:34:ARG:NH2	1:D:73:LEU:HD22	2.27	0.49
1:A:61:LEU:HD23	1:A:88:ILE:HG12	1.94	0.49
1:D:34:ARG:HH21	1:D:73:LEU:HD22	1.78	0.49
1:A:24:ARG:HH11	1:A:24:ARG:CB	2.13	0.49
1:B:168:CYS:SG	1:B:225:PRO:CG	3.01	0.49
1:D:28:PRO:HG3	1:D:119:HIS:CE1	2.47	0.49
1:A:96:THR:HG21	1:D:98:GLN:HG2	1.94	0.49
1:C:27:TRP:CD1	1:C:139:THR:HG21	2.48	0.49
1:D:186:THR:HA	1:D:221:ALA:O	2.12	0.49
1:C:70:GLU:OE1	1:C:80:ASP:OD1	2.31	0.48
1:D:69:ARG:HH22	1:D:71:GLN:NE2	2.10	0.48
1:C:185:ASN:ND2	1:C:187:ARG:H	2.11	0.48
1:A:212:VAL:HB	1:A:229:THR:HG23	1.96	0.48
1:D:63:ALA:HB3	2:D:996:C3A:H36	1.95	0.48
1:A:27:TRP:CD1	1:A:139:THR:HG21	2.48	0.48
1:B:125:PRO:HG2	1:B:128:GLU:HB2	1.95	0.48
1:B:174:ARG:HH22	1:B:178:ASP:CG	2.17	0.48
1:D:134:MET:HG3	1:D:135:PRO:CD	2.44	0.48
1:D:181:LEU:C	1:D:181:LEU:CD1	2.83	0.47
1:B:46:LEU:O	1:B:120:THR:HA	2.14	0.47
1:B:31:VAL:HG22	1:B:44:GLY:C	2.34	0.47
1:B:131:PRO:O	1:B:134:MET:HB2	2.14	0.47
1:D:134:MET:HG3	1:D:135:PRO:HD2	1.96	0.47
1:D:68:LEU:O	1:D:69:ARG:C	2.52	0.47
1:B:185:ASN:ND2	1:B:187:ARG:H	2.12	0.47

Continued on next page...

Continued from previous page...

Atom-1	Atom-2	Interatomic distance (Å)	Clash overlap (Å)
1:A:70:GLU:OE1	1:A:80:ASP:OD1	2.33	0.47
1:D:234:TYR:HA	3:D:1030:HOH:O	2.15	0.47
1:D:61:LEU:HD11	3:D:1026:HOH:O	2.14	0.47
1:B:91:HIS:CD2	1:B:93:GLN:H	2.17	0.46
1:C:193:GLY:N	2:C:997:C3A:O17	2.44	0.46
1:B:73:LEU:O	1:B:75:TYR:HD2	1.98	0.46
1:C:114:VAL:HG13	1:C:119:HIS:CB	2.42	0.46
1:D:240:HIS:ND1	1:D:240:HIS:O	2.45	0.46
1:B:73:LEU:O	1:B:75:TYR:CD2	2.69	0.46
1:D:149:GLU:HG3	1:D:149:GLU:O	2.16	0.46
1:D:195:SER:HA	1:D:213:VAL:CG1	2.45	0.46
1:A:34:ARG:HD3	1:A:40:HIS:HA	1.98	0.46
1:A:225:PRO:HA	3:A:1041:HOH:O	2.15	0.46
1:D:181:LEU:CD1	1:D:182:CYS:N	2.79	0.46
1:A:232:THR:HG23	3:A:1011:HOH:O	2.16	0.46
1:D:56:ALA:HB1	1:D:90:VAL:HG13	1.98	0.45
1:A:73:LEU:HG	1:A:141:TRP:CD1	2.51	0.45
1:B:30:GLN:NE2	1:B:139:THR:OG1	2.49	0.45
1:C:187:ARG:HE	1:C:187:ARG:HB2	1.43	0.45
1:D:33:LEU:HB3	1:D:41:PHE:CZ	2.50	0.45
1:D:219:GLY:O	2:D:996:C3A:H131	2.16	0.45
1:A:56:ALA:HB2	1:A:103:ILE:O	2.15	0.45
1:B:150:ARG:HD2	1:B:150:ARG:H	1.82	0.45
1:D:24:ARG:CD	1:D:24:ARG:N	2.73	0.45
1:C:173:HIS:CD2	1:C:173(G):ASP:HA	2.52	0.45
1:C:38:TRP:CH2	1:C:65:ARG:HG3	2.52	0.45
1:D:169:ASP:HA	1:D:176:VAL:HG23	1.99	0.45
1:A:98:GLN:H	1:A:98:GLN:HG2	1.28	0.45
1:B:181:LEU:HD23	1:B:182:CYS:N	2.31	0.45
1:D:124:PRO:HD3	1:D:209:GLN:O	2.17	0.45
1:D:195:SER:HA	1:D:213:VAL:HG12	1.98	0.45
1:B:185:ASN:ND2	1:B:188:ARG:N	2.45	0.45
1:B:188:ARG:NH1	1:B:188:ARG:HG2	2.32	0.44
1:C:202:LYS:CE	3:C:1038:HOH:O	2.65	0.44
1:D:34:ARG:HH21	1:D:73:LEU:CD2	2.31	0.44
1:A:60(B):ASP:O	1:A:60(D):LYS:HE3	2.18	0.44
1:C:36:HIS:HD2	1:C:38:TRP:CZ2	2.35	0.44
1:A:239:HIS:CG	1:A:244:LYS:HE2	2.51	0.44
1:B:159:LYS:O	1:B:188:ARG:HD3	2.18	0.44
1:C:61:LEU:CD2	1:C:88:ILE:HG13	2.44	0.44
1:C:213:VAL:HG12	2:C:997:C3A:H101	1.98	0.43

Continued on next page...

Continued from previous page...

Atom-1	Atom-2	Interatomic distance (Å)	Clash overlap (Å)
1:A:31:VAL:HG22	1:A:44:GLY:C	2.39	0.43
1:D:130:PHE:HA	1:D:131:PRO:HD2	1.87	0.43
1:C:147:ASP:C	1:C:150:ARG:HH12	2.21	0.43
1:D:30:GLN:HG2	1:D:155:LEU:HD11	2.00	0.43
1:C:152(A):PRO:HG3	1:C:153:PHE:CZ	2.53	0.43
1:A:89:ILE:HD13	1:A:241:TYR:CD1	2.53	0.43
1:C:202:LYS:HG2	1:C:207:TRP:CE2	2.54	0.43
1:A:195:SER:HA	1:A:213:VAL:HG12	1.99	0.43
1:D:46:LEU:O	1:D:120:THR:HA	2.19	0.43
1:A:213:VAL:CG1	2:A:999:C3A:H101	2.49	0.43
1:A:228:TYR:CD1	1:A:228:TYR:N	2.87	0.43
1:B:168:CYS:SG	1:B:225:PRO:HG2	2.59	0.43
1:D:61:LEU:N	1:D:61:LEU:HD12	2.34	0.43
2:B:998:C3A:H31	2:B:998:C3A:H27	1.51	0.42
1:B:96:THR:HG21	1:C:98:GLN:HG2	2.00	0.42
1:D:103:ILE:HB	1:D:229:THR:HG21	2.01	0.42
1:D:203:VAL:C	1:D:205:GLY:H	2.22	0.42
1:C:51:TRP:CZ3	1:C:107:GLU:HB2	2.55	0.42
1:C:181:LEU:HD23	1:C:182:CYS:N	2.35	0.42
1:C:89:ILE:HD13	1:C:241:TYR:CD1	2.54	0.42
1:C:99:ILE:O	1:C:177:ARG:HD2	2.20	0.42
1:A:38:TRP:CZ3	1:A:65:ARG:HG3	2.54	0.42
1:B:131:PRO:HA	1:B:132:PRO:HD3	1.87	0.42
1:C:30:GLN:NE2	1:C:139:THR:OG1	2.52	0.42
1:C:171:LYS:HD2	1:C:223:ASN:HD22	1.84	0.42
1:A:143:ASP:OD2	1:A:150:ARG:NH1	2.53	0.42
1:C:181:LEU:HD23	1:C:181:LEU:C	2.40	0.42
1:A:30:GLN:NE2	1:A:139:THR:OG1	2.52	0.42
1:C:56:ALA:HB1	1:C:90:VAL:HG13	2.02	0.42
1:C:190:SER:OG	2:C:997:C3A:H151	2.19	0.41
1:D:69:ARG:HH22	1:D:71:GLN:HE21	1.67	0.41
1:D:41:PHE:CE2	2:D:996:C3A:H402	2.55	0.41
1:C:171:LYS:HD2	1:C:223:ASN:ND2	2.35	0.41
1:C:202:LYS:HE2	3:C:1038:HOH:O	2.20	0.41
1:D:187:ARG:HH21	1:D:187:ARG:HG3	1.85	0.41
1:D:244:LYS:HD2	1:D:244:LYS:N	2.34	0.41
1:D:48:HIS:CD2	1:D:51:TRP:HD1	2.39	0.41
1:B:53:LEU:HD11	1:B:103:ILE:HD11	2.02	0.41
1:A:29:TRP:O	1:A:45:SER:HA	2.20	0.41
1:D:119:HIS:HB2	3:D:1004:HOH:O	2.19	0.41
1:B:187:ARG:HB2	1:B:187:ARG:CZ	2.50	0.41

Continued on next page...

Continued from previous page...

Atom-1	Atom-2	Interatomic distance (Å)	Clash overlap (Å)
2:D:996:C3A:H121	3:D:1009:HOH:O	2.21	0.41
1:A:190:SER:OG	2:A:999:C3A:H151	2.20	0.41
1:B:48:HIS:CG	1:B:49:PRO:HD2	2.55	0.41
1:D:174:ARG:HB3	1:D:174:ARG:HH21	1.85	0.41
1:B:16:ILE:O	1:B:144:VAL:HA	2.20	0.41
1:A:131:PRO:HD2	1:A:134:MET:CE	2.51	0.41
1:D:123:LEU:HA	1:D:123:LEU:HD23	1.89	0.41
1:A:152(A):PRO:HA	1:A:153:PHE:N	2.36	0.40
1:C:73:LEU:HG	1:C:141:TRP:CD1	2.56	0.40
1:C:221(A):GLN:HA	1:C:222:PRO:HD3	1.98	0.40
1:A:187:ARG:HE	1:A:187:ARG:HB2	1.68	0.40
1:D:97:ALA:HB3	2:D:996:C3A:C1	2.50	0.40
1:D:97:ALA:HB3	2:D:996:C3A:H12	2.04	0.40

There are no symmetry-related clashes.

5.3 Torsion angles [i](#)

5.3.1 Protein backbone [i](#)

In the following table, the Percentiles column shows the percent Ramachandran outliers of the chain as a percentile score with respect to all X-ray entries followed by that with respect to entries of similar resolution.

The Analysed column shows the number of residues for which the backbone conformation was analysed, and the total number of residues.

Mol	Chain	Analysed	Favoured	Allowed	Outliers	Percentiles	
1	A	241/245 (98%)	230 (95%)	11 (5%)	0	100	100
1	B	241/245 (98%)	224 (93%)	17 (7%)	0	100	100
1	C	241/245 (98%)	228 (95%)	13 (5%)	0	100	100
1	D	241/245 (98%)	221 (92%)	17 (7%)	3 (1%)	14	26
All	All	964/980 (98%)	903 (94%)	58 (6%)	3 (0%)	43	64

All (3) Ramachandran outliers are listed below:

Mol	Chain	Res	Type
1	D	243	PRO
1	D	69	ARG

Continued on next page...

Continued from previous page...

Mol	Chain	Res	Type
1	D	205	GLY

5.3.2 Protein sidechains ⓘ

In the following table, the Percentiles column shows the percent sidechain outliers of the chain as a percentile score with respect to all X-ray entries followed by that with respect to entries of similar resolution.

The Analysed column shows the number of residues for which the sidechain conformation was analysed, and the total number of residues.

Mol	Chain	Analysed	Rotameric	Outliers	Percentiles	
1	A	208/210 (99%)	197 (95%)	11 (5%)	25	46
1	B	208/210 (99%)	199 (96%)	9 (4%)	32	56
1	C	208/210 (99%)	201 (97%)	7 (3%)	40	67
1	D	208/210 (99%)	198 (95%)	10 (5%)	28	51
All	All	832/840 (99%)	795 (96%)	37 (4%)	31	55

All (37) residues with a non-rotameric sidechain are listed below:

Mol	Chain	Res	Type
1	A	20	GLN
1	A	24	ARG
1	A	68	LEU
1	A	93	GLN
1	A	98	GLN
1	A	113	LYS
1	A	159	LYS
1	A	165	ASN
1	A	174	ARG
1	A	199	LEU
1	A	229	THR
1	B	122	THR
1	B	134	MET
1	B	150	ARG
1	B	165	ASN
1	B	168	CYS
1	B	174	ARG
1	B	182	CYS
1	B	185	ASN
1	B	198	PRO

Continued on next page...

Continued from previous page...

Mol	Chain	Res	Type
1	C	65	ARG
1	C	93	GLN
1	C	123	LEU
1	C	165	ASN
1	C	185	ASN
1	C	202	LYS
1	C	222	PRO
1	D	24	ARG
1	D	128	GLU
1	D	165	ASN
1	D	167	ILE
1	D	168	CYS
1	D	174	ARG
1	D	181	LEU
1	D	198	PRO
1	D	206	THR
1	D	235	LEU

Some sidechains can be flipped to improve hydrogen bonding and reduce clashes. All (31) such sidechains are listed below:

Mol	Chain	Res	Type
1	A	20	GLN
1	A	30	GLN
1	A	48	HIS
1	A	93	GLN
1	A	119	HIS
1	A	165	ASN
1	A	166	HIS
1	A	223	ASN
1	A	240	HIS
1	B	30	GLN
1	B	50	GLN
1	B	91	HIS
1	B	185	ASN
1	B	204	ASN
1	B	221(A)	GLN
1	C	30	GLN
1	C	36	HIS
1	C	48	HIS
1	C	79	GLN
1	C	119	HIS
1	C	146	ASN

Continued on next page...

Continued from previous page...

Mol	Chain	Res	Type
1	C	165	ASN
1	C	185	ASN
1	C	223	ASN
1	D	30	GLN
1	D	48	HIS
1	D	71	GLN
1	D	79	GLN
1	D	93	GLN
1	D	119	HIS
1	D	223	ASN

5.3.3 RNA ⓘ

There are no RNA molecules in this entry.

5.4 Non-standard residues in protein, DNA, RNA chains ⓘ

There are no non-standard protein/DNA/RNA residues in this entry.

5.5 Carbohydrates ⓘ

There are no carbohydrates in this entry.

5.6 Ligand geometry ⓘ

4 ligands are modelled in this entry.

In the following table, the Counts columns list the number of bonds (or angles) for which Mogul statistics could be retrieved, the number of bonds (or angles) that are observed in the model and the number of bonds (or angles) that are defined in the Chemical Component Dictionary. The Link column lists molecule types, if any, to which the group is linked. The Z score for a bond length (or angle) is the number of standard deviations the observed value is removed from the expected value. A bond length (or angle) with $|Z| > 2$ is considered an outlier worth inspection. RMSZ is the root-mean-square of all Z scores of the bond lengths (or angles).

Mol	Type	Chain	Res	Link	Bond lengths			Bond angles		
					Counts	RMSZ	$\# Z > 2$	Counts	RMSZ	$\# Z > 2$
2	C3A	A	999	1	39,45,45	3.81	27 (69%)	42,61,61	4.28	17 (40%)
2	C3A	B	998	1	39,45,45	3.89	19 (48%)	42,61,61	3.38	16 (38%)
2	C3A	C	997	1	39,45,45	3.67	24 (61%)	42,61,61	3.84	15 (35%)

Mol	Type	Chain	Res	Link	Bond lengths			Bond angles		
					Counts	RMSZ	# Z > 2	Counts	RMSZ	# Z > 2
2	C3A	D	996	1	39,45,45	3.75	23 (58%)	42,61,61	4.65	13 (30%)

In the following table, the Chirals column lists the number of chiral outliers, the number of chiral centers analysed, the number of these observed in the model and the number defined in the Chemical Component Dictionary. Similar counts are reported in the Torsion and Rings columns. '-' means no outliers of that kind were identified.

Mol	Type	Chain	Res	Link	Chirals	Torsions	Rings
2	C3A	A	999	1	-	0/28/48/48	0/5/5/5
2	C3A	B	998	1	-	0/28/48/48	0/5/5/5
2	C3A	C	997	1	-	0/28/48/48	0/5/5/5
2	C3A	D	996	1	-	0/28/48/48	0/5/5/5

All (93) bond length outliers are listed below:

Mol	Chain	Res	Type	Atoms	Z	Observed(Å)	Ideal(Å)
2	A	999	C3A	C22-C21	-8.04	1.36	1.50
2	C	997	C3A	C22-C21	-7.85	1.36	1.50
2	B	998	C3A	C22-C21	-6.98	1.38	1.50
2	A	999	C3A	C18-C16	-5.47	1.42	1.52
2	C	997	C3A	C18-C16	-5.32	1.42	1.52
2	B	998	C3A	C18-C16	-5.28	1.42	1.52
2	D	996	C3A	C22-C21	-5.19	1.41	1.50
2	A	999	C3A	O30-C29	-4.49	1.14	1.23
2	C	997	C3A	O30-C29	-4.38	1.14	1.23
2	D	996	C3A	C33-C34	-4.19	1.44	1.50
2	B	998	C3A	C33-C34	-3.99	1.44	1.50
2	A	999	C3A	C33-C34	-3.49	1.45	1.50
2	D	996	C3A	C18-C16	-3.36	1.46	1.52
2	C	997	C3A	C33-C34	-3.34	1.45	1.50
2	D	996	C3A	O30-C29	-3.20	1.16	1.23
2	B	998	C3A	O30-C29	-2.90	1.17	1.23
2	A	999	C3A	C32-N31	-2.87	1.41	1.46
2	B	998	C3A	C32-N31	-2.87	1.41	1.46
2	A	999	C3A	C33-C32	-2.81	1.48	1.53
2	D	996	C3A	C32-N31	-2.75	1.41	1.46
2	A	999	C3A	C26-C29	-2.69	1.44	1.50
2	C	997	C3A	C32-N31	-2.50	1.41	1.46
2	C	997	C3A	C33-C32	-2.32	1.49	1.53
2	C	997	C3A	C26-C29	-2.31	1.45	1.50
2	A	999	C3A	C8-C16	-2.27	1.49	1.53
2	B	998	C3A	C33-C32	-2.17	1.49	1.53

Continued on next page...

Continued from previous page...

Mol	Chain	Res	Type	Atoms	Z	Observed(Å)	Ideal(Å)
2	D	996	C3A	C33-C32	-2.16	1.49	1.53
2	C	997	C3A	C8-C16	-2.13	1.49	1.53
2	A	999	C3A	C10-C9	2.11	1.59	1.53
2	A	999	C3A	C1-C2	2.22	1.43	1.28
2	D	996	C3A	C28-C23	2.24	1.43	1.38
2	A	999	C3A	C28-C23	2.30	1.43	1.38
2	C	997	C3A	O4-C5	2.39	1.39	1.35
2	C	997	C3A	C3-C2	2.57	1.62	1.48
2	D	996	C3A	C38-C39	2.86	1.44	1.39
2	B	998	C3A	C38-C39	2.88	1.44	1.39
2	C	997	C3A	C38-C39	2.91	1.44	1.39
2	C	997	C3A	C36-C35	2.94	1.44	1.38
2	A	999	C3A	C36-C35	2.96	1.44	1.38
2	B	998	C3A	C36-C35	3.02	1.44	1.38
2	A	999	C3A	C38-C39	3.07	1.44	1.39
2	A	999	C3A	C39-C34	3.09	1.45	1.39
2	B	998	C3A	O6-C5	3.11	1.27	1.21
2	D	996	C3A	C36-C35	3.13	1.45	1.38
2	A	999	C3A	C37-C38	3.16	1.45	1.38
2	D	996	C3A	C27-C26	3.20	1.44	1.39
2	D	996	C3A	C39-C34	3.21	1.45	1.39
2	C	997	C3A	C39-C34	3.23	1.45	1.39
2	A	999	C3A	C27-C26	3.23	1.44	1.39
2	A	999	C3A	C35-C34	3.26	1.45	1.39
2	C	997	C3A	C27-C26	3.29	1.45	1.39
2	D	996	C3A	C3-C2	3.33	1.66	1.48
2	D	996	C3A	C35-C34	3.35	1.45	1.39
2	C	997	C3A	C37-C38	3.37	1.45	1.38
2	D	996	C3A	C37-C38	3.37	1.45	1.38
2	D	996	C3A	O4-C5	3.40	1.41	1.35
2	B	998	C3A	C39-C34	3.48	1.45	1.39
2	A	999	C3A	C3-C2	3.55	1.67	1.48
2	C	997	C3A	C35-C34	3.65	1.45	1.39
2	D	996	C3A	O6-C5	3.68	1.28	1.21
2	B	998	C3A	C27-C26	3.72	1.45	1.39
2	A	999	C3A	C37-C36	3.75	1.47	1.38
2	B	998	C3A	C37-C38	3.86	1.46	1.38
2	C	997	C3A	O4-C3	3.86	1.57	1.46
2	D	996	C3A	C37-C36	3.87	1.47	1.38
2	B	998	C3A	C35-C34	3.96	1.46	1.39
2	C	997	C3A	C37-C36	4.02	1.47	1.38
2	B	998	C3A	C37-C36	4.17	1.48	1.38

Continued on next page...

Continued from previous page...

Mol	Chain	Res	Type	Atoms	Z	Observed(Å)	Ideal(Å)
2	A	999	C3A	O4-C5	4.29	1.43	1.35
2	A	999	C3A	C25-C24	4.30	1.46	1.38
2	A	999	C3A	C25-C26	4.35	1.46	1.39
2	B	998	C3A	C25-C24	4.39	1.46	1.38
2	C	997	C3A	O6-C5	4.43	1.30	1.21
2	C	997	C3A	C25-C24	4.49	1.46	1.38
2	C	997	C3A	C25-C26	4.50	1.47	1.39
2	D	996	C3A	C40-C32	4.64	1.61	1.53
2	D	996	C3A	C25-C24	4.82	1.47	1.38
2	B	998	C3A	C40-C32	4.99	1.61	1.53
2	C	997	C3A	C40-C32	5.12	1.62	1.53
2	A	999	C3A	C40-C32	5.12	1.62	1.53
2	B	998	C3A	C25-C26	5.15	1.48	1.39
2	D	996	C3A	C25-C26	5.39	1.48	1.39
2	D	996	C3A	O4-C3	5.62	1.62	1.46
2	A	999	C3A	O4-C3	5.78	1.62	1.46
2	A	999	C3A	C24-C23	6.01	1.51	1.38
2	C	997	C3A	C24-C23	6.13	1.51	1.38
2	D	996	C3A	C24-C23	6.38	1.52	1.38
2	B	998	C3A	C24-C23	6.47	1.52	1.38
2	A	999	C3A	O6-C5	7.78	1.36	1.21
2	A	999	C3A	O17-C16	9.71	1.36	1.22
2	C	997	C3A	O17-C16	11.61	1.38	1.22
2	D	996	C3A	O17-C16	13.69	1.41	1.22
2	B	998	C3A	O17-C16	15.40	1.44	1.22

All (61) bond angle outliers are listed below:

Mol	Chain	Res	Type	Atoms	Z	Observed(°)	Ideal(°)
2	D	996	C3A	O6-C5-N7	-15.57	98.61	124.85
2	A	999	C3A	O6-C5-N7	-11.07	106.20	124.85
2	C	997	C3A	O6-C5-N7	-9.82	108.30	124.85
2	D	996	C3A	O4-C5-O6	-8.07	108.35	124.22
2	B	998	C3A	C9-C8-N7	-7.95	94.69	110.88
2	B	998	C3A	O6-C5-N7	-6.51	113.89	124.85
2	A	999	C3A	O4-C5-O6	-5.88	112.65	124.22
2	C	997	C3A	O4-C5-O6	-5.08	114.22	124.22
2	C	997	C3A	C9-C8-N7	-4.58	101.56	110.88
2	A	999	C3A	O17-C16-C8	-4.05	112.83	119.47
2	C	997	C3A	O17-C16-C8	-3.91	113.06	119.47
2	B	998	C3A	O17-C16-C8	-3.73	113.35	119.47
2	A	999	C3A	C26-C29-N31	-3.45	110.72	116.98

Continued on next page...

Continued from previous page...

Mol	Chain	Res	Type	Atoms	Z	Observed(°)	Ideal(°)
2	A	999	C3A	C24-C25-C26	-2.91	117.48	120.78
2	B	998	C3A	C39-C40-C32	-2.87	99.91	102.80
2	C	997	C3A	C24-C25-C26	-2.78	117.63	120.78
2	B	998	C3A	C24-C25-C26	-2.72	117.70	120.78
2	B	998	C3A	C26-C29-N31	-2.66	112.15	116.98
2	D	996	C3A	C39-C40-C32	-2.61	100.17	102.80
2	D	996	C3A	C26-C29-N31	-2.54	112.38	116.98
2	A	999	C3A	C39-C40-C32	-2.47	100.31	102.80
2	D	996	C3A	O17-C16-C8	-2.42	115.50	119.47
2	D	996	C3A	C24-C25-C26	-2.40	118.06	120.78
2	C	997	C3A	C36-C35-C34	-2.40	117.25	120.89
2	B	998	C3A	C36-C35-C34	-2.35	117.33	120.89
2	A	999	C3A	C9-C8-N7	-2.32	106.15	110.88
2	D	996	C3A	C36-C35-C34	-2.27	117.44	120.89
2	A	999	C3A	C36-C35-C34	-2.24	117.49	120.89
2	C	997	C3A	C26-C29-N31	-2.16	113.06	116.98
2	B	998	C3A	C35-C34-C39	2.01	122.36	120.08
2	A	999	C3A	C12-C11-C15	2.21	104.85	102.14
2	B	998	C3A	C28-C27-C26	2.23	123.31	120.78
2	A	999	C3A	C33-C34-C39	2.26	112.13	110.56
2	A	999	C3A	C28-C27-C26	2.43	123.54	120.78
2	C	997	C3A	C3-O4-C5	2.43	120.01	116.28
2	C	997	C3A	C28-C27-C26	2.45	123.56	120.78
2	D	996	C3A	C34-C33-C32	2.68	105.50	102.80
2	A	999	C3A	C34-C33-C32	2.74	105.56	102.80
2	C	997	C3A	C34-C33-C32	2.91	105.73	102.80
2	A	999	C3A	C21-N41-C18	3.02	106.00	102.00
2	B	998	C3A	C34-C33-C32	3.22	106.04	102.80
2	C	997	C3A	C21-N41-C18	3.78	107.00	102.00
2	B	998	C3A	C8-N7-C5	3.99	130.90	120.92
2	B	998	C3A	C21-N41-C18	4.07	107.39	102.00
2	B	998	C3A	O4-C3-C2	4.80	125.42	109.35
2	D	996	C3A	O4-C3-C2	4.99	126.04	109.35
2	C	997	C3A	O4-C3-C2	5.21	126.76	109.35
2	D	996	C3A	C21-N41-C18	5.25	108.95	102.00
2	B	998	C3A	O4-C5-N7	5.91	122.93	110.53
2	A	999	C3A	O4-C3-C2	6.19	130.06	109.35
2	D	996	C3A	C8-N7-C5	8.66	142.59	120.92
2	C	997	C3A	C8-N7-C5	9.64	145.02	120.92
2	B	998	C3A	C32-N31-C29	9.82	135.36	122.56
2	D	996	C3A	C32-N31-C29	9.93	135.51	122.56
2	B	998	C3A	C3-O4-C5	10.07	131.70	116.28

Continued on next page...

Continued from previous page...

Mol	Chain	Res	Type	Atoms	Z	Observed(°)	Ideal(°)
2	C	997	C3A	C32-N31-C29	10.55	136.33	122.56
2	A	999	C3A	C8-N7-C5	10.69	147.65	120.92
2	C	997	C3A	O4-C5-N7	12.07	135.86	110.53
2	A	999	C3A	C32-N31-C29	12.62	139.02	122.56
2	A	999	C3A	O4-C5-N7	13.76	139.40	110.53
2	D	996	C3A	O4-C5-N7	17.59	147.44	110.53

There are no chirality outliers.

There are no torsion outliers.

There are no ring outliers.

4 monomers are involved in 28 short contacts:

Mol	Chain	Res	Type	Clashes	Symm-Clashes
2	A	999	C3A	5	0
2	B	998	C3A	4	0
2	C	997	C3A	9	0
2	D	996	C3A	10	0

5.7 Other polymers [i](#)

There are no such residues in this entry.

5.8 Polymer linkage issues [i](#)

There are no chain breaks in this entry.

6 Fit of model and data [i](#)

6.1 Protein, DNA and RNA chains [i](#)

In the following table, the column labelled ‘#RSRZ> 2’ contains the number (and percentage) of RSRZ outliers, followed by percent RSRZ outliers for the chain as percentile scores relative to all X-ray entries and entries of similar resolution. The OWAB column contains the minimum, median, 95th percentile and maximum values of the occupancy-weighted average B-factor per residue. The column labelled ‘Q< 0.9’ lists the number of (and percentage) of residues with an average occupancy less than 0.9.

Mol	Chain	Analysed	<RSRZ>	#RSRZ>2	OWAB(Å ²)	Q<0.9
1	A	243/245 (99%)	-0.75	0 100 100	12, 23, 45, 62	0
1	B	243/245 (99%)	-0.60	1 (0%) 92 93	14, 28, 53, 71	0
1	C	243/245 (99%)	-0.74	0 100 100	13, 24, 46, 67	0
1	D	243/245 (99%)	-0.56	1 (0%) 92 93	15, 29, 54, 69	0
All	All	972/980 (99%)	-0.66	2 (0%) 94 95	12, 26, 50, 71	0

All (2) RSRZ outliers are listed below:

Mol	Chain	Res	Type	RSRZ
1	B	204	ASN	2.1
1	D	117	HIS	2.1

6.2 Non-standard residues in protein, DNA, RNA chains [i](#)

There are no non-standard protein/DNA/RNA residues in this entry.

6.3 Carbohydrates [i](#)

There are no carbohydrates in this entry.

6.4 Ligands [i](#)

In the following table, the Atoms column lists the number of modelled atoms in the group and the number defined in the chemical component dictionary. The B-factors column lists the minimum, median, 95th percentile and maximum values of B factors of atoms in the group. The column labelled ‘Q< 0.9’ lists the number of atoms with occupancy less than 0.9.

Mol	Type	Chain	Res	Atoms	RSCC	RSR	B-factors(\AA^2)	Q<0.9
2	C3A	B	998	41/41	0.90	0.18	34,42,48,50	0
2	C3A	A	999	41/41	0.90	0.20	30,45,50,53	0
2	C3A	D	996	41/41	0.91	0.18	36,40,56,59	0
2	C3A	C	997	41/41	0.91	0.18	31,42,53,54	0

6.5 Other polymers [i](#)

There are no such residues in this entry.