



Full wwPDB X-ray Structure Validation Report ⓘ

Mar 8, 2018 – 06:15 pm GMT

PDB ID : 2FU9
Title : Zinc-beta-lactamase L1 from *Stenotrophomonas maltophilia* (mp2 inhibitor complex)
Authors : Nauton, L.; Garau, G.; Kahn, R.; Dideberg, O.
Deposited on : 2006-01-26
Resolution : 1.80 Å (reported)

This is a Full wwPDB X-ray Structure Validation Report for a publicly released PDB entry.

We welcome your comments at validation@mail.wwpdb.org

A user guide is available at

<https://www.wwpdb.org/validation/2017/XrayValidationReportHelp>

with specific help available everywhere you see the ⓘ symbol.

The following versions of software and data (see [references ⓘ](#)) were used in the production of this report:

MolProbity : 4.02b-467
Mogul : 1.7.3 (157068), CSD as539be (2018)
Xtriage (Phenix) : 1.13
EDS : trunk30967
Percentile statistics : 20171227.v01 (using entries in the PDB archive December 27th 2017)
Refmac : 5.8.0158
CCP4 : 7.0 (Gargrove)
Ideal geometry (proteins) : Engh & Huber (2001)
Ideal geometry (DNA, RNA) : Parkinson et al. (1996)
Validation Pipeline (wwPDB-VP) : trunk30967

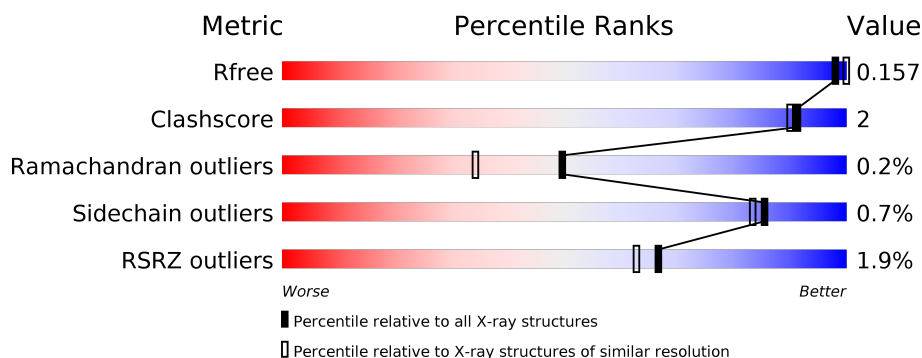
1 Overall quality at a glance

The following experimental techniques were used to determine the structure:

X-RAY DIFFRACTION

The reported resolution of this entry is 1.80 Å.

Percentile scores (ranging between 0-100) for global validation metrics of the entry are shown in the following graphic. The table shows the number of entries on which the scores are based.



Metric	Whole archive (#Entries)	Similar resolution (#Entries, resolution range(Å))
R_{free}	111664	5253 (1.80-1.80)
Clashscore	122126	6077 (1.80-1.80)
Ramachandran outliers	120053	6011 (1.80-1.80)
Sidechain outliers	120020	6010 (1.80-1.80)
RSRZ outliers	108989	5157 (1.80-1.80)

The table below summarises the geometric issues observed across the polymeric chains and their fit to the electron density. The red, orange, yellow and green segments on the lower bar indicate the fraction of residues that contain outliers for ≥ 3 , 2, 1 and 0 types of geometric quality criteria. A grey segment represents the fraction of residues that are not modelled. The numeric value for each fraction is indicated below the corresponding segment, with a dot representing fractions $\leq 5\%$. The upper red bar (where present) indicates the fraction of residues that have poor fit to the electron density. The numeric value is given above the bar.

Mol	Chain	Length	Quality of chain
1	A	269	<div> <div>2%</div> <div> <div></div> <div>92%</div> <div>6% ..</div> </div> </div>
1	B	269	<div> <div>2%</div> <div> <div></div> <div>93%</div> <div>6% .</div> </div> </div>

2 Entry composition [i](#)

There are 6 unique types of molecules in this entry. The entry contains 4778 atoms, of which 0 are hydrogens and 0 are deuteriums.

In the tables below, the ZeroOcc column contains the number of atoms modelled with zero occupancy, the AltConf column contains the number of residues with at least one atom in alternate conformation and the Trace column contains the number of residues modelled with at most 2 atoms.

- Molecule 1 is a protein called Metallo-beta-lactamase L1.

Mol	Chain	Residues	Atoms					ZeroOcc	AltConf	Trace
1	A	266	Total	C	N	O	S	5	10	0
			2037	1281	368	380	8			
1	B	266	Total	C	N	O	S	8	8	0
			2037	1279	372	378	8			

- Molecule 2 is ZINC ION (three-letter code: ZN) (formula: Zn).

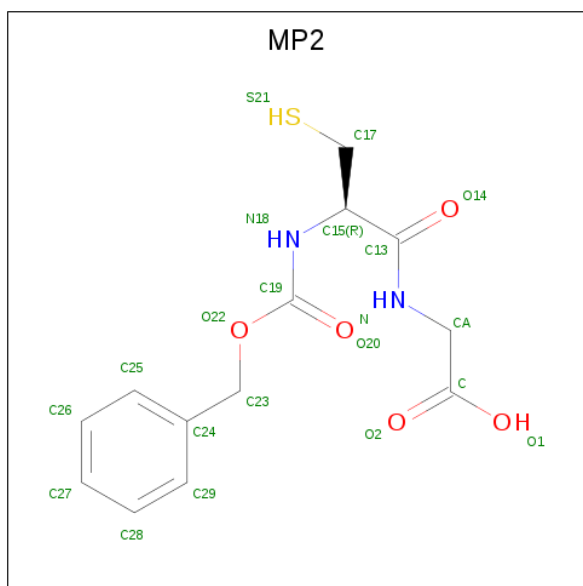
Mol	Chain	Residues	Atoms		ZeroOcc	AltConf
2	B	2	Total	Zn	0	0
			2	2		
2	A	2	Total	Zn	0	0
			2	2		

- Molecule 3 is SULFATE ION (three-letter code: SO4) (formula: O₄S).



Mol	Chain	Residues	Atoms	ZeroOcc	AltConf
3	A	1	Total O S 5 4 1	0	0
3	A	1	Total O S 5 4 1	0	0
3	A	1	Total O S 5 4 1	0	0
3	A	1	Total O S 5 4 1	0	0
3	A	1	Total O S 5 4 1	0	0
3	B	1	Total O S 5 4 1	0	0
3	B	1	Total O S 5 4 1	0	0

- Molecule 4 is N-[(BENZYLOXY)CARBONYL]-L-CYSTEINYLGLYCINE (three-letter code: MP2) (formula: C₁₃H₁₆N₂O₅S).



Mol	Chain	Residues	Atoms	ZeroOcc	AltConf
4	A	1	Total C N O S 21 13 2 5 1	0	0
4	B	1	Total C N O S 21 13 2 5 1	0	0

- Molecule 5 is GLYCEROL (three-letter code: GOL) (formula: C₃H₈O₃).



Mol	Chain	Residues	Atoms			ZeroOcc	AltConf
5	A	1	Total	C	O	0	0
			6	3	3		
5	B	1	Total	C	O	0	0
			6	3	3		
5	B	1	Total	C	O	0	0
			6	3	3		
5	B	1	Total	C	O	0	0
			6	3	3		

- Molecule 6 is water.

Mol	Chain	Residues	Atoms		ZeroOcc	AltConf
6	A	316	Total	O	0	3
			319	319		
6	B	279	Total	O	0	1
			280	280		

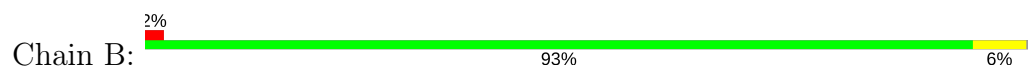
3 Residue-property plots [i](#)

These plots are drawn for all protein, RNA and DNA chains in the entry. The first graphic for a chain summarises the proportions of the various outlier classes displayed in the second graphic. The second graphic shows the sequence view annotated by issues in geometry and electron density. Residues are color-coded according to the number of geometric quality criteria for which they contain at least one outlier: green = 0, yellow = 1, orange = 2 and red = 3 or more. A red dot above a residue indicates a poor fit to the electron density ($RSRZ > 2$). Stretches of 2 or more consecutive residues without any outlier are shown as a green connector. Residues present in the sample, but not in the model, are shown in grey.

- Molecule 1: Metallo-beta-lactamase L1



- Molecule 1: Metallo-beta-lactamase L1



4 Data and refinement statistics

Property	Value	Source
Space group	P 62 2 2	Depositor
Cell constants a, b, c, α , β , γ	105.05Å 105.05Å 196.70Å 90.00° 90.00° 120.00°	Depositor
Resolution (Å)	19.46 – 1.80 19.46 – 1.80	Depositor EDS
% Data completeness (in resolution range)	97.4 (19.46-1.80) 97.4 (19.46-1.80)	Depositor EDS
R_{merge}	0.07	Depositor
R_{sym}	0.07	Depositor
$\langle I/\sigma(I) \rangle$ ¹	3.61 (at 1.80Å)	Xtriage
Refinement program	REFMAC 5.1.24	Depositor
R, R_{free}	0.149 , 0.186 0.163 , 0.157	Depositor DCC
R_{free} test set	2934 reflections (5.03%)	wwPDB-VP
Wilson B-factor (Å ²)	15.4	Xtriage
Anisotropy	0.013	Xtriage
Bulk solvent k_{sol} (e/Å ³), B_{sol} (Å ²)	0.38 , 52.0	EDS
L-test for twinning ²	$\langle L \rangle = 0.48$, $\langle L^2 \rangle = 0.31$	Xtriage
Estimated twinning fraction	No twinning to report.	Xtriage
F_o, F_c correlation	0.97	EDS
Total number of atoms	4778	wwPDB-VP
Average B, all atoms (Å ²)	17.0	wwPDB-VP

Xtriage's analysis on translational NCS is as follows: *The analyses of the Patterson function reveals a significant off-origin peak that is 80.87 % of the origin peak, indicating pseudo-translational symmetry. The chance of finding a peak of this or larger height randomly in a structure without pseudo-translational symmetry is equal to 4.0492e-07. The detected translational NCS is most likely also responsible for the elevated intensity ratio.*

¹Intensities estimated from amplitudes.

²Theoretical values of $\langle |L| \rangle$, $\langle L^2 \rangle$ for acentric reflections are 0.5, 0.333 respectively for untwinned datasets, and 0.375, 0.2 for perfectly twinned datasets.

5 Model quality [i](#)

5.1 Standard geometry [i](#)

Bond lengths and bond angles in the following residue types are not validated in this section: GOL, ZN, MP2, SO4

The Z score for a bond length (or angle) is the number of standard deviations the observed value is removed from the expected value. A bond length (or angle) with $|Z| > 5$ is considered an outlier worth inspection. RMSZ is the root-mean-square of all Z scores of the bond lengths (or angles).

Mol	Chain	Bond lengths		Bond angles	
		RMSZ	$\# Z > 5$	RMSZ	$\# Z > 5$
1	A	0.78	7/2133 (0.3%)	0.84	4/2906 (0.1%)
1	B	0.99	8/2126 (0.4%)	0.84	4/2899 (0.1%)
All	All	0.89	15/4259 (0.4%)	0.84	8/5805 (0.1%)

Chiral center outliers are detected by calculating the chiral volume of a chiral center and verifying if the center is modelled as a planar moiety or with the opposite hand. A planarity outlier is detected by checking planarity of atoms in a peptide group, atoms in a mainchain group or atoms of a sidechain that are expected to be planar.

Mol	Chain	#Chirality outliers	#Planarity outliers
1	A	0	1

All (15) bond length outliers are listed below:

Mol	Chain	Res	Type	Atoms	Z	Observed(Å)	Ideal(Å)
1	B	24	GLU	CB-CG	27.38	2.04	1.52
1	B	31	ARG	CD-NE	-16.20	1.19	1.46
1	A	24	GLU	CB-CG	15.60	1.81	1.52
1	A	313	LYS	CE-NZ	-13.21	1.16	1.49
1	A	157	GLY	C-N	10.82	1.58	1.34
1	B	276[A]	ARG	C-N	9.50	1.55	1.34
1	B	276[B]	ARG	C-N	9.50	1.55	1.34
1	B	157	GLY	C-N	7.35	1.50	1.34
1	B	87	MET	C-N	7.14	1.47	1.34
1	A	57	THR	C-N	6.49	1.49	1.34
1	A	276[A]	ARG	C-N	5.93	1.47	1.34
1	A	276[B]	ARG	C-N	5.93	1.47	1.34
1	B	57	THR	C-N	5.43	1.46	1.34
1	B	166	PRO	C-N	5.24	1.46	1.34
1	A	87	MET	C-N	5.19	1.44	1.34

All (8) bond angle outliers are listed below:

Mol	Chain	Res	Type	Atoms	Z	Observed(°)	Ideal(°)
1	B	24	GLU	CA-CB-CG	-12.10	86.79	113.40
1	A	313	LYS	CD-CE-NZ	10.26	135.30	111.70
1	A	24	GLU	CA-CB-CG	-8.53	94.64	113.40
1	B	31	ARG	CG-CD-NE	6.88	126.24	111.80
1	A	102	ARG	NE-CZ-NH1	5.97	123.28	120.30
1	A	171	ASP	CB-CG-OD2	5.32	123.09	118.30
1	B	171	ASP	CB-CG-OD2	5.24	123.02	118.30
1	B	308	ASP	CB-CG-OD2	5.09	122.88	118.30

There are no chirality outliers.

All (1) planarity outliers are listed below:

Mol	Chain	Res	Type	Group
1	A	157	GLY	Mainchain

5.2 Too-close contacts ⓘ

In the following table, the Non-H and H(model) columns list the number of non-hydrogen atoms and hydrogen atoms in the chain respectively. The H(added) column lists the number of hydrogen atoms added and optimized by MolProbity. The Clashes column lists the number of clashes within the asymmetric unit, whereas Symm-Clashes lists symmetry related clashes.

Mol	Chain	Non-H	H(model)	H(added)	Clashes	Symm-Clashes
1	A	2037	0	1999	10	0
1	B	2037	0	2008	3	0
2	A	2	0	0	0	0
2	B	2	0	0	0	0
3	A	25	0	0	0	0
3	B	10	0	0	0	0
4	A	21	0	14	1	0
4	B	21	0	14	0	0
5	A	6	0	8	1	0
5	B	18	0	24	1	0
6	A	319	0	0	8	0
6	B	280	0	0	0	0
All	All	4778	0	4067	15	0

The all-atom clashscore is defined as the number of clashes found per 1000 atoms (including hydrogen atoms). The all-atom clashscore for this structure is 2.

All (15) close contacts within the same asymmetric unit are listed below, sorted by their clash

magnitude.

Atom-1	Atom-2	Interatomic distance (Å)	Clash overlap (Å)
1:A:212:LYS:HA	1:A:212:LYS:HE2	1.73	0.70
1:A:51:HIS:HD2	1:A:207:ASP:OD1	1.80	0.65
5:A:8:GOL:H32	6:A:1633:HOH:O	2.00	0.60
1:A:242[A]:GLU:HG3	6:A:1436:HOH:O	2.09	0.53
1:B:252:ARG:NH1	1:B:297[B]:LYS:HD2	2.26	0.51
1:A:201:THR:HG21	6:A:1533:HOH:O	2.14	0.46
1:A:306[B]:LYS:HD2	6:A:1650:HOH:O	2.16	0.45
1:A:306[A]:LYS:HD3	6:A:1680:HOH:O	2.16	0.44
1:A:232[B]:GLN:HE21	1:A:232[B]:GLN:HB2	1.63	0.44
1:B:51:HIS:HD2	1:B:207:ASP:OD1	2.01	0.44
4:A:1410:MP2:H26	6:A:1673:HOH:O	2.18	0.43
1:A:246:ARG:NE	6:A:1717:HOH:O	2.52	0.43
1:A:306[B]:LYS:HG3	6:A:1507:HOH:O	2.19	0.43
1:B:249:ALA:HA	5:B:9:GOL:H32	2.03	0.40
1:A:107:ARG:HG3	1:A:107:ARG:O	2.21	0.40

There are no symmetry-related clashes.

5.3 Torsion angles ⓘ

5.3.1 Protein backbone ⓘ

In the following table, the Percentiles column shows the percent Ramachandran outliers of the chain as a percentile score with respect to all X-ray entries followed by that with respect to entries of similar resolution.

The Analysed column shows the number of residues for which the backbone conformation was analysed, and the total number of residues.

Mol	Chain	Analysed	Favoured	Allowed	Outliers	Percentiles	
1	A	273/269 (102%)	264 (97%)	9 (3%)	0	100	100
1	B	272/269 (101%)	263 (97%)	8 (3%)	1 (0%)	36	22
All	All	545/538 (101%)	527 (97%)	17 (3%)	1 (0%)	49	34

All (1) Ramachandran outliers are listed below:

Mol	Chain	Res	Type
1	B	210	ASN

5.3.2 Protein sidechains [i](#)

In the following table, the Percentiles column shows the percent sidechain outliers of the chain as a percentile score with respect to all X-ray entries followed by that with respect to entries of similar resolution.

The Analysed column shows the number of residues for which the sidechain conformation was analysed, and the total number of residues.

Mol	Chain	Analysed	Rotameric	Outliers	Percentiles	
1	A	210/202 (104%)	208 (99%)	2 (1%)	78	74
1	B	209/202 (104%)	208 (100%)	1 (0%)	90	89
All	All	419/404 (104%)	416 (99%)	3 (1%)	85	83

All (3) residues with a non-rotameric sidechain are listed below:

Mol	Chain	Res	Type
1	A	237	TYR
1	A	313	LYS
1	B	237	TYR

Some sidechains can be flipped to improve hydrogen bonding and reduce clashes. All (2) such sidechains are listed below:

Mol	Chain	Res	Type
1	A	51	HIS
1	B	41	GLN

5.3.3 RNA [i](#)

There are no RNA molecules in this entry.

5.4 Non-standard residues in protein, DNA, RNA chains [i](#)

There are no non-standard protein/DNA/RNA residues in this entry.

5.5 Carbohydrates [i](#)

There are no carbohydrates in this entry.

5.6 Ligand geometry

Of 17 ligands modelled in this entry, 4 are monoatomic - leaving 13 for Mogul analysis.

In the following table, the Counts columns list the number of bonds (or angles) for which Mogul statistics could be retrieved, the number of bonds (or angles) that are observed in the model and the number of bonds (or angles) that are defined in the Chemical Component Dictionary. The Link column lists molecule types, if any, to which the group is linked. The Z score for a bond length (or angle) is the number of standard deviations the observed value is removed from the expected value. A bond length (or angle) with $|Z| > 2$ is considered an outlier worth inspection. RMSZ is the root-mean-square of all Z scores of the bond lengths (or angles).

Mol	Type	Chain	Res	Link	Bond lengths			Bond angles		
					Counts	RMSZ	# Z > 2	Counts	RMSZ	# Z > 2
4	MP2	A	1410	2	18,21,21	1.32	1 (5%)	23,26,26	1.51	4 (17%)
3	SO4	A	2	-	4,4,4	0.25	0	6,6,6	0.11	0
3	SO4	A	3	-	4,4,4	0.40	0	6,6,6	0.38	0
3	SO4	A	4	-	4,4,4	0.31	0	6,6,6	0.35	0
3	SO4	A	5	-	4,4,4	0.15	0	6,6,6	0.12	0
3	SO4	A	6	-	4,4,4	0.12	0	6,6,6	0.27	0
5	GOL	A	8	-	5,5,5	0.60	0	5,5,5	0.56	0
3	SO4	B	1	-	4,4,4	0.08	0	6,6,6	0.13	0
5	GOL	B	10	-	5,5,5	0.38	0	5,5,5	0.42	0
5	GOL	B	11	-	5,5,5	0.51	0	5,5,5	0.55	0
4	MP2	B	2410	2	18,21,21	1.34	1 (5%)	23,26,26	1.11	2 (8%)
3	SO4	B	7	-	4,4,4	0.26	0	6,6,6	0.25	0
5	GOL	B	9	-	5,5,5	0.40	0	5,5,5	0.84	0

In the following table, the Chirals column lists the number of chiral outliers, the number of chiral centers analysed, the number of these observed in the model and the number defined in the Chemical Component Dictionary. Similar counts are reported in the Torsion and Rings columns. '-' means no outliers of that kind were identified.

Mol	Type	Chain	Res	Link	Chirals	Torsions	Rings
4	MP2	A	1410	2	-	0/18/20/20	0/1/1/1
3	SO4	A	2	-	-	0/0/0/0	0/0/0/0
3	SO4	A	3	-	-	0/0/0/0	0/0/0/0
3	SO4	A	4	-	-	0/0/0/0	0/0/0/0
3	SO4	A	5	-	-	0/0/0/0	0/0/0/0
3	SO4	A	6	-	-	0/0/0/0	0/0/0/0
5	GOL	A	8	-	-	0/4/4/4	0/0/0/0
3	SO4	B	1	-	-	0/0/0/0	0/0/0/0
5	GOL	B	10	-	-	0/4/4/4	0/0/0/0
5	GOL	B	11	-	-	0/4/4/4	0/0/0/0
4	MP2	B	2410	2	-	0/18/20/20	0/1/1/1

Continued on next page...

Continued from previous page...

Mol	Type	Chain	Res	Link	Chirals	Torsions	Rings
3	SO4	B	7	-	-	0/0/0/0	0/0/0/0
5	GOL	B	9	-	-	0/4/4/4	0/0/0/0

All (2) bond length outliers are listed below:

Mol	Chain	Res	Type	Atoms	Z	Observed(Å)	Ideal(Å)
4	B	2410	MP2	O22-C19	5.10	1.45	1.35
4	A	1410	MP2	O22-C19	5.21	1.45	1.35

All (6) bond angle outliers are listed below:

Mol	Chain	Res	Type	Atoms	Z	Observed(°)	Ideal(°)
4	A	1410	MP2	C17-C15-N18	-2.88	107.23	111.39
4	A	1410	MP2	O22-C19-O20	-2.15	119.99	124.22
4	B	2410	MP2	O22-C19-O20	-2.13	120.03	124.22
4	A	1410	MP2	C15-C13-N	2.73	122.15	116.57
4	B	2410	MP2	O22-C19-N18	2.79	116.39	110.53
4	A	1410	MP2	O22-C19-N18	3.07	116.98	110.53

There are no chirality outliers.

There are no torsion outliers.

There are no ring outliers.

3 monomers are involved in 3 short contacts:

Mol	Chain	Res	Type	Clashes	Symm-Clashes
4	A	1410	MP2	1	0
5	A	8	GOL	1	0
5	B	9	GOL	1	0

5.7 Other polymers [i](#)

There are no such residues in this entry.

5.8 Polymer linkage issues [i](#)

There are no chain breaks in this entry.

6 Fit of model and data [i](#)

6.1 Protein, DNA and RNA chains [i](#)

In the following table, the column labelled ‘#RSRZ > 2’ contains the number (and percentage) of RSRZ outliers, followed by percent RSRZ outliers for the chain as percentile scores relative to all X-ray entries and entries of similar resolution. The OWAB column contains the minimum, median, 95th percentile and maximum values of the occupancy-weighted average B-factor per residue. The column labelled ‘Q < 0.9’ lists the number of (and percentage) of residues with an average occupancy less than 0.9.

Mol	Chain	Analysed	<RSRZ>	#RSRZ>2	OWAB(Å ²)	Q<0.9
1	A	266/269 (98%)	-0.49	5 (1%) 66 63	9, 14, 23, 32	4 (1%)
1	B	266/269 (98%)	-0.40	5 (1%) 66 63	9, 15, 26, 34	3 (1%)
All	All	532/538 (98%)	-0.44	10 (1%) 66 63	9, 14, 25, 34	7 (1%)

All (10) RSRZ outliers are listed below:

Mol	Chain	Res	Type	RSRZ
1	A	275	ALA	3.4
1	B	275	ALA	3.4
1	B	210	ASN	3.3
1	B	317	GLY	3.1
1	A	24	GLU	2.9
1	B	107[A]	ARG	2.6
1	B	24	GLU	2.5
1	A	317[A]	GLY	2.3
1	A	211	GLY	2.2
1	A	107	ARG	2.2

6.2 Non-standard residues in protein, DNA, RNA chains [i](#)

There are no non-standard protein/DNA/RNA residues in this entry.

6.3 Carbohydrates [i](#)

There are no carbohydrates in this entry.

6.4 Ligands [i](#)

In the following table, the Atoms column lists the number of modelled atoms in the group and the number defined in the chemical component dictionary. The B-factors column lists the minimum, median, 95th percentile and maximum values of B factors of atoms in the group. The column labelled 'Q< 0.9' lists the number of atoms with occupancy less than 0.9.

Mol	Type	Chain	Res	Atoms	RSCC	RSR	B-factors(Å ²)	Q<0.9
3	SO4	B	7	5/5	0.68	0.38	54,55,55,56	4
5	GOL	B	9	6/6	0.81	0.20	29,30,31,31	5
5	GOL	A	8	6/6	0.85	0.25	35,36,38,38	0
5	GOL	B	11	6/6	0.85	0.20	31,32,33,33	6
3	SO4	A	6	5/5	0.86	0.20	27,27,29,29	5
5	GOL	B	10	6/6	0.91	0.16	25,31,35,39	0
4	MP2	A	1410	21/21	0.92	0.21	15,36,41,41	0
3	SO4	A	5	5/5	0.94	0.17	31,31,32,32	5
4	MP2	B	2410	21/21	0.94	0.20	16,35,38,38	0
3	SO4	A	3	5/5	0.94	0.18	30,33,34,36	0
3	SO4	A	4	5/5	0.95	0.12	20,23,24,26	5
3	SO4	A	2	5/5	0.95	0.18	28,33,34,35	0
3	SO4	B	1	5/5	0.99	0.12	25,25,27,27	0
2	ZN	A	402	1/1	1.00	0.01	14,14,14,14	0
2	ZN	A	401	1/1	1.00	0.02	13,13,13,13	0
2	ZN	B	401	1/1	1.00	0.02	15,15,15,15	0
2	ZN	B	402	1/1	1.00	0.02	16,16,16,16	0

6.5 Other polymers [i](#)

There are no such residues in this entry.