



Full wwPDB X-ray Structure Validation Report ⓘ

Apr 1, 2019 – 11:36 PM EDT

PDB ID : 6G0M
Title : Phosphotriesterase PTE_C23_7
Authors : Dym, O.; Aggarwal, N.; Albeck, S.; Unger, T.; Hamer Rogotner, S.; Silman, I.; Leader, H.; Ashani, Y.; Goldsmith, M.; Greisen, P.; Tawfik, D.; Sussman, L.J.
Deposited on : 2018-03-19
Resolution : 1.80 Å(reported)

This is a Full wwPDB X-ray Structure Validation Report for a publicly released PDB entry.

We welcome your comments at validation@mail.wwpdb.org

A user guide is available at

<https://www.wwpdb.org/validation/2017/XrayValidationReportHelp>

with specific help available everywhere you see the ⓘ symbol.

The following versions of software and data (see [references ⓘ](#)) were used in the production of this report:

MolProbity : 4.02b-467
Mogul : 1.8.0 (224370), CSD as540be (2019)
Xtriage (Phenix) : 1.13
EDS : rb-20031633
Percentile statistics : 20171227.v01 (using entries in the PDB archive December 27th 2017)
Refmac : 5.8.0158
CCP4 : 7.0 (Gargrove)
Ideal geometry (proteins) : Engh & Huber (2001)
Ideal geometry (DNA, RNA) : Parkinson et al. (1996)
Validation Pipeline (wwPDB-VP) : rb-20031633

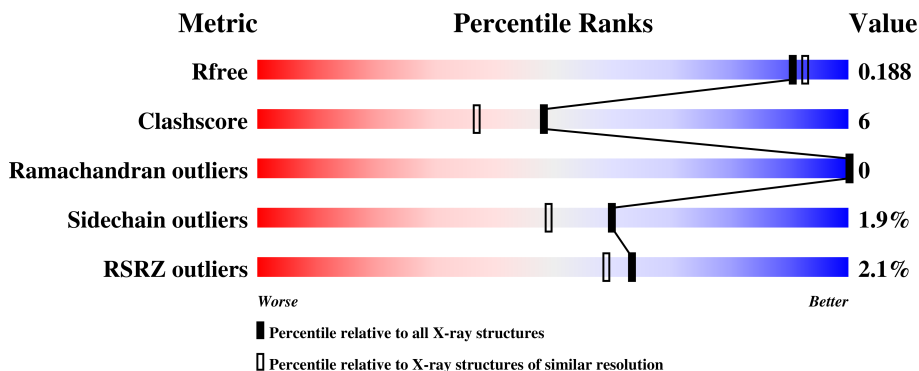
1 Overall quality at a glance

The following experimental techniques were used to determine the structure:

X-RAY DIFFRACTION

The reported resolution of this entry is 1.80 Å.

Percentile scores (ranging between 0-100) for global validation metrics of the entry are shown in the following graphic. The table shows the number of entries on which the scores are based.



Metric	Whole archive (#Entries)	Similar resolution (#Entries, resolution range(Å))
R_{free}	111664	5253 (1.80-1.80)
Clashscore	122126	6077 (1.80-1.80)
Ramachandran outliers	120053	6011 (1.80-1.80)
Sidechain outliers	120020	6010 (1.80-1.80)
RSRZ outliers	108989	5157 (1.80-1.80)

The table below summarises the geometric issues observed across the polymeric chains and their fit to the electron density. The red, orange, yellow and green segments on the lower bar indicate the fraction of residues that contain outliers for ≥ 3 , 2, 1 and 0 types of geometric quality criteria. A grey segment represents the fraction of residues that are not modelled. The numeric value for each fraction is indicated below the corresponding segment, with a dot representing fractions $\leq 5\%$. The upper red bar (where present) indicates the fraction of residues that have poor fit to the electron density. The numeric value is given above the bar.

Mol	Chain	Length	Quality of chain
1	A	332	<div> <div>2%</div> <div>87%</div> <div>11% ..</div> </div>

The following table lists non-polymeric compounds, carbohydrate monomers and non-standard residues in protein, DNA, RNA chains that are outliers for geometric or electron-density-fit criteria:

Mol	Type	Chain	Res	Chirality	Geometry	Clashes	Electron density
4	VX	A	414	-	-	X	-

Continued on next page...

Continued from previous page...

Mol	Type	Chain	Res	Chirality	Geometry	Clashes	Electron density
5	E8N	A	405	-	-	X	-
6	GOL	A	406	-	-	X	-

2 Entry composition [i](#)

There are 8 unique types of molecules in this entry. The entry contains 2867 atoms, of which 0 are hydrogens and 0 are deuteriums.

In the tables below, the ZeroOcc column contains the number of atoms modelled with zero occupancy, the AltConf column contains the number of residues with at least one atom in alternate conformation and the Trace column contains the number of residues modelled with at most 2 atoms.

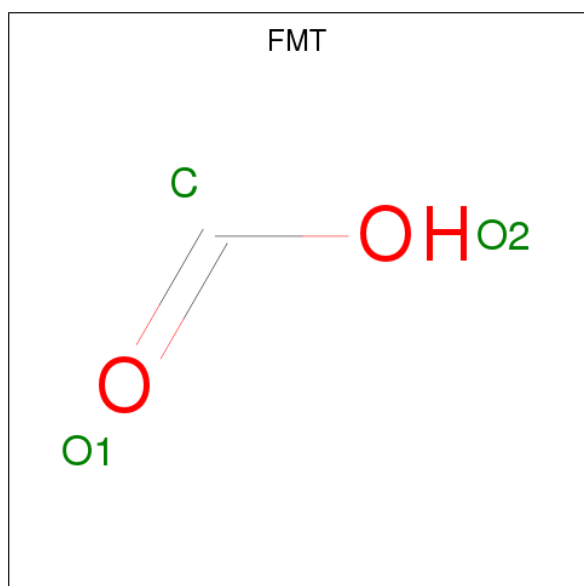
- Molecule 1 is a protein called Parathion hydrolase.

Mol	Chain	Residues	Atoms					ZeroOcc	AltConf	Trace
			Total	C	N	O	S			
1	A	330	2537	1596	454	480	7	0	5	0

There are 9 discrepancies between the modelled and reference sequences:

Chain	Residue	Modelled	Actual	Comment	Reference
A	77	ALA	LYS	conflict	UNP P0A434
A	80	VAL	ALA	conflict	UNP P0A434
A	132	GLU	PHE	conflict	UNP P0A434
A	173	ASN	THR	conflict	UNP P0A434
A	185	ARG	LYS	conflict	UNP P0A434
A	254	GLY	HIS	conflict	UNP P0A434
A	274	ASN	ILE	conflict	UNP P0A434
A	319	SER	ARG	conflict	UNP P0A434
A	342	SER	PRO	conflict	UNP P0A434

- Molecule 2 is FORMIC ACID (three-letter code: FMT) (formula: CH₂O₂).

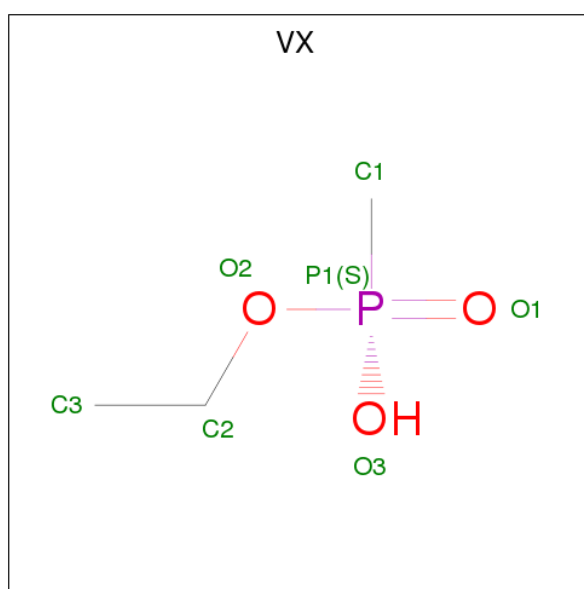


Mol	Chain	Residues	Atoms			ZeroOcc	AltConf
2	A	1	Total	C	O	0	0
			3	1	2		

- Molecule 3 is ZINC ION (three-letter code: ZN) (formula: Zn).

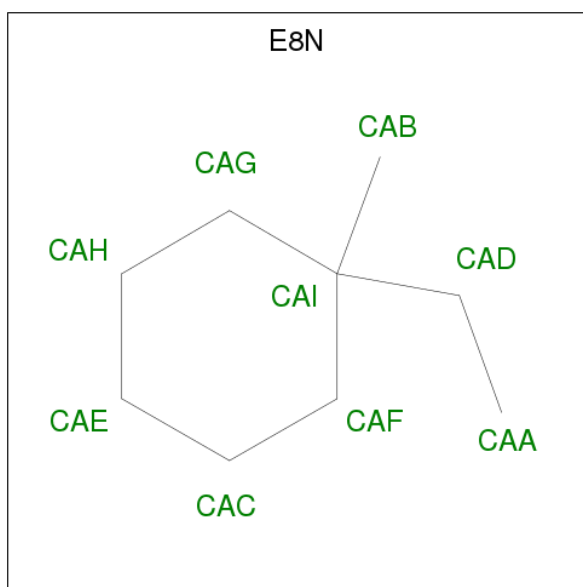
Mol	Chain	Residues	Atoms		ZeroOcc	AltConf
3	A	2	Total	Zn	0	0
			2	2		

- Molecule 4 is O-ETHYLMETHYLPHOSPHONIC ACID ESTER GROUP (three-letter code: VX) (formula: C₃H₉O₃P).



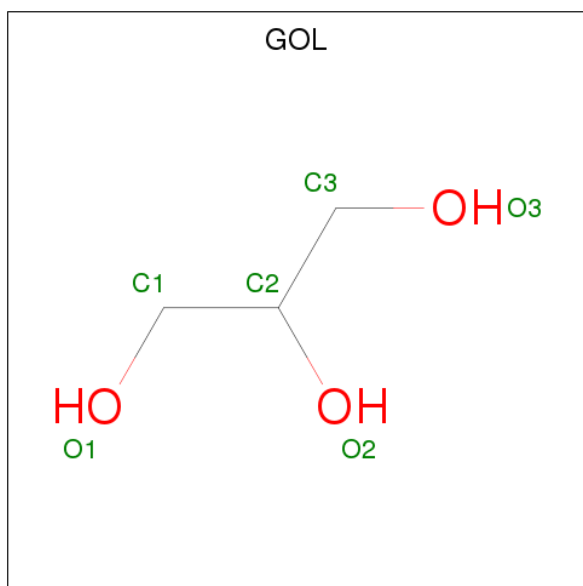
Mol	Chain	Residues	Atoms				ZeroOcc	AltConf
4	A	1	Total	C	O	P	0	0
			6	2	3	1		
4	A	1	Total	C	O	P	0	0
			7	3	3	1		

- Molecule 5 is 1-ethyl-1-methyl-cyclohexane (three-letter code: E8N) (formula: C₉H₁₈).



Mol	Chain	Residues	Atoms	ZeroOcc	AltConf
5	A	1	Total C 9 9	0	0

- Molecule 6 is GLYCEROL (three-letter code: GOL) (formula: $C_3H_8O_3$).



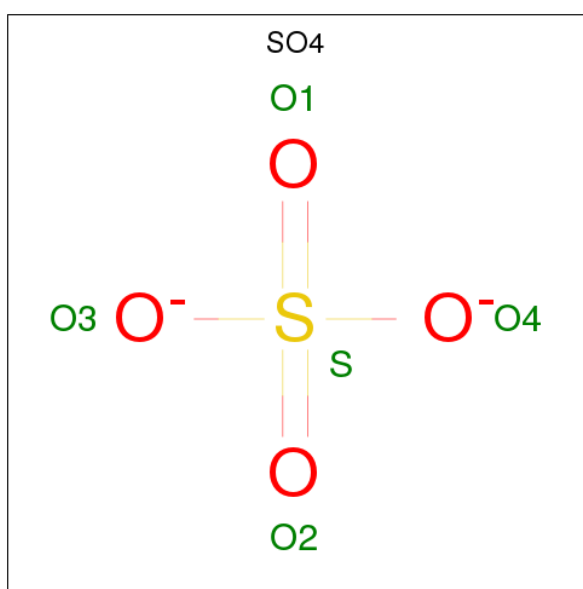
Mol	Chain	Residues	Atoms	ZeroOcc	AltConf
6	A	1	Total C O 6 3 3	0	0
6	A	1	Total C O 6 3 3	0	0
6	A	1	Total C O 6 3 3	0	0

Continued on next page...

Continued from previous page...

Mol	Chain	Residues	Atoms			ZeroOcc	AltConf
6	A	1	Total	C	O	0	0
			6	3	3		
6	A	1	Total	C	O	0	0
			6	3	3		
6	A	1	Total	C	O	0	0
			6	3	3		
6	A	1	Total	C	O	0	0
			6	3	3		

- Molecule 7 is SULFATE ION (three-letter code: SO4) (formula: O₄S).



Mol	Chain	Residues	Atoms			ZeroOcc	AltConf
7	A	1	Total	O	S	0	0
			5	4	1		
7	A	1	Total	O	S	0	0
			5	4	1		
7	A	1	Total	O	S	0	0
			5	4	1		
7	A	1	Total	O	S	0	0
			5	4	1		

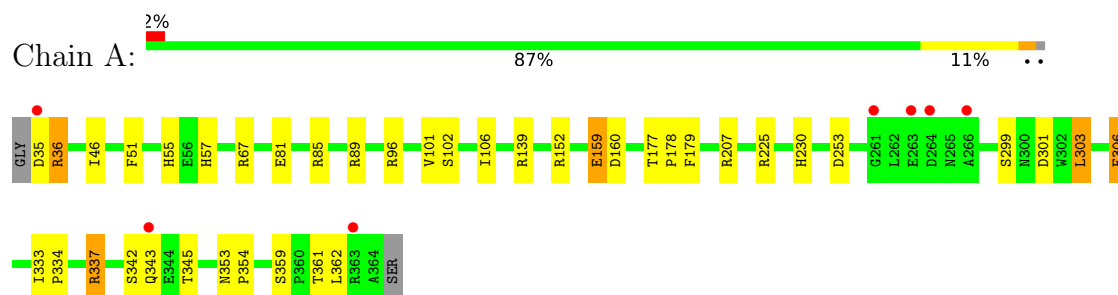
- Molecule 8 is water.

Mol	Chain	Residues	Atoms		ZeroOcc	AltConf
8	A	241	Total	O	0	0
			241	241		

3 Residue-property plots [i](#)

These plots are drawn for all protein, RNA and DNA chains in the entry. The first graphic for a chain summarises the proportions of the various outlier classes displayed in the second graphic. The second graphic shows the sequence view annotated by issues in geometry and electron density. Residues are color-coded according to the number of geometric quality criteria for which they contain at least one outlier: green = 0, yellow = 1, orange = 2 and red = 3 or more. A red dot above a residue indicates a poor fit to the electron density ($RSRZ > 2$). Stretches of 2 or more consecutive residues without any outlier are shown as a green connector. Residues present in the sample, but not in the model, are shown in grey.

- Molecule 1: Parathion hydrolase



4 Data and refinement statistics

Property	Value	Source
Space group	P 43 21 2	Depositor
Cell constants a, b, c, α , β , γ	69.45Å 69.45Å 186.97Å 90.00° 90.00° 90.00°	Depositor
Resolution (Å)	65.10 – 1.80 23.19 – 1.80	Depositor EDS
% Data completeness (in resolution range)	97.2 (65.10-1.80) 97.3 (23.19-1.80)	Depositor EDS
R_{merge}	0.02	Depositor
R_{sym}	(Not available)	Depositor
$\langle I/\sigma(I) \rangle$ ¹	4.60 (at 1.80Å)	Xtriage
Refinement program	REFMAC 5.8.0158	Depositor
R, R_{free}	0.149 , 0.180 0.164 , 0.188	Depositor DCC
R_{free} test set	2061 reflections (4.88%)	wwPDB-VP
Wilson B-factor (Å ²)	18.5	Xtriage
Anisotropy	0.190	Xtriage
Bulk solvent k_{sol} (e/Å ³), B_{sol} (Å ²)	0.41 , 42.2	EDS
L-test for twinning ²	$\langle L \rangle = 0.49$, $\langle L^2 \rangle = 0.33$	Xtriage
Estimated twinning fraction	No twinning to report.	Xtriage
F_o, F_c correlation	0.96	EDS
Total number of atoms	2867	wwPDB-VP
Average B, all atoms (Å ²)	19.0	wwPDB-VP

Xtriage's analysis on translational NCS is as follows: *The largest off-origin peak in the Patterson function is 4.93% of the height of the origin peak. No significant pseudotranslation is detected.*

¹Intensities estimated from amplitudes.

²Theoretical values of $\langle |L| \rangle$, $\langle L^2 \rangle$ for acentric reflections are 0.5, 0.333 respectively for untwinned datasets, and 0.375, 0.2 for perfectly twinned datasets.

5 Model quality [i](#)

5.1 Standard geometry [i](#)

Bond lengths and bond angles in the following residue types are not validated in this section: GOL, ZN, E8N, FMT, SO4, VX

The Z score for a bond length (or angle) is the number of standard deviations the observed value is removed from the expected value. A bond length (or angle) with $|Z| > 5$ is considered an outlier worth inspection. RMSZ is the root-mean-square of all Z scores of the bond lengths (or angles).

Mol	Chain	Bond lengths		Bond angles	
		RMSZ	$\# Z > 5$	RMSZ	$\# Z > 5$
1	A	1.09	1/2584 (0.0%)	1.19	20/3510 (0.6%)

All (1) bond length outliers are listed below:

Mol	Chain	Res	Type	Atoms	Z	Observed(Å)	Ideal(Å)
1	A	225	ARG	CZ-NH1	-5.04	1.26	1.33

All (20) bond angle outliers are listed below:

Mol	Chain	Res	Type	Atoms	Z	Observed(°)	Ideal(°)
1	A	139[A]	ARG	NE-CZ-NH2	-10.62	114.99	120.30
1	A	139[B]	ARG	NE-CZ-NH2	-10.62	114.99	120.30
1	A	139[A]	ARG	NE-CZ-NH1	10.55	125.58	120.30
1	A	139[B]	ARG	NE-CZ-NH1	10.55	125.58	120.30
1	A	96	ARG	NE-CZ-NH1	9.12	124.86	120.30
1	A	207	ARG	NE-CZ-NH1	9.08	124.84	120.30
1	A	152	ARG	NE-CZ-NH1	7.94	124.27	120.30
1	A	225	ARG	NE-CZ-NH1	7.00	123.80	120.30
1	A	207	ARG	NE-CZ-NH2	-6.88	116.86	120.30
1	A	160	ASP	CB-CG-OD1	6.79	124.42	118.30
1	A	36	ARG	NE-CZ-NH1	6.39	123.50	120.30
1	A	89	ARG	NE-CZ-NH1	6.37	123.49	120.30
1	A	301	ASP	CB-CG-OD1	6.27	123.95	118.30
1	A	306	PHE	CB-CG-CD1	5.53	124.67	120.80
1	A	301	ASP	CB-CG-OD2	-5.49	113.36	118.30
1	A	337	ARG	NE-CZ-NH1	5.36	122.98	120.30
1	A	159	GLU	OE1-CD-OE2	-5.25	117.00	123.30
1	A	96	ARG	NE-CZ-NH2	-5.18	117.71	120.30
1	A	67	ARG	NE-CZ-NH2	-5.10	117.75	120.30
1	A	152	ARG	NE-CZ-NH2	-5.05	117.78	120.30

There are no chirality outliers.

There are no planarity outliers.

5.2 Too-close contacts

In the following table, the Non-H and H(model) columns list the number of non-hydrogen atoms and hydrogen atoms in the chain respectively. The H(added) column lists the number of hydrogen atoms added and optimized by MolProbity. The Clashes column lists the number of clashes within the asymmetric unit, whereas Symm-Clashes lists symmetry related clashes.

Mol	Chain	Non-H	H(model)	H(added)	Clashes	Symm-Clashes
1	A	2537	0	2541	32	0
2	A	3	0	0	0	0
3	A	2	0	0	0	0
4	A	13	0	11	4	0
5	A	9	0	0	11	0
6	A	42	0	55	6	0
7	A	20	0	0	0	0
8	A	241	0	0	3	0
All	All	2867	0	2607	34	0

The all-atom clashscore is defined as the number of clashes found per 1000 atoms (including hydrogen atoms). The all-atom clashscore for this structure is 6.

All (34) close contacts within the same asymmetric unit are listed below, sorted by their clash magnitude.

Atom-1	Atom-2	Interatomic distance (Å)	Clash overlap (Å)
1:A:345:THR:OG1	5:A:405:E8N:CAE	1.76	1.33
1:A:345:THR:HG1	5:A:405:E8N:CAE	1.58	1.12
1:A:342:SER:OG	5:A:405:E8N:CAE	1.97	1.11
1:A:362:LEU:H	6:A:406:GOL:H11	1.15	1.06
1:A:362:LEU:H	6:A:406:GOL:C1	1.83	0.90
1:A:345:THR:CB	5:A:405:E8N:CAE	2.57	0.82
1:A:362:LEU:N	6:A:406:GOL:H11	1.96	0.80
1:A:342:SER:H	5:A:405:E8N:CAH	1.96	0.78
1:A:345:THR:OG1	5:A:405:E8N:CAC	2.40	0.69
1:A:345:THR:HG1	5:A:405:E8N:CAC	2.05	0.68
1:A:179:PHE:H	4:A:414:VX:H2	1.60	0.67
1:A:361:THR:HA	6:A:406:GOL:H31	1.81	0.63
1:A:342:SER:CB	5:A:405:E8N:CAE	2.77	0.62
1:A:337:ARG:CZ	1:A:343:GLN:HG3	2.31	0.60
1:A:342:SER:OG	5:A:405:E8N:CAC	2.54	0.55

Continued on next page...

Continued from previous page...

Atom-1	Atom-2	Interatomic distance (Å)	Clash overlap (Å)
5:A:405:E8N:CAC	8:A:677:HOH:O	2.53	0.55
1:A:178:PRO:HD2	4:A:414:VX:H1	1.90	0.53
1:A:177:THR:HB	4:A:414:VX:H1	1.91	0.52
1:A:333:ILE:HB	1:A:334:PRO:HD3	1.91	0.51
1:A:35:ASP:HB2	1:A:359[B]:SER:OG	2.13	0.49
1:A:55:HIS:HD2	8:A:560:HOH:O	1.95	0.49
1:A:359[A]:SER:HB2	8:A:509:HOH:O	2.12	0.48
1:A:81:GLU:HG2	1:A:85:ARG:NH1	2.28	0.48
1:A:106:ILE:O	1:A:106:ILE:HG22	2.14	0.47
1:A:230:HIS:HD2	1:A:253:ASP:OD1	1.98	0.46
1:A:353:ASN:HB2	1:A:354:PRO:HD3	1.99	0.44
1:A:57:HIS:O	1:A:303:LEU:HA	2.18	0.44
5:A:405:E8N:CAB	6:A:411:GOL:O3	2.68	0.42
1:A:35:ASP:O	1:A:46:ILE:HD11	2.19	0.41
1:A:159:GLU:OE2	6:A:408:GOL:H11	2.19	0.41
1:A:35:ASP:O	1:A:46:ILE:CD1	2.68	0.41
1:A:57:HIS:HD2	1:A:102:SER:OG	2.02	0.41
1:A:55:HIS:CD2	1:A:101:VAL:HG21	2.56	0.40
1:A:179:PHE:N	4:A:414:VX:H2	2.33	0.40

There are no symmetry-related clashes.

5.3 Torsion angles

5.3.1 Protein backbone

In the following table, the Percentiles column shows the percent Ramachandran outliers of the chain as a percentile score with respect to all X-ray entries followed by that with respect to entries of similar resolution.

The Analysed column shows the number of residues for which the backbone conformation was analysed, and the total number of residues.

Mol	Chain	Analysed	Favoured	Allowed	Outliers	Percentiles	
1	A	333/332 (100%)	325 (98%)	8 (2%)	0	100	100

There are no Ramachandran outliers to report.

5.3.2 Protein sidechains ⓘ

In the following table, the Percentiles column shows the percent sidechain outliers of the chain as a percentile score with respect to all X-ray entries followed by that with respect to entries of similar resolution.

The Analysed column shows the number of residues for which the sidechain conformation was analysed, and the total number of residues.

Mol	Chain	Analysed	Rotameric	Outliers	Percentiles	
1	A	267/265 (101%)	262 (98%)	5 (2%)	60	49

All (5) residues with a non-rotameric sidechain are listed below:

Mol	Chain	Res	Type
1	A	36	ARG
1	A	51	PHE
1	A	299	SER
1	A	303	LEU
1	A	306	PHE

Some sidechains can be flipped to improve hydrogen bonding and reduce clashes. All (4) such sidechains are listed below:

Mol	Chain	Res	Type
1	A	55	HIS
1	A	57	HIS
1	A	230	HIS
1	A	312	ASN

5.3.3 RNA ⓘ

There are no RNA molecules in this entry.

5.4 Non-standard residues in protein, DNA, RNA chains ⓘ

There are no non-standard protein/DNA/RNA residues in this entry.

5.5 Carbohydrates ⓘ

There are no carbohydrates in this entry.

5.6 Ligand geometry

Of 17 ligands modelled in this entry, 2 are monoatomic - leaving 15 for Mogul analysis.

In the following table, the Counts columns list the number of bonds (or angles) for which Mogul statistics could be retrieved, the number of bonds (or angles) that are observed in the model and the number of bonds (or angles) that are defined in the Chemical Component Dictionary. The Link column lists molecule types, if any, to which the group is linked. The Z score for a bond length (or angle) is the number of standard deviations the observed value is removed from the expected value. A bond length (or angle) with $|Z| > 2$ is considered an outlier worth inspection. RMSZ is the root-mean-square of all Z scores of the bond lengths (or angles).

Mol	Type	Chain	Res	Link	Bond lengths			Bond angles		
					Counts	RMSZ	# Z > 2	Counts	RMSZ	# Z > 2
2	FMT	A	401	1,3	0,2,2	0.00	-	0,1,1	0.00	-
4	VX	A	404	3	5,5,6	0.90	0	2,7,8	0.90	0
5	E8N	A	405	-	8,9,9	4.00	5 (62%)	8,12,12	2.40	4 (50%)
6	GOL	A	406	-	5,5,5	0.28	0	5,5,5	0.46	0
6	GOL	A	407	-	5,5,5	0.66	0	5,5,5	1.92	3 (60%)
6	GOL	A	408	-	5,5,5	0.80	0	5,5,5	1.19	0
6	GOL	A	409	-	5,5,5	0.62	0	5,5,5	0.56	0
6	GOL	A	410	-	5,5,5	0.79	0	5,5,5	1.77	1 (20%)
6	GOL	A	411	-	5,5,5	0.56	0	5,5,5	2.00	2 (40%)
6	GOL	A	412	-	5,5,5	1.11	0	5,5,5	0.96	0
7	SO4	A	413	-	4,4,4	0.57	0	6,6,6	1.11	0
4	VX	A	414	-	6,6,6	8.63	3 (50%)	6,8,8	2.42	2 (33%)
7	SO4	A	415	-	4,4,4	1.07	0	6,6,6	0.78	0
7	SO4	A	416	-	4,4,4	0.78	0	6,6,6	0.76	0
7	SO4	A	417	-	4,4,4	0.95	0	6,6,6	0.64	0

In the following table, the Chirals column lists the number of chiral outliers, the number of chiral centers analysed, the number of these observed in the model and the number defined in the Chemical Component Dictionary. Similar counts are reported in the Torsion and Rings columns. '-' means no outliers of that kind were identified.

Mol	Type	Chain	Res	Link	Chirals	Torsions	Rings
2	FMT	A	401	1,3	-	0/0/0/0	0/0/0/0
4	VX	A	404	3	-	0/2/3/4	0/0/0/0
5	E8N	A	405	-	-	0/3/13/13	0/1/1/1
6	GOL	A	406	-	-	0/4/4/4	0/0/0/0
6	GOL	A	407	-	-	0/4/4/4	0/0/0/0
6	GOL	A	408	-	-	0/4/4/4	0/0/0/0
6	GOL	A	409	-	-	0/4/4/4	0/0/0/0
6	GOL	A	410	-	-	0/4/4/4	0/0/0/0

Continued on next page...

Continued from previous page...

Mol	Type	Chain	Res	Link	Chirals	Torsions	Rings
6	GOL	A	411	-	-	0/4/4/4	0/0/0/0
6	GOL	A	412	-	-	0/4/4/4	0/0/0/0
7	SO4	A	413	-	-	0/0/0/0	0/0/0/0
4	VX	A	414	-	-	0/4/4/4	0/0/0/0
7	SO4	A	415	-	-	0/0/0/0	0/0/0/0
7	SO4	A	416	-	-	0/0/0/0	0/0/0/0
7	SO4	A	417	-	-	0/0/0/0	0/0/0/0

All (8) bond length outliers are listed below:

Mol	Chain	Res	Type	Atoms	Z	Observed(Å)	Ideal(Å)
5	A	405	E8N	CAG-CAH	-7.05	1.34	1.52
5	A	405	E8N	CAH-CAE	-6.02	1.27	1.51
4	A	414	VX	P1-O1	-4.04	1.44	1.50
5	A	405	E8N	CAF-CAC	-3.41	1.43	1.52
5	A	405	E8N	CAG-CAI	-3.01	1.46	1.53
5	A	405	E8N	CAE-CAC	4.36	1.68	1.51
4	A	414	VX	P1-C1	4.79	1.89	1.77
4	A	414	VX	P1-O2	20.10	1.88	1.57

All (12) bond angle outliers are listed below:

Mol	Chain	Res	Type	Atoms	Z	Observed(°)	Ideal(°)
5	A	405	E8N	CAF-CAC-CAE	-4.28	104.72	111.38
5	A	405	E8N	CAA-CAD-CAI	-3.52	104.09	115.43
6	A	411	GOL	O3-C3-C2	-3.33	94.04	110.12
5	A	405	E8N	CAG-CAH-CAE	-2.47	107.53	111.38
6	A	407	GOL	O3-C3-C2	-2.06	100.17	110.12
6	A	407	GOL	O2-C2-C1	2.25	119.03	109.12
6	A	407	GOL	C3-C2-C1	2.42	121.17	111.75
6	A	411	GOL	O2-C2-C1	2.63	120.72	109.12
5	A	405	E8N	CAH-CAE-CAC	2.65	119.43	111.18
4	A	414	VX	O2-P1-C1	3.02	113.44	105.49
6	A	410	GOL	O1-C1-C2	3.25	125.80	110.12
4	A	414	VX	P1-O2-C2	4.35	141.68	122.98

There are no chirality outliers.

There are no torsion outliers.

There are no ring outliers.

5 monomers are involved in 20 short contacts:

Mol	Chain	Res	Type	Clashes	Symm-Clashes
5	A	405	E8N	11	0
6	A	406	GOL	4	0
6	A	408	GOL	1	0
6	A	411	GOL	1	0
4	A	414	VX	4	0

5.7 Other polymers [i](#)

There are no such residues in this entry.

5.8 Polymer linkage issues [i](#)

There are no chain breaks in this entry.

6 Fit of model and data [i](#)

6.1 Protein, DNA and RNA chains [i](#)

In the following table, the column labelled '#RSRZ > 2' contains the number (and percentage) of RSRZ outliers, followed by percent RSRZ outliers for the chain as percentile scores relative to all X-ray entries and entries of similar resolution. The OWAB column contains the minimum, median, 95th percentile and maximum values of the occupancy-weighted average B-factor per residue. The column labelled 'Q < 0.9' lists the number of (and percentage) of residues with an average occupancy less than 0.9.

Mol	Chain	Analysed	<RSRZ>	#RSRZ>2	OWAB(Å ²)	Q<0.9
1	A	330/332 (99%)	-0.28	7 (2%) 63 59	12, 16, 31, 76	0

All (7) RSRZ outliers are listed below:

Mol	Chain	Res	Type	RSRZ
1	A	263	GLU	5.8
1	A	264	ASP	4.5
1	A	261	GLY	3.4
1	A	343	GLN	3.2
1	A	35	ASP	3.2
1	A	266	ALA	2.6
1	A	363	ARG	2.3

6.2 Non-standard residues in protein, DNA, RNA chains [i](#)

There are no non-standard protein/DNA/RNA residues in this entry.

6.3 Carbohydrates [i](#)

There are no carbohydrates in this entry.

6.4 Ligands [i](#)

In the following table, the Atoms column lists the number of modelled atoms in the group and the number defined in the chemical component dictionary. The B-factors column lists the minimum, median, 95th percentile and maximum values of B factors of atoms in the group. The column labelled 'Q < 0.9' lists the number of atoms with occupancy less than 0.9.

Mol	Type	Chain	Res	Atoms	RSCC	RSR	B-factors(Å ²)	Q<0.9
6	GOL	A	406	6/6	0.64	0.35	48,53,57,61	0

Continued on next page...

Continued from previous page...

Mol	Type	Chain	Res	Atoms	RSCC	RSR	B-factors(\AA^2)	Q<0.9
6	GOL	A	411	6/6	0.68	0.28	41,48,54,55	0
7	SO4	A	416	5/5	0.77	0.38	59,74,81,82	0
7	SO4	A	417	5/5	0.81	0.34	40,55,62,64	0
6	GOL	A	409	6/6	0.82	0.22	29,40,45,54	0
4	VX	A	414	7/7	0.82	0.18	16,27,34,40	0
6	GOL	A	410	6/6	0.83	0.21	24,33,40,45	0
5	E8N	A	405	9/9	0.89	0.16	14,21,24,34	0
6	GOL	A	412	6/6	0.91	0.14	22,34,46,48	0
6	GOL	A	408	6/6	0.94	0.09	24,32,35,38	0
6	GOL	A	407	6/6	0.95	0.14	16,24,32,35	0
7	SO4	A	415	5/5	0.97	0.26	26,29,37,37	0
7	SO4	A	413	5/5	0.97	0.20	45,46,57,58	0
2	FMT	A	401	3/3	0.98	0.05	11,11,11,13	0
4	VX	A	404	6/7	0.98	0.09	12,20,30,34	0
3	ZN	A	402	1/1	1.00	0.02	14,14,14,14	0
3	ZN	A	403	1/1	1.00	0.03	13,13,13,13	0

6.5 Other polymers [i](#)

There are no such residues in this entry.