



# wwPDB X-ray Structure Validation Summary Report ⓘ

Mar 8, 2018 – 07:24 pm GMT

PDB ID : 4GO2  
Title : Crystal structure of the c-terminal domain of 10'formyltetrahydrofolate dehydrogenase in complex with Thio-NADP  
Authors : Tsybovsky, Y.  
Deposited on : 2012-08-18  
Resolution : 2.28 Å(reported)

This is a wwPDB X-ray Structure Validation Summary Report for a publicly released PDB entry.

We welcome your comments at [validation@mail.wwpdb.org](mailto:validation@mail.wwpdb.org)

A user guide is available at

<https://www.wwpdb.org/validation/2017/XrayValidationReportHelp>

with specific help available everywhere you see the ⓘ symbol.

---

The following versions of software and data (see [references ⓘ](#)) were used in the production of this report:

MolProbity : 4.02b-467  
Mogul : 1.7.3 (157068), CSD as539be (2018)  
Xtriage (Phenix) : 1.13  
EDS : trunk30967  
Percentile statistics : 20171227.v01 (using entries in the PDB archive December 27th 2017)  
Refmac : 5.8.0158  
CCP4 : 7.0 (Gargrove)  
Ideal geometry (proteins) : Engh & Huber (2001)  
Ideal geometry (DNA, RNA) : Parkinson et al. (1996)  
Validation Pipeline (wwPDB-VP) : trunk30967

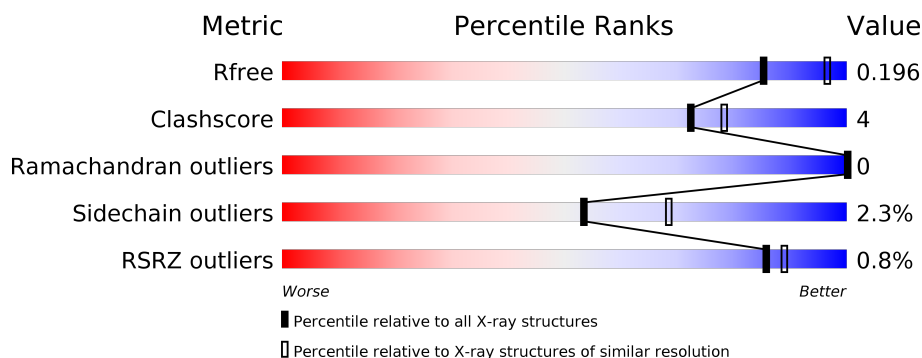
# 1 Overall quality at a glance

The following experimental techniques were used to determine the structure:

## *X-RAY DIFFRACTION*

The reported resolution of this entry is 2.28 Å.

Percentile scores (ranging between 0-100) for global validation metrics of the entry are shown in the following graphic. The table shows the number of entries on which the scores are based.



Metric	Whole archive (#Entries)	Similar resolution (#Entries, resolution range(Å))
$R_{free}$	111664	6121 (2.30-2.26)
Clashscore	122126	6842 (2.30-2.26)
Ramachandran outliers	120053	6755 (2.30-2.26)
Sidechain outliers	120020	6755 (2.30-2.26)
RSRZ outliers	108989	5992 (2.30-2.26)

The table below summarises the geometric issues observed across the polymeric chains and their fit to the electron density. The red, orange, yellow and green segments on the lower bar indicate the fraction of residues that contain outliers for  $\geq 3$ , 2, 1 and 0 types of geometric quality criteria. A grey segment represents the fraction of residues that are not modelled. The numeric value for each fraction is indicated below the corresponding segment, with a dot representing fractions  $\leq 5\%$ . The upper red bar (where present) indicates the fraction of residues that have poor fit to the electron density. The numeric value is given above the bar.

Mol	Chain	Length	Quality of chain
1	A	517	<div> <div>%</div> <div> <div></div> <div>88%</div> <div>8%</div> <div>• •</div> </div> </div>
1	B	517	<div> <div>%</div> <div> <div></div> <div>90%</div> <div>6%</div> <div>• •</div> </div> </div>
1	C	517	<div> <div></div> <div> <div>87%</div> <div>9%</div> <div>• •</div> </div> </div>
1	D	517	<div> <div>%</div> <div> <div></div> <div>87%</div> <div>9%</div> <div>•</div> </div> </div>

## 2 Entry composition

There are 5 unique types of molecules in this entry. The entry contains 17137 atoms, of which 0 are hydrogens and 0 are deuteriums.

In the tables below, the ZeroOcc column contains the number of atoms modelled with zero occupancy, the AltConf column contains the number of residues with at least one atom in alternate conformation and the Trace column contains the number of residues modelled with at most 2 atoms.

- Molecule 1 is a protein called Cytosolic 10-formyltetrahydrofolate dehydrogenase.

Mol	Chain	Residues	Atoms					ZeroOcc	AltConf	Trace
1	A	498	Total	C	N	O	S	26	22	0
			3930	2497	674	737	22			
1	B	498	Total	C	N	O	S	16	23	0
			3928	2494	675	737	22			
1	C	498	Total	C	N	O	S	17	20	0
			3914	2486	676	730	22			
1	D	498	Total	C	N	O	S	15	21	0
			3922	2492	672	736	22			

There are 44 discrepancies between the modelled and reference sequences:

Chain	Residue	Modelled	Actual	Comment	Reference
A	386	MET	-	EXPRESSION TAG	UNP P28037
A	387	ARG	-	EXPRESSION TAG	UNP P28037
A	388	GLY	-	EXPRESSION TAG	UNP P28037
A	389	SER	-	EXPRESSION TAG	UNP P28037
A	390	HIS	-	EXPRESSION TAG	UNP P28037
A	391	HIS	-	EXPRESSION TAG	UNP P28037
A	392	HIS	-	EXPRESSION TAG	UNP P28037
A	393	HIS	-	EXPRESSION TAG	UNP P28037
A	394	HIS	-	EXPRESSION TAG	UNP P28037
A	395	THR	-	EXPRESSION TAG	UNP P28037
A	396	THR	-	EXPRESSION TAG	UNP P28037
B	386	MET	-	EXPRESSION TAG	UNP P28037
B	387	ARG	-	EXPRESSION TAG	UNP P28037
B	388	GLY	-	EXPRESSION TAG	UNP P28037
B	389	SER	-	EXPRESSION TAG	UNP P28037
B	390	HIS	-	EXPRESSION TAG	UNP P28037
B	391	HIS	-	EXPRESSION TAG	UNP P28037
B	392	HIS	-	EXPRESSION TAG	UNP P28037
B	393	HIS	-	EXPRESSION TAG	UNP P28037
B	394	HIS	-	EXPRESSION TAG	UNP P28037
B	395	THR	-	EXPRESSION TAG	UNP P28037

*Continued on next page...*

Continued from previous page...

Chain	Residue	Modelled	Actual	Comment	Reference
B	396	THR	-	EXPRESSION TAG	UNP P28037
C	386	MET	-	EXPRESSION TAG	UNP P28037
C	387	ARG	-	EXPRESSION TAG	UNP P28037
C	388	GLY	-	EXPRESSION TAG	UNP P28037
C	389	SER	-	EXPRESSION TAG	UNP P28037
C	390	HIS	-	EXPRESSION TAG	UNP P28037
C	391	HIS	-	EXPRESSION TAG	UNP P28037
C	392	HIS	-	EXPRESSION TAG	UNP P28037
C	393	HIS	-	EXPRESSION TAG	UNP P28037
C	394	HIS	-	EXPRESSION TAG	UNP P28037
C	395	THR	-	EXPRESSION TAG	UNP P28037
C	396	THR	-	EXPRESSION TAG	UNP P28037
D	386	MET	-	EXPRESSION TAG	UNP P28037
D	387	ARG	-	EXPRESSION TAG	UNP P28037
D	388	GLY	-	EXPRESSION TAG	UNP P28037
D	389	SER	-	EXPRESSION TAG	UNP P28037
D	390	HIS	-	EXPRESSION TAG	UNP P28037
D	391	HIS	-	EXPRESSION TAG	UNP P28037
D	392	HIS	-	EXPRESSION TAG	UNP P28037
D	393	HIS	-	EXPRESSION TAG	UNP P28037
D	394	HIS	-	EXPRESSION TAG	UNP P28037
D	395	THR	-	EXPRESSION TAG	UNP P28037
D	396	THR	-	EXPRESSION TAG	UNP P28037

- Molecule 2 is SULFATE ION (three-letter code: SO<sub>4</sub>) (formula: O<sub>4</sub>S).



Mol	Chain	Residues	Atoms	ZeroOcc	AltConf
2	A	1	Total O S 5 4 1	0	0
2	A	1	Total O S 5 4 1	0	0
2	A	1	Total O S 5 4 1	0	0
2	A	1	Total O S 5 4 1	0	0
2	A	1	Total O S 5 4 1	0	0
2	A	1	Total O S 5 4 1	0	0
2	A	1	Total O S 5 4 1	0	0
2	B	1	Total O S 5 4 1	0	0
2	B	1	Total O S 5 4 1	0	0
2	B	1	Total O S 5 4 1	0	0
2	B	1	Total O S 5 4 1	0	0
2	B	1	Total O S 5 4 1	0	0
2	B	1	Total O S 5 4 1	0	0
2	B	1	Total O S 5 4 1	0	0
2	B	1	Total O S 5 4 1	0	0
2	B	1	Total O S 5 4 1	0	0
2	C	1	Total O S 5 4 1	0	0
2	C	1	Total O S 5 4 1	0	0
2	C	1	Total O S 5 4 1	0	0
2	C	1	Total O S 5 4 1	0	0
2	C	1	Total O S 5 4 1	0	0
2	C	1	Total O S 5 4 1	0	0
2	C	1	Total O S 5 4 1	0	0

Continued on next page...

Continued from previous page...

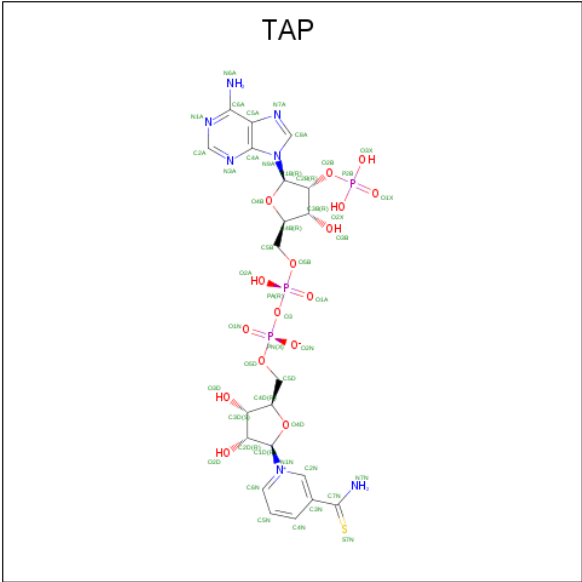
Mol	Chain	Residues	Atoms			ZeroOcc	AltConf
2	D	1	Total	O	S	0	0
			5	4	1		
2	D	1	Total	O	S	0	0
			5	4	1		
2	D	1	Total	O	S	0	0
			5	4	1		
2	D	1	Total	O	S	0	0
			5	4	1		
2	D	1	Total	O	S	0	0
			5	4	1		

- Molecule 3 is GLYCEROL (three-letter code: GOL) (formula:  $C_3H_8O_3$ ).



Mol	Chain	Residues	Atoms			ZeroOcc	AltConf
3	A	1	Total	C	O	0	0
			6	3	3		
3	B	1	Total	C	O	0	0
			6	3	3		
3	C	1	Total	C	O	0	0
			6	3	3		
3	D	1	Total	C	O	0	0
			6	3	3		

- Molecule 4 is 7-THIONICOTINAMIDE-ADENINE-DINUCLEOTIDE PHOSPHATE (three-letter code: TAP) (formula:  $C_{21}H_{28}N_7O_{16}P_3S$ ).



Mol	Chain	Residues	Atoms						ZeroOcc	AltConf
4	A	1	Total	C	N	O	P	S	0	1
			64	26	7	25	5	1		
4	B	1	Total	C	N	O	P	S	0	1
			64	26	7	25	5	1		
4	C	1	Total	C	N	O	P	S	0	1
			64	26	7	25	5	1		
4	D	1	Total	C	N	O	P	S	0	1
			64	26	7	25	5	1		

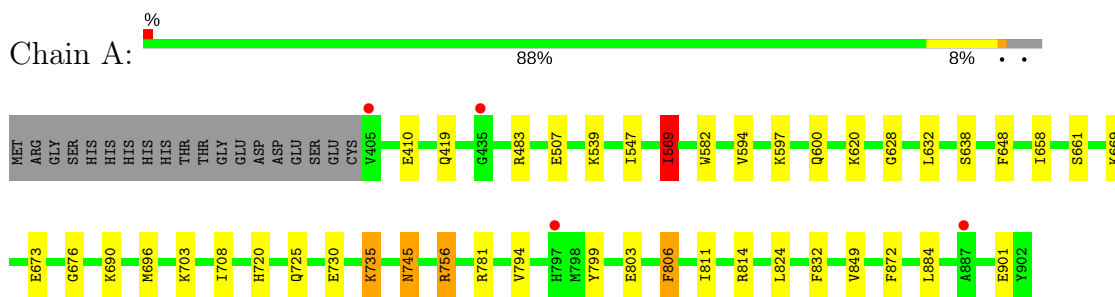
- Molecule 5 is water.

Mol	Chain	Residues	Atoms		ZeroOcc	AltConf
5	A	248	Total	O	0	0
			248	248		
5	B	247	Total	O	0	0
			247	247		
5	C	283	Total	O	0	0
			283	283		
5	D	245	Total	O	0	0
			245	245		

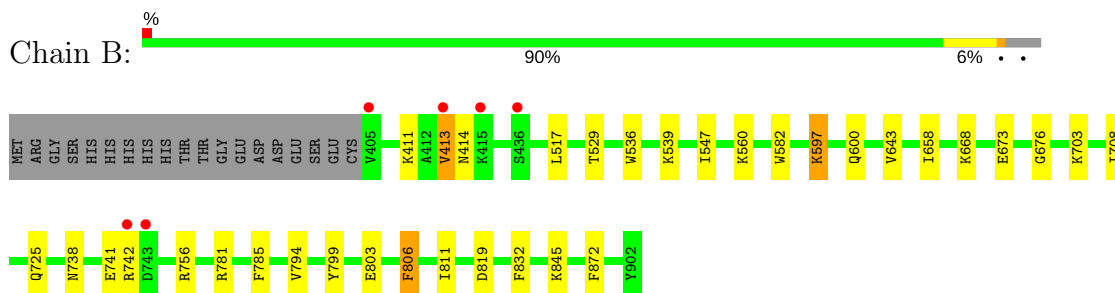
### 3 Residue-property plots

These plots are drawn for all protein, RNA and DNA chains in the entry. The first graphic for a chain summarises the proportions of the various outlier classes displayed in the second graphic. The second graphic shows the sequence view annotated by issues in geometry and electron density. Residues are color-coded according to the number of geometric quality criteria for which they contain at least one outlier: green = 0, yellow = 1, orange = 2 and red = 3 or more. A red dot above a residue indicates a poor fit to the electron density ( $RSRZ > 2$ ). Stretches of 2 or more consecutive residues without any outlier are shown as a green connector. Residues present in the sample, but not in the model, are shown in grey.

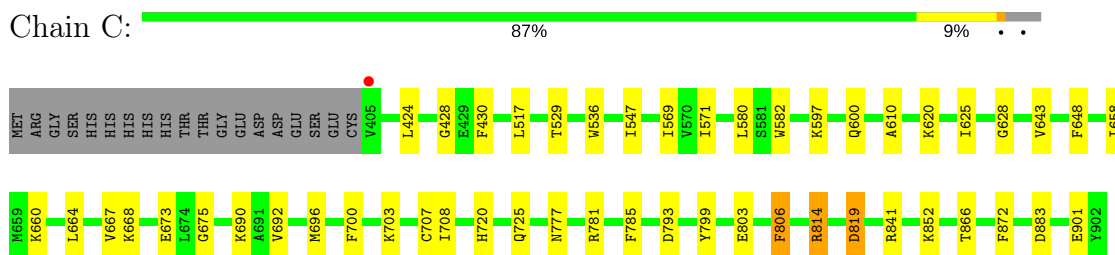
- Molecule 1: Cytosolic 10-formyltetrahydrofolate dehydrogenase



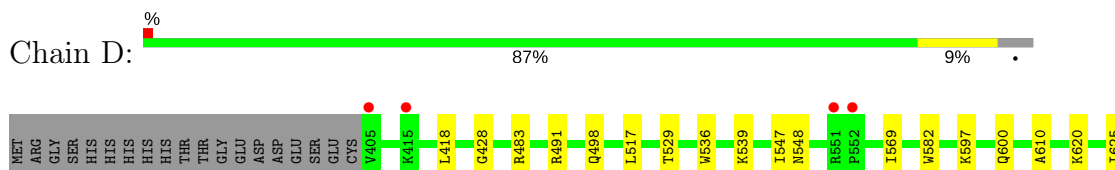
- Molecule 1: Cytosolic 10-formyltetrahydrofolate dehydrogenase



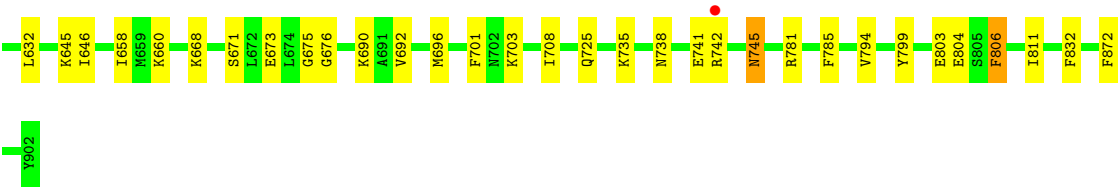
- Molecule 1: Cytosolic 10-formyltetrahydrofolate dehydrogenase



- Molecule 1: Cytosolic 10-formyltetrahydrofolate dehydrogenase







## 4 Data and refinement statistics

Property	Value	Source
Space group	C 1 2 1	Depositor
Cell constants a, b, c, $\alpha$ , $\beta$ , $\gamma$	258.94Å 194.39Å 97.11Å 90.00° 109.02° 90.00°	Depositor
Resolution (Å)	49.88 – 2.28 48.80 – 2.28	Depositor EDS
% Data completeness (in resolution range)	99.9 (49.88-2.28) 99.9 (48.80-2.28)	Depositor EDS
$R_{merge}$	0.10	Depositor
$R_{sym}$	(Not available)	Depositor
$\langle I/\sigma(I) \rangle$ <sup>1</sup>	2.89 (at 2.29Å)	Xtriage
Refinement program	REFMAC 5.5.0102	Depositor
R, $R_{free}$	0.177 , 0.196 0.176 , 0.196	Depositor DCC
$R_{free}$ test set	10330 reflections (5.03%)	wwPDB-VP
Wilson B-factor (Å <sup>2</sup> )	29.2	Xtriage
Anisotropy	0.161	Xtriage
Bulk solvent $k_{sol}$ (e/Å <sup>3</sup> ), $B_{sol}$ (Å <sup>2</sup> )	0.37 , 44.2	EDS
L-test for twinning <sup>2</sup>	$\langle  L  \rangle = 0.51$ , $\langle L^2 \rangle = 0.34$	Xtriage
Estimated twinning fraction	0.010 for -h-2*k,l	Xtriage
$F_o, F_c$ correlation	0.96	EDS
Total number of atoms	17137	wwPDB-VP
Average B, all atoms (Å <sup>2</sup> )	28.0	wwPDB-VP

Xtriage's analysis on translational NCS is as follows: *The largest off-origin peak in the Patterson function is 3.79% of the height of the origin peak. No significant pseudotranslation is detected.*

<sup>1</sup>Intensities estimated from amplitudes.

<sup>2</sup>Theoretical values of  $\langle |L| \rangle$ ,  $\langle L^2 \rangle$  for acentric reflections are 0.5, 0.333 respectively for untwinned datasets, and 0.375, 0.2 for perfectly twinned datasets.

## 5 Model quality [i](#)

### 5.1 Standard geometry [i](#)

Bond lengths and bond angles in the following residue types are not validated in this section: GOL, TAP, SO4

The Z score for a bond length (or angle) is the number of standard deviations the observed value is removed from the expected value. A bond length (or angle) with  $|Z| > 5$  is considered an outlier worth inspection. RMSZ is the root-mean-square of all Z scores of the bond lengths (or angles).

Mol	Chain	Bond lengths		Bond angles	
		RMSZ	$\# Z  > 5$	RMSZ	$\# Z  > 5$
1	A	0.71	4/4093 (0.1%)	0.76	5/5532 (0.1%)
1	B	0.69	4/4102 (0.1%)	0.65	4/5544 (0.1%)
1	C	0.62	0/4076	0.68	3/5509 (0.1%)
1	D	0.62	3/4083 (0.1%)	0.67	5/5519 (0.1%)
All	All	0.66	11/16354 (0.1%)	0.69	17/22104 (0.1%)

The worst 5 of 11 bond length outliers are listed below:

Mol	Chain	Res	Type	Atoms	Z	Observed(Å)	Ideal(Å)
1	B	725[A]	GLN	CG-CD	-16.23	1.13	1.51
1	B	725[B]	GLN	CG-CD	-16.23	1.13	1.51
1	A	756[A]	ARG	CD-NE	15.36	1.72	1.46
1	A	756[B]	ARG	CD-NE	15.36	1.72	1.46
1	A	725	GLN	CG-CD	-10.80	1.26	1.51

The worst 5 of 17 bond angle outliers are listed below:

Mol	Chain	Res	Type	Atoms	Z	Observed(°)	Ideal(°)
1	A	756[A]	ARG	CD-NE-CZ	17.79	148.50	123.60
1	A	756[B]	ARG	CD-NE-CZ	17.79	148.50	123.60
1	A	756[A]	ARG	CG-CD-NE	11.94	136.87	111.80
1	A	756[B]	ARG	CG-CD-NE	11.94	136.87	111.80
1	B	725[A]	GLN	CB-CG-CD	7.90	132.14	111.60

There are no chirality outliers.

There are no planarity outliers.

## 5.2 Too-close contacts ⓘ

In the following table, the Non-H and H(model) columns list the number of non-hydrogen atoms and hydrogen atoms in the chain respectively. The H(added) column lists the number of hydrogen atoms added and optimized by MolProbity. The Clashes column lists the number of clashes within the asymmetric unit, whereas Symm-Clashes lists symmetry related clashes.

Mol	Chain	Non-H	H(model)	H(added)	Clashes	Symm-Clashes
1	A	3930	0	3941	26	0
1	B	3928	0	3938	21	0
1	C	3914	0	3927	40	0
1	D	3922	0	3933	32	0
2	A	35	0	0	1	0
2	B	40	0	0	0	0
2	C	35	0	0	1	0
2	D	30	0	0	0	0
3	A	6	0	8	0	0
3	B	6	0	8	0	0
3	C	6	0	8	1	0
3	D	6	0	8	0	0
4	A	64	0	22	2	0
4	B	64	0	22	4	0
4	C	64	0	22	6	0
4	D	64	0	22	2	0
5	A	248	0	0	3	0
5	B	247	0	0	3	0
5	C	283	0	0	4	0
5	D	245	0	0	1	0
All	All	17137	0	15859	118	0

The all-atom clashscore is defined as the number of clashes found per 1000 atoms (including hydrogen atoms). The all-atom clashscore for this structure is 4.

The worst 5 of 118 close contacts within the same asymmetric unit are listed below, sorted by their clash magnitude.

Atom-1	Atom-2	Interatomic distance (Å)	Clash overlap (Å)
1:C:841[B]:ARG:HH11	1:C:841[B]:ARG:HG2	1.24	1.03
1:A:597:LYS:HE2	1:A:628:GLY:O	1.58	1.01
1:C:597:LYS:HE2	1:C:628:GLY:O	1.69	0.92
4:B:1010[B]:TAP:H6N	4:B:1010[B]:TAP:H52N	1.55	0.87
1:C:692:VAL:O	1:C:696:MET:HG3	1.75	0.85

There are no symmetry-related clashes.

## 5.3 Torsion angles

### 5.3.1 Protein backbone

In the following table, the Percentiles column shows the percent Ramachandran outliers of the chain as a percentile score with respect to all X-ray entries followed by that with respect to entries of similar resolution.

The Analysed column shows the number of residues for which the backbone conformation was analysed, and the total number of residues.

Mol	Chain	Analysed	Favoured	Allowed	Outliers	Percentiles	
1	A	518/517 (100%)	503 (97%)	15 (3%)	0	100	100
1	B	519/517 (100%)	501 (96%)	18 (4%)	0	100	100
1	C	516/517 (100%)	496 (96%)	20 (4%)	0	100	100
1	D	517/517 (100%)	500 (97%)	17 (3%)	0	100	100
All	All	2070/2068 (100%)	2000 (97%)	70 (3%)	0	100	100

There are no Ramachandran outliers to report.

### 5.3.2 Protein sidechains

In the following table, the Percentiles column shows the percent sidechain outliers of the chain as a percentile score with respect to all X-ray entries followed by that with respect to entries of similar resolution.

The Analysed column shows the number of residues for which the sidechain conformation was analysed, and the total number of residues.

Mol	Chain	Analysed	Rotameric	Outliers	Percentiles	
1	A	430/426 (101%)	418 (97%)	12 (3%)	47	61
1	B	431/426 (101%)	422 (98%)	9 (2%)	56	71
1	C	428/426 (100%)	417 (97%)	11 (3%)	49	64
1	D	429/426 (101%)	421 (98%)	8 (2%)	60	74
All	All	1718/1704 (101%)	1678 (98%)	40 (2%)	53	68

5 of 40 residues with a non-rotameric sidechain are listed below:

Mol	Chain	Res	Type
1	B	806	PHE
1	C	547	ILE
1	D	703	LYS

*Continued on next page...*

*Continued from previous page...*

Mol	Chain	Res	Type
1	B	845	LYS
1	C	569	ILE

Some sidechains can be flipped to improve hydrogen bonding and reduce clashes. 5 of 15 such sidechains are listed below:

Mol	Chain	Res	Type
1	C	600	GLN
1	C	706	ASN
1	D	600	GLN
1	B	706	ASN
1	D	548	ASN

### 5.3.3 RNA [i](#)

There are no RNA molecules in this entry.

## 5.4 Non-standard residues in protein, DNA, RNA chains [i](#)

There are no non-standard protein/DNA/RNA residues in this entry.

## 5.5 Carbohydrates [i](#)

There are no carbohydrates in this entry.

## 5.6 Ligand geometry [i](#)

40 ligands are modelled in this entry.

In the following table, the Counts columns list the number of bonds (or angles) for which Mogul statistics could be retrieved, the number of bonds (or angles) that are observed in the model and the number of bonds (or angles) that are defined in the Chemical Component Dictionary. The Link column lists molecule types, if any, to which the group is linked. The Z score for a bond length (or angle) is the number of standard deviations the observed value is removed from the expected value. A bond length (or angle) with  $|Z| > 2$  is considered an outlier worth inspection. RMSZ is the root-mean-square of all Z scores of the bond lengths (or angles).

Mol	Type	Chain	Res	Link	Bond lengths			Bond angles		
					Counts	RMSZ	$\# Z  > 2$	Counts	RMSZ	$\# Z  > 2$
2	SO4	A	3001	-	4,4,4	0.16	0	6,6,6	0.18	0
2	SO4	A	3002	-	4,4,4	0.14	0	6,6,6	0.41	0

Mol	Type	Chain	Res	Link	Bond lengths			Bond angles		
					Counts	RMSZ	# Z  > 2	Counts	RMSZ	# Z  > 2
2	SO4	A	3003	-	4,4,4	0.16	0	6,6,6	0.13	0
2	SO4	A	3004	-	4,4,4	0.21	0	6,6,6	0.15	0
2	SO4	A	3005	-	4,4,4	0.12	0	6,6,6	0.27	0
2	SO4	A	3006	-	4,4,4	0.18	0	6,6,6	0.13	0
2	SO4	A	3007	-	4,4,4	0.13	0	6,6,6	0.62	0
3	GOL	A	3008	-	5,5,5	0.35	0	5,5,5	0.35	0
4	TAP	A	3009[A]	-	37,42,52	1.03	3 (8%)	43,65,80	1.47	5 (11%)
4	TAP	A	3009[B]	-	44,52,52	1.38	4 (9%)	52,80,80	1.45	6 (11%)
2	SO4	B	1001	-	4,4,4	0.22	0	6,6,6	0.27	0
2	SO4	B	1002	-	4,4,4	0.16	0	6,6,6	0.19	0
2	SO4	B	1003	-	4,4,4	0.18	0	6,6,6	0.33	0
2	SO4	B	1004	-	4,4,4	0.18	0	6,6,6	0.11	0
2	SO4	B	1005	-	4,4,4	0.20	0	6,6,6	0.20	0
2	SO4	B	1006	-	4,4,4	0.20	0	6,6,6	0.23	0
2	SO4	B	1007	-	4,4,4	0.20	0	6,6,6	0.08	0
2	SO4	B	1008	-	4,4,4	0.25	0	6,6,6	0.39	0
3	GOL	B	1009	-	5,5,5	0.33	0	5,5,5	0.31	0
4	TAP	B	1010[A]	-	37,42,52	0.90	2 (5%)	43,65,80	1.49	5 (11%)
4	TAP	B	1010[B]	-	44,52,52	1.29	3 (6%)	52,80,80	1.44	7 (13%)
2	SO4	C	1001	-	4,4,4	0.22	0	6,6,6	0.11	0
2	SO4	C	1002	-	4,4,4	0.16	0	6,6,6	0.51	0
2	SO4	C	1003	-	4,4,4	0.16	0	6,6,6	0.17	0
2	SO4	C	1004	-	4,4,4	0.16	0	6,6,6	0.23	0
2	SO4	C	1005	-	4,4,4	0.19	0	6,6,6	0.35	0
2	SO4	C	1006	-	4,4,4	0.11	0	6,6,6	0.51	0
2	SO4	C	1007	-	4,4,4	0.25	0	6,6,6	0.39	0
3	GOL	C	1008	-	5,5,5	0.39	0	5,5,5	0.40	0
4	TAP	C	1009[A]	-	37,42,52	0.97	2 (5%)	43,65,80	1.45	2 (4%)
4	TAP	C	1009[B]	-	44,52,52	1.35	3 (6%)	52,80,80	1.47	5 (9%)
2	SO4	D	1001	-	4,4,4	0.20	0	6,6,6	0.41	0
2	SO4	D	1002	-	4,4,4	0.17	0	6,6,6	0.13	0
2	SO4	D	1003	-	4,4,4	0.24	0	6,6,6	0.32	0
2	SO4	D	1004	-	4,4,4	0.20	0	6,6,6	0.16	0
2	SO4	D	1005	-	4,4,4	0.18	0	6,6,6	0.25	0
2	SO4	D	1006	-	4,4,4	0.13	0	6,6,6	0.43	0
3	GOL	D	1007	-	5,5,5	0.32	0	5,5,5	0.28	0
4	TAP	D	1008[A]	-	37,42,52	0.92	2 (5%)	43,65,80	1.68	6 (13%)
4	TAP	D	1008[B]	-	44,52,52	1.33	3 (6%)	52,80,80	1.60	7 (13%)

In the following table, the Chirals column lists the number of chiral outliers, the number of chiral centers analysed, the number of these observed in the model and the number defined in the

Chemical Component Dictionary. Similar counts are reported in the Torsion and Rings columns.  
 '-' means no outliers of that kind were identified.

Mol	Type	Chain	Res	Link	Chirals	Torsions	Rings
2	SO4	A	3001	-	-	0/0/0/0	0/0/0/0
2	SO4	A	3002	-	-	0/0/0/0	0/0/0/0
2	SO4	A	3003	-	-	0/0/0/0	0/0/0/0
2	SO4	A	3004	-	-	0/0/0/0	0/0/0/0
2	SO4	A	3005	-	-	0/0/0/0	0/0/0/0
2	SO4	A	3006	-	-	0/0/0/0	0/0/0/0
2	SO4	A	3007	-	-	0/0/0/0	0/0/0/0
3	GOL	A	3008	-	-	0/4/4/4	0/0/0/0
4	TAP	A	3009[A]	-	-	0/23/56/67	0/4/4/5
4	TAP	A	3009[B]	-	-	0/27/67/67	0/5/5/5
2	SO4	B	1001	-	-	0/0/0/0	0/0/0/0
2	SO4	B	1002	-	-	0/0/0/0	0/0/0/0
2	SO4	B	1003	-	-	0/0/0/0	0/0/0/0
2	SO4	B	1004	-	-	0/0/0/0	0/0/0/0
2	SO4	B	1005	-	-	0/0/0/0	0/0/0/0
2	SO4	B	1006	-	-	0/0/0/0	0/0/0/0
2	SO4	B	1007	-	-	0/0/0/0	0/0/0/0
2	SO4	B	1008	-	-	0/0/0/0	0/0/0/0
3	GOL	B	1009	-	-	0/4/4/4	0/0/0/0
4	TAP	B	1010[A]	-	-	0/23/56/67	0/4/4/5
4	TAP	B	1010[B]	-	-	0/27/67/67	0/5/5/5
2	SO4	C	1001	-	-	0/0/0/0	0/0/0/0
2	SO4	C	1002	-	-	0/0/0/0	0/0/0/0
2	SO4	C	1003	-	-	0/0/0/0	0/0/0/0
2	SO4	C	1004	-	-	0/0/0/0	0/0/0/0
2	SO4	C	1005	-	-	0/0/0/0	0/0/0/0
2	SO4	C	1006	-	-	0/0/0/0	0/0/0/0
2	SO4	C	1007	-	-	0/0/0/0	0/0/0/0
3	GOL	C	1008	-	-	0/4/4/4	0/0/0/0
4	TAP	C	1009[A]	-	-	0/23/56/67	0/4/4/5
4	TAP	C	1009[B]	-	-	0/27/67/67	0/5/5/5
2	SO4	D	1001	-	-	0/0/0/0	0/0/0/0
2	SO4	D	1002	-	-	0/0/0/0	0/0/0/0
2	SO4	D	1003	-	-	0/0/0/0	0/0/0/0
2	SO4	D	1004	-	-	0/0/0/0	0/0/0/0
2	SO4	D	1005	-	-	0/0/0/0	0/0/0/0
2	SO4	D	1006	-	-	0/0/0/0	0/0/0/0
3	GOL	D	1007	-	-	0/4/4/4	0/0/0/0
4	TAP	D	1008[A]	-	-	0/23/56/67	0/4/4/5
4	TAP	D	1008[B]	-	-	0/27/67/67	0/5/5/5



The worst 5 of 22 bond length outliers are listed below:

Mol	Chain	Res	Type	Atoms	Z	Observed(Å)	Ideal(Å)
4	C	1009[B]	TAP	C7N-S7N	-6.22	1.56	1.67
4	D	1008[B]	TAP	C7N-S7N	-6.22	1.56	1.67
4	A	3009[B]	TAP	C7N-S7N	-6.06	1.56	1.67
4	B	1010[B]	TAP	C7N-S7N	-6.00	1.56	1.67
4	A	3009[A]	TAP	O4B-C1B	2.05	1.44	1.41

The worst 5 of 43 bond angle outliers are listed below:

Mol	Chain	Res	Type	Atoms	Z	Observed(°)	Ideal(°)
4	D	1008[A]	TAP	N3A-C2A-N1A	-7.26	122.65	128.86
4	D	1008[B]	TAP	N3A-C2A-N1A	-7.26	122.65	128.86
4	B	1010[A]	TAP	N3A-C2A-N1A	-6.39	123.39	128.86
4	B	1010[B]	TAP	N3A-C2A-N1A	-6.39	123.39	128.86
4	A	3009[A]	TAP	N3A-C2A-N1A	-5.89	123.82	128.86

There are no chirality outliers.

There are no torsion outliers.

There are no ring outliers.

10 monomers are involved in 17 short contacts:

Mol	Chain	Res	Type	Clashes	Symm-Clashes
2	A	3007	SO4	1	0
4	A	3009[A]	TAP	2	0
4	B	1010[A]	TAP	2	0
4	B	1010[B]	TAP	2	0
2	C	1001	SO4	1	0
3	C	1008	GOL	1	0
4	C	1009[A]	TAP	2	0
4	C	1009[B]	TAP	4	0
4	D	1008[A]	TAP	1	0
4	D	1008[B]	TAP	1	0

## 5.7 Other polymers ⓘ

There are no such residues in this entry.

## 5.8 Polymer linkage issues ⓘ

There are no chain breaks in this entry.

## 6 Fit of model and data [i](#)

### 6.1 Protein, DNA and RNA chains [i](#)

In the following table, the column labelled ‘#RSRZ > 2’ contains the number (and percentage) of RSRZ outliers, followed by percent RSRZ outliers for the chain as percentile scores relative to all X-ray entries and entries of similar resolution. The OWAB column contains the minimum, median, 95<sup>th</sup> percentile and maximum values of the occupancy-weighted average B-factor per residue. The column labelled ‘Q < 0.9’ lists the number of (and percentage) of residues with an average occupancy less than 0.9.

Mol	Chain	Analysed	<RSRZ>	#RSRZ>2	OWAB(Å <sup>2</sup> )	Q<0.9
1	A	498/517 (96%)	-0.26	4 (0%) 86 89	15, 27, 39, 46	20 (4%)
1	B	498/517 (96%)	-0.20	6 (1%) 79 82	16, 29, 39, 57	17 (3%)
1	C	498/517 (96%)	-0.41	1 (0%) 94 96	15, 24, 33, 48	18 (3%)
1	D	498/517 (96%)	-0.39	5 (1%) 82 85	15, 27, 37, 55	19 (3%)
All	All	1992/2068 (96%)	-0.31	16 (0%) 86 89	15, 27, 38, 57	74 (3%)

The worst 5 of 16 RSRZ outliers are listed below:

Mol	Chain	Res	Type	RSRZ
1	D	405	VAL	4.3
1	A	405	VAL	4.2
1	B	405	VAL	3.9
1	D	415	LYS	3.3
1	B	415	LYS	3.0

### 6.2 Non-standard residues in protein, DNA, RNA chains [i](#)

There are no non-standard protein/DNA/RNA residues in this entry.

### 6.3 Carbohydrates [i](#)

There are no carbohydrates in this entry.

### 6.4 Ligands [i](#)

In the following table, the Atoms column lists the number of modelled atoms in the group and the number defined in the chemical component dictionary. The B-factors column lists the minimum, median, 95<sup>th</sup> percentile and maximum values of B factors of atoms in the group. The column labelled ‘Q < 0.9’ lists the number of atoms with occupancy less than 0.9.

Mol	Type	Chain	Res	Atoms	RSCC	RSR	B-factors( $\text{\AA}^2$ )	Q<0.9
2	SO4	D	1003	5/5	0.73	0.25	48,48,50,50	5
2	SO4	A	3003	5/5	0.80	0.28	85,85,86,86	5
2	SO4	A	3005	5/5	0.81	0.30	45,47,47,47	5
3	GOL	D	1007	6/6	0.84	0.20	68,69,69,69	0
2	SO4	B	1006	5/5	0.85	0.23	45,47,48,48	5
2	SO4	A	3006	5/5	0.86	0.26	53,54,54,54	5
2	SO4	D	1002	5/5	0.86	0.27	86,86,87,87	5
3	GOL	C	1008	6/6	0.87	0.24	61,62,63,64	0
2	SO4	C	1004	5/5	0.87	0.23	52,52,52,52	5
2	SO4	B	1005	5/5	0.87	0.17	49,50,51,51	5
2	SO4	D	1004	5/5	0.88	0.23	41,43,43,44	5
2	SO4	D	1005	5/5	0.88	0.23	45,45,45,46	5
2	SO4	A	3004	5/5	0.89	0.14	52,53,53,54	5
3	GOL	A	3008	6/6	0.89	0.25	60,61,62,62	0
4	TAP	D	1008[B]	48/48	0.92	0.17	32,40,53,58	25
2	SO4	B	1007	5/5	0.92	0.18	44,44,46,46	5
4	TAP	B	1010[A]	39/48	0.92	0.18	41,45,51,51	16
4	TAP	D	1008[A]	39/48	0.92	0.17	32,39,47,48	16
4	TAP	A	3009[A]	39/48	0.92	0.18	35,41,51,51	16
2	SO4	C	1003	5/5	0.92	0.20	76,77,77,77	5
4	TAP	A	3009[B]	48/48	0.92	0.18	35,45,61,64	25
3	GOL	B	1009	6/6	0.92	0.20	58,60,61,61	0
4	TAP	B	1010[B]	48/48	0.92	0.18	41,47,63,65	25
4	TAP	C	1009[A]	39/48	0.93	0.17	33,37,40,41	16
4	TAP	C	1009[B]	48/48	0.93	0.17	33,40,53,57	25
2	SO4	A	3007	5/5	0.93	0.22	36,43,43,44	5
2	SO4	B	1004	5/5	0.93	0.22	96,96,97,97	0
2	SO4	B	1003	5/5	0.94	0.17	41,41,44,44	5
2	SO4	A	3002	5/5	0.94	0.13	34,36,38,39	5
2	SO4	C	1005	5/5	0.94	0.17	43,44,44,44	5
2	SO4	C	1001	5/5	0.95	0.13	38,39,40,41	5
2	SO4	D	1001	5/5	0.95	0.13	33,34,36,36	5
2	SO4	B	1008	5/5	0.95	0.24	35,40,42,42	5
2	SO4	C	1007	5/5	0.95	0.11	30,34,36,36	5
2	SO4	C	1002	5/5	0.95	0.13	38,38,40,40	5
2	SO4	D	1006	5/5	0.96	0.18	34,39,40,41	5
2	SO4	C	1006	5/5	0.97	0.17	39,41,42,42	5
2	SO4	B	1002	5/5	0.97	0.09	34,35,37,37	5
2	SO4	A	3001	5/5	0.98	0.14	37,38,39,39	5
2	SO4	B	1001	5/5	0.98	0.14	26,26,27,27	5

## 6.5 Other polymers [i](#)

There are no such residues in this entry.