



Full wwPDB X-ray Structure Validation Report ⓘ

Mar 10, 2018 – 12:28 am GMT

PDB ID : 3H0B
Title : Discovery of aminoheterocycles as a novel beta-secretase inhibitor class
Authors : Allison, T.J.
Deposited on : 2009-04-08
Resolution : 2.70 Å(reported)

This is a Full wwPDB X-ray Structure Validation Report for a publicly released PDB entry.

We welcome your comments at validation@mail.wwpdb.org

A user guide is available at

<https://www.wwpdb.org/validation/2017/XrayValidationReportHelp>

with specific help available everywhere you see the ⓘ symbol.

The following versions of software and data (see [references ⓘ](#)) were used in the production of this report:

MolProbity : 4.02b-467
Mogul : 1.7.3 (157068), CSD as539be (2018)
Xtriage (Phenix) : 1.13
EDS : trunk30967
Percentile statistics : 20171227.v01 (using entries in the PDB archive December 27th 2017)
Refmac : 5.8.0158
CCP4 : 7.0 (Gargrove)
Ideal geometry (proteins) : Engh & Huber (2001)
Ideal geometry (DNA, RNA) : Parkinson et al. (1996)
Validation Pipeline (wwPDB-VP) : trunk30967

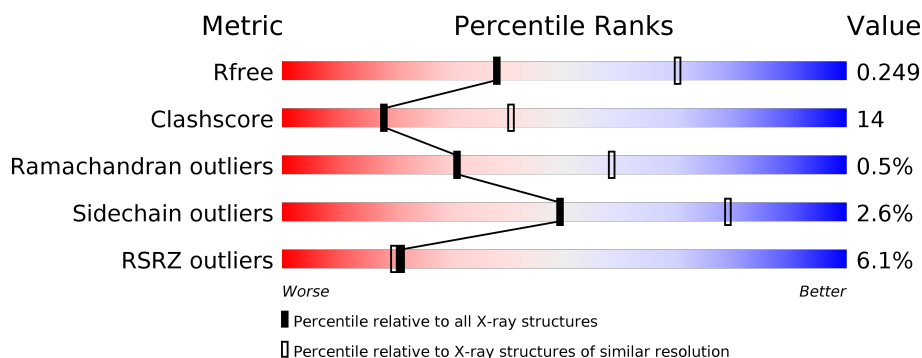
1 Overall quality at a glance

The following experimental techniques were used to determine the structure:

X-RAY DIFFRACTION

The reported resolution of this entry is 2.70 Å.

Percentile scores (ranging between 0-100) for global validation metrics of the entry are shown in the following graphic. The table shows the number of entries on which the scores are based.



Metric	Whole archive (#Entries)	Similar resolution (#Entries, resolution range(Å))
R_{free}	111664	2449 (2.70-2.70)
Clashscore	122126	2756 (2.70-2.70)
Ramachandran outliers	120053	2716 (2.70-2.70)
Sidechain outliers	120020	2716 (2.70-2.70)
RSRZ outliers	108989	2376 (2.70-2.70)

The table below summarises the geometric issues observed across the polymeric chains and their fit to the electron density. The red, orange, yellow and green segments on the lower bar indicate the fraction of residues that contain outliers for ≥ 3 , 2, 1 and 0 types of geometric quality criteria. A grey segment represents the fraction of residues that are not modelled. The numeric value for each fraction is indicated below the corresponding segment, with a dot representing fractions $\leq 5\%$. The upper red bar (where present) indicates the fraction of residues that have poor fit to the electron density. The numeric value is given above the bar.

Mol	Chain	Length	Quality of chain
1	A	405	<div> <div>2%</div> <div> <div></div> <div>72%</div> <div>20%</div> <div>• 8%</div> </div> </div>
1	B	405	<div> <div>%</div> <div> <div></div> <div>66%</div> <div>24%</div> <div>• 8%</div> </div> </div>
1	C	405	<div> <div>14%</div> <div> <div></div> <div>60%</div> <div>31%</div> <div>• 8%</div> </div> </div>

2 Entry composition [i](#)

There are 3 unique types of molecules in this entry. The entry contains 9057 atoms, of which 0 are hydrogens and 0 are deuteriums.

In the tables below, the ZeroOcc column contains the number of atoms modelled with zero occupancy, the AltConf column contains the number of residues with at least one atom in alternate conformation and the Trace column contains the number of residues modelled with at most 2 atoms.

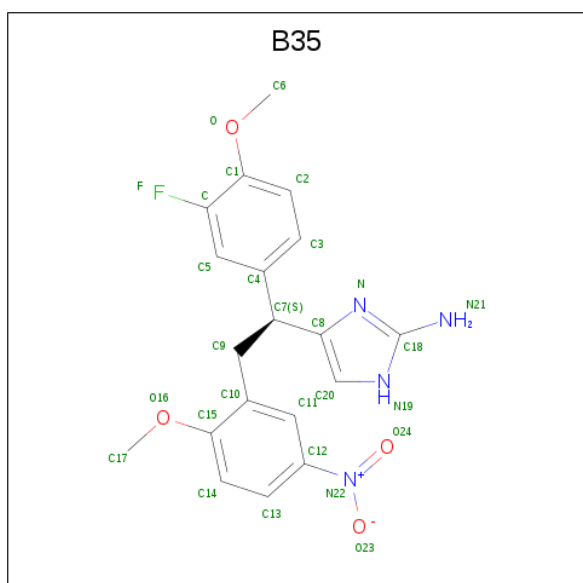
- Molecule 1 is a protein called Beta-secretase 1.

Mol	Chain	Residues	Atoms					ZeroOcc	AltConf	Trace
1	A	372	Total	C	N	O	S	0	0	0
			2931	1877	488	552	14			
1	B	373	Total	C	N	O	S	0	0	0
			2935	1879	489	553	14			
1	C	373	Total	C	N	O	S	0	0	0
			2935	1879	489	553	14			

There are 3 discrepancies between the modelled and reference sequences:

Chain	Residue	Modelled	Actual	Comment	Reference
A	429	MET	-	EXPRESSION TAG	UNP P56817
B	429	MET	-	EXPRESSION TAG	UNP P56817
C	429	MET	-	EXPRESSION TAG	UNP P56817

- Molecule 2 is 4-[(1S)-1-(3-fluoro-4-methoxyphenyl)-2-(2-methoxy-5-nitrophenyl)ethyl]-1H-imidazol-2-amine (three-letter code: B35) (formula: C₁₉H₁₉FN₄O₄).



Mol	Chain	Residues	Atoms					ZeroOcc	AltConf
2	A	1	Total	C	F	N	O	0	0
			28	19	1	4	4		
2	B	1	Total	C	F	N	O	0	0
			28	19	1	4	4		
2	C	1	Total	C	F	N	O	0	0
			28	19	1	4	4		

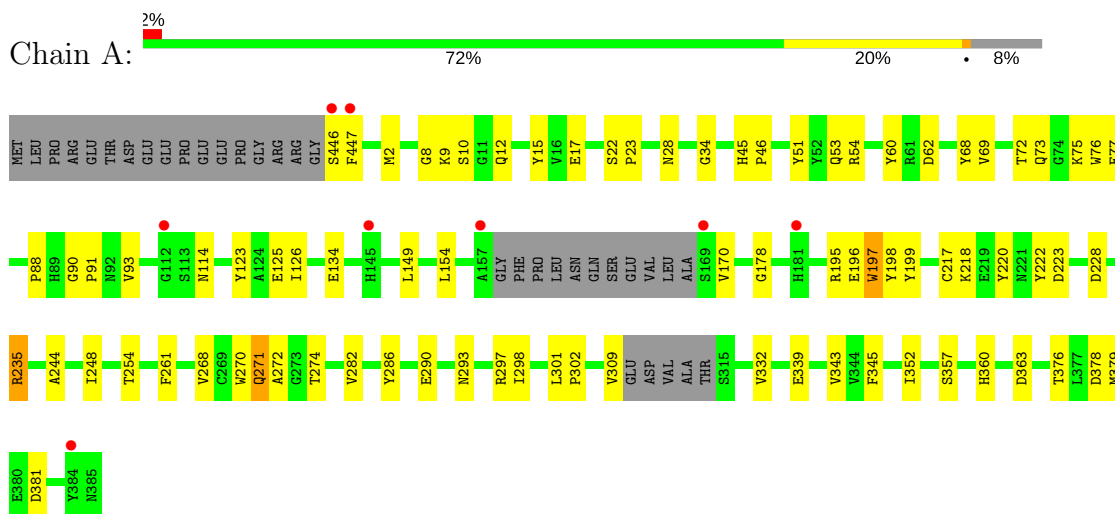
- Molecule 3 is water.

Mol	Chain	Residues	Atoms		ZeroOcc	AltConf
3	A	60	Total	O	0	0
			60	60		
3	B	77	Total	O	0	0
			77	77		
3	C	35	Total	O	0	0
			35	35		

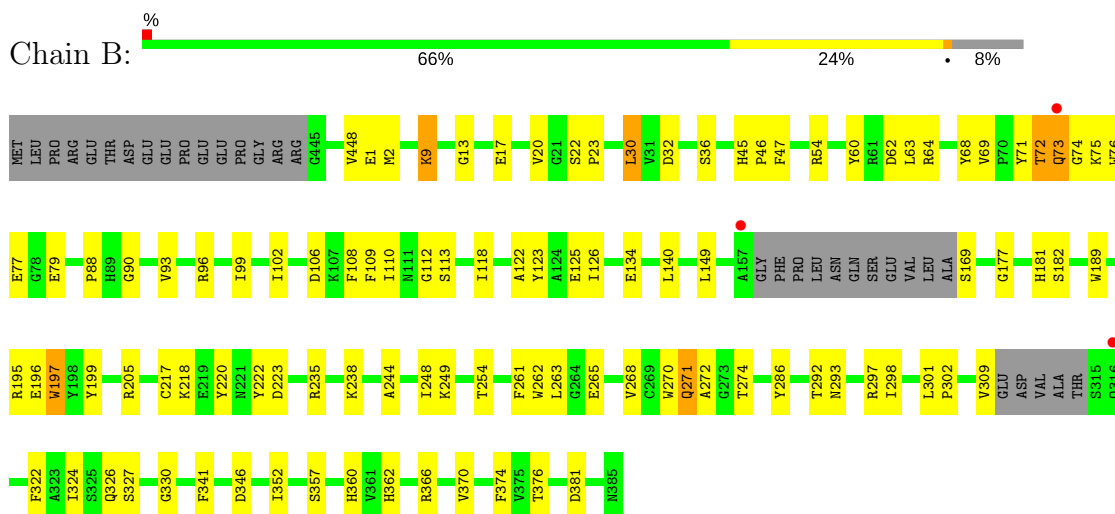
3 Residue-property plots

These plots are drawn for all protein, RNA and DNA chains in the entry. The first graphic for a chain summarises the proportions of the various outlier classes displayed in the second graphic. The second graphic shows the sequence view annotated by issues in geometry and electron density. Residues are color-coded according to the number of geometric quality criteria for which they contain at least one outlier: green = 0, yellow = 1, orange = 2 and red = 3 or more. A red dot above a residue indicates a poor fit to the electron density ($RSRZ > 2$). Stretches of 2 or more consecutive residues without any outlier are shown as a green connector. Residues present in the sample, but not in the model, are shown in grey.

• Molecule 1: Beta-secretase 1

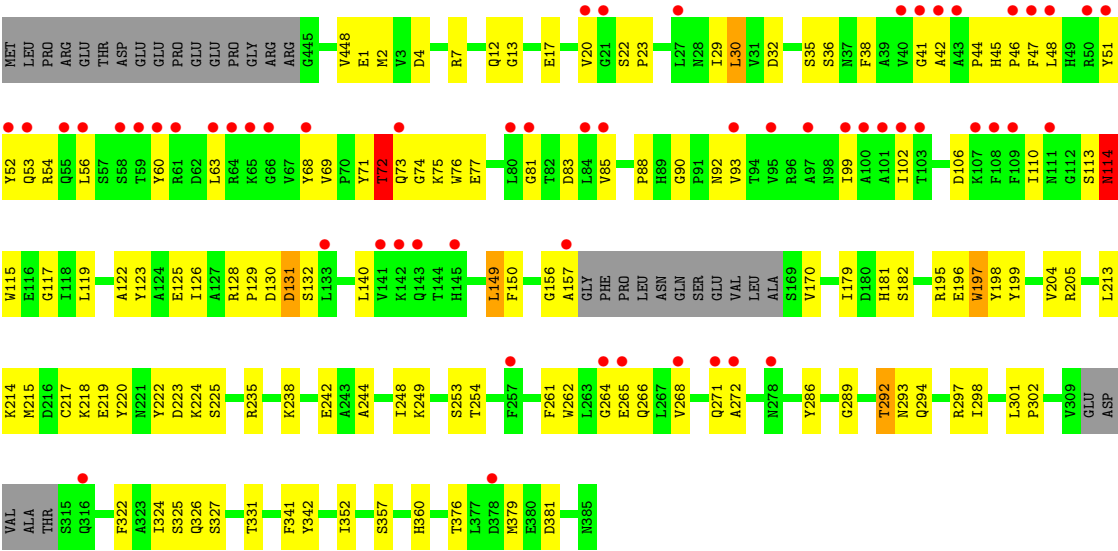


• Molecule 1: Beta-secretase 1



• Molecule 1: Beta-secretase 1





4 Data and refinement statistics

Property	Value	Source
Space group	C 1 2 1	Depositor
Cell constants a, b, c, α , β , γ	221.18Å 107.44Å 65.08Å 90.00° 99.47° 90.00°	Depositor
Resolution (Å)	47.25 – 2.70 47.25 – 2.70	Depositor EDS
% Data completeness (in resolution range)	99.8 (47.25-2.70) 99.8 (47.25-2.70)	Depositor EDS
R_{merge}	0.08	Depositor
R_{sym}	(Not available)	Depositor
$\langle I/\sigma(I) \rangle$ ¹	2.65 (at 2.69Å)	Xtriage
Refinement program	REFMAC	Depositor
R, R_{free}	0.220 , 0.251 0.219 , 0.249	Depositor DCC
R_{free} test set	2072 reflections (5.03%)	wwPDB-VP
Wilson B-factor (Å ²)	52.9	Xtriage
Anisotropy	0.121	Xtriage
Bulk solvent k_{sol} (e/Å ³), B_{sol} (Å ²)	0.34 , 41.4	EDS
L-test for twinning ²	$\langle L \rangle = 0.50$, $\langle L^2 \rangle = 0.33$	Xtriage
Estimated twinning fraction	No twinning to report.	Xtriage
F_o, F_c correlation	0.93	EDS
Total number of atoms	9057	wwPDB-VP
Average B, all atoms (Å ²)	53.0	wwPDB-VP

Xtriage's analysis on translational NCS is as follows: *The largest off-origin peak in the Patterson function is 4.27% of the height of the origin peak. No significant pseudotranslation is detected.*

¹Intensities estimated from amplitudes.

²Theoretical values of $\langle |L| \rangle$, $\langle L^2 \rangle$ for acentric reflections are 0.5, 0.333 respectively for untwinned datasets, and 0.375, 0.2 for perfectly twinned datasets.

5 Model quality

5.1 Standard geometry

Bond lengths and bond angles in the following residue types are not validated in this section: B35

The Z score for a bond length (or angle) is the number of standard deviations the observed value is removed from the expected value. A bond length (or angle) with $|Z| > 5$ is considered an outlier worth inspection. RMSZ is the root-mean-square of all Z scores of the bond lengths (or angles).

Mol	Chain	Bond lengths		Bond angles	
		RMSZ	# Z >5	RMSZ	# Z >5
1	A	0.28	0/3005	0.46	0/4080
1	B	0.29	0/3009	0.47	0/4085
1	C	0.28	0/3009	0.46	0/4085
All	All	0.28	0/9023	0.46	0/12250

There are no bond length outliers.

There are no bond angle outliers.

There are no chirality outliers.

There are no planarity outliers.

5.2 Too-close contacts

In the following table, the Non-H and H(model) columns list the number of non-hydrogen atoms and hydrogen atoms in the chain respectively. The H(added) column lists the number of hydrogen atoms added and optimized by MolProbity. The Clashes column lists the number of clashes within the asymmetric unit, whereas Symm-Clashes lists symmetry related clashes.

Mol	Chain	Non-H	H(model)	H(added)	Clashes	Symm-Clashes
1	A	2931	0	2843	61	0
1	B	2935	0	2846	87	0
1	C	2935	0	2846	116	0
2	A	28	0	19	0	0
2	B	28	0	19	1	0
2	C	28	0	19	4	0
3	A	60	0	0	2	0
3	B	77	0	0	6	0
3	C	35	0	0	6	0
All	All	9057	0	8592	253	0

The all-atom clashscore is defined as the number of clashes found per 1000 atoms (including hydrogen atoms). The all-atom clashscore for this structure is 14.

All (253) close contacts within the same asymmetric unit are listed below, sorted by their clash magnitude.

Atom-1	Atom-2	Interatomic distance (Å)	Clash overlap (Å)
1:C:238:LYS:HG3	1:C:326:GLN:OE1	1.41	1.20
1:B:96:ARG:HG2	1:C:448:VAL:HG23	1.37	1.03
1:B:72:THR:O	1:B:73:GLN:HB3	1.65	0.94
1:C:261:PHE:CD1	1:C:268:VAL:HG23	2.06	0.90
1:B:64:ARG:HD2	3:C:477:HOH:O	1.76	0.86
1:B:71:TYR:O	1:B:72:THR:HG22	1.79	0.82
1:A:290:GLU:HG3	3:A:506:HOH:O	1.79	0.81
1:B:149:LEU:HD12	1:B:346:ASP:HA	1.62	0.80
1:B:72:THR:O	1:B:73:GLN:CB	2.28	0.80
1:B:64:ARG:CD	3:C:477:HOH:O	2.30	0.80
1:B:96:ARG:HG2	1:C:448:VAL:CG2	2.12	0.80
1:C:2:MET:HG2	1:C:90:GLY:HA2	1.65	0.79
1:B:2:MET:HG2	1:B:90:GLY:HA2	1.64	0.79
1:C:261:PHE:CD1	1:C:268:VAL:CG2	2.66	0.79
1:C:115:TRP:HH2	2:C:449:B35:H17A	1.50	0.77
1:A:2:MET:HG2	1:A:90:GLY:HA2	1.65	0.76
1:B:125:GLU:OE2	1:B:195:ARG:NH2	2.19	0.76
1:C:149:LEU:C	1:C:149:LEU:HD23	2.06	0.75
1:A:125:GLU:OE2	1:A:195:ARG:NH2	2.20	0.74
1:C:45:HIS:ND1	1:C:46:PRO:HD2	2.02	0.74
1:B:238:LYS:HD3	1:B:326:GLN:OE1	1.87	0.74
1:A:68:TYR:HD1	1:A:77:GLU:HG2	1.54	0.73
1:C:72:THR:OG1	1:C:73:GLN:N	2.21	0.72
1:A:244:ALA:O	1:A:248:ILE:HG13	1.90	0.71
1:B:45:HIS:ND1	1:B:46:PRO:HD2	2.04	0.71
1:C:115:TRP:CH2	2:C:449:B35:H17A	2.26	0.71
1:C:130:ASP:OD2	1:C:132:SER:OG	2.09	0.70
1:C:69:VAL:HG21	1:C:76:TRP:CZ2	2.27	0.70
1:B:249:LYS:HE2	1:B:262:TRP:CD1	2.27	0.70
1:C:156:GLY:O	1:C:170:VAL:HG12	1.91	0.69
1:A:45:HIS:ND1	1:A:46:PRO:HD2	2.07	0.69
1:C:38:PHE:HE1	1:C:85:VAL:HG21	1.58	0.68
1:B:96:ARG:CG	1:C:448:VAL:HG23	2.20	0.68
1:B:169:SER:N	3:B:509:HOH:O	2.26	0.67
1:C:45:HIS:CE1	1:C:46:PRO:HD2	2.29	0.67
1:B:79:GLU:HB2	3:B:512:HOH:O	1.94	0.67
1:B:79:GLU:CB	3:B:512:HOH:O	2.46	0.64

Continued on next page...

Continued from previous page...

Atom-1	Atom-2	Interatomic distance (Å)	Clash overlap (Å)
1:C:125:GLU:OE2	1:C:195:ARG:NH2	2.30	0.63
1:C:2:MET:CG	1:C:90:GLY:HA2	2.27	0.63
1:B:261:PHE:CD1	1:B:268:VAL:HG23	2.34	0.62
1:C:376:THR:HG22	1:C:379:MET:HG3	1.80	0.62
1:C:249:LYS:HE3	1:C:262:TRP:CD1	2.34	0.62
1:A:301:LEU:HB3	1:A:302:PRO:HD2	1.81	0.62
1:B:309:VAL:O	1:B:309:VAL:HG12	1.98	0.62
1:C:68:TYR:HD1	1:C:77:GLU:HG2	1.64	0.62
1:C:32:ASP:OD1	2:C:449:B35:H3	1.99	0.62
1:B:298:ILE:HG22	1:B:370:VAL:HG22	1.82	0.62
1:B:69:VAL:HG21	1:B:76:TRP:CZ2	2.35	0.61
1:B:2:MET:CG	1:B:90:GLY:HA2	2.31	0.61
1:C:68:TYR:CD1	1:C:77:GLU:HG2	2.35	0.61
1:A:68:TYR:CE1	1:A:75:LYS:HD3	2.36	0.60
1:C:301:LEU:HB3	1:C:302:PRO:HD2	1.84	0.60
1:B:13:GLY:HA3	1:B:30:LEU:HD11	1.82	0.60
1:C:293:ASN:HA	1:C:376:THR:O	2.01	0.59
1:C:376:THR:HG22	1:C:379:MET:CG	2.32	0.59
1:C:156:GLY:O	1:C:157:ALA:HB2	2.02	0.58
1:C:63:LEU:HD12	1:C:81:GLY:N	2.19	0.58
1:A:2:MET:CG	1:A:90:GLY:HA2	2.34	0.58
1:C:205:ARG:HB3	1:C:286:TYR:HB2	1.85	0.58
1:A:261:PHE:CD1	1:A:268:VAL:HG23	2.40	0.57
1:C:52:TYR:OH	1:C:83:ASP:OD2	2.22	0.57
1:A:68:TYR:CD1	1:A:77:GLU:HG2	2.37	0.56
1:C:197:TRP:HD1	1:C:197:TRP:H	1.54	0.56
1:C:244:ALA:O	1:C:248:ILE:HG13	2.05	0.56
1:B:45:HIS:CE1	1:B:46:PRO:HD2	2.40	0.56
1:B:96:ARG:O	1:C:448:VAL:HG21	2.06	0.56
1:C:114:ASN:O	1:C:114:ASN:ND2	2.36	0.56
1:B:74:GLY:O	1:B:75:LYS:HB3	2.06	0.55
1:C:51:TYR:HE1	1:C:53:GLN:HG2	1.72	0.55
1:A:8:GLY:C	1:A:170:VAL:HG22	2.26	0.55
1:B:235:ARG:HB3	1:B:327:SER:HB2	1.88	0.55
1:B:298:ILE:HB	1:B:341:PHE:CZ	2.41	0.55
1:B:357:SER:HB3	1:B:360:HIS:HB3	1.89	0.55
1:A:123:TYR:CZ	1:A:196:GLU:HG2	2.42	0.55
1:C:261:PHE:HD1	1:C:268:VAL:HG23	1.67	0.54
1:B:293:ASN:HA	1:B:376:THR:O	2.06	0.54
1:A:8:GLY:O	1:A:170:VAL:HG22	2.06	0.54
1:C:45:HIS:ND1	1:C:46:PRO:CD	2.70	0.54

Continued on next page...

Continued from previous page...

Atom-1	Atom-2	Interatomic distance (Å)	Clash overlap (Å)
1:C:235:ARG:HG2	1:C:325:SER:OG	2.07	0.54
1:C:357:SER:HB3	1:C:360:HIS:HB3	1.88	0.54
1:C:131:ASP:C	1:C:131:ASP:OD1	2.46	0.54
1:C:63:LEU:HG	1:C:81:GLY:HA2	1.89	0.54
1:C:45:HIS:HE1	1:C:47:PHE:CD1	2.26	0.53
1:C:13:GLY:HA3	1:C:30:LEU:HD11	1.91	0.53
1:A:268:VAL:CG1	1:A:270:TRP:CH2	2.92	0.53
1:B:20:VAL:HG11	1:B:99:ILE:HD13	1.90	0.53
1:C:261:PHE:CD1	1:C:268:VAL:HG21	2.43	0.53
1:A:357:SER:HB3	1:A:360:HIS:HB3	1.91	0.52
1:A:69:VAL:HG21	1:A:76:TRP:CZ2	2.44	0.52
1:C:197:TRP:N	1:C:197:TRP:CD1	2.78	0.52
1:B:261:PHE:CD1	1:B:268:VAL:CG2	2.93	0.52
1:A:199:TYR:HB3	1:A:352:ILE:HD11	1.92	0.51
1:C:225:SER:N	3:C:479:HOH:O	2.11	0.51
1:C:68:TYR:CE1	1:C:75:LYS:CD	2.92	0.51
1:C:113:SER:O	1:C:114:ASN:CB	2.57	0.51
1:C:29:ILE:HG21	1:C:119:LEU:HB2	1.93	0.51
1:A:9:LYS:HD3	1:A:12:GLN:NE2	2.26	0.51
1:A:45:HIS:CE1	1:A:46:PRO:HD2	2.45	0.51
1:A:218:LYS:HG3	1:A:381:ASP:O	2.10	0.51
1:A:309:VAL:HG12	1:A:309:VAL:O	2.09	0.51
1:B:123:TYR:CZ	1:B:196:GLU:HG2	2.46	0.51
1:B:301:LEU:HB3	1:B:302:PRO:HD2	1.92	0.51
1:C:149:LEU:HD23	1:C:150:PHE:N	2.26	0.51
1:C:68:TYR:CE1	1:C:75:LYS:HD2	2.46	0.51
1:A:268:VAL:HG11	1:A:270:TRP:CH2	2.46	0.51
1:A:446:SER:O	1:A:447:PHE:HB2	2.11	0.51
1:B:62:ASP:O	1:C:182:SER:HA	2.10	0.50
1:C:42:ALA:O	1:C:51:TYR:CD1	2.64	0.50
1:A:9:LYS:HD3	1:A:12:GLN:CD	2.32	0.50
1:A:343:VAL:HG12	1:A:345:PHE:CE2	2.47	0.50
1:C:253:SER:HA	3:C:454:HOH:O	2.11	0.50
1:C:264:GLY:O	1:C:266:GLN:N	2.44	0.50
1:B:205:ARG:HB3	1:B:286:TYR:HB2	1.93	0.50
1:B:63:LEU:HD23	1:C:182:SER:HB3	1.94	0.50
1:C:235:ARG:HB3	1:C:327:SER:HB2	1.93	0.49
1:B:74:GLY:HA3	1:B:106:ASP:O	2.12	0.49
1:A:197:TRP:CD1	1:A:197:TRP:N	2.81	0.49
1:A:290:GLU:CG	3:A:506:HOH:O	2.48	0.49
1:A:293:ASN:HA	1:A:376:THR:O	2.12	0.49

Continued on next page...

Continued from previous page...

Atom-1	Atom-2	Interatomic distance (Å)	Clash overlap (Å)
1:B:64:ARG:HD3	3:C:477:HOH:O	2.05	0.49
1:C:74:GLY:HA3	1:C:106:ASP:O	2.13	0.49
1:B:76:TRP:CE3	1:B:102:ILE:HG12	2.48	0.48
1:A:15:TYR:CE2	1:A:114:ASN:HB2	2.48	0.48
1:B:96:ARG:NE	3:B:518:HOH:O	2.13	0.48
1:C:149:LEU:C	1:C:149:LEU:CD2	2.79	0.48
1:B:68:TYR:HD1	1:B:77:GLU:HG3	1.78	0.48
1:C:322:PHE:CZ	1:C:324:ILE:HB	2.49	0.48
1:B:199:TYR:HB3	1:B:352:ILE:HD11	1.96	0.48
1:C:20:VAL:HG11	1:C:99:ILE:HD13	1.96	0.48
1:A:68:TYR:CE1	1:A:75:LYS:CD	2.97	0.47
1:C:222:TYR:HA	1:C:223:ASP:HA	1.67	0.47
1:C:4:ASP:CG	1:C:7:ARG:HH22	2.17	0.47
1:A:9:LYS:O	1:A:10:SER:C	2.51	0.47
1:B:93:VAL:HG21	1:B:140:LEU:HD11	1.97	0.47
1:C:123:TYR:CZ	1:C:196:GLU:HG2	2.50	0.47
1:B:218:LYS:HG3	1:B:381:ASP:O	2.15	0.47
1:C:292:THR:O	1:C:293:ASN:HB2	2.14	0.47
1:C:36:SER:OG	1:C:122:ALA:HB3	2.14	0.47
1:A:222:TYR:HA	1:A:223:ASP:HA	1.66	0.47
1:B:32:ASP:OD1	2:B:449:B35:N	2.47	0.47
1:B:47:PHE:HD1	1:B:109:PHE:O	1.97	0.47
1:C:235:ARG:O	1:C:331:THR:HA	2.14	0.47
1:C:218:LYS:HG3	1:C:381:ASP:O	2.15	0.47
1:C:45:HIS:HB3	1:C:48:LEU:HG	1.97	0.47
1:A:235:ARG:HG3	1:A:332:VAL:HB	1.97	0.47
1:B:297:ARG:HG2	1:B:374:PHE:CE1	2.50	0.47
1:C:204:VAL:O	1:C:205:ARG:HB2	2.15	0.47
1:C:238:LYS:HE3	1:C:242:GLU:OE1	2.15	0.47
1:B:362:HIS:HB2	1:B:366:ARG:O	2.15	0.46
1:C:29:ILE:HD12	1:C:117:GLY:HA3	1.98	0.46
1:A:197:TRP:HD1	1:A:197:TRP:H	1.62	0.46
1:B:197:TRP:N	1:B:197:TRP:CD1	2.82	0.46
1:A:271:GLN:O	1:A:274:THR:HG23	2.16	0.46
1:C:298:ILE:HG13	1:C:298:ILE:O	2.15	0.46
1:A:447:PHE:CZ	1:A:178:GLY:HA3	2.51	0.46
1:B:36:SER:OG	1:B:122:ALA:HB3	2.15	0.46
1:A:268:VAL:HG12	1:A:270:TRP:CZ3	2.51	0.46
1:B:271:GLN:O	1:B:272:ALA:C	2.53	0.46
1:C:22:SER:HA	1:C:23:PRO:C	2.35	0.46
1:C:41:GLY:HA2	1:C:102:ILE:HB	1.98	0.46

Continued on next page...

Continued from previous page...

Atom-1	Atom-2	Interatomic distance (Å)	Clash overlap (Å)
1:B:268:VAL:HG11	1:B:270:TRP:CH2	2.51	0.46
1:C:110:ILE:HB	1:C:113:SER:HB3	1.97	0.46
1:C:199:TYR:HB3	1:C:352:ILE:HD11	1.99	0.45
1:A:62:ASP:O	1:B:182:SER:HA	2.17	0.45
1:A:17:GLU:O	1:A:88:PRO:HD2	2.16	0.45
1:B:96:ARG:O	1:C:448:VAL:CG2	2.64	0.45
1:C:286:TYR:CZ	1:C:297:ARG:HD3	2.52	0.45
1:B:217:CYS:HA	1:B:220:TYR:CD1	2.51	0.45
1:C:289:GLY:HA3	1:C:294:GLN:O	2.16	0.45
1:A:91:PRO:HB2	1:A:93:VAL:HG22	1.98	0.45
1:B:45:HIS:ND1	1:B:46:PRO:CD	2.76	0.45
1:C:213:LEU:HD12	1:C:213:LEU:HA	1.87	0.45
1:A:45:HIS:CG	1:A:46:PRO:HD2	2.51	0.45
1:A:268:VAL:HG12	1:A:270:TRP:CH2	2.52	0.44
1:C:12:GLN:OE1	1:C:113:SER:HA	2.17	0.44
1:C:93:VAL:HG21	1:C:140:LEU:HD11	1.99	0.44
1:C:122:ALA:CB	1:C:126:ILE:HD11	2.47	0.44
1:C:215:MET:HE2	1:C:219:GLU:CB	2.47	0.44
1:B:72:THR:HG23	1:B:72:THR:O	2.17	0.44
1:B:244:ALA:O	1:B:248:ILE:HG13	2.17	0.44
1:A:261:PHE:CD1	1:A:268:VAL:CG2	3.00	0.44
1:B:268:VAL:CG1	1:B:270:TRP:CH2	3.01	0.44
1:B:9:LYS:NZ	1:B:112:GLY:O	2.48	0.43
1:C:179:ILE:HG23	1:C:342:TYR:HE2	1.82	0.43
1:B:122:ALA:CB	1:B:126:ILE:HD11	2.49	0.43
1:B:45:HIS:CG	1:B:46:PRO:HD2	2.53	0.43
1:C:68:TYR:OH	1:C:75:LYS:HD3	2.18	0.43
1:A:72:THR:OG1	1:A:73:GLN:N	2.51	0.43
1:C:156:GLY:O	1:C:157:ALA:CB	2.67	0.43
1:C:264:GLY:C	1:C:266:GLN:H	2.22	0.43
1:B:169:SER:CA	3:B:509:HOH:O	2.65	0.43
1:B:197:TRP:HD1	1:B:197:TRP:H	1.66	0.43
1:C:17:GLU:O	1:C:88:PRO:HD2	2.18	0.43
1:A:54:ARG:HD2	1:A:60:TYR:CZ	2.54	0.43
1:B:125:GLU:CD	1:B:195:ARG:HH21	2.20	0.43
1:C:217:CYS:HA	1:C:220:TYR:CD1	2.54	0.43
1:C:298:ILE:HB	1:C:341:PHE:CZ	2.54	0.43
1:C:74:GLY:O	1:C:75:LYS:HB3	2.19	0.43
1:B:271:GLN:O	1:B:274:THR:HG23	2.18	0.43
1:B:68:TYR:CE1	1:B:75:LYS:HD2	2.54	0.43
1:B:96:ARG:C	1:C:448:VAL:HG21	2.40	0.43

Continued on next page...

Continued from previous page...

Atom-1	Atom-2	Interatomic distance (Å)	Clash overlap (Å)
1:C:71:TYR:O	1:C:73:GLN:N	2.52	0.42
1:B:22:SER:HA	1:B:23:PRO:C	2.39	0.42
1:C:126:ILE:HG23	1:C:197:TRP:HB2	2.00	0.42
1:A:197:TRP:CG	1:A:198:TYR:N	2.87	0.42
1:A:286:TYR:CZ	1:A:297:ARG:HD3	2.55	0.42
1:B:238:LYS:HD3	1:B:326:GLN:CD	2.40	0.42
1:B:222:TYR:HA	1:B:223:ASP:HA	1.67	0.42
1:B:322:PHE:CZ	1:B:324:ILE:HB	2.54	0.42
1:C:4:ASP:OD2	1:C:7:ARG:NH2	2.53	0.42
1:C:214:LYS:HE3	1:C:214:LYS:HB2	1.81	0.42
1:A:271:GLN:O	1:A:272:ALA:C	2.57	0.42
1:C:45:HIS:CE1	1:C:47:PHE:CD1	3.08	0.42
1:A:154:LEU:O	1:A:339:GLU:HA	2.20	0.42
1:A:282:VAL:HG12	1:A:301:LEU:HD23	2.00	0.42
1:A:51:TYR:HE1	1:A:53:GLN:HG2	1.85	0.42
1:A:126:ILE:HG23	1:A:197:TRP:HB2	2.02	0.41
1:A:217:CYS:HA	1:A:220:TYR:CD1	2.54	0.41
1:A:22:SER:HA	1:A:23:PRO:C	2.40	0.41
1:C:225:SER:OG	1:C:331:THR:HB	2.20	0.41
1:B:149:LEU:O	1:B:177:GLY:N	2.48	0.41
1:C:20:VAL:HG13	1:C:85:VAL:HG22	2.02	0.41
1:A:378:ASP:HB3	1:A:381:ASP:OD2	2.20	0.41
1:C:35:SER:CB	2:C:449:B35:H2	2.50	0.41
1:C:53:GLN:OE1	1:C:56:LEU:HD12	2.20	0.41
1:B:13:GLY:HA3	1:B:30:LEU:CD1	2.50	0.41
1:A:298:ILE:HG13	1:A:298:ILE:O	2.20	0.41
1:A:134:GLU:OE2	1:B:1:GLU:OE1	2.37	0.41
1:B:189:TRP:CD1	1:B:370:VAL:HG12	2.54	0.41
1:B:134:GLU:OE2	1:C:1:GLU:OE1	2.39	0.41
1:B:238:LYS:HA	1:B:238:LYS:HD2	1.74	0.41
1:C:45:HIS:CG	1:C:46:PRO:HD2	2.56	0.41
1:A:376:THR:HG22	1:A:379:MET:HG2	2.02	0.41
1:C:76:TRP:CE3	1:C:102:ILE:HG12	2.55	0.41
1:C:128:ARG:HA	1:C:129:PRO:C	2.42	0.41
1:C:29:ILE:CG2	1:C:119:LEU:HB2	2.50	0.41
1:A:34:GLY:HA3	1:A:228:ASP:OD1	2.20	0.41
1:C:376:THR:CG2	1:C:379:MET:CG	2.99	0.41
1:C:54:ARG:HD2	1:C:60:TYR:CZ	2.56	0.41
1:A:15:TYR:CD1	1:A:28:ASN:HB3	2.55	0.41
1:B:110:ILE:HB	1:B:113:SER:HB2	2.01	0.41
1:C:197:TRP:CG	1:C:198:TYR:N	2.88	0.41

Continued on next page...

Continued from previous page...

Atom-1	Atom-2	Interatomic distance (Å)	Clash overlap (Å)
1:B:108:PHE:HZ	1:B:118:ILE:CD1	2.35	0.40
1:B:330:GLY:N	3:B:513:HOH:O	2.35	0.40
1:B:68:TYR:CE1	1:B:75:LYS:CD	3.05	0.40
1:C:45:HIS:CG	1:C:46:PRO:CD	3.04	0.40
1:B:54:ARG:HD2	1:B:60:TYR:CZ	2.57	0.40
1:B:72:THR:O	1:B:73:GLN:CG	2.68	0.40
1:C:271:GLN:O	1:C:272:ALA:C	2.60	0.40
1:C:224:LYS:HA	3:C:479:HOH:O	2.21	0.40
1:B:17:GLU:O	1:B:88:PRO:HD2	2.21	0.40
1:B:263:LEU:HB2	1:B:265:GLU:HG3	2.02	0.40
1:C:235:ARG:HA	1:C:325:SER:O	2.21	0.40

There are no symmetry-related clashes.

5.3 Torsion angles [i](#)

5.3.1 Protein backbone [i](#)

In the following table, the Percentiles column shows the percent Ramachandran outliers of the chain as a percentile score with respect to all X-ray entries followed by that with respect to entries of similar resolution.

The Analysed column shows the number of residues for which the backbone conformation was analysed, and the total number of residues.

Mol	Chain	Analysed	Favoured	Allowed	Outliers	Percentiles	
1	A	366/405 (90%)	350 (96%)	16 (4%)	0	100	100
1	B	367/405 (91%)	348 (95%)	18 (5%)	1 (0%)	43	71
1	C	367/405 (91%)	341 (93%)	22 (6%)	4 (1%)	16	38
All	All	1100/1215 (90%)	1039 (94%)	56 (5%)	5 (0%)	31	58

All (5) Ramachandran outliers are listed below:

Mol	Chain	Res	Type
1	B	73	GLN
1	C	72	THR
1	C	265	GLU
1	C	114	ASN
1	C	44	PRO

5.3.2 Protein sidechains ⓘ

In the following table, the Percentiles column shows the percent sidechain outliers of the chain as a percentile score with respect to all X-ray entries followed by that with respect to entries of similar resolution.

The Analysed column shows the number of residues for which the sidechain conformation was analysed, and the total number of residues.

Mol	Chain	Analysed	Rotameric	Outliers	Percentiles	
1	A	318/346 (92%)	312 (98%)	6 (2%)	60	85
1	B	318/346 (92%)	309 (97%)	9 (3%)	47	77
1	C	318/346 (92%)	308 (97%)	10 (3%)	43	73
All	All	954/1038 (92%)	929 (97%)	25 (3%)	49	79

All (25) residues with a non-rotameric sidechain are listed below:

Mol	Chain	Res	Type
1	A	149	LEU
1	A	197	TRP
1	A	235	ARG
1	A	254	THR
1	A	271	GLN
1	A	363	ASP
1	B	448	VAL
1	B	9	LYS
1	B	30	LEU
1	B	72	THR
1	B	181	HIS
1	B	197	TRP
1	B	254	THR
1	B	271	GLN
1	B	292	THR
1	C	30	LEU
1	C	72	THR
1	C	92	ASN
1	C	114	ASN
1	C	131	ASP
1	C	149	LEU
1	C	181	HIS
1	C	197	TRP
1	C	254	THR
1	C	292	THR

Some sidechains can be flipped to improve hydrogen bonding and reduce clashes. All (3) such sidechains are listed below:

Mol	Chain	Res	Type
1	A	211	GLN
1	B	278	ASN
1	C	73	GLN

5.3.3 RNA [i](#)

There are no RNA molecules in this entry.

5.4 Non-standard residues in protein, DNA, RNA chains [i](#)

There are no non-standard protein/DNA/RNA residues in this entry.

5.5 Carbohydrates [i](#)

There are no carbohydrates in this entry.

5.6 Ligand geometry [i](#)

3 ligands are modelled in this entry.

In the following table, the Counts columns list the number of bonds (or angles) for which Mogul statistics could be retrieved, the number of bonds (or angles) that are observed in the model and the number of bonds (or angles) that are defined in the Chemical Component Dictionary. The Link column lists molecule types, if any, to which the group is linked. The Z score for a bond length (or angle) is the number of standard deviations the observed value is removed from the expected value. A bond length (or angle) with $|Z| > 2$ is considered an outlier worth inspection. RMSZ is the root-mean-square of all Z scores of the bond lengths (or angles).

Mol	Type	Chain	Res	Link	Bond lengths			Bond angles		
					Counts	RMSZ	$\# Z > 2$	Counts	RMSZ	$\# Z > 2$
2	B35	A	449	-	26,30,30	2.31	4 (15%)	30,42,42	0.85	2 (6%)
2	B35	B	449	-	26,30,30	2.26	4 (15%)	30,42,42	0.85	2 (6%)
2	B35	C	449	-	26,30,30	2.30	4 (15%)	30,42,42	0.86	2 (6%)

In the following table, the Chirals column lists the number of chiral outliers, the number of chiral centers analysed, the number of these observed in the model and the number defined in the Chemical Component Dictionary. Similar counts are reported in the Torsion and Rings columns. '–' means no outliers of that kind were identified.

Mol	Type	Chain	Res	Link	Chirals	Torsions	Rings
2	B35	A	449	-	-	0/15/20/20	0/3/3/3
2	B35	B	449	-	-	0/15/20/20	0/3/3/3
2	B35	C	449	-	-	0/15/20/20	0/3/3/3

All (12) bond length outliers are listed below:

Mol	Chain	Res	Type	Atoms	Z	Observed(Å)	Ideal(Å)
2	A	449	B35	C12-N22	-5.88	1.34	1.45
2	C	449	B35	C12-N22	-5.79	1.34	1.45
2	B	449	B35	C12-N22	-5.36	1.35	1.45
2	A	449	B35	O16-C15	-2.43	1.33	1.37
2	C	449	B35	O16-C15	-2.33	1.33	1.37
2	A	449	B35	O-C1	-2.32	1.33	1.37
2	C	449	B35	O-C1	-2.21	1.33	1.37
2	B	449	B35	O-C1	-2.14	1.33	1.37
2	B	449	B35	O16-C15	-2.06	1.33	1.37
2	A	449	B35	O24-N22	9.28	1.39	1.22
2	B	449	B35	O24-N22	9.33	1.39	1.22
2	C	449	B35	O24-N22	9.34	1.39	1.22

All (6) bond angle outliers are listed below:

Mol	Chain	Res	Type	Atoms	Z	Observed(°)	Ideal(°)
2	A	449	B35	C20-C8-C7	2.01	133.12	128.73
2	B	449	B35	C20-C8-C7	2.02	133.14	128.73
2	C	449	B35	C20-C8-C7	2.08	133.28	128.73
2	B	449	B35	C20-N19-C18	2.09	108.99	105.18
2	C	449	B35	C20-N19-C18	2.13	109.06	105.18
2	A	449	B35	C20-N19-C18	2.31	109.39	105.18

There are no chirality outliers.

There are no torsion outliers.

There are no ring outliers.

2 monomers are involved in 5 short contacts:

Mol	Chain	Res	Type	Clashes	Symm-Clashes
2	B	449	B35	1	0
2	C	449	B35	4	0

5.7 Other polymers [i](#)

There are no such residues in this entry.

5.8 Polymer linkage issues [i](#)

There are no chain breaks in this entry.

6 Fit of model and data

6.1 Protein, DNA and RNA chains

In the following table, the column labelled ‘#RSRZ > 2’ contains the number (and percentage) of RSRZ outliers, followed by percent RSRZ outliers for the chain as percentile scores relative to all X-ray entries and entries of similar resolution. The OWAB column contains the minimum, median, 95th percentile and maximum values of the occupancy-weighted average B-factor per residue. The column labelled ‘Q < 0.9’ lists the number of (and percentage) of residues with an average occupancy less than 0.9.

Mol	Chain	Analysed	<RSRZ>	#RSRZ>2	OWAB(Å ²)	Q<0.9
1	A	372/405 (91%)	0.07	8 (2%) 62 62	36, 51, 72, 92	0
1	B	373/405 (92%)	0.16	3 (0%) 86 87	36, 51, 72, 92	0
1	C	373/405 (92%)	0.55	57 (15%) 2 1	36, 52, 72, 92	0
All	All	1118/1215 (92%)	0.26	68 (6%) 21 20	36, 52, 72, 92	0

All (68) RSRZ outliers are listed below:

Mol	Chain	Res	Type	RSRZ
1	C	63	LEU	4.9
1	C	64	ARG	4.1
1	C	52	TYR	4.1
1	C	84	LEU	4.0
1	C	101	ALA	3.9
1	C	40	VAL	3.8
1	A	157	ALA	3.7
1	C	41	GLY	3.6
1	C	95	VAL	3.6
1	C	68	TYR	3.5
1	C	102	ILE	3.4
1	C	58	SER	3.3
1	C	316	GLN	3.3
1	C	42	ALA	3.3
1	C	43	ALA	3.2
1	C	51	TYR	3.2
1	C	265	GLU	3.1
1	C	46	PRO	3.1
1	A	384	TYR	3.1
1	B	316	GLN	3.0
1	C	56	LEU	3.0
1	A	446	SER	3.0
1	C	85	VAL	3.0

Continued on next page...

Continued from previous page...

Mol	Chain	Res	Type	RSRZ
1	C	53	GLN	2.9
1	C	99	ILE	2.9
1	C	55	GLN	2.9
1	C	27	LEU	2.9
1	C	20	VAL	2.9
1	C	50	ARG	2.9
1	C	107	LYS	2.9
1	C	100	ALA	2.9
1	A	145	HIS	2.8
1	C	268	VAL	2.8
1	C	47	PHE	2.8
1	C	65	LYS	2.7
1	C	81	GLY	2.7
1	A	181	HIS	2.7
1	C	142	LYS	2.7
1	C	378	ASP	2.6
1	C	143	GLN	2.6
1	C	271	GLN	2.5
1	C	145	HIS	2.5
1	C	133	LEU	2.5
1	C	66	GLY	2.5
1	C	157	ALA	2.4
1	C	141	VAL	2.4
1	C	109	PHE	2.4
1	C	21	GLY	2.4
1	A	447	PHE	2.4
1	C	278	ASN	2.3
1	C	97	ALA	2.3
1	C	48	LEU	2.3
1	C	111	ASN	2.3
1	B	73	GLN	2.2
1	C	257	PHE	2.2
1	C	59	THR	2.2
1	C	103	THR	2.2
1	C	61	ARG	2.2
1	C	108	PHE	2.2
1	A	169	SER	2.1
1	C	264	GLY	2.1
1	C	73	GLN	2.1
1	C	80	LEU	2.1
1	B	157	ALA	2.1
1	C	60	TYR	2.0

Continued on next page...

Continued from previous page...

Mol	Chain	Res	Type	RSRZ
1	C	272	ALA	2.0
1	A	112	GLY	2.0
1	C	93	VAL	2.0

6.2 Non-standard residues in protein, DNA, RNA chains [i](#)

There are no non-standard protein/DNA/RNA residues in this entry.

6.3 Carbohydrates [i](#)

There are no carbohydrates in this entry.

6.4 Ligands [i](#)

In the following table, the Atoms column lists the number of modelled atoms in the group and the number defined in the chemical component dictionary. The B-factors column lists the minimum, median, 95th percentile and maximum values of B factors of atoms in the group. The column labelled 'Q< 0.9' lists the number of atoms with occupancy less than 0.9.

Mol	Type	Chain	Res	Atoms	RSCC	RSR	B-factors(Å ²)	Q<0.9
2	B35	C	449	28/28	0.92	0.19	71,73,74,74	0
2	B35	A	449	28/28	0.94	0.17	37,39,44,44	0
2	B35	B	449	28/28	0.96	0.15	41,42,45,45	0

6.5 Other polymers [i](#)

There are no such residues in this entry.