



Full wwPDB X-ray Structure Validation Report ⓘ

Mar 10, 2018 – 09:00 pm GMT

PDB ID : 5H0G
Title : Crystal structure of HCK complexed with a pyrrolo-pyrimidine inhibitor (S)-2-(((1r,4S)-4-(4-amino-5-(4-phenoxyphenyl)-7H-pyrrolo[2,3-d]pyrimidin-7-yl)cyclohexyl)amino)-N,4-dimethylpentanamide
Authors : Tomabechi, Y.; Kukimoto-Niino, M.; Shirouzu, M.
Deposited on : 2016-10-04
Resolution : 1.80 Å(reported)

This is a Full wwPDB X-ray Structure Validation Report for a publicly released PDB entry.

We welcome your comments at validation@mail.wwpdb.org

A user guide is available at

<https://www.wwpdb.org/validation/2017/XrayValidationReportHelp>

with specific help available everywhere you see the ⓘ symbol.

The following versions of software and data (see [references ⓘ](#)) were used in the production of this report:

MolProbity : 4.02b-467
Mogul : 1.7.3 (157068), CSD as539be (2018)
Xtriage (Phenix) : 1.13
EDS : trunk30967
Percentile statistics : 20171227.v01 (using entries in the PDB archive December 27th 2017)
Refmac : 5.8.0158
CCP4 : 7.0 (Gargrove)
Ideal geometry (proteins) : Engh & Huber (2001)
Ideal geometry (DNA, RNA) : Parkinson et al. (1996)
Validation Pipeline (wwPDB-VP) : trunk30967

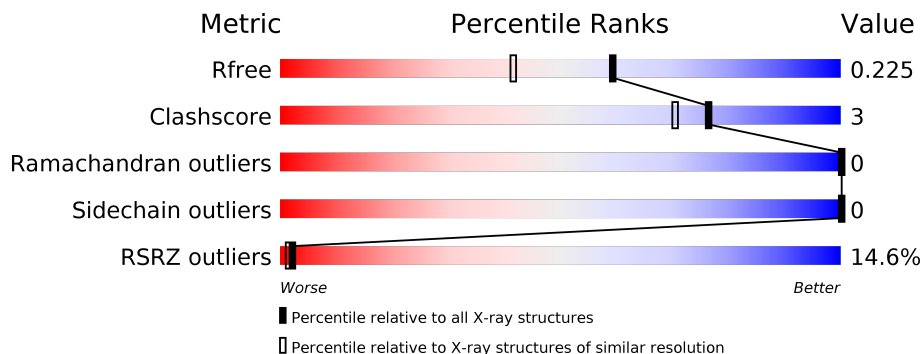
1 Overall quality at a glance

The following experimental techniques were used to determine the structure:

X-RAY DIFFRACTION

The reported resolution of this entry is 1.80 Å.

Percentile scores (ranging between 0-100) for global validation metrics of the entry are shown in the following graphic. The table shows the number of entries on which the scores are based.



Metric	Whole archive (#Entries)	Similar resolution (#Entries, resolution range(Å))
R_{free}	111664	5253 (1.80-1.80)
Clashscore	122126	6077 (1.80-1.80)
Ramachandran outliers	120053	6011 (1.80-1.80)
Sidechain outliers	120020	6010 (1.80-1.80)
RSRZ outliers	108989	5157 (1.80-1.80)

The table below summarises the geometric issues observed across the polymeric chains and their fit to the electron density. The red, orange, yellow and green segments on the lower bar indicate the fraction of residues that contain outliers for ≥ 3 , 2, 1 and 0 types of geometric quality criteria. A grey segment represents the fraction of residues that are not modelled. The numeric value for each fraction is indicated below the corresponding segment, with a dot representing fractions $\leq 5\%$. The upper red bar (where present) indicates the fraction of residues that have poor fit to the electron density. The numeric value is given above the bar.

Mol	Chain	Length	Quality of chain
1	A	454	<div> <div>14%</div> <div>92%</div> <div>7%</div> </div>

2 Entry composition

There are 3 unique types of molecules in this entry. The entry contains 4025 atoms, of which 0 are hydrogens and 0 are deuteriums.

In the tables below, the ZeroOcc column contains the number of atoms modelled with zero occupancy, the AltConf column contains the number of residues with at least one atom in alternate conformation and the Trace column contains the number of residues modelled with at most 2 atoms.

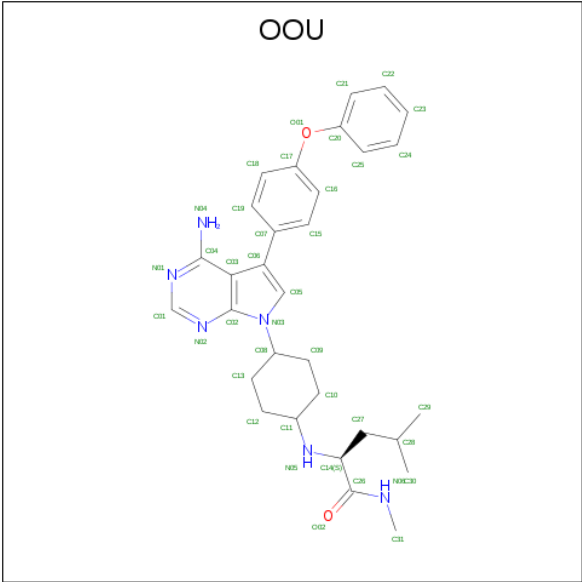
- Molecule 1 is a protein called Tyrosine-protein kinase HCK.

Mol	Chain	Residues	Atoms						ZeroOcc	AltConf	Trace
			Total	C	N	O	P	S			
1	A	447	3613	2306	609	677	1	20	0	0	0

There are 11 discrepancies between the modelled and reference sequences:

Chain	Residue	Modelled	Actual	Comment	Reference
A	78	GLY	-	expression tag	UNP P08631
A	79	ALA	-	expression tag	UNP P08631
A	80	MET	-	expression tag	UNP P08631
A	81	GLY	-	expression tag	UNP P08631
A	82	SER	-	expression tag	UNP P08631
A	83	GLY	-	expression tag	UNP P08631
A	84	ILE	-	expression tag	UNP P08631
A	85	ARG	-	linker	UNP P08631
A	528	GLU	GLN	engineered mutation	UNP P08631
A	529	GLU	GLN	engineered mutation	UNP P08631
A	530	ILE	GLN	engineered mutation	UNP P08631

- Molecule 2 is (2 {S})-2-[[4-[4-azanyl-5-(4-phenoxyphenyl)pyrrolo[2,3-d]pyrimidin-7-yl]cyclohexyl]amino]- {N},4-dimethyl-pentanamide (three-letter code: OOU) (formula: C₃₁H₃₈N₆O₂).



Mol	Chain	Residues	Atoms				ZeroOcc	AltConf
2	A	1	Total	C	N	O	0	0
			39	31	6	2		

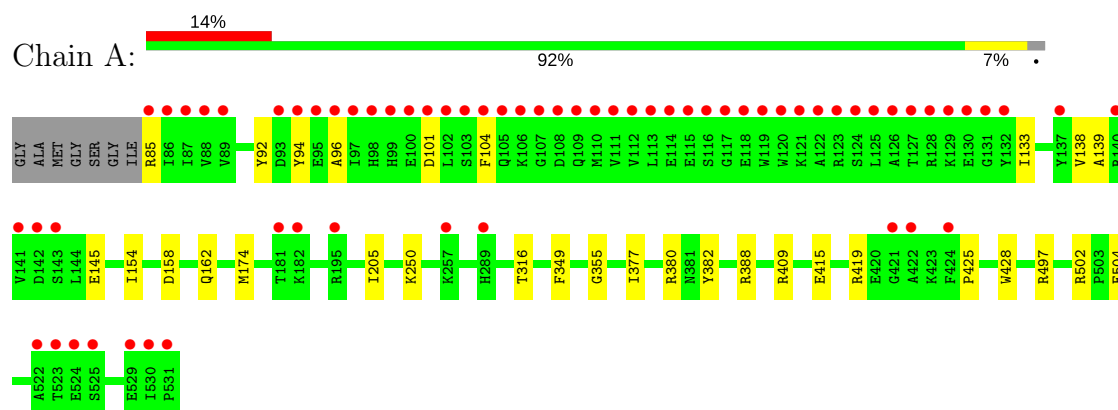
- Molecule 3 is water.

Mol	Chain	Residues	Atoms		ZeroOcc	AltConf
3	A	373	Total	O	0	0
			373	373		

3 Residue-property plots [i](#)

These plots are drawn for all protein, RNA and DNA chains in the entry. The first graphic for a chain summarises the proportions of the various outlier classes displayed in the second graphic. The second graphic shows the sequence view annotated by issues in geometry and electron density. Residues are color-coded according to the number of geometric quality criteria for which they contain at least one outlier: green = 0, yellow = 1, orange = 2 and red = 3 or more. A red dot above a residue indicates a poor fit to the electron density ($RSRZ > 2$). Stretches of 2 or more consecutive residues without any outlier are shown as a green connector. Residues present in the sample, but not in the model, are shown in grey.

- Molecule 1: Tyrosine-protein kinase HCK



4 Data and refinement statistics

Property	Value	Source
Space group	P 21 21 21	Depositor
Cell constants a, b, c, α , β , γ	43.07Å 85.34Å 129.72Å 90.00° 90.00° 90.00°	Depositor
Resolution (Å)	42.67 – 1.80 42.67 – 1.80	Depositor EDS
% Data completeness (in resolution range)	99.0 (42.67-1.80) 99.0 (42.67-1.80)	Depositor EDS
R_{merge}	0.08	Depositor
R_{sym}	(Not available)	Depositor
$\langle I/\sigma(I) \rangle$ ¹	1.99 (at 1.79Å)	Xtriage
Refinement program	PHENIX 1.9_1690	Depositor
R, R_{free}	0.181 , 0.224 0.186 , 0.225	Depositor DCC
R_{free} test set	2000 reflections (4.45%)	wwPDB-VP
Wilson B-factor (Å ²)	24.0	Xtriage
Anisotropy	0.338	Xtriage
Bulk solvent k_{sol} (e/Å ³), B_{sol} (Å ²)	0.37 , 53.8	EDS
L-test for twinning ²	$\langle L \rangle = 0.50$, $\langle L^2 \rangle = 0.33$	Xtriage
Estimated twinning fraction	No twinning to report.	Xtriage
F_o, F_c correlation	0.96	EDS
Total number of atoms	4025	wwPDB-VP
Average B, all atoms (Å ²)	37.0	wwPDB-VP

Xtriage's analysis on translational NCS is as follows: *The largest off-origin peak in the Patterson function is 5.59% of the height of the origin peak. No significant pseudotranslation is detected.*

¹Intensities estimated from amplitudes.

²Theoretical values of $\langle |L| \rangle$, $\langle L^2 \rangle$ for acentric reflections are 0.5, 0.333 respectively for untwinned datasets, and 0.375, 0.2 for perfectly twinned datasets.

5 Model quality

5.1 Standard geometry

Bond lengths and bond angles in the following residue types are not validated in this section: OOU, PTR

The Z score for a bond length (or angle) is the number of standard deviations the observed value is removed from the expected value. A bond length (or angle) with $|Z| > 5$ is considered an outlier worth inspection. RMSZ is the root-mean-square of all Z scores of the bond lengths (or angles).

Mol	Chain	Bond lengths		Bond angles	
		RMSZ	$\# Z > 5$	RMSZ	$\# Z > 5$
1	A	0.36	0/3682	0.49	0/4972

There are no bond length outliers.

There are no bond angle outliers.

There are no chirality outliers.

There are no planarity outliers.

5.2 Too-close contacts

In the following table, the Non-H and H(model) columns list the number of non-hydrogen atoms and hydrogen atoms in the chain respectively. The H(added) column lists the number of hydrogen atoms added and optimized by MolProbity. The Clashes column lists the number of clashes within the asymmetric unit, whereas Symm-Clashes lists symmetry related clashes.

Mol	Chain	Non-H	H(model)	H(added)	Clashes	Symm-Clashes
1	A	3613	0	3574	24	0
2	A	39	0	0	0	0
3	A	373	0	0	8	3
All	All	4025	0	3574	24	3

The all-atom clashscore is defined as the number of clashes found per 1000 atoms (including hydrogen atoms). The all-atom clashscore for this structure is 3.

All (24) close contacts within the same asymmetric unit are listed below, sorted by their clash magnitude.

Atom-1	Atom-2	Interatomic distance (Å)	Clash overlap (Å)
1:A:409:ARG:NH2	3:A:701:HOH:O	1.86	1.03

Continued on next page...

Continued from previous page...

Atom-1	Atom-2	Interatomic distance (Å)	Clash overlap (Å)
1:A:85:ARG:N	3:A:706:HOH:O	2.22	0.72
1:A:205:ILE:O	3:A:702:HOH:O	2.08	0.72
1:A:96:ALA:HA	1:A:101:ASP:HB2	1.82	0.62
1:A:139:ALA:HB1	1:A:145:GLU:HB2	1.91	0.52
1:A:158:ASP:OD1	3:A:704:HOH:O	2.19	0.51
1:A:154:ILE:HD11	1:A:174:MET:SD	2.51	0.51
1:A:497:ARG:NH1	3:A:711:HOH:O	2.33	0.49
1:A:425:PRO:HB2	1:A:428:TRP:HE3	1.78	0.48
1:A:158:ASP:O	1:A:162:GLN:HG3	2.13	0.48
1:A:388:ARG:NH2	1:A:425:PRO:HG3	2.30	0.47
1:A:425:PRO:HB2	1:A:428:TRP:CE3	2.50	0.46
1:A:92:TYR:HB3	1:A:250:LYS:HE2	1.96	0.46
1:A:425:PRO:HA	3:A:710:HOH:O	2.14	0.46
1:A:388:ARG:NH2	3:A:708:HOH:O	2.28	0.45
1:A:349:PHE:O	1:A:355:GLY:HA3	2.17	0.45
1:A:94:TYR:O	1:A:104:PHE:HB2	2.16	0.44
1:A:377:ILE:HG23	1:A:382:TYR:HB3	1.98	0.44
1:A:133:ILE:HD12	1:A:138:VAL:HG11	2.00	0.44
1:A:415:GLU:O	1:A:419:ARG:HG3	2.19	0.43
1:A:85:ARG:O	3:A:705:HOH:O	2.21	0.43
1:A:502:ARG:NH2	1:A:504:GLU:OE1	2.52	0.42
1:A:316:THR:OG1	1:A:380:ARG:NH2	2.53	0.41
1:A:94:TYR:H	1:A:104:PHE:HB2	1.85	0.41

All (3) symmetry-related close contacts are listed below. The label for Atom-2 includes the symmetry operator and encoded unit-cell translations to be applied.

Atom-1	Atom-2	Interatomic distance (Å)	Clash overlap (Å)
3:A:857:HOH:O	3:A:1019:HOH:O[1_655]	2.05	0.15
3:A:742:HOH:O	3:A:1020:HOH:O[1_455]	2.07	0.13
3:A:1064:HOH:O	3:A:1066:HOH:O[3_554]	2.12	0.08

5.3 Torsion angles

5.3.1 Protein backbone

In the following table, the Percentiles column shows the percent Ramachandran outliers of the chain as a percentile score with respect to all X-ray entries followed by that with respect to entries of similar resolution.

The Analysed column shows the number of residues for which the backbone conformation was analysed, and the total number of residues.

Mol	Chain	Analysed	Favoured	Allowed	Outliers	Percentiles	
1	A	444/454 (98%)	425 (96%)	19 (4%)	0	100	100

There are no Ramachandran outliers to report.

5.3.2 Protein sidechains [i](#)

In the following table, the Percentiles column shows the percent sidechain outliers of the chain as a percentile score with respect to all X-ray entries followed by that with respect to entries of similar resolution.

The Analysed column shows the number of residues for which the sidechain conformation was analysed, and the total number of residues.

Mol	Chain	Analysed	Rotameric	Outliers	Percentiles	
1	A	390/393 (99%)	390 (100%)	0	100	100

There are no protein residues with a non-rotameric sidechain to report.

Some sidechains can be flipped to improve hydrogen bonding and reduce clashes. There are no such sidechains identified.

5.3.3 RNA [i](#)

There are no RNA molecules in this entry.

5.4 Non-standard residues in protein, DNA, RNA chains [i](#)

1 non-standard protein/DNA/RNA residue is modelled in this entry.

In the following table, the Counts columns list the number of bonds (or angles) for which Mogul statistics could be retrieved, the number of bonds (or angles) that are observed in the model and the number of bonds (or angles) that are defined in the Chemical Component Dictionary. The Link column lists molecule types, if any, to which the group is linked. The Z score for a bond length (or angle) is the number of standard deviations the observed value is removed from the expected value. A bond length (or angle) with $|Z| > 2$ is considered an outlier worth inspection. RMSZ is the root-mean-square of all Z scores of the bond lengths (or angles).

Mol	Type	Chain	Res	Link	Bond lengths			Bond angles		
					Counts	RMSZ	# Z > 2	Counts	RMSZ	# Z > 2
1	PTR	A	527	1	16,16,17	1.31	1 (6%)	21,22,24	0.61	0

In the following table, the Chirals column lists the number of chiral outliers, the number of chiral centers analysed, the number of these observed in the model and the number defined in the Chemical Component Dictionary. Similar counts are reported in the Torsion and Rings columns. '-' means no outliers of that kind were identified.

Mol	Type	Chain	Res	Link	Chirals	Torsions	Rings
1	PTR	A	527	1	-	0/9/11/13	0/1/1/1

All (1) bond length outliers are listed below:

Mol	Chain	Res	Type	Atoms	Z	Observed(Å)	Ideal(Å)
1	A	527	PTR	OH-CZ	-4.50	1.30	1.40

There are no bond angle outliers.

There are no chirality outliers.

There are no torsion outliers.

There are no ring outliers.

No monomer is involved in short contacts.

5.5 Carbohydrates [i](#)

There are no carbohydrates in this entry.

5.6 Ligand geometry [i](#)

1 ligand is modelled in this entry.

In the following table, the Counts columns list the number of bonds (or angles) for which Mogul statistics could be retrieved, the number of bonds (or angles) that are observed in the model and the number of bonds (or angles) that are defined in the Chemical Component Dictionary. The Link column lists molecule types, if any, to which the group is linked. The Z score for a bond length (or angle) is the number of standard deviations the observed value is removed from the expected value. A bond length (or angle) with $|Z| > 2$ is considered an outlier worth inspection. RMSZ is the root-mean-square of all Z scores of the bond lengths (or angles).

Mol	Type	Chain	Res	Link	Bond lengths			Bond angles		
					Counts	RMSZ	$\# Z > 2$	Counts	RMSZ	$\# Z > 2$
2	OOU	A	601	-	41,43,43	1.32	6 (14%)	47,60,60	1.29	9 (19%)

In the following table, the Chirals column lists the number of chiral outliers, the number of chiral centers analysed, the number of these observed in the model and the number defined in the Chemical Component Dictionary. Similar counts are reported in the Torsion and Rings columns.

'-' means no outliers of that kind were identified.

Mol	Type	Chain	Res	Link	Chirals	Torsions	Rings
2	OOU	A	601	-	-	0/22/36/36	0/5/5/5

All (6) bond length outliers are listed below:

Mol	Chain	Res	Type	Atoms	Z	Observed(Å)	Ideal(Å)
2	A	601	OOU	C06-C07	-3.32	1.43	1.49
2	A	601	OOU	C05-N03	2.05	1.41	1.38
2	A	601	OOU	C01-N02	2.14	1.35	1.32
2	A	601	OOU	C04-N04	2.23	1.43	1.34
2	A	601	OOU	C01-N01	2.76	1.39	1.33
2	A	601	OOU	C26-N06	3.97	1.38	1.32

All (9) bond angle outliers are listed below:

Mol	Chain	Res	Type	Atoms	Z	Observed(°)	Ideal(°)
2	A	601	OOU	C26-C14-N05	-3.04	104.69	112.70
2	A	601	OOU	C19-C07-C06	-2.31	116.99	120.86
2	A	601	OOU	C03-C04-N04	-2.18	118.66	122.72
2	A	601	OOU	C05-C06-C07	-2.07	121.44	125.37
2	A	601	OOU	N02-C01-N01	-2.04	127.11	128.86
2	A	601	OOU	C12-C13-C08	2.09	112.31	109.78
2	A	601	OOU	C17-O01-C20	2.31	124.25	118.77
2	A	601	OOU	C05-N03-C08	2.72	127.90	125.48
2	A	601	OOU	C15-C07-C06	3.62	126.91	120.86

There are no chirality outliers.

There are no torsion outliers.

There are no ring outliers.

No monomer is involved in short contacts.

5.7 Other polymers [i](#)

There are no such residues in this entry.

5.8 Polymer linkage issues [i](#)

There are no chain breaks in this entry.

6 Fit of model and data ⓘ

6.1 Protein, DNA and RNA chains ⓘ

In the following table, the column labelled ‘#RSRZ> 2’ contains the number (and percentage) of RSRZ outliers, followed by percent RSRZ outliers for the chain as percentile scores relative to all X-ray entries and entries of similar resolution. The OWAB column contains the minimum, median, 95th percentile and maximum values of the occupancy-weighted average B-factor per residue. The column labelled ‘Q< 0.9’ lists the number of (and percentage) of residues with an average occupancy less than 0.9.

Mol	Chain	Analysed	<RSRZ>	#RSRZ>2	OWAB(Å ²)	Q<0.9
1	A	446/454 (98%)	0.59	65 (14%) 2 1	14, 28, 91, 127	0

All (65) RSRZ outliers are listed below:

Mol	Chain	Res	Type	RSRZ
1	A	85	ARG	11.0
1	A	127	THR	10.7
1	A	126	ALA	10.5
1	A	125	LEU	9.5
1	A	103	SER	9.3
1	A	104	PHE	9.0
1	A	86	ILE	8.5
1	A	129	LYS	7.6
1	A	99	HIS	7.4
1	A	130	GLU	6.5
1	A	113	LEU	6.2
1	A	114	GLU	6.1
1	A	112	VAL	6.0
1	A	523	THR	6.0
1	A	117	GLY	5.4
1	A	131	GLY	5.3
1	A	96	ALA	5.3
1	A	116	SER	5.2
1	A	97	ILE	5.0
1	A	106	LYS	4.9
1	A	93	ASP	4.7
1	A	142	ASP	4.6
1	A	143	SER	4.1
1	A	123	ARG	4.0
1	A	128	ARG	3.8
1	A	100	GLU	3.8
1	A	88	VAL	3.8

Continued on next page...

Continued from previous page...

Mol	Chain	Res	Type	RSRZ
1	A	289	HIS	3.7
1	A	424	PHE	3.7
1	A	529	GLU	3.7
1	A	522	ALA	3.6
1	A	118	GLU	3.6
1	A	524	GLU	3.6
1	A	87	ILE	3.6
1	A	121	LYS	3.5
1	A	132	TYR	3.5
1	A	110	MET	3.4
1	A	531	PRO	3.4
1	A	107	GLY	3.3
1	A	115	GLU	3.2
1	A	257	LYS	3.2
1	A	105	GLN	3.1
1	A	195	ARG	3.1
1	A	124	SER	2.9
1	A	94	TYR	2.8
1	A	421	GLY	2.8
1	A	89	VAL	2.8
1	A	108	ASP	2.8
1	A	181	THR	2.7
1	A	120	TRP	2.7
1	A	141	VAL	2.6
1	A	109	GLN	2.5
1	A	525	SER	2.5
1	A	98	HIS	2.5
1	A	122	ALA	2.4
1	A	422	ALA	2.3
1	A	102	LEU	2.3
1	A	95	GLU	2.2
1	A	140	ARG	2.2
1	A	530	ILE	2.2
1	A	119	TRP	2.1
1	A	137	TYR	2.1
1	A	101	ASP	2.1
1	A	182	LYS	2.1
1	A	111	VAL	2.0

6.2 Non-standard residues in protein, DNA, RNA chains [i](#)

In the following table, the Atoms column lists the number of modelled atoms in the group and the number defined in the chemical component dictionary. The B-factors column lists the minimum, median, 95th percentile and maximum values of B factors of atoms in the group. The column labelled 'Q< 0.9' lists the number of atoms with occupancy less than 0.9.

Mol	Type	Chain	Res	Atoms	RSCC	RSR	B-factors(Å ²)	Q<0.9
1	PTR	A	527	16/17	0.96	0.09	26,35,44,46	0

6.3 Carbohydrates [i](#)

There are no carbohydrates in this entry.

6.4 Ligands [i](#)

In the following table, the Atoms column lists the number of modelled atoms in the group and the number defined in the chemical component dictionary. The B-factors column lists the minimum, median, 95th percentile and maximum values of B factors of atoms in the group. The column labelled 'Q< 0.9' lists the number of atoms with occupancy less than 0.9.

Mol	Type	Chain	Res	Atoms	RSCC	RSR	B-factors(Å ²)	Q<0.9
2	OOU	A	601	39/39	0.96	0.09	15,20,29,36	0

6.5 Other polymers [i](#)

There are no such residues in this entry.