



# Full wwPDB X-ray Structure Validation Report ⓘ

Jun 7, 2018 – 02:18 PM EDT

PDB ID : 1H3C  
Title : Structures of Human Oxidosqualene Cyclase Inhibitors Bound to an Homologous Enzyme  
Authors : Lenhart, A.; Reinert, D.J.; Weihofen, W.A.; Aebi, J.D.; Dehmlow, H.; Morand, O.H.; Schulz, G.E.  
Deposited on : 2002-08-25  
Resolution : 2.90 Å(reported)

This is a Full wwPDB X-ray Structure Validation Report for a publicly released PDB entry.

We welcome your comments at [validation@mail.wwpdb.org](mailto:validation@mail.wwpdb.org)

A user guide is available at

<https://www.wwpdb.org/validation/2017/XrayValidationReportHelp>

with specific help available everywhere you see the ⓘ symbol.

---

The following versions of software and data (see [references ⓘ](#)) were used in the production of this report:

MolProbity : 4.02b-467  
Mogul : 1.7.3 (157068), CSD as539be (2018)  
Xtriage (Phenix) : 1.13  
EDS : rb-20031172  
Percentile statistics : 20171227.v01 (using entries in the PDB archive December 27th 2017)  
Refmac : 5.8.0158  
CCP4 : 7.0 (Gargrove)  
Ideal geometry (proteins) : Engh & Huber (2001)  
Ideal geometry (DNA, RNA) : Parkinson et al. (1996)  
Validation Pipeline (wwPDB-VP) : rb-20031172

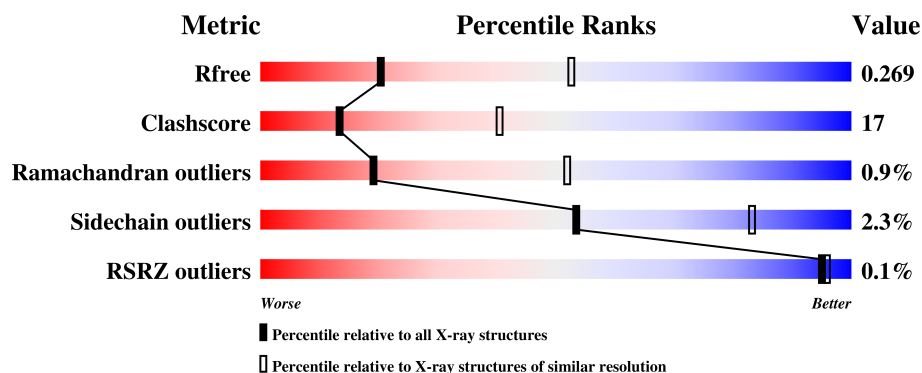
# 1 Overall quality at a glance

The following experimental techniques were used to determine the structure:

*X-RAY DIFFRACTION*

The reported resolution of this entry is 2.90 Å.

Percentile scores (ranging between 0-100) for global validation metrics of the entry are shown in the following graphic. The table shows the number of entries on which the scores are based.



Metric	Whole archive (#Entries)	Similar resolution (#Entries, resolution range(Å))
$R_{free}$	111664	1716 (2.90-2.90)
Clashscore	122126	1924 (2.90-2.90)
Ramachandran outliers	120053	1884 (2.90-2.90)
Sidechain outliers	120020	1886 (2.90-2.90)
RSRZ outliers	108989	1669 (2.90-2.90)

The table below summarises the geometric issues observed across the polymeric chains and their fit to the electron density. The red, orange, yellow and green segments on the lower bar indicate the fraction of residues that contain outliers for  $\geq 3$ , 2, 1 and 0 types of geometric quality criteria. A grey segment represents the fraction of residues that are not modelled. The numeric value for each fraction is indicated below the corresponding segment, with a dot representing fractions  $\leq 5\%$ . The upper red bar (where present) indicates the fraction of residues that have poor fit to the electron density. The numeric value is given above the bar.

Mol	Chain	Length	Quality of chain
1	A	631	<div> <div>61%</div> <div>36%</div> <div>..</div> </div>
1	B	631	<div> <div>65%</div> <div>32%</div> <div>..</div> </div>
1	C	631	<div> <div>61%</div> <div>35%</div> <div>..</div> </div>

## 2 Entry composition [i](#)

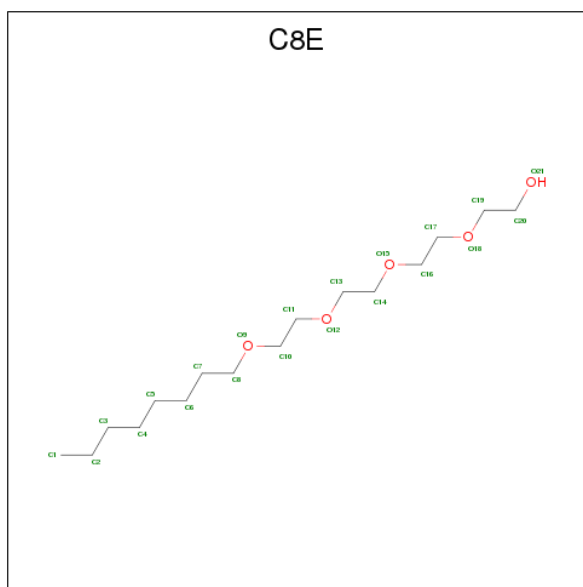
There are 4 unique types of molecules in this entry. The entry contains 15230 atoms, of which 0 are hydrogens and 0 are deuteriums.

In the tables below, the ZeroOcc column contains the number of atoms modelled with zero occupancy, the AltConf column contains the number of residues with at least one atom in alternate conformation and the Trace column contains the number of residues modelled with at most 2 atoms.

- Molecule 1 is a protein called SQUALENE-HOPENE CYCLASE.

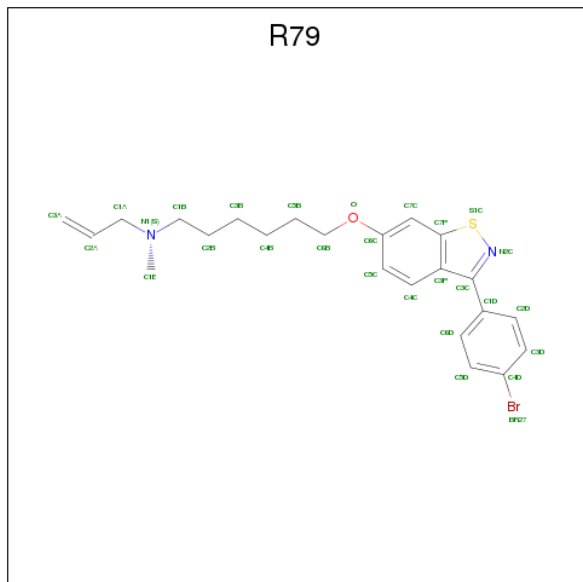
Mol	Chain	Residues	Atoms					ZeroOcc	AltConf	Trace
1	A	620	Total	C	N	O	S	0	0	1
			4964	3188	859	897	20			
1	B	620	Total	C	N	O	S	0	0	1
			4964	3188	859	897	20			
1	C	620	Total	C	N	O	S	0	0	1
			4964	3188	859	897	20			

- Molecule 2 is (HYDROXYETHYLOXY)TRI(ETHYLOXY)OCTANE (three-letter code: C8E) (formula:  $C_{16}H_{34}O_5$ ).



Mol	Chain	Residues	Atoms			ZeroOcc	AltConf
2	A	1	Total	C	O	0	0
			21	16	5		
2	B	1	Total	C	O	0	0
			21	16	5		
2	C	1	Total	C	O	0	0
			21	16	5		

- Molecule 3 is N-(6-{[3-(4-BROMOPHENYL)-1,2-BENZISOTHIAZOL-6-YL]OXY}HEXYL)-N-METHYLPROP-2-EN-1-AMINE (three-letter code: R79) (formula:  $C_{23}H_{27}BrN_2OS$ ).



Mol	Chain	Residues	Atoms						ZeroOcc	AltConf
3	A	1	Total	Br	C	N	O	S	0	0
			28	1	23	2	1	1		
3	B	1	Total	Br	C	N	O	S	0	0
			28	1	23	2	1	1		
3	C	1	Total	Br	C	N	O	S	0	0
			28	1	23	2	1	1		

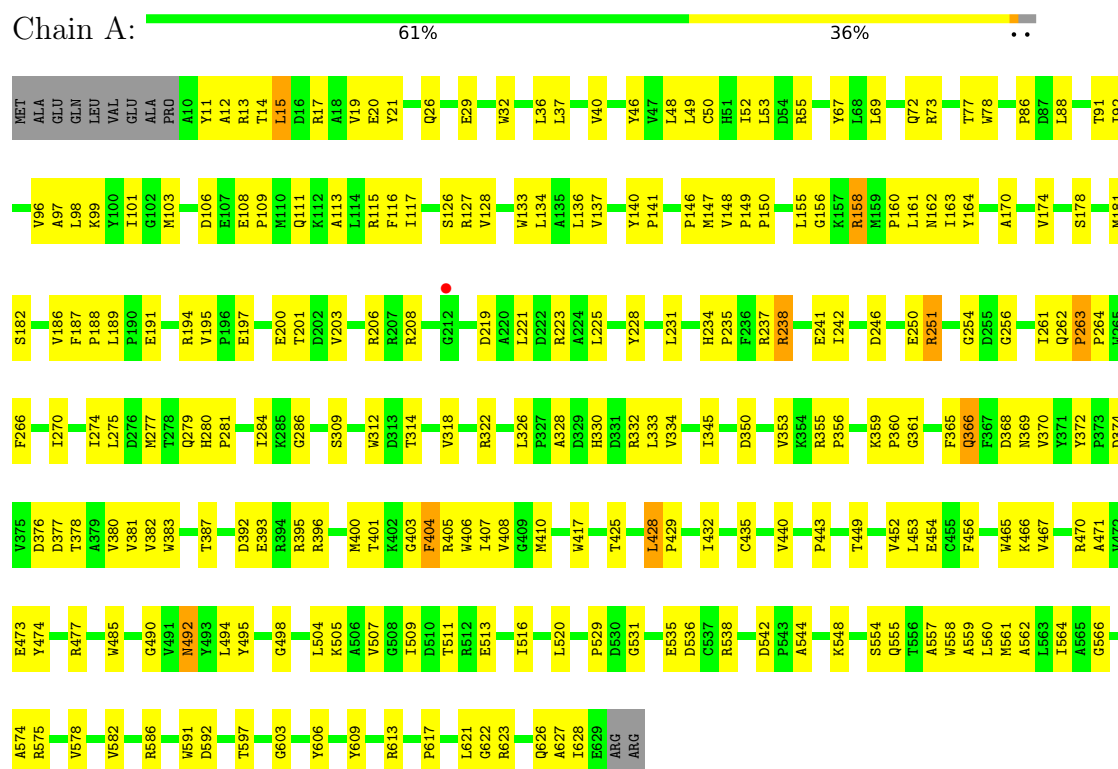
- Molecule 4 is water.

Mol	Chain	Residues	Atoms		ZeroOcc	AltConf
4	A	51	Total	O	0	0
			51	51		
4	B	66	Total	O	0	0
			66	66		
4	C	74	Total	O	0	0
			74	74		

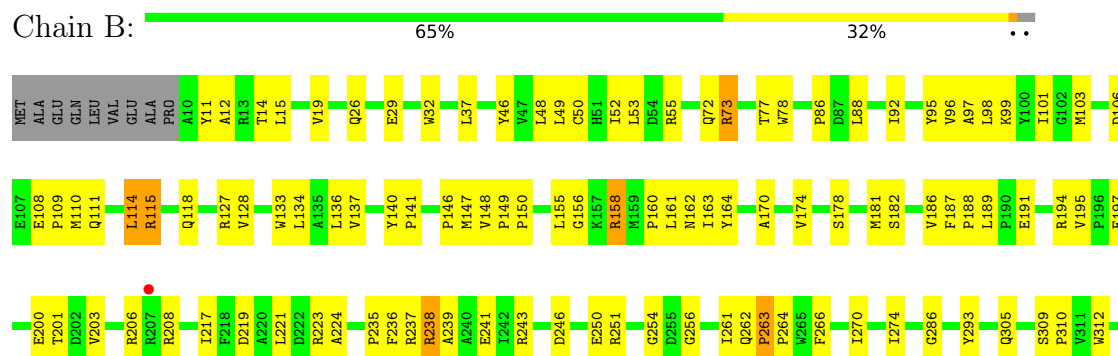
### 3 Residue-property plots

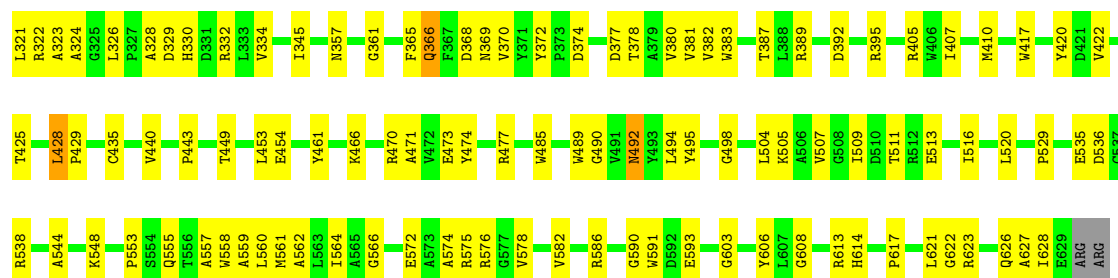
These plots are drawn for all protein, RNA and DNA chains in the entry. The first graphic for a chain summarises the proportions of the various outlier classes displayed in the second graphic. The second graphic shows the sequence view annotated by issues in geometry and electron density. Residues are color-coded according to the number of geometric quality criteria for which they contain at least one outlier: green = 0, yellow = 1, orange = 2 and red = 3 or more. A red dot above a residue indicates a poor fit to the electron density ( $RSRZ > 2$ ). Stretches of 2 or more consecutive residues without any outlier are shown as a green connector. Residues present in the sample, but not in the model, are shown in grey.

#### • Molecule 1: SQUALENE-HOPENE CYCLASE



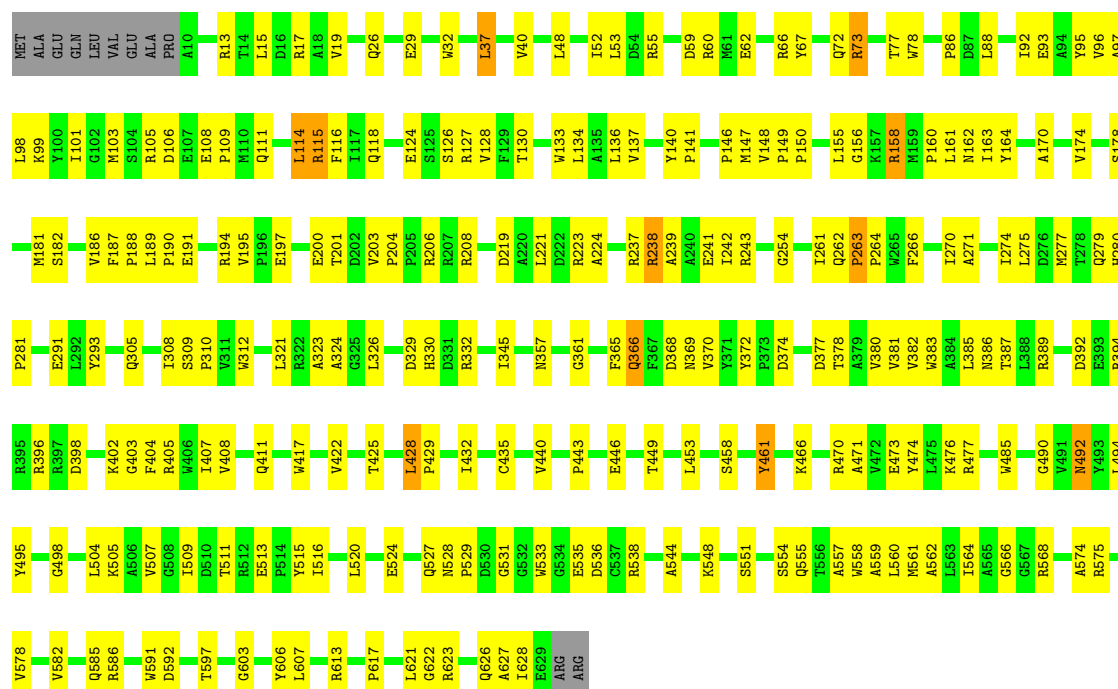
#### • Molecule 1: SQUALENE-HOPENE CYCLASE





### • Molecule 1: SQUALENE-HOPENE CYCLASE

Chain C: 61% 35%



## 4 Data and refinement statistics

Property	Value	Source
Space group	P 32 2 1	Depositor
Cell constants a, b, c, $\alpha$ , $\beta$ , $\gamma$	140.75Å 140.75Å 244.31Å 90.00° 90.00° 120.00°	Depositor
Resolution (Å)	25.00 – 2.90 46.13 – 2.80	Depositor EDS
% Data completeness (in resolution range)	73.0 (25.00-2.90) 71.6 (46.13-2.80)	Depositor EDS
$R_{merge}$	0.12	Depositor
$R_{sym}$	(Not available)	Depositor
$\langle I/\sigma(I) \rangle$ <sup>1</sup>	3.05 (at 2.81Å)	Xtriage
Refinement program	CNS 1.1	Depositor
R, $R_{free}$	0.258 , 0.281 0.236 , 0.269	Depositor DCC
$R_{free}$ test set	1982 reflections (3.98%)	wwPDB-VP
Wilson B-factor (Å <sup>2</sup> )	14.1	Xtriage
Anisotropy	2.127	Xtriage
Bulk solvent $k_{sol}$ (e/Å <sup>3</sup> ), $B_{sol}$ (Å <sup>2</sup> )	0.21 , 6.6	EDS
L-test for twinning <sup>2</sup>	$\langle  L  \rangle = 0.45$ , $\langle L^2 \rangle = 0.27$	Xtriage
Estimated twinning fraction	0.000 for -h,-k,l	Xtriage
$F_o, F_c$ correlation	0.83	EDS
Total number of atoms	15230	wwPDB-VP
Average B, all atoms (Å <sup>2</sup> )	34.0	wwPDB-VP

Xtriage's analysis on translational NCS is as follows: *The analyses of the Patterson function reveals a significant off-origin peak that is 22.85 % of the origin peak, indicating pseudo-translational symmetry. The chance of finding a peak of this or larger height randomly in a structure without pseudo-translational symmetry is equal to 5.2470e-03. The detected translational NCS is most likely also responsible for the elevated intensity ratio.*

<sup>1</sup> Intensities estimated from amplitudes.

<sup>2</sup> Theoretical values of  $\langle |L| \rangle$ ,  $\langle L^2 \rangle$  for acentric reflections are 0.5, 0.333 respectively for untwinned datasets, and 0.375, 0.2 for perfectly twinned datasets.

## 5 Model quality [i](#)

### 5.1 Standard geometry [i](#)

Bond lengths and bond angles in the following residue types are not validated in this section: R79, C8E

The Z score for a bond length (or angle) is the number of standard deviations the observed value is removed from the expected value. A bond length (or angle) with  $|Z| > 5$  is considered an outlier worth inspection. RMSZ is the root-mean-square of all Z scores of the bond lengths (or angles).

Mol	Chain	Bond lengths		Bond angles	
		RMSZ	# Z  >5	RMSZ	# Z  >5
1	A	0.29	0/5117	0.51	0/6967
1	B	0.30	0/5117	0.52	0/6967
1	C	0.29	0/5117	0.51	0/6967
All	All	0.29	0/15351	0.51	0/20901

There are no bond length outliers.

There are no bond angle outliers.

There are no chirality outliers.

There are no planarity outliers.

### 5.2 Too-close contacts [i](#)

In the following table, the Non-H and H(model) columns list the number of non-hydrogen atoms and hydrogen atoms in the chain respectively. The H(added) column lists the number of hydrogen atoms added and optimized by MolProbity. The Clashes column lists the number of clashes within the asymmetric unit, whereas Symm-Clashes lists symmetry related clashes.

Mol	Chain	Non-H	H(model)	H(added)	Clashes	Symm-Clashes
1	A	4964	0	4787	174	0
1	B	4964	0	4787	165	0
1	C	4964	0	4787	178	0
2	A	21	0	34	2	0
2	B	21	0	34	0	0
2	C	21	0	34	0	0
3	A	28	0	27	0	0
3	B	28	0	27	0	0
3	C	28	0	27	1	0
4	A	51	0	0	7	0

*Continued on next page...*



*Continued from previous page...*

Mol	Chain	Non-H	H(model)	H(added)	Clashes	Symm-Clashes
4	B	66	0	0	10	0
4	C	74	0	0	11	0
All	All	15230	0	14544	513	0

The all-atom clashscore is defined as the number of clashes found per 1000 atoms (including hydrogen atoms). The all-atom clashscore for this structure is 17.

All (513) close contacts within the same asymmetric unit are listed below, sorted by their clash magnitude.

Atom-1	Atom-2	Interatomic distance (Å)	Clash overlap (Å)
1:C:238:ARG:HB2	1:C:238:ARG:HH11	1.17	1.01
1:B:217:ILE:H	1:B:217:ILE:HD12	1.31	0.95
1:B:127:ARG:HB3	1:B:208:ARG:HH12	1.39	0.88
1:A:254:GLY:HA3	1:A:368:ASP:OD2	1.74	0.87
1:A:520:LEU:HD21	1:A:566:GLY:HA3	1.56	0.86
1:B:520:LEU:HD21	1:B:566:GLY:HA3	1.58	0.85
1:C:520:LEU:HD21	1:C:566:GLY:HA3	1.58	0.83
1:B:435:CYS:HB3	1:B:440:VAL:HG21	1.61	0.82
1:A:622:GLY:O	1:A:626:GLN:HG2	1.79	0.82
1:A:238:ARG:HB2	1:A:238:ARG:HH11	1.44	0.82
1:A:435:CYS:HB3	1:A:440:VAL:HG21	1.62	0.81
1:B:622:GLY:O	1:B:626:GLN:HG2	1.80	0.81
1:C:622:GLY:O	1:C:626:GLN:HG2	1.79	0.81
1:C:127:ARG:HB3	1:C:208:ARG:HH12	1.47	0.79
1:C:435:CYS:HB3	1:C:440:VAL:HG21	1.64	0.78
1:A:156:GLY:HA3	1:A:158:ARG:NH2	2.00	0.77
1:A:127:ARG:HB3	1:A:208:ARG:HH12	1.49	0.76
1:C:443:PRO:HG2	4:C:2053:HOH:O	1.85	0.76
1:B:392:ASP:OD2	1:B:395:ARG:HB2	1.87	0.75
1:C:238:ARG:CB	1:C:238:ARG:HH11	1.97	0.74
1:C:156:GLY:HA3	1:C:158:ARG:NH2	2.02	0.73
1:B:238:ARG:HB2	1:B:238:ARG:HH11	1.53	0.73
1:C:466:LYS:O	1:C:470:ARG:HG3	1.88	0.73
1:B:156:GLY:HA3	1:B:158:ARG:NH2	2.04	0.72
1:B:127:ARG:HB3	1:B:208:ARG:NH1	2.05	0.71
1:B:251:ARG:HH11	1:B:251:ARG:HG3	1.55	0.71
1:B:608:GLY:HA2	4:B:2059:HOH:O	1.89	0.71
1:A:113:ALA:O	1:A:117:ILE:HG12	1.91	0.70
1:A:40:VAL:HG13	4:A:2006:HOH:O	1.90	0.70
1:C:544:ALA:O	1:C:548:LYS:HD3	1.92	0.69
1:C:263:PRO:HB2	1:C:264:PRO:CD	2.22	0.69

*Continued on next page...*

*Continued from previous page...*

Atom-1	Atom-2	Interatomic distance (Å)	Clash overlap (Å)
1:B:309:SER:HB3	1:B:365:PHE:CZ	2.27	0.69
1:B:326:LEU:HD22	1:B:330:HIS:CD2	2.28	0.69
1:A:544:ALA:O	1:A:548:LYS:HD3	1.93	0.69
1:C:449:THR:O	1:C:453:LEU:HD13	1.93	0.69
1:A:170:ALA:O	1:A:174:VAL:HG23	1.93	0.69
1:A:609:TYR:HA	4:A:2002:HOH:O	1.92	0.68
1:B:254:GLY:HA3	1:B:368:ASP:OD2	1.93	0.68
1:C:446:GLU:HB2	4:C:2054:HOH:O	1.92	0.68
1:B:263:PRO:HB2	1:B:264:PRO:CD	2.24	0.68
1:A:449:THR:O	1:A:453:LEU:HD13	1.93	0.67
1:C:345:ILE:HD12	1:C:370:VAL:HG12	1.77	0.67
1:A:246:ASP:O	1:A:250:GLU:HG3	1.95	0.67
1:A:309:SER:HB3	1:A:365:PHE:CZ	2.30	0.67
1:C:578:VAL:O	1:C:582:VAL:HG23	1.95	0.67
1:A:263:PRO:HB2	1:A:264:PRO:CD	2.25	0.66
1:B:246:ASP:O	1:B:250:GLU:HG3	1.94	0.66
1:C:254:GLY:HA3	1:C:368:ASP:OD2	1.95	0.66
1:B:627:ALA:C	1:B:628:ILE:HD12	2.15	0.66
1:A:108:GLU:HB2	1:A:109:PRO:HD3	1.78	0.66
1:B:326:LEU:HD22	1:B:330:HIS:HD2	1.58	0.66
1:A:507:VAL:HG23	1:A:509:ILE:HG12	1.76	0.65
1:A:270:ILE:O	1:A:274:ILE:HG12	1.96	0.65
1:A:578:VAL:O	1:A:582:VAL:HG23	1.96	0.65
1:A:627:ALA:C	1:A:628:ILE:HD12	2.17	0.65
1:C:137:VAL:HB	1:C:189:LEU:HG	1.77	0.65
1:C:461:TYR:HD1	1:C:461:TYR:H	1.45	0.65
1:C:291:GLU:HG2	4:C:2029:HOH:O	1.97	0.65
1:C:507:VAL:HG23	1:C:509:ILE:HG12	1.78	0.65
1:B:137:VAL:HB	1:B:189:LEU:HG	1.78	0.65
1:C:627:ALA:C	1:C:628:ILE:HD12	2.15	0.65
1:A:137:VAL:HB	1:A:189:LEU:HG	1.79	0.65
1:B:261:ILE:HG13	1:B:264:PRO:HD2	1.79	0.65
1:B:449:THR:O	1:B:453:LEU:HD13	1.96	0.64
1:A:490:GLY:HA3	1:A:495:TYR:CD2	2.33	0.64
1:B:507:VAL:HG23	1:B:509:ILE:HG12	1.79	0.64
1:C:458:SER:HB2	4:C:2042:HOH:O	1.96	0.64
1:B:473:GLU:O	1:B:477:ARG:HG3	1.96	0.64
1:C:127:ARG:HB3	1:C:208:ARG:NH1	2.11	0.64
1:C:309:SER:HB3	1:C:365:PHE:CZ	2.32	0.64
1:A:91:THR:HG22	1:A:117:ILE:HD11	1.80	0.64
1:A:353:VAL:HG23	2:A:700:C8E:H111	1.80	0.64

*Continued on next page...*

*Continued from previous page...*

Atom-1	Atom-2	Interatomic distance (Å)	Clash overlap (Å)
1:A:345:ILE:HD12	1:A:370:VAL:HA	1.79	0.64
1:B:170:ALA:O	1:B:174:VAL:HG23	1.99	0.63
1:C:490:GLY:HA3	1:C:495:TYR:CD2	2.32	0.63
1:A:127:ARG:HB3	1:A:208:ARG:NH1	2.12	0.63
1:C:560:LEU:O	1:C:564:ILE:HG13	1.98	0.63
1:A:406:TRP:O	1:A:410:MET:HG2	1.98	0.63
1:C:108:GLU:HB3	1:C:109:PRO:HD3	1.81	0.63
1:C:345:ILE:HD11	4:C:2038:HOH:O	1.99	0.63
1:B:490:GLY:HA3	1:B:495:TYR:CD2	2.34	0.63
1:A:261:ILE:HG13	1:A:264:PRO:HD2	1.81	0.62
1:C:261:ILE:HG13	1:C:264:PRO:HD2	1.82	0.62
1:A:473:GLU:O	1:A:477:ARG:HG3	1.99	0.62
1:C:369:ASN:HD21	1:C:372:TYR:HB2	1.65	0.62
1:C:170:ALA:O	1:C:174:VAL:HG23	2.00	0.62
1:A:345:ILE:HD12	1:A:370:VAL:HG12	1.82	0.62
1:C:557:ALA:O	1:C:561:MET:HG3	2.00	0.61
1:B:544:ALA:O	1:B:548:LYS:HD3	2.01	0.61
1:B:345:ILE:HD12	1:B:370:VAL:HA	1.82	0.60
1:A:262:GLN:HG2	1:A:266:PHE:CE1	2.37	0.60
1:C:378:THR:CG2	1:C:407:ILE:HD11	2.30	0.60
1:B:263:PRO:HB2	1:B:264:PRO:HD3	1.84	0.60
1:C:505:LYS:HD3	1:C:505:LYS:O	2.01	0.60
1:B:345:ILE:HD12	1:B:370:VAL:HG12	1.83	0.59
1:C:574:ALA:O	1:C:578:VAL:HG23	2.02	0.59
1:A:330:HIS:O	1:A:334:VAL:HG23	2.02	0.59
1:C:238:ARG:HB2	1:C:238:ARG:NH1	2.03	0.59
1:C:263:PRO:HB2	1:C:264:PRO:HD3	1.84	0.59
1:B:217:ILE:N	1:B:217:ILE:HD12	2.12	0.59
1:B:97:ALA:O	1:B:101:ILE:HG13	2.03	0.59
1:C:403:GLY:O	1:C:407:ILE:HG12	2.03	0.59
1:A:13:ARG:HH11	1:A:13:ARG:HG2	1.68	0.59
1:A:72:GLN:HB2	1:A:78:TRP:CZ2	2.38	0.58
1:A:560:LEU:O	1:A:564:ILE:HG13	2.02	0.58
1:C:383:TRP:O	1:C:387:THR:HG23	2.03	0.58
1:C:473:GLU:O	1:C:477:ARG:HG3	2.02	0.58
1:A:466:LYS:O	1:A:470:ARG:HG3	2.03	0.58
1:A:535:GLU:HA	1:A:548:LYS:O	2.03	0.58
1:C:219:ASP:O	1:C:223:ARG:HG3	2.03	0.58
1:B:323:ALA:HB2	4:B:2021:HOH:O	2.04	0.58
1:C:128:VAL:HG13	1:C:146:PRO:HD2	1.85	0.58
1:B:330:HIS:O	1:B:334:VAL:HG23	2.03	0.58

*Continued on next page...*

*Continued from previous page...*

Atom-1	Atom-2	Interatomic distance (Å)	Clash overlap (Å)
1:A:557:ALA:O	1:A:561:MET:HG3	2.03	0.57
1:C:97:ALA:O	1:C:101:ILE:HG13	2.04	0.57
1:A:128:VAL:HG13	1:A:146:PRO:HD2	1.86	0.57
1:A:378:THR:O	1:A:382:VAL:HG23	2.03	0.57
1:B:221:LEU:O	1:B:224:ALA:HB3	2.05	0.57
1:B:466:LYS:O	1:B:470:ARG:HG3	2.04	0.57
1:C:270:ILE:O	1:C:274:ILE:HG12	2.04	0.57
1:A:574:ALA:O	1:A:578:VAL:HG23	2.04	0.57
1:C:326:LEU:HD22	1:C:330:HIS:HD2	1.69	0.57
1:A:97:ALA:O	1:A:101:ILE:HG13	2.04	0.57
1:C:613:ARG:O	1:C:617:PRO:HG2	2.05	0.57
1:C:37:LEU:HA	4:C:2004:HOH:O	2.05	0.57
1:C:73:ARG:HD3	1:C:77:THR:O	2.05	0.57
1:A:106:ASP:O	1:A:111:GLN:HG2	2.05	0.56
1:B:262:GLN:HG2	1:B:266:PHE:CE1	2.40	0.56
1:A:383:TRP:CZ3	1:A:454:GLU:HG2	2.40	0.56
1:B:251:ARG:HG3	1:B:251:ARG:NH1	2.20	0.56
1:B:557:ALA:O	1:B:561:MET:HG3	2.04	0.56
1:C:262:GLN:HG2	1:C:266:PHE:CE1	2.39	0.56
1:C:326:LEU:HD22	1:C:330:HIS:CD2	2.40	0.56
1:A:263:PRO:HB2	1:A:264:PRO:HD3	1.86	0.56
1:A:505:LYS:HD3	1:A:505:LYS:O	2.06	0.56
1:B:574:ALA:O	1:B:578:VAL:HG23	2.04	0.56
1:C:345:ILE:HD12	1:C:370:VAL:HA	1.87	0.56
1:C:498:GLY:HA2	1:C:562:ALA:HB2	1.87	0.55
1:B:133:TRP:HA	1:B:136:LEU:HD12	1.88	0.55
1:B:417:TRP:HE3	1:B:449:THR:HG23	1.71	0.55
1:C:275:LEU:O	1:C:277:MET:HG3	2.06	0.55
1:A:498:GLY:HA2	1:A:562:ALA:HB2	1.88	0.55
1:A:191:GLU:HA	1:A:194:ARG:HG2	1.88	0.55
1:B:505:LYS:O	1:B:505:LYS:HD3	2.06	0.55
1:B:312:TRP:CZ3	1:B:380:VAL:HG21	2.41	0.55
1:C:191:GLU:HA	1:C:194:ARG:HG2	1.88	0.55
1:B:14:THR:OG1	1:B:582:VAL:HG13	2.07	0.55
1:B:270:ILE:O	1:B:274:ILE:HG12	2.06	0.55
1:C:378:THR:O	1:C:382:VAL:HG23	2.07	0.55
1:A:14:THR:OG1	1:A:582:VAL:HG13	2.06	0.55
1:A:133:TRP:HA	1:A:136:LEU:HD12	1.87	0.55
1:A:256:GLY:O	1:A:286:GLY:HA2	2.07	0.55
1:B:219:ASP:O	1:B:223:ARG:HG3	2.06	0.55
1:B:489:TRP:HB2	4:B:2043:HOH:O	2.07	0.54

*Continued on next page...*

*Continued from previous page...*

Atom-1	Atom-2	Interatomic distance (Å)	Clash overlap (Å)
1:C:535:GLU:HA	1:C:548:LYS:O	2.08	0.54
1:A:369:ASN:HD21	1:A:372:TYR:HB2	1.72	0.54
1:C:160:PRO:O	1:C:161:LEU:HB2	2.06	0.54
1:A:279:GLN:HB2	4:A:2019:HOH:O	2.08	0.54
1:C:528:ASN:HB3	1:C:529:PRO:HD2	1.88	0.54
1:B:191:GLU:HA	1:B:194:ARG:HG2	1.88	0.54
1:A:322:ARG:NH2	1:A:328:ALA:HB2	2.23	0.54
1:A:312:TRP:CZ3	1:A:380:VAL:HG21	2.43	0.54
1:A:613:ARG:O	1:A:617:PRO:HG2	2.08	0.54
1:B:52:ILE:HG23	1:B:187:PHE:CD2	2.43	0.54
1:B:498:GLY:HA2	1:B:562:ALA:HB2	1.89	0.54
1:A:405:ARG:HH11	1:A:405:ARG:HG2	1.73	0.54
1:B:160:PRO:O	1:B:161:LEU:HB2	2.08	0.53
1:B:560:LEU:O	1:B:564:ILE:HG13	2.08	0.53
1:B:88:LEU:O	1:B:92:ILE:HG13	2.08	0.53
1:A:147:MET:HE1	1:A:181:MET:O	2.08	0.53
1:B:128:VAL:HG13	1:B:146:PRO:HD2	1.89	0.53
1:A:11:TYR:CD1	1:A:12:ALA:N	2.76	0.53
1:A:383:TRP:CH2	1:A:454:GLU:HG2	2.44	0.53
1:B:158:ARG:O	1:B:158:ARG:HG2	2.08	0.53
1:B:369:ASN:HD21	1:B:372:TYR:HB2	1.72	0.53
1:B:536:ASP:OD2	1:B:538:ARG:HG3	2.08	0.53
1:B:586:ARG:HH21	1:B:590:GLY:HA3	1.74	0.53
1:C:511:THR:HG23	4:C:2063:HOH:O	2.08	0.53
1:A:160:PRO:O	1:A:161:LEU:HB2	2.09	0.53
1:B:140:TYR:CD1	1:B:141:PRO:HD2	2.44	0.53
1:B:613:ARG:O	1:B:617:PRO:HG2	2.09	0.53
1:A:48:LEU:O	1:A:52:ILE:HG12	2.09	0.53
1:A:52:ILE:HG23	1:A:187:PHE:CD2	2.44	0.53
1:C:158:ARG:HG2	1:C:158:ARG:O	2.09	0.53
1:C:52:ILE:HG23	1:C:187:PHE:CD2	2.43	0.53
1:C:536:ASP:OD2	1:C:538:ARG:HG3	2.09	0.52
1:A:377:ASP:O	1:A:381:VAL:HG23	2.10	0.52
1:B:108:GLU:HB3	1:B:109:PRO:HD3	1.91	0.52
1:B:217:ILE:H	1:B:217:ILE:CD1	2.08	0.52
1:C:239:ALA:O	1:C:243:ARG:HG2	2.10	0.52
1:B:378:THR:HG22	1:B:407:ILE:HD11	1.91	0.52
1:C:332:ARG:HG2	1:C:332:ARG:HH11	1.75	0.52
1:B:191:GLU:HA	1:B:194:ARG:CG	2.40	0.52
1:B:48:LEU:O	1:B:52:ILE:HG12	2.10	0.52
1:A:150:PRO:CG	1:A:182:SER:HB2	2.40	0.52

*Continued on next page...*

*Continued from previous page...*

Atom-1	Atom-2	Interatomic distance (Å)	Clash overlap (Å)
1:A:494:LEU:HD22	1:A:559:ALA:HB2	1.91	0.52
1:B:332:ARG:HH11	1:B:332:ARG:HG2	1.75	0.52
1:C:392:ASP:OD1	1:C:394:ARG:HB3	2.10	0.52
1:C:411:GLN:HB2	1:C:417:TRP:CZ2	2.44	0.52
1:A:191:GLU:HA	1:A:194:ARG:CG	2.39	0.52
1:A:251:ARG:NH1	1:A:350:ASP:OD1	2.43	0.52
1:B:383:TRP:O	1:B:387:THR:HG23	2.09	0.52
1:C:377:ASP:O	1:C:381:VAL:HG23	2.10	0.52
1:C:312:TRP:CZ3	1:C:380:VAL:HG21	2.44	0.52
1:A:162:ASN:OD1	1:A:164:TYR:HB2	2.10	0.52
1:B:115:ARG:CB	1:B:115:ARG:HH11	2.22	0.51
1:C:369:ASN:ND2	1:C:372:TYR:HB2	2.24	0.51
1:B:127:ARG:CB	1:B:208:ARG:HH12	2.18	0.51
1:C:140:TYR:CD1	1:C:141:PRO:HD2	2.45	0.51
1:A:425:THR:HG22	1:A:443:PRO:HB3	1.93	0.51
1:C:114:LEU:HD11	1:C:197:GLU:HG3	1.93	0.51
1:A:513:GLU:HB2	1:A:516:ILE:HG12	1.92	0.51
1:B:383:TRP:CH2	1:B:454:GLU:HG2	2.45	0.51
1:C:133:TRP:HA	1:C:136:LEU:HD12	1.93	0.51
1:C:186:VAL:HG12	1:C:188:PRO:HD3	1.92	0.51
1:C:191:GLU:HA	1:C:194:ARG:CG	2.41	0.51
1:B:377:ASP:O	1:B:381:VAL:HG23	2.11	0.51
1:B:420:TYR:HB2	4:B:2037:HOH:O	2.09	0.51
1:A:158:ARG:O	1:A:158:ARG:HG2	2.11	0.51
1:B:369:ASN:ND2	1:B:372:TYR:HB2	2.25	0.51
1:B:186:VAL:HG12	1:B:188:PRO:HD3	1.93	0.50
1:C:405:ARG:HH11	1:C:405:ARG:HG2	1.76	0.50
1:A:156:GLY:HA3	1:A:158:ARG:HH21	1.77	0.50
1:A:98:LEU:HB3	1:A:103:MET:HG3	1.93	0.50
1:B:435:CYS:CB	1:B:440:VAL:HG21	2.39	0.50
1:A:96:VAL:HG21	1:A:134:LEU:HD21	1.93	0.50
1:B:345:ILE:HD11	4:B:2028:HOH:O	2.11	0.50
1:A:15:LEU:O	1:A:19:VAL:HG23	2.12	0.50
1:A:127:ARG:CB	1:A:208:ARG:HH12	2.23	0.50
1:A:536:ASP:OD2	1:A:538:ARG:HG3	2.11	0.50
1:B:73:ARG:HD3	1:B:77:THR:O	2.12	0.50
1:C:323:ALA:HB2	4:C:2031:HOH:O	2.11	0.50
1:A:133:TRP:O	1:A:136:LEU:HB2	2.10	0.50
1:A:186:VAL:HG12	1:A:188:PRO:HD3	1.94	0.50
1:A:393:GLU:OE1	1:A:393:GLU:HA	2.12	0.49
1:C:162:ASN:OD1	1:C:164:TYR:HB2	2.12	0.49

*Continued on next page...*

*Continued from previous page...*

Atom-1	Atom-2	Interatomic distance (Å)	Clash overlap (Å)
1:A:158:ARG:NE	1:A:158:ARG:H	2.10	0.49
1:B:158:ARG:NE	1:B:158:ARG:H	2.10	0.49
1:C:494:LEU:HD22	1:C:559:ALA:HB2	1.94	0.49
1:C:60:ARG:HG2	1:C:60:ARG:HH11	1.76	0.49
1:B:238:ARG:CB	1:B:238:ARG:HH11	2.22	0.49
1:A:326:LEU:HD22	1:A:330:HIS:HD2	1.77	0.49
1:A:353:VAL:CG2	2:A:700:C8E:H111	2.42	0.49
1:B:133:TRP:O	1:B:136:LEU:HB2	2.13	0.49
1:B:237:ARG:O	1:B:241:GLU:HG3	2.13	0.49
1:C:158:ARG:NE	1:C:158:ARG:H	2.10	0.49
1:C:586:ARG:HD3	1:C:592:ASP:OD2	2.12	0.49
1:A:26:GLN:HB2	1:A:32:TRP:CE2	2.48	0.49
1:A:275:LEU:O	1:A:277:MET:HG3	2.13	0.49
1:A:322:ARG:HD3	1:A:333:LEU:HD13	1.95	0.49
1:C:72:GLN:HB2	1:C:78:TRP:CZ2	2.48	0.49
1:B:603:GLY:HA2	1:B:606:TYR:OH	2.12	0.49
1:B:98:LEU:HB3	1:B:103:MET:HG3	1.95	0.49
1:C:13:ARG:HH22	1:C:17:ARG:NH2	2.11	0.49
1:A:623:ARG:O	1:A:626:GLN:HB2	2.13	0.49
1:B:150:PRO:CG	1:B:182:SER:HB2	2.43	0.49
1:B:26:GLN:HB2	1:B:32:TRP:CE2	2.47	0.49
1:B:29:GLU:H	1:B:29:GLU:CD	2.17	0.49
1:B:88:LEU:HG	1:B:92:ILE:HD11	1.95	0.48
1:C:329:ASP:HB3	1:C:389:ARG:HB2	1.95	0.48
1:A:186:VAL:O	1:A:188:PRO:HD3	2.13	0.48
1:A:369:ASN:ND2	1:A:372:TYR:HB2	2.28	0.48
1:B:162:ASN:OD1	1:B:164:TYR:HB2	2.13	0.48
1:C:13:ARG:HG2	1:C:13:ARG:HH11	1.78	0.48
1:C:150:PRO:CG	1:C:182:SER:HB2	2.43	0.48
1:C:513:GLU:HB2	1:C:516:ILE:HG12	1.93	0.48
1:C:53:LEU:O	1:C:55:ARG:HG3	2.13	0.48
1:C:405:ARG:HG2	1:C:405:ARG:NH1	2.28	0.48
1:C:404:PHE:O	1:C:408:VAL:HG23	2.12	0.48
1:A:365:PHE:HB3	1:A:366:GLN:OE1	2.13	0.48
1:B:239:ALA:O	1:B:243:ARG:HG2	2.13	0.48
1:C:99:LYS:HD3	1:C:195:VAL:HG12	1.95	0.48
1:A:219:ASP:O	1:A:223:ARG:HG3	2.12	0.48
1:A:492:ASN:HB3	1:A:535:GLU:CD	2.33	0.48
1:B:186:VAL:O	1:B:188:PRO:HD3	2.13	0.48
1:C:280:HIS:ND1	1:C:281:PRO:HD2	2.29	0.48
1:A:17:ARG:NH1	1:B:529:PRO:HD3	2.28	0.48

*Continued on next page...*



*Continued from previous page...*

Atom-1	Atom-2	Interatomic distance (Å)	Clash overlap (Å)
1:A:370:VAL:HG22	4:A:2024:HOH:O	2.13	0.48
1:B:147:MET:HE1	1:B:181:MET:O	2.14	0.48
1:B:378:THR:O	1:B:382:VAL:HG23	2.13	0.48
1:C:378:THR:HG22	1:C:407:ILE:HD11	1.94	0.48
1:A:140:TYR:CD1	1:A:141:PRO:HD2	2.49	0.48
1:C:492:ASN:HB3	1:C:535:GLU:CD	2.34	0.48
1:B:114:LEU:O	1:B:118:GLN:HG3	2.14	0.48
1:C:29:GLU:CD	1:C:29:GLU:H	2.17	0.48
1:A:72:GLN:HB2	1:A:78:TRP:CE2	2.49	0.48
1:A:237:ARG:O	1:A:241:GLU:HG3	2.13	0.48
1:A:471:ALA:O	1:A:474:TYR:HB3	2.13	0.48
1:B:558:TRP:HD1	1:B:561:MET:CE	2.27	0.48
1:C:394:ARG:HA	1:C:394:ARG:NH1	2.28	0.48
1:A:108:GLU:OE2	1:C:66:ARG:NH1	2.47	0.48
1:A:29:GLU:H	1:A:29:GLU:CD	2.17	0.47
1:B:53:LEU:O	1:B:55:ARG:HG3	2.14	0.47
1:C:461:TYR:N	1:C:461:TYR:CD1	2.82	0.47
1:A:86:PRO:HB2	1:A:116:PHE:CE2	2.50	0.47
1:A:246:ASP:HB2	4:A:2015:HOH:O	2.13	0.47
1:A:73:ARG:HD3	1:A:77:THR:O	2.15	0.47
1:A:88:LEU:O	1:A:92:ILE:HG13	2.14	0.47
1:B:106:ASP:O	1:B:111:GLN:HG2	2.14	0.47
1:A:374:ASP:OD1	1:A:377:ASP:OD2	2.32	0.47
1:B:548:LYS:HA	4:B:2049:HOH:O	2.14	0.47
1:A:238:ARG:CB	1:A:238:ARG:HH11	2.19	0.47
1:A:326:LEU:HD22	1:A:330:HIS:CD2	2.49	0.47
1:A:504:LEU:HA	1:A:507:VAL:HG22	1.97	0.47
1:A:558:TRP:HD1	1:A:561:MET:CE	2.28	0.47
1:B:52:ILE:HD12	1:B:187:PHE:CD2	2.50	0.47
1:B:492:ASN:HB3	1:B:535:GLU:CD	2.34	0.47
1:C:186:VAL:O	1:C:188:PRO:HD3	2.13	0.47
1:C:92:ILE:O	1:C:95:TYR:HB3	2.14	0.47
1:A:36:LEU:HA	4:A:2002:HOH:O	2.15	0.47
1:A:405:ARG:NH1	1:A:405:ARG:HG2	2.29	0.47
1:A:99:LYS:HD3	1:A:195:VAL:HG12	1.96	0.47
1:B:443:PRO:HG2	4:B:2040:HOH:O	2.15	0.47
1:B:576:ARG:NH1	4:B:2053:HOH:O	2.48	0.47
1:C:237:ARG:O	1:C:241:GLU:HG3	2.15	0.47
1:B:572:GLU:HG3	4:B:2053:HOH:O	2.15	0.47
1:B:15:LEU:O	1:B:19:VAL:HG23	2.15	0.46
1:B:366:GLN:HB2	4:B:2016:HOH:O	2.14	0.46

*Continued on next page...*



*Continued from previous page...*

Atom-1	Atom-2	Interatomic distance (Å)	Clash overlap (Å)
1:C:156:GLY:HA3	1:C:158:ARG:HH21	1.78	0.46
1:A:115:ARG:HH22	1:C:66:ARG:HH21	1.62	0.46
1:B:155:LEU:HB2	1:B:162:ASN:HA	1.96	0.46
1:B:425:THR:HG22	1:B:443:PRO:HB3	1.97	0.46
1:B:513:GLU:HB2	1:B:516:ILE:HG12	1.95	0.46
1:A:221:LEU:O	1:A:221:LEU:HD12	2.14	0.46
1:A:558:TRP:HA	1:A:561:MET:CE	2.46	0.46
1:B:99:LYS:NZ	1:B:197:GLU:OE2	2.45	0.46
1:C:435:CYS:CB	1:C:440:VAL:HG21	2.40	0.46
1:A:520:LEU:H	1:A:520:LEU:HD12	1.79	0.46
1:B:11:TYR:CD1	1:B:12:ALA:N	2.84	0.46
1:C:133:TRP:O	1:C:136:LEU:HB2	2.15	0.46
1:C:417:TRP:HE3	1:C:449:THR:HG23	1.79	0.46
1:C:607:LEU:HD11	3:C:800:R79:H5B1	1.97	0.46
1:B:575:ARG:HB2	1:B:575:ARG:HH11	1.81	0.46
1:C:558:TRP:HD1	1:C:561:MET:CE	2.29	0.46
1:B:96:VAL:HG21	1:B:134:LEU:HD21	1.97	0.46
1:C:26:GLN:HB2	1:C:32:TRP:CE2	2.51	0.46
1:A:88:LEU:HG	1:A:92:ILE:HD11	1.97	0.46
1:C:86:PRO:HB2	1:C:116:PHE:CZ	2.50	0.46
1:C:98:LEU:HB3	1:C:103:MET:HG3	1.98	0.46
1:A:428:LEU:N	1:A:429:PRO:HD2	2.31	0.46
1:A:435:CYS:CB	1:A:440:VAL:HG21	2.40	0.46
1:A:603:GLY:HA2	1:A:606:TYR:OH	2.15	0.46
1:A:617:PRO:O	1:A:621:LEU:HG	2.16	0.46
1:C:155:LEU:HB2	1:C:162:ASN:HA	1.98	0.46
1:C:425:THR:HG22	1:C:443:PRO:HB3	1.97	0.46
1:A:115:ARG:HG3	1:A:115:ARG:NH1	2.29	0.46
1:B:578:VAL:O	1:B:582:VAL:HG23	2.14	0.46
1:C:365:PHE:HB3	1:C:366:GLN:OE1	2.16	0.46
1:A:141:PRO:HA	4:A:2012:HOH:O	2.16	0.45
1:A:26:GLN:HB2	1:A:32:TRP:CZ2	2.51	0.45
1:A:332:ARG:HG2	1:A:332:ARG:HH11	1.80	0.45
1:A:52:ILE:HD12	1:A:187:PHE:CD2	2.51	0.45
1:B:92:ILE:O	1:B:95:TYR:HB3	2.16	0.45
1:C:15:LEU:O	1:C:19:VAL:HG23	2.17	0.45
1:C:52:ILE:HD12	1:C:187:PHE:CD2	2.50	0.45
1:A:150:PRO:HA	1:A:178:SER:HB2	1.99	0.45
1:C:428:LEU:N	1:C:429:PRO:HD2	2.32	0.45
1:B:494:LEU:HD22	1:B:559:ALA:HB2	1.98	0.45
1:A:452:VAL:HG12	1:A:456:PHE:CE2	2.51	0.45

*Continued on next page...*

*Continued from previous page...*

Atom-1	Atom-2	Interatomic distance (Å)	Clash overlap (Å)
1:B:262:GLN:HB3	1:B:263:PRO:HD3	1.96	0.45
1:A:505:LYS:HG2	1:A:511:THR:CG2	2.47	0.45
1:A:575:ARG:HB2	1:A:575:ARG:HH11	1.82	0.45
1:B:77:THR:OG1	1:B:86:PRO:HB3	2.16	0.45
1:C:527:GLN:HB2	1:C:533:TRP:CZ2	2.51	0.45
1:A:49:LEU:HD22	1:A:266:PHE:CD2	2.52	0.45
1:B:293:TYR:O	1:B:305:GLN:HG3	2.16	0.45
1:C:96:VAL:HG21	1:C:134:LEU:HD21	1.97	0.45
1:B:156:GLY:HA3	1:B:158:ARG:HH21	1.80	0.45
1:B:322:ARG:NH2	1:B:328:ALA:HB2	2.30	0.45
1:C:147:MET:HE1	1:C:181:MET:O	2.17	0.45
1:C:321:LEU:O	1:C:324:ALA:HB3	2.16	0.45
1:A:99:LYS:NZ	1:A:197:GLU:OE2	2.44	0.45
1:A:465:TRP:CZ2	1:A:467:VAL:HG21	2.52	0.45
1:A:586:ARG:HD3	1:A:592:ASP:OD2	2.17	0.45
1:A:554:SER:OG	1:A:597:THR:HG21	2.17	0.45
1:B:365:PHE:HB3	1:B:366:GLN:OE1	2.17	0.45
1:B:374:ASP:OD1	1:B:377:ASP:OD2	2.35	0.45
1:C:293:TYR:O	1:C:305:GLN:HG3	2.16	0.45
1:C:115:ARG:CB	1:C:115:ARG:HH11	2.30	0.45
1:A:201:THR:HG22	1:A:203:VAL:N	2.33	0.44
1:B:26:GLN:HB2	1:B:32:TRP:CZ2	2.52	0.44
1:B:623:ARG:O	1:B:626:GLN:HB2	2.16	0.44
1:A:228:TYR:HD1	1:A:231:LEU:HD12	1.82	0.44
1:A:46:TYR:CE1	1:A:50:CYS:SG	3.11	0.44
1:A:53:LEU:O	1:A:55:ARG:HG3	2.17	0.44
1:B:505:LYS:HG2	1:B:511:THR:CG2	2.48	0.44
1:C:262:GLN:HB3	1:C:263:PRO:HD3	1.99	0.44
1:C:127:ARG:CB	1:C:208:ARG:HH12	2.22	0.44
1:C:374:ASP:OD1	1:C:377:ASP:OD2	2.36	0.44
1:C:48:LEU:O	1:C:52:ILE:HG12	2.18	0.44
1:B:555:GLN:HA	1:B:558:TRP:CE3	2.53	0.44
1:B:99:LYS:HD3	1:B:195:VAL:HG12	1.99	0.44
1:C:88:LEU:O	1:C:92:ILE:HG13	2.18	0.44
1:C:15:LEU:HD21	1:C:621:LEU:HB2	2.00	0.44
1:C:504:LEU:HA	1:C:507:VAL:HG22	2.00	0.44
1:A:383:TRP:O	1:A:387:THR:HG23	2.18	0.44
1:A:17:ARG:HH12	1:B:529:PRO:HD3	1.82	0.44
1:C:623:ARG:O	1:C:626:GLN:HB2	2.18	0.44
1:C:66:ARG:HG2	1:C:66:ARG:HH11	1.83	0.44
1:A:542:ASP:OD2	1:A:544:ALA:HB3	2.17	0.43

*Continued on next page...*

*Continued from previous page...*

Atom-1	Atom-2	Interatomic distance (Å)	Clash overlap (Å)
1:C:422:VAL:HA	4:C:2044:HOH:O	2.18	0.43
1:C:471:ALA:O	1:C:474:TYR:HB3	2.17	0.43
1:A:11:TYR:HD1	1:A:12:ALA:N	2.16	0.43
1:B:332:ARG:NH1	1:B:332:ARG:HG2	2.33	0.43
1:C:99:LYS:NZ	1:C:197:GLU:OE2	2.45	0.43
1:A:555:GLN:HA	1:A:558:TRP:CE3	2.53	0.43
1:B:321:LEU:O	1:B:324:ALA:HB3	2.19	0.43
1:C:398:ASP:OD2	1:C:402:LYS:HE3	2.18	0.43
1:C:575:ARG:HB2	1:C:575:ARG:HH11	1.83	0.43
1:C:603:GLY:HA2	1:C:606:TYR:OH	2.18	0.43
1:A:155:LEU:HB2	1:A:162:ASN:HA	2.00	0.43
1:A:403:GLY:O	1:A:407:ILE:HG13	2.19	0.43
1:B:383:TRP:CZ3	1:B:454:GLU:HG2	2.54	0.43
1:C:505:LYS:HG2	1:C:511:THR:CG2	2.48	0.43
1:C:520:LEU:HD12	1:C:520:LEU:H	1.83	0.43
1:A:206:ARG:O	1:A:206:ARG:HG3	2.18	0.43
1:C:524:GLU:OE2	1:C:568:ARG:NH1	2.51	0.43
1:A:149:PRO:HA	1:A:150:PRO:HD3	1.79	0.43
1:A:148:VAL:HG11	1:A:174:VAL:HG13	2.00	0.43
1:C:124:GLU:HG2	4:C:2015:HOH:O	2.19	0.43
1:C:206:ARG:O	1:C:206:ARG:HG3	2.19	0.43
1:A:92:ILE:HG12	1:A:117:ILE:HD12	2.00	0.43
1:B:206:ARG:O	1:B:206:ARG:HG3	2.18	0.43
1:B:329:ASP:HB3	1:B:389:ARG:HB2	2.01	0.43
1:C:404:PHE:CD1	1:C:404:PHE:C	2.93	0.43
1:A:228:TYR:CD1	1:A:231:LEU:HD12	2.54	0.43
1:B:410:MET:O	1:B:422:VAL:HG22	2.19	0.43
1:B:428:LEU:N	1:B:429:PRO:HD2	2.34	0.43
1:C:149:PRO:HA	1:C:150:PRO:HD3	1.78	0.43
1:C:88:LEU:HG	1:C:92:ILE:HD11	2.01	0.43
1:B:150:PRO:HA	1:B:178:SER:HB2	2.00	0.42
1:B:201:THR:HG22	1:B:203:VAL:N	2.33	0.42
1:C:555:GLN:HA	1:C:558:TRP:CE3	2.53	0.42
1:C:617:PRO:O	1:C:621:LEU:HG	2.19	0.42
1:C:59:ASP:O	1:C:62:GLU:HB2	2.19	0.42
1:B:405:ARG:HG2	1:B:405:ARG:HH11	1.84	0.42
1:C:238:ARG:O	1:C:242:ILE:HG13	2.18	0.42
1:C:585:GLN:HG2	1:C:586:ARG:N	2.34	0.42
1:A:529:PRO:C	1:A:531:GLY:H	2.21	0.42
1:B:417:TRP:CE3	1:B:449:THR:HG23	2.51	0.42
1:B:560:LEU:HA	1:B:560:LEU:HD12	1.93	0.42

*Continued on next page...*

*Continued from previous page...*

Atom-1	Atom-2	Interatomic distance (Å)	Clash overlap (Å)
1:B:73:ARG:HH11	1:B:73:ARG:HG2	1.84	0.42
1:C:148:VAL:HG11	1:C:174:VAL:HG13	2.00	0.42
1:A:161:LEU:HD11	1:A:432:ILE:HD11	2.01	0.42
1:A:417:TRP:HE3	1:A:449:THR:HG23	1.84	0.42
1:B:149:PRO:HA	1:B:150:PRO:HD3	1.81	0.42
1:B:326:LEU:HD13	1:B:330:HIS:CD2	2.55	0.42
1:B:471:ALA:O	1:B:474:TYR:HB3	2.20	0.42
1:C:48:LEU:HD22	1:C:137:VAL:HG11	2.02	0.42
1:A:392:ASP:OD2	1:A:395:ARG:HB2	2.20	0.42
1:C:280:HIS:CE1	1:C:281:PRO:HD2	2.55	0.42
1:B:617:PRO:O	1:B:621:LEU:HG	2.20	0.42
1:A:234:HIS:HA	1:A:235:PRO:HD2	1.89	0.42
1:A:396:ARG:NH1	1:A:400:MET:CE	2.83	0.42
1:B:26:GLN:OE1	1:B:332:ARG:HG3	2.20	0.42
1:B:504:LEU:HA	1:B:507:VAL:HG22	2.01	0.42
1:A:92:ILE:HD12	1:A:126:SER:HB3	2.01	0.41
1:A:201:THR:HG22	1:A:203:VAL:H	1.84	0.41
1:A:359:LYS:HA	1:A:360:PRO:HD3	1.88	0.41
1:B:99:LYS:HB2	1:B:110:MET:CE	2.50	0.41
1:A:149:PRO:HD3	1:A:225:LEU:HD13	2.02	0.41
1:C:190:PRO:HB2	4:C:2019:HOH:O	2.20	0.41
1:A:150:PRO:HG2	1:A:182:SER:HB2	2.01	0.41
1:B:201:THR:HG22	1:B:203:VAL:H	1.85	0.41
1:B:256:GLY:O	1:B:286:GLY:HA2	2.20	0.41
1:B:310:PRO:HD2	1:B:366:GLN:HA	2.02	0.41
1:C:92:ILE:HD12	1:C:126:SER:HB3	2.02	0.41
1:C:150:PRO:HA	1:C:178:SER:HB2	2.01	0.41
1:C:221:LEU:O	1:C:224:ALA:HB3	2.20	0.41
1:C:529:PRO:C	1:C:531:GLY:H	2.23	0.41
1:A:262:GLN:HB3	1:A:263:PRO:HD3	2.02	0.41
1:A:355:ARG:N	1:A:356:PRO:HD3	2.36	0.41
1:B:114:LEU:HD11	1:B:197:GLU:HG3	2.03	0.41
1:B:235:PRO:O	1:B:236:PHE:HB2	2.21	0.41
1:B:553:PRO:HD2	1:B:593:GLU:HG3	2.01	0.41
1:C:533:TRP:O	1:C:551:SER:HA	2.20	0.41
1:B:148:VAL:HG11	1:B:174:VAL:HG13	2.03	0.41
1:C:26:GLN:HB2	1:C:32:TRP:CZ2	2.56	0.41
1:C:554:SER:OG	1:C:597:THR:HG21	2.21	0.41
1:A:20:GLU:HG3	1:A:21:TYR:N	2.34	0.41
1:A:280:HIS:ND1	1:A:281:PRO:HD2	2.36	0.41
1:A:558:TRP:HA	1:A:561:MET:HE2	2.02	0.41

*Continued on next page...*

*Continued from previous page...*

Atom-1	Atom-2	Interatomic distance (Å)	Clash overlap (Å)
1:B:366:GLN:H	1:B:366:GLN:CD	2.23	0.41
1:B:520:LEU:HD12	1:B:520:LEU:H	1.86	0.41
1:B:72:GLN:HB2	1:B:78:TRP:CZ2	2.55	0.41
1:C:201:THR:HG22	1:C:203:VAL:N	2.36	0.41
1:C:203:VAL:HG13	1:C:204:PRO:HD2	2.02	0.41
1:C:40:VAL:HG12	1:C:67:TYR:CE2	2.56	0.41
1:B:614:HIS:O	1:B:617:PRO:HD2	2.21	0.41
1:C:386:ASN:HA	1:C:396:ARG:HH12	1.86	0.41
1:C:106:ASP:O	1:C:111:GLN:HG2	2.21	0.41
1:C:186:VAL:C	1:C:188:PRO:HD3	2.40	0.41
1:A:13:ARG:NH1	1:A:13:ARG:HG2	2.35	0.41
1:B:186:VAL:C	1:B:188:PRO:HD3	2.40	0.41
1:C:114:LEU:O	1:C:118:GLN:HG3	2.21	0.41
1:C:476:LYS:HE2	1:C:515:TYR:CZ	2.55	0.41
1:C:60:ARG:NH1	1:C:60:ARG:HG2	2.36	0.41
1:C:271:ALA:O	1:C:275:LEU:HG	2.21	0.40
1:A:238:ARG:O	1:A:242:ILE:HG13	2.21	0.40
1:C:308:ILE:HG13	1:C:366:GLN:HB3	2.03	0.40
1:C:385:LEU:C	1:C:387:THR:H	2.23	0.40
1:A:314:THR:O	1:A:318:VAL:HG23	2.22	0.40
1:B:357:ASN:N	1:B:357:ASN:HD22	2.19	0.40
1:B:49:LEU:HD11	1:B:53:LEU:HD11	2.04	0.40
1:C:357:ASN:HD22	1:C:357:ASN:N	2.19	0.40
1:C:161:LEU:HD11	1:C:432:ILE:HD11	2.03	0.40
1:C:310:PRO:HD2	1:C:366:GLN:HA	2.02	0.40
1:A:404:PHE:O	1:A:408:VAL:HG23	2.22	0.40
1:A:40:VAL:HG12	1:A:67:TYR:CE2	2.55	0.40
1:B:461:TYR:N	1:B:461:TYR:CD1	2.89	0.40
1:B:46:TYR:CE1	1:B:50:CYS:SG	3.15	0.40
1:B:73:ARG:NH1	1:B:73:ARG:HG2	2.36	0.40
1:C:93:GLU:HG3	1:C:130:THR:HG23	2.04	0.40

There are no symmetry-related clashes.

## 5.3 Torsion angles [i](#)

### 5.3.1 Protein backbone [i](#)

In the following table, the Percentiles column shows the percent Ramachandran outliers of the chain as a percentile score with respect to all X-ray entries followed by that with respect to entries of similar resolution.

The Analysed column shows the number of residues for which the backbone conformation was analysed, and the total number of residues.

Mol	Chain	Analysed	Favoured	Allowed	Outliers	Percentiles	
1	A	618/631 (98%)	553 (90%)	59 (10%)	6 (1%)	17	49
1	B	618/631 (98%)	552 (89%)	61 (10%)	5 (1%)	21	54
1	C	618/631 (98%)	555 (90%)	57 (9%)	6 (1%)	17	49
All	All	1854/1893 (98%)	1660 (90%)	177 (10%)	17 (1%)	19	52

All (17) Ramachandran outliers are listed below:

Mol	Chain	Res	Type
1	A	200	GLU
1	A	263	PRO
1	B	200	GLU
1	B	263	PRO
1	C	200	GLU
1	C	263	PRO
1	A	361	GLY
1	B	361	GLY
1	C	361	GLY
1	A	163	ILE
1	A	492	ASN
1	B	492	ASN
1	C	105	ARG
1	C	492	ASN
1	C	163	ILE
1	B	163	ILE
1	A	284	ILE

### 5.3.2 Protein sidechains ⓘ

In the following table, the Percentiles column shows the percent sidechain outliers of the chain as a percentile score with respect to all X-ray entries followed by that with respect to entries of similar resolution.

The Analysed column shows the number of residues for which the sidechain conformation was analysed, and the total number of residues.

Mol	Chain	Analysed	Rotameric	Outliers	Percentiles	
1	A	503/513 (98%)	490 (97%)	13 (3%)	49	81
1	B	503/513 (98%)	493 (98%)	10 (2%)	58	85

*Continued on next page...*

*Continued from previous page...*

Mol	Chain	Analysed	Rotameric	Outliers	Percentiles	
1	C	503/513 (98%)	491 (98%)	12 (2%)	52	82
All	All	1509/1539 (98%)	1474 (98%)	35 (2%)	53	83

All (35) residues with a non-rotameric sidechain are listed below:

Mol	Chain	Res	Type
1	A	15	LEU
1	A	37	LEU
1	A	69	LEU
1	A	158	ARG
1	A	238	ARG
1	A	251	ARG
1	A	366	GLN
1	A	376	ASP
1	A	401	THR
1	A	404	PHE
1	A	428	LEU
1	A	485	TRP
1	A	591	TRP
1	B	37	LEU
1	B	73	ARG
1	B	114	LEU
1	B	115	ARG
1	B	158	ARG
1	B	238	ARG
1	B	366	GLN
1	B	428	LEU
1	B	485	TRP
1	B	591	TRP
1	C	37	LEU
1	C	73	ARG
1	C	114	LEU
1	C	115	ARG
1	C	158	ARG
1	C	238	ARG
1	C	279	GLN
1	C	366	GLN
1	C	428	LEU
1	C	461	TYR
1	C	485	TRP
1	C	591	TRP

Some sidechains can be flipped to improve hydrogen bonding and reduce clashes. All (13) such sidechains are listed below:

Mol	Chain	Res	Type
1	A	118	GLN
1	A	226	HIS
1	A	357	ASN
1	B	70	HIS
1	B	118	GLN
1	B	279	GLN
1	B	357	ASN
1	B	579	GLN
1	C	118	GLN
1	C	279	GLN
1	C	357	ASN
1	C	386	ASN
1	C	579	GLN

### 5.3.3 RNA [i](#)

There are no RNA molecules in this entry.

## 5.4 Non-standard residues in protein, DNA, RNA chains [i](#)

There are no non-standard protein/DNA/RNA residues in this entry.

## 5.5 Carbohydrates [i](#)

There are no carbohydrates in this entry.

## 5.6 Ligand geometry [i](#)

6 ligands are modelled in this entry.

In the following table, the Counts columns list the number of bonds (or angles) for which Mogul statistics could be retrieved, the number of bonds (or angles) that are observed in the model and the number of bonds (or angles) that are defined in the Chemical Component Dictionary. The Link column lists molecule types, if any, to which the group is linked. The Z score for a bond length (or angle) is the number of standard deviations the observed value is removed from the expected value. A bond length (or angle) with  $|Z| > 2$  is considered an outlier worth inspection. RMSZ is the root-mean-square of all Z scores of the bond lengths (or angles).



Mol	Type	Chain	Res	Link	Bond lengths			Bond angles		
					Counts	RMSZ	# Z  > 2	Counts	RMSZ	# Z  > 2
2	C8E	A	700	-	20,20,20	0.77	0	19,19,19	1.75	5 (26%)
3	R79	A	800	-	26,30,30	1.93	8 (30%)	30,39,39	2.14	2 (6%)
2	C8E	B	700	-	20,20,20	0.78	0	19,19,19	1.74	5 (26%)
3	R79	B	800	-	26,30,30	1.94	8 (30%)	30,39,39	2.07	1 (3%)
2	C8E	C	700	-	20,20,20	0.77	0	19,19,19	1.74	5 (26%)
3	R79	C	800	-	26,30,30	2.02	8 (30%)	30,39,39	2.07	1 (3%)

In the following table, the Chirals column lists the number of chiral outliers, the number of chiral centers analysed, the number of these observed in the model and the number defined in the Chemical Component Dictionary. Similar counts are reported in the Torsion and Rings columns. '-' means no outliers of that kind were identified.

Mol	Type	Chain	Res	Link	Chirals	Torsions	Rings
2	C8E	A	700	-	-	0/18/18/18	0/0/0/0
3	R79	A	800	-	-	0/17/17/17	0/3/3/3
2	C8E	B	700	-	-	0/18/18/18	0/0/0/0
3	R79	B	800	-	-	0/17/17/17	0/3/3/3
2	C8E	C	700	-	-	0/18/18/18	0/0/0/0
3	R79	C	800	-	-	0/17/17/17	0/3/3/3

All (24) bond length outliers are listed below:

Mol	Chain	Res	Type	Atoms	Z	Observed(Å)	Ideal(Å)
3	A	800	R79	C5D-C4D	2.18	1.42	1.38
3	C	800	R79	C3D-C4D	2.21	1.42	1.38
3	A	800	R79	C7C-C7P	2.23	1.41	1.37
3	B	800	R79	C3D-C4D	2.26	1.43	1.38
3	B	800	R79	C5D-C4D	2.33	1.43	1.38
3	A	800	R79	C3D-C4D	2.33	1.43	1.38
3	B	800	R79	C7C-C7P	2.43	1.42	1.37
3	C	800	R79	C5D-C4D	2.49	1.43	1.38
3	B	800	R79	C1D-C3C	2.49	1.52	1.49
3	C	800	R79	C7C-C7P	2.66	1.42	1.37
3	B	800	R79	C2D-C1D	2.75	1.45	1.39
3	A	800	R79	C2D-C1D	2.78	1.45	1.39
3	C	800	R79	C2D-C1D	2.88	1.45	1.39
3	A	800	R79	C1D-C3C	3.03	1.53	1.49
3	A	800	R79	C5D-C6D	3.09	1.44	1.38
3	C	800	R79	C1D-C3C	3.16	1.53	1.49
3	C	800	R79	C5D-C6D	3.31	1.44	1.38
3	B	800	R79	C5D-C6D	3.42	1.44	1.38

Continued on next page...

*Continued from previous page...*

Mol	Chain	Res	Type	Atoms	Z	Observed(Å)	Ideal(Å)
3	A	800	R79	C2D-C3D	3.84	1.45	1.38
3	C	800	R79	C2D-C3D	3.89	1.45	1.38
3	B	800	R79	C2D-C3D	3.95	1.45	1.38
3	A	800	R79	C7C-C6C	4.21	1.44	1.37
3	B	800	R79	C7C-C6C	4.39	1.45	1.37
3	C	800	R79	C7C-C6C	4.39	1.45	1.37

All (19) bond angle outliers are listed below:

Mol	Chain	Res	Type	Atoms	Z	Observed(°)	Ideal(°)
2	C	700	C8E	C19-O18-C17	-2.61	101.84	113.30
2	B	700	C8E	C19-O18-C17	-2.61	101.87	113.30
2	A	700	C8E	C19-O18-C17	-2.60	101.90	113.30
3	A	800	R79	C6C-C7C-C7P	-2.25	117.45	119.07
2	A	700	C8E	C16-O15-C14	-2.10	104.10	113.30
2	C	700	C8E	C16-O15-C14	-2.09	104.13	113.30
2	B	700	C8E	C16-O15-C14	-2.05	104.31	113.30
2	C	700	C8E	O18-C19-C20	2.65	121.97	110.10
2	B	700	C8E	O18-C19-C20	2.67	122.07	110.10
2	A	700	C8E	O18-C19-C20	2.72	122.27	110.10
2	C	700	C8E	O15-C16-C17	2.81	123.35	110.37
2	A	700	C8E	O15-C16-C17	2.85	123.54	110.37
2	B	700	C8E	O15-C16-C17	2.88	123.66	110.37
2	C	700	C8E	O15-C14-C13	4.48	131.07	110.37
2	B	700	C8E	O15-C14-C13	4.49	131.09	110.37
2	A	700	C8E	O15-C14-C13	4.50	131.14	110.37
3	B	800	R79	C3C-N2C-S1C	10.10	119.69	104.81
3	C	800	R79	C3C-N2C-S1C	10.16	119.77	104.81
3	A	800	R79	C3C-N2C-S1C	10.35	120.06	104.81

There are no chirality outliers.

There are no torsion outliers.

There are no ring outliers.

2 monomers are involved in 3 short contacts:

Mol	Chain	Res	Type	Clashes	Symm-Clashes
2	A	700	C8E	2	0
3	C	800	R79	1	0

## 5.7 Other polymers [i](#)

There are no such residues in this entry.

## 5.8 Polymer linkage issues [i](#)

There are no chain breaks in this entry.

## 6 Fit of model and data [i](#)

### 6.1 Protein, DNA and RNA chains [i](#)

In the following table, the column labelled ‘#RSRZ> 2’ contains the number (and percentage) of RSRZ outliers, followed by percent RSRZ outliers for the chain as percentile scores relative to all X-ray entries and entries of similar resolution. The OWAB column contains the minimum, median, 95<sup>th</sup> percentile and maximum values of the occupancy-weighted average B-factor per residue. The column labelled ‘Q< 0.9’ lists the number of (and percentage) of residues with an average occupancy less than 0.9.

Mol	Chain	Analysed	<RSRZ>	#RSRZ>2	OWAB(Å <sup>2</sup> )	Q<0.9
1	A	620/631 (98%)	-0.75	1 (0%) 94 95	6, 36, 85, 99	0
1	B	620/631 (98%)	-0.80	1 (0%) 94 95	6, 22, 68, 99	0
1	C	620/631 (98%)	-0.77	0 100 100	6, 28, 78, 99	0
All	All	1860/1893 (98%)	-0.77	2 (0%) 95 96	6, 28, 79, 99	0

All (2) RSRZ outliers are listed below:

Mol	Chain	Res	Type	RSRZ
1	B	207	ARG	2.3
1	A	212	GLY	2.2

### 6.2 Non-standard residues in protein, DNA, RNA chains [i](#)

There are no non-standard protein/DNA/RNA residues in this entry.

### 6.3 Carbohydrates [i](#)

There are no carbohydrates in this entry.

### 6.4 Ligands [i](#)

In the following table, the Atoms column lists the number of modelled atoms in the group and the number defined in the chemical component dictionary. The B-factors column lists the minimum, median, 95<sup>th</sup> percentile and maximum values of B factors of atoms in the group. The column labelled ‘Q< 0.9’ lists the number of atoms with occupancy less than 0.9.

Mol	Type	Chain	Res	Atoms	RSCC	RSR	B-factors(Å <sup>2</sup> )	Q<0.9
2	C8E	C	700	21/21	0.80	0.48	93,93,93,93	0

*Continued on next page...*

*Continued from previous page...*

Mol	Type	Chain	Res	Atoms	RSCC	RSR	B-factors( $\text{\AA}^2$ )	Q<0.9
2	C8E	B	700	21/21	0.82	0.45	81,81,81,81	0
2	C8E	A	700	21/21	0.88	0.36	73,73,73,73	0
3	R79	A	800	28/28	0.94	0.20	16,40,62,62	0
3	R79	B	800	28/28	0.96	0.16	6,30,48,48	0
3	R79	C	800	28/28	0.97	0.14	12,31,45,45	0

## 6.5 Other polymers [i](#)

There are no such residues in this entry.