



Full wwPDB X-ray Structure Validation Report ⓘ

Jul 15, 2019 – 08:02 PM EDT

PDB ID : 1HF6
Title : ENDOGLUCANASE CEL5A FROM BACILLUS AGARADHAERENS IN THE ORTHORHOMBIC CRYSTAL FORM IN COMPLEX WITH CEL-LOTRIOSE
Authors : Varrot, A.; Withers, S.; Vasella, A.; Schulein, M.; Davies, G.J.
Deposited on : 2000-11-29
Resolution : 1.15 Å(reported)

This is a Full wwPDB X-ray Structure Validation Report for a publicly released PDB entry.

We welcome your comments at validation@mail.wwpdb.org

A user guide is available at

<https://www.wwpdb.org/validation/2017/XrayValidationReportHelp>

with specific help available everywhere you see the ⓘ symbol.

The following versions of software and data (see [references ⓘ](#)) were used in the production of this report:

MolProbity : 4.02b-467
Mogul : 1.8.0 (224370), CSD as540be (2019)
Xtriage (Phenix) : 1.13
EDS : 2.3.2
buster-report : 1.1.7 (2018)
Percentile statistics : 20171227.v01 (using entries in the PDB archive December 27th 2017)
Refmac : 5.8.0158
CCP4 : 7.0 (Gargrove)
Ideal geometry (proteins) : Engh & Huber (2001)
Ideal geometry (DNA, RNA) : Parkinson et al. (1996)
Validation Pipeline (wwPDB-VP) : 2.3.2

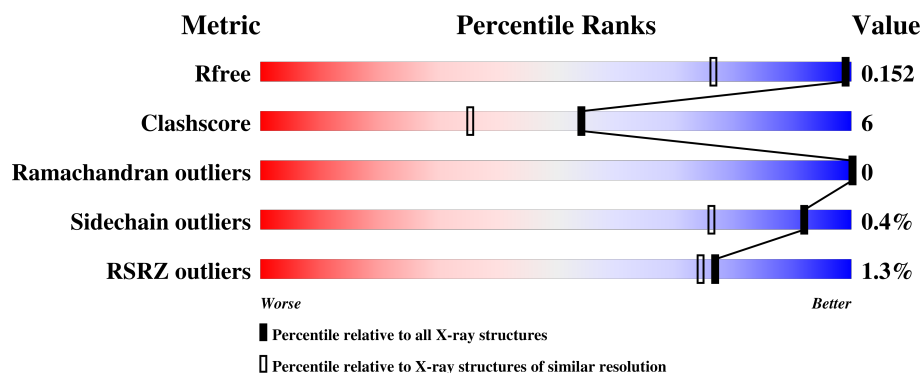
1 Overall quality at a glance

The following experimental techniques were used to determine the structure:

X-RAY DIFFRACTION

The reported resolution of this entry is 1.15 Å.

Percentile scores (ranging between 0-100) for global validation metrics of the entry are shown in the following graphic. The table shows the number of entries on which the scores are based.



Metric	Whole archive (#Entries)	Similar resolution (#Entries, resolution range(Å))
R_{free}	111664	1223 (1.18-1.10)
Clashscore	122126	1264 (1.18-1.10)
Ramachandran outliers	120053	1215 (1.18-1.10)
Sidechain outliers	120020	1212 (1.18-1.10)
RSRZ outliers	108989	1199 (1.18-1.10)

The table below summarises the geometric issues observed across the polymeric chains and their fit to the electron density. The red, orange, yellow and green segments on the lower bar indicate the fraction of residues that contain outliers for ≥ 3 , 2, 1 and 0 types of geometric quality criteria. A grey segment represents the fraction of residues that are not modelled. The numeric value for each fraction is indicated below the corresponding segment, with a dot representing fractions $\leq 5\%$. The upper red bar (where present) indicates the fraction of residues that have poor fit to the electron density. The numeric value is given above the bar.

Mol	Chain	Length	Quality of chain
1	A	303	<div> <div></div> <div>86%</div> <div>12%</div> <div>..</div> </div>

2 Entry composition [i](#)

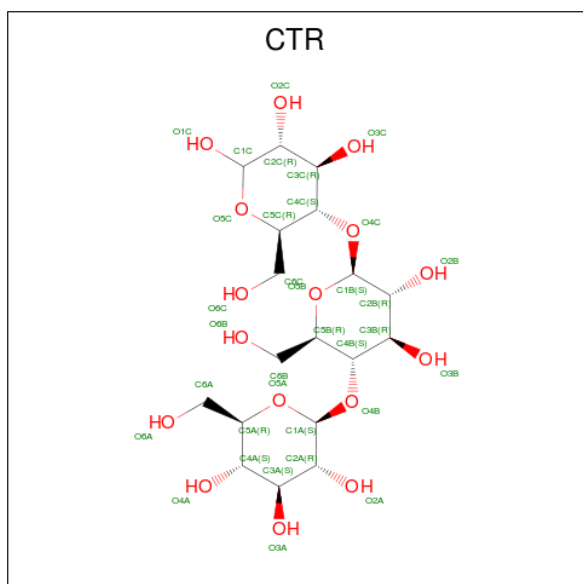
There are 6 unique types of molecules in this entry. The entry contains 3007 atoms, of which 0 are hydrogens and 0 are deuteriums.

In the tables below, the ZeroOcc column contains the number of atoms modelled with zero occupancy, the AltConf column contains the number of residues with at least one atom in alternate conformation and the Trace column contains the number of residues modelled with at most 2 atoms.

- Molecule 1 is a protein called ENDOGLUCANASE B.

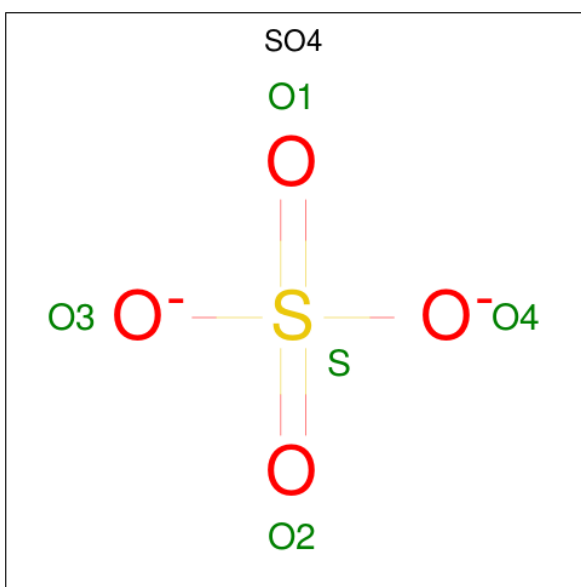
Mol	Chain	Residues	Atoms					ZeroOcc	AltConf	Trace
			Total	C	N	O	S			
1	A	300	2483	1571	405	498	9	0	26	0

- Molecule 2 is CELLOTRIOSE (three-letter code: CTR) (formula: $C_{18}H_{32}O_{16}$).



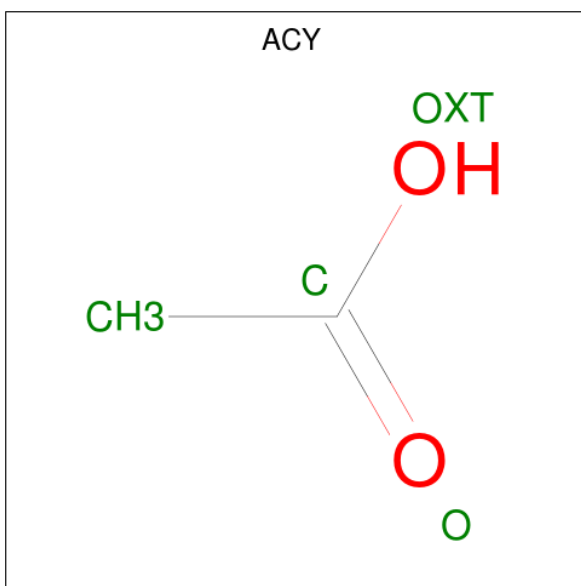
Mol	Chain	Residues	Atoms			ZeroOcc	AltConf
			Total	C	O		
2	A	1	32	17	15	0	0

- Molecule 3 is SULFATE ION (three-letter code: SO4) (formula: O_4S).



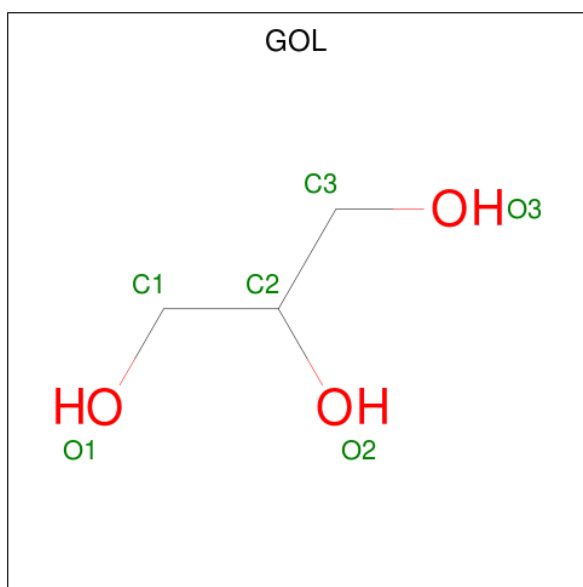
Mol	Chain	Residues	Atoms			ZeroOcc	AltConf
3	A	1	Total	O	S	0	0
			5	4	1		

- Molecule 4 is ACETIC ACID (three-letter code: ACY) (formula: C₂H₄O₂).



Mol	Chain	Residues	Atoms			ZeroOcc	AltConf
4	A	1	Total	C	O	0	0
			4	2	2		

- Molecule 5 is GLYCEROL (three-letter code: GOL) (formula: C₃H₈O₃).



Mol	Chain	Residues	Atoms			ZeroOcc	AltConf
5	A	1	Total	C	O	0	0
			6	3	3		
5	A	1	Total	C	O	0	0
			6	3	3		

- Molecule 6 is water.

Mol	Chain	Residues	Atoms		ZeroOcc	AltConf
6	A	471	Total	O	0	96
			471	471		

- Molecule 1: ENDOGLUCANASE B



4 Data and refinement statistics

Property	Value	Source
Space group	P 21 21 21	Depositor
Cell constants a, b, c, α , β , γ	54.60Å 69.45Å 77.13Å 90.00° 90.00° 90.00°	Depositor
Resolution (Å)	20.00 – 1.15 19.85 – 1.15	Depositor EDS
% Data completeness (in resolution range)	98.9 (20.00-1.15) 98.9 (19.85-1.15)	Depositor EDS
R_{merge}	0.05	Depositor
R_{sym}	0.05	Depositor
$\langle I/\sigma(I) \rangle$ ¹	3.82 (at 1.15Å)	Xtriage
Refinement program	REFMAC 5.0	Depositor
R, R_{free}	0.114 , 0.137 0.130 , 0.152	Depositor DCC
R_{free} test set	5175 reflections (5.00%)	wwPDB-VP
Wilson B-factor (Å ²)	8.5	Xtriage
Anisotropy	0.711	Xtriage
Bulk solvent k_{sol} (e/Å ³), B_{sol} (Å ²)	0.38 , 51.5	EDS
L-test for twinning ²	$\langle L \rangle = 0.50$, $\langle L^2 \rangle = 0.34$	Xtriage
Estimated twinning fraction	No twinning to report.	Xtriage
F_o, F_c correlation	0.98	EDS
Total number of atoms	3007	wwPDB-VP
Average B, all atoms (Å ²)	12.0	wwPDB-VP

Xtriage's analysis on translational NCS is as follows: *The largest off-origin peak in the Patterson function is 5.95% of the height of the origin peak. No significant pseudotranslation is detected.*

¹Intensities estimated from amplitudes.

²Theoretical values of $\langle |L| \rangle$, $\langle L^2 \rangle$ for acentric reflections are 0.5, 0.333 respectively for untwinned datasets, and 0.375, 0.2 for perfectly twinned datasets.

5 Model quality [i](#)

5.1 Standard geometry [i](#)

Bond lengths and bond angles in the following residue types are not validated in this section: GOL, ACY, SO4, CTR

The Z score for a bond length (or angle) is the number of standard deviations the observed value is removed from the expected value. A bond length (or angle) with $|Z| > 5$ is considered an outlier worth inspection. RMSZ is the root-mean-square of all Z scores of the bond lengths (or angles).

Mol	Chain	Bond lengths		Bond angles	
		RMSZ	$\# Z > 5$	RMSZ	$\# Z > 5$
1	A	1.10	13/2646 (0.5%)	1.05	13/3594 (0.4%)

Chiral center outliers are detected by calculating the chiral volume of a chiral center and verifying if the center is modelled as a planar moiety or with the opposite hand. A planarity outlier is detected by checking planarity of atoms in a peptide group, atoms in a mainchain group or atoms of a sidechain that are expected to be planar.

Mol	Chain	#Chirality outliers	#Planarity outliers
1	A	0	1

All (13) bond length outliers are listed below:

Mol	Chain	Res	Type	Atoms	Z	Observed(Å)	Ideal(Å)
1	A	78	VAL	CB-CG2	-8.61	1.34	1.52
1	A	124[A]	GLU	CD-OE1	-8.00	1.16	1.25
1	A	124[B]	GLU	CD-OE1	-8.00	1.16	1.25
1	A	302	GLU	CD-OE2	-7.61	1.17	1.25
1	A	255	ARG	CG-CD	-6.14	1.36	1.51
1	A	228	GLU	CD-OE2	5.92	1.32	1.25
1	A	240[A]	VAL	CB-CG1	-5.89	1.40	1.52
1	A	240[B]	VAL	CB-CG1	-5.89	1.40	1.52
1	A	114	GLU	CD-OE2	5.62	1.31	1.25
1	A	111	TYR	CG-CD2	-5.61	1.31	1.39
1	A	255	ARG	CZ-NH2	-5.28	1.26	1.33
1	A	157	GLU	CD-OE2	-5.09	1.20	1.25
1	A	111	TYR	CE1-CZ	-5.05	1.31	1.38

All (13) bond angle outliers are listed below:

Mol	Chain	Res	Type	Atoms	Z	Observed(°)	Ideal(°)
1	A	144	ASP	CB-CG-OD1	9.98	127.28	118.30
1	A	240[A]	VAL	CG1-CB-CG2	-7.34	99.15	110.90
1	A	240[B]	VAL	CG1-CB-CG2	-7.34	99.15	110.90
1	A	157	GLU	OE1-CD-OE2	7.14	131.87	123.30
1	A	120	ASP	CB-CG-OD1	7.10	124.69	118.30
1	A	99	ASP	CB-CG-OD2	-6.74	112.23	118.30
1	A	74	ASP	CB-CG-OD1	-6.23	112.69	118.30
1	A	181	ASP	CB-CG-OD1	6.12	123.81	118.30
1	A	74	ASP	CB-CG-OD2	6.04	123.74	118.30
1	A	297	ARG	NE-CZ-NH2	-5.87	117.36	120.30
1	A	55	ASP	CB-CG-OD2	5.20	122.98	118.30
1	A	107	ASP	CB-CG-OD1	5.06	122.85	118.30
1	A	99	ASP	CB-CG-OD1	5.04	122.84	118.30

There are no chirality outliers.

All (1) planarity outliers are listed below:

Mol	Chain	Res	Type	Group
1	A	62	ARG	Sidechain

5.2 Too-close contacts ⓘ

In the following table, the Non-H and H(model) columns list the number of non-hydrogen atoms and hydrogen atoms in the chain respectively. The H(added) column lists the number of hydrogen atoms added and optimized by MolProbity. The Clashes column lists the number of clashes within the asymmetric unit, whereas Symm-Clashes lists symmetry related clashes.

Mol	Chain	Non-H	H(model)	H(added)	Clashes	Symm-Clashes
1	A	2483	0	2305	27	0
2	A	32	0	28	1	0
3	A	5	0	0	0	0
4	A	4	0	3	0	0
5	A	12	0	16	0	0
6	A	471	0	0	13	0
All	All	3007	0	2352	28	0

The all-atom clashscore is defined as the number of clashes found per 1000 atoms (including hydrogen atoms). The all-atom clashscore for this structure is 6.

All (28) close contacts within the same asymmetric unit are listed below, sorted by their clash magnitude.

Atom-1	Atom-2	Interatomic distance (Å)	Clash overlap (Å)
1:A:202:TYR:CZ	6:A:2340[A]:HOH:O	1.73	1.25
1:A:202:TYR:CE2	6:A:2340[A]:HOH:O	1.69	1.25
1:A:202:TYR:OH	6:A:2340[A]:HOH:O	1.54	1.19
1:A:202:TYR:HE1	6:A:2373[A]:HOH:O	1.23	1.18
1:A:144:ASP:OD2	6:A:2267[A]:HOH:O	1.64	1.12
1:A:81[A]:LYS:NZ	6:A:2166[A]:HOH:O	1.80	0.85
1:A:298[A]:GLU:CD	6:A:2452[A]:HOH:O	2.33	0.67
1:A:144:ASP:CG	6:A:2267[A]:HOH:O	2.23	0.63
1:A:298[A]:GLU:OE2	6:A:2452[A]:HOH:O	2.16	0.62
1:A:125[B]:LEU:HD23	1:A:126:TYR:CE2	2.36	0.61
1:A:79[B]:LYS:HG3	1:A:122[B]:MET:HE2	1.85	0.59
1:A:79[B]:LYS:HG3	1:A:122[B]:MET:CE	2.34	0.58
1:A:202:TYR:HE2	6:A:2340[A]:HOH:O	1.36	0.56
1:A:81[A]:LYS:CE	6:A:2166[A]:HOH:O	2.47	0.52
1:A:240[A]:VAL:HG12	1:A:242:LEU:HG	1.93	0.51
1:A:125[B]:LEU:HD23	1:A:126:TYR:CZ	2.46	0.51
2:A:500:CTR:C2C	2:A:500:CTR:O5C	2.58	0.51
1:A:202:TYR:CE1	6:A:2373[A]:HOH:O	2.13	0.48
1:A:240[B]:VAL:HG12	1:A:270[B]:SER:HB2	1.95	0.47
1:A:278[B]:ALA:HA	1:A:288[B]:GLU:OE2	2.16	0.45
1:A:192:ASP:HB3	1:A:195[B]:VAL:HG13	1.98	0.45
1:A:192:ASP:HB3	1:A:195[B]:VAL:CG1	2.47	0.44
1:A:66:TYR:HA	1:A:101:HIS:HB3	1.99	0.44
1:A:79[B]:LYS:HE3	1:A:79[B]:LYS:HB3	1.80	0.43
1:A:23[A]:ARG:HG3	6:A:2011[A]:HOH:O	2.19	0.42
1:A:152:LYS:HB3	1:A:153:PRO:HD3	2.03	0.41
1:A:266:HIS:CD2	1:A:266:HIS:C	2.93	0.41

There are no symmetry-related clashes.

5.3 Torsion angles [i](#)

5.3.1 Protein backbone [i](#)

In the following table, the Percentiles column shows the percent Ramachandran outliers of the chain as a percentile score with respect to all X-ray entries followed by that with respect to entries of similar resolution.

The Analysed column shows the number of residues for which the backbone conformation was analysed, and the total number of residues.

Mol	Chain	Analysed	Favoured	Allowed	Outliers	Percentiles	
1	A	323/303 (107%)	313 (97%)	10 (3%)	0	100	100

There are no Ramachandran outliers to report.

5.3.2 Protein sidechains [i](#)

In the following table, the Percentiles column shows the percent sidechain outliers of the chain as a percentile score with respect to all X-ray entries followed by that with respect to entries of similar resolution.

The Analysed column shows the number of residues for which the sidechain conformation was analysed, and the total number of residues.

Mol	Chain	Analysed	Rotameric	Outliers	Percentiles	
1	A	275/254 (108%)	274 (100%)	1 (0%)	92	76

All (1) residues with a non-rotameric sidechain are listed below:

Mol	Chain	Res	Type
1	A	266	HIS

Some sidechains can be flipped to improve hydrogen bonding and reduce clashes. There are no such sidechains identified.

5.3.3 RNA [i](#)

There are no RNA molecules in this entry.

5.4 Non-standard residues in protein, DNA, RNA chains [i](#)

There are no non-standard protein/DNA/RNA residues in this entry.

5.5 Carbohydrates [i](#)

There are no carbohydrates in this entry.

5.6 Ligand geometry [i](#)

5 ligands are modelled in this entry.

In the following table, the Counts columns list the number of bonds (or angles) for which Mogul statistics could be retrieved, the number of bonds (or angles) that are observed in the model and the number of bonds (or angles) that are defined in the Chemical Component Dictionary. The Link column lists molecule types, if any, to which the group is linked. The Z score for a bond length (or angle) is the number of standard deviations the observed value is removed from the expected value. A bond length (or angle) with $|Z| > 2$ is considered an outlier worth inspection. RMSZ is the root-mean-square of all Z scores of the bond lengths (or angles).

Mol	Type	Chain	Res	Link	Bond lengths			Bond angles		
					Counts	RMSZ	$\# Z > 2$	Counts	RMSZ	$\# Z > 2$
2	CTR	A	500	-	33,33,36	1.01	2 (6%)	47,47,53	1.35	7 (14%)
3	SO4	A	501	-	4,4,4	0.84	0	6,6,6	0.51	0
4	ACY	A	502	-	1,3,3	0.26	0	0,3,3	0.00	-
5	GOL	A	503	-	5,5,5	0.38	0	5,5,5	0.67	0
5	GOL	A	504	-	5,5,5	0.63	0	5,5,5	0.80	0

In the following table, the Chirals column lists the number of chiral outliers, the number of chiral centers analysed, the number of these observed in the model and the number defined in the Chemical Component Dictionary. Similar counts are reported in the Torsion and Rings columns. '-' means no outliers of that kind were identified.

Mol	Type	Chain	Res	Link	Chirals	Torsions	Rings
2	CTR	A	500	-	-	2/24/64/74	0/2/2/3
5	GOL	A	503	-	-	0/4/4/4	-
5	GOL	A	504	-	-	0/4/4/4	-

All (2) bond length outliers are listed below:

Mol	Chain	Res	Type	Atoms	Z	Observed(Å)	Ideal(Å)
2	A	500	CTR	O4C-C4C	-3.04	1.35	1.43
2	A	500	CTR	O2C-C2C	-2.63	1.31	1.42

All (7) bond angle outliers are listed below:

Mol	Chain	Res	Type	Atoms	Z	Observed(°)	Ideal(°)
2	A	500	CTR	O4C-C4C-C3C	3.21	112.40	107.98
2	A	500	CTR	O5C-C5C-C6C	-2.97	102.12	109.14
2	A	500	CTR	O5A-C1A-C2A	-2.78	104.42	110.35
2	A	500	CTR	C6C-C5C-C4C	2.53	117.23	112.10
2	A	500	CTR	C1A-O4B-C4B	-2.26	112.32	117.97
2	A	500	CTR	O5B-C1B-C2B	-2.17	105.71	110.35
2	A	500	CTR	O4C-C4C-C5C	-2.12	105.05	107.98

There are no chirality outliers.

All (2) torsion outliers are listed below:

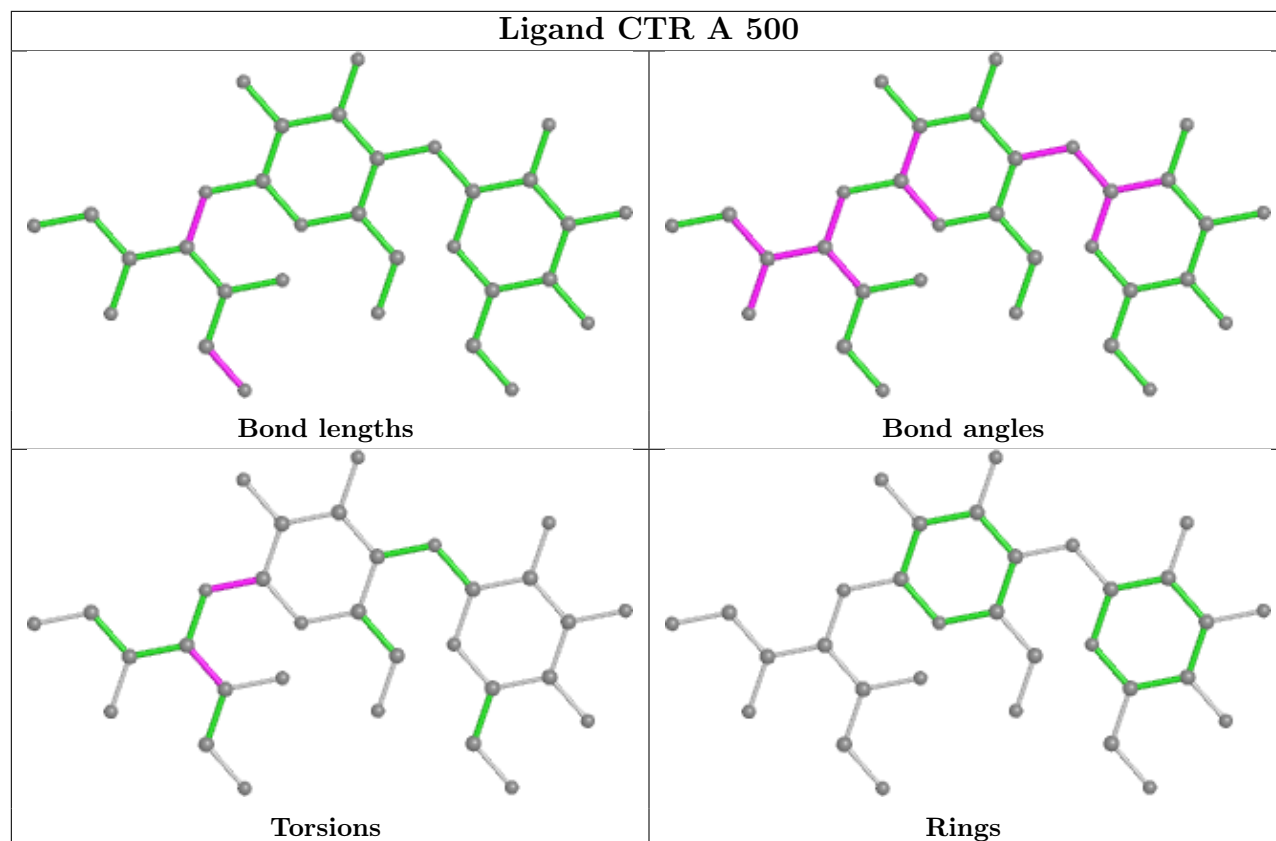
Mol	Chain	Res	Type	Atoms
2	A	500	CTR	C2C-C3C-C4C-O4C
2	A	500	CTR	C2B-C1B-O4C-C4C

There are no ring outliers.

1 monomer is involved in 1 short contact:

Mol	Chain	Res	Type	Clashes	Symm-Clashes
2	A	500	CTR	1	0

The following is a two-dimensional graphical depiction of Mogul quality analysis of bond lengths, bond angles, torsion angles, and ring geometry for all instances of the Ligand of Interest. In addition, ligands with molecular weight > 250 and outliers as shown on the validation Tables will also be included. For torsion angles, if less than 5% of the Mogul distribution of torsion angles is within 10 degrees of the torsion angle in question, then that torsion angle is considered an outlier. Any bond that is central to one or more torsion angles identified as an outlier by Mogul will be highlighted in the graph. For rings, the root-mean-square deviation (RMSD) between the ring in question and similar rings identified by Mogul is calculated over all ring torsion angles. If the average RMSD is greater than 60 degrees and the minimal RMSD between the ring in question and any Mogul-identified rings is also greater than 60 degrees, then that ring is considered an outlier. The outliers are highlighted in purple. The color gray indicates Mogul did not find sufficient equivalents in the CSD to analyse the geometry.



5.7 Other polymers [i](#)

There are no such residues in this entry.

5.8 Polymer linkage issues [i](#)

There are no chain breaks in this entry.

6 Fit of model and data [i](#)

6.1 Protein, DNA and RNA chains [i](#)

In the following table, the column labelled ‘#RSRZ> 2’ contains the number (and percentage) of RSRZ outliers, followed by percent RSRZ outliers for the chain as percentile scores relative to all X-ray entries and entries of similar resolution. The OWAB column contains the minimum, median, 95th percentile and maximum values of the occupancy-weighted average B-factor per residue. The column labelled ‘Q< 0.9’ lists the number of (and percentage) of residues with an average occupancy less than 0.9.

Mol	Chain	Analysed	<RSRZ>	#RSRZ>2	OWAB(Å ²)	Q<0.9
1	A	300/303 (99%)	-0.13	4 (1%) 77 74	6, 9, 16, 26	2 (0%)

All (4) RSRZ outliers are listed below:

Mol	Chain	Res	Type	RSRZ
1	A	202	TYR	9.9
1	A	303[A]	SER	5.0
1	A	277[A]	GLY	4.4
1	A	286	GLU	2.1

6.2 Non-standard residues in protein, DNA, RNA chains [i](#)

There are no non-standard protein/DNA/RNA residues in this entry.

6.3 Carbohydrates [i](#)

There are no carbohydrates in this entry.

6.4 Ligands [i](#)

In the following table, the Atoms column lists the number of modelled atoms in the group and the number defined in the chemical component dictionary. The B-factors column lists the minimum, median, 95th percentile and maximum values of B factors of atoms in the group. The column labelled ‘Q< 0.9’ lists the number of atoms with occupancy less than 0.9.

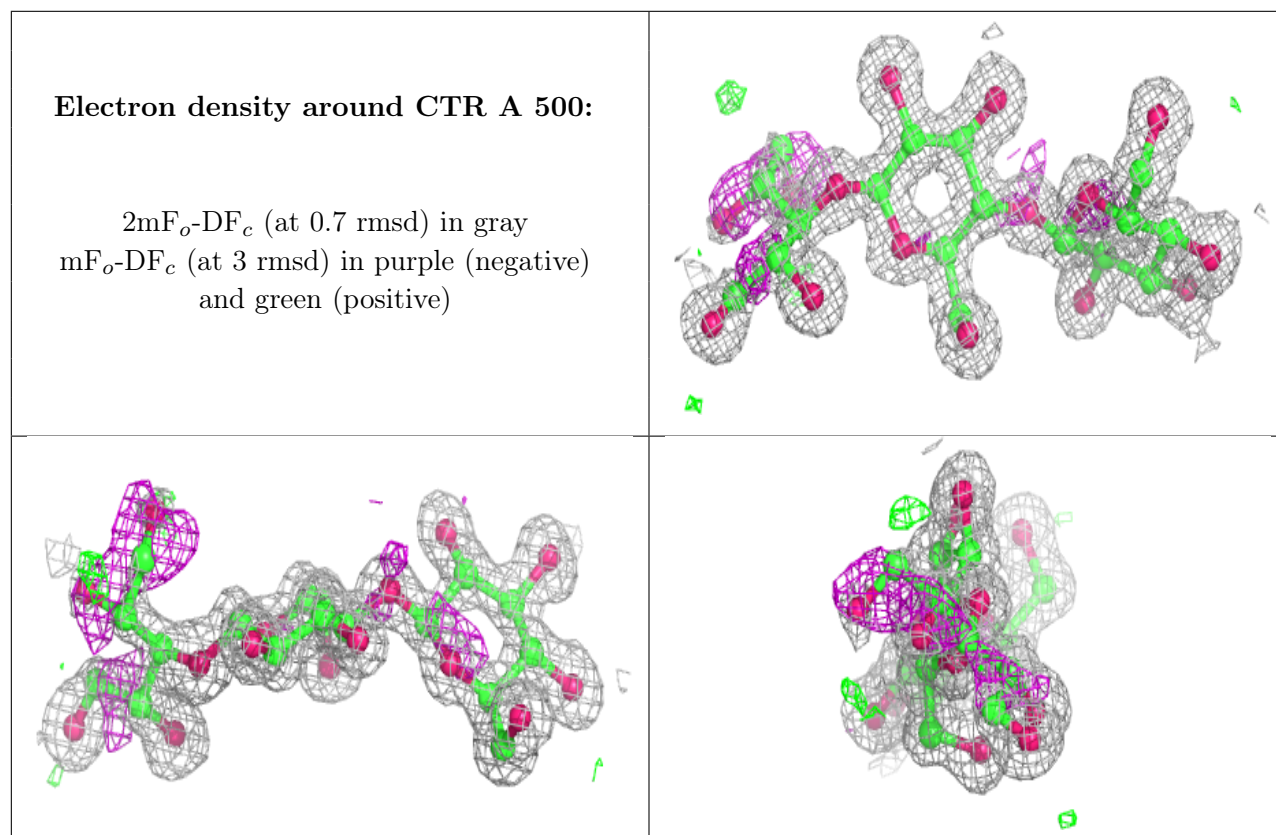
Mol	Type	Chain	Res	Atoms	RSCC	RSR	B-factors(Å ²)	Q<0.9
4	ACY	A	502	4/4	0.84	0.31	24,25,27,29	0
5	GOL	A	504	6/6	0.90	0.21	12,16,18,18	0
3	SO4	A	501	5/5	0.90	0.39	29,30,36,39	0

Continued on next page...

Continued from previous page...

Mol	Type	Chain	Res	Atoms	RSCC	RSR	B-factors(\AA^2)	Q<0.9
2	CTR	A	500	32/34	0.95	0.17	9,14,24,32	0
5	GOL	A	503	6/6	0.98	0.05	8,8,10,11	0

The following is a graphical depiction of the model fit to experimental electron density of all instances of the Ligand of Interest. In addition, ligands with molecular weight > 250 and outliers as shown on the geometry validation Tables will also be included. Each fit is shown from different orientation to approximate a three-dimensional view.



6.5 Other polymers [i](#)

There are no such residues in this entry.