



# Full wwPDB X-ray Structure Validation Report ⓘ

Sep 10, 2018 – 03:23 PM EDT

PDB ID : 6HFW  
Title : Mycobacterium tuberculosis DprE1 in complex with CMP1  
Authors : Chung, C.  
Deposited on : 2018-08-21  
Resolution : 2.47 Å(reported)

This is a Full wwPDB X-ray Structure Validation Report for a publicly released PDB entry.

We welcome your comments at [validation@mail.wwpdb.org](mailto:validation@mail.wwpdb.org)

A user guide is available at

<https://www.wwpdb.org/validation/2017/XrayValidationReportHelp>

with specific help available everywhere you see the ⓘ symbol.

---

The following versions of software and data (see [references ⓘ](#)) were used in the production of this report:

MolProbity : 4.02b-467  
Mogul : 1.7.3 (157068), CSD as539be (2018)  
Xtriage (Phenix) : 1.13  
EDS : rb-20031172  
Percentile statistics : 20171227.v01 (using entries in the PDB archive December 27th 2017)  
Refmac : 5.8.0158  
CCP4 : 7.0 (Gargrove)  
Ideal geometry (proteins) : Engh & Huber (2001)  
Ideal geometry (DNA, RNA) : Parkinson et al. (1996)  
Validation Pipeline (wwPDB-VP) : rb-20031172

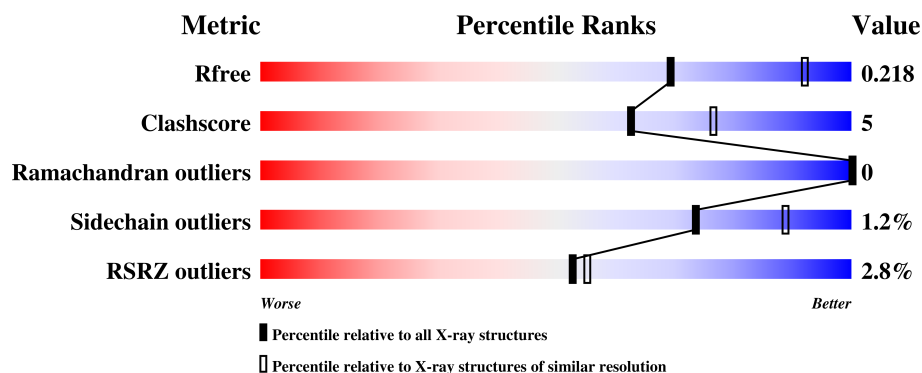
# 1 Overall quality at a glance

The following experimental techniques were used to determine the structure:

*X-RAY DIFFRACTION*

The reported resolution of this entry is 2.47 Å.

Percentile scores (ranging between 0-100) for global validation metrics of the entry are shown in the following graphic. The table shows the number of entries on which the scores are based.



Metric	Whole archive (#Entries)	Similar resolution (#Entries, resolution range(Å))
$R_{free}$	111664	5140 (2.50-2.46)
Clashscore	122126	5860 (2.50-2.46)
Ramachandran outliers	120053	5763 (2.50-2.46)
Sidechain outliers	120020	5765 (2.50-2.46)
RSRZ outliers	108989	5026 (2.50-2.46)

The table below summarises the geometric issues observed across the polymeric chains and their fit to the electron density. The red, orange, yellow and green segments on the lower bar indicate the fraction of residues that contain outliers for  $\geq 3$ , 2, 1 and 0 types of geometric quality criteria. A grey segment represents the fraction of residues that are not modelled. The numeric value for each fraction is indicated below the corresponding segment, with a dot representing fractions  $\leq 5\%$ . The upper red bar (where present) indicates the fraction of residues that have poor fit to the electron density. The numeric value is given above the bar.

Mol	Chain	Length	Quality of chain
1	A	475	<div> <div>2%</div> <div>82%</div> <div>8%</div> <div>10%</div> </div>
1	B	475	<div> <div>3%</div> <div>76%</div> <div>12%</div> <div>12%</div> </div>

## 2 Entry composition

There are 5 unique types of molecules in this entry. The entry contains 6863 atoms, of which 0 are hydrogens and 0 are deuteriums.

In the tables below, the ZeroOcc column contains the number of atoms modelled with zero occupancy, the AltConf column contains the number of residues with at least one atom in alternate conformation and the Trace column contains the number of residues modelled with at most 2 atoms.

- Molecule 1 is a protein called Decaprenylphosphoryl-beta-D-ribose oxidase.

Mol	Chain	Residues	Atoms					ZeroOcc	AltConf	Trace
1	A	429	Total	C	N	O	S	0	0	0
			3288	2088	579	610	11			
1	B	416	Total	C	N	O	S	0	0	0
			3190	2024	565	591	10			

There are 28 discrepancies between the modelled and reference sequences:

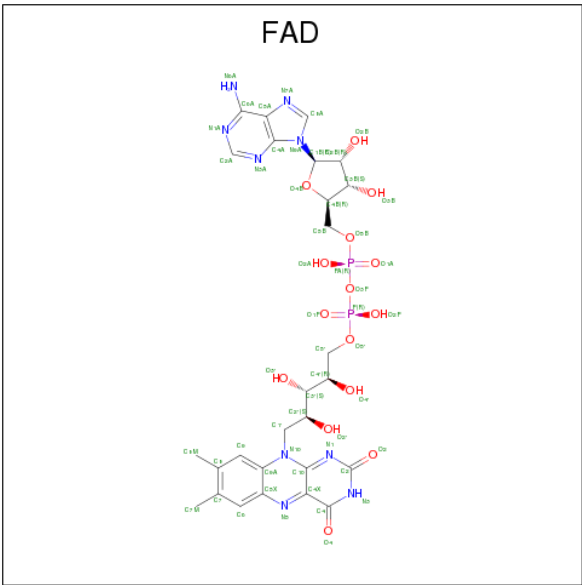
Chain	Residue	Modelled	Actual	Comment	Reference
A	-13	MET	-	initiating methionine	UNP P9WJF1
A	-12	GLY	-	expression tag	UNP P9WJF1
A	-11	SER	-	expression tag	UNP P9WJF1
A	-10	SER	-	expression tag	UNP P9WJF1
A	-9	HIS	-	expression tag	UNP P9WJF1
A	-8	HIS	-	expression tag	UNP P9WJF1
A	-7	HIS	-	expression tag	UNP P9WJF1
A	-6	HIS	-	expression tag	UNP P9WJF1
A	-5	HIS	-	expression tag	UNP P9WJF1
A	-4	HIS	-	expression tag	UNP P9WJF1
A	-3	SER	-	expression tag	UNP P9WJF1
A	-2	GLN	-	expression tag	UNP P9WJF1
A	-1	ASP	-	expression tag	UNP P9WJF1
A	0	PRO	-	expression tag	UNP P9WJF1
B	-13	MET	-	initiating methionine	UNP P9WJF1
B	-12	GLY	-	expression tag	UNP P9WJF1
B	-11	SER	-	expression tag	UNP P9WJF1
B	-10	SER	-	expression tag	UNP P9WJF1
B	-9	HIS	-	expression tag	UNP P9WJF1
B	-8	HIS	-	expression tag	UNP P9WJF1
B	-7	HIS	-	expression tag	UNP P9WJF1
B	-6	HIS	-	expression tag	UNP P9WJF1
B	-5	HIS	-	expression tag	UNP P9WJF1
B	-4	HIS	-	expression tag	UNP P9WJF1
B	-3	SER	-	expression tag	UNP P9WJF1

*Continued on next page...*

Continued from previous page...

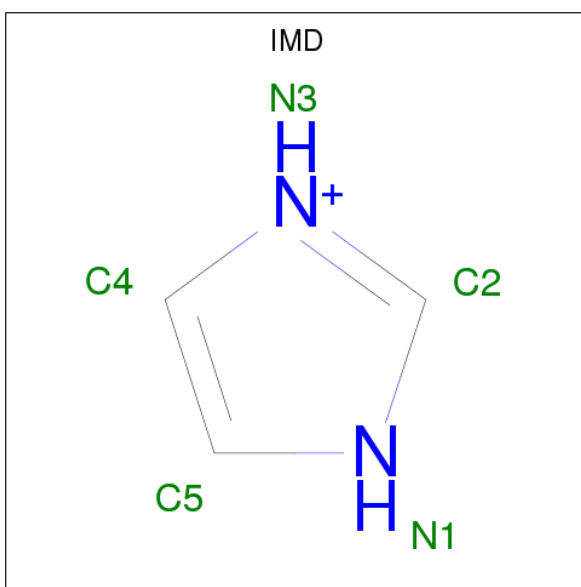
Chain	Residue	Modelled	Actual	Comment	Reference
B	-2	GLN	-	expression tag	UNP P9WJF1
B	-1	ASP	-	expression tag	UNP P9WJF1
B	0	PRO	-	expression tag	UNP P9WJF1

- Molecule 2 is FLAVIN-ADENINE DINUCLEOTIDE (three-letter code: FAD) (formula: C<sub>27</sub>H<sub>33</sub>N<sub>9</sub>O<sub>15</sub>P<sub>2</sub>).



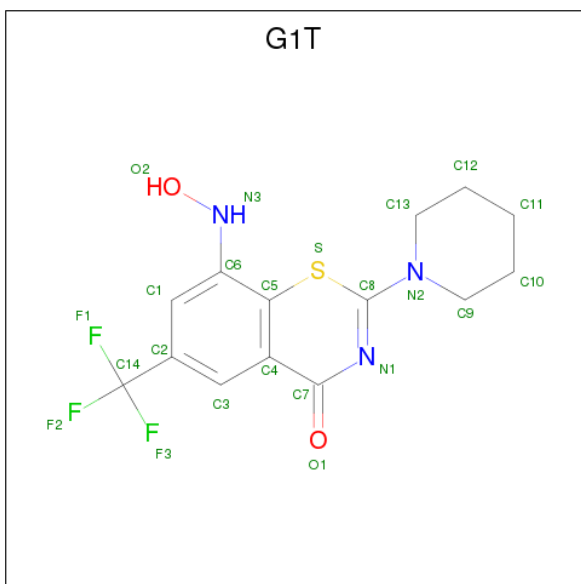
Mol	Chain	Residues	Atoms					ZeroOcc	AltConf
2	A	1	Total	C	N	O	P	0	0
			53	27	9	15	2		
2	B	1	Total	C	N	O	P	0	0
			53	27	9	15	2		

- Molecule 3 is IMIDAZOLE (three-letter code: IMD) (formula: C<sub>3</sub>H<sub>5</sub>N<sub>2</sub>).



Mol	Chain	Residues	Atoms			ZeroOcc	AltConf
3	A	1	Total	C	N	0	0
			5	3	2		

- Molecule 4 is 8-(oxidanylamino)-2-piperidin-1-yl-6-(trifluoromethyl)-1,3-benzothiazin-4-one (three-letter code: G1T) (formula:  $C_{14}H_{14}F_3N_3O_2S$ ).



Mol	Chain	Residues	Atoms						ZeroOcc	AltConf
4	A	1	Total	C	F	N	O	S	0	0
			23	14	3	3	2	1		
4	B	1	Total	C	F	N	O	S	0	0
			23	14	3	3	2	1		

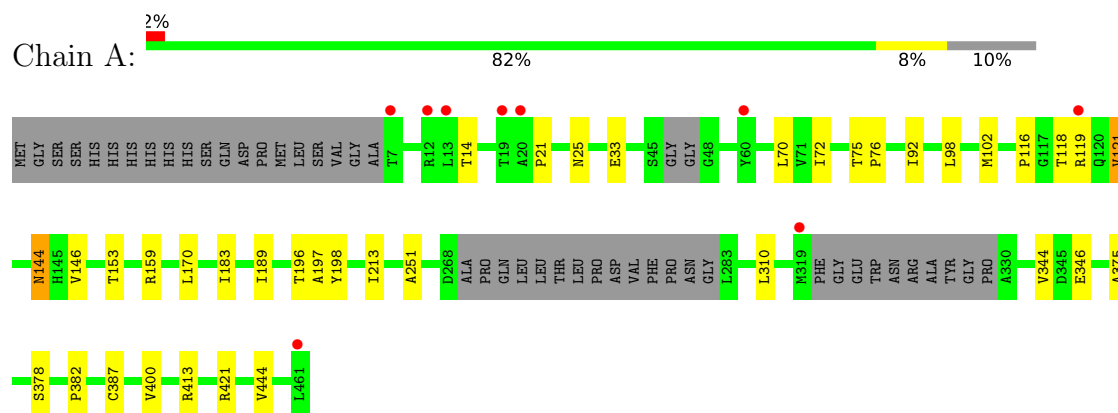
- Molecule 5 is water.

Mol	Chain	Residues	Atoms		ZeroOcc	AltConf
5	A	136	Total 136	O 136	0	0
5	B	92	Total 92	O 92	0	0

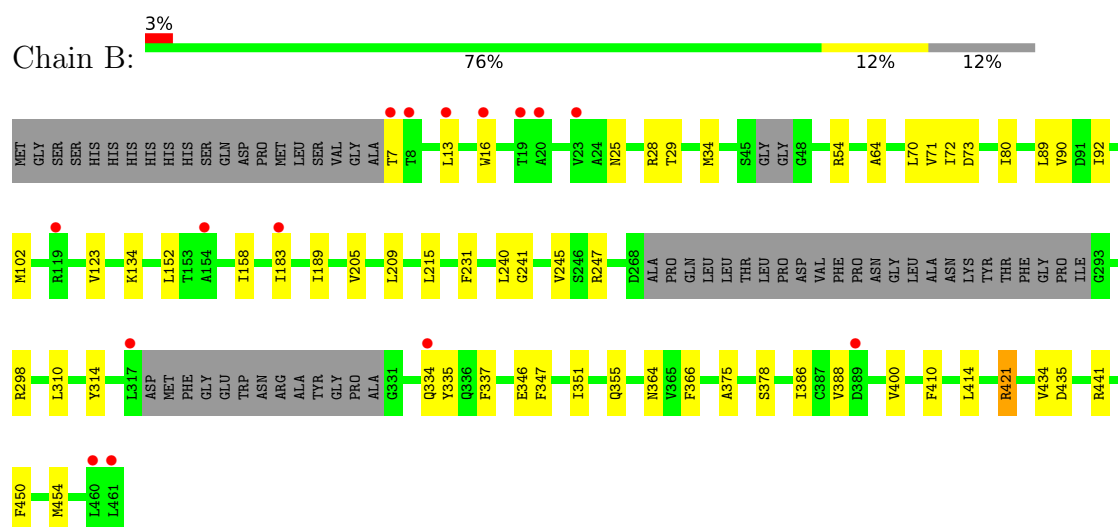
### 3 Residue-property plots [i](#)

These plots are drawn for all protein, RNA and DNA chains in the entry. The first graphic for a chain summarises the proportions of the various outlier classes displayed in the second graphic. The second graphic shows the sequence view annotated by issues in geometry and electron density. Residues are color-coded according to the number of geometric quality criteria for which they contain at least one outlier: green = 0, yellow = 1, orange = 2 and red = 3 or more. A red dot above a residue indicates a poor fit to the electron density ( $RSRZ > 2$ ). Stretches of 2 or more consecutive residues without any outlier are shown as a green connector. Residues present in the sample, but not in the model, are shown in grey.

- Molecule 1: Decaprenylphosphoryl-beta-D-ribose oxidase



- Molecule 1: Decaprenylphosphoryl-beta-D-ribose oxidase



## 4 Data and refinement statistics

Property	Value	Source
Space group	P 1 21 1	Depositor
Cell constants a, b, c, $\alpha$ , $\beta$ , $\gamma$	78.34Å 84.73Å 80.90Å 90.00° 103.20° 90.00°	Depositor
Resolution (Å)	56.69 – 2.47 56.69 – 2.47	Depositor EDS
% Data completeness (in resolution range)	96.1 (56.69-2.47) 96.1 (56.69-2.47)	Depositor EDS
$R_{merge}$	(Not available)	Depositor
$R_{sym}$	(Not available)	Depositor
$\langle I/\sigma(I) \rangle$ <sup>1</sup>	2.16 (at 2.48Å)	Xtriage
Refinement program	REFMAC 5.6.0117	Depositor
R, $R_{free}$	0.168 , 0.220 0.169 , 0.218	Depositor DCC
$R_{free}$ test set	1776 reflections (4.98%)	wwPDB-VP
Wilson B-factor (Å <sup>2</sup> )	58.5	Xtriage
Anisotropy	0.110	Xtriage
Bulk solvent $k_{sol}$ (e/Å <sup>3</sup> ), $B_{sol}$ (Å <sup>2</sup> )	0.31 , 43.6	EDS
L-test for twinning <sup>2</sup>	$\langle  L  \rangle = 0.47$ , $\langle L^2 \rangle = 0.30$	Xtriage
Estimated twinning fraction	0.029 for l,-k,h	Xtriage
$F_o, F_c$ correlation	0.96	EDS
Total number of atoms	6863	wwPDB-VP
Average B, all atoms (Å <sup>2</sup> )	64.0	wwPDB-VP

Xtriage's analysis on translational NCS is as follows: *The largest off-origin peak in the Patterson function is 4.29% of the height of the origin peak. No significant pseudotranslation is detected.*

<sup>1</sup>Intensities estimated from amplitudes.

<sup>2</sup>Theoretical values of  $\langle |L| \rangle$ ,  $\langle L^2 \rangle$  for acentric reflections are 0.5, 0.333 respectively for untwinned datasets, and 0.375, 0.2 for perfectly twinned datasets.



## 5 Model quality [i](#)

### 5.1 Standard geometry [i](#)

Bond lengths and bond angles in the following residue types are not validated in this section: G1T, IMD, FAD

The Z score for a bond length (or angle) is the number of standard deviations the observed value is removed from the expected value. A bond length (or angle) with  $|Z| > 5$  is considered an outlier worth inspection. RMSZ is the root-mean-square of all Z scores of the bond lengths (or angles).

Mol	Chain	Bond lengths		Bond angles	
		RMSZ	$\# Z  > 5$	RMSZ	$\# Z  > 5$
1	A	0.53	0/3362	0.61	0/4565
1	B	0.51	1/3261 (0.0%)	0.59	0/4429
All	All	0.52	1/6623 (0.0%)	0.60	0/8994

All (1) bond length outliers are listed below:

Mol	Chain	Res	Type	Atoms	Z	Observed(Å)	Ideal(Å)
1	B	16	TRP	CD2-CE2	5.09	1.47	1.41

There are no bond angle outliers.

There are no chirality outliers.

There are no planarity outliers.

### 5.2 Too-close contacts [i](#)

In the following table, the Non-H and H(model) columns list the number of non-hydrogen atoms and hydrogen atoms in the chain respectively. The H(added) column lists the number of hydrogen atoms added and optimized by MolProbity. The Clashes column lists the number of clashes within the asymmetric unit, whereas Symm-Clashes lists symmetry related clashes.

Mol	Chain	Non-H	H(model)	H(added)	Clashes	Symm-Clashes
1	A	3288	0	3237	22	0
1	B	3190	0	3149	40	0
2	A	53	0	31	0	0
2	B	53	0	31	0	0
3	A	5	0	5	0	0
4	A	23	0	0	1	0
4	B	23	0	0	0	0
5	A	136	0	0	1	0

*Continued on next page...*

*Continued from previous page...*

Mol	Chain	Non-H	H(model)	H(added)	Clashes	Symm-Clashes
5	B	92	0	0	2	0
All	All	6863	0	6453	62	0

The all-atom clashscore is defined as the number of clashes found per 1000 atoms (including hydrogen atoms). The all-atom clashscore for this structure is 5.

All (62) close contacts within the same asymmetric unit are listed below, sorted by their clash magnitude.

Atom-1	Atom-2	Interatomic distance (Å)	Clash overlap (Å)
1:A:387:CYS:SG	4:A:503:G1T:N3	2.13	1.21
1:B:351:ILE:HD11	1:B:386:ILE:HD11	1.42	0.99
1:B:351:ILE:HD11	1:B:386:ILE:CD1	1.94	0.97
1:A:196:THR:HG22	1:A:198:TYR:H	1.29	0.96
1:A:196:THR:HG22	1:A:198:TYR:N	2.00	0.77
1:A:400:VAL:HG12	1:A:421:ARG:CZ	2.19	0.73
1:A:25:ASN:O	1:A:70:LEU:HD12	1.94	0.67
1:B:351:ILE:CD1	1:B:386:ILE:CD1	2.72	0.66
1:B:346:GLU:HG2	1:B:410:PHE:CD1	2.32	0.65
1:A:72:ILE:HD12	1:A:183:ILE:HD11	1.82	0.62
1:B:152:LEU:HD13	1:B:158:ILE:HD13	1.82	0.61
1:B:375:ALA:HB3	1:B:378:SER:HB2	1.84	0.60
1:B:400:VAL:HG12	1:B:421:ARG:NH2	2.18	0.59
1:B:72:ILE:HD12	1:B:183:ILE:HD11	1.85	0.58
1:A:14:THR:HG22	1:A:21:PRO:HA	1.87	0.57
1:B:25:ASN:O	1:B:70:LEU:HD12	2.07	0.54
1:A:213:ILE:HD13	1:A:344:VAL:HG23	1.91	0.53
1:B:364:ASN:ND2	1:B:388:VAL:HG12	2.23	0.53
1:A:375:ALA:HB3	1:A:378:SER:HB2	1.92	0.52
1:A:98:LEU:HD12	1:A:121:VAL:HG22	1.90	0.52
1:B:152:LEU:HD13	1:B:158:ILE:CD1	2.40	0.51
1:B:215:LEU:CD2	1:B:245:VAL:HG21	2.41	0.51
1:B:335:TYR:HB3	1:B:388:VAL:HG23	1.93	0.51
1:B:364:ASN:HD22	1:B:388:VAL:HG12	1.76	0.50
1:B:72:ILE:HD12	1:B:183:ILE:CD1	2.42	0.49
1:B:90:VAL:HG22	1:B:189:ILE:HB	1.95	0.49
1:B:134:LYS:HG2	5:B:648:HOH:O	2.13	0.49
1:A:144:ASN:H	1:A:144:ASN:HD22	1.60	0.48
1:B:347:PHE:CZ	1:B:386:ILE:HD11	2.48	0.48
1:A:119:ARG:HD3	1:A:310:LEU:HD21	1.95	0.48
1:A:102:MET:HG3	5:A:674:HOH:O	2.13	0.48
1:B:80:ILE:HA	1:B:92:ILE:HG22	1.96	0.47

*Continued on next page...*

*Continued from previous page...*

Atom-1	Atom-2	Interatomic distance (Å)	Clash overlap (Å)
1:A:170:LEU:HD13	1:A:444:VAL:HG21	1.97	0.47
1:B:245:VAL:HG12	1:B:247:ARG:HG3	1.96	0.46
1:B:205:VAL:CG2	1:B:298:ARG:HA	2.47	0.45
1:B:92:ILE:HD12	1:B:92:ILE:O	2.17	0.45
1:B:29:THR:HG21	1:B:34:MET:CB	2.47	0.45
1:A:196:THR:HB	1:A:251:ALA:O	2.17	0.44
1:B:89:LEU:HD11	5:B:691:HOH:O	2.17	0.44
1:A:75:THR:N	1:A:76:PRO:CD	2.81	0.44
1:B:347:PHE:CE1	1:B:386:ILE:HD11	2.53	0.44
1:B:13:LEU:CD1	1:B:71:VAL:HG11	2.47	0.44
1:A:153:THR:HG21	1:A:159:ARG:HD3	2.00	0.44
1:A:346:GLU:OE1	1:A:346:GLU:N	2.45	0.44
1:A:144:ASN:N	1:A:144:ASN:HD22	2.16	0.43
1:A:116:PRO:HG2	1:A:118:THR:O	2.19	0.43
1:B:240:LEU:HD13	1:B:355:GLN:HG3	2.00	0.43
1:B:366:PHE:CD1	1:B:366:PHE:C	2.92	0.42
1:B:209:LEU:HB2	1:B:241:GLY:HA3	2.01	0.42
1:B:441:ARG:NH2	1:B:450:PHE:O	2.52	0.42
1:B:454:MET:HB2	1:B:454:MET:HE3	1.92	0.42
1:B:7:THR:HG21	1:B:34:MET:CE	2.50	0.42
1:A:146:VAL:HG22	1:A:189:ILE:CD1	2.51	0.41
1:B:337:PHE:HB3	1:B:414:LEU:HD23	2.01	0.41
1:B:92:ILE:HD11	1:B:123:VAL:HG11	2.02	0.41
1:B:28:ARG:NH1	1:B:73:ASP:OD2	2.52	0.41
1:B:231:PHE:CE1	1:B:364:ASN:HB3	2.56	0.40
1:B:434:VAL:HG13	1:B:435:ASP:N	2.36	0.40
1:A:196:THR:HG22	1:A:197:ALA:N	2.36	0.40
1:B:102:MET:HE1	1:B:310:LEU:HD22	2.04	0.40
1:B:334:GLN:OE1	1:B:334:GLN:N	2.55	0.40
1:B:54:ARG:HG3	1:B:64:ALA:HB1	2.04	0.40

There are no symmetry-related clashes.

## 5.3 Torsion angles ⓘ

### 5.3.1 Protein backbone ⓘ

In the following table, the Percentiles column shows the percent Ramachandran outliers of the chain as a percentile score with respect to all X-ray entries followed by that with respect to entries of similar resolution.

The Analysed column shows the number of residues for which the backbone conformation was analysed, and the total number of residues.

Mol	Chain	Analysed	Favoured	Allowed	Outliers	Percentiles	
1	A	421/475 (89%)	415 (99%)	6 (1%)	0	100	100
1	B	408/475 (86%)	401 (98%)	7 (2%)	0	100	100
All	All	829/950 (87%)	816 (98%)	13 (2%)	0	100	100

There are no Ramachandran outliers to report.

### 5.3.2 Protein sidechains ⓘ

In the following table, the Percentiles column shows the percent sidechain outliers of the chain as a percentile score with respect to all X-ray entries followed by that with respect to entries of similar resolution.

The Analysed column shows the number of residues for which the sidechain conformation was analysed, and the total number of residues.

Mol	Chain	Analysed	Rotameric	Outliers	Percentiles	
1	A	339/381 (89%)	333 (98%)	6 (2%)	62	82
1	B	331/381 (87%)	329 (99%)	2 (1%)	87	95
All	All	670/762 (88%)	662 (99%)	8 (1%)	74	89

All (8) residues with a non-rotameric sidechain are listed below:

Mol	Chain	Res	Type
1	A	33	GLU
1	A	92	ILE
1	A	121	VAL
1	A	144	ASN
1	A	382	PRO
1	A	413	ARG
1	B	314	TYR
1	B	421	ARG

Some sidechains can be flipped to improve hydrogen bonding and reduce clashes. All (4) such sidechains are listed below:

Mol	Chain	Res	Type
1	A	144	ASN
1	A	364	ASN

*Continued on next page...*

*Continued from previous page...*

Mol	Chain	Res	Type
1	B	309	ASN
1	B	364	ASN

### 5.3.3 RNA ⓘ

There are no RNA molecules in this entry.

## 5.4 Non-standard residues in protein, DNA, RNA chains ⓘ

There are no non-standard protein/DNA/RNA residues in this entry.

## 5.5 Carbohydrates ⓘ

There are no carbohydrates in this entry.

## 5.6 Ligand geometry ⓘ

5 ligands are modelled in this entry.

In the following table, the Counts columns list the number of bonds (or angles) for which Mogul statistics could be retrieved, the number of bonds (or angles) that are observed in the model and the number of bonds (or angles) that are defined in the Chemical Component Dictionary. The Link column lists molecule types, if any, to which the group is linked. The Z score for a bond length (or angle) is the number of standard deviations the observed value is removed from the expected value. A bond length (or angle) with  $|Z| > 2$  is considered an outlier worth inspection. RMSZ is the root-mean-square of all Z scores of the bond lengths (or angles).

Mol	Type	Chain	Res	Link	Bond lengths			Bond angles		
					Counts	RMSZ	# Z  > 2	Counts	RMSZ	# Z  > 2
2	FAD	A	501	-	51,58,58	1.35	5 (9%)	57,89,89	2.11	10 (17%)
3	IMD	A	502	-	3,5,5	0.34	0	4,5,5	0.50	0
4	G1T	A	503	-	20,25,25	2.22	4 (20%)	24,37,37	2.21	5 (20%)
2	FAD	B	501	-	51,58,58	1.52	7 (13%)	57,89,89	2.12	10 (17%)
4	G1T	B	502	-	20,25,25	2.21	4 (20%)	24,37,37	2.29	6 (25%)

In the following table, the Chirals column lists the number of chiral outliers, the number of chiral centers analysed, the number of these observed in the model and the number defined in the Chemical Component Dictionary. Similar counts are reported in the Torsion and Rings columns. '-' means no outliers of that kind were identified.

Mol	Type	Chain	Res	Link	Chirals	Torsions	Rings
2	FAD	A	501	-	-	0/28/50/50	0/6/6/6
3	IMD	A	502	-	-	0/0/0/0	0/1/1/1
4	G1T	A	503	-	-	0/8/20/20	0/2/3/3
2	FAD	B	501	-	-	0/28/50/50	0/6/6/6
4	G1T	B	502	-	-	0/8/20/20	0/2/3/3

All (20) bond length outliers are listed below:

Mol	Chain	Res	Type	Atoms	Z	Observed(Å)	Ideal(Å)
4	B	502	G1T	O2-N3	-5.93	1.24	1.39
4	A	503	G1T	O2-N3	-5.67	1.25	1.39
2	B	501	FAD	C2A-N3A	2.05	1.35	1.32
4	B	502	G1T	C1-C6	2.09	1.41	1.38
4	A	503	G1T	C1-C6	2.22	1.41	1.38
2	A	501	FAD	C5A-C4A	2.61	1.46	1.40
2	B	501	FAD	C5A-C4A	2.88	1.47	1.40
2	A	501	FAD	C8-C7	3.00	1.48	1.40
4	B	502	G1T	C7-N1	3.24	1.38	1.33
2	A	501	FAD	C9A-C5X	3.36	1.49	1.42
2	B	501	FAD	C8-C7	3.38	1.49	1.40
4	A	503	G1T	C7-N1	3.44	1.39	1.33
2	B	501	FAD	C9A-N10	3.50	1.43	1.38
2	B	501	FAD	C9A-C5X	3.68	1.50	1.42
2	A	501	FAD	C4-C4X	3.80	1.48	1.41
2	A	501	FAD	C4X-C10	3.99	1.47	1.41
2	B	501	FAD	C4-C4X	4.16	1.48	1.41
2	B	501	FAD	C4X-C10	4.62	1.48	1.41
4	B	502	G1T	C8-N2	6.19	1.41	1.32
4	A	503	G1T	C8-N2	6.37	1.42	1.32

All (31) bond angle outliers are listed below:

Mol	Chain	Res	Type	Atoms	Z	Observed(°)	Ideal(°)
2	A	501	FAD	N3A-C2A-N1A	-7.94	122.06	128.86
2	B	501	FAD	N3A-C2A-N1A	-6.07	123.67	128.86
2	A	501	FAD	C4-C4X-C10	-5.29	116.00	119.95
2	B	501	FAD	C4-C4X-C10	-4.56	116.54	119.95
4	A	503	G1T	C6-C1-C2	-4.56	118.02	121.96
4	B	502	G1T	C6-C1-C2	-3.97	118.53	121.96
4	A	503	G1T	C4-C7-N1	-3.75	121.86	124.45
2	B	501	FAD	C4X-C4-N3	-3.73	118.17	123.47
4	B	502	G1T	C4-C7-N1	-3.55	122.00	124.45
2	B	501	FAD	C4A-C5A-N7A	-2.85	106.66	109.41

*Continued on next page...*

*Continued from previous page...*

Mol	Chain	Res	Type	Atoms	Z	Observed(°)	Ideal(°)
2	A	501	FAD	C4A-C5A-N7A	-2.80	106.70	109.41
2	B	501	FAD	C9A-N10-C10	-2.75	118.10	121.77
4	B	502	G1T	C3-C2-C14	-2.68	116.00	120.12
2	A	501	FAD	C4X-C4-N3	-2.67	119.67	123.47
2	B	501	FAD	P-O3P-PA	-2.38	124.62	132.63
4	A	503	G1T	C3-C2-C14	-2.18	116.76	120.12
2	A	501	FAD	C9A-N10-C10	-2.12	118.95	121.77
2	A	501	FAD	C2A-N1A-C6A	2.05	122.24	118.75
2	A	501	FAD	C4X-N5-C5X	2.82	119.71	116.76
4	B	502	G1T	C1-C2-C14	3.19	123.97	119.58
2	A	501	FAD	C4-C4X-N5	3.21	122.31	118.70
2	B	501	FAD	C4-C4X-N5	3.44	122.56	118.70
2	B	501	FAD	C4X-N5-C5X	3.82	120.76	116.76
4	B	502	G1T	C7-N1-C8	3.94	122.65	115.48
4	A	503	G1T	C7-N1-C8	4.04	122.84	115.48
2	B	501	FAD	C1'-N10-C9A	5.72	123.39	118.31
2	A	501	FAD	C1'-N10-C9A	6.20	123.82	118.31
4	A	503	G1T	C7-C4-C5	6.91	125.03	119.91
2	A	501	FAD	C4-N3-C2	7.23	121.30	115.14
4	B	502	G1T	C7-C4-C5	7.41	125.40	119.91
2	B	501	FAD	C4-N3-C2	8.70	122.55	115.14

There are no chirality outliers.

There are no torsion outliers.

There are no ring outliers.

1 monomer is involved in 1 short contact:

Mol	Chain	Res	Type	Clashes	Symm-Clashes
4	A	503	G1T	1	0

## 5.7 Other polymers [i](#)

There are no such residues in this entry.

## 5.8 Polymer linkage issues [i](#)

There are no chain breaks in this entry.

## 6 Fit of model and data

### 6.1 Protein, DNA and RNA chains

In the following table, the column labelled ‘#RSRZ> 2’ contains the number (and percentage) of RSRZ outliers, followed by percent RSRZ outliers for the chain as percentile scores relative to all X-ray entries and entries of similar resolution. The OWAB column contains the minimum, median, 95<sup>th</sup> percentile and maximum values of the occupancy-weighted average B-factor per residue. The column labelled ‘Q< 0.9’ lists the number of (and percentage) of residues with an average occupancy less than 0.9.

Mol	Chain	Analysed	<RSRZ>	#RSRZ>2	OWAB(Å <sup>2</sup> )	Q<0.9
1	A	429/475 (90%)	0.13	9 (2%) 63 65	31, 55, 94, 136	0
1	B	416/475 (87%)	0.21	15 (3%) 42 45	35, 66, 112, 152	0
All	All	845/950 (88%)	0.17	24 (2%) 53 55	31, 60, 103, 152	0

All (24) RSRZ outliers are listed below:

Mol	Chain	Res	Type	RSRZ
1	B	19	THR	8.1
1	B	16	TRP	6.1
1	B	8	THR	4.8
1	B	154	ALA	3.6
1	A	461	LEU	3.5
1	B	23	VAL	3.3
1	B	7	THR	3.2
1	A	12	ARG	3.2
1	A	19	THR	3.0
1	A	20	ALA	2.8
1	B	317	LEU	2.8
1	B	20	ALA	2.7
1	A	7	THR	2.6
1	B	334	GLN	2.4
1	B	389	ASP	2.4
1	A	60	TYR	2.3
1	B	460	LEU	2.2
1	A	13	LEU	2.2
1	B	461	LEU	2.1
1	A	119	ARG	2.1
1	B	119	ARG	2.1
1	B	183	ILE	2.1
1	A	319	MET	2.1
1	B	13	LEU	2.1



## 6.2 Non-standard residues in protein, DNA, RNA chains [i](#)

There are no non-standard protein/DNA/RNA residues in this entry.

## 6.3 Carbohydrates [i](#)

There are no carbohydrates in this entry.

## 6.4 Ligands [i](#)

In the following table, the Atoms column lists the number of modelled atoms in the group and the number defined in the chemical component dictionary. The B-factors column lists the minimum, median, 95<sup>th</sup> percentile and maximum values of B factors of atoms in the group. The column labelled 'Q< 0.9' lists the number of atoms with occupancy less than 0.9.

Mol	Type	Chain	Res	Atoms	RSCC	RSR	B-factors( $\text{\AA}^2$ )	Q<0.9
4	G1T	B	502	23/23	0.90	0.24	73,90,131,136	0
4	G1T	A	503	23/23	0.91	0.21	65,78,107,115	0
3	IMD	A	502	5/5	0.95	0.30	87,89,91,93	0
2	FAD	B	501	53/53	0.98	0.15	39,46,49,52	0
2	FAD	A	501	53/53	0.98	0.16	33,36,40,42	0

## 6.5 Other polymers [i](#)

There are no such residues in this entry.