



Full wwPDB X-ray Structure Validation Report ⓘ

Mar 9, 2018 – 05:24 am GMT

PDB ID : 5HMR
Title : Crystal structure of maize cytokinin oxidase/dehydrogenase 4 (ZmCKO4) in complex with phenylurea inhibitor 3FMTDZ
Authors : Kopečný, D.; Koncitikova, R.; Briozzo, P.
Deposited on : 2016-01-16
Resolution : 2.00 Å(reported)

This is a Full wwPDB X-ray Structure Validation Report for a publicly released PDB entry.

We welcome your comments at validation@mail.wwpdb.org

A user guide is available at

<https://www.wwpdb.org/validation/2017/XrayValidationReportHelp>

with specific help available everywhere you see the ⓘ symbol.

The following versions of software and data (see [references ⓘ](#)) were used in the production of this report:

MolProbity : 4.02b-467
Mogul : 1.7.3 (157068), CSD as539be (2018)
Xtriage (Phenix) : 1.13
EDS : trunk30967
Percentile statistics : 20171227.v01 (using entries in the PDB archive December 27th 2017)
Refmac : 5.8.0158
CCP4 : 7.0 (Gargrove)
Ideal geometry (proteins) : Engh & Huber (2001)
Ideal geometry (DNA, RNA) : Parkinson et al. (1996)
Validation Pipeline (wwPDB-VP) : trunk30967

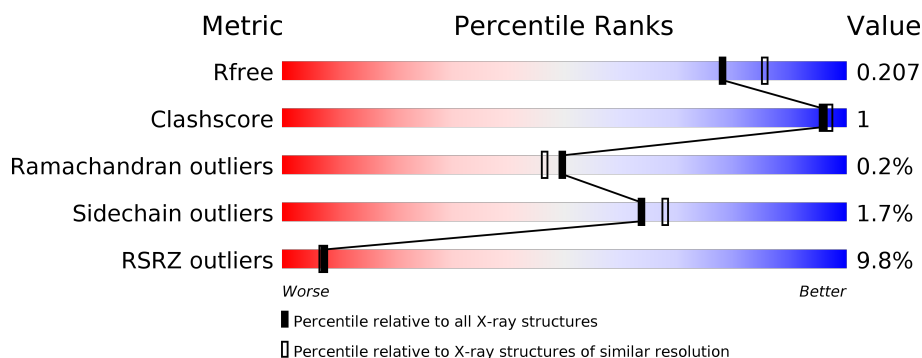
1 Overall quality at a glance

The following experimental techniques were used to determine the structure:

X-RAY DIFFRACTION

The reported resolution of this entry is 2.00 Å.

Percentile scores (ranging between 0-100) for global validation metrics of the entry are shown in the following graphic. The table shows the number of entries on which the scores are based.



Metric	Whole archive (#Entries)	Similar resolution (#Entries, resolution range(Å))
R_{free}	111664	7193 (2.00-2.00)
Clashscore	122126	8267 (2.00-2.00)
Ramachandran outliers	120053	8166 (2.00-2.00)
Sidechain outliers	120020	8165 (2.00-2.00)
RSRZ outliers	108989	7011 (2.00-2.00)

The table below summarises the geometric issues observed across the polymeric chains and their fit to the electron density. The red, orange, yellow and green segments on the lower bar indicate the fraction of residues that contain outliers for ≥ 3 , 2, 1 and 0 types of geometric quality criteria. A grey segment represents the fraction of residues that are not modelled. The numeric value for each fraction is indicated below the corresponding segment, with a dot representing fractions $\leq 5\%$. The upper red bar (where present) indicates the fraction of residues that have poor fit to the electron density. The numeric value is given above the bar.

Mol	Chain	Length	Quality of chain
1	A	524	<div> <div>8%</div> <div>81%</div> <div>•</div> <div>15%</div> </div>

2 Entry composition [i](#)

There are 4 unique types of molecules in this entry. The entry contains 3726 atoms, of which 0 are hydrogens and 0 are deuteriums.

In the tables below, the ZeroOcc column contains the number of atoms modelled with zero occupancy, the AltConf column contains the number of residues with at least one atom in alternate conformation and the Trace column contains the number of residues modelled with at most 2 atoms.

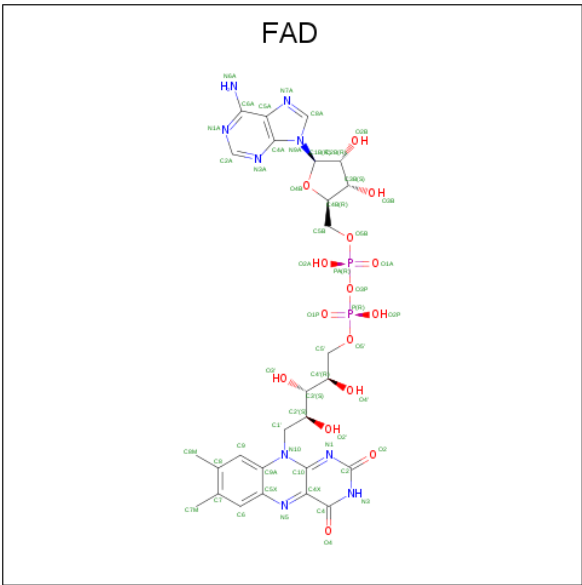
- Molecule 1 is a protein called Cytokinin dehydrogenase 4.

Mol	Chain	Residues	Atoms					ZeroOcc	AltConf	Trace
			Total	C	N	O	S			
1	A	447	3449	2198	622	622	7	0	0	0

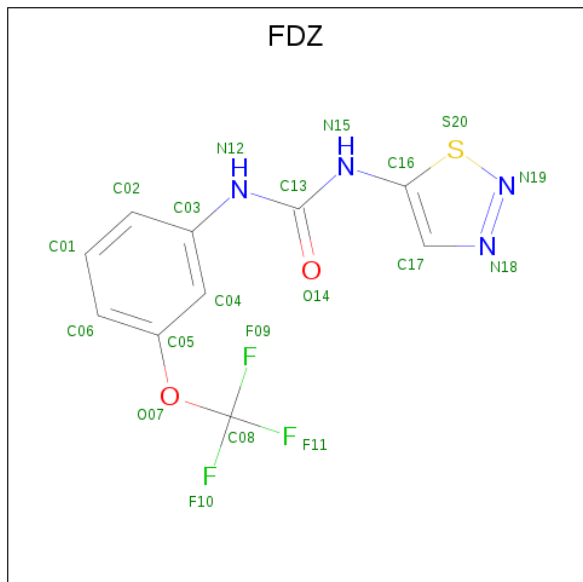
There are 4 discrepancies between the modelled and reference sequences:

Chain	Residue	Modelled	Actual	Comment	Reference
A	18	ALA	-	expression tag	UNP E3T1W8
A	19	GLY	-	expression tag	UNP E3T1W8
A	20	HIS	-	expression tag	UNP E3T1W8
A	21	MET	-	expression tag	UNP E3T1W8

- Molecule 2 is FLAVIN-ADENINE DINUCLEOTIDE (three-letter code: FAD) (formula: C₂₇H₃₃N₉O₁₅P₂).



- Molecule 3 is 1-(1,2,3-thiadiazol-5-yl)-3-[3-(trifluoromethoxy)phenyl]urea (three-letter code: FDZ) (formula: C₁₀H₇F₃N₄O₂S).

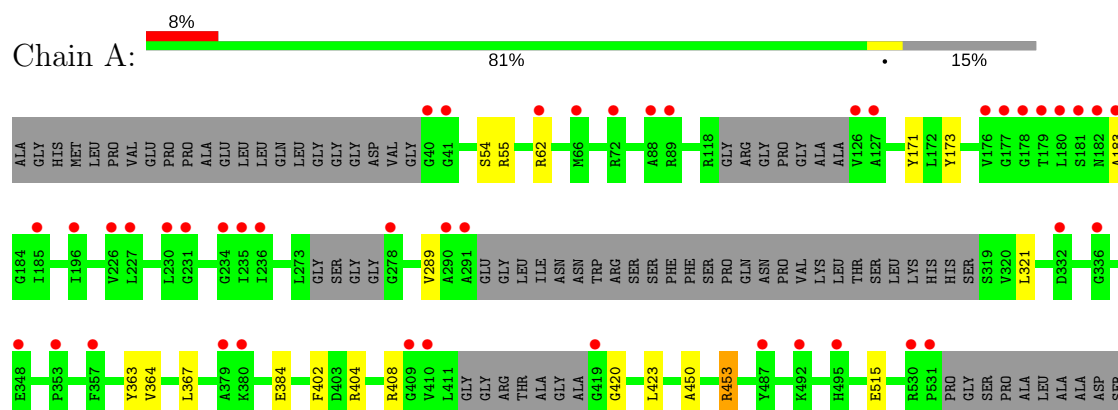


Mol	Chain	Residues	Atoms					ZeroOcc	AltConf
			Total	C	F	N	O		
3	A	1	20	10	3	4	2	0	0

- Molecule 4 is water.

Mol	Chain	Residues	Atoms		ZeroOcc	AltConf
4	A	204	Total	O	0	0
			204	204		

- Molecule 1: Cytokinin dehydrogenase 4



4 Data and refinement statistics

Property	Value	Source
Space group	P 43 21 2	Depositor
Cell constants a, b, c, α , β , γ	79.72Å 79.72Å 203.69Å 90.00° 90.00° 90.00°	Depositor
Resolution (Å)	29.28 – 2.00 29.21 – 2.00	Depositor EDS
% Data completeness (in resolution range)	100.0 (29.28-2.00) 100.0 (29.21-2.00)	Depositor EDS
R_{merge}	(Not available)	Depositor
R_{sym}	0.09	Depositor
$\langle I/\sigma(I) \rangle$ ¹	1.27 (at 2.00Å)	Xtriage
Refinement program	BUSTER 2.10.0	Depositor
R, R_{free}	0.182 , 0.206 0.183 , 0.207	Depositor DCC
R_{free} test set	2267 reflections (5.00%)	wwPDB-VP
Wilson B-factor (Å ²)	40.1	Xtriage
Anisotropy	0.287	Xtriage
Bulk solvent k_{sol} (e/Å ³), B_{sol} (Å ²)	0.33 , 48.8	EDS
L-test for twinning ²	$\langle L \rangle = 0.48$, $\langle L^2 \rangle = 0.32$	Xtriage
Estimated twinning fraction	No twinning to report.	Xtriage
F_o, F_c correlation	0.97	EDS
Total number of atoms	3726	wwPDB-VP
Average B, all atoms (Å ²)	48.0	wwPDB-VP

Xtriage's analysis on translational NCS is as follows: *The largest off-origin peak in the Patterson function is 3.81% of the height of the origin peak. No significant pseudotranslation is detected.*

¹Intensities estimated from amplitudes.

²Theoretical values of $\langle |L| \rangle$, $\langle L^2 \rangle$ for acentric reflections are 0.5, 0.333 respectively for untwinned datasets, and 0.375, 0.2 for perfectly twinned datasets.

5 Model quality

5.1 Standard geometry

Bond lengths and bond angles in the following residue types are not validated in this section: FDZ, FAD

The Z score for a bond length (or angle) is the number of standard deviations the observed value is removed from the expected value. A bond length (or angle) with $|Z| > 5$ is considered an outlier worth inspection. RMSZ is the root-mean-square of all Z scores of the bond lengths (or angles).

Mol	Chain	Bond lengths		Bond angles	
		RMSZ	$\# Z > 5$	RMSZ	$\# Z > 5$
1	A	0.51	0/3536	0.61	0/4797

There are no bond length outliers.

There are no bond angle outliers.

There are no chirality outliers.

There are no planarity outliers.

5.2 Too-close contacts

In the following table, the Non-H and H(model) columns list the number of non-hydrogen atoms and hydrogen atoms in the chain respectively. The H(added) column lists the number of hydrogen atoms added and optimized by MolProbity. The Clashes column lists the number of clashes within the asymmetric unit, whereas Symm-Clashes lists symmetry related clashes.

Mol	Chain	Non-H	H(model)	H(added)	Clashes	Symm-Clashes
1	A	3449	0	3361	7	0
2	A	53	0	29	0	0
3	A	20	0	0	1	0
4	A	204	0	0	0	0
All	All	3726	0	3390	8	0

The all-atom clashscore is defined as the number of clashes found per 1000 atoms (including hydrogen atoms). The all-atom clashscore for this structure is 1.

All (8) close contacts within the same asymmetric unit are listed below, sorted by their clash magnitude.

Atom-1	Atom-2	Interatomic distance (Å)	Clash overlap (Å)
1:A:404:ARG:HA	1:A:408:ARG:HB2	1.92	0.51
3:A:602:FDZ:O14	3:A:602:FDZ:S20	2.72	0.47
1:A:423:LEU:HB2	1:A:450:ALA:HB3	1.98	0.45
1:A:289:VAL:HG13	1:A:321:LEU:HB2	2.00	0.43
1:A:171:TYR:CZ	1:A:173:TYR:HB2	2.55	0.41
1:A:420:GLY:HA3	1:A:453:ARG:HA	2.03	0.41
1:A:54:SER:O	1:A:62:ARG:HA	2.21	0.41
1:A:363:TYR:CZ	1:A:367:LEU:HD11	2.56	0.40

There are no symmetry-related clashes.

5.3 Torsion angles [i](#)

5.3.1 Protein backbone [i](#)

In the following table, the Percentiles column shows the percent Ramachandran outliers of the chain as a percentile score with respect to all X-ray entries followed by that with respect to entries of similar resolution.

The Analysed column shows the number of residues for which the backbone conformation was analysed, and the total number of residues.

Mol	Chain	Analysed	Favoured	Allowed	Outliers	Percentiles
1	A	437/524 (83%)	424 (97%)	12 (3%)	1 (0%)	49 46

All (1) Ramachandran outliers are listed below:

Mol	Chain	Res	Type
1	A	183	ALA

5.3.2 Protein sidechains [i](#)

In the following table, the Percentiles column shows the percent sidechain outliers of the chain as a percentile score with respect to all X-ray entries followed by that with respect to entries of similar resolution.

The Analysed column shows the number of residues for which the sidechain conformation was analysed, and the total number of residues.

Mol	Chain	Analysed	Rotameric	Outliers	Percentiles
1	A	346/398 (87%)	340 (98%)	6 (2%)	63 68

All (6) residues with a non-rotameric sidechain are listed below:

Mol	Chain	Res	Type
1	A	55	ARG
1	A	364	VAL
1	A	384	GLU
1	A	402	PHE
1	A	453	ARG
1	A	515	GLU

Some sidechains can be flipped to improve hydrogen bonding and reduce clashes. There are no such sidechains identified.

5.3.3 RNA ⓘ

There are no RNA molecules in this entry.

5.4 Non-standard residues in protein, DNA, RNA chains ⓘ

There are no non-standard protein/DNA/RNA residues in this entry.

5.5 Carbohydrates ⓘ

There are no carbohydrates in this entry.

5.6 Ligand geometry ⓘ

2 ligands are modelled in this entry.

In the following table, the Counts columns list the number of bonds (or angles) for which Mogul statistics could be retrieved, the number of bonds (or angles) that are observed in the model and the number of bonds (or angles) that are defined in the Chemical Component Dictionary. The Link column lists molecule types, if any, to which the group is linked. The Z score for a bond length (or angle) is the number of standard deviations the observed value is removed from the expected value. A bond length (or angle) with $|Z| > 2$ is considered an outlier worth inspection. RMSZ is the root-mean-square of all Z scores of the bond lengths (or angles).

Mol	Type	Chain	Res	Link	Bond lengths			Bond angles		
					Counts	RMSZ	# $ Z > 2$	Counts	RMSZ	# $ Z > 2$
2	FAD	A	601	1	51,58,58	1.03	4 (7%)	57,89,89	2.18	7 (12%)
3	FDZ	A	602	-	16,21,21	0.89	1 (6%)	22,29,29	1.88	2 (9%)

In the following table, the Chirals column lists the number of chiral outliers, the number of chiral centers analysed, the number of these observed in the model and the number defined in the Chemical Component Dictionary. Similar counts are reported in the Torsion and Rings columns. '-' means no outliers of that kind were identified.

Mol	Type	Chain	Res	Link	Chirals	Torsions	Rings
2	FAD	A	601	1	-	0/28/50/50	0/6/6/6
3	FDZ	A	602	-	-	0/11/13/13	0/2/2/2

All (5) bond length outliers are listed below:

Mol	Chain	Res	Type	Atoms	Z	Observed(Å)	Ideal(Å)
3	A	602	FDZ	C13-N12	2.18	1.42	1.37
2	A	601	FAD	C4X-C10	2.74	1.45	1.41
2	A	601	FAD	C5X-N5	3.02	1.39	1.35
2	A	601	FAD	C4-N3	3.16	1.38	1.33
2	A	601	FAD	C9A-N10	3.22	1.42	1.38

All (9) bond angle outliers are listed below:

Mol	Chain	Res	Type	Atoms	Z	Observed(°)	Ideal(°)
3	A	602	FDZ	C16-N15-C13	-7.52	119.69	130.38
2	A	601	FAD	C4X-C4-N3	-6.43	114.32	123.47
2	A	601	FAD	C4X-C10-N10	-3.43	117.21	120.40
2	A	601	FAD	C4-C4X-C10	-3.40	117.41	119.95
2	A	601	FAD	C1'-N10-C9A	2.25	120.31	118.31
2	A	601	FAD	C4'-C3'-C2'	2.30	118.26	113.40
3	A	602	FDZ	N15-C13-N12	2.71	117.40	112.52
2	A	601	FAD	C10-C4X-N5	3.22	124.29	120.59
2	A	601	FAD	C4-N3-C2	12.55	125.83	115.14

There are no chirality outliers.

There are no torsion outliers.

There are no ring outliers.

1 monomer is involved in 1 short contact:

Mol	Chain	Res	Type	Clashes	Symm-Clashes
3	A	602	FDZ	1	0

5.7 Other polymers ⓘ

There are no such residues in this entry.

5.8 Polymer linkage issues ⓘ

There are no chain breaks in this entry.

6 Fit of model and data

6.1 Protein, DNA and RNA chains

In the following table, the column labelled ‘#RSRZ> 2’ contains the number (and percentage) of RSRZ outliers, followed by percent RSRZ outliers for the chain as percentile scores relative to all X-ray entries and entries of similar resolution. The OWAB column contains the minimum, median, 95th percentile and maximum values of the occupancy-weighted average B-factor per residue. The column labelled ‘Q< 0.9’ lists the number of (and percentage) of residues with an average occupancy less than 0.9.

Mol	Chain	Analysed	<RSRZ>	#RSRZ>2	OWAB(Å ²)	Q<0.9
1	A	447/524 (85%)	0.41	44 (9%) 7 7	31, 45, 75, 102	0

All (44) RSRZ outliers are listed below:

Mol	Chain	Res	Type	RSRZ
1	A	126	VAL	5.8
1	A	40	GLY	5.3
1	A	127	ALA	5.1
1	A	531	PRO	4.9
1	A	180	LEU	4.5
1	A	230	LEU	4.0
1	A	290	ALA	4.0
1	A	89	ARG	3.7
1	A	231	GLY	3.6
1	A	357	PHE	3.5
1	A	235	ILE	3.4
1	A	236	ILE	3.4
1	A	410	VAL	3.4
1	A	183	ALA	3.3
1	A	72	ARG	3.3
1	A	379	ALA	3.3
1	A	278	GLY	3.3
1	A	226	VAL	3.2
1	A	409	GLY	3.1
1	A	419	GLY	3.1
1	A	353	PRO	3.0
1	A	492	LYS	2.9
1	A	234	GLY	2.9
1	A	380	LYS	2.9
1	A	179	THR	2.9
1	A	227	LEU	2.8
1	A	178	GLY	2.7

Continued on next page...

Continued from previous page...

Mol	Chain	Res	Type	RSRZ
1	A	495	HIS	2.7
1	A	88	ALA	2.7
1	A	291	ALA	2.7
1	A	177	GLY	2.7
1	A	182	ASN	2.7
1	A	176	VAL	2.6
1	A	41	GLY	2.6
1	A	185	ILE	2.5
1	A	62	ARG	2.4
1	A	336	GLY	2.3
1	A	66	MET	2.2
1	A	181	SER	2.2
1	A	530	ARG	2.2
1	A	332	ASP	2.1
1	A	348	GLU	2.1
1	A	196	ILE	2.1
1	A	487	TYR	2.0

6.2 Non-standard residues in protein, DNA, RNA chains [i](#)

There are no non-standard protein/DNA/RNA residues in this entry.

6.3 Carbohydrates [i](#)

There are no carbohydrates in this entry.

6.4 Ligands [i](#)

In the following table, the Atoms column lists the number of modelled atoms in the group and the number defined in the chemical component dictionary. The B-factors column lists the minimum, median, 95th percentile and maximum values of B factors of atoms in the group. The column labelled 'Q< 0.9' lists the number of atoms with occupancy less than 0.9.

Mol	Type	Chain	Res	Atoms	RSCC	RSR	B-factors(\AA^2)	Q<0.9
3	FDZ	A	602	20/20	0.95	0.12	34,41,63,64	0
2	FAD	A	601	53/53	0.97	0.17	29,34,38,41	0

6.5 Other polymers [i](#)

There are no such residues in this entry.