



Full wwPDB X-ray Structure Validation Report ⓘ

Mar 9, 2018 – 12:54 pm GMT

PDB ID : 1HQ2
Title : CRYSTAL STRUCTURE OF A TERNARY COMPLEX OF E.COLI HPPK(R82A) WITH MGAMPCPP AND 6-HYDROXYMETHYL-7,8-DI HYDROPTERIN AT 1.25 ANGSTROM RESOLUTION
Authors : Blaszczyk, J.; Ji, X.
Deposited on : 2000-12-13
Resolution : 1.25 Å(reported)

This is a Full wwPDB X-ray Structure Validation Report for a publicly released PDB entry.

We welcome your comments at validation@mail.wwpdb.org

A user guide is available at

<https://www.wwpdb.org/validation/2017/XrayValidationReportHelp>

with specific help available everywhere you see the ⓘ symbol.

The following versions of software and data (see [references ⓘ](#)) were used in the production of this report:

MolProbity : 4.02b-467
Mogul : 1.7.3 (157068), CSD as539be (2018)
Xtriage (Phenix) : 1.13
EDS : trunk30967
Percentile statistics : 20171227.v01 (using entries in the PDB archive December 27th 2017)
Refmac : 5.8.0158
CCP4 : 7.0 (Gargrove)
Ideal geometry (proteins) : Engh & Huber (2001)
Ideal geometry (DNA, RNA) : Parkinson et al. (1996)
Validation Pipeline (wwPDB-VP) : trunk30967

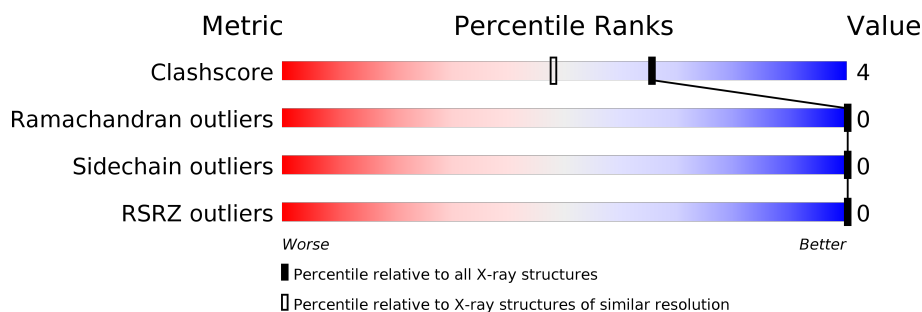
1 Overall quality at a glance

The following experimental techniques were used to determine the structure:

X-RAY DIFFRACTION

The reported resolution of this entry is 1.25 Å.

Percentile scores (ranging between 0-100) for global validation metrics of the entry are shown in the following graphic. The table shows the number of entries on which the scores are based.



Metric	Whole archive (#Entries)	Similar resolution (#Entries, resolution range(Å))
Clashscore	122126	2002 (1.30-1.22)
Ramachandran outliers	120053	1934 (1.30-1.22)
Sidechain outliers	120020	1932 (1.30-1.22)
RSRZ outliers	108989	1874 (1.30-1.22)

The table below summarises the geometric issues observed across the polymeric chains and their fit to the electron density. The red, orange, yellow and green segments on the lower bar indicate the fraction of residues that contain outliers for ≥ 3 , 2, 1 and 0 types of geometric quality criteria. A grey segment represents the fraction of residues that are not modelled. The numeric value for each fraction is indicated below the corresponding segment, with a dot representing fractions $\leq 5\%$. The upper red bar (where present) indicates the fraction of residues that have poor fit to the electron density. The numeric value is given above the bar.

Mol	Chain	Length	Quality of chain
1	A	158	

The following table lists non-polymeric compounds, carbohydrate monomers and non-standard residues in protein, DNA, RNA chains that are outliers for geometric or electron-density-fit criteria:

Mol	Type	Chain	Res	Chirality	Geometry	Clashes	Electron density
4	ACT	A	166	-	-	X	-
4	ACT	A	167	-	-	X	-

2 Entry composition

There are 7 unique types of molecules in this entry. The entry contains 1684 atoms, of which 0 are hydrogens and 0 are deuteriums.

In the tables below, the ZeroOcc column contains the number of atoms modelled with zero occupancy, the AltConf column contains the number of residues with at least one atom in alternate conformation and the Trace column contains the number of residues modelled with at most 2 atoms.

- Molecule 1 is a protein called 6-HYDROXYMETHYL-7,8-DIHYDROPTERIN PYROPHOSPHOKINASE.

Mol	Chain	Residues	Atoms					ZeroOcc	AltConf	Trace
1	A	158	Total	C	N	O	S	0	10	0
			1287	824	221	237	5			

There is a discrepancy between the modelled and reference sequences:

Chain	Residue	Modelled	Actual	Comment	Reference
A	82	ALA	ARG	ENGINEERED	UNP P26281

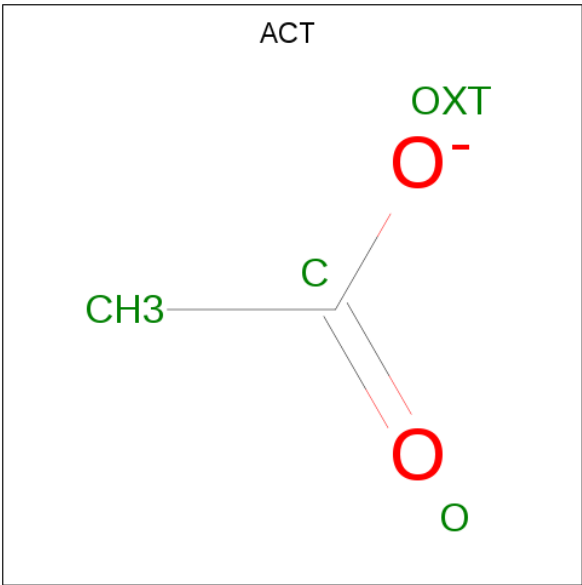
- Molecule 2 is MAGNESIUM ION (three-letter code: MG) (formula: Mg).

Mol	Chain	Residues	Atoms		ZeroOcc	AltConf
2	A	2	Total	Mg	0	0
			2	2		

- Molecule 3 is CHLORIDE ION (three-letter code: CL) (formula: Cl).

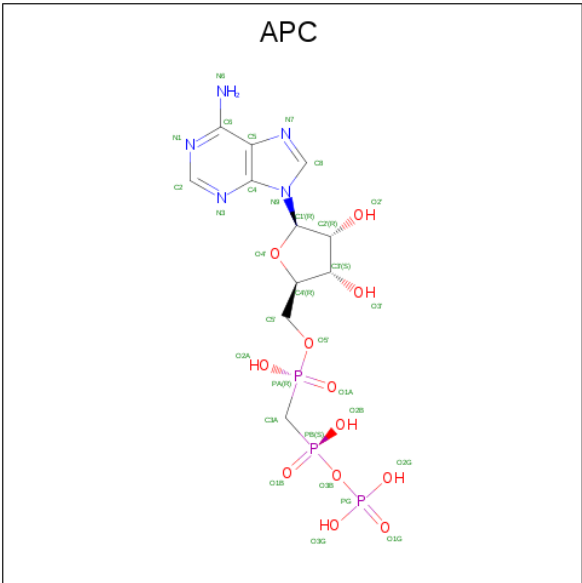
Mol	Chain	Residues	Atoms		ZeroOcc	AltConf
3	A	1	Total	Cl	0	0
			1	1		

- Molecule 4 is ACETATE ION (three-letter code: ACT) (formula: C₂H₃O₂).



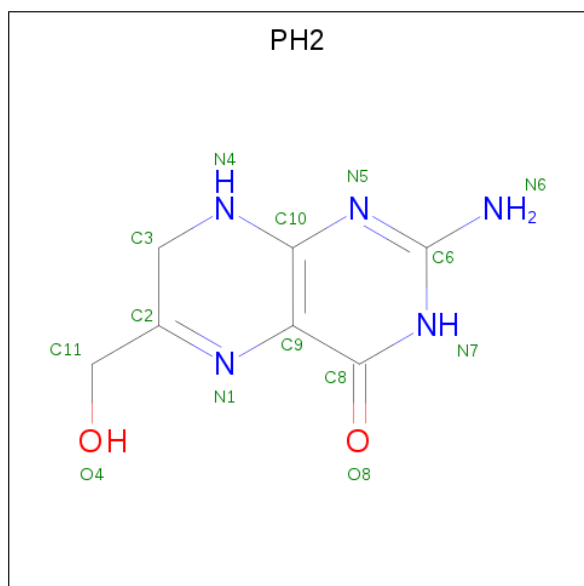
Mol	Chain	Residues	Atoms			ZeroOcc	AltConf
4	A	1	Total	C	O	0	0
			4	2	2		
4	A	1	Total	C	O	0	0
			4	2	2		
4	A	1	Total	C	O	0	0
			4	2	2		
4	A	1	Total	C	O	0	0
			4	2	2		

- Molecule 5 is DIPHOSPHOMETHYLPHOSPHONIC ACID ADENOSYL ESTER (three-letter code: APC) (formula: C₁₁H₁₈N₅O₁₂P₃).



Mol	Chain	Residues	Atoms					ZeroOcc	AltConf
5	A	1	Total	C	N	O	P	0	0
			31	11	5	12	3		

- Molecule 6 is 2-AMINO-6-HYDROXYMETHYL-7,8-DIHYDRO-3H-PTERIDIN-4-ONE (three-letter code: PH2) (formula: C₇H₉N₅O₂).



Mol	Chain	Residues	Atoms				ZeroOcc	AltConf
6	A	1	Total	C	N	O	0	0
			14	7	5	2		

- Molecule 7 is water.

Mol	Chain	Residues	Atoms		ZeroOcc	AltConf
7	A	332	Total	O	0	1
			333	333		

3 Residue-property plots [i](#)

These plots are drawn for all protein, RNA and DNA chains in the entry. The first graphic for a chain summarises the proportions of the various outlier classes displayed in the second graphic. The second graphic shows the sequence view annotated by issues in geometry and electron density. Residues are color-coded according to the number of geometric quality criteria for which they contain at least one outlier: green = 0, yellow = 1, orange = 2 and red = 3 or more. A red dot above a residue indicates a poor fit to the electron density ($RSRZ > 2$). Stretches of 2 or more consecutive residues without any outlier are shown as a green connector. Residues present in the sample, but not in the model, are shown in grey.

- Molecule 1: 6-HYDROXYMETHYL-7,8-DIHYDROPTERIN PYROPHOSPHOKINASE

Chain A:  93% 7%



4 Data and refinement statistics

Property	Value	Source
Space group	C 1 2 1	Depositor
Cell constants a, b, c, α , β , γ	73.37Å 37.84Å 58.02Å 90.00° 117.18° 90.00°	Depositor
Resolution (Å)	30.00 – 1.25 25.81 – 1.25	Depositor EDS
% Data completeness (in resolution range)	94.6 (30.00-1.25) 79.5 (25.81-1.25)	Depositor EDS
R_{merge}	0.09	Depositor
R_{sym}	(Not available)	Depositor
$\langle I/\sigma(I) \rangle$ ¹	2.38 (at 1.25Å)	Xtriage
Refinement program	SHELXL-97	Depositor
R, R_{free}	0.107 , 0.132 0.108 , (Not available)	Depositor DCC
R_{free} test set	No test flags present.	wwPDB-VP
Wilson B-factor (Å ²)	6.4	Xtriage
Anisotropy	0.231	Xtriage
Bulk solvent k_{sol} (e/Å ³), B_{sol} (Å ²)	0.30 , 66.9	EDS
L-test for twinning ²	$\langle L \rangle = 0.48$, $\langle L^2 \rangle = 0.31$	Xtriage
Estimated twinning fraction	No twinning to report.	Xtriage
F_o, F_c correlation	0.98	EDS
Total number of atoms	1684	wwPDB-VP
Average B, all atoms (Å ²)	15.0	wwPDB-VP

Xtriage's analysis on translational NCS is as follows: *The largest off-origin peak in the Patterson function is 10.96% of the height of the origin peak. No significant pseudotranslation is detected.*

¹Intensities estimated from amplitudes.

²Theoretical values of $\langle |L| \rangle$, $\langle L^2 \rangle$ for acentric reflections are 0.5, 0.333 respectively for untwinned datasets, and 0.375, 0.2 for perfectly twinned datasets.

5 Model quality [i](#)

5.1 Standard geometry [i](#)

Bond lengths and bond angles in the following residue types are not validated in this section: APC, MG, ACT, PH2, CL

The Z score for a bond length (or angle) is the number of standard deviations the observed value is removed from the expected value. A bond length (or angle) with $|Z| > 5$ is considered an outlier worth inspection. RMSZ is the root-mean-square of all Z scores of the bond lengths (or angles).

Mol	Chain	Bond lengths		Bond angles	
		RMSZ	$\# Z > 5$	RMSZ	$\# Z > 5$
1	A	0.59	1/1373 (0.1%)	1.14	5/1868 (0.3%)

All (1) bond length outliers are listed below:

Mol	Chain	Res	Type	Atoms	Z	Observed(Å)	Ideal(Å)
1	A	158	TRP	C-OXT	6.10	1.34	1.23

All (5) bond angle outliers are listed below:

Mol	Chain	Res	Type	Atoms	Z	Observed(°)	Ideal(°)
1	A	41	ARG	NE-CZ-NH2	-9.15	115.72	120.30
1	A	52	ASP	CB-CG-OD2	-5.97	112.93	118.30
1	A	52	ASP	CB-CG-OD1	5.96	123.66	118.30
1	A	13[A]	SER	N-CA-CB	5.50	118.75	110.50
1	A	13[B]	SER	N-CA-CB	5.50	118.75	110.50

There are no chirality outliers.

There are no planarity outliers.

5.2 Too-close contacts [i](#)

In the following table, the Non-H and H(model) columns list the number of non-hydrogen atoms and hydrogen atoms in the chain respectively. The H(added) column lists the number of hydrogen atoms added and optimized by MolProbity. The Clashes column lists the number of clashes within the asymmetric unit, whereas Symm-Clashes lists symmetry related clashes.

Mol	Chain	Non-H	H(model)	H(added)	Clashes	Symm-Clashes
1	A	1287	0	1301	9	0
2	A	2	0	0	0	0

Continued on next page...

Continued from previous page...

Mol	Chain	Non-H	H(model)	H(added)	Clashes	Symm-Clashes
3	A	1	0	0	1	0
4	A	16	0	12	3	5
5	A	31	0	14	1	0
6	A	14	0	6	0	0
7	A	333	0	0	4	0
All	All	1684	0	1333	12	5

The all-atom clashscore is defined as the number of clashes found per 1000 atoms (including hydrogen atoms). The all-atom clashscore for this structure is 4.

All (12) close contacts within the same asymmetric unit are listed below, sorted by their clash magnitude.

Atom-1	Atom-2	Interatomic distance (Å)	Clash overlap (Å)
4:A:166:ACT:H1	7:A:466:HOH:O	1.85	0.74
4:A:166:ACT:H2	7:A:380:HOH:O	1.89	0.73
1:A:85[B]:LYS:NZ	1:A:87:GLU:HG2	2.25	0.52
1:A:84[A]:ARG:NH2	7:A:498[A]:HOH:O	2.46	0.49
1:A:30[B]:GLU:HB3	1:A:63[B]:SER:OG	2.15	0.47
1:A:26:GLY:HA3	7:A:321:HOH:O	2.17	0.43
4:A:164:ACT:H2	5:A:171:APC:C8	2.49	0.42
1:A:137:PHE:HB3	3:A:163:CL:CL	2.58	0.41

All (5) symmetry-related close contacts are listed below. The label for Atom-2 includes the symmetry operator and encoded unit-cell translations to be applied.

Atom-1	Atom-2	Interatomic distance (Å)	Clash overlap (Å)
4:A:167:ACT:O	4:A:167:ACT:OXT[2_556]	0.00	2.20
4:A:167:ACT:C	4:A:167:ACT:O[2_556]	1.25	0.95
4:A:167:ACT:C	4:A:167:ACT:OXT[2_556]	1.25	0.95
4:A:167:ACT:O	4:A:167:ACT:O[2_556]	2.14	0.06
4:A:167:ACT:OXT	4:A:167:ACT:OXT[2_556]	2.15	0.05

5.3 Torsion angles

5.3.1 Protein backbone

In the following table, the Percentiles column shows the percent Ramachandran outliers of the chain as a percentile score with respect to all X-ray entries followed by that with respect to entries of similar resolution.

The Analysed column shows the number of residues for which the backbone conformation was analysed, and the total number of residues.

Mol	Chain	Analysed	Favoured	Allowed	Outliers	Percentiles	
1	A	166/158 (105%)	163 (98%)	3 (2%)	0	100	100

There are no Ramachandran outliers to report.

5.3.2 Protein sidechains [i](#)

In the following table, the Percentiles column shows the percent sidechain outliers of the chain as a percentile score with respect to all X-ray entries followed by that with respect to entries of similar resolution.

The Analysed column shows the number of residues for which the sidechain conformation was analysed, and the total number of residues.

Mol	Chain	Analysed	Rotameric	Outliers	Percentiles	
1	A	146/136 (107%)	146 (100%)	0	100	100

There are no protein residues with a non-rotameric sidechain to report.

Some sidechains can be flipped to improve hydrogen bonding and reduce clashes. There are no such sidechains identified.

5.3.3 RNA [i](#)

There are no RNA molecules in this entry.

5.4 Non-standard residues in protein, DNA, RNA chains [i](#)

There are no non-standard protein/DNA/RNA residues in this entry.

5.5 Carbohydrates [i](#)

There are no carbohydrates in this entry.

5.6 Ligand geometry [i](#)

Of 9 ligands modelled in this entry, 3 are monoatomic - leaving 6 for Mogul analysis.

In the following table, the Counts columns list the number of bonds (or angles) for which Mogul statistics could be retrieved, the number of bonds (or angles) that are observed in the model and the number of bonds (or angles) that are defined in the Chemical Component Dictionary. The Link column lists molecule types, if any, to which the group is linked. The Z score for a bond length (or angle) is the number of standard deviations the observed value is removed from the expected value. A bond length (or angle) with $|Z| > 2$ is considered an outlier worth inspection. RMSZ is the root-mean-square of all Z scores of the bond lengths (or angles).

Mol	Type	Chain	Res	Link	Bond lengths			Bond angles		
					Counts	RMSZ	# Z > 2	Counts	RMSZ	# Z > 2
4	ACT	A	164	-	1,3,3	6.03	1 (100%)	0,3,3	0.00	-
4	ACT	A	165	-	1,3,3	6.18	1 (100%)	0,3,3	0.00	-
4	ACT	A	166	-	1,3,3	5.64	1 (100%)	0,3,3	0.00	-
4	ACT	A	167	-	1,3,3	3.46	1 (100%)	0,3,3	0.00	-
5	APC	A	171	2	28,33,33	3.27	13 (46%)	27,52,52	2.08	4 (14%)
6	PH2	A	181	2	12,15,15	3.02	5 (41%)	10,21,21	5.67	7 (70%)

In the following table, the Chirals column lists the number of chiral outliers, the number of chiral centers analysed, the number of these observed in the model and the number defined in the Chemical Component Dictionary. Similar counts are reported in the Torsion and Rings columns. '-' means no outliers of that kind were identified.

Mol	Type	Chain	Res	Link	Chirals	Torsions	Rings
4	ACT	A	164	-	-	0/0/0/0	0/0/0/0
4	ACT	A	165	-	-	0/0/0/0	0/0/0/0
4	ACT	A	166	-	-	0/0/0/0	0/0/0/0
4	ACT	A	167	-	-	0/0/0/0	0/0/0/0
5	APC	A	171	2	-	0/15/38/38	0/3/3/3
6	PH2	A	181	2	-	0/0/11/11	0/2/2/2

All (22) bond length outliers are listed below:

Mol	Chain	Res	Type	Atoms	Z	Observed(Å)	Ideal(Å)
6	A	181	PH2	C3-N4	-5.90	1.35	1.45
5	A	171	APC	C8-N7	-5.57	1.24	1.34
6	A	181	PH2	C6-N6	-5.43	1.22	1.33
6	A	181	PH2	C10-N5	-4.85	1.26	1.34
5	A	171	APC	O4'-C4'	-4.50	1.34	1.45
5	A	171	APC	C2-N1	-3.22	1.27	1.33
5	A	171	APC	C2'-C3'	-2.83	1.46	1.53
5	A	171	APC	C5-C4	-2.81	1.34	1.40
5	A	171	APC	PA-O2A	-2.37	1.50	1.56
6	A	181	PH2	C6-N5	2.16	1.39	1.35

Continued on next page...

Continued from previous page...

Mol	Chain	Res	Type	Atoms	Z	Observed(Å)	Ideal(Å)
5	A	171	APC	C5-N7	2.32	1.47	1.39
5	A	171	APC	PA-O5'	3.18	1.62	1.57
5	A	171	APC	PG-O3B	3.19	1.64	1.60
4	A	167	ACT	CH3-C	3.46	1.53	1.48
6	A	181	PH2	C9-N1	3.49	1.45	1.38
5	A	171	APC	C2-N3	3.84	1.38	1.32
4	A	166	ACT	CH3-C	5.64	1.55	1.48
5	A	171	APC	C4-N3	5.90	1.44	1.35
4	A	164	ACT	CH3-C	6.03	1.56	1.48
4	A	165	ACT	CH3-C	6.18	1.56	1.48
5	A	171	APC	O4'-C1'	6.60	1.50	1.41
5	A	171	APC	C8-N9	9.24	1.48	1.36

All (11) bond angle outliers are listed below:

Mol	Chain	Res	Type	Atoms	Z	Observed(°)	Ideal(°)
5	A	171	APC	C4'-O4'-C1'	-7.77	101.73	109.83
6	A	181	PH2	N7-C6-N5	-7.65	113.27	125.43
6	A	181	PH2	C9-C8-N7	-7.15	113.30	123.47
5	A	171	APC	O2'-C2'-C3'	2.05	118.39	111.83
5	A	171	APC	C5-C6-N6	2.89	126.36	120.47
6	A	181	PH2	N6-C6-N5	3.35	122.52	117.25
5	A	171	APC	C1'-N9-C4	3.52	132.72	126.64
6	A	181	PH2	C6-N5-C10	4.15	123.82	114.50
6	A	181	PH2	N6-C6-N7	4.43	124.22	117.25
6	A	181	PH2	C8-N7-C6	8.94	128.92	116.06
6	A	181	PH2	C8-C9-C10	9.10	120.59	114.52

There are no chirality outliers.

There are no torsion outliers.

There are no ring outliers.

4 monomers are involved in 8 short contacts:

Mol	Chain	Res	Type	Clashes	Symm-Clashes
4	A	164	ACT	1	0
4	A	166	ACT	2	0
4	A	167	ACT	0	5
5	A	171	APC	1	0

5.7 Other polymers

There are no such residues in this entry.

5.8 Polymer linkage issues

There are no chain breaks in this entry.

6 Fit of model and data [i](#)

6.1 Protein, DNA and RNA chains [i](#)

In the following table, the column labelled ‘#RSRZ> 2’ contains the number (and percentage) of RSRZ outliers, followed by percent RSRZ outliers for the chain as percentile scores relative to all X-ray entries and entries of similar resolution. The OWAB column contains the minimum, median, 95th percentile and maximum values of the occupancy-weighted average B-factor per residue. The column labelled ‘Q< 0.9’ lists the number of (and percentage) of residues with an average occupancy less than 0.9.

Mol	Chain	Analysed	<RSRZ>	#RSRZ>2	OWAB(Å ²)	Q<0.9
1	A	158/158 (100%)	-0.61	0 100 100	5, 9, 22, 53	0

There are no RSRZ outliers to report.

6.2 Non-standard residues in protein, DNA, RNA chains [i](#)

There are no non-standard protein/DNA/RNA residues in this entry.

6.3 Carbohydrates [i](#)

There are no carbohydrates in this entry.

6.4 Ligands [i](#)

In the following table, the Atoms column lists the number of modelled atoms in the group and the number defined in the chemical component dictionary. The B-factors column lists the minimum, median, 95th percentile and maximum values of B factors of atoms in the group. The column labelled ‘Q< 0.9’ lists the number of atoms with occupancy less than 0.9.

Mol	Type	Chain	Res	Atoms	RSCC	RSR	B-factors(Å ²)	Q<0.9
4	ACT	A	167	4/4	0.17	0.37	39,59,67,67	2
4	ACT	A	165	4/4	0.89	0.12	20,21,22,23	0
4	ACT	A	166	4/4	0.93	0.14	23,34,38,50	0
4	ACT	A	164	4/4	0.93	0.12	14,21,22,37	0
6	PH2	A	181	14/14	0.98	0.05	5,6,8,12	0
5	APC	A	171	31/31	1.00	0.03	5,6,8,9	0
2	MG	A	162	1/1	1.00	0.03	7,7,7,7	0
2	MG	A	161	1/1	1.00	0.03	6,6,6,6	0
3	CL	A	163	1/1	1.00	0.04	15,15,15,15	0

6.5 Other polymers [i](#)

There are no such residues in this entry.