



# Full wwPDB X-ray Structure Validation Report ⓘ

Mar 11, 2018 – 12:01 am GMT

PDB ID : 4HQP  
Title : Alpha7 nicotinic receptor chimera and its complex with Alpha bungarotoxin  
Authors : Li, S.X.; Cheng, K.; Gomoto, R.; Bren, N.; Huang, S.; Sine, S.; Chen, L.  
Deposited on : 2012-10-25  
Resolution : 3.51 Å(reported)

This is a Full wwPDB X-ray Structure Validation Report for a publicly released PDB entry.

We welcome your comments at [validation@mail.wwpdb.org](mailto:validation@mail.wwpdb.org)

A user guide is available at

<https://www.wwpdb.org/validation/2017/XrayValidationReportHelp>

with specific help available everywhere you see the ⓘ symbol.

---

The following versions of software and data (see [references ⓘ](#)) were used in the production of this report:

MolProbity : 4.02b-467  
Mogul : 1.7.3 (157068), CSD as539be (2018)  
Xtriage (Phenix) : 1.13  
EDS : trunk30967  
Percentile statistics : 20171227.v01 (using entries in the PDB archive December 27th 2017)  
Refmac : 5.8.0158  
CCP4 : 7.0 (Gargrove)  
Ideal geometry (proteins) : Engh & Huber (2001)  
Ideal geometry (DNA, RNA) : Parkinson et al. (1996)  
Validation Pipeline (wwPDB-VP) : trunk30967

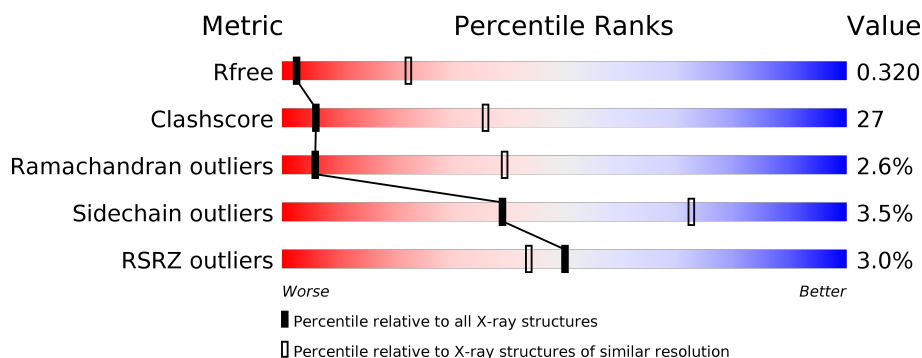
# 1 Overall quality at a glance

The following experimental techniques were used to determine the structure:

*X-RAY DIFFRACTION*

The reported resolution of this entry is 3.51 Å.

Percentile scores (ranging between 0-100) for global validation metrics of the entry are shown in the following graphic. The table shows the number of entries on which the scores are based.



Metric	Whole archive (#Entries)	Similar resolution (#Entries, resolution range(Å))
$R_{free}$	111664	1052 (3.62-3.42)
Clashscore	122126	1048 (3.60-3.44)
Ramachandran outliers	120053	1014 (3.60-3.44)
Sidechain outliers	120020	1015 (3.60-3.44)
RSRZ outliers	108989	1353 (3.64-3.40)

The table below summarises the geometric issues observed across the polymeric chains and their fit to the electron density. The red, orange, yellow and green segments on the lower bar indicate the fraction of residues that contain outliers for  $\geq 3$ , 2, 1 and 0 types of geometric quality criteria. A grey segment represents the fraction of residues that are not modelled. The numeric value for each fraction is indicated below the corresponding segment, with a dot representing fractions  $\leq 5\%$ . The upper red bar (where present) indicates the fraction of residues that have poor fit to the electron density. The numeric value is given above the bar.

Mol	Chain	Length	Quality of chain
1	A	202	<div> <div>2%</div> <div> <div></div> <div>49%</div> <div>47%</div> <div>• •</div> </div> </div>
1	B	202	<div> <div>%</div> <div> <div></div> <div>50%</div> <div>44%</div> <div>5%</div> </div> </div>
1	C	202	<div> <div>%</div> <div> <div></div> <div>56%</div> <div>40%</div> <div>• •</div> </div> </div>
1	D	202	<div> <div></div> <div> <div></div> <div>53%</div> <div>42%</div> <div>•</div> </div> </div>
1	E	202	<div> <div>2%</div> <div> <div></div> <div>50%</div> <div>44%</div> <div>5%</div> </div> </div>
2	F	73	<div> <div>%</div> <div> <div></div> <div>59%</div> <div>40%</div> <div>•</div> </div> </div>

Continued on next page...

*Continued from previous page...*

Mol	Chain	Length	Quality of chain
2	G	73	
2	H	73	
2	I	73	
2	J	73	

The following table lists non-polymeric compounds, carbohydrate monomers and non-standard residues in protein, DNA, RNA chains that are outliers for geometric or electron-density-fit criteria:

Mol	Type	Chain	Res	Chirality	Geometry	Clashes	Electron density
3	NAG	A	801	-	-	-	X
3	NAG	B	802	-	-	-	X

## 2 Entry composition

There are 3 unique types of molecules in this entry. The entry contains 11092 atoms, of which 0 are hydrogens and 0 are deuteriums.

In the tables below, the ZeroOcc column contains the number of atoms modelled with zero occupancy, the AltConf column contains the number of residues with at least one atom in alternate conformation and the Trace column contains the number of residues modelled with at most 2 atoms.

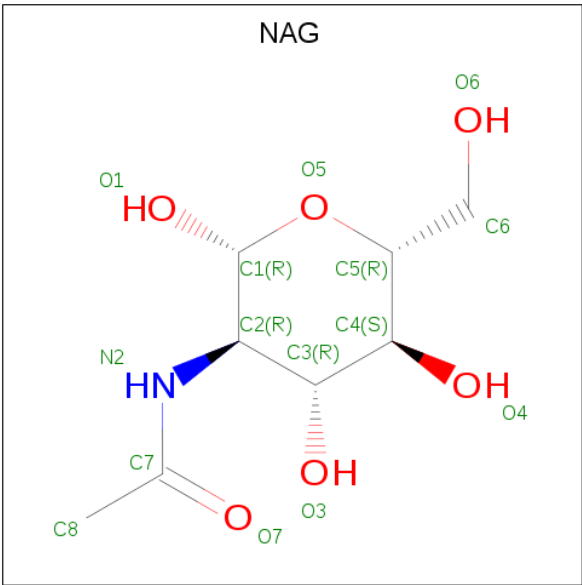
- Molecule 1 is a protein called Alpha7 nicotinic receptor chimera.

Mol	Chain	Residues	Atoms					ZeroOcc	AltConf	Trace
1	A	202	Total	C	N	O	S	0	0	0
			1647	1055	276	309	7			
1	B	202	Total	C	N	O	S	0	0	0
			1647	1055	276	309	7			
1	C	202	Total	C	N	O	S	0	0	0
			1647	1055	276	309	7			
1	D	202	Total	C	N	O	S	0	0	0
			1647	1055	276	309	7			
1	E	202	Total	C	N	O	S	0	0	0
			1647	1055	276	309	7			

- Molecule 2 is a protein called Alpha-bungarotoxin isoform V31.

Mol	Chain	Residues	Atoms					ZeroOcc	AltConf	Trace
2	F	73	Total	C	N	O	S	0	0	0
			549	338	96	104	11			
2	G	73	Total	C	N	O	S	0	0	0
			549	338	96	104	11			
2	H	73	Total	C	N	O	S	0	0	0
			549	338	96	104	11			
2	I	73	Total	C	N	O	S	0	0	0
			549	338	96	104	11			
2	J	73	Total	C	N	O	S	0	0	0
			549	338	96	104	11			

- Molecule 3 is N-ACETYL-D-GLUCOSAMINE (three-letter code: NAG) (formula: C<sub>8</sub>H<sub>15</sub>NO<sub>6</sub>).

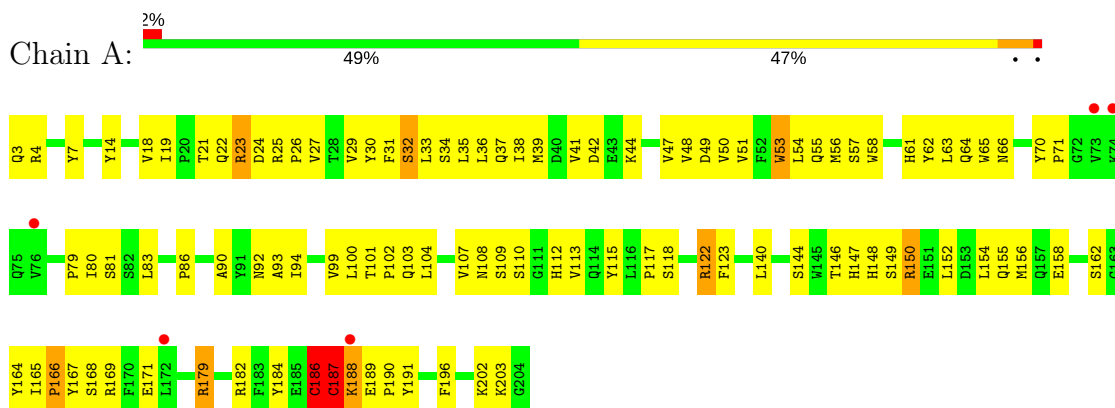


Mol	Chain	Residues	Atoms				ZeroOcc	AltConf
3	A	1	Total	C	N	O	0	0
			14	8	1	5		
3	A	1	Total	C	N	O	0	0
			14	8	1	5		
3	B	1	Total	C	N	O	0	0
			14	8	1	5		
3	B	1	Total	C	N	O	0	0
			14	8	1	5		
3	B	1	Total	C	N	O	0	0
			14	8	1	5		
3	C	1	Total	C	N	O	0	0
			14	8	1	5		
3	C	1	Total	C	N	O	0	0
			14	8	1	5		
3	D	1	Total	C	N	O	0	0
			14	8	1	5		

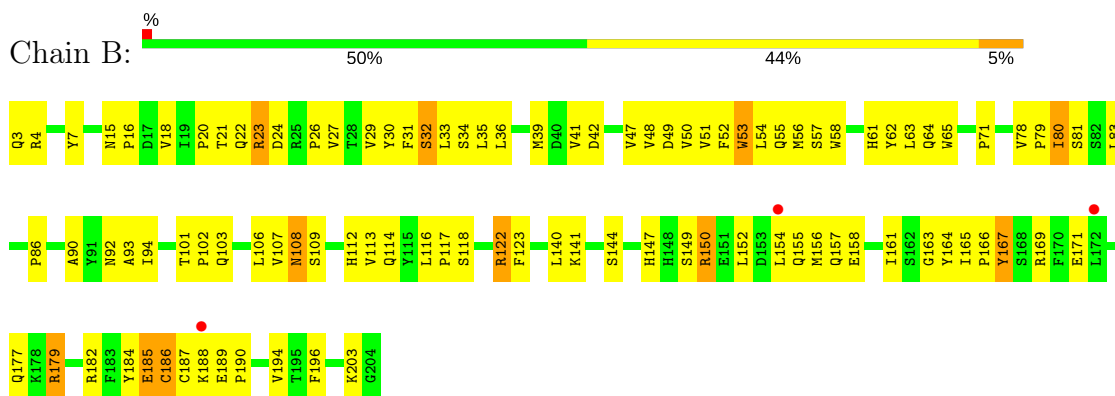
### 3 Residue-property plots

These plots are drawn for all protein, RNA and DNA chains in the entry. The first graphic for a chain summarises the proportions of the various outlier classes displayed in the second graphic. The second graphic shows the sequence view annotated by issues in geometry and electron density. Residues are color-coded according to the number of geometric quality criteria for which they contain at least one outlier: green = 0, yellow = 1, orange = 2 and red = 3 or more. A red dot above a residue indicates a poor fit to the electron density ( $RSRZ > 2$ ). Stretches of 2 or more consecutive residues without any outlier are shown as a green connector. Residues present in the sample, but not in the model, are shown in grey.

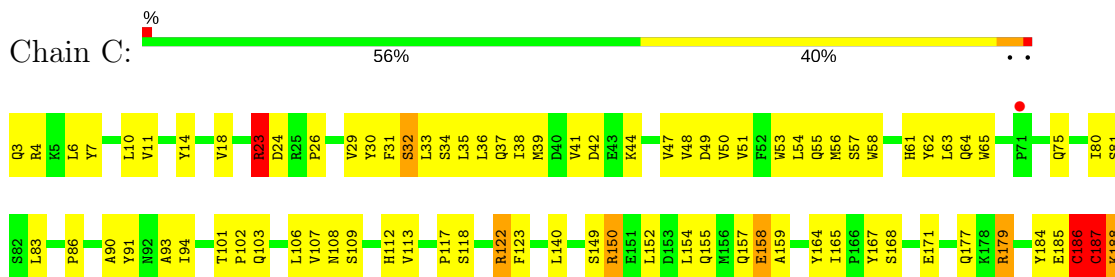
- Molecule 1: Alpha7 nicotinic receptor chimera

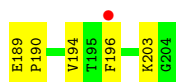


- Molecule 1: Alpha7 nicotinic receptor chimera

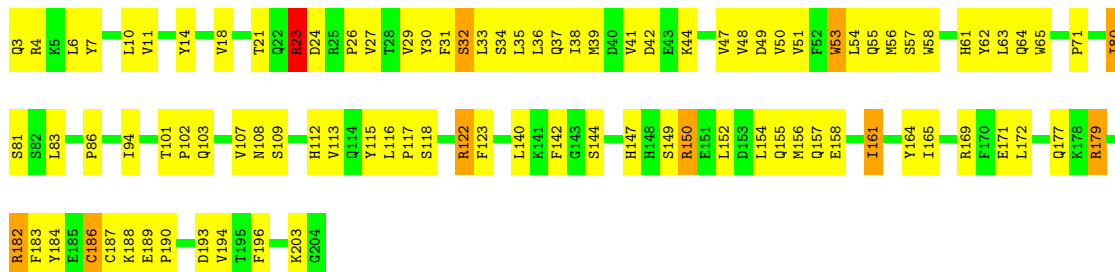


- Molecule 1: Alpha7 nicotinic receptor chimera

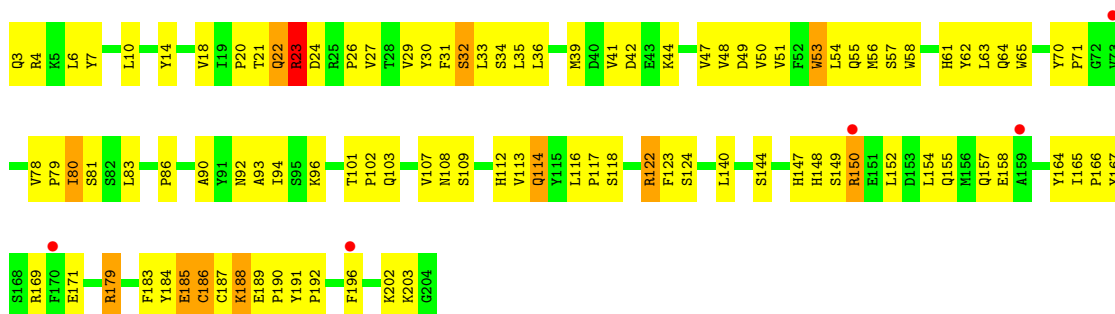




- Molecule 1: Alpha7 nicotinic receptor chimera



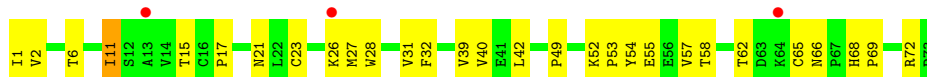
- Molecule 1: Alpha7 nicotinic receptor chimera



- Molecule 2: Alpha-bungarotoxin isoform V31



- Molecule 2: Alpha-bungarotoxin isoform V31



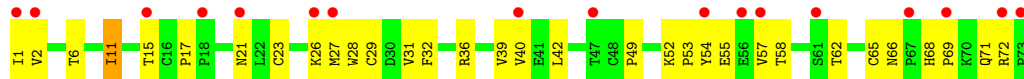
- Molecule 2: Alpha-bungarotoxin isoform V31



## ● Molecule 2: Alpha-bungarotoxin isoform V31



## ● Molecule 2: Alpha-bungarotoxin isoform V31



## 4 Data and refinement statistics

Property	Value	Source
Space group	P 65 2 2	Depositor
Cell constants a, b, c, $\alpha$ , $\beta$ , $\gamma$	142.15Å 142.15Å 518.13Å 90.00° 90.00° 120.00°	Depositor
Resolution (Å)	45.80 – 3.51 45.80 – 3.51	Depositor EDS
% Data completeness (in resolution range)	97.8 (45.80-3.51) 97.9 (45.80-3.51)	Depositor EDS
$R_{merge}$	(Not available)	Depositor
$R_{sym}$	(Not available)	Depositor
$\langle I/\sigma(I) \rangle$ <sup>1</sup>	4.19 (at 3.48Å)	Xtriage
Refinement program	CNS 1.3	Depositor
R, $R_{free}$	0.311 , 0.321 0.311 , 0.320	Depositor DCC
$R_{free}$ test set	3912 reflections (10.04%)	wwPDB-VP
Wilson B-factor (Å <sup>2</sup> )	137.1	Xtriage
Anisotropy	0.446	Xtriage
Bulk solvent $k_{sol}$ (e/Å <sup>3</sup> ), $B_{sol}$ (Å <sup>2</sup> )	0.34 , 106.8	EDS
L-test for twinning <sup>2</sup>	$\langle  L  \rangle = 0.47$ , $\langle L^2 \rangle = 0.30$	Xtriage
Estimated twinning fraction	No twinning to report.	Xtriage
$F_o, F_c$ correlation	0.90	EDS
Total number of atoms	11092	wwPDB-VP
Average B, all atoms (Å <sup>2</sup> )	159.0	wwPDB-VP

Xtriage's analysis on translational NCS is as follows: *The largest off-origin peak in the Patterson function is 2.19% of the height of the origin peak. No significant pseudotranslation is detected.*

<sup>1</sup>Intensities estimated from amplitudes.

<sup>2</sup>Theoretical values of  $\langle |L| \rangle$ ,  $\langle L^2 \rangle$  for acentric reflections are 0.5, 0.333 respectively for untwinned datasets, and 0.375, 0.2 for perfectly twinned datasets.

## 5 Model quality

### 5.1 Standard geometry

Bond lengths and bond angles in the following residue types are not validated in this section: NAG

The Z score for a bond length (or angle) is the number of standard deviations the observed value is removed from the expected value. A bond length (or angle) with  $|Z| > 5$  is considered an outlier worth inspection. RMSZ is the root-mean-square of all Z scores of the bond lengths (or angles).

Mol	Chain	Bond lengths		Bond angles	
		RMSZ	# $ Z  > 5$	RMSZ	# $ Z  > 5$
1	A	0.29	0/1691	0.51	0/2300
1	B	0.28	0/1691	0.52	0/2300
1	C	0.28	0/1691	0.52	0/2300
1	D	0.28	0/1691	0.51	0/2300
1	E	0.29	0/1691	0.52	0/2300
2	F	0.26	0/563	0.53	0/765
2	G	0.26	0/563	0.53	0/765
2	H	0.26	0/563	0.53	0/765
2	I	0.26	0/563	0.53	0/765
2	J	0.27	0/563	0.53	0/765
All	All	0.28	0/11270	0.52	0/15325

There are no bond length outliers.

There are no bond angle outliers.

There are no chirality outliers.

There are no planarity outliers.

### 5.2 Too-close contacts

In the following table, the Non-H and H(model) columns list the number of non-hydrogen atoms and hydrogen atoms in the chain respectively. The H(added) column lists the number of hydrogen atoms added and optimized by MolProbity. The Clashes column lists the number of clashes within the asymmetric unit, whereas Symm-Clashes lists symmetry related clashes.

Mol	Chain	Non-H	H(model)	H(added)	Clashes	Symm-Clashes
1	A	1647	0	1610	111	0
1	B	1647	0	1609	104	0
1	C	1647	0	1609	94	0

*Continued on next page...*

*Continued from previous page...*

Mol	Chain	Non-H	H(model)	H(added)	Clashes	Symm-Clashes
1	D	1647	0	1611	88	0
1	E	1647	0	1612	108	0
2	F	549	0	533	24	0
2	G	549	0	533	23	0
2	H	549	0	533	24	0
2	I	549	0	533	33	0
2	J	549	0	533	32	0
3	A	28	0	26	5	0
3	B	42	0	38	5	0
3	C	28	0	26	2	0
3	D	14	0	13	1	0
All	All	11092	0	10819	583	0

The all-atom clashscore is defined as the number of clashes found per 1000 atoms (including hydrogen atoms). The all-atom clashscore for this structure is 27.

All (583) close contacts within the same asymmetric unit are listed below, sorted by their clash magnitude.

Atom-1	Atom-2	Interatomic distance (Å)	Clash overlap (Å)
1:B:150:ARG:HB2	1:B:189:GLU:HG2	1.48	0.96
1:D:150:ARG:HB2	1:D:189:GLU:HG2	1.49	0.95
1:A:150:ARG:HB2	1:A:189:GLU:HG2	1.49	0.92
1:C:37:GLN:HB2	1:C:165:ILE:HD13	1.52	0.89
1:C:150:ARG:HB2	1:C:189:GLU:HG2	1.55	0.88
1:E:150:ARG:HB2	1:E:189:GLU:HG2	1.55	0.88
1:A:3:GLN:HG3	1:A:4:ARG:H	1.39	0.88
1:C:188:LYS:NZ	2:F:11:ILE:HD11	1.90	0.86
1:B:163:GLY:HA3	2:I:31:VAL:HG12	1.57	0.85
1:A:32:SER:HB3	1:A:55:GLN:HB3	1.58	0.84
1:C:32:SER:HB3	1:C:55:GLN:HB3	1.60	0.84
1:C:188:LYS:HZ3	2:F:11:ILE:HD11	1.42	0.84
1:B:32:SER:HB3	1:B:55:GLN:HB3	1.61	0.83
1:D:32:SER:HB3	1:D:55:GLN:HB3	1.60	0.83
1:E:148:HIS:HB3	1:E:191:TYR:CE2	2.15	0.81
1:E:32:SER:HB3	1:E:55:GLN:HB3	1.61	0.81
1:C:3:GLN:HG3	1:C:4:ARG:H	1.44	0.81
2:G:52:LYS:HG2	2:G:53:PRO:HD2	1.62	0.80
2:F:52:LYS:HG2	2:F:53:PRO:HD2	1.62	0.80
2:J:52:LYS:HG2	2:J:53:PRO:HD2	1.63	0.80
2:H:52:LYS:HG2	2:H:53:PRO:HD2	1.63	0.80
2:I:52:LYS:HG2	2:I:53:PRO:HD2	1.63	0.80

*Continued on next page...*

*Continued from previous page...*

Atom-1	Atom-2	Interatomic distance (Å)	Clash overlap (Å)
1:A:37:GLN:HB2	1:A:165:ILE:HD12	1.64	0.79
1:B:92:ASN:HD21	1:B:141:LYS:H	1.30	0.79
1:E:21:THR:HG22	1:E:27:VAL:HG23	1.69	0.75
2:J:27:MET:HE3	2:J:40:VAL:HG22	1.70	0.74
1:A:21:THR:HG22	1:A:27:VAL:HG23	1.70	0.73
1:A:3:GLN:HG3	1:A:4:ARG:N	2.02	0.73
1:A:47:VAL:HG21	1:A:94:ILE:HD11	1.71	0.72
1:B:101:THR:HG21	1:B:117:PRO:HA	1.69	0.72
2:F:27:MET:HE3	2:F:40:VAL:HG22	1.72	0.72
1:B:47:VAL:HG21	1:B:94:ILE:HD11	1.70	0.72
1:E:47:VAL:HG21	1:E:94:ILE:HD11	1.72	0.72
1:D:47:VAL:HG21	1:D:94:ILE:HD11	1.72	0.72
2:J:1:ILE:HG21	2:J:21:ASN:HA	1.72	0.71
1:A:101:THR:HG22	1:A:118:SER:H	1.56	0.71
2:G:27:MET:HE3	2:G:40:VAL:HG22	1.73	0.71
1:B:83:LEU:HD23	1:B:83:LEU:H	1.56	0.71
1:C:47:VAL:HG21	1:C:94:ILE:HD11	1.72	0.70
1:D:108:ASN:HB2	1:D:112:HIS:HB3	1.73	0.70
1:C:33:LEU:O	1:C:159:ALA:HB1	1.91	0.70
1:C:83:LEU:HD23	1:C:83:LEU:H	1.57	0.70
2:H:1:ILE:HG21	2:H:21:ASN:HA	1.74	0.70
1:A:101:THR:HG21	1:A:117:PRO:HA	1.73	0.70
1:B:108:ASN:HB2	1:B:112:HIS:HB3	1.72	0.70
1:E:83:LEU:H	1:E:83:LEU:HD23	1.57	0.69
2:F:1:ILE:HG21	2:F:21:ASN:HA	1.74	0.69
2:G:1:ILE:HG21	2:G:21:ASN:HA	1.74	0.69
1:A:83:LEU:HD23	1:A:83:LEU:H	1.57	0.69
1:D:83:LEU:HD23	1:D:83:LEU:H	1.58	0.68
1:E:108:ASN:HB2	1:E:112:HIS:HB3	1.74	0.68
3:B:801:NAG:H3	3:B:802:NAG:O5	1.93	0.68
1:A:108:ASN:HB2	1:A:112:HIS:HB3	1.74	0.68
1:D:80:ILE:HD12	1:D:81:SER:N	2.09	0.68
1:C:31:PHE:CZ	1:C:54:LEU:HD11	2.29	0.68
1:C:108:ASN:HB2	1:C:112:HIS:HB3	1.75	0.67
2:I:1:ILE:HG21	2:I:21:ASN:HA	1.74	0.67
1:E:101:THR:HG22	1:E:118:SER:H	1.60	0.67
1:B:101:THR:HG22	1:B:118:SER:H	1.59	0.67
1:B:23:ARG:H	1:B:23:ARG:HD3	1.61	0.66
1:A:80:ILE:HD12	1:A:81:SER:N	2.10	0.66
1:E:80:ILE:HD12	1:E:81:SER:N	2.11	0.66
1:A:44:LYS:HE3	1:B:169:ARG:HH12	1.62	0.65

*Continued on next page...*

*Continued from previous page...*

Atom-1	Atom-2	Interatomic distance (Å)	Clash overlap (Å)
1:C:80:ILE:HD12	1:C:81:SER:N	2.10	0.65
1:B:31:PHE:O	1:B:157:GLN:HG2	1.96	0.65
1:B:80:ILE:HD12	1:B:81:SER:N	2.10	0.65
1:C:159:ALA:HB2	1:C:177:GLN:OE1	1.97	0.65
1:D:31:PHE:CZ	1:D:54:LEU:HD11	2.31	0.65
1:A:101:THR:CG2	1:A:118:SER:H	2.10	0.65
1:C:101:THR:HG22	1:C:118:SER:H	1.61	0.65
1:B:101:THR:CG2	1:B:118:SER:H	2.09	0.65
1:E:188:LYS:NZ	1:E:188:LYS:HB3	2.12	0.65
1:E:101:THR:CG2	1:E:118:SER:H	2.11	0.64
1:E:22:GLN:HE21	1:E:22:GLN:H	1.43	0.64
1:C:101:THR:CG2	1:C:118:SER:H	2.10	0.64
1:E:191:TYR:CE1	2:J:36:ARG:HD3	2.32	0.64
1:A:23:ARG:O	1:A:24:ASP:HB2	1.98	0.64
1:A:146:THR:HB	1:B:106:LEU:HD21	1.77	0.64
1:E:101:THR:HG21	1:E:117:PRO:HA	1.79	0.64
1:C:101:THR:HG21	1:C:117:PRO:HA	1.80	0.63
2:H:27:MET:HE3	2:H:40:VAL:HG22	1.81	0.63
1:A:107:VAL:HG12	1:A:113:VAL:HG22	1.80	0.63
1:D:101:THR:CG2	1:D:118:SER:H	2.12	0.63
1:E:157:GLN:HG3	1:E:158:GLU:H	1.64	0.63
1:C:3:GLN:HG3	1:C:4:ARG:N	2.14	0.62
3:B:801:NAG:H82	3:B:802:NAG:H61	1.81	0.62
1:D:107:VAL:HG12	1:D:113:VAL:HG22	1.79	0.62
3:A:802:NAG:H82	3:A:802:NAG:H3	1.80	0.62
1:A:188:LYS:NZ	1:A:188:LYS:HB3	2.15	0.62
1:C:188:LYS:NZ	1:C:188:LYS:HB3	2.15	0.62
1:A:4:ARG:NH1	1:E:18:VAL:HG13	2.15	0.62
1:E:107:VAL:HG12	1:E:113:VAL:HG22	1.82	0.62
1:B:107:VAL:HG12	1:B:113:VAL:HG22	1.82	0.61
1:B:92:ASN:ND2	1:B:141:LYS:H	1.97	0.61
1:C:107:VAL:HG12	1:C:113:VAL:HG22	1.82	0.61
1:A:115:TYR:CZ	1:A:117:PRO:HB3	2.36	0.61
1:B:23:ARG:NH2	1:C:3:GLN:HB2	2.16	0.61
1:E:188:LYS:HB3	1:E:188:LYS:HZ3	1.64	0.60
1:D:101:THR:HG22	1:D:118:SER:H	1.65	0.60
1:D:188:LYS:HB3	1:D:188:LYS:NZ	2.17	0.60
1:A:188:LYS:HE2	2:I:71:GLN:CD	2.23	0.59
1:D:101:THR:HG21	1:D:117:PRO:HA	1.84	0.59
1:C:188:LYS:HB3	1:C:188:LYS:HZ3	1.65	0.59
1:A:30:TYR:HA	1:A:155:GLN:O	2.03	0.59

*Continued on next page...*

*Continued from previous page...*

Atom-1	Atom-2	Interatomic distance (Å)	Clash overlap (Å)
1:B:101:THR:CG2	1:B:117:PRO:HA	2.33	0.59
1:E:53:TRP:HB3	1:E:116:LEU:HD21	1.83	0.59
1:C:186:CYS:SG	1:C:187:CYS:N	2.75	0.59
1:E:35:LEU:HD22	1:E:164:TYR:HD2	1.66	0.59
1:B:188:LYS:NZ	1:B:188:LYS:HB3	2.17	0.59
1:C:54:LEU:O	1:C:117:PRO:HD2	2.03	0.59
1:C:30:TYR:HA	1:C:155:GLN:O	2.04	0.58
1:D:30:TYR:HA	1:D:155:GLN:O	2.04	0.58
1:B:30:TYR:HA	1:B:155:GLN:O	2.03	0.58
1:E:30:TYR:HA	1:E:155:GLN:O	2.04	0.58
1:E:165:ILE:HG23	1:E:167:TYR:CE1	2.38	0.58
1:A:169:ARG:HH12	1:E:44:LYS:HE3	1.69	0.57
1:D:101:THR:CG2	1:D:117:PRO:HA	2.33	0.57
1:A:21:THR:CG2	1:A:27:VAL:HG23	2.33	0.57
1:B:18:VAL:HG22	1:C:7:TYR:CD2	2.40	0.57
2:I:27:MET:HE3	2:I:40:VAL:HG22	1.87	0.57
1:D:18:VAL:HG22	1:E:7:TYR:CD2	2.39	0.57
1:A:31:PHE:CZ	1:A:54:LEU:HD11	2.39	0.57
1:B:23:ARG:O	1:B:24:ASP:HB2	2.04	0.57
1:B:83:LEU:HD23	1:B:83:LEU:N	2.20	0.57
1:A:101:THR:CG2	1:A:117:PRO:HA	2.34	0.57
1:C:165:ILE:HG23	1:C:167:TYR:CE1	2.40	0.57
1:E:92:ASN:ND2	1:E:123:PHE:HB3	2.19	0.57
1:D:188:LYS:HZ3	1:D:188:LYS:HB3	1.70	0.56
1:E:4:ARG:HG3	1:E:7:TYR:HD2	1.70	0.56
1:B:4:ARG:HG3	1:B:7:TYR:HD2	1.70	0.56
1:C:83:LEU:HD23	1:C:83:LEU:N	2.20	0.56
1:A:23:ARG:NH1	1:B:71:PRO:HB2	2.20	0.56
1:C:165:ILE:HG22	1:C:168:SER:N	2.20	0.56
1:A:83:LEU:HD23	1:A:83:LEU:N	2.21	0.56
1:C:106:LEU:HD12	1:C:106:LEU:N	2.21	0.56
1:E:188:LYS:HE2	2:J:71:GLN:CD	2.26	0.56
2:I:31:VAL:HG23	2:I:32:PHE:N	2.21	0.56
1:D:83:LEU:HD23	1:D:83:LEU:N	2.21	0.56
1:B:114:GLN:OE1	2:I:35:SER:HB2	2.05	0.56
1:D:156:MET:HE3	1:D:177:GLN:HG2	1.86	0.56
1:C:4:ARG:HG3	1:C:7:TYR:HD2	1.71	0.55
1:A:53:TRP:HE1	2:J:32:PHE:HE2	1.53	0.55
1:B:53:TRP:HB3	1:B:116:LEU:HD21	1.86	0.55
1:E:191:TYR:HE1	2:J:36:ARG:HD3	1.70	0.55
1:E:83:LEU:HD23	1:E:83:LEU:N	2.21	0.55

*Continued on next page...*

*Continued from previous page...*

Atom-1	Atom-2	Interatomic distance (Å)	Clash overlap (Å)
1:E:21:THR:CG2	1:E:27:VAL:HG23	2.36	0.55
2:G:31:VAL:HG23	2:G:32:PHE:CD2	2.41	0.55
1:A:4:ARG:HG3	1:A:7:TYR:HD2	1.70	0.55
1:A:110:SER:OG	3:A:802:NAG:H62	2.06	0.55
1:B:149:SER:OG	1:B:190:PRO:HG2	2.06	0.55
1:B:171:GLU:HB3	1:B:203:LYS:HE2	1.88	0.55
1:C:184:TYR:O	1:C:186:CYS:N	2.39	0.55
1:C:75:GLN:NE2	1:C:106:LEU:HD23	2.22	0.54
1:B:39:MET:HB2	1:B:49:ASP:HB3	1.90	0.54
2:F:31:VAL:HG23	2:F:32:PHE:CD2	2.42	0.54
1:A:165:ILE:HD13	1:E:124:SER:OG	2.07	0.54
2:G:31:VAL:HG23	2:G:32:PHE:N	2.22	0.54
1:A:39:MET:HB2	1:A:49:ASP:HB3	1.90	0.54
2:H:31:VAL:HG23	2:H:32:PHE:N	2.22	0.54
1:D:44:LYS:HE3	1:E:169:ARG:HH12	1.72	0.54
1:A:188:LYS:HZ3	2:I:11:ILE:HD11	1.73	0.54
2:J:31:VAL:HG23	2:J:32:PHE:CD2	2.43	0.54
2:H:68:HIS:ND1	2:H:69:PRO:HD2	2.23	0.54
3:B:801:NAG:C3	3:B:802:NAG:O5	2.55	0.54
1:D:179:ARG:HG3	1:D:179:ARG:HH11	1.73	0.54
1:D:35:LEU:HD22	1:D:164:TYR:HD2	1.73	0.54
2:H:31:VAL:HG23	2:H:32:PHE:CD2	2.43	0.54
1:B:21:THR:HG22	1:B:27:VAL:HG23	1.91	0.53
1:C:179:ARG:HG3	1:C:179:ARG:HH11	1.73	0.53
1:B:108:ASN:OD1	3:B:803:NAG:H2	2.09	0.53
1:D:4:ARG:HG3	1:D:7:TYR:HD2	1.71	0.53
1:E:114:GLN:C	1:E:114:GLN:HE21	2.10	0.53
1:C:39:MET:HB2	1:C:49:ASP:HB3	1.91	0.53
1:E:171:GLU:HB3	1:E:203:LYS:HE2	1.90	0.53
2:F:68:HIS:ND1	2:F:69:PRO:HD2	2.24	0.53
1:A:66:ASN:ND2	3:A:801:NAG:H82	2.23	0.53
2:J:31:VAL:HG23	2:J:32:PHE:N	2.23	0.53
1:E:179:ARG:HH11	1:E:179:ARG:HG3	1.73	0.53
2:F:31:VAL:HG23	2:F:32:PHE:N	2.23	0.53
1:C:31:PHE:HB2	1:C:154:LEU:HD21	1.91	0.53
1:E:31:PHE:HB2	1:E:154:LEU:HD21	1.91	0.53
1:D:115:TYR:CZ	1:D:117:PRO:HB3	2.43	0.53
1:B:179:ARG:HH11	1:B:179:ARG:HG3	1.73	0.53
1:A:186:CYS:SG	1:A:187:CYS:N	2.81	0.53
1:B:33:LEU:HD22	1:B:196:PHE:CE2	2.44	0.53
1:E:157:GLN:HG3	1:E:158:GLU:N	2.23	0.53

*Continued on next page...*

*Continued from previous page...*

Atom-1	Atom-2	Interatomic distance (Å)	Clash overlap (Å)
1:A:179:ARG:HH11	1:A:179:ARG:HG3	1.73	0.52
1:E:149:SER:OG	1:E:190:PRO:HG2	2.09	0.52
1:B:26:PRO:HB3	1:B:150:ARG:O	2.09	0.52
1:D:161:ILE:C	1:D:161:ILE:HD13	2.30	0.52
2:J:6:THR:HG23	2:J:42:LEU:HB2	1.92	0.52
2:G:68:HIS:ND1	2:G:69:PRO:HD2	2.24	0.52
2:F:6:THR:HG23	2:F:42:LEU:HB2	1.92	0.52
1:A:41:VAL:HG12	1:A:48:VAL:HG12	1.92	0.52
1:B:35:LEU:HD22	1:B:164:TYR:HD2	1.74	0.52
1:C:26:PRO:HB3	1:C:150:ARG:O	2.10	0.52
1:E:148:HIS:HB3	1:E:191:TYR:HE2	1.73	0.52
2:I:68:HIS:ND1	2:I:69:PRO:HD2	2.24	0.52
1:D:31:PHE:HB2	1:D:154:LEU:HD21	1.92	0.52
1:E:39:MET:HB2	1:E:49:ASP:HB3	1.90	0.52
1:E:53:TRP:HE1	2:H:32:PHE:HE2	1.58	0.52
1:A:79:PRO:HA	1:A:104:LEU:HD23	1.91	0.52
1:C:33:LEU:HD22	1:C:196:PHE:CE2	2.44	0.52
1:A:31:PHE:HB2	1:A:154:LEU:HD21	1.91	0.52
1:C:18:VAL:HG13	1:D:4:ARG:HG2	1.91	0.52
1:E:26:PRO:HB3	1:E:150:ARG:O	2.10	0.52
1:E:41:VAL:HG12	1:E:48:VAL:HG12	1.91	0.52
1:D:33:LEU:HD23	1:D:34:SER:N	2.25	0.52
1:D:39:MET:HB2	1:D:49:ASP:HB3	1.90	0.52
1:E:31:PHE:CE1	1:E:54:LEU:HD21	2.44	0.52
1:C:41:VAL:HG12	1:C:48:VAL:HG12	1.92	0.52
2:F:57:VAL:HG12	2:F:58:THR:N	2.25	0.52
2:I:31:VAL:HG23	2:I:32:PHE:CD2	2.44	0.52
1:D:157:GLN:HG2	1:D:158:GLU:H	1.75	0.51
1:C:188:LYS:HE2	2:F:71:GLN:NE2	2.25	0.51
2:H:6:THR:HG23	2:H:42:LEU:HB2	1.93	0.51
1:D:26:PRO:HB3	1:D:150:ARG:O	2.11	0.51
1:A:7:TYR:CD2	1:E:18:VAL:HG22	2.46	0.51
1:B:182:ARG:HH21	2:G:39:VAL:HG11	1.76	0.51
1:C:33:LEU:HD23	1:C:34:SER:N	2.26	0.51
1:D:164:TYR:CD2	1:D:172:LEU:HD11	2.46	0.51
1:D:182:ARG:HH11	1:D:182:ARG:HB2	1.76	0.51
2:G:6:THR:HG23	2:G:42:LEU:HB2	1.93	0.51
1:D:188:LYS:HE2	2:H:71:GLN:CG	2.40	0.51
2:I:57:VAL:HG12	2:I:58:THR:N	2.26	0.51
1:A:148:HIS:HB3	1:A:191:TYR:CE1	2.46	0.51
1:B:31:PHE:HB2	1:B:154:LEU:HD21	1.91	0.51

*Continued on next page...*

*Continued from previous page...*

Atom-1	Atom-2	Interatomic distance (Å)	Clash overlap (Å)
1:C:18:VAL:HG22	1:D:7:TYR:CD2	2.45	0.51
1:A:7:TYR:CE2	1:E:18:VAL:HG22	2.46	0.51
2:G:57:VAL:HG12	2:G:58:THR:N	2.25	0.51
1:B:33:LEU:HD23	1:B:34:SER:N	2.26	0.51
1:D:41:VAL:HG12	1:D:48:VAL:HG12	1.92	0.51
1:B:101:THR:OG1	1:B:102:PRO:HD2	2.11	0.50
1:B:41:VAL:HG12	1:B:48:VAL:HG12	1.92	0.50
1:C:101:THR:OG1	1:C:102:PRO:HD2	2.11	0.50
1:C:33:LEU:HD13	1:C:196:PHE:CD2	2.46	0.50
1:A:188:LYS:HE2	2:I:71:GLN:CG	2.41	0.50
1:E:101:THR:OG1	1:E:102:PRO:HD2	2.12	0.50
2:H:26:LYS:HD2	2:H:55:GLU:OE2	2.12	0.50
3:A:802:NAG:C8	3:A:802:NAG:H3	2.40	0.50
1:B:54:LEU:CD2	1:B:56:MET:HG3	2.41	0.50
1:D:35:LEU:HD22	1:D:164:TYR:CD2	2.46	0.50
2:I:6:THR:HG23	2:I:42:LEU:HB2	1.92	0.50
2:J:62:THR:HB	2:J:65:CYS:HB3	1.93	0.50
2:J:68:HIS:ND1	2:J:69:PRO:HD2	2.25	0.50
3:D:801:NAG:H5	3:D:801:NAG:N2	2.27	0.50
2:I:62:THR:HB	2:I:65:CYS:HB3	1.94	0.50
2:G:62:THR:HB	2:G:65:CYS:HB3	1.93	0.50
1:A:37:GLN:NE2	1:A:165:ILE:HD12	2.27	0.50
1:A:26:PRO:HB3	1:A:150:ARG:O	2.12	0.50
1:A:33:LEU:HD23	1:A:34:SER:N	2.27	0.50
2:G:26:LYS:HD2	2:G:55:GLU:OE2	2.12	0.50
2:G:72:ARG:HB2	2:G:72:ARG:HH11	1.77	0.50
1:C:152:LEU:HD23	1:C:152:LEU:C	2.32	0.50
1:C:23:ARG:O	1:C:24:ASP:HB2	2.12	0.49
1:E:101:THR:CG2	1:E:117:PRO:HA	2.42	0.49
2:J:57:VAL:HG12	2:J:58:THR:N	2.27	0.49
1:A:188:LYS:HB3	1:A:188:LYS:HZ3	1.76	0.49
2:H:57:VAL:HG12	2:H:58:THR:N	2.27	0.49
2:H:72:ARG:HH11	2:H:72:ARG:HB2	1.77	0.49
1:E:33:LEU:HD23	1:E:34:SER:N	2.26	0.49
2:H:62:THR:HB	2:H:65:CYS:HB3	1.94	0.49
2:I:23:CYS:HB3	2:I:66:ASN:OD1	2.13	0.49
1:D:183:PHE:CZ	1:D:190:PRO:HB3	2.47	0.49
1:A:152:LEU:C	1:A:152:LEU:HD23	2.33	0.49
1:A:186:CYS:C	1:A:187:CYS:SG	2.91	0.49
1:C:44:LYS:HE3	1:D:169:ARG:HH12	1.77	0.49
1:D:18:VAL:HG22	1:E:7:TYR:CE2	2.46	0.49

*Continued on next page...*

*Continued from previous page...*

Atom-1	Atom-2	Interatomic distance (Å)	Clash overlap (Å)
1:A:37:GLN:HE21	1:A:165:ILE:HD12	1.77	0.49
1:C:165:ILE:HG23	1:C:167:TYR:CD1	2.48	0.49
1:D:101:THR:OG1	1:D:102:PRO:HD2	2.12	0.49
1:A:101:THR:OG1	1:A:102:PRO:HD2	2.13	0.49
2:J:26:LYS:HD2	2:J:55:GLU:OE2	2.13	0.49
1:B:36:LEU:HD13	1:B:163:GLY:O	2.13	0.49
1:E:184:TYR:CE1	2:J:39:VAL:HG22	2.48	0.49
2:F:6:THR:HA	2:F:11:ILE:HG22	1.95	0.49
2:I:23:CYS:HB3	2:I:66:ASN:CG	2.33	0.49
1:B:152:LEU:HD23	1:B:152:LEU:C	2.33	0.49
1:C:18:VAL:HG13	1:D:4:ARG:NH1	2.28	0.49
1:A:37:GLN:CB	1:A:165:ILE:HD12	2.39	0.48
1:C:101:THR:CG2	1:C:117:PRO:HA	2.42	0.48
1:B:18:VAL:HG22	1:C:7:TYR:CE2	2.48	0.48
1:E:152:LEU:HD23	1:E:152:LEU:C	2.34	0.48
1:E:33:LEU:HD22	1:E:196:PHE:CE2	2.48	0.48
1:B:33:LEU:HD13	1:B:196:PHE:CD2	2.48	0.48
2:F:62:THR:HB	2:F:65:CYS:HB3	1.94	0.48
2:F:72:ARG:HH11	2:F:72:ARG:HB2	1.78	0.48
2:G:23:CYS:HB3	2:G:66:ASN:CG	2.33	0.48
2:I:26:LYS:HD2	2:I:55:GLU:OE2	2.14	0.48
2:J:23:CYS:HB3	2:J:66:ASN:OD1	2.14	0.48
1:B:90:ALA:HB3	1:B:93:ALA:HB2	1.95	0.48
1:D:152:LEU:C	1:D:152:LEU:HD23	2.33	0.48
1:D:33:LEU:HD22	1:D:196:PHE:CE2	2.48	0.48
1:E:80:ILE:HG13	1:E:103:GLN:HB3	1.96	0.48
2:F:26:LYS:HD2	2:F:55:GLU:OE2	2.13	0.48
1:D:33:LEU:C	1:D:33:LEU:HD23	2.34	0.48
2:I:72:ARG:HH11	2:I:72:ARG:HB2	1.78	0.48
1:D:188:LYS:HE2	2:H:71:GLN:CD	2.34	0.48
1:E:56:MET:HE1	1:E:86:PRO:HB2	1.95	0.48
2:H:23:CYS:HB3	2:H:66:ASN:CG	2.34	0.48
1:C:49:ASP:HA	1:C:122:ARG:HG3	1.96	0.48
1:D:149:SER:OG	1:D:190:PRO:HG2	2.13	0.48
1:A:90:ALA:HB3	1:A:93:ALA:HB2	1.95	0.47
1:D:49:ASP:HA	1:D:122:ARG:HG3	1.96	0.47
1:B:23:ARG:N	1:B:23:ARG:HD3	2.25	0.47
2:J:72:ARG:HB2	2:J:72:ARG:HH11	1.78	0.47
1:B:165:ILE:HG23	1:B:167:TYR:CE1	2.49	0.47
1:A:22:GLN:O	1:A:23:ARG:C	2.52	0.47
1:D:53:TRP:HB3	1:D:116:LEU:HD11	1.94	0.47

*Continued on next page...*

*Continued from previous page...*

Atom-1	Atom-2	Interatomic distance (Å)	Clash overlap (Å)
1:E:20:PRO:O	1:E:27:VAL:HG22	2.13	0.47
1:E:29:VAL:HG12	1:E:58:TRP:HB3	1.97	0.47
2:I:27:MET:HE3	2:I:69:PRO:HG2	1.96	0.47
1:A:29:VAL:HG12	1:A:58:TRP:HB3	1.96	0.47
1:B:49:ASP:HA	1:B:122:ARG:HG3	1.97	0.47
1:B:80:ILE:HG13	1:B:103:GLN:HB3	1.96	0.47
1:E:22:GLN:NE2	1:E:22:GLN:H	2.12	0.47
2:J:23:CYS:HB3	2:J:66:ASN:CG	2.34	0.47
1:A:184:TYR:HE1	2:I:39:VAL:HG22	1.78	0.47
1:B:33:LEU:C	1:B:33:LEU:HD23	2.35	0.47
1:C:33:LEU:C	1:C:33:LEU:HD23	2.34	0.47
1:A:99:VAL:O	1:E:96:LYS:HE2	2.14	0.47
2:G:23:CYS:HB3	2:G:66:ASN:OD1	2.14	0.47
1:A:171:GLU:HB3	1:A:203:LYS:HE2	1.95	0.47
1:A:56:MET:HE1	1:A:86:PRO:HB2	1.97	0.47
1:A:80:ILE:HG13	1:A:103:GLN:HB3	1.96	0.47
1:B:154:LEU:HD22	1:B:194:VAL:HG23	1.97	0.47
1:A:184:TYR:O	2:I:68:HIS:HE1	1.98	0.47
1:B:20:PRO:O	1:B:27:VAL:HG22	2.15	0.47
1:C:29:VAL:HG12	1:C:58:TRP:HB3	1.97	0.47
1:B:23:ARG:HH21	1:C:3:GLN:HB2	1.79	0.47
1:E:49:ASP:HA	1:E:122:ARG:HG3	1.96	0.47
1:E:35:LEU:HD22	1:E:164:TYR:CD2	2.48	0.47
1:A:33:LEU:HD23	1:A:33:LEU:C	2.36	0.46
1:C:140:LEU:N	1:C:140:LEU:HD12	2.29	0.46
1:D:3:GLN:HG3	1:D:4:ARG:N	2.31	0.46
2:F:23:CYS:HB3	2:F:66:ASN:OD1	2.15	0.46
2:J:6:THR:HA	2:J:11:ILE:HG22	1.97	0.46
1:D:140:LEU:HD12	1:D:140:LEU:N	2.30	0.46
1:D:23:ARG:O	1:D:24:ASP:HB2	2.16	0.46
1:D:31:PHE:CE1	1:D:54:LEU:HD11	2.50	0.46
1:E:148:HIS:HB3	1:E:191:TYR:CD2	2.48	0.46
1:E:22:GLN:N	1:E:22:GLN:HE21	2.12	0.46
1:E:61:HIS:O	1:E:64:GLN:NE2	2.49	0.46
2:I:6:THR:HA	2:I:11:ILE:HG22	1.97	0.46
1:E:54:LEU:O	1:E:117:PRO:HD2	2.16	0.46
1:B:156:MET:HE3	1:B:177:GLN:HG2	1.98	0.46
1:A:18:VAL:HG22	1:B:7:TYR:CD2	2.50	0.46
1:E:166:PRO:O	1:E:203:LYS:NZ	2.49	0.46
1:E:191:TYR:HD1	2:J:36:ARG:NH1	2.13	0.46
2:H:6:THR:HA	2:H:11:ILE:HG22	1.98	0.46

*Continued on next page...*

*Continued from previous page...*

Atom-1	Atom-2	Interatomic distance (Å)	Clash overlap (Å)
1:A:140:LEU:N	1:A:140:LEU:HD12	2.30	0.46
1:A:182:ARG:HD3	1:A:184:TYR:OH	2.15	0.46
1:B:33:LEU:HD22	1:B:196:PHE:CZ	2.51	0.46
1:C:56:MET:HE1	1:C:86:PRO:HB2	1.96	0.46
2:F:23:CYS:HB3	2:F:66:ASN:CG	2.35	0.46
1:B:166:PRO:O	1:B:203:LYS:NZ	2.47	0.46
1:C:33:LEU:HD22	1:C:196:PHE:CZ	2.51	0.46
1:A:49:ASP:HA	1:A:122:ARG:HG3	1.97	0.46
1:C:80:ILE:HG13	1:C:103:GLN:HB3	1.97	0.46
1:B:140:LEU:N	1:B:140:LEU:HD12	2.29	0.46
1:B:18:VAL:HG13	1:C:4:ARG:HG2	1.97	0.46
1:D:54:LEU:O	1:D:117:PRO:HD2	2.16	0.46
1:E:90:ALA:HB3	1:E:93:ALA:HB2	1.97	0.46
1:D:56:MET:HE1	1:D:86:PRO:HB2	1.97	0.45
1:E:140:LEU:N	1:E:140:LEU:HD12	2.31	0.45
1:D:18:VAL:HG13	1:E:4:ARG:HG2	1.99	0.45
2:I:49:PRO:HG2	2:I:57:VAL:HG11	1.99	0.45
1:B:29:VAL:HG12	1:B:58:TRP:HB3	1.98	0.45
1:E:33:LEU:HD23	1:E:33:LEU:C	2.36	0.45
2:J:72:ARG:HB2	2:J:72:ARG:NH1	2.32	0.45
1:D:80:ILE:HG13	1:D:103:GLN:HB3	1.97	0.45
1:E:144:SER:OG	1:E:147:HIS:HB2	2.16	0.45
2:H:23:CYS:HB3	2:H:66:ASN:OD1	2.15	0.45
1:A:18:VAL:HG13	1:B:4:ARG:NH1	2.32	0.45
1:E:80:ILE:CG1	1:E:103:GLN:HB3	2.47	0.45
2:F:54:TYR:H	2:F:54:TYR:HD1	1.62	0.45
1:A:24:ASP:O	1:A:25:ARG:HD2	2.16	0.45
1:A:54:LEU:O	1:A:117:PRO:HD2	2.17	0.45
2:G:6:THR:HA	2:G:11:ILE:HG22	1.98	0.45
1:A:156:MET:HE3	1:A:158:GLU:H	1.82	0.45
1:A:61:HIS:O	1:A:64:GLN:NE2	2.49	0.45
1:B:23:ARG:CD	1:B:23:ARG:H	2.28	0.45
1:D:29:VAL:HG12	1:D:58:TRP:HB3	1.98	0.45
2:G:72:ARG:HB2	2:G:72:ARG:NH1	2.31	0.45
2:H:54:TYR:HD1	2:H:54:TYR:H	1.63	0.45
1:D:21:THR:HG22	1:D:27:VAL:HG23	1.98	0.45
1:A:166:PRO:C	1:A:168:SER:H	2.21	0.45
1:C:90:ALA:HB3	1:C:93:ALA:HB2	1.99	0.45
1:D:171:GLU:HB3	1:D:203:LYS:HE2	1.98	0.45
1:B:163:GLY:CA	2:I:31:VAL:HG12	2.40	0.45
1:B:61:HIS:O	1:B:64:GLN:NE2	2.49	0.44

*Continued on next page...*

*Continued from previous page...*

Atom-1	Atom-2	Interatomic distance (Å)	Clash overlap (Å)
1:E:33:LEU:HD13	1:E:196:PHE:CD2	2.52	0.44
1:E:54:LEU:CD2	1:E:56:MET:HG3	2.47	0.44
1:A:162:SER:HB3	2:J:29:CYS:O	2.16	0.44
1:B:56:MET:HE1	1:B:86:PRO:HB2	1.98	0.44
1:E:42:ASP:HB3	1:E:47:VAL:HG12	1.99	0.44
2:G:49:PRO:HG2	2:G:57:VAL:HG11	2.00	0.44
2:H:72:ARG:NH1	2:H:72:ARG:HB2	2.32	0.44
1:A:80:ILE:CG1	1:A:103:GLN:HB3	2.47	0.44
1:A:23:ARG:O	1:A:24:ASP:CB	2.65	0.44
1:B:31:PHE:CE1	1:B:54:LEU:HD21	2.51	0.44
1:B:80:ILE:CG1	1:B:103:GLN:HB3	2.47	0.44
1:A:184:TYR:CE1	2:I:39:VAL:HG22	2.52	0.44
1:C:164:TYR:HE1	1:C:168:SER:HB3	1.82	0.44
1:A:188:LYS:NZ	2:I:11:ILE:HD11	2.31	0.44
2:I:72:ARG:NH1	2:I:72:ARG:HB2	2.33	0.44
1:A:115:TYR:CE2	1:A:117:PRO:HG3	2.52	0.44
1:A:90:ALA:CB	1:A:93:ALA:HB2	2.47	0.44
1:D:142:PHE:O	1:D:193:ASP:HB2	2.17	0.44
2:F:72:ARG:NH1	2:F:72:ARG:HB2	2.33	0.44
2:G:2:VAL:HG22	2:G:15:THR:HG22	2.00	0.44
1:A:149:SER:OG	1:A:190:PRO:HG2	2.17	0.44
1:A:42:ASP:HB3	1:A:47:VAL:HG12	2.00	0.44
1:D:42:ASP:HB3	1:D:47:VAL:HG12	1.99	0.44
1:C:18:VAL:CG1	1:D:4:ARG:HG2	2.47	0.44
1:D:36:LEU:O	1:D:165:ILE:HD13	2.17	0.44
2:H:49:PRO:HG2	2:H:57:VAL:HG11	1.98	0.44
1:B:42:ASP:HB3	1:B:47:VAL:HG12	2.00	0.43
1:C:35:LEU:HD23	1:C:36:LEU:N	2.33	0.43
1:D:61:HIS:O	1:D:64:GLN:NE2	2.48	0.43
1:B:184:TYR:O	1:B:186:CYS:N	2.46	0.43
2:G:54:TYR:H	2:G:54:TYR:HD1	1.63	0.43
1:A:166:PRO:O	1:A:168:SER:N	2.51	0.43
3:B:801:NAG:C8	3:B:802:NAG:H61	2.48	0.43
1:C:61:HIS:O	1:C:64:GLN:NE2	2.49	0.43
1:E:35:LEU:HD23	1:E:36:LEU:N	2.33	0.43
2:J:54:TYR:HD1	2:J:54:TYR:H	1.63	0.43
1:A:57:SER:HB2	1:A:112:HIS:CE1	2.54	0.43
1:E:179:ARG:NH1	1:E:179:ARG:HG3	2.34	0.43
1:E:191:TYR:CD1	2:J:36:ARG:HD3	2.54	0.43
1:B:161:ILE:O	1:B:161:ILE:HG12	2.18	0.43
1:B:33:LEU:HG	1:B:52:PHE:HD2	1.83	0.43

*Continued on next page...*

*Continued from previous page...*

Atom-1	Atom-2	Interatomic distance (Å)	Clash overlap (Å)
1:E:63:LEU:O	1:E:64:GLN:HB3	2.19	0.43
1:A:31:PHE:CE1	1:A:54:LEU:HD11	2.53	0.43
1:A:70:TYR:HA	1:A:71:PRO:HD2	1.88	0.43
1:D:35:LEU:HD23	1:D:36:LEU:N	2.34	0.43
1:B:18:VAL:HG13	1:C:4:ARG:NH1	2.34	0.43
1:B:154:LEU:HD22	1:B:194:VAL:CG2	2.48	0.43
1:C:80:ILE:CG1	1:C:103:GLN:HB3	2.48	0.43
1:C:157:GLN:O	1:C:158:GLU:C	2.57	0.43
1:E:23:ARG:O	1:E:24:ASP:HB2	2.17	0.43
1:B:35:LEU:HD22	1:B:164:TYR:CD2	2.52	0.43
1:D:80:ILE:CG1	1:D:103:GLN:HB3	2.49	0.43
1:E:56:MET:CE	1:E:86:PRO:HB2	2.49	0.43
2:J:52:LYS:CG	2:J:53:PRO:HD2	2.44	0.43
1:B:32:SER:HB2	1:B:157:GLN:CG	2.49	0.43
1:C:75:GLN:HE22	1:C:106:LEU:HD23	1.83	0.43
1:C:36:LEU:O	1:C:164:TYR:HA	2.19	0.43
1:D:57:SER:HB2	1:D:112:HIS:CE1	2.54	0.43
1:E:90:ALA:CB	1:E:93:ALA:HB2	2.49	0.43
2:I:54:TYR:HD1	2:I:54:TYR:H	1.62	0.43
2:J:49:PRO:HG2	2:J:57:VAL:HG11	2.00	0.43
1:B:22:GLN:O	1:B:23:ARG:C	2.56	0.43
1:E:184:TYR:HE1	2:J:39:VAL:HG22	1.84	0.43
1:C:171:GLU:HB3	1:C:203:LYS:HE2	1.99	0.42
1:B:35:LEU:HD23	1:B:36:LEU:N	2.34	0.42
1:B:57:SER:HB2	1:B:112:HIS:CE1	2.54	0.42
2:F:49:PRO:HG2	2:F:57:VAL:HG11	2.01	0.42
1:A:33:LEU:HD22	1:A:196:PHE:CE2	2.54	0.42
1:C:179:ARG:HG3	1:C:179:ARG:NH1	2.34	0.42
1:C:186:CYS:C	1:C:187:CYS:SG	2.98	0.42
1:C:18:VAL:HG22	1:D:7:TYR:CE2	2.54	0.42
1:C:42:ASP:HB3	1:C:47:VAL:HG12	2.01	0.42
1:D:63:LEU:O	1:D:64:GLN:HB3	2.20	0.42
2:J:27:MET:HA	2:J:39:VAL:O	2.20	0.42
1:D:65:TRP:CE2	1:D:109:SER:HA	2.55	0.42
1:E:191:TYR:HA	1:E:192:PRO:HD2	1.92	0.42
2:F:28:TRP:CD1	2:F:28:TRP:N	2.88	0.42
1:A:35:LEU:HD23	1:A:36:LEU:N	2.34	0.42
1:B:157:GLN:HB2	1:B:158:GLU:OE1	2.19	0.42
1:B:179:ARG:HG3	1:B:179:ARG:NH1	2.34	0.42
1:E:6:LEU:HG	1:E:10:LEU:HD11	2.02	0.42
2:F:27:MET:HA	2:F:39:VAL:O	2.20	0.42

*Continued on next page...*

*Continued from previous page...*

Atom-1	Atom-2	Interatomic distance (Å)	Clash overlap (Å)
1:A:169:ARG:NH1	1:E:44:LYS:HG3	2.35	0.42
1:A:63:LEU:O	1:A:64:GLN:HB3	2.20	0.42
1:B:144:SER:OG	1:B:147:HIS:HB2	2.19	0.42
1:B:53:TRP:HE3	1:B:53:TRP:N	2.17	0.42
1:D:3:GLN:N	1:D:71:PRO:HG2	2.35	0.42
1:E:184:TYR:O	1:E:186:CYS:N	2.48	0.42
1:E:70:TYR:HA	1:E:71:PRO:HD2	1.89	0.42
1:B:123:PHE:N	1:B:123:PHE:CD1	2.88	0.42
1:C:123:PHE:CD1	1:C:123:PHE:N	2.88	0.42
1:A:169:ARG:HD2	1:A:202:LYS:HE3	2.02	0.42
1:A:19:ILE:O	1:A:19:ILE:HG23	2.20	0.42
1:B:56:MET:CE	1:B:86:PRO:HB2	2.50	0.42
1:C:3:GLN:CG	1:C:4:ARG:H	2.24	0.42
1:D:179:ARG:NH1	1:D:179:ARG:HG3	2.33	0.42
1:E:3:GLN:NE2	1:E:4:ARG:HB2	2.35	0.42
1:A:123:PHE:CD1	1:A:123:PHE:N	2.88	0.42
1:A:35:LEU:HD22	1:A:164:TYR:HD2	1.85	0.42
1:B:185:GLU:O	1:B:186:CYS:HB3	2.20	0.42
1:C:188:LYS:NZ	2:F:11:ILE:CD1	2.73	0.42
1:C:57:SER:HB2	1:C:112:HIS:CE1	2.55	0.42
1:D:18:VAL:HG13	1:E:4:ARG:NH1	2.35	0.42
2:I:2:VAL:HG22	2:I:15:THR:HG22	2.02	0.42
1:A:18:VAL:HG22	1:B:7:TYR:CE2	2.55	0.41
1:C:165:ILE:HD12	1:C:165:ILE:N	2.33	0.41
1:C:56:MET:CE	1:C:86:PRO:HB2	2.50	0.41
1:E:116:LEU:C	1:E:116:LEU:HD23	2.40	0.41
1:A:32:SER:HB3	1:A:55:GLN:CB	2.40	0.41
1:B:65:TRP:CE2	1:B:109:SER:HA	2.55	0.41
1:E:57:SER:HB2	1:E:112:HIS:CE1	2.55	0.41
1:E:185:GLU:O	1:E:186:CYS:HB3	2.20	0.41
2:J:2:VAL:HG22	2:J:15:THR:HG22	2.01	0.41
1:A:18:VAL:HG13	1:B:4:ARG:HG2	2.03	0.41
1:A:4:ARG:HG2	1:E:18:VAL:HG13	2.01	0.41
1:A:14:TYR:CE1	1:A:83:LEU:HA	2.56	0.41
1:B:171:GLU:HB3	1:B:203:LYS:CE	2.50	0.41
1:B:52:PHE:CD1	1:B:52:PHE:N	2.89	0.41
1:C:63:LEU:O	1:C:64:GLN:HB3	2.20	0.41
1:D:154:LEU:HD22	1:D:194:VAL:HG23	2.02	0.41
1:E:188:LYS:HE2	2:J:71:GLN:CG	2.51	0.41
2:I:27:MET:HA	2:I:39:VAL:O	2.19	0.41
1:A:50:VAL:HG22	1:A:51:VAL:N	2.36	0.41

*Continued on next page...*

*Continued from previous page...*

Atom-1	Atom-2	Interatomic distance (Å)	Clash overlap (Å)
1:A:66:ASN:ND2	3:A:801:NAG:C7	2.84	0.41
1:B:188:LYS:HZ2	1:B:188:LYS:HB3	1.86	0.41
1:B:78:VAL:HG13	1:B:79:PRO:HD2	2.03	0.41
1:C:154:LEU:HD22	1:C:194:VAL:HG23	2.03	0.41
1:D:65:TRP:CZ2	1:D:109:SER:HA	2.55	0.41
1:C:14:TYR:CE1	1:C:83:LEU:HA	2.56	0.41
1:A:56:MET:CE	1:A:86:PRO:HB2	2.51	0.41
1:B:63:LEU:O	1:B:64:GLN:HB3	2.20	0.41
1:B:90:ALA:CB	1:B:93:ALA:HB2	2.51	0.41
1:C:112:HIS:CD2	3:C:802:NAG:H62	2.56	0.41
1:E:123:PHE:N	1:E:123:PHE:CD1	2.89	0.41
1:E:183:PHE:CZ	1:E:190:PRO:HB3	2.56	0.41
1:E:188:LYS:HZ3	2:J:11:ILE:HD11	1.86	0.41
1:A:65:TRP:CE2	1:A:109:SER:HA	2.55	0.41
1:B:3:GLN:HB3	1:B:4:ARG:H	1.45	0.41
1:C:4:ARG:HG3	1:C:7:TYR:CD2	2.55	0.41
1:C:91:TYR:N	1:C:91:TYR:CD2	2.89	0.41
1:D:161:ILE:O	1:D:161:ILE:HD13	2.21	0.41
1:D:3:GLN:CG	1:D:4:ARG:N	2.84	0.41
2:I:52:LYS:CG	2:I:53:PRO:HD2	2.44	0.41
1:A:37:GLN:HG2	1:A:38:ILE:N	2.36	0.41
1:A:92:ASN:HD21	1:A:140:LEU:HA	1.86	0.41
1:B:65:TRP:CZ2	1:B:109:SER:HA	2.56	0.41
1:E:169:ARG:HD2	1:E:202:LYS:HE3	2.02	0.41
1:E:50:VAL:HG22	1:E:51:VAL:N	2.35	0.41
2:F:2:VAL:HG22	2:F:15:THR:HG22	2.03	0.41
2:H:27:MET:HA	2:H:39:VAL:O	2.21	0.41
2:I:5:THR:O	2:I:11:ILE:HG22	2.21	0.41
2:J:28:TRP:CD1	2:J:28:TRP:N	2.89	0.41
1:A:179:ARG:NH1	1:A:179:ARG:HG3	2.34	0.41
1:C:65:TRP:CE2	1:C:109:SER:HA	2.56	0.41
1:C:50:VAL:HG22	1:C:51:VAL:N	2.36	0.41
1:D:144:SER:OG	1:D:147:HIS:HB2	2.21	0.41
2:G:28:TRP:N	2:G:28:TRP:CD1	2.89	0.41
1:A:65:TRP:CZ2	1:A:109:SER:HA	2.56	0.41
1:B:15:ASN:HA	1:B:16:PRO:HD2	1.95	0.41
1:C:149:SER:OG	1:C:190:PRO:HG2	2.21	0.41
1:C:37:GLN:HG2	1:C:38:ILE:N	2.36	0.41
1:D:56:MET:CE	1:D:86:PRO:HB2	2.50	0.41
1:E:42:ASP:HB3	1:E:47:VAL:CG1	2.51	0.41
2:G:27:MET:HA	2:G:39:VAL:O	2.20	0.41

*Continued on next page...*

*Continued from previous page...*

Atom-1	Atom-2	Interatomic distance (Å)	Clash overlap (Å)
2:I:62:THR:HG22	2:I:63:ASP:N	2.35	0.41
1:A:144:SER:OG	1:A:147:HIS:HB2	2.21	0.41
1:D:11:VAL:HG12	1:D:11:VAL:O	2.21	0.41
1:D:188:LYS:HE2	2:H:71:GLN:HG2	2.02	0.41
1:A:44:LYS:CE	1:B:169:ARG:HH12	2.31	0.40
1:D:123:PHE:N	1:D:123:PHE:CD1	2.89	0.40
1:D:184:TYR:O	1:D:186:CYS:N	2.52	0.40
1:D:37:GLN:HG2	1:D:38:ILE:N	2.36	0.40
1:E:32:SER:HB3	1:E:55:GLN:CB	2.43	0.40
1:B:22:GLN:O	1:B:23:ARG:O	2.39	0.40
1:D:6:LEU:HG	1:D:10:LEU:HD11	2.03	0.40
1:E:65:TRP:CE2	1:E:109:SER:HA	2.56	0.40
1:B:184:TYR:CE1	2:G:39:VAL:HG22	2.56	0.40
2:H:28:TRP:N	2:H:28:TRP:CD1	2.89	0.40
2:H:62:THR:HG22	2:H:63:ASP:N	2.36	0.40
1:C:108:ASN:ND2	3:C:802:NAG:C7	2.84	0.40
1:C:6:LEU:HG	1:C:10:LEU:HD11	2.04	0.40
1:E:183:PHE:N	1:E:183:PHE:CD1	2.90	0.40
1:A:186:CYS:O	1:A:187:CYS:O	2.39	0.40
1:B:50:VAL:HG22	1:B:51:VAL:N	2.37	0.40
1:C:11:VAL:HG12	1:C:11:VAL:O	2.22	0.40
1:D:33:LEU:HD22	1:D:196:PHE:CZ	2.57	0.40
1:E:78:VAL:HG13	1:E:79:PRO:HD2	2.04	0.40
2:G:52:LYS:CG	2:G:53:PRO:HD2	2.44	0.40
1:A:100:LEU:HD22	1:E:96:LYS:N	2.37	0.40
1:D:14:TYR:CE1	1:D:83:LEU:HA	2.56	0.40
1:D:50:VAL:HG22	1:D:51:VAL:N	2.36	0.40
1:E:14:TYR:CE1	1:E:83:LEU:HA	2.56	0.40

There are no symmetry-related clashes.

## 5.3 Torsion angles [i](#)

### 5.3.1 Protein backbone [i](#)

In the following table, the Percentiles column shows the percent Ramachandran outliers of the chain as a percentile score with respect to all X-ray entries followed by that with respect to entries of similar resolution.

The Analysed column shows the number of residues for which the backbone conformation was analysed, and the total number of residues.

Mol	Chain	Analysed	Favoured	Allowed	Outliers	Percentiles	
1	A	200/202 (99%)	171 (86%)	23 (12%)	6 (3%)	5	37
1	B	200/202 (99%)	169 (84%)	24 (12%)	7 (4%)	4	33
1	C	200/202 (99%)	172 (86%)	22 (11%)	6 (3%)	5	37
1	D	200/202 (99%)	173 (86%)	22 (11%)	5 (2%)	6	40
1	E	200/202 (99%)	172 (86%)	22 (11%)	6 (3%)	5	37
2	F	71/73 (97%)	61 (86%)	9 (13%)	1 (1%)	12	52
2	G	71/73 (97%)	60 (84%)	10 (14%)	1 (1%)	12	52
2	H	71/73 (97%)	61 (86%)	9 (13%)	1 (1%)	12	52
2	I	71/73 (97%)	60 (84%)	10 (14%)	1 (1%)	12	52
2	J	71/73 (97%)	61 (86%)	9 (13%)	1 (1%)	12	52
All	All	1355/1375 (98%)	1160 (86%)	160 (12%)	35 (3%)	6	39

All (35) Ramachandran outliers are listed below:

Mol	Chain	Res	Type
1	A	167	TYR
1	A	187	CYS
1	B	23	ARG
1	C	158	GLU
1	C	187	CYS
1	A	23	ARG
1	B	186	CYS
1	B	187	CYS
1	C	23	ARG
1	C	185	GLU
1	D	23	ARG
1	D	187	CYS
1	E	186	CYS
1	E	187	CYS
1	A	186	CYS
1	C	186	CYS
1	D	186	CYS
1	A	32	SER
1	A	166	PRO
1	B	32	SER
1	B	185	GLU
1	D	32	SER
1	E	23	ARG
1	E	32	SER

*Continued on next page...*

*Continued from previous page...*

Mol	Chain	Res	Type
2	F	17	PRO
2	G	17	PRO
2	I	17	PRO
2	J	17	PRO
1	C	32	SER
2	H	17	PRO
1	B	167	TYR
1	E	185	GLU
1	D	80	ILE
1	B	80	ILE
1	E	80	ILE

### 5.3.2 Protein sidechains ⓘ

In the following table, the Percentiles column shows the percent sidechain outliers of the chain as a percentile score with respect to all X-ray entries followed by that with respect to entries of similar resolution.

The Analysed column shows the number of residues for which the sidechain conformation was analysed, and the total number of residues.

Mol	Chain	Analysed	Rotameric	Outliers	Percentiles	
1	A	188/188 (100%)	180 (96%)	8 (4%)	32	67
1	B	188/188 (100%)	182 (97%)	6 (3%)	42	74
1	C	188/188 (100%)	179 (95%)	9 (5%)	28	64
1	D	188/188 (100%)	180 (96%)	8 (4%)	32	67
1	E	188/188 (100%)	179 (95%)	9 (5%)	28	64
2	F	66/66 (100%)	65 (98%)	1 (2%)	67	86
2	G	66/66 (100%)	65 (98%)	1 (2%)	67	86
2	H	66/66 (100%)	65 (98%)	1 (2%)	67	86
2	I	66/66 (100%)	65 (98%)	1 (2%)	67	86
2	J	66/66 (100%)	65 (98%)	1 (2%)	67	86
All	All	1270/1270 (100%)	1225 (96%)	45 (4%)	39	72

All (45) residues with a non-rotameric sidechain are listed below:

Mol	Chain	Res	Type
1	A	53	TRP
1	A	62	TYR

*Continued on next page...*

*Continued from previous page...*

Mol	Chain	Res	Type
1	A	122	ARG
1	A	150	ARG
1	A	179	ARG
1	A	186	CYS
1	A	187	CYS
1	A	188	LYS
1	B	53	TRP
1	B	62	TYR
1	B	108	ASN
1	B	122	ARG
1	B	150	ARG
1	B	179	ARG
1	C	23	ARG
1	C	53	TRP
1	C	62	TYR
1	C	122	ARG
1	C	150	ARG
1	C	179	ARG
1	C	186	CYS
1	C	187	CYS
1	C	188	LYS
1	D	23	ARG
1	D	53	TRP
1	D	62	TYR
1	D	122	ARG
1	D	150	ARG
1	D	161	ILE
1	D	179	ARG
1	D	182	ARG
1	E	22	GLN
1	E	23	ARG
1	E	53	TRP
1	E	62	TYR
1	E	114	GLN
1	E	122	ARG
1	E	150	ARG
1	E	179	ARG
1	E	188	LYS
2	F	11	ILE
2	G	11	ILE
2	H	11	ILE
2	I	11	ILE

*Continued on next page...*

*Continued from previous page...*

Mol	Chain	Res	Type
2	J	11	ILE

Some sidechains can be flipped to improve hydrogen bonding and reduce clashes. All (36) such sidechains are listed below:

Mol	Chain	Res	Type
1	A	22	GLN
1	A	37	GLN
1	A	75	GLN
1	A	112	HIS
1	A	121	GLN
1	A	155	GLN
1	A	157	GLN
1	B	22	GLN
1	B	37	GLN
1	B	92	ASN
1	B	112	HIS
1	B	121	GLN
1	B	155	GLN
1	C	37	GLN
1	C	75	GLN
1	C	112	HIS
1	C	121	GLN
1	C	155	GLN
1	D	37	GLN
1	D	75	GLN
1	D	112	HIS
1	D	114	GLN
1	D	121	GLN
1	D	155	GLN
1	D	157	GLN
1	E	3	GLN
1	E	22	GLN
1	E	37	GLN
1	E	112	HIS
1	E	114	GLN
1	E	121	GLN
1	E	155	GLN
1	E	157	GLN
1	E	177	GLN
2	F	71	GLN
2	I	68	HIS

### 5.3.3 RNA ⓘ

There are no RNA molecules in this entry.

## 5.4 Non-standard residues in protein, DNA, RNA chains ⓘ

There are no non-standard protein/DNA/RNA residues in this entry.

## 5.5 Carbohydrates ⓘ

There are no carbohydrates in this entry.

## 5.6 Ligand geometry ⓘ

8 ligands are modelled in this entry.

In the following table, the Counts columns list the number of bonds (or angles) for which Mogul statistics could be retrieved, the number of bonds (or angles) that are observed in the model and the number of bonds (or angles) that are defined in the Chemical Component Dictionary. The Link column lists molecule types, if any, to which the group is linked. The Z score for a bond length (or angle) is the number of standard deviations the observed value is removed from the expected value. A bond length (or angle) with  $|Z| > 2$  is considered an outlier worth inspection. RMSZ is the root-mean-square of all Z scores of the bond lengths (or angles).

Mol	Type	Chain	Res	Link	Bond lengths			Bond angles		
					Counts	RMSZ	# $ Z  > 2$	Counts	RMSZ	# $ Z  > 2$
3	NAG	A	801	1	14,14,15	0.64	0	17,19,21	0.58	0
3	NAG	A	802	1	14,14,15	0.88	1 (7%)	17,19,21	0.82	1 (5%)
3	NAG	B	801	1,3	14,14,15	0.78	0	17,19,21	0.68	0
3	NAG	B	802	3	14,14,15	0.64	0	17,19,21	0.58	0
3	NAG	B	803	1	14,14,15	0.67	0	17,19,21	0.62	0
3	NAG	C	801	1	14,14,15	0.50	0	17,19,21	0.75	0
3	NAG	C	802	1	14,14,15	0.52	0	17,19,21	0.72	0
3	NAG	D	801	1	14,14,15	0.77	0	17,19,21	0.74	0

In the following table, the Chirals column lists the number of chiral outliers, the number of chiral centers analysed, the number of these observed in the model and the number defined in the Chemical Component Dictionary. Similar counts are reported in the Torsion and Rings columns. '-' means no outliers of that kind were identified.

Mol	Type	Chain	Res	Link	Chirals	Torsions	Rings
3	NAG	A	801	1	-	0/6/23/26	0/1/1/1
3	NAG	A	802	1	-	2/6/23/26	0/1/1/1

*Continued on next page...*

*Continued from previous page...*

Mol	Type	Chain	Res	Link	Chirals	Torsions	Rings
3	NAG	B	801	1,3	-	0/6/23/26	0/1/1/1
3	NAG	B	802	3	-	0/6/23/26	0/1/1/1
3	NAG	B	803	1	-	0/6/23/26	0/1/1/1
3	NAG	C	801	1	-	0/6/23/26	0/1/1/1
3	NAG	C	802	1	-	2/6/23/26	0/1/1/1
3	NAG	D	801	1	-	0/6/23/26	0/1/1/1

All (1) bond length outliers are listed below:

Mol	Chain	Res	Type	Atoms	Z	Observed(Å)	Ideal(Å)
3	A	802	NAG	C1-C2	2.48	1.55	1.52

All (1) bond angle outliers are listed below:

Mol	Chain	Res	Type	Atoms	Z	Observed(°)	Ideal(°)
3	A	802	NAG	C1-O5-C5	2.20	115.22	112.19

There are no chirality outliers.

All (4) torsion outliers are listed below:

Mol	Chain	Res	Type	Atoms
3	C	802	NAG	C8-C7-N2-C2
3	A	802	NAG	C8-C7-N2-C2
3	A	802	NAG	O7-C7-N2-C2
3	C	802	NAG	O7-C7-N2-C2

There are no ring outliers.

7 monomers are involved in 13 short contacts:

Mol	Chain	Res	Type	Clashes	Symm-Clashes
3	A	801	NAG	2	0
3	A	802	NAG	3	0
3	B	801	NAG	4	0
3	B	802	NAG	4	0
3	B	803	NAG	1	0
3	C	802	NAG	2	0
3	D	801	NAG	1	0

## 5.7 Other polymers [i](#)

There are no such residues in this entry.

## 5.8 Polymer linkage issues [i](#)

There are no chain breaks in this entry.

## 6 Fit of model and data

### 6.1 Protein, DNA and RNA chains

In the following table, the column labelled ‘#RSRZ > 2’ contains the number (and percentage) of RSRZ outliers, followed by percent RSRZ outliers for the chain as percentile scores relative to all X-ray entries and entries of similar resolution. The OWAB column contains the minimum, median, 95<sup>th</sup> percentile and maximum values of the occupancy-weighted average B-factor per residue. The column labelled ‘Q < 0.9’ lists the number of (and percentage) of residues with an average occupancy less than 0.9.

Mol	Chain	Analysed	<RSRZ>	#RSRZ>2	OWAB(Å <sup>2</sup> )	Q<0.9
1	A	202/202 (100%)	0.28	5 (2%) 57 50	132, 155, 171, 178	0
1	B	202/202 (100%)	0.26	3 (1%) 73 68	132, 156, 170, 179	0
1	C	202/202 (100%)	0.26	2 (0%) 82 77	132, 156, 170, 179	0
1	D	202/202 (100%)	0.28	0 100 100	132, 156, 169, 179	0
1	E	202/202 (100%)	0.27	5 (2%) 57 50	132, 155, 170, 179	0
2	F	73/73 (100%)	0.22	1 (1%) 75 69	165, 170, 191, 192	0
2	G	73/73 (100%)	0.48	3 (4%) 37 32	165, 170, 190, 191	0
2	H	73/73 (100%)	0.53	4 (5%) 25 22	165, 170, 190, 191	0
2	I	73/73 (100%)	0.18	1 (1%) 75 69	165, 170, 190, 191	0
2	J	73/73 (100%)	1.07	17 (23%) 0 0	165, 170, 190, 191	0
All	All	1375/1375 (100%)	0.33	41 (2%) 50 44	132, 161, 181, 192	0

All (41) RSRZ outliers are listed below:

Mol	Chain	Res	Type	RSRZ
2	J	73	PRO	5.5
2	J	40	VAL	4.0
1	A	76	VAL	3.6
2	J	72	ARG	3.5
2	J	2	VAL	3.2
2	J	47	THR	3.1
1	A	73	VAL	3.1
2	J	61	SER	3.0
2	H	56	GLU	3.0
2	J	1	ILE	2.8
2	J	21	ASN	2.8
2	G	13	ALA	2.8
2	I	54	TYR	2.8

*Continued on next page...*

*Continued from previous page...*

Mol	Chain	Res	Type	RSRZ
1	C	196	PHE	2.8
2	J	18	PRO	2.7
1	B	188	LYS	2.5
1	E	150	ARG	2.5
1	E	73	VAL	2.5
1	A	188	LYS	2.4
1	B	154	LEU	2.4
1	A	74	LYS	2.4
2	G	26	LYS	2.4
1	A	172	LEU	2.3
1	E	159	ALA	2.3
2	H	73	PRO	2.2
2	J	27	MET	2.2
2	J	56	GLU	2.2
1	E	196	PHE	2.2
1	B	172	LEU	2.2
2	H	47	THR	2.1
2	J	54	TYR	2.1
1	E	170	PHE	2.1
2	H	46	ALA	2.1
2	G	64	LYS	2.1
2	J	26	LYS	2.1
2	F	57	VAL	2.1
2	J	15	THR	2.0
2	J	57	VAL	2.0
2	J	67	PRO	2.0
1	C	71	PRO	2.0
2	J	69	PRO	2.0

## 6.2 Non-standard residues in protein, DNA, RNA chains [i](#)

There are no non-standard protein/DNA/RNA residues in this entry.

## 6.3 Carbohydrates [i](#)

There are no carbohydrates in this entry.

## 6.4 Ligands [i](#)

In the following table, the Atoms column lists the number of modelled atoms in the group and the number defined in the chemical component dictionary. The B-factors column lists the minimum,

median, 95<sup>th</sup> percentile and maximum values of B factors of atoms in the group. The column labelled 'Q< 0.9' lists the number of atoms with occupancy less than 0.9.

Mol	Type	Chain	Res	Atoms	RSCC	RSR	B-factors(Å <sup>2</sup> )	Q<0.9
3	NAG	B	802	14/15	0.45	0.97	190,191,192,192	0
3	NAG	A	801	14/15	0.66	0.42	178,178,179,179	0
3	NAG	B	801	14/15	0.75	0.28	184,186,187,188	0
3	NAG	A	802	14/15	0.80	0.43	143,143,143,143	0
3	NAG	D	801	14/15	0.82	0.44	180,180,181,181	0
3	NAG	C	802	14/15	0.87	0.22	145,146,146,146	0
3	NAG	B	803	14/15	0.89	0.24	143,143,143,143	0
3	NAG	C	801	14/15	0.90	0.33	180,181,181,181	0

## 6.5 Other polymers ⓘ

There are no such residues in this entry.