



wwPDB X-ray Structure Validation Summary Report ⓘ

Mar 10, 2018 – 04:23 pm GMT

PDB ID : 1HWP
Title : EBULIN COMPLEXED WITH PTEROIC ACID, TRIGONAL CRYSTAL FORM
Authors : Pascal, J.M.; Day, P.J.; Monzingo, A.F.; Ernst, S.R.; Robertus, J.D.
Deposited on : 2001-01-09
Resolution : 3.10 Å(reported)

This is a wwPDB X-ray Structure Validation Summary Report for a publicly released PDB entry.

We welcome your comments at validation@mail.wwpdb.org

A user guide is available at

<https://www.wwpdb.org/validation/2017/XrayValidationReportHelp>

with specific help available everywhere you see the ⓘ symbol.

The following versions of software and data (see [references ⓘ](#)) were used in the production of this report:

MolProbity : 4.02b-467
Mogul : 1.7.3 (157068), CSD as539be (2018)
Xtriage (Phenix) : 1.13
EDS : trunk30967
Percentile statistics : 20171227.v01 (using entries in the PDB archive December 27th 2017)
Refmac : 5.8.0158
CCP4 : 7.0 (Gargrove)
Ideal geometry (proteins) : Engh & Huber (2001)
Ideal geometry (DNA, RNA) : Parkinson et al. (1996)
Validation Pipeline (wwPDB-VP) : trunk30967

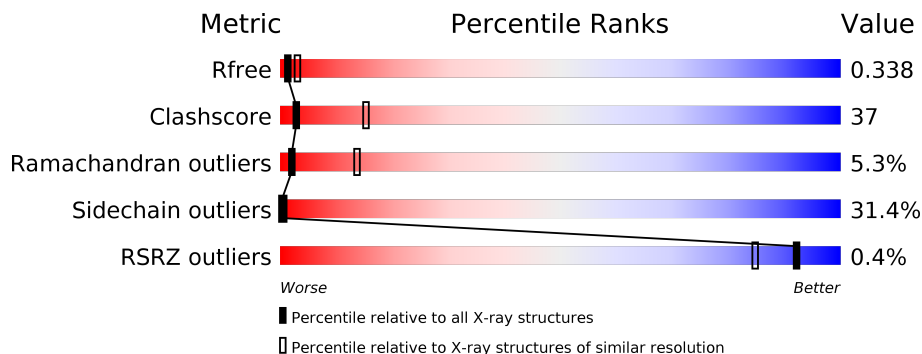
1 Overall quality at a glance

The following experimental techniques were used to determine the structure:

X-RAY DIFFRACTION

The reported resolution of this entry is 3.10 Å.

Percentile scores (ranging between 0-100) for global validation metrics of the entry are shown in the following graphic. The table shows the number of entries on which the scores are based.



Metric	Whole archive (#Entries)	Similar resolution (#Entries, resolution range(Å))
R_{free}	111664	1115 (3.12-3.08)
Clashscore	122126	1042 (3.10-3.10)
Ramachandran outliers	120053	1010 (3.10-3.10)
Sidechain outliers	120020	1010 (3.10-3.10)
RSRZ outliers	108989	1089 (3.12-3.08)

The table below summarises the geometric issues observed across the polymeric chains and their fit to the electron density. The red, orange, yellow and green segments on the lower bar indicate the fraction of residues that contain outliers for ≥ 3 , 2, 1 and 0 types of geometric quality criteria. A grey segment represents the fraction of residues that are not modelled. The numeric value for each fraction is indicated below the corresponding segment, with a dot representing fractions $\leq 5\%$. The upper red bar (where present) indicates the fraction of residues that have poor fit to the electron density. The numeric value is given above the bar.

Mol	Chain	Length	Quality of chain
1	A	254	
2	B	266	

The following table lists non-polymeric compounds, carbohydrate monomers and non-standard residues in protein, DNA, RNA chains that are outliers for geometric or electron-density-fit criteria:

Mol	Type	Chain	Res	Chirality	Geometry	Clashes	Electron density
4	GAL	B	280	-	-	-	X
5	BGC	B	281	-	-	-	X

2 Entry composition [i](#)

There are 8 unique types of molecules in this entry. The entry contains 4123 atoms, of which 0 are hydrogens and 0 are deuteriums.

In the tables below, the ZeroOcc column contains the number of atoms modelled with zero occupancy, the AltConf column contains the number of residues with at least one atom in alternate conformation and the Trace column contains the number of residues modelled with at most 2 atoms.

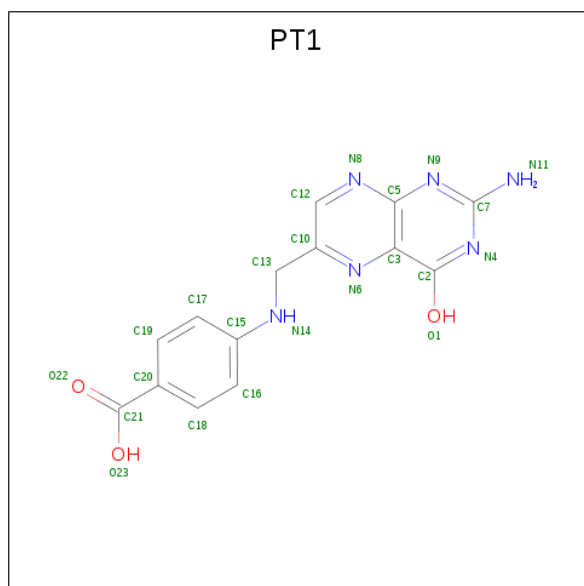
- Molecule 1 is a protein called EBULIN.

Mol	Chain	Residues	Atoms					ZeroOcc	AltConf	Trace
1	A	252	Total	C	N	O	S	0	0	0
			1990	1257	341	387	5			

- Molecule 2 is a protein called EBULIN.

Mol	Chain	Residues	Atoms					ZeroOcc	AltConf	Trace
2	B	263	Total	C	N	O	S	0	0	0
			2028	1253	359	400	16			

- Molecule 3 is PTEROIC ACID (three-letter code: PT1) (formula: $C_{14}H_{12}N_6O_3$).



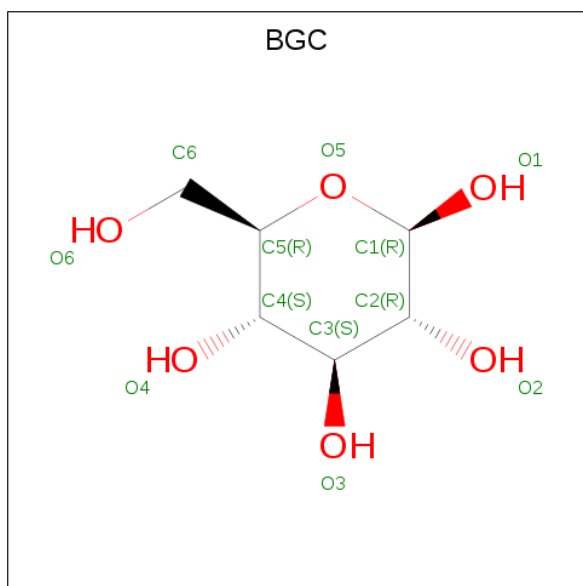
Mol	Chain	Residues	Atoms				ZeroOcc	AltConf
3	A	1	Total	C	N	O	0	0
			23	14	6	3		

- Molecule 4 is BETA-D-GALACTOSE (three-letter code: GAL) (formula: $C_6H_{12}O_6$).



Mol	Chain	Residues	Atoms			ZeroOcc	AltConf
4	B	1	Total	C	O	0	0
			11	6	5		

- Molecule 5 is BETA-D-GLUCOSE (three-letter code: BGC) (formula: $C_6H_{12}O_6$).



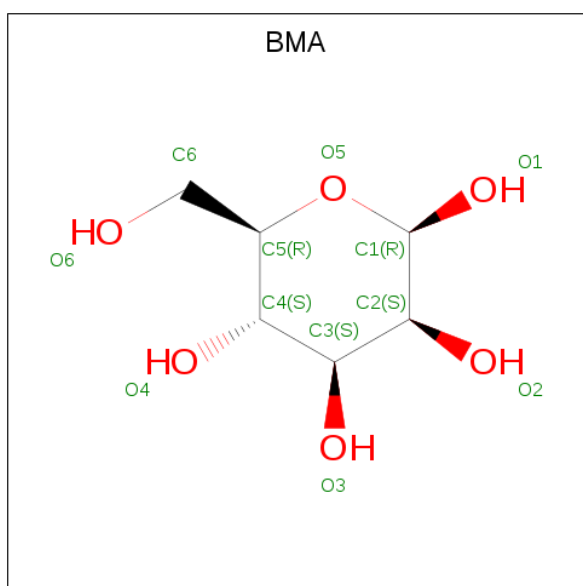
Mol	Chain	Residues	Atoms			ZeroOcc	AltConf
5	B	1	Total	C	O	0	0
			12	6	6		

- Molecule 6 is N-ACETYL-D-GLUCOSAMINE (three-letter code: NAG) (formula: $C_8H_{15}NO_6$).



Mol	Chain	Residues	Atoms				ZeroOcc	AltConf
6	B	1	Total	C	N	O	0	0
			14	8	1	5		
6	B	1	Total	C	N	O	0	0
			14	8	1	5		

- Molecule 7 is BETA-D-MANNOSE (three-letter code: BMA) (formula: $C_6H_{12}O_6$).



Mol	Chain	Residues	Atoms			ZeroOcc	AltConf
7	B	1	Total	C	O	0	0
			11	6	5		

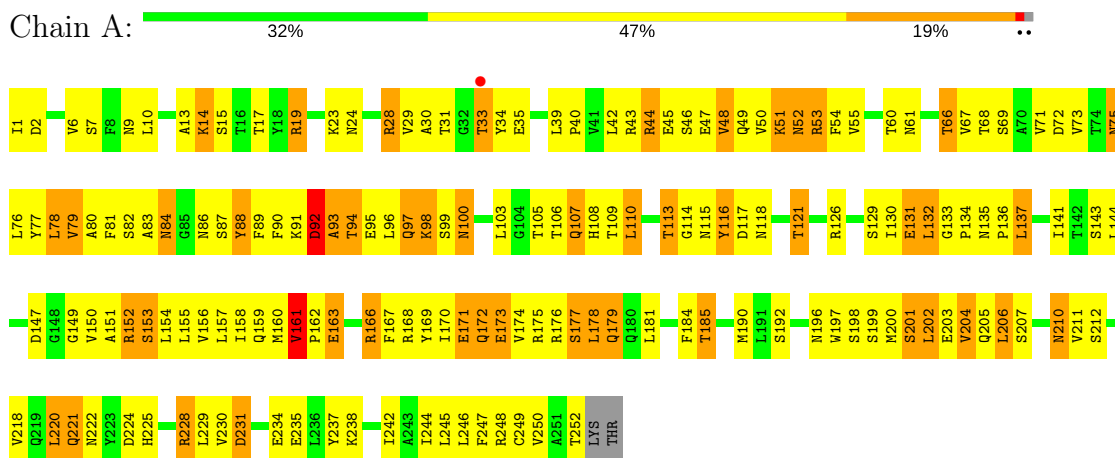
- Molecule 8 is water.

Mol	Chain	Residues	Atoms		ZeroOcc	AltConf
8	A	8	Total 8	O 8	0	0
8	B	12	Total 12	O 12	0	0

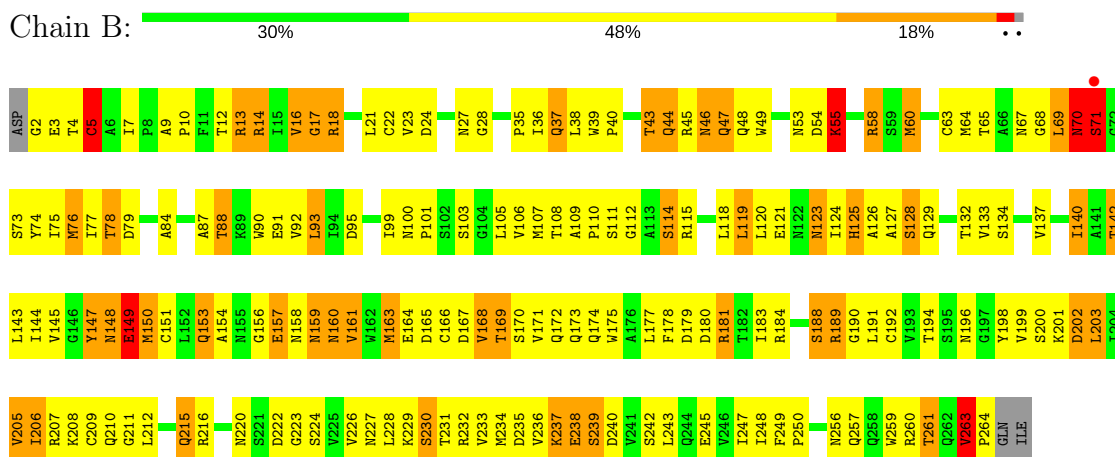
3 Residue-property plots

These plots are drawn for all protein, RNA and DNA chains in the entry. The first graphic for a chain summarises the proportions of the various outlier classes displayed in the second graphic. The second graphic shows the sequence view annotated by issues in geometry and electron density. Residues are color-coded according to the number of geometric quality criteria for which they contain at least one outlier: green = 0, yellow = 1, orange = 2 and red = 3 or more. A red dot above a residue indicates a poor fit to the electron density ($RSRZ > 2$). Stretches of 2 or more consecutive residues without any outlier are shown as a green connector. Residues present in the sample, but not in the model, are shown in grey.

• Molecule 1: EBULIN



• Molecule 2: EBULIN



4 Data and refinement statistics

Property	Value	Source
Space group	P 32 2 1	Depositor
Cell constants a, b, c, α , β , γ	74.23Å 74.23Å 190.98Å 90.00° 90.00° 120.00°	Depositor
Resolution (Å)	40.00 – 3.10 29.30 – 3.05	Depositor EDS
% Data completeness (in resolution range)	(Not available) (40.00-3.10) 92.4 (29.30-3.05)	Depositor EDS
R_{merge}	0.12	Depositor
R_{sym}	(Not available)	Depositor
$\langle I/\sigma(I) \rangle$ ¹	2.43 (at 3.05Å)	Xtriage
Refinement program	X-PLOR 3.851	Depositor
R, R_{free}	0.219 , 0.317 0.233 , 0.338	Depositor DCC
R_{free} test set	596 reflections (4.98%)	wwPDB-VP
Wilson B-factor (Å ²)	35.3	Xtriage
Anisotropy	0.503	Xtriage
Bulk solvent k_{sol} (e/Å ³), B_{sol} (Å ²)	0.32 , 62.1	EDS
L-test for twinning ²	$\langle L \rangle = 0.47$, $\langle L^2 \rangle = 0.29$	Xtriage
Estimated twinning fraction	0.047 for -h,-k,l	Xtriage
F_o, F_c correlation	0.86	EDS
Total number of atoms	4123	wwPDB-VP
Average B, all atoms (Å ²)	27.0	wwPDB-VP

Xtriage's analysis on translational NCS is as follows: *The largest off-origin peak in the Patterson function is 4.93% of the height of the origin peak. No significant pseudotranslation is detected.*

¹Intensities estimated from amplitudes.

²Theoretical values of $\langle |L| \rangle$, $\langle L^2 \rangle$ for acentric reflections are 0.5, 0.333 respectively for untwinned datasets, and 0.375, 0.2 for perfectly twinned datasets.

5 Model quality

5.1 Standard geometry

Bond lengths and bond angles in the following residue types are not validated in this section: PT1, GAL, BGC, NAG, BMA

The Z score for a bond length (or angle) is the number of standard deviations the observed value is removed from the expected value. A bond length (or angle) with $|Z| > 5$ is considered an outlier worth inspection. RMSZ is the root-mean-square of all Z scores of the bond lengths (or angles).

Mol	Chain	Bond lengths		Bond angles	
		RMSZ	$\# Z > 5$	RMSZ	$\# Z > 5$
1	A	0.26	0/2027	0.47	0/2756
2	B	0.24	0/2065	0.50	0/2813
All	All	0.25	0/4092	0.48	0/5569

There are no bond length outliers.

There are no bond angle outliers.

There are no chirality outliers.

There are no planarity outliers.

5.2 Too-close contacts

In the following table, the Non-H and H(model) columns list the number of non-hydrogen atoms and hydrogen atoms in the chain respectively. The H(added) column lists the number of hydrogen atoms added and optimized by MolProbity. The Clashes column lists the number of clashes within the asymmetric unit, whereas Symm-Clashes lists symmetry related clashes.

Mol	Chain	Non-H	H(model)	H(added)	Clashes	Symm-Clashes
1	A	1990	0	1962	149	0
2	B	2028	0	1959	167	0
3	A	23	0	10	1	0
4	B	11	0	10	1	0
5	B	12	0	11	2	0
6	B	28	0	24	0	0
7	B	11	0	10	0	0
8	A	8	0	0	1	0
8	B	12	0	0	0	0
All	All	4123	0	3986	300	0

The all-atom clashscore is defined as the number of clashes found per 1000 atoms (including

hydrogen atoms). The all-atom clashscore for this structure is 37.

The worst 5 of 300 close contacts within the same asymmetric unit are listed below, sorted by their clash magnitude.

Atom-1	Atom-2	Interatomic distance (Å)	Clash overlap (Å)
2:B:127:ALA:HB3	2:B:211:GLY:HA2	1.31	1.13
2:B:13:ARG:HH11	2:B:13:ARG:HG3	1.20	1.03
2:B:263:VAL:HB	2:B:264:PRO:HD2	1.46	0.97
2:B:150:MET:HB3	2:B:163:MET:HG3	1.46	0.97
2:B:226:VAL:HG22	2:B:233:VAL:HG22	1.49	0.94

There are no symmetry-related clashes.

5.3 Torsion angles [i](#)

5.3.1 Protein backbone [i](#)

In the following table, the Percentiles column shows the percent Ramachandran outliers of the chain as a percentile score with respect to all X-ray entries followed by that with respect to entries of similar resolution.

The Analysed column shows the number of residues for which the backbone conformation was analysed, and the total number of residues.

Mol	Chain	Analysed	Favoured	Allowed	Outliers	Percentiles	
1	A	250/254 (98%)	208 (83%)	31 (12%)	11 (4%)	3	17
2	B	261/266 (98%)	209 (80%)	36 (14%)	16 (6%)	1	10
All	All	511/520 (98%)	417 (82%)	67 (13%)	27 (5%)	2	14

5 of 27 Ramachandran outliers are listed below:

Mol	Chain	Res	Type
1	A	110	LEU
2	B	5	CYS
2	B	55	LYS
2	B	70	ASN
2	B	101	PRO

5.3.2 Protein sidechains [i](#)

In the following table, the Percentiles column shows the percent sidechain outliers of the chain as a percentile score with respect to all X-ray entries followed by that with respect to entries of similar resolution.

The Analysed column shows the number of residues for which the sidechain conformation was analysed, and the total number of residues.

Mol	Chain	Analysed	Rotameric	Outliers	Percentiles	
1	A	221/223 (99%)	146 (66%)	75 (34%)	0	0
2	B	228/231 (99%)	162 (71%)	66 (29%)	0	1
All	All	449/454 (99%)	308 (69%)	141 (31%)	0	0

5 of 141 residues with a non-rotameric sidechain are listed below:

Mol	Chain	Res	Type
1	A	206	LEU
2	B	14	ARG
2	B	208	LYS
1	A	212	SER
1	A	231	ASP

Some sidechains can be flipped to improve hydrogen bonding and reduce clashes. 5 of 26 such sidechains are listed below:

Mol	Chain	Res	Type
2	B	44	GLN
2	B	48	GLN
2	B	173	GLN
2	B	46	ASN
2	B	47	GLN

5.3.3 RNA [i](#)

There are no RNA molecules in this entry.

5.4 Non-standard residues in protein, DNA, RNA chains [i](#)

There are no non-standard protein/DNA/RNA residues in this entry.

5.5 Carbohydrates [i](#)

There are no carbohydrates in this entry.

5.6 Ligand geometry [i](#)

6 ligands are modelled in this entry.

In the following table, the Counts columns list the number of bonds (or angles) for which Mogul statistics could be retrieved, the number of bonds (or angles) that are observed in the model and the number of bonds (or angles) that are defined in the Chemical Component Dictionary. The Link column lists molecule types, if any, to which the group is linked. The Z score for a bond length (or angle) is the number of standard deviations the observed value is removed from the expected value. A bond length (or angle) with $|Z| > 2$ is considered an outlier worth inspection. RMSZ is the root-mean-square of all Z scores of the bond lengths (or angles).

Mol	Type	Chain	Res	Link	Bond lengths			Bond angles		
					Counts	RMSZ	$\# Z > 2$	Counts	RMSZ	$\# Z > 2$
3	PT1	A	321	-	21,25,25	2.31	9 (42%)	27,35,35	1.55	6 (22%)
6	NAG	B	267	2,6	14,14,15	0.53	0	17,19,21	0.75	0
6	NAG	B	268	7,6	14,14,15	0.67	0	17,19,21	0.78	0
7	BMA	B	269	6	11,11,12	0.44	0	15,15,17	0.37	0
4	GAL	B	280	5	11,11,12	0.84	0	15,15,17	2.01	4 (26%)
5	BGC	B	281	4	12,12,12	0.58	0	17,17,17	0.57	0

In the following table, the Chirals column lists the number of chiral outliers, the number of chiral centers analysed, the number of these observed in the model and the number defined in the Chemical Component Dictionary. Similar counts are reported in the Torsion and Rings columns. '-' means no outliers of that kind were identified.

Mol	Type	Chain	Res	Link	Chirals	Torsions	Rings
3	PT1	A	321	-	-	0/5/9/9	0/3/3/3
6	NAG	B	267	2,6	-	0/6/23/26	0/1/1/1
6	NAG	B	268	7,6	-	0/6/23/26	0/1/1/1
7	BMA	B	269	6	-	0/2/19/22	0/1/1/1
4	GAL	B	280	5	-	0/2/19/22	0/1/1/1
5	BGC	B	281	4	-	0/2/22/22	0/1/1/1

The worst 5 of 9 bond length outliers are listed below:

Mol	Chain	Res	Type	Atoms	Z	Observed(Å)	Ideal(Å)
3	A	321	PT1	C17-C15	2.16	1.42	1.39
3	A	321	PT1	C12-C10	2.17	1.43	1.39
3	A	321	PT1	C19-C20	2.32	1.44	1.39

Continued on next page...

Continued from previous page...

Mol	Chain	Res	Type	Atoms	Z	Observed(Å)	Ideal(Å)
3	A	321	PT1	C19-C17	3.02	1.44	1.38
3	A	321	PT1	C18-C20	3.11	1.46	1.39

The worst 5 of 10 bond angle outliers are listed below:

Mol	Chain	Res	Type	Atoms	Z	Observed(°)	Ideal(°)
3	A	321	PT1	C10-C12-N8	-2.76	120.42	123.13
3	A	321	PT1	C17-C15-N14	-2.56	115.74	120.97
3	A	321	PT1	C13-C10-C12	-2.09	117.91	121.55
4	B	280	GAL	C3-C4-C5	-2.04	106.60	110.24
3	A	321	PT1	C12-C10-N6	-2.03	119.52	120.85

There are no chirality outliers.

There are no torsion outliers.

There are no ring outliers.

3 monomers are involved in 4 short contacts:

Mol	Chain	Res	Type	Clashes	Symm-Clashes
3	A	321	PT1	1	0
4	B	280	GAL	1	0
5	B	281	BGC	2	0

5.7 Other polymers [i](#)

There are no such residues in this entry.

5.8 Polymer linkage issues [i](#)

There are no chain breaks in this entry.

6 Fit of model and data [i](#)

6.1 Protein, DNA and RNA chains [i](#)

In the following table, the column labelled ‘#RSRZ> 2’ contains the number (and percentage) of RSRZ outliers, followed by percent RSRZ outliers for the chain as percentile scores relative to all X-ray entries and entries of similar resolution. The OWAB column contains the minimum, median, 95th percentile and maximum values of the occupancy-weighted average B-factor per residue. The column labelled ‘Q< 0.9’ lists the number of (and percentage) of residues with an average occupancy less than 0.9.

Mol	Chain	Analysed	<RSRZ>	#RSRZ>2	OWAB(Å ²)	Q<0.9
1	A	252/254 (99%)	-0.30	1 (0%) 92 85	5, 23, 42, 77	0
2	B	263/266 (98%)	-0.17	1 (0%) 92 85	3, 28, 47, 64	0
All	All	515/520 (99%)	-0.24	2 (0%) 92 85	3, 26, 46, 77	0

All (2) RSRZ outliers are listed below:

Mol	Chain	Res	Type	RSRZ
1	A	33	THR	2.9
2	B	71	SER	2.2

6.2 Non-standard residues in protein, DNA, RNA chains [i](#)

There are no non-standard protein/DNA/RNA residues in this entry.

6.3 Carbohydrates [i](#)

There are no carbohydrates in this entry.

6.4 Ligands [i](#)

In the following table, the Atoms column lists the number of modelled atoms in the group and the number defined in the chemical component dictionary. The B-factors column lists the minimum, median, 95th percentile and maximum values of B factors of atoms in the group. The column labelled ‘Q< 0.9’ lists the number of atoms with occupancy less than 0.9.

Mol	Type	Chain	Res	Atoms	RSCC	RSR	B-factors(Å ²)	Q<0.9
5	BGC	B	281	12/12	0.48	0.83	98,98,98,98	0
7	BMA	B	269	11/12	0.76	0.31	71,71,71,71	0

Continued on next page...

Continued from previous page...

Mol	Type	Chain	Res	Atoms	RSCC	RSR	B-factors(\AA^2)	Q<0.9
4	GAL	B	280	11/12	0.77	0.49	72,72,72,72	0
6	NAG	B	268	14/15	0.82	0.38	64,64,64,64	0
3	PT1	A	321	23/23	0.83	0.28	23,23,23,23	0
6	NAG	B	267	14/15	0.87	0.26	27,27,27,27	0

6.5 Other polymers [i](#)

There are no such residues in this entry.