



Full wwPDB X-ray Structure Validation Report ⓘ

May 16, 2019 – 09:38 PM EDT

PDB ID : 6HWL
Title : Glucosamine kinase in complex with glucosamine, ADP and inorganic phosphate
Authors : Manso, J.A.; Pereira, P.J.B.
Deposited on : 2018-10-12
Resolution : 2.15 Å(reported)

This is a Full wwPDB X-ray Structure Validation Report for a publicly released PDB entry.

We welcome your comments at validation@mail.wwpdb.org

A user guide is available at

<https://www.wwpdb.org/validation/2017/XrayValidationReportHelp>

with specific help available everywhere you see the ⓘ symbol.

The following versions of software and data (see [references ⓘ](#)) were used in the production of this report:

MolProbity : 4.02b-467
Mogul : 1.8.0 (224370), CSD as540be (2019)
Xtriage (Phenix) : 1.13
EDS : rb-20031633
Percentile statistics : 20171227.v01 (using entries in the PDB archive December 27th 2017)
Refmac : 5.8.0158
CCP4 : 7.0 (Gargrove)
Ideal geometry (proteins) : Engh & Huber (2001)
Ideal geometry (DNA, RNA) : Parkinson et al. (1996)
Validation Pipeline (wwPDB-VP) : rb-20031633

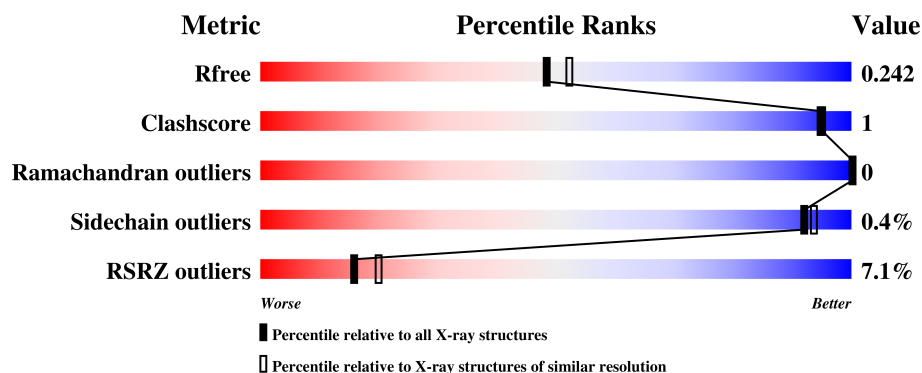
1 Overall quality at a glance

The following experimental techniques were used to determine the structure:

X-RAY DIFFRACTION

The reported resolution of this entry is 2.15 Å.

Percentile scores (ranging between 0-100) for global validation metrics of the entry are shown in the following graphic. The table shows the number of entries on which the scores are based.



Metric	Whole archive (#Entries)	Similar resolution (#Entries, resolution range(Å))
R_{free}	111664	2128 (2.16-2.12)
Clashscore	122126	2253 (2.16-2.12)
Ramachandran outliers	120053	2223 (2.16-2.12)
Sidechain outliers	120020	2222 (2.16-2.12)
RSRZ outliers	108989	2086 (2.16-2.12)

The table below summarises the geometric issues observed across the polymeric chains and their fit to the electron density. The red, orange, yellow and green segments on the lower bar indicate the fraction of residues that contain outliers for ≥ 3 , 2, 1 and 0 types of geometric quality criteria. A grey segment represents the fraction of residues that are not modelled. The numeric value for each fraction is indicated below the corresponding segment, with a dot representing fractions $\leq 5\%$. The upper red bar (where present) indicates the fraction of residues that have poor fit to the electron density. The numeric value is given above the bar.

Mol	Chain	Length	Quality of chain
1	A	451	
1	B	451	

2 Entry composition

There are 9 unique types of molecules in this entry. The entry contains 6322 atoms, of which 0 are hydrogens and 0 are deuteriums.

In the tables below, the ZeroOcc column contains the number of atoms modelled with zero occupancy, the AltConf column contains the number of residues with at least one atom in alternate conformation and the Trace column contains the number of residues modelled with at most 2 atoms.

- Molecule 1 is a protein called Glucosamine kinase.

Mol	Chain	Residues	Atoms					ZeroOcc	AltConf	Trace
1	A	420	Total	C	N	O	S	0	2	0
			3113	1976	552	579	6			
1	B	397	Total	C	N	O	S	0	2	0
			2883	1835	509	533	6			

There are 26 discrepancies between the modelled and reference sequences:

Chain	Residue	Modelled	Actual	Comment	Reference
A	439	LYS	-	expression tag	UNP A0A1H7TQR5
A	440	LEU	-	expression tag	UNP A0A1H7TQR5
A	441	ALA	-	expression tag	UNP A0A1H7TQR5
A	442	ALA	-	expression tag	UNP A0A1H7TQR5
A	443	ALA	-	expression tag	UNP A0A1H7TQR5
A	444	LEU	-	expression tag	UNP A0A1H7TQR5
A	445	GLU	-	expression tag	UNP A0A1H7TQR5
A	446	HIS	-	expression tag	UNP A0A1H7TQR5
A	447	HIS	-	expression tag	UNP A0A1H7TQR5
A	448	HIS	-	expression tag	UNP A0A1H7TQR5
A	449	HIS	-	expression tag	UNP A0A1H7TQR5
A	450	HIS	-	expression tag	UNP A0A1H7TQR5
A	451	HIS	-	expression tag	UNP A0A1H7TQR5
B	439	LYS	-	expression tag	UNP A0A1H7TQR5
B	440	LEU	-	expression tag	UNP A0A1H7TQR5
B	441	ALA	-	expression tag	UNP A0A1H7TQR5
B	442	ALA	-	expression tag	UNP A0A1H7TQR5
B	443	ALA	-	expression tag	UNP A0A1H7TQR5
B	444	LEU	-	expression tag	UNP A0A1H7TQR5
B	445	GLU	-	expression tag	UNP A0A1H7TQR5
B	446	HIS	-	expression tag	UNP A0A1H7TQR5
B	447	HIS	-	expression tag	UNP A0A1H7TQR5
B	448	HIS	-	expression tag	UNP A0A1H7TQR5
B	449	HIS	-	expression tag	UNP A0A1H7TQR5
B	450	HIS	-	expression tag	UNP A0A1H7TQR5

Continued on next page...

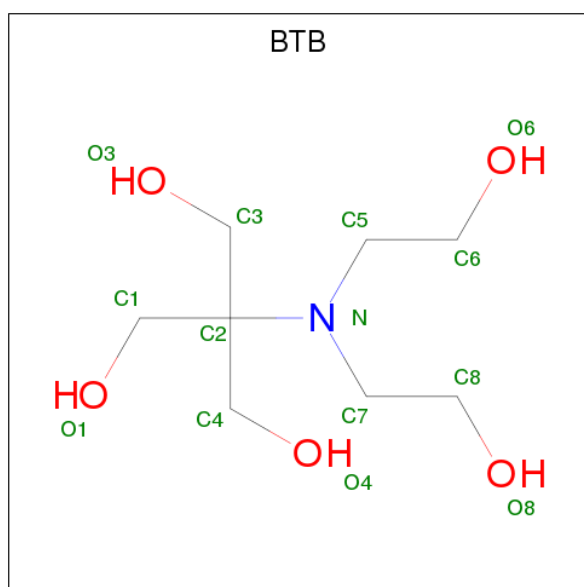
Continued from previous page...

Chain	Residue	Modelled	Actual	Comment	Reference
B	451	HIS	-	expression tag	UNP A0A1H7TQR5

- Molecule 2 is CHLORIDE ION (three-letter code: CL) (formula: Cl).

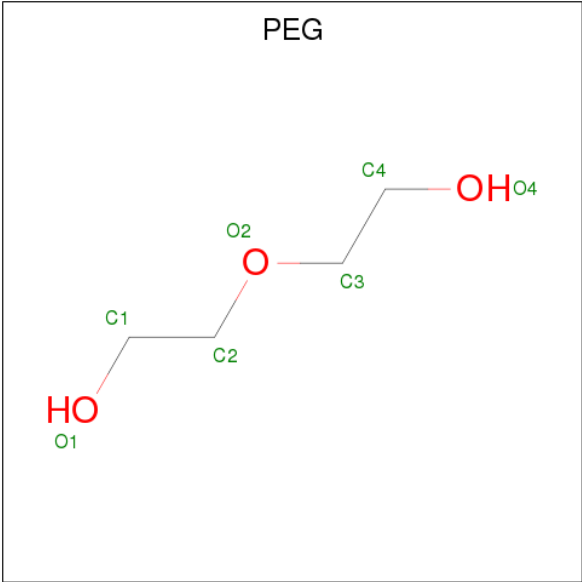
Mol	Chain	Residues	Atoms		ZeroOcc	AltConf
2	B	1	Total	Cl	0	0
			1	1		
2	A	1	Total	Cl	0	0
			1	1		

- Molecule 3 is 2-[BIS-(2-HYDROXY-ETHYL)-AMINO]-2-HYDROXYMETHYL-PROPAN E-1,3-DIOL (three-letter code: BTB) (formula: C₈H₁₉NO₅).



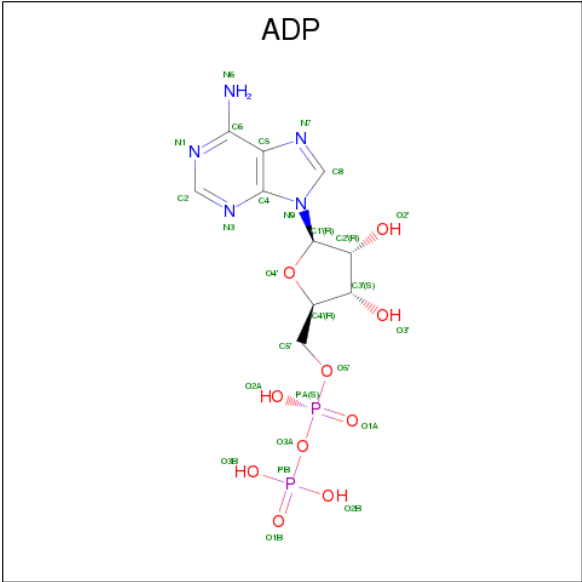
Mol	Chain	Residues	Atoms				ZeroOcc	AltConf
3	A	1	Total	C	N	O	0	0
			14	8	1	5		

- Molecule 4 is DI(HYDROXYETHYL)ETHER (three-letter code: PEG) (formula: C₄H₁₀O₃).



Mol	Chain	Residues	Atoms			ZeroOcc	AltConf
4	A	1	Total	C	O	0	0
			7	4	3		
4	A	1	Total	C	O	0	0
			7	4	3		
4	A	1	Total	C	O	0	0
			7	4	3		

- Molecule 5 is ADENOSINE-5'-DIPHOSPHATE (three-letter code: ADP) (formula: $C_{10}H_{15}N_5O_{10}P_2$).

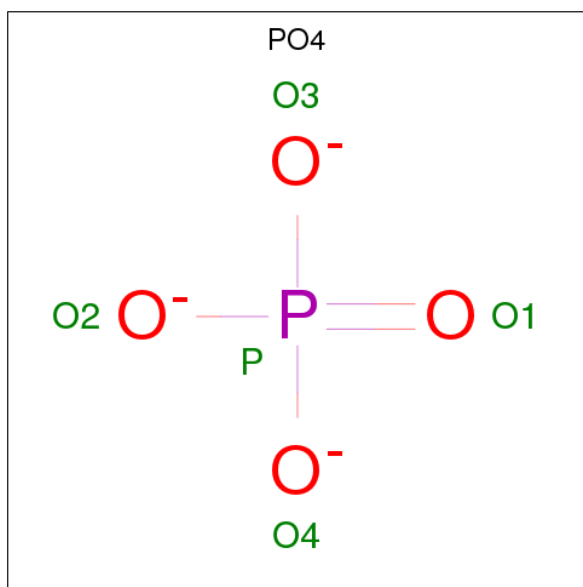


Mol	Chain	Residues	Atoms					ZeroOcc	AltConf
5	B	1	Total	C	N	O	P	0	0
			27	10	5	10	2		

- Molecule 6 is MAGNESIUM ION (three-letter code: MG) (formula: Mg).

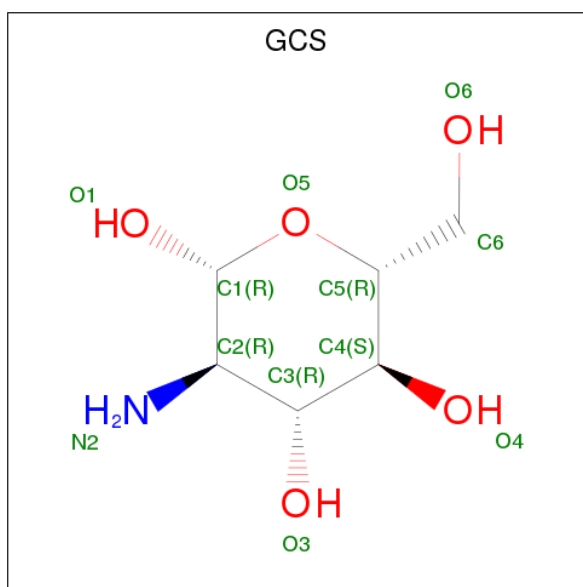
Mol	Chain	Residues	Atoms		ZeroOcc	AltConf
6	B	2	Total	Mg	0	0
			2	2		

- Molecule 7 is PHOSPHATE ION (three-letter code: PO4) (formula: O₄P).



Mol	Chain	Residues	Atoms			ZeroOcc	AltConf
7	B	1	Total	O	P	0	0
			5	4	1		

- Molecule 8 is D-GLUCOSAMINE (three-letter code: GCS) (formula: C₆H₁₃NO₅).

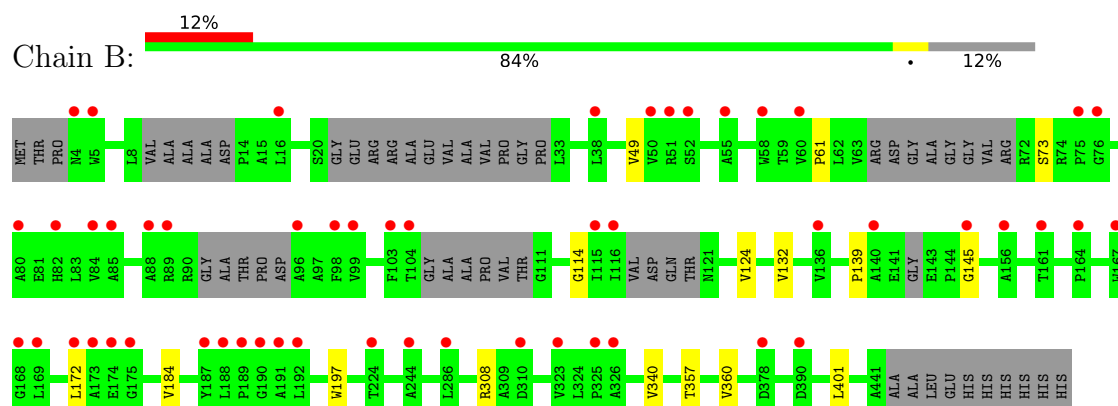


Mol	Chain	Residues	Atoms				ZeroOcc	AltConf
8	B	1	Total	C	N	O	0	0
			12	6	1	5		

- Molecule 9 is water.

Mol	Chain	Residues	Atoms		ZeroOcc	AltConf
9	A	153	Total	O	0	0
			153	153		
9	B	90	Total	O	0	0
			90	90		

- Molecule 1: Glucosamine kinase



4 Data and refinement statistics

Property	Value	Source
Space group	P 1 21 1	Depositor
Cell constants a, b, c, α , β , γ	58.76Å 97.44Å 80.19Å 90.00° 107.42° 90.00°	Depositor
Resolution (Å)	39.89 – 2.15 60.18 – 2.15	Depositor EDS
% Data completeness (in resolution range)	98.3 (39.89-2.15) 98.3 (60.18-2.15)	Depositor EDS
R_{merge}	0.11	Depositor
R_{sym}	(Not available)	Depositor
$\langle I/\sigma(I) \rangle$ ¹	1.46 (at 2.14Å)	Xtriage
Refinement program	PHENIX (1.13_2998: ???)	Depositor
R, R_{free}	0.207 , 0.243 0.207 , 0.242	Depositor DCC
R_{free} test set	2320 reflections (5.02%)	wwPDB-VP
Wilson B-factor (Å ²)	40.8	Xtriage
Anisotropy	0.283	Xtriage
Bulk solvent k_{sol} (e/Å ³), B_{sol} (Å ²)	0.37 , 61.9	EDS
L-test for twinning ²	$\langle L \rangle = 0.50$, $\langle L^2 \rangle = 0.33$	Xtriage
Estimated twinning fraction	No twinning to report.	Xtriage
F_o, F_c correlation	0.95	EDS
Total number of atoms	6322	wwPDB-VP
Average B, all atoms (Å ²)	53.0	wwPDB-VP

Xtriage's analysis on translational NCS is as follows: *The largest off-origin peak in the Patterson function is 5.18% of the height of the origin peak. No significant pseudotranslation is detected.*

¹Intensities estimated from amplitudes.

²Theoretical values of $\langle |L| \rangle$, $\langle L^2 \rangle$ for acentric reflections are 0.5, 0.333 respectively for untwinned datasets, and 0.375, 0.2 for perfectly twinned datasets.

5 Model quality [i](#)

5.1 Standard geometry [i](#)

Bond lengths and bond angles in the following residue types are not validated in this section: MG, ADP, CL, PO4, GCS, BTB, PEG

The Z score for a bond length (or angle) is the number of standard deviations the observed value is removed from the expected value. A bond length (or angle) with $|Z| > 5$ is considered an outlier worth inspection. RMSZ is the root-mean-square of all Z scores of the bond lengths (or angles).

Mol	Chain	Bond lengths		Bond angles	
		RMSZ	# Z >5	RMSZ	# Z >5
1	A	0.23	0/3190	0.40	0/4377
1	B	0.23	0/2951	0.40	0/4049
All	All	0.23	0/6141	0.40	0/8426

There are no bond length outliers.

There are no bond angle outliers.

There are no chirality outliers.

There are no planarity outliers.

5.2 Too-close contacts [i](#)

In the following table, the Non-H and H(model) columns list the number of non-hydrogen atoms and hydrogen atoms in the chain respectively. The H(added) column lists the number of hydrogen atoms added and optimized by MolProbity. The Clashes column lists the number of clashes within the asymmetric unit, whereas Symm-Clashes lists symmetry related clashes.

Mol	Chain	Non-H	H(model)	H(added)	Clashes	Symm-Clashes
1	A	3113	0	3056	7	0
1	B	2883	0	2746	8	0
2	A	1	0	0	0	0
2	B	1	0	0	0	0
3	A	14	0	19	1	0
4	A	21	0	30	0	0
5	B	27	0	12	0	0
6	B	2	0	0	0	0
7	B	5	0	0	0	0
8	B	12	0	13	0	0
9	A	153	0	0	0	0

Continued on next page...

Continued from previous page...

Mol	Chain	Non-H	H(model)	H(added)	Clashes	Symm-Clashes
9	B	90	0	0	0	0
All	All	6322	0	5876	16	0

The all-atom clashscore is defined as the number of clashes found per 1000 atoms (including hydrogen atoms). The all-atom clashscore for this structure is 1.

All (16) close contacts within the same asymmetric unit are listed below, sorted by their clash magnitude.

Atom-1	Atom-2	Interatomic distance (Å)	Clash overlap (Å)
1:B:61:PRO:HB2	1:B:73:SER:HB2	1.79	0.64
1:A:109:VAL:HG23	1:A:126:VAL:HG12	1.90	0.52
1:B:114:GLY:HA2	1:B:124:VAL:HA	1.94	0.49
1:A:57:ARG:NH2	1:A:174:GLU:OE2	2.41	0.48
3:A:502:BTB:O1	3:A:502:BTB:O4	2.32	0.47
1:A:30:PRO:HB2	1:A:53:ALA:HB3	1.95	0.47
1:B:49:VAL:HG21	1:B:172:LEU:HD22	1.97	0.46
1:B:357:THR:HB	1:B:360:VAL:HB	1.99	0.45
1:A:100:LEU:HD23	1:A:100:LEU:HA	1.85	0.44
1:A:354:VAL:HA	1:A:360:VAL:HG11	1.99	0.44
1:A:282:VAL:HG21	1:A:403:TYR:HE2	1.81	0.43
1:B:197:TRP:HB2	1:B:308:ARG:NH2	2.33	0.43
1:B:139:PRO:HG3	1:B:145:GLY:HA2	2.01	0.43
1:B:132:VAL:HG22	1:B:184:VAL:HG22	2.02	0.42
1:B:340:VAL:HG21	1:B:401:LEU:HB3	2.02	0.41
1:A:139:PRO:HG3	1:A:145:GLY:HA3	2.04	0.40

There are no symmetry-related clashes.

5.3 Torsion angles [i](#)

5.3.1 Protein backbone [i](#)

In the following table, the Percentiles column shows the percent Ramachandran outliers of the chain as a percentile score with respect to all X-ray entries followed by that with respect to entries of similar resolution.

The Analysed column shows the number of residues for which the backbone conformation was analysed, and the total number of residues.

Mol	Chain	Analysed	Favoured	Allowed	Outliers	Percentiles	
1	A	414/451 (92%)	404 (98%)	10 (2%)	0	100	100
1	B	383/451 (85%)	372 (97%)	11 (3%)	0	100	100
All	All	797/902 (88%)	776 (97%)	21 (3%)	0	100	100

There are no Ramachandran outliers to report.

5.3.2 Protein sidechains ⓘ

In the following table, the Percentiles column shows the percent sidechain outliers of the chain as a percentile score with respect to all X-ray entries followed by that with respect to entries of similar resolution.

The Analysed column shows the number of residues for which the sidechain conformation was analysed, and the total number of residues.

Mol	Chain	Analysed	Rotameric	Outliers	Percentiles	
1	A	301/335 (90%)	299 (99%)	2 (1%)	85	88
1	B	266/335 (79%)	266 (100%)	0	100	100
All	All	567/670 (85%)	565 (100%)	2 (0%)	92	93

All (2) residues with a non-rotameric sidechain are listed below:

Mol	Chain	Res	Type
1	A	390	ASP
1	A	391	ASP

Some sidechains can be flipped to improve hydrogen bonding and reduce clashes. There are no such sidechains identified.

5.3.3 RNA ⓘ

There are no RNA molecules in this entry.

5.4 Non-standard residues in protein, DNA, RNA chains ⓘ

There are no non-standard protein/DNA/RNA residues in this entry.

5.5 Carbohydrates [i](#)

There are no carbohydrates in this entry.

5.6 Ligand geometry [i](#)

Of 11 ligands modelled in this entry, 4 are monoatomic - leaving 7 for Mogul analysis.

In the following table, the Counts columns list the number of bonds (or angles) for which Mogul statistics could be retrieved, the number of bonds (or angles) that are observed in the model and the number of bonds (or angles) that are defined in the Chemical Component Dictionary. The Link column lists molecule types, if any, to which the group is linked. The Z score for a bond length (or angle) is the number of standard deviations the observed value is removed from the expected value. A bond length (or angle) with $|Z| > 2$ is considered an outlier worth inspection. RMSZ is the root-mean-square of all Z scores of the bond lengths (or angles).

Mol	Type	Chain	Res	Link	Bond lengths			Bond angles		
					Counts	RMSZ	$\# Z > 2$	Counts	RMSZ	$\# Z > 2$
3	BTB	A	502	-	13,13,13	0.41	0	7,16,16	0.46	0
4	PEG	A	503	-	6,6,6	0.43	0	5,5,5	0.35	0
4	PEG	A	504	-	6,6,6	0.43	0	5,5,5	0.30	0
4	PEG	A	505	-	6,6,6	0.43	0	5,5,5	0.32	0
5	ADP	B	502	6	24,29,29	1.02	1 (4%)	25,45,45	1.44	3 (12%)
7	PO4	B	505	6	4,4,4	0.88	0	6,6,6	0.45	0
8	GCS	B	506	-	12,12,12	0.56	0	16,17,17	0.77	0

In the following table, the Chirals column lists the number of chiral outliers, the number of chiral centers analysed, the number of these observed in the model and the number defined in the Chemical Component Dictionary. Similar counts are reported in the Torsion and Rings columns. '-' means no outliers of that kind were identified.

Mol	Type	Chain	Res	Link	Chirals	Torsions	Rings
3	BTB	A	502	-	-	0/21/21/21	0/0/0/0
4	PEG	A	503	-	-	0/4/4/4	0/0/0/0
4	PEG	A	504	-	-	0/4/4/4	0/0/0/0
4	PEG	A	505	-	-	0/4/4/4	0/0/0/0
5	ADP	B	502	6	-	0/12/32/32	0/3/3/3
7	PO4	B	505	6	-	0/0/0/0	0/0/0/0
8	GCS	B	506	-	-	0/2/22/22	0/1/1/1

All (1) bond length outliers are listed below:

Mol	Chain	Res	Type	Atoms	Z	Observed(Å)	Ideal(Å)
5	B	502	ADP	C5-C4	3.16	1.47	1.40

All (3) bond angle outliers are listed below:

Mol	Chain	Res	Type	Atoms	Z	Observed(°)	Ideal(°)
5	B	502	ADP	PA-O3A-PB	-3.61	121.09	132.57
5	B	502	ADP	N3-C2-N1	-3.07	123.73	128.68
5	B	502	ADP	C4-C5-N7	-2.62	106.67	109.40

There are no chirality outliers.

There are no torsion outliers.

There are no ring outliers.

1 monomer is involved in 1 short contact:

Mol	Chain	Res	Type	Clashes	Symm-Clashes
3	A	502	BTB	1	0

5.7 Other polymers [i](#)

There are no such residues in this entry.

5.8 Polymer linkage issues [i](#)

There are no chain breaks in this entry.

6 Fit of model and data

6.1 Protein, DNA and RNA chains

In the following table, the column labelled ‘#RSRZ> 2’ contains the number (and percentage) of RSRZ outliers, followed by percent RSRZ outliers for the chain as percentile scores relative to all X-ray entries and entries of similar resolution. The OWAB column contains the minimum, median, 95th percentile and maximum values of the occupancy-weighted average B-factor per residue. The column labelled ‘Q< 0.9’ lists the number of (and percentage) of residues with an average occupancy less than 0.9.

Mol	Chain	Analysed	<RSRZ>	#RSRZ>2	OWAB(Å ²)	Q<0.9
1	A	420/451 (93%)	0.36	5 (1%) 79 82	26, 43, 74, 101	0
1	B	397/451 (88%)	0.83	53 (13%) 3 4	32, 61, 99, 128	0
All	All	817/902 (90%)	0.59	58 (7%) 16 20	26, 50, 94, 128	0

All (58) RSRZ outliers are listed below:

Mol	Chain	Res	Type	RSRZ
1	B	167	TRP	6.0
1	B	96	ALA	5.1
1	B	190	GLY	4.6
1	B	89	ARG	4.4
1	B	189	PRO	4.1
1	B	115	ILE	3.9
1	B	174	GLU	3.9
1	B	88	ALA	3.8
1	B	104	THR	3.6
1	B	286	LEU	3.6
1	B	173	ALA	3.5
1	B	99	VAL	3.4
1	B	16	LEU	3.4
1	B	103	PHE	3.3
1	B	85	ALA	3.2
1	B	55	ALA	3.2
1	B	58	TRP	3.1
1	B	75	PRO	3.1
1	B	145	GLY	3.0
1	B	326	ALA	2.8
1	B	38	LEU	2.8
1	A	117	VAL	2.7
1	B	51	ARG	2.7
1	B	378	ASP	2.7

Continued on next page...

Continued from previous page...

Mol	Chain	Res	Type	RSRZ
1	B	244	ALA	2.7
1	B	172	LEU	2.7
1	B	80	ALA	2.6
1	B	50	VAL	2.6
1	B	310	ASP	2.6
1	B	188	LEU	2.6
1	B	161	THR	2.5
1	B	156	ALA	2.5
1	B	82	HIS	2.5
1	B	116	ILE	2.5
1	B	169	LEU	2.4
1	B	140	ALA	2.4
1	B	191	ALA	2.4
1	B	325	PRO	2.4
1	B	187	TYR	2.3
1	B	98	PHE	2.3
1	B	192	LEU	2.3
1	B	390	ASP	2.2
1	A	1	MET	2.2
1	B	60	VAL	2.2
1	A	116	ILE	2.2
1	B	76	GLY	2.2
1	B	52	SER	2.1
1	A	248	ALA	2.1
1	B	4	ASN	2.1
1	B	164	PRO	2.1
1	B	168	GLY	2.1
1	B	84	VAL	2.1
1	B	5	TRP	2.1
1	B	136	VAL	2.0
1	B	175	GLY	2.0
1	B	224	THR	2.0
1	B	323	VAL	2.0
1	A	190	GLY	2.0

6.2 Non-standard residues in protein, DNA, RNA chains ⓘ

There are no non-standard protein/DNA/RNA residues in this entry.

6.3 Carbohydrates [i](#)

There are no carbohydrates in this entry.

6.4 Ligands [i](#)

In the following table, the Atoms column lists the number of modelled atoms in the group and the number defined in the chemical component dictionary. The B-factors column lists the minimum, median, 95th percentile and maximum values of B factors of atoms in the group. The column labelled 'Q< 0.9' lists the number of atoms with occupancy less than 0.9.

Mol	Type	Chain	Res	Atoms	RSCC	RSR	B-factors(\AA^2)	Q<0.9
6	MG	B	504	1/1	0.60	0.11	53,53,53,53	0
6	MG	B	503	1/1	0.61	0.13	51,51,51,51	0
8	GCS	B	506	12/12	0.63	0.21	68,74,76,79	0
4	PEG	A	503	7/7	0.72	0.21	68,73,76,78	0
4	PEG	A	505	7/7	0.73	0.17	69,70,71,72	0
4	PEG	A	504	7/7	0.73	0.20	70,72,74,74	0
5	ADP	B	502	27/27	0.83	0.23	61,83,85,87	0
3	BTB	A	502	14/14	0.87	0.21	55,61,65,67	0
7	PO4	B	505	5/5	0.93	0.29	57,66,69,70	0
2	CL	B	501	1/1	0.98	0.12	39,39,39,39	0
2	CL	A	501	1/1	0.99	0.16	36,36,36,36	0

6.5 Other polymers [i](#)

There are no such residues in this entry.