



# Full wwPDB X-ray Structure Validation Report ⓘ

Mar 9, 2018 – 01:53 pm GMT

PDB ID : 4II2  
Title : Crystal structure of Ubiquitin activating enzyme 1 (Uba1) in complex with the Ub E2 Ubc4, ubiquitin, and ATP/Mg  
Authors : Olsen, S.K.; Lima, C.D.  
Deposited on : 2012-12-19  
Resolution : 2.20 Å(reported)

This is a Full wwPDB X-ray Structure Validation Report for a publicly released PDB entry.

We welcome your comments at [validation@mail.wwpdb.org](mailto:validation@mail.wwpdb.org)

A user guide is available at

<https://www.wwpdb.org/validation/2017/XrayValidationReportHelp>

with specific help available everywhere you see the ⓘ symbol.

---

The following versions of software and data (see [references ⓘ](#)) were used in the production of this report:

MolProbity : 4.02b-467  
Mogul : 1.7.3 (157068), CSD as539be (2018)  
Xtriage (Phenix) : 1.13  
EDS : trunk30967  
Percentile statistics : 20171227.v01 (using entries in the PDB archive December 27th 2017)  
Refmac : 5.8.0158  
CCP4 : 7.0 (Gargrove)  
Ideal geometry (proteins) : Engh & Huber (2001)  
Ideal geometry (DNA, RNA) : Parkinson et al. (1996)  
Validation Pipeline (wwPDB-VP) : trunk30967

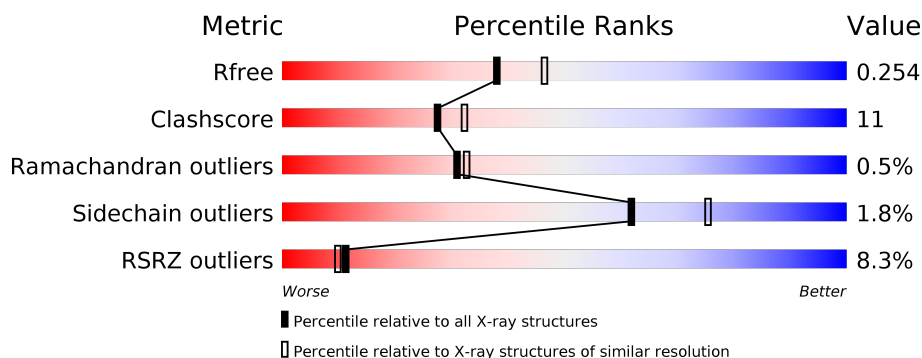
# 1 Overall quality at a glance

The following experimental techniques were used to determine the structure:

## *X-RAY DIFFRACTION*

The reported resolution of this entry is 2.20 Å.

Percentile scores (ranging between 0-100) for global validation metrics of the entry are shown in the following graphic. The table shows the number of entries on which the scores are based.



Metric	Whole archive (#Entries)	Similar resolution (#Entries, resolution range(Å))
$R_{free}$	111664	4343 (2.20-2.20)
Clashscore	122126	5027 (2.20-2.20)
Ramachandran outliers	120053	4952 (2.20-2.20)
Sidechain outliers	120020	4953 (2.20-2.20)
RSRZ outliers	108989	4245 (2.20-2.20)

The table below summarises the geometric issues observed across the polymeric chains and their fit to the electron density. The red, orange, yellow and green segments on the lower bar indicate the fraction of residues that contain outliers for  $\geq 3$ , 2, 1 and 0 types of geometric quality criteria. A grey segment represents the fraction of residues that are not modelled. The numeric value for each fraction is indicated below the corresponding segment, with a dot representing fractions  $\leq 5\%$ . The upper red bar (where present) indicates the fraction of residues that have poor fit to the electron density. The numeric value is given above the bar.

Mol	Chain	Length	Quality of chain
1	A	1001	<div> <div>9%</div> <div> <div></div> <div>77%</div> <div>20%</div> <div>.</div> </div> </div>
2	B	83	<div> <div>2%</div> <div> <div></div> <div>71%</div> <div>24%</div> <div>.</div> </div> </div>
3	C	163	<div> <div>3%</div> <div> <div></div> <div>61%</div> <div>28%</div> <div>.</div> <div>9%</div> </div> </div>

## 2 Entry composition

There are 9 unique types of molecules in this entry. The entry contains 10147 atoms, of which 0 are hydrogens and 0 are deuteriums.

In the tables below, the ZeroOcc column contains the number of atoms modelled with zero occupancy, the AltConf column contains the number of residues with at least one atom in alternate conformation and the Trace column contains the number of residues modelled with at most 2 atoms.

- Molecule 1 is a protein called Ubiquitin-activating enzyme E1 1.

Mol	Chain	Residues	Atoms					ZeroOcc	AltConf	Trace
1	A	977	Total	C	N	O	S	0	0	0
			7673	4907	1254	1473	39			

There is a discrepancy between the modelled and reference sequences:

Chain	Residue	Modelled	Actual	Comment	Reference
A	12	SER	-	EXPRESSION TAG	UNP O94609

- Molecule 2 is a protein called Ubiquitin-60S ribosomal protein L40.

Mol	Chain	Residues	Atoms					ZeroOcc	AltConf	Trace
2	B	80	Total	C	N	O	S	0	0	0
			648	396	129	122	1			

There are 16 discrepancies between the modelled and reference sequences:

Chain	Residue	Modelled	Actual	Comment	Reference
B	-6	MET	-	EXPRESSION TAG	UNP P0CH07
B	-5	HIS	-	EXPRESSION TAG	UNP P0CH07
B	-4	HIS	-	EXPRESSION TAG	UNP P0CH07
B	-3	HIS	-	EXPRESSION TAG	UNP P0CH07
B	-2	HIS	-	EXPRESSION TAG	UNP P0CH07
B	-1	HIS	-	EXPRESSION TAG	UNP P0CH07
B	0	HIS	-	EXPRESSION TAG	UNP P0CH07
B	6	ARG	LYS	ENGINEERED MUTATION	UNP P0CH07
B	11	ARG	LYS	ENGINEERED MUTATION	UNP P0CH07
B	27	ARG	LYS	ENGINEERED MUTATION	UNP P0CH07
B	28	ALA	SER	ENGINEERED MUTATION	UNP P0CH07
B	29	ARG	LYS	ENGINEERED MUTATION	UNP P0CH07
B	33	ARG	LYS	ENGINEERED MUTATION	UNP P0CH07
B	48	ARG	LYS	ENGINEERED MUTATION	UNP P0CH07
B	57	ALA	SER	ENGINEERED MUTATION	UNP P0CH07

*Continued on next page...*

*Continued from previous page...*

Chain	Residue	Modelled	Actual	Comment	Reference
B	63	ARG	LYS	ENGINEERED MUTATION	UNP P0CH07

- Molecule 3 is a protein called Ubiquitin-conjugating enzyme E2 4.

Mol	Chain	Residues	Atoms					ZeroOcc	AltConf	Trace
3	C	149	Total	C	N	O	S	2	0	0
			1170	750	199	218	3			

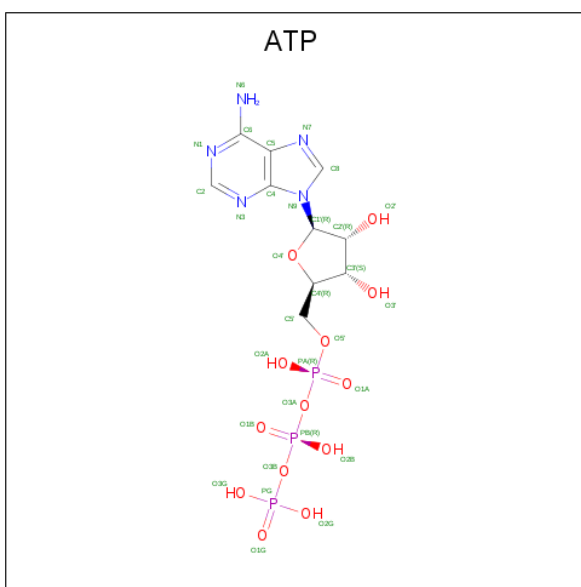
There are 18 discrepancies between the modelled and reference sequences:

Chain	Residue	Modelled	Actual	Comment	Reference
C	21	SER	CYS	ENGINEERED MUTATION	UNP P46595
C	107	SER	CYS	ENGINEERED MUTATION	UNP P46595
C	148	HIS	-	EXPRESSION TAG	UNP P46595
C	149	GLY	-	EXPRESSION TAG	UNP P46595
C	150	GLY	-	EXPRESSION TAG	UNP P46595
C	151	GLU	-	EXPRESSION TAG	UNP P46595
C	152	GLY	-	EXPRESSION TAG	UNP P46595
C	153	ALA	-	EXPRESSION TAG	UNP P46595
C	154	ALA	-	EXPRESSION TAG	UNP P46595
C	155	ALA	-	EXPRESSION TAG	UNP P46595
C	156	LEU	-	EXPRESSION TAG	UNP P46595
C	157	GLU	-	EXPRESSION TAG	UNP P46595
C	158	HIS	-	EXPRESSION TAG	UNP P46595
C	159	HIS	-	EXPRESSION TAG	UNP P46595
C	160	HIS	-	EXPRESSION TAG	UNP P46595
C	161	HIS	-	EXPRESSION TAG	UNP P46595
C	162	HIS	-	EXPRESSION TAG	UNP P46595
C	163	HIS	-	EXPRESSION TAG	UNP P46595

- Molecule 4 is MAGNESIUM ION (three-letter code: MG) (formula: Mg).

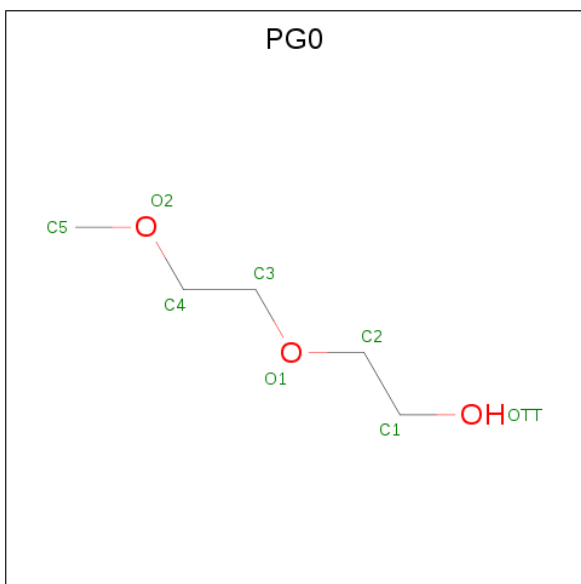
Mol	Chain	Residues	Atoms		ZeroOcc	AltConf
4	A	2	Total	Mg	0	0
			2	2		

- Molecule 5 is ADENOSINE-5'-TRIPHOSPHATE (three-letter code: ATP) (formula: C<sub>10</sub>H<sub>16</sub>N<sub>5</sub>O<sub>13</sub>P<sub>3</sub>).



Mol	Chain	Residues	Atoms					ZeroOcc	AltConf
5	A	1	Total	C	N	O	P	0	0
			31	10	5	13	3		

- Molecule 6 is 2-(2-METHOXYETHOXY)ETHANOL (three-letter code: PG0) (formula:  $C_5H_{12}O_3$ ).



Mol	Chain	Residues	Atoms			ZeroOcc	AltConf
6	A	1	Total	C	O	0	0
			7	4	3		

- Molecule 7 is 1,2-ETHANEDIOL (three-letter code: EDO) (formula:  $\text{C}_2\text{H}_6\text{O}_2$ ).



Mol	Chain	Residues	Atoms			ZeroOcc	AltConf
7	A	1	Total	C	O	0	0
			4	2	2		
7	A	1	Total	C	O	0	0
			4	2	2		
7	A	1	Total	C	O	0	0
			4	2	2		
7	A	1	Total	C	O	0	0
			4	2	2		
7	A	1	Total	C	O	0	0
			4	2	2		
7	B	1	Total	C	O	0	0
			4	2	2		

- Molecule 8 is SULFATE ION (three-letter code: SO4) (formula: O<sub>4</sub>S).



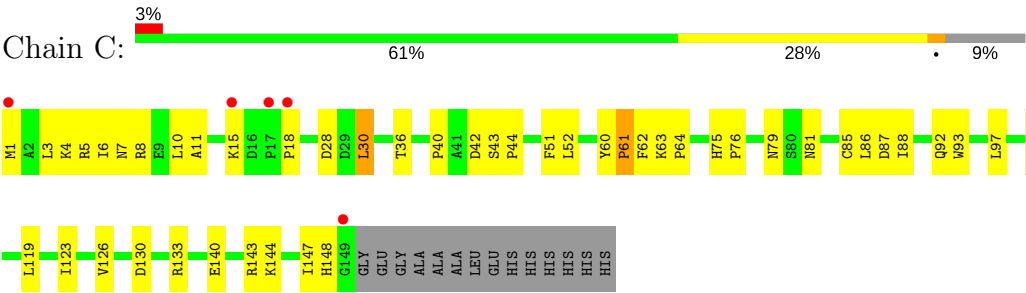
Mol	Chain	Residues	Atoms			ZeroOcc	AltConf
8	A	1	Total	O	S	0	0
			5	4	1		
8	A	1	Total	O	S	0	0
			5	4	1		
8	A	1	Total	O	S	0	0
			5	4	1		
8	B	1	Total	O	S	0	0
			5	4	1		

- Molecule 9 is water.

Mol	Chain	Residues	Atoms		ZeroOcc	AltConf
9	A	471	Total	O	0	0
			471	471		
9	B	41	Total	O	0	0
			41	41		
9	C	56	Total	O	0	0
			56	56		







## 4 Data and refinement statistics

Property	Value	Source
Space group	P 21 21 21	Depositor
Cell constants a, b, c, $\alpha$ , $\beta$ , $\gamma$	81.60Å 111.20Å 181.30Å 90.00° 90.00° 90.00°	Depositor
Resolution (Å)	40.00 – 2.20 39.80 – 2.20	Depositor EDS
% Data completeness (in resolution range)	99.8 (40.00-2.20) 99.8 (39.80-2.20)	Depositor EDS
$R_{merge}$	0.09	Depositor
$R_{sym}$	(Not available)	Depositor
$\langle I/\sigma(I) \rangle$ <sup>1</sup>	4.53 (at 2.20Å)	Xtriage
Refinement program	CNS	Depositor
R, $R_{free}$	0.213 , 0.254 0.213 , 0.254	Depositor DCC
$R_{free}$ test set	4256 reflections (5.05%)	wwPDB-VP
Wilson B-factor (Å <sup>2</sup> )	38.8	Xtriage
Anisotropy	0.679	Xtriage
Bulk solvent $k_{sol}$ (e/Å <sup>3</sup> ), $B_{sol}$ (Å <sup>2</sup> )	0.33 , 48.1	EDS
L-test for twinning <sup>2</sup>	$\langle  L  \rangle = 0.49$ , $\langle L^2 \rangle = 0.33$	Xtriage
Estimated twinning fraction	No twinning to report.	Xtriage
$F_o, F_c$ correlation	0.95	EDS
Total number of atoms	10147	wwPDB-VP
Average B, all atoms (Å <sup>2</sup> )	54.0	wwPDB-VP

Xtriage's analysis on translational NCS is as follows: *The largest off-origin peak in the Patterson function is 2.75% of the height of the origin peak. No significant pseudotranslation is detected.*

<sup>1</sup>Intensities estimated from amplitudes.

<sup>2</sup>Theoretical values of  $\langle |L| \rangle$ ,  $\langle L^2 \rangle$  for acentric reflections are 0.5, 0.333 respectively for untwinned datasets, and 0.375, 0.2 for perfectly twinned datasets.

## 5 Model quality [i](#)

### 5.1 Standard geometry [i](#)

Bond lengths and bond angles in the following residue types are not validated in this section: ATP, MG, EDO, PG0, SO4

The Z score for a bond length (or angle) is the number of standard deviations the observed value is removed from the expected value. A bond length (or angle) with  $|Z| > 5$  is considered an outlier worth inspection. RMSZ is the root-mean-square of all Z scores of the bond lengths (or angles).

Mol	Chain	Bond lengths		Bond angles	
		RMSZ	# Z  >5	RMSZ	# Z  >5
1	A	0.35	0/7844	0.56	0/10618
2	B	0.33	0/656	0.61	0/883
3	C	0.31	0/1206	0.56	0/1647
All	All	0.35	0/9706	0.56	0/13148

There are no bond length outliers.

There are no bond angle outliers.

There are no chirality outliers.

There are no planarity outliers.

### 5.2 Too-close contacts [i](#)

In the following table, the Non-H and H(model) columns list the number of non-hydrogen atoms and hydrogen atoms in the chain respectively. The H(added) column lists the number of hydrogen atoms added and optimized by MolProbity. The Clashes column lists the number of clashes within the asymmetric unit, whereas Symm-Clashes lists symmetry related clashes.

Mol	Chain	Non-H	H(model)	H(added)	Clashes	Symm-Clashes
1	A	7673	0	7607	153	0
2	B	648	0	648	22	0
3	C	1170	0	1149	41	0
4	A	2	0	0	0	0
5	A	31	0	12	2	0
6	A	7	0	8	1	0
7	A	24	0	25	0	0
7	B	4	0	4	0	0
8	A	15	0	0	0	0
8	B	5	0	0	0	0

*Continued on next page...*

*Continued from previous page...*

Mol	Chain	Non-H	H(model)	H(added)	Clashes	Symm-Clashes
9	A	471	0	0	6	0
9	B	41	0	0	2	0
9	C	56	0	0	0	0
All	All	10147	0	9453	205	0

The all-atom clashscore is defined as the number of clashes found per 1000 atoms (including hydrogen atoms). The all-atom clashscore for this structure is 11.

All (205) close contacts within the same asymmetric unit are listed below, sorted by their clash magnitude.

Atom-1	Atom-2	Interatomic distance (Å)	Clash overlap (Å)
1:A:290:GLN:HB3	1:A:343:ILE:HD11	1.57	0.86
1:A:926:THR:HA	1:A:969:LYS:HA	1.59	0.85
1:A:653:ASP:HA	1:A:657:THR:HB	1.59	0.84
1:A:218:MET:HG3	1:A:246:GLY:HA3	1.61	0.82
2:B:1:MET:HB3	2:B:63:ARG:HG2	1.61	0.82
1:A:697:THR:HG22	1:A:699:GLN:HE21	1.45	0.79
1:A:634:LEU:HD12	1:A:634:LEU:H	1.49	0.78
1:A:656:VAL:HG23	1:A:657:THR:H	1.50	0.76
3:C:87:ASP:HB3	3:C:92:GLN:HG3	1.71	0.72
1:A:209:PHE:HE1	1:A:228:LYS:HG2	1.54	0.72
1:A:904:PRO:HG2	1:A:915:LYS:HB3	1.71	0.72
2:B:22:THR:H	2:B:25:ASN:HD22	1.38	0.68
1:A:81:TYR:CD2	1:A:444:LYS:HD2	2.29	0.68
1:A:210:VAL:HG12	1:A:256:GLN:HA	1.75	0.67
1:A:81:TYR:CE2	1:A:444:LYS:HD2	2.29	0.67
1:A:943:THR:HG21	1:A:996:ASP:OD2	1.94	0.67
1:A:632:ASN:HB3	1:A:635:GLU:HB2	1.76	0.66
3:C:126:VAL:HG11	3:C:133:ARG:HH21	1.61	0.65
1:A:954:ALA:HB3	1:A:957:GLN:HG3	1.79	0.64
3:C:100:SER:O	3:C:104:LEU:HD13	1.96	0.64
1:A:716:ILE:HD13	1:A:748:GLU:HG2	1.79	0.64
1:A:25:TYR:CE1	1:A:846:PHE:HB2	2.33	0.63
1:A:281:ASP:OD2	6:A:1104:PG0:H11	1.98	0.63
3:C:40:PRO:HG2	3:C:111:THR:HG22	1.81	0.63
1:A:871:VAL:HA	1:A:874:VAL:CG1	2.28	0.63
1:A:218:MET:HB2	1:A:221:LEU:HD13	1.81	0.63
1:A:209:PHE:CE1	1:A:228:LYS:HG2	2.33	0.63
1:A:656:VAL:HG23	1:A:657:THR:N	2.15	0.62
3:C:86:LEU:HG	3:C:88:ILE:HG22	1.81	0.62
1:A:625:ASN:OD1	1:A:804:ARG:HG3	2.00	0.61

*Continued on next page...*

*Continued from previous page...*

Atom-1	Atom-2	Interatomic distance (Å)	Clash overlap (Å)
3:C:140:GLU:CD	3:C:143:ARG:HH21	2.04	0.61
1:A:638:LEU:O	1:A:638:LEU:HD23	1.99	0.61
1:A:870:LEU:O	1:A:874:VAL:HG12	2.01	0.61
1:A:747:TYR:O	1:A:751:LEU:HD23	2.01	0.60
1:A:334:PHE:CZ	1:A:336:VAL:HB	2.37	0.60
2:B:22:THR:H	2:B:25:ASN:ND2	1.99	0.60
1:A:515:PRO:O	1:A:518:GLU:HG3	2.02	0.60
3:C:6:ILE:HG21	3:C:30:LEU:O	2.00	0.60
1:A:22:ARG:HD2	5:A:1103:ATP:O2G	2.01	0.59
1:A:74:ILE:HD13	1:A:88:ILE:HD11	1.84	0.59
1:A:217:GLY:HA3	1:A:249:GLY:HA2	1.85	0.58
3:C:5:ARG:NH2	3:C:61:PRO:HG3	2.18	0.58
2:B:74:ARG:HD2	9:B:207:HOH:O	2.02	0.58
1:A:112:VAL:HG11	1:A:119:TYR:OH	2.03	0.58
1:A:957:GLN:HE22	1:A:965:ARG:HH12	1.51	0.58
3:C:130:ASP:OD2	3:C:133:ARG:HB2	2.04	0.57
1:A:288:PRO:HB2	1:A:289:PRO:HD3	1.87	0.57
1:A:796:PRO:HG2	1:A:799:SER:HB3	1.87	0.57
3:C:126:VAL:HG11	3:C:133:ARG:NH2	2.19	0.56
1:A:975:GLU:OE1	1:A:981:LYS:HG3	2.05	0.56
1:A:523:ASP:OD2	1:A:988:HIS:HD2	1.88	0.56
1:A:951:LEU:HB2	3:C:30:LEU:HD11	1.87	0.56
1:A:944:MET:HB3	1:A:994:CYS:HB2	1.88	0.56
1:A:913:ILE:N	1:A:913:ILE:HD12	2.20	0.56
1:A:912:GLU:C	1:A:913:ILE:HD12	2.26	0.56
1:A:935:GLN:O	1:A:939:GLY:HA2	2.06	0.55
1:A:940:LEU:HD22	1:A:1003:VAL:HG21	1.87	0.55
2:B:63:ARG:HG3	9:B:226:HOH:O	2.07	0.55
3:C:1:MET:HB2	3:C:4:LYS:HB2	1.88	0.55
1:A:213:THR:HG22	9:A:1302:HOH:O	2.06	0.55
1:A:647:VAL:O	1:A:651:ILE:HG12	2.07	0.55
2:B:17:VAL:HG12	2:B:29:ARG:NH1	2.21	0.55
1:A:201:ARG:HD3	2:B:33:ARG:O	2.07	0.55
1:A:548:ARG:HD3	9:A:1452:HOH:O	2.05	0.55
1:A:997:ASP:HB2	1:A:1003:VAL:HG13	1.88	0.54
2:B:45:PHE:HB2	2:B:67:LEU:HD22	1.89	0.53
1:A:1005:VAL:CG2	1:A:1006:PRO:HD2	2.39	0.53
1:A:441:GLU:HG3	1:A:859:THR:HG22	1.91	0.53
1:A:401:GLU:O	1:A:404:LYS:HG2	2.09	0.53
1:A:619:GLN:HB2	1:A:620:PRO:HD3	1.90	0.53
1:A:433:VAL:HG13	1:A:513:VAL:HG21	1.90	0.52

*Continued on next page...*

*Continued from previous page...*

Atom-1	Atom-2	Interatomic distance (Å)	Clash overlap (Å)
1:A:47:GLY:HA3	1:A:79:SER:OG	2.08	0.52
1:A:942:VAL:HG22	1:A:993:ILE:HD11	1.91	0.52
3:C:140:GLU:HG3	3:C:144:LYS:HE3	1.92	0.52
1:A:181:LEU:HD12	1:A:204:LEU:HD23	1.92	0.52
1:A:944:MET:HG3	3:C:7:ASN:CG	2.30	0.52
3:C:1:MET:CG	3:C:4:LYS:HD2	2.40	0.51
1:A:966:LEU:N	1:A:967:PRO:HD2	2.24	0.51
1:A:502:LEU:HD13	1:A:506:ILE:HD11	1.93	0.51
1:A:906:MET:HE3	1:A:915:LYS:HB2	1.93	0.51
1:A:35:MET:HG3	1:A:374:THR:HG22	1.93	0.51
3:C:76:PRO:HG3	3:C:123:ILE:HG22	1.93	0.51
1:A:190:ASP:OD2	1:A:243:LYS:HG2	2.11	0.50
1:A:566:GLY:HA2	2:B:73:LEU:HD12	1.93	0.50
1:A:870:LEU:C	1:A:870:LEU:HD23	2.31	0.50
1:A:926:THR:OG1	1:A:929:GLU:HG3	2.11	0.50
1:A:957:GLN:HE22	1:A:965:ARG:NH1	2.07	0.50
3:C:126:VAL:HG13	3:C:133:ARG:HD3	1.92	0.50
1:A:226:PRO:HB3	1:A:257:VAL:HG21	1.93	0.50
1:A:25:TYR:CZ	1:A:846:PHE:HB2	2.47	0.50
1:A:927:LEU:HD23	1:A:966:LEU:HD23	1.94	0.50
1:A:266:LYS:HB3	1:A:270:GLU:HG3	1.94	0.49
1:A:566:GLY:CA	2:B:73:LEU:HD12	2.41	0.49
1:A:951:LEU:HB2	3:C:30:LEU:CD1	2.42	0.49
3:C:43:SER:HB2	3:C:44:PRO:HD2	1.95	0.49
1:A:250:TYR:HD1	1:A:251:ASN:ND2	2.10	0.49
3:C:40:PRO:CG	3:C:111:THR:HG22	2.43	0.49
1:A:930:LEU:HD23	1:A:930:LEU:O	2.13	0.48
1:A:190:ASP:HA	1:A:242:VAL:HG23	1.96	0.48
1:A:29:HIS:O	1:A:33:LYS:HG3	2.13	0.48
1:A:926:THR:HG22	1:A:969:LYS:HG2	1.96	0.48
1:A:630:SER:OG	1:A:633:PHE:HB2	2.13	0.48
1:A:920:TYR:HE2	1:A:1005:VAL:HG22	1.79	0.48
1:A:97:VAL:HG13	1:A:98:SER:N	2.29	0.48
1:A:35:MET:HG3	1:A:374:THR:CG2	2.44	0.48
1:A:166:PHE:CZ	1:A:372:ALA:HB2	2.50	0.47
1:A:433:VAL:HG12	1:A:536:LEU:HD21	1.95	0.47
1:A:390:GLU:O	1:A:877:LYS:HE3	2.14	0.47
2:B:16:GLU:O	2:B:29:ARG:NH1	2.43	0.47
1:A:787:LEU:C	1:A:787:LEU:HD23	2.34	0.47
1:A:209:PHE:HA	1:A:227:ARG:O	2.14	0.47
1:A:712:LEU:HD13	1:A:833:ASN:ND2	2.29	0.47

*Continued on next page...*

*Continued from previous page...*

Atom-1	Atom-2	Interatomic distance (Å)	Clash overlap (Å)
3:C:40:PRO:CB	3:C:111:THR:HG22	2.45	0.46
1:A:950:SER:HA	3:C:28:ASP:O	2.15	0.46
3:C:133:ARG:HG2	3:C:133:ARG:HH21	1.80	0.46
3:C:11:ALA:O	3:C:15:LYS:HG3	2.15	0.46
1:A:1001:GLU:HG3	1:A:1002:ASP:H	1.81	0.46
1:A:381:LYS:HA	1:A:382:GLN:HA	1.71	0.46
2:B:18:GLU:HB2	2:B:21:ASP:OD1	2.15	0.46
1:A:537:ASP:HA	2:B:74:ARG:O	2.16	0.46
1:A:201:ARG:HA	1:A:234:PRO:O	2.16	0.46
1:A:952:LEU:HD23	1:A:977:ILE:HD12	1.97	0.46
1:A:993:ILE:HG23	1:A:1005:VAL:CG1	2.46	0.46
3:C:85:CYS:SG	3:C:119:LEU:HB2	2.56	0.46
3:C:87:ASP:HB3	3:C:92:GLN:CG	2.43	0.46
1:A:66:LEU:HD11	1:A:100:LEU:HD12	1.97	0.46
3:C:42:ASP:OD1	3:C:111:THR:HB	2.15	0.45
3:C:1:MET:HG2	3:C:4:LYS:HD2	1.96	0.45
1:A:608:TRP:CD2	1:A:830:ARG:HD2	2.51	0.45
1:A:565:LYS:HB3	2:B:73:LEU:HD11	1.98	0.45
1:A:663:PHE:O	1:A:666:CYS:HB2	2.16	0.45
1:A:1001:GLU:HG3	1:A:1002:ASP:N	2.31	0.45
2:B:-2:HIS:CG	2:B:20:SER:HB3	2.52	0.45
1:A:940:LEU:HB3	1:A:995:CYS:HB3	1.99	0.45
1:A:474:ARG:HG2	1:A:474:ARG:HH11	1.82	0.44
1:A:787:LEU:HD23	1:A:787:LEU:O	2.16	0.44
2:B:26:VAL:HG21	2:B:56:LEU:HD21	1.99	0.44
1:A:544:TYR:OH	1:A:548:ARG:HD2	2.17	0.44
1:A:98:SER:O	1:A:102:GLU:HG3	2.18	0.44
3:C:88:ILE:HG13	3:C:97:LEU:HD13	1.98	0.44
1:A:958:PRO:HA	1:A:959:PRO:HD3	1.91	0.44
1:A:183:GLY:O	1:A:253:VAL:HG13	2.18	0.44
1:A:635:GLU:HA	1:A:635:GLU:OE1	2.18	0.44
1:A:907:LYS:HA	1:A:911:LYS:O	2.17	0.44
3:C:64:PRO:HB3	3:C:93:TRP:CG	2.52	0.43
1:A:627:TYR:CE1	1:A:634:LEU:HD11	2.52	0.43
1:A:29:HIS:HD2	9:A:1498:HOH:O	2.00	0.43
1:A:465:ASP:HB2	5:A:1103:ATP:O2'	2.18	0.43
1:A:158:LEU:O	1:A:387:ASP:HA	2.19	0.43
1:A:250:TYR:CD1	1:A:251:ASN:ND2	2.87	0.43
1:A:267:SER:OG	1:A:270:GLU:HG2	2.18	0.43
1:A:871:VAL:HA	1:A:874:VAL:HG13	2.01	0.43
1:A:656:VAL:CG2	1:A:657:THR:H	2.27	0.43

*Continued on next page...*

*Continued from previous page...*

Atom-1	Atom-2	Interatomic distance (Å)	Clash overlap (Å)
1:A:746:ILE:O	1:A:750:VAL:HG23	2.19	0.43
1:A:433:VAL:HG13	1:A:513:VAL:CG2	2.48	0.43
3:C:3:LEU:C	3:C:3:LEU:HD23	2.39	0.43
1:A:983:GLU:N	1:A:983:GLU:CD	2.72	0.43
3:C:147:ILE:O	3:C:147:ILE:HG22	2.19	0.43
1:A:550:VAL:HA	1:A:917:TRP:CZ3	2.54	0.43
3:C:133:ARG:NH2	3:C:133:ARG:HG2	2.34	0.43
1:A:131:THR:CG2	1:A:135:LYS:HB2	2.49	0.42
1:A:526:PHE:O	1:A:554:LYS:HE3	2.18	0.42
1:A:376:LYS:O	1:A:377:PHE:HB2	2.18	0.42
1:A:225:THR:O	1:A:227:ARG:HD2	2.19	0.42
1:A:957:GLN:HB3	1:A:961:LYS:HD2	2.00	0.42
1:A:624:VAL:O	1:A:628:LEU:HG	2.19	0.42
1:A:893:GLY:HA2	9:A:1490:HOH:O	2.19	0.42
1:A:22:ARG:HG3	1:A:474:ARG:NH1	2.35	0.42
1:A:404:LYS:NZ	1:A:406:ARG:NH1	2.67	0.42
2:B:1:MET:HB2	2:B:63:ARG:HA	2.02	0.42
1:A:209:PHE:HB3	1:A:226:PRO:HB2	2.02	0.42
1:A:588:LYS:HE3	1:A:590:PHE:CE1	2.55	0.42
3:C:36:THR:HG22	3:C:51:PHE:CD1	2.54	0.42
3:C:79:ASN:OD1	3:C:81:ASN:HB2	2.19	0.42
2:B:1:MET:CB	2:B:63:ARG:HG2	2.41	0.41
1:A:1005:VAL:HG23	1:A:1006:PRO:HD2	2.02	0.41
1:A:181:LEU:CD1	1:A:204:LEU:HD23	2.50	0.41
1:A:957:GLN:HB2	1:A:962:LEU:HD21	2.02	0.41
1:A:952:LEU:HA	1:A:977:ILE:CD1	2.50	0.41
3:C:60:TYR:CD1	3:C:61:PRO:HA	2.55	0.41
1:A:930:LEU:HD23	1:A:930:LEU:C	2.41	0.41
1:A:646:GLU:O	1:A:650:ASN:ND2	2.53	0.41
1:A:651:ILE:O	1:A:655:LEU:HB2	2.20	0.41
1:A:757:PRO:HD2	9:A:1486:HOH:O	2.20	0.41
1:A:898:SER:HA	2:B:47:GLY:O	2.20	0.41
1:A:652:ARG:HH11	1:A:790:ILE:HD12	1.86	0.41
2:B:0:HIS:ND1	2:B:18:GLU:OE2	2.54	0.41
1:A:897:PHE:O	2:B:47:GLY:HA2	2.21	0.41
3:C:51:PHE:C	3:C:52:LEU:HD12	2.40	0.41
1:A:943:THR:HA	1:A:955:ASN:HB3	2.02	0.41
1:A:993:ILE:HG23	1:A:1005:VAL:HG11	2.03	0.41
1:A:920:TYR:HE2	1:A:1005:VAL:CG2	2.33	0.41
3:C:75:HIS:HA	3:C:76:PRO:HD3	1.81	0.41
1:A:671:ARG:HD3	1:A:751:LEU:HD12	2.04	0.41

*Continued on next page...*



Continued from previous page...

Atom-1	Atom-2	Interatomic distance (Å)	Clash overlap (Å)
2:B:63:ARG:O	2:B:64:GLU:HB2	2.21	0.41
1:A:322:PHE:CD2	1:A:326:LYS:HE3	2.56	0.40
1:A:627:TYR:HE1	1:A:634:LEU:HD11	1.86	0.40
1:A:997:ASP:N	1:A:1001:GLU:O	2.49	0.40
1:A:838:PRO:HB3	9:A:1466:HOH:O	2.21	0.40
1:A:401:GLU:OE2	1:A:404:LYS:HE2	2.20	0.40
1:A:828:ASN:O	1:A:832:MET:HG3	2.22	0.40
3:C:62:PHE:C	3:C:63:LYS:HD2	2.42	0.40
3:C:93:TRP:HA	3:C:97:LEU:HD12	2.03	0.40
1:A:192:GLY:HA3	1:A:240:GLY:O	2.21	0.40
3:C:4:LYS:O	3:C:8:ARG:HG3	2.21	0.40

There are no symmetry-related clashes.

## 5.3 Torsion angles [i](#)

### 5.3.1 Protein backbone [i](#)

In the following table, the Percentiles column shows the percent Ramachandran outliers of the chain as a percentile score with respect to all X-ray entries followed by that with respect to entries of similar resolution.

The Analysed column shows the number of residues for which the backbone conformation was analysed, and the total number of residues.

Mol	Chain	Analysed	Favoured	Allowed	Outliers	Percentiles	
1	A	973/1001 (97%)	918 (94%)	51 (5%)	4 (0%)	36	39
2	B	78/83 (94%)	77 (99%)	1 (1%)	0	100	100
3	C	147/163 (90%)	142 (97%)	3 (2%)	2 (1%)	12	9
All	All	1198/1247 (96%)	1137 (95%)	55 (5%)	6 (0%)	31	33

All (6) Ramachandran outliers are listed below:

Mol	Chain	Res	Type
1	A	21	SER
3	C	148	HIS
1	A	998	ALA
1	A	756	PRO
3	C	18	PRO
1	A	761	PRO

### 5.3.2 Protein sidechains ⓘ

In the following table, the Percentiles column shows the percent sidechain outliers of the chain as a percentile score with respect to all X-ray entries followed by that with respect to entries of similar resolution.

The Analysed column shows the number of residues for which the sidechain conformation was analysed, and the total number of residues.

Mol	Chain	Analysed	Rotameric	Outliers	Percentiles	
1	A	857/877 (98%)	843 (98%)	14 (2%)	65	79
2	B	70/74 (95%)	69 (99%)	1 (1%)	69	82
3	C	130/140 (93%)	126 (97%)	4 (3%)	43	55
All	All	1057/1091 (97%)	1038 (98%)	19 (2%)	62	75

All (19) residues with a non-rotameric sidechain are listed below:

Mol	Chain	Res	Type
1	A	22	ARG
1	A	80	GLN
1	A	128	VAL
1	A	198	GLU
1	A	299	SER
1	A	387	ASP
1	A	392	LEU
1	A	409	ARG
1	A	464	MET
1	A	523	ASP
1	A	527	GLU
1	A	874	VAL
1	A	919	ARG
1	A	999	ASN
2	B	74	ARG
3	C	10	LEU
3	C	30	LEU
3	C	61	PRO
3	C	111	THR

Some sidechains can be flipped to improve hydrogen bonding and reduce clashes. All (9) such sidechains are listed below:

Mol	Chain	Res	Type
1	A	146	ASN
1	A	251	ASN

*Continued on next page...*

*Continued from previous page...*

Mol	Chain	Res	Type
1	A	650	ASN
1	A	688	ASN
1	A	699	GLN
1	A	957	GLN
1	A	988	HIS
1	A	999	ASN
2	B	25	ASN

### 5.3.3 RNA [i](#)

There are no RNA molecules in this entry.

## 5.4 Non-standard residues in protein, DNA, RNA chains [i](#)

There are no non-standard protein/DNA/RNA residues in this entry.

## 5.5 Carbohydrates [i](#)

There are no carbohydrates in this entry.

## 5.6 Ligand geometry [i](#)

Of 15 ligands modelled in this entry, 2 are monoatomic - leaving 13 for Mogul analysis.

In the following table, the Counts columns list the number of bonds (or angles) for which Mogul statistics could be retrieved, the number of bonds (or angles) that are observed in the model and the number of bonds (or angles) that are defined in the Chemical Component Dictionary. The Link column lists molecule types, if any, to which the group is linked. The Z score for a bond length (or angle) is the number of standard deviations the observed value is removed from the expected value. A bond length (or angle) with  $|Z| > 2$  is considered an outlier worth inspection. RMSZ is the root-mean-square of all Z scores of the bond lengths (or angles).

Mol	Type	Chain	Res	Link	Bond lengths			Bond angles		
					Counts	RMSZ	$\# Z  > 2$	Counts	RMSZ	$\# Z  > 2$
5	ATP	A	1103	4	27,33,33	1.24	3 (11%)	27,52,52	2.06	5 (18%)
6	PG0	A	1104	-	6,6,7	0.82	0	5,5,6	1.04	0
7	EDO	A	1105	-	3,3,3	1.20	0	2,2,2	0.20	0
7	EDO	A	1106	-	3,3,3	1.14	0	2,2,2	0.20	0
7	EDO	A	1107	-	3,3,3	1.15	0	2,2,2	0.22	0
7	EDO	A	1108	-	3,3,3	1.14	0	2,2,2	0.22	0
7	EDO	A	1109	-	3,3,3	1.09	0	2,2,2	0.26	0

Mol	Type	Chain	Res	Link	Bond lengths			Bond angles		
					Counts	RMSZ	# Z  > 2	Counts	RMSZ	# Z  > 2
7	EDO	A	1110	-	3,3,3	1.12	0	2,2,2	0.23	0
8	SO4	A	1111	-	4,4,4	0.36	0	6,6,6	0.07	0
8	SO4	A	1112	-	4,4,4	0.35	0	6,6,6	0.06	0
8	SO4	A	1113	-	4,4,4	0.34	0	6,6,6	0.08	0
7	EDO	B	101	-	3,3,3	1.15	0	2,2,2	0.20	0
8	SO4	B	102	-	4,4,4	0.34	0	6,6,6	0.07	0

In the following table, the Chirals column lists the number of chiral outliers, the number of chiral centers analysed, the number of these observed in the model and the number defined in the Chemical Component Dictionary. Similar counts are reported in the Torsion and Rings columns. '-' means no outliers of that kind were identified.

Mol	Type	Chain	Res	Link	Chirals	Torsions	Rings
5	ATP	A	1103	4	-	0/18/38/38	0/3/3/3
6	PG0	A	1104	-	-	0/4/4/5	0/0/0/0
7	EDO	A	1105	-	-	0/1/1/1	0/0/0/0
7	EDO	A	1106	-	-	0/1/1/1	0/0/0/0
7	EDO	A	1107	-	-	0/1/1/1	0/0/0/0
7	EDO	A	1108	-	-	0/1/1/1	0/0/0/0
7	EDO	A	1109	-	-	0/1/1/1	0/0/0/0
7	EDO	A	1110	-	-	0/1/1/1	0/0/0/0
8	SO4	A	1111	-	-	0/0/0/0	0/0/0/0
8	SO4	A	1112	-	-	0/0/0/0	0/0/0/0
8	SO4	A	1113	-	-	0/0/0/0	0/0/0/0
7	EDO	B	101	-	-	0/1/1/1	0/0/0/0
8	SO4	B	102	-	-	0/0/0/0	0/0/0/0

All (3) bond length outliers are listed below:

Mol	Chain	Res	Type	Atoms	Z	Observed(Å)	Ideal(Å)
5	A	1103	ATP	PG-O3B	2.78	1.64	1.60
5	A	1103	ATP	C5-C4	2.83	1.46	1.40
5	A	1103	ATP	C2-N3	2.95	1.36	1.32

All (5) bond angle outliers are listed below:

Mol	Chain	Res	Type	Atoms	Z	Observed(°)	Ideal(°)
5	A	1103	ATP	N3-C2-N1	-8.52	121.57	128.86
5	A	1103	ATP	C1'-N9-C4	-2.52	122.27	126.64
5	A	1103	ATP	C4-C5-N7	-2.19	107.29	109.41
5	A	1103	ATP	O2B-PB-O1B	2.03	122.44	112.14
5	A	1103	ATP	C2-N1-C6	2.27	122.61	118.75

There are no chirality outliers.

There are no torsion outliers.

There are no ring outliers.

2 monomers are involved in 3 short contacts:

Mol	Chain	Res	Type	Clashes	Symm-Clashes
5	A	1103	ATP	2	0
6	A	1104	PG0	1	0

## 5.7 Other polymers [i](#)

There are no such residues in this entry.

## 5.8 Polymer linkage issues [i](#)

There are no chain breaks in this entry.

## 6 Fit of model and data

### 6.1 Protein, DNA and RNA chains

In the following table, the column labelled ‘#RSRZ > 2’ contains the number (and percentage) of RSRZ outliers, followed by percent RSRZ outliers for the chain as percentile scores relative to all X-ray entries and entries of similar resolution. The OWAB column contains the minimum, median, 95<sup>th</sup> percentile and maximum values of the occupancy-weighted average B-factor per residue. The column labelled ‘Q < 0.9’ lists the number of (and percentage) of residues with an average occupancy less than 0.9.

Mol	Chain	Analysed	<RSRZ>	#RSRZ>2	OWAB(Å <sup>2</sup> )	Q<0.9
1	A	977/1001 (97%)	0.27	93 (9%) <b>8</b> <b>7</b>	28, 46, 100, 120	0
2	B	80/83 (96%)	-0.18	2 (2%) 57 55	32, 52, 67, 91	0
3	C	149/163 (91%)	-0.05	5 (3%) 45 43	43, 55, 78, 90	2 (1%)
All	All	1206/1247 (96%)	0.20	100 (8%) <b>11</b> <b>10</b>	28, 49, 97, 120	2 (0%)

All (100) RSRZ outliers are listed below:

Mol	Chain	Res	Type	RSRZ
1	A	191	ASP	6.4
1	A	800	LEU	6.3
1	A	801	VAL	6.3
1	A	803	PHE	5.5
1	A	243	LYS	5.4
1	A	334	PHE	5.1
1	A	192	GLY	5.0
1	A	242	VAL	4.8
1	A	335	ASP	4.8
1	A	756	PRO	4.7
1	A	790	ILE	4.5
1	A	787	LEU	4.4
1	A	798	SER	4.3
1	A	190	ASP	4.2
1	A	247	SER	4.2
1	A	199	GLU	4.2
3	C	18	PRO	4.2
1	A	802	GLY	4.1
1	A	229	VAL	4.1
3	C	149	GLY	4.1
1	A	220	GLY	4.0
1	A	633	PHE	4.0
3	C	17	PRO	3.9

*Continued on next page...*

*Continued from previous page...*

Mol	Chain	Res	Type	RSRZ
1	A	198	GLU	3.9
1	A	209	PHE	3.9
1	A	908	VAL	3.7
1	A	792	ASP	3.7
1	A	631	PRO	3.5
1	A	250	TYR	3.4
1	A	365	VAL	3.4
1	A	189	THR	3.4
2	B	-2	HIS	3.3
1	A	758	PRO	3.3
1	A	794	LEU	3.2
1	A	364	ALA	3.2
1	A	216	LYS	3.2
1	A	359	ALA	3.2
1	A	239	ILE	3.1
1	A	789	SER	3.1
1	A	228	LYS	3.1
1	A	241	SER	3.0
1	A	361	LEU	3.0
1	A	958	PRO	2.9
1	A	227	ARG	2.9
1	A	162	ILE	2.9
1	A	259	VAL	2.9
1	A	804	ARG	2.9
1	A	791	ALA	2.8
1	A	357	MET	2.8
3	C	1	MET	2.8
1	A	788	LYS	2.8
1	A	635	GLU	2.8
1	A	861	VAL	2.7
1	A	52	ILE	2.7
1	A	230	GLU	2.7
1	A	153	ALA	2.7
1	A	629	SER	2.6
1	A	356	ALA	2.6
1	A	634	LEU	2.5
1	A	639	LYS	2.5
1	A	655	LEU	2.5
1	A	936	LYS	2.5
1	A	13	ASN	2.5
1	A	360	PHE	2.4
1	A	964	GLU	2.4

*Continued on next page...*

*Continued from previous page...*

Mol	Chain	Res	Type	RSRZ
1	A	251	ASN	2.4
1	A	240	GLY	2.4
1	A	911	LYS	2.4
1	A	762	LYS	2.4
1	A	225	THR	2.4
1	A	638	LEU	2.4
1	A	640	THR	2.4
1	A	856	CYS	2.4
1	A	48	LEU	2.3
1	A	630	SER	2.3
1	A	363	GLY	2.3
1	A	152	ALA	2.3
1	A	221	LEU	2.3
1	A	358	SER	2.3
1	A	438	ILE	2.2
1	A	362	GLY	2.2
1	A	210	VAL	2.2
1	A	641	SER	2.2
1	A	336	VAL	2.1
1	A	624	VAL	2.1
1	A	757	PRO	2.1
1	A	355	VAL	2.1
1	A	248	ALA	2.1
1	A	627	TYR	2.1
1	A	763	SER	2.1
1	A	648	LEU	2.1
2	B	-3	HIS	2.1
1	A	625	ASN	2.1
1	A	857	THR	2.1
1	A	366	ALA	2.1
1	A	257	VAL	2.1
1	A	864	GLY	2.0
1	A	862	VAL	2.0
1	A	755	ASN	2.0
3	C	15	LYS	2.0

## 6.2 Non-standard residues in protein, DNA, RNA chains ⓘ

There are no non-standard protein/DNA/RNA residues in this entry.



### 6.3 Carbohydrates [i](#)

There are no carbohydrates in this entry.

### 6.4 Ligands [i](#)

In the following table, the Atoms column lists the number of modelled atoms in the group and the number defined in the chemical component dictionary. The B-factors column lists the minimum, median, 95<sup>th</sup> percentile and maximum values of B factors of atoms in the group. The column labelled 'Q< 0.9' lists the number of atoms with occupancy less than 0.9.

Mol	Type	Chain	Res	Atoms	RSCC	RSR	B-factors( $\text{\AA}^2$ )	Q<0.9
8	SO4	A	1113	5/5	0.80	0.14	148,148,148,148	0
4	MG	A	1101	1/1	0.82	0.16	52,52,52,52	0
8	SO4	A	1112	5/5	0.82	0.23	127,127,127,128	0
8	SO4	B	102	5/5	0.84	0.14	135,135,135,135	0
7	EDO	A	1107	4/4	0.87	0.22	79,80,81,81	0
7	EDO	A	1109	4/4	0.88	0.26	53,54,55,56	0
7	EDO	A	1106	4/4	0.89	0.19	52,57,58,62	0
7	EDO	A	1108	4/4	0.89	0.15	74,74,74,74	0
7	EDO	A	1110	4/4	0.90	0.19	79,79,80,80	0
7	EDO	A	1105	4/4	0.91	0.12	75,75,75,78	0
6	PG0	A	1104	7/8	0.92	0.16	47,53,55,56	0
7	EDO	B	101	4/4	0.92	0.16	57,59,61,63	0
8	SO4	A	1111	5/5	0.92	0.18	122,122,122,122	0
4	MG	A	1102	1/1	0.96	0.09	47,47,47,47	0
5	ATP	A	1103	31/31	0.98	0.11	34,38,41,45	0

### 6.5 Other polymers [i](#)

There are no such residues in this entry.