



Full wwPDB X-ray Structure Validation Report ⓘ

Mar 9, 2018 – 01:39 pm GMT

PDB ID : 3IMY
Title : Structure of TR-beta bound to selective thyromimetic GC-1
Authors : Bleicher, L.; Polikarpov, L.; Aparicio, R.
Deposited on : 2009-08-11
Resolution : 2.55 Å(reported)

This is a Full wwPDB X-ray Structure Validation Report for a publicly released PDB entry.

We welcome your comments at validation@mail.wwpdb.org

A user guide is available at

<https://www.wwpdb.org/validation/2017/XrayValidationReportHelp>

with specific help available everywhere you see the ⓘ symbol.

The following versions of software and data (see [references ⓘ](#)) were used in the production of this report:

MolProbity : 4.02b-467
Mogul : 1.7.3 (157068), CSD as539be (2018)
Xtriage (Phenix) : 1.13
EDS : trunk30967
Percentile statistics : 20171227.v01 (using entries in the PDB archive December 27th 2017)
Refmac : 5.8.0158
CCP4 : 7.0 (Gargrove)
Ideal geometry (proteins) : Engh & Huber (2001)
Ideal geometry (DNA, RNA) : Parkinson et al. (1996)
Validation Pipeline (wwPDB-VP) : trunk30967

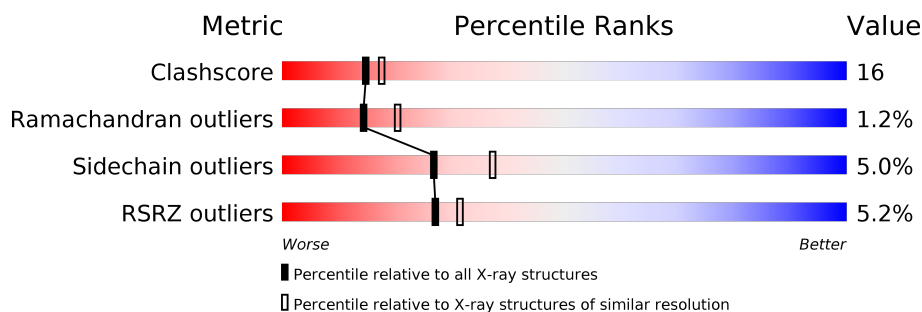
1 Overall quality at a glance

The following experimental techniques were used to determine the structure:

X-RAY DIFFRACTION

The reported resolution of this entry is 2.55 Å.

Percentile scores (ranging between 0-100) for global validation metrics of the entry are shown in the following graphic. The table shows the number of entries on which the scores are based.



Metric	Whole archive (#Entries)	Similar resolution (#Entries, resolution range(Å))
Clashscore	122126	1098 (2.56-2.52)
Ramachandran outliers	120053	1088 (2.56-2.52)
Sidechain outliers	120020	1088 (2.56-2.52)
RSRZ outliers	108989	1043 (2.56-2.52)

The table below summarises the geometric issues observed across the polymeric chains and their fit to the electron density. The red, orange, yellow and green segments on the lower bar indicate the fraction of residues that contain outliers for ≥ 3 , 2, 1 and 0 types of geometric quality criteria. A grey segment represents the fraction of residues that are not modelled. The numeric value for each fraction is indicated below the corresponding segment, with a dot representing fractions $\leq 5\%$. The upper red bar (where present) indicates the fraction of residues that have poor fit to the electron density. The numeric value is given above the bar.

Mol	Chain	Length	Quality of chain
1	A	261	<div> <div>5%</div> <div>62%</div> <div>31%</div> <div>• •</div> </div>

The following table lists non-polymeric compounds, carbohydrate monomers and non-standard residues in protein, DNA, RNA chains that are outliers for geometric or electron-density-fit criteria:

Mol	Type	Chain	Res	Chirality	Geometry	Clashes	Electron density
1	CAS	A	388	X	-	-	-
1	CAS	A	434	X	-	-	-

2 Entry composition [i](#)

There are 3 unique types of molecules in this entry. The entry contains 2088 atoms, of which 0 are hydrogens and 0 are deuteriums.

In the tables below, the ZeroOcc column contains the number of atoms modelled with zero occupancy, the AltConf column contains the number of residues with at least one atom in alternate conformation and the Trace column contains the number of residues modelled with at most 2 atoms.

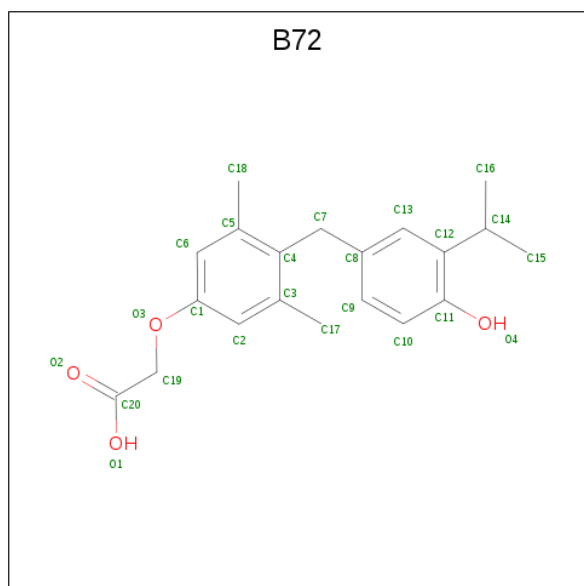
- Molecule 1 is a protein called Thyroid hormone receptor beta.

Mol	Chain	Residues	Atoms						ZeroOcc	AltConf	Trace
			Total	As	C	N	O	S			
1	A	251	2014	3	1290	334	370	17	0	0	0

There is a discrepancy between the modelled and reference sequences:

Chain	Residue	Modelled	Actual	Comment	Reference
A	201	MET	-	INITIATING METHIONINE	UNP P10828

- Molecule 2 is {4-[4-hydroxy-3-(1-methylethyl)benzyl]-3,5-dimethoxy}acetic acid (three-letter code: B72) (formula: C₂₀H₂₄O₄).



Mol	Chain	Residues	Atoms			ZeroOcc	AltConf
			Total	C	O		
2	A	1	24	20	4	0	0

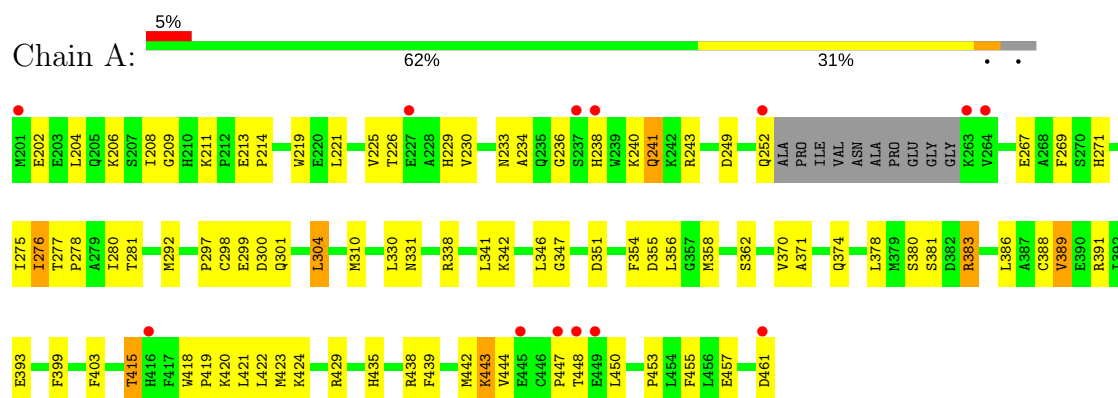
- Molecule 3 is water.

Mol	Chain	Residues	Atoms		ZeroOcc	AltConf
3	A	50	Total	O	0	0
			50	50		

3 Residue-property plots [i](#)

These plots are drawn for all protein, RNA and DNA chains in the entry. The first graphic for a chain summarises the proportions of the various outlier classes displayed in the second graphic. The second graphic shows the sequence view annotated by issues in geometry and electron density. Residues are color-coded according to the number of geometric quality criteria for which they contain at least one outlier: green = 0, yellow = 1, orange = 2 and red = 3 or more. A red dot above a residue indicates a poor fit to the electron density ($RSRZ > 2$). Stretches of 2 or more consecutive residues without any outlier are shown as a green connector. Residues present in the sample, but not in the model, are shown in grey.

- Molecule 1: Thyroid hormone receptor beta



4 Data and refinement statistics

Property	Value	Source
Space group	P 31 2 1	Depositor
Cell constants a, b, c, α , β , γ	69.00Å 69.00Å 130.86Å 90.00° 90.00° 120.00°	Depositor
Resolution (Å)	35.23 – 2.55 35.23 – 2.55	Depositor EDS
% Data completeness (in resolution range)	97.0 (35.23-2.55) 91.2 (35.23-2.55)	Depositor EDS
R_{merge}	0.07	Depositor
R_{sym}	0.07	Depositor
$\langle I/\sigma(I) \rangle$ ¹	2.13 (at 2.54Å)	Xtriage
Refinement program	PHENIX	Depositor
R, R_{free}	0.225 , 0.271 0.231 , (Not available)	Depositor DCC
R_{free} test set	No test flags present.	wwPDB-VP
Wilson B-factor (Å ²)	50.6	Xtriage
Anisotropy	0.094	Xtriage
Bulk solvent k_{sol} (e/Å ³), B_{sol} (Å ²)	0.29 , 47.4	EDS
L-test for twinning ²	$\langle L \rangle = 0.48$, $\langle L^2 \rangle = 0.32$	Xtriage
Estimated twinning fraction	0.033 for -h,-k,l	Xtriage
F_o, F_c correlation	0.93	EDS
Total number of atoms	2088	wwPDB-VP
Average B, all atoms (Å ²)	55.0	wwPDB-VP

Xtriage's analysis on translational NCS is as follows: *The largest off-origin peak in the Patterson function is 5.34% of the height of the origin peak. No significant pseudotranslation is detected.*

¹Intensities estimated from amplitudes.

²Theoretical values of $\langle |L| \rangle$, $\langle L^2 \rangle$ for acentric reflections are 0.5, 0.333 respectively for untwinned datasets, and 0.375, 0.2 for perfectly twinned datasets.

5 Model quality [i](#)

5.1 Standard geometry [i](#)

Bond lengths and bond angles in the following residue types are not validated in this section: CAS, B72

The Z score for a bond length (or angle) is the number of standard deviations the observed value is removed from the expected value. A bond length (or angle) with $|Z| > 5$ is considered an outlier worth inspection. RMSZ is the root-mean-square of all Z scores of the bond lengths (or angles).

Mol	Chain	Bond lengths		Bond angles	
		RMSZ	$\# Z > 5$	RMSZ	$\# Z > 5$
1	A	0.38	0/2028	0.54	0/2733

Chiral center outliers are detected by calculating the chiral volume of a chiral center and verifying if the center is modelled as a planar moiety or with the opposite hand. A planarity outlier is detected by checking planarity of atoms in a peptide group, atoms in a mainchain group or atoms of a sidechain that are expected to be planar.

Mol	Chain	#Chirality outliers	#Planarity outliers
1	A	2	0

There are no bond length outliers.

There are no bond angle outliers.

All (2) chirality outliers are listed below:

Mol	Chain	Res	Type	Atom
1	A	388	CAS	CA
1	A	434	CAS	CA

There are no planarity outliers.

5.2 Too-close contacts [i](#)

In the following table, the Non-H and H(model) columns list the number of non-hydrogen atoms and hydrogen atoms in the chain respectively. The H(added) column lists the number of hydrogen atoms added and optimized by MolProbity. The Clashes column lists the number of clashes within the asymmetric unit, whereas Symm-Clashes lists symmetry related clashes.

Mol	Chain	Non-H	H(model)	H(added)	Clashes	Symm-Clashes
1	A	2014	0	1998	65	0

Continued on next page...

Continued from previous page...

Mol	Chain	Non-H	H(model)	H(added)	Clashes	Symm-Clashes
2	A	24	0	23	2	0
3	A	50	0	0	0	0
All	All	2088	0	2021	65	0

The all-atom clashscore is defined as the number of clashes found per 1000 atoms (including hydrogen atoms). The all-atom clashscore for this structure is 16.

All (65) close contacts within the same asymmetric unit are listed below, sorted by their clash magnitude.

Atom-1	Atom-2	Interatomic distance (Å)	Clash overlap (Å)
1:A:447:PRO:HD2	1:A:450:LEU:HD23	1.39	1.00
1:A:418:TRP:HB3	1:A:419:PRO:HD3	1.59	0.84
1:A:453:PRO:O	1:A:457:GLU:HG2	1.82	0.78
1:A:331:ASN:H	2:A:462:B72:H119	1.50	0.77
1:A:439:PHE:CE2	1:A:455:PHE:HE2	2.07	0.72
1:A:299:GLU:CD	1:A:299:GLU:H	1.95	0.71
1:A:267:GLU:O	1:A:271:HIS:HD2	1.76	0.69
1:A:355:ASP:HA	1:A:358:MET:CE	2.24	0.68
1:A:341:LEU:HG	1:A:346:LEU:HD12	1.76	0.67
1:A:277:THR:O	1:A:281:THR:HG23	1.95	0.66
1:A:269:PHE:HE2	1:A:450:LEU:HB3	1.60	0.65
1:A:443:LYS:NZ	1:A:448:THR:HG22	2.13	0.63
1:A:249:ASP:HA	1:A:252:GLN:NE2	2.17	0.58
1:A:443:LYS:HZ1	1:A:448:THR:HG22	1.69	0.58
1:A:370:VAL:O	1:A:374:GLN:HG3	2.04	0.58
1:A:241:GLN:CD	1:A:241:GLN:H	2.07	0.57
1:A:276:ILE:O	1:A:280:ILE:HG13	2.04	0.56
1:A:355:ASP:HA	1:A:358:MET:HE2	1.85	0.56
1:A:341:LEU:CG	1:A:346:LEU:HD12	2.35	0.56
1:A:204:LEU:O	1:A:208:ILE:HG13	2.07	0.55
1:A:439:PHE:HE2	1:A:455:PHE:HE2	1.50	0.54
1:A:338:ARG:HA	1:A:354:PHE:CE1	2.43	0.54
1:A:418:TRP:HB3	1:A:419:PRO:CD	2.36	0.54
1:A:238:HIS:CA	1:A:241:GLN:HE22	2.20	0.54
1:A:442:MET:C	1:A:444:VAL:H	2.12	0.53
1:A:275:ILE:O	1:A:278:PRO:HG2	2.08	0.53
1:A:221:LEU:O	1:A:225:VAL:HG23	2.09	0.53
1:A:342:LYS:HG3	1:A:347:GLY:HA2	1.89	0.53
1:A:418:TRP:CZ2	1:A:422:LEU:HD21	2.43	0.52
1:A:225:VAL:HG12	1:A:371:ALA:HB1	1.93	0.51
1:A:447:PRO:HD2	1:A:450:LEU:CD2	2.28	0.51

Continued on next page...

Continued from previous page...

Atom-1	Atom-2	Interatomic distance (Å)	Clash overlap (Å)
1:A:388:CAS:CE1	1:A:391:ARG:HH11	2.24	0.50
1:A:297:PRO:O	1:A:301:GLN:HG3	2.11	0.50
1:A:383:ARG:NH2	1:A:429:ARG:HH21	2.10	0.50
1:A:381:SER:OG	1:A:393:GLU:HG3	2.11	0.50
1:A:356:LEU:HD11	1:A:424:LYS:HG3	1.94	0.49
1:A:236:GLY:C	1:A:238:HIS:H	2.16	0.48
1:A:380:SER:OG	1:A:429:ARG:NH2	2.45	0.48
1:A:225:VAL:HG21	1:A:399:PHE:HE2	1.79	0.48
1:A:439:PHE:CE2	1:A:455:PHE:CE2	2.95	0.47
1:A:226:THR:O	1:A:230:VAL:HG23	2.13	0.47
1:A:299:GLU:CD	1:A:299:GLU:N	2.64	0.47
1:A:206:LYS:O	1:A:209:GLY:N	2.48	0.47
1:A:304:LEU:HG	1:A:378:LEU:O	2.15	0.47
1:A:415:THR:O	1:A:420:LYS:HE3	2.16	0.46
1:A:211:LYS:HA	1:A:211:LYS:HE2	1.97	0.46
1:A:338:ARG:HD3	1:A:351:ASP:OD2	2.17	0.45
1:A:202:GLU:HA	1:A:202:GLU:OE1	2.17	0.44
1:A:214:PRO:HB2	1:A:219:TRP:CE2	2.52	0.44
1:A:213:GLU:HB3	1:A:214:PRO:CD	2.48	0.44
1:A:229:HIS:O	1:A:233:ASN:HB2	2.19	0.43
1:A:438:ARG:HD2	1:A:438:ARG:HA	1.79	0.43
1:A:240:LYS:O	1:A:243:ARG:HG2	2.19	0.42
1:A:420:LYS:HA	1:A:423:MET:HE2	2.01	0.42
1:A:276:ILE:HG12	2:A:462:B72:H217	2.01	0.42
1:A:213:GLU:HB3	1:A:214:PRO:HD2	2.02	0.42
1:A:300:ASP:OD2	1:A:388:CAS:N	2.52	0.42
1:A:442:MET:C	1:A:444:VAL:N	2.72	0.42
1:A:238:HIS:HB3	1:A:241:GLN:NE2	2.33	0.42
1:A:355:ASP:HA	1:A:358:MET:HE3	1.99	0.42
1:A:221:LEU:HD11	1:A:292:MET:CE	2.50	0.41
1:A:221:LEU:HD11	1:A:292:MET:HE1	2.01	0.41
1:A:388:CAS:O	1:A:389:VAL:C	2.59	0.41
1:A:310:MET:HG2	1:A:435:HIS:CG	2.56	0.41
1:A:304:LEU:HD13	1:A:386:LEU:HD21	2.03	0.40

There are no symmetry-related clashes.

5.3 Torsion angles [i](#)

5.3.1 Protein backbone [i](#)

In the following table, the Percentiles column shows the percent Ramachandran outliers of the chain as a percentile score with respect to all X-ray entries followed by that with respect to entries of similar resolution.

The Analysed column shows the number of residues for which the backbone conformation was analysed, and the total number of residues.

Mol	Chain	Analysed	Favoured	Allowed	Outliers	Percentiles
1	A	244/261 (94%)	222 (91%)	19 (8%)	3 (1%)	14 20

All (3) Ramachandran outliers are listed below:

Mol	Chain	Res	Type
1	A	234	ALA
1	A	443	LYS
1	A	389	VAL

5.3.2 Protein sidechains [i](#)

In the following table, the Percentiles column shows the percent sidechain outliers of the chain as a percentile score with respect to all X-ray entries followed by that with respect to entries of similar resolution.

The Analysed column shows the number of residues for which the sidechain conformation was analysed, and the total number of residues.

Mol	Chain	Analysed	Rotameric	Outliers	Percentiles
1	A	220/226 (97%)	209 (95%)	11 (5%)	27 37

All (11) residues with a non-rotameric sidechain are listed below:

Mol	Chain	Res	Type
1	A	241	GLN
1	A	276	ILE
1	A	298	CYS
1	A	304	LEU
1	A	330	LEU
1	A	362	SER
1	A	383	ARG
1	A	403	PHE

Continued on next page...

Continued from previous page...

Mol	Chain	Res	Type
1	A	415	THR
1	A	421	LEU
1	A	461	ASP

Some sidechains can be flipped to improve hydrogen bonding and reduce clashes. All (3) such sidechains are listed below:

Mol	Chain	Res	Type
1	A	241	GLN
1	A	271	HIS
1	A	301	GLN

5.3.3 RNA ⓘ

There are no RNA molecules in this entry.

5.4 Non-standard residues in protein, DNA, RNA chains ⓘ

3 non-standard protein/DNA/RNA residues are modelled in this entry.

In the following table, the Counts columns list the number of bonds (or angles) for which Mogul statistics could be retrieved, the number of bonds (or angles) that are observed in the model and the number of bonds (or angles) that are defined in the Chemical Component Dictionary. The Link column lists molecule types, if any, to which the group is linked. The Z score for a bond length (or angle) is the number of standard deviations the observed value is removed from the expected value. A bond length (or angle) with $|Z| > 2$ is considered an outlier worth inspection. RMSZ is the root-mean-square of all Z scores of the bond lengths (or angles).

Mol	Type	Chain	Res	Link	Bond lengths			Bond angles		
					Counts	RMSZ	$\# Z > 2$	Counts	RMSZ	$\# Z > 2$
1	CAS	A	294	1	6,8,9	0.76	0	2,9,11	1.29	0
1	CAS	A	388	1	6,8,9	0.97	0	2,9,11	1.48	1 (50%)
1	CAS	A	434	1	6,8,9	1.47	2 (33%)	2,9,11	2.13	1 (50%)

In the following table, the Chirals column lists the number of chiral outliers, the number of chiral centers analysed, the number of these observed in the model and the number defined in the Chemical Component Dictionary. Similar counts are reported in the Torsion and Rings columns. '-' means no outliers of that kind were identified.

Mol	Type	Chain	Res	Link	Chirals	Torsions	Rings
1	CAS	A	294	1	-	0/0/7/9	0/0/0/0

Continued on next page...

Continued from previous page...

Mol	Type	Chain	Res	Link	Chirals	Torsions	Rings
1	CAS	A	388	1	1/1/2/3	0/0/7/9	0/0/0/0
1	CAS	A	434	1	1/1/2/3	0/0/7/9	0/0/0/0

All (2) bond length outliers are listed below:

Mol	Chain	Res	Type	Atoms	Z	Observed(Å)	Ideal(Å)
1	A	434	CAS	CA-N	-2.25	1.40	1.47
1	A	434	CAS	CB-CA	-2.15	1.48	1.53

All (2) bond angle outliers are listed below:

Mol	Chain	Res	Type	Atoms	Z	Observed(°)	Ideal(°)
1	A	434	CAS	CA-CB-SG	-3.00	101.11	114.46
1	A	388	CAS	O-C-CA	-2.09	119.22	124.96

All (2) chirality outliers are listed below:

Mol	Chain	Res	Type	Atom
1	A	434	CAS	CA
1	A	388	CAS	CA

There are no torsion outliers.

There are no ring outliers.

1 monomer is involved in 3 short contacts:

Mol	Chain	Res	Type	Clashes	Symm-Clashes
1	A	388	CAS	3	0

5.5 Carbohydrates [i](#)

There are no carbohydrates in this entry.

5.6 Ligand geometry [i](#)

1 ligand is modelled in this entry.

In the following table, the Counts columns list the number of bonds (or angles) for which Mogul statistics could be retrieved, the number of bonds (or angles) that are observed in the model and the number of bonds (or angles) that are defined in the Chemical Component Dictionary. The Link column lists molecule types, if any, to which the group is linked. The Z score for a bond

length (or angle) is the number of standard deviations the observed value is removed from the expected value. A bond length (or angle) with $|Z| > 2$ is considered an outlier worth inspection. RMSZ is the root-mean-square of all Z scores of the bond lengths (or angles).

Mol	Type	Chain	Res	Link	Bond lengths			Bond angles		
					Counts	RMSZ	$\# Z > 2$	Counts	RMSZ	$\# Z > 2$
2	B72	A	462	-	22,25,25	2.75	9 (40%)	31,35,35	1.38	4 (12%)

In the following table, the Chirals column lists the number of chiral outliers, the number of chiral centers analysed, the number of these observed in the model and the number defined in the Chemical Component Dictionary. Similar counts are reported in the Torsion and Rings columns. '-' means no outliers of that kind were identified.

Mol	Type	Chain	Res	Link	Chirals	Torsions	Rings
2	B72	A	462	-	-	0/11/13/13	0/2/2/2

All (9) bond length outliers are listed below:

Mol	Chain	Res	Type	Atoms	Z	Observed(Å)	Ideal(Å)
2	A	462	B72	O3-C1	2.03	1.42	1.37
2	A	462	B72	C13-C12	2.42	1.43	1.39
2	A	462	B72	C11-C12	2.56	1.43	1.40
2	A	462	B72	C2-C1	3.12	1.44	1.38
2	A	462	B72	C6-C1	3.47	1.45	1.38
2	A	462	B72	C10-C11	4.02	1.46	1.39
2	A	462	B72	C9-C8	4.23	1.47	1.38
2	A	462	B72	C6-C5	4.27	1.46	1.39
2	A	462	B72	C3-C4	7.66	1.52	1.40

All (4) bond angle outliers are listed below:

Mol	Chain	Res	Type	Atoms	Z	Observed(°)	Ideal(°)
2	A	462	B72	C12-C13-C8	-2.93	119.11	121.98
2	A	462	B72	C16-C14-C15	2.10	115.20	110.31
2	A	462	B72	C3-C4-C5	3.17	122.82	119.43
2	A	462	B72	C13-C12-C11	3.79	120.02	116.90

There are no chirality outliers.

There are no torsion outliers.

There are no ring outliers.

1 monomer is involved in 2 short contacts:

Mol	Chain	Res	Type	Clashes	Symm-Clashes
2	A	462	B72	2	0

5.7 Other polymers [i](#)

There are no such residues in this entry.

5.8 Polymer linkage issues [i](#)

There are no chain breaks in this entry.

6 Fit of model and data [i](#)

6.1 Protein, DNA and RNA chains [i](#)

In the following table, the column labelled ‘#RSRZ > 2’ contains the number (and percentage) of RSRZ outliers, followed by percent RSRZ outliers for the chain as percentile scores relative to all X-ray entries and entries of similar resolution. The OWAB column contains the minimum, median, 95th percentile and maximum values of the occupancy-weighted average B-factor per residue. The column labelled ‘Q < 0.9’ lists the number of (and percentage) of residues with an average occupancy less than 0.9.

Mol	Chain	Analysed	<RSRZ>	#RSRZ > 2		OWAB(Å ²)	Q < 0.9
1	A	248/261 (95%)	0.18	13 (5%)	27 31	36, 53, 79, 95	7 (2%)

All (13) RSRZ outliers are listed below:

Mol	Chain	Res	Type	RSRZ
1	A	237	SER	3.7
1	A	201	MET	3.2
1	A	449	GLU	3.1
1	A	448	THR	3.1
1	A	461	ASP	3.0
1	A	447	PRO	2.6
1	A	416	HIS	2.5
1	A	238	HIS	2.4
1	A	264	VAL	2.3
1	A	227	GLU	2.3
1	A	445	GLU	2.3
1	A	252	GLN	2.2
1	A	263	LYS	2.1

6.2 Non-standard residues in protein, DNA, RNA chains [i](#)

In the following table, the Atoms column lists the number of modelled atoms in the group and the number defined in the chemical component dictionary. The B-factors column lists the minimum, median, 95th percentile and maximum values of B factors of atoms in the group. The column labelled ‘Q < 0.9’ lists the number of atoms with occupancy less than 0.9.

Mol	Type	Chain	Res	Atoms	RSCC	RSR	B-factors(Å ²)	Q < 0.9
1	CAS	A	434	9/10	0.75	0.31	20,43,62,116	0
1	CAS	A	388	9/10	0.95	0.18	59,61,77,91	0
1	CAS	A	294	9/10	0.98	0.11	54,59,63,74	0

6.3 Carbohydrates [i](#)

There are no carbohydrates in this entry.

6.4 Ligands [i](#)

In the following table, the Atoms column lists the number of modelled atoms in the group and the number defined in the chemical component dictionary. The B-factors column lists the minimum, median, 95th percentile and maximum values of B factors of atoms in the group. The column labelled 'Q< 0.9' lists the number of atoms with occupancy less than 0.9.

Mol	Type	Chain	Res	Atoms	RSCC	RSR	B-factors(\AA^2)	Q<0.9
2	B72	A	462	24/24	0.91	0.23	29,44,50,56	0

6.5 Other polymers [i](#)

There are no such residues in this entry.