



# wwPDB X-ray Structure Validation Summary Report ⓘ

Mar 8, 2018 – 05:12 pm GMT

PDB ID : 2JB3  
Title : The structure of L-amino acid oxidase from *Rhodococcus opacus* in complex with o-aminobenzoate  
Authors : Faust, A.; Niefind, K.; hummel, W.; Schomburg, D.  
Deposited on : 2006-12-01  
Resolution : 1.85 Å(reported)

This is a wwPDB X-ray Structure Validation Summary Report for a publicly released PDB entry.

We welcome your comments at [validation@mail.wwpdb.org](mailto:validation@mail.wwpdb.org)

A user guide is available at

<https://www.wwpdb.org/validation/2017/XrayValidationReportHelp>

with specific help available everywhere you see the ⓘ symbol.

---

The following versions of software and data (see [references ⓘ](#)) were used in the production of this report:

MolProbity : 4.02b-467  
Mogul : 1.7.3 (157068), CSD as539be (2018)  
Xtriage (Phenix) : 1.13  
EDS : trunk30967  
Percentile statistics : 20171227.v01 (using entries in the PDB archive December 27th 2017)  
Refmac : 5.8.0158  
CCP4 : 7.0 (Gargrove)  
Ideal geometry (proteins) : Engh & Huber (2001)  
Ideal geometry (DNA, RNA) : Parkinson et al. (1996)  
Validation Pipeline (wwPDB-VP) : trunk30967

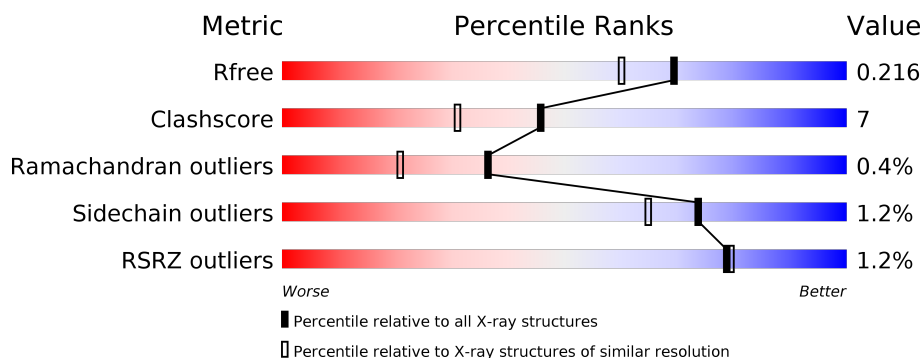
# 1 Overall quality at a glance

The following experimental techniques were used to determine the structure:

## *X-RAY DIFFRACTION*

The reported resolution of this entry is 1.85 Å.

Percentile scores (ranging between 0-100) for global validation metrics of the entry are shown in the following graphic. The table shows the number of entries on which the scores are based.

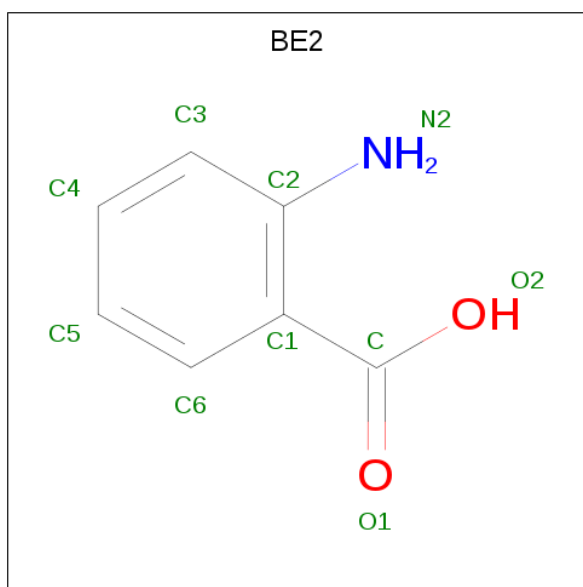


Metric	Whole archive (#Entries)	Similar resolution (#Entries, resolution range(Å))
$R_{free}$	111664	2111 (1.86-1.86)
Clashscore	122126	2258 (1.86-1.86)
Ramachandran outliers	120053	2234 (1.86-1.86)
Sidechain outliers	120020	2234 (1.86-1.86)
RSRZ outliers	108989	2075 (1.86-1.86)

The table below summarises the geometric issues observed across the polymeric chains and their fit to the electron density. The red, orange, yellow and green segments on the lower bar indicate the fraction of residues that contain outliers for  $\geq 3$ , 2, 1 and 0 types of geometric quality criteria. A grey segment represents the fraction of residues that are not modelled. The numeric value for each fraction is indicated below the corresponding segment, with a dot representing fractions  $\leq 5\%$ . The upper red bar (where present) indicates the fraction of residues that have poor fit to the electron density. The numeric value is given above the bar.

Mol	Chain	Length	Quality of chain
1	A	489	<div> <div style="width: 100%; height: 10px; position: relative;"> <div style="position: absolute; top: -10px; left: 0;">%</div> <div style="position: absolute; top: 10px; left: 0;">86%</div> <div style="position: absolute; top: 10px; right: 0;">11%</div> <div style="position: absolute; top: 10px; right: 0;">•</div> </div> </div>
1	B	489	<div> <div style="width: 100%; height: 10px; position: relative;"> <div style="position: absolute; top: -10px; left: 0;">%</div> <div style="position: absolute; top: 10px; left: 0;">82%</div> <div style="position: absolute; top: 10px; right: 0;">14%</div> <div style="position: absolute; top: 10px; right: 0;">••</div> </div> </div>





Mol	Chain	Residues	Atoms				ZeroOcc	AltConf
3	A	1	Total	C	N	O	0	0
			10	7	1	2		
3	B	1	Total	C	N	O	0	0
			10	7	1	2		

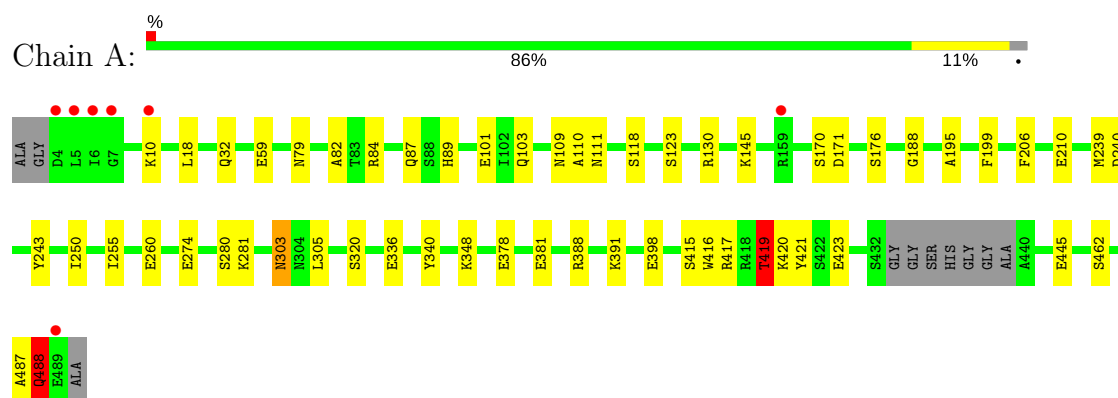
- Molecule 4 is water.

Mol	Chain	Residues	Atoms		ZeroOcc	AltConf
4	A	481	Total	O	0	0
			481	481		
4	B	504	Total	O	0	0
			504	504		

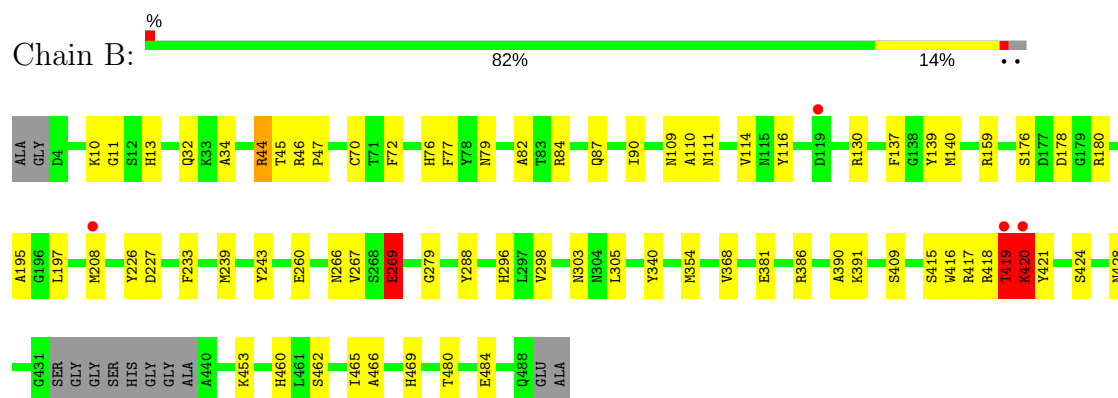
### 3 Residue-property plots

These plots are drawn for all protein, RNA and DNA chains in the entry. The first graphic for a chain summarises the proportions of the various outlier classes displayed in the second graphic. The second graphic shows the sequence view annotated by issues in geometry and electron density. Residues are color-coded according to the number of geometric quality criteria for which they contain at least one outlier: green = 0, yellow = 1, orange = 2 and red = 3 or more. A red dot above a residue indicates a poor fit to the electron density ( $RSRZ > 2$ ). Stretches of 2 or more consecutive residues without any outlier are shown as a green connector. Residues present in the sample, but not in the model, are shown in grey.

#### • Molecule 1: L-AMINO ACID OXIDASE



#### • Molecule 1: L-AMINO ACID OXIDASE



## 4 Data and refinement statistics

Property	Value	Source
Space group	P 21 21 21	Depositor
Cell constants a, b, c, $\alpha$ , $\beta$ , $\gamma$	65.65Å 109.68Å 134.37Å 90.00° 90.00° 90.00°	Depositor
Resolution (Å)	19.77 – 1.85 19.77 – 1.85	Depositor EDS
% Data completeness (in resolution range)	99.2 (19.77-1.85) 99.1 (19.77-1.85)	Depositor EDS
$R_{merge}$	0.15	Depositor
$R_{sym}$	(Not available)	Depositor
$\langle I/\sigma(I) \rangle$ <sup>1</sup>	3.21 (at 1.85Å)	Xtriage
Refinement program	REFMAC 5.2.0019	Depositor
R, $R_{free}$	0.151 , 0.214 0.156 , 0.216	Depositor DCC
$R_{free}$ test set	4145 reflections (4.99%)	wwPDB-VP
Wilson B-factor (Å <sup>2</sup> )	16.5	Xtriage
Anisotropy	0.404	Xtriage
Bulk solvent $k_{sol}$ (e/Å <sup>3</sup> ), $B_{sol}$ (Å <sup>2</sup> )	0.33 , 48.2	EDS
L-test for twinning <sup>2</sup>	$\langle  L  \rangle = 0.47$ , $\langle L^2 \rangle = 0.30$	Xtriage
Estimated twinning fraction	No twinning to report.	Xtriage
$F_o, F_c$ correlation	0.96	EDS
Total number of atoms	8511	wwPDB-VP
Average B, all atoms (Å <sup>2</sup> )	19.0	wwPDB-VP

Xtriage's analysis on translational NCS is as follows: *The largest off-origin peak in the Patterson function is 4.04% of the height of the origin peak. No significant pseudotranslation is detected.*

<sup>1</sup>Intensities estimated from amplitudes.

<sup>2</sup>Theoretical values of  $\langle |L| \rangle$ ,  $\langle L^2 \rangle$  for acentric reflections are 0.5, 0.333 respectively for untwinned datasets, and 0.375, 0.2 for perfectly twinned datasets.

## 5 Model quality

### 5.1 Standard geometry

Bond lengths and bond angles in the following residue types are not validated in this section: BE2, FAD

The Z score for a bond length (or angle) is the number of standard deviations the observed value is removed from the expected value. A bond length (or angle) with  $|Z| > 5$  is considered an outlier worth inspection. RMSZ is the root-mean-square of all Z scores of the bond lengths (or angles).

Mol	Chain	Bond lengths		Bond angles	
		RMSZ	# Z  >5	RMSZ	# Z  >5
1	A	0.64	0/3811	0.69	1/5146 (0.0%)
1	B	0.65	0/3770	0.72	1/5086 (0.0%)
All	All	0.65	0/7581	0.70	2/10232 (0.0%)

Chiral center outliers are detected by calculating the chiral volume of a chiral center and verifying if the center is modelled as a planar moiety or with the opposite hand. A planarity outlier is detected by checking planarity of atoms in a peptide group, atoms in a mainchain group or atoms of a sidechain that are expected to be planar.

Mol	Chain	#Chirality outliers	#Planarity outliers
1	A	0	17
1	B	0	20
All	All	0	37

There are no bond length outliers.

All (2) bond angle outliers are listed below:

Mol	Chain	Res	Type	Atoms	Z	Observed(°)	Ideal(°)
1	A	388	ARG	NE-CZ-NH2	-5.79	117.41	120.30
1	B	419	THR	CB-CA-C	5.04	125.21	111.60

There are no chirality outliers.

5 of 37 planarity outliers are listed below:

Mol	Chain	Res	Type	Group
1	A	101	GLU	Sidechain
1	A	199	PHE	Sidechain
1	A	206	PHE	Sidechain
1	A	210	GLU	Mainchain

*Continued on next page...*

*Continued from previous page...*

Mol	Chain	Res	Type	Group
1	A	59	GLU	Sidechain

## 5.2 Too-close contacts ⓘ

In the following table, the Non-H and H(model) columns list the number of non-hydrogen atoms and hydrogen atoms in the chain respectively. The H(added) column lists the number of hydrogen atoms added and optimized by MolProbity. The Clashes column lists the number of clashes within the asymmetric unit, whereas Symm-Clashes lists symmetry related clashes.

Mol	Chain	Non-H	H(model)	H(added)	Clashes	Symm-Clashes
1	A	3707	0	3547	37	0
1	B	3693	0	3533	75	0
2	A	53	0	31	1	0
2	B	53	0	31	1	0
3	A	10	0	6	1	0
3	B	10	0	6	1	0
4	A	481	0	0	8	1
4	B	504	0	0	15	1
All	All	8511	0	7154	102	1

The all-atom clashscore is defined as the number of clashes found per 1000 atoms (including hydrogen atoms). The all-atom clashscore for this structure is 7.

The worst 5 of 102 close contacts within the same asymmetric unit are listed below, sorted by their clash magnitude.

Atom-1	Atom-2	Interatomic distance (Å)	Clash overlap (Å)
1:B:420:LYS:HG3	4:B:2056:HOH:O	1.40	1.18
1:B:419:THR:HG23	1:B:420:LYS:CE	1.77	1.14
1:B:420:LYS:O	1:B:420:LYS:HG2	1.51	1.08
1:B:420:LYS:CG	4:B:2056:HOH:O	1.98	1.00
1:B:420:LYS:HB3	4:B:2437:HOH:O	1.62	0.99

All (1) symmetry-related close contacts are listed below. The label for Atom-2 includes the symmetry operator and encoded unit-cell translations to be applied.

Atom-1	Atom-2	Interatomic distance (Å)	Clash overlap (Å)
4:A:2297:HOH:O	4:B:2235:HOH:O[3_645]	2.16	0.04



## 5.3 Torsion angles

### 5.3.1 Protein backbone

In the following table, the Percentiles column shows the percent Ramachandran outliers of the chain as a percentile score with respect to all X-ray entries followed by that with respect to entries of similar resolution.

The Analysed column shows the number of residues for which the backbone conformation was analysed, and the total number of residues.

Mol	Chain	Analysed	Favoured	Allowed	Outliers	Percentiles	
1	A	480/489 (98%)	466 (97%)	12 (2%)	2 (0%)	36	21
1	B	469/489 (96%)	454 (97%)	13 (3%)	2 (0%)	36	21
All	All	949/978 (97%)	920 (97%)	25 (3%)	4 (0%)	36	21

All (4) Ramachandran outliers are listed below:

Mol	Chain	Res	Type
1	A	488	GLN
1	B	420	LYS
1	A	176	SER
1	B	424	SER

### 5.3.2 Protein sidechains

In the following table, the Percentiles column shows the percent sidechain outliers of the chain as a percentile score with respect to all X-ray entries followed by that with respect to entries of similar resolution.

The Analysed column shows the number of residues for which the sidechain conformation was analysed, and the total number of residues.

Mol	Chain	Analysed	Rotameric	Outliers	Percentiles	
1	A	392/390 (100%)	386 (98%)	6 (2%)	67	56
1	B	384/390 (98%)	381 (99%)	3 (1%)	83	78
All	All	776/780 (100%)	767 (99%)	9 (1%)	74	65

5 of 9 residues with a non-rotameric sidechain are listed below:

Mol	Chain	Res	Type
1	A	419	THR
1	B	428	ASN

*Continued on next page...*

*Continued from previous page...*

Mol	Chain	Res	Type
1	B	269	GLU
1	A	303	ASN
1	A	488	GLN

Some sidechains can be flipped to improve hydrogen bonding and reduce clashes. 5 of 29 such sidechains are listed below:

Mol	Chain	Res	Type
1	B	13	HIS
1	B	87	GLN
1	B	469	HIS
1	B	76	HIS
1	B	111	ASN

### 5.3.3 RNA [i](#)

There are no RNA molecules in this entry.

## 5.4 Non-standard residues in protein, DNA, RNA chains [i](#)

There are no non-standard protein/DNA/RNA residues in this entry.

## 5.5 Carbohydrates [i](#)

There are no carbohydrates in this entry.

## 5.6 Ligand geometry [i](#)

4 ligands are modelled in this entry.

In the following table, the Counts columns list the number of bonds (or angles) for which Mogul statistics could be retrieved, the number of bonds (or angles) that are observed in the model and the number of bonds (or angles) that are defined in the Chemical Component Dictionary. The Link column lists molecule types, if any, to which the group is linked. The Z score for a bond length (or angle) is the number of standard deviations the observed value is removed from the expected value. A bond length (or angle) with  $|Z| > 2$  is considered an outlier worth inspection. RMSZ is the root-mean-square of all Z scores of the bond lengths (or angles).

Mol	Type	Chain	Res	Link	Bond lengths			Bond angles		
					Counts	RMSZ	$\# Z  > 2$	Counts	RMSZ	$\# Z  > 2$
2	FAD	A	1489	-	51,58,58	1.33	7 (13%)	57,89,89	1.89	7 (12%)

Mol	Type	Chain	Res	Link	Bond lengths			Bond angles		
					Counts	RMSZ	# Z  > 2	Counts	RMSZ	# Z  > 2
3	BE2	A	1490	-	7,10,10	1.62	1 (14%)	9,13,13	1.13	0
2	FAD	B	1489	-	51,58,58	1.35	5 (9%)	57,89,89	2.40	12 (21%)
3	BE2	B	1490	-	7,10,10	1.49	1 (14%)	9,13,13	1.46	2 (22%)

In the following table, the Chirals column lists the number of chiral outliers, the number of chiral centers analysed, the number of these observed in the model and the number defined in the Chemical Component Dictionary. Similar counts are reported in the Torsion and Rings columns. '-' means no outliers of that kind were identified.

Mol	Type	Chain	Res	Link	Chirals	Torsions	Rings
2	FAD	A	1489	-	-	0/28/50/50	0/6/6/6
3	BE2	A	1490	-	-	0/0/4/4	0/1/1/1
2	FAD	B	1489	-	-	0/28/50/50	0/6/6/6
3	BE2	B	1490	-	-	0/0/4/4	0/1/1/1

The worst 5 of 14 bond length outliers are listed below:

Mol	Chain	Res	Type	Atoms	Z	Observed(Å)	Ideal(Å)
2	A	1489	FAD	C6-C5X	-2.15	1.38	1.41
2	B	1489	FAD	O4'-C4'	-2.14	1.38	1.43
2	A	1489	FAD	C2A-N1A	2.27	1.38	1.33
2	A	1489	FAD	C4-N3	2.69	1.37	1.33
2	A	1489	FAD	C10-N1	2.76	1.36	1.33

The worst 5 of 21 bond angle outliers are listed below:

Mol	Chain	Res	Type	Atoms	Z	Observed(°)	Ideal(°)
2	B	1489	FAD	N3A-C2A-N1A	-11.33	119.17	128.86
2	A	1489	FAD	N3A-C2A-N1A	-9.20	120.99	128.86
2	B	1489	FAD	C4X-C4-N3	-3.60	118.35	123.47
2	A	1489	FAD	C4X-C4-N3	-2.90	119.35	123.47
2	A	1489	FAD	C4B-O4B-C1B	-2.75	106.97	109.83

There are no chirality outliers.

There are no torsion outliers.

There are no ring outliers.

4 monomers are involved in 4 short contacts:

Mol	Chain	Res	Type	Clashes	Symm-Clashes
2	A	1489	FAD	1	0

*Continued on next page...*

*Continued from previous page...*

Mol	Chain	Res	Type	Clashes	Symm-Clashes
3	A	1490	BE2	1	0
2	B	1489	FAD	1	0
3	B	1490	BE2	1	0

## 5.7 Other polymers [i](#)

There are no such residues in this entry.

## 5.8 Polymer linkage issues [i](#)

There are no chain breaks in this entry.

## 6 Fit of model and data [i](#)

### 6.1 Protein, DNA and RNA chains [i](#)

In the following table, the column labelled ‘#RSRZ> 2’ contains the number (and percentage) of RSRZ outliers, followed by percent RSRZ outliers for the chain as percentile scores relative to all X-ray entries and entries of similar resolution. The OWAB column contains the minimum, median, 95<sup>th</sup> percentile and maximum values of the occupancy-weighted average B-factor per residue. The column labelled ‘Q< 0.9’ lists the number of (and percentage) of residues with an average occupancy less than 0.9.

Mol	Chain	Analysed	<RSRZ>	#RSRZ>2	OWAB(Å <sup>2</sup> )	Q<0.9
1	A	479/489 (97%)	-0.38	7 (1%) 73 74	10, 17, 28, 54	0
1	B	477/489 (97%)	-0.42	4 (0%) 86 87	10, 17, 28, 38	0
All	All	956/978 (97%)	-0.40	11 (1%) 79 79	10, 17, 28, 54	0

The worst 5 of 11 RSRZ outliers are listed below:

Mol	Chain	Res	Type	RSRZ
1	A	489	GLU	4.6
1	A	4	ASP	4.0
1	A	5	LEU	3.5
1	A	7	GLY	3.4
1	B	420	LYS	2.7

### 6.2 Non-standard residues in protein, DNA, RNA chains [i](#)

There are no non-standard protein/DNA/RNA residues in this entry.

### 6.3 Carbohydrates [i](#)

There are no carbohydrates in this entry.

### 6.4 Ligands [i](#)

In the following table, the Atoms column lists the number of modelled atoms in the group and the number defined in the chemical component dictionary. The B-factors column lists the minimum, median, 95<sup>th</sup> percentile and maximum values of B factors of atoms in the group. The column labelled ‘Q< 0.9’ lists the number of atoms with occupancy less than 0.9.

Mol	Type	Chain	Res	Atoms	RSCC	RSR	B-factors( $\text{\AA}^2$ )	Q<0.9
3	BE2	A	1490	10/10	0.58	0.27	42,43,43,44	0
3	BE2	B	1490	10/10	0.75	0.22	43,45,45,46	0
2	FAD	B	1489	53/53	0.98	0.06	8,12,14,15	0
2	FAD	A	1489	53/53	0.98	0.06	9,12,14,15	0

## 6.5 Other polymers [i](#)

There are no such residues in this entry.