



wwPDB X-ray Structure Validation Summary Report ⓘ

Feb 17, 2018 – 04:45 am GMT

PDB ID : 1JRY
Title : Crystal structure of Arg402Lys mutant flavocytochrome c3 from *Shewanella frigidimarina*
Authors : Mowat, C.G.; Moysey, R.; Miles, C.S.; Leys, D.; Doherty, M.K.; Taylor, P.; Walkinshaw, M.D.; Reid, G.A.; Chapman, S.K.
Deposited on : 2001-08-15
Resolution : 2.00 Å(reported)

This is a wwPDB X-ray Structure Validation Summary Report for a publicly released PDB entry.

We welcome your comments at validation@mail.wwpdb.org

A user guide is available at

<https://www.wwpdb.org/validation/2017/XrayValidationReportHelp>

with specific help available everywhere you see the ⓘ symbol.

The following versions of software and data (see [references ⓘ](#)) were used in the production of this report:

MolProbity	:	4.02b-467
Mogul	:	1.7.3 (157068), CSD as539be (2018)
Xtriage (Phenix)	:	NOT EXECUTED
EDS	:	NOT EXECUTED
Percentile statistics	:	20171227.v01 (using entries in the PDB archive December 27th 2017)
Ideal geometry (proteins)	:	Engh & Huber (2001)
Ideal geometry (DNA, RNA)	:	Parkinson et al. (1996)
Validation Pipeline (wwPDB-VP)	:	trunk30686

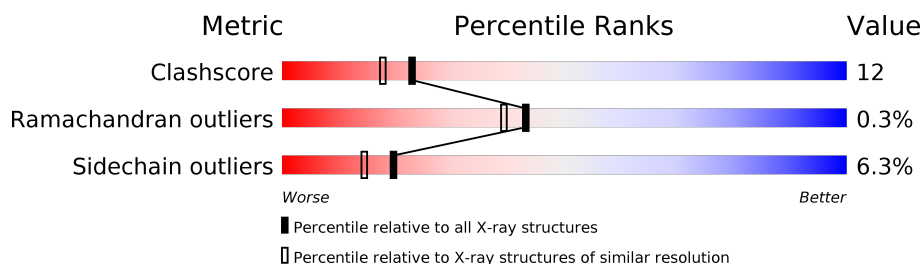
1 Overall quality at a glance

The following experimental techniques were used to determine the structure:

X-RAY DIFFRACTION

The reported resolution of this entry is 2.00 Å.

Percentile scores (ranging between 0-100) for global validation metrics of the entry are shown in the following graphic. The table shows the number of entries on which the scores are based.



Metric	Whole archive (#Entries)	Similar resolution (#Entries, resolution range(Å))
Clashscore	122078	8264 (2.00-2.00)
Ramachandran outliers	120005	8163 (2.00-2.00)
Sidechain outliers	119972	8162 (2.00-2.00)

The table below summarises the geometric issues observed across the polymeric chains and their fit to the electron density. The red, orange, yellow and green segments on the lower bar indicate the fraction of residues that contain outliers for ≥ 3 , 2, 1 and 0 types of geometric quality criteria. A grey segment represents the fraction of residues that are not modelled. The numeric value for each fraction is indicated below the corresponding segment, with a dot representing fractions $\leq 5\%$. The upper red bar (where present) indicates the fraction of residues that have poor fit to the electron density. The numeric value is given above the bar.

Note EDS was not executed.

Mol	Chain	Length	Quality of chain
1	A	571	
1	B	571	

The following table lists non-polymeric compounds, carbohydrate monomers and non-standard residues in protein, DNA, RNA chains that are outliers for geometric or electron-density-fit criteria:

Mol	Type	Chain	Res	Chirality	Geometry	Clashes	Electron density
4	FAD	A	1805	X	-	-	-
4	FAD	B	2805	X	-	-	-

2 Entry composition

There are 6 unique types of molecules in this entry. The entry contains 10740 atoms, of which 0 are hydrogens and 0 are deuteriums.

In the tables below, the ZeroOcc column contains the number of atoms modelled with zero occupancy, the AltConf column contains the number of residues with at least one atom in alternate conformation and the Trace column contains the number of residues modelled with at most 2 atoms.

- Molecule 1 is a protein called FLAVOCYTOCHROME C.

Mol	Chain	Residues	Atoms					ZeroOcc	AltConf	Trace
1	A	568	Total	C	N	O	S	0	0	0
			4215	2615	742	833	25			
1	B	568	Total	C	N	O	S	0	0	0
			4215	2615	742	833	25			

There are 2 discrepancies between the modelled and reference sequences:

Chain	Residue	Modelled	Actual	Comment	Reference
A	402	LYS	ARG	ENGINEERED	UNP Q02469
B	402	LYS	ARG	ENGINEERED	UNP Q02469

- Molecule 2 is SODIUM ION (three-letter code: NA) (formula: Na).

Mol	Chain	Residues	Atoms		ZeroOcc	AltConf
2	B	1	Total	Na	0	0
			1	1		
2	A	1	Total	Na	0	0
			1	1		

- Molecule 3 is PROTOPORPHYRIN IX CONTAINING FE (three-letter code: HEM) (formula: C₃₄H₃₂FeN₄O₄).



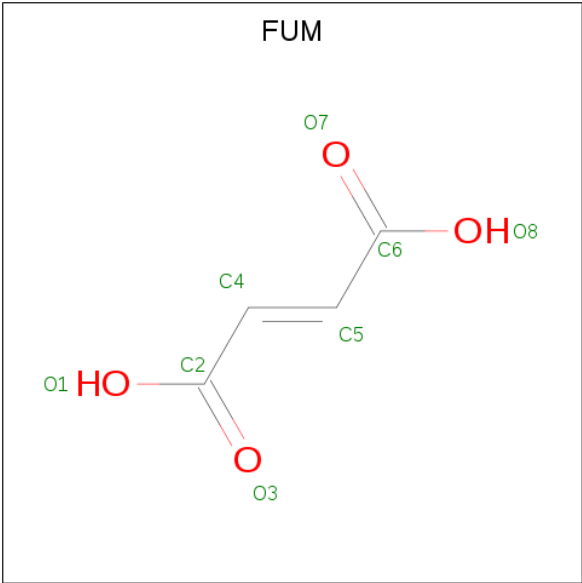
Mol	Chain	Residues	Atoms					ZeroOcc	AltConf
3	A	1	Total 43	C 34	Fe 1	N 4	O 4	0	0
3	A	1	Total 43	C 34	Fe 1	N 4	O 4	0	0
3	A	1	Total 43	C 34	Fe 1	N 4	O 4	0	0
3	A	1	Total 43	C 34	Fe 1	N 4	O 4	0	0
3	B	1	Total 43	C 34	Fe 1	N 4	O 4	0	0
3	B	1	Total 43	C 34	Fe 1	N 4	O 4	0	0
3	B	1	Total 43	C 34	Fe 1	N 4	O 4	0	0
3	B	1	Total 43	C 34	Fe 1	N 4	O 4	0	0

- Molecule 4 is FLAVIN-ADENINE DINUCLEOTIDE (three-letter code: FAD) (formula: $C_{27}H_{33}N_9O_{15}P_2$).



Mol	Chain	Residues	Atoms					ZeroOcc	AltConf
4	A	1	Total 53	C 27	N 9	O 15	P 2	0	0
4	B	1	Total 53	C 27	N 9	O 15	P 2	0	0

- Molecule 5 is FUMARIC ACID (three-letter code: FUM) (formula: C₄H₄O₄).



Mol	Chain	Residues	Atoms			ZeroOcc	AltConf
5	A	1	Total	C	O	0	0
			8	4	4		
5	B	1	Total	C	O	0	0
			8	4	4		

- Molecule 6 is water.

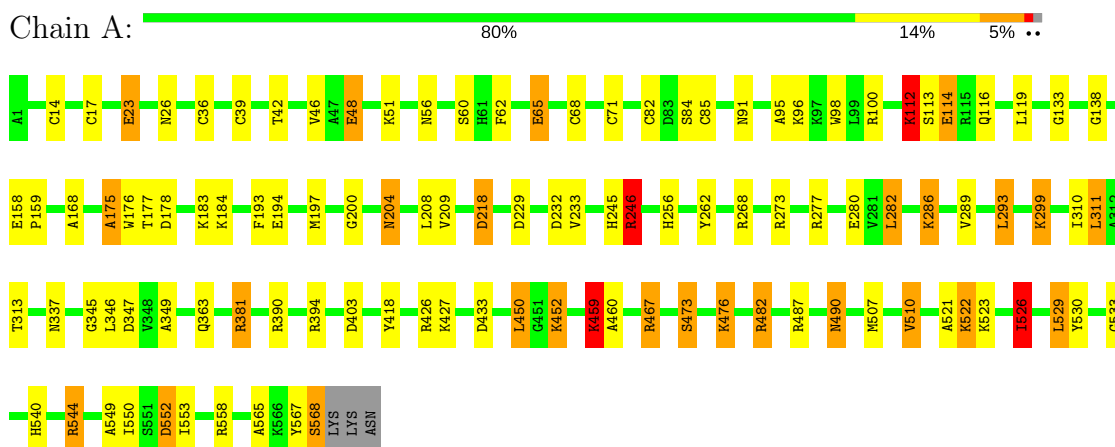
Mol	Chain	Residues	Atoms		ZeroOcc	AltConf
6	A	910	Total 910	O 910	0	0
6	B	932	Total 932	O 932	0	0

3 Residue-property plots

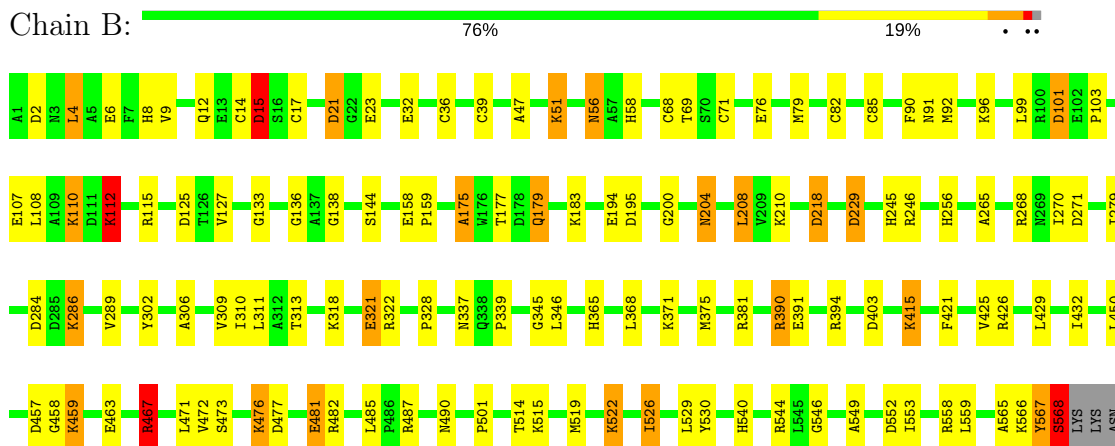
These plots are drawn for all protein, RNA and DNA chains in the entry. The first graphic for a chain summarises the proportions of the various outlier classes displayed in the second graphic. The second graphic shows the sequence view annotated by issues in geometry and electron density. Residues are color-coded according to the number of geometric quality criteria for which they contain at least one outlier: green = 0, yellow = 1, orange = 2 and red = 3 or more. A red dot above a residue indicates a poor fit to the electron density ($RSRZ > 2$). Stretches of 2 or more consecutive residues without any outlier are shown as a green connector. Residues present in the sample, but not in the model, are shown in grey.

Note EDS was not executed.

• Molecule 1: FLAVOCYTOCHROME C



• Molecule 1: FLAVOCYTOCHROME C



4 Data and refinement statistics

Xtriage (Phenix) and EDS were not executed - this section is therefore incomplete.

Property	Value	Source
Space group	P 1 21 1	Depositor
Cell constants a, b, c, α , β , γ	76.61Å 86.92Å 88.98Å 90.00° 104.48° 90.00°	Depositor
Resolution (Å)	20.00 – 2.00	Depositor
% Data completeness (in resolution range)	99.9 (20.00-2.00)	Depositor
R_{merge}	0.09	Depositor
R_{sym}	(Not available)	Depositor
Refinement program	REFMAC	Depositor
R, R_{free}	0.157 , 0.236	Depositor
Estimated twinning fraction	No twinning to report.	Xtriage
Total number of atoms	10740	wwPDB-VP
Average B, all atoms (Å ²)	15.0	wwPDB-VP

5 Model quality

5.1 Standard geometry

Bond lengths and bond angles in the following residue types are not validated in this section: HEM, FUM, FAD, NA

The Z score for a bond length (or angle) is the number of standard deviations the observed value is removed from the expected value. A bond length (or angle) with $|Z| > 5$ is considered an outlier worth inspection. RMSZ is the root-mean-square of all Z scores of the bond lengths (or angles).

Mol	Chain	Bond lengths		Bond angles	
		RMSZ	$\# Z > 5$	RMSZ	$\# Z > 5$
1	A	0.69	0/4285	1.48	45/5792 (0.8%)
1	B	0.68	0/4285	1.48	42/5792 (0.7%)
All	All	0.68	0/8570	1.48	87/11584 (0.8%)

Chiral center outliers are detected by calculating the chiral volume of a chiral center and verifying if the center is modelled as a planar moiety or with the opposite hand. A planarity outlier is detected by checking planarity of atoms in a peptide group, atoms in a mainchain group or atoms of a sidechain that are expected to be planar.

Mol	Chain	#Chirality outliers	#Planarity outliers
1	A	0	2
1	B	0	3
All	All	0	5

There are no bond length outliers.

The worst 5 of 87 bond angle outliers are listed below:

Mol	Chain	Res	Type	Atoms	Z	Observed(°)	Ideal(°)
1	B	487	ARG	CD-NE-CZ	24.28	157.60	123.60
1	A	487	ARG	NE-CZ-NH1	-15.64	112.48	120.30
1	B	381	ARG	NE-CZ-NH1	14.83	127.72	120.30
1	B	390	ARG	NE-CZ-NH2	-13.64	113.48	120.30
1	B	390	ARG	NE-CZ-NH1	12.80	126.70	120.30

There are no chirality outliers.

All (5) planarity outliers are listed below:

Mol	Chain	Res	Type	Group
1	A	175	ALA	Mainchain,Peptide

Continued on next page...

Continued from previous page...

Mol	Chain	Res	Type	Group
1	B	101	ASP	Mainchain
1	B	175	ALA	Mainchain,Peptide

5.2 Too-close contacts

In the following table, the Non-H and H(model) columns list the number of non-hydrogen atoms and hydrogen atoms in the chain respectively. The H(added) column lists the number of hydrogen atoms added and optimized by MolProbity. The Clashes column lists the number of clashes within the asymmetric unit, whereas Symm-Clashes lists symmetry related clashes.

Mol	Chain	Non-H	H(model)	H(added)	Clashes	Symm-Clashes
1	A	4215	0	4159	103	0
1	B	4215	0	4159	111	0
2	A	1	0	0	0	0
2	B	1	0	0	0	0
3	A	172	0	120	30	0
3	B	172	0	120	30	0
4	A	53	0	31	5	0
4	B	53	0	31	2	0
5	A	8	0	2	0	0
5	B	8	0	2	1	0
6	A	910	0	0	21	0
6	B	932	0	0	27	0
All	All	10740	0	8624	215	0

The all-atom clashscore is defined as the number of clashes found per 1000 atoms (including hydrogen atoms). The all-atom clashscore for this structure is 12.

The worst 5 of 215 close contacts within the same asymmetric unit are listed below, sorted by their clash magnitude.

Atom-1	Atom-2	Interatomic distance (Å)	Clash overlap (Å)
1:B:68:CYS:SG	3:B:803:HEM:CAB	2.42	1.07
1:B:36:CYS:SG	3:B:802:HEM:CAB	2.43	1.06
1:B:82:CYS:SG	3:B:804:HEM:CAB	2.44	1.05
1:A:36:CYS:SG	3:A:802:HEM:CAB	2.45	1.04
1:A:68:CYS:SG	3:A:803:HEM:CAB	2.49	1.00

There are no symmetry-related clashes.

5.3 Torsion angles

5.3.1 Protein backbone

In the following table, the Percentiles column shows the percent Ramachandran outliers of the chain as a percentile score with respect to all X-ray entries followed by that with respect to entries of similar resolution.

The Analysed column shows the number of residues for which the backbone conformation was analysed, and the total number of residues.

Mol	Chain	Analysed	Favoured	Allowed	Outliers	Percentiles	
1	A	566/571 (99%)	542 (96%)	21 (4%)	3 (0%)	31	25
1	B	566/571 (99%)	546 (96%)	20 (4%)	0	100	100
All	All	1132/1142 (99%)	1088 (96%)	41 (4%)	3 (0%)	43	39

All (3) Ramachandran outliers are listed below:

Mol	Chain	Res	Type
1	A	176	TRP
1	A	113	SER
1	A	114	GLU

5.3.2 Protein sidechains

In the following table, the Percentiles column shows the percent sidechain outliers of the chain as a percentile score with respect to all X-ray entries followed by that with respect to entries of similar resolution.

The Analysed column shows the number of residues for which the sidechain conformation was analysed, and the total number of residues.

Mol	Chain	Analysed	Rotameric	Outliers	Percentiles	
1	A	442/445 (99%)	417 (94%)	25 (6%)	23	17
1	B	442/445 (99%)	411 (93%)	31 (7%)	16	11
All	All	884/890 (99%)	828 (94%)	56 (6%)	20	14

5 of 56 residues with a non-rotameric sidechain are listed below:

Mol	Chain	Res	Type
1	B	4	LEU
1	B	99	LEU
1	B	515	LYS

Continued on next page...

Continued from previous page...

Mol	Chain	Res	Type
1	B	15	ASP
1	B	51	LYS

Some sidechains can be flipped to improve hydrogen bonding and reduce clashes. 5 of 18 such sidechains are listed below:

Mol	Chain	Res	Type
1	A	540	HIS
1	B	10	GLN
1	B	245	HIS
1	A	256	HIS
1	A	490	ASN

5.3.3 RNA [i](#)

There are no RNA molecules in this entry.

5.4 Non-standard residues in protein, DNA, RNA chains [i](#)

There are no non-standard protein/DNA/RNA residues in this entry.

5.5 Carbohydrates [i](#)

There are no carbohydrates in this entry.

5.6 Ligand geometry [i](#)

Of 14 ligands modelled in this entry, 2 are monoatomic - leaving 12 for Mogul analysis.

In the following table, the Counts columns list the number of bonds (or angles) for which Mogul statistics could be retrieved, the number of bonds (or angles) that are observed in the model and the number of bonds (or angles) that are defined in the Chemical Component Dictionary. The Link column lists molecule types, if any, to which the group is linked. The Z score for a bond length (or angle) is the number of standard deviations the observed value is removed from the expected value. A bond length (or angle) with $|Z| > 2$ is considered an outlier worth inspection. RMSZ is the root-mean-square of all Z scores of the bond lengths (or angles).

Mol	Type	Chain	Res	Link	Bond lengths			Bond angles		
					Counts	RMSZ	$\# Z > 2$	Counts	RMSZ	$\# Z > 2$
4	FAD	A	1805	-	51,58,58	1.65	10 (19%)	57,89,89	3.06	21 (36%)

Mol	Type	Chain	Res	Link	Bond lengths			Bond angles		
					Counts	RMSZ	# Z > 2	Counts	RMSZ	# Z > 2
5	FUM	A	1806	-	1,7,7	0.77	0	0,8,8	0.00	-
3	HEM	A	801	1	27,50,50	2.10	7 (25%)	17,82,82	1.93	5 (29%)
3	HEM	A	802	1	27,50,50	2.07	5 (18%)	17,82,82	1.94	6 (35%)
3	HEM	A	803	1	27,50,50	1.98	7 (25%)	17,82,82	1.89	7 (41%)
3	HEM	A	804	1	27,50,50	2.01	5 (18%)	17,82,82	2.09	8 (47%)
4	FAD	B	2805	-	51,58,58	1.83	9 (17%)	57,89,89	3.37	25 (43%)
5	FUM	B	2806	-	1,7,7	0.78	0	0,8,8	0.00	-
3	HEM	B	801	1	27,50,50	2.12	6 (22%)	17,82,82	1.98	6 (35%)
3	HEM	B	802	1	27,50,50	2.01	6 (22%)	17,82,82	2.11	8 (47%)
3	HEM	B	803	1	27,50,50	2.13	6 (22%)	17,82,82	2.05	7 (41%)
3	HEM	B	804	1	27,50,50	2.06	5 (18%)	17,82,82	2.07	5 (29%)

In the following table, the Chirals column lists the number of chiral outliers, the number of chiral centers analysed, the number of these observed in the model and the number defined in the Chemical Component Dictionary. Similar counts are reported in the Torsion and Rings columns. '-' means no outliers of that kind were identified.

Mol	Type	Chain	Res	Link	Chirals	Torsions	Rings
4	FAD	A	1805	-	2/2/9/9	0/28/50/50	0/6/6/6
5	FUM	A	1806	-	-	0/0/5/5	0/0/0/0
3	HEM	A	801	1	-	0/6/54/54	0/0/8/8
3	HEM	A	802	1	-	0/6/54/54	0/0/8/8
3	HEM	A	803	1	-	0/6/54/54	0/0/8/8
3	HEM	A	804	1	-	0/6/54/54	0/0/8/8
4	FAD	B	2805	-	2/2/9/9	0/28/50/50	0/6/6/6
5	FUM	B	2806	-	-	0/0/5/5	0/0/0/0
3	HEM	B	801	1	-	0/6/54/54	0/0/8/8
3	HEM	B	802	1	-	0/6/54/54	0/0/8/8
3	HEM	B	803	1	-	0/6/54/54	0/0/8/8
3	HEM	B	804	1	-	0/6/54/54	0/0/8/8

The worst 5 of 66 bond length outliers are listed below:

Mol	Chain	Res	Type	Atoms	Z	Observed(Å)	Ideal(Å)
3	A	802	HEM	C3B-C2B	-5.55	1.32	1.40
3	B	804	HEM	C3B-C2B	-5.45	1.32	1.40
3	B	803	HEM	C3C-C2C	-5.44	1.32	1.40
3	B	803	HEM	C3B-C2B	-5.35	1.33	1.40
3	B	801	HEM	C3B-C2B	-5.15	1.33	1.40

The worst 5 of 98 bond angle outliers are listed below:

Mol	Chain	Res	Type	Atoms	Z	Observed(°)	Ideal(°)
4	B	2805	FAD	C4X-C4-N3	-9.98	109.27	123.47
4	A	1805	FAD	C4X-C4-N3	-9.45	110.03	123.47
4	A	1805	FAD	C4X-C10-N10	-4.75	115.98	120.40
4	B	2805	FAD	C4X-C10-N10	-4.54	116.18	120.40
4	A	1805	FAD	C1'-N10-C9A	-4.34	114.46	118.31

All (4) chirality outliers are listed below:

Mol	Chain	Res	Type	Atom
4	B	2805	FAD	C4'
4	B	2805	FAD	C3'
4	A	1805	FAD	C4'
4	A	1805	FAD	C3'

There are no torsion outliers.

There are no ring outliers.

11 monomers are involved in 68 short contacts:

Mol	Chain	Res	Type	Clashes	Symm-Clashes
4	A	1805	FAD	5	0
3	A	801	HEM	7	0
3	A	802	HEM	7	0
3	A	803	HEM	6	0
3	A	804	HEM	10	0
4	B	2805	FAD	2	0
5	B	2806	FUM	1	0
3	B	801	HEM	6	0
3	B	802	HEM	6	0
3	B	803	HEM	11	0
3	B	804	HEM	7	0

5.7 Other polymers [i](#)

There are no such residues in this entry.

5.8 Polymer linkage issues [i](#)

There are no chain breaks in this entry.

6 Fit of model and data [i](#)

6.1 Protein, DNA and RNA chains [i](#)

EDS was not executed - this section is therefore empty.

6.2 Non-standard residues in protein, DNA, RNA chains [i](#)

EDS was not executed - this section is therefore empty.

6.3 Carbohydrates [i](#)

EDS was not executed - this section is therefore empty.

6.4 Ligands [i](#)

EDS was not executed - this section is therefore empty.

6.5 Other polymers [i](#)

EDS was not executed - this section is therefore empty.