



Full wwPDB X-ray Structure Validation Report ⓘ

Jul 9, 2019 – 08:55 PM EDT

PDB ID : 4JRN
Title : ROP18 kinase domain in complex with AMP-PNP and sucrose
Authors : Lim, D.; Gold, D.A.; Lindsay, J.; Rosowski, E.E.; Niedelman, W.; Yaffe, M.B.; Saeij, J.P.J.
Deposited on : 2013-03-21
Resolution : 2.71 Å(reported)

This is a Full wwPDB X-ray Structure Validation Report for a publicly released PDB entry.

We welcome your comments at validation@mail.wwpdb.org

A user guide is available at

<https://www.wwpdb.org/validation/2017/XrayValidationReportHelp>

with specific help available everywhere you see the ⓘ symbol.

The following versions of software and data (see [references ⓘ](#)) were used in the production of this report:

MolProbity : 4.02b-467
Mogul : 1.8.0 (224370), CSD as540be (2019)
Xtriage (Phenix) : 1.13
EDS : 2.3.2
buster-report : 1.1.7 (2018)
Percentile statistics : 20171227.v01 (using entries in the PDB archive December 27th 2017)
Refmac : 5.8.0158
CCP4 : 7.0 (Gargrove)
Ideal geometry (proteins) : Engh & Huber (2001)
Ideal geometry (DNA, RNA) : Parkinson et al. (1996)
Validation Pipeline (wwPDB-VP) : 2.3.2

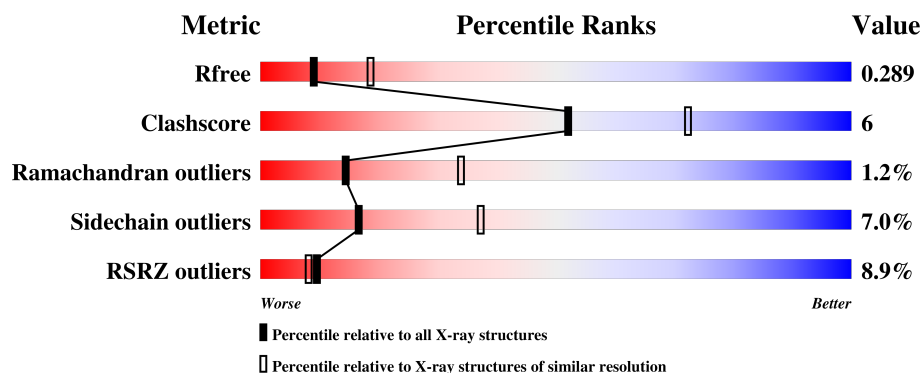
1 Overall quality at a glance

The following experimental techniques were used to determine the structure:

X-RAY DIFFRACTION

The reported resolution of this entry is 2.71 Å.

Percentile scores (ranging between 0-100) for global validation metrics of the entry are shown in the following graphic. The table shows the number of entries on which the scores are based.



Metric	Whole archive (#Entries)	Similar resolution (#Entries, resolution range(Å))
R_{free}	111664	2885 (2.74-2.70)
Clashscore	122126	3205 (2.74-2.70)
Ramachandran outliers	120053	3157 (2.74-2.70)
Sidechain outliers	120020	3158 (2.74-2.70)
RSRZ outliers	108989	2802 (2.74-2.70)

The table below summarises the geometric issues observed across the polymeric chains and their fit to the electron density. The red, orange, yellow and green segments on the lower bar indicate the fraction of residues that contain outliers for ≥ 3 , 2, 1 and 0 types of geometric quality criteria. A grey segment represents the fraction of residues that are not modelled. The numeric value for each fraction is indicated below the corresponding segment, with a dot representing fractions $\leq 5\%$. The upper red bar (where present) indicates the fraction of residues that have poor fit to the electron density. The numeric value is given above the bar.

Mol	Chain	Length	Quality of chain
1	A	372	<div> <div>8%</div> <div>74%</div> <div>17%</div> <div>• 6%</div> </div>

2 Entry composition [i](#)

There are 5 unique types of molecules in this entry. The entry contains 2800 atoms, of which 0 are hydrogens and 0 are deuteriums.

In the tables below, the ZeroOcc column contains the number of atoms modelled with zero occupancy, the AltConf column contains the number of residues with at least one atom in alternate conformation and the Trace column contains the number of residues modelled with at most 2 atoms.

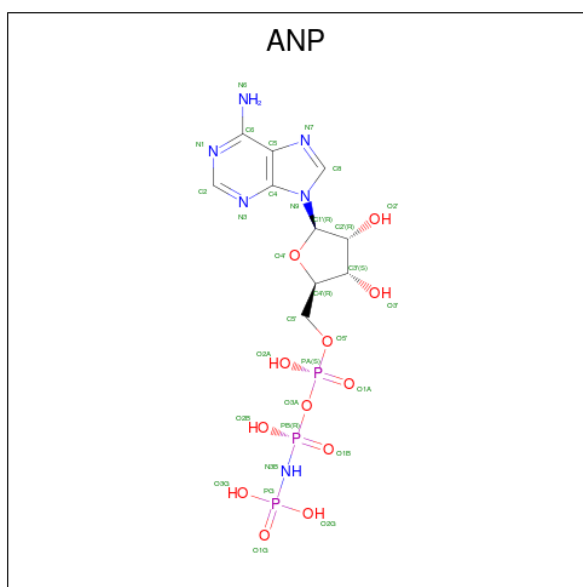
- Molecule 1 is a protein called Rhoptyr kinase family protein.

Mol	Chain	Residues	Atoms					ZeroOcc	AltConf	Trace
			Total	C	N	O	S			
1	A	349	2736	1736	462	521	17	0	0	0

There are 4 discrepancies between the modelled and reference sequences:

Chain	Residue	Modelled	Actual	Comment	Reference
A	183	GLY	-	EXPRESSION TAG	UNP Q2PAY2
A	184	ALA	-	EXPRESSION TAG	UNP Q2PAY2
A	185	HIS	-	EXPRESSION TAG	UNP Q2PAY2
A	186	MET	-	EXPRESSION TAG	UNP Q2PAY2

- Molecule 2 is PHOSPHOAMINOPHOSPHONIC ACID-ADENYLATE ESTER (three-letter code: ANP) (formula: $C_{10}H_{17}N_6O_{12}P_3$).

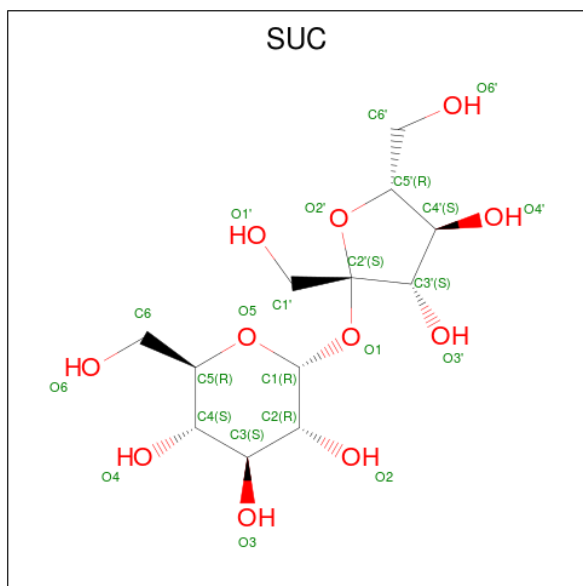


Mol	Chain	Residues	Atoms					ZeroOcc	AltConf
			Total	C	N	O	P		
2	A	1	31	10	6	12	3	0	0

- Molecule 3 is MAGNESIUM ION (three-letter code: MG) (formula: Mg).

Mol	Chain	Residues	Atoms		ZeroOcc	AltConf
3	A	2	Total	Mg	0	0
			2	2		

- Molecule 4 is SUCROSE (three-letter code: SUC) (formula: C₁₂H₂₂O₁₁).



Mol	Chain	Residues	Atoms			ZeroOcc	AltConf
4	A	1	Total	C	O	0	0
			23	12	11		

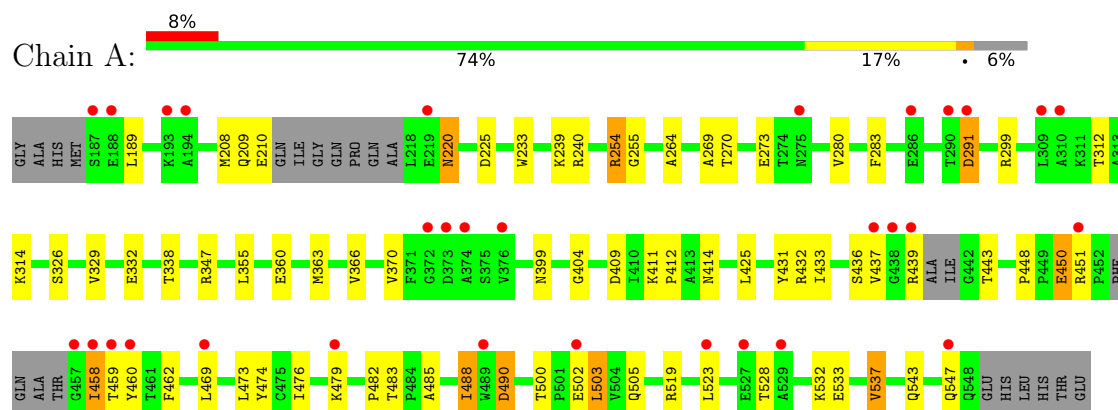
- Molecule 5 is water.

Mol	Chain	Residues	Atoms		ZeroOcc	AltConf
5	A	8	Total	O	0	0
			8	8		

3 Residue-property plots

These plots are drawn for all protein, RNA and DNA chains in the entry. The first graphic for a chain summarises the proportions of the various outlier classes displayed in the second graphic. The second graphic shows the sequence view annotated by issues in geometry and electron density. Residues are color-coded according to the number of geometric quality criteria for which they contain at least one outlier: green = 0, yellow = 1, orange = 2 and red = 3 or more. A red dot above a residue indicates a poor fit to the electron density ($RSRZ > 2$). Stretches of 2 or more consecutive residues without any outlier are shown as a green connector. Residues present in the sample, but not in the model, are shown in grey.

- Molecule 1: Rhoptyr kinase family protein



4 Data and refinement statistics

Property	Value	Source
Space group	P 31 2 1	Depositor
Cell constants a, b, c, α , β , γ	48.65Å 48.65Å 293.75Å 90.00° 90.00° 120.00°	Depositor
Resolution (Å)	36.55 – 2.71 36.54 – 2.71	Depositor EDS
% Data completeness (in resolution range)	99.6 (36.55-2.71) 97.1 (36.54-2.71)	Depositor EDS
R_{merge}	0.07	Depositor
R_{sym}	(Not available)	Depositor
$\langle I/\sigma(I) \rangle$ ¹	5.27 (at 2.72Å)	Xtriage
Refinement program	PHENIX (phenix.refine: 1.7.1_743), CNS	Depositor
R, R_{free}	0.232 , 0.289 0.233 , 0.289	Depositor DCC
R_{free} test set	596 reflections (5.05%)	wwPDB-VP
Wilson B-factor (Å ²)	53.2	Xtriage
Anisotropy	0.620	Xtriage
Bulk solvent k_{sol} (e/Å ³), B_{sol} (Å ²)	0.32 , 47.8	EDS
L-test for twinning ²	$\langle L \rangle = 0.48$, $\langle L^2 \rangle = 0.31$	Xtriage
Estimated twinning fraction	0.055 for -h,-k,l	Xtriage
F_o, F_c correlation	0.93	EDS
Total number of atoms	2800	wwPDB-VP
Average B, all atoms (Å ²)	60.0	wwPDB-VP

Xtriage's analysis on translational NCS is as follows: *The largest off-origin peak in the Patterson function is 5.63% of the height of the origin peak. No significant pseudotranslation is detected.*

¹Intensities estimated from amplitudes.

²Theoretical values of $\langle |L| \rangle$, $\langle L^2 \rangle$ for acentric reflections are 0.5, 0.333 respectively for untwinned datasets, and 0.375, 0.2 for perfectly twinned datasets.

5 Model quality

5.1 Standard geometry

Bond lengths and bond angles in the following residue types are not validated in this section: SUC, MG, ANP

The Z score for a bond length (or angle) is the number of standard deviations the observed value is removed from the expected value. A bond length (or angle) with $|Z| > 5$ is considered an outlier worth inspection. RMSZ is the root-mean-square of all Z scores of the bond lengths (or angles).

Mol	Chain	Bond lengths		Bond angles	
		RMSZ	$\# Z > 5$	RMSZ	$\# Z > 5$
1	A	0.22	0/2792	0.40	0/3786

There are no bond length outliers.

There are no bond angle outliers.

There are no chirality outliers.

There are no planarity outliers.

5.2 Too-close contacts

In the following table, the Non-H and H(model) columns list the number of non-hydrogen atoms and hydrogen atoms in the chain respectively. The H(added) column lists the number of hydrogen atoms added and optimized by MolProbity. The Clashes column lists the number of clashes within the asymmetric unit, whereas Symm-Clashes lists symmetry related clashes.

Mol	Chain	Non-H	H(model)	H(added)	Clashes	Symm-Clashes
1	A	2736	0	2708	33	0
2	A	31	0	13	0	0
3	A	2	0	0	0	0
4	A	23	0	22	0	0
5	A	8	0	0	0	0
All	All	2800	0	2743	33	0

The all-atom clashscore is defined as the number of clashes found per 1000 atoms (including hydrogen atoms). The all-atom clashscore for this structure is 6.

All (33) close contacts within the same asymmetric unit are listed below, sorted by their clash magnitude.

Atom-1	Atom-2	Interatomic distance (Å)	Clash overlap (Å)
1:A:299:ARG:NH2	1:A:431:TYR:O	2.34	0.60
1:A:450:GLU:OE2	1:A:519:ARG:NH2	2.33	0.60
1:A:433:ILE:HG13	1:A:436:SER:HB2	1.86	0.57
1:A:209:GLN:HG3	1:A:210:GLU:HG3	1.89	0.53
1:A:482:PRO:HB2	1:A:488:ILE:HG13	1.92	0.49
1:A:326:SER:N	1:A:355:LEU:O	2.45	0.49
1:A:254:ARG:HG2	1:A:255:GLY:N	2.28	0.48
1:A:291:ASP:N	1:A:291:ASP:OD1	2.39	0.47
1:A:533:GLU:O	1:A:537:VAL:HG12	2.14	0.47
1:A:448:PRO:HD2	1:A:451:ARG:HD3	1.97	0.47
1:A:411:LYS:HE3	1:A:443:THR:HG21	1.96	0.47
1:A:225:ASP:OD2	1:A:254:ARG:NH2	2.49	0.46
1:A:483:THR:HG22	1:A:485:ALA:H	1.81	0.45
1:A:363:MET:HB3	1:A:412:PRO:O	2.17	0.45
1:A:473:LEU:HD23	1:A:476:ILE:HD12	1.99	0.45
1:A:503:LEU:H	1:A:503:LEU:HD22	1.82	0.44
1:A:233:TRP:CH2	1:A:280:VAL:HG21	2.52	0.44
1:A:409:ASP:OD1	1:A:414:ASN:ND2	2.50	0.44
1:A:363:MET:HA	1:A:366:VAL:HG22	1.99	0.44
1:A:500:THR:O	1:A:505:GLN:NE2	2.41	0.43
1:A:458:ILE:HD11	1:A:460:TYR:CE2	2.54	0.42
1:A:208:MET:HE1	1:A:366:VAL:HG12	2.01	0.42
1:A:528:THR:O	1:A:532:LYS:HG3	2.19	0.42
1:A:312:THR:HG22	1:A:314:LYS:H	1.84	0.42
1:A:437:VAL:HA	1:A:459:THR:HA	2.01	0.42
1:A:474:TYR:CG	1:A:482:PRO:HG3	2.55	0.41
1:A:432:ARG:HH21	1:A:439:ARG:HH11	1.68	0.41
1:A:189:LEU:HB3	1:A:399:ASN:ND2	2.36	0.41
1:A:264:ALA:HB2	1:A:283:PHE:CD2	2.55	0.40
1:A:543:GLN:O	1:A:547:GLN:HG3	2.22	0.40
1:A:269:ALA:HB2	1:A:280:VAL:HG23	2.03	0.40
1:A:404:GLY:HA2	1:A:462:PHE:HZ	1.86	0.40
1:A:239:LYS:HD3	1:A:239:LYS:HA	1.90	0.40

There are no symmetry-related clashes.

5.3 Torsion angles

5.3.1 Protein backbone

In the following table, the Percentiles column shows the percent Ramachandran outliers of the chain as a percentile score with respect to all X-ray entries followed by that with respect to entries

of similar resolution.

The Analysed column shows the number of residues for which the backbone conformation was analysed, and the total number of residues.

Mol	Chain	Analysed	Favoured	Allowed	Outliers	Percentiles	
1	A	341/372 (92%)	324 (95%)	13 (4%)	4 (1%)	14	34

All (4) Ramachandran outliers are listed below:

Mol	Chain	Res	Type
1	A	332	GLU
1	A	490	ASP
1	A	220	ASN
1	A	479	LYS

5.3.2 Protein sidechains ⓘ

In the following table, the Percentiles column shows the percent sidechain outliers of the chain as a percentile score with respect to all X-ray entries followed by that with respect to entries of similar resolution.

The Analysed column shows the number of residues for which the sidechain conformation was analysed, and the total number of residues.

Mol	Chain	Analysed	Rotameric	Outliers	Percentiles	
1	A	300/317 (95%)	279 (93%)	21 (7%)	16	37

All (21) residues with a non-rotameric sidechain are listed below:

Mol	Chain	Res	Type
1	A	220	ASN
1	A	240	ARG
1	A	254	ARG
1	A	270	THR
1	A	273	GLU
1	A	291	ASP
1	A	329	VAL
1	A	338	THR
1	A	347	ARG
1	A	360	GLU
1	A	370	VAL
1	A	425	LEU
1	A	450	GLU

Continued on next page...

Continued from previous page...

Mol	Chain	Res	Type
1	A	458	ILE
1	A	469	LEU
1	A	488	ILE
1	A	490	ASP
1	A	502	GLU
1	A	503	LEU
1	A	523	LEU
1	A	537	VAL

Some sidechains can be flipped to improve hydrogen bonding and reduce clashes. All (1) such sidechains are listed below:

Mol	Chain	Res	Type
1	A	220	ASN

5.3.3 RNA [i](#)

There are no RNA molecules in this entry.

5.4 Non-standard residues in protein, DNA, RNA chains [i](#)

There are no non-standard protein/DNA/RNA residues in this entry.

5.5 Carbohydrates [i](#)

There are no carbohydrates in this entry.

5.6 Ligand geometry [i](#)

Of 4 ligands modelled in this entry, 2 are monoatomic - leaving 2 for Mogul analysis.

In the following table, the Counts columns list the number of bonds (or angles) for which Mogul statistics could be retrieved, the number of bonds (or angles) that are observed in the model and the number of bonds (or angles) that are defined in the Chemical Component Dictionary. The Link column lists molecule types, if any, to which the group is linked. The Z score for a bond length (or angle) is the number of standard deviations the observed value is removed from the expected value. A bond length (or angle) with $|Z| > 2$ is considered an outlier worth inspection. RMSZ is the root-mean-square of all Z scores of the bond lengths (or angles).

Mol	Type	Chain	Res	Link	Bond lengths			Bond angles		
					Counts	RMSZ	# Z > 2	Counts	RMSZ	# Z > 2
2	ANP	A	601	3	28,33,33	1.75	7 (25%)	29,52,52	1.89	8 (27%)
4	SUC	A	604	-	24,24,24	0.70	1 (4%)	36,36,36	0.72	0

In the following table, the Chirals column lists the number of chiral outliers, the number of chiral centers analysed, the number of these observed in the model and the number defined in the Chemical Component Dictionary. Similar counts are reported in the Torsion and Rings columns. '-' means no outliers of that kind were identified.

Mol	Type	Chain	Res	Link	Chirals	Torsions	Rings
2	ANP	A	601	3	-	4/13/38/38	0/3/3/3
4	SUC	A	604	-	-	6/12/51/51	0/2/2/2

All (8) bond length outliers are listed below:

Mol	Chain	Res	Type	Atoms	Z	Observed(Å)	Ideal(Å)
2	A	601	ANP	PB-N3B	3.93	1.73	1.63
2	A	601	ANP	PB-O3A	3.76	1.63	1.59
2	A	601	ANP	PG-N3B	3.48	1.72	1.63
2	A	601	ANP	O4'-C1'	3.38	1.46	1.41
2	A	601	ANP	PB-O1B	2.51	1.49	1.46
2	A	601	ANP	C8-N7	-2.47	1.30	1.34
4	A	604	SUC	O5-C1	2.28	1.47	1.41
2	A	601	ANP	PG-O2G	2.12	1.62	1.56

All (8) bond angle outliers are listed below:

Mol	Chain	Res	Type	Atoms	Z	Observed(°)	Ideal(°)
2	A	601	ANP	N3-C2-N1	-4.58	121.30	128.68
2	A	601	ANP	O3A-PB-N3B	4.05	117.81	106.59
2	A	601	ANP	PA-O5'-C5'	-3.09	103.53	121.68
2	A	601	ANP	O2G-PG-O1G	-2.90	106.05	113.43
2	A	601	ANP	O3'-C3'-C4'	-2.82	102.93	111.07
2	A	601	ANP	PA-O3A-PB	-2.73	122.91	132.46
2	A	601	ANP	O4'-C4'-C3'	2.39	109.85	105.14
2	A	601	ANP	O1B-PB-N3B	-2.16	108.56	111.79

There are no chirality outliers.

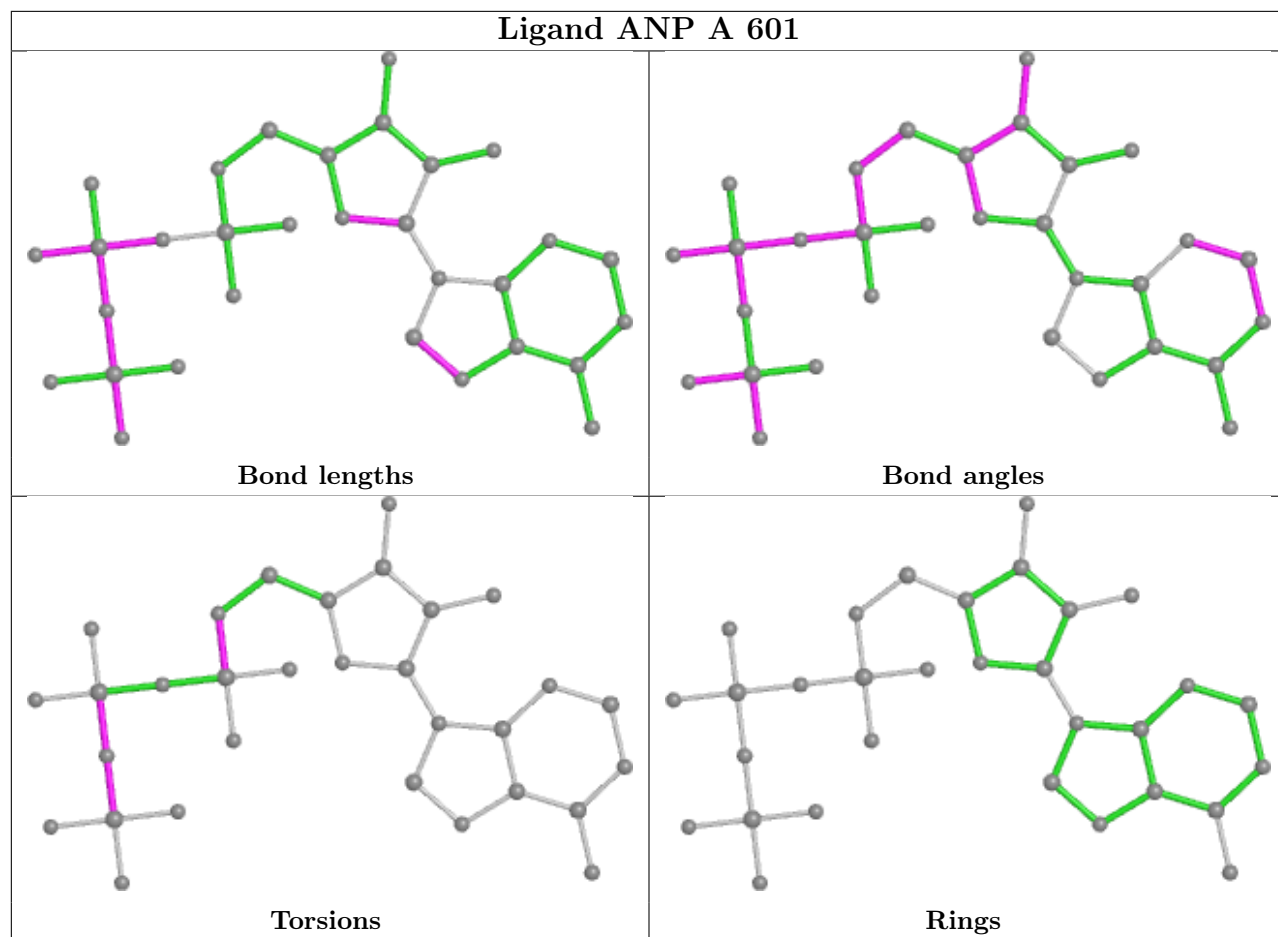
All (10) torsion outliers are listed below:

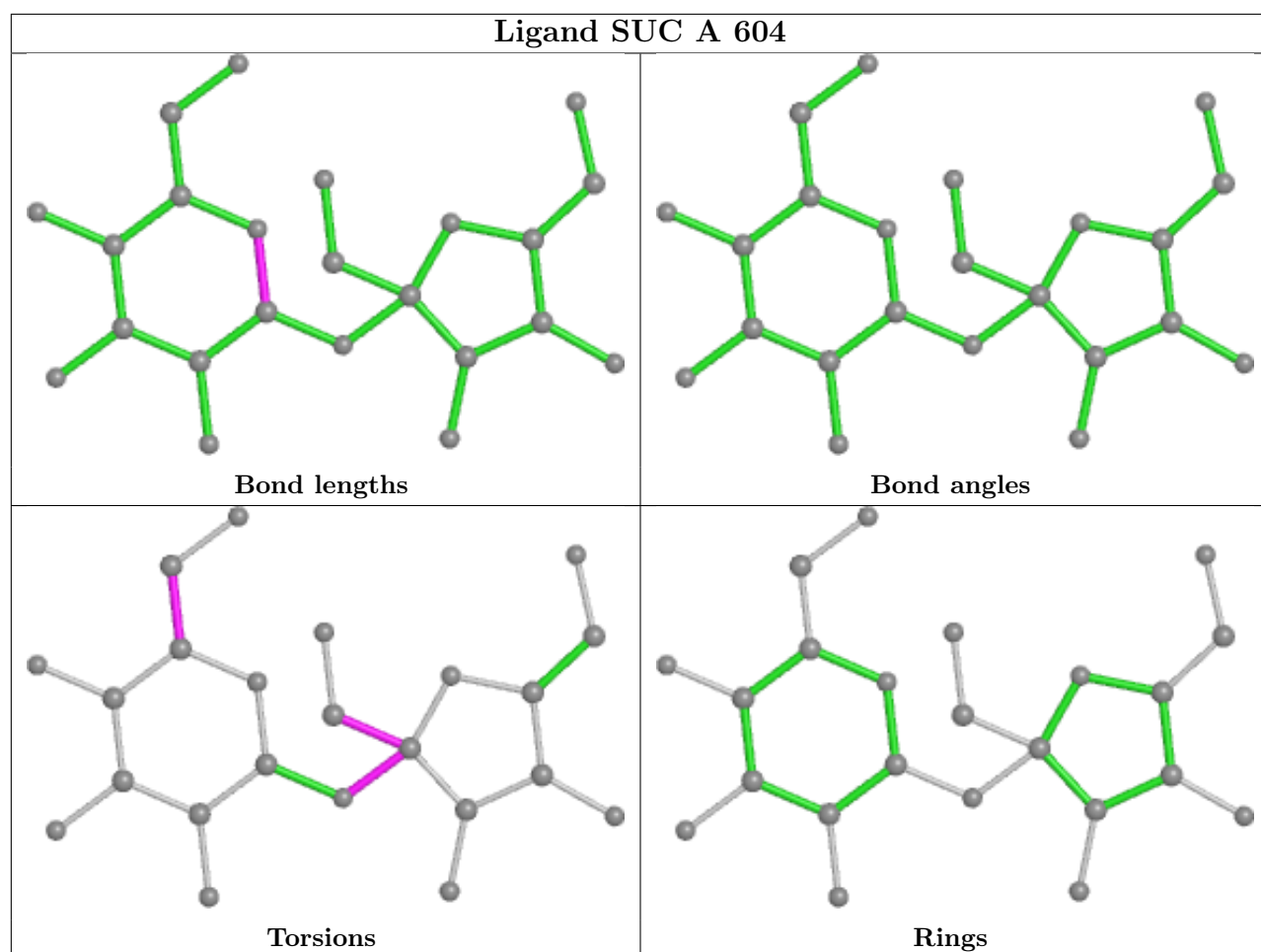
Mol	Chain	Res	Type	Atoms
2	A	601	ANP	PB-N3B-PG-O1G
2	A	601	ANP	PG-N3B-PB-O1B
4	A	604	SUC	O1'-C1'-C2'-O1
4	A	604	SUC	O1'-C1'-C2'-C3'
4	A	604	SUC	O1'-C1'-C2'-O2'
4	A	604	SUC	C4-C5-C6-O6
4	A	604	SUC	C3'-C2'-O1-C1
4	A	604	SUC	C1'-C2'-O1-C1
2	A	601	ANP	C5'-O5'-PA-O3A
2	A	601	ANP	C5'-O5'-PA-O1A

There are no ring outliers.

No monomer is involved in short contacts.

The following is a two-dimensional graphical depiction of Mogul quality analysis of bond lengths, bond angles, torsion angles, and ring geometry for all instances of the Ligand of Interest. In addition, ligands with molecular weight > 250 and outliers as shown on the validation Tables will also be included. For torsion angles, if less than 5% of the Mogul distribution of torsion angles is within 10 degrees of the torsion angle in question, then that torsion angle is considered an outlier. Any bond that is central to one or more torsion angles identified as an outlier by Mogul will be highlighted in the graph. For rings, the root-mean-square deviation (RMSD) between the ring in question and similar rings identified by Mogul is calculated over all ring torsion angles. If the average RMSD is greater than 60 degrees and the minimal RMSD between the ring in question and any Mogul-identified rings is also greater than 60 degrees, then that ring is considered an outlier. The outliers are highlighted in purple. The color gray indicates Mogul did not find sufficient equivalents in the CSD to analyse the geometry.





5.7 Other polymers [i](#)

There are no such residues in this entry.

5.8 Polymer linkage issues [i](#)

There are no chain breaks in this entry.

6 Fit of model and data

6.1 Protein, DNA and RNA chains

In the following table, the column labelled ‘#RSRZ> 2’ contains the number (and percentage) of RSRZ outliers, followed by percent RSRZ outliers for the chain as percentile scores relative to all X-ray entries and entries of similar resolution. The OWAB column contains the minimum, median, 95th percentile and maximum values of the occupancy-weighted average B-factor per residue. The column labelled ‘Q< 0.9’ lists the number of (and percentage) of residues with an average occupancy less than 0.9.

Mol	Chain	Analysed	<RSRZ>	#RSRZ>2	OWAB(Å ²)	Q<0.9
1	A	349/372 (93%)	0.47	31 (8%) 9 8	27, 59, 87, 114	0

All (31) RSRZ outliers are listed below:

Mol	Chain	Res	Type	RSRZ
1	A	438	GLY	5.2
1	A	437	VAL	4.4
1	A	451	ARG	3.5
1	A	187	SER	3.5
1	A	372	GLY	3.4
1	A	439	ARG	3.4
1	A	310	ALA	3.3
1	A	458	ILE	3.3
1	A	460	TYR	3.0
1	A	459	THR	2.9
1	A	309	LEU	2.8
1	A	291	ASP	2.8
1	A	374	ALA	2.7
1	A	469	LEU	2.6
1	A	194	ALA	2.6
1	A	193	LYS	2.6
1	A	489	TRP	2.5
1	A	373	ASP	2.5
1	A	527	GLU	2.4
1	A	219	GLU	2.4
1	A	275	ASN	2.3
1	A	376	VAL	2.3
1	A	502	GLU	2.3
1	A	290	THR	2.2
1	A	547	GLN	2.2
1	A	188	GLU	2.2
1	A	479	LYS	2.2

Continued on next page...

Continued from previous page...

Mol	Chain	Res	Type	RSRZ
1	A	457	GLY	2.1
1	A	286	GLU	2.1
1	A	523	LEU	2.1
1	A	529	ALA	2.0

6.2 Non-standard residues in protein, DNA, RNA chains [i](#)

There are no non-standard protein/DNA/RNA residues in this entry.

6.3 Carbohydrates [i](#)

There are no carbohydrates in this entry.

6.4 Ligands [i](#)

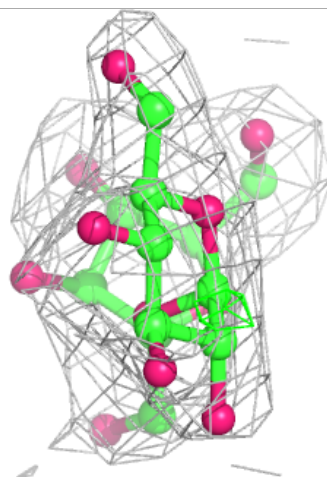
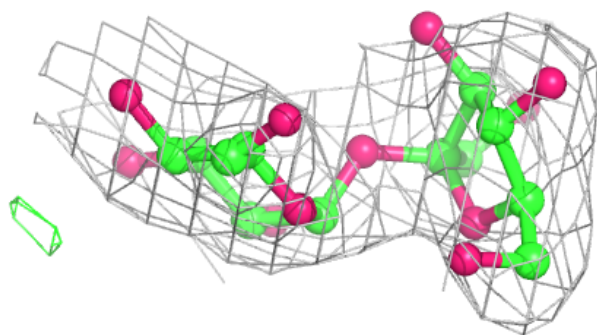
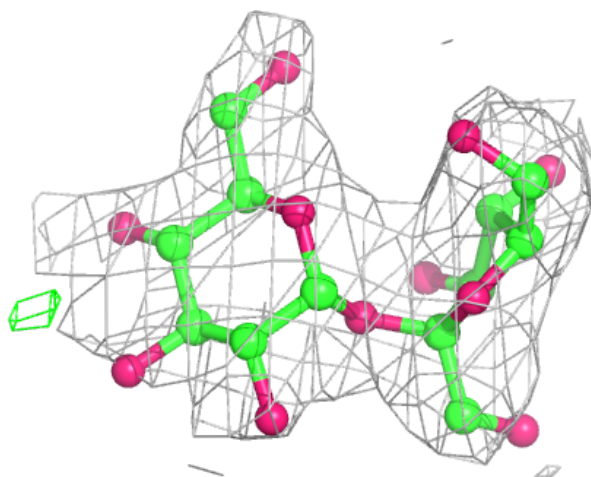
In the following table, the Atoms column lists the number of modelled atoms in the group and the number defined in the chemical component dictionary. The B-factors column lists the minimum, median, 95th percentile and maximum values of B factors of atoms in the group. The column labelled 'Q< 0.9' lists the number of atoms with occupancy less than 0.9.

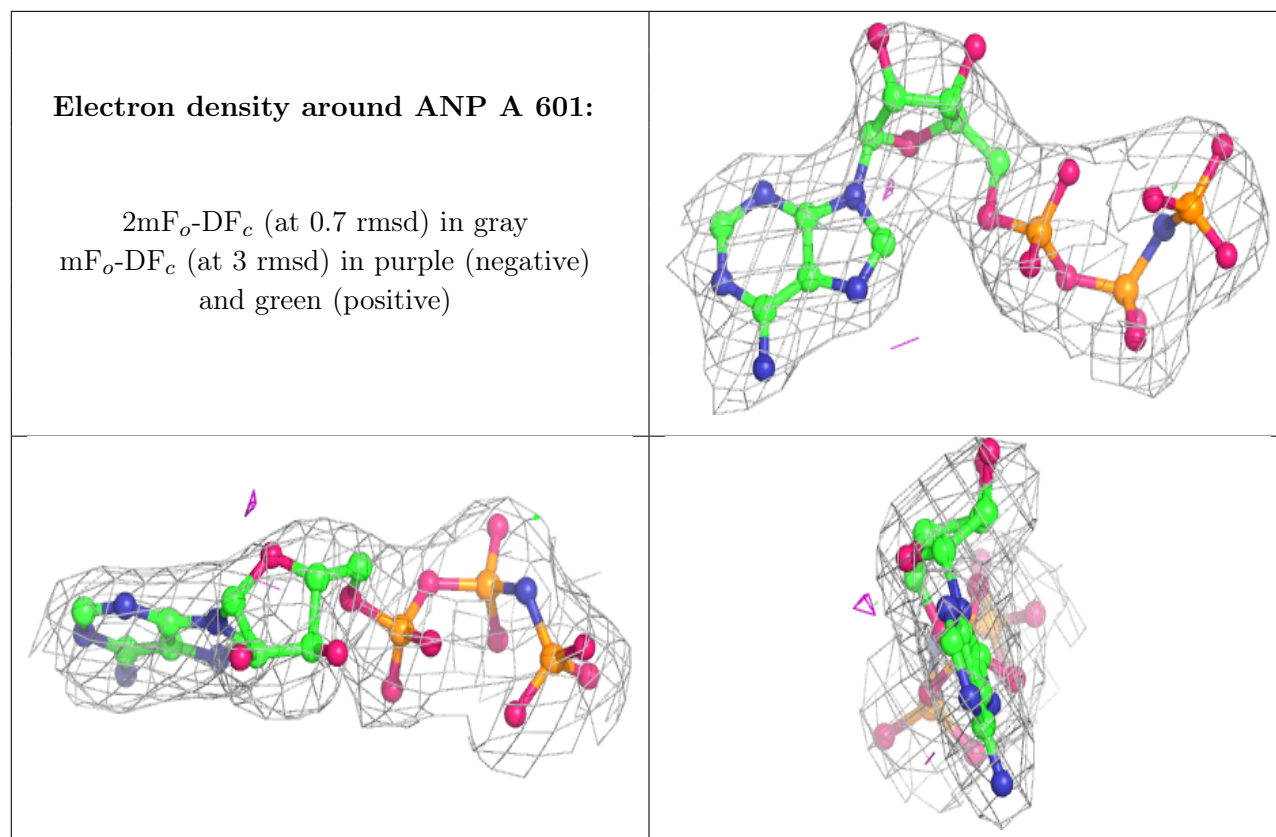
Mol	Type	Chain	Res	Atoms	RSCC	RSR	B-factors(\AA^2)	Q<0.9
3	MG	A	602	1/1	0.77	0.30	61,61,61,61	0
4	SUC	A	604	23/23	0.88	0.23	47,67,74,79	0
3	MG	A	603	1/1	0.92	0.09	69,69,69,69	0
2	ANP	A	601	31/31	0.95	0.15	28,50,72,75	0

The following is a graphical depiction of the model fit to experimental electron density of all instances of the Ligand of Interest. In addition, ligands with molecular weight > 250 and outliers as shown on the geometry validation Tables will also be included. Each fit is shown from different orientation to approximate a three-dimensional view.

Electron density around SUC A 604:

$2mF_o-DF_c$ (at 0.7 rmsd) in gray
 mF_o-DF_c (at 3 rmsd) in purple (negative)
and green (positive)





6.5 Other polymers [i](#)

There are no such residues in this entry.