



# Full wwPDB X-ray Structure Validation Report ⓘ

Mar 8, 2018 – 09:20 pm GMT

PDB ID : 4JSI  
Title : Structure of rat neuronal nitric oxide synthase heme domain in complex with 6-((3-(((3-fluorophenethyl)amino)methyl)phenoxy)methyl)-4-methylpyridin-2-amine  
Authors : Li, H.; Poulos, T.L.  
Deposited on : 2013-03-22  
Resolution : 2.09 Å(reported)

This is a Full wwPDB X-ray Structure Validation Report for a publicly released PDB entry.

We welcome your comments at [validation@mail.wwpdb.org](mailto:validation@mail.wwpdb.org)

A user guide is available at

<https://www.wwpdb.org/validation/2017/XrayValidationReportHelp>

with specific help available everywhere you see the ⓘ symbol.

---

The following versions of software and data (see [references ⓘ](#)) were used in the production of this report:

MolProbity : 4.02b-467  
Mogul : 1.7.3 (157068), CSD as539be (2018)  
Xtriage (Phenix) : 1.13  
EDS : trunk30967  
Percentile statistics : 20171227.v01 (using entries in the PDB archive December 27th 2017)  
Refmac : 5.8.0158  
CCP4 : 7.0 (Gargrove)  
Ideal geometry (proteins) : Engh & Huber (2001)  
Ideal geometry (DNA, RNA) : Parkinson et al. (1996)  
Validation Pipeline (wwPDB-VP) : trunk30967

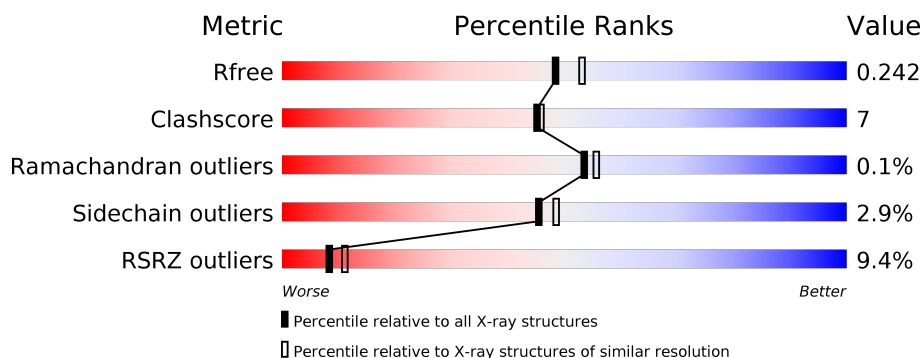
# 1 Overall quality at a glance

The following experimental techniques were used to determine the structure:

*X-RAY DIFFRACTION*

The reported resolution of this entry is 2.09 Å.

Percentile scores (ranging between 0-100) for global validation metrics of the entry are shown in the following graphic. The table shows the number of entries on which the scores are based.



Metric	Whole archive (#Entries)	Similar resolution (#Entries, resolution range(Å))
$R_{free}$	111664	4608 (2.10-2.10)
Clashscore	122126	5109 (2.10-2.10)
Ramachandran outliers	120053	5059 (2.10-2.10)
Sidechain outliers	120020	5060 (2.10-2.10)
RSRZ outliers	108989	4497 (2.10-2.10)

The table below summarises the geometric issues observed across the polymeric chains and their fit to the electron density. The red, orange, yellow and green segments on the lower bar indicate the fraction of residues that contain outliers for  $\geq 3$ , 2, 1 and 0 types of geometric quality criteria. A grey segment represents the fraction of residues that are not modelled. The numeric value for each fraction is indicated below the corresponding segment, with a dot representing fractions  $\leq 5\%$ . The upper red bar (where present) indicates the fraction of residues that have poor fit to the electron density. The numeric value is given above the bar.

Mol	Chain	Length	Quality of chain
1	A	422	<div> <div>13%</div> <div> <div></div> <div>76%</div> <div>18%</div> <div>• •</div> </div> </div>
1	B	422	<div> <div>5%</div> <div> <div></div> <div>84%</div> <div>13%</div> <div>• •</div> </div> </div>

## 2 Entry composition [i](#)

There are 7 unique types of molecules in this entry. The entry contains 7072 atoms, of which 0 are hydrogens and 0 are deuteriums.

In the tables below, the ZeroOcc column contains the number of atoms modelled with zero occupancy, the AltConf column contains the number of residues with at least one atom in alternate conformation and the Trace column contains the number of residues modelled with at most 2 atoms.

- Molecule 1 is a protein called Nitric oxide synthase, brain.

Mol	Chain	Residues	Atoms					ZeroOcc	AltConf	Trace
1	A	407	Total	C	N	O	S	0	1	0
			3319	2125	566	607	21			
1	B	411	Total	C	N	O	S	0	1	0
			3348	2142	574	610	22			

- Molecule 2 is PROTOPORPHYRIN IX CONTAINING FE (three-letter code: HEM) (formula:  $C_{34}H_{32}FeN_4O_4$ ).



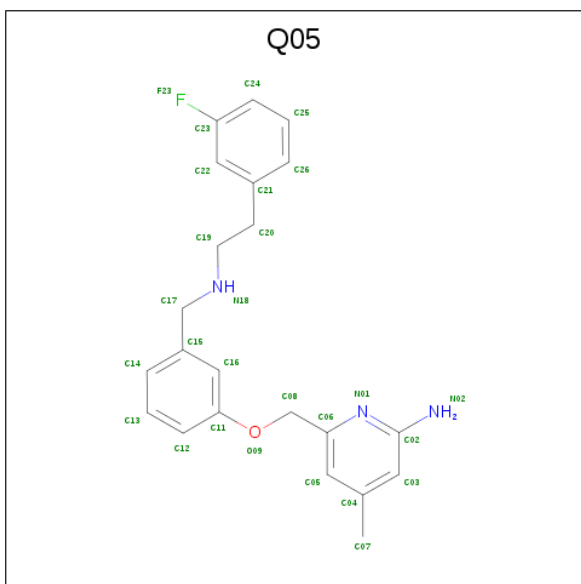
Mol	Chain	Residues	Atoms					ZeroOcc	AltConf
2	A	1	Total	C	Fe	N	O	0	0
			43	34	1	4	4		
2	B	1	Total	C	Fe	N	O	0	0
			43	34	1	4	4		

- Molecule 3 is 5,6,7,8-TETRAHYDROBIOPTERIN (three-letter code: H4B) (formula:  $C_9H_{15}N_5O_3$ ).



Mol	Chain	Residues	Atoms				ZeroOcc	AltConf
3	A	1	Total	C	N	O	0	0
			17	9	5	3		
3	B	1	Total	C	N	O	0	0
			17	9	5	3		

- Molecule 4 is 6-{{3-({2-(3-fluorophenyl)ethyl}amino)methyl}phenoxy)methyl}-4-methylpyridin-2-amine (three-letter code: Q05) (formula:  $C_{22}H_{24}FN_3O$ ).



Mol	Chain	Residues	Atoms					ZeroOcc	AltConf
4	A	1	Total	C	F	N	O	0	0
			27	22	1	3	1		

*Continued on next page...*

Continued from previous page...

Mol	Chain	Residues	Atoms					ZeroOcc	AltConf
4	B	1	Total	C	F	N	O	0	0
			27	22	1	3	1		

- Molecule 5 is ACETATE ION (three-letter code: ACT) (formula:  $C_2H_3O_2$ ).



Mol	Chain	Residues	Atoms			ZeroOcc	AltConf
5	A	1	Total	C	O	0	0
			4	2	2		
5	B	1	Total	C	O	0	0
			4	2	2		

- Molecule 6 is ZINC ION (three-letter code: ZN) (formula:  $Zn$ ).

Mol	Chain	Residues	Atoms		ZeroOcc	AltConf
6	A	1	Total	Zn	0	0
			1	1		

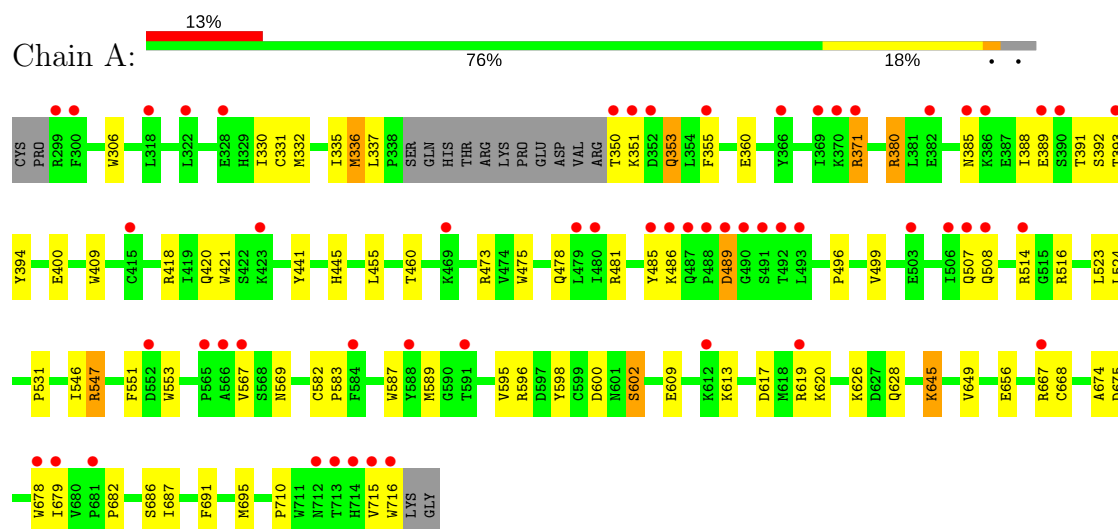
- Molecule 7 is water.

Mol	Chain	Residues	Atoms		ZeroOcc	AltConf
7	A	95	Total	O	0	0
			95	95		
7	B	127	Total	O	0	0
			127	127		

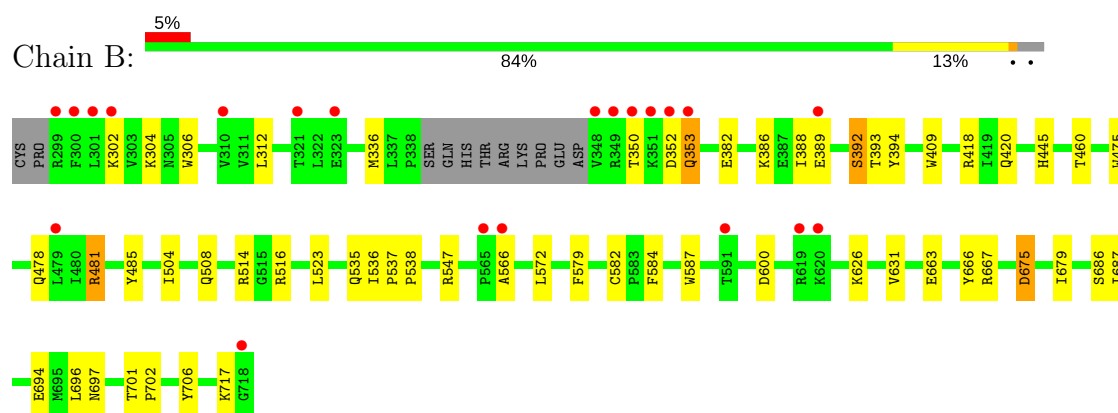
### 3 Residue-property plots

These plots are drawn for all protein, RNA and DNA chains in the entry. The first graphic for a chain summarises the proportions of the various outlier classes displayed in the second graphic. The second graphic shows the sequence view annotated by issues in geometry and electron density. Residues are color-coded according to the number of geometric quality criteria for which they contain at least one outlier: green = 0, yellow = 1, orange = 2 and red = 3 or more. A red dot above a residue indicates a poor fit to the electron density ( $RSRZ > 2$ ). Stretches of 2 or more consecutive residues without any outlier are shown as a green connector. Residues present in the sample, but not in the model, are shown in grey.

- Molecule 1: Nitric oxide synthase, brain



- Molecule 1: Nitric oxide synthase, brain



## 4 Data and refinement statistics

Property	Value	Source
Space group	P 21 21 21	Depositor
Cell constants a, b, c, $\alpha$ , $\beta$ , $\gamma$	51.60Å 110.78Å 164.56Å 90.00° 90.00° 90.00°	Depositor
Resolution (Å)	40.70 – 2.09 40.66 – 2.09	Depositor EDS
% Data completeness (in resolution range)	99.0 (40.70-2.09) 99.1 (40.66-2.09)	Depositor EDS
$R_{merge}$	0.07	Depositor
$R_{sym}$	0.07	Depositor
$\langle I/\sigma(I) \rangle$ <sup>1</sup>	2.17 (at 2.08Å)	Xtriage
Refinement program	REFMAC	Depositor
R, $R_{free}$	0.193 , 0.241 0.192 , 0.242	Depositor DCC
$R_{free}$ test set	2792 reflections (4.93%)	wwPDB-VP
Wilson B-factor (Å <sup>2</sup> )	35.0	Xtriage
Anisotropy	0.839	Xtriage
Bulk solvent $k_{sol}$ (e/Å <sup>3</sup> ), $B_{sol}$ (Å <sup>2</sup> )	0.38 , 50.9	EDS
L-test for twinning <sup>2</sup>	$\langle  L  \rangle = 0.49$ , $\langle L^2 \rangle = 0.32$	Xtriage
Estimated twinning fraction	No twinning to report.	Xtriage
$F_o, F_c$ correlation	0.96	EDS
Total number of atoms	7072	wwPDB-VP
Average B, all atoms (Å <sup>2</sup> )	50.0	wwPDB-VP

Xtriage's analysis on translational NCS is as follows: *The largest off-origin peak in the Patterson function is 4.91% of the height of the origin peak. No significant pseudotranslation is detected.*

<sup>1</sup>Intensities estimated from amplitudes.

<sup>2</sup>Theoretical values of  $\langle |L| \rangle$ ,  $\langle L^2 \rangle$  for acentric reflections are 0.5, 0.333 respectively for untwinned datasets, and 0.375, 0.2 for perfectly twinned datasets.

## 5 Model quality [i](#)

### 5.1 Standard geometry [i](#)

Bond lengths and bond angles in the following residue types are not validated in this section: HEM, ZN, Q05, H4B, ACT

The Z score for a bond length (or angle) is the number of standard deviations the observed value is removed from the expected value. A bond length (or angle) with  $|Z| > 5$  is considered an outlier worth inspection. RMSZ is the root-mean-square of all Z scores of the bond lengths (or angles).

Mol	Chain	Bond lengths		Bond angles	
		RMSZ	$\# Z  > 5$	RMSZ	$\# Z  > 5$
1	A	0.60	1/3415 (0.0%)	0.70	0/4633
1	B	0.73	0/3444	0.79	3/4669 (0.1%)
All	All	0.67	1/6859 (0.0%)	0.75	3/9302 (0.0%)

All (1) bond length outliers are listed below:

Mol	Chain	Res	Type	Atoms	Z	Observed(Å)	Ideal(Å)
1	A	441	TYR	CG-CD2	5.24	1.46	1.39

All (3) bond angle outliers are listed below:

Mol	Chain	Res	Type	Atoms	Z	Observed(°)	Ideal(°)
1	B	600	ASP	CB-CG-OD2	5.90	123.61	118.30
1	B	675	ASP	CB-CG-OD1	5.66	123.39	118.30
1	B	675	ASP	CB-CG-OD2	-5.34	113.50	118.30

There are no chirality outliers.

There are no planarity outliers.

### 5.2 Too-close contacts [i](#)

In the following table, the Non-H and H(model) columns list the number of non-hydrogen atoms and hydrogen atoms in the chain respectively. The H(added) column lists the number of hydrogen atoms added and optimized by MolProbity. The Clashes column lists the number of clashes within the asymmetric unit, whereas Symm-Clashes lists symmetry related clashes.

Mol	Chain	Non-H	H(model)	H(added)	Clashes	Symm-Clashes
1	A	3319	0	3227	55	0
1	B	3348	0	3264	44	0

*Continued on next page...*



*Continued from previous page...*

Mol	Chain	Non-H	H(model)	H(added)	Clashes	Symm-Clashes
2	A	43	0	30	3	0
2	B	43	0	30	8	0
3	A	17	0	15	0	0
3	B	17	0	15	0	0
4	A	27	0	24	4	0
4	B	27	0	24	2	0
5	A	4	0	3	0	0
5	B	4	0	3	0	0
6	A	1	0	0	0	0
7	A	95	0	0	0	0
7	B	127	0	0	4	0
All	All	7072	0	6635	94	0

The all-atom clashscore is defined as the number of clashes found per 1000 atoms (including hydrogen atoms). The all-atom clashscore for this structure is 7.

All (94) close contacts within the same asymmetric unit are listed below, sorted by their clash magnitude.

Atom-1	Atom-2	Interatomic distance (Å)	Clash overlap (Å)
1:A:337:LEU:HD21	4:A:803:Q05:H2	1.60	0.82
1:A:371:ARG:CG	1:A:371:ARG:HH21	2.01	0.74
1:A:478:GLN:HB2	1:A:481:ARG:HG3	1.70	0.72
1:B:536:ILE:HG13	7:B:921:HOH:O	1.89	0.71
1:A:380:ARG:HD3	1:A:400:GLU:OE1	1.91	0.70
1:A:371:ARG:HG3	1:A:371:ARG:HH21	1.58	0.69
1:B:350:THR:HG22	1:B:352:ASP:H	1.60	0.66
1:B:353:GLN:H	1:B:353:GLN:HE21	1.46	0.62
1:B:504:ILE:O	1:B:508:GLN:HG2	2.01	0.60
1:A:596:ARG:NH2	1:A:600:ASP:OD2	2.33	0.58
2:B:801:HEM:C1C	4:B:803:Q05:H25	2.37	0.58
1:B:508:GLN:NE2	7:B:1014:HOH:O	2.38	0.57
1:A:330:ILE:HD11	1:B:696:LEU:HB3	1.87	0.56
1:A:485:TYR:HB3	1:A:514:ARG:NH1	2.20	0.56
1:B:485:TYR:CE1	1:B:514:ARG:HA	2.42	0.55
1:B:475:TRP:HB2	1:B:523:LEU:HB3	1.89	0.55
1:B:535:GLN:HG3	7:B:1015:HOH:O	2.07	0.54
1:A:626:LYS:HB3	1:B:687:ILE:HD12	1.90	0.54
1:A:371:ARG:CG	1:A:371:ARG:NH2	2.66	0.53
1:A:628:GLN:HG3	1:B:631:VAL:HG11	1.91	0.52
1:A:455:LEU:HD12	1:A:587:TRP:CB	2.41	0.51
1:A:455:LEU:HD12	1:A:587:TRP:HB3	1.91	0.51

*Continued on next page...*

*Continued from previous page...*

Atom-1	Atom-2	Interatomic distance (Å)	Clash overlap (Å)
1:B:675:ASP:O	1:B:679:ILE:HG12	2.10	0.51
1:A:675:ASP:O	1:A:679:ILE:HG12	2.11	0.51
1:B:584:PHE:CD1	2:B:801:HEM:HAC	2.45	0.51
2:A:801:HEM:HHC	2:A:801:HEM:HBB2	1.93	0.51
1:B:353:GLN:H	1:B:353:GLN:NE2	2.09	0.50
1:B:587:TRP:H	2:B:801:HEM:HAB	1.76	0.50
1:A:337:LEU:CD2	4:A:803:Q05:H2	2.38	0.50
1:A:567:VAL:HG21	4:A:803:Q05:C12	2.42	0.50
1:A:460:THR:O	1:A:583:PRO:HD2	2.13	0.49
1:A:445:HIS:C	1:A:445:HIS:CD2	2.86	0.49
1:B:386:LYS:O	1:B:389:GLU:HG2	2.12	0.49
1:A:393:THR:OG1	1:A:394:TYR:N	2.47	0.48
1:B:478:GLN:HB2	1:B:481:ARG:HG3	1.95	0.48
1:B:706:TYR:OH	2:B:801:HEM:O1D	2.19	0.48
1:A:486:LYS:HD2	1:A:499:VAL:HG11	1.94	0.47
1:B:701:THR:HA	1:B:702:PRO:C	2.35	0.47
1:A:351:LYS:NZ	1:A:389:GLU:O	2.43	0.47
1:A:551:PHE:HB3	1:A:553:TRP:CE2	2.48	0.47
1:A:674:ALA:HB3	1:A:695:MET:HB3	1.96	0.47
1:B:409:TRP:CD2	2:B:801:HEM:HBC2	2.49	0.47
1:A:547:ARG:HD3	1:A:547:ARG:H	1.80	0.47
1:A:682:PRO:HB2	1:B:686:SER:HB3	1.98	0.46
1:B:388:ILE:O	1:B:392:SER:HA	2.16	0.46
1:B:516:ARG:HD2	7:B:1011:HOH:O	2.15	0.46
1:A:332:MET:HB3	1:A:335:ILE:HG13	1.97	0.46
1:A:595:VAL:CG1	1:B:686:SER:OG	2.64	0.46
1:A:667:ARG:NH1	1:A:668:CYS:SG	2.89	0.45
1:B:445:HIS:CD2	1:B:445:HIS:C	2.90	0.45
1:A:645:LYS:HB2	1:A:645:LYS:HE3	1.69	0.45
1:B:566:ALA:HA	1:B:584:PHE:O	2.17	0.45
1:A:617:ASP:OD2	1:A:619:ARG:HB2	2.17	0.45
1:B:302:LYS:HE3	1:B:302:LYS:HB2	1.52	0.44
1:A:353:GLN:H	1:A:353:GLN:NE2	2.16	0.44
1:A:496:PRO:HB2	1:A:602:SER:O	2.17	0.44
1:A:306:TRP:CD1	1:B:336:MET:HE2	2.53	0.44
2:B:801:HEM:HHB	2:B:801:HEM:HAD2	1.81	0.44
1:A:391:THR:O	1:A:392:SER:OG	2.31	0.43
1:A:524:LEU:O	1:A:531:PRO:HA	2.18	0.43
1:A:473:ARG:NH2	1:A:710:PRO:HD3	2.32	0.43
1:A:351:LYS:HE2	1:A:392:SER:HB3	2.00	0.43
1:B:312:LEU:HB3	1:B:666:TYR:CD2	2.53	0.43

*Continued on next page...*

*Continued from previous page...*

Atom-1	Atom-2	Interatomic distance (Å)	Clash overlap (Å)
1:B:706:TYR:OH	4:B:803:Q05:H5	2.18	0.43
1:B:537:PRO:HA	1:B:538:PRO:HD3	1.92	0.43
1:A:678:TRP:CE3	2:A:801:HEM:HBA2	2.53	0.43
1:B:418:ARG:C	1:B:420:GLN:N	2.73	0.43
1:A:350:THR:N	1:A:353:GLN:HE22	2.17	0.42
1:B:460:THR:O	1:B:582:CYS:HA	2.19	0.42
1:B:572:LEU:HB3	1:B:579:PHE:HB2	2.00	0.42
1:B:409:TRP:CH2	2:B:801:HEM:HMC3	2.54	0.42
1:A:409:TRP:CE3	1:A:421:TRP:HA	2.54	0.42
1:A:336:MET:HE3	1:A:678:TRP:HZ2	1.84	0.42
1:B:584:PHE:CD1	2:B:801:HEM:CAC	3.03	0.42
1:A:336:MET:HG3	1:B:306:TRP:NE1	2.35	0.42
1:A:337:LEU:HD21	4:A:803:Q05:C25	2.42	0.42
1:A:686:SER:HA	1:A:691:PHE:CG	2.54	0.42
1:B:393:THR:OG1	1:B:394:TYR:N	2.52	0.42
1:A:460:THR:O	1:A:582:CYS:HA	2.20	0.42
1:A:546:ILE:HG13	1:A:598:TYR:OH	2.20	0.41
2:A:801:HEM:HAD2	2:A:801:HEM:HHA	1.89	0.41
1:A:687:ILE:HD12	1:B:626:LYS:HB3	2.02	0.41
1:B:478:GLN:HA	1:B:566:ALA:O	2.21	0.41
1:A:508:GLN:OE1	1:A:716:TRP:CH2	2.75	0.41
1:B:302:LYS:HA	1:B:312:LEU:O	2.21	0.41
1:B:304:LYS:O	1:B:694:GLU:HG3	2.21	0.41
1:A:388:ILE:O	1:A:392:SER:HA	2.21	0.40
1:A:589:MET:HA	1:A:649:VAL:O	2.20	0.40
1:A:609:GLU:O	1:A:613:LYS:HG2	2.21	0.40
1:A:355:PHE:CE1	1:A:385:ASN:HB2	2.55	0.40
1:A:418:ARG:C	1:A:420:GLN:N	2.74	0.40
1:A:475:TRP:HB2	1:A:523:LEU:HB3	2.03	0.40
1:B:663:GLU:HB3	1:B:667:ARG:NH1	2.37	0.40
1:A:331:CYS:HB3	1:B:697:ASN:HB3	2.03	0.40

There are no symmetry-related clashes.

## 5.3 Torsion angles

### 5.3.1 Protein backbone

In the following table, the Percentiles column shows the percent Ramachandran outliers of the chain as a percentile score with respect to all X-ray entries followed by that with respect to entries of similar resolution.

The Analysed column shows the number of residues for which the backbone conformation was analysed, and the total number of residues.

Mol	Chain	Analysed	Favoured	Allowed	Outliers	Percentiles	
1	A	404/422 (96%)	388 (96%)	15 (4%)	1 (0%)	49	51
1	B	408/422 (97%)	392 (96%)	16 (4%)	0	100	100
All	All	812/844 (96%)	780 (96%)	31 (4%)	1 (0%)	53	55

All (1) Ramachandran outliers are listed below:

Mol	Chain	Res	Type
1	A	489	ASP

### 5.3.2 Protein sidechains ⓘ

In the following table, the Percentiles column shows the percent sidechain outliers of the chain as a percentile score with respect to all X-ray entries followed by that with respect to entries of similar resolution.

The Analysed column shows the number of residues for which the sidechain conformation was analysed, and the total number of residues.

Mol	Chain	Analysed	Rotameric	Outliers	Percentiles	
1	A	364/377 (97%)	349 (96%)	15 (4%)	33	33
1	B	367/377 (97%)	361 (98%)	6 (2%)	65	72
All	All	731/754 (97%)	710 (97%)	21 (3%)	45	48

All (21) residues with a non-rotameric sidechain are listed below:

Mol	Chain	Res	Type
1	A	336	MET
1	A	353	GLN
1	A	360	GLU
1	A	371	ARG
1	A	380	ARG
1	A	489	ASP
1	A	507	GLN
1	A	516	ARG
1	A	547	ARG
1	A	569	ASN
1	A	602	SER
1	A	620	LYS

*Continued on next page...*

*Continued from previous page...*

Mol	Chain	Res	Type
1	A	645	LYS
1	A	656	GLU
1	A	715	VAL
1	B	353	GLN
1	B	382	GLU
1	B	392	SER
1	B	481	ARG
1	B	547	ARG
1	B	717	LYS

Some sidechains can be flipped to improve hydrogen bonding and reduce clashes. All (15) such sidechains are listed below:

Mol	Chain	Res	Type
1	A	317	HIS
1	A	436	HIS
1	A	454	ASN
1	A	527	ASN
1	A	569	ASN
1	A	642	GLN
1	A	697	ASN
1	B	364	GLN
1	B	385	ASN
1	B	454	ASN
1	B	535	GLN
1	B	601	ASN
1	B	605	ASN
1	B	642	GLN
1	B	697	ASN

### 5.3.3 RNA ⓘ

There are no RNA molecules in this entry.

## 5.4 Non-standard residues in protein, DNA, RNA chains ⓘ

There are no non-standard protein/DNA/RNA residues in this entry.

## 5.5 Carbohydrates ⓘ

There are no carbohydrates in this entry.

## 5.6 Ligand geometry

Of 9 ligands modelled in this entry, 1 is monoatomic - leaving 8 for Mogul analysis.

In the following table, the Counts columns list the number of bonds (or angles) for which Mogul statistics could be retrieved, the number of bonds (or angles) that are observed in the model and the number of bonds (or angles) that are defined in the Chemical Component Dictionary. The Link column lists molecule types, if any, to which the group is linked. The Z score for a bond length (or angle) is the number of standard deviations the observed value is removed from the expected value. A bond length (or angle) with  $|Z| > 2$  is considered an outlier worth inspection. RMSZ is the root-mean-square of all Z scores of the bond lengths (or angles).

Mol	Type	Chain	Res	Link	Bond lengths			Bond angles		
					Counts	RMSZ	# $ Z  > 2$	Counts	RMSZ	# $ Z  > 2$
2	HEM	A	801	1	27,50,50	0.99	1 (3%)	17,82,82	2.10	4 (23%)
3	H4B	A	802	-	15,18,18	0.74	0	11,26,26	2.55	5 (45%)
4	Q05	A	803	-	29,29,29	0.63	0	37,38,38	1.43	7 (18%)
5	ACT	A	804	-	1,3,3	1.77	0	0,3,3	0.00	-
2	HEM	B	801	1	27,50,50	1.02	0	17,82,82	2.10	4 (23%)
3	H4B	B	802	-	15,18,18	1.20	2 (13%)	11,26,26	2.77	5 (45%)
4	Q05	B	803	-	29,29,29	0.75	0	37,38,38	1.54	6 (16%)
5	ACT	B	804	-	1,3,3	1.20	0	0,3,3	0.00	-

In the following table, the Chirals column lists the number of chiral outliers, the number of chiral centers analysed, the number of these observed in the model and the number defined in the Chemical Component Dictionary. Similar counts are reported in the Torsion and Rings columns. '-' means no outliers of that kind were identified.

Mol	Type	Chain	Res	Link	Chirals	Torsions	Rings
2	HEM	A	801	1	-	0/6/54/54	0/0/8/8
3	H4B	A	802	-	-	0/8/17/17	0/2/2/2
4	Q05	A	803	-	-	0/12/12/12	0/3/3/3
5	ACT	A	804	-	-	0/0/0/0	0/0/0/0
2	HEM	B	801	1	-	0/6/54/54	0/0/8/8
3	H4B	B	802	-	-	0/8/17/17	0/2/2/2
4	Q05	B	803	-	-	0/12/12/12	0/3/3/3
5	ACT	B	804	-	-	0/0/0/0	0/0/0/0

All (3) bond length outliers are listed below:

Mol	Chain	Res	Type	Atoms	Z	Observed(Å)	Ideal(Å)
2	A	801	HEM	C3B-C2B	-3.41	1.35	1.40
3	B	802	H4B	C2-N2	2.42	1.38	1.33
3	B	802	H4B	C4-N3	2.59	1.37	1.33

All (31) bond angle outliers are listed below:

Mol	Chain	Res	Type	Atoms	Z	Observed(°)	Ideal(°)
2	A	801	HEM	CAD-CBD-CGD	-5.09	103.97	112.66
3	B	802	H4B	N3-C2-N1	-4.30	118.60	125.43
3	A	802	H4B	N3-C2-N1	-3.85	119.30	125.43
4	A	803	Q05	C15-C17-N18	-3.47	104.01	112.90
4	B	803	Q05	C24-C23-C22	-3.31	118.94	123.29
4	B	803	Q05	C05-C06-N01	-3.17	119.57	122.91
2	A	801	HEM	CAA-C2A-C3A	-3.00	120.44	129.00
4	A	803	Q05	C05-C06-N01	-2.69	120.08	122.91
4	A	803	Q05	C24-C23-C22	-2.62	119.84	123.29
4	B	803	Q05	C07-C04-C05	-2.21	117.73	120.96
2	B	801	HEM	CAD-CBD-CGD	-2.16	108.96	112.66
2	B	801	HEM	C3B-C4B-NB	-2.09	106.50	109.21
4	B	803	Q05	C17-N18-C19	2.07	120.67	113.39
2	B	801	HEM	CMB-C2B-C3B	2.18	128.84	124.88
4	B	803	Q05	C08-O09-C11	2.20	123.16	117.64
4	A	803	Q05	C21-C22-C23	2.33	120.90	118.79
4	A	803	Q05	C17-N18-C19	2.35	121.68	113.39
3	A	802	H4B	N2-C2-N3	2.49	121.16	117.25
4	A	803	Q05	C08-O09-C11	2.68	124.35	117.64
3	B	802	H4B	N2-C2-N3	2.81	121.66	117.25
2	A	801	HEM	CBD-CAD-C3D	2.85	117.91	112.47
3	B	802	H4B	C2-N1-C8A	3.28	121.86	114.50
3	A	802	H4B	C4-C4A-C8A	3.34	117.59	114.56
4	A	803	Q05	C02-N01-C06	3.51	120.64	118.17
2	A	801	HEM	C4C-C3C-C2C	3.52	109.35	106.90
3	A	802	H4B	C2-N1-C8A	3.55	122.47	114.50
3	A	802	H4B	C4-N3-C2	3.97	121.76	116.06
3	B	802	H4B	C4-N3-C2	4.25	122.18	116.06
4	B	803	Q05	C02-N01-C06	4.52	121.35	118.17
3	B	802	H4B	C4-C4A-C8A	4.54	118.67	114.56
2	B	801	HEM	CBD-CAD-C3D	6.46	124.79	112.47

There are no chirality outliers.

There are no torsion outliers.

There are no ring outliers.

4 monomers are involved in 16 short contacts:

Mol	Chain	Res	Type	Clashes	Symm-Clashes
2	A	801	HEM	3	0
4	A	803	Q05	4	0

*Continued on next page...*

*Continued from previous page...*

Mol	Chain	Res	Type	Clashes	Symm-Clashes
2	B	801	HEM	8	0
4	B	803	Q05	2	0

## 5.7 Other polymers [i](#)

There are no such residues in this entry.

## 5.8 Polymer linkage issues [i](#)

There are no chain breaks in this entry.



## 6 Fit of model and data

### 6.1 Protein, DNA and RNA chains

In the following table, the column labelled ‘#RSRZ > 2’ contains the number (and percentage) of RSRZ outliers, followed by percent RSRZ outliers for the chain as percentile scores relative to all X-ray entries and entries of similar resolution. The OWAB column contains the minimum, median, 95<sup>th</sup> percentile and maximum values of the occupancy-weighted average B-factor per residue. The column labelled ‘Q < 0.9’ lists the number of (and percentage) of residues with an average occupancy less than 0.9.

Mol	Chain	Analysed	<RSRZ>	#RSRZ>2	OWAB(Å <sup>2</sup> )	Q<0.9
1	A	407/422 (96%)	0.82	56 (13%) <b>3</b> <b>4</b>	28, 52, 84, 117	0
1	B	411/422 (97%)	0.36	21 (5%) 28 34	25, 42, 70, 104	0
All	All	818/844 (96%)	0.59	77 (9%) <b>8</b> <b>11</b>	25, 46, 81, 117	0

All (77) RSRZ outliers are listed below:

Mol	Chain	Res	Type	RSRZ
1	B	300	PHE	9.3
1	A	716	TRP	7.6
1	A	488	PRO	6.9
1	B	350	THR	6.1
1	B	348	VAL	5.7
1	A	715	VAL	5.6
1	A	352	ASP	5.0
1	A	350	THR	4.9
1	B	352	ASP	4.8
1	B	351	LYS	4.8
1	A	351	LYS	4.7
1	A	355	PHE	4.1
1	B	718	GLY	4.1
1	A	486	LYS	4.0
1	A	386	LYS	4.0
1	A	567	VAL	3.8
1	A	493	LEU	3.6
1	A	714	HIS	3.6
1	B	353	GLN	3.5
1	A	713	THR	3.4
1	A	490	GLY	3.4
1	A	300	PHE	3.3
1	A	491	SER	3.3
1	A	299	ARG	3.2

*Continued on next page...*

*Continued from previous page...*

Mol	Chain	Res	Type	RSRZ
1	A	390	SER	3.2
1	A	492	THR	3.1
1	A	667	ARG	3.1
1	B	619	ARG	3.1
1	A	508	GLN	3.0
1	A	480	ILE	3.0
1	A	385	ASN	2.9
1	B	301	LEU	2.9
1	A	503	GLU	2.9
1	B	321	THR	2.9
1	B	299	ARG	2.9
1	B	349	ARG	2.8
1	A	507	GLN	2.8
1	A	389	GLU	2.8
1	B	479	LEU	2.8
1	A	712	ASN	2.8
1	A	487	GLN	2.7
1	A	485	TYR	2.7
1	A	382	GLU	2.7
1	A	678	TRP	2.7
1	A	514	ARG	2.7
1	A	371	ARG	2.6
1	B	620	LYS	2.6
1	A	565	PRO	2.5
1	A	369	ILE	2.5
1	A	370	LYS	2.5
1	A	322	LEU	2.5
1	A	393	THR	2.4
1	A	415	CYS	2.4
1	A	366	TYR	2.4
1	A	679	ILE	2.4
1	A	489	ASP	2.4
1	A	328	GLU	2.4
1	B	389	GLU	2.4
1	A	612	LYS	2.4
1	A	681	PRO	2.3
1	A	588	TYR	2.3
1	A	423	LYS	2.3
1	A	584	PHE	2.3
1	A	591	THR	2.3
1	B	310	VAL	2.2
1	A	506	ILE	2.2

*Continued on next page...*

*Continued from previous page...*

Mol	Chain	Res	Type	RSRZ
1	A	566	ALA	2.2
1	A	479	LEU	2.1
1	B	323	GLU	2.1
1	A	552	ASP	2.1
1	A	619	ARG	2.1
1	A	318	LEU	2.1
1	B	591	THR	2.1
1	B	302	LYS	2.0
1	B	565	PRO	2.0
1	B	566	ALA	2.0
1	A	469	LYS	2.0

## 6.2 Non-standard residues in protein, DNA, RNA chains [i](#)

There are no non-standard protein/DNA/RNA residues in this entry.

## 6.3 Carbohydrates [i](#)

There are no carbohydrates in this entry.

## 6.4 Ligands [i](#)

In the following table, the Atoms column lists the number of modelled atoms in the group and the number defined in the chemical component dictionary. The B-factors column lists the minimum, median, 95<sup>th</sup> percentile and maximum values of B factors of atoms in the group. The column labelled 'Q<0.9' lists the number of atoms with occupancy less than 0.9.

Mol	Type	Chain	Res	Atoms	RSCC	RSR	B-factors(Å <sup>2</sup> )	Q<0.9
4	Q05	A	803	27/27	0.91	0.32	36,69,102,103	0
4	Q05	B	803	27/27	0.92	0.24	31,63,101,104	0
3	H4B	A	802	17/17	0.95	0.17	45,49,53,55	0
3	H4B	B	802	17/17	0.95	0.17	40,44,50,50	0
2	HEM	A	801	43/43	0.97	0.22	31,36,53,56	0
2	HEM	B	801	43/43	0.98	0.17	30,32,49,58	0
5	ACT	B	804	4/4	0.98	0.09	46,46,46,46	0
5	ACT	A	804	4/4	0.98	0.21	58,62,62,64	0
6	ZN	A	805	1/1	1.00	0.11	44,44,44,44	0

## 6.5 Other polymers [i](#)

There are no such residues in this entry.