



# Full wwPDB X-ray Structure Validation Report ⓘ

Mar 8, 2018 – 05:05 pm GMT

PDB ID : 5K0S  
Title : Crystal structure of methionyl-tRNA synthetase MetRS from *Brucella melitensis* in complex with inhibitor Chem 1312  
Authors : Seattle Structural Genomics Center for Infectious Disease (SSGCID)  
Deposited on : 2016-05-17  
Resolution : 2.45 Å(reported)

This is a Full wwPDB X-ray Structure Validation Report for a publicly released PDB entry.

We welcome your comments at [validation@mail.wwpdb.org](mailto:validation@mail.wwpdb.org)

A user guide is available at

<https://www.wwpdb.org/validation/2017/XrayValidationReportHelp>

with specific help available everywhere you see the ⓘ symbol.

---

The following versions of software and data (see [references ⓘ](#)) were used in the production of this report:

MolProbity : 4.02b-467  
Mogul : 1.7.3 (157068), CSD as539be (2018)  
Xtriage (Phenix) : 1.13  
EDS : trunk30967  
Percentile statistics : 20171227.v01 (using entries in the PDB archive December 27th 2017)  
Refmac : 5.8.0158  
CCP4 : 7.0 (Gargrove)  
Ideal geometry (proteins) : Engh & Huber (2001)  
Ideal geometry (DNA, RNA) : Parkinson et al. (1996)  
Validation Pipeline (wwPDB-VP) : trunk30967

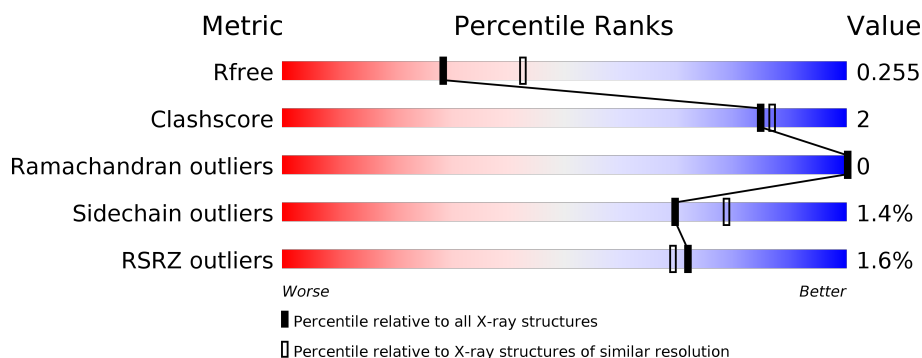
# 1 Overall quality at a glance

The following experimental techniques were used to determine the structure:

## *X-RAY DIFFRACTION*

The reported resolution of this entry is 2.45 Å.

Percentile scores (ranging between 0-100) for global validation metrics of the entry are shown in the following graphic. The table shows the number of entries on which the scores are based.



Metric	Whole archive (#Entries)	Similar resolution (#Entries, resolution range(Å))
$R_{free}$	111664	1259 (2.48-2.44)
Clashscore	122126	1323 (2.48-2.44)
Ramachandran outliers	120053	1314 (2.48-2.44)
Sidechain outliers	120020	1314 (2.48-2.44)
RSRZ outliers	108989	1238 (2.48-2.44)

The table below summarises the geometric issues observed across the polymeric chains and their fit to the electron density. The red, orange, yellow and green segments on the lower bar indicate the fraction of residues that contain outliers for  $\geq 3$ , 2, 1 and 0 types of geometric quality criteria. A grey segment represents the fraction of residues that are not modelled. The numeric value for each fraction is indicated below the corresponding segment, with a dot representing fractions  $\leq 5\%$ . The upper red bar (where present) indicates the fraction of residues that have poor fit to the electron density. The numeric value is given above the bar.

Mol	Chain	Length	Quality of chain
1	A	536	
1	B	536	
1	C	536	

## 2 Entry composition

There are 3 unique types of molecules in this entry. The entry contains 11763 atoms, of which 0 are hydrogens and 0 are deuteriums.

In the tables below, the ZeroOcc column contains the number of atoms modelled with zero occupancy, the AltConf column contains the number of residues with at least one atom in alternate conformation and the Trace column contains the number of residues modelled with at most 2 atoms.

- Molecule 1 is a protein called Methionine-tRNA ligase.

Mol	Chain	Residues	Atoms					ZeroOcc	AltConf	Trace
1	A	496	Total	C	N	O	S	0	0	0
			3826	2447	652	713	14			
1	B	485	Total	C	N	O	S	0	3	0
			3806	2435	655	702	14			
1	C	497	Total	C	N	O	S	0	1	0
			3837	2456	650	717	14			

There are 66 discrepancies between the modelled and reference sequences:

Chain	Residue	Modelled	Actual	Comment	Reference
A	-20	MET	-	initiating methionine	UNP P59078
A	-19	ALA	-	expression tag	UNP P59078
A	-18	HIS	-	expression tag	UNP P59078
A	-17	HIS	-	expression tag	UNP P59078
A	-16	HIS	-	expression tag	UNP P59078
A	-15	HIS	-	expression tag	UNP P59078
A	-14	HIS	-	expression tag	UNP P59078
A	-13	HIS	-	expression tag	UNP P59078
A	-12	MET	-	expression tag	UNP P59078
A	-11	GLY	-	expression tag	UNP P59078
A	-10	THR	-	expression tag	UNP P59078
A	-9	LEU	-	expression tag	UNP P59078
A	-8	GLU	-	expression tag	UNP P59078
A	-7	ALA	-	expression tag	UNP P59078
A	-6	GLN	-	expression tag	UNP P59078
A	-5	THR	-	expression tag	UNP P59078
A	-4	GLN	-	expression tag	UNP P59078
A	-3	GLY	-	expression tag	UNP P59078
A	-2	PRO	-	expression tag	UNP P59078
A	-1	GLY	-	expression tag	UNP P59078
A	0	SER	-	expression tag	UNP P59078
A	70	ASP	GLU	conflict	UNP P59078
B	-20	MET	-	initiating methionine	UNP P59078

*Continued on next page...*

*Continued from previous page...*

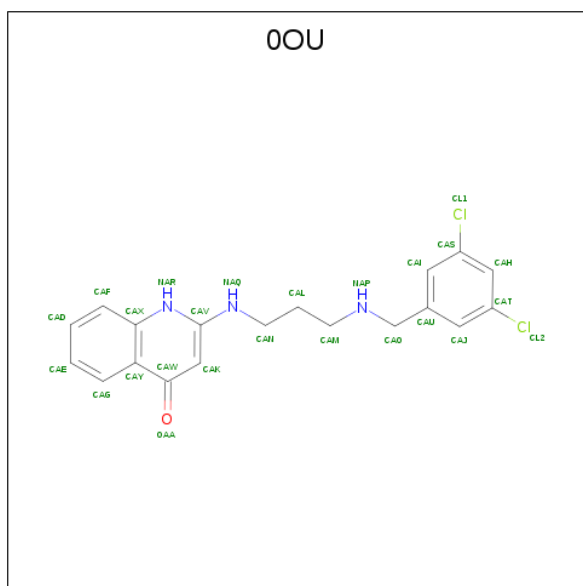
Chain	Residue	Modelled	Actual	Comment	Reference
B	-19	ALA	-	expression tag	UNP P59078
B	-18	HIS	-	expression tag	UNP P59078
B	-17	HIS	-	expression tag	UNP P59078
B	-16	HIS	-	expression tag	UNP P59078
B	-15	HIS	-	expression tag	UNP P59078
B	-14	HIS	-	expression tag	UNP P59078
B	-13	HIS	-	expression tag	UNP P59078
B	-12	MET	-	expression tag	UNP P59078
B	-11	GLY	-	expression tag	UNP P59078
B	-10	THR	-	expression tag	UNP P59078
B	-9	LEU	-	expression tag	UNP P59078
B	-8	GLU	-	expression tag	UNP P59078
B	-7	ALA	-	expression tag	UNP P59078
B	-6	GLN	-	expression tag	UNP P59078
B	-5	THR	-	expression tag	UNP P59078
B	-4	GLN	-	expression tag	UNP P59078
B	-3	GLY	-	expression tag	UNP P59078
B	-2	PRO	-	expression tag	UNP P59078
B	-1	GLY	-	expression tag	UNP P59078
B	0	SER	-	expression tag	UNP P59078
B	70	ASP	GLU	conflict	UNP P59078
C	-20	MET	-	initiating methionine	UNP P59078
C	-19	ALA	-	expression tag	UNP P59078
C	-18	HIS	-	expression tag	UNP P59078
C	-17	HIS	-	expression tag	UNP P59078
C	-16	HIS	-	expression tag	UNP P59078
C	-15	HIS	-	expression tag	UNP P59078
C	-14	HIS	-	expression tag	UNP P59078
C	-13	HIS	-	expression tag	UNP P59078
C	-12	MET	-	expression tag	UNP P59078
C	-11	GLY	-	expression tag	UNP P59078
C	-10	THR	-	expression tag	UNP P59078
C	-9	LEU	-	expression tag	UNP P59078
C	-8	GLU	-	expression tag	UNP P59078
C	-7	ALA	-	expression tag	UNP P59078
C	-6	GLN	-	expression tag	UNP P59078
C	-5	THR	-	expression tag	UNP P59078
C	-4	GLN	-	expression tag	UNP P59078
C	-3	GLY	-	expression tag	UNP P59078
C	-2	PRO	-	expression tag	UNP P59078
C	-1	GLY	-	expression tag	UNP P59078
C	0	SER	-	expression tag	UNP P59078

*Continued on next page...*

Continued from previous page...

Chain	Residue	Modelled	Actual	Comment	Reference
C	70	ASP	GLU	conflict	UNP P59078

- Molecule 2 is 2-({3-[(3,5-dichlorobenzyl)amino]propyl}amino)quinolin-4(1H)-one (three-letter code: 0OU) (formula: C<sub>19</sub>H<sub>19</sub>Cl<sub>2</sub>N<sub>3</sub>O).



Mol	Chain	Residues	Atoms					ZeroOcc	AltConf
2	A	1	Total	C	Cl	N	O	0	0
			25	19	2	3	1		
2	B	1	Total	C	Cl	N	O	0	0
			25	19	2	3	1		
2	C	1	Total	C	Cl	N	O	0	0
			25	19	2	3	1		

- Molecule 3 is water.

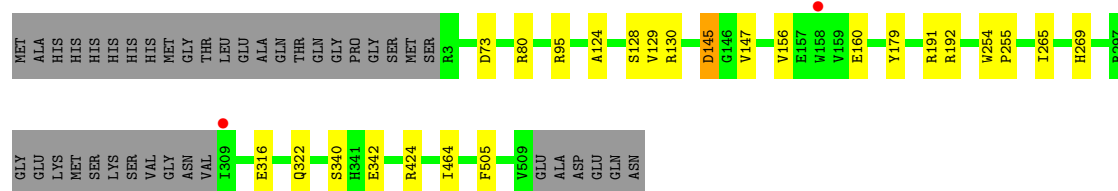
Mol	Chain	Residues	Atoms		ZeroOcc	AltConf
3	A	69	Total	O	0	0
			69	69		
3	B	113	Total	O	0	0
			113	113		
3	C	37	Total	O	0	0
			37	37		

### 3 Residue-property plots [i](#)


These plots are drawn for all protein, RNA and DNA chains in the entry. The first graphic for a chain summarises the proportions of the various outlier classes displayed in the second graphic. The second graphic shows the sequence view annotated by issues in geometry and electron density. Residues are color-coded according to the number of geometric quality criteria for which they contain at least one outlier: green = 0, yellow = 1, orange = 2 and red = 3 or more. A red dot above a residue indicates a poor fit to the electron density ( $RSRZ > 2$ ). Stretches of 2 or more consecutive residues without any outlier are shown as a green connector. Residues present in the sample, but not in the model, are shown in grey.

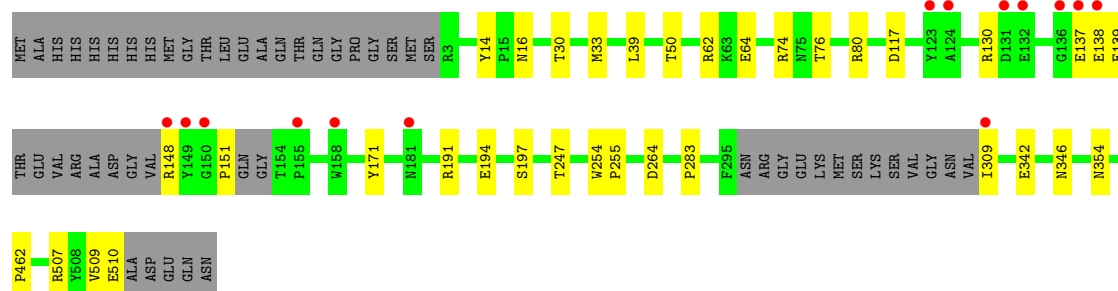
#### • Molecule 1: Methionine-tRNA ligase

Chain A: 




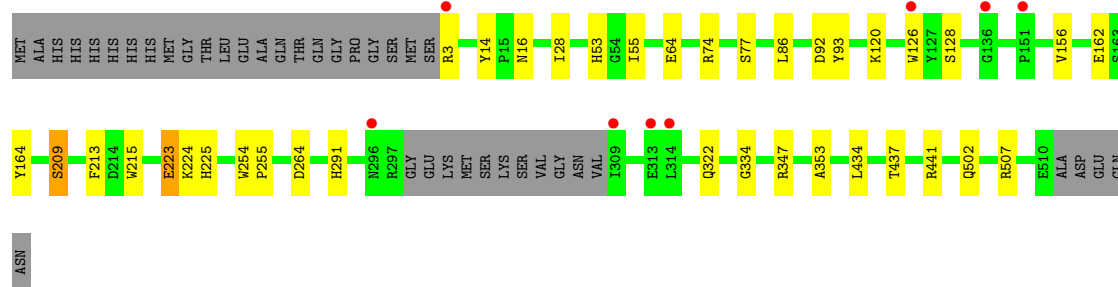
#### • Molecule 1: Methionine-tRNA ligase

Chain B: 



#### • Molecule 1: Methionine-tRNA ligase

Chain C: 



## 4 Data and refinement statistics

Property	Value	Source
Space group	P 1	Depositor
Cell constants a, b, c, $\alpha$ , $\beta$ , $\gamma$	45.27Å 99.74Å 104.63Å 110.58° 87.63° 99.91°	Depositor
Resolution (Å)	34.92 – 2.45 41.70 – 2.45	Depositor EDS
% Data completeness (in resolution range)	97.3 (34.92-2.45) 97.3 (41.70-2.45)	Depositor EDS
$R_{merge}$	0.06	Depositor
$R_{sym}$	(Not available)	Depositor
$\langle I/\sigma(I) \rangle$ <sup>1</sup>	2.38 (at 2.45Å)	Xtriage
Refinement program	PHENIX dev_2405	Depositor
R, $R_{free}$	0.210 , 0.256 0.210 , 0.255	Depositor DCC
$R_{free}$ test set	3029 reflections (5.01%)	wwPDB-VP
Wilson B-factor (Å <sup>2</sup> )	40.5	Xtriage
Anisotropy	0.033	Xtriage
Bulk solvent $k_{sol}$ (e/Å <sup>3</sup> ), $B_{sol}$ (Å <sup>2</sup> )	0.30 , 30.2	EDS
L-test for twinning <sup>2</sup>	$\langle  L  \rangle = 0.50$ , $\langle L^2 \rangle = 0.33$	Xtriage
Estimated twinning fraction	No twinning to report.	Xtriage
$F_o, F_c$ correlation	0.91	EDS
Total number of atoms	11763	wwPDB-VP
Average B, all atoms (Å <sup>2</sup> )	43.0	wwPDB-VP

Xtriage's analysis on translational NCS is as follows: *The largest off-origin peak in the Patterson function is 3.90% of the height of the origin peak. No significant pseudotranslation is detected.*

<sup>1</sup>Intensities estimated from amplitudes.

<sup>2</sup>Theoretical values of  $\langle |L| \rangle$ ,  $\langle L^2 \rangle$  for acentric reflections are 0.5, 0.333 respectively for untwinned datasets, and 0.375, 0.2 for perfectly twinned datasets.

## 5 Model quality [i](#)

### 5.1 Standard geometry [i](#)

Bond lengths and bond angles in the following residue types are not validated in this section: 0OU

The Z score for a bond length (or angle) is the number of standard deviations the observed value is removed from the expected value. A bond length (or angle) with  $|Z| > 5$  is considered an outlier worth inspection. RMSZ is the root-mean-square of all Z scores of the bond lengths (or angles).

Mol	Chain	Bond lengths		Bond angles	
		RMSZ	# Z  >5	RMSZ	# Z  >5
1	A	0.25	0/3929	0.42	0/5365
1	B	0.26	0/3915	0.42	0/5333
1	C	0.26	0/3942	0.42	0/5377
All	All	0.26	0/11786	0.42	0/16075

There are no bond length outliers.

There are no bond angle outliers.

There are no chirality outliers.

There are no planarity outliers.

### 5.2 Too-close contacts [i](#)

In the following table, the Non-H and H(model) columns list the number of non-hydrogen atoms and hydrogen atoms in the chain respectively. The H(added) column lists the number of hydrogen atoms added and optimized by MolProbity. The Clashes column lists the number of clashes within the asymmetric unit, whereas Symm-Clashes lists symmetry related clashes.

Mol	Chain	Non-H	H(model)	H(added)	Clashes	Symm-Clashes
1	A	3826	0	3584	14	0
1	B	3806	0	3618	19	0
1	C	3837	0	3617	23	0
2	A	25	0	19	0	0
2	B	25	0	19	1	0
2	C	25	0	19	0	0
3	A	69	0	0	3	0
3	B	113	0	0	2	0
3	C	37	0	0	0	0
All	All	11763	0	10876	56	0



The all-atom clashscore is defined as the number of clashes found per 1000 atoms (including hydrogen atoms). The all-atom clashscore for this structure is 2.

All (56) close contacts within the same asymmetric unit are listed below, sorted by their clash magnitude.

Atom-1	Atom-2	Interatomic distance (Å)	Clash overlap (Å)
1:C:126:TRP:HB3	1:C:156:VAL:HG11	1.66	0.78
1:B:62:ARG:NH1	3:B:702:HOH:O	2.28	0.66
1:B:254:TRP:CD2	1:B:255:PRO:HA	2.34	0.62
1:A:191:ARG:NH1	3:A:702:HOH:O	2.32	0.62
1:B:354[A]:ASN:ND2	3:B:703:HOH:O	2.30	0.62
1:A:340:SER:OG	1:A:342:GLU:OE2	2.19	0.60
1:A:254:TRP:CD2	1:A:255:PRO:HA	2.36	0.60
1:B:64:GLU:OE1	1:B:74:ARG:NH2	2.29	0.58
1:C:209:SER:OG	1:C:225:HIS:ND1	2.36	0.56
1:C:254:TRP:CD2	1:C:255:PRO:HA	2.40	0.56
1:B:39:LEU:HD12	1:B:462:PRO:HG3	1.90	0.54
1:C:74:ARG:O	1:C:77:SER:OG	2.23	0.54
1:A:124:ALA:HB2	1:A:160:GLU:HG3	1.90	0.53
1:C:64:GLU:OE1	1:C:74:ARG:NH2	2.36	0.53
1:A:254:TRP:CG	1:A:255:PRO:HA	2.44	0.52
1:C:223:GLU:HG2	1:C:224:LYS:N	2.24	0.52
1:B:117:ASP:OD2	1:B:171:TYR:OH	2.25	0.52
1:B:138:GLU:N	1:B:138:GLU:OE2	2.42	0.52
1:C:434:LEU:HD13	1:C:441:ARG:HG3	1.91	0.52
1:A:145:ASP:HB3	1:A:147:VAL:HG23	1.93	0.51
1:C:353:ALA:HB1	1:C:507:ARG:HD2	1.93	0.50
1:A:128:SER:HB2	1:A:156:VAL:HG12	1.93	0.49
1:C:291:HIS:HA	1:C:334:GLY:HA2	1.93	0.49
1:A:73:ASP:OD1	1:A:95:ARG:NH2	2.31	0.48
1:B:191:ARG:NH1	1:B:194:GLU:OE1	2.46	0.48
1:C:164:TYR:H	1:C:209:SER:HB3	1.78	0.48
1:A:191:ARG:NH2	3:A:703:HOH:O	2.42	0.48
1:C:254:TRP:CG	1:C:255:PRO:HA	2.49	0.48
1:C:322:GLN:N	1:C:322:GLN:OE1	2.42	0.48
1:A:424:ARG:NH1	3:A:706:HOH:O	2.47	0.47
1:A:464:ILE:HD12	1:A:505:PHE:HZ	1.79	0.46
1:A:179:TYR:O	1:A:192:ARG:NH1	2.47	0.46
1:C:264:ASP:OD1	1:C:264:ASP:N	2.47	0.46
1:B:130:ARG:HA	1:C:507:ARG:HH12	1.80	0.45
1:B:30:THR:HA	1:B:33:MET:HE3	1.97	0.45
1:C:55:ILE:HD13	1:C:213:PHE:HB3	1.98	0.45
1:B:50:THR:HG21	1:B:76:THR:HG23	1.99	0.45

*Continued on next page...*

Continued from previous page...

Atom-1	Atom-2	Interatomic distance (Å)	Clash overlap (Å)
1:C:28:ILE:HD11	1:C:86:LEU:HD22	2.00	0.44
1:B:139:GLU:CB	1:B:151:PRO:HD3	2.47	0.44
1:C:128:SER:HB2	1:C:156:VAL:HG22	2.00	0.44
1:B:254:TRP:CG	1:B:255:PRO:HA	2.52	0.44
1:C:126:TRP:HE3	1:C:156:VAL:HG12	1.83	0.43
2:B:601:OOU:H4	2:B:601:OOU:H10	1.75	0.43
1:C:434:LEU:HA	1:C:437:THR:OG1	2.19	0.43
1:C:53:HIS:HA	1:C:215:TRP:NE1	2.34	0.43
1:C:14:TYR:CE2	1:C:16:ASN:HB2	2.54	0.42
1:B:264:ASP:N	1:B:264:ASP:OD1	2.52	0.42
1:A:265:ILE:HD12	1:A:269:HIS:CE1	2.55	0.42
1:A:322:GLN:N	1:A:322:GLN:OE1	2.51	0.42
1:C:120:LYS:HE2	1:C:162:GLU:OE2	2.20	0.42
1:B:509:VAL:O	1:B:510:GLU:HB2	2.19	0.41
1:B:137:GLU:O	1:B:148:ARG:NH2	2.54	0.41
1:B:254:TRP:CD1	1:B:283:PRO:HG2	2.55	0.41
1:B:507:ARG:HB3	1:B:507:ARG:HE	1.67	0.40
1:C:92:ASP:OD1	1:C:93:TYR:N	2.49	0.40
1:B:14:TYR:CE2	1:B:16:ASN:HB2	2.55	0.40

There are no symmetry-related clashes.

## 5.3 Torsion angles [i](#)

### 5.3.1 Protein backbone [i](#)

In the following table, the Percentiles column shows the percent Ramachandran outliers of the chain as a percentile score with respect to all X-ray entries followed by that with respect to entries of similar resolution.

The Analysed column shows the number of residues for which the backbone conformation was analysed, and the total number of residues.

Mol	Chain	Analysed	Favoured	Allowed	Outliers	Percentiles	
1	A	492/536 (92%)	484 (98%)	8 (2%)	0	100	100
1	B	480/536 (90%)	475 (99%)	5 (1%)	0	100	100
1	C	494/536 (92%)	489 (99%)	5 (1%)	0	100	100
All	All	1466/1608 (91%)	1448 (99%)	18 (1%)	0	100	100

There are no Ramachandran outliers to report.

### 5.3.2 Protein sidechains

In the following table, the Percentiles column shows the percent sidechain outliers of the chain as a percentile score with respect to all X-ray entries followed by that with respect to entries of similar resolution.

The Analysed column shows the number of residues for which the sidechain conformation was analysed, and the total number of residues.

Mol	Chain	Analysed	Rotameric	Outliers	Percentiles	
1	A	374/437 (86%)	369 (99%)	5 (1%)	71	81
1	B	378/437 (86%)	372 (98%)	6 (2%)	65	76
1	C	378/437 (86%)	373 (99%)	5 (1%)	71	81
All	All	1130/1311 (86%)	1114 (99%)	16 (1%)	69	79

All (16) residues with a non-rotameric sidechain are listed below:

Mol	Chain	Res	Type
1	A	80	ARG
1	A	129	VAL
1	A	130	ARG
1	A	145	ASP
1	A	316	GLU
1	B	80	ARG
1	B	197	SER
1	B	247	THR
1	B	309	ILE
1	B	342	GLU
1	B	346	ASN
1	C	3	ARG
1	C	209	SER
1	C	223	GLU
1	C	347	ARG
1	C	502	GLN

Some sidechains can be flipped to improve hydrogen bonding and reduce clashes. There are no such sidechains identified.

### 5.3.3 RNA

There are no RNA molecules in this entry.

## 5.4 Non-standard residues in protein, DNA, RNA chains ⓘ

There are no non-standard protein/DNA/RNA residues in this entry.

## 5.5 Carbohydrates ⓘ

There are no carbohydrates in this entry.

## 5.6 Ligand geometry ⓘ

3 ligands are modelled in this entry.

In the following table, the Counts columns list the number of bonds (or angles) for which Mogul statistics could be retrieved, the number of bonds (or angles) that are observed in the model and the number of bonds (or angles) that are defined in the Chemical Component Dictionary. The Link column lists molecule types, if any, to which the group is linked. The Z score for a bond length (or angle) is the number of standard deviations the observed value is removed from the expected value. A bond length (or angle) with  $|Z| > 2$  is considered an outlier worth inspection. RMSZ is the root-mean-square of all Z scores of the bond lengths (or angles).

Mol	Type	Chain	Res	Link	Bond lengths			Bond angles		
					Counts	RMSZ	# Z  > 2	Counts	RMSZ	# Z  > 2
2	0OU	A	601	-	27,27,27	2.56	7 (25%)	32,36,36	1.49	4 (12%)
2	0OU	B	601	-	27,27,27	2.56	8 (29%)	32,36,36	1.49	3 (9%)
2	0OU	C	601	-	27,27,27	2.54	8 (29%)	32,36,36	1.52	5 (15%)

In the following table, the Chirals column lists the number of chiral outliers, the number of chiral centers analysed, the number of these observed in the model and the number defined in the Chemical Component Dictionary. Similar counts are reported in the Torsion and Rings columns. '-' means no outliers of that kind were identified.

Mol	Type	Chain	Res	Link	Chirals	Torsions	Rings
2	0OU	A	601	-	-	0/9/9/9	0/3/3/3
2	0OU	B	601	-	-	0/9/9/9	0/3/3/3
2	0OU	C	601	-	-	0/9/9/9	0/3/3/3

All (23) bond length outliers are listed below:

Mol	Chain	Res	Type	Atoms	Z	Observed(Å)	Ideal(Å)
2	A	601	0OU	CAY-CAX	-3.34	1.34	1.41
2	C	601	0OU	CAY-CAX	-3.32	1.34	1.41
2	B	601	0OU	CAY-CAX	-3.30	1.34	1.41
2	C	601	0OU	CAI-CAS	2.01	1.41	1.38

*Continued on next page...*

*Continued from previous page...*

Mol	Chain	Res	Type	Atoms	Z	Observed(Å)	Ideal(Å)
2	B	601	00U	CAF-CAX	2.07	1.45	1.41
2	C	601	00U	CAJ-CAT	2.69	1.42	1.38
2	A	601	00U	CAJ-CAT	2.81	1.43	1.38
2	B	601	00U	CAJ-CAT	2.86	1.43	1.38
2	B	601	00U	CAX-NAR	3.76	1.44	1.37
2	C	601	00U	CAX-NAR	3.82	1.44	1.37
2	A	601	00U	CAX-NAR	3.89	1.44	1.37
2	A	601	00U	CAD-CAF	4.26	1.46	1.36
2	C	601	00U	CAD-CAF	4.28	1.46	1.36
2	B	601	00U	CAD-CAF	4.30	1.46	1.36
2	C	601	00U	CAG-CAY	4.72	1.50	1.41
2	B	601	00U	CAG-CAY	4.72	1.50	1.41
2	A	601	00U	CAG-CAY	4.77	1.50	1.41
2	C	601	00U	CAV-NAQ	5.01	1.44	1.36
2	A	601	00U	CAV-NAQ	5.06	1.44	1.36
2	B	601	00U	CAV-NAQ	5.13	1.44	1.36
2	C	601	00U	OAA-CAW	7.43	1.36	1.23
2	B	601	00U	OAA-CAW	7.47	1.36	1.23
2	A	601	00U	OAA-CAW	7.50	1.36	1.23

All (12) bond angle outliers are listed below:

Mol	Chain	Res	Type	Atoms	Z	Observed(°)	Ideal(°)
2	C	601	00U	CAY-CAX-NAR	-5.89	120.31	123.67
2	B	601	00U	CAY-CAX-NAR	-5.78	120.38	123.67
2	A	601	00U	CAY-CAX-NAR	-5.77	120.38	123.67
2	B	601	00U	CAK-CAW-CAY	-3.25	119.45	123.05
2	A	601	00U	CAK-CAW-CAY	-3.02	119.70	123.05
2	C	601	00U	CAK-CAW-CAY	-2.94	119.80	123.05
2	C	601	00U	CAN-NAQ-CAV	-2.28	119.92	123.51
2	C	601	00U	CAT-CAH-CAS	2.08	119.92	117.42
2	A	601	00U	CAT-CAH-CAS	2.09	119.93	117.42
2	B	601	00U	CAV-NAR-CAX	2.16	120.10	117.15
2	C	601	00U	CAV-NAR-CAX	2.20	120.16	117.15
2	A	601	00U	CAV-NAR-CAX	2.25	120.23	117.15

There are no chirality outliers.

There are no torsion outliers.

There are no ring outliers.

1 monomer is involved in 1 short contact:

Mol	Chain	Res	Type	Clashes	Symm-Clashes
2	B	601	0OU	1	0

## 5.7 Other polymers [i](#)

There are no such residues in this entry.

## 5.8 Polymer linkage issues [i](#)

There are no chain breaks in this entry.

## 6 Fit of model and data

### 6.1 Protein, DNA and RNA chains

In the following table, the column labelled ‘#RSRZ > 2’ contains the number (and percentage) of RSRZ outliers, followed by percent RSRZ outliers for the chain as percentile scores relative to all X-ray entries and entries of similar resolution. The OWAB column contains the minimum, median, 95<sup>th</sup> percentile and maximum values of the occupancy-weighted average B-factor per residue. The column labelled ‘Q < 0.9’ lists the number of (and percentage) of residues with an average occupancy less than 0.9.

Mol	Chain	Analysed	<RSRZ>	#RSRZ>2	OWAB(Å <sup>2</sup> )	Q<0.9
1	A	496/536 (92%)	-0.15	2 (0%) 92 93	27, 40, 62, 85	0
1	B	485/536 (90%)	-0.07	14 (2%) 51 48	24, 35, 69, 96	0
1	C	497/536 (92%)	0.01	8 (1%) 72 69	28, 44, 72, 99	0
All	All	1478/1608 (91%)	-0.07	24 (1%) 72 69	24, 40, 69, 99	0

All (24) RSRZ outliers are listed below:

Mol	Chain	Res	Type	RSRZ
1	B	155	PRO	3.6
1	C	126	TRP	3.6
1	C	313	GLU	3.3
1	B	158	TRP	3.2
1	B	137	GLU	3.1
1	C	296	ASN	3.0
1	A	309	ILE	2.7
1	B	123	TYR	2.6
1	C	151	PRO	2.6
1	B	136	GLY	2.6
1	B	148	ARG	2.6
1	C	309	ILE	2.5
1	C	3	ARG	2.5
1	C	314	LEU	2.4
1	B	138	GLU	2.4
1	B	131	ASP	2.4
1	A	158	TRP	2.4
1	B	181	ASN	2.3
1	B	124	ALA	2.3
1	B	309	ILE	2.2
1	B	150	GLY	2.2
1	B	149	TYR	2.1
1	C	136	GLY	2.1

*Continued on next page...*

*Continued from previous page...*

Mol	Chain	Res	Type	RSRZ
1	B	132	GLU	2.1

## 6.2 Non-standard residues in protein, DNA, RNA chains [i](#)

There are no non-standard protein/DNA/RNA residues in this entry.

## 6.3 Carbohydrates [i](#)

There are no carbohydrates in this entry.

## 6.4 Ligands [i](#)

In the following table, the Atoms column lists the number of modelled atoms in the group and the number defined in the chemical component dictionary. The B-factors column lists the minimum, median, 95<sup>th</sup> percentile and maximum values of B factors of atoms in the group. The column labelled 'Q< 0.9' lists the number of atoms with occupancy less than 0.9.

Mol	Type	Chain	Res	Atoms	RSCC	RSR	B-factors(Å <sup>2</sup> )	Q<0.9
2	0OU	C	601	25/25	0.87	0.21	43,53,69,71	0
2	0OU	A	601	25/25	0.93	0.16	32,45,54,56	0
2	0OU	B	601	25/25	0.95	0.18	23,28,68,73	0

## 6.5 Other polymers [i](#)

There are no such residues in this entry.