



wwPDB X-ray Structure Validation Summary Report ⓘ

Mar 13, 2018 – 05:35 pm GMT

PDB ID : 3K3B
Title : Co-crystal structure of the human kinesin Eg5 with a novel tetrahydro-beta-carboline
Authors : Bussiere, D.E.; Bellamacina, C.; Le, V.
Deposited on : 2009-10-02
Resolution : 2.40 Å(reported)

This is a wwPDB X-ray Structure Validation Summary Report for a publicly released PDB entry.

We welcome your comments at validation@mail.wwpdb.org

A user guide is available at

<https://www.wwpdb.org/validation/2017/XrayValidationReportHelp>

with specific help available everywhere you see the ⓘ symbol.

The following versions of software and data (see [references ⓘ](#)) were used in the production of this report:

MolProbity : 4.02b-467
Mogul : 1.7.3 (157068), CSD as539be (2018)
Xtriage (Phenix) : 1.13
EDS : trunk31020
Percentile statistics : 20171227.v01 (using entries in the PDB archive December 27th 2017)
Refmac : 5.8.0158
CCP4 : 7.0 (Gargrove)
Ideal geometry (proteins) : Engh & Huber (2001)
Ideal geometry (DNA, RNA) : Parkinson et al. (1996)
Validation Pipeline (wwPDB-VP) : trunk31020

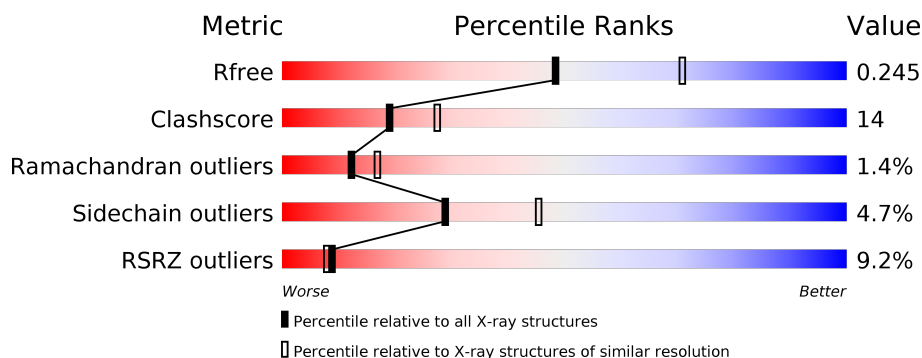
1 Overall quality at a glance

The following experimental techniques were used to determine the structure:

X-RAY DIFFRACTION

The reported resolution of this entry is 2.40 Å.

Percentile scores (ranging between 0-100) for global validation metrics of the entry are shown in the following graphic. The table shows the number of entries on which the scores are based.



Metric	Whole archive (#Entries)	Similar resolution (#Entries, resolution range(Å))
R_{free}	111664	3481 (2.40-2.40)
Clashscore	122126	3956 (2.40-2.40)
Ramachandran outliers	120053	3897 (2.40-2.40)
Sidechain outliers	120020	3898 (2.40-2.40)
RSRZ outliers	108989	3386 (2.40-2.40)

The table below summarises the geometric issues observed across the polymeric chains and their fit to the electron density. The red, orange, yellow and green segments on the lower bar indicate the fraction of residues that contain outliers for ≥ 3 , 2, 1 and 0 types of geometric quality criteria. A grey segment represents the fraction of residues that are not modelled. The numeric value for each fraction is indicated below the corresponding segment, with a dot representing fractions $\leq 5\%$. The upper red bar (where present) indicates the fraction of residues that have poor fit to the electron density. The numeric value is given above the bar.

Mol	Chain	Length	Quality of chain
1	A	368	<div> <div>7%</div> <div> <div></div> <div>65%</div> <div>22%</div> <div>•</div> <div>9%</div> </div> </div>
1	B	368	<div> <div>10%</div> <div> <div></div> <div>65%</div> <div>23%</div> <div>•</div> <div>10%</div> </div> </div>

2 Entry composition [i](#)

There are 8 unique types of molecules in this entry. The entry contains 5582 atoms, of which 0 are hydrogens and 0 are deuteriums.

In the tables below, the ZeroOcc column contains the number of atoms modelled with zero occupancy, the AltConf column contains the number of residues with at least one atom in alternate conformation and the Trace column contains the number of residues modelled with at most 2 atoms.

- Molecule 1 is a protein called Kinesin-like protein KIF11.

Mol	Chain	Residues	Atoms					ZeroOcc	AltConf	Trace
1	A	335	Total	C	N	O	S	0	1	0
			2586	1622	445	509	10			
1	B	331	Total	C	N	O	S	0	0	0
			2567	1607	442	508	10			

- Molecule 2 is MAGNESIUM ION (three-letter code: MG) (formula: Mg).

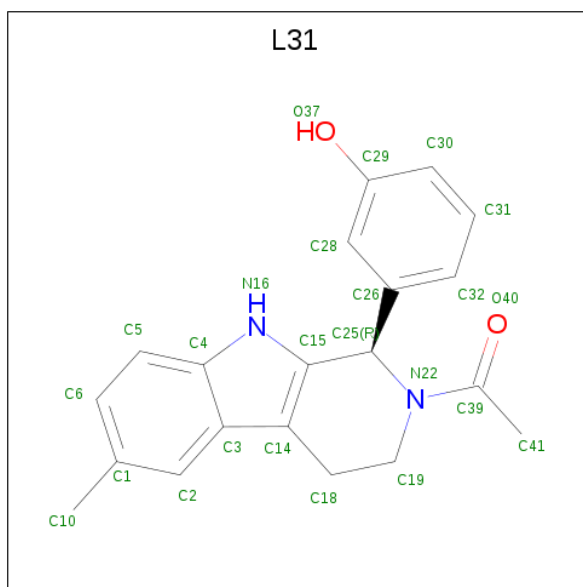
Mol	Chain	Residues	Atoms		ZeroOcc	AltConf
2	B	1	Total	Mg	0	0
			1	1		
2	A	1	Total	Mg	0	0
			1	1		

- Molecule 3 is ADENOSINE-5'-DIPHOSPHATE (three-letter code: ADP) (formula: $C_{10}H_{15}N_5O_{10}P_2$).



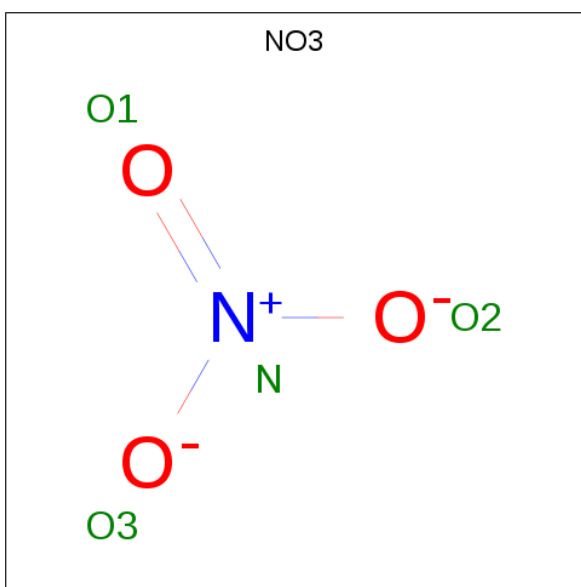
Mol	Chain	Residues	Atoms					ZeroOcc	AltConf
3	A	1	Total	C	N	O	P	0	0
			27	10	5	10	2		
3	B	1	Total	C	N	O	P	0	0
			27	10	5	10	2		

- Molecule 4 is 3-[(1R)-2-acetyl-6-methyl-2,3,4,9-tetrahydro-1H-beta-carbolin-1-yl]phenol (three-letter code: L31) (formula: C₂₀H₂₀N₂O₂).



Mol	Chain	Residues	Atoms				ZeroOcc	AltConf
4	A	1	Total	C	N	O	0	0
			24	20	2	2		
4	B	1	Total	C	N	O	0	0
			24	20	2	2		

- Molecule 5 is NITRATE ION (three-letter code: NO3) (formula: NO₃).

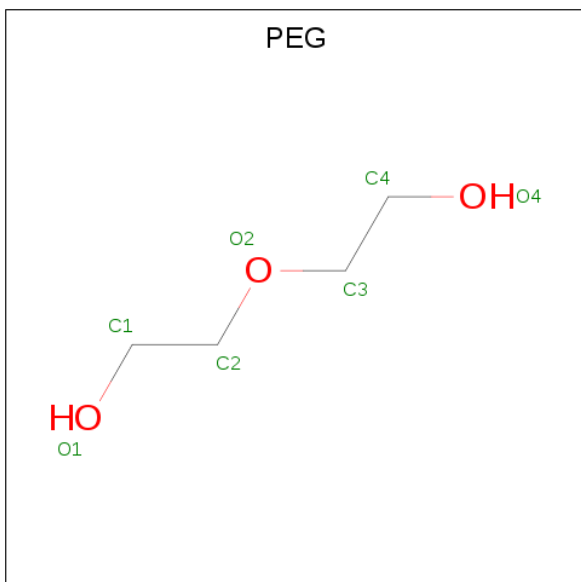


Mol	Chain	Residues	Atoms			ZeroOcc	AltConf
5	A	1	Total	N	O	0	0
			4	1	3		
5	B	1	Total	N	O	0	0
			4	1	3		

- Molecule 6 is CHLORIDE ION (three-letter code: CL) (formula: Cl).

Mol	Chain	Residues	Atoms		ZeroOcc	AltConf
6	A	1	Total	Cl	0	0
			1	1		

- Molecule 7 is DI(HYDROXYETHYL)ETHER (three-letter code: PEG) (formula: C₄H₁₀O₃).



Mol	Chain	Residues	Atoms			ZeroOcc	AltConf
7	A	1	Total	C	O	0	0
			7	4	3		

- Molecule 8 is water.

Mol	Chain	Residues	Atoms		ZeroOcc	AltConf
8	A	162	Total	O	0	0
			162	162		
8	B	147	Total	O	0	0
			147	147		

4 Data and refinement statistics

Property	Value	Source
Space group	P 21 21 21	Depositor
Cell constants a, b, c, α , β , γ	78.97Å 92.67Å 102.95Å 90.00° 90.00° 90.00°	Depositor
Resolution (Å)	39.96 – 2.40 39.96 – 2.40	Depositor EDS
% Data completeness (in resolution range)	99.3 (39.96-2.40) 94.4 (39.96-2.40)	Depositor EDS
R_{merge}	0.12	Depositor
R_{sym}	(Not available)	Depositor
$\langle I/\sigma(I) \rangle$ ¹	2.42 (at 2.39Å)	Xtriage
Refinement program	PHENIX (phenix.refine)	Depositor
R, R_{free}	0.205 , 0.243 0.204 , 0.245	Depositor DCC
R_{free} test set	1510 reflections (5.00%)	wwPDB-VP
Wilson B-factor (Å ²)	26.2	Xtriage
Anisotropy	0.306	Xtriage
Bulk solvent k_{sol} (e/Å ³), B_{sol} (Å ²)	0.32 , 46.6	EDS
L-test for twinning ²	$\langle L \rangle = 0.49$, $\langle L^2 \rangle = 0.32$	Xtriage
Estimated twinning fraction	No twinning to report.	Xtriage
F_o, F_c correlation	0.94	EDS
Total number of atoms	5582	wwPDB-VP
Average B, all atoms (Å ²)	65.0	wwPDB-VP

Xtriage's analysis on translational NCS is as follows: *The analyses of the Patterson function reveals a significant off-origin peak that is 40.92 % of the origin peak, indicating pseudo-translational symmetry. The chance of finding a peak of this or larger height randomly in a structure without pseudo-translational symmetry is equal to 2.5497e-04. The detected translational NCS is most likely also responsible for the elevated intensity ratio.*

¹Intensities estimated from amplitudes.

²Theoretical values of $\langle |L| \rangle$, $\langle L^2 \rangle$ for acentric reflections are 0.5, 0.333 respectively for untwinned datasets, and 0.375, 0.2 for perfectly twinned datasets.

5 Model quality

5.1 Standard geometry

Bond lengths and bond angles in the following residue types are not validated in this section: MG, ADP, CL, L31, PEG, NO3

The Z score for a bond length (or angle) is the number of standard deviations the observed value is removed from the expected value. A bond length (or angle) with $|Z| > 5$ is considered an outlier worth inspection. RMSZ is the root-mean-square of all Z scores of the bond lengths (or angles).

Mol	Chain	Bond lengths		Bond angles	
		RMSZ	# Z >5	RMSZ	# Z >5
1	A	0.36	0/2627	0.51	0/3558
1	B	0.36	0/2605	0.51	0/3530
All	All	0.36	0/5232	0.51	0/7088

There are no bond length outliers.

There are no bond angle outliers.

There are no chirality outliers.

There are no planarity outliers.

5.2 Too-close contacts

In the following table, the Non-H and H(model) columns list the number of non-hydrogen atoms and hydrogen atoms in the chain respectively. The H(added) column lists the number of hydrogen atoms added and optimized by MolProbity. The Clashes column lists the number of clashes within the asymmetric unit, whereas Symm-Clashes lists symmetry related clashes.

Mol	Chain	Non-H	H(model)	H(added)	Clashes	Symm-Clashes
1	A	2586	0	2569	84	0
1	B	2567	0	2542	65	0
2	A	1	0	0	0	0
2	B	1	0	0	0	0
3	A	27	0	12	1	0
3	B	27	0	12	1	0
4	A	24	0	20	3	0
4	B	24	0	20	0	0
5	A	4	0	0	0	0
5	B	4	0	0	1	0
6	A	1	0	0	0	0

Continued on next page...

Continued from previous page...

Mol	Chain	Non-H	H(model)	H(added)	Clashes	Symm-Clashes
7	A	7	0	10	0	0
8	A	162	0	0	10	0
8	B	147	0	0	4	0
All	All	5582	0	5185	146	0

The all-atom clashscore is defined as the number of clashes found per 1000 atoms (including hydrogen atoms). The all-atom clashscore for this structure is 14.

The worst 5 of 146 close contacts within the same asymmetric unit are listed below, sorted by their clash magnitude.

Atom-1	Atom-2	Interatomic distance (Å)	Clash overlap (Å)
1:A:121:PRO:HA	1:A:122:ASN:CB	1.78	1.14
1:A:121:PRO:HA	1:A:122:ASN:HB2	1.43	1.00
1:A:191:LYS:O	1:A:192:ARG:HB2	1.61	0.98
1:B:269:SER:C	1:B:271:ASN:H	1.73	0.88
1:A:121:PRO:HA	1:A:122:ASN:HB3	1.54	0.86

There are no symmetry-related clashes.

5.3 Torsion angles [i](#)

5.3.1 Protein backbone [i](#)

In the following table, the Percentiles column shows the percent Ramachandran outliers of the chain as a percentile score with respect to all X-ray entries followed by that with respect to entries of similar resolution.

The Analysed column shows the number of residues for which the backbone conformation was analysed, and the total number of residues.

Mol	Chain	Analysed	Favoured	Allowed	Outliers	Percentiles	
1	A	331/368 (90%)	311 (94%)	14 (4%)	6 (2%)	9	11
1	B	325/368 (88%)	303 (93%)	19 (6%)	3 (1%)	19	27
All	All	656/736 (89%)	614 (94%)	33 (5%)	9 (1%)	12	17

5 of 9 Ramachandran outliers are listed below:

Mol	Chain	Res	Type
1	A	122	ASN

Continued on next page...

Continued from previous page...

Mol	Chain	Res	Type
1	B	270	GLU
1	A	57	LEU
1	A	177	ASP
1	A	190	ASN

5.3.2 Protein sidechains ⓘ

In the following table, the Percentiles column shows the percent sidechain outliers of the chain as a percentile score with respect to all X-ray entries followed by that with respect to entries of similar resolution.

The Analysed column shows the number of residues for which the sidechain conformation was analysed, and the total number of residues.

Mol	Chain	Analysed	Rotameric	Outliers	Percentiles	
1	A	285/322 (88%)	271 (95%)	14 (5%)	27	44
1	B	286/322 (89%)	273 (96%)	13 (4%)	30	47
All	All	571/644 (89%)	544 (95%)	27 (5%)	29	45

5 of 27 residues with a non-rotameric sidechain are listed below:

Mol	Chain	Res	Type
1	A	309	VAL
1	B	50	VAL
1	B	309	VAL
1	A	358	ASN
1	A	167	GLU

Some sidechains can be flipped to improve hydrogen bonding and reduce clashes. 5 of 7 such sidechains are listed below:

Mol	Chain	Res	Type
1	B	18	ASN
1	B	271	ASN
1	B	98	ASN
1	A	190	ASN
1	B	244	HIS

5.3.3 RNA ⓘ

There are no RNA molecules in this entry.

5.4 Non-standard residues in protein, DNA, RNA chains [i](#)

There are no non-standard protein/DNA/RNA residues in this entry.

5.5 Carbohydrates [i](#)

There are no carbohydrates in this entry.

5.6 Ligand geometry [i](#)

Of 10 ligands modelled in this entry, 3 are monoatomic - leaving 7 for Mogul analysis.

In the following table, the Counts columns list the number of bonds (or angles) for which Mogul statistics could be retrieved, the number of bonds (or angles) that are observed in the model and the number of bonds (or angles) that are defined in the Chemical Component Dictionary. The Link column lists molecule types, if any, to which the group is linked. The Z score for a bond length (or angle) is the number of standard deviations the observed value is removed from the expected value. A bond length (or angle) with $|Z| > 2$ is considered an outlier worth inspection. RMSZ is the root-mean-square of all Z scores of the bond lengths (or angles).

Mol	Type	Chain	Res	Link	Bond lengths			Bond angles		
					Counts	RMSZ	$\# Z > 2$	Counts	RMSZ	$\# Z > 2$
3	ADP	A	370	2	25,29,29	1.07	1 (4%)	25,45,45	1.87	3 (12%)
4	L31	A	371	-	26,27,27	4.06	15 (57%)	29,40,40	1.52	5 (17%)
5	NO3	A	372	-	1,3,3	3.43	1 (100%)	0,3,3	0.00	-
7	PEG	A	374	-	6,6,6	0.46	0	5,5,5	0.26	0
5	NO3	B	369	-	1,3,3	3.44	1 (100%)	0,3,3	0.00	-
3	ADP	B	371	2	25,29,29	1.06	1 (4%)	25,45,45	1.88	4 (16%)
4	L31	B	372	-	26,27,27	4.10	15 (57%)	29,40,40	1.52	4 (13%)

In the following table, the Chirals column lists the number of chiral outliers, the number of chiral centers analysed, the number of these observed in the model and the number defined in the Chemical Component Dictionary. Similar counts are reported in the Torsion and Rings columns. '-' means no outliers of that kind were identified.

Mol	Type	Chain	Res	Link	Chirals	Torsions	Rings
3	ADP	A	370	2	-	0/12/32/32	0/3/3/3
4	L31	A	371	-	-	0/8/21/21	0/4/4/4
5	NO3	A	372	-	-	0/0/0/0	0/0/0/0
7	PEG	A	374	-	-	0/4/4/4	0/0/0/0
5	NO3	B	369	-	-	0/0/0/0	0/0/0/0
3	ADP	B	371	2	-	0/12/32/32	0/3/3/3
4	L31	B	372	-	-	0/8/21/21	0/4/4/4

The worst 5 of 34 bond length outliers are listed below:

Mol	Chain	Res	Type	Atoms	Z	Observed(Å)	Ideal(Å)
4	A	371	L31	C25-N22	-4.80	1.45	1.48
4	B	372	L31	C25-N22	-4.76	1.45	1.48
4	A	371	L31	C15-C25	2.33	1.53	1.51
4	B	372	L31	C15-C25	2.45	1.53	1.51
4	B	372	L31	C2-C3	2.53	1.46	1.42

The worst 5 of 16 bond angle outliers are listed below:

Mol	Chain	Res	Type	Atoms	Z	Observed(°)	Ideal(°)
3	B	371	ADP	N3-C2-N1	-6.95	122.91	128.86
3	A	370	ADP	N3-C2-N1	-6.69	123.14	128.86
3	A	370	ADP	PA-O3A-PB	-3.69	120.22	132.63
3	B	371	ADP	PA-O3A-PB	-3.36	121.34	132.63
3	A	370	ADP	C4-C5-N7	-2.84	106.66	109.41

There are no chirality outliers.

There are no torsion outliers.

There are no ring outliers.

4 monomers are involved in 6 short contacts:

Mol	Chain	Res	Type	Clashes	Symm-Clashes
3	A	370	ADP	1	0
4	A	371	L31	3	0
5	B	369	NO3	1	0
3	B	371	ADP	1	0

5.7 Other polymers [i](#)

There are no such residues in this entry.

5.8 Polymer linkage issues [i](#)

There are no chain breaks in this entry.

6 Fit of model and data [i](#)

6.1 Protein, DNA and RNA chains [i](#)

In the following table, the column labelled ‘#RSRZ> 2’ contains the number (and percentage) of RSRZ outliers, followed by percent RSRZ outliers for the chain as percentile scores relative to all X-ray entries and entries of similar resolution. The OWAB column contains the minimum, median, 95th percentile and maximum values of the occupancy-weighted average B-factor per residue. The column labelled ‘Q< 0.9’ lists the number of (and percentage) of residues with an average occupancy less than 0.9.

Mol	Chain	Analysed	<RSRZ>	#RSRZ>2	OWAB(Å ²)	Q<0.9
1	A	335/368 (91%)	0.50	25 (7%) 14 12	42, 59, 100, 118	0
1	B	331/368 (89%)	0.64	36 (10%) 5 5	44, 63, 103, 118	0
All	All	666/736 (90%)	0.57	61 (9%) 9 8	42, 61, 101, 118	0

The worst 5 of 61 RSRZ outliers are listed below:

Mol	Chain	Res	Type	RSRZ
1	A	57	LEU	5.7
1	B	364	GLU	5.6
1	A	326	GLY	5.5
1	B	326	GLY	5.4
1	A	55	GLY	5.0

6.2 Non-standard residues in protein, DNA, RNA chains [i](#)

There are no non-standard protein/DNA/RNA residues in this entry.

6.3 Carbohydrates [i](#)

There are no carbohydrates in this entry.

6.4 Ligands [i](#)

In the following table, the Atoms column lists the number of modelled atoms in the group and the number defined in the chemical component dictionary. The B-factors column lists the minimum, median, 95th percentile and maximum values of B factors of atoms in the group. The column labelled ‘Q< 0.9’ lists the number of atoms with occupancy less than 0.9.

Mol	Type	Chain	Res	Atoms	RSCC	RSR	B-factors(\AA^2)	Q<0.9
7	PEG	A	374	7/7	0.79	0.27	67,79,80,82	0
2	MG	A	369	1/1	0.86	0.34	52,52,52,52	0
5	NO3	B	369	4/4	0.86	0.31	82,105,108,109	0
4	L31	A	371	24/24	0.88	0.16	35,43,46,55	0
6	CL	A	373	1/1	0.89	0.11	87,87,87,87	0
4	L31	B	372	24/24	0.91	0.17	37,48,53,89	0
5	NO3	A	372	4/4	0.91	0.13	74,78,83,88	0
2	MG	B	370	1/1	0.92	0.33	54,54,54,54	0
3	ADP	A	370	27/27	0.95	0.17	40,49,56,59	0
3	ADP	B	371	27/27	0.95	0.16	40,48,52,54	0

6.5 Other polymers [i](#)

There are no such residues in this entry.