



Full wwPDB X-ray Structure Validation Report ⓘ

Mar 9, 2018 – 05:01 am GMT

PDB ID : 4K5G
Title : Structure of neuronal nitric oxide synthase heme domain in complex with ((2S, 3S)-1,3-bis((6-(2,5-dimethyl-1H-pyrrol-1-yl)-4-methylpyridin-2-yl)methoxy)-2-aminobutane
Authors : Li, H.; Poulos, T.L.
Deposited on : 2013-04-14
Resolution : 1.85 Å(reported)

This is a Full wwPDB X-ray Structure Validation Report for a publicly released PDB entry.

We welcome your comments at validation@mail.wwpdb.org

A user guide is available at

<https://www.wwpdb.org/validation/2017/XrayValidationReportHelp>

with specific help available everywhere you see the ⓘ symbol.

The following versions of software and data (see [references ⓘ](#)) were used in the production of this report:

MolProbity : 4.02b-467
Mogul : 1.7.3 (157068), CSD as539be (2018)
Xtriage (Phenix) : 1.13
EDS : trunk30967
Percentile statistics : 20171227.v01 (using entries in the PDB archive December 27th 2017)
Refmac : 5.8.0158
CCP4 : 7.0 (Gargrove)
Ideal geometry (proteins) : Engh & Huber (2001)
Ideal geometry (DNA, RNA) : Parkinson et al. (1996)
Validation Pipeline (wwPDB-VP) : trunk30967

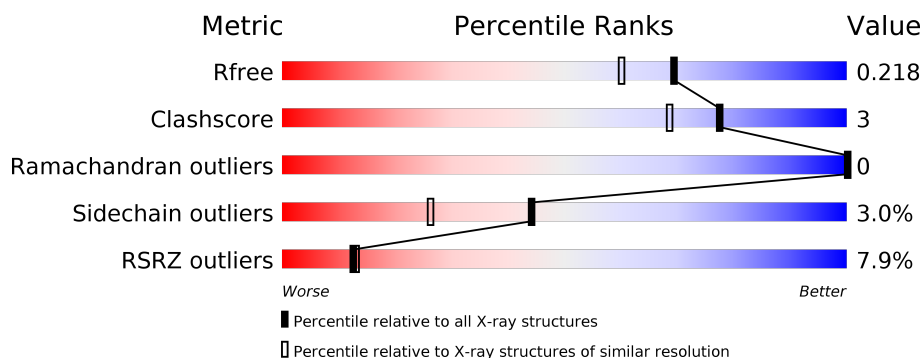
1 Overall quality at a glance

The following experimental techniques were used to determine the structure:

X-RAY DIFFRACTION

The reported resolution of this entry is 1.85 Å.

Percentile scores (ranging between 0-100) for global validation metrics of the entry are shown in the following graphic. The table shows the number of entries on which the scores are based.



Metric	Whole archive (#Entries)	Similar resolution (#Entries, resolution range(Å))
R_{free}	111664	2111 (1.86-1.86)
Clashscore	122126	2258 (1.86-1.86)
Ramachandran outliers	120053	2234 (1.86-1.86)
Sidechain outliers	120020	2234 (1.86-1.86)
RSRZ outliers	108989	2075 (1.86-1.86)

The table below summarises the geometric issues observed across the polymeric chains and their fit to the electron density. The red, orange, yellow and green segments on the lower bar indicate the fraction of residues that contain outliers for ≥ 3 , 2, 1 and 0 types of geometric quality criteria. A grey segment represents the fraction of residues that are not modelled. The numeric value for each fraction is indicated below the corresponding segment, with a dot representing fractions $\leq 5\%$. The upper red bar (where present) indicates the fraction of residues that have poor fit to the electron density. The numeric value is given above the bar.

Mol	Chain	Length	Quality of chain
1	A	422	
1	B	422	

2 Entry composition [i](#)

There are 7 unique types of molecules in this entry. The entry contains 7238 atoms, of which 0 are hydrogens and 0 are deuteriums.

In the tables below, the ZeroOcc column contains the number of atoms modelled with zero occupancy, the AltConf column contains the number of residues with at least one atom in alternate conformation and the Trace column contains the number of residues modelled with at most 2 atoms.

- Molecule 1 is a protein called Nitric oxide synthase, brain.

Mol	Chain	Residues	Atoms					ZeroOcc	AltConf	Trace
1	A	407	Total	C	N	O	S	0	2	0
			3323	2128	566	608	21			
1	B	411	Total	C	N	O	S	0	3	0
			3357	2148	574	614	21			

- Molecule 2 is PROTOPORPHYRIN IX CONTAINING FE (three-letter code: HEM) (formula: $C_{34}H_{32}FeN_4O_4$).



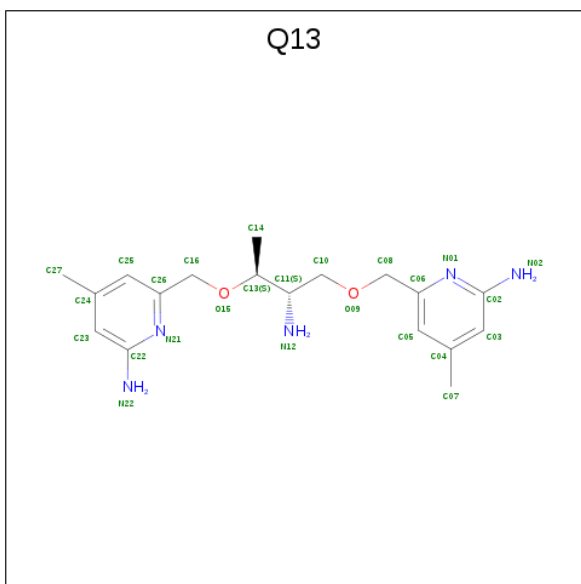
Mol	Chain	Residues	Atoms					ZeroOcc	AltConf
2	A	1	Total	C	Fe	N	O	0	0
			43	34	1	4	4		
2	B	1	Total	C	Fe	N	O	0	0
			43	34	1	4	4		

- Molecule 3 is 5,6,7,8-TETRAHYDROBIOPTERIN (three-letter code: H4B) (formula: $C_9H_{15}N_5O_3$).



Mol	Chain	Residues	Atoms				ZeroOcc	AltConf
3	A	1	Total	C	N	O	0	0
			17	9	5	3		
3	B	1	Total	C	N	O	0	0
			17	9	5	3		

- Molecule 4 is 6,6'-{[(2S,3S)-2-aminobutane-1,3-diyl]bis(oxymethanediyl)}bis(4-methylpyridine-2-amine) (three-letter code: Q13) (formula: C₁₈H₂₇N₅O₂).



Mol	Chain	Residues	Atoms				ZeroOcc	AltConf
4	A	1	Total	C	N	O	0	0
			25	18	5	2		

Continued on next page...

Continued from previous page...

Mol	Chain	Residues	Atoms				ZeroOcc	AltConf
4	B	1	Total	C	N	O	0	0
			25	18	5	2		

- Molecule 5 is ACETATE ION (three-letter code: ACT) (formula: $C_2H_3O_2$).



Mol	Chain	Residues	Atoms			ZeroOcc	AltConf
5	A	1	Total	C	O	0	0
			4	2	2		
5	B	1	Total	C	O	0	0
			4	2	2		

- Molecule 6 is ZINC ION (three-letter code: ZN) (formula: Zn).

Mol	Chain	Residues	Atoms		ZeroOcc	AltConf
6	A	1	Total	Zn	0	0
			1	1		

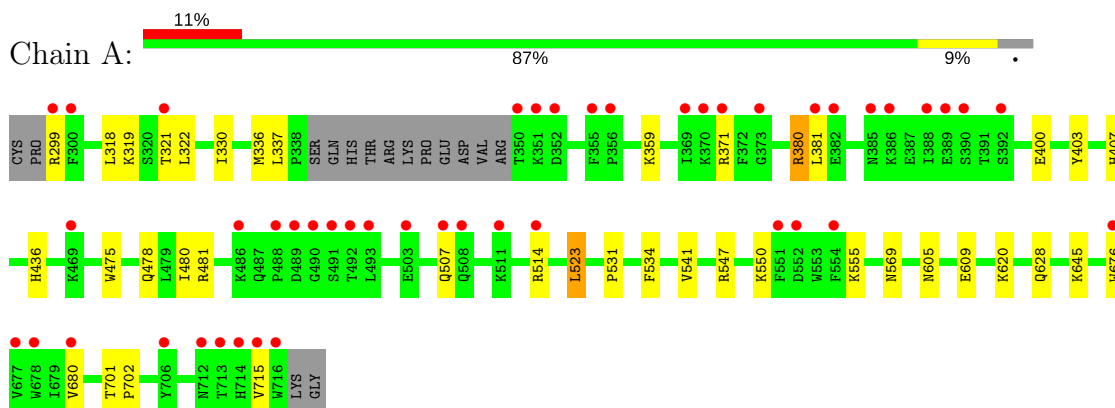
- Molecule 7 is water.

Mol	Chain	Residues	Atoms		ZeroOcc	AltConf
7	A	146	Total	O	0	0
			146	146		
7	B	233	Total	O	0	0
			233	233		

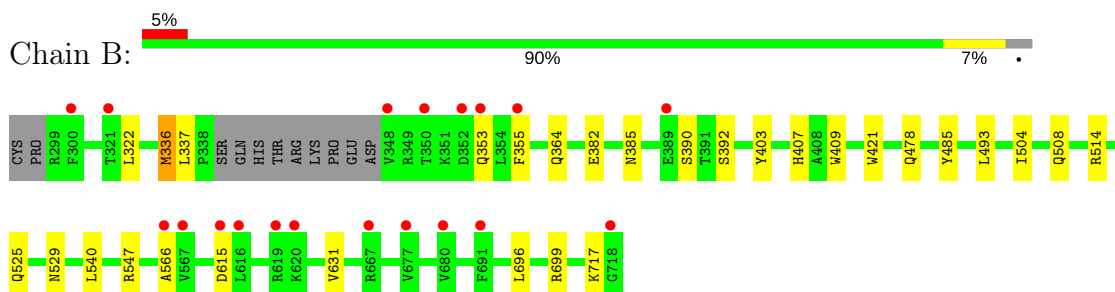
3 Residue-property plots [i](#)

These plots are drawn for all protein, RNA and DNA chains in the entry. The first graphic for a chain summarises the proportions of the various outlier classes displayed in the second graphic. The second graphic shows the sequence view annotated by issues in geometry and electron density. Residues are color-coded according to the number of geometric quality criteria for which they contain at least one outlier: green = 0, yellow = 1, orange = 2 and red = 3 or more. A red dot above a residue indicates a poor fit to the electron density ($RSRZ > 2$). Stretches of 2 or more consecutive residues without any outlier are shown as a green connector. Residues present in the sample, but not in the model, are shown in grey.

- Molecule 1: Nitric oxide synthase, brain



- Molecule 1: Nitric oxide synthase, brain



4 Data and refinement statistics

Property	Value	Source
Space group	P 21 21 21	Depositor
Cell constants a, b, c, α , β , γ	52.13Å 110.73Å 164.38Å 90.00° 90.00° 90.00°	Depositor
Resolution (Å)	44.06 – 1.85 44.02 – 1.85	Depositor EDS
% Data completeness (in resolution range)	97.9 (44.06-1.85) 98.0 (44.02-1.85)	Depositor EDS
R_{merge}	0.06	Depositor
R_{sym}	0.06	Depositor
$\langle I/\sigma(I) \rangle$ ¹	2.12 (at 1.86Å)	Xtriage
Refinement program	REFMAC	Depositor
R, R_{free}	0.185 , 0.219 0.185 , 0.218	Depositor DCC
R_{free} test set	3985 reflections (4.95%)	wwPDB-VP
Wilson B-factor (Å ²)	26.2	Xtriage
Anisotropy	0.766	Xtriage
Bulk solvent k_{sol} (e/Å ³), B_{sol} (Å ²)	0.36 , 43.1	EDS
L-test for twinning ²	$\langle L \rangle = 0.49$, $\langle L^2 \rangle = 0.32$	Xtriage
Estimated twinning fraction	No twinning to report.	Xtriage
F_o, F_c correlation	0.96	EDS
Total number of atoms	7238	wwPDB-VP
Average B, all atoms (Å ²)	38.0	wwPDB-VP

Xtriage's analysis on translational NCS is as follows: *The largest off-origin peak in the Patterson function is 4.90% of the height of the origin peak. No significant pseudotranslation is detected.*

¹Intensities estimated from amplitudes.

²Theoretical values of $\langle |L| \rangle$, $\langle L^2 \rangle$ for acentric reflections are 0.5, 0.333 respectively for untwinned datasets, and 0.375, 0.2 for perfectly twinned datasets.

5 Model quality

5.1 Standard geometry

Bond lengths and bond angles in the following residue types are not validated in this section: HEM, ZN, H4B, Q13, ACT

The Z score for a bond length (or angle) is the number of standard deviations the observed value is removed from the expected value. A bond length (or angle) with $|Z| > 5$ is considered an outlier worth inspection. RMSZ is the root-mean-square of all Z scores of the bond lengths (or angles).

Mol	Chain	Bond lengths		Bond angles	
		RMSZ	# Z >5	RMSZ	# Z >5
1	A	0.52	0/3422	0.65	0/4644
1	B	0.58	0/3459	0.68	0/4689
All	All	0.56	0/6881	0.67	0/9333

There are no bond length outliers.

There are no bond angle outliers.

There are no chirality outliers.

There are no planarity outliers.

5.2 Too-close contacts

In the following table, the Non-H and H(model) columns list the number of non-hydrogen atoms and hydrogen atoms in the chain respectively. The H(added) column lists the number of hydrogen atoms added and optimized by MolProbity. The Clashes column lists the number of clashes within the asymmetric unit, whereas Symm-Clashes lists symmetry related clashes.

Mol	Chain	Non-H	H(model)	H(added)	Clashes	Symm-Clashes
1	A	3323	0	3234	21	0
1	B	3357	0	3275	17	0
2	A	43	0	30	4	0
2	B	43	0	30	4	0
3	A	17	0	15	0	0
3	B	17	0	15	1	0
4	A	25	0	27	3	0
4	B	25	0	27	4	0
5	A	4	0	3	0	0
5	B	4	0	3	0	0
6	A	1	0	0	0	0

Continued on next page...

Continued from previous page...

Mol	Chain	Non-H	H(model)	H(added)	Clashes	Symm-Clashes
7	A	146	0	0	4	0
7	B	233	0	0	2	0
All	All	7238	0	6659	43	0

The all-atom clashscore is defined as the number of clashes found per 1000 atoms (including hydrogen atoms). The all-atom clashscore for this structure is 3.

All (43) close contacts within the same asymmetric unit are listed below, sorted by their clash magnitude.

Atom-1	Atom-2	Interatomic distance (Å)	Clash overlap (Å)
2:B:801:HEM:HBA2	4:B:803:Q13:H20	1.54	0.89
2:A:801:HEM:HMC2	2:A:801:HEM:HBC2	1.70	0.72
1:A:609:GLU:HG3	7:A:935:HOH:O	1.89	0.71
1:A:337:LEU:HD21	4:A:803:Q13:H3	1.81	0.62
2:B:801:HEM:CBA	4:B:803:Q13:H20	2.26	0.62
1:B:364:GLN:NE2	7:B:1095:HOH:O	2.28	0.59
1:A:701[B]:THR:HG22	1:A:702:PRO:HA	1.84	0.58
1:A:321:THR:HG23	1:A:322:LEU:HG	1.88	0.55
1:A:523:LEU:HD22	1:A:531:PRO:HB2	1.88	0.54
2:B:801:HEM:HBB2	2:B:801:HEM:HHC	1.91	0.52
1:A:701[B]:THR:CG2	1:A:702:PRO:HA	2.40	0.50
2:A:801:HEM:HBA2	4:A:803:Q13:H21	1.93	0.50
1:A:330:ILE:HD11	1:B:696:LEU:HD22	1.95	0.49
1:A:480:ILE:HD13	1:A:541:VAL:HG13	1.96	0.48
1:A:605:ASN:ND2	7:A:921:HOH:O	2.44	0.47
2:A:801:HEM:CBA	4:A:803:Q13:H21	2.44	0.47
1:A:380:ARG:HD3	1:A:400:GLU:OE1	2.15	0.47
1:A:676:TRP:CE2	1:A:680:VAL:HG21	2.50	0.47
1:A:436:HIS:CD2	1:A:534:PHE:HE2	2.32	0.46
1:B:409:TRP:CE3	1:B:421:TRP:HA	2.50	0.46
2:B:801:HEM:HBA2	4:B:803:Q13:C08	2.37	0.46
1:A:475:TRP:HB2	1:A:523:LEU:HB3	1.97	0.46
1:A:330:ILE:HD11	1:B:696:LEU:HB3	1.98	0.45
1:A:701[B]:THR:HG22	7:A:928:HOH:O	2.17	0.44
1:B:615:ASP:HA	7:B:1060:HOH:O	2.18	0.44
1:B:403:TYR:CE1	1:B:407:HIS:CE1	3.06	0.44
1:B:336:MET:HE1	3:B:802:H4B:H9	2.00	0.43
1:B:336:MET:HE2	1:B:336:MET:HB2	1.71	0.43
1:B:337:LEU:HD21	4:B:803:Q13:H3	2.01	0.42
1:B:485:TYR:CE1	1:B:514:ARG:HA	2.54	0.42
1:A:403:TYR:CE1	1:A:407:HIS:CE1	3.08	0.42

Continued on next page...

Continued from previous page...

Atom-1	Atom-2	Interatomic distance (Å)	Clash overlap (Å)
2:A:801:HEM:HHC	2:A:801:HEM:HBB2	2.02	0.42
1:A:701[A]:THR:HG23	7:A:1006:HOH:O	2.19	0.41
1:B:525:GLN:HG3	1:B:529:ASN:O	2.20	0.41
1:A:628:GLN:HG2	1:B:631:VAL:HG11	2.02	0.41
1:B:355:PHE:CE1	1:B:385:ASN:HB2	2.55	0.41
1:A:359:LYS:HA	1:A:381:LEU:HD11	2.02	0.40
1:A:478:GLN:HB2	1:A:481:ARG:HG3	2.03	0.40
1:B:504:ILE:O	1:B:508:GLN:HG2	2.21	0.40
1:B:493:LEU:HD21	1:B:514:ARG:O	2.21	0.40
1:B:478:GLN:HA	1:B:566:ALA:O	2.22	0.40
1:A:299:ARG:HG3	1:A:318:LEU:HD21	2.03	0.40
1:B:322:LEU:HD12	1:B:699:ARG:HB3	2.03	0.40

There are no symmetry-related clashes.

5.3 Torsion angles ⓘ

5.3.1 Protein backbone ⓘ

In the following table, the Percentiles column shows the percent Ramachandran outliers of the chain as a percentile score with respect to all X-ray entries followed by that with respect to entries of similar resolution.

The Analysed column shows the number of residues for which the backbone conformation was analysed, and the total number of residues.

Mol	Chain	Analysed	Favoured	Allowed	Outliers	Percentiles	
1	A	405/422 (96%)	394 (97%)	11 (3%)	0	100	100
1	B	410/422 (97%)	404 (98%)	6 (2%)	0	100	100
All	All	815/844 (97%)	798 (98%)	17 (2%)	0	100	100

There are no Ramachandran outliers to report.

5.3.2 Protein sidechains ⓘ

In the following table, the Percentiles column shows the percent sidechain outliers of the chain as a percentile score with respect to all X-ray entries followed by that with respect to entries of similar resolution.

The Analysed column shows the number of residues for which the sidechain conformation was

analysed, and the total number of residues.

Mol	Chain	Analysed	Rotameric	Outliers	Percentiles	
1	A	365/377 (97%)	351 (96%)	14 (4%)	36	17
1	B	369/377 (98%)	361 (98%)	8 (2%)	55	38
All	All	734/754 (97%)	712 (97%)	22 (3%)	44	26

All (22) residues with a non-rotameric sidechain are listed below:

Mol	Chain	Res	Type
1	A	319	LYS
1	A	336	MET
1	A	371	ARG
1	A	380	ARG
1	A	507	GLN
1	A	514	ARG
1	A	523	LEU
1	A	547	ARG
1	A	550	LYS
1	A	555	LYS
1	A	569	ASN
1	A	620	LYS
1	A	645	LYS
1	A	715	VAL
1	B	336	MET
1	B	353	GLN
1	B	382	GLU
1	B	390	SER
1	B	392	SER
1	B	540	LEU
1	B	547	ARG
1	B	717	LYS

Some sidechains can be flipped to improve hydrogen bonding and reduce clashes. All (14) such sidechains are listed below:

Mol	Chain	Res	Type
1	A	454	ASN
1	A	527	ASN
1	A	569	ASN
1	A	605	ASN
1	A	697	ASN
1	B	425	GLN

Continued on next page...

Continued from previous page...

Mol	Chain	Res	Type
1	B	440	ASN
1	B	454	ASN
1	B	507	GLN
1	B	527	ASN
1	B	535	GLN
1	B	601	ASN
1	B	605	ASN
1	B	697	ASN

5.3.3 RNA [i](#)

There are no RNA molecules in this entry.

5.4 Non-standard residues in protein, DNA, RNA chains [i](#)

There are no non-standard protein/DNA/RNA residues in this entry.

5.5 Carbohydrates [i](#)

There are no carbohydrates in this entry.

5.6 Ligand geometry [i](#)

Of 9 ligands modelled in this entry, 1 is monoatomic - leaving 8 for Mogul analysis.

In the following table, the Counts columns list the number of bonds (or angles) for which Mogul statistics could be retrieved, the number of bonds (or angles) that are observed in the model and the number of bonds (or angles) that are defined in the Chemical Component Dictionary. The Link column lists molecule types, if any, to which the group is linked. The Z score for a bond length (or angle) is the number of standard deviations the observed value is removed from the expected value. A bond length (or angle) with $|Z| > 2$ is considered an outlier worth inspection. RMSZ is the root-mean-square of all Z scores of the bond lengths (or angles).

Mol	Type	Chain	Res	Link	Bond lengths			Bond angles		
					Counts	RMSZ	# Z > 2	Counts	RMSZ	# Z > 2
2	HEM	A	801	1	27,50,50	1.02	1 (3%)	17,82,82	1.61	4 (23%)
3	H4B	A	802	-	15,18,18	0.97	2 (13%)	11,26,26	2.37	5 (45%)
4	Q13	A	803	-	26,26,26	1.03	1 (3%)	30,35,35	2.46	7 (23%)
5	ACT	A	804	-	1,3,3	1.75	0	0,3,3	0.00	-
2	HEM	B	801	1	27,50,50	1.09	4 (14%)	17,82,82	1.63	3 (17%)

Mol	Type	Chain	Res	Link	Bond lengths			Bond angles		
					Counts	RMSZ	# Z > 2	Counts	RMSZ	# Z > 2
3	H4B	B	802	-	15,18,18	1.10	0	11,26,26	2.41	5 (45%)
4	Q13	B	803	-	26,26,26	1.00	2 (7%)	30,35,35	2.66	9 (30%)
5	ACT	B	804	-	1,3,3	1.39	0	0,3,3	0.00	-

In the following table, the Chirals column lists the number of chiral outliers, the number of chiral centers analysed, the number of these observed in the model and the number defined in the Chemical Component Dictionary. Similar counts are reported in the Torsion and Rings columns. '-' means no outliers of that kind were identified.

Mol	Type	Chain	Res	Link	Chirals	Torsions	Rings
2	HEM	A	801	1	-	0/6/54/54	0/0/8/8
3	H4B	A	802	-	-	0/8/17/17	0/2/2/2
4	Q13	A	803	-	-	0/14/15/15	0/2/2/2
5	ACT	A	804	-	-	0/0/0/0	0/0/0/0
2	HEM	B	801	1	-	0/6/54/54	0/0/8/8
3	H4B	B	802	-	-	0/8/17/17	0/2/2/2
4	Q13	B	803	-	-	0/14/15/15	0/2/2/2
5	ACT	B	804	-	-	0/0/0/0	0/0/0/0

All (10) bond length outliers are listed below:

Mol	Chain	Res	Type	Atoms	Z	Observed(Å)	Ideal(Å)
2	A	801	HEM	C3B-C2B	-3.48	1.35	1.40
2	B	801	HEM	C3B-C2B	-2.50	1.36	1.40
4	B	803	Q13	C08-C06	2.01	1.55	1.50
2	B	801	HEM	C4A-NA	2.03	1.40	1.36
4	B	803	Q13	O15-C13	2.10	1.45	1.43
2	B	801	HEM	C1A-NA	2.15	1.40	1.36
3	A	802	H4B	C2-N2	2.21	1.38	1.33
3	A	802	H4B	C4-N3	2.21	1.37	1.33
2	B	801	HEM	C4D-C3D	2.25	1.47	1.42
4	A	803	Q13	C08-C06	2.29	1.56	1.50

All (33) bond angle outliers are listed below:

Mol	Chain	Res	Type	Atoms	Z	Observed(°)	Ideal(°)
4	B	803	Q13	C05-C06-N01	-5.10	117.53	122.91
4	A	803	Q13	C05-C06-N01	-4.36	118.32	122.91
2	A	801	HEM	CBD-CAD-C3D	-3.99	104.85	112.47
4	B	803	Q13	C25-C26-N21	-3.79	118.92	122.91
3	A	802	H4B	N3-C2-N1	-3.64	119.64	125.43
2	B	801	HEM	CBA-CAA-C2A	-3.51	105.77	112.48

Continued on next page...

Continued from previous page...

Mol	Chain	Res	Type	Atoms	Z	Observed(°)	Ideal(°)
4	A	803	Q13	C25-C26-N21	-3.45	119.27	122.91
3	B	802	H4B	N3-C2-N1	-3.29	120.19	125.43
2	B	801	HEM	CBD-CAD-C3D	-3.23	106.30	112.47
2	A	801	HEM	CBA-CAA-C2A	-2.73	107.27	112.48
4	B	803	Q13	C07-C04-C05	-2.49	117.33	120.96
2	A	801	HEM	CMA-C3A-C4A	-2.02	125.36	128.46
2	B	801	HEM	CMC-C2C-C3C	2.05	128.60	124.88
3	B	802	H4B	N2-C2-N3	2.13	120.60	117.25
2	A	801	HEM	CMC-C2C-C3C	2.22	128.93	124.88
4	A	803	Q13	C16-C26-N21	2.35	120.56	115.74
4	B	803	Q13	C16-C26-N21	2.38	120.63	115.74
3	A	802	H4B	N2-C2-N3	2.44	121.08	117.25
4	A	803	Q13	C08-C06-C05	2.53	124.59	121.08
3	A	802	H4B	C4-N3-C2	2.73	119.99	116.06
4	B	803	Q13	C08-C06-N01	2.76	121.40	115.74
4	B	803	Q13	N22-C22-N21	2.76	121.07	116.56
4	A	803	Q13	N22-C22-N21	2.89	121.28	116.56
3	B	802	H4B	C4-N3-C2	3.01	120.39	116.06
3	B	802	H4B	C2-N1-C8A	3.05	121.35	114.50
3	A	802	H4B	C4-C4A-C8A	3.52	117.75	114.56
3	A	802	H4B	C2-N1-C8A	3.79	123.02	114.50
4	B	803	Q13	O09-C10-C11	3.96	117.17	108.90
3	B	802	H4B	C4-C4A-C8A	5.08	119.16	114.56
4	A	803	Q13	C02-N01-C06	7.49	123.44	118.17
4	B	803	Q13	C22-N21-C26	7.56	123.48	118.17
4	A	803	Q13	C22-N21-C26	7.63	123.53	118.17
4	B	803	Q13	C02-N01-C06	7.68	123.56	118.17

There are no chirality outliers.

There are no torsion outliers.

There are no ring outliers.

5 monomers are involved in 11 short contacts:

Mol	Chain	Res	Type	Clashes	Symm-Clashes
2	A	801	HEM	4	0
4	A	803	Q13	3	0
2	B	801	HEM	4	0
3	B	802	H4B	1	0
4	B	803	Q13	4	0

5.7 Other polymers [i](#)

There are no such residues in this entry.

5.8 Polymer linkage issues [i](#)

There are no chain breaks in this entry.

6 Fit of model and data

6.1 Protein, DNA and RNA chains

In the following table, the column labelled ‘#RSRZ > 2’ contains the number (and percentage) of RSRZ outliers, followed by percent RSRZ outliers for the chain as percentile scores relative to all X-ray entries and entries of similar resolution. The OWAB column contains the minimum, median, 95th percentile and maximum values of the occupancy-weighted average B-factor per residue. The column labelled ‘Q < 0.9’ lists the number of (and percentage) of residues with an average occupancy less than 0.9.

Mol	Chain	Analysed	<RSRZ>	#RSRZ>2	OWAB(Å ²)	Q<0.9
1	A	407/422 (96%)	0.52	46 (11%) 5 5	20, 40, 72, 92	0
1	B	411/422 (97%)	0.16	19 (4%) 32 31	19, 32, 57, 76	0
All	All	818/844 (96%)	0.34	65 (7%) 12 13	19, 36, 69, 92	0

All (65) RSRZ outliers are listed below:

Mol	Chain	Res	Type	RSRZ
1	A	488	PRO	6.4
1	A	355	PHE	6.2
1	A	715	VAL	6.1
1	B	300	PHE	5.9
1	A	716	TRP	5.4
1	B	718	GLY	4.5
1	A	352	ASP	4.4
1	A	486	LYS	4.2
1	B	350	THR	4.2
1	A	507	GLN	4.2
1	A	351	LYS	4.1
1	A	321	THR	3.7
1	A	300	PHE	3.6
1	B	619	ARG	3.3
1	A	388	ILE	3.2
1	A	713	THR	3.2
1	A	386	LYS	3.2
1	A	370	LYS	3.1
1	B	348	VAL	3.1
1	B	321	THR	3.1
1	A	490	GLY	2.9
1	A	469	LYS	2.8
1	A	390	SER	2.8
1	A	491	SER	2.7

Continued on next page...

Continued from previous page...

Mol	Chain	Res	Type	RSRZ
1	A	551	PHE	2.6
1	A	511	LYS	2.6
1	B	680	VAL	2.6
1	A	373	GLY	2.6
1	B	677	VAL	2.6
1	B	616	LEU	2.5
1	A	385	ASN	2.5
1	A	350	THR	2.5
1	A	676	TRP	2.5
1	B	620	LYS	2.5
1	A	381	LEU	2.5
1	A	299	ARG	2.5
1	B	566	ALA	2.4
1	A	508	GLN	2.4
1	A	706	TYR	2.4
1	B	352	ASP	2.4
1	A	714	HIS	2.4
1	B	567	VAL	2.4
1	A	552	ASP	2.3
1	B	691	PHE	2.3
1	A	489	ASP	2.3
1	A	392	SER	2.3
1	A	677	VAL	2.3
1	B	615	ASP	2.3
1	A	389	GLU	2.2
1	A	369	ILE	2.2
1	B	389	GLU	2.2
1	A	493	LEU	2.2
1	A	382	GLU	2.2
1	A	356	PRO	2.2
1	A	503	GLU	2.2
1	B	355	PHE	2.1
1	A	678	TRP	2.1
1	A	371	ARG	2.1
1	A	514	ARG	2.1
1	A	554	PHE	2.1
1	A	680	VAL	2.1
1	B	353	GLN	2.0
1	A	712	ASN	2.0
1	A	492	THR	2.0
1	B	667	ARG	2.0

6.2 Non-standard residues in protein, DNA, RNA chains [i](#)

There are no non-standard protein/DNA/RNA residues in this entry.

6.3 Carbohydrates [i](#)

There are no carbohydrates in this entry.

6.4 Ligands [i](#)

In the following table, the Atoms column lists the number of modelled atoms in the group and the number defined in the chemical component dictionary. The B-factors column lists the minimum, median, 95th percentile and maximum values of B factors of atoms in the group. The column labelled 'Q< 0.9' lists the number of atoms with occupancy less than 0.9.

Mol	Type	Chain	Res	Atoms	RSCC	RSR	B-factors(\AA^2)	Q<0.9
5	ACT	A	804	4/4	0.87	0.29	66,71,72,75	0
4	Q13	A	803	25/25	0.88	0.20	25,44,60,62	0
5	ACT	B	804	4/4	0.89	0.17	49,56,58,60	0
4	Q13	B	803	25/25	0.90	0.21	26,41,50,51	0
3	H4B	B	802	17/17	0.95	0.17	24,26,30,30	0
3	H4B	A	802	17/17	0.96	0.12	25,26,28,30	0
2	HEM	A	801	43/43	0.97	0.14	23,25,30,31	0
2	HEM	B	801	43/43	0.98	0.14	20,22,29,32	0
6	ZN	A	805	1/1	1.00	0.09	29,29,29,29	0

6.5 Other polymers [i](#)

There are no such residues in this entry.