



Full wwPDB X-ray Structure Validation Report ⓘ

Mar 13, 2018 – 10:25 pm GMT

PDB ID : 5KB6
Title : High-resolution structure of the adenosine kinase from *Mus musculus* in complex with adenosine
Authors : Oliveira, R.R.; Neto, R.M.; Polo, C.C.; Tonoli, C.C.C.; Murakami, M.T.; Franchini, K.G.
Deposited on : 2016-06-02
Resolution : 1.20 Å(reported)

This is a Full wwPDB X-ray Structure Validation Report for a publicly released PDB entry.

We welcome your comments at validation@mail.wwpdb.org

A user guide is available at

<https://www.wwpdb.org/validation/2017/XrayValidationReportHelp>

with specific help available everywhere you see the ⓘ symbol.

The following versions of software and data (see [references ⓘ](#)) were used in the production of this report:

MolProbity : 4.02b-467
Mogul : 1.7.3 (157068), CSD as539be (2018)
Xtriage (Phenix) : 1.13
EDS : trunk31020
Percentile statistics : 20171227.v01 (using entries in the PDB archive December 27th 2017)
Refmac : 5.8.0158
CCP4 : 7.0 (Gargrove)
Ideal geometry (proteins) : Engh & Huber (2001)
Ideal geometry (DNA, RNA) : Parkinson et al. (1996)
Validation Pipeline (wwPDB-VP) : trunk31020

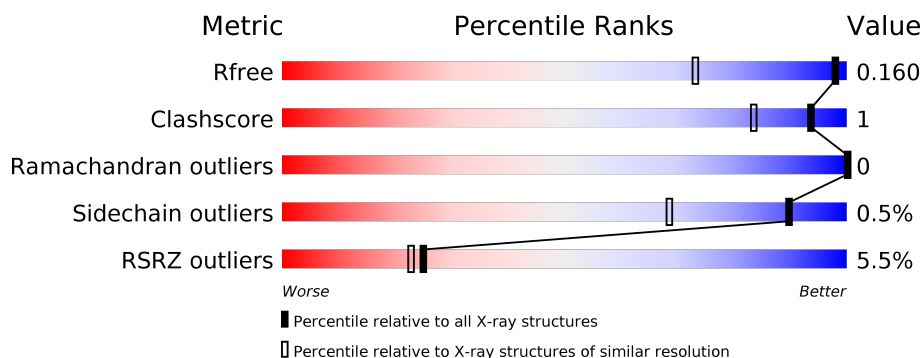
1 Overall quality at a glance

The following experimental techniques were used to determine the structure:

X-RAY DIFFRACTION

The reported resolution of this entry is 1.20 Å.

Percentile scores (ranging between 0-100) for global validation metrics of the entry are shown in the following graphic. The table shows the number of entries on which the scores are based.



Metric	Whole archive (#Entries)	Similar resolution (#Entries, resolution range(Å))
R_{free}	111664	1010 (1.22-1.18)
Clashscore	122126	1064 (1.22-1.18)
Ramachandran outliers	120053	1024 (1.22-1.18)
Sidechain outliers	120020	1023 (1.22-1.18)
RSRZ outliers	108989	1278 (1.24-1.16)

The table below summarises the geometric issues observed across the polymeric chains and their fit to the electron density. The red, orange, yellow and green segments on the lower bar indicate the fraction of residues that contain outliers for ≥ 3 , 2, 1 and 0 types of geometric quality criteria. A grey segment represents the fraction of residues that are not modelled. The numeric value for each fraction is indicated below the corresponding segment, with a dot representing fractions $\leq 5\%$. The upper red bar (where present) indicates the fraction of residues that have poor fit to the electron density. The numeric value is given above the bar.

Mol	Chain	Length	Quality of chain
1	A	363	<div> <div>5%</div> <div> <div></div> <div>92%</div> <div>6%</div> </div> </div>
1	B	363	<div> <div>6%</div> <div> <div></div> <div>93%</div> <div>6%</div> </div> </div>

The following table lists non-polymeric compounds, carbohydrate monomers and non-standard residues in protein, DNA, RNA chains that are outliers for geometric or electron-density-fit criteria:

Mol	Type	Chain	Res	Chirality	Geometry	Clashes	Electron density
6	ACT	A	406	-	-	X	-
6	ACT	B	405	-	-	X	-

2 Entry composition [i](#)

There are 7 unique types of molecules in this entry. The entry contains 11549 atoms, of which 5516 are hydrogens and 0 are deuteriums.

In the tables below, the ZeroOcc column contains the number of atoms modelled with zero occupancy, the AltConf column contains the number of residues with at least one atom in alternate conformation and the Trace column contains the number of residues modelled with at most 2 atoms.

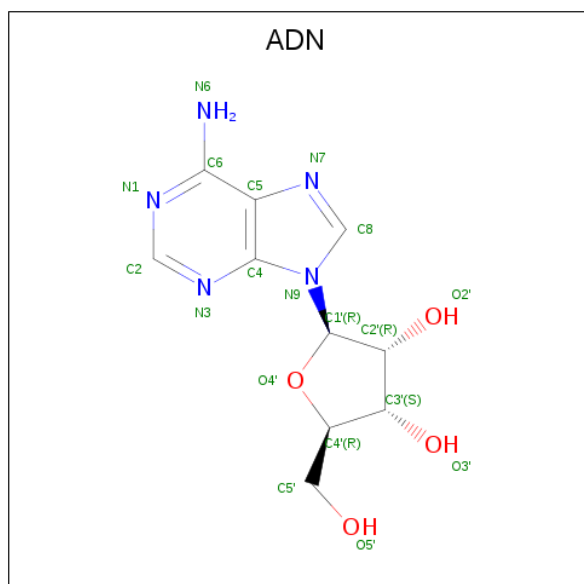
- Molecule 1 is a protein called Adenosine kinase.

Mol	Chain	Residues	Atoms						ZeroOcc	AltConf	Trace
1	A	343	Total	C	H	N	O	S	50	7	0
			5453	1741	2721	465	516	10			
1	B	343	Total	C	H	N	O	S	50	5	0
			5432	1735	2709	463	515	10			

There are 4 discrepancies between the modelled and reference sequences:

Chain	Residue	Modelled	Actual	Comment	Reference
A	-1	GLY	-	expression tag	UNP P55264
A	0	SER	-	expression tag	UNP P55264
B	-1	GLY	-	expression tag	UNP P55264
B	0	SER	-	expression tag	UNP P55264

- Molecule 2 is ADENOSINE (three-letter code: ADN) (formula: $C_{10}H_{13}N_5O_4$).



Mol	Chain	Residues	Atoms					ZeroOcc	AltConf
2	A	1	Total	C	H	N	O	2	0
			32	10	13	5	4		
2	B	1	Total	C	H	N	O	2	0
			32	10	13	5	4		

- Molecule 3 is SULFATE ION (three-letter code: SO4) (formula: O₄S).



Mol	Chain	Residues	Atoms			ZeroOcc	AltConf
3	A	1	Total	O	S	0	0
			5	4	1		
3	B	1	Total	O	S	0	0
			5	4	1		

- Molecule 4 is CHLORIDE ION (three-letter code: CL) (formula: Cl).

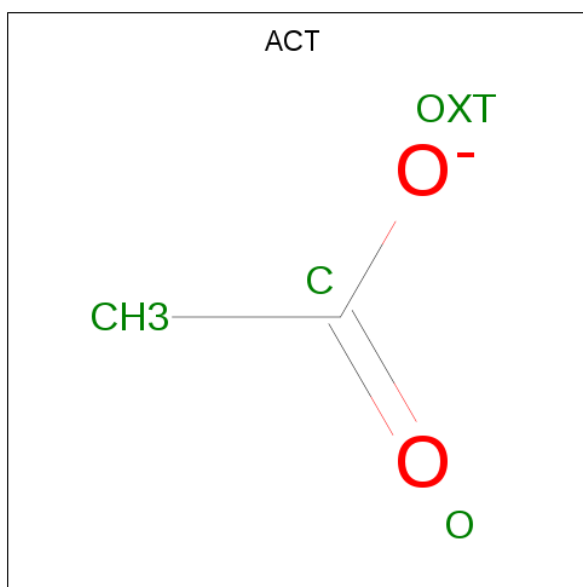
Mol	Chain	Residues	Atoms		ZeroOcc	AltConf
4	B	1	Total	Cl	0	0
			1	1		
4	A	1	Total	Cl	0	0
			1	1		

- Molecule 5 is TETRAETHYLENE GLYCOL (three-letter code: PG4) (formula: C₈H₁₈O₅).



Mol	Chain	Residues	Atoms				ZeroOcc	AltConf
5	A	1	Total	C	H	O	1	0
			31	8	18	5		
5	A	1	Total	C	H	O	1	0
			31	8	18	5		
5	B	1	Total	C	H	O	1	0
			31	8	18	5		

- Molecule 6 is ACETATE ION (three-letter code: ACT) (formula: C₂H₃O₂).



Mol	Chain	Residues	Atoms				ZeroOcc	AltConf
6	A	1	Total	C	H	O	0	0
			7	2	3	2		

Continued on next page...

Continued from previous page...

Mol	Chain	Residues	Atoms				ZeroOcc	AltConf
6	B	1	Total	C	H	O	0	0
			7	2	3	2		

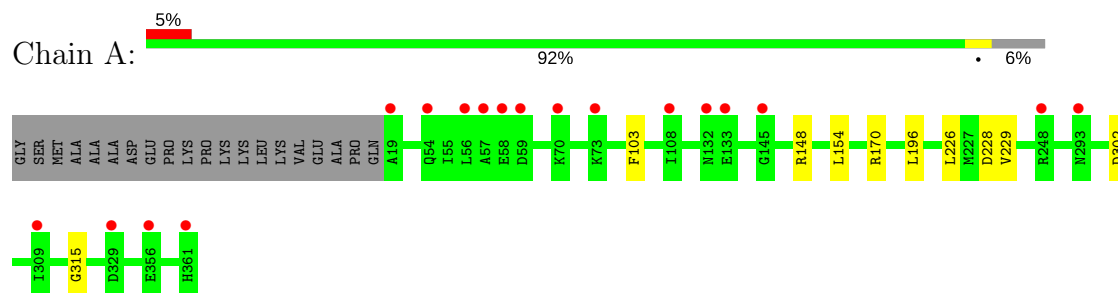
- Molecule 7 is water.

Mol	Chain	Residues	Atoms		ZeroOcc	AltConf
7	A	250	Total	O	0	0
			250	250		
7	B	231	Total	O	0	0
			231	231		

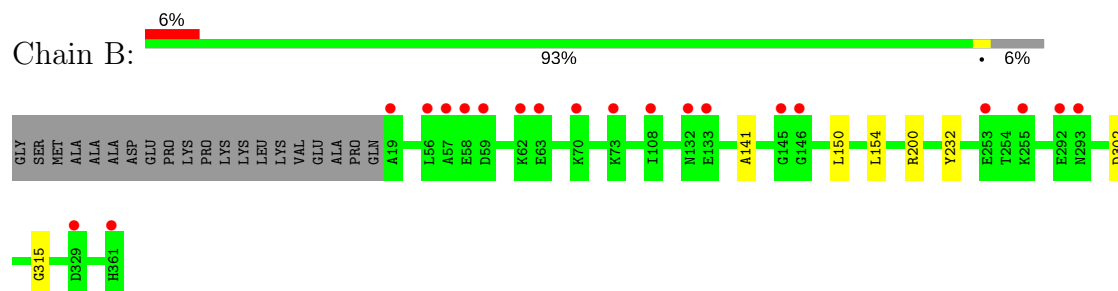
3 Residue-property plots [i](#)

These plots are drawn for all protein, RNA and DNA chains in the entry. The first graphic for a chain summarises the proportions of the various outlier classes displayed in the second graphic. The second graphic shows the sequence view annotated by issues in geometry and electron density. Residues are color-coded according to the number of geometric quality criteria for which they contain at least one outlier: green = 0, yellow = 1, orange = 2 and red = 3 or more. A red dot above a residue indicates a poor fit to the electron density ($RSRZ > 2$). Stretches of 2 or more consecutive residues without any outlier are shown as a green connector. Residues present in the sample, but not in the model, are shown in grey.

- Molecule 1: Adenosine kinase



- Molecule 1: Adenosine kinase



4 Data and refinement statistics

Property	Value	Source
Space group	P 1 21 1	Depositor
Cell constants a, b, c, α , β , γ	50.84Å 82.16Å 89.19Å 90.00° 92.69° 90.00°	Depositor
Resolution (Å)	20.76 – 1.20 20.76 – 1.20	Depositor EDS
% Data completeness (in resolution range)	99.7 (20.76-1.20) 99.7 (20.76-1.20)	Depositor EDS
R_{merge}	0.05	Depositor
R_{sym}	(Not available)	Depositor
$\langle I/\sigma(I) \rangle$ ¹	2.27 (at 1.20Å)	Xtriage
Refinement program	REFMAC 5.8.0135	Depositor
R, R_{free}	0.141 , 0.159 0.142 , 0.160	Depositor DCC
R_{free} test set	11429 reflections (5.01%)	wwPDB-VP
Wilson B-factor (Å ²)	12.3	Xtriage
Anisotropy	0.595	Xtriage
Bulk solvent k_{sol} (e/Å ³), B_{sol} (Å ²)	0.52 , 52.7	EDS
L-test for twinning ²	$\langle L \rangle = 0.49$, $\langle L^2 \rangle = 0.32$	Xtriage
Estimated twinning fraction	0.069 for h,-k,-l	Xtriage
F_o, F_c correlation	0.98	EDS
Total number of atoms	11549	wwPDB-VP
Average B, all atoms (Å ²)	19.0	wwPDB-VP

Xtriage's analysis on translational NCS is as follows: *The largest off-origin peak in the Patterson function is 4.82% of the height of the origin peak. No significant pseudotranslation is detected.*

¹Intensities estimated from amplitudes.

²Theoretical values of $\langle |L| \rangle$, $\langle L^2 \rangle$ for acentric reflections are 0.5, 0.333 respectively for untwinned datasets, and 0.375, 0.2 for perfectly twinned datasets.

5 Model quality [i](#)

5.1 Standard geometry [i](#)

Bond lengths and bond angles in the following residue types are not validated in this section: ADN, PG4, ACT, SO4, CL

The Z score for a bond length (or angle) is the number of standard deviations the observed value is removed from the expected value. A bond length (or angle) with $|Z| > 5$ is considered an outlier worth inspection. RMSZ is the root-mean-square of all Z scores of the bond lengths (or angles).

Mol	Chain	Bond lengths		Bond angles	
		RMSZ	$\# Z > 5$	RMSZ	$\# Z > 5$
1	A	0.46	0/2808	0.71	3/3795 (0.1%)
1	B	0.49	0/2790	0.68	0/3772
All	All	0.47	0/5598	0.69	3/7567 (0.0%)

There are no bond length outliers.

All (3) bond angle outliers are listed below:

Mol	Chain	Res	Type	Atoms	Z	Observed(°)	Ideal(°)
1	A	103	PHE	CB-CG-CD2	-5.57	116.90	120.80
1	A	103	PHE	CB-CG-CD1	5.35	124.55	120.80
1	A	170	ARG	NE-CZ-NH1	5.09	122.85	120.30

There are no chirality outliers.

There are no planarity outliers.

5.2 Too-close contacts [i](#)

In the following table, the Non-H and H(model) columns list the number of non-hydrogen atoms and hydrogen atoms in the chain respectively. The H(added) column lists the number of hydrogen atoms added and optimized by MolProbity. The Clashes column lists the number of clashes within the asymmetric unit, whereas Symm-Clashes lists symmetry related clashes.

Mol	Chain	Non-H	H(model)	H(added)	Clashes	Symm-Clashes
1	A	2732	2721	2719	9	0
1	B	2723	2709	2703	8	0
2	A	19	13	13	1	0
2	B	19	13	13	1	0
3	A	5	0	0	0	0
3	B	5	0	0	0	0

Continued on next page...

Continued from previous page...

Mol	Chain	Non-H	H(model)	H(added)	Clashes	Symm-Clashes
4	A	1	0	0	0	0
4	B	1	0	0	0	0
5	A	26	36	36	0	0
5	B	13	18	18	0	0
6	A	4	3	3	3	0
6	B	4	3	3	3	0
7	A	250	0	0	1	0
7	B	231	0	0	1	0
All	All	6033	5516	5508	16	0

The all-atom clashscore is defined as the number of clashes found per 1000 atoms (including hydrogen atoms). The all-atom clashscore for this structure is 1.

All (16) close contacts within the same asymmetric unit are listed below, sorted by their clash magnitude.

Atom-1	Atom-2	Interatomic distance (Å)	Clash overlap (Å)
1:B:315:GLY:H	6:B:405:ACT:H2	1.46	0.79
1:A:196:LEU:HD22	1:B:200[B]:ARG:NH2	2.17	0.60
1:B:315:GLY:H	6:B:405:ACT:CH3	2.15	0.59
1:A:228[B]:ASP:OD1	1:B:200[B]:ARG:HD3	2.03	0.58
1:A:228[B]:ASP:OD1	1:B:200[B]:ARG:CD	2.55	0.55
1:A:315:GLY:H	6:A:406:ACT:H1	1.73	0.54
1:A:315:GLY:H	6:A:406:ACT:CH3	2.21	0.53
1:B:200[B]:ARG:NH1	1:B:232:TYR:OH	2.42	0.52
1:A:196:LEU:HD23	1:A:229[B]:VAL:HG12	1.93	0.50
1:A:196:LEU:CD2	1:A:229[B]:VAL:HG12	2.43	0.49
6:A:406:ACT:H3	7:A:627:HOH:O	2.14	0.48
1:B:302:ASP:O	2:B:401:ADN:H2	2.14	0.48
1:A:226:LEU:O	1:A:229[A]:VAL:HG12	2.16	0.46
1:A:302:ASP:O	2:A:401:ADN:H2	2.17	0.43
6:B:405:ACT:H1	7:B:643:HOH:O	2.20	0.41
1:B:141:ALA:HA	1:B:150:LEU:HD23	2.03	0.41

There are no symmetry-related clashes.

5.3 Torsion angles

5.3.1 Protein backbone

In the following table, the Percentiles column shows the percent Ramachandran outliers of the chain as a percentile score with respect to all X-ray entries followed by that with respect to entries of similar resolution.

The Analysed column shows the number of residues for which the backbone conformation was analysed, and the total number of residues.

Mol	Chain	Analysed	Favoured	Allowed	Outliers	Percentiles	
1	A	348/363 (96%)	340 (98%)	8 (2%)	0	100	100
1	B	346/363 (95%)	337 (97%)	9 (3%)	0	100	100
All	All	694/726 (96%)	677 (98%)	17 (2%)	0	100	100

There are no Ramachandran outliers to report.

5.3.2 Protein sidechains

In the following table, the Percentiles column shows the percent sidechain outliers of the chain as a percentile score with respect to all X-ray entries followed by that with respect to entries of similar resolution.

The Analysed column shows the number of residues for which the sidechain conformation was analysed, and the total number of residues.

Mol	Chain	Analysed	Rotameric	Outliers	Percentiles	
1	A	292/300 (97%)	290 (99%)	2 (1%)	85	61
1	B	290/300 (97%)	289 (100%)	1 (0%)	93	81
All	All	582/600 (97%)	579 (100%)	3 (0%)	90	68

All (3) residues with a non-rotameric sidechain are listed below:

Mol	Chain	Res	Type
1	A	148	ARG
1	A	154	LEU
1	B	154	LEU

Some sidechains can be flipped to improve hydrogen bonding and reduce clashes. There are no such sidechains identified.

5.3.3 RNA ⓘ

There are no RNA molecules in this entry.

5.4 Non-standard residues in protein, DNA, RNA chains ⓘ

There are no non-standard protein/DNA/RNA residues in this entry.

5.5 Carbohydrates ⓘ

There are no carbohydrates in this entry.

5.6 Ligand geometry ⓘ

Of 11 ligands modelled in this entry, 2 are monoatomic - leaving 9 for Mogul analysis.

In the following table, the Counts columns list the number of bonds (or angles) for which Mogul statistics could be retrieved, the number of bonds (or angles) that are observed in the model and the number of bonds (or angles) that are defined in the Chemical Component Dictionary. The Link column lists molecule types, if any, to which the group is linked. The Z score for a bond length (or angle) is the number of standard deviations the observed value is removed from the expected value. A bond length (or angle) with $|Z| > 2$ is considered an outlier worth inspection. RMSZ is the root-mean-square of all Z scores of the bond lengths (or angles).

Mol	Type	Chain	Res	Link	Bond lengths			Bond angles		
					Counts	RMSZ	$\# Z > 2$	Counts	RMSZ	$\# Z > 2$
2	ADN	A	401	-	18,21,21	0.69	0	16,31,31	1.96	4 (25%)
3	SO4	A	402	-	4,4,4	0.38	0	6,6,6	0.75	0
5	PG4	A	404	-	12,12,12	0.35	0	11,11,11	0.46	0
5	PG4	A	405	-	12,12,12	0.48	0	11,11,11	0.59	0
6	ACT	A	406	-	1,3,3	3.57	1 (100%)	0,3,3	0.00	-
2	ADN	B	401	-	18,21,21	0.82	1 (5%)	16,31,31	2.01	2 (12%)
3	SO4	B	402	-	4,4,4	0.57	0	6,6,6	0.54	0
5	PG4	B	404	-	12,12,12	0.47	0	11,11,11	0.61	0
6	ACT	B	405	-	1,3,3	4.64	1 (100%)	0,3,3	0.00	-

In the following table, the Chirals column lists the number of chiral outliers, the number of chiral centers analysed, the number of these observed in the model and the number defined in the Chemical Component Dictionary. Similar counts are reported in the Torsion and Rings columns. '-' means no outliers of that kind were identified.

Mol	Type	Chain	Res	Link	Chirals	Torsions	Rings
2	ADN	A	401	-	-	0/2/22/22	0/3/3/3
3	SO4	A	402	-	-	0/0/0/0	0/0/0/0
5	PG4	A	404	-	-	0/10/10/10	0/0/0/0
5	PG4	A	405	-	-	0/10/10/10	0/0/0/0
6	ACT	A	406	-	-	0/0/0/0	0/0/0/0
2	ADN	B	401	-	-	0/2/22/22	0/3/3/3
3	SO4	B	402	-	-	0/0/0/0	0/0/0/0
5	PG4	B	404	-	-	0/10/10/10	0/0/0/0
6	ACT	B	405	-	-	0/0/0/0	0/0/0/0

All (3) bond length outliers are listed below:

Mol	Chain	Res	Type	Atoms	Z	Observed(Å)	Ideal(Å)
2	B	401	ADN	C5-C4	2.07	1.45	1.40
6	A	406	ACT	CH3-C	3.57	1.53	1.48
6	B	405	ACT	CH3-C	4.64	1.54	1.48

All (6) bond angle outliers are listed below:

Mol	Chain	Res	Type	Atoms	Z	Observed(°)	Ideal(°)
2	B	401	ADN	N3-C2-N1	-6.81	123.03	128.86
2	A	401	ADN	N3-C2-N1	-5.93	123.79	128.86
2	A	401	ADN	C1'-N9-C4	-2.14	122.94	126.64
2	A	401	ADN	O2'-C2'-C3'	-2.05	105.26	111.83
2	B	401	ADN	C2-N1-C6	2.80	123.51	118.75
2	A	401	ADN	C2-N1-C6	2.90	123.68	118.75

There are no chirality outliers.

There are no torsion outliers.

There are no ring outliers.

4 monomers are involved in 8 short contacts:

Mol	Chain	Res	Type	Clashes	Symm-Clashes
2	A	401	ADN	1	0
6	A	406	ACT	3	0
2	B	401	ADN	1	0
6	B	405	ACT	3	0

5.7 Other polymers ⓘ

There are no such residues in this entry.

5.8 Polymer linkage issues ⓘ

There are no chain breaks in this entry.

6 Fit of model and data ⓘ

6.1 Protein, DNA and RNA chains ⓘ

In the following table, the column labelled ‘#RSRZ > 2’ contains the number (and percentage) of RSRZ outliers, followed by percent RSRZ outliers for the chain as percentile scores relative to all X-ray entries and entries of similar resolution. The OWAB column contains the minimum, median, 95th percentile and maximum values of the occupancy-weighted average B-factor per residue. The column labelled ‘Q < 0.9’ lists the number of (and percentage) of residues with an average occupancy less than 0.9.

Mol	Chain	Analysed	<RSRZ>	#RSRZ > 2		OWAB(Å ²)	Q < 0.9
1	A	343/363 (94%)	-0.05	18 (5%)	27 25	9, 15, 34, 53	1 (0%)
1	B	343/363 (94%)	0.10	20 (5%)	23 21	10, 17, 37, 59	2 (0%)
All	All	686/726 (94%)	0.02	38 (5%)	25 23	9, 16, 35, 59	3 (0%)

All (38) RSRZ outliers are listed below:

Mol	Chain	Res	Type	RSRZ
1	B	19	ALA	7.2
1	A	19	ALA	6.2
1	A	56	LEU	5.8
1	B	361	HIS	5.8
1	B	59	ASP	4.7
1	A	361	HIS	4.5
1	B	293	ASN	4.4
1	B	56	LEU	4.4
1	B	146	GLY	4.2
1	B	73	LYS	4.1
1	B	58	GLU	3.9
1	B	70	LYS	3.9
1	A	309	ILE	3.8
1	B	57	ALA	3.7
1	A	132	ASN	3.5
1	B	132	ASN	3.5
1	A	57	ALA	3.5
1	B	108	ILE	3.4
1	A	59	ASP	3.4
1	A	58	GLU	3.1
1	B	329	ASP	3.1
1	B	145	GLY	3.0
1	A	70	LYS	2.9
1	A	108	ILE	2.7

Continued on next page...

Continued from previous page...

Mol	Chain	Res	Type	RSRZ
1	B	133	GLU	2.7
1	B	292	GLU	2.6
1	B	253	GLU	2.5
1	A	329	ASP	2.5
1	A	293	ASN	2.4
1	A	133	GLU	2.3
1	A	356	GLU	2.3
1	A	73	LYS	2.3
1	B	63	GLU	2.2
1	A	248	ARG	2.2
1	A	145	GLY	2.2
1	A	54	GLN	2.1
1	B	62	LYS	2.1
1	B	255	LYS	2.1

6.2 Non-standard residues in protein, DNA, RNA chains [i](#)

There are no non-standard protein/DNA/RNA residues in this entry.

6.3 Carbohydrates [i](#)

There are no carbohydrates in this entry.

6.4 Ligands [i](#)

In the following table, the Atoms column lists the number of modelled atoms in the group and the number defined in the chemical component dictionary. The B-factors column lists the minimum, median, 95th percentile and maximum values of B factors of atoms in the group. The column labelled 'Q< 0.9' lists the number of atoms with occupancy less than 0.9.

Mol	Type	Chain	Res	Atoms	RSCC	RSR	B-factors(Å ²)	Q<0.9
5	PG4	A	405	13/13	0.77	0.14	28,31,35,40	31
5	PG4	B	404	13/13	0.79	0.16	26,30,35,37	31
5	PG4	A	404	13/13	0.83	0.12	24,28,34,37	31
6	ACT	B	405	4/4	0.87	0.12	19,20,20,29	0
6	ACT	A	406	4/4	0.90	0.14	18,21,22,32	0
3	SO4	A	402	5/5	0.97	0.07	15,17,19,20	5
3	SO4	B	402	5/5	0.97	0.07	16,19,21,22	5
2	ADN	A	401	19/19	0.97	0.06	12,13,14,15	2
2	ADN	B	401	19/19	0.98	0.05	12,13,14,16	2

Continued on next page...

Continued from previous page...

Mol	Type	Chain	Res	Atoms	RSCC	RSR	B-factors(\AA^2)	Q<0.9
4	CL	A	403	1/1	1.00	0.06	12,12,12,12	0
4	CL	B	403	1/1	1.00	0.05	13,13,13,13	0

6.5 Other polymers [i](#)

There are no such residues in this entry.