



wwPDB/EMDataBank EM Map/Model Validation Summary Report ⓘ

Feb 21, 2018 – 04:15 pm GMT

PDB ID : 5KBU
EMDB ID: : EMD-8231
Title : Cryo-EM structure of GluA2-2xSTZ complex at 7.8 Angstrom resolution
Authors : Twomey, E.C.; Yelshanskaya, M.V.; Grassucci, R.A.; Frank, J.; Sobolevsky, A.I.
Deposited on : 2016-06-03
Resolution : 7.80 Å(reported)

This is a wwPDB/EMDataBank EM Map/Model Validation Summary Report
for a publicly released PDB/EMDB entry.

We welcome your comments at validation@mail.wwpdb.org

A user guide is available at

<https://www.wwpdb.org/validation/2017/EMValidationReportHelp>

with specific help available everywhere you see the ⓘ symbol.

MolProbity : 4.02b-467
Mogul : 1.7.3 (157068), CSD as539be (2018)
Percentile statistics : 20171227.v01 (using entries in the PDB archive December 27th 2017)
Ideal geometry (proteins) : Engh & Huber (2001)
Ideal geometry (DNA, RNA) : Parkinson et. al. (1996)
Validation Pipeline (wwPDB-VP) : trunk30686

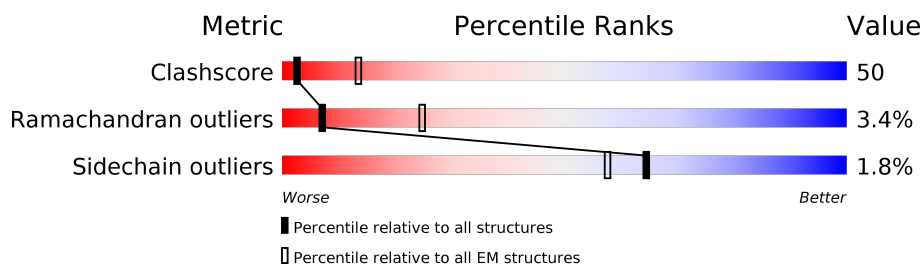
1 Overall quality at a glance

The following experimental techniques were used to determine the structure:

ELECTRON MICROSCOPY

The reported resolution of this entry is 7.80 Å.

Percentile scores (ranging between 0-100) for global validation metrics of the entry are shown in the following graphic. The table shows the number of entries on which the scores are based.



Metric	Whole archive (#Entries)	EM structures (#Entries)
Clashscore	136279	1886
Ramachandran outliers	132675	1663
Sidechain outliers	132484	1531

The table below summarises the geometric issues observed across the polymeric chains. The red, orange, yellow and green segments on the bar indicate the fraction of residues that contain outliers for ≥ 3 , 2, 1 and 0 types of geometric quality criteria. A grey segment represents the fraction of residues that are not modelled. The numeric value for each fraction is indicated below the corresponding segment, with a dot representing fractions $\leq 5\%$.

Mol	Chain	Length	Quality of chain
1	A	1034	60% 29% • • 6%
1	B	1034	56% 18% • 25%
1	C	1034	60% 29% • • 6%
1	D	1034	56% 18% • 25%

2 Entry composition

There are 3 unique types of molecules in this entry. The entry contains 25678 atoms, of which 0 are hydrogens and 0 are deuteriums.

In the tables below, the AltConf column contains the number of residues with at least one atom in alternate conformation and the Trace column contains the number of residues modelled with at most 2 atoms.

- Molecule 1 is a protein called Glutamate receptor 2, Voltage-dependent calcium channel gamma-2 subunit.

Mol	Chain	Residues	Atoms					AltConf	Trace
1	A	973	Total	C	N	O	S	0	0
			7110	4589	1138	1346	37		
1	B	779	Total	C	N	O	S	0	0
			5647	3635	902	1083	27		
1	C	973	Total	C	N	O	S	0	0
			7110	4589	1138	1346	37		
1	D	779	Total	C	N	O	S	0	0
			5647	3635	902	1083	27		

There are 92 discrepancies between the modelled and reference sequences:

Chain	Residue	Modelled	Actual	Comment	Reference
A	241	GLU	ASN	engineered mutation	UNP P19491
A	382	LEU	VAL	engineered mutation	UNP P19491
A	?	-	LEU	deletion	UNP P19491
A	?	-	THR	deletion	UNP P19491
A	?	-	GLU	deletion	UNP P19491
A	?	-	LEU	deletion	UNP P19491
A	?	-	PRO	deletion	UNP P19491
A	?	-	SER	deletion	UNP P19491
A	384	GLU	GLY	engineered mutation	UNP P19491
A	385	ASP	ASN	engineered mutation	UNP P19491
A	392	GLN	ASN	conflict	UNP P19491
A	758	LEU	VAL	engineered mutation	UNP P19491
A	827	GLY	-	linker	UNP P19491
A	828	THR	-	linker	UNP P19491
A	1047	ASP	ASN	conflict	UNP O88602
A	1208	THR	-	expression tag	UNP O88602
A	1209	GLY	-	expression tag	UNP O88602
A	1210	GLY	-	expression tag	UNP O88602
A	1211	LEU	-	expression tag	UNP O88602
A	1212	VAL	-	expression tag	UNP O88602
A	1213	PRO	-	expression tag	UNP O88602

Continued on next page...

Continued from previous page...

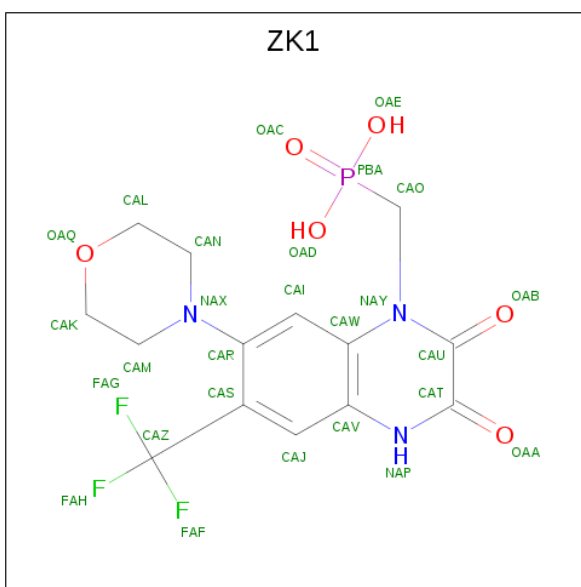
Chain	Residue	Modelled	Actual	Comment	Reference
A	1214	ARG	-	expression tag	UNP O88602
A	1215	GLY	-	expression tag	UNP O88602
B	241	GLU	ASN	engineered mutation	UNP P19491
B	382	LEU	VAL	engineered mutation	UNP P19491
B	?	-	LEU	deletion	UNP P19491
B	?	-	THR	deletion	UNP P19491
B	?	-	GLU	deletion	UNP P19491
B	?	-	LEU	deletion	UNP P19491
B	?	-	PRO	deletion	UNP P19491
B	?	-	SER	deletion	UNP P19491
B	384	GLU	GLY	engineered mutation	UNP P19491
B	385	ASP	ASN	engineered mutation	UNP P19491
B	392	GLN	ASN	conflict	UNP P19491
B	758	LEU	VAL	engineered mutation	UNP P19491
B	827	GLY	-	linker	UNP P19491
B	828	THR	-	linker	UNP P19491
B	1047	ASP	ASN	conflict	UNP O88602
B	1208	THR	-	expression tag	UNP O88602
B	1209	GLY	-	expression tag	UNP O88602
B	1210	GLY	-	expression tag	UNP O88602
B	1211	LEU	-	expression tag	UNP O88602
B	1212	VAL	-	expression tag	UNP O88602
B	1213	PRO	-	expression tag	UNP O88602
B	1214	ARG	-	expression tag	UNP O88602
B	1215	GLY	-	expression tag	UNP O88602
C	241	GLU	ASN	engineered mutation	UNP P19491
C	382	LEU	VAL	engineered mutation	UNP P19491
C	?	-	LEU	deletion	UNP P19491
C	?	-	THR	deletion	UNP P19491
C	?	-	GLU	deletion	UNP P19491
C	?	-	LEU	deletion	UNP P19491
C	?	-	PRO	deletion	UNP P19491
C	?	-	SER	deletion	UNP P19491
C	384	GLU	GLY	engineered mutation	UNP P19491
C	385	ASP	ASN	engineered mutation	UNP P19491
C	392	GLN	ASN	conflict	UNP P19491
C	758	LEU	VAL	engineered mutation	UNP P19491
C	827	GLY	-	linker	UNP P19491
C	828	THR	-	linker	UNP P19491
C	1047	ASP	ASN	conflict	UNP O88602
C	1208	THR	-	expression tag	UNP O88602
C	1209	GLY	-	expression tag	UNP O88602

Continued on next page...

Continued from previous page...

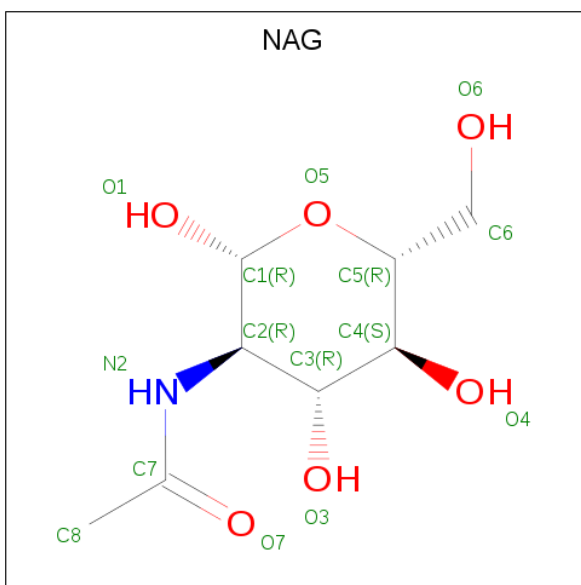
Chain	Residue	Modelled	Actual	Comment	Reference
C	1210	GLY	-	expression tag	UNP O88602
C	1211	LEU	-	expression tag	UNP O88602
C	1212	VAL	-	expression tag	UNP O88602
C	1213	PRO	-	expression tag	UNP O88602
C	1214	ARG	-	expression tag	UNP O88602
C	1215	GLY	-	expression tag	UNP O88602
D	241	GLU	ASN	engineered mutation	UNP P19491
D	382	LEU	VAL	engineered mutation	UNP P19491
D	?	-	LEU	deletion	UNP P19491
D	?	-	THR	deletion	UNP P19491
D	?	-	GLU	deletion	UNP P19491
D	?	-	LEU	deletion	UNP P19491
D	?	-	PRO	deletion	UNP P19491
D	?	-	SER	deletion	UNP P19491
D	384	GLU	GLY	engineered mutation	UNP P19491
D	385	ASP	ASN	engineered mutation	UNP P19491
D	392	GLN	ASN	conflict	UNP P19491
D	758	LEU	VAL	engineered mutation	UNP P19491
D	827	GLY	-	linker	UNP P19491
D	828	THR	-	linker	UNP P19491
D	1047	ASP	ASN	conflict	UNP O88602
D	1208	THR	-	expression tag	UNP O88602
D	1209	GLY	-	expression tag	UNP O88602
D	1210	GLY	-	expression tag	UNP O88602
D	1211	LEU	-	expression tag	UNP O88602
D	1212	VAL	-	expression tag	UNP O88602
D	1213	PRO	-	expression tag	UNP O88602
D	1214	ARG	-	expression tag	UNP O88602
D	1215	GLY	-	expression tag	UNP O88602

- Molecule 2 is {[7-morpholin-4-yl-2,3-dioxo-6-(trifluoromethyl)-3,4-dihydroquinoxalin-1(2H)-yl]methyl}phosphonic acid (three-letter code: ZK1) (formula: C₁₄H₁₅F₃N₃O₆P).



Mol	Chain	Residues	Atoms						AltConf
2	A	1	Total	C	F	N	O	P	0
			27	14	3	3	6	1	
2	B	1	Total	C	F	N	O	P	0
			27	14	3	3	6	1	
2	C	1	Total	C	F	N	O	P	0
			27	14	3	3	6	1	
2	D	1	Total	C	F	N	O	P	0
			27	14	3	3	6	1	

- Molecule 3 is N-ACETYL-D-GLUCOSAMINE (three-letter code: NAG) (formula: $C_8H_{15}NO_6$).

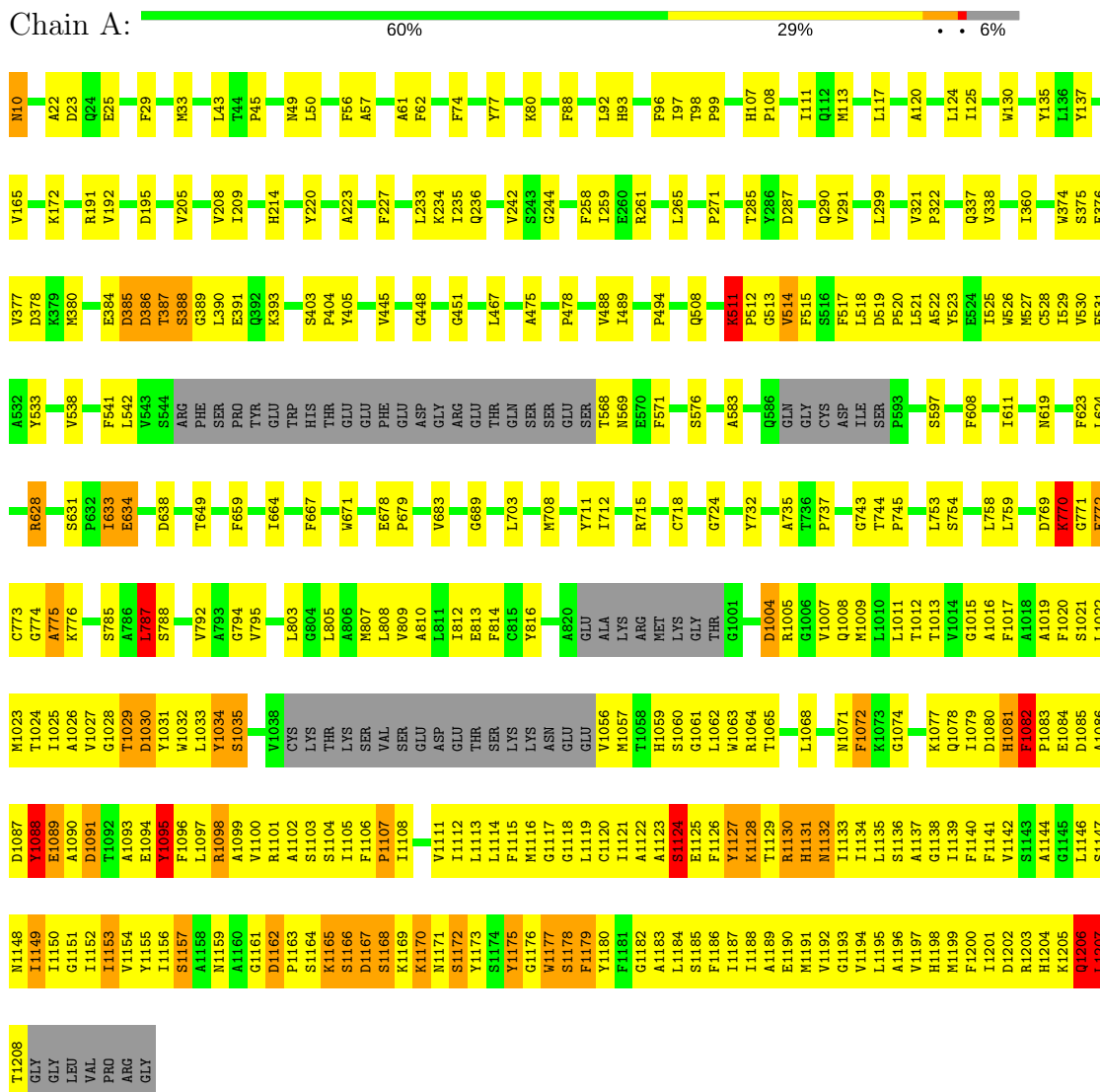


Mol	Chain	Residues	Atoms				AltConf
3	A	1	Total	C	N	O	0
			14	8	1	5	
3	B	1	Total	C	N	O	0
			14	8	1	5	
3	C	1	Total	C	N	O	0
			14	8	1	5	
3	D	1	Total	C	N	O	0
			14	8	1	5	

3 Residue-property plots

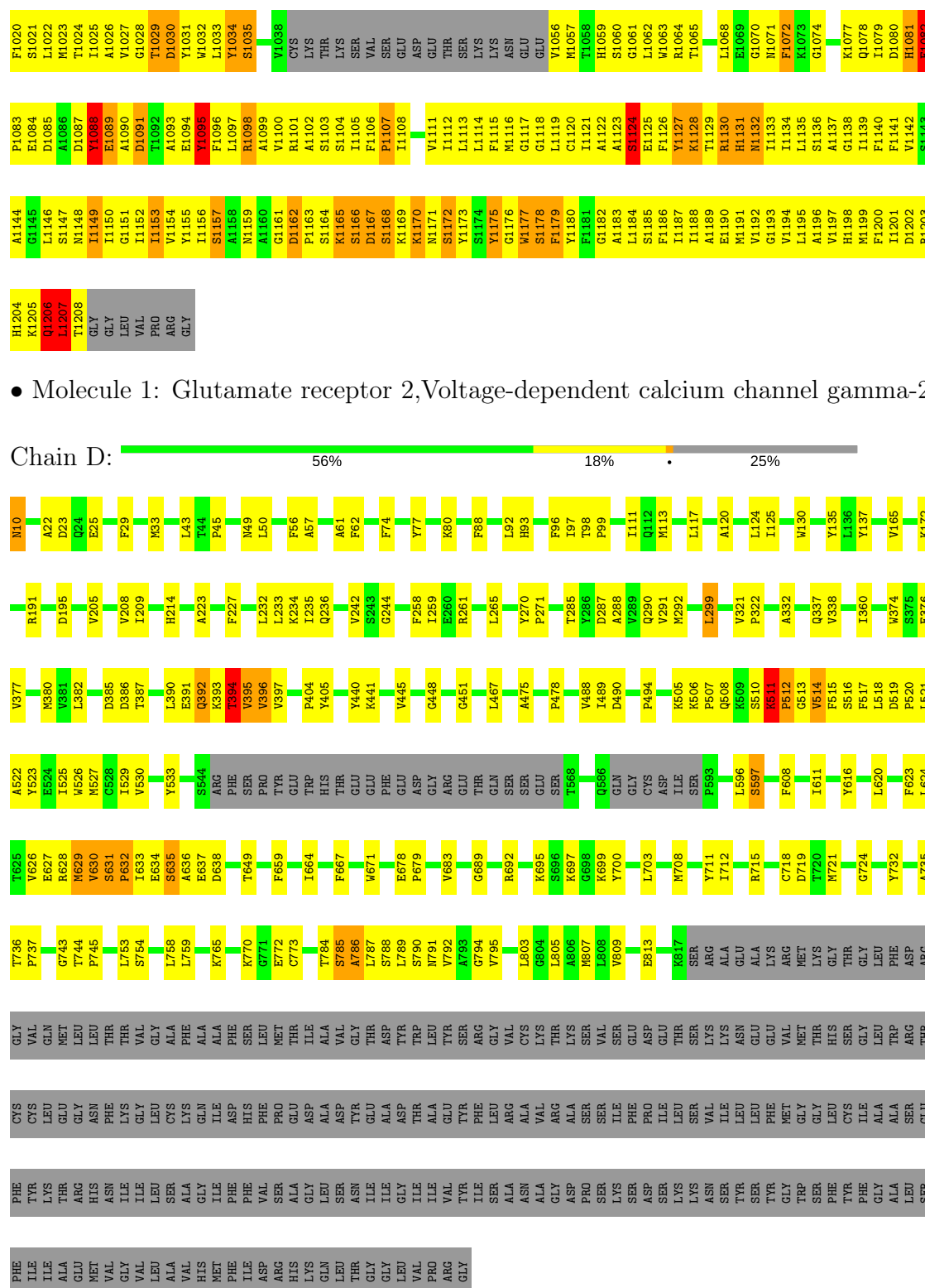
These plots are drawn for all protein, RNA and DNA chains in the entry. The first graphic for a chain summarises the proportions of the various outlier classes displayed in the second graphic. The second graphic shows the sequence view annotated by issues in geometry. Residues are color-coded according to the number of geometric quality criteria for which they contain at least one outlier: green = 0, yellow = 1, orange = 2 and red = 3 or more. Stretches of 2 or more consecutive residues without any outlier are shown as a green connector. Residues present in the sample, but not in the model, are shown in grey.

- Molecule 1: Glutamate receptor 2, Voltage-dependent calcium channel gamma-2 subunit



- Molecule 1: Glutamate receptor 2, Voltage-dependent calcium channel gamma-2 subunit





4 Experimental information

Property	Value	Source
Reconstruction method	SINGLE PARTICLE	Depositor
Imposed symmetry	POINT, C2	Depositor
Number of particles used	10293	Depositor
Resolution determination method	FSC 0.143 CUT-OFF	Depositor
CTF correction method	PHASE FLIPPING AND AMPLITUDE CORRECTION	Depositor
Microscope	FEI TITAN KRIOS	Depositor
Voltage (kV)	300	Depositor
Electron dose ($e^-/\text{\AA}^2$)	80	Depositor
Minimum defocus (nm)	Not provided	Depositor
Maximum defocus (nm)	Not provided	Depositor
Magnification	Not provided	Depositor
Image detector	GATAN K2 SUMMIT (4k x 4k)	Depositor

5 Model quality

5.1 Standard geometry

Bond lengths and bond angles in the following residue types are not validated in this section: NAG, ZK1

The Z score for a bond length (or angle) is the number of standard deviations the observed value is removed from the expected value. A bond length (or angle) with $|Z| > 5$ is considered an outlier worth inspection. RMSZ is the root-mean-square of all Z scores of the bond lengths (or angles).

Mol	Chain	Bond lengths		Bond angles	
		RMSZ	# $ Z > 2$	RMSZ	# $ Z > 2$
1	A	0.33	2/7267 (0.0%)	0.60	15/9925 (0.2%)
1	B	0.24	0/5768	0.37	2/7888 (0.0%)
1	C	0.34	2/7267 (0.0%)	0.54	16/9925 (0.2%)
1	D	0.23	0/5768	0.36	1/7888 (0.0%)
All	All	0.30	4/26070 (0.0%)	0.49	34/35626 (0.1%)

Chiral center outliers are detected by calculating the chiral volume of a chiral center and verifying if the center is modelled as a planar moiety or with the opposite hand. A planarity outlier is detected by checking planarity of atoms in a peptide group, atoms in a mainchain group or atoms of a sidechain that are expected to be planar.

Mol	Chain	#Chirality outliers	#Planarity outliers
1	A	0	3
1	C	0	2
All	All	0	5

All (4) bond length outliers are listed below:

Mol	Chain	Res	Type	Atoms	Z	Observed(Å)	Ideal(Å)
1	C	1157	SER	C-N	-10.31	1.10	1.34
1	A	1157	SER	C-N	-10.30	1.10	1.34
1	C	808	LEU	C-N	8.81	1.54	1.34
1	A	787	LEU	C-N	-5.18	1.22	1.34

The worst 5 of 34 bond angle outliers are listed below:

Mol	Chain	Res	Type	Atoms	Z	Observed(°)	Ideal(°)
1	A	787	LEU	O-C-N	-28.18	77.62	122.70
1	C	628	ARG	NE-CZ-NH1	-13.77	113.42	120.30
1	A	628	ARG	NE-CZ-NH2	-12.47	114.06	120.30

Continued on next page...

Continued from previous page...

Mol	Chain	Res	Type	Atoms	Z	Observed(°)	Ideal(°)
1	C	628	ARG	NE-CZ-NH2	11.86	126.23	120.30
1	A	628	ARG	NE-CZ-NH1	11.01	125.80	120.30

There are no chirality outliers.

All (5) planarity outliers are listed below:

Mol	Chain	Res	Type	Group
1	A	1206	GLN	Mainchain
1	A	1207	LEU	Mainchain
1	A	787	LEU	Mainchain
1	C	1206	GLN	Mainchain
1	C	1207	LEU	Mainchain

5.2 Too-close contacts ⓘ

In the following table, the Non-H and H(model) columns list the number of non-hydrogen atoms and hydrogen atoms in the chain respectively. The H(added) column lists the number of hydrogen atoms added and optimized by MolProbity. The Clashes column lists the number of clashes within the asymmetric unit, whereas Symm-Clashes lists symmetry related clashes.

Mol	Chain	Non-H	H(model)	H(added)	Clashes	Symm-Clashes
1	A	7110	0	6571	1036	0
1	B	5647	0	5177	227	0
1	C	7110	0	6573	1039	0
1	D	5647	0	5177	238	0
2	A	27	0	13	0	0
2	B	27	0	13	1	0
2	C	27	0	13	0	0
2	D	27	0	13	0	0
3	A	14	0	13	2	0
3	B	14	0	13	0	0
3	C	14	0	13	0	0
3	D	14	0	13	2	0
All	All	25678	0	23602	2456	0

The all-atom clashscore is defined as the number of clashes found per 1000 atoms (including hydrogen atoms). The all-atom clashscore for this structure is 50.

The worst 5 of 2456 close contacts within the same asymmetric unit are listed below, sorted by their clash magnitude.

Atom-1	Atom-2	Interatomic distance (Å)	Clash overlap (Å)
1:C:1114:LEU:CD1	1:C:1141:PHE:CZ	1.75	1.69
1:A:1114:LEU:CD1	1:A:1141:PHE:CZ	1.75	1.68
1:C:1134:ILE:CG2	1:C:1200:PHE:HB3	1.21	1.66
1:A:1083:PRO:HG2	1:A:1098:ARG:CG	1.16	1.62
1:C:1164:SER:HA	1:C:1165:LYS:CG	1.27	1.60

There are no symmetry-related clashes.

5.3 Torsion angles [i](#)

5.3.1 Protein backbone [i](#)

In the following table, the Percentiles column shows the percent Ramachandran outliers of the chain as a percentile score with respect to all PDB entries followed by that with respect to all EM entries.

The Analysed column shows the number of residues for which the backbone conformation was analysed, and the total number of residues.

Mol	Chain	Analysed	Favoured	Allowed	Outliers	Percentiles	
1	A	963/1034 (93%)	844 (88%)	78 (8%)	41 (4%)	3	28
1	B	773/1034 (75%)	699 (90%)	56 (7%)	18 (2%)	7	41
1	C	963/1034 (93%)	845 (88%)	82 (8%)	36 (4%)	4	31
1	D	773/1034 (75%)	693 (90%)	57 (7%)	23 (3%)	5	35
All	All	3472/4136 (84%)	3081 (89%)	273 (8%)	118 (3%)	7	33

5 of 118 Ramachandran outliers are listed below:

Mol	Chain	Res	Type
1	A	172	LYS
1	A	385	ASP
1	A	387	THR
1	A	389	GLY
1	A	511	LYS

5.3.2 Protein sidechains [i](#)

In the following table, the Percentiles column shows the percent sidechain outliers of the chain as a percentile score with respect to all PDB entries followed by that with respect to all EM entries.

The Analysed column shows the number of residues for which the sidechain conformation was analysed, and the total number of residues.

Mol	Chain	Analysed	Rotameric	Outliers	Percentiles	
1	A	693/876 (79%)	676 (98%)	17 (2%)	50	74
1	B	546/876 (62%)	540 (99%)	6 (1%)	76	88
1	C	693/876 (79%)	676 (98%)	17 (2%)	50	74
1	D	546/876 (62%)	541 (99%)	5 (1%)	81	90
All	All	2478/3504 (71%)	2433 (98%)	45 (2%)	64	82

5 of 45 residues with a non-rotameric sidechain are listed below:

Mol	Chain	Res	Type
1	B	631	SER
1	C	628	ARG
1	D	299	LEU
1	B	787	LEU
1	C	772	GLU

Some sidechains can be flipped to improve hydrogen bonding and reduce clashes. 5 of 14 such sidechains are listed below:

Mol	Chain	Res	Type
1	B	619	ASN
1	C	83	ASN
1	C	1198	HIS
1	B	83	ASN
1	C	1148	ASN

5.3.3 RNA ⓘ

There are no RNA molecules in this entry.

5.4 Non-standard residues in protein, DNA, RNA chains ⓘ

There are no non-standard protein/DNA/RNA residues in this entry.

5.5 Carbohydrates ⓘ

There are no carbohydrates in this entry.

5.6 Ligand geometry ⓘ

8 ligands are modelled in this entry.

In the following table, the Counts columns list the number of bonds (or angles) for which Mogul statistics could be retrieved, the number of bonds (or angles) that are observed in the model and the number of bonds (or angles) that are defined in the Chemical Component Dictionary. The Link column lists molecule types, if any, to which the group is linked. The Z score for a bond length (or angle) is the number of standard deviations the observed value is removed from the expected value. A bond length (or angle) with $|Z| > 2$ is considered an outlier worth inspection. RMSZ is the root-mean-square of all Z scores of the bond lengths (or angles).

Mol	Type	Chain	Res	Link	Bond lengths			Bond angles		
					Counts	RMSZ	# Z > 2	Counts	RMSZ	# Z > 2
2	ZK1	A	1301	-	28,29,29	3.27	14 (50%)	36,45,45	1.73	5 (13%)
3	NAG	A	1302	1	14,14,15	0.47	0	17,19,21	0.74	0
2	ZK1	B	1301	-	28,29,29	3.26	14 (50%)	36,45,45	1.74	5 (13%)
3	NAG	B	1302	1	14,14,15	0.48	0	17,19,21	0.74	0
2	ZK1	C	1301	-	28,29,29	3.25	14 (50%)	36,45,45	1.74	5 (13%)
3	NAG	C	1302	1	14,14,15	0.47	0	17,19,21	0.96	1 (5%)
2	ZK1	D	1301	-	28,29,29	3.26	14 (50%)	36,45,45	1.74	5 (13%)
3	NAG	D	1302	1	14,14,15	0.50	0	17,19,21	0.72	0

In the following table, the Chirals column lists the number of chiral outliers, the number of chiral centers analysed, the number of these observed in the model and the number defined in the Chemical Component Dictionary. Similar counts are reported in the Torsion and Rings columns. '-' means no outliers of that kind were identified.

Mol	Type	Chain	Res	Link	Chirals	Torsions	Rings
2	ZK1	A	1301	-	-	0/13/23/23	0/3/3/3
3	NAG	A	1302	1	-	0/6/23/26	0/1/1/1
2	ZK1	B	1301	-	-	0/13/23/23	0/3/3/3
3	NAG	B	1302	1	-	0/6/23/26	0/1/1/1
2	ZK1	C	1301	-	-	0/13/23/23	0/3/3/3
3	NAG	C	1302	1	-	0/6/23/26	0/1/1/1
2	ZK1	D	1301	-	-	0/13/23/23	0/3/3/3
3	NAG	D	1302	1	-	0/6/23/26	0/1/1/1

The worst 5 of 56 bond length outliers are listed below:

Mol	Chain	Res	Type	Atoms	Z	Observed(Å)	Ideal(Å)
2	C	1301	ZK1	PBA-OAD	-3.55	1.46	1.54
2	D	1301	ZK1	PBA-OAD	-3.50	1.46	1.54
2	A	1301	ZK1	PBA-OAD	-3.49	1.46	1.54

Continued on next page...

Continued from previous page...

Mol	Chain	Res	Type	Atoms	Z	Observed(Å)	Ideal(Å)
2	B	1301	ZK1	PBA-OAD	-3.47	1.46	1.54
2	B	1301	ZK1	CAN-NAX	2.02	1.49	1.46

The worst 5 of 21 bond angle outliers are listed below:

Mol	Chain	Res	Type	Atoms	Z	Observed(°)	Ideal(°)
2	A	1301	ZK1	CAI-CAR-NAX	-2.65	118.99	122.65
2	B	1301	ZK1	CAI-CAR-NAX	-2.64	119.01	122.65
2	C	1301	ZK1	CAI-CAR-NAX	-2.62	119.04	122.65
2	D	1301	ZK1	CAI-CAR-NAX	-2.59	119.08	122.65
2	D	1301	ZK1	CAO-NAY-CAU	2.10	120.33	117.79

There are no chirality outliers.

There are no torsion outliers.

There are no ring outliers.

3 monomers are involved in 5 short contacts:

Mol	Chain	Res	Type	Clashes	Symm-Clashes
3	A	1302	NAG	2	0
2	B	1301	ZK1	1	0
3	D	1302	NAG	2	0

5.7 Other polymers [i](#)

There are no such residues in this entry.

5.8 Polymer linkage issues [i](#)

The following chains have linkage breaks:

Mol	Chain	Number of breaks
1	A	1
1	C	1

All chain breaks are listed below:

Model	Chain	Residue-1	Atom-1	Residue-2	Atom-2	Distance (Å)
1	A	1157:SER	C	1158:ALA	N	1.10
1	C	1157:SER	C	1158:ALA	N	1.10