



Full wwPDB X-ray Structure Validation Report ⓘ

Sep 27, 2018 – 04:49 PM EDT

PDB ID : 4KPF
Title : Novel fluoroquinolones in complex with topoisomerase IV from *S. pneumoniae* and E-site G-gate
Authors : Laponogov, I.; Pan, X.-S.; Vesekov, D.A.; Cirz, R.T.; Wagman, A.S.; Moser, H.E.; Fisher, L.M.; Sanderson, M.R.
Deposited on : 2013-05-13
Resolution : 3.24 Å(reported)

This is a Full wwPDB X-ray Structure Validation Report for a publicly released PDB entry.

We welcome your comments at validation@mail.wwpdb.org

A user guide is available at

<https://www.wwpdb.org/validation/2017/XrayValidationReportHelp>

with specific help available everywhere you see the ⓘ symbol.

The following versions of software and data (see [references ⓘ](#)) were used in the production of this report:

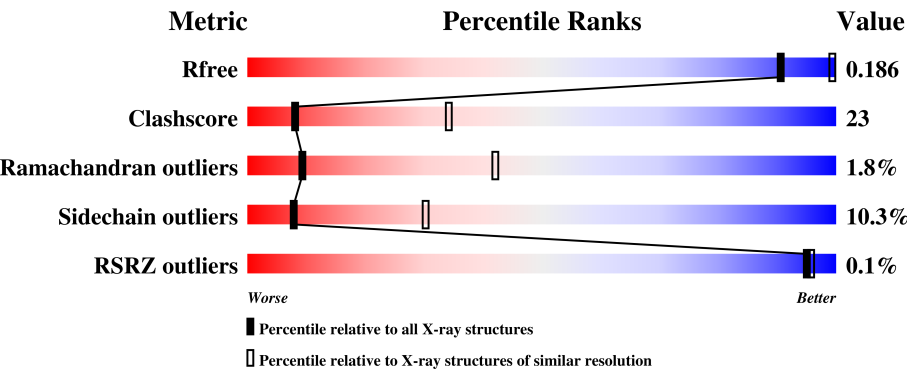
MolProbity : 4.02b-467
Mogul : 1.7.3 (157068), CSD as539be (2018)
Xtriage (Phenix) : 1.13
EDS : rb-20031172
Percentile statistics : 20171227.v01 (using entries in the PDB archive December 27th 2017)
Refmac : 5.8.0158
CCP4 : 7.0 (Gargrove)
Ideal geometry (proteins) : Engh & Huber (2001)
Ideal geometry (DNA, RNA) : Parkinson et al. (1996)
Validation Pipeline (wwPDB-VP) : rb-20031172

1 Overall quality at a glance i

The following experimental techniques were used to determine the structure:
X-RAY DIFFRACTION

The reported resolution of this entry is 3.24 Å.

Percentile scores (ranging between 0-100) for global validation metrics of the entry are shown in the following graphic. The table shows the number of entries on which the scores are based.



Metric	Whole archive (#Entries)	Similar resolution (#Entries, resolution range(Å))
R _{free}	111664	1379 (3.28-3.20)
Clashscore	122126	1510 (3.28-3.20)
Ramachandran outliers	120053	1485 (3.28-3.20)
Sidechain outliers	120020	1484 (3.28-3.20)
RSRZ outliers	108989	1331 (3.28-3.20)

The table below summarises the geometric issues observed across the polymeric chains and their fit to the electron density. The red, orange, yellow and green segments on the lower bar indicate the fraction of residues that contain outliers for ≥ 3 , 2, 1 and 0 types of geometric quality criteria. A grey segment represents the fraction of residues that are not modelled. The numeric value for each fraction is indicated below the corresponding segment, with a dot representing fractions $\leq 5\%$. The upper red bar (where present) indicates the fraction of residues that have poor fit to the electron density. The numeric value is given above the bar.

Mol	Chain	Length	Quality of chain
1	A	496	<div><div></div><div><div></div><div>60%</div><div></div><div>32%</div><div></div><div>5%</div><div></div></div></div>
1	B	496	<div><div></div><div><div></div><div>60%</div><div></div><div>31%</div><div></div><div>6%</div><div></div></div></div>
2	C	268	<div><div></div><div><div></div><div>48%</div><div></div><div>25%</div><div></div><div>•</div><div>22%</div><div></div></div></div>
2	D	268	<div><div></div><div><div></div><div>%</div><div></div><div>56%</div><div></div><div>21%</div><div></div><div>•</div><div>22%</div><div></div></div></div>
3	E	7	<div><div></div><div><div></div><div>43%</div><div></div><div>57%</div><div></div></div></div>

Continued on next page...

Continued from previous page...

Mol	Chain	Length	Quality of chain
4	F	11	<div><div></div><div></div><div></div><div>36%</div><div>36%</div><div>27%</div></div>
5	G	7	<div><div></div><div></div><div></div><div>57%</div><div>29%</div><div>14%</div></div>
6	H	11	<div><div></div><div></div><div></div><div>36%</div><div>45%</div><div>18%</div></div>

2 Entry composition

There are 9 unique types of molecules in this entry. The entry contains 11197 atoms, of which 38 are hydrogens and 0 are deuteriums.

In the tables below, the ZeroOcc column contains the number of atoms modelled with zero occupancy, the AltConf column contains the number of residues with at least one atom in alternate conformation and the Trace column contains the number of residues modelled with at most 2 atoms.

- Molecule 1 is a protein called ParC55.

Mol	Chain	Residues	Atoms					ZeroOcc	AltConf	Trace
1	A	482	Total	C	N	O	S	0	1	0
			3730	2365	643	709	13			
1	B	482	Total	C	N	O	S	0	1	0
			3713	2357	637	706	13			

There are 18 discrepancies between the modelled and reference sequences:

Chain	Residue	Modelled	Actual	Comment	Reference
A	257	THR	ILE	CONFLICT	UNP P72525
A	489	LEU	-	EXPRESSION TAG	UNP P72525
A	490	GLU	-	EXPRESSION TAG	UNP P72525
A	491	HIS	-	EXPRESSION TAG	UNP P72525
A	492	HIS	-	EXPRESSION TAG	UNP P72525
A	493	HIS	-	EXPRESSION TAG	UNP P72525
A	494	HIS	-	EXPRESSION TAG	UNP P72525
A	495	HIS	-	EXPRESSION TAG	UNP P72525
A	496	HIS	-	EXPRESSION TAG	UNP P72525
B	257	THR	ILE	CONFLICT	UNP P72525
B	489	LEU	-	EXPRESSION TAG	UNP P72525
B	490	GLU	-	EXPRESSION TAG	UNP P72525
B	491	HIS	-	EXPRESSION TAG	UNP P72525
B	492	HIS	-	EXPRESSION TAG	UNP P72525
B	493	HIS	-	EXPRESSION TAG	UNP P72525
B	494	HIS	-	EXPRESSION TAG	UNP P72525
B	495	HIS	-	EXPRESSION TAG	UNP P72525
B	496	HIS	-	EXPRESSION TAG	UNP P72525

- Molecule 2 is a protein called ParE30.

Mol	Chain	Residues	Atoms					ZeroOcc	AltConf	Trace
2	C	208	Total	C	N	O	S	0	0	0
			1466	932	256	272	6			

Continued on next page...

Continued from previous page...

Mol	Chain	Residues	Atoms					ZeroOcc	AltConf	Trace
2	D	210	Total	C	N	O	S	0	0	0
			1446	920	251	269	6			

There are 52 discrepancies between the modelled and reference sequences:

Chain	Residue	Modelled	Actual	Comment	Reference
C	380	MET	-	EXPRESSION TAG	UNP Q59961
C	381	GLY	-	EXPRESSION TAG	UNP Q59961
C	382	HIS	-	EXPRESSION TAG	UNP Q59961
C	383	HIS	-	EXPRESSION TAG	UNP Q59961
C	384	HIS	-	EXPRESSION TAG	UNP Q59961
C	385	HIS	-	EXPRESSION TAG	UNP Q59961
C	386	HIS	-	EXPRESSION TAG	UNP Q59961
C	387	HIS	-	EXPRESSION TAG	UNP Q59961
C	388	HIS	-	EXPRESSION TAG	UNP Q59961
C	389	HIS	-	EXPRESSION TAG	UNP Q59961
C	390	HIS	-	EXPRESSION TAG	UNP Q59961
C	391	HIS	-	EXPRESSION TAG	UNP Q59961
C	392	SER	-	EXPRESSION TAG	UNP Q59961
C	393	SER	-	EXPRESSION TAG	UNP Q59961
C	394	GLY	-	EXPRESSION TAG	UNP Q59961
C	395	HIS	-	EXPRESSION TAG	UNP Q59961
C	396	ILE	-	EXPRESSION TAG	UNP Q59961
C	397	ASP	-	EXPRESSION TAG	UNP Q59961
C	398	ASP	-	EXPRESSION TAG	UNP Q59961
C	399	ASP	-	EXPRESSION TAG	UNP Q59961
C	400	ASP	-	EXPRESSION TAG	UNP Q59961
C	401	LYS	-	EXPRESSION TAG	UNP Q59961
C	402	HIS	-	EXPRESSION TAG	UNP Q59961
C	403	MET	-	EXPRESSION TAG	UNP Q59961
C	460	ILE	VAL	CONFLICT	UNP Q59961
C	644	ALA	THR	CONFLICT	UNP Q59961
D	380	MET	-	EXPRESSION TAG	UNP Q59961
D	381	GLY	-	EXPRESSION TAG	UNP Q59961
D	382	HIS	-	EXPRESSION TAG	UNP Q59961
D	383	HIS	-	EXPRESSION TAG	UNP Q59961
D	384	HIS	-	EXPRESSION TAG	UNP Q59961
D	385	HIS	-	EXPRESSION TAG	UNP Q59961
D	386	HIS	-	EXPRESSION TAG	UNP Q59961
D	387	HIS	-	EXPRESSION TAG	UNP Q59961
D	388	HIS	-	EXPRESSION TAG	UNP Q59961
D	389	HIS	-	EXPRESSION TAG	UNP Q59961

Continued on next page...

Continued from previous page...

Chain	Residue	Modelled	Actual	Comment	Reference
D	390	HIS	-	EXPRESSION TAG	UNP Q59961
D	391	HIS	-	EXPRESSION TAG	UNP Q59961
D	392	SER	-	EXPRESSION TAG	UNP Q59961
D	393	SER	-	EXPRESSION TAG	UNP Q59961
D	394	GLY	-	EXPRESSION TAG	UNP Q59961
D	395	HIS	-	EXPRESSION TAG	UNP Q59961
D	396	ILE	-	EXPRESSION TAG	UNP Q59961
D	397	ASP	-	EXPRESSION TAG	UNP Q59961
D	398	ASP	-	EXPRESSION TAG	UNP Q59961
D	399	ASP	-	EXPRESSION TAG	UNP Q59961
D	400	ASP	-	EXPRESSION TAG	UNP Q59961
D	401	LYS	-	EXPRESSION TAG	UNP Q59961
D	402	HIS	-	EXPRESSION TAG	UNP Q59961
D	403	MET	-	EXPRESSION TAG	UNP Q59961
D	460	ILE	VAL	CONFLICT	UNP Q59961
D	644	ALA	THR	CONFLICT	UNP Q59961

- Molecule 3 is a DNA chain called E-site1.

Mol	Chain	Residues	Atoms					ZeroOcc	AltConf	Trace
3	E	7	Total	C	N	O	P	0	0	0
			140	69	27	38	6			

- Molecule 4 is a DNA chain called E-site2.

Mol	Chain	Residues	Atoms					ZeroOcc	AltConf	Trace
4	F	11	Total	C	N	O	P	0	0	0
			225	108	39	67	11			

- Molecule 5 is a DNA chain called E-site3.

Mol	Chain	Residues	Atoms					ZeroOcc	AltConf	Trace
5	G	7	Total	C	N	O	P	0	0	0
			139	68	25	40	6			

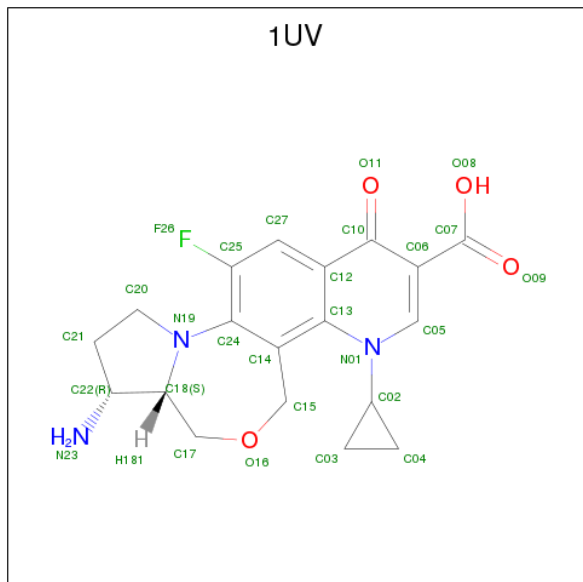
- Molecule 6 is a DNA chain called E-site4.

Mol	Chain	Residues	Atoms					ZeroOcc	AltConf	Trace
6	H	11	Total	C	N	O	P	0	0	0
			226	107	43	65	11			

- Molecule 7 is MAGNESIUM ION (three-letter code: MG) (formula: Mg).

Mol	Chain	Residues	Atoms	ZeroOcc	AltConf
7	G	1	Total Mg 1 1	0	0
7	B	1	Total Mg 1 1	0	0
7	A	2	Total Mg 2 2	0	0
7	D	1	Total Mg 1 1	0	0
7	C	1	Total Mg 1 1	0	0

- Molecule 8 is (3aS,4R)-4-amino-13-cyclopropyl-8-fluoro-10-oxo-3a,4,5,6,10,13-hexahydro-1H,3H-pyrrolo[2',1':3,4][1,4]oxazepino[5,6-h]quinoline-11-carboxylic acid (three-letter code: 1UV) (formula: C₁₉H₂₀FN₃O₄).



Mol	Chain	Residues	Atoms						ZeroOcc	AltConf
8	H	1	Total	C	F	H	N	O	0	0
			46	19	1	19	3	4		
8	H	1	Total	C	F	H	N	O	0	0
			46	19	1	19	3	4		

- Molecule 9 is water.

Mol	Chain	Residues	Atoms	ZeroOcc	AltConf
9	A	8	Total O 8 8	0	0
9	B	3	Total O 3 3	0	0

Continued on next page...

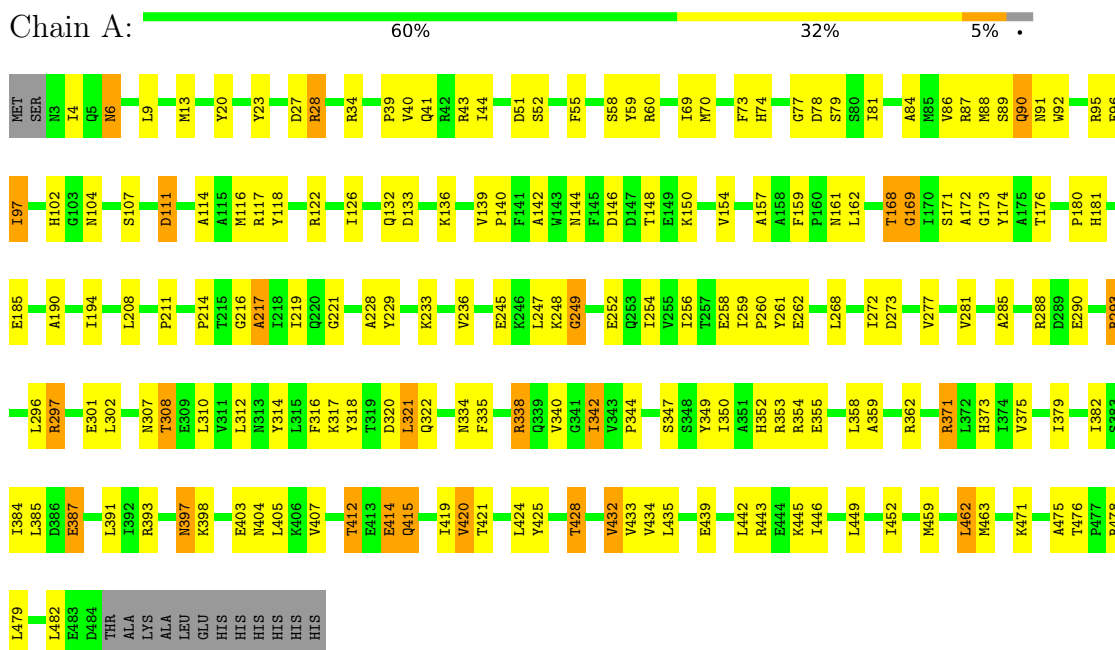
Continued from previous page...

Mol	Chain	Residues	Atoms		ZeroOcc	AltConf
9	C	2	Total	O	0	0
			2	2		
9	D	1	Total	O	0	0
			1	1		

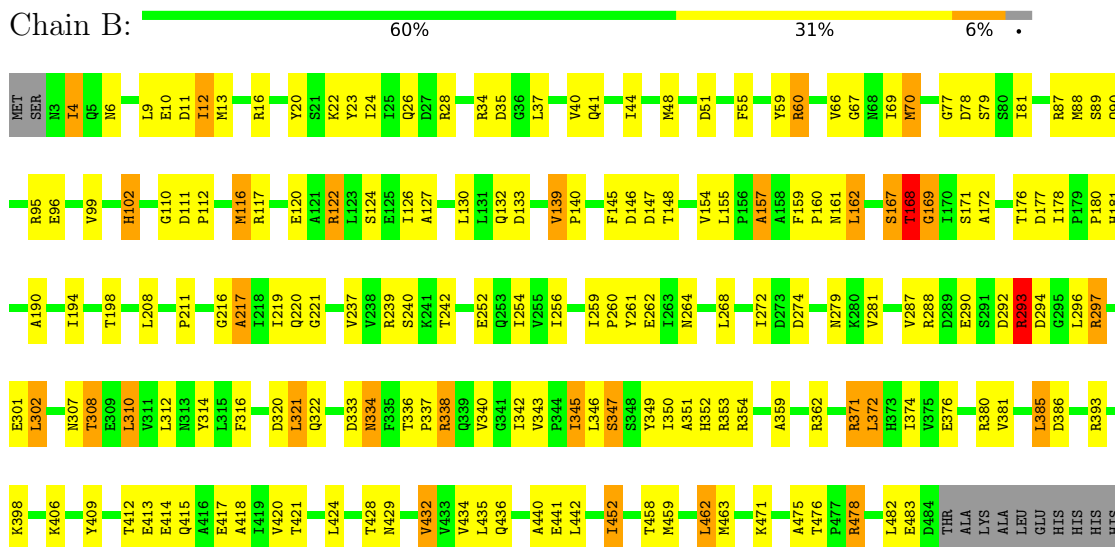
3 Residue-property plots

These plots are drawn for all protein, RNA and DNA chains in the entry. The first graphic for a chain summarises the proportions of the various outlier classes displayed in the second graphic. The second graphic shows the sequence view annotated by issues in geometry and electron density. Residues are color-coded according to the number of geometric quality criteria for which they contain at least one outlier: green = 0, yellow = 1, orange = 2 and red = 3 or more. A red dot above a residue indicates a poor fit to the electron density ($RSRZ > 2$). Stretches of 2 or more consecutive residues without any outlier are shown as a green connector. Residues present in the sample, but not in the model, are shown in grey.

• Molecule 1: ParC55



• Molecule 1: ParC55



- Molecule 6: E-site4

Chain H:  36% 45% 18%



4 Data and refinement statistics

Property	Value	Source
Space group	P 31 2 1	Depositor
Cell constants a, b, c, α , β , γ	157.86Å 157.86Å 210.78Å 90.00° 90.00° 120.00°	Depositor
Resolution (Å)	41.83 – 3.24 41.83 – 3.24	Depositor EDS
% Data completeness (in resolution range)	99.9 (41.83-3.24) 99.9 (41.83-3.24)	Depositor EDS
R_{merge}	0.81	Depositor
R_{sym}	(Not available)	Depositor
$\langle I/\sigma(I) \rangle$ ¹	5.79 (at 3.25Å)	Xtriage
Refinement program	PHENIX (phenix.refine: 1.8_1069)	Depositor
R, R_{free}	0.162 , 0.184 0.163 , 0.186	Depositor DCC
R_{free} test set	2446 reflections (5.02%)	wwPDB-VP
Wilson B-factor (Å ²)	71.3	Xtriage
Anisotropy	0.589	Xtriage
Bulk solvent k_{sol} (e/Å ³), B_{sol} (Å ²)	0.27 , 49.2	EDS
L-test for twinning ²	$\langle L \rangle = 0.48$, $\langle L^2 \rangle = 0.31$	Xtriage
Estimated twinning fraction	0.028 for -h,-k,l	Xtriage
F_o, F_c correlation	0.94	EDS
Total number of atoms	11197	wwPDB-VP
Average B, all atoms (Å ²)	89.0	wwPDB-VP

Xtriage's analysis on translational NCS is as follows: *The largest off-origin peak in the Patterson function is 2.20% of the height of the origin peak. No significant pseudotranslation is detected.*

¹Intensities estimated from amplitudes.

²Theoretical values of $\langle |L| \rangle$, $\langle L^2 \rangle$ for acentric reflections are 0.5, 0.333 respectively for untwinned datasets, and 0.375, 0.2 for perfectly twinned datasets.

5 Model quality

5.1 Standard geometry

Bond lengths and bond angles in the following residue types are not validated in this section: MG, 1UV

The Z score for a bond length (or angle) is the number of standard deviations the observed value is removed from the expected value. A bond length (or angle) with $|Z| > 5$ is considered an outlier worth inspection. RMSZ is the root-mean-square of all Z scores of the bond lengths (or angles).

Mol	Chain	Bond lengths		Bond angles	
		RMSZ	$\# Z > 5$	RMSZ	$\# Z > 5$
1	A	0.44	0/3794	0.64	0/5142
1	B	0.45	0/3777	0.64	0/5123
2	C	0.34	0/1492	0.53	0/2037
2	D	0.33	0/1472	0.51	0/2014
3	E	0.82	0/157	1.50	4/241 (1.7%)
4	F	0.84	0/251	1.78	6/385 (1.6%)
5	G	0.76	0/155	1.54	3/238 (1.3%)
6	H	0.83	0/253	1.60	5/388 (1.3%)
All	All	0.46	0/11351	0.75	18/15568 (0.1%)

There are no bond length outliers.

All (18) bond angle outliers are listed below:

Mol	Chain	Res	Type	Atoms	Z	Observed(°)	Ideal(°)
4	F	3	DT	O4'-C4'-C3'	-11.44	99.14	106.00
4	F	10	DT	O4'-C4'-C3'	-10.03	99.98	106.00
6	H	10	DC	O4'-C4'-C3'	-9.13	100.52	106.00
5	G	14	DA	O4'-C4'-C3'	-7.20	101.62	104.50
5	G	11	DT	N3-C4-O4	6.78	123.97	119.90
4	F	6	DT	O4'-C1'-N1	6.70	112.69	108.00
4	F	8	DC	O4'-C1'-N1	6.35	112.44	108.00
3	E	11	DT	N3-C4-O4	6.33	123.70	119.90
4	F	6	DT	C1'-O4'-C4'	-6.26	103.84	110.10
6	H	5	DA	O4'-C1'-N9	-6.24	103.63	108.00
6	H	3	DC	O4'-C4'-C3'	-6.22	102.01	104.50
3	E	12	DG	C4'-C3'-C2'	-6.11	97.60	103.10
4	F	10	DT	C1'-O4'-C4'	-6.11	103.99	110.10
3	E	12	DG	O4'-C4'-C3'	-5.81	102.18	104.50
6	H	10	DC	C1'-O4'-C4'	-5.44	104.66	110.10
5	G	11	DT	C5-C4-O4	-5.18	121.28	124.90

Continued on next page...

Continued from previous page...

Mol	Chain	Res	Type	Atoms	Z	Observed($^{\circ}$)	Ideal($^{\circ}$)
3	E	11	DT	C5-C4-O4	-5.15	121.30	124.90
6	H	1	DG	O4'-C1'-N9	5.00	111.50	108.00

There are no chirality outliers.

There are no planarity outliers.

5.2 Too-close contacts ⓘ

In the following table, the Non-H and H(model) columns list the number of non-hydrogen atoms and hydrogen atoms in the chain respectively. The H(added) column lists the number of hydrogen atoms added and optimized by MolProbity. The Clashes column lists the number of clashes within the asymmetric unit, whereas Symm-Clashes lists symmetry related clashes.

Mol	Chain	Non-H	H(model)	H(added)	Clashes	Symm-Clashes
1	A	3730	0	3642	169	1
1	B	3713	0	3621	188	1
2	C	1466	0	1284	80	0
2	D	1446	0	1231	47	0
3	E	140	0	78	2	0
4	F	225	0	126	11	0
5	G	139	0	78	4	0
6	H	226	0	124	10	0
7	A	2	0	0	0	0
7	B	1	0	0	0	0
7	C	1	0	0	0	0
7	D	1	0	0	0	0
7	G	1	0	0	0	0
8	H	54	38	36	12	0
9	A	8	0	0	3	0
9	B	3	0	0	0	0
9	C	2	0	0	2	0
9	D	1	0	0	0	0
All	All	11159	38	10220	482	1

The all-atom clashscore is defined as the number of clashes found per 1000 atoms (including hydrogen atoms). The all-atom clashscore for this structure is 23.

All (482) close contacts within the same asymmetric unit are listed below, sorted by their clash magnitude.

Atom-1	Atom-2	Interatomic distance (Å)	Clash overlap (Å)
1:A:146:ASP:HB3	1:A:148:THR:HG23	1.24	1.11
1:B:256:ILE:HD13	1:B:321:LEU:HD21	1.30	1.09
1:B:146:ASP:HB3	1:B:148:THR:HG23	1.31	1.09
1:A:70:MET:HE1	1:A:78:ASP:HB3	1.28	1.09
1:B:194:ILE:HG12	1:B:350:ILE:HD13	1.24	1.09
1:A:293:ARG:HB3	1:A:293:ARG:HH11	1.03	1.08
1:B:70:MET:HE1	1:B:78:ASP:HB3	1.36	1.07
1:B:307:ASN:HD22	1:B:310:LEU:HB2	0.92	1.06
1:A:256:ILE:HD13	1:A:321:LEU:HD21	1.36	1.04
1:A:293:ARG:CB	1:A:293:ARG:HH11	1.72	1.02
1:B:307:ASN:ND2	1:B:310:LEU:HB2	1.74	1.01
1:A:139:VAL:HG11	1:A:154:VAL:O	1.64	0.96
1:B:194:ILE:HG12	1:B:350:ILE:CD1	1.93	0.96
1:A:70:MET:HE1	1:A:78:ASP:CB	1.94	0.96
1:B:307:ASN:HD22	1:B:310:LEU:CB	1.79	0.95
1:B:20:TYR:CD1	2:D:513:HIS:HB2	2.05	0.91
1:A:293:ARG:NH1	1:A:293:ARG:HB3	1.87	0.90
1:B:41:GLN:HG2	1:B:88:MET:HE2	1.54	0.90
1:B:252:GLU:OE1	1:B:308:THR:HG21	1.70	0.89
2:C:526:MET:CE	2:C:529:LEU:HD12	2.03	0.88
1:B:60:ARG:HH11	1:B:60:ARG:CG	1.87	0.88
1:A:211:PRO:O	1:A:478:ARG:NH2	2.07	0.87
2:C:536:TYR:HD1	2:C:603:LEU:HD12	1.38	0.87
1:A:146:ASP:HB3	1:A:148:THR:CG2	2.03	0.86
1:A:288:ARG:NH1	1:A:290:GLU:OE2	2.08	0.86
2:C:431:LEU:HD13	2:C:479:MET:HE3	1.58	0.85
1:B:281:VAL:HG21	1:B:314:TYR:CG	2.12	0.84
2:C:536:TYR:CD1	2:C:603:LEU:HD12	2.13	0.84
1:B:41:GLN:HA	1:B:88:MET:HE1	1.60	0.84
1:B:350:ILE:HA	1:B:463:MET:HE1	1.60	0.83
1:A:194:ILE:HD11	1:A:463:MET:HE3	1.61	0.82
1:A:41:GLN:HA	1:A:88:MET:HE1	1.61	0.82
1:B:254:ILE:HD13	1:B:312:LEU:HD13	1.61	0.81
1:B:380:ARG:NH2	1:B:409:TYR:O	2.11	0.81
2:D:516:THR:O	2:D:520:THR:HG23	1.80	0.80
2:C:520:THR:HG21	2:C:622:MET:HG3	1.64	0.80
2:C:486:GLY:O	2:C:491:PHE:HD2	1.64	0.80
1:B:167:SER:C	1:B:168:THR:HG22	2.01	0.79
1:B:12:ILE:HG22	1:B:13:MET:N	1.97	0.79
1:A:117[B]:ARG:HD2	1:B:77:GLY:HA2	1.64	0.79
2:C:476:ILE:HD12	2:C:521:PHE:CE2	2.18	0.79
1:B:60:ARG:HH11	1:B:60:ARG:HG2	1.47	0.78

Continued on next page...

Continued from previous page...

Atom-1	Atom-2	Interatomic distance (Å)	Clash overlap (Å)
5:G:13:DC:H42	6:H:7:DG:H1	1.32	0.78
1:A:229:TYR:CD1	1:A:342:ILE:HG12	2.18	0.77
2:C:526:MET:HE2	2:C:529:LEU:HD12	1.65	0.77
2:D:520:THR:HG21	2:D:622:MET:HG3	1.67	0.77
1:B:44:ILE:HD12	1:B:88:MET:HE3	1.66	0.77
1:B:41:GLN:HA	1:B:88:MET:CE	2.15	0.76
1:B:350:ILE:HG23	1:B:463:MET:CE	2.15	0.76
1:A:169:GLY:HA2	1:A:176:THR:HG22	1.68	0.75
1:A:259:ILE:HB	1:A:260:PRO:CD	2.17	0.75
8:H:102:1UV:C04	8:H:102:1UV:H151	2.16	0.75
1:A:229:TYR:CG	1:A:342:ILE:HG12	2.20	0.75
1:A:296:LEU:HD23	1:A:297:ARG:N	2.01	0.74
1:A:445:LYS:O	1:A:449:LEU:HD12	1.87	0.74
2:C:526:MET:HE1	2:C:529:LEU:HD12	1.68	0.74
1:B:70:MET:HE1	1:B:78:ASP:CB	2.14	0.74
1:B:146:ASP:HB3	1:B:148:THR:CG2	2.14	0.73
1:B:44:ILE:HD12	1:B:88:MET:CE	2.17	0.73
8:H:101:1UV:C04	8:H:101:1UV:H151	2.18	0.73
2:C:479:MET:O	2:C:483:ILE:HG13	1.89	0.73
1:A:338:ARG:HD2	1:A:340:VAL:CG1	2.19	0.73
1:A:23:TYR:CB	2:C:509:THR:HG21	2.19	0.73
1:A:317:LYS:HD3	1:A:318:TYR:CE2	2.23	0.73
1:B:190:ALA:O	1:B:194:ILE:HG13	1.88	0.73
1:B:87:ARG:HA	1:B:90:GLN:HG3	1.71	0.72
1:A:96:GLU:HG2	1:A:126:ILE:HD13	1.72	0.72
1:B:219:ILE:HB	1:B:482:LEU:HD23	1.70	0.72
2:C:516:THR:O	2:C:520:THR:HG23	1.89	0.72
6:H:6:DT:H2''	6:H:7:DG:H5'	1.71	0.72
1:A:307:ASN:ND2	1:A:310:LEU:HB2	2.04	0.71
1:A:60:ARG:HH11	1:A:60:ARG:CG	2.04	0.71
1:B:281:VAL:HG21	1:B:314:TYR:CB	2.20	0.71
2:C:431:LEU:HD13	2:C:479:MET:CE	2.20	0.71
2:D:516:THR:HG23	2:D:622:MET:CE	2.20	0.71
1:B:307:ASN:ND2	1:B:310:LEU:H	1.89	0.70
1:A:259:ILE:HB	1:A:260:PRO:HD2	1.74	0.70
1:A:194:ILE:HD11	1:A:463:MET:CE	2.21	0.69
1:A:41:GLN:HA	1:A:88:MET:CE	2.22	0.69
1:B:261:TYR:CD2	1:B:262:GLU:HG3	2.28	0.68
1:A:452:ILE:HD13	1:A:462:LEU:HD12	1.75	0.68
1:B:211:PRO:O	1:B:478:ARG:NH2	2.25	0.68
2:D:536:TYR:HB3	2:D:603:LEU:CD1	2.23	0.68

Continued on next page...

Continued from previous page...

Atom-1	Atom-2	Interatomic distance (Å)	Clash overlap (Å)
1:B:124:SER:OG	1:B:126:ILE:HG22	1.93	0.68
1:B:281:VAL:CG2	1:B:314:TYR:CG	2.77	0.67
1:A:338:ARG:HD2	1:A:340:VAL:HG12	1.76	0.67
1:B:41:GLN:CG	1:B:88:MET:HE2	2.25	0.67
8:H:101:1UV:C15	8:H:101:1UV:C04	2.72	0.67
1:B:350:ILE:HG23	1:B:463:MET:HE2	1.77	0.67
2:C:536:TYR:HB3	2:C:603:LEU:CD1	2.25	0.66
1:A:316:PHE:CE2	1:A:321:LEU:HD13	2.30	0.66
2:D:455:LEU:CD1	2:D:518:LEU:HD11	2.26	0.66
1:A:70:MET:CE	1:A:78:ASP:HB3	2.17	0.66
1:A:55:PHE:HA	1:A:122:ARG:HD2	1.77	0.66
1:A:44:ILE:HD12	1:A:88:MET:CE	2.26	0.66
1:A:6:ASN:HB3	2:C:605:ARG:HB3	1.76	0.66
1:A:41:GLN:HG2	1:A:88:MET:HE2	1.77	0.66
1:A:169:GLY:HA3	1:A:176:THR:O	1.96	0.65
1:B:55:PHE:HA	1:B:122:ARG:HD2	1.77	0.65
2:C:460:ILE:HD12	4:F:6:DT:H5''	1.78	0.65
2:D:516:THR:HG23	2:D:622:MET:HE2	1.79	0.65
4:F:3:DT:H4'	4:F:4:DC:OP1	1.97	0.65
1:B:288:ARG:NH1	1:B:290:GLU:OE2	2.29	0.65
2:C:564:LEU:O	2:C:567:LEU:N	2.28	0.64
1:A:20:TYR:CD1	2:C:513:HIS:HB2	2.31	0.64
1:B:350:ILE:HG23	1:B:463:MET:HE1	1.79	0.64
1:A:87:ARG:HA	1:A:90:GLN:HG3	1.80	0.64
8:H:101:1UV:C02	8:H:101:1UV:H151	2.27	0.64
1:A:60:ARG:HH11	1:A:60:ARG:HG2	1.63	0.64
1:A:439:GLU:O	1:A:443:ARG:HG3	1.98	0.64
2:C:462:THR:HG21	2:C:521:PHE:HD2	1.63	0.64
3:E:13:DA:H2''	3:E:14:DA:O5'	1.97	0.64
2:D:478:THR:O	2:D:482:THR:HG23	1.98	0.63
1:B:12:ILE:CG2	1:B:13:MET:N	2.61	0.63
2:D:611:LEU:C	2:D:611:LEU:HD13	2.19	0.63
1:A:43:ARG:HG2	1:A:73:PHE:HB3	1.79	0.63
1:A:23:TYR:HB3	2:C:509:THR:HG21	1.81	0.63
1:A:281:VAL:HG21	1:A:314:TYR:CG	2.34	0.63
2:C:629:ARG:NH1	4:F:9:DA:OP1	2.26	0.63
1:B:259:ILE:HB	1:B:260:PRO:CD	2.30	0.62
1:B:281:VAL:CG2	1:B:314:TYR:CD2	2.81	0.62
1:B:194:ILE:CG1	1:B:350:ILE:HD13	2.16	0.62
1:A:340:VAL:HB	1:A:344:PRO:HG2	1.80	0.62
2:C:441:ALA:HB1	2:C:452:ILE:HD12	1.80	0.62

Continued on next page...

Continued from previous page...

Atom-1	Atom-2	Interatomic distance (Å)	Clash overlap (Å)
8:H:102:1UV:C04	8:H:102:1UV:C15	2.76	0.62
1:B:256:ILE:CD1	1:B:321:LEU:HD21	2.19	0.62
1:B:237:VAL:HG11	1:B:322:GLN:NE2	2.14	0.62
1:B:350:ILE:CA	1:B:463:MET:HE1	2.28	0.61
2:C:611:LEU:HD13	2:C:611:LEU:C	2.21	0.61
5:G:13:DC:N3	6:H:7:DG:N2	2.42	0.61
2:C:616:ARG:O	2:C:620:VAL:HG23	1.99	0.61
1:B:23:TYR:CB	2:D:509:THR:HG21	2.31	0.61
1:B:307:ASN:ND2	1:B:310:LEU:N	2.48	0.61
2:D:623:GLY:O	2:D:629:ARG:NH2	2.33	0.61
1:A:216:GLY:O	1:A:217:ALA:HB3	2.01	0.61
8:H:102:1UV:C02	8:H:102:1UV:H151	2.30	0.61
1:B:70:MET:CE	1:B:78:ASP:HB3	2.23	0.60
1:B:167:SER:O	1:B:168:THR:HG22	2.02	0.60
2:C:626:VAL:HG11	4:F:9:DA:H3'	1.83	0.60
8:H:101:1UV:H042	8:H:101:1UV:H151	1.84	0.60
1:B:168:THR:HA	1:B:176:THR:O	2.02	0.60
1:A:146:ASP:CB	1:A:148:THR:HG23	2.16	0.59
1:B:338:ARG:HD2	1:B:340:VAL:HG12	1.84	0.59
2:D:611:LEU:O	2:D:611:LEU:HD13	2.01	0.59
1:A:118:TYR:HE2	4:F:1:DA:H5'	1.66	0.59
1:B:237:VAL:CG1	1:B:322:GLN:HE21	2.16	0.59
1:B:471:LYS:O	1:B:475:ALA:HB2	2.03	0.59
1:B:159:PHE:HB2	1:B:160:PRO:HD2	1.83	0.59
1:B:24:ILE:HG13	1:B:28:ARG:HD2	1.84	0.59
8:H:102:1UV:H042	8:H:102:1UV:H151	1.83	0.59
1:A:350:ILE:HA	1:A:463:MET:HE1	1.85	0.59
2:C:475:GLU:O	2:C:479:MET:HB2	2.03	0.58
2:C:513:HIS:O	2:C:516:THR:HG22	2.03	0.58
1:B:371:ARG:O	1:B:371:ARG:HG3	2.02	0.58
1:A:44:ILE:HD12	1:A:88:MET:HE3	1.84	0.58
1:B:167:SER:C	1:B:168:THR:CG2	2.72	0.58
2:C:514:ILE:HA	2:C:517:LEU:HD12	1.85	0.58
1:B:336:THR:CG2	1:B:337:PRO:HD2	2.33	0.58
2:C:637:VAL:HG12	2:C:639:PHE:CE2	2.39	0.58
2:D:504:MET:HG3	2:D:538:ALA:HB3	1.86	0.58
2:C:486:GLY:O	2:C:491:PHE:CD2	2.51	0.58
1:A:185:GLU:OE1	1:A:478:ARG:NH1	2.37	0.57
5:G:13:DC:N4	6:H:7:DG:H1	2.02	0.57
1:B:169:GLY:HA2	1:B:176:THR:HG22	1.85	0.57
1:B:169:GLY:HA3	1:B:176:THR:O	2.05	0.57

Continued on next page...

Continued from previous page...

Atom-1	Atom-2	Interatomic distance (Å)	Clash overlap (Å)
2:C:430:TYR:CZ	2:C:502:ILE:HD12	2.39	0.57
1:A:302:LEU:CD1	1:A:308:THR:HB	2.35	0.57
1:B:371:ARG:HG2	1:B:442:LEU:HD11	1.86	0.57
1:B:145:PHE:CD1	1:B:146:ASP:N	2.73	0.57
1:A:375:VAL:O	1:A:379:ILE:HG13	2.05	0.57
1:A:296:LEU:C	1:A:296:LEU:HD23	2.24	0.56
1:A:43:ARG:HG2	1:A:73:PHE:CB	2.35	0.56
1:A:144:ASN:HA	9:A:602:HOH:O	2.04	0.56
1:B:194:ILE:HD13	1:B:463:MET:HE2	1.87	0.56
2:D:474:GLU:O	2:D:478:THR:HG23	2.05	0.56
1:A:107:SER:OG	1:A:111:ASP:OD2	2.15	0.56
1:A:471:LYS:O	1:A:475:ALA:HB2	2.06	0.56
2:C:483:ILE:HD13	2:C:501:ILE:HD11	1.88	0.56
2:C:527:ARG:N	2:C:528:PRO:CD	2.69	0.56
2:D:536:TYR:HB3	2:D:603:LEU:HD11	1.88	0.56
1:A:171:SER:OG	1:A:172:ALA:N	2.38	0.56
2:C:594:THR:OG1	2:C:595:THR:HG22	2.06	0.56
1:A:293:ARG:H	1:A:293:ARG:NH1	2.03	0.56
1:B:281:VAL:HG23	1:B:314:TYR:CD2	2.40	0.56
2:D:632:TRP:CE2	2:D:636:ASN:ND2	2.71	0.56
1:B:24:ILE:CG1	1:B:28:ARG:HD2	2.35	0.55
1:A:97:ILE:HG12	1:A:97:ILE:O	2.06	0.55
1:A:293:ARG:NH1	1:A:293:ARG:CB	2.56	0.55
2:D:538:ALA:O	2:D:540:PRO:HD3	2.07	0.55
1:A:96:GLU:CG	1:A:126:ILE:HD13	2.36	0.55
1:B:12:ILE:HG22	1:B:13:MET:H	1.70	0.55
1:B:343:VAL:O	1:B:347:SER:HB3	2.05	0.55
1:B:44:ILE:CD1	1:B:88:MET:HE3	2.35	0.55
1:B:59:TYR:CE1	1:B:102:HIS:ND1	2.74	0.54
2:D:516:THR:HG22	2:D:517:LEU:HG	1.89	0.54
1:A:104:ASN:HB3	1:A:114:ALA:HB2	1.88	0.54
1:A:256:ILE:CD1	1:A:321:LEU:HD21	2.25	0.54
1:B:169:GLY:CA	1:B:176:THR:HG22	2.38	0.54
1:B:35:ASP:O	1:B:161:ASN:HB3	2.07	0.54
2:C:483:ILE:HD13	2:C:501:ILE:CD1	2.38	0.54
8:H:101:1UV:C15	8:H:101:1UV:H042	2.37	0.54
1:A:27:ASP:O	1:A:39:PRO:HG2	2.08	0.54
1:B:293:ARG:HH11	1:B:293:ARG:HB3	1.73	0.54
1:B:171:SER:OG	1:B:172:ALA:N	2.40	0.54
1:B:338:ARG:O	1:B:340:VAL:HG13	2.08	0.54
1:A:334:ASN:O	1:A:335:PHE:HB2	2.08	0.54

Continued on next page...

Continued from previous page...

Atom-1	Atom-2	Interatomic distance (Å)	Clash overlap (Å)
2:D:466:LYS:O	2:D:468:ALA:N	2.41	0.54
1:B:124:SER:HG	1:B:126:ILE:HG22	1.71	0.53
5:G:13:DC:H2''	5:G:14:DA:O5'	2.08	0.53
1:A:214:PRO:HA	1:A:479:LEU:HD12	1.90	0.53
1:B:126:ILE:HG23	1:B:127:ALA:N	2.22	0.53
6:H:4:DT:H2''	6:H:5:DA:H5'	1.89	0.53
1:A:293:ARG:CG	1:A:293:ARG:HH11	2.20	0.53
1:A:40:VAL:HG13	1:A:41:GLN:N	2.24	0.53
1:A:425:TYR:O	1:A:428:THR:OG1	2.20	0.53
1:A:442:LEU:O	1:A:446:ILE:HG13	2.09	0.53
2:D:520:THR:CG2	2:D:622:MET:HG3	2.37	0.52
1:A:23:TYR:CG	2:C:509:THR:HG21	2.44	0.52
1:A:434:VAL:CG1	1:A:435:LEU:N	2.71	0.52
1:B:412:THR:OG1	1:B:415:GLN:HG3	2.09	0.52
1:B:194:ILE:CD1	1:B:463:MET:HE2	2.39	0.52
6:H:3:DC:H2'	6:H:4:DT:C6	2.44	0.52
1:A:403:GLU:O	1:A:407:VAL:HG23	2.10	0.52
1:B:22:LYS:HE2	1:B:26:GLN:OE1	2.09	0.52
1:B:351:ALA:O	1:B:354:ARG:HB3	2.10	0.52
1:A:118:TYR:CE2	4:F:1:DA:H5'	2.43	0.52
2:C:529:LEU:HD22	2:C:534:HIS:HB2	1.91	0.52
1:A:414:GLU:CD	1:A:414:GLU:H	2.12	0.52
1:B:374:ILE:HD12	1:B:418:ALA:HB2	1.91	0.52
2:C:536:TYR:CD1	2:C:603:LEU:CD1	2.90	0.52
2:C:581:LYS:HB2	2:C:585:GLU:OE2	2.09	0.52
1:B:252:GLU:O	1:B:302:LEU:HD12	2.10	0.52
2:D:491:PHE:HE1	2:D:528:PRO:HB2	1.73	0.52
1:A:412:THR:HG23	1:A:415:GLN:OE1	2.10	0.52
1:A:168:THR:HA	1:A:176:THR:O	2.10	0.51
1:A:252:GLU:OE1	1:A:308:THR:HG21	2.10	0.51
1:A:126:ILE:HG12	1:A:159:PHE:CE1	2.45	0.51
1:A:60:ARG:NH1	1:A:60:ARG:CG	2.66	0.51
2:C:431:LEU:CD1	2:C:479:MET:CE	2.87	0.51
1:A:354:ARG:HG3	1:A:459:MET:CE	2.41	0.51
1:B:111:ASP:HB2	1:B:112:PRO:HD2	1.92	0.51
2:D:618:VAL:HG12	2:D:619:ASN:N	2.25	0.51
6:H:6:DT:C2'	6:H:7:DG:H5'	2.38	0.51
1:A:194:ILE:CD1	1:A:463:MET:CE	2.89	0.51
2:C:416:LEU:HD23	2:C:417:THR:C	2.30	0.51
2:C:526:MET:C	2:C:528:PRO:HD2	2.31	0.51
1:A:86:VAL:O	1:A:90:GLN:HG2	2.11	0.51

Continued on next page...

Continued from previous page...

Atom-1	Atom-2	Interatomic distance (Å)	Clash overlap (Å)
2:D:455:LEU:HD12	2:D:518:LEU:HD11	1.91	0.50
1:A:434:VAL:HG13	1:A:435:LEU:N	2.26	0.50
1:B:452:ILE:HA	1:B:458:THR:HG22	1.93	0.50
1:A:77:GLY:HA2	1:B:117[B]:ARG:CD	2.41	0.50
1:B:240:SER:CB	1:B:321:LEU:HD22	2.42	0.50
1:A:268:LEU:CD2	1:A:272:ILE:HD11	2.42	0.50
1:A:77:GLY:O	1:A:81:ILE:HG13	2.12	0.50
1:B:60:ARG:HH11	1:B:60:ARG:HG3	1.74	0.50
1:A:350:ILE:HG23	1:A:463:MET:CE	2.42	0.50
2:C:509:THR:O	2:C:512:ALA:HB3	2.11	0.50
4:F:3:DT:C5	4:F:4:DC:N4	2.80	0.50
1:B:59:TYR:HB3	1:B:120:GLU:HB3	1.94	0.49
2:C:520:THR:CG2	2:C:622:MET:HG3	2.39	0.49
1:A:420:VAL:HG12	1:A:421:THR:HG23	1.94	0.49
1:B:220:GLN:HG2	1:B:483:GLU:HB2	1.94	0.49
2:C:597:ASN:C	2:C:599:GLU:H	2.15	0.49
1:B:79:SER:OG	8:H:101:1UV:O09	2.27	0.49
1:A:355:GLU:OE2	1:A:355:GLU:HA	2.11	0.49
1:A:425:TYR:CD1	1:B:398:LYS:HD2	2.47	0.49
1:A:169:GLY:CA	1:A:176:THR:HG22	2.38	0.49
1:A:384:ILE:HB	1:A:387:GLU:HG3	1.94	0.49
1:A:397:ASN:O	1:A:398:LYS:C	2.50	0.49
1:A:95:ARG:HA	1:A:214:PRO:HB3	1.94	0.49
4:F:8:DC:H2"	4:F:9:DA:H5'	1.94	0.49
1:A:6:ASN:OD1	1:A:6:ASN:N	2.38	0.49
1:B:126:ILE:CG2	1:B:127:ALA:N	2.75	0.49
1:B:194:ILE:CG1	1:B:350:ILE:CD1	2.79	0.49
1:A:256:ILE:HD13	1:A:321:LEU:CD2	2.26	0.49
1:A:70:MET:HE2	1:A:78:ASP:HA	1.95	0.49
1:A:117[B]:ARG:CD	1:B:77:GLY:HA2	2.39	0.49
1:B:70:MET:HE2	1:B:78:ASP:HA	1.93	0.49
2:C:536:TYR:N	2:C:536:TYR:CD2	2.81	0.49
1:A:44:ILE:HG12	1:A:69:ILE:HD13	1.94	0.49
1:A:40:VAL:HG23	1:A:74:HIS:CD2	2.48	0.49
2:C:627:GLU:N	2:C:628:PRO:CD	2.76	0.49
2:D:527:ARG:N	2:D:528:PRO:CD	2.76	0.49
1:B:77:GLY:O	1:B:81:ILE:HG13	2.12	0.48
2:C:591:LEU:HD22	2:C:596:MET:SD	2.53	0.48
1:A:290:GLU:HB2	1:A:297:ARG:HG2	1.95	0.48
2:C:433:GLU:HB2	2:C:505:THR:HG22	1.96	0.48
2:C:476:ILE:HD12	2:C:521:PHE:CD2	2.49	0.48

Continued on next page...

Continued from previous page...

Atom-1	Atom-2	Interatomic distance (Å)	Clash overlap (Å)
1:B:272:ILE:HG22	1:B:287:VAL:HG21	1.95	0.48
2:C:629:ARG:O	2:C:633:ILE:HG13	2.13	0.48
1:A:95:ARG:HB2	1:A:180:PRO:HB2	1.96	0.48
1:A:40:VAL:CG1	1:A:41:GLN:N	2.76	0.48
1:B:237:VAL:CG1	1:B:322:GLN:NE2	2.75	0.48
1:A:219:ILE:HB	1:A:482:LEU:HD23	1.95	0.48
1:A:84:ALA:O	1:A:88:MET:HG3	2.13	0.48
1:B:333:ASP:O	1:B:334:ASN:C	2.51	0.48
2:C:538:ALA:O	2:C:540:PRO:HD3	2.14	0.48
1:A:96:GLU:HG2	1:A:126:ILE:CD1	2.41	0.48
2:C:629:ARG:HD2	4:F:9:DA:OP1	2.13	0.48
1:B:417:GLU:O	1:B:421:THR:HG23	2.13	0.47
1:B:237:VAL:HG11	1:B:322:GLN:HE21	1.74	0.47
1:B:412:THR:HG23	1:B:415:GLN:OE1	2.14	0.47
1:B:13:MET:CE	2:D:520:THR:HG22	2.44	0.47
1:B:181:HIS:CD2	1:B:211:PRO:HA	2.50	0.47
1:B:292:ASP:O	1:B:294:ASP:N	2.47	0.47
1:B:37:LEU:CD1	1:B:155:LEU:HD12	2.44	0.47
1:B:429:ASN:O	1:B:429:ASN:CG	2.51	0.47
1:B:336:THR:HG22	1:B:337:PRO:HD2	1.96	0.47
1:B:66:VAL:O	1:B:69:ILE:HB	2.14	0.47
2:C:441:ALA:O	2:C:445:ARG:HB3	2.15	0.47
2:D:446:ASP:O	2:D:448:LYS:N	2.48	0.47
1:A:359:ALA:HA	1:A:362:ARG:NH1	2.29	0.47
1:B:139:VAL:HG11	1:B:154:VAL:O	2.15	0.47
2:C:462:THR:N	9:C:802:HOH:O	2.47	0.47
1:A:79:SER:OG	8:H:102:1UV:O09	2.26	0.47
1:A:217:ALA:N	1:A:258:GLU:OE1	2.43	0.47
1:B:10:GLU:HA	2:D:617:ARG:HG2	1.97	0.47
2:D:483:ILE:HG22	2:D:483:ILE:O	2.15	0.47
2:D:592:TRP:HA	2:D:596:MET:HB2	1.97	0.47
2:D:424:PRO:O	2:D:499:ASP:HB2	2.15	0.47
1:A:382:ILE:HD12	1:A:432:VAL:HG23	1.96	0.47
1:B:110:GLY:HA3	1:B:264:ASN:HD21	1.80	0.47
1:B:157:ALA:O	1:B:353:ARG:HD3	2.15	0.47
1:A:41:GLN:CG	1:A:88:MET:HE2	2.44	0.46
1:A:70:MET:CE	1:A:78:ASP:CB	2.81	0.46
1:B:10:GLU:C	1:B:12:ILE:H	2.17	0.46
1:B:167:SER:O	1:B:168:THR:CB	2.63	0.46
1:B:281:VAL:HG21	1:B:314:TYR:CD2	2.50	0.46
2:C:536:TYR:HB3	2:C:603:LEU:HD13	1.97	0.46

Continued on next page...

Continued from previous page...

Atom-1	Atom-2	Interatomic distance (Å)	Clash overlap (Å)
1:A:181:HIS:CD2	1:A:211:PRO:HA	2.50	0.46
1:A:412:THR:HG23	1:A:415:GLN:CD	2.35	0.46
1:B:60:ARG:NH1	1:B:60:ARG:CG	2.56	0.46
1:B:51:ASP:O	1:B:60:ARG:NH2	2.48	0.46
2:C:455:LEU:CD1	2:C:518:LEU:HD11	2.46	0.46
2:D:483:ILE:HD13	2:D:501:ILE:CD1	2.46	0.46
2:D:615:GLU:O	2:D:619:ASN:HB2	2.15	0.46
1:A:28:ARG:NH2	3:E:14:DA:H4'	2.30	0.46
1:A:51:ASP:O	1:A:52:SER:HB2	2.14	0.46
2:C:536:TYR:CB	2:C:603:LEU:CD1	2.92	0.46
2:D:483:ILE:HD13	2:D:501:ILE:HD11	1.97	0.46
1:A:459:MET:SD	1:A:459:MET:C	2.94	0.46
1:B:216:GLY:O	1:B:217:ALA:HB3	2.16	0.46
1:B:372:LEU:HD22	1:B:376:GLU:HG3	1.97	0.46
1:B:336:THR:HG23	1:B:337:PRO:HD2	1.98	0.45
1:B:110:GLY:HA3	1:B:264:ASN:ND2	2.31	0.45
1:B:41:GLN:CB	1:B:88:MET:HE2	2.45	0.45
1:B:95:ARG:HB2	1:B:180:PRO:HB2	1.97	0.45
6:H:3:DC:H4'	6:H:4:DT:OP1	2.16	0.45
1:A:194:ILE:HG12	1:A:463:MET:HE2	1.99	0.45
2:C:623:GLY:O	2:C:629:ARG:NH2	2.48	0.45
1:A:13:MET:CE	2:C:520:THR:HG22	2.46	0.45
1:A:424:LEU:HD23	1:B:424:LEU:HD23	1.98	0.45
1:A:139:VAL:HG13	1:A:140:PRO:HD2	1.98	0.45
1:B:10:GLU:O	1:B:12:ILE:N	2.50	0.45
1:B:459:MET:C	1:B:459:MET:SD	2.94	0.45
1:A:59:TYR:CD2	1:A:122:ARG:HG2	2.52	0.45
1:A:273:ASP:O	1:A:277:VAL:HG23	2.17	0.45
1:B:281:VAL:HG21	1:B:314:TYR:HB2	1.98	0.45
1:B:66:VAL:HG12	1:B:67:GLY:N	2.31	0.45
1:A:254:ILE:HD13	1:A:312:LEU:HD13	1.99	0.45
1:A:194:ILE:HG12	1:A:350:ILE:HD13	1.98	0.45
1:A:373:HIS:CE1	1:A:412:THR:HG21	2.52	0.45
1:B:240:SER:HB2	1:B:321:LEU:HD22	1.99	0.45
1:B:432:VAL:HG13	1:B:436:GLN:HG3	1.98	0.45
1:A:387:GLU:HG2	1:A:387:GLU:H	1.46	0.45
1:A:142:ALA:O	1:A:150:LYS:HA	2.18	0.44
1:A:391:LEU:HD22	1:A:405:LEU:HD23	1.98	0.44
1:B:59:TYR:CD2	1:B:122:ARG:HG2	2.52	0.44
1:B:132:GLN:O	1:B:133:ASP:HB2	2.17	0.44
1:B:372:LEU:O	1:B:372:LEU:HD22	2.18	0.44

Continued on next page...

Continued from previous page...

Atom-1	Atom-2	Interatomic distance (Å)	Clash overlap (Å)
1:B:338:ARG:HD2	1:B:340:VAL:CG1	2.47	0.44
2:D:516:THR:HG22	2:D:517:LEU:N	2.32	0.44
4:F:8:DC:H2''	4:F:9:DA:C5'	2.47	0.44
1:A:247:LEU:O	1:A:249:GLY:N	2.51	0.44
1:A:391:LEU:HD21	1:A:404:ASN:HB3	1.99	0.44
2:C:591:LEU:CD2	2:C:596:MET:HG3	2.47	0.44
1:B:293:ARG:NE	2:C:592:TRP:CD1	2.85	0.44
2:C:596:MET:O	2:C:598:PRO:HD3	2.18	0.44
1:A:161:ASN:ND2	9:A:601:HOH:O	2.50	0.44
1:B:159:PHE:HB2	1:B:160:PRO:CD	2.48	0.44
1:B:23:TYR:HB2	2:D:509:THR:HG21	1.99	0.44
1:B:239:ARG:HG3	1:B:316:PHE:CE2	2.53	0.44
1:B:44:ILE:HD12	1:B:88:MET:HE1	1.99	0.44
2:D:536:TYR:CB	2:D:603:LEU:HD11	2.48	0.44
1:A:157:ALA:O	1:A:353:ARG:HD3	2.18	0.44
2:C:491:PHE:HD1	2:C:528:PRO:HG2	1.83	0.44
2:C:611:LEU:HD13	2:C:611:LEU:O	2.17	0.44
1:B:23:TYR:HE1	1:B:28:ARG:HH21	1.66	0.43
1:B:194:ILE:CD1	1:B:463:MET:CE	2.96	0.43
2:D:580:TYR:CE1	2:D:586:MET:HG2	2.53	0.43
1:B:59:TYR:CE1	1:B:102:HIS:CE1	3.05	0.43
1:B:342:ILE:HD13	1:B:342:ILE:HA	1.60	0.43
1:A:132:GLN:O	1:A:133:ASP:HB2	2.18	0.43
1:A:27:ASP:C	1:A:39:PRO:HG2	2.38	0.43
1:B:40:VAL:CG1	1:B:41:GLN:N	2.80	0.43
1:A:415:GLN:O	1:A:419:ILE:HG13	2.18	0.43
1:B:237:VAL:HG13	1:B:322:GLN:HE21	1.83	0.43
2:C:511:GLY:O	2:C:515:GLN:HG3	2.19	0.43
1:B:259:ILE:HB	1:B:260:PRO:HD2	2.00	0.43
1:A:285:ALA:HB3	1:A:301:GLU:HG2	2.01	0.43
8:H:102:1UV:H042	8:H:102:1UV:C15	2.44	0.43
1:A:144:ASN:CA	9:A:602:HOH:O	2.66	0.43
1:B:345:ILE:HG22	1:B:346:LEU:N	2.33	0.43
1:B:160:PRO:HA	1:B:349:TYR:CE1	2.54	0.43
1:B:130:LEU:HD23	1:B:157:ALA:HA	2.00	0.43
2:C:464:LYS:HZ2	4:F:8:DC:P	2.42	0.43
6:H:5:DA:C2	6:H:6:DT:C2	3.06	0.43
2:C:460:ILE:O	9:C:802:HOH:O	2.20	0.43
1:A:371:ARG:HG2	1:A:442:LEU:HD11	2.00	0.43
2:C:633:ILE:O	2:C:637:VAL:HB	2.19	0.43
1:A:261:TYR:CD2	1:A:262:GLU:HG3	2.54	0.42

Continued on next page...

Continued from previous page...

Atom-1	Atom-2	Interatomic distance (Å)	Clash overlap (Å)
1:B:359:ALA:HA	1:B:362:ARG:HH11	1.84	0.42
1:B:41:GLN:CA	1:B:88:MET:HE1	2.42	0.42
1:A:412:THR:HG23	1:A:415:GLN:CG	2.49	0.42
1:A:194:ILE:CD1	1:A:463:MET:HE2	2.49	0.42
1:B:23:TYR:CG	2:D:509:THR:HG21	2.54	0.42
1:B:321:LEU:HA	1:B:321:LEU:HD23	1.77	0.42
2:C:442:LYS:O	2:C:445:ARG:HD3	2.19	0.42
1:B:162:LEU:HD21	1:B:178:ILE:HD12	2.00	0.42
1:B:296:LEU:C	1:B:296:LEU:HD23	2.39	0.42
1:B:442:LEU:HA	1:B:442:LEU:HD23	1.67	0.42
1:A:293:ARG:CD	2:D:589:ASP:HA	2.50	0.42
2:C:485:ALA:HB3	2:C:491:PHE:CE2	2.54	0.42
2:D:441:ALA:HB1	2:D:452:ILE:HD12	2.02	0.42
1:B:242:THR:HG22	1:B:256:ILE:HG12	2.02	0.42
1:B:13:MET:HE2	2:D:618:VAL:HG22	2.01	0.42
1:A:87:ARG:C	1:A:89:SER:H	2.23	0.42
1:B:440:ALA:O	1:B:441:GLU:C	2.57	0.42
1:A:268:LEU:HD22	1:A:272:ILE:HD11	2.00	0.42
1:A:320:ASP:C	1:A:322:GLN:N	2.69	0.42
1:B:167:SER:O	1:B:168:THR:CG2	2.66	0.42
1:B:34:ARG:HD2	1:B:352:HIS:ND1	2.34	0.42
1:B:89:SER:HA	1:B:99:VAL:O	2.20	0.42
2:C:529:LEU:HA	2:C:529:LEU:HD23	1.77	0.42
1:A:350:ILE:HG23	1:A:463:MET:HE2	2.02	0.42
1:B:146:ASP:O	1:B:147:ASP:HB2	2.20	0.42
2:C:597:ASN:O	2:C:599:GLU:N	2.52	0.42
2:C:423:ASN:O	2:C:427:ASN:HB2	2.19	0.41
2:C:430:TYR:CE2	2:C:502:ILE:HD12	2.55	0.41
2:C:529:LEU:HD22	2:C:534:HIS:CB	2.50	0.41
1:A:77:GLY:HA2	1:B:117[B]:ARG:HD3	2.03	0.41
1:B:60:ARG:HG3	1:B:60:ARG:NH1	2.32	0.41
1:A:28:ARG:NH1	2:C:510:ASP:OD1	2.37	0.41
2:D:525:TYR:O	2:D:526:MET:HG3	2.20	0.41
2:D:560:THR:C	2:D:562:GLY:N	2.73	0.41
1:B:350:ILE:CG2	1:B:463:MET:HE1	2.48	0.41
1:A:349:TYR:O	1:A:352:HIS:HB3	2.21	0.41
2:D:458:LYS:HB2	6:H:6:DT:O2	2.21	0.41
1:A:245:GLU:OE2	1:A:297:ARG:NH2	2.53	0.41
1:B:116:MET:HB3	1:B:116:MET:HE3	1.85	0.41
2:D:491:PHE:CE1	2:D:528:PRO:HB2	2.55	0.41
1:B:130:LEU:HA	1:B:130:LEU:HD23	1.88	0.41

Continued on next page...

Continued from previous page...

Atom-1	Atom-2	Interatomic distance (Å)	Clash overlap (Å)
1:B:13:MET:HE1	2:D:520:THR:CG2	2.50	0.41
1:B:320:ASP:C	1:B:322:GLN:N	2.74	0.41
2:C:416:LEU:HD12	2:C:482:THR:CB	2.50	0.41
1:A:173:GLY:C	1:A:174:TYR:CD2	2.94	0.41
1:A:358:LEU:HA	1:A:358:LEU:HD23	1.88	0.41
1:B:406:LYS:HE2	1:B:413:GLU:HA	2.03	0.41
2:C:516:THR:HG23	2:C:622:MET:CE	2.50	0.41
1:B:13:MET:HE2	2:D:520:THR:HG22	2.03	0.41
1:B:48:MET:CE	1:B:122:ARG:HA	2.50	0.41
1:B:302:LEU:HD12	1:B:302:LEU:H	1.85	0.41
1:B:435:LEU:HA	1:B:435:LEU:HD23	1.88	0.41
2:C:433:GLU:HG3	2:C:514:ILE:HD13	2.02	0.41
1:A:168:THR:HA	1:A:169:GLY:HA3	1.86	0.41
1:A:190:ALA:O	1:A:194:ILE:HG13	2.21	0.41
1:A:228:ALA:HA	1:A:233:LYS:O	2.20	0.41
1:A:90:GLN:HB3	1:A:92:TRP:CH2	2.56	0.41
1:B:385:LEU:HA	1:B:385:LEU:HD23	1.84	0.41
1:A:393:ARG:NH1	1:B:386:ASP:OD2	2.54	0.41
1:A:261:TYR:CE2	1:A:262:GLU:HG3	2.56	0.40
1:A:424:LEU:HA	1:A:424:LEU:HD23	1.74	0.40
1:A:397:ASN:HA	1:B:428:THR:OG1	2.22	0.40
1:A:452:ILE:CD1	1:A:462:LEU:HD12	2.47	0.40
1:B:139:VAL:HG13	1:B:140:PRO:HD2	2.02	0.40
1:B:462:LEU:HA	1:B:462:LEU:HD23	1.68	0.40
1:A:433:VAL:O	1:A:434:VAL:C	2.59	0.40
1:B:290:GLU:OE1	1:B:297:ARG:NH1	2.52	0.40
1:B:116:MET:HG2	1:B:116:MET:O	2.21	0.40
1:A:268:LEU:HD22	1:A:272:ILE:CD1	2.51	0.40
1:A:424:LEU:CD2	1:B:424:LEU:HD23	2.52	0.40
1:B:307:ASN:HD22	1:B:310:LEU:N	2.16	0.40

All (1) symmetry-related close contacts are listed below. The label for Atom-2 includes the symmetry operator and encoded unit-cell translations to be applied.

Atom-1	Atom-2	Interatomic distance (Å)	Clash overlap (Å)
1:A:393:ARG:NH2	1:B:279:ASN:O[4_455]	2.06	0.14

5.3 Torsion angles

5.3.1 Protein backbone

In the following table, the Percentiles column shows the percent Ramachandran outliers of the chain as a percentile score with respect to all X-ray entries followed by that with respect to entries of similar resolution.

The Analysed column shows the number of residues for which the backbone conformation was analysed, and the total number of residues.

Mol	Chain	Analysed	Favoured	Allowed	Outliers	Percentiles	
1	A	481/496 (97%)	438 (91%)	35 (7%)	8 (2%)	10	43
1	B	481/496 (97%)	434 (90%)	37 (8%)	10 (2%)	8	37
2	C	202/268 (75%)	183 (91%)	17 (8%)	2 (1%)	17	55
2	D	204/268 (76%)	183 (90%)	17 (8%)	4 (2%)	8	39
All	All	1368/1528 (90%)	1238 (90%)	106 (8%)	24 (2%)	9	42

All (24) Ramachandran outliers are listed below:

Mol	Chain	Res	Type
1	B	168	THR
1	A	217	ALA
1	A	248	LYS
1	B	11	ASP
1	B	293	ARG
2	C	496	ALA
2	D	467	MET
2	D	600	THR
1	A	116	MET
1	A	397	ASN
1	B	157	ALA
2	D	447	ARG
1	A	249	GLY
1	B	217	ALA
1	A	221	GLY
1	B	169	GLY
1	B	334	ASN
1	A	4	ILE
1	B	345	ILE
1	B	221	GLY
2	C	598	PRO
1	A	169	GLY

Continued on next page...

Continued from previous page...

Mol	Chain	Res	Type
1	B	4	ILE
2	D	423	ASN

5.3.2 Protein sidechains ⓘ

In the following table, the Percentiles column shows the percent sidechain outliers of the chain as a percentile score with respect to all X-ray entries followed by that with respect to entries of similar resolution.

The Analysed column shows the number of residues for which the sidechain conformation was analysed, and the total number of residues.

Mol	Chain	Analysed	Rotameric	Outliers	Percentiles	
1	A	378/431 (88%)	345 (91%)	33 (9%)	11	38
1	B	376/431 (87%)	334 (89%)	42 (11%)	6	27
2	C	117/224 (52%)	101 (86%)	16 (14%)	4	18
2	D	109/224 (49%)	99 (91%)	10 (9%)	10	35
All	All	980/1310 (75%)	879 (90%)	101 (10%)	8	30

All (101) residues with a non-rotameric sidechain are listed below:

Mol	Chain	Res	Type
1	A	6	ASN
1	A	9	LEU
1	A	28	ARG
1	A	34	ARG
1	A	58	SER
1	A	90	GLN
1	A	91	ASN
1	A	97	ILE
1	A	102	HIS
1	A	111	ASP
1	A	136	LYS
1	A	162	LEU
1	A	168	THR
1	A	208	LEU
1	A	236	VAL
1	A	293	ARG
1	A	297	ARG
1	A	308	THR
1	A	321	LEU

Continued on next page...

Continued from previous page...

Mol	Chain	Res	Type
1	A	338	ARG
1	A	342	ILE
1	A	347	SER
1	A	371	ARG
1	A	385	LEU
1	A	387	GLU
1	A	412	THR
1	A	414	GLU
1	A	415	GLN
1	A	420	VAL
1	A	428	THR
1	A	432	VAL
1	A	462	LEU
1	A	476	THR
1	B	4	ILE
1	B	6	ASN
1	B	9	LEU
1	B	12	ILE
1	B	16	ARG
1	B	60	ARG
1	B	70	MET
1	B	96	GLU
1	B	102	HIS
1	B	116	MET
1	B	122	ARG
1	B	139	VAL
1	B	162	LEU
1	B	167	SER
1	B	168	THR
1	B	177	ASP
1	B	198	THR
1	B	208	LEU
1	B	268	LEU
1	B	274	ASP
1	B	293	ARG
1	B	297	ARG
1	B	301	GLU
1	B	302	LEU
1	B	308	THR
1	B	310	LEU
1	B	321	LEU
1	B	338	ARG

Continued on next page...

Continued from previous page...

Mol	Chain	Res	Type
1	B	347	SER
1	B	371	ARG
1	B	372	LEU
1	B	381	VAL
1	B	385	LEU
1	B	393	ARG
1	B	414	GLU
1	B	420	VAL
1	B	432	VAL
1	B	434	VAL
1	B	452	ILE
1	B	462	LEU
1	B	476	THR
1	B	478	ARG
2	C	429	LEU
2	C	435	ASP
2	C	436	SER
2	C	445	ARG
2	C	453	LEU
2	C	475	GLU
2	C	509	THR
2	C	514	ILE
2	C	516	THR
2	C	524	ARG
2	C	534	HIS
2	C	536	TYR
2	C	586	MET
2	C	595	THR
2	C	603	LEU
2	C	605	ARG
2	D	429	LEU
2	D	436	SER
2	D	445	ARG
2	D	453	LEU
2	D	514	ILE
2	D	516	THR
2	D	524	ARG
2	D	595	THR
2	D	603	LEU
2	D	619	ASN

Some sidechains can be flipped to improve hydrogen bonding and reduce clashes. All (3) such sidechains are listed below:

Mol	Chain	Res	Type
1	B	307	ASN
1	B	322	GLN
2	C	636	ASN

5.3.3 RNA [i](#)

There are no RNA molecules in this entry.

5.4 Non-standard residues in protein, DNA, RNA chains [i](#)

There are no non-standard protein/DNA/RNA residues in this entry.

5.5 Carbohydrates [i](#)

There are no carbohydrates in this entry.

5.6 Ligand geometry [i](#)

Of 8 ligands modelled in this entry, 6 are monoatomic - leaving 2 for Mogul analysis.

In the following table, the Counts columns list the number of bonds (or angles) for which Mogul statistics could be retrieved, the number of bonds (or angles) that are observed in the model and the number of bonds (or angles) that are defined in the Chemical Component Dictionary. The Link column lists molecule types, if any, to which the group is linked. The Z score for a bond length (or angle) is the number of standard deviations the observed value is removed from the expected value. A bond length (or angle) with $|Z| > 2$ is considered an outlier worth inspection. RMSZ is the root-mean-square of all Z scores of the bond lengths (or angles).

Mol	Type	Chain	Res	Link	Bond lengths			Bond angles		
					Counts	RMSZ	# Z > 2	Counts	RMSZ	# Z > 2
8	1UV	H	101	7	21,31,31	2.02	6 (28%)	20,48,48	3.28	12 (60%)
8	1UV	H	102	7	21,31,31	1.94	7 (33%)	20,48,48	3.56	14 (70%)

In the following table, the Chirals column lists the number of chiral outliers, the number of chiral centers analysed, the number of these observed in the model and the number defined in the Chemical Component Dictionary. Similar counts are reported in the Torsion and Rings columns. '-' means no outliers of that kind were identified.

Mol	Type	Chain	Res	Link	Chirals	Torsions	Rings
8	1UV	H	101	7	-	0/4/33/33	0/3/5/5
8	1UV	H	102	7	-	0/4/33/33	0/3/5/5

All (13) bond length outliers are listed below:

Mol	Chain	Res	Type	Atoms	Z	Observed(Å)	Ideal(Å)
8	H	101	1UV	O16-C15	-5.07	1.38	1.43
8	H	101	1UV	O16-C17	-4.86	1.37	1.42
8	H	102	1UV	O16-C17	-4.46	1.37	1.42
8	H	102	1UV	O16-C15	-4.40	1.38	1.43
8	H	102	1UV	C21-C22	-2.27	1.49	1.53
8	H	101	1UV	C21-C22	-2.12	1.49	1.53
8	H	102	1UV	C17-C18	-2.02	1.48	1.50
8	H	101	1UV	C14-C13	2.12	1.46	1.43
8	H	102	1UV	C27-C25	2.22	1.38	1.35
8	H	101	1UV	C27-C25	2.29	1.38	1.35
8	H	102	1UV	C14-C13	2.31	1.46	1.43
8	H	102	1UV	C18-N19	2.65	1.51	1.47
8	H	101	1UV	C18-N19	3.00	1.51	1.47

All (26) bond angle outliers are listed below:

Mol	Chain	Res	Type	Atoms	Z	Observed(°)	Ideal(°)
8	H	102	1UV	C15-C14-C24	-3.79	113.16	121.02
8	H	102	1UV	C20-N19-C18	-3.61	101.53	110.99
8	H	101	1UV	C15-C14-C24	-3.60	113.55	121.02
8	H	101	1UV	C20-N19-C18	-3.59	101.59	110.99
8	H	101	1UV	O16-C17-C18	-3.04	108.74	114.85
8	H	101	1UV	C17-C18-N19	-3.01	108.06	113.24
8	H	102	1UV	O16-C17-C18	-2.88	109.07	114.85
8	H	102	1UV	C17-C18-N19	-2.75	108.52	113.24
8	H	102	1UV	C27-C12-C10	-2.23	117.65	121.46
8	H	102	1UV	C27-C25-C24	-2.07	120.23	123.29
8	H	102	1UV	O16-C15-C14	2.05	116.45	113.24
8	H	101	1UV	O16-C15-C14	2.10	116.52	113.24
8	H	101	1UV	C14-C24-N19	2.32	123.91	119.29
8	H	101	1UV	C25-C27-C12	2.38	121.90	119.75
8	H	101	1UV	C02-N01-C13	2.53	124.09	120.87
8	H	101	1UV	C21-C20-N19	2.58	106.29	104.30
8	H	101	1UV	C10-C12-C13	2.66	121.88	119.91
8	H	102	1UV	C14-C24-N19	2.70	124.67	119.29
8	H	102	1UV	C02-N01-C13	2.84	124.49	120.87
8	H	102	1UV	C25-C27-C12	3.00	122.46	119.75
8	H	102	1UV	C21-C20-N19	3.86	107.28	104.30
8	H	102	1UV	C10-C12-C13	3.88	122.79	119.91
8	H	102	1UV	C20-N19-C24	6.71	139.90	116.40
8	H	101	1UV	C20-N19-C24	6.75	140.07	116.40
8	H	101	1UV	C22-C18-N19	8.79	105.19	100.52

Continued on next page...

Continued from previous page...

Mol	Chain	Res	Type	Atoms	Z	Observed(°)	Ideal(°)
8	H	102	1UV	C22-C18-N19	9.38	105.51	100.52

There are no chirality outliers.

There are no torsion outliers.

There are no ring outliers.

2 monomers are involved in 12 short contacts:

Mol	Chain	Res	Type	Clashes	Symm-Clashes
8	H	101	1UV	6	0
8	H	102	1UV	6	0

5.7 Other polymers [i](#)

There are no such residues in this entry.

5.8 Polymer linkage issues [i](#)

There are no chain breaks in this entry.

6 Fit of model and data [i](#)

6.1 Protein, DNA and RNA chains [i](#)

In the following table, the column labelled ‘#RSRZ> 2’ contains the number (and percentage) of RSRZ outliers, followed by percent RSRZ outliers for the chain as percentile scores relative to all X-ray entries and entries of similar resolution. The OWAB column contains the minimum, median, 95th percentile and maximum values of the occupancy-weighted average B-factor per residue. The column labelled ‘Q< 0.9’ lists the number of (and percentage) of residues with an average occupancy less than 0.9.

Mol	Chain	Analysed	<RSRZ>	#RSRZ>2		OWAB(Å²)	Q<0.9	
1	A	482/496 (97%)	-0.69	0	100	100	53, 73, 110, 153	0
1	B	482/496 (97%)	-0.68	0	100	100	52, 73, 107, 160	0
2	C	208/268 (77%)	-0.43	0	100	100	85, 117, 155, 183	0
2	D	210/268 (78%)	-0.35	2 (0%)	82	75	79, 117, 157, 176	0
3	E	7/7 (100%)	-0.52	0	100	100	79, 82, 111, 143	0
4	F	11/11 (100%)	-0.55	0	100	100	84, 101, 120, 136	0
5	G	7/7 (100%)	-0.14	0	100	100	72, 82, 114, 137	0
6	H	11/11 (100%)	-0.37	0	100	100	81, 96, 112, 137	0
All	All	1418/1564 (90%)	-0.59	2 (0%)	95	96	52, 82, 140, 183	0

All (2) RSRZ outliers are listed below:

Mol	Chain	Res	Type	RSRZ
2	D	556	ALA	2.2
2	D	557	TYR	2.1

6.2 Non-standard residues in protein, DNA, RNA chains [i](#)

There are no non-standard protein/DNA/RNA residues in this entry.

6.3 Carbohydrates [i](#)

There are no carbohydrates in this entry.

6.4 Ligands [i](#)

In the following table, the Atoms column lists the number of modelled atoms in the group and the number defined in the chemical component dictionary. The B-factors column lists the minimum, median, 95th percentile and maximum values of B factors of atoms in the group. The column labelled 'Q< 0.9' lists the number of atoms with occupancy less than 0.9.

Mol	Type	Chain	Res	Atoms	RSCC	RSR	B-factors(Å ²)	Q<0.9
7	MG	B	700	1/1	0.81	0.09	92,92,92,92	0
7	MG	A	501	1/1	0.89	0.07	77,77,77,77	0
8	1UV	H	101	27/27	0.91	0.22	107,130,156,163	0
7	MG	C	701	1/1	0.93	0.71	100,100,100,100	0
8	1UV	H	102	27/27	0.94	0.23	103,128,152,159	0
7	MG	A	502	1/1	0.96	0.42	112,112,112,112	0
7	MG	D	701	1/1	0.97	0.70	73,73,73,73	0
7	MG	G	100	1/1	0.98	0.43	117,117,117,117	0

6.5 Other polymers [i](#)

There are no such residues in this entry.