



# wwPDB X-ray Structure Validation Summary Report ⓘ

Mar 8, 2018 – 09:21 pm GMT

PDB ID : 5KP1  
Title : Crystal Structure of Ketosteroid Isomerase from *Pseudomonas putida* (pKSI)  
bound to Equilenin; D40N, Y16(CI-Y)  
Authors : Wu, Y.; Boxer, S.G.  
Deposited on : 2016-07-01  
Resolution : 1.22 Å(reported)

This is a wwPDB X-ray Structure Validation Summary Report for a publicly released PDB entry.

We welcome your comments at [validation@mail.wwpdb.org](mailto:validation@mail.wwpdb.org)

A user guide is available at

<https://www.wwpdb.org/validation/2017/XrayValidationReportHelp>

with specific help available everywhere you see the ⓘ symbol.

---

The following versions of software and data (see [references ⓘ](#)) were used in the production of this report:

MolProbity : 4.02b-467  
Mogul : 1.7.3 (157068), CSD as539be (2018)  
Xtriage (Phenix) : 1.13  
EDS : trunk30967  
Percentile statistics : 20171227.v01 (using entries in the PDB archive December 27th 2017)  
Refmac : 5.8.0158  
CCP4 : 7.0 (Gargrove)  
Ideal geometry (proteins) : Engh & Huber (2001)  
Ideal geometry (DNA, RNA) : Parkinson et al. (1996)  
Validation Pipeline (wwPDB-VP) : trunk30967

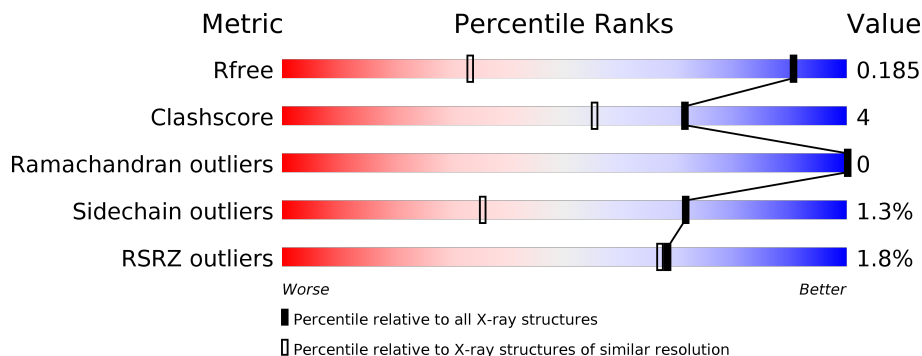
# 1 Overall quality at a glance ⓘ

The following experimental techniques were used to determine the structure:

## *X-RAY DIFFRACTION*

The reported resolution of this entry is 1.22 Å.

Percentile scores (ranging between 0-100) for global validation metrics of the entry are shown in the following graphic. The table shows the number of entries on which the scores are based.



Metric	Whole archive (#Entries)	Similar resolution (#Entries, resolution range(Å))
$R_{free}$	111664	1045 (1.24-1.20)
Clashscore	122126	1100 (1.24-1.20)
Ramachandran outliers	120053	1061 (1.24-1.20)
Sidechain outliers	120020	1060 (1.24-1.20)
RSRZ outliers	108989	1029 (1.24-1.20)

The table below summarises the geometric issues observed across the polymeric chains and their fit to the electron density. The red, orange, yellow and green segments on the lower bar indicate the fraction of residues that contain outliers for  $\geq 3$ , 2, 1 and 0 types of geometric quality criteria. A grey segment represents the fraction of residues that are not modelled. The numeric value for each fraction is indicated below the corresponding segment, with a dot representing fractions  $\leq 5\%$ . The upper red bar (where present) indicates the fraction of residues that have poor fit to the electron density. The numeric value is given above the bar.

Mol	Chain	Length	Quality of chain
1	A	135	<div> <div>3%</div> <div> <div></div> <div>85%</div> <div>7%</div> <div>7%</div> </div> </div>
1	B	135	<div> <div>%</div> <div> <div></div> <div>85%</div> <div>7%</div> <div>7%</div> </div> </div>
1	C	135	<div> <div>%</div> <div> <div></div> <div>83%</div> <div>9%</div> <div>7%</div> </div> </div>
1	D	135	<div> <div>2%</div> <div> <div></div> <div>87%</div> <div>•</div> <div>7%</div> </div> </div>

## 2 Entry composition

There are 4 unique types of molecules in this entry. The entry contains 4706 atoms, of which 0 are hydrogens and 0 are deuteriums.

In the tables below, the ZeroOcc column contains the number of atoms modelled with zero occupancy, the AltConf column contains the number of residues with at least one atom in alternate conformation and the Trace column contains the number of residues modelled with at most 2 atoms.

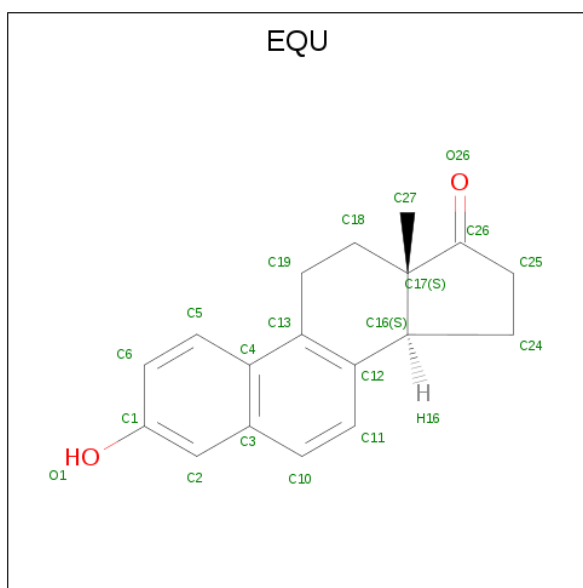
- Molecule 1 is a protein called Steroid Delta-isomerase.

Mol	Chain	Residues	Atoms						ZeroOcc	AltConf	Trace
1	A	125	Total	C	Cl	N	O	S	0	1	0
			968	607	1	171	179	10			
1	B	125	Total	C	Cl	N	O	S	0	3	0
			982	614	1	173	183	11			
1	C	126	Total	C	Cl	N	O	S	0	3	0
			993	620	1	177	184	11			
1	D	125	Total	C	Cl	N	O	S	0	2	0
			974	610	1	172	180	11			

There are 20 discrepancies between the modelled and reference sequences:

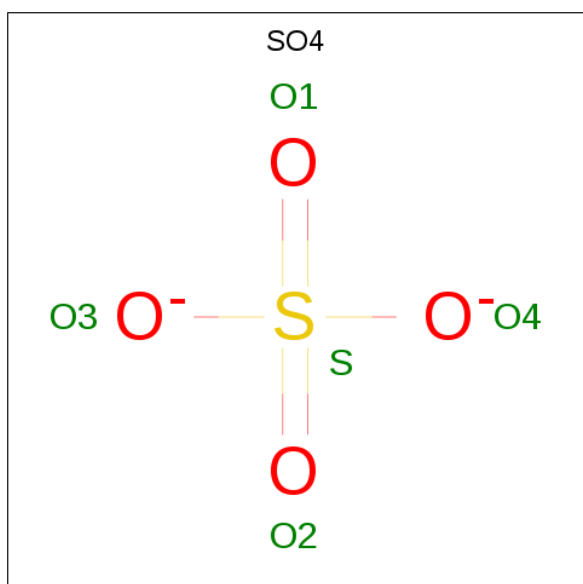
Chain	Residue	Modelled	Actual	Comment	Reference
A	40	ASN	ASP	engineered mutation	UNP P07445
A	132	LEU	-	expression tag	UNP P07445
A	133	VAL	-	expression tag	UNP P07445
A	134	PRO	-	expression tag	UNP P07445
A	135	ARG	-	expression tag	UNP P07445
B	40	ASN	ASP	engineered mutation	UNP P07445
B	132	LEU	-	expression tag	UNP P07445
B	133	VAL	-	expression tag	UNP P07445
B	134	PRO	-	expression tag	UNP P07445
B	135	ARG	-	expression tag	UNP P07445
C	40	ASN	ASP	engineered mutation	UNP P07445
C	132	LEU	-	expression tag	UNP P07445
C	133	VAL	-	expression tag	UNP P07445
C	134	PRO	-	expression tag	UNP P07445
C	135	ARG	-	expression tag	UNP P07445
D	40	ASN	ASP	engineered mutation	UNP P07445
D	132	LEU	-	expression tag	UNP P07445
D	133	VAL	-	expression tag	UNP P07445
D	134	PRO	-	expression tag	UNP P07445
D	135	ARG	-	expression tag	UNP P07445

- Molecule 2 is EQUILENIN (three-letter code: EQU) (formula:  $C_{18}H_{18}O_2$ ).



Mol	Chain	Residues	Atoms			ZeroOcc	AltConf
2	A	1	Total	C	O	0	0
			20	18	2		
2	B	1	Total	C	O	0	0
			20	18	2		
2	C	1	Total	C	O	0	0
			20	18	2		
2	D	1	Total	C	O	0	0
			20	18	2		

- Molecule 3 is SULFATE ION (three-letter code: SO4) (formula:  $O_4S$ ).



Mol	Chain	Residues	Atoms			ZeroOcc	AltConf
3	A	1	Total	O	S	0	0
			5	4	1		
3	D	1	Total	O	S	0	0
			5	4	1		

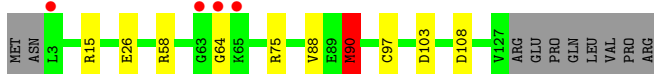
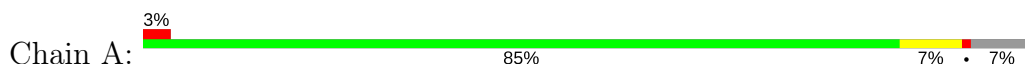
- Molecule 4 is water.

Mol	Chain	Residues	Atoms		ZeroOcc	AltConf
4	A	167	Total	O	0	0
			167	167		
4	B	179	Total	O	0	0
			179	179		
4	C	179	Total	O	0	0
			179	179		
4	D	174	Total	O	0	0
			174	174		

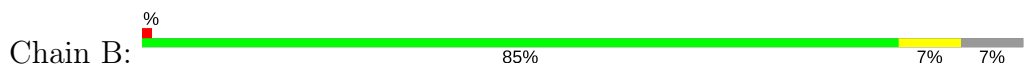
### 3 Residue-property plots [i](#)

These plots are drawn for all protein, RNA and DNA chains in the entry. The first graphic for a chain summarises the proportions of the various outlier classes displayed in the second graphic. The second graphic shows the sequence view annotated by issues in geometry and electron density. Residues are color-coded according to the number of geometric quality criteria for which they contain at least one outlier: green = 0, yellow = 1, orange = 2 and red = 3 or more. A red dot above a residue indicates a poor fit to the electron density ( $RSRZ > 2$ ). Stretches of 2 or more consecutive residues without any outlier are shown as a green connector. Residues present in the sample, but not in the model, are shown in grey.

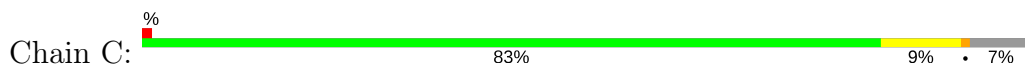
- Molecule 1: Steroid Delta-isomerase



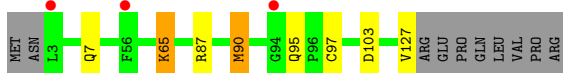
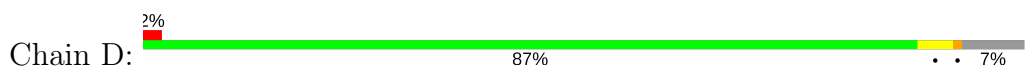
- Molecule 1: Steroid Delta-isomerase



- Molecule 1: Steroid Delta-isomerase



- Molecule 1: Steroid Delta-isomerase



## 4 Data and refinement statistics

Property	Value	Source
Space group	P 1	Depositor
Cell constants a, b, c, $\alpha$ , $\beta$ , $\gamma$	50.42Å 55.59Å 55.57Å 79.73° 89.77° 89.79°	Depositor
Resolution (Å)	24.07 – 1.22 24.07 – 1.22	Depositor EDS
% Data completeness (in resolution range)	89.1 (24.07-1.22) 89.0 (24.07-1.22)	Depositor EDS
$R_{merge}$	0.05	Depositor
$R_{sym}$	(Not available)	Depositor
$\langle I/\sigma(I) \rangle$ <sup>1</sup>	1.74 (at 1.22Å)	Xtriage
Refinement program	PHENIX 1.10.1_2155	Depositor
R, $R_{free}$	0.166 , 0.185 0.166 , 0.185	Depositor DCC
$R_{free}$ test set	7945 reflections (5.02%)	wwPDB-VP
Wilson B-factor (Å <sup>2</sup> )	11.3	Xtriage
Anisotropy	0.392	Xtriage
Bulk solvent $k_{sol}$ (e/Å <sup>3</sup> ), $B_{sol}$ (Å <sup>2</sup> )	0.39 , 43.2	EDS
L-test for twinning <sup>2</sup>	$\langle  L  \rangle = 0.49$ , $\langle L^2 \rangle = 0.33$	Xtriage
Estimated twinning fraction	0.026 for h,-k,-l 0.026 for -h,l,k 0.487 for -h,-l,-k	Xtriage
$F_o, F_c$ correlation	0.97	EDS
Total number of atoms	4706	wwPDB-VP
Average B, all atoms (Å <sup>2</sup> )	17.0	wwPDB-VP

Xtriage's analysis on translational NCS is as follows: *The largest off-origin peak in the Patterson function is 6.79% of the height of the origin peak. No significant pseudotranslation is detected.*

<sup>1</sup>Intensities estimated from amplitudes.

<sup>2</sup>Theoretical values of  $\langle |L| \rangle$ ,  $\langle L^2 \rangle$  for acentric reflections are 0.5, 0.333 respectively for untwinned datasets, and 0.375, 0.2 for perfectly twinned datasets.

## 5 Model quality [i](#)

### 5.1 Standard geometry [i](#)

Bond lengths and bond angles in the following residue types are not validated in this section: 3CT, EQU, SO4

The Z score for a bond length (or angle) is the number of standard deviations the observed value is removed from the expected value. A bond length (or angle) with  $|Z| > 5$  is considered an outlier worth inspection. RMSZ is the root-mean-square of all Z scores of the bond lengths (or angles).

Mol	Chain	Bond lengths		Bond angles	
		RMSZ	$\# Z  > 5$	RMSZ	$\# Z  > 5$
1	A	0.65	0/977	0.86	5/1324 (0.4%)
1	B	0.65	0/991	0.83	1/1343 (0.1%)
1	C	0.67	0/1002	0.82	2/1357 (0.1%)
1	D	0.68	0/983	0.82	2/1332 (0.2%)
All	All	0.66	0/3953	0.83	10/5356 (0.2%)

There are no bond length outliers.

The worst 5 of 10 bond angle outliers are listed below:

Mol	Chain	Res	Type	Atoms	Z	Observed(°)	Ideal(°)
1	A	90	MET	CG-SD-CE	-7.89	87.57	100.20
1	A	103	ASP	CB-CG-OD2	-6.84	112.14	118.30
1	B	103	ASP	CB-CG-OD1	6.01	123.71	118.30
1	C	103	ASP	CB-CG-OD1	6.00	123.70	118.30
1	D	103	ASP	CB-CG-OD2	-5.93	112.96	118.30

There are no chirality outliers.

There are no planarity outliers.

### 5.2 Too-close contacts [i](#)

In the following table, the Non-H and H(model) columns list the number of non-hydrogen atoms and hydrogen atoms in the chain respectively. The H(added) column lists the number of hydrogen atoms added and optimized by MolProbity. The Clashes column lists the number of clashes within the asymmetric unit, whereas Symm-Clashes lists symmetry related clashes.

Mol	Chain	Non-H	H(model)	H(added)	Clashes	Symm-Clashes
1	A	968	0	936	5	0
1	B	982	0	943	8	1

*Continued on next page...*



*Continued from previous page...*

Mol	Chain	Non-H	H(model)	H(added)	Clashes	Symm-Clashes
1	C	993	0	956	13	0
1	D	974	0	940	6	0
2	A	20	0	17	0	0
2	B	20	0	17	0	0
2	C	20	0	17	0	0
2	D	20	0	17	0	0
3	A	5	0	0	0	0
3	D	5	0	0	0	0
4	A	167	0	0	3	3
4	B	179	0	0	4	1
4	C	179	0	0	8	0
4	D	174	0	0	4	3
All	All	4706	0	3843	30	4

The all-atom clashscore is defined as the number of clashes found per 1000 atoms (including hydrogen atoms). The all-atom clashscore for this structure is 4.

The worst 5 of 30 close contacts within the same asymmetric unit are listed below, sorted by their clash magnitude.

Atom-1	Atom-2	Interatomic distance (Å)	Clash overlap (Å)
1:C:10:GLN:OE1	4:C:301:HOH:O	1.95	0.83
1:D:65:LYS:NZ	4:D:301:HOH:O	1.82	0.82
1:D:90:MET:SD	1:D:97[B]:CYS:SG	2.81	0.77
1:D:95:GLN:OE1	4:D:302:HOH:O	2.03	0.76
1:C:65:LYS:HD3	1:C:66:VAL:H	1.55	0.72

All (4) symmetry-related close contacts are listed below. The label for Atom-2 includes the symmetry operator and encoded unit-cell translations to be applied.

Atom-1	Atom-2	Interatomic distance (Å)	Clash overlap (Å)
4:A:378:HOH:O	4:D:348:HOH:O[1_545]	2.15	0.05
4:A:410:HOH:O	4:D:416:HOH:O[1_545]	2.15	0.05
1:B:93:ASN:OD1	4:D:301:HOH:O[1_545]	2.16	0.04
4:A:411:HOH:O	4:B:418:HOH:O[1_455]	2.17	0.03

## 5.3 Torsion angles [i](#)

### 5.3.1 Protein backbone [i](#)

In the following table, the Percentiles column shows the percent Ramachandran outliers of the chain as a percentile score with respect to all X-ray entries followed by that with respect to entries of similar resolution.

The Analysed column shows the number of residues for which the backbone conformation was analysed, and the total number of residues.

Mol	Chain	Analysed	Favoured	Allowed	Outliers	Percentiles	
1	A	123/135 (91%)	119 (97%)	4 (3%)	0	100	100
1	B	125/135 (93%)	123 (98%)	2 (2%)	0	100	100
1	C	126/135 (93%)	124 (98%)	2 (2%)	0	100	100
1	D	124/135 (92%)	122 (98%)	2 (2%)	0	100	100
All	All	498/540 (92%)	488 (98%)	10 (2%)	0	100	100

There are no Ramachandran outliers to report.

### 5.3.2 Protein sidechains [i](#)

In the following table, the Percentiles column shows the percent sidechain outliers of the chain as a percentile score with respect to all X-ray entries followed by that with respect to entries of similar resolution.

The Analysed column shows the number of residues for which the sidechain conformation was analysed, and the total number of residues.

Mol	Chain	Analysed	Rotameric	Outliers	Percentiles	
1	A	100/109 (92%)	99 (99%)	1 (1%)	78	49
1	B	102/109 (94%)	102 (100%)	0	100	100
1	C	103/109 (94%)	101 (98%)	2 (2%)	60	21
1	D	101/109 (93%)	99 (98%)	2 (2%)	58	18
All	All	406/436 (93%)	401 (99%)	5 (1%)	71	38

All (5) residues with a non-rotameric sidechain are listed below:

Mol	Chain	Res	Type
1	A	90	MET
1	C	59	GLN

*Continued on next page...*

*Continued from previous page...*

Mol	Chain	Res	Type
1	C	65	LYS
1	D	65	LYS
1	D	90	MET

Some sidechains can be flipped to improve hydrogen bonding and reduce clashes. All (1) such sidechains are listed below:

Mol	Chain	Res	Type
1	D	30	GLN

### 5.3.3 RNA ⓘ

There are no RNA molecules in this entry.

## 5.4 Non-standard residues in protein, DNA, RNA chains ⓘ

4 non-standard protein/DNA/RNA residues are modelled in this entry.

In the following table, the Counts columns list the number of bonds (or angles) for which Mogul statistics could be retrieved, the number of bonds (or angles) that are observed in the model and the number of bonds (or angles) that are defined in the Chemical Component Dictionary. The Link column lists molecule types, if any, to which the group is linked. The Z score for a bond length (or angle) is the number of standard deviations the observed value is removed from the expected value. A bond length (or angle) with  $|Z| > 2$  is considered an outlier worth inspection. RMSZ is the root-mean-square of all Z scores of the bond lengths (or angles).

Mol	Type	Chain	Res	Link	Bond lengths			Bond angles		
					Counts	RMSZ	$\# Z  > 2$	Counts	RMSZ	$\# Z  > 2$
1	3CT	A	16	1	13,13,14	1.22	2 (15%)	16,17,19	1.09	1 (6%)
1	3CT	B	16	1	13,13,14	1.13	1 (7%)	16,17,19	1.07	1 (6%)
1	3CT	C	16	1	13,13,14	0.74	0	16,17,19	0.76	0
1	3CT	D	16	1	13,13,14	1.28	1 (7%)	16,17,19	1.01	0

In the following table, the Chirals column lists the number of chiral outliers, the number of chiral centers analysed, the number of these observed in the model and the number defined in the Chemical Component Dictionary. Similar counts are reported in the Torsion and Rings columns. '-' means no outliers of that kind were identified.

Mol	Type	Chain	Res	Link	Chirals	Torsions	Rings
1	3CT	A	16	1	-	0/4/6/8	0/1/1/1
1	3CT	B	16	1	-	0/4/6/8	0/1/1/1

*Continued on next page...*

*Continued from previous page...*

Mol	Type	Chain	Res	Link	Chirals	Torsions	Rings
1	3CT	C	16	1	-	0/4/6/8	0/1/1/1
1	3CT	D	16	1	-	0/4/6/8	0/1/1/1

All (4) bond length outliers are listed below:

Mol	Chain	Res	Type	Atoms	Z	Observed(Å)	Ideal(Å)
1	A	16	3CT	CZ-CE2	-2.18	1.37	1.39
1	B	16	3CT	CA-C	2.41	1.53	1.50
1	A	16	3CT	CA-C	3.07	1.54	1.50
1	D	16	3CT	CA-C	3.62	1.55	1.50

All (2) bond angle outliers are listed below:

Mol	Chain	Res	Type	Atoms	Z	Observed(°)	Ideal(°)
1	A	16	3CT	CD2-CE2-CZ	-2.39	119.55	120.95
1	B	16	3CT	CD2-CE2-CZ	-2.16	119.68	120.95

There are no chirality outliers.

There are no torsion outliers.

There are no ring outliers.

No monomer is involved in short contacts.

## 5.5 Carbohydrates [i](#)

There are no carbohydrates in this entry.

## 5.6 Ligand geometry [i](#)

6 ligands are modelled in this entry.

In the following table, the Counts columns list the number of bonds (or angles) for which Mogul statistics could be retrieved, the number of bonds (or angles) that are observed in the model and the number of bonds (or angles) that are defined in the Chemical Component Dictionary. The Link column lists molecule types, if any, to which the group is linked. The Z score for a bond length (or angle) is the number of standard deviations the observed value is removed from the expected value. A bond length (or angle) with  $|Z| > 2$  is considered an outlier worth inspection. RMSZ is the root-mean-square of all Z scores of the bond lengths (or angles).

Mol	Type	Chain	Res	Link	Bond lengths			Bond angles		
					Counts	RMSZ	# Z  > 2	Counts	RMSZ	# Z  > 2
2	EQU	A	201	-	23,23,23	0.85	1 (4%)	29,36,36	0.94	1 (3%)
3	SO4	A	202	-	4,4,4	0.30	0	6,6,6	0.22	0
2	EQU	B	200	-	23,23,23	0.86	0	29,36,36	0.87	0
2	EQU	C	200	-	23,23,23	0.82	0	29,36,36	0.76	0
2	EQU	D	201	-	23,23,23	0.87	1 (4%)	29,36,36	0.91	1 (3%)
3	SO4	D	202	-	4,4,4	0.34	0	6,6,6	0.39	0

In the following table, the Chirals column lists the number of chiral outliers, the number of chiral centers analysed, the number of these observed in the model and the number defined in the Chemical Component Dictionary. Similar counts are reported in the Torsion and Rings columns. '-' means no outliers of that kind were identified.

Mol	Type	Chain	Res	Link	Chirals	Torsions	Rings
2	EQU	A	201	-	-	0/0/27/27	0/4/4/4
3	SO4	A	202	-	-	0/0/0/0	0/0/0/0
2	EQU	B	200	-	-	0/0/27/27	0/4/4/4
2	EQU	C	200	-	-	0/0/27/27	0/4/4/4
2	EQU	D	201	-	-	0/0/27/27	0/4/4/4
3	SO4	D	202	-	-	0/0/0/0	0/0/0/0

All (2) bond length outliers are listed below:

Mol	Chain	Res	Type	Atoms	Z	Observed(Å)	Ideal(Å)
2	D	201	EQU	C11-C12	2.16	1.42	1.39
2	A	201	EQU	C11-C12	2.23	1.42	1.39

All (2) bond angle outliers are listed below:

Mol	Chain	Res	Type	Atoms	Z	Observed(°)	Ideal(°)
2	A	201	EQU	C18-C19-C13	2.12	115.74	111.87
2	D	201	EQU	C27-C17-C16	2.39	116.40	112.05

There are no chirality outliers.

There are no torsion outliers.

There are no ring outliers.

No monomer is involved in short contacts.

## 5.7 Other polymers [i](#)

There are no such residues in this entry.

## 5.8 Polymer linkage issues [i](#)

There are no chain breaks in this entry.

## 6 Fit of model and data [i](#)

### 6.1 Protein, DNA and RNA chains [i](#)

In the following table, the column labelled ‘#RSRZ> 2’ contains the number (and percentage) of RSRZ outliers, followed by percent RSRZ outliers for the chain as percentile scores relative to all X-ray entries and entries of similar resolution. The OWAB column contains the minimum, median, 95<sup>th</sup> percentile and maximum values of the occupancy-weighted average B-factor per residue. The column labelled ‘Q< 0.9’ lists the number of (and percentage) of residues with an average occupancy less than 0.9.

Mol	Chain	Analysed	<RSRZ>	#RSRZ>2	OWAB(Å <sup>2</sup> )	Q<0.9
1	A	124/135 (91%)	-0.11	4 (3%) 47 44	8, 12, 33, 57	0
1	B	124/135 (91%)	-0.17	1 (0%) 86 85	8, 12, 26, 40	0
1	C	125/135 (92%)	-0.12	1 (0%) 86 85	8, 13, 26, 44	0
1	D	124/135 (91%)	-0.12	3 (2%) 59 55	8, 12, 30, 46	0
All	All	497/540 (92%)	-0.13	9 (1%) 68 67	8, 13, 30, 57	0

The worst 5 of 9 RSRZ outliers are listed below:

Mol	Chain	Res	Type	RSRZ
1	A	65	LYS	3.9
1	C	64	GLY	3.6
1	A	63	GLY	2.8
1	B	64	GLY	2.6
1	D	56	PHE	2.6

### 6.2 Non-standard residues in protein, DNA, RNA chains [i](#)

In the following table, the Atoms column lists the number of modelled atoms in the group and the number defined in the chemical component dictionary. The B-factors column lists the minimum, median, 95<sup>th</sup> percentile and maximum values of B factors of atoms in the group. The column labelled ‘Q< 0.9’ lists the number of atoms with occupancy less than 0.9.

Mol	Type	Chain	Res	Atoms	RSCC	RSR	B-factors(Å <sup>2</sup> )	Q<0.9
1	3CT	C	16	13/14	0.99	0.06	7,9,9,9	0
1	3CT	A	16	13/14	0.99	0.06	9,10,10,10	0
1	3CT	D	16	13/14	0.99	0.06	9,9,10,10	0
1	3CT	B	16	13/14	0.99	0.06	7,9,9,10	0

### 6.3 Carbohydrates [i](#)

There are no carbohydrates in this entry.

### 6.4 Ligands [i](#)

In the following table, the Atoms column lists the number of modelled atoms in the group and the number defined in the chemical component dictionary. The B-factors column lists the minimum, median, 95<sup>th</sup> percentile and maximum values of B factors of atoms in the group. The column labelled 'Q< 0.9' lists the number of atoms with occupancy less than 0.9.

Mol	Type	Chain	Res	Atoms	RSCC	RSR	B-factors( $\text{\AA}^2$ )	Q<0.9
3	SO4	D	202	5/5	0.94	0.17	16,41,54,57	0
2	EQU	B	200	20/20	0.95	0.08	9,12,20,22	0
3	SO4	A	202	5/5	0.96	0.16	16,43,55,59	0
2	EQU	C	200	20/20	0.96	0.08	8,13,19,24	0
2	EQU	A	201	20/20	0.96	0.07	9,12,17,19	0
2	EQU	D	201	20/20	0.97	0.07	9,12,17,19	0

### 6.5 Other polymers [i](#)

There are no such residues in this entry.