



wwPDB X-ray Structure Validation Summary Report ⓘ

Mar 9, 2018 – 05:07 am GMT

PDB ID : 1L2J
Title : Human Estrogen Receptor beta Ligand-binding Domain in Complex with (R,R)-5,11-cis-diethyl-5,6,11,12-tetrahydrochrysene-2,8-diol
Authors : Shiau, A.K.; Barstad, D.; Radek, J.T.; Meyers, M.J.; Nettles, K.W.; Katzenellenbogen, B.S.; Katzenellenbogen, J.A.; Agard, D.A.; Greene, G.L.
Deposited on : 2002-02-21
Resolution : 2.95 Å(reported)

This is a wwPDB X-ray Structure Validation Summary Report for a publicly released PDB entry.

We welcome your comments at validation@mail.wwpdb.org

A user guide is available at

<https://www.wwpdb.org/validation/2017/XrayValidationReportHelp>

with specific help available everywhere you see the ⓘ symbol.

The following versions of software and data (see [references ⓘ](#)) were used in the production of this report:

MolProbity : 4.02b-467
Mogul : 1.7.3 (157068), CSD as539be (2018)
Xtriage (Phenix) : 1.13
EDS : trunk30967
Percentile statistics : 20171227.v01 (using entries in the PDB archive December 27th 2017)
Refmac : 5.8.0158
CCP4 : 7.0 (Gargrove)
Ideal geometry (proteins) : Engh & Huber (2001)
Ideal geometry (DNA, RNA) : Parkinson et al. (1996)
Validation Pipeline (wwPDB-VP) : trunk30967

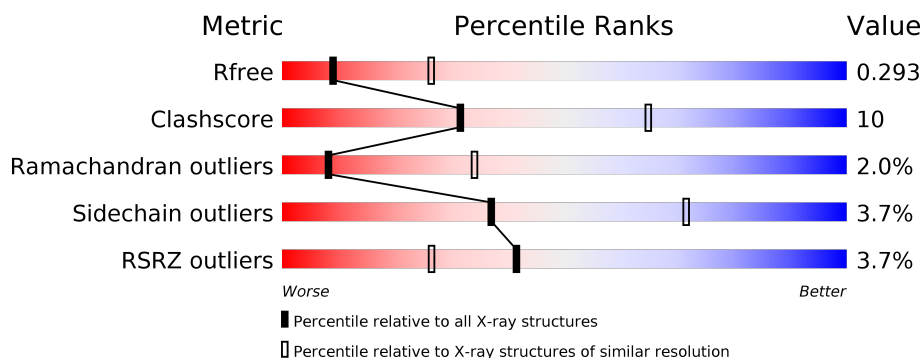
1 Overall quality at a glance ⓘ

The following experimental techniques were used to determine the structure:

X-RAY DIFFRACTION

The reported resolution of this entry is 2.95 Å.

Percentile scores (ranging between 0-100) for global validation metrics of the entry are shown in the following graphic. The table shows the number of entries on which the scores are based.



Metric	Whole archive (#Entries)	Similar resolution (#Entries, resolution range(Å))
R_{free}	111664	2641 (3.00-2.92)
Clashscore	122126	2988 (3.00-2.92)
Ramachandran outliers	120053	2892 (3.00-2.92)
Sidechain outliers	120020	2895 (3.00-2.92)
RSRZ outliers	108989	2527 (3.00-2.92)

The table below summarises the geometric issues observed across the polymeric chains and their fit to the electron density. The red, orange, yellow and green segments on the lower bar indicate the fraction of residues that contain outliers for ≥ 3 , 2, 1 and 0 types of geometric quality criteria. A grey segment represents the fraction of residues that are not modelled. The numeric value for each fraction is indicated below the corresponding segment, with a dot representing fractions $\leq 5\%$. The upper red bar (where present) indicates the fraction of residues that have poor fit to the electron density. The numeric value is given above the bar.

Mol	Chain	Length	Quality of chain
1	A	271	<div> <div>2%</div> <div> <div></div> <div>64%</div> <div>18%</div> <div>•</div> <div>14%</div> </div> </div>
1	B	271	<div> <div>4%</div> <div> <div></div> <div>63%</div> <div>18%</div> <div>•</div> <div>18%</div> </div> </div>

2 Entry composition

There are 3 unique types of molecules in this entry. The entry contains 3459 atoms, of which 0 are hydrogens and 0 are deuteriums.

In the tables below, the ZeroOcc column contains the number of atoms modelled with zero occupancy, the AltConf column contains the number of residues with at least one atom in alternate conformation and the Trace column contains the number of residues modelled with at most 2 atoms.

- Molecule 1 is a protein called ESTROGEN RECEPTOR BETA.

Mol	Chain	Residues	Atoms					ZeroOcc	AltConf	Trace
1	A	232	Total	C	N	O	S	0	0	0
			1741	1119	296	309	17			
1	B	223	Total	C	N	O	S	0	0	0
			1661	1069	281	295	16			

There are 42 discrepancies between the modelled and reference sequences:

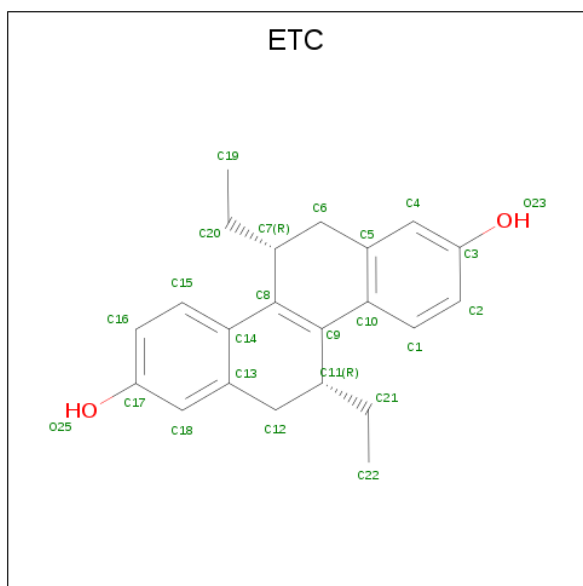
Chain	Residue	Modelled	Actual	Comment	Reference
A	235	MET	-	EXPRESSION TAG	UNP Q92731
A	236	GLY	-	EXPRESSION TAG	UNP Q92731
A	237	SER	-	EXPRESSION TAG	UNP Q92731
A	238	SER	-	EXPRESSION TAG	UNP Q92731
A	239	HIS	-	EXPRESSION TAG	UNP Q92731
A	240	HIS	-	EXPRESSION TAG	UNP Q92731
A	241	HIS	-	EXPRESSION TAG	UNP Q92731
A	242	HIS	-	EXPRESSION TAG	UNP Q92731
A	243	HIS	-	EXPRESSION TAG	UNP Q92731
A	244	HIS	-	EXPRESSION TAG	UNP Q92731
A	245	SER	-	EXPRESSION TAG	UNP Q92731
A	246	SER	-	EXPRESSION TAG	UNP Q92731
A	247	GLY	-	EXPRESSION TAG	UNP Q92731
A	248	LEU	-	EXPRESSION TAG	UNP Q92731
A	249	VAL	-	EXPRESSION TAG	UNP Q92731
A	250	PRO	-	EXPRESSION TAG	UNP Q92731
A	251	ARG	-	EXPRESSION TAG	UNP Q92731
A	252	GLY	-	EXPRESSION TAG	UNP Q92731
A	253	SER	-	EXPRESSION TAG	UNP Q92731
A	254	HIS	-	EXPRESSION TAG	UNP Q92731
A	255	MET	-	EXPRESSION TAG	UNP Q92731
B	235	MET	-	EXPRESSION TAG	UNP Q92731
B	236	GLY	-	EXPRESSION TAG	UNP Q92731
B	237	SER	-	EXPRESSION TAG	UNP Q92731
B	238	SER	-	EXPRESSION TAG	UNP Q92731

Continued on next page...

Continued from previous page...

Chain	Residue	Modelled	Actual	Comment	Reference
B	239	HIS	-	EXPRESSION TAG	UNP Q92731
B	240	HIS	-	EXPRESSION TAG	UNP Q92731
B	241	HIS	-	EXPRESSION TAG	UNP Q92731
B	242	HIS	-	EXPRESSION TAG	UNP Q92731
B	243	HIS	-	EXPRESSION TAG	UNP Q92731
B	244	HIS	-	EXPRESSION TAG	UNP Q92731
B	245	SER	-	EXPRESSION TAG	UNP Q92731
B	246	SER	-	EXPRESSION TAG	UNP Q92731
B	247	GLY	-	EXPRESSION TAG	UNP Q92731
B	248	LEU	-	EXPRESSION TAG	UNP Q92731
B	249	VAL	-	EXPRESSION TAG	UNP Q92731
B	250	PRO	-	EXPRESSION TAG	UNP Q92731
B	251	ARG	-	EXPRESSION TAG	UNP Q92731
B	252	GLY	-	EXPRESSION TAG	UNP Q92731
B	253	SER	-	EXPRESSION TAG	UNP Q92731
B	254	HIS	-	EXPRESSION TAG	UNP Q92731
B	255	MET	-	EXPRESSION TAG	UNP Q92731

- Molecule 2 is (R,R)-5,11-CIS-DIETHYL-5,6,11,12-TETRAHYDROCHRYSENE-2,8-DIOL (three-letter code: ETC) (formula: C₂₂H₂₄O₂).



Mol	Chain	Residues	Atoms			ZeroOcc	AltConf
2	A	1	Total	C	O	0	0
			24	22	2		
2	B	1	Total	C	O	0	0
			24	22	2		

- Molecule 3 is water.

Mol	Chain	Residues	Atoms		ZeroOcc	AltConf
3	A	7	Total 7	O 7	0	0
3	B	2	Total 2	O 2	0	0

4 Data and refinement statistics

Property	Value	Source
Space group	H 3	Depositor
Cell constants a, b, c, α , β , γ	99.14Å 99.14Å 193.38Å 90.00° 90.00° 120.00°	Depositor
Resolution (Å)	49.60 – 2.95 49.57 – 2.95	Depositor EDS
% Data completeness (in resolution range)	99.6 (49.60-2.95) 99.7 (49.57-2.95)	Depositor EDS
R_{merge}	(Not available)	Depositor
R_{sym}	0.04	Depositor
$\langle I/\sigma(I) \rangle$ ¹	2.30 (at 2.96Å)	Xtriage
Refinement program	CNS 1.0	Depositor
R, R_{free}	0.259 , 0.299 0.257 , 0.293	Depositor DCC
R_{free} test set	741 reflections (4.98%)	wwPDB-VP
Wilson B-factor (Å ²)	38.9	Xtriage
Anisotropy	0.200	Xtriage
Bulk solvent k_{sol} (e/Å ³), B_{sol} (Å ²)	0.33 , 56.6	EDS
L-test for twinning ²	$\langle L \rangle = 0.51$, $\langle L^2 \rangle = 0.34$	Xtriage
Estimated twinning fraction	0.029 for h,-h-k,-l	Xtriage
F_o, F_c correlation	0.87	EDS
Total number of atoms	3459	wwPDB-VP
Average B, all atoms (Å ²)	40.0	wwPDB-VP

Xtriage's analysis on translational NCS is as follows: *The largest off-origin peak in the Patterson function is 4.00% of the height of the origin peak. No significant pseudotranslation is detected.*

¹Intensities estimated from amplitudes.

²Theoretical values of $\langle |L| \rangle$, $\langle L^2 \rangle$ for acentric reflections are 0.5, 0.333 respectively for untwinned datasets, and 0.375, 0.2 for perfectly twinned datasets.

5 Model quality

5.1 Standard geometry

Bond lengths and bond angles in the following residue types are not validated in this section: ETC

The Z score for a bond length (or angle) is the number of standard deviations the observed value is removed from the expected value. A bond length (or angle) with $|Z| > 5$ is considered an outlier worth inspection. RMSZ is the root-mean-square of all Z scores of the bond lengths (or angles).

Mol	Chain	Bond lengths		Bond angles	
		RMSZ	$\# Z > 5$	RMSZ	$\# Z > 5$
1	A	0.49	0/1767	0.62	0/2394
1	B	0.49	0/1686	0.61	0/2287
All	All	0.49	0/3453	0.61	0/4681

There are no bond length outliers.

There are no bond angle outliers.

There are no chirality outliers.

There are no planarity outliers.

5.2 Too-close contacts

In the following table, the Non-H and H(model) columns list the number of non-hydrogen atoms and hydrogen atoms in the chain respectively. The H(added) column lists the number of hydrogen atoms added and optimized by MolProbity. The Clashes column lists the number of clashes within the asymmetric unit, whereas Symm-Clashes lists symmetry related clashes.

Mol	Chain	Non-H	H(model)	H(added)	Clashes	Symm-Clashes
1	A	1741	0	1754	37	0
1	B	1661	0	1651	30	0
2	A	24	0	23	2	0
2	B	24	0	24	2	0
3	A	7	0	0	0	0
3	B	2	0	0	0	0
All	All	3459	0	3452	67	0

The all-atom clashscore is defined as the number of clashes found per 1000 atoms (including hydrogen atoms). The all-atom clashscore for this structure is 10.

The worst 5 of 67 close contacts within the same asymmetric unit are listed below, sorted by their

clash magnitude.

Atom-1	Atom-2	Interatomic distance (Å)	Clash overlap (Å)
1:A:347:SER:HB3	1:A:355:ILE:H	1.43	0.84
1:B:347:SER:HB3	1:B:355:ILE:H	1.44	0.81
1:B:487:VAL:HA	1:B:490:LEU:HD12	1.63	0.80
1:A:487:VAL:HA	1:A:490:LEU:HD12	1.67	0.74
1:A:482:LYS:HD2	1:A:483:ASN:H	1.54	0.72

There are no symmetry-related clashes.

5.3 Torsion angles [i](#)

5.3.1 Protein backbone [i](#)

In the following table, the Percentiles column shows the percent Ramachandran outliers of the chain as a percentile score with respect to all X-ray entries followed by that with respect to entries of similar resolution.

The Analysed column shows the number of residues for which the backbone conformation was analysed, and the total number of residues.

Mol	Chain	Analysed	Favoured	Allowed	Outliers	Percentiles	
1	A	226/271 (83%)	201 (89%)	20 (9%)	5 (2%)	7	31
1	B	215/271 (79%)	198 (92%)	13 (6%)	4 (2%)	9	36
All	All	441/542 (81%)	399 (90%)	33 (8%)	9 (2%)	8	34

5 of 9 Ramachandran outliers are listed below:

Mol	Chain	Res	Type
1	A	478	ASN
1	B	408	SER
1	B	295	MET
1	B	351	PRO
1	B	446	ILE

5.3.2 Protein sidechains [i](#)

In the following table, the Percentiles column shows the percent sidechain outliers of the chain as a percentile score with respect to all X-ray entries followed by that with respect to entries of similar resolution.

The Analysed column shows the number of residues for which the sidechain conformation was analysed, and the total number of residues.

Mol	Chain	Analysed	Rotameric	Outliers	Percentiles	
1	A	183/242 (76%)	174 (95%)	9 (5%)	27	63
1	B	172/242 (71%)	168 (98%)	4 (2%)	53	82
All	All	355/484 (73%)	342 (96%)	13 (4%)	37	71

5 of 13 residues with a non-rotameric sidechain are listed below:

Mol	Chain	Res	Type
1	A	390	LEU
1	A	407	ASN
1	B	390	LEU
1	A	380	LEU
1	B	380	LEU

Some sidechains can be flipped to improve hydrogen bonding and reduce clashes. 5 of 6 such sidechains are listed below:

Mol	Chain	Res	Type
1	A	496	ASN
1	B	496	ASN
1	B	407	ASN
1	A	431	ASN
1	B	431	ASN

5.3.3 RNA ⓘ

There are no RNA molecules in this entry.

5.4 Non-standard residues in protein, DNA, RNA chains ⓘ

There are no non-standard protein/DNA/RNA residues in this entry.

5.5 Carbohydrates ⓘ

There are no carbohydrates in this entry.

5.6 Ligand geometry

2 ligands are modelled in this entry.

In the following table, the Counts columns list the number of bonds (or angles) for which Mogul statistics could be retrieved, the number of bonds (or angles) that are observed in the model and the number of bonds (or angles) that are defined in the Chemical Component Dictionary. The Link column lists molecule types, if any, to which the group is linked. The Z score for a bond length (or angle) is the number of standard deviations the observed value is removed from the expected value. A bond length (or angle) with $|Z| > 2$ is considered an outlier worth inspection. RMSZ is the root-mean-square of all Z scores of the bond lengths (or angles).

Mol	Type	Chain	Res	Link	Bond lengths			Bond angles		
					Counts	RMSZ	# $ Z > 2$	Counts	RMSZ	# $ Z > 2$
2	ETC	A	600	-	27,27,27	1.08	2 (7%)	28,40,40	0.95	2 (7%)
2	ETC	B	800	-	27,27,27	1.22	3 (11%)	28,40,40	0.98	1 (3%)

In the following table, the Chirals column lists the number of chiral outliers, the number of chiral centers analysed, the number of these observed in the model and the number defined in the Chemical Component Dictionary. Similar counts are reported in the Torsion and Rings columns. '-' means no outliers of that kind were identified.

Mol	Type	Chain	Res	Link	Chirals	Torsions	Rings
2	ETC	A	600	-	-	0/4/32/32	0/4/4/4
2	ETC	B	800	-	-	0/4/32/32	0/4/4/4

All (5) bond length outliers are listed below:

Mol	Chain	Res	Type	Atoms	Z	Observed(Å)	Ideal(Å)
2	B	800	ETC	C11-C9	-2.60	1.48	1.51
2	A	600	ETC	C11-C9	-2.58	1.48	1.51
2	A	600	ETC	C15-C14	2.32	1.43	1.39
2	B	800	ETC	C15-C14	2.40	1.43	1.39
2	B	800	ETC	C10-C5	2.52	1.43	1.40

All (3) bond angle outliers are listed below:

Mol	Chain	Res	Type	Atoms	Z	Observed(°)	Ideal(°)
2	A	600	ETC	C16-C17-C18	2.06	122.51	120.19
2	A	600	ETC	C2-C3-C4	2.07	122.52	120.19
2	B	800	ETC	C2-C3-C4	2.20	122.67	120.19

There are no chirality outliers.

There are no torsion outliers.

There are no ring outliers.

2 monomers are involved in 4 short contacts:

Mol	Chain	Res	Type	Clashes	Symm-Clashes
2	A	600	ETC	2	0
2	B	800	ETC	2	0

5.7 Other polymers [i](#)

There are no such residues in this entry.

5.8 Polymer linkage issues [i](#)

There are no chain breaks in this entry.

6 Fit of model and data [i](#)

6.1 Protein, DNA and RNA chains [i](#)

In the following table, the column labelled ‘#RSRZ> 2’ contains the number (and percentage) of RSRZ outliers, followed by percent RSRZ outliers for the chain as percentile scores relative to all X-ray entries and entries of similar resolution. The OWAB column contains the minimum, median, 95th percentile and maximum values of the occupancy-weighted average B-factor per residue. The column labelled ‘Q< 0.9’ lists the number of (and percentage) of residues with an average occupancy less than 0.9.

Mol	Chain	Analysed	<RSRZ>	#RSRZ>2	OWAB(Å ²)	Q<0.9
1	A	232/271 (85%)	0.12	5 (2%) 62 43	10, 39, 74, 94	0
1	B	223/271 (82%)	0.31	12 (5%) 26 15	10, 41, 79, 97	0
All	All	455/542 (83%)	0.22	17 (3%) 41 26	10, 40, 78, 97	0

The worst 5 of 17 RSRZ outliers are listed below:

Mol	Chain	Res	Type	RSRZ
1	B	370	VAL	5.5
1	B	369	CYS	5.2
1	B	485	VAL	3.7
1	B	360	LEU	3.3
1	A	264	SER	2.9

6.2 Non-standard residues in protein, DNA, RNA chains [i](#)

There are no non-standard protein/DNA/RNA residues in this entry.

6.3 Carbohydrates [i](#)

There are no carbohydrates in this entry.

6.4 Ligands [i](#)

In the following table, the Atoms column lists the number of modelled atoms in the group and the number defined in the chemical component dictionary. The B-factors column lists the minimum, median, 95th percentile and maximum values of B factors of atoms in the group. The column labelled ‘Q< 0.9’ lists the number of atoms with occupancy less than 0.9.

Mol	Type	Chain	Res	Atoms	RSCC	RSR	B-factors(\AA^2)	Q<0.9
2	ETC	B	800	24/24	0.93	0.21	27,30,33,37	0
2	ETC	A	600	24/24	0.94	0.21	17,21,28,33	0

6.5 Other polymers [i](#)

There are no such residues in this entry.