



wwPDB X-ray Structure Validation Summary Report ⓘ

Mar 9, 2018 – 07:01 am GMT

PDB ID : 4L7Y
Title : Deoxygenated Hb in complex with the allosteric effectors, IRL2500 and 2,3-DPG
Authors : Safo, M.K.; Chowdhury, N.
Deposited on : 2013-06-14
Resolution : 1.80 Å(reported)

This is a wwPDB X-ray Structure Validation Summary Report for a publicly released PDB entry.

We welcome your comments at validation@mail.wwpdb.org

A user guide is available at

<https://www.wwpdb.org/validation/2017/XrayValidationReportHelp>

with specific help available everywhere you see the ⓘ symbol.

The following versions of software and data (see [references ⓘ](#)) were used in the production of this report:

MolProbity : 4.02b-467
Mogul : 1.7.3 (157068), CSD as539be (2018)
Xtriage (Phenix) : 1.13
EDS : trunk30967
Percentile statistics : 20171227.v01 (using entries in the PDB archive December 27th 2017)
Refmac : 5.8.0158
CCP4 : 7.0 (Gargrove)
Ideal geometry (proteins) : Engh & Huber (2001)
Ideal geometry (DNA, RNA) : Parkinson et al. (1996)
Validation Pipeline (wwPDB-VP) : trunk30967

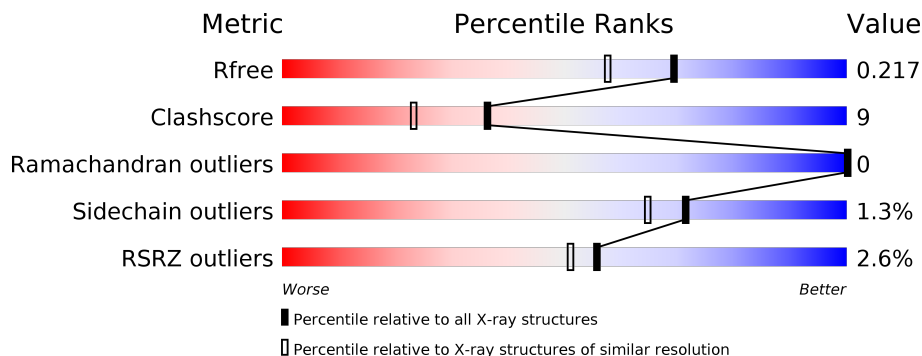
1 Overall quality at a glance ⓘ

The following experimental techniques were used to determine the structure:

X-RAY DIFFRACTION

The reported resolution of this entry is 1.80 Å.

Percentile scores (ranging between 0-100) for global validation metrics of the entry are shown in the following graphic. The table shows the number of entries on which the scores are based.



Metric	Whole archive (#Entries)	Similar resolution (#Entries, resolution range(Å))
R_{free}	111664	5253 (1.80-1.80)
Clashscore	122126	6077 (1.80-1.80)
Ramachandran outliers	120053	6011 (1.80-1.80)
Sidechain outliers	120020	6010 (1.80-1.80)
RSRZ outliers	108989	5157 (1.80-1.80)

The table below summarises the geometric issues observed across the polymeric chains and their fit to the electron density. The red, orange, yellow and green segments on the lower bar indicate the fraction of residues that contain outliers for ≥ 3 , 2, 1 and 0 types of geometric quality criteria. A grey segment represents the fraction of residues that are not modelled. The numeric value for each fraction is indicated below the corresponding segment, with a dot representing fractions $\leq 5\%$. The upper red bar (where present) indicates the fraction of residues that have poor fit to the electron density. The numeric value is given above the bar.

Mol	Chain	Length	Quality of chain
1	A	141	<div> <div>2%</div> <div>92%</div> <div>8%</div> </div>
1	C	141	<div> <div>85%</div> <div>14%</div> <div>•</div> </div>
2	B	146	<div> <div>6%</div> <div>84%</div> <div>14%</div> <div>••</div> </div>
2	D	146	<div> <div>2%</div> <div>88%</div> <div>12%</div> <div>•</div> </div>

In the tables below, the ZeroOcc column contains the number of atoms modelled with zero occupancy, the AltConf column contains the number of residues with at least one atom in alternate conformation and the Trace column contains the number of residues modelled with at most 2 atoms.

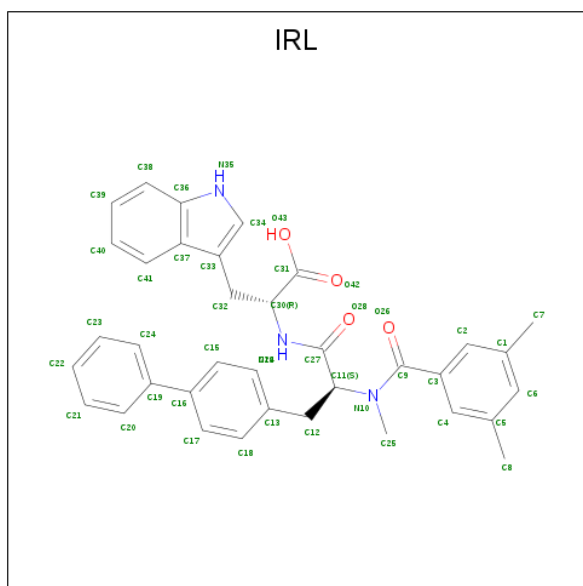
- Molecule 2 is a protein called Hemoglobin subunit beta.

Mol	Chain	Residues	Atoms					ZeroOcc	AltConf	Trace
2	B	145	Total 1116	C 719	N 194	O 200	S 3	0	0	0
2	D	145	Total 1116	C 719	N 194	O 200	S 3	0	0	0

- # MHO
-
- The diagram illustrates the molecular structure of MHO, a complex iron-based compound. The central iron atom (Fe) is coordinated by four nitrogen atoms (N1, N2, N3, N4) in a porphyrin-like ring. The structure is highly symmetrical, with various substituents labeled with atom names (e.g., C1A, C2A, C3A, C4A, C1B, C2B, C3B, C4B, C1C, C2C, C3C, C4C, C1D, C2D, C3D, C4D, C1E, C2E, C3E, C4E, C1F, C2F, C3F, C4F, C1G, C2G, C3G, C4G, C1H, C2H, C3H, C4H, C1I, C2I, C3I, C4I, C1J, C2J, C3J, C4J, C1K, C2K, C3K, C4K, C1L, C2L, C3L, C4L, C1M, C2M, C3M, C4M, C1N, C2N, C3N, C4N, C1O, C2O, C3O, C4O, C1P, C2P, C3P, C4P, C1Q, C2Q, C3Q, C4Q, C1R, C2R, C3R, C4R, C1S, C2S, C3S, C4S, C1T, C2T, C3T, C4T, C1U, C2U, C3U, C4U, C1V, C2V, C3V, C4V, C1W, C2W, C3W, C4W, C1X, C2X, C3X, C4X, C1Y, C2Y, C3Y, C4Y, C1Z, C2Z, C3Z, C4Z, C1AA, C2AA, C3AA, C4AA, C1AB, C2AB, C3AB, C4AB, C1AC, C2AC, C3AC, C4AC, C1AD, C2AD, C3AD, C4AD, C1AE, C2AE, C3AE, C4AE, C1AF, C2AF, C3AF, C4AF, C1AG, C2AG, C3AG, C4AG, C1AH, C2AH, C3AH, C4AH, C1AI, C2AI, C3AI, C4AI, C1AJ, C2AJ, C3AJ, C4AJ, C1AK, C2AK, C3AK, C4AK, C1AL, C2AL, C3AL, C4AL, C1AM, C2AM, C3AM, C4AM, C1AN, C2AN, C3AN, C4AN, C1AO, C2AO, C3AO, C4AO, C1AP, C2AP, C3AP, C4AP, C1AQ, C2AQ, C3AQ, C4AQ, C1AR, C2AR, C3AR, C4AR, C1AS, C2AS, C3AS, C4AS, C1AT, C2AT, C3AT, C4AT, C1AU, C2AU, C3AU, C4AU, C1AV, C2AV, C3AV, C4AV, C1AW, C2AW, C3AW, C4AW, C1AX, C2AX, C3AX, C4AX, C1AY, C2AY, C3AY, C4AY, C1AZ, C2AZ, C3AZ, C4AZ, C1BA, C2BA, C3BA, C4BA, C1BB, C2BB, C3BB, C4BB, C1BC, C2BC, C3BC, C4BC, C1BD, C2BD, C3BD, C4BD, C1BE, C2BE, C3BE, C4BE, C1BF, C2BF, C3BF, C4BF, C1BG, C2BG, C3BG, C4BG, C1BH, C2BH, C3BH, C4BH, C1BI, C2BI, C3BI, C4BI, C1BJ, C2BJ, C3BJ, C4BJ, C1BK, C2BK, C3BK, C4BK, C1BL, C2BL, C3BL, C4BL, C1BM, C2BM, C3BM, C4BM, C1BN, C2BN, C3BN, C4BN, C1BO, C2BO, C3BO, C4BO, C1BP, C2BP, C3BP, C4BP, C1BQ, C2BQ, C3BQ, C4BQ, C1BR, C2BR, C3BR, C4BR, C1BS, C2BS, C3BS, C4BS, C1BT, C2BT, C3BT, C4BT, C1BU, C2BU, C3BU, C4BU, C1BV, C2BV, C3BV, C4BV, C1BW, C2BW, C3BW, C4BW, C1BX, C2BX, C3BX, C4BX, C1BY, C2BY, C3BY, C4BY, C1BZ, C2BZ, C3BZ, C4BZ, C1CA, C2CA, C3CA, C4CA, C1CB, C2CB, C3CB, C4CB, C1CC, C2CC, C3CC, C4CC, C1CD, C2CD, C3CD, C4CD, C1CE, C2CE, C3CE, C4CE, C1CF, C2CF, C3CF, C4CF, C1CG, C2CG, C3CG, C4CG, C1CH, C2CH, C3CH, C4CH, C1CI, C2CI, C3CI, C4CI, C1CJ, C2CJ, C3CJ, C4CJ, C1CK, C2CK, C3CK, C4CK, C1CL, C2CL, C3CL, C4CL, C1CM, C2CM, C3CM, C4CM, C1CN, C2CN, C3CN, C4CN, C1CO, C2CO, C3CO, C4CO, C1CP, C2CP, C3CP, C4CP, C1CQ, C2CQ, C3CQ, C4CQ, C1CR, C2CR, C3CR, C4CR, C1CS, C2CS, C3CS, C4CS, C1CT, C2CT, C3CT, C4CT, C1CU, C2CU, C3CU, C4CU, C1CV, C2CV, C3CV, C4CV, C1CW, C2CW, C3CW, C4CW, C1CX, C2CX, C3CX, C4CX, C1CY, C2CY, C3CY, C4CY, C1CZ, C2CZ, C3CZ, C4CZ, C1DA, C2DA, C3DA, C4DA, C1DB, C2DB, C3DB, C4DB, C1DC, C2DC, C3DC, C4DC, C1DD, C2DD, C3DD, C4DD, C1DE, C2DE, C3DE, C4DE, C1DF, C2DF, C3DF, C4DF, C1DG, C2DG, C3DG, C4DG, C1DH, C2DH, C3DH, C4DH, C1DI, C2DI, C3DI, C4DI, C1DJ, C2DJ, C3DJ, C4DJ, C1DK, C2DK, C3DK, C4DK, C1DL, C2DL, C3DL, C4DL, C1DM, C2DM, C3DM, C4DM, C1DN, C2DN, C3DN, C4DN, C1DO, C2DO, C3DO, C4DO, C1DP, C2DP, C3DP, C4DP, C1DQ, C2DQ, C3DQ, C4DQ, C1DR, C2DR, C3DR, C4DR, C1DS, C2DS, C3DS, C4DS, C1DT, C2DT, C3DT, C4DT, C1DU, C2DU, C3DU, C4DU, C1DV, C2DV, C3DV, C4DV, C1DW, C2DW, C3DW, C4DW, C1DX, C2DX, C3DX, C4DX, C1DY, C2DY, C3DY, C4DY, C1DZ, C2DZ, C3DZ, C4DZ, C1EA, C2EA, C3EA, C4EA, C1EB, C2EB, C3EB, C4EB, C1EC, C2EC, C3EC, C4EC, C1ED, C2ED, C3ED, C4ED, C1EE, C2EE, C3EE, C4EE, C1EF, C2EF, C3EF, C4EF, C1EG, C2EG, C3EG, C4EG, C1EH, C2EH, C3EH, C4EH, C1EI, C2EI, C3EI, C4EI, C1EJ, C2EJ, C3EJ, C4EJ, C1EK, C2EK, C3EK, C4EK, C1EL, C2EL, C3EL, C4EL, C1EM, C2EM, C3EM, C4EM, C1EN, C2EN, C3EN, C4EN, C1EO, C2EO, C3EO, C4EO, C1EP, C2EP, C3EP, C4EP, C1EQ, C2EQ, C3EQ, C4EQ, C1ER, C2ER, C3ER, C4ER, C1ES, C2ES, C3ES, C4ES, C1ET, C2ET, C3ET, C4ET, C1EU, C2EU, C3EU, C4EU, C1EV, C2EV, C3EV, C4EV, C1EW, C2EW, C3EW, C4EW, C1EX, C2EX, C3EX, C4EX, C1EY, C2EY, C3EY, C4EY, C1EZ, C2EZ, C3EZ, C4EZ, C1FA, C2FA, C3FA, C4FA, C1FB, C2FB, C3FB, C4FB, C1FC, C2FC, C3FC, C4FC, C1FD, C2FD, C3FD, C4FD, C1FE, C2FE, C3FE, C4FE, C1FF, C2FF, C3FF, C4FF, C1FG, C2FG, C3FG, C4FG, C1FH, C2FH, C3FH, C4FH, C1FI, C2FI, C3FI, C4FI, C1FJ, C2FJ, C3FJ, C4FJ, C1FK, C2FK, C3FK, C4FK, C1FL, C2FL, C3FL, C4FL, C1FM, C2FM, C3FM, C4FM, C1FN, C2FN, C3FN, C4FN, C1FO, C2FO, C3FO, C4FO, C1FP, C2FP, C3FP, C4FP, C1FQ, C2FQ, C3FQ, C4FQ, C1FR, C2FR, C3FR, C4FR, C1FS, C2FS, C3FS, C4FS, C1FT, C2FT, C3FT, C4FT, C1FU, C2FU, C3FU, C4FU, C1FV, C2FV, C3FV, C4FV, C1FW, C2FW, C3FW, C4FW, C1FX, C2FX, C3FX, C4FX, C1FY, C2FY, C3FY, C4FY, C1FZ, C2FZ, C3FZ, C4FZ, C1GA, C2GA, C3GA, C4GA, C1GB, C2GB, C3GB, C4GB, C1GC, C2GC, C3GC, C4GC, C1GD, C2GD, C3GD, C4GD, C1GE, C2GE, C3GE, C4GE, C1GF, C2GF, C3GF, C4GF, C1GG, C2GG, C3GG, C4GG, C1GH, C2GH, C3GH, C4GH, C1GI, C2GI, C3GI, C4GI, C1GJ, C2GJ, C3GJ, C4GJ, C1GK, C2GK, C3GK, C4GK, C1GL, C2GL, C3GL, C4GL, C1GM, C2GM, C3GM, C4GM, C1GN, C2GN, C3GN, C4GN, C1GO, C2GO, C3GO, C4GO, C1GP, C2GP, C3GP, C4GP, C1GQ, C2GQ, C3GQ, C4GQ, C1GR, C2GR, C3GR, C4GR, C1GS, C2GS, C3GS, C4GS, C1GT, C2GT, C3GT, C4GT, C1GU, C2GU, C3GU, C4GU, C1GV, C2GV, C3GV, C4GV, C1GW, C2GW, C3GW, C4GW, C1GX, C2GX, C3GX, C4GX, C1GY, C2GY, C3GY, C4GY, C1GZ, C2GZ, C3GZ, C4GZ, C1HA, C2HA, C3HA, C4HA, C1HB, C2HB, C3HB, C4HB, C1HC, C2HC, C3HC, C4HC, C1HD, C2HD, C3HD, C4HD, C1HE, C2HE, C3HE, C4HE, C1HF, C2HF, C3HF, C4HF, C1HG, C2HG, C3HG, C4HG, C1HH, C2HH, C3HH, C4HH, C1HI, C2HI, C3HI, C4HI, C1HJ, C2HJ, C3HJ, C4HJ, C1HK, C2HK, C3HK, C4HK, C1HL, C2HL, C3HL, C4HL, C1HM, C2HM, C3HM, C4HM, C1HN, C2HN, C3HN, C4HN, C1HO, C2HO, C3HO, C4HO, C1HP, C2HP, C3HP, C4HP, C1HQ, C2HQ, C3HQ, C4HQ, C1HR, C2HR, C3HR, C4HR, C1HS, C2HS, C3HS, C4HS, C1HT, C2HT, C3HT, C4HT, C1HU, C2HU, C3HU, C4HU, C1HV, C2HV, C3HV, C4HV, C1HW, C2HW, C3HW, C4HW, C1HX, C2HX, C3HX, C4HX, C1HY, C2HY, C3HY, C4HY, C1HZ, C2HZ, C3HZ, C4HZ, C1IA, C2IA, C3IA, C4IA, C1IB, C2IB, C3IB, C4IB, C1IC, C2IC, C3IC, C4IC, C1ID, C2ID, C3ID, C4ID, C1IE, C2IE, C3IE, C4IE, C1IF, C2IF, C3IF, C4IF, C1IG, C2IG, C3IG, C4IG, C1IH, C2IH, C3IH, C4IH, C1

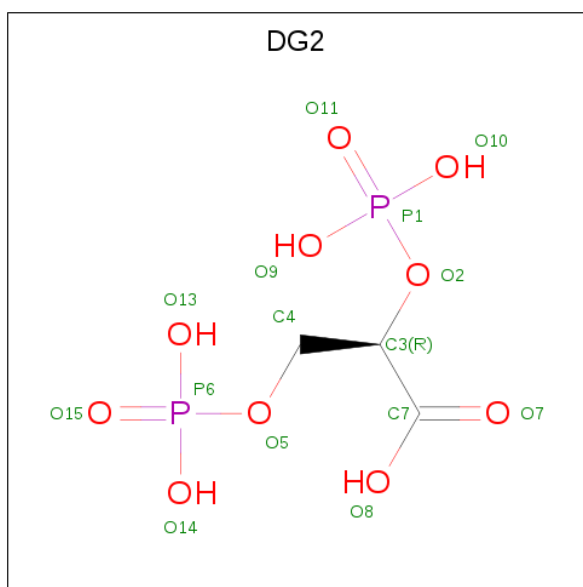
Mol	Chain	Residues	Atoms					ZeroOcc	AltConf
3	A	1	Total 43	C 34	Fe 1	N 4	O 4	0	0
3	B	1	Total 43	C 34	Fe 1	N 4	O 4	0	0
3	C	1	Total 43	C 34	Fe 1	N 4	O 4	0	0
3	D	1	Total 43	C 34	Fe 1	N 4	O 4	0	0

- Molecule 4 is (2R)-2-((2S)-3-(biphenyl-4-yl)-2-[(3,5-dimethylbenzoyl)(methyl)amino]propanoyl}amino)-3-(1H-indol-3-yl)propanoic acid (non-preferred name) (three-letter code: IRL) (formula: C₃₆H₃₅N₃O₄).



Mol	Chain	Residues	Atoms				ZeroOcc	AltConf
4	B	1	Total	C	N	O	0	1
			43	36	3	4		

- Molecule 5 is (2R)-2,3-diphosphoglyceric acid (three-letter code: DG2) (formula: C₃H₈O₁₀P₂).



Mol	Chain	Residues	Atoms				ZeroOcc	AltConf
5	D	1	Total	C	O	P	0	1
			15	3	10	2		
5	D	1	Total	C	O	P	0	1
			15	3	10	2		

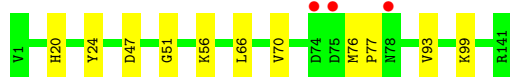
- Molecule 6 is water.

Mol	Chain	Residues	Atoms		ZeroOcc	AltConf
6	A	148	Total	O	0	0
			148	148		
6	B	139	Total	O	0	0
			139	139		
6	C	192	Total	O	0	0
			192	192		
6	D	169	Total	O	0	0
			169	169		

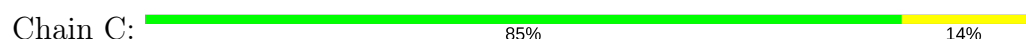
3 Residue-property plots [i](#)

These plots are drawn for all protein, RNA and DNA chains in the entry. The first graphic for a chain summarises the proportions of the various outlier classes displayed in the second graphic. The second graphic shows the sequence view annotated by issues in geometry and electron density. Residues are color-coded according to the number of geometric quality criteria for which they contain at least one outlier: green = 0, yellow = 1, orange = 2 and red = 3 or more. A red dot above a residue indicates a poor fit to the electron density ($RSRZ > 2$). Stretches of 2 or more consecutive residues without any outlier are shown as a green connector. Residues present in the sample, but not in the model, are shown in grey.

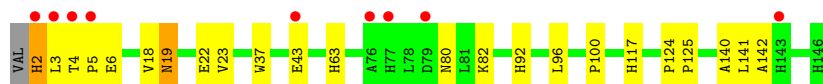
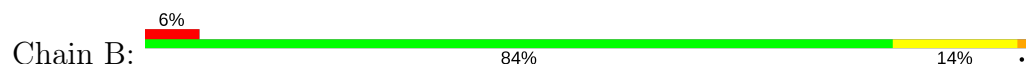
- Molecule 1: Hemoglobin subunit alpha



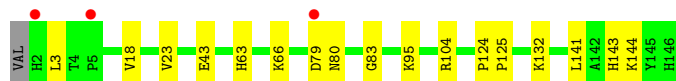
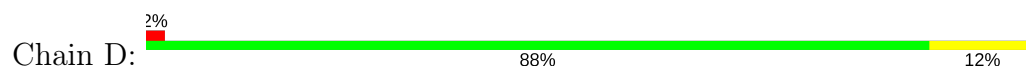
- Molecule 1: Hemoglobin subunit alpha



- Molecule 2: Hemoglobin subunit beta



- Molecule 2: Hemoglobin subunit beta



4 Data and refinement statistics

Property	Value	Source
Space group	P 21 21 2	Depositor
Cell constants a, b, c, α , β , γ	95.75Å 98.23Å 65.34Å 90.00° 90.00° 90.00°	Depositor
Resolution (Å)	29.49 – 1.80 29.49 – 1.80	Depositor EDS
% Data completeness (in resolution range)	92.2 (29.49-1.80) 92.4 (29.49-1.80)	Depositor EDS
R_{merge}	0.04	Depositor
R_{sym}	(Not available)	Depositor
$\langle I/\sigma(I) \rangle$ ¹	7.95 (at 1.80Å)	Xtriage
Refinement program	CNS	Depositor
R, R_{free}	0.203 , 0.228 0.192 , 0.217	Depositor DCC
R_{free} test set	2706 reflections (5.07%)	wwPDB-VP
Wilson B-factor (Å ²)	19.6	Xtriage
Anisotropy	0.244	Xtriage
Bulk solvent k_{sol} (e/Å ³), B_{sol} (Å ²)	0.32 , 45.6	EDS
L-test for twinning ²	$\langle L \rangle = 0.49$, $\langle L^2 \rangle = 0.32$	Xtriage
Estimated twinning fraction	0.012 for k,h,-l	Xtriage
F_o, F_c correlation	0.95	EDS
Total number of atoms	5263	wwPDB-VP
Average B, all atoms (Å ²)	19.0	wwPDB-VP

Xtriage's analysis on translational NCS is as follows: *The largest off-origin peak in the Patterson function is 5.38% of the height of the origin peak. No significant pseudotranslation is detected.*

¹Intensities estimated from amplitudes.

²Theoretical values of $\langle |L| \rangle$, $\langle L^2 \rangle$ for acentric reflections are 0.5, 0.333 respectively for untwinned datasets, and 0.375, 0.2 for perfectly twinned datasets.

5 Model quality [i](#)

5.1 Standard geometry [i](#)

Bond lengths and bond angles in the following residue types are not validated in this section: DG2, IRL, MH0

The Z score for a bond length (or angle) is the number of standard deviations the observed value is removed from the expected value. A bond length (or angle) with $|Z| > 5$ is considered an outlier worth inspection. RMSZ is the root-mean-square of all Z scores of the bond lengths (or angles).

Mol	Chain	Bond lengths		Bond angles	
		RMSZ	$\# Z > 5$	RMSZ	$\# Z > 5$
1	A	0.29	0/1097	0.51	1/1491 (0.1%)
1	C	0.32	0/1097	0.55	1/1491 (0.1%)
2	B	0.30	0/1146	0.53	0/1556
2	D	0.32	0/1146	0.54	0/1556
All	All	0.31	0/4486	0.53	2/6094 (0.0%)

There are no bond length outliers.

All (2) bond angle outliers are listed below:

Mol	Chain	Res	Type	Atoms	Z	Observed(°)	Ideal(°)
1	C	47	ASP	N-CA-C	-5.65	95.76	111.00
1	A	47	ASP	N-CA-C	-5.51	96.11	111.00

There are no chirality outliers.

There are no planarity outliers.

5.2 Too-close contacts [i](#)

In the following table, the Non-H and H(model) columns list the number of non-hydrogen atoms and hydrogen atoms in the chain respectively. The H(added) column lists the number of hydrogen atoms added and optimized by MolProbity. The Clashes column lists the number of clashes within the asymmetric unit, whereas Symm-Clashes lists symmetry related clashes.

Mol	Chain	Non-H	H(model)	H(added)	Clashes	Symm-Clashes
1	A	1069	0	1073	6	0
1	C	1069	0	1073	16	0
2	B	1116	0	1106	23	0
2	D	1116	0	1106	12	0
3	A	43	0	34	3	0

Continued on next page...

Continued from previous page...

Mol	Chain	Non-H	H(model)	H(added)	Clashes	Symm-Clashes
3	B	43	0	34	5	0
3	C	43	0	34	4	0
3	D	43	0	34	5	0
4	B	43	0	30	15	0
5	D	30	0	5	0	0
6	A	148	0	0	1	0
6	B	139	0	0	3	0
6	C	192	0	0	1	0
6	D	169	0	0	5	0
All	All	5263	0	4529	79	0

The all-atom clashscore is defined as the number of clashes found per 1000 atoms (including hydrogen atoms). The all-atom clashscore for this structure is 9.

The worst 5 of 79 close contacts within the same asymmetric unit are listed below, sorted by their clash magnitude.

Atom-1	Atom-2	Interatomic distance (Å)	Clash overlap (Å)
4:B:202[A]:IRL:H1	4:B:202[A]:IRL:H23	1.37	1.02
4:B:202[A]:IRL:H23	6:D:467:HOH:O	1.62	0.98
2:B:82:LYS:HE3	6:B:402:HOH:O	1.64	0.97
4:B:202[A]:IRL:C33	4:B:202[A]:IRL:H6	1.97	0.94
1:C:113:LEU:HB3	1:C:116:GLU:HG2	1.64	0.79

There are no symmetry-related clashes.

5.3 Torsion angles ⓘ

5.3.1 Protein backbone ⓘ

In the following table, the Percentiles column shows the percent Ramachandran outliers of the chain as a percentile score with respect to all X-ray entries followed by that with respect to entries of similar resolution.

The Analysed column shows the number of residues for which the backbone conformation was analysed, and the total number of residues.

Mol	Chain	Analysed	Favoured	Allowed	Outliers	Percentiles	
1	A	139/141 (99%)	135 (97%)	4 (3%)	0	100	100
1	C	139/141 (99%)	137 (99%)	2 (1%)	0	100	100

Continued on next page...

Continued from previous page...

Mol	Chain	Analysed	Favoured	Allowed	Outliers	Percentiles	
2	B	143/146 (98%)	140 (98%)	3 (2%)	0	100	100
2	D	143/146 (98%)	141 (99%)	2 (1%)	0	100	100
All	All	564/574 (98%)	553 (98%)	11 (2%)	0	100	100

There are no Ramachandran outliers to report.

5.3.2 Protein sidechains ⓘ

In the following table, the Percentiles column shows the percent sidechain outliers of the chain as a percentile score with respect to all X-ray entries followed by that with respect to entries of similar resolution.

The Analysed column shows the number of residues for which the sidechain conformation was analysed, and the total number of residues.

Mol	Chain	Analysed	Rotameric	Outliers	Percentiles	
1	A	113/113 (100%)	113 (100%)	0	100	100
1	C	113/113 (100%)	111 (98%)	2 (2%)	62	51
2	B	117/118 (99%)	114 (97%)	3 (3%)	49	35
2	D	117/118 (99%)	116 (99%)	1 (1%)	81	77
All	All	460/462 (100%)	454 (99%)	6 (1%)	71	65

5 of 6 residues with a non-rotameric sidechain are listed below:

Mol	Chain	Res	Type
2	B	80	ASN
2	D	43	GLU
1	C	1	VAL
2	B	19	ASN
1	C	92	ARG

Some sidechains can be flipped to improve hydrogen bonding and reduce clashes. 5 of 12 such sidechains are listed below:

Mol	Chain	Res	Type
2	B	117	HIS
2	B	139	ASN
2	D	77	HIS
2	B	80	ASN
2	D	2	HIS

5.3.3 RNA ⓘ

There are no RNA molecules in this entry.

5.4 Non-standard residues in protein, DNA, RNA chains ⓘ

There are no non-standard protein/DNA/RNA residues in this entry.

5.5 Carbohydrates ⓘ

There are no carbohydrates in this entry.

5.6 Ligand geometry ⓘ

7 ligands are modelled in this entry.

In the following table, the Counts columns list the number of bonds (or angles) for which Mogul statistics could be retrieved, the number of bonds (or angles) that are observed in the model and the number of bonds (or angles) that are defined in the Chemical Component Dictionary. The Link column lists molecule types, if any, to which the group is linked. The Z score for a bond length (or angle) is the number of standard deviations the observed value is removed from the expected value. A bond length (or angle) with $|Z| > 2$ is considered an outlier worth inspection. RMSZ is the root-mean-square of all Z scores of the bond lengths (or angles).

Mol	Type	Chain	Res	Link	Bond lengths			Bond angles		
					Counts	RMSZ	$\# Z > 2$	Counts	RMSZ	$\# Z > 2$
3	MH0	A	201	1	28,50,50	1.50	3 (10%)	14,82,82	1.96	2 (14%)
3	MH0	B	201	2	28,50,50	1.60	4 (14%)	14,82,82	2.29	3 (21%)
4	IRL	B	202[A]	-	43,47,47	3.11	18 (41%)	55,66,66	3.42	20 (36%)
3	MH0	C	201	1	28,50,50	1.63	5 (17%)	14,82,82	2.03	2 (14%)
3	MH0	D	201	2	28,50,50	1.58	4 (14%)	14,82,82	2.26	3 (21%)
5	DG2	D	202[B]	-	11,14,14	2.17	3 (27%)	16,21,21	1.51	3 (18%)
5	DG2	D	203[C]	-	11,14,14	3.47	5 (45%)	16,21,21	2.06	3 (18%)

In the following table, the Chirals column lists the number of chiral outliers, the number of chiral centers analysed, the number of these observed in the model and the number defined in the Chemical Component Dictionary. Similar counts are reported in the Torsion and Rings columns. '-' means no outliers of that kind were identified.

Mol	Type	Chain	Res	Link	Chirals	Torsions	Rings
3	MH0	A	201	1	-	0/10/54/54	0/0/8/8
3	MH0	B	201	2	-	0/10/54/54	0/0/8/8

Continued on next page...

Continued from previous page...

Mol	Type	Chain	Res	Link	Chirals	Torsions	Rings
4	IRL	B	202[A]	-	-	0/31/36/36	0/5/5/5
3	MH0	C	201	1	-	0/10/54/54	0/0/8/8
3	MH0	D	201	2	-	0/10/54/54	0/0/8/8
5	DG2	D	202[B]	-	-	0/11/15/15	0/0/0/0
5	DG2	D	203[C]	-	-	1/11/15/15	0/0/0/0

The worst 5 of 42 bond length outliers are listed below:

Mol	Chain	Res	Type	Atoms	Z	Observed(Å)	Ideal(Å)
4	B	202[A]	IRL	C17-C18	-6.16	1.27	1.38
4	B	202[A]	IRL	C12-C11	-5.98	1.42	1.54
4	B	202[A]	IRL	C2-C1	-4.57	1.31	1.39
3	C	201	MH0	CAC-C3C	-4.40	1.40	1.52
3	B	201	MH0	CAB-C3B	-4.39	1.40	1.52

The worst 5 of 36 bond angle outliers are listed below:

Mol	Chain	Res	Type	Atoms	Z	Observed(°)	Ideal(°)
4	B	202[A]	IRL	C12-C11-N10	-14.08	90.01	112.64
4	B	202[A]	IRL	O28-C27-N29	-6.80	110.25	122.91
4	B	202[A]	IRL	C31-C30-N29	-4.20	103.28	112.39
4	B	202[A]	IRL	C7-C1-C2	-3.96	115.19	120.96
4	B	202[A]	IRL	C15-C14-C13	-3.88	115.67	121.02

There are no chirality outliers.

All (1) torsion outliers are listed below:

Mol	Chain	Res	Type	Atoms
5	D	203[C]	DG2	P6-O5-C4-C3

There are no ring outliers.

5 monomers are involved in 32 short contacts:

Mol	Chain	Res	Type	Clashes	Symm-Clashes
3	A	201	MH0	3	0
3	B	201	MH0	5	0
4	B	202[A]	IRL	15	0
3	C	201	MH0	4	0
3	D	201	MH0	5	0

5.7 Other polymers [i](#)

There are no such residues in this entry.

5.8 Polymer linkage issues [i](#)

There are no chain breaks in this entry.

6 Fit of model and data [i](#)

6.1 Protein, DNA and RNA chains [i](#)

In the following table, the column labelled ‘#RSRZ> 2’ contains the number (and percentage) of RSRZ outliers, followed by percent RSRZ outliers for the chain as percentile scores relative to all X-ray entries and entries of similar resolution. The OWAB column contains the minimum, median, 95th percentile and maximum values of the occupancy-weighted average B-factor per residue. The column labelled ‘Q< 0.9’ lists the number of (and percentage) of residues with an average occupancy less than 0.9.

Mol	Chain	Analysed	<RSRZ>	#RSRZ>2	OWAB(Å ²)	Q<0.9
1	A	141/141 (100%)	0.20	3 (2%) 63 59	11, 19, 30, 34	0
1	C	141/141 (100%)	0.01	0 100 100	10, 13, 21, 25	0
2	B	145/146 (99%)	0.53	9 (6%) 20 16	13, 20, 34, 47	0
2	D	145/146 (99%)	0.26	3 (2%) 63 59	9, 13, 26, 46	0
All	All	572/574 (99%)	0.25	15 (2%) 56 51	9, 16, 30, 47	0

The worst 5 of 15 RSRZ outliers are listed below:

Mol	Chain	Res	Type	RSRZ
2	D	2	HIS	9.7
2	B	2	HIS	6.4
2	B	3	LEU	5.1
2	D	5	PRO	3.8
2	B	143	HIS	3.3

6.2 Non-standard residues in protein, DNA, RNA chains [i](#)

There are no non-standard protein/DNA/RNA residues in this entry.

6.3 Carbohydrates [i](#)

There are no carbohydrates in this entry.

6.4 Ligands [i](#)

In the following table, the Atoms column lists the number of modelled atoms in the group and the number defined in the chemical component dictionary. The B-factors column lists the minimum, median, 95th percentile and maximum values of B factors of atoms in the group. The column labelled ‘Q< 0.9’ lists the number of atoms with occupancy less than 0.9.

Mol	Type	Chain	Res	Atoms	RSCC	RSR	B-factors(\AA^2)	Q<0.9
5	DG2	D	202[B]	15/15	0.60	0.23	45,46,47,47	15
5	DG2	D	203[C]	15/15	0.64	0.22	45,45,46,46	15
4	IRL	B	202[A]	43/43	0.66	0.40	46,51,61,62	43
3	MH0	B	201	43/43	0.94	0.12	16,19,29,30	0
3	MH0	A	201	43/43	0.94	0.12	11,13,21,25	0
3	MH0	C	201	43/43	0.95	0.11	9,11,17,22	0
3	MH0	D	201	43/43	0.96	0.11	8,10,14,18	0

6.5 Other polymers [i](#)

There are no such residues in this entry.