



# wwPDB X-ray Structure Validation Summary Report ⓘ

Mar 9, 2018 – 01:06 am GMT

PDB ID : 3LUM  
Title : Structure of ulilysin mutant M290L  
Authors : Tallant, C.; Garcia-Castellanos, R.; Baumann, U.; Gomis-Ruth, F.X.  
Deposited on : 2010-02-18  
Resolution : 1.70 Å(reported)

This is a wwPDB X-ray Structure Validation Summary Report for a publicly released PDB entry.

We welcome your comments at [validation@mail.wwpdb.org](mailto:validation@mail.wwpdb.org)

A user guide is available at

<https://www.wwpdb.org/validation/2017/XrayValidationReportHelp>

with specific help available everywhere you see the ⓘ symbol.

---

The following versions of software and data (see [references ⓘ](#)) were used in the production of this report:

MolProbity : 4.02b-467  
Mogul : 1.7.3 (157068), CSD as539be (2018)  
Xtriage (Phenix) : 1.13  
EDS : trunk30967  
Percentile statistics : 20171227.v01 (using entries in the PDB archive December 27th 2017)  
Refmac : 5.8.0158  
CCP4 : 7.0 (Gargrove)  
Ideal geometry (proteins) : Engh & Huber (2001)  
Ideal geometry (DNA, RNA) : Parkinson et al. (1996)  
Validation Pipeline (wwPDB-VP) : trunk30967

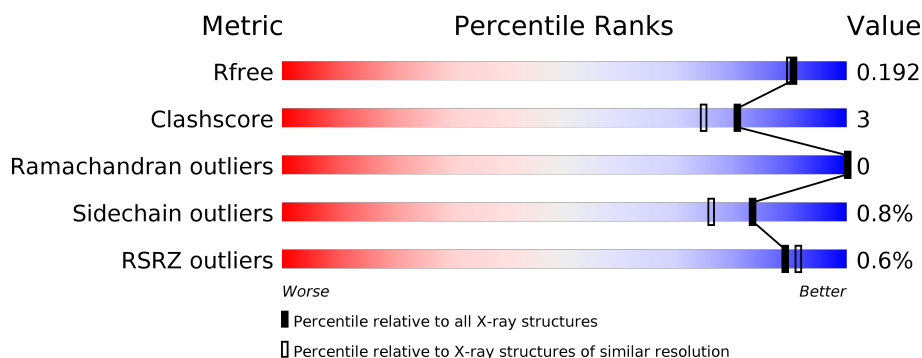
# 1 Overall quality at a glance

The following experimental techniques were used to determine the structure:

## *X-RAY DIFFRACTION*

The reported resolution of this entry is 1.70 Å.

Percentile scores (ranging between 0-100) for global validation metrics of the entry are shown in the following graphic. The table shows the number of entries on which the scores are based.



Metric	Whole archive (#Entries)	Similar resolution (#Entries, resolution range(Å))
$R_{free}$	111664	3793 (1.70-1.70)
Clashscore	122126	4167 (1.70-1.70)
Ramachandran outliers	120053	4100 (1.70-1.70)
Sidechain outliers	120020	4100 (1.70-1.70)
RSRZ outliers	108989	3718 (1.70-1.70)

The table below summarises the geometric issues observed across the polymeric chains and their fit to the electron density. The red, orange, yellow and green segments on the lower bar indicate the fraction of residues that contain outliers for  $\geq 3$ , 2, 1 and 0 types of geometric quality criteria. A grey segment represents the fraction of residues that are not modelled. The numeric value for each fraction is indicated below the corresponding segment, with a dot representing fractions  $\leq 5\%$ . The upper red bar (where present) indicates the fraction of residues that have poor fit to the electron density. The numeric value is given above the bar.

Mol	Chain	Length	Quality of chain
1	A	262	<div> <div>93%</div> <div>6% •</div> </div>
1	B	262	<div> <div>%</div> <div>95%</div> <div>5%</div> </div>
1	C	262	<div> <div>%</div> <div>96%</div> <div>•</div> </div>
1	D	262	<div> <div>97%</div> <div>•</div> </div>

## 2 Entry composition [i](#)

There are 7 unique types of molecules in this entry. The entry contains 9759 atoms, of which 0 are hydrogens and 0 are deuteriums.

In the tables below, the ZeroOcc column contains the number of atoms modelled with zero occupancy, the AltConf column contains the number of residues with at least one atom in alternate conformation and the Trace column contains the number of residues modelled with at most 2 atoms.

- Molecule 1 is a protein called Ulilysin.

Mol	Chain	Residues	Atoms					ZeroOcc	AltConf	Trace
1	A	262	Total	C	N	O	S	0	0	0
			2040	1282	341	406	11			
1	B	262	Total	C	N	O	S	0	2	0
			2044	1284	341	406	13			
1	C	262	Total	C	N	O	S	0	2	0
			2046	1287	341	407	11			
1	D	262	Total	C	N	O	S	0	4	0
			2050	1289	341	407	13			

There are 4 discrepancies between the modelled and reference sequences:

Chain	Residue	Modelled	Actual	Comment	Reference
A	290	LEU	MET	ENGINEERED	UNP Q8TL28
B	290	LEU	MET	ENGINEERED	UNP Q8TL28
C	290	LEU	MET	ENGINEERED	UNP Q8TL28
D	290	LEU	MET	ENGINEERED	UNP Q8TL28

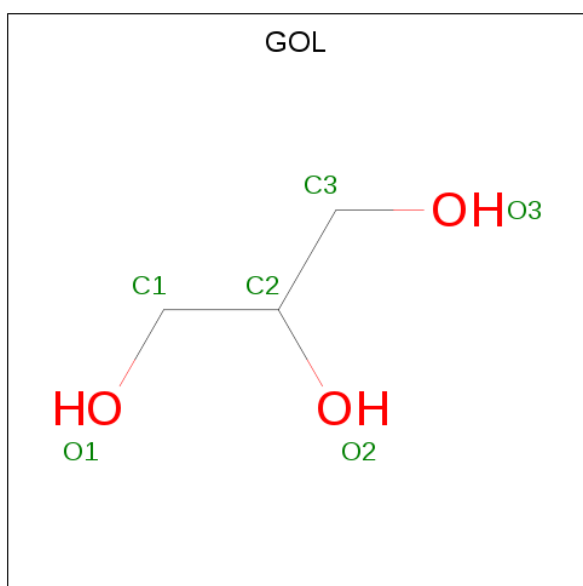
- Molecule 2 is ZINC ION (three-letter code: ZN) (formula: Zn).

Mol	Chain	Residues	Atoms		ZeroOcc	AltConf
2	B	1	Total	Zn	0	0
			1	1		
2	A	1	Total	Zn	0	0
			1	1		
2	D	1	Total	Zn	0	0
			1	1		
2	C	1	Total	Zn	0	0
			1	1		

- Molecule 3 is CALCIUM ION (three-letter code: CA) (formula: Ca).

Mol	Chain	Residues	Atoms		ZeroOcc	AltConf
3	B	3	Total 3	Ca 3	0	0
3	A	3	Total 3	Ca 3	0	0
3	D	3	Total 3	Ca 3	0	0
3	C	2	Total 2	Ca 2	0	0

- Molecule 4 is GLYCEROL (three-letter code: GOL) (formula:  $C_3H_8O_3$ ).



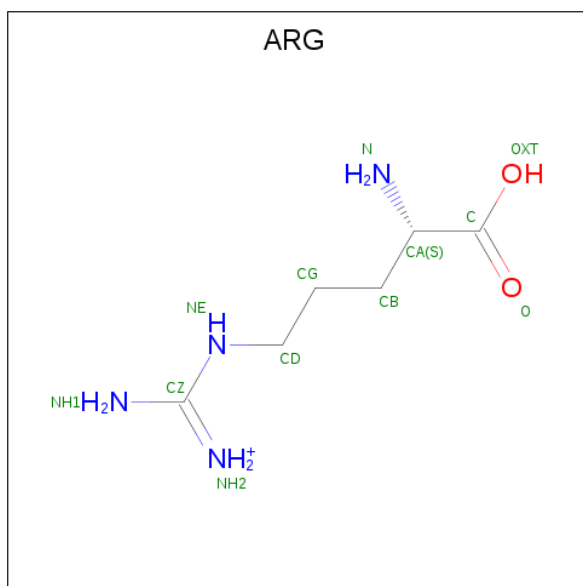
Mol	Chain	Residues	Atoms			ZeroOcc	AltConf
4	A	1	Total 6	C 3	O 3	0	0
4	B	1	Total 6	C 3	O 3	0	0
4	B	1	Total 6	C 3	O 3	0	0
4	C	1	Total 6	C 3	O 3	0	0
4	C	1	Total 6	C 3	O 3	0	0
4	C	1	Total 6	C 3	O 3	0	0
4	C	1	Total 6	C 3	O 3	0	0
4	C	1	Total 6	C 3	O 3	0	0

*Continued on next page...*

Continued from previous page...

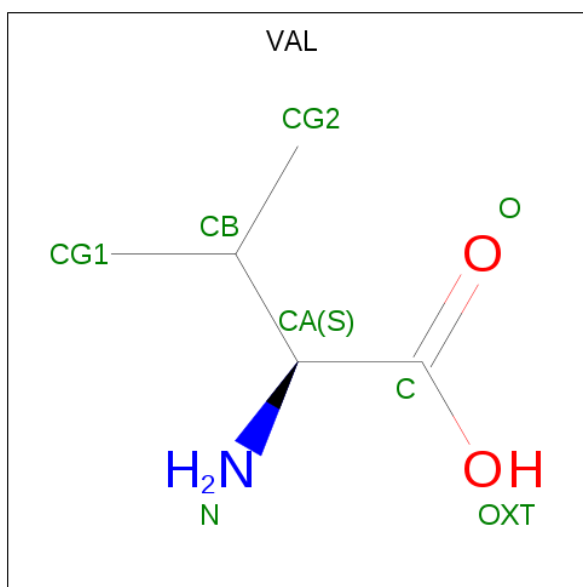
Mol	Chain	Residues	Atoms			ZeroOcc	AltConf
4	D	1	Total	C	O	0	0
			6	3	3		

- Molecule 5 is ARGinine (three-letter code: ARG) (formula:  $C_6H_{15}N_4O_2$ ).



Mol	Chain	Residues	Atoms				ZeroOcc	AltConf
5	A	1	Total	C	N	O	0	0
			11	6	4	1		
5	B	1	Total	C	N	O	0	0
			11	6	4	1		
5	C	1	Total	C	N	O	0	0
			11	6	4	1		
5	D	1	Total	C	N	O	0	0
			11	6	4	1		

- Molecule 6 is VALINE (three-letter code: VAL) (formula:  $C_5H_{11}NO_2$ ).



Mol	Chain	Residues	Atoms				ZeroOcc	AltConf
6	A	1	Total	C	N	O	0	0
			8	5	1	2		
6	B	1	Total	C	N	O	0	0
			8	5	1	2		
6	C	1	Total	C	N	O	0	0
			8	5	1	2		
6	D	1	Total	C	N	O	0	0
			8	5	1	2		

- Molecule 7 is water.

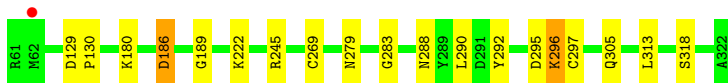
Mol	Chain	Residues	Atoms		ZeroOcc	AltConf
7	A	386	Total	O	0	0
			386	386		
7	B	347	Total	O	0	0
			347	347		
7	C	355	Total	O	0	0
			355	355		
7	D	346	Total	O	0	0
			346	346		

### 3 Residue-property plots [i](#)

These plots are drawn for all protein, RNA and DNA chains in the entry. The first graphic for a chain summarises the proportions of the various outlier classes displayed in the second graphic. The second graphic shows the sequence view annotated by issues in geometry and electron density. Residues are color-coded according to the number of geometric quality criteria for which they contain at least one outlier: green = 0, yellow = 1, orange = 2 and red = 3 or more. A red dot above a residue indicates a poor fit to the electron density ( $RSRZ > 2$ ). Stretches of 2 or more consecutive residues without any outlier are shown as a green connector. Residues present in the sample, but not in the model, are shown in grey.

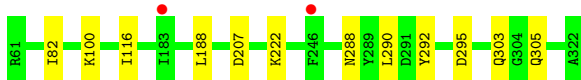
- Molecule 1: Ulilysin

Chain A: 



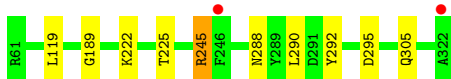
- Molecule 1: Ulilysin

Chain B: 



- Molecule 1: Ulilysin

Chain C: 



- Molecule 1: Ulilysin

Chain D: 



## 4 Data and refinement statistics

Property	Value	Source
Space group	C 2 2 21	Depositor
Cell constants a, b, c, $\alpha$ , $\beta$ , $\gamma$	97.31Å 174.11Å 124.69Å 90.00° 90.00° 90.00°	Depositor
Resolution (Å)	46.28 – 1.70 46.28 – 1.70	Depositor EDS
% Data completeness (in resolution range)	99.8 (46.28-1.70) 99.8 (46.28-1.70)	Depositor EDS
$R_{merge}$	0.10	Depositor
$R_{sym}$	0.04	Depositor
$\langle I/\sigma(I) \rangle$ <sup>1</sup>	4.60 (at 1.70Å)	Xtriage
Refinement program	REFMAC 5.5.0102	Depositor
R, $R_{free}$	0.163 , 0.195 0.162 , 0.192	Depositor DCC
$R_{free}$ test set	441 reflections (0.38%)	wwPDB-VP
Wilson B-factor (Å <sup>2</sup> )	9.2	Xtriage
Anisotropy	0.054	Xtriage
Bulk solvent $k_{sol}$ (e/Å <sup>3</sup> ), $B_{sol}$ (Å <sup>2</sup> )	0.39 , 47.9	EDS
L-test for twinning <sup>2</sup>	$\langle  L  \rangle = 0.49$ , $\langle L^2 \rangle = 0.32$	Xtriage
Estimated twinning fraction	0.000 for 1/2*h-1/2*k,-3/2*h-1/2*k,-l 0.000 for 1/2*h+1/2*k,3/2*h-1/2*k,-l	Xtriage
$F_o, F_c$ correlation	0.97	EDS
Total number of atoms	9759	wwPDB-VP
Average B, all atoms (Å <sup>2</sup> )	10.0	wwPDB-VP

Xtriage's analysis on translational NCS is as follows: *The analyses of the Patterson function reveals a significant off-origin peak that is 77.36 % of the origin peak, indicating pseudo-translational symmetry. The chance of finding a peak of this or larger height randomly in a structure without pseudo-translational symmetry is equal to 8.6411e-07. The detected translational NCS is most likely also responsible for the elevated intensity ratio.*

<sup>1</sup>Intensities estimated from amplitudes.

<sup>2</sup>Theoretical values of  $\langle |L| \rangle$ ,  $\langle L^2 \rangle$  for acentric reflections are 0.5, 0.333 respectively for untwinned datasets, and 0.375, 0.2 for perfectly twinned datasets.

## 5 Model quality [i](#)

### 5.1 Standard geometry [i](#)

Bond lengths and bond angles in the following residue types are not validated in this section: GOL, ZN, CA

The Z score for a bond length (or angle) is the number of standard deviations the observed value is removed from the expected value. A bond length (or angle) with  $|Z| > 5$  is considered an outlier worth inspection. RMSZ is the root-mean-square of all Z scores of the bond lengths (or angles).

Mol	Chain	Bond lengths		Bond angles	
		RMSZ	$\# Z  > 5$	RMSZ	$\# Z  > 5$
1	A	0.60	0/2092	0.67	0/2854
1	B	0.60	0/2104	0.70	0/2871
1	C	0.61	0/2106	0.68	0/2873
1	D	0.60	0/2118	0.70	0/2890
All	All	0.60	0/8420	0.69	0/11488

There are no bond length outliers.

There are no bond angle outliers.

There are no chirality outliers.

There are no planarity outliers.

### 5.2 Too-close contacts [i](#)

In the following table, the Non-H and H(model) columns list the number of non-hydrogen atoms and hydrogen atoms in the chain respectively. The H(added) column lists the number of hydrogen atoms added and optimized by MolProbity. The Clashes column lists the number of clashes within the asymmetric unit, whereas Symm-Clashes lists symmetry related clashes.

Mol	Chain	Non-H	H(model)	H(added)	Clashes	Symm-Clashes
1	A	2040	0	1910	21	0
1	B	2044	0	1910	10	0
1	C	2046	0	1918	8	0
1	D	2050	0	1918	5	0
2	A	1	0	0	0	0
2	B	1	0	0	0	0
2	C	1	0	0	0	0
2	D	1	0	0	0	0
3	A	3	0	0	0	0

*Continued on next page...*

*Continued from previous page...*

Mol	Chain	Non-H	H(model)	H(added)	Clashes	Symm-Clashes
3	B	3	0	0	0	0
3	C	2	0	0	0	0
3	D	3	0	0	0	0
4	A	6	0	8	0	0
4	B	12	0	16	0	0
4	C	30	0	40	2	0
4	D	6	0	8	0	0
5	A	11	0	12	1	0
5	B	11	0	12	2	0
5	C	11	0	12	2	0
5	D	11	0	12	0	0
6	A	8	0	9	0	0
6	B	8	0	9	1	0
6	C	8	0	9	0	0
6	D	8	0	9	0	0
7	A	386	0	0	2	2
7	B	347	0	0	3	3
7	C	355	0	0	2	3
7	D	346	0	0	0	4
All	All	9759	0	7812	46	7

The all-atom clashscore is defined as the number of clashes found per 1000 atoms (including hydrogen atoms). The all-atom clashscore for this structure is 3.

The worst 5 of 46 close contacts within the same asymmetric unit are listed below, sorted by their clash magnitude.

Atom-1	Atom-2	Interatomic distance (Å)	Clash overlap (Å)
1:A:269:CYS:HB2	1:A:296:LYS:NZ	1.55	1.22
1:B:303:GLN:HG3	7:B:1092:HOH:O	1.62	0.99
1:A:269:CYS:CB	1:A:296:LYS:NZ	2.31	0.93
1:A:269:CYS:HB2	1:A:296:LYS:HZ1	1.44	0.81
1:A:269:CYS:HB2	1:A:296:LYS:HZ3	1.47	0.80

The worst 5 of 7 symmetry-related close contacts are listed below. The label for Atom-2 includes the symmetry operator and encoded unit-cell translations to be applied.

Atom-1	Atom-2	Interatomic distance (Å)	Clash overlap (Å)
7:A:856:HOH:O	7:C:858:HOH:O[6_565]	1.42	0.78
7:B:1341:HOH:O	7:D:831:HOH:O[6_555]	1.50	0.70
7:B:829:HOH:O	7:D:831:HOH:O[6_555]	1.72	0.48

*Continued on next page...*

*Continued from previous page...*

Atom-1	Atom-2	Interatomic distance (Å)	Clash overlap (Å)
7:D:809:HOH:O	7:D:1117:HOH:O[3_556]	1.99	0.21
7:B:1176:HOH:O	7:C:1400:HOH:O[7_546]	2.02	0.18

## 5.3 Torsion angles [i](#)

### 5.3.1 Protein backbone [i](#)

In the following table, the Percentiles column shows the percent Ramachandran outliers of the chain as a percentile score with respect to all X-ray entries followed by that with respect to entries of similar resolution.

The Analysed column shows the number of residues for which the backbone conformation was analysed, and the total number of residues.

Mol	Chain	Analysed	Favoured	Allowed	Outliers	Percentiles	
1	A	260/262 (99%)	252 (97%)	8 (3%)	0	100	100
1	B	262/262 (100%)	255 (97%)	7 (3%)	0	100	100
1	C	262/262 (100%)	254 (97%)	8 (3%)	0	100	100
1	D	264/262 (101%)	257 (97%)	7 (3%)	0	100	100
All	All	1048/1048 (100%)	1018 (97%)	30 (3%)	0	100	100

There are no Ramachandran outliers to report.

### 5.3.2 Protein sidechains [i](#)

In the following table, the Percentiles column shows the percent sidechain outliers of the chain as a percentile score with respect to all X-ray entries followed by that with respect to entries of similar resolution.

The Analysed column shows the number of residues for which the sidechain conformation was analysed, and the total number of residues.

Mol	Chain	Analysed	Rotameric	Outliers	Percentiles	
1	A	226/226 (100%)	223 (99%)	3 (1%)	71	58
1	B	228/226 (101%)	228 (100%)	0	100	100
1	C	228/226 (101%)	225 (99%)	3 (1%)	71	58
1	D	230/226 (102%)	229 (100%)	1 (0%)	92	88
All	All	912/904 (101%)	905 (99%)	7 (1%)	83	76

5 of 7 residues with a non-rotameric sidechain are listed below:

Mol	Chain	Res	Type
1	C	119	LEU
1	D	185	GLN
1	C	245	ARG
1	A	292	TYR
1	C	292	TYR

Some sidechains can be flipped to improve hydrogen bonding and reduce clashes. 5 of 7 such sidechains are listed below:

Mol	Chain	Res	Type
1	C	107	GLN
1	D	288	ASN
1	C	185	GLN
1	B	262	GLN
1	C	288	ASN

### 5.3.3 RNA [i](#)

There are no RNA molecules in this entry.

## 5.4 Non-standard residues in protein, DNA, RNA chains [i](#)

There are no non-standard protein/DNA/RNA residues in this entry.

## 5.5 Carbohydrates [i](#)

There are no carbohydrates in this entry.

## 5.6 Ligand geometry [i](#)

Of 32 ligands modelled in this entry, 15 are monoatomic - leaving 17 for Mogul analysis.

In the following table, the Counts columns list the number of bonds (or angles) for which Mogul statistics could be retrieved, the number of bonds (or angles) that are observed in the model and the number of bonds (or angles) that are defined in the Chemical Component Dictionary. The Link column lists molecule types, if any, to which the group is linked. The Z score for a bond length (or angle) is the number of standard deviations the observed value is removed from the expected value. A bond length (or angle) with  $|Z| > 2$  is considered an outlier worth inspection. RMSZ is the root-mean-square of all Z scores of the bond lengths (or angles).

Mol	Type	Chain	Res	Link	Bond lengths			Bond angles		
					Counts	RMSZ	# Z  > 2	Counts	RMSZ	# Z  > 2
4	GOL	A	1404	-	5,5,5	0.34	0	5,5,5	0.71	0
5	ARG	A	501	6	10,10,11	0.63	0	7,11,13	0.77	0
6	VAL	A	502	5	3,7,7	0.63	0	3,9,9	0.12	0
4	GOL	B	1405	-	5,5,5	0.31	0	5,5,5	0.51	0
4	GOL	B	1406	-	5,5,5	0.28	0	5,5,5	0.63	0
5	ARG	B	501	6	10,10,11	0.68	0	7,11,13	1.06	0
6	VAL	B	502	5	3,7,7	0.39	0	3,9,9	0.17	0
4	GOL	C	1402	-	5,5,5	0.35	0	5,5,5	0.62	0
4	GOL	C	1403	-	5,5,5	0.35	0	5,5,5	0.33	0
4	GOL	C	1407	-	5,5,5	0.24	0	5,5,5	0.37	0
4	GOL	C	1408	-	5,5,5	0.30	0	5,5,5	0.33	0
4	GOL	C	1410	-	5,5,5	0.37	0	5,5,5	0.19	0
5	ARG	C	501	6	10,10,11	0.56	0	7,11,13	0.78	0
6	VAL	C	502	5	3,7,7	0.62	0	3,9,9	0.12	0
4	GOL	D	1409	-	5,5,5	0.30	0	5,5,5	0.42	0
5	ARG	D	501	6	10,10,11	0.59	0	7,11,13	0.78	0
6	VAL	D	502	5	3,7,7	0.49	0	3,9,9	0.25	0

In the following table, the Chirals column lists the number of chiral outliers, the number of chiral centers analysed, the number of these observed in the model and the number defined in the Chemical Component Dictionary. Similar counts are reported in the Torsion and Rings columns. '-' means no outliers of that kind were identified.

Mol	Type	Chain	Res	Link	Chirals	Torsions	Rings
4	GOL	A	1404	-	-	0/4/4/4	0/0/0/0
5	ARG	A	501	6	-	0/7/9/11	0/0/0/0
6	VAL	A	502	5	-	0/4/8/8	0/0/0/0
4	GOL	B	1405	-	-	0/4/4/4	0/0/0/0
4	GOL	B	1406	-	-	0/4/4/4	0/0/0/0
5	ARG	B	501	6	-	0/7/9/11	0/0/0/0
6	VAL	B	502	5	-	0/4/8/8	0/0/0/0
4	GOL	C	1402	-	-	0/4/4/4	0/0/0/0
4	GOL	C	1403	-	-	0/4/4/4	0/0/0/0
4	GOL	C	1407	-	-	0/4/4/4	0/0/0/0
4	GOL	C	1408	-	-	0/4/4/4	0/0/0/0
4	GOL	C	1410	-	-	0/4/4/4	0/0/0/0
5	ARG	C	501	6	-	0/7/9/11	0/0/0/0
6	VAL	C	502	5	-	0/4/8/8	0/0/0/0
4	GOL	D	1409	-	-	0/4/4/4	0/0/0/0
5	ARG	D	501	6	-	0/7/9/11	0/0/0/0
6	VAL	D	502	5	-	0/4/8/8	0/0/0/0

There are no bond length outliers.

There are no bond angle outliers.

There are no chirality outliers.

There are no torsion outliers.

There are no ring outliers.

6 monomers are involved in 8 short contacts:

Mol	Chain	Res	Type	Clashes	Symm-Clashes
5	A	501	ARG	1	0
5	B	501	ARG	2	0
6	B	502	VAL	1	0
4	C	1403	GOL	1	0
4	C	1410	GOL	1	0
5	C	501	ARG	2	0

## 5.7 Other polymers [i](#)

There are no such residues in this entry.

## 5.8 Polymer linkage issues [i](#)

There are no chain breaks in this entry.

## 6 Fit of model and data [i](#)

### 6.1 Protein, DNA and RNA chains [i](#)

In the following table, the column labelled ‘#RSRZ> 2’ contains the number (and percentage) of RSRZ outliers, followed by percent RSRZ outliers for the chain as percentile scores relative to all X-ray entries and entries of similar resolution. The OWAB column contains the minimum, median, 95<sup>th</sup> percentile and maximum values of the occupancy-weighted average B-factor per residue. The column labelled ‘Q< 0.9’ lists the number of (and percentage) of residues with an average occupancy less than 0.9.

Mol	Chain	Analysed	<RSRZ>	#RSRZ>2	OWAB(Å <sup>2</sup> )	Q<0.9
1	A	262/262 (100%)	-0.21	1 (0%) 92 93	4, 8, 16, 24	0
1	B	262/262 (100%)	-0.27	2 (0%) 86 88	4, 7, 16, 24	0
1	C	262/262 (100%)	-0.25	2 (0%) 86 88	4, 7, 16, 24	0
1	D	262/262 (100%)	-0.27	1 (0%) 92 93	3, 8, 16, 23	0
All	All	1048/1048 (100%)	-0.25	6 (0%) 89 91	3, 7, 16, 24	0

The worst 5 of 6 RSRZ outliers are listed below:

Mol	Chain	Res	Type	RSRZ
1	D	246	PHE	3.4
1	B	246	PHE	3.0
1	C	246	PHE	3.0
1	A	62	MET	2.5
1	B	183	ILE	2.2

### 6.2 Non-standard residues in protein, DNA, RNA chains [i](#)

There are no non-standard protein/DNA/RNA residues in this entry.

### 6.3 Carbohydrates [i](#)

There are no carbohydrates in this entry.

### 6.4 Ligands [i](#)

In the following table, the Atoms column lists the number of modelled atoms in the group and the number defined in the chemical component dictionary. The B-factors column lists the minimum, median, 95<sup>th</sup> percentile and maximum values of B factors of atoms in the group. The column labelled ‘Q< 0.9’ lists the number of atoms with occupancy less than 0.9.

Mol	Type	Chain	Res	Atoms	RSCC	RSR	B-factors( $\text{\AA}^2$ )	Q<0.9
4	GOL	C	1410	6/6	0.59	0.24	58,59,59,59	0
6	VAL	D	502	8/8	0.71	0.21	32,34,35,35	0
6	VAL	C	502	8/8	0.71	0.26	33,35,35,35	0
6	VAL	B	502	8/8	0.72	0.18	32,32,33,33	0
5	ARG	B	501	11/12	0.72	0.21	29,31,32,33	0
6	VAL	A	502	8/8	0.77	0.21	30,31,32,32	0
4	GOL	B	1406	6/6	0.77	0.19	21,27,28,29	0
5	ARG	C	501	11/12	0.77	0.17	22,28,32,32	0
5	ARG	D	501	11/12	0.79	0.17	21,28,31,31	0
4	GOL	C	1403	6/6	0.83	0.15	25,32,32,33	0
4	GOL	C	1407	6/6	0.84	0.16	21,26,26,28	0
5	ARG	A	501	11/12	0.85	0.16	20,25,28,29	0
4	GOL	C	1408	6/6	0.86	0.19	20,26,26,26	0
4	GOL	C	1402	6/6	0.90	0.14	10,21,23,26	0
4	GOL	B	1405	6/6	0.91	0.13	10,21,23,26	0
4	GOL	A	1404	6/6	0.91	0.11	9,18,21,22	0
4	GOL	D	1409	6/6	0.93	0.11	10,19,22,23	0
3	CA	A	998	1/1	0.99	0.06	6,6,6,6	0
2	ZN	A	999	1/1	1.00	0.05	6,6,6,6	0
3	CA	A	997	1/1	1.00	0.06	7,7,7,7	0
3	CA	B	1401	1/1	1.00	0.04	4,4,4,4	1
2	ZN	B	999	1/1	1.00	0.06	6,6,6,6	0
2	ZN	C	999	1/1	1.00	0.06	6,6,6,6	0
3	CA	D	997	1/1	1.00	0.05	7,7,7,7	0
3	CA	A	1401	1/1	1.00	0.04	6,6,6,6	0
3	CA	D	1401	1/1	1.00	0.04	5,5,5,5	1
3	CA	B	998	1/1	1.00	0.06	5,5,5,5	0
2	ZN	D	999	1/1	1.00	0.06	5,5,5,5	0
3	CA	C	997	1/1	1.00	0.07	6,6,6,6	0
3	CA	C	998	1/1	1.00	0.06	5,5,5,5	0
3	CA	B	997	1/1	1.00	0.07	5,5,5,5	0
3	CA	D	998	1/1	1.00	0.06	5,5,5,5	0

## 6.5 Other polymers

There are no such residues in this entry.