



# Full wwPDB X-ray Structure Validation Report ⓘ

Mar 9, 2018 – 02:46 am GMT

PDB ID : 4LXJ  
Title : Saccharomyces cerevisiae lanosterol 14-alpha demethylase with lanosterol bound  
Authors : Monk, B.C.; Tomasiak, T.M.; Keniya, M.V.; Huschmann, F.U.; Tyndall, J.D.A.; O'Connell III, J.D.; Cannon, R.D.; McDonald, J.; Rodriguez, A.; Finer-Moore, J.; Stroud, R.M.  
Deposited on : 2013-07-29  
Resolution : 1.90 Å(reported)

This is a Full wwPDB X-ray Structure Validation Report for a publicly released PDB entry.

We welcome your comments at [validation@mail.wwpdb.org](mailto:validation@mail.wwpdb.org)

A user guide is available at

<https://www.wwpdb.org/validation/2017/XrayValidationReportHelp>

with specific help available everywhere you see the ⓘ symbol.

---

The following versions of software and data (see [references ⓘ](#)) were used in the production of this report:

MolProbity : 4.02b-467  
Mogul : 1.7.3 (157068), CSD as539be (2018)  
Xtriage (Phenix) : 1.13  
EDS : trunk30967  
Percentile statistics : 20171227.v01 (using entries in the PDB archive December 27th 2017)  
Refmac : 5.8.0158  
CCP4 : 7.0 (Gargrove)  
Ideal geometry (proteins) : Engh & Huber (2001)  
Ideal geometry (DNA, RNA) : Parkinson et al. (1996)  
Validation Pipeline (wwPDB-VP) : trunk30967

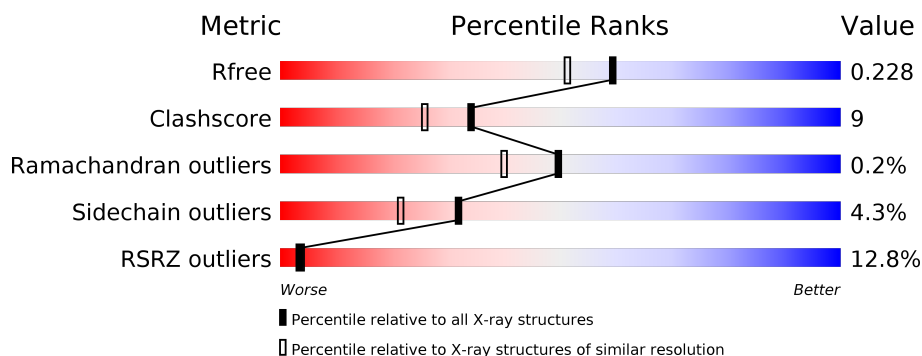
# 1 Overall quality at a glance

The following experimental techniques were used to determine the structure:

*X-RAY DIFFRACTION*


The reported resolution of this entry is 1.90 Å.

Percentile scores (ranging between 0-100) for global validation metrics of the entry are shown in the following graphic. The table shows the number of entries on which the scores are based.



Metric	Whole archive (#Entries)	Similar resolution (#Entries, resolution range(Å))
$R_{free}$	111664	5502 (1.90-1.90)
Clashscore	122126	6115 (1.90-1.90)
Ramachandran outliers	120053	6048 (1.90-1.90)
Sidechain outliers	120020	6048 (1.90-1.90)
RSRZ outliers	108989	5379 (1.90-1.90)

The table below summarises the geometric issues observed across the polymeric chains and their fit to the electron density. The red, orange, yellow and green segments on the lower bar indicate the fraction of residues that contain outliers for  $\geq 3$ , 2, 1 and 0 types of geometric quality criteria. A grey segment represents the fraction of residues that are not modelled. The numeric value for each fraction is indicated below the corresponding segment, with a dot representing fractions  $\leq 5\%$ . The upper red bar (where present) indicates the fraction of residues that have poor fit to the electron density. The numeric value is given above the bar.

Mol	Chain	Length	Quality of chain
1	A	536	



In the tables below, the ZeroOcc column contains the number of atoms modelled with zero occupancy, the AltConf column contains the number of residues with at least one atom in alternate conformation and the Trace column contains the number of residues modelled with at most 2 atoms.

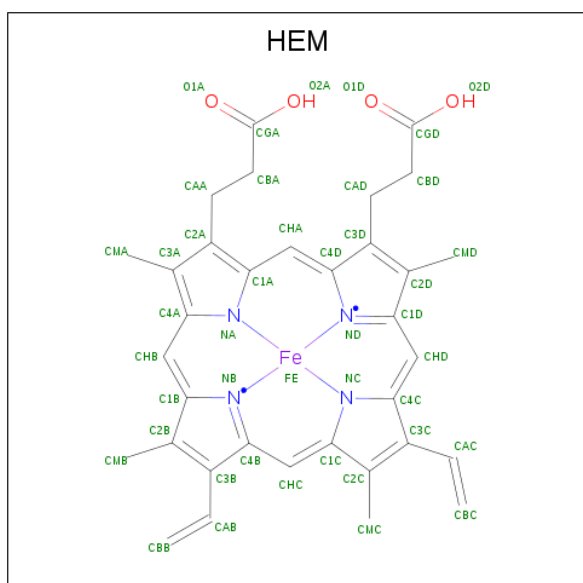
- Molecule 1 is a protein called Lanosterol 14-alpha demethylase.

Mol	Chain	Residues	Atoms					ZeroOcc	AltConf	Trace
1	A	530	Total	C	N	O	S	0	0	0
			4287	2775	726	765	21			

There are 7 discrepancies between the modelled and reference sequences:

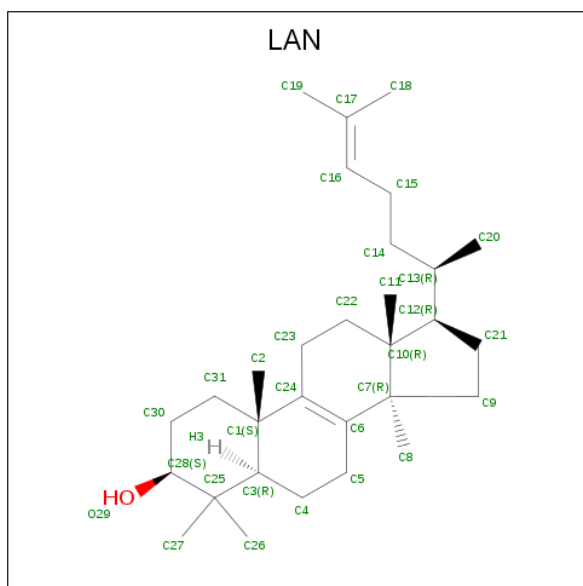
Chain	Residue	Modelled	Actual	Comment	Reference
A	433	ASN	LYS	CONFLICT	UNP P10614
A	531	GLY	-	EXPRESSION TAG	UNP P10614
A	532	GLY	-	EXPRESSION TAG	UNP P10614
A	533	ARG	-	EXPRESSION TAG	UNP P10614
A	534	HIS	-	EXPRESSION TAG	UNP P10614
A	535	HIS	-	EXPRESSION TAG	UNP P10614
A	536	HIS	-	EXPRESSION TAG	UNP P10614

- Molecule 2 is PROTOPORPHYRIN IX CONTAINING FE (three-letter code: HEM) (formula:  $C_{34}H_{32}FeN_4O_4$ ).



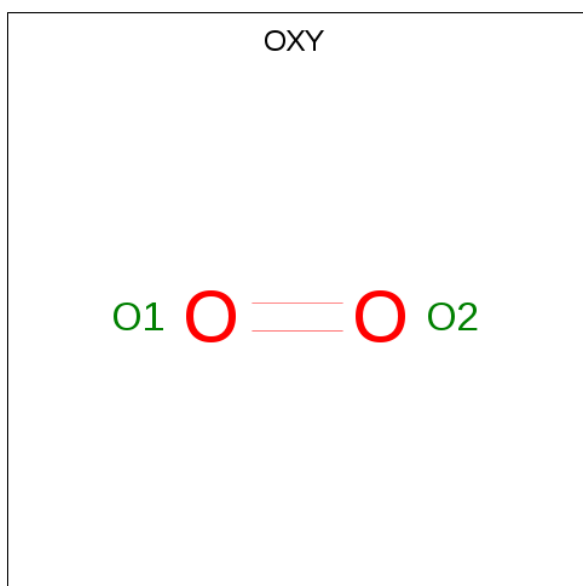
Mol	Chain	Residues	Atoms				ZeroOcc	AltConf
2	A	1	Total	C	Fe	N	O	
			43	34	1	4	4	
							0	0

- Molecule 3 is LANOSTEROL (three-letter code: LAN) (formula:  $C_{30}H_{50}O$ ).



Mol	Chain	Residues	Atoms		ZeroOcc	AltConf
3	A	1	Total	C O		
			31	30 1	0	0

- Molecule 4 is OXYGEN MOLECULE (three-letter code: OXY) (formula:  $O_2$ ).



Mol	Chain	Residues	Atoms		ZeroOcc	AltConf
4	A	1	Total	O	0	0
			2	2		

- Molecule 5 is water.

Mol	Chain	Residues	Atoms		ZeroOcc	AltConf
5	A	182	Total	O	0	0
			182	182		



## 4 Data and refinement statistics

Property	Value	Source
Space group	P 1 21 1	Depositor
Cell constants a, b, c, $\alpha$ , $\beta$ , $\gamma$	78.21Å 67.00Å 80.38Å 90.00° 99.54° 90.00°	Depositor
Resolution (Å)	29.33 – 1.90 29.67 – 1.90	Depositor EDS
% Data completeness (in resolution range)	96.5 (29.33-1.90) 96.5 (29.67-1.90)	Depositor EDS
$R_{merge}$	0.04	Depositor
$R_{sym}$	(Not available)	Depositor
$\langle I/\sigma(I) \rangle$ <sup>1</sup>	1.74 (at 1.91Å)	Xtriage
Refinement program	PHENIX (phenix.refine: 1.8_1069)	Depositor
R, $R_{free}$	0.195 , 0.227 0.196 , 0.228	Depositor DCC
$R_{free}$ test set	3119 reflections (4.99%)	wwPDB-VP
Wilson B-factor (Å <sup>2</sup> )	36.8	Xtriage
Anisotropy	0.598	Xtriage
Bulk solvent $k_{sol}$ (e/Å <sup>3</sup> ), $B_{sol}$ (Å <sup>2</sup> )	0.39 , 60.2	EDS
L-test for twinning <sup>2</sup>	$\langle  L  \rangle = 0.50$ , $\langle L^2 \rangle = 0.34$	Xtriage
Estimated twinning fraction	0.012 for l,-k,h	Xtriage
$F_o, F_c$ correlation	0.96	EDS
Total number of atoms	4545	wwPDB-VP
Average B, all atoms (Å <sup>2</sup> )	48.0	wwPDB-VP

Xtriage's analysis on translational NCS is as follows: *The largest off-origin peak in the Patterson function is 5.47% of the height of the origin peak. No significant pseudotranslation is detected.*

<sup>1</sup>Intensities estimated from amplitudes.

<sup>2</sup>Theoretical values of  $\langle |L| \rangle$ ,  $\langle L^2 \rangle$  for acentric reflections are 0.5, 0.333 respectively for untwinned datasets, and 0.375, 0.2 for perfectly twinned datasets.

## 5 Model quality [i](#)

### 5.1 Standard geometry [i](#)

Bond lengths and bond angles in the following residue types are not validated in this section: HEM, LAN, OXY

The Z score for a bond length (or angle) is the number of standard deviations the observed value is removed from the expected value. A bond length (or angle) with  $|Z| > 5$  is considered an outlier worth inspection. RMSZ is the root-mean-square of all Z scores of the bond lengths (or angles).

Mol	Chain	Bond lengths		Bond angles	
		RMSZ	$\# Z  > 5$	RMSZ	$\# Z  > 5$
1	A	0.53	0/4406	0.67	2/5969 (0.0%)

There are no bond length outliers.

All (2) bond angle outliers are listed below:

Mol	Chain	Res	Type	Atoms	Z	Observed(°)	Ideal(°)
1	A	489	ARG	NE-CZ-NH2	-9.97	115.31	120.30
1	A	489	ARG	NE-CZ-NH1	8.20	124.40	120.30

There are no chirality outliers.

There are no planarity outliers.

### 5.2 Too-close contacts [i](#)

In the following table, the Non-H and H(model) columns list the number of non-hydrogen atoms and hydrogen atoms in the chain respectively. The H(added) column lists the number of hydrogen atoms added and optimized by MolProbity. The Clashes column lists the number of clashes within the asymmetric unit, whereas Symm-Clashes lists symmetry related clashes.

Mol	Chain	Non-H	H(model)	H(added)	Clashes	Symm-Clashes
1	A	4287	0	4271	75	0
2	A	43	0	30	3	0
3	A	31	0	50	19	0
4	A	2	0	0	0	0
5	A	182	0	0	2	0
All	All	4545	0	4351	79	0

The all-atom clashscore is defined as the number of clashes found per 1000 atoms (including hydrogen atoms). The all-atom clashscore for this structure is 9.



All (79) close contacts within the same asymmetric unit are listed below, sorted by their clash magnitude.

Atom-1	Atom-2	Interatomic distance (Å)	Clash overlap (Å)
1:A:246:LEU:CD1	1:A:248:LEU:HG	1.86	1.06
1:A:246:LEU:HD13	1:A:248:LEU:HG	1.46	0.95
1:A:247:PRO:O	1:A:248:LEU:HD23	1.69	0.92
1:A:247:PRO:C	1:A:248:LEU:HD23	1.94	0.88
1:A:243:PHE:N	1:A:243:PHE:HD2	1.74	0.85
1:A:243:PHE:CD1	1:A:246:LEU:HD23	2.20	0.77
1:A:243:PHE:N	1:A:243:PHE:CD2	2.48	0.77
1:A:380:LEU:HD22	3:A:602:LAN:H222	1.68	0.75
1:A:246:LEU:HD12	1:A:246:LEU:O	1.89	0.73
1:A:243:PHE:HD1	1:A:246:LEU:HD23	1.55	0.68
1:A:440:SER:HB2	1:A:453:SER:HB2	1.76	0.68
1:A:494:HIS:HD2	5:A:723:HOH:O	1.76	0.67
1:A:238:PRO:HA	1:A:241:PHE:HB2	1.77	0.67
1:A:273:ARG:NH2	1:A:301:ASP:OD2	2.27	0.67
1:A:246:LEU:HD11	1:A:248:LEU:HG	1.75	0.64
1:A:236:PHE:HZ	3:A:602:LAN:H311	1.64	0.62
1:A:242:VAL:HB	1:A:243:PHE:CD2	2.35	0.61
1:A:140:TYR:CE2	3:A:602:LAN:H263	2.36	0.60
1:A:246:LEU:HD12	1:A:246:LEU:C	2.23	0.59
1:A:247:PRO:O	1:A:248:LEU:CD2	2.48	0.58
1:A:128:HIS:HD2	1:A:244:PRO:HG3	1.69	0.58
1:A:194:ILE:HD12	1:A:521:TRP:NE1	2.19	0.58
1:A:380:LEU:HD22	3:A:602:LAN:H8C2	1.85	0.58
1:A:242:VAL:HB	1:A:243:PHE:HD2	1.69	0.58
1:A:384:PHE:HE2	3:A:602:LAN:H141	1.68	0.58
1:A:236:PHE:CZ	3:A:602:LAN:H2C1	2.39	0.57
1:A:456:VAL:HG12	1:A:461:LEU:HD11	1.87	0.56
3:A:602:LAN:H182	3:A:602:LAN:H201	1.87	0.56
1:A:235:GLY:HA3	1:A:254:ARG:HD3	1.88	0.55
1:A:128:HIS:CD2	1:A:244:PRO:HG3	2.42	0.54
2:A:601:HEM:HMB2	2:A:601:HEM:HBB2	1.90	0.54
1:A:140:TYR:HE2	3:A:602:LAN:H263	1.72	0.54
1:A:242:VAL:C	1:A:243:PHE:HD2	2.12	0.53
1:A:485:SER:O	1:A:489:ARG:HD3	2.08	0.53
1:A:240:ASN:HA	1:A:243:PHE:O	2.09	0.52
1:A:194:ILE:HD12	1:A:521:TRP:HE1	1.75	0.52
1:A:236:PHE:CZ	3:A:602:LAN:H311	2.44	0.51
1:A:279:GLN:HB2	1:A:281:ARG:HG3	1.91	0.51
1:A:344:GLN:OE1	1:A:489:ARG:HD2	2.11	0.51
1:A:468:HIS:HD2	2:A:601:HEM:O2D	1.94	0.51

*Continued on next page...*

*Continued from previous page...*

Atom-1	Atom-2	Interatomic distance (Å)	Clash overlap (Å)
1:A:184:PHE:O	1:A:189:ARG:HD3	2.12	0.50
1:A:380:LEU:HD13	3:A:602:LAN:H8C2	1.94	0.50
1:A:401:PRO:HG2	1:A:404:TYR:CE1	2.46	0.50
1:A:371:LYS:HE2	1:A:431:TRP:CE3	2.48	0.49
1:A:371:LYS:HE2	1:A:431:TRP:CZ3	2.48	0.49
1:A:224:ASP:N	1:A:224:ASP:OD1	2.46	0.49
1:A:470:CYS:HA	2:A:601:HEM:C4D	2.48	0.48
1:A:36:ILE:O	1:A:40:ILE:HG12	2.14	0.48
1:A:35:ILE:O	1:A:38:PRO:HD2	2.14	0.48
1:A:509:MET:O	3:A:602:LAN:H202	2.14	0.48
1:A:61:TYR:CD2	1:A:67:GLY:HA2	2.48	0.48
3:A:602:LAN:H262	3:A:602:LAN:H2C3	1.96	0.48
3:A:602:LAN:H212	3:A:602:LAN:H141	1.60	0.47
1:A:90:ILE:HD13	1:A:393:VAL:HG11	1.96	0.47
1:A:107:LYS:HD3	5:A:778:HOH:O	2.15	0.47
1:A:155:LYS:NZ	1:A:449:PHE:O	2.29	0.46
1:A:381:HIS:NE2	3:A:602:LAN:H183	2.31	0.46
1:A:81:GLU:HG2	1:A:85:LYS:HE3	1.97	0.46
1:A:246:LEU:HD13	1:A:248:LEU:CG	2.31	0.46
1:A:236:PHE:HZ	3:A:602:LAN:H2C1	1.79	0.46
1:A:221:LEU:HD21	1:A:229:TYR:CD2	2.52	0.45
1:A:120:VAL:HB	1:A:385:ARG:HB3	1.98	0.45
1:A:339:GLU:OE2	1:A:429:HIS:CE1	2.69	0.45
1:A:221:LEU:HD21	1:A:229:TYR:CE2	2.52	0.44
1:A:236:PHE:O	1:A:509:MET:HG3	2.16	0.44
1:A:52:ARG:HH21	1:A:54:ASP:CG	2.20	0.44
1:A:176:LYS:NZ	1:A:176:LYS:HB3	2.33	0.44
1:A:380:LEU:HD13	3:A:602:LAN:C8	2.46	0.44
1:A:273:ARG:HH22	1:A:301:ASP:CG	2.19	0.43
1:A:456:VAL:O	1:A:456:VAL:HG12	2.19	0.43
1:A:34:ILE:HD12	1:A:34:ILE:HA	1.73	0.42
1:A:7:ILE:HG22	1:A:10:GLU:H	1.84	0.42
1:A:279:GLN:O	1:A:285:ASP:HB3	2.20	0.42
1:A:236:PHE:HZ	3:A:602:LAN:C31	2.32	0.42
1:A:382:SER:O	3:A:602:LAN:H211	2.19	0.41
1:A:33:LEU:HA	1:A:36:ILE:HG22	2.03	0.41
1:A:384:PHE:HE2	3:A:602:LAN:H212	1.85	0.41
1:A:233:ASP:OD2	1:A:317:HIS:HE1	2.04	0.41
1:A:238:PRO:O	1:A:242:VAL:HG23	2.20	0.41

There are no symmetry-related clashes.

## 5.3 Torsion angles [i](#)

### 5.3.1 Protein backbone [i](#)

In the following table, the Percentiles column shows the percent Ramachandran outliers of the chain as a percentile score with respect to all X-ray entries followed by that with respect to entries of similar resolution.

The Analysed column shows the number of residues for which the backbone conformation was analysed, and the total number of residues.

Mol	Chain	Analysed	Favoured	Allowed	Outliers	Percentiles	
1	A	528/536 (98%)	508 (96%)	19 (4%)	1 (0%)	49	40

All (1) Ramachandran outliers are listed below:

Mol	Chain	Res	Type
1	A	139	ILE

### 5.3.2 Protein sidechains [i](#)

In the following table, the Percentiles column shows the percent sidechain outliers of the chain as a percentile score with respect to all X-ray entries followed by that with respect to entries of similar resolution.

The Analysed column shows the number of residues for which the sidechain conformation was analysed, and the total number of residues.

Mol	Chain	Analysed	Rotameric	Outliers	Percentiles	
1	A	465/470 (99%)	445 (96%)	20 (4%)	32	21

All (20) residues with a non-rotameric sidechain are listed below:

Mol	Chain	Res	Type
1	A	6	SER
1	A	10	GLU
1	A	23	LEU
1	A	29	GLN
1	A	34	ILE
1	A	37	ILE
1	A	51	LEU
1	A	103	TYR
1	A	129	LEU
1	A	155	LYS

*Continued on next page...*

*Continued from previous page...*

Mol	Chain	Res	Type
1	A	194	ILE
1	A	224	ASP
1	A	237	THR
1	A	239	ILE
1	A	241	PHE
1	A	243	PHE
1	A	248	LEU
1	A	268	LEU
1	A	435	SER
1	A	483	LEU

Some sidechains can be flipped to improve hydrogen bonding and reduce clashes. All (1) such sidechains are listed below:

Mol	Chain	Res	Type
1	A	468	HIS

### 5.3.3 RNA [i](#)

There are no RNA molecules in this entry.

## 5.4 Non-standard residues in protein, DNA, RNA chains [i](#)

There are no non-standard protein/DNA/RNA residues in this entry.

## 5.5 Carbohydrates [i](#)

There are no carbohydrates in this entry.

## 5.6 Ligand geometry [i](#)

3 ligands are modelled in this entry.

In the following table, the Counts columns list the number of bonds (or angles) for which Mogul statistics could be retrieved, the number of bonds (or angles) that are observed in the model and the number of bonds (or angles) that are defined in the Chemical Component Dictionary. The Link column lists molecule types, if any, to which the group is linked. The Z score for a bond length (or angle) is the number of standard deviations the observed value is removed from the expected value. A bond length (or angle) with  $|Z| > 2$  is considered an outlier worth inspection. RMSZ is the root-mean-square of all Z scores of the bond lengths (or angles).

Mol	Type	Chain	Res	Link	Bond lengths			Bond angles		
					Counts	RMSZ	# Z  > 2	Counts	RMSZ	# Z  > 2
2	HEM	A	601	1,4	27,50,50	2.10	7 (25%)	17,82,82	1.53	3 (17%)
3	LAN	A	602	-	34,34,34	0.81	1 (2%)	56,56,56	1.50	10 (17%)
4	OXY	A	603	2	1,1,1	0.12	0	0,0,0	0.00	-

In the following table, the Chirals column lists the number of chiral outliers, the number of chiral centers analysed, the number of these observed in the model and the number defined in the Chemical Component Dictionary. Similar counts are reported in the Torsion and Rings columns. '-' means no outliers of that kind were identified.

Mol	Type	Chain	Res	Link	Chirals	Torsions	Rings
2	HEM	A	601	1,4	-	0/6/54/54	0/0/8/8
3	LAN	A	602	-	-	0/10/82/82	0/4/4/4
4	OXY	A	603	2	-	0/0/0/0	0/0/0/0

All (8) bond length outliers are listed below:

Mol	Chain	Res	Type	Atoms	Z	Observed(Å)	Ideal(Å)
2	A	601	HEM	C3B-C2B	-3.50	1.35	1.40
2	A	601	HEM	C3C-C2C	-3.19	1.36	1.40
3	A	602	LAN	C10-C7	-2.03	1.52	1.56
2	A	601	HEM	C1D-ND	2.41	1.41	1.36
2	A	601	HEM	CMD-C2D	2.95	1.57	1.51
2	A	601	HEM	C3C-CAC	3.55	1.54	1.47
2	A	601	HEM	C3B-CAB	3.94	1.55	1.47
2	A	601	HEM	C3D-C2D	5.02	1.52	1.37

All (13) bond angle outliers are listed below:

Mol	Chain	Res	Type	Atoms	Z	Observed(°)	Ideal(°)
3	A	602	LAN	C10-C12-C13	-3.22	115.08	119.30
3	A	602	LAN	C8-C7-C9	-2.78	103.57	113.70
3	A	602	LAN	C31-C30-C28	-2.71	107.28	111.50
3	A	602	LAN	C30-C28-C25	-2.64	110.58	113.34
2	A	601	HEM	CMA-C3A-C4A	-2.62	124.44	128.46
3	A	602	LAN	C15-C16-C17	-2.28	119.93	127.84
3	A	602	LAN	C4-C3-C1	-2.27	107.19	110.65
3	A	602	LAN	C18-C17-C19	2.01	119.12	114.59
3	A	602	LAN	C14-C13-C12	2.09	114.67	110.28
3	A	602	LAN	C10-C7-C6	2.24	114.08	110.89
2	A	601	HEM	CMC-C2C-C3C	2.49	129.41	124.88
2	A	601	HEM	C4A-C3A-C2A	2.97	109.06	107.00
3	A	602	LAN	C3-C25-C28	5.09	113.71	107.63

There are no chirality outliers.

There are no torsion outliers.

There are no ring outliers.

2 monomers are involved in 22 short contacts:

Mol	Chain	Res	Type	Clashes	Symm-Clashes
2	A	601	HEM	3	0
3	A	602	LAN	19	0

## 5.7 Other polymers [i](#)

There are no such residues in this entry.

## 5.8 Polymer linkage issues [i](#)

There are no chain breaks in this entry.

## 6 Fit of model and data ⓘ

### 6.1 Protein, DNA and RNA chains ⓘ

In the following table, the column labelled ‘#RSRZ> 2’ contains the number (and percentage) of RSRZ outliers, followed by percent RSRZ outliers for the chain as percentile scores relative to all X-ray entries and entries of similar resolution. The OWAB column contains the minimum, median, 95<sup>th</sup> percentile and maximum values of the occupancy-weighted average B-factor per residue. The column labelled ‘Q< 0.9’ lists the number of (and percentage) of residues with an average occupancy less than 0.9.

Mol	Chain	Analysed	<RSRZ>	#RSRZ>2	OWAB(Å <sup>2</sup> )	Q<0.9
1	A	530/536 (98%)	0.61	68 (12%) 3 4	28, 45, 78, 92	0

All (68) RSRZ outliers are listed below:

Mol	Chain	Res	Type	RSRZ
1	A	439	TYR	9.5
1	A	248	LEU	8.3
1	A	535	HIS	8.0
1	A	247	PRO	7.3
1	A	8	VAL	6.2
1	A	244	PRO	6.2
1	A	6	SER	5.6
1	A	246	LEU	5.2
1	A	227	TYR	5.2
1	A	7	ILE	5.1
1	A	276	ASN	4.9
1	A	34	ILE	4.6
1	A	534	HIS	4.5
1	A	41	TYR	4.5
1	A	252	ARG	4.4
1	A	31	ILE	4.4
1	A	312	LEU	4.4
1	A	441	VAL	4.2
1	A	30	ARG	4.2
1	A	51	LEU	4.1
1	A	27	LEU	3.9
1	A	243	PHE	3.9
1	A	11	ALA	3.7
1	A	249	GLU	3.7
1	A	28	ALA	3.6
1	A	47	LEU	3.3
1	A	9	GLY	3.2

*Continued on next page...*

*Continued from previous page...*

Mol	Chain	Res	Type	RSRZ
1	A	22	PHE	3.2
1	A	250	HIS	3.1
1	A	33	LEU	3.1
1	A	383	LEU	3.0
1	A	48	LEU	2.9
1	A	480	LEU	2.9
1	A	239	ILE	2.9
1	A	53	LYS	2.8
1	A	380	LEU	2.8
1	A	274	LYS	2.8
1	A	245	ASN	2.8
1	A	37	ILE	2.8
1	A	45	TRP	2.8
1	A	407	LEU	2.7
1	A	318	THR	2.7
1	A	440	SER	2.6
1	A	319	SER	2.6
1	A	498	GLY	2.5
1	A	311	VAL	2.5
1	A	476	ALA	2.5
1	A	29	GLN	2.5
1	A	320	ALA	2.4
1	A	315	GLY	2.3
1	A	314	GLY	2.3
1	A	224	ASP	2.3
1	A	102	VAL	2.2
1	A	442	GLY	2.2
1	A	182	LYS	2.2
1	A	208	ALA	2.1
1	A	323	SER	2.1
1	A	280	ASP	2.1
1	A	408	VAL	2.1
1	A	23	LEU	2.1
1	A	308	LEU	2.1
1	A	443	GLU	2.1
1	A	14	TYR	2.1
1	A	160	LYS	2.0
1	A	52	ARG	2.0
1	A	451	ALA	2.0
1	A	307	LEU	2.0
1	A	483	LEU	2.0



## 6.2 Non-standard residues in protein, DNA, RNA chains [i](#)

There are no non-standard protein/DNA/RNA residues in this entry.

## 6.3 Carbohydrates [i](#)

There are no carbohydrates in this entry.

## 6.4 Ligands [i](#)

In the following table, the Atoms column lists the number of modelled atoms in the group and the number defined in the chemical component dictionary. The B-factors column lists the minimum, median, 95<sup>th</sup> percentile and maximum values of B factors of atoms in the group. The column labelled 'Q< 0.9' lists the number of atoms with occupancy less than 0.9.

Mol	Type	Chain	Res	Atoms	RSCC	RSR	B-factors( $\text{\AA}^2$ )	Q<0.9
3	LAN	A	602	31/31	0.83	0.26	55,66,70,73	0
4	OXY	A	603	2/2	0.90	0.23	43,43,43,51	0
2	HEM	A	601	43/43	0.98	0.19	30,34,38,44	0

## 6.5 Other polymers [i](#)

There are no such residues in this entry.