



Full wwPDB X-ray Structure Validation Report ⓘ

Mar 10, 2018 – 04:38 am GMT

PDB ID : 4LXX
Title : Crystal structure WlaRD, a sugar 3N-formyl transferase in the presence of dTDP-Fuc3Nfo and 5-N-Formyl-THF
Authors : thoden, J.B.; goneau, M.-F.; gilbert, M.; holden, H.M.
Deposited on : 2013-07-30
Resolution : 1.45 Å(reported)

This is a Full wwPDB X-ray Structure Validation Report for a publicly released PDB entry.

We welcome your comments at validation@mail.wwpdb.org

A user guide is available at

<https://www.wwpdb.org/validation/2017/XrayValidationReportHelp>

with specific help available everywhere you see the ⓘ symbol.

The following versions of software and data (see [references ⓘ](#)) were used in the production of this report:

MolProbity : 4.02b-467
Mogul : 1.7.3 (157068), CSD as539be (2018)
Xtriage (Phenix) : 1.13
EDS : trunk30967
Percentile statistics : 20171227.v01 (using entries in the PDB archive December 27th 2017)
Refmac : 5.8.0158
CCP4 : 7.0 (Gargrove)
Ideal geometry (proteins) : Engh & Huber (2001)
Ideal geometry (DNA, RNA) : Parkinson et al. (1996)
Validation Pipeline (wwPDB-VP) : trunk30967

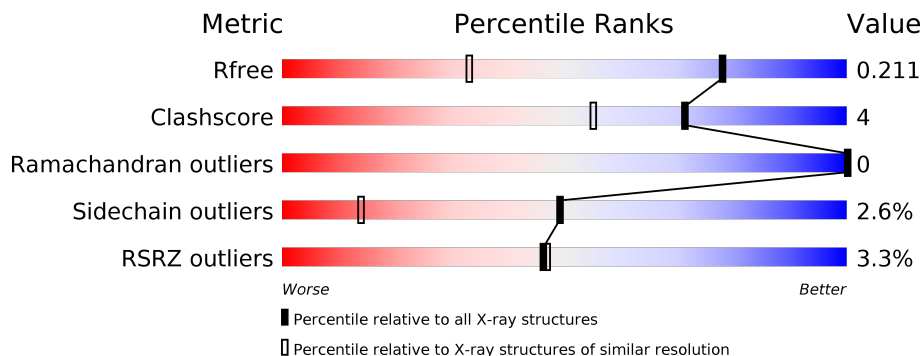
1 Overall quality at a glance

The following experimental techniques were used to determine the structure:

X-RAY DIFFRACTION

The reported resolution of this entry is 1.45 Å.

Percentile scores (ranging between 0-100) for global validation metrics of the entry are shown in the following graphic. The table shows the number of entries on which the scores are based.



Metric	Whole archive (#Entries)	Similar resolution (#Entries, resolution range(Å))
R_{free}	111664	1761 (1.48-1.44)
Clashscore	122126	1816 (1.48-1.44)
Ramachandran outliers	120053	1793 (1.48-1.44)
Sidechain outliers	120020	1793 (1.48-1.44)
RSRZ outliers	108989	1733 (1.48-1.44)

The table below summarises the geometric issues observed across the polymeric chains and their fit to the electron density. The red, orange, yellow and green segments on the lower bar indicate the fraction of residues that contain outliers for ≥ 3 , 2, 1 and 0 types of geometric quality criteria. A grey segment represents the fraction of residues that are not modelled. The numeric value for each fraction is indicated below the corresponding segment, with a dot representing fractions $\leq 5\%$. The upper red bar (where present) indicates the fraction of residues that have poor fit to the electron density. The numeric value is given above the bar.

Mol	Chain	Length	Quality of chain
1	A	274	<div> <div>2%</div> <div> <div></div> <div>93%</div> <div>6%</div> </div> </div>
1	B	274	<div> <div>5%</div> <div> <div></div> <div>90%</div> <div>10%</div> </div> </div>

2 Entry composition [i](#)

There are 7 unique types of molecules in this entry. The entry contains 5600 atoms, of which 0 are hydrogens and 0 are deuteriums.

In the tables below, the ZeroOcc column contains the number of atoms modelled with zero occupancy, the AltConf column contains the number of residues with at least one atom in alternate conformation and the Trace column contains the number of residues modelled with at most 2 atoms.

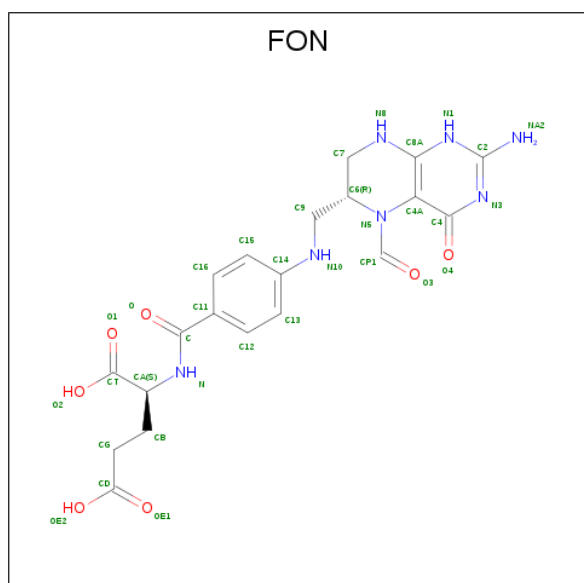
- Molecule 1 is a protein called WlaRD, a sugar 3N-formyl transferase.

Mol	Chain	Residues	Atoms					ZeroOcc	AltConf	Trace
1	A	273	Total	C	N	O	S	0	15	0
			2327	1530	375	419	3			
1	B	274	Total	C	N	O	S	0	8	0
			2298	1499	375	421	3			

There are 4 discrepancies between the modelled and reference sequences:

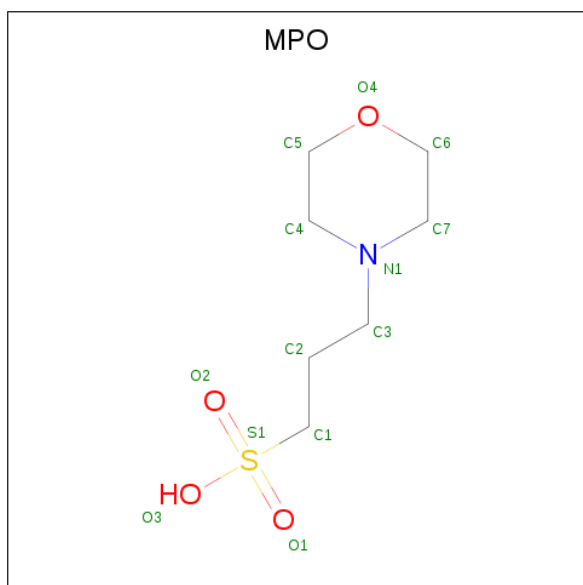
Chain	Residue	Modelled	Actual	Comment	Reference
A	-1	GLY	-	EXPRESSION TAG	UNP A8FMJ3
A	0	HIS	-	EXPRESSION TAG	UNP A8FMJ3
B	-1	GLY	-	EXPRESSION TAG	UNP A8FMJ3
B	0	HIS	-	EXPRESSION TAG	UNP A8FMJ3

- Molecule 2 is N-{[4-({[(6R)-2-amino-5-formyl-4-oxo-1,4,5,6,7,8-hexahydropteridin-6-yl]methyl}amino)phenyl]carbonyl}-L-glutamic acid (three-letter code: FON) (formula: C₂₀H₂₃N₇O₇).



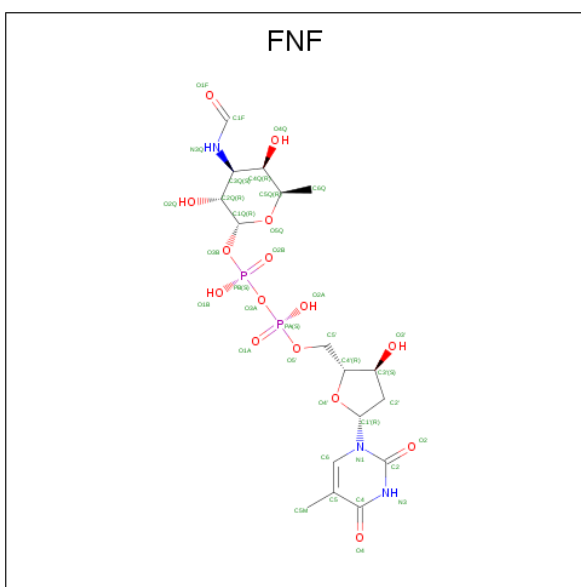
Mol	Chain	Residues	Atoms				ZeroOcc	AltConf
2	A	1	Total	C	N	O	0	0
			34	20	7	7		
2	B	1	Total	C	N	O	0	0
			34	20	7	7		

- Molecule 3 is 3[N-MORPHOLINO]PROPANE SULFONIC ACID (three-letter code: MPO) (formula: $C_7H_{15}NO_4S$).



Mol	Chain	Residues	Atoms					ZeroOcc	AltConf
3	A	1	Total	C	N	O	S	0	0
			13	7	1	4	1		
3	A	1	Total	C	N	O	S	0	0
			13	7	1	4	1		
3	B	1	Total	C	N	O	S	0	0
			13	7	1	4	1		
3	B	1	Total	C	N	O	S	0	0
			13	7	1	4	1		

- Molecule 4 is (2R,3R,4S,5R,6R)-4-(formylamino)-3,5-dihydroxy-6-methyltetrahydro-2H-pyran-2-yl [(2R,3S,5R)-3-hydroxy-5-(5-methyl-2,4-dioxo-3,4-dihydropyrimidin-1(2H)-yl)tetrahydrofuran-2-yl]methyl dihydrogen diphosphate (non-preferred name) (three-letter code: FNF) (formula: $C_{17}H_{27}N_3O_{15}P_2$).

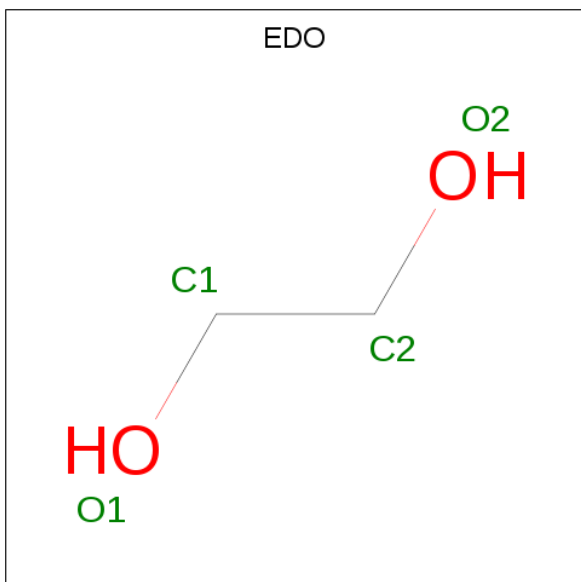


Mol	Chain	Residues	Atoms					ZeroOcc	AltConf
4	A	1	Total 37	C 17	N 3	O 15	P 2	0	0
4	B	1	Total 37	C 17	N 3	O 15	P 2	0	0

- Molecule 5 is CHLORIDE ION (three-letter code: CL) (formula: Cl).

Mol	Chain	Residues	Atoms	ZeroOcc	AltConf
5	A	1	Total Cl 1 1	0	0

- Molecule 6 is 1,2-ETHANEDIOL (three-letter code: EDO) (formula: $\text{C}_2\text{H}_6\text{O}_2$).



Mol	Chain	Residues	Atoms	ZeroOcc	AltConf
6	B	1	Total C O 4 2 2	0	0
6	B	1	Total C O 4 2 2	0	0
6	B	1	Total C O 4 2 2	0	0
6	B	1	Total C O 4 2 2	0	0

- Molecule 7 is water.

Mol	Chain	Residues	Atoms	ZeroOcc	AltConf
7	A	425	Total O 425 425	0	0
7	B	339	Total O 339 339	0	0

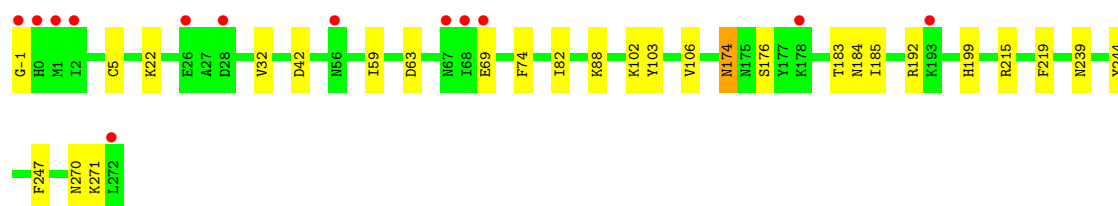
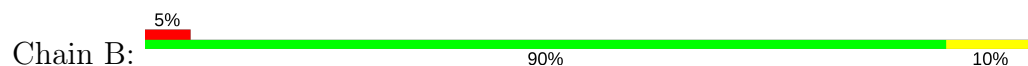
3 Residue-property plots [i](#)

These plots are drawn for all protein, RNA and DNA chains in the entry. The first graphic for a chain summarises the proportions of the various outlier classes displayed in the second graphic. The second graphic shows the sequence view annotated by issues in geometry and electron density. Residues are color-coded according to the number of geometric quality criteria for which they contain at least one outlier: green = 0, yellow = 1, orange = 2 and red = 3 or more. A red dot above a residue indicates a poor fit to the electron density ($RSRZ > 2$). Stretches of 2 or more consecutive residues without any outlier are shown as a green connector. Residues present in the sample, but not in the model, are shown in grey.

- Molecule 1: WlaRD, a sugar 3N-formyl transferase



- Molecule 1: WlaRD, a sugar 3N-formyl transferase



4 Data and refinement statistics

Property	Value	Source
Space group	C 1 2 1	Depositor
Cell constants a, b, c, α , β , γ	96.99Å 64.83Å 134.80Å 90.00° 110.60° 90.00°	Depositor
Resolution (Å)	30.00 – 1.45 29.90 – 1.45	Depositor EDS
% Data completeness (in resolution range)	94.4 (30.00-1.45) 94.4 (29.90-1.45)	Depositor EDS
R_{merge}	0.07	Depositor
R_{sym}	0.07	Depositor
$\langle I/\sigma(I) \rangle$ ¹	10.10 (at 1.45Å)	Xtriage
Refinement program	REFMAC 5.5.0109	Depositor
R, R_{free}	0.181 , 0.212 0.181 , 0.211	Depositor DCC
R_{free} test set	6551 reflections (5.02%)	wwPDB-VP
Wilson B-factor (Å ²)	14.5	Xtriage
Anisotropy	0.044	Xtriage
Bulk solvent k_{sol} (e/Å ³), B_{sol} (Å ²)	0.36 , 46.5	EDS
L-test for twinning ²	$\langle L \rangle = 0.49$, $\langle L^2 \rangle = 0.32$	Xtriage
Estimated twinning fraction	0.012 for h,-k,-h-l	Xtriage
F_o, F_c correlation	0.96	EDS
Total number of atoms	5600	wwPDB-VP
Average B, all atoms (Å ²)	19.0	wwPDB-VP

Xtriage's analysis on translational NCS is as follows: *The largest off-origin peak in the Patterson function is 4.70% of the height of the origin peak. No significant pseudotranslation is detected.*

¹Intensities estimated from amplitudes.

²Theoretical values of $\langle |L| \rangle$, $\langle L^2 \rangle$ for acentric reflections are 0.5, 0.333 respectively for untwinned datasets, and 0.375, 0.2 for perfectly twinned datasets.

5 Model quality

5.1 Standard geometry

Bond lengths and bond angles in the following residue types are not validated in this section: MPO, FON, FNF, EDO, CL

The Z score for a bond length (or angle) is the number of standard deviations the observed value is removed from the expected value. A bond length (or angle) with $|Z| > 5$ is considered an outlier worth inspection. RMSZ is the root-mean-square of all Z scores of the bond lengths (or angles).

Mol	Chain	Bond lengths		Bond angles	
		RMSZ	$\# Z > 5$	RMSZ	$\# Z > 5$
1	A	0.63	0/2418	0.83	1/3259 (0.0%)
1	B	0.58	0/2368	0.82	2/3193 (0.1%)
All	All	0.61	0/4786	0.82	3/6452 (0.0%)

Chiral center outliers are detected by calculating the chiral volume of a chiral center and verifying if the center is modelled as a planar moiety or with the opposite hand. A planarity outlier is detected by checking planarity of atoms in a peptide group, atoms in a mainchain group or atoms of a sidechain that are expected to be planar.

Mol	Chain	#Chirality outliers	#Planarity outliers
1	B	0	1

There are no bond length outliers.

All (3) bond angle outliers are listed below:

Mol	Chain	Res	Type	Atoms	Z	Observed($^{\circ}$)	Ideal($^{\circ}$)
1	B	215	ARG	NE-CZ-NH1	6.38	123.49	120.30
1	A	28	ASP	CB-CG-OD1	5.99	123.69	118.30
1	B	5	CYS	CA-CB-SG	5.77	124.38	114.00

There are no chirality outliers.

All (1) planarity outliers are listed below:

Mol	Chain	Res	Type	Group
1	B	-1	GLY	Peptide

5.2 Too-close contacts ⓘ

In the following table, the Non-H and H(model) columns list the number of non-hydrogen atoms and hydrogen atoms in the chain respectively. The H(added) column lists the number of hydrogen atoms added and optimized by MolProbity. The Clashes column lists the number of clashes within the asymmetric unit, whereas Symm-Clashes lists symmetry related clashes.

Mol	Chain	Non-H	H(model)	H(added)	Clashes	Symm-Clashes
1	A	2327	0	2417	12	0
1	B	2298	0	2342	21	0
2	A	34	0	21	1	0
2	B	34	0	21	1	0
3	A	26	0	30	1	0
3	B	26	0	30	3	0
4	A	37	0	25	1	0
4	B	37	0	25	0	0
5	A	1	0	0	0	0
6	B	16	0	24	2	0
7	A	425	0	0	3	0
7	B	339	0	0	8	0
All	All	5600	0	4935	37	0

The all-atom clashscore is defined as the number of clashes found per 1000 atoms (including hydrogen atoms). The all-atom clashscore for this structure is 4.

All (37) close contacts within the same asymmetric unit are listed below, sorted by their clash magnitude.

Atom-1	Atom-2	Interatomic distance (Å)	Clash overlap (Å)
3:B:302:MPO:H41	7:B:630:HOH:O	1.66	0.93
4:A:304:FNF:H1	7:A:569:HOH:O	1.76	0.85
1:B:271:LYS:HE3	7:B:631:HOH:O	1.75	0.84
1:A:82:ILE:H	2:A:301:FON:HN1	1.28	0.81
1:A:83[A]:LYS:NZ	7:A:442:HOH:O	2.15	0.80
1:B:183[A]:THR:HG22	1:B:185[A]:ILE:H	1.51	0.75
1:B:82:ILE:H	2:B:301:FON:HN1	1.31	0.74
1:A:183[B]:THR:HG21	7:A:561:HOH:O	1.90	0.72
1:A:2[B]:ILE:HD12	1:A:31:VAL:HG13	1.84	0.59
1:A:20[B]:ILE:HD11	1:A:30:ILE:CD1	2.33	0.58
1:B:239[A]:ASN:ND2	7:B:658:HOH:O	2.37	0.58
1:B:183[A]:THR:HG22	1:B:184:ASN:N	2.19	0.57
1:B:32:VAL:CG2	1:B:59:ILE:CD1	2.82	0.57
1:B:42:ASP:OD2	7:B:651:HOH:O	2.17	0.56
1:B:174[A]:ASN:ND2	1:B:176:SER:OG	2.40	0.53

Continued on next page...

Continued from previous page...

Atom-1	Atom-2	Interatomic distance (Å)	Clash overlap (Å)
1:B:32:VAL:HG23	1:B:59:ILE:HD12	1.93	0.48
1:A:244:TYR:OH	3:B:303:MPO:H12	2.13	0.47
3:A:303:MPO:H12	1:B:244:TYR:OH	2.13	0.47
1:B:247:PHE:CD1	3:B:302:MPO:H71	2.50	0.47
1:B:32:VAL:CG2	1:B:59:ILE:HD13	2.46	0.46
1:B:106:VAL:HG21	1:B:192:ARG:HG2	1.98	0.46
1:B:183[A]:THR:CG2	1:B:184:ASN:N	2.79	0.45
1:A:193:LYS:HA	1:A:193:LYS:HD3	1.65	0.45
1:B:102:LYS:HB3	1:B:103:TYR:CD2	2.52	0.44
1:A:84[B]:ILE:HD12	1:A:85:GLU:N	2.33	0.43
1:B:32:VAL:CG2	1:B:59:ILE:HD12	2.49	0.42
1:B:69:GLU:HB3	7:B:661:HOH:O	2.19	0.42
6:B:306:EDO:H22	7:B:459:HOH:O	2.20	0.42
1:B:199:HIS:HB3	7:B:591:HOH:O	2.19	0.42
1:A:106:VAL:HG21	1:A:192:ARG:HG2	2.03	0.41
6:B:308:EDO:H12	7:B:420:HOH:O	2.21	0.40

There are no symmetry-related clashes.

5.3 Torsion angles ⓘ

5.3.1 Protein backbone ⓘ

In the following table, the Percentiles column shows the percent Ramachandran outliers of the chain as a percentile score with respect to all X-ray entries followed by that with respect to entries of similar resolution.

The Analysed column shows the number of residues for which the backbone conformation was analysed, and the total number of residues.

Mol	Chain	Analysed	Favoured	Allowed	Outliers	Percentiles	
1	A	286/274 (104%)	277 (97%)	9 (3%)	0	100	100
1	B	280/274 (102%)	273 (98%)	7 (2%)	0	100	100
All	All	566/548 (103%)	550 (97%)	16 (3%)	0	100	100

There are no Ramachandran outliers to report.

5.3.2 Protein sidechains ⓘ

In the following table, the Percentiles column shows the percent sidechain outliers of the chain as a percentile score with respect to all X-ray entries followed by that with respect to entries of similar resolution.

The Analysed column shows the number of residues for which the sidechain conformation was analysed, and the total number of residues.

Mol	Chain	Analysed	Rotameric	Outliers	Percentiles	
1	A	268/254 (106%)	261 (97%)	7 (3%)	49	14
1	B	262/254 (103%)	254 (97%)	8 (3%)	43	10
All	All	530/508 (104%)	515 (97%)	15 (3%)	49	11

All (15) residues with a non-rotameric sidechain are listed below:

Mol	Chain	Res	Type
1	A	74	PHE
1	A	119	GLU
1	A	193	LYS
1	A	219	PHE
1	A	239[A]	ASN
1	A	239[B]	ASN
1	A	271	LYS
1	B	22	LYS
1	B	63	ASP
1	B	74	PHE
1	B	88	LYS
1	B	174[A]	ASN
1	B	174[B]	ASN
1	B	219	PHE
1	B	270	ASN

Some sidechains can be flipped to improve hydrogen bonding and reduce clashes. All (7) such sidechains are listed below:

Mol	Chain	Res	Type
1	A	18	GLN
1	A	80	GLN
1	A	94	ASN
1	A	170	GLN
1	A	186	ASN
1	B	80	GLN
1	B	94	ASN

5.3.3 RNA ⓘ

There are no RNA molecules in this entry.

5.4 Non-standard residues in protein, DNA, RNA chains ⓘ

There are no non-standard protein/DNA/RNA residues in this entry.

5.5 Carbohydrates ⓘ

There are no carbohydrates in this entry.

5.6 Ligand geometry ⓘ

Of 13 ligands modelled in this entry, 1 is monoatomic - leaving 12 for Mogul analysis.

In the following table, the Counts columns list the number of bonds (or angles) for which Mogul statistics could be retrieved, the number of bonds (or angles) that are observed in the model and the number of bonds (or angles) that are defined in the Chemical Component Dictionary. The Link column lists molecule types, if any, to which the group is linked. The Z score for a bond length (or angle) is the number of standard deviations the observed value is removed from the expected value. A bond length (or angle) with $|Z| > 2$ is considered an outlier worth inspection. RMSZ is the root-mean-square of all Z scores of the bond lengths (or angles).

Mol	Type	Chain	Res	Link	Bond lengths			Bond angles		
					Counts	RMSZ	# $ Z > 2$	Counts	RMSZ	# $ Z > 2$
2	FON	A	301	-	25,36,36	1.17	1 (4%)	30,50,50	2.34	7 (23%)
3	MPO	A	302	-	13,13,13	1.90	1 (7%)	16,17,17	2.36	4 (25%)
3	MPO	A	303	-	13,13,13	1.92	1 (7%)	16,17,17	2.48	6 (37%)
4	FNF	A	304	-	31,39,39	1.10	2 (6%)	42,59,59	1.54	4 (9%)
2	FON	B	301	-	25,36,36	1.20	2 (8%)	30,50,50	2.01	8 (26%)
3	MPO	B	302	-	13,13,13	2.13	1 (7%)	16,17,17	3.05	9 (56%)
3	MPO	B	303	-	13,13,13	1.96	1 (7%)	16,17,17	2.30	6 (37%)
4	FNF	B	304	-	31,39,39	1.13	2 (6%)	42,59,59	1.08	2 (4%)
6	EDO	B	305	-	3,3,3	0.53	0	2,2,2	0.31	0
6	EDO	B	306	-	3,3,3	0.55	0	2,2,2	0.04	0
6	EDO	B	307	-	3,3,3	0.58	0	2,2,2	0.33	0
6	EDO	B	308	-	3,3,3	0.62	0	2,2,2	0.23	0

In the following table, the Chirals column lists the number of chiral outliers, the number of chiral centers analysed, the number of these observed in the model and the number defined in the Chemical Component Dictionary. Similar counts are reported in the Torsion and Rings columns.

'-' means no outliers of that kind were identified.

Mol	Type	Chain	Res	Link	Chirals	Torsions	Rings
2	FON	A	301	-	-	0/18/37/37	0/2/3/3
3	MPO	A	302	-	-	0/7/15/15	0/1/1/1
3	MPO	A	303	-	-	0/7/15/15	0/1/1/1
4	FNF	A	304	-	-	0/19/56/56	0/3/3/3
2	FON	B	301	-	-	0/18/37/37	0/2/3/3
3	MPO	B	302	-	-	0/7/15/15	0/1/1/1
3	MPO	B	303	-	-	0/7/15/15	0/1/1/1
4	FNF	B	304	-	-	0/19/56/56	0/3/3/3
6	EDO	B	305	-	-	0/1/1/1	0/0/0/0
6	EDO	B	306	-	-	0/1/1/1	0/0/0/0
6	EDO	B	307	-	-	0/1/1/1	0/0/0/0
6	EDO	B	308	-	-	0/1/1/1	0/0/0/0

All (11) bond length outliers are listed below:

Mol	Chain	Res	Type	Atoms	Z	Observed(Å)	Ideal(Å)
3	B	302	MPO	C1-S1	-7.31	1.67	1.77
3	B	303	MPO	C1-S1	-6.65	1.68	1.77
3	A	302	MPO	C1-S1	-6.45	1.68	1.77
3	A	303	MPO	C1-S1	-6.38	1.68	1.77
2	B	301	FON	C4-C4A	-2.23	1.38	1.41
4	B	304	FNF	C1F-N3Q	2.82	1.43	1.33
4	A	304	FNF	C1F-N3Q	3.13	1.44	1.33
4	A	304	FNF	O4-C4	3.65	1.33	1.24
4	B	304	FNF	O4-C4	3.70	1.33	1.24
2	B	301	FON	O4-C4	4.48	1.35	1.24
2	A	301	FON	O4-C4	4.49	1.35	1.24

All (46) bond angle outliers are listed below:

Mol	Chain	Res	Type	Atoms	Z	Observed(°)	Ideal(°)
2	A	301	FON	CB-CA-N	-6.47	100.73	110.19
3	B	302	MPO	C5-C4-N1	-4.01	104.57	110.11
3	B	302	MPO	C6-C7-N1	-3.86	104.78	110.11
2	B	301	FON	CB-CA-N	-3.79	104.64	110.19
2	A	301	FON	C4A-C4-N3	-3.34	118.12	123.34
4	B	304	FNF	O3A-PB-O3B	-3.22	95.96	102.53
3	B	302	MPO	C2-C3-N1	-3.02	106.38	113.88
3	A	303	MPO	O2-S1-O1	-2.62	104.89	113.95
3	B	303	MPO	O3-S1-O1	-2.50	105.17	111.27
4	A	304	FNF	C6Q-C5Q-C4Q	-2.36	109.01	113.06

Continued on next page...

Continued from previous page...

Mol	Chain	Res	Type	Atoms	Z	Observed(°)	Ideal(°)
2	B	301	FON	C4A-C4-N3	-2.28	119.78	123.34
2	B	301	FON	CB-CA-CT	-2.18	108.87	112.11
2	A	301	FON	N3-C2-N1	-2.18	121.96	125.43
3	B	302	MPO	O2-S1-O1	-2.17	106.43	113.95
4	B	304	FNF	C5-C6-N1	-2.14	119.83	122.15
2	B	301	FON	C9-N10-C14	-2.12	115.72	121.88
2	B	301	FON	C2-N1-C8A	2.20	119.44	114.50
3	A	302	MPO	C3-N1-C4	2.21	117.01	111.24
2	B	301	FON	NA2-C2-N1	2.25	120.79	117.25
4	A	304	FNF	C5M-C5-C6	2.25	123.33	118.67
3	A	303	MPO	C3-N1-C4	2.44	117.60	111.24
4	A	304	FNF	O1B-PB-O2B	2.46	124.64	112.14
3	B	303	MPO	O3-S1-C1	2.48	109.78	105.77
3	A	303	MPO	O1-S1-C1	2.50	109.92	106.92
3	B	303	MPO	C3-N1-C4	2.53	117.83	111.24
2	A	301	FON	NA2-C2-N1	2.58	121.30	117.25
3	B	303	MPO	O1-S1-C1	2.59	110.03	106.92
2	B	301	FON	C9-C6-N5	2.70	116.47	110.94
3	B	303	MPO	C3-N1-C7	3.10	119.33	111.24
3	B	302	MPO	C3-N1-C7	3.17	119.52	111.24
3	A	302	MPO	C3-N1-C7	3.18	119.54	111.24
3	B	302	MPO	O1-S1-C1	3.52	111.16	106.92
3	B	302	MPO	C3-N1-C4	3.63	120.72	111.24
3	A	303	MPO	C3-N1-C7	3.70	120.89	111.24
2	A	301	FON	C4-N3-C2	3.85	121.59	116.06
3	A	302	MPO	C6-C7-N1	4.20	115.89	110.11
3	A	303	MPO	O2-S1-C1	4.70	112.58	106.92
3	B	302	MPO	C7-N1-C4	4.92	119.74	108.87
2	A	301	FON	C4-C4A-C8A	5.43	118.75	114.43
3	A	303	MPO	C7-N1-C4	5.70	121.47	108.87
3	B	302	MPO	O2-S1-C1	5.75	113.83	106.92
2	A	301	FON	C9-C6-N5	5.90	123.02	110.94
3	B	303	MPO	C7-N1-C4	6.30	122.80	108.87
3	A	302	MPO	C7-N1-C4	6.54	123.34	108.87
4	A	304	FNF	C4-N3-C2	6.96	121.07	115.14
2	B	301	FON	C4-C4A-C8A	7.11	120.09	114.43

There are no chirality outliers.

There are no torsion outliers.

There are no ring outliers.

8 monomers are involved in 9 short contacts:

Mol	Chain	Res	Type	Clashes	Symm-Clashes
2	A	301	FON	1	0
3	A	303	MPO	1	0
4	A	304	FNF	1	0
2	B	301	FON	1	0
3	B	302	MPO	2	0
3	B	303	MPO	1	0
6	B	306	EDO	1	0
6	B	308	EDO	1	0

5.7 Other polymers [i](#)

There are no such residues in this entry.

5.8 Polymer linkage issues [i](#)

There are no chain breaks in this entry.

6 Fit of model and data [i](#)

6.1 Protein, DNA and RNA chains [i](#)

In the following table, the column labelled ‘#RSRZ > 2’ contains the number (and percentage) of RSRZ outliers, followed by percent RSRZ outliers for the chain as percentile scores relative to all X-ray entries and entries of similar resolution. The OWAB column contains the minimum, median, 95th percentile and maximum values of the occupancy-weighted average B-factor per residue. The column labelled ‘Q < 0.9’ lists the number of (and percentage) of residues with an average occupancy less than 0.9.

Mol	Chain	Analysed	<RSRZ>	#RSRZ>2	OWAB(Å ²)	Q<0.9
1	A	273/274 (99%)	-0.23	5 (1%) 68 68	8, 13, 27, 48	0
1	B	274/274 (100%)	0.15	13 (4%) 31 33	9, 17, 34, 53	0
All	All	547/548 (99%)	-0.04	18 (3%) 46 47	8, 15, 32, 53	0

All (18) RSRZ outliers are listed below:

Mol	Chain	Res	Type	RSRZ
1	A	-1	GLY	6.9
1	B	-1	GLY	6.7
1	A	270	ASN	3.6
1	B	272	LEU	3.3
1	B	28	ASP	3.0
1	A	271	LYS	2.9
1	B	56[A]	ASN	2.8
1	A	0	HIS	2.8
1	B	69	GLU	2.7
1	B	193	LYS	2.5
1	B	0	HIS	2.5
1	B	68	ILE	2.4
1	A	193	LYS	2.2
1	B	2	ILE	2.1
1	B	1	MET	2.1
1	B	178	LYS	2.1
1	B	26	GLU	2.1
1	B	67	ASN	2.1

6.2 Non-standard residues in protein, DNA, RNA chains [i](#)

There are no non-standard protein/DNA/RNA residues in this entry.

6.3 Carbohydrates [i](#)

There are no carbohydrates in this entry.

6.4 Ligands [i](#)

In the following table, the Atoms column lists the number of modelled atoms in the group and the number defined in the chemical component dictionary. The B-factors column lists the minimum, median, 95th percentile and maximum values of B factors of atoms in the group. The column labelled 'Q< 0.9' lists the number of atoms with occupancy less than 0.9.

Mol	Type	Chain	Res	Atoms	RSCC	RSR	B-factors(\AA^2)	Q<0.9
6	EDO	B	308	4/4	0.73	0.23	27,30,31,35	0
6	EDO	B	306	4/4	0.83	0.20	30,44,48,48	0
6	EDO	B	307	4/4	0.86	0.11	27,33,33,42	0
3	MPO	A	303	13/13	0.87	0.23	19,31,49,52	0
3	MPO	B	303	13/13	0.87	0.23	23,36,51,54	0
2	FON	B	301	34/34	0.90	0.12	15,22,33,41	0
2	FON	A	301	34/34	0.91	0.11	10,18,30,36	0
6	EDO	B	305	4/4	0.94	0.11	19,28,28,33	0
4	FNF	A	304	37/37	0.96	0.08	9,14,21,32	0
3	MPO	A	302	13/13	0.96	0.13	22,26,29,31	0
4	FNF	B	304	37/37	0.96	0.08	10,15,29,31	0
3	MPO	B	302	13/13	0.97	0.11	24,27,32,37	0
5	CL	A	305	1/1	0.99	0.08	23,23,23,23	0

6.5 Other polymers [i](#)

There are no such residues in this entry.