



Full wwPDB X-ray Structure Validation Report ⓘ

Mar 9, 2018 – 06:52 am GMT

PDB ID : 5LXP
Title : Human PARP14 (ARTD8), catalytic fragment in complex with inhibitor H5
Authors : Karlberg, T.; Thorsell, A.G.; Schuler, H.
Deposited on : 2016-09-22
Resolution : 2.07 Å(reported)

This is a Full wwPDB X-ray Structure Validation Report for a publicly released PDB entry.

We welcome your comments at validation@mail.wwpdb.org

A user guide is available at

<https://www.wwpdb.org/validation/2017/XrayValidationReportHelp>

with specific help available everywhere you see the ⓘ symbol.

The following versions of software and data (see [references ⓘ](#)) were used in the production of this report:

MolProbity : 4.02b-467
Mogul : 1.7.3 (157068), CSD as539be (2018)
Xtriage (Phenix) : 1.13
EDS : trunk30967
Percentile statistics : 20171227.v01 (using entries in the PDB archive December 27th 2017)
Refmac : 5.8.0158
CCP4 : 7.0 (Gargrove)
Ideal geometry (proteins) : Engh & Huber (2001)
Ideal geometry (DNA, RNA) : Parkinson et al. (1996)
Validation Pipeline (wwPDB-VP) : trunk30967

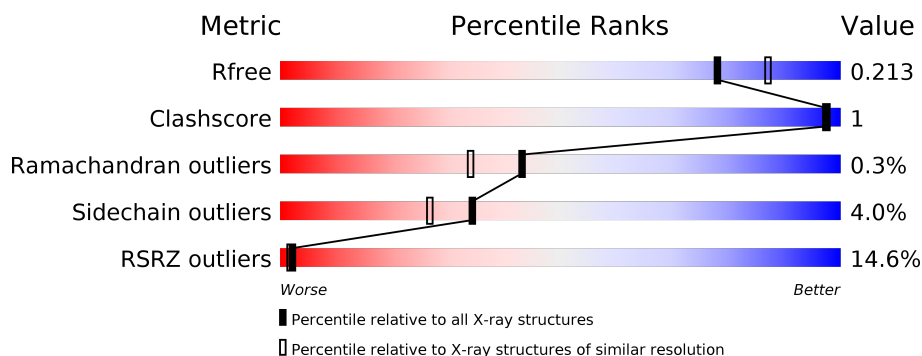
1 Overall quality at a glance

The following experimental techniques were used to determine the structure:

X-RAY DIFFRACTION

The reported resolution of this entry is 2.07 Å.

Percentile scores (ranging between 0-100) for global validation metrics of the entry are shown in the following graphic. The table shows the number of entries on which the scores are based.



Metric	Whole archive (#Entries)	Similar resolution (#Entries, resolution range(Å))
R_{free}	111664	2250 (2.08-2.04)
Clashscore	122126	2358 (2.08-2.04)
Ramachandran outliers	120053	2339 (2.08-2.04)
Sidechain outliers	120020	2339 (2.08-2.04)
RSRZ outliers	108989	2211 (2.08-2.04)

The table below summarises the geometric issues observed across the polymeric chains and their fit to the electron density. The red, orange, yellow and green segments on the lower bar indicate the fraction of residues that contain outliers for ≥ 3 , 2, 1 and 0 types of geometric quality criteria. A grey segment represents the fraction of residues that are not modelled. The numeric value for each fraction is indicated below the corresponding segment, with a dot representing fractions $\leq 5\%$. The upper red bar (where present) indicates the fraction of residues that have poor fit to the electron density. The numeric value is given above the bar.

Mol	Chain	Length	Quality of chain
1	A	193	<div> <div>15%</div> <div> <div></div> <div>90%</div> <div>• 6%</div> </div> </div>
1	B	193	<div> <div>13%</div> <div> <div></div> <div>88%</div> <div>5% • 6%</div> </div> </div>

In the tables below, the ZeroOcc column contains the number of atoms modelled with zero occupancy, the AltConf column contains the number of residues with at least one atom in alternate conformation and the Trace column contains the number of residues modelled with at most 2 atoms.

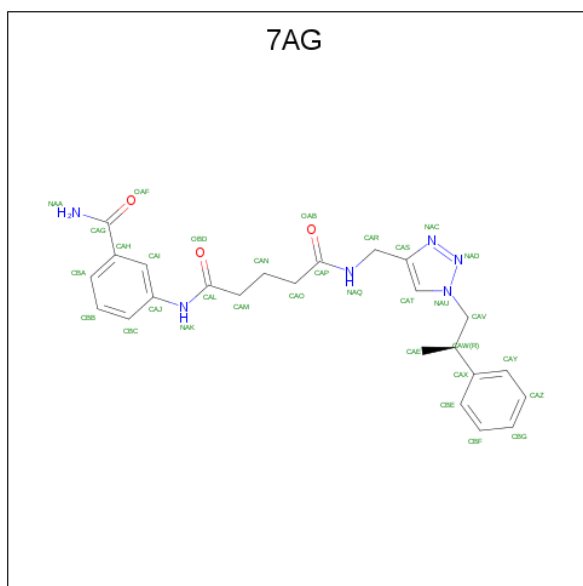
- Molecule 1 is a protein called Poly [ADP-ribose] polymerase 14.

Mol	Chain	Residues	Atoms					ZeroOcc	AltConf	Trace
1	A	182	Total 1485	C 938	N 262	O 280	S 5	0	0	0
1	B	181	Total 1477	C 932	N 261	O 278	S 6	0	0	0

There are 4 discrepancies between the modelled and reference sequences:

Chain	Residue	Modelled	Actual	Comment	Reference
A	1609	SER	-	expression tag	UNP Q460N5
A	1610	MET	-	expression tag	UNP Q460N5
B	1609	SER	-	expression tag	UNP Q460N5
B	1610	MET	-	expression tag	UNP Q460N5

- Molecule 2 is {N}'-(3-aminocarbonylphenyl)-{N}-[[1-[(2 {R})-2-phenylpropyl]-1,2,3-triazol-4-yl]methyl]pentanediamide (three-letter code: 7AG) (formula: C₂₄H₂₈N₆O₃).



Mol	Chain	Residues	Atoms				ZeroOcc	AltConf
2	A	1	Total 33	C 24	N 6	O 3	0	0
2	B	1	Total 33	C 24	N 6	O 3	0	0

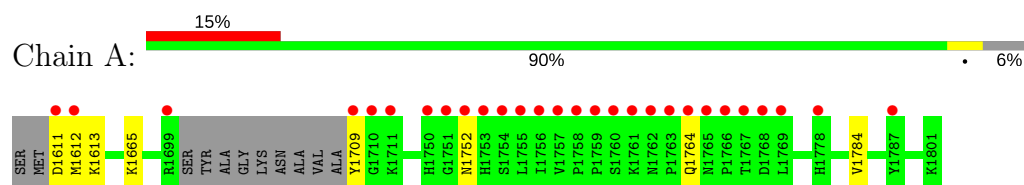
- Molecule 3 is water.

Mol	Chain	Residues	Atoms		ZeroOcc	AltConf
3	A	44	Total 44	O 44	0	0
3	B	36	Total 36	O 36	0	0

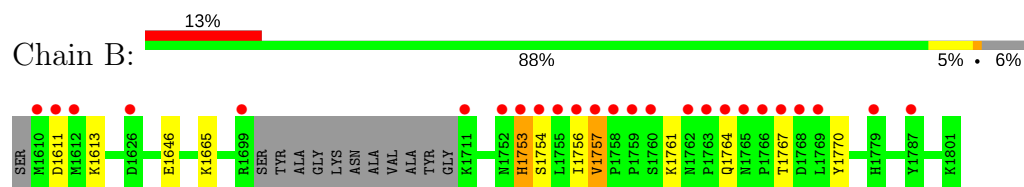
3 Residue-property plots [i](#)

These plots are drawn for all protein, RNA and DNA chains in the entry. The first graphic for a chain summarises the proportions of the various outlier classes displayed in the second graphic. The second graphic shows the sequence view annotated by issues in geometry and electron density. Residues are color-coded according to the number of geometric quality criteria for which they contain at least one outlier: green = 0, yellow = 1, orange = 2 and red = 3 or more. A red dot above a residue indicates a poor fit to the electron density ($RSRZ > 2$). Stretches of 2 or more consecutive residues without any outlier are shown as a green connector. Residues present in the sample, but not in the model, are shown in grey.

- Molecule 1: Poly [ADP-ribose] polymerase 14



- Molecule 1: Poly [ADP-ribose] polymerase 14



4 Data and refinement statistics

Property	Value	Source
Space group	C 1 2 1	Depositor
Cell constants a, b, c, α , β , γ	145.40Å 83.68Å 35.05Å 90.00° 95.95° 90.00°	Depositor
Resolution (Å)	24.15 – 2.07 41.77 – 2.07	Depositor EDS
% Data completeness (in resolution range)	99.3 (24.15-2.07) 99.3 (41.77-2.07)	Depositor EDS
R_{merge}	0.11	Depositor
R_{sym}	(Not available)	Depositor
$\langle I/\sigma(I) \rangle$ ¹	1.84 (at 2.06Å)	Xtriage
Refinement program	BUSTER 2.10.2	Depositor
R, R_{free}	0.178 , 0.207 0.184 , 0.213	Depositor DCC
R_{free} test set	1296 reflections (5.12%)	wwPDB-VP
Wilson B-factor (Å ²)	32.8	Xtriage
Anisotropy	0.250	Xtriage
Bulk solvent k_{sol} (e/Å ³), B_{sol} (Å ²)	0.36 , 50.8	EDS
L-test for twinning ²	$\langle L \rangle = 0.49$, $\langle L^2 \rangle = 0.32$	Xtriage
Estimated twinning fraction	No twinning to report.	Xtriage
F_o, F_c correlation	0.96	EDS
Total number of atoms	3108	wwPDB-VP
Average B, all atoms (Å ²)	46.0	wwPDB-VP

Xtriage's analysis on translational NCS is as follows: *The largest off-origin peak in the Patterson function is 8.00% of the height of the origin peak. No significant pseudotranslation is detected.*

¹Intensities estimated from amplitudes.

²Theoretical values of $\langle |L| \rangle$, $\langle L^2 \rangle$ for acentric reflections are 0.5, 0.333 respectively for untwinned datasets, and 0.375, 0.2 for perfectly twinned datasets.

5 Model quality [i](#)

5.1 Standard geometry [i](#)

Bond lengths and bond angles in the following residue types are not validated in this section: 7AG

The Z score for a bond length (or angle) is the number of standard deviations the observed value is removed from the expected value. A bond length (or angle) with $|Z| > 5$ is considered an outlier worth inspection. RMSZ is the root-mean-square of all Z scores of the bond lengths (or angles).

Mol	Chain	Bond lengths		Bond angles	
		RMSZ	$\# Z > 5$	RMSZ	$\# Z > 5$
1	A	0.49	0/1527	0.61	0/2074
1	B	0.50	0/1518	0.63	0/2061
All	All	0.50	0/3045	0.62	0/4135

There are no bond length outliers.

There are no bond angle outliers.

There are no chirality outliers.

There are no planarity outliers.

5.2 Too-close contacts [i](#)

In the following table, the Non-H and H(model) columns list the number of non-hydrogen atoms and hydrogen atoms in the chain respectively. The H(added) column lists the number of hydrogen atoms added and optimized by MolProbity. The Clashes column lists the number of clashes within the asymmetric unit, whereas Symm-Clashes lists symmetry related clashes.

Mol	Chain	Non-H	H(model)	H(added)	Clashes	Symm-Clashes
1	A	1485	0	1404	1	0
1	B	1477	0	1401	4	0
2	A	33	0	0	0	0
2	B	33	0	0	0	0
3	A	44	0	0	0	0
3	B	36	0	0	0	0
All	All	3108	0	2805	5	0

The all-atom clashscore is defined as the number of clashes found per 1000 atoms (including hydrogen atoms). The all-atom clashscore for this structure is 1.

All (5) close contacts within the same asymmetric unit are listed below, sorted by their clash

magnitude.

Atom-1	Atom-2	Interatomic distance (Å)	Clash overlap (Å)
1:B:1753:HIS:CG	1:B:1754:SER:H	2.10	0.69
1:B:1753:HIS:CG	1:B:1754:SER:N	2.74	0.55
1:B:1761:LYS:HE3	1:B:1770:TYR:HA	1.95	0.48
1:B:1756:ILE:HG13	1:B:1757:VAL:HG22	1.98	0.45
1:A:1709:TYR:HB2	1:A:1784:VAL:HG21	2.00	0.43

There are no symmetry-related clashes.

5.3 Torsion angles [i](#)

5.3.1 Protein backbone [i](#)

In the following table, the Percentiles column shows the percent Ramachandran outliers of the chain as a percentile score with respect to all X-ray entries followed by that with respect to entries of similar resolution.

The Analysed column shows the number of residues for which the backbone conformation was analysed, and the total number of residues.

Mol	Chain	Analysed	Favoured	Allowed	Outliers	Percentiles	
1	A	178/193 (92%)	173 (97%)	5 (3%)	0	100	100
1	B	177/193 (92%)	173 (98%)	3 (2%)	1 (1%)	27	16
All	All	355/386 (92%)	346 (98%)	8 (2%)	1 (0%)	43	34

All (1) Ramachandran outliers are listed below:

Mol	Chain	Res	Type
1	B	1753	HIS

5.3.2 Protein sidechains [i](#)

In the following table, the Percentiles column shows the percent sidechain outliers of the chain as a percentile score with respect to all X-ray entries followed by that with respect to entries of similar resolution.

The Analysed column shows the number of residues for which the sidechain conformation was analysed, and the total number of residues.

Mol	Chain	Analysed	Rotameric	Outliers	Percentiles	
1	A	163/170 (96%)	157 (96%)	6 (4%)	37	30
1	B	163/170 (96%)	156 (96%)	7 (4%)	32	24
All	All	326/340 (96%)	313 (96%)	13 (4%)	34	27

All (13) residues with a non-rotameric sidechain are listed below:

Mol	Chain	Res	Type
1	A	1611	ASP
1	A	1612	MET
1	A	1613	LYS
1	A	1665	LYS
1	A	1752	ASN
1	A	1764	GLN
1	B	1611	ASP
1	B	1613	LYS
1	B	1646	GLU
1	B	1665	LYS
1	B	1757	VAL
1	B	1764	GLN
1	B	1767	THR

Some sidechains can be flipped to improve hydrogen bonding and reduce clashes. All (2) such sidechains are listed below:

Mol	Chain	Res	Type
1	A	1693	ASN
1	B	1693	ASN

5.3.3 RNA ⓘ

There are no RNA molecules in this entry.

5.4 Non-standard residues in protein, DNA, RNA chains ⓘ

There are no non-standard protein/DNA/RNA residues in this entry.

5.5 Carbohydrates ⓘ

There are no carbohydrates in this entry.

5.6 Ligand geometry

2 ligands are modelled in this entry.

In the following table, the Counts columns list the number of bonds (or angles) for which Mogul statistics could be retrieved, the number of bonds (or angles) that are observed in the model and the number of bonds (or angles) that are defined in the Chemical Component Dictionary. The Link column lists molecule types, if any, to which the group is linked. The Z score for a bond length (or angle) is the number of standard deviations the observed value is removed from the expected value. A bond length (or angle) with $|Z| > 2$ is considered an outlier worth inspection. RMSZ is the root-mean-square of all Z scores of the bond lengths (or angles).

Mol	Type	Chain	Res	Link	Bond lengths			Bond angles		
					Counts	RMSZ	# Z > 2	Counts	RMSZ	# Z > 2
2	7AG	A	1901	-	35,35,35	4.42	18 (51%)	40,46,46	2.79	9 (22%)
2	7AG	B	1901	-	35,35,35	4.50	10 (28%)	40,46,46	2.74	8 (20%)

In the following table, the Chirals column lists the number of chiral outliers, the number of chiral centers analysed, the number of these observed in the model and the number defined in the Chemical Component Dictionary. Similar counts are reported in the Torsion and Rings columns. '-' means no outliers of that kind were identified.

Mol	Type	Chain	Res	Link	Chirals	Torsions	Rings
2	7AG	A	1901	-	-	0/25/27/27	0/3/3/3
2	7AG	B	1901	-	-	0/25/27/27	0/3/3/3

All (28) bond length outliers are listed below:

Mol	Chain	Res	Type	Atoms	Z	Observed(Å)	Ideal(Å)
2	B	1901	7AG	NAC-NAD	-20.02	0.96	1.34
2	A	1901	7AG	NAC-NAD	-18.92	0.98	1.34
2	B	1901	7AG	NAD-NAU	-12.38	1.10	1.34
2	A	1901	7AG	NAD-NAU	-12.09	1.11	1.34
2	B	1901	7AG	CAH-CAG	-5.83	1.41	1.50
2	B	1901	7AG	CAT-CAS	-4.28	1.29	1.36
2	A	1901	7AG	CAT-NAU	-4.09	1.31	1.35
2	A	1901	7AG	CAT-CAS	-3.84	1.30	1.36
2	A	1901	7AG	CAH-CAG	-3.66	1.44	1.50
2	B	1901	7AG	CAT-NAU	-3.57	1.31	1.35
2	B	1901	7AG	CAS-NAC	-3.42	1.29	1.33
2	B	1901	7AG	CAX-CAW	-3.22	1.41	1.53
2	A	1901	7AG	CAS-NAC	-2.89	1.30	1.33
2	B	1901	7AG	CAJ-NAK	-2.74	1.36	1.41
2	A	1901	7AG	CAJ-NAK	-2.48	1.36	1.41
2	A	1901	7AG	CAX-CAW	-2.29	1.45	1.53

Continued on next page...

Continued from previous page...

Mol	Chain	Res	Type	Atoms	Z	Observed(Å)	Ideal(Å)
2	A	1901	7AG	CAY-CAX	2.08	1.42	1.39
2	A	1901	7AG	CAI-CAJ	2.08	1.42	1.39
2	A	1901	7AG	CAR-CAS	2.36	1.55	1.51
2	A	1901	7AG	CAM-CAL	2.43	1.56	1.51
2	A	1901	7AG	CBG-CAZ	2.43	1.43	1.38
2	A	1901	7AG	CBA-CAH	2.46	1.43	1.39
2	B	1901	7AG	CAI-CAJ	2.62	1.43	1.39
2	A	1901	7AG	CAI-CAH	2.97	1.43	1.39
2	A	1901	7AG	CBC-CAJ	3.35	1.45	1.39
2	A	1901	7AG	CAV-CAW	4.60	1.58	1.53
2	A	1901	7AG	CAO-CAP	4.62	1.60	1.51
2	B	1901	7AG	CAV-CAW	4.82	1.59	1.53

All (17) bond angle outliers are listed below:

Mol	Chain	Res	Type	Atoms	Z	Observed(°)	Ideal(°)
2	A	1901	7AG	CAT-CAS-NAC	-6.04	102.35	111.41
2	B	1901	7AG	CAT-CAS-NAC	-5.49	103.18	111.41
2	A	1901	7AG	CAY-CAX-CAW	-4.44	109.57	121.09
2	A	1901	7AG	CBC-CAJ-CAI	-2.65	116.50	119.66
2	B	1901	7AG	CBC-CAJ-CAI	-2.50	116.68	119.66
2	B	1901	7AG	CBA-CAH-CAI	-2.26	116.54	119.23
2	A	1901	7AG	CAS-CAR-NAQ	-2.17	108.00	112.73
2	B	1901	7AG	CAY-CAX-CAW	-2.02	115.84	121.09
2	B	1901	7AG	CAS-NAC-NAD	2.02	111.46	107.28
2	A	1901	7AG	CBB-CBC-CAJ	2.09	122.23	119.72
2	A	1901	7AG	CAS-NAC-NAD	2.16	111.74	107.28
2	B	1901	7AG	CAH-CAG-NAA	2.24	120.36	117.76
2	B	1901	7AG	CAH-CAI-CAJ	2.66	124.21	120.46
2	A	1901	7AG	CAE-CAW-CAX	2.86	123.36	111.98
2	A	1901	7AG	CBE-CAX-CAW	3.27	129.58	121.09
2	A	1901	7AG	NAC-NAD-NAU	13.28	117.33	107.31
2	B	1901	7AG	NAC-NAD-NAU	14.25	118.06	107.31

There are no chirality outliers.

There are no torsion outliers.

There are no ring outliers.

No monomer is involved in short contacts.

5.7 Other polymers [i](#)

There are no such residues in this entry.

5.8 Polymer linkage issues [i](#)

There are no chain breaks in this entry.

6 Fit of model and data

6.1 Protein, DNA and RNA chains

In the following table, the column labelled ‘#RSRZ > 2’ contains the number (and percentage) of RSRZ outliers, followed by percent RSRZ outliers for the chain as percentile scores relative to all X-ray entries and entries of similar resolution. The OWAB column contains the minimum, median, 95th percentile and maximum values of the occupancy-weighted average B-factor per residue. The column labelled ‘Q < 0.9’ lists the number of (and percentage) of residues with an average occupancy less than 0.9.

Mol	Chain	Analysed	<RSRZ>	#RSRZ>2	OWAB(Å ²)	Q<0.9
1	A	182/193 (94%)	1.23	28 (15%) 2 1	23, 36, 117, 154	0
1	B	181/193 (93%)	0.88	25 (13%) 3 2	24, 37, 99, 127	0
All	All	363/386 (94%)	1.05	53 (14%) 2 2	23, 37, 108, 154	0

All (53) RSRZ outliers are listed below:

Mol	Chain	Res	Type	RSRZ
1	A	1762	ASN	15.9
1	A	1765	ASN	14.0
1	A	1764	GLN	13.5
1	A	1763	PRO	13.4
1	B	1754	SER	12.7
1	A	1768	ASP	11.8
1	A	1766	PRO	11.7
1	A	1753	HIS	10.2
1	B	1765	ASN	9.5
1	A	1756	ILE	9.4
1	B	1763	PRO	9.3
1	A	1752	ASN	9.0
1	B	1762	ASN	9.0
1	A	1760	SER	8.9
1	B	1764	GLN	8.8
1	B	1755	LEU	8.7
1	A	1767	THR	8.5
1	A	1754	SER	8.4
1	B	1766	PRO	8.3
1	A	1755	LEU	7.9
1	B	1768	ASP	7.9
1	B	1756	ILE	7.3
1	A	1709	TYR	7.3
1	A	1769	LEU	7.0

Continued on next page...

Continued from previous page...

Mol	Chain	Res	Type	RSRZ
1	B	1753	HIS	6.5
1	A	1757	VAL	6.1
1	B	1757	VAL	5.6
1	B	1767	THR	5.4
1	A	1710	GLY	4.9
1	B	1752	ASN	4.7
1	B	1760	SER	4.5
1	A	1758	PRO	4.0
1	B	1769	LEU	4.0
1	B	1759	PRO	4.0
1	A	1711	LYS	4.0
1	A	1699	ARG	3.9
1	A	1751	GLY	3.4
1	A	1778	HIS	3.4
1	A	1611	ASP	3.3
1	A	1759	PRO	3.1
1	B	1699	ARG	3.0
1	A	1612	MET	2.9
1	B	1611	ASP	2.8
1	A	1761	LYS	2.6
1	B	1612	MET	2.5
1	B	1711	LYS	2.5
1	B	1758	PRO	2.5
1	B	1787	TYR	2.4
1	A	1787	TYR	2.2
1	B	1779	HIS	2.1
1	B	1610	MET	2.1
1	B	1626	ASP	2.1
1	A	1750	HIS	2.0

6.2 Non-standard residues in protein, DNA, RNA chains ⓘ

There are no non-standard protein/DNA/RNA residues in this entry.

6.3 Carbohydrates ⓘ

There are no carbohydrates in this entry.

6.4 Ligands [i](#)

In the following table, the Atoms column lists the number of modelled atoms in the group and the number defined in the chemical component dictionary. The B-factors column lists the minimum, median, 95th percentile and maximum values of B factors of atoms in the group. The column labelled 'Q< 0.9' lists the number of atoms with occupancy less than 0.9.

Mol	Type	Chain	Res	Atoms	RSCC	RSR	B-factors(\AA^2)	Q<0.9
2	7AG	B	1901	33/33	0.90	0.20	31,78,84,85	0
2	7AG	A	1901	33/33	0.94	0.14	25,33,42,44	0

6.5 Other polymers [i](#)

There are no such residues in this entry.