



wwPDB X-ray Structure Validation Summary Report ⓘ

Feb 16, 2018 – 11:37 pm GMT

PDB ID : 1M0M
Title : BACTERIORHODOPSIN M1 INTERMEDIATE AT 1.43 Å RESOLUTION
Authors : Lanyi, J.K.
Deposited on : 2002-06-13
Resolution : 1.43 Å(reported)

This is a wwPDB X-ray Structure Validation Summary Report for a publicly released PDB entry.

We welcome your comments at validation@mail.wwpdb.org

A user guide is available at

<https://www.wwpdb.org/validation/2017/XrayValidationReportHelp>

with specific help available everywhere you see the ⓘ symbol.

The following versions of software and data (see [references ⓘ](#)) were used in the production of this report:

MolProbity : 4.02b-467
Mogul : 1.7.3 (157068), CSD as539be (2018)
Xtriage (Phenix) : NOT EXECUTED
EDS : NOT EXECUTED
Percentile statistics : 20171227.v01 (using entries in the PDB archive December 27th 2017)
Ideal geometry (proteins) : Engh & Huber (2001)
Ideal geometry (DNA, RNA) : Parkinson et al. (1996)
Validation Pipeline (wwPDB-VP) : trunk30686

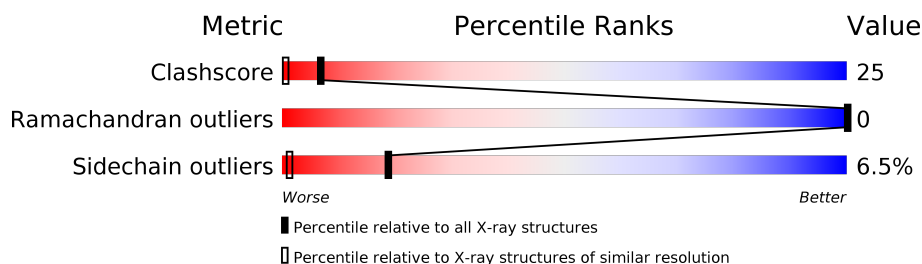
1 Overall quality at a glance

The following experimental techniques were used to determine the structure:

X-RAY DIFFRACTION

The reported resolution of this entry is 1.43 Å.

Percentile scores (ranging between 0-100) for global validation metrics of the entry are shown in the following graphic. The table shows the number of entries on which the scores are based.



Metric	Whole archive (#Entries)	Similar resolution (#Entries, resolution range(Å))
Clashscore	122078	1642 (1.46-1.42)
Ramachandran outliers	120005	1617 (1.46-1.42)
Sidechain outliers	119972	1617 (1.46-1.42)

The table below summarises the geometric issues observed across the polymeric chains and their fit to the electron density. The red, orange, yellow and green segments on the lower bar indicate the fraction of residues that contain outliers for ≥ 3 , 2, 1 and 0 types of geometric quality criteria. A grey segment represents the fraction of residues that are not modelled. The numeric value for each fraction is indicated below the corresponding segment, with a dot representing fractions $\leq 5\%$. The upper red bar (where present) indicates the fraction of residues that have poor fit to the electron density. The numeric value is given above the bar.

Note EDS was not executed.

Mol	Chain	Length	Quality of chain
1	1-A	262	
1	2-A	262	

The following table lists non-polymeric compounds, carbohydrate monomers and non-standard residues in protein, DNA, RNA chains that are outliers for geometric or electron-density-fit criteria:

Mol	Type	Chain	Res	Chirality	Geometry	Clashes	Electron density
3	LI1	1-A	601	X	-	-	-
3	LI1	1-A	602	-	-	X	-
3	LI1	1-A	607	X	-	-	-

Continued on next page...

Continued from previous page...

Mol	Type	Chain	Res	Chirality	Geometry	Clashes	Electron density
3	LI1	1-A	611	X	-	-	-
3	LI1	1-A	613	X	-	-	-
3	LI1	2-A	601	X	-	-	-
3	LI1	2-A	602	-	-	X	-
3	LI1	2-A	607	X	-	-	-
3	LI1	2-A	611	X	-	-	-
3	LI1	2-A	613	X	-	-	-

2 Entry composition [i](#)

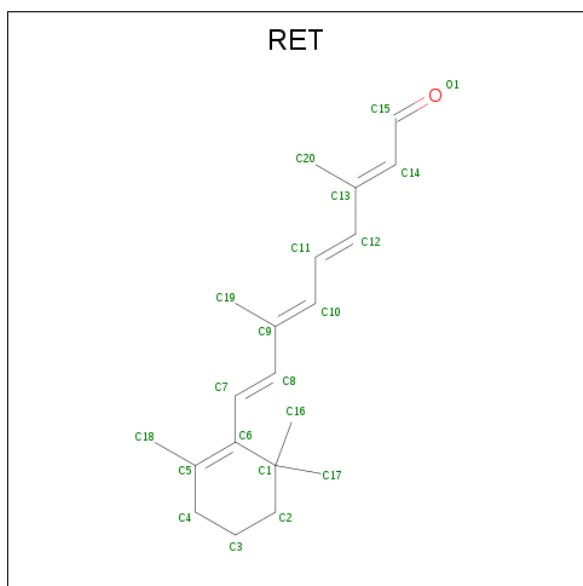
There are 5 unique types of molecules in this entry. The entry contains 4146 atoms, of which 0 are hydrogens and 0 are deuteriums.

In the tables below, the ZeroOcc column contains the number of atoms modelled with zero occupancy, the AltConf column contains the number of residues with at least one atom in alternate conformation and the Trace column contains the number of residues modelled with at most 2 atoms.

- Molecule 1 is a protein called BACTERIORHODOPSIN.

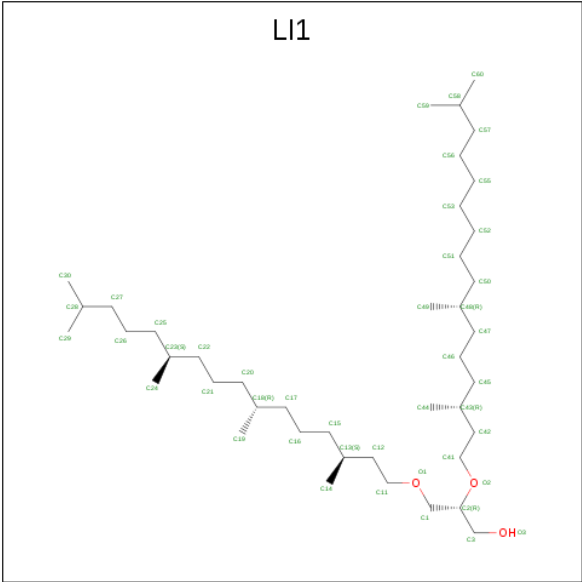
Mol	Chain	Residues	Atoms					ZeroOcc	AltConf	Trace
1	1-A	222	Total	C	N	O	S	0	1	0
			1720	1159	262	290	9			
1	2-A	222	Total	C	N	O	S	0	2	0
			1720	1159	262	290	9			

- Molecule 2 is RETINAL (three-letter code: RET) (formula: $C_{20}H_{28}O$).



Mol	Chain	Residues	Atoms		ZeroOcc	AltConf
2	1-A	1	Total	C	0	0
			20	20		
2	2-A	1	Total	C	0	0
			20	20		

- Molecule 3 is 1-[2,6,10,14-TETRAMETHYL-HEXADECAN-16-YL]-2-[2,10,14-TRIMETHYL-HEXADECAN-16-YL]GLYCEROL (three-letter code: LI1) (formula: $C_{42}H_{86}O_3$).



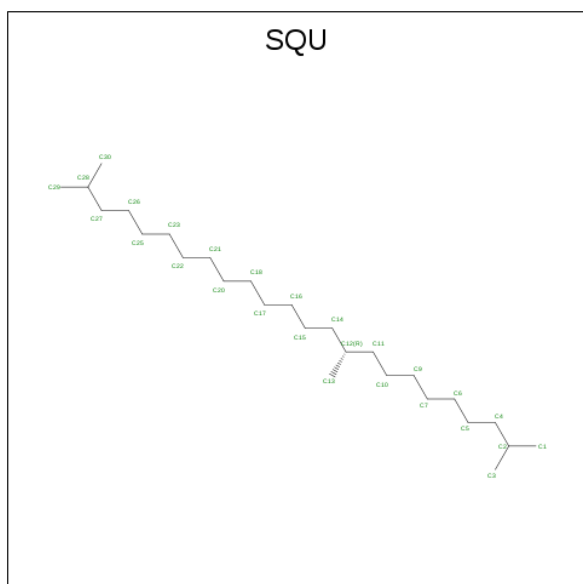
Mol	Chain	Residues	Atoms	ZeroOcc	AltConf
3	1-A	1	Total C O 32 29 3	0	0
3	2-A	1	Total C O 32 29 3	0	0
3	1-A	1	Total C O 41 38 3	0	0
3	2-A	1	Total C O 41 38 3	0	0
3	1-A	1	Total C 18 18	0	0
3	2-A	1	Total C 18 18	0	0
3	1-A	1	Total C 16 16	0	0
3	2-A	1	Total C 16 16	0	0
3	1-A	1	Total C 8 8	0	0
3	2-A	1	Total C 8 8	0	0
3	1-A	1	Total C 8 8	0	0
3	2-A	1	Total C 8 8	0	0
3	1-A	1	Total C O 38 35 3	0	0
3	2-A	1	Total C O 38 35 3	0	0

Continued on next page...

Continued from previous page...

Mol	Chain	Residues	Atoms	ZeroOcc	AltConf
3	1-A	1	Total C 18 18	0	0
3	2-A	1	Total C 18 18	0	0
3	1-A	1	Total C 16 16	0	0
3	2-A	1	Total C 16 16	0	0
3	1-A	1	Total C O 40 37 3	0	0
3	2-A	1	Total C O 40 37 3	0	0
3	1-A	1	Total C 17 17	0	0
3	2-A	1	Total C 17 17	0	0
3	1-A	1	Total C 18 18	0	0
3	2-A	1	Total C 18 18	0	0
3	1-A	1	Total C 13 13	0	0
3	2-A	1	Total C 13 13	0	0

- Molecule 4 is 2,10,23-TRIMETHYL-TETRACOSANE (three-letter code: SQU) (formula: $C_{27}H_{56}$).



Mol	Chain	Residues	Atoms	ZeroOcc	AltConf
4	1-A	1	Total C 27 27	0	0
4	2-A	1	Total C 27 27	0	0

- Molecule 5 is water.

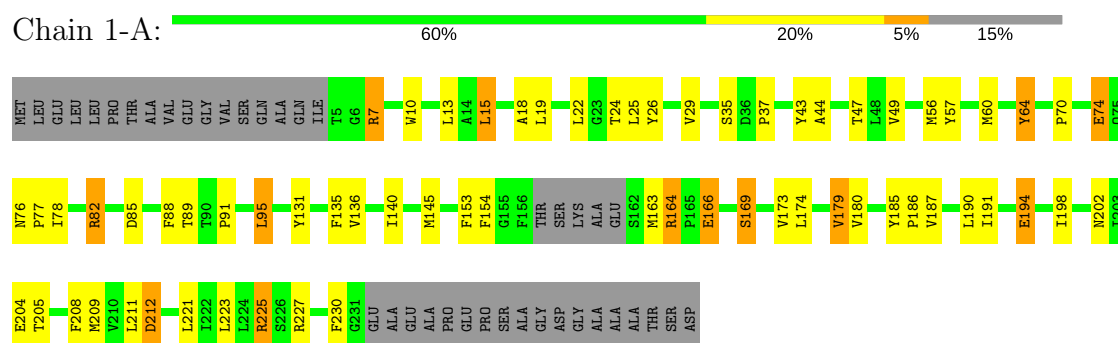
Mol	Chain	Residues	Atoms	ZeroOcc	AltConf
5	1-A	23	Total O 23 23	0	0
5	2-A	23	Total O 23 23	0	0

3 Residue-property plots [i](#)

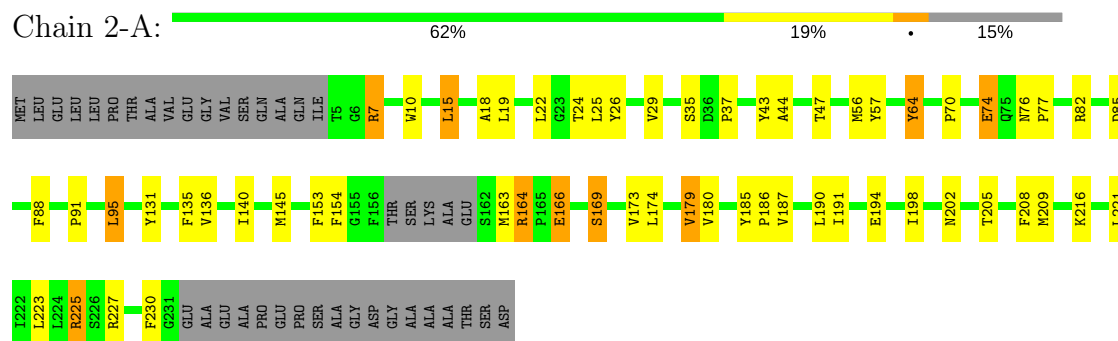
These plots are drawn for all protein, RNA and DNA chains in the entry. The first graphic for a chain summarises the proportions of the various outlier classes displayed in the second graphic. The second graphic shows the sequence view annotated by issues in geometry and electron density. Residues are color-coded according to the number of geometric quality criteria for which they contain at least one outlier: green = 0, yellow = 1, orange = 2 and red = 3 or more. A red dot above a residue indicates a poor fit to the electron density ($RSRZ > 2$). Stretches of 2 or more consecutive residues without any outlier are shown as a green connector. Residues present in the sample, but not in the model, are shown in grey.

Note EDS was not executed.

• Molecule 1: BACTERIORHODOPSIN



• Molecule 1: BACTERIORHODOPSIN



4 Data and refinement statistics

Xtriage (Phenix) and EDS were not executed - this section is therefore incomplete.

Property	Value	Source
Space group	P 63	Depositor
Cell constants a, b, c, α , β , γ	61.07Å 61.07Å 110.10Å 90.00° 90.00° 120.00°	Depositor
Resolution (Å)	25.00 – 1.43	Depositor
% Data completeness (in resolution range)	92.2 (25.00-1.43)	Depositor
R_{merge}	0.05	Depositor
R_{sym}	(Not available)	Depositor
Refinement program	SHELXL-97	Depositor
R, R_{free}	0.163 , 0.213	Depositor
Estimated twinning fraction	No twinning to report.	Xtriage
Total number of atoms	4146	wwPDB-VP
Average B, all atoms (Å ²)	33.0	wwPDB-VP

5 Model quality

5.1 Standard geometry

Bond lengths and bond angles in the following residue types are not validated in this section: SQU, RET, LI1

The Z score for a bond length (or angle) is the number of standard deviations the observed value is removed from the expected value. A bond length (or angle) with $|Z| > 5$ is considered an outlier worth inspection. RMSZ is the root-mean-square of all Z scores of the bond lengths (or angles).

Mol	Chain	Bond lengths		Bond angles	
		RMSZ	$\# Z > 5$	RMSZ	$\# Z > 5$
1	1-A	0.73	2/1767 (0.1%)	1.42	16/2413 (0.7%)
1	2-A	0.58	0/1761	1.38	13/2403 (0.5%)
All	All	0.66	2/3528 (0.1%)	1.40	29/4816 (0.6%)

Chiral center outliers are detected by calculating the chiral volume of a chiral center and verifying if the center is modelled as a planar moiety or with the opposite hand. A planarity outlier is detected by checking planarity of atoms in a peptide group, atoms in a mainchain group or atoms of a sidechain that are expected to be planar.

Mol	Chain	#Chirality outliers	#Planarity outliers
1	1-A	0	1

All (2) bond length outliers are listed below:

Mol	Chain	Res	Type	Atoms	Z	Observed(Å)	Ideal(Å)
1	1-A	212	ASP	CG-OD1	12.25	1.53	1.25
1	1-A	212	ASP	CG-OD2	12.10	1.53	1.25

The worst 5 of 29 bond angle outliers are listed below:

Mol	Chain	Res	Type	Atoms	Z	Observed(°)	Ideal(°)
1	1-A	212	ASP	CB-CG-OD2	-9.16	110.06	118.30
1	1-A	7	ARG	NE-CZ-NH1	7.78	124.19	120.30
1	2-A	7	ARG	NE-CZ-NH1	7.78	124.19	120.30
1	1-A	212	ASP	CB-CG-OD1	-7.78	111.30	118.30
1	1-A	82	ARG	NE-CZ-NH1	-7.70	116.45	120.30

There are no chirality outliers.

All (1) planarity outliers are listed below:

Mol	Chain	Res	Type	Group
1	1-A	212	ASP	Sidechain

5.2 Too-close contacts ⓘ

In the following table, the Non-H and H(model) columns list the number of non-hydrogen atoms and hydrogen atoms in the chain respectively. The H(added) column lists the number of hydrogen atoms added and optimized by MolProbity. The Clashes column lists the number of clashes within the asymmetric unit, whereas Symm-Clashes lists symmetry related clashes.

Mol	Chain	Non-H	H(model)	H(added)	Clashes	Symm-Clashes
1	1-A	1720	0	1774	75	0
1	2-A	1720	0	1772	69	0
2	1-A	20	0	27	3	0
2	2-A	20	0	27	1	0
3	1-A	283	0	454	76	0
3	2-A	283	0	454	76	0
4	1-A	27	0	53	4	0
4	2-A	27	0	53	4	0
5	1-A	23	0	0	1	0
5	2-A	23	0	0	3	0
All	All	4146	0	4614	216	0

The all-atom clashscore is defined as the number of clashes found per 1000 atoms (including hydrogen atoms). The all-atom clashscore for this structure is 25.

The worst 5 of 216 close contacts within the same asymmetric unit are listed below, sorted by their clash magnitude.

Atom-1	Atom-2	Interatomic distance (Å)	Clash overlap (Å)
3:A:609:LI1:C26	3:A:609:LI1:C25	1.74	1.60
3:A:609:LI1:C25	3:A:609:LI1:C26	1.74	1.60
3:A:609:LI1:C25	3:A:609:LI1:C27	2.51	0.89
3:A:609:LI1:C25	3:A:609:LI1:C27	2.51	0.89
1:A:180:VAL:HG22	3:A:610:LI1:H211	1.56	0.88

There are no symmetry-related clashes.

5.3 Torsion angles

5.3.1 Protein backbone

In the following table, the Percentiles column shows the percent Ramachandran outliers of the chain as a percentile score with respect to all X-ray entries followed by that with respect to entries of similar resolution.

The Analysed column shows the number of residues for which the backbone conformation was analysed, and the total number of residues.

Mol	Chain	Analysed	Favoured	Allowed	Outliers	Percentiles	
1	1-A	218/262 (83%)	215 (99%)	3 (1%)	0	100	100
1	2-A	218/262 (83%)	215 (99%)	3 (1%)	0	100	100
All	All	436/524 (83%)	430 (99%)	6 (1%)	0	100	100

There are no Ramachandran outliers to report.

5.3.2 Protein sidechains

In the following table, the Percentiles column shows the percent sidechain outliers of the chain as a percentile score with respect to all X-ray entries followed by that with respect to entries of similar resolution.

The Analysed column shows the number of residues for which the sidechain conformation was analysed, and the total number of residues.

Mol	Chain	Analysed	Rotameric	Outliers	Percentiles	
1	1-A	178/206 (86%)	166 (93%)	12 (7%)	18	1
1	2-A	176/206 (85%)	165 (94%)	11 (6%)	20	1
All	All	354/412 (86%)	331 (94%)	23 (6%)	19	1

5 of 23 residues with a non-rotameric sidechain are listed below:

Mol	Chain	Res	Type
1	1-A	204	GLU
1	2-A	15	LEU
1	2-A	202	ASN
1	1-A	225	ARG
1	2-A	74	GLU

Some sidechains can be flipped to improve hydrogen bonding and reduce clashes. All (2) such sidechains are listed below:

Mol	Chain	Res	Type
1	1-A	105	GLN
1	2-A	105	GLN

5.3.3 RNA ⓘ

There are no RNA molecules in this entry.

5.4 Non-standard residues in protein, DNA, RNA chains ⓘ

There are no non-standard protein/DNA/RNA residues in this entry.

5.5 Carbohydrates ⓘ

There are no carbohydrates in this entry.

5.6 Ligand geometry ⓘ

30 ligands are modelled in this entry.

In the following table, the Counts columns list the number of bonds (or angles) for which Mogul statistics could be retrieved, the number of bonds (or angles) that are observed in the model and the number of bonds (or angles) that are defined in the Chemical Component Dictionary. The Link column lists molecule types, if any, to which the group is linked. The Z score for a bond length (or angle) is the number of standard deviations the observed value is removed from the expected value. A bond length (or angle) with $|Z| > 2$ is considered an outlier worth inspection. RMSZ is the root-mean-square of all Z scores of the bond lengths (or angles).

Mol	Type	Chain	Res	Link	Bond lengths			Bond angles		
					Counts	RMSZ	$\# Z > 2$	Counts	RMSZ	$\# Z > 2$
2	RET	1-A	301	1	20,20,21	1.24	3 (15%)	27,27,28	1.96	9 (33%)
3	LI1	1-A	601	-	31,31,44	1.13	2 (6%)	32,33,51	1.25	4 (12%)
3	LI1	1-A	602	-	40,40,44	1.00	2 (5%)	44,45,51	1.98	9 (20%)
3	LI1	1-A	603	-	17,17,44	1.06	1 (5%)	18,18,51	1.11	1 (5%)
3	LI1	1-A	604	-	15,15,44	1.12	1 (6%)	14,14,51	1.09	1 (7%)
3	LI1	1-A	605	-	7,7,44	0.43	0	6,6,51	0.52	0
3	LI1	1-A	606	-	7,7,44	0.43	0	6,6,51	0.57	0
3	LI1	1-A	607	-	37,37,44	1.03	2 (5%)	37,38,51	1.03	1 (2%)
3	LI1	1-A	608	-	17,17,44	1.04	1 (5%)	18,18,51	1.16	2 (11%)
3	LI1	1-A	609	-	15,15,44	1.14	1 (6%)	14,14,51	1.12	1 (7%)
3	LI1	1-A	610	-	39,39,44	1.15	2 (5%)	40,41,51	1.17	2 (5%)

Mol	Type	Chain	Res	Link	Bond lengths			Bond angles		
					Counts	RMSZ	# Z > 2	Counts	RMSZ	# Z > 2
3	LI1	1-A	611	-	16,16,44	1.06	1 (6%)	18,18,51	1.83	5 (27%)
3	LI1	1-A	612	-	17,17,44	1.05	1 (5%)	18,18,51	1.17	1 (5%)
3	LI1	1-A	613	-	12,12,44	0.46	0	12,12,51	1.04	1 (8%)
4	SQU	1-A	701	-	26,26,26	1.35	6 (23%)	28,28,28	1.86	11 (39%)
2	RET	2-A	301	1	20,20,21	1.05	1 (5%)	27,27,28	2.29	7 (25%)
3	LI1	2-A	601	-	31,31,44	1.13	2 (6%)	32,33,51	1.25	4 (12%)
3	LI1	2-A	602	-	40,40,44	1.00	2 (5%)	44,45,51	1.98	9 (20%)
3	LI1	2-A	603	-	17,17,44	1.06	1 (5%)	18,18,51	1.11	1 (5%)
3	LI1	2-A	604	-	15,15,44	1.12	1 (6%)	14,14,51	1.09	1 (7%)
3	LI1	2-A	605	-	7,7,44	0.43	0	6,6,51	0.52	0
3	LI1	2-A	606	-	7,7,44	0.43	0	6,6,51	0.57	0
3	LI1	2-A	607	-	37,37,44	1.03	2 (5%)	37,38,51	1.03	1 (2%)
3	LI1	2-A	608	-	17,17,44	1.04	1 (5%)	18,18,51	1.16	2 (11%)
3	LI1	2-A	609	-	15,15,44	1.14	1 (6%)	14,14,51	1.12	1 (7%)
3	LI1	2-A	610	-	39,39,44	1.15	2 (5%)	40,41,51	1.17	2 (5%)
3	LI1	2-A	611	-	16,16,44	1.06	1 (6%)	18,18,51	1.83	5 (27%)
3	LI1	2-A	612	-	17,17,44	1.05	1 (5%)	18,18,51	1.17	1 (5%)
3	LI1	2-A	613	-	12,12,44	0.46	0	12,12,51	1.04	1 (8%)
4	SQU	2-A	701	-	26,26,26	1.35	6 (23%)	28,28,28	1.86	11 (39%)

In the following table, the Chirals column lists the number of chiral outliers, the number of chiral centers analysed, the number of these observed in the model and the number defined in the Chemical Component Dictionary. Similar counts are reported in the Torsion and Rings columns. '-' means no outliers of that kind were identified.

Mol	Type	Chain	Res	Link	Chirals	Torsions	Rings
2	RET	1-A	301	1	-	0/13/30/31	0/1/1/1
3	LI1	1-A	601	-	2/2/3/8	0/32/32/49	0/0/0/0
3	LI1	1-A	602	-	-	0/44/44/49	0/0/0/0
3	LI1	1-A	603	-	-	0/16/16/49	0/0/0/0
3	LI1	1-A	604	-	-	0/13/13/49	0/0/0/0
3	LI1	1-A	605	-	-	0/5/5/49	0/0/0/0
3	LI1	1-A	606	-	-	0/5/5/49	0/0/0/0
3	LI1	1-A	607	-	1/1/2/8	0/38/38/49	0/0/0/0
3	LI1	1-A	608	-	-	0/16/16/49	0/0/0/0
3	LI1	1-A	609	-	-	0/13/13/49	0/0/0/0
3	LI1	1-A	610	-	-	0/39/39/49	0/0/0/0
3	LI1	1-A	611	-	2/2/3/8	0/17/17/49	0/0/0/0

Continued on next page...

Continued from previous page...

Mol	Type	Chain	Res	Link	Chirals	Torsions	Rings
3	LI1	1-A	612	-	-	0/16/16/49	0/0/0/0
3	LI1	1-A	613	-	1/1/1/8	0/11/11/49	0/0/0/0
4	SQU	1-A	701	-	-	0/25/25/25	0/0/0/0
2	RET	2-A	301	1	-	0/13/30/31	0/1/1/1
3	LI1	2-A	601	-	2/2/3/8	0/32/32/49	0/0/0/0
3	LI1	2-A	602	-	-	0/44/44/49	0/0/0/0
3	LI1	2-A	603	-	-	0/16/16/49	0/0/0/0
3	LI1	2-A	604	-	-	0/13/13/49	0/0/0/0
3	LI1	2-A	605	-	-	0/5/5/49	0/0/0/0
3	LI1	2-A	606	-	-	0/5/5/49	0/0/0/0
3	LI1	2-A	607	-	1/1/2/8	0/38/38/49	0/0/0/0
3	LI1	2-A	608	-	-	0/16/16/49	0/0/0/0
3	LI1	2-A	609	-	-	0/13/13/49	0/0/0/0
3	LI1	2-A	610	-	-	0/39/39/49	0/0/0/0
3	LI1	2-A	611	-	2/2/3/8	0/17/17/49	0/0/0/0
3	LI1	2-A	612	-	-	0/16/16/49	0/0/0/0
3	LI1	2-A	613	-	1/1/1/8	0/11/11/49	0/0/0/0
4	SQU	2-A	701	-	-	0/25/25/25	0/0/0/0

The worst 5 of 44 bond length outliers are listed below:

Mol	Chain	Res	Type	Atoms	Z	Observed(Å)	Ideal(Å)
4	2-A	701	SQU	C14-C12	-3.06	1.35	1.52
4	1-A	701	SQU	C14-C12	-3.06	1.35	1.52
4	2-A	701	SQU	C23-C22	-2.88	1.35	1.51
4	1-A	701	SQU	C23-C22	-2.88	1.35	1.51
4	2-A	701	SQU	C18-C17	-2.86	1.35	1.51

The worst 5 of 94 bond angle outliers are listed below:

Mol	Chain	Res	Type	Atoms	Z	Observed(°)	Ideal(°)
2	2-A	301	RET	C20-C13-C12	-8.04	105.28	118.10
2	1-A	301	RET	C11-C10-C9	-5.11	120.02	127.31
3	1-A	602	LI1	C49-C48-C47	-3.75	97.69	111.36
3	2-A	602	LI1	C49-C48-C47	-3.75	97.69	111.36
2	2-A	301	RET	C11-C10-C9	-3.74	121.98	127.31

5 of 12 chirality outliers are listed below:

Mol	Chain	Res	Type	Atom
3	2-A	607	LI1	C43

Continued on next page...

Continued from previous page...

Mol	Chain	Res	Type	Atom
3	2-A	601	LI1	C2
3	2-A	601	LI1	C18
3	1-A	601	LI1	C2
3	1-A	601	LI1	C18

There are no torsion outliers.

There are no ring outliers.

22 monomers are involved in 164 short contacts:

Mol	Chain	Res	Type	Clashes	Symm-Clashes
2	1-A	301	RET	3	0
3	1-A	601	LI1	11	0
3	1-A	602	LI1	24	0
3	1-A	603	LI1	6	0
3	1-A	607	LI1	7	0
3	1-A	608	LI1	1	0
3	1-A	609	LI1	5	0
3	1-A	610	LI1	14	0
3	1-A	611	LI1	5	0
3	1-A	612	LI1	5	0
4	1-A	701	SQU	4	0
2	2-A	301	RET	1	0
3	2-A	601	LI1	11	0
3	2-A	602	LI1	24	0
3	2-A	603	LI1	6	0
3	2-A	607	LI1	7	0
3	2-A	608	LI1	1	0
3	2-A	609	LI1	5	0
3	2-A	610	LI1	14	0
3	2-A	611	LI1	5	0
3	2-A	612	LI1	5	0
4	2-A	701	SQU	4	0

5.7 Other polymers [i](#)

There are no such residues in this entry.

5.8 Polymer linkage issues [i](#)

There are no chain breaks in this entry.

6 Fit of model and data

6.1 Protein, DNA and RNA chains

EDS was not executed - this section is therefore empty.

6.2 Non-standard residues in protein, DNA, RNA chains

EDS was not executed - this section is therefore empty.

6.3 Carbohydrates

EDS was not executed - this section is therefore empty.

6.4 Ligands

EDS was not executed - this section is therefore empty.

6.5 Other polymers

EDS was not executed - this section is therefore empty.