



Full wwPDB X-ray Structure Validation Report ⓘ

Mar 8, 2018 – 08:36 pm GMT

PDB ID : 3M3L
Title : PEPA bound to the ligand binding domain of GluA2 (flop form)
Authors : Ptak, C.P.; Ahmed, A.H.; Oswald, R.E.
Deposited on : 2010-03-09
Resolution : 1.85 Å(reported)

This is a Full wwPDB X-ray Structure Validation Report for a publicly released PDB entry.

We welcome your comments at validation@mail.wwpdb.org

A user guide is available at

<https://www.wwpdb.org/validation/2017/XrayValidationReportHelp>

with specific help available everywhere you see the ⓘ symbol.

The following versions of software and data (see [references ⓘ](#)) were used in the production of this report:

MolProbity : 4.02b-467
Mogul : 1.7.3 (157068), CSD as539be (2018)
Xtriage (Phenix) : 1.13
EDS : trunk30967
Percentile statistics : 20171227.v01 (using entries in the PDB archive December 27th 2017)
Refmac : 5.8.0158
CCP4 : 7.0 (Gargrove)
Ideal geometry (proteins) : Engh & Huber (2001)
Ideal geometry (DNA, RNA) : Parkinson et al. (1996)
Validation Pipeline (wwPDB-VP) : trunk30967

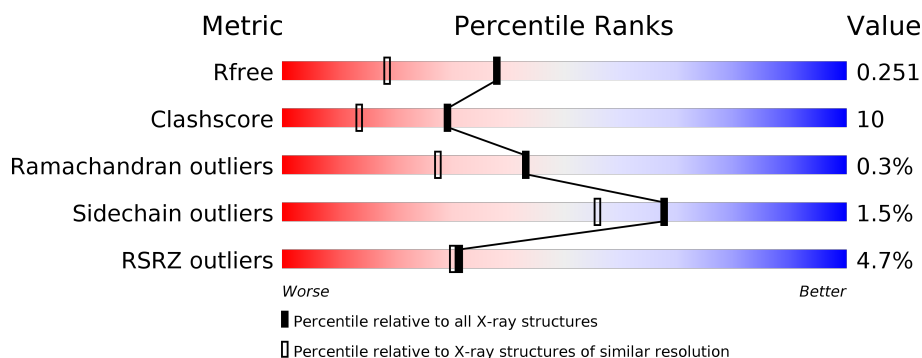
1 Overall quality at a glance

The following experimental techniques were used to determine the structure:

X-RAY DIFFRACTION

The reported resolution of this entry is 1.85 Å.

Percentile scores (ranging between 0-100) for global validation metrics of the entry are shown in the following graphic. The table shows the number of entries on which the scores are based.



Metric	Whole archive (#Entries)	Similar resolution (#Entries, resolution range(Å))
R_{free}	111664	2111 (1.86-1.86)
Clashscore	122126	2258 (1.86-1.86)
Ramachandran outliers	120053	2234 (1.86-1.86)
Sidechain outliers	120020	2234 (1.86-1.86)
RSRZ outliers	108989	2075 (1.86-1.86)

The table below summarises the geometric issues observed across the polymeric chains and their fit to the electron density. The red, orange, yellow and green segments on the lower bar indicate the fraction of residues that contain outliers for ≥ 3 , 2, 1 and 0 types of geometric quality criteria. A grey segment represents the fraction of residues that are not modelled. The numeric value for each fraction is indicated below the corresponding segment, with a dot representing fractions $\leq 5\%$. The upper red bar (where present) indicates the fraction of residues that have poor fit to the electron density. The numeric value is given above the bar.

Mol	Chain	Length	Quality of chain
1	A	258	<div> <div>6%</div> <div> <div></div> <div>86%</div> <div>13%</div> <div></div> </div> </div>
1	D	258	<div> <div>6%</div> <div> <div></div> <div>86%</div> <div>13%</div> <div></div> </div> </div>
1	G	258	<div> <div>2%</div> <div> <div></div> <div>83%</div> <div>15%</div> <div></div> </div> </div>

The following table lists non-polymeric compounds, carbohydrate monomers and non-standard residues in protein, DNA, RNA chains that are outliers for geometric or electron-density-fit criteria:

Mol	Type	Chain	Res	Chirality	Geometry	Clashes	Electron density
3	P99	G	801[A]	-	-	-	X

2 Entry composition

There are 5 unique types of molecules in this entry. The entry contains 7184 atoms, of which 0 are hydrogens and 0 are deuteriums.

In the tables below, the ZeroOcc column contains the number of atoms modelled with zero occupancy, the AltConf column contains the number of residues with at least one atom in alternate conformation and the Trace column contains the number of residues modelled with at most 2 atoms.

- Molecule 1 is a protein called Glutamate receptor 2.

Mol	Chain	Residues	Atoms					ZeroOcc	AltConf	Trace
1	A	258	Total 2018	C 1286	N 336	O 382	S 14	0	0	0
1	D	258	Total 2018	C 1286	N 336	O 382	S 14	0	0	0
1	G	258	Total 2018	C 1286	N 336	O 382	S 14	0	0	0

There are 6 discrepancies between the modelled and reference sequences:

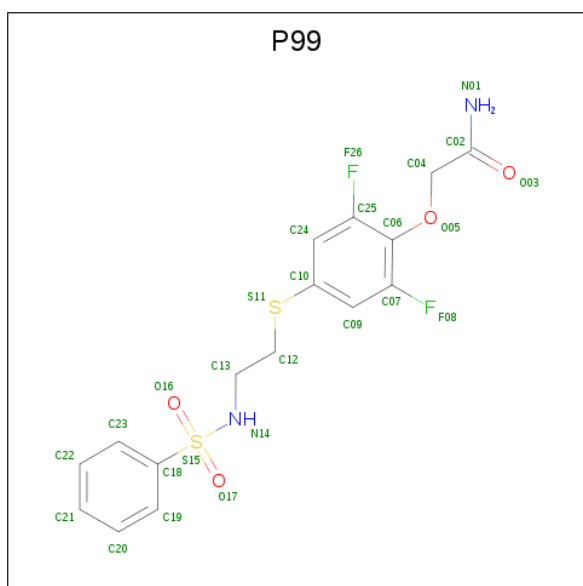
Chain	Residue	Modelled	Actual	Comment	Reference
A	118	GLY	-	linker	UNP P19491
A	119	THR	-	linker	UNP P19491
D	118	GLY	-	linker	UNP P19491
D	119	THR	-	linker	UNP P19491
G	118	GLY	-	linker	UNP P19491
G	119	THR	-	linker	UNP P19491

- Molecule 2 is GLUTAMIC ACID (three-letter code: GLU) (formula: C₅H₉NO₄).



Mol	Chain	Residues	Atoms				ZeroOcc	AltConf
2	A	1	Total	C	N	O	0	0
			10	5	1	4		
2	D	1	Total	C	N	O	0	0
			10	5	1	4		
2	G	1	Total	C	N	O	0	0
			10	5	1	4		

- Molecule 3 is 2-[2,6-difluoro-4-({2-[(phenylsulfonyl)amino]ethyl}sulfanyl)phenoxy]acetamide (three-letter code: P99) (formula: C₁₆H₁₆F₂N₂O₄S₂).



Mol	Chain	Residues	Atoms						ZeroOcc	AltConf
3	A	1	Total	C	F	N	O	S	0	1
			52	32	4	4	8	4		
3	G	1	Total	C	F	N	O	S	0	1
			26	16	2	2	4	2		

- Molecule 4 is ZINC ION (three-letter code: ZN) (formula: Zn).

Mol	Chain	Residues	Atoms		ZeroOcc	AltConf
4	G	1	Total	Zn	0	0
			1	1		
4	A	1	Total	Zn	0	0
			1	1		
4	D	3	Total	Zn	0	0
			3	3		

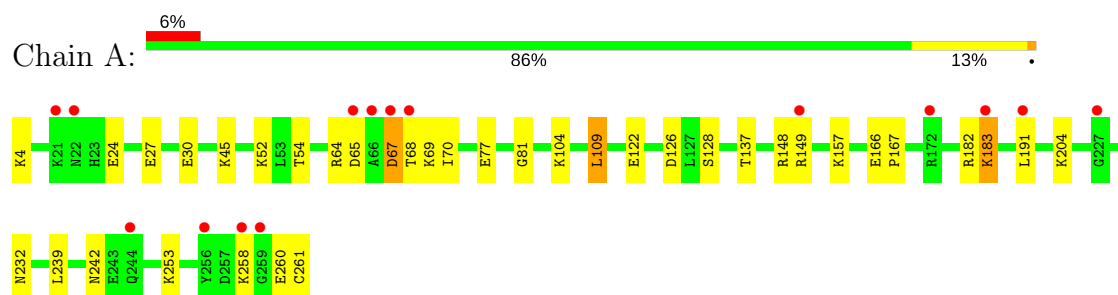
- Molecule 5 is water.

Mol	Chain	Residues	Atoms		ZeroOcc	AltConf
5	A	333	Total	O	0	0
			333	333		
5	D	320	Total	O	0	0
			320	320		
5	G	364	Total	O	0	0
			364	364		

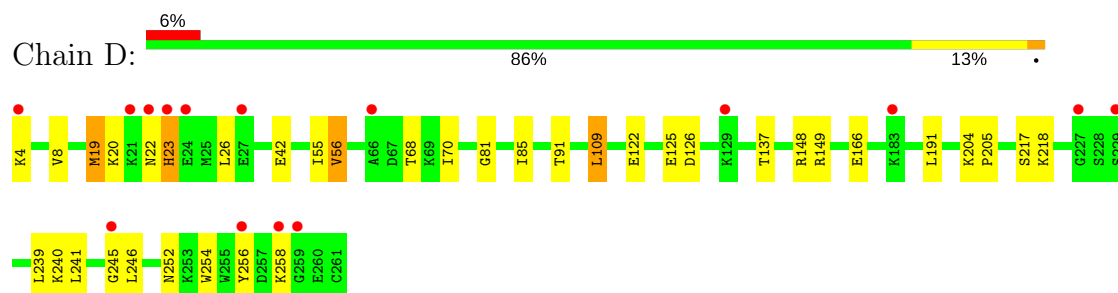
3 Residue-property plots [i](#)

These plots are drawn for all protein, RNA and DNA chains in the entry. The first graphic for a chain summarises the proportions of the various outlier classes displayed in the second graphic. The second graphic shows the sequence view annotated by issues in geometry and electron density. Residues are color-coded according to the number of geometric quality criteria for which they contain at least one outlier: green = 0, yellow = 1, orange = 2 and red = 3 or more. A red dot above a residue indicates a poor fit to the electron density ($RSRZ > 2$). Stretches of 2 or more consecutive residues without any outlier are shown as a green connector. Residues present in the sample, but not in the model, are shown in grey.

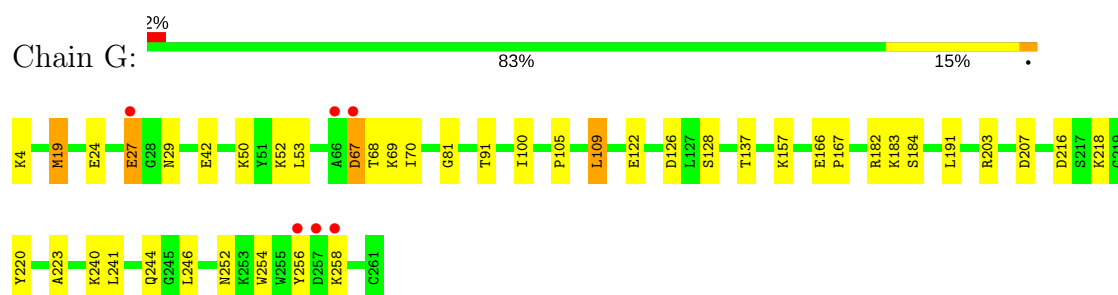
• Molecule 1: Glutamate receptor 2



• Molecule 1: Glutamate receptor 2



• Molecule 1: Glutamate receptor 2



4 Data and refinement statistics

Property	Value	Source
Space group	P 2 ₁ 2 ₁ 2 ₁	Depositor
Cell constants a, b, c, α , β , γ	47.13Å 113.92Å 164.81Å 90.00° 90.00° 90.00°	Depositor
Resolution (Å)	25.29 – 1.85 25.28 – 1.86	Depositor EDS
% Data completeness (in resolution range)	92.3 (25.29-1.85) 92.3 (25.28-1.86)	Depositor EDS
R_{merge}	0.12	Depositor
R_{sym}	0.12	Depositor
$\langle I/\sigma(I) \rangle$ ¹	3.23 (at 1.85Å)	Xtriage
Refinement program	PHENIX (phenix.refine)	Depositor
R, R_{free}	0.187 , 0.242 0.211 , 0.251	Depositor DCC
R_{free} test set	2000 reflections (2.85%)	wwPDB-VP
Wilson B-factor (Å ²)	20.7	Xtriage
Anisotropy	0.305	Xtriage
Bulk solvent k_{sol} (e/Å ³), B_{sol} (Å ²)	0.35 , 53.1	EDS
L-test for twinning ²	$\langle L \rangle = 0.49$, $\langle L^2 \rangle = 0.32$	Xtriage
Estimated twinning fraction	No twinning to report.	Xtriage
F_o, F_c correlation	0.94	EDS
Total number of atoms	7184	wwPDB-VP
Average B, all atoms (Å ²)	25.0	wwPDB-VP

Xtriage's analysis on translational NCS is as follows: *The largest off-origin peak in the Patterson function is 13.89% of the height of the origin peak. No significant pseudotranslation is detected.*

¹Intensities estimated from amplitudes.

²Theoretical values of $\langle |L| \rangle$, $\langle L^2 \rangle$ for acentric reflections are 0.5, 0.333 respectively for untwinned datasets, and 0.375, 0.2 for perfectly twinned datasets.

5 Model quality

5.1 Standard geometry

Bond lengths and bond angles in the following residue types are not validated in this section: P99, ZN

The Z score for a bond length (or angle) is the number of standard deviations the observed value is removed from the expected value. A bond length (or angle) with $|Z| > 5$ is considered an outlier worth inspection. RMSZ is the root-mean-square of all Z scores of the bond lengths (or angles).

Mol	Chain	Bond lengths		Bond angles	
		RMSZ	$\# Z > 5$	RMSZ	$\# Z > 5$
1	A	0.53	1/2054 (0.0%)	0.61	1/2762 (0.0%)
1	D	0.51	1/2054 (0.0%)	0.61	0/2762
1	G	0.57	1/2054 (0.0%)	0.65	0/2762
All	All	0.54	3/6162 (0.0%)	0.62	1/8286 (0.0%)

All (3) bond length outliers are listed below:

Mol	Chain	Res	Type	Atoms	Z	Observed(Å)	Ideal(Å)
1	G	244	GLN	C-N	-6.07	1.22	1.33
1	D	149	ARG	C-N	-5.80	1.20	1.34
1	A	183	LYS	C-N	-5.67	1.21	1.34

All (1) bond angle outliers are listed below:

Mol	Chain	Res	Type	Atoms	Z	Observed(°)	Ideal(°)
1	A	182	ARG	C-N-CA	5.31	134.98	121.70

There are no chirality outliers.

There are no planarity outliers.

5.2 Too-close contacts

In the following table, the Non-H and H(model) columns list the number of non-hydrogen atoms and hydrogen atoms in the chain respectively. The H(added) column lists the number of hydrogen atoms added and optimized by MolProbity. The Clashes column lists the number of clashes within the asymmetric unit, whereas Symm-Clashes lists symmetry related clashes.

Mol	Chain	Non-H	H(model)	H(added)	Clashes	Symm-Clashes
1	A	2018	0	2049	45	0

Continued on next page...

Continued from previous page...

Mol	Chain	Non-H	H(model)	H(added)	Clashes	Symm-Clashes
1	D	2018	0	2050	33	0
1	G	2018	0	2049	45	0
2	A	10	0	5	0	0
2	D	10	0	5	1	0
2	G	10	0	5	1	0
3	A	52	0	32	11	0
3	G	26	0	16	4	0
4	A	1	0	0	0	0
4	D	3	0	0	0	0
4	G	1	0	0	0	0
5	A	333	0	0	20	0
5	D	320	0	0	12	0
5	G	364	0	0	17	0
All	All	7184	0	6211	127	0

The all-atom clashscore is defined as the number of clashes found per 1000 atoms (including hydrogen atoms). The all-atom clashscore for this structure is 10.

All (127) close contacts within the same asymmetric unit are listed below, sorted by their clash magnitude.

Atom-1	Atom-2	Interatomic distance (Å)	Clash overlap (Å)
1:G:241:LEU:HD22	1:G:246:LEU:HD23	1.24	1.16
1:G:105:PRO:HG3	3:G:801[A]:P99:O16	1.53	1.07
1:D:252:ASN:HB3	5:D:432:HOH:O	1.59	1.02
1:D:241:LEU:HD22	1:D:246:LEU:HD23	1.47	0.97
3:G:801[A]:P99:N01	5:G:436:HOH:O	1.94	0.97
1:G:240:LYS:HE3	5:G:1005:HOH:O	1.65	0.94
1:G:252:ASN:HB3	5:G:541:HOH:O	1.71	0.88
1:A:183:LYS:HG3	5:A:490:HOH:O	1.74	0.88
1:G:183:LYS:O	1:G:183:LYS:HG2	1.83	0.77
1:G:241:LEU:CD2	1:G:246:LEU:HD23	2.11	0.77
1:G:256:TYR:HE2	5:G:310:HOH:O	1.68	0.75
1:G:19:MET:HG3	5:G:421:HOH:O	1.87	0.75
1:G:29:ASN:HD21	1:G:53:LEU:H	1.34	0.74
1:A:24:GLU:HG3	5:A:762:HOH:O	1.89	0.72
1:G:105:PRO:CG	3:G:801[A]:P99:O16	2.35	0.72
1:D:68:THR:HG22	1:D:70:ILE:HG13	1.69	0.72
1:A:148:ARG:HD3	1:A:149:ARG:HH12	1.55	0.72
1:A:52:LYS:HE3	1:A:54:THR:HG22	1.70	0.72
1:A:157:LYS:HD2	5:A:894:HOH:O	1.91	0.71
1:G:183:LYS:HB2	5:G:754:HOH:O	1.90	0.71

Continued on next page...

Continued from previous page...

Atom-1	Atom-2	Interatomic distance (Å)	Clash overlap (Å)
1:A:77:GLU:HG2	5:A:398:HOH:O	1.90	0.71
1:D:125:GLU:HB3	5:D:748:HOH:O	1.90	0.70
1:G:182:ARG:HG2	1:G:207:ASP:OD2	1.91	0.70
1:D:42:GLU:HG3	1:D:246:LEU:HD21	1.74	0.69
1:A:239:LEU:HA	3:A:800[B]:P99:H22	1.73	0.69
1:D:241:LEU:HD22	1:D:246:LEU:CD2	2.22	0.68
1:G:256:TYR:HB3	5:G:632:HOH:O	1.92	0.67
1:D:137:THR:HG22	1:D:191:LEU:HB2	1.77	0.67
1:A:68:THR:HB	5:A:353:HOH:O	1.96	0.66
1:D:23:HIS:O	1:D:26:LEU:N	2.25	0.66
1:G:203:ARG:HB2	5:G:438:HOH:O	1.95	0.65
1:A:24:GLU:H	1:A:24:GLU:CD	2.02	0.63
1:D:258:LYS:HE3	5:D:568:HOH:O	1.99	0.62
1:D:4:LYS:N	5:D:953:HOH:O	2.32	0.62
1:G:166:GLU:HA	1:G:166:GLU:OE2	2.00	0.62
1:G:68:THR:HG22	1:G:70:ILE:HG13	1.81	0.62
1:G:42:GLU:HG3	1:G:246:LEU:HD21	1.83	0.60
1:A:122:GLU:HG2	1:A:126:ASP:OD2	2.00	0.60
3:A:800[A]:P99:H22	1:D:239:LEU:HA	1.84	0.60
1:G:256:TYR:CE2	5:G:310:HOH:O	2.49	0.59
1:G:100:ILE:HD12	1:G:223:ALA:HB1	1.85	0.58
1:D:122:GLU:HG2	1:D:126:ASP:OD2	2.03	0.58
1:A:24:GLU:CG	5:A:762:HOH:O	2.49	0.58
1:D:68:THR:HG23	5:D:887:HOH:O	2.04	0.58
1:G:184:SER:HB2	5:G:306:HOH:O	2.04	0.57
1:A:45:LYS:HE3	5:A:410:HOH:O	2.03	0.57
1:A:239:LEU:HA	3:A:800[B]:P99:C22	2.34	0.57
1:G:42:GLU:CG	1:G:246:LEU:HD21	2.35	0.57
1:A:239:LEU:HD23	3:A:800[B]:P99:C22	2.34	0.56
1:G:183:LYS:O	1:G:183:LYS:CG	2.51	0.56
1:G:42:GLU:CD	1:G:246:LEU:HD21	2.25	0.56
1:A:148:ARG:HD3	1:A:149:ARG:NH1	2.20	0.55
1:A:27:GLU:HG2	5:A:919:HOH:O	2.06	0.55
1:G:24:GLU:HG3	5:G:558:HOH:O	2.06	0.54
1:G:29:ASN:ND2	1:G:53:LEU:H	2.04	0.54
1:D:148:ARG:O	1:D:148:ARG:HG2	2.08	0.53
1:G:122:GLU:HG2	1:G:126:ASP:OD2	2.08	0.52
1:A:148:ARG:CD	1:A:149:ARG:NH1	2.73	0.52
1:G:67:ASP:OD1	1:G:67:ASP:N	2.39	0.52
1:A:68:THR:HG22	1:A:70:ILE:HG13	1.92	0.52
1:G:254:TRP:O	1:G:258:LYS:HG3	2.09	0.52

Continued on next page...

Continued from previous page...

Atom-1	Atom-2	Interatomic distance (Å)	Clash overlap (Å)
1:A:77:GLU:CG	5:A:398:HOH:O	2.52	0.52
1:D:4:LYS:HE2	5:D:751:HOH:O	2.08	0.52
1:A:128:SER:O	1:A:157:LYS:HE3	2.10	0.52
1:A:81:GLY:HA2	5:A:318:HOH:O	2.09	0.52
1:A:109:LEU:HD22	1:A:109:LEU:C	2.31	0.51
1:A:232:ASN:HB2	5:A:841:HOH:O	2.11	0.51
1:A:253:LYS:O	1:A:258:LYS:HG2	2.11	0.51
1:D:68:THR:CG2	1:D:70:ILE:HG13	2.40	0.51
1:A:204:LYS:HG3	1:A:260:GLU:HG3	1.93	0.50
1:D:245:GLY:HA2	5:D:305:HOH:O	2.11	0.50
1:A:77:GLU:CD	5:A:332:HOH:O	2.50	0.49
1:A:258:LYS:HB3	5:A:524:HOH:O	2.11	0.49
1:A:68:THR:O	1:A:69:LYS:HB2	2.12	0.49
1:D:256:TYR:HB3	5:D:874:HOH:O	2.11	0.48
1:G:182:ARG:NH2	5:G:438:HOH:O	2.36	0.48
1:D:205:PRO:HG3	5:D:903:HOH:O	2.13	0.48
1:D:166:GLU:HB3	5:D:540:HOH:O	2.15	0.47
1:D:55:ILE:O	1:D:56:VAL:C	2.53	0.47
1:G:4:LYS:N	5:G:528:HOH:O	2.47	0.47
1:A:137:THR:HG22	1:A:191:LEU:HB2	1.97	0.47
3:A:800[A]:P99:C22	1:D:239:LEU:HA	2.45	0.47
1:G:50:LYS:CE	5:G:1018:HOH:O	2.61	0.46
1:A:64:ARG:HG2	1:A:69:LYS:HA	1.95	0.46
1:A:183:LYS:HE3	5:A:490:HOH:O	2.14	0.46
1:A:4:LYS:N	5:A:304:HOH:O	2.48	0.46
3:A:800[A]:P99:H12	3:A:800[A]:P99:H24	1.85	0.46
1:D:81:GLY:HA2	5:D:526:HOH:O	2.16	0.46
1:A:242:ASN:HD22	3:A:800[B]:P99:C21	2.29	0.46
1:A:30:GLU:HG2	5:A:547:HOH:O	2.16	0.46
1:G:81:GLY:HA2	5:G:382:HOH:O	2.16	0.46
1:A:52:LYS:HE3	1:A:54:THR:CG2	2.44	0.45
1:D:91:THR:HG1	2:D:400:GLU:N	2.15	0.45
1:G:137:THR:HG22	1:G:191:LEU:HB2	1.98	0.45
1:D:254:TRP:O	1:D:258:LYS:HG3	2.17	0.44
1:G:52:LYS:HD2	5:G:596:HOH:O	2.17	0.44
1:G:68:THR:O	1:G:69:LYS:HB2	2.17	0.44
1:A:67:ASP:N	1:A:67:ASP:OD1	2.47	0.44
1:D:204:LYS:NZ	5:D:445:HOH:O	2.51	0.44
1:G:105:PRO:HA	1:G:220:TYR:O	2.18	0.43
1:A:242:ASN:HB3	3:A:800[B]:P99:C22	2.48	0.43
1:A:166:GLU:HA	1:A:167:PRO:C	2.38	0.43

Continued on next page...

Continued from previous page...

Atom-1	Atom-2	Interatomic distance (Å)	Clash overlap (Å)
1:G:42:GLU:CD	1:G:246:LEU:CD2	2.86	0.43
1:A:242:ASN:CB	3:A:800[B]:P99:C22	2.96	0.43
1:A:68:THR:CB	5:A:353:HOH:O	2.59	0.43
1:D:109:LEU:C	1:D:109:LEU:HD22	2.40	0.43
1:G:19:MET:HB3	1:G:19:MET:HE2	1.85	0.42
3:A:800[B]:P99:H12	3:A:800[B]:P99:H24	1.78	0.42
3:G:801[A]:P99:H12	3:G:801[A]:P99:H24	1.85	0.42
1:A:45:LYS:NZ	5:A:263:HOH:O	2.36	0.42
1:G:27:GLU:HG3	5:G:882:HOH:O	2.20	0.42
1:G:256:TYR:CD2	1:G:256:TYR:N	2.85	0.41
1:A:104:LYS:HB3	3:A:800[B]:P99:O16	2.20	0.41
1:G:166:GLU:HA	1:G:167:PRO:C	2.40	0.41
1:D:20:LYS:CB	1:D:22:ASN:O	2.69	0.41
1:D:148:ARG:O	1:D:148:ARG:CG	2.67	0.41
1:D:19:MET:HB3	1:D:19:MET:HE3	1.88	0.41
1:D:8:VAL:HG22	1:D:85:ILE:CG2	2.50	0.41
1:A:24:GLU:N	1:A:24:GLU:CD	2.73	0.41
5:A:469:HOH:O	1:D:217:SER:HB3	2.21	0.41
1:G:128:SER:O	1:G:157:LYS:HE3	2.21	0.41
1:G:216:ASP:OD2	1:G:218:LYS:HD3	2.21	0.41
1:G:109:LEU:C	1:G:109:LEU:HD22	2.41	0.40
1:D:42:GLU:CG	1:D:246:LEU:HD21	2.47	0.40
1:A:261:CYS:C	5:A:273:HOH:O	2.60	0.40
1:A:65:ASP:OD1	1:A:67:ASP:OD1	2.40	0.40
1:G:91:THR:HG1	2:G:400:GLU:N	2.20	0.40

There are no symmetry-related clashes.

5.3 Torsion angles ⓘ

5.3.1 Protein backbone ⓘ

In the following table, the Percentiles column shows the percent Ramachandran outliers of the chain as a percentile score with respect to all X-ray entries followed by that with respect to entries of similar resolution.

The Analysed column shows the number of residues for which the backbone conformation was analysed, and the total number of residues.

Mol	Chain	Analysed	Favoured	Allowed	Outliers	Percentiles	
1	A	256/258 (99%)	249 (97%)	7 (3%)	0	100	100

Continued on next page...

Continued from previous page...

Mol	Chain	Analysed	Favoured	Allowed	Outliers	Percentiles	
1	D	256/258 (99%)	246 (96%)	8 (3%)	2 (1%)	21	8
1	G	256/258 (99%)	251 (98%)	5 (2%)	0	100	100
All	All	768/774 (99%)	746 (97%)	20 (3%)	2 (0%)	43	27

All (2) Ramachandran outliers are listed below:

Mol	Chain	Res	Type
1	D	23	HIS
1	D	56	VAL

5.3.2 Protein sidechains ⓘ

In the following table, the Percentiles column shows the percent sidechain outliers of the chain as a percentile score with respect to all X-ray entries followed by that with respect to entries of similar resolution.

The Analysed column shows the number of residues for which the sidechain conformation was analysed, and the total number of residues.

Mol	Chain	Analysed	Rotameric	Outliers	Percentiles	
1	A	217/217 (100%)	215 (99%)	2 (1%)	81	75
1	D	217/217 (100%)	213 (98%)	4 (2%)	62	47
1	G	217/217 (100%)	213 (98%)	4 (2%)	62	47
All	All	651/651 (100%)	641 (98%)	10 (2%)	67	56

All (10) residues with a non-rotameric sidechain are listed below:

Mol	Chain	Res	Type
1	A	67	ASP
1	A	109	LEU
1	D	19	MET
1	D	109	LEU
1	D	218	LYS
1	D	240	LYS
1	G	19	MET
1	G	27	GLU
1	G	67	ASP
1	G	109	LEU

Some sidechains can be flipped to improve hydrogen bonding and reduce clashes. All (3) such

sidechains are listed below:

Mol	Chain	Res	Type
1	A	242	ASN
1	D	244	GLN
1	G	29	ASN

5.3.3 RNA ⓘ

There are no RNA molecules in this entry.

5.4 Non-standard residues in protein, DNA, RNA chains ⓘ

There are no non-standard protein/DNA/RNA residues in this entry.

5.5 Carbohydrates ⓘ

There are no carbohydrates in this entry.

5.6 Ligand geometry ⓘ

Of 11 ligands modelled in this entry, 5 are monoatomic - leaving 6 for Mogul analysis.

In the following table, the Counts columns list the number of bonds (or angles) for which Mogul statistics could be retrieved, the number of bonds (or angles) that are observed in the model and the number of bonds (or angles) that are defined in the Chemical Component Dictionary. The Link column lists molecule types, if any, to which the group is linked. The Z score for a bond length (or angle) is the number of standard deviations the observed value is removed from the expected value. A bond length (or angle) with $|Z| > 2$ is considered an outlier worth inspection. RMSZ is the root-mean-square of all Z scores of the bond lengths (or angles).

Mol	Type	Chain	Res	Link	Bond lengths			Bond angles		
					Counts	RMSZ	# Z > 2	Counts	RMSZ	# Z > 2
2	GLU	A	400	-	1,9,9	0.46	0	1,11,11	0.37	0
3	P99	A	800[A]	-	27,27,27	7.99	18 (66%)	36,37,37	1.83	6 (16%)
3	P99	A	800[B]	-	27,27,27	8.23	18 (66%)	36,37,37	1.80	6 (16%)
2	GLU	D	400	-	1,9,9	0.02	0	1,11,11	0.06	0
2	GLU	G	400	-	1,9,9	0.40	0	1,11,11	0.27	0
3	P99	G	801[A]	-	27,27,27	8.00	18 (66%)	36,37,37	1.83	7 (19%)

In the following table, the Chirals column lists the number of chiral outliers, the number of chiral centers analysed, the number of these observed in the model and the number defined in the

Chemical Component Dictionary. Similar counts are reported in the Torsion and Rings columns.
'-' means no outliers of that kind were identified.

Mol	Type	Chain	Res	Link	Chirals	Torsions	Rings
2	GLU	A	400	-	-	0/3/9/9	0/0/0/0
3	P99	A	800[A]	-	-	0/19/19/19	0/2/2/2
3	P99	A	800[B]	-	-	0/19/19/19	0/2/2/2
2	GLU	D	400	-	-	0/3/9/9	0/0/0/0
2	GLU	G	400	-	-	0/3/9/9	0/0/0/0
3	P99	G	801[A]	-	-	0/19/19/19	0/2/2/2

All (54) bond length outliers are listed below:

Mol	Chain	Res	Type	Atoms	Z	Observed(Å)	Ideal(Å)
3	A	800[A]	P99	C10-S11	2.03	1.80	1.76
3	G	801[A]	P99	C10-S11	2.05	1.80	1.76
3	G	801[A]	P99	C18-S15	2.42	1.80	1.76
3	A	800[A]	P99	C18-S15	2.43	1.80	1.76
3	A	800[B]	P99	C10-S11	2.49	1.81	1.76
3	A	800[B]	P99	C18-S15	3.41	1.81	1.76
3	A	800[A]	P99	C02-N01	4.20	1.46	1.32
3	G	801[A]	P99	C02-N01	4.21	1.46	1.32
3	A	800[B]	P99	C02-N01	4.50	1.47	1.32
3	G	801[A]	P99	C21-C22	6.37	1.53	1.38
3	A	800[A]	P99	C21-C22	6.37	1.53	1.38
3	A	800[B]	P99	C21-C22	6.74	1.54	1.38
3	A	800[B]	P99	C20-C21	6.84	1.54	1.38
3	A	800[A]	P99	C20-C21	6.89	1.54	1.38
3	G	801[A]	P99	C20-C21	6.90	1.54	1.38
3	A	800[A]	P99	C06-C07	7.03	1.54	1.39
3	G	801[A]	P99	C06-C07	7.06	1.54	1.39
3	G	801[A]	P99	C20-C19	7.11	1.52	1.38
3	A	800[A]	P99	C20-C19	7.12	1.52	1.38
3	A	800[A]	P99	C22-C23	7.24	1.53	1.38
3	G	801[A]	P99	C22-C23	7.25	1.53	1.38
3	A	800[B]	P99	C06-C07	7.37	1.55	1.39
3	A	800[B]	P99	C06-C25	7.41	1.55	1.39
3	A	800[B]	P99	C22-C23	7.56	1.53	1.38
3	A	800[A]	P99	C06-C25	7.77	1.55	1.39
3	G	801[A]	P99	C06-C25	7.78	1.55	1.39
3	A	800[A]	P99	C24-C10	7.93	1.53	1.39
3	G	801[A]	P99	C24-C10	7.93	1.53	1.39
3	A	800[B]	P99	C20-C19	7.96	1.54	1.38
3	G	801[A]	P99	S15-N14	8.09	1.72	1.61
3	A	800[A]	P99	S15-N14	8.09	1.72	1.61

Continued on next page...

Continued from previous page...

Mol	Chain	Res	Type	Atoms	Z	Observed(Å)	Ideal(Å)
3	A	800[B]	P99	C24-C10	8.15	1.53	1.39
3	A	800[B]	P99	S15-N14	8.24	1.72	1.61
3	A	800[A]	P99	C09-C10	8.77	1.54	1.39
3	G	801[A]	P99	C09-C10	8.78	1.54	1.39
3	G	801[A]	P99	C19-C18	8.86	1.52	1.38
3	A	800[A]	P99	C19-C18	8.89	1.53	1.38
3	A	800[B]	P99	C24-C25	9.07	1.53	1.37
3	G	801[A]	P99	C24-C25	9.27	1.53	1.37
3	A	800[A]	P99	C24-C25	9.28	1.53	1.37
3	A	800[B]	P99	C09-C10	9.36	1.55	1.39
3	G	801[A]	P99	C23-C18	9.36	1.53	1.38
3	A	800[A]	P99	C23-C18	9.36	1.53	1.38
3	G	801[A]	P99	C09-C07	9.67	1.54	1.37
3	A	800[B]	P99	C19-C18	9.69	1.54	1.38
3	A	800[A]	P99	C09-C07	9.70	1.54	1.37
3	A	800[B]	P99	C23-C18	9.76	1.54	1.38
3	A	800[B]	P99	C09-C07	10.57	1.55	1.37
3	A	800[A]	P99	O16-S15	20.35	1.65	1.43
3	G	801[A]	P99	O16-S15	20.38	1.65	1.43
3	A	800[B]	P99	O16-S15	20.38	1.65	1.43
3	A	800[A]	P99	O17-S15	20.47	1.65	1.43
3	G	801[A]	P99	O17-S15	20.55	1.65	1.43
3	A	800[B]	P99	O17-S15	20.94	1.65	1.43

All (19) bond angle outliers are listed below:

Mol	Chain	Res	Type	Atoms	Z	Observed(°)	Ideal(°)
3	A	800[B]	P99	O17-S15-O16	-7.27	110.43	119.56
3	A	800[A]	P99	O17-S15-O16	-6.71	111.13	119.56
3	G	801[A]	P99	O17-S15-O16	-6.71	111.13	119.56
3	G	801[A]	P99	C13-N14-S15	-3.29	109.09	120.34
3	A	800[A]	P99	C13-N14-S15	-3.29	109.09	120.34
3	A	800[B]	P99	C13-N14-S15	-3.10	109.71	120.34
3	A	800[A]	P99	C09-C07-C06	-2.10	120.12	123.23
3	G	801[A]	P99	C09-C07-C06	-2.10	120.13	123.23
3	A	800[B]	P99	C09-C07-C06	-2.03	120.22	123.23
3	G	801[A]	P99	O16-S15-C18	2.01	110.41	107.95
3	A	800[B]	P99	O16-S15-N14	2.42	110.88	107.03
3	A	800[B]	P99	C10-C24-C25	2.68	120.10	118.06
3	G	801[A]	P99	C04-O05-C06	2.75	122.68	114.75
3	A	800[A]	P99	C04-O05-C06	2.76	122.72	114.75
3	A	800[A]	P99	F26-C25-C06	2.87	121.61	117.57

Continued on next page...

Continued from previous page...

Mol	Chain	Res	Type	Atoms	Z	Observed(°)	Ideal(°)
3	G	801[A]	P99	F26-C25-C06	2.88	121.63	117.57
3	G	801[A]	P99	O16-S15-N14	2.97	111.75	107.03
3	A	800[A]	P99	O16-S15-N14	2.97	111.76	107.03
3	A	800[B]	P99	C04-O05-C06	3.30	124.28	114.75

There are no chirality outliers.

There are no torsion outliers.

There are no ring outliers.

5 monomers are involved in 17 short contacts:

Mol	Chain	Res	Type	Clashes	Symm-Clashes
3	A	800[A]	P99	3	0
3	A	800[B]	P99	8	0
2	D	400	GLU	1	0
2	G	400	GLU	1	0
3	G	801[A]	P99	4	0

5.7 Other polymers [i](#)

There are no such residues in this entry.

5.8 Polymer linkage issues [i](#)

There are no chain breaks in this entry.

6 Fit of model and data

6.1 Protein, DNA and RNA chains

In the following table, the column labelled ‘#RSRZ > 2’ contains the number (and percentage) of RSRZ outliers, followed by percent RSRZ outliers for the chain as percentile scores relative to all X-ray entries and entries of similar resolution. The OWAB column contains the minimum, median, 95th percentile and maximum values of the occupancy-weighted average B-factor per residue. The column labelled ‘Q < 0.9’ lists the number of (and percentage) of residues with an average occupancy less than 0.9.

Mol	Chain	Analysed	<RSRZ>	#RSRZ>2		OWAB(Å ²)	Q<0.9
1	A	258/258 (100%)	0.27	15 (5%)	23 23	15, 22, 39, 60	0
1	D	258/258 (100%)	0.29	15 (5%)	23 23	15, 23, 39, 47	0
1	G	258/258 (100%)	0.19	6 (2%)	60 59	13, 20, 35, 56	0
All	All	774/774 (100%)	0.25	36 (4%)	31 30	13, 22, 38, 60	0

All (36) RSRZ outliers are listed below:

Mol	Chain	Res	Type	RSRZ
1	A	66	ALA	6.8
1	D	256	TYR	5.4
1	A	67	ASP	4.8
1	G	256	TYR	4.7
1	G	67	ASP	4.6
1	A	256	TYR	4.0
1	G	66	ALA	3.8
1	A	172	ARG	3.8
1	A	68	THR	3.7
1	D	183	LYS	3.7
1	A	258	LYS	3.5
1	D	227	GLY	3.5
1	D	258	LYS	3.4
1	D	24	GLU	3.2
1	D	23	HIS	3.0
1	D	245	GLY	3.0
1	D	21	LYS	3.0
1	G	258	LYS	2.9
1	D	27	GLU	2.9
1	G	27	GLU	2.7
1	A	227	GLY	2.5
1	D	22	ASN	2.5
1	A	259	GLY	2.5

Continued on next page...

Continued from previous page...

Mol	Chain	Res	Type	RSRZ
1	D	259	GLY	2.5
1	G	257	ASP	2.4
1	A	183	LYS	2.4
1	A	244	GLN	2.4
1	D	229	SER	2.4
1	A	21	LYS	2.3
1	A	191	LEU	2.3
1	A	65	ASP	2.3
1	A	149	ARG	2.2
1	D	4	LYS	2.2
1	D	129	LYS	2.2
1	A	22	ASN	2.1
1	D	66	ALA	2.1

6.2 Non-standard residues in protein, DNA, RNA chains [i](#)

There are no non-standard protein/DNA/RNA residues in this entry.

6.3 Carbohydrates [i](#)

There are no carbohydrates in this entry.

6.4 Ligands [i](#)

In the following table, the Atoms column lists the number of modelled atoms in the group and the number defined in the chemical component dictionary. The B-factors column lists the minimum, median, 95th percentile and maximum values of B factors of atoms in the group. The column labelled 'Q< 0.9' lists the number of atoms with occupancy less than 0.9.

Mol	Type	Chain	Res	Atoms	RSCC	RSR	B-factors(\AA^2)	Q<0.9
3	P99	G	801[A]	26/26	0.59	0.45	14,20,25,27	26
4	ZN	D	1	1/1	0.71	0.30	3,3,3,3	0
4	ZN	A	262	1/1	0.77	0.32	2,2,2,2	0
4	ZN	G	3	1/1	0.81	0.18	22,22,22,22	0
3	P99	A	800[B]	26/26	0.82	0.31	21,24,27,28	26
3	P99	A	800[A]	26/26	0.82	0.31	14,20,25,27	26
4	ZN	D	262	1/1	0.94	0.14	39,39,39,39	0
2	GLU	D	400	10/10	0.95	0.12	14,16,22,23	0
2	GLU	A	400	10/10	0.96	0.11	13,16,20,20	0
2	GLU	G	400	10/10	0.98	0.12	12,14,18,19	0

Continued on next page...

Continued from previous page...

Mol	Type	Chain	Res	Atoms	RSCC	RSR	B-factors(\AA^2)	Q<0.9
4	ZN	D	2	1/1	0.98	0.34	16,16,16,16	0

6.5 Other polymers [i](#)

There are no such residues in this entry.