



Full wwPDB X-ray Structure Validation Report ⓘ

Mar 14, 2018 – 01:11 am GMT

PDB ID : 4MCQ
Title : A high resolution structure of human glutamate carboxypeptidase II (GCP II) in complex with folyl-di-gamma-L-glutamic acid (pteroyltri-gamma-L-glutamic acid)
Authors : Navratil, M.; Barinka, C.
Deposited on : 2013-08-21
Resolution : 2.00 Å (reported)

This is a Full wwPDB X-ray Structure Validation Report for a publicly released PDB entry.

We welcome your comments at validation@mail.wwpdb.org

A user guide is available at

<https://www.wwpdb.org/validation/2017/XrayValidationReportHelp>

with specific help available everywhere you see the ⓘ symbol.

The following versions of software and data (see [references ⓘ](#)) were used in the production of this report:

MolProbity : 4.02b-467
Mogul : 1.7.3 (157068), CSD as539be (2018)
Xtriage (Phenix) : 1.13
EDS : trunk31020
Percentile statistics : 20171227.v01 (using entries in the PDB archive December 27th 2017)
Refmac : 5.8.0158
CCP4 : 7.0 (Gargrove)
Ideal geometry (proteins) : Engh & Huber (2001)
Ideal geometry (DNA, RNA) : Parkinson et al. (1996)
Validation Pipeline (wwPDB-VP) : trunk31020

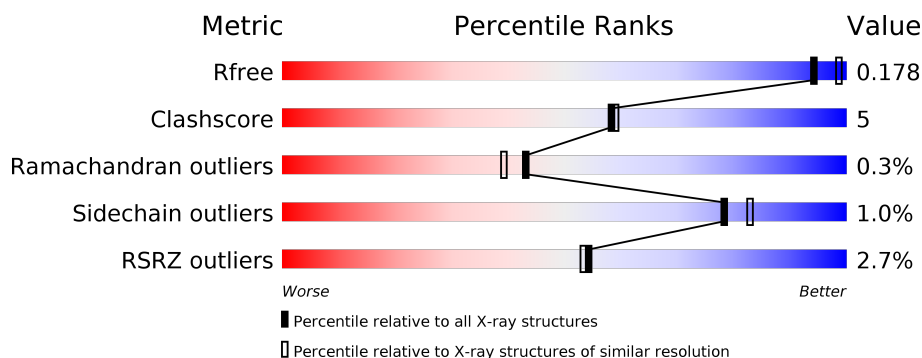
1 Overall quality at a glance

The following experimental techniques were used to determine the structure:

X-RAY DIFFRACTION

The reported resolution of this entry is 2.00 Å.

Percentile scores (ranging between 0-100) for global validation metrics of the entry are shown in the following graphic. The table shows the number of entries on which the scores are based.



Metric	Whole archive (#Entries)	Similar resolution (#Entries, resolution range(Å))
R_{free}	111664	7193 (2.00-2.00)
Clashscore	122126	8267 (2.00-2.00)
Ramachandran outliers	120053	8166 (2.00-2.00)
Sidechain outliers	120020	8165 (2.00-2.00)
RSRZ outliers	108989	7011 (2.00-2.00)

The table below summarises the geometric issues observed across the polymeric chains and their fit to the electron density. The red, orange, yellow and green segments on the lower bar indicate the fraction of residues that contain outliers for ≥ 3 , 2, 1 and 0 types of geometric quality criteria. A grey segment represents the fraction of residues that are not modelled. The numeric value for each fraction is indicated below the corresponding segment, with a dot representing fractions $\leq 5\%$. The upper red bar (where present) indicates the fraction of residues that have poor fit to the electron density. The numeric value is given above the bar.

Mol	Chain	Length	Quality of chain
1	A	757	<div> <div>3%</div> <div>83%</div> <div>9%</div> <div>8%</div> </div>

2 Entry composition

There are 9 unique types of molecules in this entry. The entry contains 6524 atoms, of which 0 are hydrogens and 0 are deuteriums.

In the tables below, the ZeroOcc column contains the number of atoms modelled with zero occupancy, the AltConf column contains the number of residues with at least one atom in alternate conformation and the Trace column contains the number of residues modelled with at most 2 atoms.

- Molecule 1 is a protein called Glutamate carboxypeptidase 2.

Mol	Chain	Residues	Atoms					ZeroOcc	AltConf	Trace
1	A	693	Total	C	N	O	S	0	46	0
			5764	3705	969	1069	21			

There are 51 discrepancies between the modelled and reference sequences:

Chain	Residue	Modelled	Actual	Comment	Reference
A	-6	MET	-	INITIATING METHIONINE	UNP Q04609
A	-5	LYS	-	EXPRESSION TAG	UNP Q04609
A	-4	LEU	-	EXPRESSION TAG	UNP Q04609
A	-3	CYS	-	EXPRESSION TAG	UNP Q04609
A	-2	ILE	-	EXPRESSION TAG	UNP Q04609
A	-1	LEU	-	EXPRESSION TAG	UNP Q04609
A	0	LEU	-	EXPRESSION TAG	UNP Q04609
A	1	ALA	-	EXPRESSION TAG	UNP Q04609
A	2	VAL	-	EXPRESSION TAG	UNP Q04609
A	3	VAL	-	EXPRESSION TAG	UNP Q04609
A	4	ALA	-	EXPRESSION TAG	UNP Q04609
A	5	PHE	-	EXPRESSION TAG	UNP Q04609
A	6	VAL	-	EXPRESSION TAG	UNP Q04609
A	7	GLY	-	EXPRESSION TAG	UNP Q04609
A	8	LEU	-	EXPRESSION TAG	UNP Q04609
A	9	SER	-	EXPRESSION TAG	UNP Q04609
A	10	LEU	-	EXPRESSION TAG	UNP Q04609
A	11	GLY	-	EXPRESSION TAG	UNP Q04609
A	12	ARG	-	EXPRESSION TAG	UNP Q04609
A	13	SER	-	EXPRESSION TAG	UNP Q04609
A	14	GLY	-	EXPRESSION TAG	UNP Q04609
A	15	LEU	-	EXPRESSION TAG	UNP Q04609
A	16	ASN	-	EXPRESSION TAG	UNP Q04609
A	17	ASP	-	EXPRESSION TAG	UNP Q04609
A	18	ILE	-	EXPRESSION TAG	UNP Q04609
A	19	PHE	-	EXPRESSION TAG	UNP Q04609
A	20	GLU	-	EXPRESSION TAG	UNP Q04609

Continued on next page...

Continued from previous page...

Chain	Residue	Modelled	Actual	Comment	Reference
A	21	ALA	-	EXPRESSION TAG	UNP Q04609
A	22	GLN	-	EXPRESSION TAG	UNP Q04609
A	23	LYS	-	EXPRESSION TAG	UNP Q04609
A	24	ILE	-	EXPRESSION TAG	UNP Q04609
A	25	GLU	-	EXPRESSION TAG	UNP Q04609
A	26	TRP	-	EXPRESSION TAG	UNP Q04609
A	27	HIS	-	EXPRESSION TAG	UNP Q04609
A	28	GLU	-	EXPRESSION TAG	UNP Q04609
A	29	GLY	-	EXPRESSION TAG	UNP Q04609
A	30	SER	-	EXPRESSION TAG	UNP Q04609
A	31	GLY	-	EXPRESSION TAG	UNP Q04609
A	32	SER	-	EXPRESSION TAG	UNP Q04609
A	33	GLY	-	EXPRESSION TAG	UNP Q04609
A	34	SER	-	EXPRESSION TAG	UNP Q04609
A	35	GLU	-	EXPRESSION TAG	UNP Q04609
A	36	ASN	-	EXPRESSION TAG	UNP Q04609
A	37	LEU	-	EXPRESSION TAG	UNP Q04609
A	38	TYR	-	EXPRESSION TAG	UNP Q04609
A	39	PHE	-	EXPRESSION TAG	UNP Q04609
A	40	GLN	-	EXPRESSION TAG	UNP Q04609
A	41	GLY	-	EXPRESSION TAG	UNP Q04609
A	42	ARG	-	EXPRESSION TAG	UNP Q04609
A	43	SER	-	EXPRESSION TAG	UNP Q04609
A	424	ALA	GLU	ENGINEERED MUTATION	UNP Q04609

- Molecule 2 is ZINC ION (three-letter code: ZN) (formula: Zn).

Mol	Chain	Residues	Atoms	ZeroOcc	AltConf
2	A	2	Total Zn 2 2	0	0

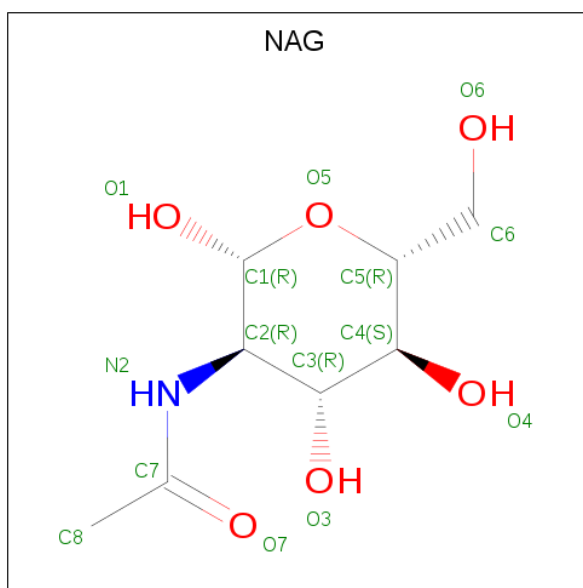
- Molecule 3 is CALCIUM ION (three-letter code: CA) (formula: Ca).

Mol	Chain	Residues	Atoms	ZeroOcc	AltConf
3	A	1	Total Ca 1 1	0	0

- Molecule 4 is CHLORIDE ION (three-letter code: CL) (formula: Cl).

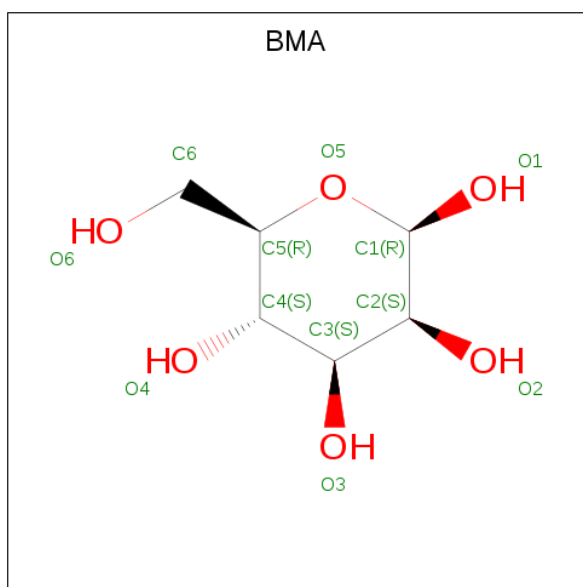
Mol	Chain	Residues	Atoms	ZeroOcc	AltConf
4	A	1	Total Cl 1 1	0	0

- Molecule 5 is N-ACETYL-D-GLUCOSAMINE (three-letter code: NAG) (formula: $C_8H_{15}NO_6$).



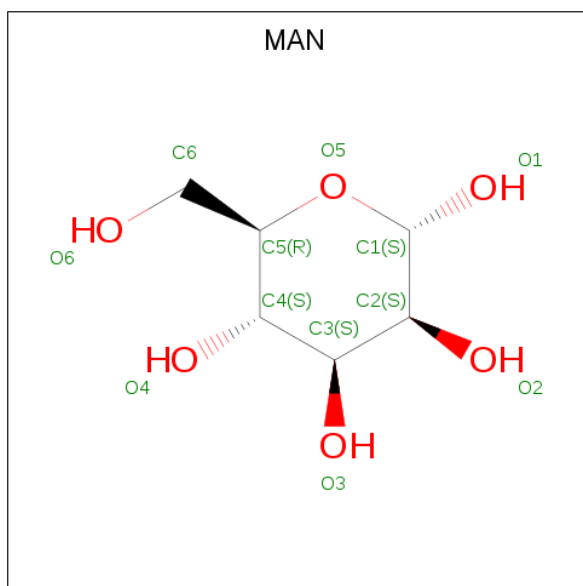
Mol	Chain	Residues	Atoms				ZeroOcc	AltConf
5	A	1	Total	C	N	O	0	0
			14	8	1	5		
5	A	1	Total	C	N	O	0	0
			14	8	1	5		
5	A	1	Total	C	N	O	0	0
			14	8	1	5		
5	A	1	Total	C	N	O	0	0
			14	8	1	5		
5	A	1	Total	C	N	O	0	0
			14	8	1	5		
5	A	1	Total	C	N	O	0	0
			14	8	1	5		
5	A	1	Total	C	N	O	0	0
			14	8	1	5		
5	A	1	Total	C	N	O	0	0
			14	8	1	5		

- Molecule 6 is BETA-D-MANNOSE (three-letter code: BMA) (formula: $C_6H_{12}O_6$).



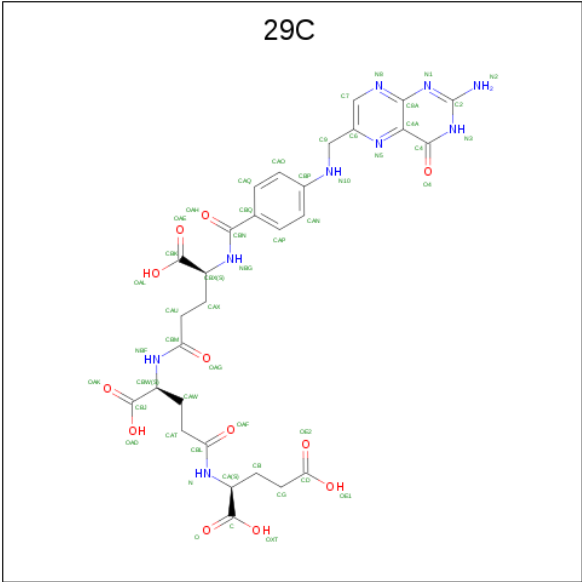
Mol	Chain	Residues	Atoms			ZeroOcc	AltConf
6	A	1	Total	C	O	0	0
			11	6	5		

- Molecule 7 is ALPHA-D-MANNOSE (three-letter code: MAN) (formula: $C_6H_{12}O_6$).



Mol	Chain	Residues	Atoms			ZeroOcc	AltConf
7	A	1	Total	C	O	0	0
			11	6	5		

- Molecule 8 is N-(4-{[(2-amino-4-oxo-3,4-dihydropteridin-6-yl)methyl]amino}benzoyl)-L-gamma-glutamyl-L-gamma-glutamyl-L-glutamic acid (three-letter code: 29C) (formula: $C_{29}H_{33}N_9O_{12}$).



Mol	Chain	Residues	Atoms				ZeroOcc	AltConf
8	A	1	Total	C	N	O	0	0
			50	29	9	12		

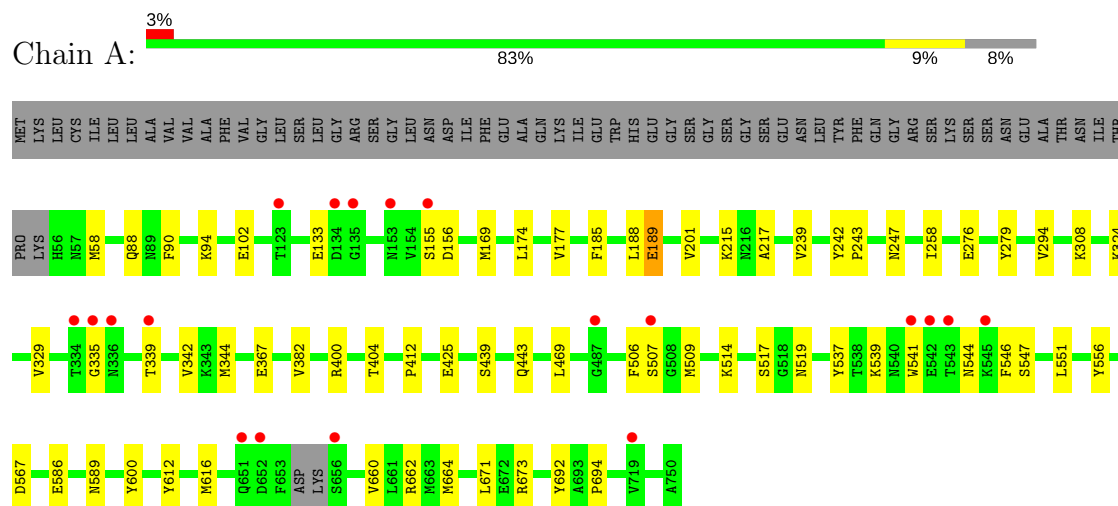
- Molecule 9 is water.

Mol	Chain	Residues	Atoms		ZeroOcc	AltConf
9	A	521	Total	O	0	9
			530	530		

3 Residue-property plots

These plots are drawn for all protein, RNA and DNA chains in the entry. The first graphic for a chain summarises the proportions of the various outlier classes displayed in the second graphic. The second graphic shows the sequence view annotated by issues in geometry and electron density. Residues are color-coded according to the number of geometric quality criteria for which they contain at least one outlier: green = 0, yellow = 1, orange = 2 and red = 3 or more. A red dot above a residue indicates a poor fit to the electron density ($RSRZ > 2$). Stretches of 2 or more consecutive residues without any outlier are shown as a green connector. Residues present in the sample, but not in the model, are shown in grey.

- Molecule 1: Glutamate carboxypeptidase 2



4 Data and refinement statistics

Property	Value	Source
Space group	I 2 2 2	Depositor
Cell constants a, b, c, α , β , γ	101.65Å 130.14Å 159.87Å 90.00° 90.00° 90.00°	Depositor
Resolution (Å)	22.96 – 2.00 22.96 – 2.00	Depositor EDS
% Data completeness (in resolution range)	98.0 (22.96-2.00) 98.0 (22.96-2.00)	Depositor EDS
R_{merge}	0.05	Depositor
R_{sym}	(Not available)	Depositor
$\langle I/\sigma(I) \rangle$ ¹	6.18 (at 1.99Å)	Xtriage
Refinement program	REFMAC	Depositor
R, R_{free}	0.137 , 0.172 0.143 , 0.178	Depositor DCC
R_{free} test set	1188 reflections (1.69%)	wwPDB-VP
Wilson B-factor (Å ²)	23.4	Xtriage
Anisotropy	0.092	Xtriage
Bulk solvent k_{sol} (e/Å ³), B_{sol} (Å ²)	0.33 , 56.9	EDS
L-test for twinning ²	$\langle L \rangle = 0.51$, $\langle L^2 \rangle = 0.35$	Xtriage
Estimated twinning fraction	No twinning to report.	Xtriage
F_o, F_c correlation	0.97	EDS
Total number of atoms	6524	wwPDB-VP
Average B, all atoms (Å ²)	27.0	wwPDB-VP

Xtriage's analysis on translational NCS is as follows: *The largest off-origin peak in the Patterson function is 4.43% of the height of the origin peak. No significant pseudotranslation is detected.*

¹Intensities estimated from amplitudes.

²Theoretical values of $\langle |L| \rangle$, $\langle L^2 \rangle$ for acentric reflections are 0.5, 0.333 respectively for untwinned datasets, and 0.375, 0.2 for perfectly twinned datasets.

5 Model quality [i](#)

5.1 Standard geometry [i](#)

Bond lengths and bond angles in the following residue types are not validated in this section: ZN, BMA, NAG, CL, CA, 29C, MAN

The Z score for a bond length (or angle) is the number of standard deviations the observed value is removed from the expected value. A bond length (or angle) with $|Z| > 5$ is considered an outlier worth inspection. RMSZ is the root-mean-square of all Z scores of the bond lengths (or angles).

Mol	Chain	Bond lengths		Bond angles	
		RMSZ	$\# Z > 5$	RMSZ	$\# Z > 5$
1	A	1.00	0/6044	0.78	2/8188 (0.0%)

There are no bond length outliers.

All (2) bond angle outliers are listed below:

Mol	Chain	Res	Type	Atoms	Z	Observed(°)	Ideal(°)
1	A	425	GLU	OE1-CD-OE2	-8.90	112.62	123.30
1	A	567	ASP	CB-CG-OD1	5.45	123.21	118.30

There are no chirality outliers.

There are no planarity outliers.

5.2 Too-close contacts [i](#)

In the following table, the Non-H and H(model) columns list the number of non-hydrogen atoms and hydrogen atoms in the chain respectively. The H(added) column lists the number of hydrogen atoms added and optimized by MolProbity. The Clashes column lists the number of clashes within the asymmetric unit, whereas Symm-Clashes lists symmetry related clashes.

Mol	Chain	Non-H	H(model)	H(added)	Clashes	Symm-Clashes
1	A	5764	0	5625	57	1
2	A	2	0	0	0	0
3	A	1	0	0	0	0
4	A	1	0	0	0	0
5	A	154	0	138	3	0
6	A	11	0	9	0	1
7	A	11	0	10	0	0
8	A	50	0	29	6	0
9	A	530	0	0	12	0

Continued on next page...

Continued from previous page...

Mol	Chain	Non-H	H(model)	H(added)	Clashes	Symm-Clashes
All	All	6524	0	5811	62	1

The all-atom clashscore is defined as the number of clashes found per 1000 atoms (including hydrogen atoms). The all-atom clashscore for this structure is 5.

All (62) close contacts within the same asymmetric unit are listed below, sorted by their clash magnitude.

Atom-1	Atom-2	Interatomic distance (Å)	Clash overlap (Å)
1:A:90[B]:PHE:CE2	1:A:94:LYS:HE2	1.44	1.49
1:A:660[A]:VAL:O	1:A:664[A]:MET:HG2	1.46	1.15
1:A:90[B]:PHE:CE2	1:A:94:LYS:CE	2.30	1.14
1:A:90[B]:PHE:CZ	1:A:94:LYS:HE2	1.88	1.07
1:A:412:PRO:HA	1:A:589[B]:ASN:HD21	1.25	0.99
1:A:185:PHE:O	1:A:189:GLU:HG2	1.77	0.83
1:A:541[B]:TRP:CZ2	8:A:818:29C:H9	2.16	0.80
1:A:276[D]:GLU:HB2	9:A:1065:HOH:O	1.85	0.75
1:A:58:MET:CE	1:A:586:GLU:HG2	2.17	0.74
1:A:58:MET:HE1	1:A:586:GLU:HG2	1.71	0.71
1:A:90[B]:PHE:CZ	1:A:94:LYS:CE	2.63	0.70
1:A:547:SER:CB	9:A:1416:HOH:O	2.42	0.66
1:A:412:PRO:HA	1:A:589[B]:ASN:ND2	2.07	0.65
1:A:185:PHE:O	1:A:189:GLU:CG	2.44	0.65
1:A:506:PHE:HB2	1:A:509:MET:HG3	1.79	0.64
1:A:90[B]:PHE:HE2	1:A:94:LYS:CE	2.04	0.63
8:A:818:29C:H1	8:A:818:29C:CBP	2.28	0.62
1:A:541[B]:TRP:CE2	8:A:818:29C:H9	2.37	0.60
1:A:90[B]:PHE:HE2	1:A:94:LYS:HZ3	1.51	0.57
1:A:547:SER:HB2	9:A:1416:HOH:O	2.03	0.57
1:A:133:GLU:HG3	1:A:339:THR:HB	1.86	0.56
1:A:90[B]:PHE:CE2	1:A:94:LYS:NZ	2.73	0.56
1:A:400:ARG:O	1:A:404[B]:THR:HG23	2.05	0.56
5:A:807:NAG:H83	9:A:1100:HOH:O	2.05	0.56
1:A:239[A]:VAL:HG22	1:A:247:ASN:ND2	2.21	0.55
1:A:547:SER:HB3	9:A:1416:HOH:O	2.01	0.55
1:A:90[B]:PHE:HE2	1:A:94:LYS:NZ	2.05	0.54
5:A:813:NAG:H83	9:A:1262:HOH:O	2.06	0.54
1:A:514[A]:LYS:HD2	1:A:692:TYR:CE1	2.44	0.53
1:A:514[A]:LYS:HD2	1:A:692:TYR:HE1	1.74	0.53
1:A:517:SER:HB2	1:A:694:PRO:HG3	1.91	0.52
1:A:308:LYS:HB2	9:A:1278:HOH:O	2.11	0.51
1:A:188:LEU:HD21	1:A:329:VAL:HG11	1.92	0.51

Continued on next page...

Continued from previous page...

Atom-1	Atom-2	Interatomic distance (Å)	Clash overlap (Å)
1:A:544:ASN:HB3	1:A:546:PHE:CE1	2.46	0.51
1:A:58:MET:HE2	1:A:586:GLU:HG2	1.92	0.51
1:A:155:SER:O	1:A:156:ASP:HB2	2.13	0.49
1:A:88[C]:GLN:CD	9:A:1367:HOH:O	2.51	0.49
1:A:215[B]:LYS:HE2	9:A:1372[B]:HOH:O	2.13	0.49
1:A:612:TYR:CZ	1:A:616:MET:HG3	2.49	0.47
1:A:215[A]:LYS:NZ	9:A:1224:HOH:O	2.48	0.47
1:A:539:LYS:HE2	1:A:541[B]:TRP:CZ2	2.52	0.45
1:A:174[B]:LEU:HD11	1:A:342:VAL:HG21	2.00	0.44
1:A:541[B]:TRP:CH2	8:A:818:29C:H9	2.52	0.44
1:A:541[B]:TRP:NE1	8:A:818:29C:H8	2.34	0.43
8:A:818:29C:CBL	9:A:1309:HOH:O	2.66	0.43
1:A:551:LEU:HD22	1:A:556:TYR:HB2	2.00	0.43
1:A:439:SER:O	1:A:443[A]:GLN:HB2	2.19	0.42
1:A:239[A]:VAL:HG22	1:A:247:ASN:CG	2.39	0.42
1:A:188:LEU:HD21	1:A:329:VAL:CG1	2.49	0.42
1:A:58:MET:HE1	1:A:586:GLU:CG	2.45	0.42
1:A:367:GLU:OE1	1:A:662[A]:ARG:NH1	2.53	0.41
1:A:324:LYS:HD3	1:A:324:LYS:HA	1.86	0.41
1:A:469:LEU:HD21	1:A:671:LEU:HD23	2.02	0.41
1:A:242:TYR:CG	1:A:243:PRO:HA	2.56	0.41
5:A:813:NAG:C8	9:A:1262:HOH:O	2.66	0.41
1:A:258:ILE:HD13	1:A:294:VAL:HB	2.03	0.41
1:A:539:LYS:HD2	1:A:544:ASN:HB2	2.03	0.41
1:A:201[A]:VAL:HG21	1:A:217:ALA:HB1	2.04	0.40
1:A:169:MET:HA	1:A:344:MET:O	2.21	0.40
1:A:177:VAL:HG12	1:A:188:LEU:HD11	2.04	0.40

All (1) symmetry-related close contacts are listed below. The label for Atom-2 includes the symmetry operator and encoded unit-cell translations to be applied.

Atom-1	Atom-2	Interatomic distance (Å)	Clash overlap (Å)
1:A:276[D]:GLU:OE1	6:A:816:BMA:O2[2_565]	1.74	0.46

5.3 Torsion angles ⓘ

5.3.1 Protein backbone ⓘ

In the following table, the Percentiles column shows the percent Ramachandran outliers of the chain as a percentile score with respect to all X-ray entries followed by that with respect to entries

of similar resolution.

The Analysed column shows the number of residues for which the backbone conformation was analysed, and the total number of residues.

Mol	Chain	Analysed	Favoured	Allowed	Outliers	Percentiles	
1	A	733/757 (97%)	714 (97%)	17 (2%)	2 (0%)	43	39

All (2) Ramachandran outliers are listed below:

Mol	Chain	Res	Type
1	A	335	GLY
1	A	382	VAL

5.3.2 Protein sidechains ⓘ

In the following table, the Percentiles column shows the percent sidechain outliers of the chain as a percentile score with respect to all X-ray entries followed by that with respect to entries of similar resolution.

The Analysed column shows the number of residues for which the sidechain conformation was analysed, and the total number of residues.

Mol	Chain	Analysed	Rotameric	Outliers	Percentiles	
1	A	634/642 (99%)	628 (99%)	6 (1%)	81	85

All (6) residues with a non-rotameric sidechain are listed below:

Mol	Chain	Res	Type
1	A	189	GLU
1	A	507	SER
1	A	519	ASN
1	A	537	TYR
1	A	600	TYR
1	A	673	ARG

Some sidechains can be flipped to improve hydrogen bonding and reduce clashes. All (2) such sidechains are listed below:

Mol	Chain	Res	Type
1	A	136	ASN
1	A	303	GLN

5.3.3 RNA ⓘ

There are no RNA molecules in this entry.

5.4 Non-standard residues in protein, DNA, RNA chains ⓘ

There are no non-standard protein/DNA/RNA residues in this entry.

5.5 Carbohydrates ⓘ

There are no carbohydrates in this entry.

5.6 Ligand geometry ⓘ

Of 18 ligands modelled in this entry, 4 are monoatomic - leaving 14 for Mogul analysis.

In the following table, the Counts columns list the number of bonds (or angles) for which Mogul statistics could be retrieved, the number of bonds (or angles) that are observed in the model and the number of bonds (or angles) that are defined in the Chemical Component Dictionary. The Link column lists molecule types, if any, to which the group is linked. The Z score for a bond length (or angle) is the number of standard deviations the observed value is removed from the expected value. A bond length (or angle) with $|Z| > 2$ is considered an outlier worth inspection. RMSZ is the root-mean-square of all Z scores of the bond lengths (or angles).

Mol	Type	Chain	Res	Link	Bond lengths			Bond angles		
					Counts	RMSZ	$\# Z > 2$	Counts	RMSZ	$\# Z > 2$
5	NAG	A	805	1,5	14,14,15	0.62	0	17,19,21	1.34	3 (17%)
5	NAG	A	806	5	14,14,15	0.69	0	17,19,21	1.72	4 (23%)
5	NAG	A	807	1	14,14,15	0.81	0	17,19,21	2.03	5 (29%)
5	NAG	A	808	1,5	14,14,15	0.56	0	17,19,21	1.55	3 (17%)
5	NAG	A	809	5	14,14,15	0.51	0	17,19,21	1.18	4 (23%)
5	NAG	A	810	1	14,14,15	0.53	0	17,19,21	2.36	3 (17%)
5	NAG	A	811	1	14,14,15	0.65	0	17,19,21	1.44	3 (17%)
5	NAG	A	812	1,5	14,14,15	0.72	0	17,19,21	1.41	3 (17%)
5	NAG	A	813	5	14,14,15	0.65	0	17,19,21	1.52	3 (17%)
5	NAG	A	814	1,5	14,14,15	0.69	0	17,19,21	1.97	4 (23%)
5	NAG	A	815	5,6	14,14,15	0.88	1 (7%)	17,19,21	1.46	3 (17%)
6	BMA	A	816	5,7	11,11,12	0.69	0	15,15,17	1.71	3 (20%)
7	MAN	A	817	6	11,11,12	0.71	0	15,15,17	1.45	2 (13%)
8	29C	A	818	2	40,52,52	1.67	10 (25%)	49,71,71	2.23	19 (38%)

In the following table, the Chirals column lists the number of chiral outliers, the number of chiral centers analysed, the number of these observed in the model and the number defined in the Chemical Component Dictionary. Similar counts are reported in the Torsion and Rings columns. '-' means no outliers of that kind were identified.

Mol	Type	Chain	Res	Link	Chirals	Torsions	Rings
5	NAG	A	805	1,5	-	0/6/23/26	0/1/1/1
5	NAG	A	806	5	-	0/6/23/26	0/1/1/1
5	NAG	A	807	1	-	0/6/23/26	0/1/1/1
5	NAG	A	808	1,5	-	0/6/23/26	0/1/1/1
5	NAG	A	809	5	-	0/6/23/26	0/1/1/1
5	NAG	A	810	1	-	0/6/23/26	0/1/1/1
5	NAG	A	811	1	-	0/6/23/26	0/1/1/1
5	NAG	A	812	1,5	-	0/6/23/26	0/1/1/1
5	NAG	A	813	5	-	0/6/23/26	0/1/1/1
5	NAG	A	814	1,5	-	0/6/23/26	0/1/1/1
5	NAG	A	815	5,6	-	0/6/23/26	0/1/1/1
6	BMA	A	816	5,7	-	0/2/19/22	0/1/1/1
7	MAN	A	817	6	-	0/2/19/22	0/1/1/1
8	29C	A	818	2	-	0/34/48/48	0/3/3/3

All (11) bond length outliers are listed below:

Mol	Chain	Res	Type	Atoms	Z	Observed(Å)	Ideal(Å)
5	A	815	NAG	O5-C1	-2.42	1.39	1.43
8	A	818	29C	CA-N	2.04	1.49	1.46
8	A	818	29C	CAN-CAP	2.11	1.42	1.38
8	A	818	29C	CBX-NBG	2.25	1.49	1.46
8	A	818	29C	CAU-CBM	2.33	1.55	1.51
8	A	818	29C	C4A-N5	2.38	1.36	1.33
8	A	818	29C	CAT-CBL	2.44	1.56	1.51
8	A	818	29C	CBW-NBF	2.48	1.50	1.46
8	A	818	29C	CB-CA	3.54	1.57	1.53
8	A	818	29C	CBQ-CBN	3.55	1.57	1.50
8	A	818	29C	O4-C4	4.53	1.35	1.24

All (62) bond angle outliers are listed below:

Mol	Chain	Res	Type	Atoms	Z	Observed(°)	Ideal(°)
8	A	818	29C	N1-C2-N3	-4.84	120.31	127.41
8	A	818	29C	CAX-CBX-CBK	-4.40	105.58	112.11
8	A	818	29C	CB-CA-C	-4.03	106.12	112.11
6	A	816	BMA	O3-C3-C2	-3.99	102.61	110.04
8	A	818	29C	C4-C4A-C8A	-3.97	116.99	119.95

Continued on next page...

Continued from previous page...

Mol	Chain	Res	Type	Atoms	Z	Observed(°)	Ideal(°)
5	A	807	NAG	C2-N2-C7	-3.54	117.77	122.94
8	A	818	29C	CAW-CAT-CBL	-3.37	105.65	113.16
5	A	807	NAG	O5-C1-C2	-3.21	107.10	111.52
8	A	818	29C	C6-C9-N10	-2.96	106.52	113.08
8	A	818	29C	C9-C6-C7	-2.94	116.43	121.55
5	A	815	NAG	C3-C4-C5	-2.82	105.19	110.24
5	A	812	NAG	O4-C4-C3	-2.82	103.76	110.34
5	A	814	NAG	O5-C1-C2	-2.67	107.84	111.52
8	A	818	29C	C-CA-N	-2.60	106.76	112.39
8	A	818	29C	C4A-C4-N3	-2.39	120.08	123.47
5	A	814	NAG	O4-C4-C5	-2.38	103.35	109.31
5	A	815	NAG	C2-N2-C7	-2.32	119.55	122.94
5	A	811	NAG	O7-C7-C8	-2.19	118.11	122.07
5	A	808	NAG	O7-C7-C8	-2.18	118.14	122.07
5	A	805	NAG	C2-N2-C7	-2.14	119.83	122.94
5	A	809	NAG	C3-C4-C5	-2.13	106.43	110.24
5	A	807	NAG	O7-C7-C8	-2.12	118.24	122.07
8	A	818	29C	CAX-CAU-CBM	-2.06	108.57	113.16
5	A	812	NAG	C2-N2-C7	-2.04	119.96	122.94
8	A	818	29C	CAT-CBL-N	-2.03	112.32	115.83
6	A	816	BMA	O2-C2-C3	-2.02	106.26	110.19
8	A	818	29C	CBJ-CBW-NBF	-2.01	108.05	112.39
5	A	810	NAG	O5-C5-C6	2.03	110.36	107.15
5	A	806	NAG	O4-C4-C5	2.04	114.41	109.31
5	A	809	NAG	O5-C5-C6	2.06	110.41	107.15
5	A	815	NAG	C8-C7-N2	2.07	119.73	116.10
5	A	808	NAG	C4-C3-C2	2.08	114.07	111.02
5	A	813	NAG	O4-C4-C5	2.09	114.54	109.31
5	A	807	NAG	C8-C7-N2	2.09	119.76	116.10
8	A	818	29C	CBX-NBG-CBN	2.20	125.19	122.25
5	A	809	NAG	C1-O5-C5	2.23	115.25	112.19
5	A	805	NAG	C4-C3-C2	2.24	114.30	111.02
5	A	806	NAG	C8-C7-N2	2.32	120.16	116.10
5	A	814	NAG	O5-C5-C6	2.33	110.84	107.15
5	A	812	NAG	C8-C7-N2	2.38	120.27	116.10
5	A	805	NAG	C1-O5-C5	2.39	115.47	112.19
7	A	817	MAN	O3-C3-C2	2.51	114.71	110.04
5	A	809	NAG	O4-C4-C5	2.55	115.68	109.31
8	A	818	29C	N2-C2-N3	2.57	121.28	117.25
5	A	813	NAG	C1-O5-C5	2.61	115.77	112.19
5	A	811	NAG	O5-C5-C6	2.76	111.52	107.15
5	A	806	NAG	C4-C3-C2	2.98	115.38	111.02

Continued on next page...

Continued from previous page...

Mol	Chain	Res	Type	Atoms	Z	Observed(°)	Ideal(°)
5	A	811	NAG	C1-O5-C5	3.24	116.65	112.19
6	A	816	BMA	C1-C2-C3	3.36	113.91	109.66
8	A	818	29C	C4-N3-C2	3.40	120.95	116.06
7	A	817	MAN	O5-C5-C6	3.42	112.56	107.15
5	A	813	NAG	C8-C7-N2	3.49	122.22	116.10
8	A	818	29C	C4-C4A-N5	3.71	122.87	118.70
8	A	818	29C	C9-C6-N5	3.79	123.60	116.67
5	A	810	NAG	C2-N2-C7	3.80	128.49	122.94
5	A	808	NAG	C1-O5-C5	3.95	117.62	112.19
8	A	818	29C	CB-CA-N	4.07	116.14	110.19
5	A	806	NAG	C2-N2-C7	4.65	129.72	122.94
8	A	818	29C	C2-N1-C8A	4.74	120.69	115.16
5	A	807	NAG	C1-O5-C5	5.07	119.17	112.19
5	A	814	NAG	C1-O5-C5	6.29	120.84	112.19
5	A	810	NAG	C1-O5-C5	8.03	123.24	112.19

There are no chirality outliers.

There are no torsion outliers.

There are no ring outliers.

4 monomers are involved in 10 short contacts:

Mol	Chain	Res	Type	Clashes	Symm-Clashes
5	A	807	NAG	1	0
5	A	813	NAG	2	0
6	A	816	BMA	0	1
8	A	818	29C	6	0

5.7 Other polymers [i](#)

There are no such residues in this entry.

5.8 Polymer linkage issues [i](#)

There are no chain breaks in this entry.

6 Fit of model and data ⓘ

6.1 Protein, DNA and RNA chains ⓘ

In the following table, the column labelled ‘#RSRZ> 2’ contains the number (and percentage) of RSRZ outliers, followed by percent RSRZ outliers for the chain as percentile scores relative to all X-ray entries and entries of similar resolution. The OWAB column contains the minimum, median, 95th percentile and maximum values of the occupancy-weighted average B-factor per residue. The column labelled ‘Q< 0.9’ lists the number of (and percentage) of residues with an average occupancy less than 0.9.

Mol	Chain	Analysed	<RSRZ>	#RSRZ>2	OWAB(Å ²)	Q<0.9
1	A	693/757 (91%)	-0.43	19 (2%) 54 53	14, 24, 45, 63	33 (4%)

All (19) RSRZ outliers are listed below:

Mol	Chain	Res	Type	RSRZ
1	A	507	SER	3.8
1	A	335	GLY	3.6
1	A	541[A]	TRP	3.3
1	A	719	VAL	3.2
1	A	336	ASN	3.2
1	A	543	THR	3.2
1	A	656[A]	SER	3.0
1	A	153	ASN	3.0
1	A	134	ASP	2.8
1	A	123	THR	2.7
1	A	487	GLY	2.4
1	A	652	ASP	2.3
1	A	545	LYS	2.3
1	A	339	THR	2.3
1	A	334	THR	2.3
1	A	542	GLU	2.2
1	A	135	GLY	2.1
1	A	651	GLN	2.1
1	A	155	SER	2.0

6.2 Non-standard residues in protein, DNA, RNA chains ⓘ

There are no non-standard protein/DNA/RNA residues in this entry.

6.3 Carbohydrates [i](#)

There are no carbohydrates in this entry.

6.4 Ligands [i](#)

In the following table, the Atoms column lists the number of modelled atoms in the group and the number defined in the chemical component dictionary. The B-factors column lists the minimum, median, 95th percentile and maximum values of B factors of atoms in the group. The column labelled 'Q< 0.9' lists the number of atoms with occupancy less than 0.9.

Mol	Type	Chain	Res	Atoms	RSCC	RSR	B-factors(\AA^2)	Q<0.9
5	NAG	A	810	14/15	0.70	0.34	74,80,82,82	0
5	NAG	A	807	14/15	0.73	0.37	49,55,63,65	0
5	NAG	A	806	14/15	0.77	0.30	44,52,57,57	0
5	NAG	A	809	14/15	0.83	0.34	59,63,66,67	0
6	BMA	A	816	11/12	0.86	0.19	45,48,50,51	0
5	NAG	A	813	14/15	0.91	0.23	41,47,52,53	0
5	NAG	A	815	14/15	0.93	0.28	39,43,50,52	0
8	29C	A	818	50/50	0.93	0.13	18,46,57,59	2
5	NAG	A	808	14/15	0.94	0.21	43,46,51,56	0
7	MAN	A	817	11/12	0.95	0.20	51,54,55,58	0
5	NAG	A	811	14/15	0.95	0.12	28,42,45,45	0
5	NAG	A	814	14/15	0.96	0.11	18,27,36,43	0
5	NAG	A	812	14/15	0.96	0.14	29,32,37,40	0
5	NAG	A	805	14/15	0.97	0.15	34,40,45,48	0
2	ZN	A	801	1/1	1.00	0.03	18,18,18,18	0
3	CA	A	803	1/1	1.00	0.08	16,16,16,16	0
4	CL	A	804	1/1	1.00	0.05	24,24,24,24	0
2	ZN	A	802	1/1	1.00	0.03	21,21,21,21	0

6.5 Other polymers [i](#)

There are no such residues in this entry.