



wwPDB NMR Structure Validation Summary Report ⓘ

Feb 16, 2018 – 05:46 am GMT

PDB ID : 2N0Y
Title : NMR structure of the complex between the C-terminal domain of the Rift Valley fever virus protein NSs and the PH domain of the Tfb1 subunit of TFIIF
Authors : Cyr, N.; de la Fuente, C.; Lecoq, L.; Guendel, I.; Chabot, P.R.; Kehn-Hall, K.; Omichinski, J.G.
Deposited on : 2015-03-18

This is a wwPDB NMR Structure Validation Summary Report for a publicly released PDB entry.

We welcome your comments at validation@mail.wwpdb.org

A user guide is available at

<https://www.wwpdb.org/validation/2017/NMRValidationReportHelp>

with specific help available everywhere you see the ⓘ symbol.

The following versions of software and data (see [references ⓘ](#)) were used in the production of this report:

Cyrange : Kirchner and Güntert (2011)
NmrClust : Kelley et al. (1996)
MolProbity : 4.02b-467
Percentile statistics : 20171227.v01 (using entries in the PDB archive December 27th 2017)
RCI : v_1n_11_5_13_A (Berjanski et al., 2005)
PANAV : Wang et al. (2010)
ShiftChecker : trunk30686
Ideal geometry (proteins) : Engh & Huber (2001)
Ideal geometry (DNA, RNA) : Parkinson et al. (1996)
Validation Pipeline (wwPDB-VP) : trunk30686

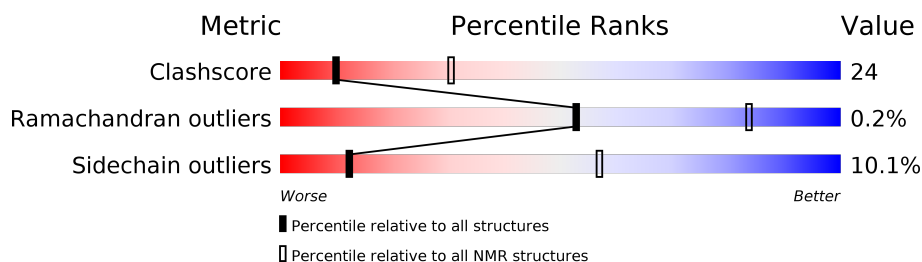
1 Overall quality at a glance

The following experimental techniques were used to determine the structure:

SOLUTION NMR

The overall completeness of chemical shifts assignment is 91%.

Percentile scores (ranging between 0-100) for global validation metrics of the entry are shown in the following graphic. The table shows the number of entries on which the scores are based.



Metric	Whole archive (#Entries)	NMR archive (#Entries)
Clashscore	136279	12091
Ramachandran outliers	132675	10835
Sidechain outliers	132484	10811

The table below summarises the geometric issues observed across the polymeric chains and their fit to the experimental data. The red, orange, yellow and green segments indicate the fraction of residues that contain outliers for ≥ 3 , 2, 1 and 0 types of geometric quality criteria. A cyan segment indicates the fraction of residues that are not part of the well-defined cores, and a grey segment represents the fraction of residues that are not modelled. The numeric value for each fraction is indicated below the corresponding segment, with a dot representing fractions $\leq 5\%$

Mol	Chain	Length	Quality of chain
1	A	115	
2	B	24	

2 Ensemble composition and analysis

This entry contains 20 models. Model 12 is the overall representative, medoid model (most similar to other models). The authors have identified model 1 as representative, based on the following criterion: *lowest energy*.

The following residues are included in the computation of the global validation metrics.

Well-defined (core) protein residues			
Well-defined core	Residue range (total)	Backbone RMSD (Å)	Medoid model
1	A:3-A:66, A:85-A:111, B:261-B:263 (94)	0.22	12

Ill-defined regions of proteins are excluded from the global statistics.

Ligands and non-protein polymers are included in the analysis.

The models can be grouped into 3 clusters and 1 single-model cluster was found.

Cluster number	Models
1	1, 7, 8, 13, 14, 16, 18, 19
2	2, 3, 5, 9, 10, 12, 17, 20
3	4, 6, 11
Single-model clusters	15

3 Entry composition

There are 2 unique types of molecules in this entry. The entry contains 2137 atoms, of which 1056 are hydrogens and 0 are deuteriums.

- Molecule 1 is a protein called RNA polymerase II transcription factor B subunit 1.

Mol	Chain	Residues	Atoms						Trace
1	A	115	Total	C	H	N	O	S	0
			1821	559	919	161	177	5	

There is a discrepancy between the modelled and reference sequences:

Chain	Residue	Modelled	Actual	Comment	Reference
A	1	PRO	MET	ENGINEERED MUTATION	UNP P32776

- Molecule 2 is a protein called Non-structural protein NS-S.

Mol	Chain	Residues	Atoms						Trace
2	B	24	Total	C	H	N	O	S	0
			316	104	137	24	50	1	

There are 5 discrepancies between the modelled and reference sequences:

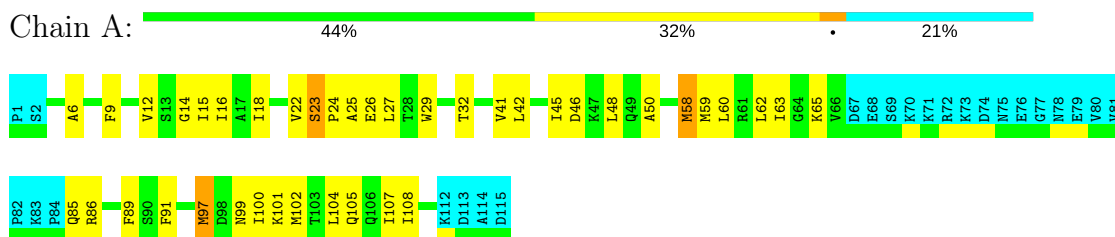
Chain	Residue	Modelled	Actual	Comment	Reference
B	242	GLY	-	EXPRESSION TAG	UNP P21698
B	243	GLY	-	EXPRESSION TAG	UNP P21698
B	244	GLY	-	EXPRESSION TAG	UNP P21698
B	245	GLY	-	EXPRESSION TAG	UNP P21698
B	246	TYR	-	EXPRESSION TAG	UNP P21698

4 Residue-property plots [i](#)

4.1 Average score per residue in the NMR ensemble

These plots are provided for all protein, RNA and DNA chains in the entry. The first graphic is the same as shown in the summary in section 1 of this report. The second graphic shows the sequence where residues are colour-coded according to the number of geometric quality criteria for which they contain at least one outlier: green = 0, yellow = 1, orange = 2 and red = 3 or more. Stretches of 2 or more consecutive residues without any outliers are shown as green connectors. Residues which are classified as ill-defined in the NMR ensemble, are shown in cyan with an underline colour-coded according to the previous scheme. Residues which were present in the experimental sample, but not modelled in the final structure are shown in grey.

- Molecule 1: RNA polymerase II transcription factor B subunit 1



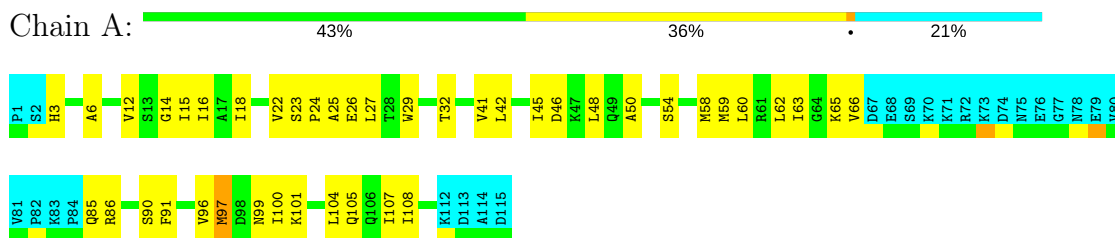
- Molecule 2: Non-structural protein NS-S



4.2 Residue scores for the representative (medoid) model from the NMR ensemble

The representative model is number 12. Colouring as in section 4.1 above.

- Molecule 1: RNA polymerase II transcription factor B subunit 1



- Molecule 2: Non-structural protein NS-S



G242	G243	G244	G245	Y246	D247	Y248	E249	M250	E251	S252	E253	E254	E255	S256	D257	D258	D259	G260	F261		Y264	D265
------	------	------	------	------	------	------	------	------	------	------	------	------	------	------	------	------	------	------	------	--	------	------

5 Refinement protocol and experimental data overview

The models were refined using the following method: *torsion angle dynamics*.

Of the 260 calculated structures, 20 were deposited, based on the following criterion: *structures with the lowest energy*.

The following table shows the software used for structure solution, optimisation and refinement.

Software name	Classification	Version
CNS	refinement	

The following table shows chemical shift validation statistics as aggregates over all chemical shift files. Detailed validation can be found in section 7 of this report.

Chemical shift file(s)	2n0y_cs.str
Number of chemical shift lists	1
Total number of shifts	1693
Number of shifts mapped to atoms	1693
Number of unparsed shifts	0
Number of shifts with mapping errors	0
Number of shifts with mapping warnings	0
Assignment completeness (well-defined parts)	91%

No validations of the models with respect to experimental NMR restraints is performed at this time.

6 Model quality [i](#)

6.1 Standard geometry [i](#)

The Z score for a bond length (or angle) is the number of standard deviations the observed value is removed from the expected value. A bond length (or angle) with $|Z| > 5$ is considered an outlier worth inspection. RMSZ is the (average) root-mean-square of all Z scores of the bond lengths (or angles).

Mol	Chain	Bond lengths		Bond angles	
		RMSZ	#Z>5	RMSZ	#Z>5
1	A	0.44±0.03	0±0/725 (0.0±0.0%)	0.56±0.01	0±0/978 (0.0±0.0%)
2	B	0.37±0.07	0±0/28 (0.0±0.0%)	0.44±0.09	0±0/38 (0.0±0.0%)
All	All	0.43	1/15060 (0.0%)	0.56	0/20320 (0.0%)

Chiral center outliers are detected by calculating the chiral volume of a chiral center and verifying if the center is modelled as a planar moiety or with the opposite hand. A planarity outlier is detected by checking planarity of atoms in a peptide group, atoms in a mainchain group or atoms of a sidechain that are expected to be planar.

Mol	Chain	Chirality	Planarity
1	A	0.0±0.0	0.2±0.4
All	All	0	5

All unique bond outliers are listed below.

Mol	Chain	Res	Type	Atoms	Z	Observed(Å)	Ideal(Å)	Models	
								Worst	Total
1	A	91	PHE	CE2-CZ	5.06	1.47	1.37	4	1

There are no bond-angle outliers.

There are no chirality outliers.

All unique planar outliers are listed below.

Mol	Chain	Res	Type	Group	Models (Total)
1	A	23	SER	Peptide	5

6.2 Too-close contacts [i](#)

In the following table, the Non-H and H(model) columns list the number of non-hydrogen atoms and hydrogen atoms in each chain respectively. The H(added) column lists the number of hydrogen atoms added and optimized by MolProbity. The Clashes column lists the number of clashes

averaged over the ensemble.

Mol	Chain	Non-H	H(model)	H(added)	Clashes
1	A	714	736	733	35±4
2	B	27	24	24	1±1
All	All	14820	15200	15140	705

The all-atom clashscore is defined as the number of clashes found per 1000 atoms (including hydrogen atoms). The all-atom clashscore for this structure is 24.

5 of 139 unique clashes are listed below, sorted by their clash magnitude.

Atom-1	Atom-2	Clash(Å)	Distance(Å)	Models	
				Worst	Total
1:A:48:LEU:HD23	1:A:105:GLN:HG3	0.98	1.36	12	16
1:A:48:LEU:HD22	1:A:104:LEU:HB2	0.84	1.50	3	20
1:A:60:LEU:HB2	1:A:91:PHE:CE1	0.81	2.10	4	10
1:A:22:VAL:HG11	1:A:26:GLU:HB2	0.78	1.54	14	10
1:A:48:LEU:HD23	1:A:105:GLN:HG2	0.77	1.52	16	4

6.3 Torsion angles [i](#)

6.3.1 Protein backbone [i](#)

In the following table, the Percentiles column shows the percent Ramachandran outliers of the chain as a percentile score with respect to all PDB entries followed by that with respect to all NMR entries. The Analysed column shows the number of residues for which the backbone conformation was analysed and the total number of residues.

Mol	Chain	Analysed	Favoured	Allowed	Outliers	Percentiles	
1	A	91/115 (79%)	84±1 (93±1%)	7±1 (7±1%)	0±0 (0±0%)	53	83
2	B	3/24 (12%)	3±0 (100±0%)	0±0 (0±0%)	0±0 (0±0%)	100	100
All	All	1880/2780 (68%)	1745 (93%)	131 (7%)	4 (0%)	53	83

All 1 unique Ramachandran outliers are listed below.

Mol	Chain	Res	Type	Models (Total)
1	A	25	ALA	4

6.3.2 Protein sidechains [i](#)

In the following table, the Percentiles column shows the percent sidechain outliers of the chain as a percentile score with respect to all PDB entries followed by that with respect to all NMR

entries. The Analysed column shows the number of residues for which the sidechain conformation was analysed and the total number of residues.

Mol	Chain	Analysed	Rotameric	Outliers	Percentiles	
1	A	81/103 (79%)	73±1 (90±2%)	8±1 (10±2%)	12	57
2	B	3/19 (16%)	3±0 (90±15%)	0±0 (10±15%)	12	57
All	All	1680/2440 (69%)	1511 (90%)	169 (10%)	12	57

5 of 26 unique residues with a non-rotameric sidechain are listed below. They are sorted by the frequency of occurrence in the ensemble.

Mol	Chain	Res	Type	Models (Total)
1	A	16	ILE	20
1	A	97	MET	20
1	A	12	VAL	19
1	A	58	MET	19
1	A	85	GLN	15

6.3.3 RNA [i](#)

There are no RNA molecules in this entry.

6.4 Non-standard residues in protein, DNA, RNA chains [i](#)

There are no non-standard protein/DNA/RNA residues in this entry.

6.5 Carbohydrates [i](#)

There are no carbohydrates in this entry.

6.6 Ligand geometry [i](#)

There are no ligands in this entry.

6.7 Other polymers [i](#)

There are no such molecules in this entry.

6.8 Polymer linkage issues ⓘ

There are no chain breaks in this entry.

7 Chemical shift validation

The completeness of assignment taking into account all chemical shift lists is 91% for the well-defined parts and 91% for the entire structure.

7.1 Chemical shift list 1

File name: 2n0y_cs.str

Chemical shift list name: *assigned_chem_shift_list_1*

7.1.1 Bookkeeping

The following table shows the results of parsing the chemical shift list and reports the number of nuclei with statistically unusual chemical shifts.

Total number of shifts	1693
Number of shifts mapped to atoms	1693
Number of unparsed shifts	0
Number of shifts with mapping errors	0
Number of shifts with mapping warnings	0
Number of shift outliers (ShiftChecker)	3

7.1.2 Chemical shift referencing

The following table shows the suggested chemical shift referencing corrections.

Nucleus	# values	Correction \pm precision, ppm	Suggested action
$^{13}\text{C}_\alpha$	139	-0.11 ± 0.08	None needed (< 0.5 ppm)
$^{13}\text{C}_\beta$	129	-0.10 ± 0.09	None needed (< 0.5 ppm)
$^{13}\text{C}'$	133	0.13 ± 0.11	None needed (< 0.5 ppm)
^{15}N	132	-0.24 ± 0.29	None needed (< 0.5 ppm)

7.1.3 Completeness of resonance assignments

The following table shows the completeness of the chemical shift assignments for the well-defined regions of the structure. The overall completeness is 91%, i.e. 1072 atoms were assigned a chemical shift out of a possible 1172. 14 out of 14 assigned methyl groups (LEU and VAL) were assigned stereospecifically.

	Total	^1H	^{13}C	^{15}N
Backbone	462/466 (99%)	185/186 (99%)	186/188 (99%)	91/92 (99%)
Sidechain	542/626 (87%)	332/365 (91%)	202/232 (87%)	8/29 (28%)

Continued on next page...

Continued from previous page...

	Total	¹ H	¹³ C	¹⁵ N
Aromatic	68/80 (85%)	36/42 (86%)	31/31 (100%)	1/7 (14%)
Overall	1072/1172 (91%)	553/593 (93%)	419/451 (93%)	100/128 (78%)

7.1.4 Statistically unusual chemical shifts [i](#)

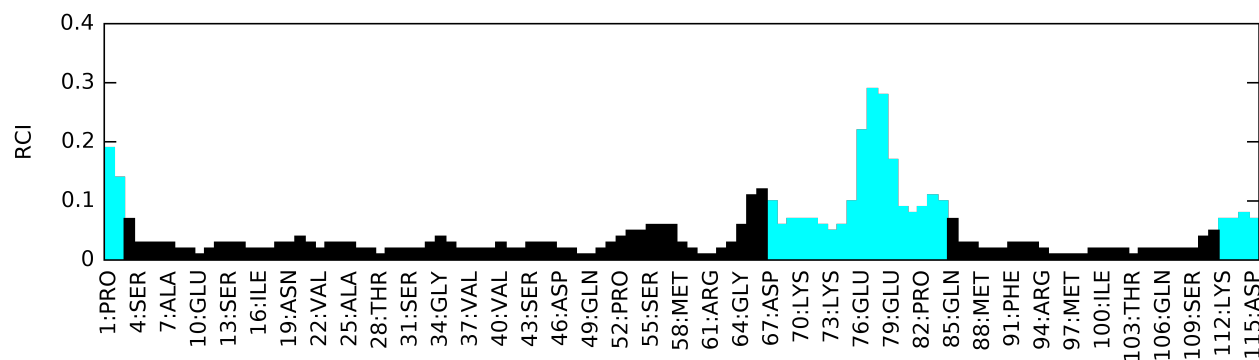
The following table lists the statistically unusual chemical shifts. These are statistical measures, and large deviations from the mean do not necessarily imply incorrect assignments. Molecules containing paramagnetic centres or hemes are expected to give rise to anomalous chemical shifts.

Mol	Chain	Res	Type	Atom	Shift, ppm	Expected range, ppm	Z-score
1	A	10	GLU	HG2	0.62	3.33 – 1.23	-7.9
1	A	10	GLU	HG3	1.05	3.31 – 1.21	-5.7
1	A	9	PHE	HB2	1.12	4.85 – 1.15	-5.1

7.1.5 Random Coil Index (RCI) plots [i](#)

The images below report *random coil index* values for the protein chains in the structure. The height of each bar gives a probability of a given residue to be disordered, as predicted from the available chemical shifts and the amino acid sequence. A value above 0.2 is an indication of significant predicted disorder. The colour of the bar shows whether the residue is in the well-defined core (black) or in the ill-defined residue ranges (cyan), as described in section 2 on ensemble composition.

Random coil index (RCI) for chain A:



Random coil index (RCI) for chain B:

