



# Full wwPDB X-ray Structure Validation Report ⓘ

May 4, 2020 – 11:32 AM EDT

PDB ID : 2NSP  
Title : Crystal structure of pectin methylesterase D178A mutant in complex with hexasaccharide I  
Authors : Fries, M.; Brocklehurst, K.; Shevchik, V.E.; Pickersgill, R.W.  
Deposited on : 2006-11-06  
Resolution : 1.70 Å(reported)

This is a Full wwPDB X-ray Structure Validation Report for a publicly released PDB entry.

We welcome your comments at [validation@mail.wwpdb.org](mailto:validation@mail.wwpdb.org)

A user guide is available at

<https://www.wwpdb.org/validation/2017/XrayValidationReportHelp>

with specific help available everywhere you see the ⓘ symbol.

---

The following versions of software and data (see [references ⓘ](#)) were used in the production of this report:

MolProbity	:	4.02b-467
Mogul	:	1.8.5 (274361), CSD as541be (2020)
Xtriage (Phenix)	:	1.13
EDS	:	2.10.1
Percentile statistics	:	20171227.v01 (using entries in the PDB archive December 27th 2017)
Refmac	:	5.8.0158
CCP4	:	7.0.044 (Gargrove)
Ideal geometry (proteins)	:	Engh & Huber (2001)
Ideal geometry (DNA, RNA)	:	Parkinson et al. (1996)
Validation Pipeline (wwPDB-VP)	:	2.10.1

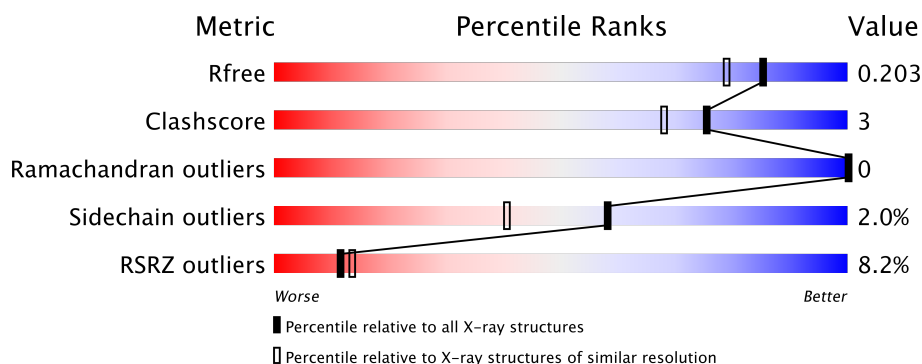
# 1 Overall quality at a glance

The following experimental techniques were used to determine the structure:

## *X-RAY DIFFRACTION*

The reported resolution of this entry is 1.70 Å.

Percentile scores (ranging between 0-100) for global validation metrics of the entry are shown in the following graphic. The table shows the number of entries on which the scores are based.



Metric	Whole archive (#Entries)	Similar resolution (#Entries, resolution range(Å))
$R_{free}$	111664	3793 (1.70-1.70)
Clashscore	122126	4167 (1.70-1.70)
Ramachandran outliers	120053	4100 (1.70-1.70)
Sidechain outliers	120020	4100 (1.70-1.70)
RSRZ outliers	108989	3718 (1.70-1.70)

The table below summarises the geometric issues observed across the polymeric chains and their fit to the electron density. The red, orange, yellow and green segments on the lower bar indicate the fraction of residues that contain outliers for  $\geq 3$ , 2, 1 and 0 types of geometric quality criteria respectively. A grey segment represents the fraction of residues that are not modelled. The numeric value for each fraction is indicated below the corresponding segment, with a dot representing fractions  $\leq 5\%$ . The upper red bar (where present) indicates the fraction of residues that have poor fit to the electron density. The numeric value is given above the bar.

Mol	Chain	Length	Quality of chain
1	A	342	<div> <div>9%</div> <div> <div></div> <div>92%</div> <div>7% •</div> </div> </div>
1	B	342	<div> <div>8%</div> <div> <div></div> <div>94%</div> <div>6% •</div> </div> </div>

The following table lists non-polymeric compounds, carbohydrate monomers and non-standard residues in protein, DNA, RNA chains that are outliers for geometric or electron-density-fit criteria:

Mol	Type	Chain	Res	Chirality	Geometry	Clashes	Electron density
2	M8C	A	405	X	-	-	X
2	M8C	A	406	-	-	-	X
2	M8C	B	405	-	-	-	X
2	M8C	B	406	-	-	-	X

## 2 Entry composition [i](#)

There are 4 unique types of molecules in this entry. The entry contains 6153 atoms, of which 0 are hydrogens and 0 are deuteriums.

In the tables below, the ZeroOcc column contains the number of atoms modelled with zero occupancy, the AltConf column contains the number of residues with at least one atom in alternate conformation and the Trace column contains the number of residues modelled with at most 2 atoms.

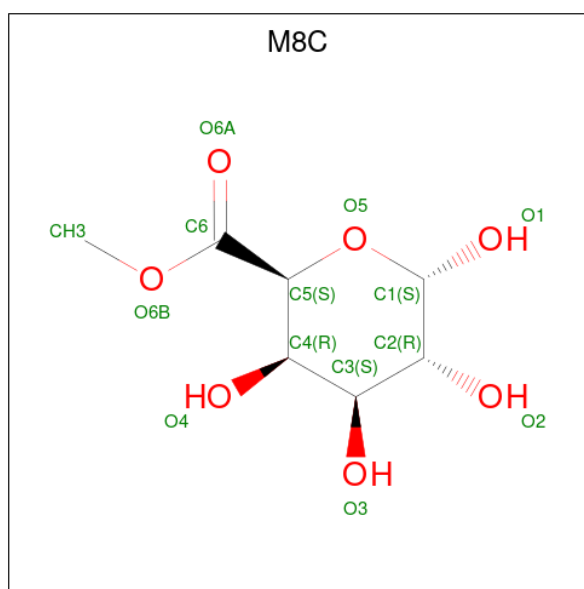
- Molecule 1 is a protein called Pectinesterase A.

Mol	Chain	Residues	Atoms					ZeroOcc	AltConf	Trace
1	A	342	Total	C	N	O	S	0	0	0
			2606	1628	452	522	4			
1	B	342	Total	C	N	O	S	0	0	0
			2606	1628	452	522	4			

There are 2 discrepancies between the modelled and reference sequences:

Chain	Residue	Modelled	Actual	Comment	Reference
A	178	ALA	ASP	ENGINEERED	UNP P0C1A9
B	178	ALA	ASP	ENGINEERED	UNP P0C1A9

- Molecule 2 is METHYL ALPHA-D-GALACTOPYRANURONATE (three-letter code: M8C) (formula: C<sub>7</sub>H<sub>12</sub>O<sub>7</sub>).



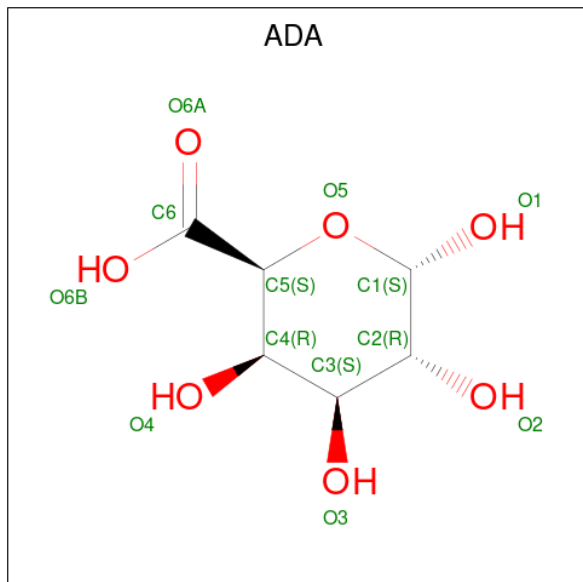
Mol	Chain	Residues	Atoms			ZeroOcc	AltConf
2	A	1	Total	C	O	0	0
			14	7	7		

*Continued on next page...*

Continued from previous page...

Mol	Chain	Residues	Atoms			ZeroOcc	AltConf
2	A	1	Total	C	O	0	0
			13	7	6		
2	A	1	Total	C	O	0	0
			13	7	6		
2	B	1	Total	C	O	0	0
			14	7	7		
2	B	1	Total	C	O	0	0
			13	7	6		
2	B	1	Total	C	O	0	0
			13	7	6		

- Molecule 3 is ALPHA-D-GALACTOPYRANURONIC ACID (three-letter code: ADA) (formula:  $C_6H_{10}O_7$ ).



Mol	Chain	Residues	Atoms			ZeroOcc	AltConf
3	A	1	Total	C	O	0	0
			12	6	6		
3	A	1	Total	C	O	0	0
			12	6	6		
3	A	1	Total	C	O	0	0
			12	6	6		
3	B	1	Total	C	O	0	0
			12	6	6		
3	B	1	Total	C	O	0	0
			12	6	6		
3	B	1	Total	C	O	0	0
			12	6	6		

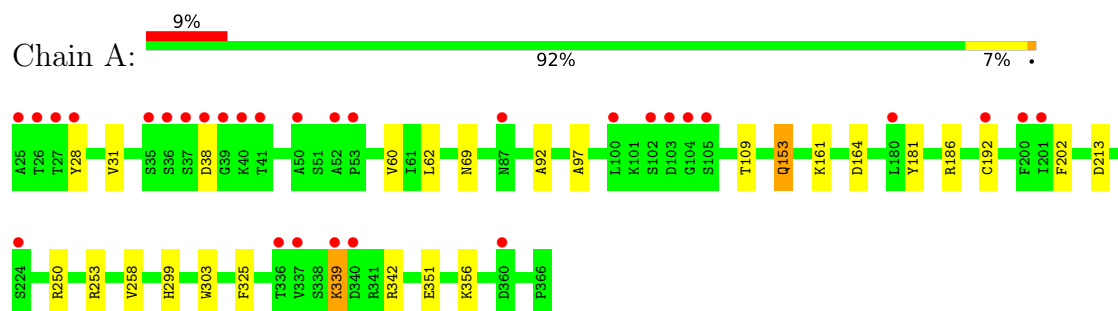
- Molecule 4 is water.

Mol	Chain	Residues	Atoms		ZeroOcc	AltConf
4	A	405	Total 405	O 405	0	0
4	B	384	Total 384	O 384	0	0

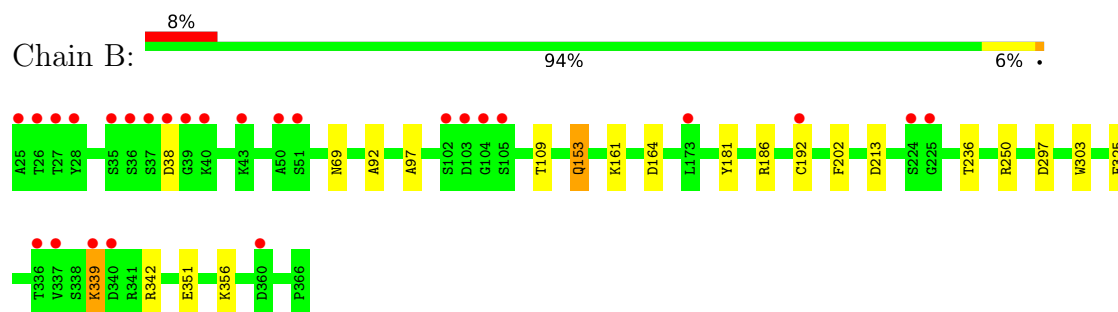
### 3 Residue-property plots [i](#)

These plots are drawn for all protein, RNA and DNA chains in the entry. The first graphic for a chain summarises the proportions of the various outlier classes displayed in the second graphic. The second graphic shows the sequence view annotated by issues in geometry and electron density. Residues are color-coded according to the number of geometric quality criteria for which they contain at least one outlier: green = 0, yellow = 1, orange = 2 and red = 3 or more. A red dot above a residue indicates a poor fit to the electron density ( $RSRZ > 2$ ). Stretches of 2 or more consecutive residues without any outlier are shown as a green connector. Residues present in the sample, but not in the model, are shown in grey.

#### • Molecule 1: Pectinesterase A



#### • Molecule 1: Pectinesterase A



## 4 Data and refinement statistics

Property	Value	Source
Space group	P 1 21 1	Depositor
Cell constants a, b, c, $\alpha$ , $\beta$ , $\gamma$	51.11Å 85.10Å 97.28Å 90.00° 93.48° 90.00°	Depositor
Resolution (Å)	97.13 – 1.70 31.34 – 1.70	Depositor EDS
% Data completeness (in resolution range)	99.7 (97.13-1.70) 99.7 (31.34-1.70)	Depositor EDS
$R_{merge}$	0.07	Depositor
$R_{sym}$	(Not available)	Depositor
$\langle I/\sigma(I) \rangle$ <sup>1</sup>	5.87 (at 1.70Å)	Xtriage
Refinement program	REFMAC 5.2.0005	Depositor
R, $R_{free}$	0.189 , 0.204 0.187 , 0.203	Depositor DCC
$R_{free}$ test set	4567 reflections (5.01%)	wwPDB-VP
Wilson B-factor (Å <sup>2</sup> )	11.3	Xtriage
Anisotropy	0.186	Xtriage
Bulk solvent $k_{sol}$ (e/Å <sup>3</sup> ), $B_{sol}$ (Å <sup>2</sup> )	0.40 , 62.2	EDS
L-test for twinning <sup>2</sup>	$\langle  L  \rangle = 0.46$ , $\langle L^2 \rangle = 0.29$	Xtriage
Estimated twinning fraction	No twinning to report.	Xtriage
$F_o, F_c$ correlation	0.94	EDS
Total number of atoms	6153	wwPDB-VP
Average B, all atoms (Å <sup>2</sup> )	14.0	wwPDB-VP

Xtriage's analysis on translational NCS is as follows: *The largest off-origin peak in the Patterson function is 6.04% of the height of the origin peak. No significant pseudotranslation is detected.*

<sup>1</sup>Intensities estimated from amplitudes.

<sup>2</sup>Theoretical values of  $\langle |L| \rangle$ ,  $\langle L^2 \rangle$  for acentric reflections are 0.5, 0.333 respectively for untwinned datasets, and 0.375, 0.2 for perfectly twinned datasets.



## 5 Model quality

### 5.1 Standard geometry

Bond lengths and bond angles in the following residue types are not validated in this section: M8C, ADA

The Z score for a bond length (or angle) is the number of standard deviations the observed value is removed from the expected value. A bond length (or angle) with  $|Z| > 5$  is considered an outlier worth inspection. RMSZ is the root-mean-square of all Z scores of the bond lengths (or angles).

Mol	Chain	Bond lengths		Bond angles	
		RMSZ	$\# Z  > 5$	RMSZ	$\# Z  > 5$
1	A	0.37	0/2660	0.54	0/3607
1	B	0.37	0/2660	0.54	0/3607
All	All	0.37	0/5320	0.54	0/7214

There are no bond length outliers.

There are no bond angle outliers.

There are no chirality outliers.

There are no planarity outliers.

### 5.2 Too-close contacts

In the following table, the Non-H and H(model) columns list the number of non-hydrogen atoms and hydrogen atoms in the chain respectively. The H(added) column lists the number of hydrogen atoms added and optimized by MolProbity. The Clashes column lists the number of clashes within the asymmetric unit, whereas Symm-Clashes lists symmetry related clashes.

Mol	Chain	Non-H	H(model)	H(added)	Clashes	Symm-Clashes
1	A	2606	0	2525	23	0
1	B	2606	0	2525	13	0
2	A	40	0	30	1	0
2	B	40	0	30	1	0
3	A	36	0	18	0	0
3	B	36	0	18	0	0
4	A	405	0	0	13	0
4	B	384	0	0	3	0
All	All	6153	0	5146	36	0

The all-atom clashscore is defined as the number of clashes found per 1000 atoms (including hydrogen atoms). The all-atom clashscore for this structure is 3.

All (36) close contacts within the same asymmetric unit are listed below, sorted by their clash magnitude.

Atom-1	Atom-2	Interatomic distance (Å)	Clash overlap (Å)
1:A:299:HIS:HB3	4:A:506:HOH:O	1.56	1.03
1:A:28:TYR:HD1	4:A:642:HOH:O	1.51	0.92
1:A:339:LYS:HE2	1:A:339:LYS:H	1.37	0.90
1:B:339:LYS:HE2	1:B:339:LYS:H	1.38	0.86
1:A:109:THR:OG1	1:A:153:GLN:HG3	1.79	0.81
1:A:28:TYR:CD1	4:A:642:HOH:O	2.28	0.81
1:B:109:THR:OG1	1:B:153:GLN:HG3	1.84	0.78
1:B:192:CYS:HB3	4:B:539:HOH:O	1.89	0.72
1:A:60:VAL:HG12	4:A:642:HOH:O	1.89	0.72
1:A:164:ASP:OD1	1:A:186:ARG:HD3	1.91	0.70
1:A:31:VAL:HG22	4:A:501:HOH:O	1.94	0.67
1:B:164:ASP:OD1	1:B:186:ARG:HD3	1.94	0.67
1:A:62:LEU:HB3	4:A:501:HOH:O	1.94	0.66
1:A:97:ALA:HB2	1:A:153:GLN:HG2	1.77	0.66
1:B:97:ALA:HB2	1:B:153:GLN:HG2	1.81	0.61
1:A:192:CYS:HB3	4:A:694:HOH:O	2.04	0.57
1:A:28:TYR:HB3	4:A:501:HOH:O	2.06	0.55
1:A:342:ARG:HD3	4:A:663:HOH:O	2.05	0.54
1:B:342:ARG:HD3	4:B:684:HOH:O	2.06	0.54
1:A:97:ALA:CB	1:A:153:GLN:HG2	2.41	0.48
1:A:258:VAL:HG12	4:A:506:HOH:O	2.13	0.47
1:B:97:ALA:CB	1:B:153:GLN:HG2	2.44	0.46
1:B:297:ASP:HB2	4:B:812:HOH:O	2.15	0.46
1:B:213:ASP:OD1	1:B:250:ARG:NE	2.46	0.45
1:B:202:PHE:CD2	2:B:401:M8C:HH31	2.53	0.44
1:A:202:PHE:CD2	2:A:401:M8C:HH31	2.53	0.44
1:A:303:TRP:CE2	1:A:325:PHE:HB3	2.53	0.44
1:A:192:CYS:CB	4:A:694:HOH:O	2.64	0.43
1:B:69:ASN:HA	1:B:92:ALA:O	2.19	0.42
1:A:213:ASP:OD1	1:A:250:ARG:NE	2.46	0.42
1:A:253:ARG:NE	4:A:506:HOH:O	2.52	0.42
1:A:253:ARG:NH1	4:A:506:HOH:O	2.52	0.42
1:B:303:TRP:CE2	1:B:325:PHE:HB3	2.55	0.42
1:B:351:GLU:HA	1:B:356:LYS:HD2	2.01	0.41
1:A:351:GLU:HA	1:A:356:LYS:HD2	2.02	0.41
1:A:69:ASN:HA	1:A:92:ALA:O	2.20	0.41

There are no symmetry-related clashes.

## 5.3 Torsion angles

### 5.3.1 Protein backbone

In the following table, the Percentiles column shows the percent Ramachandran outliers of the chain as a percentile score with respect to all X-ray entries followed by that with respect to entries of similar resolution.

The Analysed column shows the number of residues for which the backbone conformation was analysed, and the total number of residues.

Mol	Chain	Analysed	Favoured	Allowed	Outliers	Percentiles	
1	A	340/342 (99%)	336 (99%)	4 (1%)	0	100	100
1	B	340/342 (99%)	336 (99%)	4 (1%)	0	100	100
All	All	680/684 (99%)	672 (99%)	8 (1%)	0	100	100

There are no Ramachandran outliers to report.

### 5.3.2 Protein sidechains

In the following table, the Percentiles column shows the percent sidechain outliers of the chain as a percentile score with respect to all X-ray entries followed by that with respect to entries of similar resolution.

The Analysed column shows the number of residues for which the sidechain conformation was analysed, and the total number of residues.

Mol	Chain	Analysed	Rotameric	Outliers	Percentiles	
1	A	280/280 (100%)	275 (98%)	5 (2%)	62	45
1	B	280/280 (100%)	274 (98%)	6 (2%)	56	38
All	All	560/560 (100%)	549 (98%)	11 (2%)	58	40

All (11) residues with a non-rotameric sidechain are listed below:

Mol	Chain	Res	Type
1	A	38	ASP
1	A	153	GLN
1	A	161	LYS
1	A	181	TYR
1	A	339	LYS
1	B	38	ASP
1	B	153	GLN
1	B	161	LYS

*Continued on next page...*

*Continued from previous page...*

Mol	Chain	Res	Type
1	B	181	TYR
1	B	236	THR
1	B	339	LYS

Some sidechains can be flipped to improve hydrogen bonding and reduce clashes. All (5) such sidechains are listed below:

Mol	Chain	Res	Type
1	A	69	ASN
1	A	87	ASN
1	A	210	ASN
1	A	248	ASN
1	B	87	ASN

### 5.3.3 RNA [i](#)

There are no RNA molecules in this entry.

## 5.4 Non-standard residues in protein, DNA, RNA chains [i](#)

There are no non-standard protein/DNA/RNA residues in this entry.

## 5.5 Carbohydrates [i](#)

There are no carbohydrates in this entry.

## 5.6 Ligand geometry [i](#)

12 ligands are modelled in this entry.

In the following table, the Counts columns list the number of bonds (or angles) for which Mogul statistics could be retrieved, the number of bonds (or angles) that are observed in the model and the number of bonds (or angles) that are defined in the Chemical Component Dictionary. The Link column lists molecule types, if any, to which the group is linked. The Z score for a bond length (or angle) is the number of standard deviations the observed value is removed from the expected value. A bond length (or angle) with  $|Z| > 2$  is considered an outlier worth inspection. RMSZ is the root-mean-square of all Z scores of the bond lengths (or angles).

Mol	Type	Chain	Res	Link	Bond lengths			Bond angles		
					Counts	RMSZ	$\# Z  > 2$	Counts	RMSZ	$\# Z  > 2$
2	M8C	B	401	3	14,14,14	1.45	1 (7%)	20,20,20	1.22	2 (10%)

Mol	Type	Chain	Res	Link	Bond lengths			Bond angles		
					Counts	RMSZ	# Z  > 2	Counts	RMSZ	# Z  > 2
3	ADA	B	404	3,2	9,12,13	0.33	0	12,17,19	0.54	0
2	M8C	B	405	3,2	13,13,14	1.57	1 (7%)	16,18,20	1.58	3 (18%)
3	ADA	B	403	3	9,12,13	0.39	0	12,17,19	0.51	0
2	M8C	B	406	2	13,13,14	1.56	1 (7%)	16,18,20	1.58	3 (18%)
2	M8C	A	406	2	13,13,14	1.55	1 (7%)	16,18,20	1.59	3 (18%)
3	ADA	B	402	3,2	9,12,13	0.46	0	12,17,19	0.64	0
2	M8C	A	401	3	14,14,14	1.46	1 (7%)	20,20,20	1.21	2 (10%)
3	ADA	A	404	3,2	9,12,13	0.46	0	12,17,19	0.76	1 (8%)
2	M8C	A	405	3,2	13,13,14	1.56	1 (7%)	16,18,20	1.56	3 (18%)
3	ADA	A	403	3	9,12,13	0.37	0	12,17,19	0.64	0
3	ADA	A	402	3,2	9,12,13	0.45	0	12,17,19	0.77	0

In the following table, the Chirals column lists the number of chiral outliers, the number of chiral centers analysed, the number of these observed in the model and the number defined in the Chemical Component Dictionary. Similar counts are reported in the Torsion and Rings columns. '-' means no outliers of that kind were identified.

Mol	Type	Chain	Res	Link	Chirals	Torsions	Rings
2	M8C	B	401	3	-	0/6/26/26	0/1/1/1
3	ADA	B	404	3,2	-	0/0/21/24	0/1/1/1
2	M8C	B	405	3,2	-	2/6/23/26	0/1/1/1
3	ADA	B	403	3	-	0/0/21/24	0/1/1/1
2	M8C	B	406	2	-	2/6/23/26	0/1/1/1
2	M8C	A	406	2	-	2/6/23/26	0/1/1/1
3	ADA	B	402	3,2	-	0/0/21/24	0/1/1/1
2	M8C	A	401	3	-	0/6/26/26	0/1/1/1
3	ADA	A	404	3,2	-	0/0/21/24	0/1/1/1
2	M8C	A	405	3,2	1/1/5/6	2/6/23/26	0/1/1/1
3	ADA	A	403	3	-	0/0/21/24	0/1/1/1
3	ADA	A	402	3,2	-	0/0/21/24	0/1/1/1

All (6) bond length outliers are listed below:

Mol	Chain	Res	Type	Atoms	Z	Observed(Å)	Ideal(Å)
2	A	405	M8C	O6B-C6	5.30	1.46	1.33
2	A	406	M8C	O6B-C6	5.30	1.46	1.33
2	B	405	M8C	O6B-C6	5.29	1.46	1.33
2	B	406	M8C	O6B-C6	5.28	1.46	1.33
2	A	401	M8C	O6B-C6	4.92	1.45	1.33
2	B	401	M8C	O6B-C6	4.92	1.45	1.33

All (17) bond angle outliers are listed below:

Mol	Chain	Res	Type	Atoms	Z	Observed(°)	Ideal(°)
2	A	406	M8C	O6B-C6-C5	4.78	120.00	110.58
2	B	406	M8C	O6B-C6-C5	4.77	119.98	110.58
2	A	405	M8C	O6B-C6-C5	4.71	119.87	110.58
2	B	405	M8C	O6B-C6-C5	4.71	119.85	110.58
2	B	401	M8C	O6B-C6-C5	4.38	119.21	110.58
2	A	401	M8C	O6B-C6-C5	4.30	119.05	110.58
3	A	404	ADA	C1-C2-C3	2.45	112.67	109.67
2	B	406	M8C	O6B-C6-O6A	-2.44	119.07	123.84
2	B	405	M8C	O6B-C6-O6A	-2.41	119.13	123.84
2	A	405	M8C	O6B-C6-O6A	-2.40	119.15	123.84
2	A	406	M8C	O6B-C6-O6A	-2.30	119.34	123.84
2	A	401	M8C	O6B-C6-O6A	-2.22	119.49	123.84
2	B	401	M8C	O6B-C6-O6A	-2.13	119.67	123.84
2	B	406	M8C	CH3-O6B-C6	2.09	120.66	115.94
2	B	405	M8C	CH3-O6B-C6	2.04	120.56	115.94
2	A	406	M8C	CH3-O6B-C6	2.04	120.55	115.94
2	A	405	M8C	CH3-O6B-C6	2.01	120.47	115.94

All (1) chirality outliers are listed below:

Mol	Chain	Res	Type	Atom
2	A	405	M8C	C1

All (8) torsion outliers are listed below:

Mol	Chain	Res	Type	Atoms
2	B	406	M8C	C5-C6-O6B-CH3
2	A	406	M8C	C5-C6-O6B-CH3
2	A	405	M8C	C5-C6-O6B-CH3
2	B	405	M8C	O6A-C6-O6B-CH3
2	B	406	M8C	O6A-C6-O6B-CH3
2	A	405	M8C	O6A-C6-O6B-CH3
2	A	406	M8C	O6A-C6-O6B-CH3
2	B	405	M8C	C5-C6-O6B-CH3

There are no ring outliers.

2 monomers are involved in 2 short contacts:

Mol	Chain	Res	Type	Clashes	Symm-Clashes
2	B	401	M8C	1	0
2	A	401	M8C	1	0

## 5.7 Other polymers [i](#)

There are no such residues in this entry.

## 5.8 Polymer linkage issues [i](#)

There are no chain breaks in this entry.

## 6 Fit of model and data

### 6.1 Protein, DNA and RNA chains

In the following table, the column labelled ‘#RSRZ > 2’ contains the number (and percentage) of RSRZ outliers, followed by percent RSRZ outliers for the chain as percentile scores relative to all X-ray entries and entries of similar resolution. The OWAB column contains the minimum, median, 95<sup>th</sup> percentile and maximum values of the occupancy-weighted average B-factor per residue. The column labelled ‘Q < 0.9’ lists the number of (and percentage) of residues with an average occupancy less than 0.9.

Mol	Chain	Analysed	<RSRZ>	#RSRZ > 2		OWAB(Å <sup>2</sup> )	Q < 0.9
1	A	342/342 (100%)	0.61	30 (8%)	10 11	4, 10, 23, 38	1 (0%)
1	B	342/342 (100%)	0.47	26 (7%)	14 16	4, 10, 23, 38	1 (0%)
All	All	684/684 (100%)	0.54	56 (8%)	11 13	4, 10, 23, 38	2 (0%)

All (56) RSRZ outliers are listed below:

Mol	Chain	Res	Type	RSRZ
1	A	37	SER	15.1
1	B	26	THR	13.4
1	B	37	SER	12.2
1	A	26	THR	11.5
1	A	25	ALA	11.3
1	B	38	ASP	9.3
1	A	38	ASP	9.1
1	B	25	ALA	8.9
1	A	36	SER	8.8
1	A	39	GLY	8.8
1	A	192	CYS	7.9
1	B	36	SER	7.8
1	B	39	GLY	7.0
1	B	192	CYS	7.0
1	A	40	LYS	6.6
1	B	40	LYS	6.5
1	B	27	THR	6.2
1	B	35	SER	5.9
1	A	35	SER	5.8
1	A	27	THR	4.9
1	B	102	SER	4.1
1	A	102	SER	4.0
1	B	339	LYS	3.9
1	A	337	VAL	3.8

*Continued on next page...*



*Continued from previous page...*

Mol	Chain	Res	Type	RSRZ
1	B	224	SER	3.7
1	A	339	LYS	3.7
1	A	28	TYR	3.1
1	A	103	ASP	3.0
1	A	224	SER	3.0
1	B	103	ASP	3.0
1	A	41	THR	2.9
1	B	225	GLY	2.9
1	A	104	GLY	2.9
1	B	360	ASP	2.8
1	B	43	LYS	2.7
1	A	105	SER	2.6
1	B	105	SER	2.6
1	B	340	ASP	2.6
1	A	50	ALA	2.6
1	A	336	THR	2.5
1	B	336	THR	2.5
1	A	52	ALA	2.5
1	B	50	ALA	2.4
1	A	360	ASP	2.4
1	A	87	ASN	2.3
1	B	104	GLY	2.3
1	A	180	LEU	2.3
1	B	28	TYR	2.3
1	A	53	PRO	2.2
1	A	100	LEU	2.2
1	A	201	ILE	2.1
1	B	51	SER	2.1
1	A	340	ASP	2.1
1	B	173	LEU	2.0
1	B	337	VAL	2.0
1	A	200	PHE	2.0

## 6.2 Non-standard residues in protein, DNA, RNA chains [i](#)

There are no non-standard protein/DNA/RNA residues in this entry.

## 6.3 Carbohydrates [i](#)

There are no carbohydrates in this entry.

## 6.4 Ligands ⓘ

In the following table, the Atoms column lists the number of modelled atoms in the group and the number defined in the chemical component dictionary. The B-factors column lists the minimum, median, 95<sup>th</sup> percentile and maximum values of B factors of atoms in the group. The column labelled 'Q<0.9' lists the number of atoms with occupancy less than 0.9.

Mol	Type	Chain	Res	Atoms	RSCC	RSR	B-factors(Å <sup>2</sup> )	Q<0.9
2	M8C	B	406	13/14	0.35	0.62	57,58,59,59	0
3	ADA	A	404	12/13	0.39	0.36	37,42,43,46	0
2	M8C	B	405	13/14	0.50	0.43	48,51,52,54	0
2	M8C	A	406	13/14	0.51	0.59	60,61,62,62	0
2	M8C	A	405	13/14	0.59	0.49	53,55,56,57	0
3	ADA	B	404	12/13	0.62	0.24	33,36,37,41	0
3	ADA	B	403	12/13	0.92	0.12	15,17,20,23	0
3	ADA	A	403	12/13	0.92	0.11	14,17,21,24	0
2	M8C	A	401	14/14	0.94	0.10	9,11,13,14	0
2	M8C	B	401	14/14	0.95	0.09	9,12,14,15	0
3	ADA	B	402	12/13	0.97	0.08	8,9,10,11	0
3	ADA	A	402	12/13	0.98	0.06	7,8,9,9	0

## 6.5 Other polymers ⓘ

There are no such residues in this entry.